

WESTERN WANDERER

COLAC BAY OREPUKI TUATAPERE CLIFDEN ORAWIA BLACKMOUNT MONOWAI

Tuatapere Amenities Trust Fund Sponsored

Printed by Waiau Area School (03) 226-6285

Editor: Ph 027 462 9527 e-Mail: lorettawanderer@gmail.com

ISSUE NUMBER: 175
DECEMBER 2014

Closing Date for next copy:
Friday, 13th February 2015

Christmas Santa Parade!!!!

Come on guys... lets knock this one out of the park!

Date: Wednesday 24th of December

Starts: From 6:30pm Onwards

There will be a sausage sizzle, free merry go round, Clowns, Bouncy castle in the RSA Hall, Chocolate wheel, Decorate your Bike competition, Pipe band, Floats, Classic Cars, Trucks and more, a parade and of course Last but not least SANTA!!!!

Timing:

6:30pm: The night starts, bring the kids down and have a catch up with friends and family, have a sausage, enjoy the parade!!!

7pm: Decorate your bike competition starts. (on the grass beside Library)

7:20pm: Parade starts outside the Library and heads towards the RSA Hall

7:30pm SANTA!!!

Anyone wanting to help out or know more please call Avril Johnston 03 226 6483 or John Munro 03 226 6341



SANTA PARADE IS ON CHRISTMAS EVE!!

Looking forward to seeing all the great floats again this year!!

I would like to thank everyone for the support while I take over editing the Wanderer from Gail, she has done an amazing job over the past 8 years, I just hope I can do a great job just like she has,

I would like to wish everyone a safe and Merry Christmas and a Happy new Year and look forward to hearing from everyone in February 2015.

Loretta Tilby.

Inside this issue:

Councillor Community Board Notice	2
Community Notice Board Midwife-Isobel / Comm Worker-wildthings	3/4
sewing & mending/WD Joinery Ross Burgess/Accounting	5
Waiau Town & Country Club Citizens Advice/Shirley Whyte	6
Humpridge track/H&L Gill Fencing/Ann Sutherland /library Tuatapere Pool Update	7
Fowle/Tuatapere Handyman Otautau Vets Ltd	8/9
Electrician/Promotions/Forde Shearing/Sutherland Contracting- Waihapa Photography/Tui Amenities Trust/ Plunket	10/11
Crack	12
Dagwood Dagging/ Canterbury Cars/ Clifton Trading and Repairs Colac Bay Tavern	13/14
Santa parade/Police Report Waiau Hotel/Golf News Plunket	15/16 17/18
Ryal Bush/ISBT Therapy/Fencer Budget Advice/ Waiau health Tuatapere Maternity/ Lastlight café Paul Anderson/Eric Mitchell Elder Trust/Yoga	19/20 21/22
physio/Millars/Alex Reid/Auto Elect/McMaster Builder/Barrett Shearing/Gill Contracting/Barrett Ag/Western Fencing/Clifden Play Waterforce/W.S.scanning/ Land- scape Garden/Western Elec- tric/ Tuatapere service station	23/24 25 26/27
Menpes Contracting/Pet Show Results/Agrissentials	28/29
Alex Reid / Highway 99/ D Unahi/Lions club	30
Sports day update/Hauroko Valley Primary School Fundraiser/Tui Summer day update/Comm Law	31/32

COUNCILLOR'S CORNER:

Hi and welcome to the Christmas edition for 2014.

Hopefully the foul weather of recent times has taken a turn for the better and we can enjoy some welcome sunshine.

Santa parade on the 24/12/14 is the next main event on our busy Christmas calendar. Bring your family and friends and enjoy a great evening's entertainment. A small group of volunteers have gone the extra yard to provide this function for all to enjoy so please support your local community's efforts.

The Tuatapere Athletic Societies sports on New Year's Day and Waiau A & P Show are of equal importance and deserve the support of the wider community. These events attract a large number of visitors and it is a great opportunity to catch up on old friends and fellow competitors from the past. Once again the organisers are all volunteers and would welcome some new blood.

I feel the volunteers I have just mentioned need a special vote of thanks - not only the ones in the above organisations but to all concerned. The Tuatapere Ambulance and the local Fire Brigade staff and right down to the ref or umpire at a local sports fixture. Thankfully most of our region's people are happy to help out. A special thanks to you all from the Southland District Council and the Tuatapere Community Board.

A comment from the staff at our recycling who is understandably a little concerned as to the dumping of offal, lambs tails etc beside the container.

A photo from the CCT camera in the local paper would, I feel be rather embarrassing to the culprit.

Well folks the festive season is upon us so enjoy your local festivities - have a great Christmas and a neat New Year.

Christmas greetings to you all, stay safe and take care.

Your Councillor

George.

**Want your car washed and dried
windows cleaned
Price arranged on request
Contact Rex Hibbs Flat 1/26
Orawia Road Tuatapere.**

News from your Community Board December 2014

By now, you would have noticed the instalment of the new playground equipment at the Half Mile playground. This playground station is specifically designed for those in early childhood. It had been recognised that there was a need for equipment suited to the very young members of our community. The Tuatapere Community Board would like to thank Helen Hammond for alerting the Board to this need and her conscientious research into appropriate play equipment. The Board are also grateful to Meridian Energy who contributed a part of the financial requirements for the purchase and installation of the equipment. We hope many happy children will enjoy the playground over the summer holiday period.

It has come to the Board's attention that some owners of dogs are forgetful in abiding to the 'Dog Bylaw 2010', in regard to 'Fouling in Public Places'. The by-law states that "where the person having control of the dog removes the faeces and properly disposes immediately". Over the summer months when pedestrian traffic in our streets and tourist visits are more regular it's certainly desirable to have clear, unlittered walking paths. It's great to see more dogs out and about on leads but it's important for owners to take some ownership in keeping their/our town clean and tidy. Thanks!

The community Board would like to congratulate Kathy Hammond on her 'Local Hero' award. Many of us have had the privilege of having Kathy look after our Plunket and nursing needs. There is no doubt Kathy is and has been for some years an outstanding nurse and we are very proud that she is a member of our community. Well done Kathy on a very deserved award!

It was a great pleasure to attend the Waiau Area School end of year prize giving. Congratulations to all the worthy recipients of awards and to all the staff and students for obviously, a great year. Special good wished to the new Board of Trustees as you launch in to a year, exciting year! Congratulations and best wished to all those at Hauroko Valley Primary, as well. It was interesting to read in your recent newsletter of all the great things that have been happening!

We'd like to wish you, our community, a lovely Christmas and good health and happiness in 2015!

Anne Horrell

Community Notice Board:

TUATAPERE BUSHMAN'S MUSEUM
advises that if the Bushman's Museum (Orawia Road) is not open when you have visitors who wish to view, you are able to contact Lindsay Faulkner - (03) 226 6650 and arrange a suitable time.

ST JOHN WESTERN SOUTHLAND HEALTH SHUTTLE SERVICE

This service is available to everyone in the Western Southland Area by DONATION for any health related appointment.

Appointments include: Dentist, Podiatrist, Optometrist, Hospital Appointments, Eye, or Hearing Clinics to name a few.

To book the shuttle from anywhere in Western Southland, please phone Margaret Gutsell on 03 225 8217.

As a result of people using this as a free taxi service, we now wish to advise all new and existing clients, that a DONATION is required, if we are to continue this service.

To our genuine clients. Please remember this service is for health related appointments only.

As we get busier, please remember to let us know about booking at least 24 hours ahead.



Tuatapere Ambulance

The Tuatapere Ambulance is a free service for Tuatapere residents.

If you receive an account from St John for this service please forward it to:

The Treasurer,
Tuatapere & District Lions
PO Box 47
TUATAPERE



PUBLIC NOTICES

CRAFT CENTRE "SUMMER" HOURS 10.00am - 4.00pm - closed Tuesdays

Come in and browse and see what we have to offer. Hats, scarves, children's knitwear, cards, jewellery, wood-ware, sewing, jams, pickles, sauces etc Tuatapere souvenirs "On Natures Edge" logo are always available. Is anyone interested in joining to sell their Crafts? You are more than welcome to contact us.

If anyone wants to volunteer their time and work in the Centre, it is a great way to meet people - let us know.

Country Corner Crafts if you wish to view the shop and it is closed please ring Margaret 226 6650 or Lyla 226 6187 and they will open it for you.

Tuatapere RSA Memorial Bursary Applications

It is time again to apply to the above for the 2015 Bursary. Forms can be collected from the Tuatapere Health and Gift shop and must be filled out and returned to John Munro 16 King St Tuatapere no later than March the 30th 2015.

Enquiry's to John Munro 027 412 2925

Looking for Caravan to buy Up to \$5000

Please ring Uli or Mirjam 032266097

St Georges Anglican Church services December Sun

21st 10am Carol service & morning tea,

Wed 24th Christmas Eve 9pm service then supper.

We wish you all a Merry Christmas & Happy Holidays!

Contacts: Virginia 2266 772 or Les 2266 456.

FOR SALE

Central Southland College Blazer \$180

Size 10 , would fit a year 11-13 student.

Phone Vicki 03 2266 172 or txt 027 227 0082

To give away 6 Peacocks and 2 Peahens,
Need to be rehomed to a lifestyle block/ farm,
Contact Shaun on 2266 022



Superdirt

Bags @ \$5.00 ready for your garden.

Tuatapere Lions Club Project

Phone Trevor 225-5864 or Stephen 226-6817.



INDEPENDENT MIDWIFE

ISOBEL DEVERY

*Caring for women throughout
Pregnancy, Birth till six weeks
Post Natal.*

*Choices for place of birth, Home,
Tuatapere or Winton
Birthing Units or
Kew Hospital.*

*Free pregnancy tests
available on request.*

**Phone: (03) 2266822
027 2267020**

©Frederic, com.comgraph.com

TUATAPERE COMMUNITY WORKER.

Avril Johnston Mail - c/- Post Shop,
TUATAPERE

The office will close at 4.30pm on Wednesday the 24th of December 2014 and will reopen on Monday the 26th January 2015 at 10am.

If any assistance is required during this time contact Marilyn Smith - Community Worker at Ohai/Nightcaps (03) 225 4522

I would like to wish the Community a very
MERRY CHRISTMAS and
HAPPY NEW YEAR.

SCHOOL HOLIDAY PROGRAMME:

Venue: Scout Den on Half Mile Road

This programme will be run on a Monday, Thursday and Friday from 10am – 3pm for 2 weeks in January 2015. Dates to be confirmed later.

This is for school age children and a gold coin donation is all it costs to participate.

If you are interested you must register with Jill 027 237 8225 or Avril 027 326 6205

Volunteers needed to help run it.

Work and Income:

WINZ will not be coming out to the rural areas until further notice, people are to ring 0800 559 009 for assistance or contact me.

COME JOIN US AT WILD THINGS



Home Based early childhood
care and Education
NOW available in the Western
Southland Region

*If you are interested in working
as a Home Based educator or if
you are Looking for education
and care for your*

-Visiting Teacher support

*- 20ECE hours and WINZ
Childcare support*

*- Excellent adult to child ratios
(1-4 children)*

*Call Donna today on
0800 44 44 70*



www.wildthings.org.nz
where children can be children

Tuatapere Toy Library

Orawia Rd

Open Tuesday mornings
from 9.30-11am



Memberships Annually:

\$70 non roster

\$40 roster

Or casual \$20 for 3 visits

Also available:

Large Toy Party Hire

Commercial Bouncy Castle Hire

**No charges per toy! Over 600 toys
to choose from!**

Extra charges apply only to electronic toys
such as the Nintendo Wii, PSP and DVD's.

For more information ph Karen on 2266 850
or email tj.7.black@hotmail.com




C: 0274 247 102
T: 03 225 8652
E: drakeplumbing@vodafone.co.nz

KIERAN DRAKE
Certifying Plumber
& Drainlayer

Sewing and Mending services available

Experienced machinist offering fast, reliable service with very reasonable rates. I will mend/make anything from zip replacements to curtain making - just ask! Free quotes and pick-up delivery service within Tuatapere.




Contact: Deborah 03 226 6783 or 021 0305 667

W.D Joinery Ltd
5 McFeely St
Tuatapere
Ph Wade DeClifford
027 506 4545

**National Winner of the
Master Joiner Apprentice
Awards 2011**

**Free Design &
Quote**


**Specialise in
Kitchens**



**Spray painting available
Houses - Sheds etc**

For all your Accounting and Tax Solutions

Ask for Janice or Trevor England

 **03 2266110**

Aparima Accounting Ltd
57 Main Road Tuatapere



**ROSS BURGESS
BUILDING**

building - renovations -
maintenance - fences etc
- FREE QUOTES -

Phone 027 4246021



**The Blonde And A Broken Tail
Light**

"How long have you been driving without a tail light, mam?" the policeman asked Cathy, a blonde.

Cathy jumped out, ran to the rear of her car, and gave a low moan.

Her distress was so great that the cop was moved and decided to ease up on her a bit.

"Aw, come now," he said, "you don't have to take it so hard. It isn't that serious."

"It isn't?" cried Cathy.

"I wonder what happened to my husband's boat and trailer?"

Tea-Tree Oil Products: non-toxic, healthier choices, eco-sense and "affordable". (Botanical name *Me-laleuca*) Please phone Imelda 226-6665 or email: pelmels@es.co.nz

Shirley Whyte
- your local real estate specialist.

Western Southland born and bred,
talk to Shirley if you're thinking
of buying or selling real estate.

Call 027 504 5220
shirley@hoamz.co.nz
www.hoamz.co.nz

 **hoamz**
where your heart is

hoamz Southland Ltd, Licensed
Real Estate Agent (REAA 2008)

Western Wanderer Loretta Tilby

Loretta's contact details are:
5 Clifden Road, Tuatapere.
Phone 0274 629 527
e-Mail: lorettawanderer@gmail.com



**Citizens Advice Bureau
Invercargill**

Not sure?
Ask Us.

0800 367 222

www.cab.org.nz

cab.invercargill@xtra.co.nz

97 Spey Street
PO Box 1222
Invercargill 9840

41 King Street, Tuatapere. Phone 226-6489

WAIAU TOWN AND COUNTRY CLUB

NEW YEARS EVE & NEW YEARS DAY

31/12/2014 – 01/01/2015

Fraser is in the House!

Come join our own Fraser for two great Nights,
Also, there will be other great days and nights at the
Club over the next 6 weeks to come

Bistro Open every Friday, Saturday and Sunday and
light meals available every other day/night

CLUB SPECIALS

Coruba Rum 10 pk	\$25.00
Woodstock pk	\$25.00
Cruisers 12 pk	\$25.00
Thornbury Pinot Gris	\$16.00

~ BISTRO ~

Popular new menu

Don't forget we do takeaways.

☆ We will supply children's birthday cake to
families dining in for birthdays

Members Only Corner

"Bottle Store Specials"

Members monthly special

Subs now for 2014 - 2015 year.
We need and appreciate your
support.

For direct payment bank act no.
03 1748 0008672 00. Ref please
put sub and name.

Club is now opening at
12pm Monday to Friday
Saturday 11am and
Sunday 3.30pm.

We hope this does not
inconvenience our members.

**Meat Packs are a
Friday night feature.**



Simply Soothing
Soft tissue pain and tension release
ANN SUTHERLAND
Certified Bowen Practitioner
2475 Ohai-Clifden H/way
Orawia R.D. 2
Southland 9682
phone 03 225 5716
Fax 03 225 5716

Bowen Therapy is a gentle soft tissue manipulative therapy. Through manipulation tension in soft tissue is released reducing pain and restoring movement and mobility. Also offering Scenar Therapy



Specialising in
Dairy Conversions
Rural Fencing
Post & Rail

H & L Gill Fencing
Eastern Bush
Phone 021 225 5489
After Hours 03 225 5488
Email hamish.lyndal@woosh.co.nz



WAI AU MEMORIAL LIBRARY

Friday morning - 10.00 - 11.30 am
Afternoon - 2.30 - 4.00 pm
Evening - 7.00 - 8.00 pm

Our library has in stock:

Westerns, Large Print books, magazines, jigsaws, Fiction and Non Fiction - in the adult section.

We have picture books (for pre schoolers), easy readers and young adult books.



We usually have a book exchange approximately every four months with the library in Winton - this allows us to change our books and provide a continuing supply of new titles.

To avoid overdue fines, books may be left at Tuatapere Service Station (in a plastic bag please).

WAI AU MEMORIAL LIBRARY CHRISTMAS HOURS

OPEN: 19th December 2014

CLOSED: 26th December, 2014
2nd January, 2015

OPEN: 9th January, 2015

Tuatapere Pool update:

Christmas surprise – Holiday schedule – Supervisors still needed - Swim Club

We have a little Christmas surprise...

To say "Thank you!" to all of you that used the pool (despite the bad weather we had), made sure that the cover was put back on, and generally looked after the pool, we have a little Christmas surprise. With the help from the Southland District Council *Community "Initiatives Fund"* we purchased two large inflatables for the pool, an octagon ring and a rolling log. They are great fun and help build water confidence. They will be available in public sessions - come and check them out!

- School holiday schedule
- Public sessions will be 2 – 4pm every day until the start of Term 1 on 2 February 2015.
- There will be no public sessions on Christmas Day, Boxing Day and New Year's Day, but there will be a public session on Waitangi Day (Friday 6 February, 2 – 4pm).
- Keyholders can use the pool at any time during daylight hours, including on public holidays.
- Remember it is still worth getting a key or child ticket, particularly if we get that drought the weatherman is promising after New Year!

Supervisors

We still need help with supervision, please. Parents, let's be honest, the public sessions are mainly for the kids, a happy mayhem that has to be supervised – please help. A day a week, a day a month – anything you can do will help to keep the pool a safe place and the ticket prices down (Tuatapere prices are half of those at the Fiordland Pool).

Pool contacts: Rachael Poole - 03 226 6364 or 027 603 3369 & Diana Zdravec - 021 516 484

Waiau Swim Club – last day on 18 December and will be back after New Year on 5 February 2015

- Tuesday and Wednesday 5 – 6pm: swim training
- Thursday 4.30 – 6pm: swim coaching

Contact Dale Egerton on 03 226 6865 or 027 310 6199 or daleegerton@xtra.co.nz



Merry Christmas and a happy New Year!

Fowle Contracting Ltd

Nigel and Debbie Fowle

Ph: 03 225-5052 or 021-2266156

Round Balage and Hay

- ◆ Mowing - 6.5 m with conditioner
- ◆ Raking
- ◆ Two McHale Fusion Round Balers
- ◆ Carting and Stacking
- ◆ Hay and Straw
- ◆ Innoculate available on request

*We also buy and sell balage and
standing grass*

Agricultural Work

- ◆ Ploughing
- ◆ Discing - also from sprayed ground
- ◆ Power Harrowing
- ◆ 6m Cultivator
- ◆ 6m Roller Drill
- ◆ Leveling and Harrowing

Direct Drilling

- ◆ From brassica to grass, barley, oats etc
- ◆ Drill also available for dry hire

Contracting

- ◆ 14 tonne digger
- ◆ truck and trailer available for gravel,
dairy lanes and general cartage



Give Nigel a call to discuss any of your contracting needs big or small

TUATAPERE HANDYMAN SERVICES

- **Painting**
- **Lawnmowing**
- **Hedge Trimming**
- **General Repair Work**
- **Cleaning Out Spoutings**
- **Carpet/Upholstery Cleaning**
- **Chimney Cleaning (Burners)**
- **Weed Spraying - Driveways, Sections, etc**
- **Raised Garden Construction (samples available to view)**
- **Water blasting - Paths, Concrete Areas, Houses, Sheds, etc**
- **Wallpapering**

Barry Bennett
(03) 226 6730



Wallpaper Steamer available to hire
Fly and Spider control



Western Southland Website www.westernsouthland.co.nz



Otautau Vets Ltd



All purchases of selected-
Drench



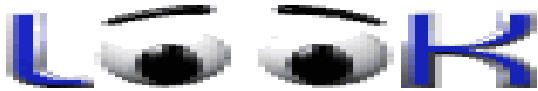
during October, November & December go
in the draw to win this fabulous outdoor
bar and stools. Prize will be drawn on
Christmas Eve.

Also don't forget to ask about your free
Christmas Ham in November & December.

Please enquire at the clinic

71 Main Street Otautau 03 2258134





Registered Electrician

Paul Swanson

INDUSTRIAL

COMMERCIAL

DOMESTIC

DAIRY

Installation & Maintenance

Tuatapere Based

Phone - 03 2266 020

Cell - 022 136 2523

swanny66@hotmail.co.nz

TUATAPERE & DISTRICT PROMOTION INC

Have you an interest in Tuatapere?

Have you any ideas to help promote

Tuatapere? Meetings are held the 3rd Thursday of every month at 8pm in the Waiau Memorial Library.

Come to the next meeting and present your ideas or offer your help for our on-going projects.

Everyone most welcome.

For further information:

Contact Ngarita Dixon (226 6613).

You can now obtain your Fishing licences from The Waiau Hotel. (Fishing licences now available from Waiau Hotel Bottle Store).

FORDE SHEARING LIMITED

Available for all new and existing clients

For all your shearing and
crutching requirements

Please phone Darin or Julie Forde

03 235 8853

027 229 7760

ERRORS AND OMISSIONS:

All care is taken but sometimes there are spelling or grammatical errors. Even worse - occasionally an article gets completely missed out. If I have missed something - please do let me know or send it to me again.

Editor-Loretta.



Ring Priscilla on (03) 2266334

TUATAPERE AMENITIES TRUST

Application forms to apply to the Tuatapere Amenities Trust will be available from the Tuatapere Health & Gift Shop from 1st January, 2015.

All applications must be submitted by 30th April, 2015.

COMMUNITY MERRY-GO-ROUND

The merry-go-round is a popular and regular activity for our young children at the Santa Parade and the Tuatapere Sports Day each year and is in the process of being repainted and repaired.

The Tuatapere & District Promotion Inc wishes to acknowledge the generous support from the Waiau Town & Country Club and the Tuatapere RSA Club toward the cost of materials.

YESTERYEARS MUSEUM CAFÉ

*Save yourself the hassle - order your
Christmas Salads now!*

- ☆ Apple
- ☆ Bean
- ☆ Beetroot
- ☆ Carrot
- ☆ Coleslaw
- ☆ Pasta
- ☆ Potato
- ☆ Rice
- ☆ Vegetable Medley



350g \$5
1kg \$10

Also Plum Duffs - family size \$12



AND

**Christmas gift
baskets for
that someone
special! - \$20**



Just phone us on 03 2266 682

**MERRY CHRISTMAS
TO ALL**

Update from Tuatapere Plunket

Another year over and we would like to thank each and every one of you who have helped make it another successful year for Tuatapere Plunket.

The latest news is that Tuatapere Plunket now has a new Heat Pump and Terra Lana Insulation. We are extremely pleased with this outcome as it will now be a lot warmer for everyone next winter. A very big "Thank

You" to Aaron and Lisa Challis for the generous grant that Tuatapere Plunket received through Food Stuffs Community Trust for the insulation and the Ministry of Education who funded our heat pump.

Tuatapere Plunket is most grateful.

We wish everyone a very Merry Christmas and a safe and Happy New Year for 2015.

We look forward to seeing everyone again in the new year when playgroup starts back in Term 1 on Tuesday 3rd February 10am-12.

Kind Regards, Helen Hammond - President

K. J. Sutherland Contracting

Bobcat T190

**With attachments: Landscape Rake, Augers, and
Trencher**

**Suitable for all landscaping, shed and yard
maintenance**

Muck-spreader and tip trailer available



PHONE KEVIN

0274 367 934 / 03 225 5716

TUATAPERE AMENITIES TRUST SECRETARY/ADMINISTRATOR REQUIRED

The Tuatapere Amenities Trust was set up from a Grant given by Meridian Energy when the water flow to the Waiau River was reduced.

The purpose of the Amenities trust is to allocate funds to non-profit groups in the Tuatapere area on an annual basis.

We are currently seeking someone to join our team as Secretary/Administrator.

The person we are looking for will have good communication and people skills, and be an experienced, organised administrator / secretary. The position will also include a small amount of basic financial bookkeeping. This is a paid position.

This role involves a small time commitment, with approx 1-3 board meetings per annum.

For a detailed Job Description please contact: Mrs Ngarita Dixon 03 226 6613

Please apply in writing to:

Mrs Ngarita Dixon

Chairman

Tuatapere Amenities Trust

15 Bridge Street

Tuatapere

S A CRACK CONTRACTING

Baleage & Hay

McPhale Fushion 3 Plus Baler/Wrapper. Film on Film.
Better Bales Better Value



The Welgar Baler and s eperate wrapper are still availabe for the more difficult areas.

Conventional Bales
From cutting to stacking

Hall Silage & Crackcorp for all your silage needs

Give us a call. From cutting to stacking.



AGRICULTURAL

Ploughing
Discing
Sowing
Roller or Direct Drill
also for HIRE

Two Diggers, Bulldozer
Grader for lanes, driveways

Cartage, Two trucks, heavy trailers. TRANSPORTER

GOOD SERVICE-GREAT RATES

0274 346 871

Cellphone

03226 6195

Office

RING STEPHEN

03 226 6817

Home

Clifden Trading & Repairs—is now open for business!!

27 Blackmount Hwy. Call Johnny Broughton on 03 2255333.

HE CAN HELP WITH -

Alloy and steel welding

Plasma cutting

Mechanical repairs

7 tonne digger and 11 tonne

dozer available

Buying and selling of farm machinery



Me: should I get into trouble for something I didn't do?

Teacher: No

Me: Good, because I didn't do my home-work



Merry Christmas

**Dagwood Dagging
2014**

Under New Ownership

- I will offer the same Friendly Service
- Competitive Rates
- No job too Big or Small
- 3 Trailers available
- Advantage of trailer-stock can be done wet

Contact me for your
Crutching & Dagging requirements

Phone Jeff Chambers

03 226 6623

Mb:027 304 2241

For all your vehicle requirements

Cars, utes, 4WDs, vans

Finance available

Contact: Murray Dowling

027 556 2655

Visit our website

www.canterburycars4x4.co.nz



Colac Bay Tavern & Holiday Park

15 Colac Bay Road, Colac Bay 03) 234 8399

Your Hosts: Jilly & Wazza



Open 7 Days from 11am

- Fresh Blue Cod Meals
- Gourmet Burgers
- Woodfired Pizza's (Wed to Sun)
- Tuesday Nights 'Steak Night'
- And a whole lot more . . .

Check out our **Outdoor Living** with
Open Fire & Wood Fired Pizza Oven
(Pizza's available **Wednesday to Sunday**)

NEW YEARS EVE PARTY

Band 9pm til 1am 'FLAMING MOES'

GREAT BAND . GREAT MUSIC

Graham's Police Report

Round up for November

November saw Police deal with a range of incidents around the district. Vehicle crashes are always a feature of Police work and again three different crashes were attended during the month. One involved a single car crash on Devery's Road intersection with the Otatau Tuatapere Road - fortunately resulting in no injuries. Police attended a serious injury crash involving a car versus pedestrian on Bridge Street in Tuatapere on the 22nd November. This occurred after the pedestrian ran across the road without checking for oncoming traffic. Ambulance transported the injured person to Southland Hospital where they underwent surgery for a serious leg injury. In Orepuki Police were called to a vehicle that had crashed on Dillon's road, on arrival the driver was found to be disqualified and heavily intoxicated. The driver has been charged with these offences along with careless driving due to the circumstances of the crash.

Domestic discord also tends to feature every month and three different domestic disputes were attended by Police in the Tuatapere area. Two have been resolved and the third is still under investigation.

In early November Police had to respond to a violent incident in the Eastern Bush area which has resulted in an 18 year old Nightcaps man being charged with Injuring with Intent relating to an assault on a female, Dangerous Driving and Sustained loss of Traction. A further complaint arising from the same incident is also being dealt with over damage to a vehicle caused by a separate person.

Police were called to an incident of reported wilful damage in the Orawia area over a dispute which resulted in damage being caused to a driveway. In a separate matter Police are also investigating a complaint received from an occupant of a house on Ferry road who has been having ongoing problems with various incidents including the smashing of one of his windows. During the period of guy fawkes Police received a complaint from a person fishing near the Waiau River bridge who had a firecracker thrown at him exploding nearby. Three teenagers walking over the bridge were the culprits but they left the scene before they were identified.

In the Blackmount area a hunter who had left his boat trailer at the Lake Monowai carpark for a couple of days between the 7th and the 9th of November returned to find his boat trailer wheels removed and stolen.

A burglary was also reported in early November where entry was forced into the the Last Light Café however nothing was identified as stolen.

Police executed a drugs search warrant at an address in the Lilburn area which resulted in a medium sized indoor cannabis operation being located. Three people are now facing a range of drug related charges between them including cannabis cultivation, supply cannabis to under 18 years, offer to supply cannabis, offering to Supply Non Approved Psychoactive substances and Unlawful Possession of a Firearm.

Spring has come to an end and summer has started although the weather appears not to have caught up yet with that fact. School holidays are almost upon us and with people heading off to do different activities and going away on holiday please keep safe on the road. Be mindful that with the alcohol drink driving limits having been significantly reduced as at 1/12/2014 if you are going to have anything to drink and then drive make sure you are within the new limits.

Graham Parsons
Tuatapere Police

HELP HELP HELP HELP HELP HELP!

WE ARE NEEDING FLOATS, TRUCKS, MACHINERY ANYTHING THAT
CAN MAKE THIS YEARS SANTA PARADE BIG AND BETTER THAN LAST
YEAR'S!

HOPE TO SEE YOU ALL DOWN THERE THIS
CHRISTMAS EVE!!





WAI HOTEL

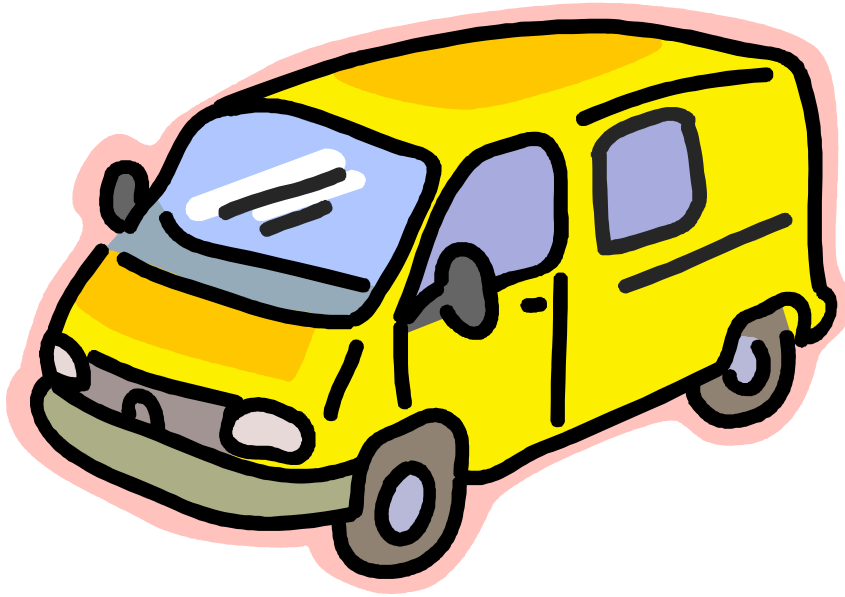
BOTTLE STORE BARGINS

<i>12 Pack Cans Speight's</i>	<i>\$ 18.50</i>
<i>1 ltr Seagers Gin</i>	<i>\$ 35.00</i>
<i>1 ltr Famous Grouse</i>	<i>\$ 39.50</i>
<i>1 ltr Jim Beam</i>	<i>\$ 39.50</i>
<i>1 ltr Bacardi</i>	<i>\$ 40.00</i>
<i>1 ltr Coruba Rum</i>	<i>\$ 41.00</i>

<i>Elliot's White & Chocolate Cream (14%)</i>	<i>\$ 16.00</i>
<i>River Rock Pinot Gris (Central Otago)</i>	<i>\$ 10.00</i>

More instore bottlestore specials

EXTRA SPECIAL
24 Packs
Speight's or Summit
\$32.90 Each



Courtesy Coach available for pick up and drop off when dining at our Hotel within the Tuatapere township boundary.

For our Country customers if you have a group of 6 – 8 dining we will come and pick you up and deliver you home again. Bookings are essential for this service and special conditions apply. Intoxicated persons will not be picked up.

Phone 226 6409 Ext 2 for your pick up.

Bistro Special

Chicken Schnitzel Meal & Pint or Glass of Wine

\$22.00

(Drink to be consumed while dining)

TUATAPERE GOLF CLUB NEWS

Welcome to our update to keep the community informed about what's happening at the club.

Men: If you are interested in playing competition the men's is on Saturday's teeing off at 1pm, for more information phone new Men's Club Captain Colin Flynn 2255230.

2014 Mens Winners

Senior: Paul Maloney – Runner Up: Wayne Baxter. **Intermediate:** Bruce Howden – Runner up: Colin Flynn

Junior A: Nigel McLellan – Runner Up: Matt Patterson. **Junior B:** Trev Phillips – Runner up: Peter Gow

Summer Cup: Colin Flynn – Runner Up: Murray Ottley.

Single K/Out: Nigel Fowle – Runner up: Wayne Laurie Double Knockout:

Nigel Fowle & Wayne Laurie Runner up: Bruce Howden & Dave McGillvary

Waiau Cup: Zack Fowle.

Greensomes: Wayne Laurie & Lynette Chambers

Runner up: Doug & Carol Erskine

Most Improved Junior: Zack Fowle **Player of the Year:** Paul Maloney

Runner up: Jon Bennett

Women: Club day is Wednesday, tee off 10.30am (18 holes) or 12pm (9 holes)

also information from Carol Erskine our new Women's Club Captain on 2266602.

2014 Womens Winners

Open Champ: B O'Brien – Runner up: L Chambers **Bronze 1 Champ:** L Chambers – Runner up: L

Fountain **Bronze 2 Champ:** C Erskine – Runner up: F Gray **Bronze 3 Champ:** T Van Engelen – Runner

up: D Fowle **Single K/Out:** W Knowler – Runner up: F Gray **Double K/Out:** C Erskine & V Balneaves

Runner up: F Gray & C O'Brien **Scott Cup:** C Erskine – Runner up: K Gow **All Irons Cup:**

C Levett

Closed Tournament: Our annual 27 Hole Closed Tournament was held on Saturday 29th Nov we were lucky with the weather and taking out the honours were Men – Peter Gow, Women – Lynette Chambers.

Twilight Golf: Is well under way but unfortunately the weather hasn't been kind to us! It's on Thursday nights from 6.00pm, 9 holes of fun golf for all ages. \$5.00 entry fee for more details ph Christene Dennison or Debbie Fowle.

Christmas Party: Our Christmas Party is set for 13th December all members welcome the competition will be an ambrose this day with Santa and a BBQ to follow all members most welcome.

After our recent AGM's we welcome our new office bearers we wish them well in there new positions

MEN: President: Peter Gow, Vice: Nigel Fowle Secretary: Christene Dennison Treasurer: Rowan

Knowler Club Captain: Colin Flynn Vice: Paul Maloney

WOMEN: Convener: Wendy Knowler - Secretary: Christene Dennison - Treasurer: Kerrie Gow - Club

Captain: Carol Erskine - Vice: Lynette Chambers

Also our club rooms have recently under gone renovations and look awesome, we would be happy to hire them out for functions. For more information phone our President Bruce Howden 226 6601

The members of the Tuatapere Golf Club wish you a safe and happy holidays. We look forward to seeing you at our annual Lions opening Tournament February 6th 2015.



UPDATE FROM TUATAPERE PLAYCENTRE!

We are on the lookout for a paddock to use for a MX Stubblecross Fun Day Fundraiser, for the 3rd Saturday of February or March. Anywhere between here and Invercargill would be brilliant. There will be no jumps added to it either.

Please contact Brooke Gardyne on 021 156 3170 if you are able to help us out.

Our Christmas party was a huge hit on Wednesday and all the children looked like they had a blast.

I would like to say a huge thanks to our president Brooke for all her hard work and time she spent in making it such a huge success. We really appreciated it!

We hope everyone has a safe and fantastic Christmas and a Happy New Year and will see everyone in 2015!

Tuatapere Yoga Classes with Yoga Life Balance

- * Do you struggle with flexibility & ease of movement?
- * Do you want better sports/life performance?

Then Yoga is for you...

Classes held at the RSA Lounge, 61 Orawia Rd


- * 1 hour classes \$8
- * 1 ½ hour classes \$10

Bro-ga (men only yoga classes) available

Book your class now!

For details on classes, contact Rebecca 021 0249 0109

maramadesign@yahoo.co.nz www.yogalifebalance.co.nz



Revive
massage therapy
"Bringing calm and balance
into your life"

Relaxation
Deep Tissue
Sports massage

60 minutes \$ 60.00
30 minutes \$ 40.00

Hot stone massage:
90 minutes \$130.00

MASSAGE

Get in touch with its benefits

Alleviates stress and
stress related conditions

Tight painful muscles

Headache / migraine

Sports injuries

Pain or restriction in
joints

Back/shoulder/neck pain

Insomnia

Arthritis

Post operative recovery

Fibromyalgia

And much more !!

MISSION STATEMENT

To provide a comfortable, safe and
secure environment in which
specialist massage techniques are
delivered by a qualified professional
therapist on an individual needs
basis to clients

I help to rejuvenate, repair and
restore the physical and mental
health and well being of each
client, with the aim of enhancing
and uplifting in synergy -

Body, Mind and Soul



RHODA KNOWLER

021 055 6650

Certified Massage
Therapist

1024 Clifden Hwy
RD1 Tuatapere

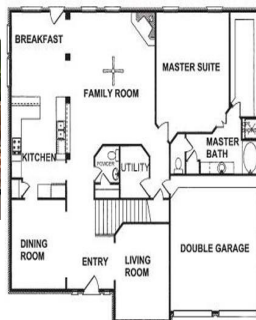
PAUL ANDERSON BUILDER

AVAILABLE FOR ALL YOUR BUILDING
REQUIREMENTS, NO JOB TOO SMALL,
COMPETITIVE RATES, REFERENCES
AVAILABLE!



Phone: 03 931 9099

Mobile: 027 890 3602



ATTENTION ALL FIREARM USERS

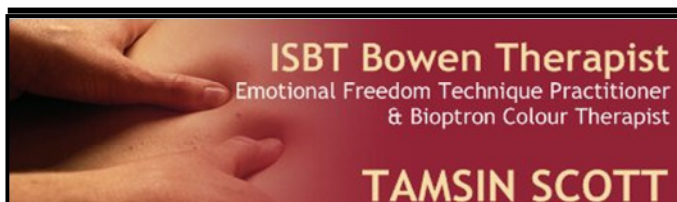
Those people wishing to sit the
Mountain Safety Course can enrol at
Tuatapere Service Station with Sid.
Courses will be held at 'Gallery 65'
Main Street, Tuatapere.

► You will need to make an appoint-
ment to attend the course.

► You will need to know your Arms
Code and seven basic rules to pass the
course.

► You need to pass the course to obtain
a Firearms licence.

Any questions contact "Sid" 03 226
6475 work or 03 225 5588 home.



Bowen Therapy is a holistic form of 'hands-on' bodywork that is gentle and effective. The therapist uses thumbs & fingers on precise points of the body to perform Bowen's unique sets of rolling type moves which stimulate the muscles, soft tissue and energy within the body. These in turn prompt the body to reset imbalances & heal injuries & long-standing complaints, resulting in pain and stress relief. Bowen Therapy is an extremely gentle and relaxing treatment suitable for any age group and physical problem. Please contact me to learn more about alternative approaches to health or to book a session. These treatments are not expensive, I'm flexible on appointment times and I also treat animals! I am based in the Lillburn Valley but also have a treatment room at the Last Light Lodge in Tuatapere.

I offer vouchers of ½ hour or 1 hour, which would make a fantastic Christmas gift for a friend or family member. I also make delicious, organic chocolates using coconut oil and coconut sugar (a sugar-free version is available) – these come in boxes of 18 chocolates (for \$15) and also make a lovely present. These are available for sale at the *Last Light Lodge* in Tuatapere (please ask for a free sample with your coffee/tea), the *Environment Centre* in Riverton, and also directly from me myself ... I can be contacted on 032266778, 02102263733 or s.malinky@gmail.com

INVERCARGILL BUDGET ADVISORY SERVICE

(We've been helping people for more than 20 years)

**Free & Confidential
Household Budgeting
for all ages**

Prompt & Friendly Service

***Break free from money problems
and move ahead***

Call 03 218 7001

We're in Community House,
46 Kelvin Street (above ANZ Bank)
P O Box 1222, Invercargill
or

Contact us through
Citizens Advice Bureau, tel 218 2217



CONTACT US TODAY

Phone 03 221 7192

Fax 03 221 7194

ryalbushtransport@clear.net.nz



- **Excavators for General Farmwork**
- **Laser Guided Drainage**
- **Gorse Mulching & Land Clearing**
- **Lane Maintenance**
- **Conversions**
- **Effluent Ponds**
- **Demolition**
- **20 Tonne Bulldozer, Roller, Grader**
- **Drain Ploughing & Alkathene Laying**
(Approx 700 deep through majority of ground conditions)
- **Nationwide Stock Cartage**
- **General Cartage**
- **Bulk Fertiliser Cartage**
- **Topdressing / GPS Bulkies**
- **Stock Feed/ Blower Truck**

General Practitioner

After a long period of locum coverage Waiau Health is very pleased to announce the arrival of our permanent General Practitioner - Dr Camilla Petersen. Camilla has come to us from Alaska where she has been experiencing the challenges of remote practice. Camilla has travelled extensively and has lived in all sorts of fascinating places including United States, Africa and the Caribbean, where she met her husband Tom (who is from Denmark).

The timing of Camilla and Tom's expected arrival in New Zealand became delayed due to the arrival of Erik, who is now three months old. Camilla, Tom and Erik are settling in to Tuatapere life nicely, although it has been a very busy time for them.

I would like to thank everyone for their patience over our extended period of locum coverage. We know this was challenging for people to be seeing different doctors, but despite this we are very pleased we were able to maintain full coverage over this time. We would like to recognise the effort made by our team throughout this period as this has been a reasonably stressful time for the practice. We would especially like to recognise the contribution made by NP Amanda McCracken who has done an extraordinary amount of on-call during this time and provided much needed continuity of care for our patients.

We are very pleased that Camilla and Tom are with us for a minimum of three years, with a view to staying longer if they like living here and if life in Tuatapere works out for the family.

WOF Health Check

With the start of summer, school holidays and with Christmas swiftly approaching we make all sorts of preparations to make sure everything is ok for an enjoyable and busy summer season.

We make all sorts of preparations to make sure the kids, livestock, pets, boat, caravan and crib are all ready for summer. But what about the poor old body? Often it gets neglected at this busy time as we just get so used to battling on. Let's face it, all of us are getting older and the body will do better if it gets a bit of TLC from time to time. So book in for your full WOF Health Check this Christmas or New Year and make sure it's on the list of things to do before Christmas each year.

Full WOF health Check - Double Consult - \$60
(including any tests – if necessary)

Wishing everyone a happy Christmas and a safe holiday... but if you do have a mishap we are only closed stat days and open all normal business days.

Full after hours coverage over holiday season through our Western Southland On Call Team – phone 2266 123
Justin Lewis, Manager

Tuatapere Medical

69a Orawia Road, Tuatapere

Monday to Friday

8:30am – 4:30pm

Ph: 22 66 123

Full Annual Health Check

Double Session + Tests - \$60

Help to Stop Smoking \$35

Nurse double consult

Wart Clinics

3rd Thurs every month

Podiatrist

Visits regularly – Phone for appt

Physiotherapist

Tuesdays & Thursdays



Tuatapere Maternity

Choose to Birth in your community

Choose your

Independent Midwife:

Jo Lundman – 027 291 8085

Jill Mitchinson – 021 252 7906

Isobel Devery - 027 226 7020

Sarah Barratt – 027 818 7782

Choose our famous

post natal care, relax and be pampered by our wonderful team of nurses and carers.



Eric Mitchell Elder Bursary Trust Fund

Applications for the above bursary are now open for any persons wishing to undertake tertiary studies in 2015.

Application forms available from:

ANZ Bank
130 Palmerston Street
Riverton
or

Health and Gift Shop
Tuatapere

Please return completed application forms to:

Mrs Raewyn Minty
88 Wairio-Wreys Bush Road
RD 1 Otautau 9689.

Applications close January 10th 2015. Any enquires phone 225 8628 Raewyn Minty (Secretary).

My mother taught me - ESP.

"Put your sweater on; don't you think I know when you are cold?"

My father taught me - HUMOUR.

"When that lawn mower cuts off your toes, don't come running to me."

My mother taught me - HOW TO BE-COME AN ADULT.

"If you don't eat your vegetables, you'll never grow up."

My mother taught me - GENETICS.

"You're just like your father."

My mother taught me about my - ROOTS.

"Shut that door behind you. Do you think you were born in a barn?"

My mother taught me - WISDOM.

"When you get to be my age, you'll understand."

My father taught me about - JUSTICE .



**MISSING - REWARD
\$1000 voucher
@ Last Light Lodge**

KOSMO is missing from our place since Sunday 30th November, 5pm. He's lab x staffy x border collie, desexed, white tip at the end of his tail, three white paws, very friendly boy. Please LOOK for him.

We put a reward of \$1000 voucher at our place for any person who will bring him back to us.

If something bad happened to him, we put the same reward for information leading to a prosecution.

03 226 6667

Barrett Shearing

Gage & Priscilla
(03)2266334 or 0275218381



For all your fencing requirements

WESTERN FENCING

SHEEP | DAIRY | DEER



Call BEVAN 0277 413 213 or SCOTT 0274 629 180

Please remember to have ALL contributions for The Western Wanderer to me by the 2nd Friday of each month.
Thanks Loretta

Alex Reid Contracting

03 225 5377 or 021 277 5308

MUCK SPREADING

Keenan Orbital Precision Muck Spreader

- * Wintering shed effluent
- * Solid or liquid
- * Calf shed / strawy muck
- * Sedimentation ponds
- * Ditch cleanings

Precision spread these rich
Sources of N, P & K fertiliser

Don't stockpile muck

SPREAD IT!



MILLARS PLUMBING & DRAINLAYING LTD

- Plumbing
- Drainlaying
- Gas Fitting
- Licensed Builder



Installers of Firestone
EPDM Pond Liners

027 4340 705



Lindsay Stephenson
Dip Phty, Dip MT, Reg
Acup, PG Dip Rehab,
MNZCP (pain management)



Andrea Murray
Dip Phty, Dip MT



Alana Malcolm
BPhy, BPhEd, Reg
Pilates Instructor,
PGCert (acup), Reg Acup

See the friendly team for help with...

- > Back and neck rehabilitation
- > Occupational health
- > Sports injuries
- > PING/Steel Pilates for cancer survivors
- > Dizziness
- > Breathing disorders
- > Chronic pain
- > Exercise programmes

Invercargill clinic open late nights

ACC available

Weekly satellite clinics in Tuatapere and Ohai



60 Deveron Street, Invercargill
P 218 6583 F 218 4105
E office@acceleratephysio.co.nz
www.acceleratephysio.co.nz



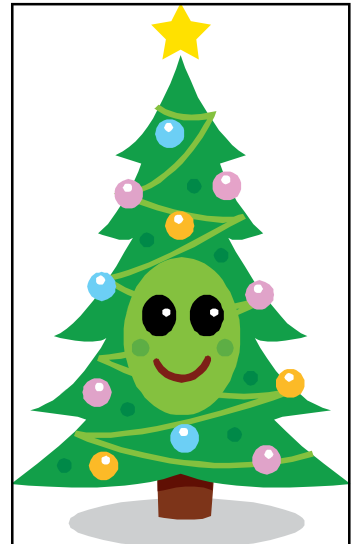
... are returning to Southland!

To get the 'BEST' Automotive Electrical Service & Sales in Western Southland,

Phone Grant on: 027-911-0123

Mobile Auto Electrics/Battery Sales

(We come to you - \$aving you money & time)



BARRETT Ag LTD

For all your Agricultural Work

- **Ploughing**
- **Discing**
- **Power Harrowing**
- **Levelling**
- **Through to Seeding**

Please give Kahu a ring on 03 2266 720 or 027 518 3448

CLIFDEN PLAYGROUP

45 Otahu Eastern
Bush Road
Every Wednesday
10am - 12pm
All mothers and
children welcome
Bring something
small for a chil-
dren's shared
morning tea!
Any queries to
Suzanne Norman
03) 2266 355



BEN MCMASTER BUILDING

Ph: 027 202 7955
benmcmaster@live.com

- Licensed Building Practitioner
- Sheds, renovations & new homes
- Based in Western Southland

You dream it, we'll build it

Gill Contracting

Ground Cultivation



- Ploughing
- Light & Heavy Discing
- Harrowing
- Aerating
- Levelling
- Cultivator
- Rotor Spiking

Sowing

- Roller Drill
- Full Direct Drilling service

Round Balage & Hay



- Mowing
- Raking
- Baling
- Wrapping
- Inoculant
- Hay & Straw
- Carting & Stacking

We also buy and sell Balage and Standing Grass

Call Josh to discuss your Contracting needs

03 225 5146 027 690 7030

WaterForce

Irrigation Systems
Pumping & Filtration
Effluent Dispersal
Water Management

20 Winton Hedgehope Highway, Winton
03 236 9805 www.waterforce.co.nz
0800 4 FORCE (4 36723)

ART @ Eighteen



Relocating
To our New Studio
At 11 Bridge Street

Also Soon to open our new
Sculpture Garden
Phone Robert 027 924 1204

WESTERN ELECTRICAL

2008 LTD

Electrical Solutions

Domestic | Industrial | Commercial

Quality Service at Competitive Prices

- New Builds, Rewiring & Alterations
- Dairy Shed, Farm & Industrial Maintenance
- Hotwater Element Replacement
- A/H Call Out Service Provided



Ph 03 225 8974 / 027 439 3787
Fax 03 225 8973

WESTERN SOUTHLAND SCANNING

**Sheep & Deer Ultrasound
Pregnancy Scanning**

For further information and bookings phone:

Craig & Veronica Wylie



418 Clifden-Blackmount
Road
RD 2 Otautau



Phone/fax
(03) 225 5309
Mobile
(027) 270 3206

TUATAPERE SERVICE STATION

20 ORAWIA ROAD

PHONE: 03 2266475

**Wishing you all a
Very Merry Christmas
and a
Happy New Year**



GIFT CARDS

**Having trouble finding that perfect gift
for Christmas get them an
MTA Gift Card**

Any dollar value can be purchased



XMAS HOURS

Thursday 25th & Friday 26th – Closed

Saturday 27th – 9.00am – 12.30pm

Sunday 28th – Closed

**Monday 29th to Wednesday 31st 8.00am to
5.00pm**

Thursday 1st & Friday 2nd – Closed

Saturday 3rd – 9.00am to 12.30pm

CLOTHING SPECIAL

**Come in and check out
our clothing specials
up to 50% off rack
and 20% off clothing packs**

IN STOCK NOW GOOD RANGE OF DIVING GEAR

GLOVES

MASKS

SNORKELS

BOOTS

KNIFES

NEW STOCK ITEM

Back country

Cuisine meals

From \$8.00

Also freeze dried squid bait

From \$4.00





MENPES

BALING SPECIALISTS

027 222 0991

Agrissentials – Back to Nature to lift Profits!

Hello, my name is Ailsa Broughton. You may know me in my previous occupation at PGGW in Tuatapere. I have been farming and growing food, all my life and have deep concerns about the sustainability of some of our current farming regimes.

I have recently joined the team at Agrissentials, as their Southland Rep and have

found the job to be a good fit with my Back to Basics philosophy on life. I have been blown away by the positive responses I have been receiving, to the products that I am marketing direct to the public at wholesale rates.

Agrissentials best on earth fertilisers system, using Rok Solid and Oceans 100, enables you to increase the mineral content and microbial mass in your soil that is paramount for better production.

Rok Solid is made of ground paramagnetic basalt rock, crushed to flour-like texture. It is mixed with seaweed, fish, humates, with microbes added. It is an energised, minerally balanced product, designed and proven, to sustain pasture growth and animal health.

If you have any concerns about conventional, soluble fertilisers leaching into our waterways, give me a call and let me explain the benefits of encouraging pasture to fix nitrogen from the air and supply all micro and macro nutrients and trace elements for good plant and hence, animal health. Your stock will eat less and rest more. You will have less dagging and drenching and better milk production, with less chemical inputs.

Most farm soils being 'fed' by chemical fertilisers are losing organic matter and the ability to hold nutrients and moisture. They are becoming drought prone and pasture growth rates are decreasing, even with applied chemical nitrogen.

Over time correct fertiliser policies, using natural products such as Rok Solid, substantially drought proofs the soil and builds organic matter.

I think more of us need to lead, not just follow. Think harder and expand our horizons beyond our back doors. Give back to the soil that sustains us all.

Agrissentials

Best on earth fertilisers

Ailsa Broughton

Mob: 027 681 1100 A/Hrs: 03 225 5333

Freephone: 0800 THE KEY (0800 843 539)

www.agrissentials.com



WAIIAU VALLEY PET SHOW 2014

Thank you so much to the wonderful people of our District who helped make the Waiau Valley Pet Show yet another success for our local children.

Congratulations to all those who participated –
Waiau Area School, , Tuatapere Playcentre, & local
Correspondence and home school students.

CHAMPION PONY

Winner: Emily Mirrielees - Windle

Runner - up:

Third:

CHAMPION LAMB

Winner: Amyee Gutsell

Runner - up: Emma Howden

Third: Nicholas Erskine

CHAMPION CALF

Winner: Alannah Skedgwell

Runner - up: Julie Skedgwell

Third: Courtney Erskine

LIVESTOCK IMPROVEMENT CORPORATION (LIC)

Best combination of calf & handler

Winner: Julie Skedgwell

CHAMPION DOG

Winner: Taylah Haggerty - Gilbert

Runner -up: Ethan Clark

Third: Tassilo Abbott

CHAMPION SMALL PET

Winner: Oliver Abbott

Runner - up: Chelsea Evans

Third: Emily Templeton

SUPREME CHAMPION PET

Winner: Emily Mirrielees - Windle

SCIENCE & TECHNOLOGY

Winner: Tassilo Abbott

Runner - up: Holly Hammond

Third: Samuel Abbott

MOST POINTS IN BAKING

Winner: Courtney Erskine

Runner - up: Shontelle Stratford

Third: Jay Egerton

MOST POINTS IN FLOWERS

Winner: Elektra Harding

Runner - up: Courtney Erskine

Third: Kathryn Hammond and Alyssa Harding

MAUREEN & GRAEME CHAPMAN AWARD FOR PHOTOGRAPHY

Winner: Angela Pierce

Runner - up: Courtney Erskine

Third: Elektra Harding

MOST POINTS IN VEGETABLES

Winner: Elektra Harding & Alyssa Harding & Kathryn
Hammond =

Runner - up:

Third:

MOST PROMISING ARTIST

Winner: Jay Egerton

Runner - up: William Devery

Third: Alannah Skedgwell

BEST OVERALL CRAFT EXHIBIT

Winner: Alannah Skedgwell

Runner - up: Angela Pierce

Third: Kathryn Hammond

MOST ENTRIES IN SHOW

Winner: Alyssa Harding

Runner - up: Kathryn Hammond

Third: Elektra Harding

This show would not be possible without the support of so many willing Judges, Helpers & Sponsors – Thank you! (Apologies if we accidentally omitted you from the list below)

Florence Dennison, Anita Erskine, Angela McKenzie, Andrew Y 9/10 helpers, Quinton Erskine, Darren Gutsell, Alton Devery, Phillip Erskine, Murray, Debbie Stratford, Mr Edgerton, Anita Collat, Jamie, Gemma, Jasmine, Donna, Helen Scott And Miss Hannah our certificate writers, Valarie, & helpers for the morning tea.

Anne-Marie Erskine

Linsey Bennett.

*RD1, CRV Ambreed Limited, Sgt Dan Stockfoods, PPG
Wrightsons, SIL GEA Farm Technologies, LIC.*

Special thanks to all ours sponsors:- *Seales Winslow*

From the Committee:

Please support our sponsors as they support our day!!

Thank you for participating


Seasons Greetings



MOUNTAINS EDGE CABINS MONOWAI

Hunting, Fishing, Mountain Biking, Kayaking
& Tramping Cabin Accommodation

8 Cabins double and single available
\$25.00 per person per night

Full Kitchen Facilities, Showers, Toilets

Playground and Tennis Courts
right across the road

75 Turbine Drive, Monowai

Ph. 03 225 8267

www.mountainsedgecabins.com

Email: mountainsedgecabins@gmail.com

ALEX REID CONTRACTING

03 225 5377 or 021 277 5308

Paddock Cultivation

- * Ploughing
- * Power Harrow
- * Ridging
- * Topping / Mowing
- * Tip Trailer
- * Levelling
- * 5 leg Acrator
- * Discing (from sprayed ground)




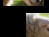

LANE GRAVELLING / MAINTENANCE

MUCK SPREADING

SHEARING & CRUTCHING

SHEEP CONVEYOR



-  Eartagging - Udder Checks
-  Capsule Administration - Mouthing
-  Vaccination - Drenching
-  Pour-on dipping
-  Racewell Scales & 3 Way Draft



Thank You ALL

The Tuatapere Lions Club Wish to THANK THE FOLLOWING:
The Farmers who donate their Slinkskins to the Ambulance,
The Community Trust of Southland who gave us a grant.
All others who donated to the Lions Ambulance.

With out your kind donations this service would cost each individual \$88.00 a trip. Your donations also help fund the renewal of this Ambulance every three years. We also pay for some of the equipment inside. The volunteers are also treated well in Tuatapere. (I hope they agree)

Your donations this year with grants, and the slinkskins came to \$36,000.00

So THANK YOU ALL.

If you wish to join Lions or become an Ambulance Volunteer Don,t be shy.We need to keep this in our community.
Funded, running and ready for the future.
WITHOUT YOUR HELP WE CAN,T KEEP GOING.

So again THANK YOU ALL SO MUCH.

NEED SOMETHING BIGGER THAN A SHOVEL FOR YOUR OUTSIDE JOBS?



Handy size 1.5 tonne digger now available in the Tuatapere area.



Suitable for jobs around the home or the farm.

Phone Dwayne or Vicki Unahi

Phone 03 226 6172

HIGHWAY 99

CAFÉ BAR

027 22 22 612



New Menu & Bar Snacks

Come check it out!!

Karaoke sing-along

Saturday Nights

Come Along

OPEN TIMES

Thursday

Friday

Saturday

Sunday



GRASSY DOWNS GUMBOOT GOLF CLASSIC

15-hole Ambrose Tournament

WHEN Sat 28 February 2015 – 9am Briefing

WHERE Swale Road, Otahu Flat
Peter Cassels + David Church's Farm

WHO Enter a team of 4 (\$80 a Team)
Anyone over 18 can enter

WHY Hauroko Valley Primary School Fundraiser

WHAT 15 holes of farmland golf on prepared greens
Rolling hills to flat land

BRING Gumboots, cash, clubs and plenty of balls!

CONTACT For Entry Forms or Further Information

Paula Anderson 03 2255 447 021 143 1105



TUATAPERE SPORTS DAY, NEW YEARS DAY!!

Once again our local sports day is fast approaching (est1910) and as usual we are looking for locals to step up and help with our sports. Christine Egerton would like to step down as treasurer, Christine has been many years as treasurer, is willing to help any persons who would take over, remember the sports day is only one day a year.

Every year we struggle to get locals to help, with our aging committee; it makes me wonder what will happen in the future. This year we do have plenty of axe men to do the Xmas circuit, from Australia, America, plus 6 axe men from Nelson, not to mention the usual coasters and Canterbury choppers. Children will be well catered for with plenty of running races, egg on the spoon, and sack races. Also we are having a netball and a hoop for the young.

This year there will be no bar open so bring your own 'goodies'. There will be coffee and food outlets on the grounds.

Hope to see you all there and bring your family and friends for a great family day out.

Peter Templeton

President, Tuatapere Axemen

Athletic Society.

It's going to be a big day in Tuatapere:

Saturday, 7 February 2015

Tuatapere Summer Day!

In its third year, this will be another exciting day for all ages, with lots of art, crafts, music, fun and a few surprises on top! More details to follow but mark this day in your calendars now!

Want to be involved? Contact Diana Zdravec – 021 516 484 – diana@venturesouthland.co.nz or contact the organisers of the different activities directly.

MACPAC STUMP THE HUMP 2015

Macpac Stump the Hump is a unique, non-stop endurance walking event for people from all sporting backgrounds, and a fundraiser for the community-owned Humpridge Track. Registrations are open now. Those not fit enough to tackle the real thing will even be able to complete a cheat's version of the Stump the Hump as part of the Waiau Art Trail. P: 03 2266 739 -

E-mail : walk@humpridgetrack.co.nz - Web : www.humpridgetrack.co.nz

WAIUAU ART & CRAFTS TRAIL 2015 – open to new artists and crafts people!

The Waiau Art and Crafts Trail (in a new format) will again be one of the highlights, with two main venues on the Main Street and several others scattered around Tuatapere. Entry is free and both art and crafts will be for sale, offering the perfect opportunity to stock up on gifts for yourself and others. New artist (including young artists) and crafts people are welcome to enter the exhibitions.

Art Exhibition main venue - RSA Hall, Main Street – Friday and Saturday

Art work by various people with Southland in their hearts. Any new artists interested in being involved in the exhibition please contact Alice Pottinger: 027 2289 693 or email alice@aspirp.co.nz . Any media; no commission charged on sales.

Craft Show main venue – Pipe Band Hall, Main St – Saturday only

Those interested in exhibiting and selling their crafts please contact -

Elizabeth Chittock: 03 2266 301 or email elizabethchittock@hotmail.com

CAR BOOT SALE ANYONE?

If enough interest is shown, a Car Boot Sale will also be held on 7th February 2015, as part of the Tuatapere Summer Day, at the car park opposite the RSA Hall. If you are interested in participating,

Please contact Kerri Brown on 03 2266 557 as soon as possible and before Christmas, please.



Southland Community Law Centre
5 Tay Street Invercargill
Freephone 0800 550 800 (outside Invercargill city only)
Free Legal Information and Advice for the Community of Southland
Hours: Monday to Thursday 9:00 am to 4:30 pm

Phone 03 214 3180
Fax 03 214 3170



Friday 9:00 am to 1:30 pm

We have staff solicitors available to represent people in district court (Invercargill and Gore) – if you meet our criteria.

We also provide a free legal advice service with our roster of volunteer lawyers – appointments are necessary.

Our Case Workers provide free information and support to people with problems ranging from employment, tenancy, personal debt, education systems through to legal systems and WINZ.

We run outreach clinics fortnightly in Gore as well as in Western and Northern Southland.

Ring for an appointment.

Under special circumstances we can also do home visits.

All our services are free.

Our services are proudly funded by the Solicitors Trust & administered through the Legal Services Agency and by public donations.