



WESTERN *Wanderer*

Tūātapere | Clifden | Orawia | Blackmount | Monowai | Colac Bay | Orepuki

Cover Photo: Mike Goodwin

Issue 271

SEPTEMBER 2024

MONDAY	TUESDAY	WEDNESDAY	THURSDAY	FRIDAY	SATURDAY	SUNDAY
						1 FATHERS DAY
2 Story Time Waiau Memorial Library 10am	3	4 Wool & Craft 10-3pm The Den Flax Weaving 7pm @ Den	5 Sewing & Patchwork 10- 3pm The Den	6 Pop Up Shop New Hours 11-3pm	7 Pop Up Shop New Hours 11-3pm	8
9 Story Time Waiau Memorial Library 10am	10	11 Flax Weaving 7pm @ Den	12 Soup & Chat Tui Base Camp 11.30am	13	14 Wool Spinning Boundary Creek 10.30-12.30 Tuatapere Community Market Last Light Lodge 11- 2pm	15
16 Predator Control Meeting 7pm @ The Den Story Time Waiau Memorial Library 10am	17	18 Wool & Craft 10-3pm The Den Flax Weaving 7pm @ Den	19 Sewing & Patchwork 10- 3pm The Den	20 Deadline Content for Western Wanderer	21	22 Meridian Power Up Applications Close
23 Med Services & Health Trust AGM 7PM Story Time Waiau Memorial Library 10am	24	25 Flax Weaving 7pm @ Den	26 Soup & Chat Tui Base Camp 11.30am	27 Hauroko School Golf Tournament Fundraiser	28	29
30	<i>Coming up ...</i>	1st Oct Comm Board Meeting 3.30pm T&C Club	6th Oct Tuatapere Domain AGM	15th Oct Int Rural Women's Day	21st Oct Predator Control AGM	31st Oct Syd Slee Trust Applicatoin Close

Special thanks to



for their support with the printing

Want your event here? Let us know at
yourwesternwanderer@gmail.com

WHITE BAIT *Season Begins....*

Mike Goodwin

September begins shortly, and with it, the excitement of the whitebait season.

The Waiau River and nearby streams will soon be filled with locals and visitors eager to catch these tiny, tasty fish. Whether you're an experienced white baiter or new to the tradition, this is a time of great anticipation. But it's also important to remember the rules that help sustain our whitebait population.

A Cherished Tradition

Whitebaiting is a long-standing tradition in Tuatapere. Each spring, locals head to the rivers with their nets, hoping for a good catch. The Waiau River is one of the best spots for this beloved activity. But whitebaiting is more than just catching fish; it's a time to reconnect with nature, enjoy the outdoors, and keep our cultural heritage alive.

Protecting Whitebait

To ensure whitebaiting can continue for future generations, it's important to follow the regulations. The whitebait season in Tuatapere runs from 1 September to 30 October.

Fishing is allowed from 5 a.m. to 8 p.m. and from 6 a.m. to 9 p.m. during daylight saving time. Each person is allowed one net, which must be attended at all times, and fishing near structures like bridges or river junctions is prohibited.

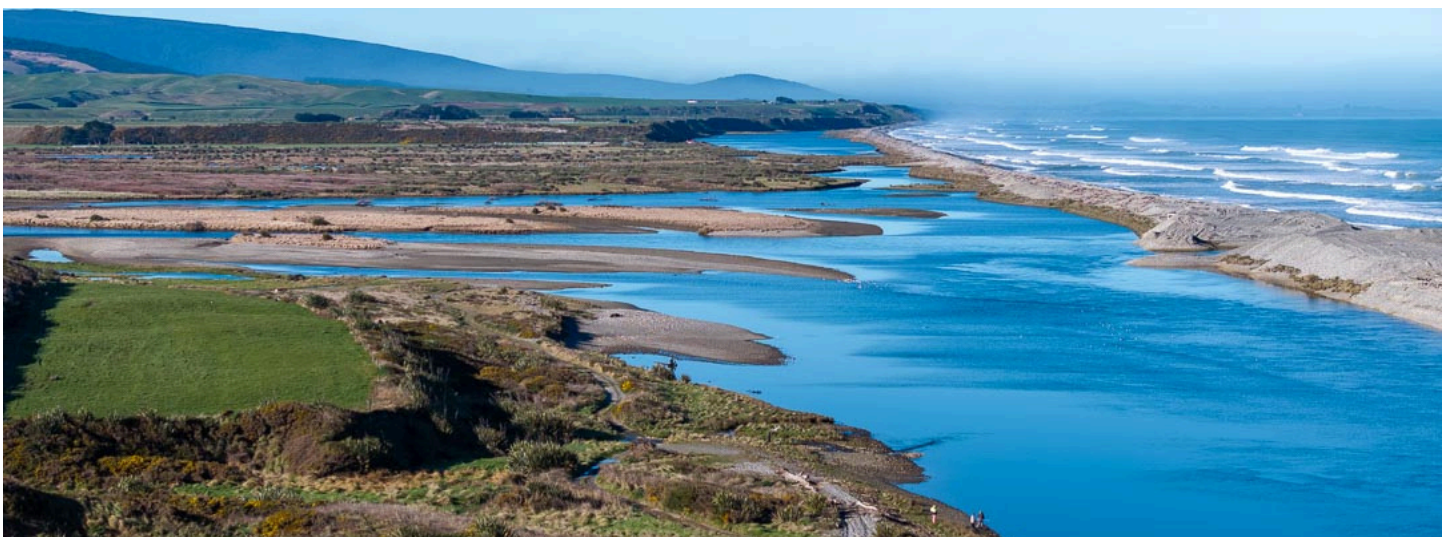
Te Waewae Lagoon

A Whitebait Haven Te Waewae Lagoon, located at the mouth of the Waiau River, is a key habitat for whitebait. Since 1998, local efforts have created over 6 hectares of wetland habitats, with 20 more hectares added since 2009. These wetlands support not only whitebait but also a variety of wildlife, making them crucial for the local fishery.

Looking Ahead

As conservation projects continue, plans are in place to improve public access to Te Waewae Lagoon, allowing more people to experience its natural beauty and importance to the whitebait fishery.

Remember, whitebaiting is about more than just the catch - it's about connecting with our environment and each other.





Hens for Sale \$13 each

18 month old Brown Shavers

Ex-commercial layers from Te Waewae Eggs
True Southland Free-range

The next lot of chickens available will be available at the beginning of June, and every two months after that.

Ph Rob 03 226 6805 or 022 044 2086



TUATAPERE HANDYMAN SERVICES

Barry Bennett
(03) 226 6730

- Painting - Interior/Exterior
- Waterblasting
- Spider & Fly Spraying
- General Repair Work
- Lawnmowing
- Weed Spraying



Tuatapere Amenities Trust Annual Distributions 2024-2025 year

The Tuatapere Amenities Trust meets each year to consider applications for funding submitted by local organisations for projects they are undertaking. The Trust wish to announce the successful applicants for the year 2024-2025 year:

Tuatapere Golf Club

Towards course signage \$2,000.00

Waiau Area School PTA

Towards playground swing set \$2,556.15

Waiau Squash Racquets Club

Towards new roof and wall cladding
\$30,000.00

Tuatapere & District Promotions Inc

Towards signage CWA Heritage Hub
\$1,000.00

Waiau Star Rugby Club

Towards cost of Domain ring fence and seating
\$19,133.76

Tuatapere Reserve Pest Control Group

Towards cost of AT220 traps \$5,000.00

WANTED TO BUY

Possum Fur, Hard deer,
Antler, Deer Velvet.

Phone Leith
027 496 3721



Want to know more about the Hump Ridge Great Walk?

For information or to book/walk the Tuatapere Hump Ridge Track – please contact the Track Operations Office directly via www.humpridgetrack.co.nz

Project Webpage: Stay informed with the facts and news via www.doc.govt.nz/hump-ridge-great-walk-project

Project Email: Get in touch to ask questions or to be added to the newsletter distribution list via email: HumpRidgeGWP@doc.govt.nz

Media Enquiries: please direct to media@doc.govt.nz



Neat Cut

Phone: Anita Green 027 506 2418
Tuesday 9-5pm, Thursday 10-8pm, Friday 10-5pm - Appointments are encouraged.



TUATAPERE TE WAE WAE
Community Board

Anne Horrell, Chairperson Contact: 021 2169 808
Email: altonlea.horrells@xtra.co.nz

Welcome to Spring! Best wishes to all of those busy with lambing and calving.

A formal meeting was held on Tuesday 6th August at Blackmount Community Centre. We were pleased to see the great turnout of community members from Monowai, Blackmount and Tuatapere. We enjoyed the chance to have chats both before and after the meeting. Peter Baker, as community representative, gave an informative and interesting account of community facilities and initiatives. For a small number of people the Blackmount and Monowai people are actively engaged in ensuring the well-being of their communities.

Leighton Hare was the Southland District Council Area Engineer for our Community Board for many years. Sadly Leighton died last month. As a mark of respect and in memory of Leighton a minute's silence was observed. Leighton was a lovely man of humour and warmth and great practicality. Adrian Humphries, Manager of Regulatory Services at SDC introduced himself and provided an update on the SDC Enforcement Policy. In encouraging compliance Adrian's report listed the components of a positive, effective approach: engagement, education, enabling and enforcement.

Environment Southland Representational Review Initial Proposal. This report recommended the CB to make a submission on the representation including the number of councilors and some minor changes to constituency boundaries. After discussion it was agreed that it would be more equitable to have a larger number of councilors in the rural constituencies and less in Invercargill Rakiura (currently based on population numbers). A submission has been made to Environment Southland.

Clifden Recreation Reserve Fence. Following a request from the Clifden Recreation Reserve Committee the TTWCB agreed to grant the Tuatapere Golf club up to \$7,300 towards replacement of a portion of the Clifden Reserve's fence. There are sufficient funds in the Clifden Reserve's account and the replacement of the fence is certainly timely.

Tuatapere Recreation Reserve Ring Fence and Barrier Gate on Elder Drive. An exciting local initiative is the replacement of the Domain ring fence (close to 100 years old). The Community Board was very happy to support this venture by the recommendation to Council that a \$20,000 contribution be

MOUNTAINS EDGE CABINS MONOWAI



Hunting, Fishing, Mountain Biking, Kayaking & Tramping Cabin Accommodation

12 Cabins
Double and Single Available
\$35.00 per person per night

Eftpos available
Full Kitchen Facilities, Showers, Toilets, Playground & the Tennis Courts right across the road!
We are 'pet friendly'

www.mountainsedgecabins.com
Email: mountainsedgecabins@gmail.com
75 Turbine Drive, Monowai. Ph. 03 225 8267



MR STEEL
TUATAPERE
PH: 027 276 6816
MALCOLM

**For all your engineering,
steel fabrication and repair needs!**

PLATE PASTURE METER READING THAT'S QUICKER AND EASIER, WITH AT THE GATE REPORTS
METER SERVICES
TROUGH CLEANING SERVICES

- Specialist in quality pasture meter reading with advanced sensor technology
- Provide 200 measurements per second or 18,500 readings over a single 500m pass
- Provides a fully integrated electronic support system
- Provides a secure web-based storage of information with easy access
- Prompt generated feed wedges for rapid decision making and seasonal comparisons
- Generate reports at the gate, supplying valuable pasture cover data and comparable results every time
- Improve heath & increase animal hydration
- Enhance production & improve water quality
- Reduce bacterial/algae contamination of trough water

CLEAN TROUGH WATER MEANS IMPROVED LIVESTOCK HEALTH

Now 2 bikes available for pasture metering




Brett George • P 027 351 3408
E platemeterservices@gmail.com

approved from funds held in the Tuatapere General Reserve. It's wonderful to see that a mighty band of young (many from the rugby club) and not so young had a massive working bee removing the old fence in preparation for the new one's installation. Great work!!

The TTWCB also passed a recommendation to Council that \$8,000 be approved for the installation of a barrier gate and signage on Elder Drive. It was also agreed that a donation in appreciation be given annually to the person with the gate responsibility.

SDC Representation Review. The CB were presented a report where the recommendations were to retain 12 councillors, 5 wards, 9 Community Boards (some small boundary changes), 2 Community Boards will continue to have sub divisions and there will be some corrections to Ward and Community Board names to include macrons. The CB agreed to make a submission to support the proposal.

Councillor Update. Cr Derek Chamberlain reported back from the Council table.

Community Board Reporting. Prepared by Stella O'Connor (Community Partnership Leader) this included local updates. The Tuatapere Railway Station Request for Information submissions process resulted in a face to face discussion with a group to discuss more information (addressed later in this report). Clifden Hall: staff is currently preparing a report for the Board's October meeting covering a suggested process for the hall's future options. Orawia Hall: structural drawing plans for repair work are underway. Domain Ditch Clean: This job has been completed by Downer and Harry's Machines. New 'no camping' signs have been installed on Grandview Terrace at Orepuki and a new Hirstfield Reserve sign will be erected stating No Horses, Dogs Under Control and On A Leash. Orepuki Fire Station Water Tanks: due to the need for urgent replacement SDC have arranged for quotes to remove the old tanks, replace with new and connect all the plumbing so fire trucks can access the water. SDC staff will support the Promotions' Group and Voluntary Fire Brigade in accessing funds.

Chairperson's and Community Board Members Reports. The Chair and members of the Community Board reported back on various activities, meetings and observations.

The Historic Railway Station Redevelopment Options. Following a Request for Information in regards the future use of the Tuatapere Railway Station a response was received from the then to be formed Tuatapere Railway and Heritage Trust Board indicating the intention to run the station as a Charitable Trust for the benefit of the community. This includes restoration following historical plans, running as an Information Centre with the option for a commercial lease to assist with ongoing costs. The Trust would have access to the already allocated \$310,000 Better- off Funding from the Government.



Melanie - your local salesperson

I am proud to be serving my local area, helping people from all walks of life meet their property goals.


After some great sales so far this year, I have a number of buyers still looking.

If you would consider selling, give me a call!

Mel Muldrew
021 068 5262
melanie.m@toddco.nz
TODDCO.NZ
William Todd & Co Ltd, Licensed (REAA 2008)



Choose Local. Choose Melanie.
Serving Southland since 1865.



Irrigation Systems
Pumping & Filtration
Effluent Dispersal
Water Management

20 Winton Hedgehope Highway, Winton
03 236 9805 www.waterforce.co.nz
0800 4 FORCE (4 36723)



C: 0274 247 102
T: 03 225 8652
E: admin@drakeplumbing.co.nz

KIERAN DRAKE
Certifying Plumber
& Drainlayer

For all your fencing requirements

WESTERN FENCING

SHEEP | DAIRY | DEER



Call BEVAN 0277 413 213



DAGWOOD DAGGING

Available now to all new and existing customers for all your crutching requirements.

3 Stand or Single trailer available
7 days a week, wet or dry.



No job too big or too small.
Competitive rates

Jeff Chambers
027 3042 241

Waiau Town & Country Club

<https://www.waiautownandcountryclub.co.nz>
Phone: 03 2266 489 | Address: 41 King St Tuatapere
✉ waiautcc@gmail.com |  facebook.com/waiautcc

 Courtesy Van Available

Club Opening Hours

Mon - Thurs 4pm till close.
Fri 3pm - close.
Sat Noon - close.
Sun 3pm - close.

New Members Always Welcome!
Just pop in or call the club for a nomination membership form.
Annual membership 2022/23 is \$50 p/p or \$30 p/p for pensioners.

Bistro Hours **Thursday - Sunday 5 - 9pm***
(*Bistro may close from 7:30pm onwards if not required)

 We are the perfect place for your functions/birthdays!

Keep an eye on our Facebook Page for more details on upcoming events ...

We can cater! Call us to discuss options! 03 22 66 489

Waiau Town & Country Club
Members and their Invited Guests

Community Board Continued...

At the meeting the Community Board approved the Tuatapere Heritage Railway Trust Board proposal on confirmation that they have achieved charitable status and delegates SDC staff to enter into a grants agreement for financial drawdown of the grant funding, once project milestones have been achieved. The Tuatapere Heritage Rail Trust will provide regular updates to the Community Board on the project status. As a Board we are very excited that we have a positive way forward for our iconic railway station; an historic hub which will give great pleasure in the restoration process.

Next Community Board Meeting will be held on Tuesday 1 st October at 3.30pm at the Waiau Town and Country Club. All welcome!



Bring along a team of four to enjoy this fun Ambrose style tournament at the Tuatapere Golf Course on **27th September**.

This event is organised by the children in Rātā class at Hauroko Valley Primary School to raise funds for their school camp in November along the Humpridge track.

Food, such as a BBQ lunch, home baking, and a light afternoon tea, is all Included in the entry fee.

Entry fees are \$30 per person- \$120 a team. We are restricted to 20 teams so be in quick!

Please share this event far and wide.

A big thank you to the Tuatapere Golf Course for making this event possible.

Please email: s.dobson@haurokovalley.school.nz to enter.

Christmas PARADE



REMEMBER TO GET YOUR GROUP TOGETHER TO DISCUSS YOUR PARADE CONTRIBUTIONS!

23rd December creeps up on us FAST!

John Munro at 027 412 2925.

Apply now for Meridian's Power Up Community Fund

At Meridian, we only generate from 100% renewable resources: wind, water, and sun. We're committed to doing good things with our energy. That means good for people, and good for the environment.

We're proud to back local projects in the communities around our wind farms and hydro stations with our Power Up fund.

With Power Up, your community has a say on what initiatives we support and fund. Managed by a panel of locals and Meridian staff, we're working together to build strong, sustainable communities.

Power Up Manapōuri provides grants for projects in Manapōuri, Te Anau, Tuatapere, and Clifden.

How to apply

Applications for the next funding round are open until midnight on 22 September 2024.

For more information and to apply:

visit meridian.co.nz/pu-manapouri

email community.fund@meridianenergy.co.nz

call 03 357 9732

Do you know of a community project that's working to reduce carbon emissions? Visit meridian.co.nz and search "Decarb fund" for more information.





Agricultural Contractors servicing Western Southland and beyond.

BALAGE - SILAGE - GROUNDWORK - FEED TRADING
Nigel 021 226 6156 / fowlecontracting@gmail.com



* 13 Tonne Digger * 5.5 Tonne Digger * 2.7 Tonne Digger- dry hire or operated
 * Tip Truck * Bob Cat * Augers * Post Driver * Tree Saw & Hedge Trimmer
 * Tree Trimming * Post Driving * Fencing * Cleaning of Wintering Sheds * Site
 Clearance * Cartage * Gravelling * Lane Maintenance * General Earthworks

For all enquiries and bookings please contact Lance or Alice Harris
 Lance: 027 304 3714
 Alice: 027 270 0363
 Email: lanceharris533@gmail.com
 Check us out on facebook- Harry's Machines

Shearing magazine Des Williams (editor)

Tel 07 839 2891 : Mob 0274 833 465
 Email : shearingmag@xtra.co.nz

Member NZ Guild of Agricultural Journalists and Communicators (Inc)

LAST SIDE PUBLISHING LTD
 PO Box 102, Hamilton 3240, New Zealand



Tuatapere Community Worker Support Trust

Community Christmas Lunch
 Christmas Day, 25th December
 at

Tui Base Camp

Time: 12 pm – 2 pm

To register your attendance, there will be a fee of \$20.00 per person

please contact Keri Potter 027 7575 983

all bookings and payment arrangements

Transport available.



Tūātapere Reserve Pest Control Group

The months of July/August have been slow and not as productive as previously, due mainly to sickness. We continue to maintain several trap lines in block 1(town block),with good results. We have been trapping since September 2023. We recorded over 300 possum kills and can visually see undergrowth rejuvenation. Kaka have been heard and sighted by a trustee, and we hope the pair is setting up a nest.

Our Trust has been successful in gaining funding from Environment Southland, Tuatapere Amenities Fund, Meridian Energy-power up, Tuatapere RSA, Clifden Rural Women, SDC Communities Fund, Robert Orchard-First National and sausage-sizzle sponsorship from Tuatapere Four Square. We thank these organisations/ groups/individuals for their support and foresight. Contract trapping of blocks 2,3,4 will commence in late August, and we are now in the position to purchase and place 40+ AT220 (automated traps) throughout the reserve and maintain them.

We are in the process of renewing and reviewing our MOUs with both SDC, DOC, and the governance bodies of the reserve. Both bodies have been made aware of exotic tree establishment within the 160 Hectare area, mainly along the Alton Burn, estimated as over forty years old, with rapid bush pushback, blanketing leaf coverage, prohibiting native fern and seedlings. DOC & SDC, alongside ES, have all pledged to walkabout with us soon to assess this ongoing concern. We are of the belief all seedlings have come from Elder Park, established up Alton Road years ago, bordering the reserve.

We have had some great coverage lately. Our president, Tony 'Attenborough' Shore, can be heard on a podcast made by 'the Outlet' Southland App and also an article written by David Pickett (Southland Advocate). Both of these can be viewed on our Facebook page.

Our AGM, is set for 7pm, Monday 21st October 2024, at 'the DEN', Erskine St. Light refreshments to follow and we encourage all interested parties to attend and mark your calendars. We especially encourage members from all groups that use and operate in the domain public reserve to attend.

TUATAPERE PLAYGROUP

Tuatapere Playgroup welcomes all 0-5 year olds & their parents or caregivers to come join the fun!



You'll find us at **23B Orawia Road, Tuatapere**

Friday mornings from 9am to 12pm.

Bring a packed morning tea and drink bottle.

We provide a warm, friendly atmosphere for children to form bonds and learn alongside each other and a place for parents to connect.

For more info message our Facebook page or contact Gemma on **022 040 3368**

CLIFDEN PLAYGROUP

45 Otahu Eastern Bush Road.



Join our FB Group to check if it's on:
Wednesday (during School Term)
9:30am - 12:30pm.

All mothers and children welcome.
Bring packed lunchbox for your child's morning tea.

Contact: Sarah 027 699 5234

TUATAPERE TOY LIBRARY

Tuatapere Toy Library has been a toy swap/hire service provided to the young families of Tuatapere and surrounding districts since 1989.

The purpose is to create opportunities for the little people of our community to have accessibility to toys.

A small contribution of an annual membership allows families to join the group and have access to the toys.

For more information or questions please text or ring **Nathalie Pahl** on **027 4759 075**



TUATAPERE AMBULANCE

Did YOU Know?

The Tuatapere Ambulance is a funded service by the Tuatapere Lions Club, for the residents of Tuatapere & Districts.

Should you receive an account for this service from St John, please forward it immediately to:

The Treasurer
Tuatapere Lions Club
PO Box 47
Tuatapere



Sometimes we experience difficulty in receiving the invoices for YOUR trip - so **PLEASE** do forward them on to us.
Thank you!

Tuatapere Lions Club Charitable Trust
Ambulance Committee

WESTERN SOUTHLAND HEALTH SHUTTLE

The Western Southland Health Shuttle Service travels from Otautau, Ohai, Nightcaps, Tuatapere, Riverton - covering all of Western Southland. We also connect with the Invercargill-Dunedin shuttle.

The Western Southland Health Shuttle operates Monday - Friday (excluding Public Holidays).

Bookings are required by 3pm the day prior to transport.

Ph: 0800 103 046 to book.

Please book as soon as you receive your appointment.

TUATAPERE VOLUNTEER FIRE BRIGADE

We're on the lookout for members to join this rewarding organization. We are looking for persons who are, ideally, available throughout the day.

If you think that you would like to try this (sometimes lifelong) commitment, then please feel free to come and try it!

We train on Tuesday nights at 7:30pm during daylight saving and 7pm through the winter months.

We look forward to meeting with you.





88.2 FM

Hits of the 80's, 90's & Today

POP UP SHOP

Quality second-hand goods
affordable prices

**OPEN FRIDAYS AND SATURDAYS
NEW HOURS - 11am to 3pm**



Tuatapere Presbyterian Church Hall, Main Road,
Tuatapere.

Enjoy a cuppa and a chat while there.

WANTED

HOUSEHOLD ITEMS, CLOTHING, SHOES, BOOKS,
LINEN, TOYS, AND MORE.

Your donations of any of these items are always
appreciated. These can be dropped off under the
front verandah at the church or for other options
contact me.

CHECK OUT MY WEEKLY FACEBOOK POST FOR
A SELECTION OF THE ITEMS AVAILABLE.

Carol Diack 021 110 1835.

Thank you for helping us to help the community.

WESTERN SOUTHLAND WOOL AND CRAFT GROUP

Spinning, Felt, Weaving, Knitting, Crochet.

Other crafts welcome!

1st & 3rd Wednesday of the month.

10am-3pm. \$5.

BYO Lunch.

Scout Den, Erskine Street.



For details please contact:
Helen Todd 022 103 9327



When: 10.00 - 10.30 am Monday

Where: The Library

Who: Under 5's

We're doing something new at the library. Every Monday we'll be
holding a Storytime session for the under 5s. So come along and
listen to some of our awesome stories and bring along a little friend
for Ratty to play with.

SYD SLEE CHARITABLE TRUST

Applications are open from 1st October - 31st
October 2024. For our Application Form and
Information Guide Sheet please email
ssctrust17@gmail.com

Nicky Baker, Secretary, Syd Slee Charitable
Trust

The Tuatapere Domain Committee AGM

Will be held on the 6th of October at 10.30
In the Domain Rooms on Elder Drive.
Tuatapere Domain.

New members are welcome.
All groups involved in the Domain are asked
to attend.

The Den is
AVAILABLE for
Community Groups to
book - right next to
the playground, with
plenty of parking.



Call Helen Todd to enquire
022 1039 327



**BEN MCMASTER
BUILDING**

Ph: 027 202 7955
benmcmaster@live.com

- Licensed Building Practitioner
- Sheds, renovations & new homes
- Based in Western Southland

You dream it, we'll build it

Specialising in
Dairy Conversions
Rural Fencing
Post & Rail

H Gill Fencing,
Eastern Bush
Phone 021 225 5489
After Hours 03 225 5488
Email hamish@gillfencing.co.nz



FCANZ
Fencing Contractors Association NZ
Member

CWA Central & Western Archive

Winter Hours

1 July - 30 Sept Tues - Fri from 1-4pm.
Available for group bookings outside Public Open hours/Weekends. If you and your family, or history group or society would like to visit over winter, just let us know in advance.
Email: CentralAndWesternArchive@gmail.com
or
Phone/Text: 027-2114675



Southern Land & Water Planning

We specialise in:

- Resource consents
- Farm environmental plans
- Policy advice
- DOC concessions
- Landscape plans & assessment

We take care of the paperwork,
so you can do what you do best!

Sonya: 027 5050 077
Rebecca: 027 4246 129
www.slwp.co.nz
Locally owned & operated



KIA ORA, NI HAO, KAMUSTA
Western Wanderer Readers

We've reached the halfway mark of Term 3. Year 0-3 Poetry Recitals provided an opportunity for our students to memorise a poem, and rehearse to present to an audience. Congratulations to each of our Junior poetry presenters for their superb efforts and achievements. Thanks to Christina for being our Guest Judge. Results; **Year 0-1** - 1st Grace & John, 2nd Lucy & Dex, H.C. Goldie & Tanner. **Year 1** - 1st Zara, 2nd Lachy, 3rd = Ada & Hannah. **Year 2** - 1st Sadie, 2nd Abby, H.C = Maddie, Hazel & George. **Year 3** - 1st Aoife, 2nd Alex Ed, 3rd Riley, H.C = Alex Ed, Eve, Memphis. **Year 4** - Highly Commended - Fletcher.

Poetry Recitals



The Year 4-8 students presented their speeches to families and friends. Ka pai to our Year 4-8 akonga who wrote incredible ideas for sharing, and brought these to life in their deliveries. Thank You Guest Judges Rachel and Alice for completing this challenge! From here, we held an HVP Final, where Guest Judges Nicky and Richie were tasked with final selections. What talent we have in public speaking! Results; **Year 4** - 1st - Della, 2nd Lauren, 3rd Nelly. **Year 5&6** - 1st - Angus D, 2nd Isaac, 3rd Stanley H.C - Tori & Ilyssa. **Year 7&8** - 1st Louie, 2nd Boe, 3rd Paetyn, H.C - Fergal & Libby.

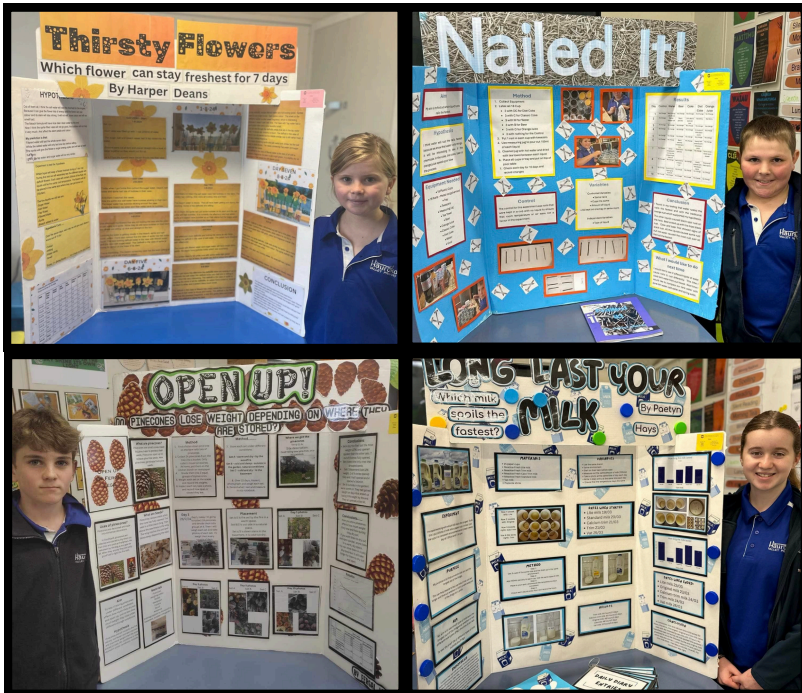


Speeches

Congratulations to Angus D and Isaac who qualified to represent HVP at the Cluster Final in Year 5&6. Angus placed 1st and Isaac 2nd, so both continue to the next round. Excellent work Louie who placed 3rd in the Year 7&8 division. Boe was placed 2nd qualifying for the Area Final in September. It was a fabulous celebration of skilled orators from St Patrick's, Otautau, WAS, and HVP. Thanks to Waiau Area School for organisation of a fantastic evening as hosts!

HAUROKO HAPPENINGS

Twenty Year 5-8 students, engaged in the Southland Science & Technology Fair. This involves a great deal of commitment, as students either design a prototype to test, or complete a scientific investigation. Work is completed at home and school, as considerable time is involved. We are proud of each learner who has committed to this challenge, Lots of learning here! Check out these impressive projects!



Approximately 17 families headed to The Remarkables for some fresh mountain air, with skiing and snowboarding on offer through NZSki. The annual HVP Ski Trip was a blast!



Our Year 5-8, netball teams competed at the CSNC Netty Festival. We were best dressed in Waiau Valley Netball & Waiau Star Rugby Club colours!! Spectacular shooting, skilled defence, positional play, and teamwork were on show. Thanks Coaches, Managers, Umpires, & supporters.



Mission Support Craft Group - Knitting Club

We offer your children the opportunity to learn traditional crafts and share in the fun of creativity and friendship.

Knitting and Crochet - Hand and Machine Sewing - Felt and bead work
Lots of sequins

Take your treasured work home for yourself or give it to others. Sometimes we make and give to hospitals, orphanages or refugees. Come and have some fun and learn new skills.

We welcome children 6 years and over for the small cost of \$5/family/day
Wednesdays 3.30pm to 5pm

At "The Den" beside the playground
Erskine Street Tuatapere.


For more information contact
Helen Todd 022 103 9327

For all your Accounting and Tax Solutions

Ask for Janice or Trevor England

 03 2266110

Aparima Accounting Ltd
57 Main Road Tuatapere


CANTERBURY CARS
4WD Specialists

For all your vehicle requirements

Cars, utes, 4WDs, vans

Finance available

Contact: Murray Dowling
027 556 2655

Visit our website
www.canterburycars4x4.co.nz

**Tuatapere & DISTRICTS
LIONS CLUB PROJECT**



SUPER DIRT

Bags@\$8.00 ready for your garden
Super Dirt can be collected from
Rabco's Yard, Groveburn Road

Phone Shirley or Stephen
(03) 226 6817

**Waiau Valley
Presbyterian Church
Tuatapere**

Main Road

We meet every **Sunday at 10.30am**

Need to know more?

Phone or message

Cedric on 022 027 3834

**WESTERN SOUTHLAND
CATHOLIC MASS**

Held Fridays at 1pm
in the Anglican Church
cnr Orawia Rd & Birch St Tuatapere.

We are a friendly, lively group of people
and everyone is very welcome to join us
especially those who are visiting the area.
Grateful thanks also to the Tuatapere
Anglican Community for sharing their
church facilities with us.

Fr Gerard Aynsley (Parish Priest)

Ph: **03 218 4123**

basilica.invercargill@gmail.com

Fr Gerard

Text preferred - 021 580 610

**CHRISTIAN LIVING BIBLE
STUDY**

7pm Tuesday Nights

The Den
Erskine Street,
Tuatapere

Contact **Helen 022 103 9327**



Loretta's Lawn Mowing Services

Available to mow lawns
whenever needed

Please contact Loretta

027 462 9527



TUATAPERE HEALTH & GIFT SHOP

(part of Riverton Pharmacy - beside Medical Centre)

69a Orawia Road Ph: (03) 226 6999

12:00pm - 5:30pm Mon-Fri

Good selection of Vitamins, Giftware &
Over-the-counter healthcare

First prescription drop-off from 1:30pm

Second prescription drop-off 4:30pm

COMMUNITY OUTLOOK ARTICLES

The Community Outlook articles are always available on the
On Natures Edge website!

<https://www.onnaturesedge.co.nz/>

SENIOR CITIZENS GROUP

Senior Citizens is a group of over 50s that meet
every **Friday afternoon at 1pm** at the rooms
behind the RSA Hall. We are always looking for
new members so if you would like a fun
afternoon playing bowls, cards or just catching
up with friends, come and join the group.

If you need a ride - we can pick you up!

Please contact:

Olive Bennett (03) 2266 477 or

Alison Bennett **027 224 2724**

ESSENTIAL OILS 100% PURE GIFTS OF NATURE
Florals Trees Plants Herbs Spices Citrus

To learn more, phone or text your local Wellness Advocate
Carol Erskine Papatotara 0274 599 654



Get your car washed, dried and windows cleaned. Price
arranged on request!

Contact: Rex Hibbs Flat 1/26 Orawia Rd, Tuatapere

The Small Job Man

Tuatapere Area

- Butcher-Boner
- Lawn Mowing
- Weeding
- Trimming
- Water Blasting
- Chainsaw work
- Wood splitting
- Small Building work
- Fence Painting

Senior Rates

Phone **John 022 164 8061**

PLEASE HAVE YOUR ARTICLES, NOTICES, OR UPDATED ADVERTS FOR THE WESTERN WANDERER SENT IN BY
20th of SEPTEMBER (for October Issue) yourwesternwanderer@gmail.com

SALVATION ARMY FAMILY STORE TRUCK

The Salvation Army Family Store Truck will come out and collect large amounts of your pre-loved furniture & other household items. This service is free.

Please call the store to organise your visit on 03 214 5380



Family Store

Donate. Buy. Help.



familystore.org.nz

Tuatapere's own Crafters Collective

COUNTRY CORNER CRAFTS

**WINTER HOURS 11 – 3PM
OPEN MOST DAYS**

- Knitwear & sewing
- Jewellery & Bobbin lace
- Woodware
- Jams, pickles, sauces
- Art works & much more
- Looking for a Tuatapere souvenir? "On Natures Edge" always in stock

ENQUIRIES

LOUISE GREBER (03) 668 6001
MAX MALSEN (021) 422 800
LYLA SHERRIFF (03) 226 6187

New members always welcome.
Want to volunteer? Let us know!



SOUTHLAND COMMUNITY LAW CENTRE

Free legal information and advice for the community of Southland. 2nd Floor, Cue Building, 33 Don Street, Invercargill. Phone (03) 214 3180

Freephone: 0800 550 800
(outside Invercargill city only)



Deb's Sewing & Repair Service

mending to making
and everything in between

Got a tricky job? Just ask!

Call or text

021 030 5667



GOOD - CHEAP - FAST but you can only pick two



International Rural Womens Day

15 October 2024

Presbyterian Church Winton

9.30am – 4pm

"Bouncing Back from Adversity"

" All welcome to attend.

Free Entry

Speakers for the day
include

Cancer Society

Leptospirosis

Well South

Chair Yoga session

Linda Reid will be our

Motivational Speaker

Presented by Southland
Interprovincial Rural Women

KEEN TO GIVE SQUASH A GO?

Enquires please contact:

Rebecca Robertson 027 424 6129



TUATAPERE COMMUNITY MARKET

Second Saturday of the month.

11am - 2pm

Last Light Lodge - 2 Clifden Highway,
Tuatapere

Text 0274599654 to book a \$5
table

TUATAPERE ENVELOPES

Envelopes printed with the
"Tuatapere on Natures Edge"

Logo can be purchased at Country
Corner Craft Shop 1A Orawia Road.

Cost \$4.00 per 10



WAIAU MEMORIAL *Library*

Burger Aliens by Opie Evans

The Mysterious spacecraft was gliding through space when suddenly, BOOM! A meteor shot Bizzy Ratan out of the sky. Keeping the ship steady, he managed to keep in the sky. He encounters an alien at Uranus. He got such a fright, he whizzed as fast as he could past it. He stops at Jupiter and went exploring. He finds an alien UFO. He quickly ran to his spaceship because he knew an alien would be nearby. He shot off into the sky at light speed and landed on Pluto instead. He was trying to be the first man on Pluto. He got out of his spacecraft and placed a flag in the middle of Pluto.



I had so much FUN doing Ratty's Great Space Race. I hope everyone else had FUN as well. There were amazing Spaceships and I had a great time taking them for test flights. Guess what? I even had some ALIENS follow me back to the library. They decided they really liked it here and found new places to live. We'll have to catch up sometime.



He then went to the moon and saw lots and lots of footprints, but they weren't human footprints. They were alien footprints. He felt concerned about people being hurt by the aliens. He rushed back to his spaceship and descended to Earth with great speed. He wanted to warn the Prime Minister so he could tell everyone on TV that an alien invasion was about to happen.

He felt scared. The Prime Minister didn't like this news at all, but wanted to contact everybody in the world, so everyone would be prepared.

However, the aliens weren't bad. They descended to Earth and ordered one million burgers from Burger Mart, because they were the best burgers in the galaxy.

The Aliens by the Space Explorer a.k.a Aurora Evans

Hi, I'm Aurora and I'm a scientist. I'm going to explore Outer space. I'm going to take you on a tour to space, so I'm going to Jupiter first.

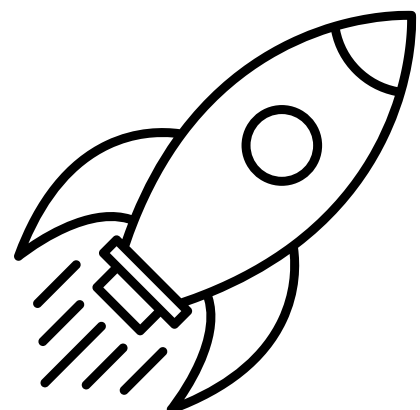
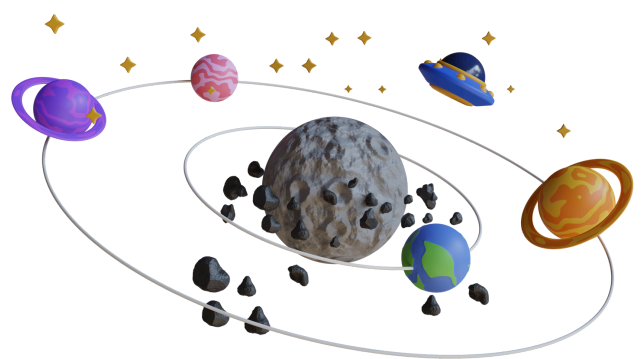


Wow, this is so cool at Jupiter. Wow! Look! There's an alien. It's purple and it has big, sharp teeth. It has one giant eye in the middle of its purple head. It looks like a giant blob of slime. Wasn't that a cool sight to see?

Moving on to the next planet is Mars. We're here in time to see some creepy aliens. What colour do you think they will be? Wow! It's a bright yellow one. Shush, we don't want to scare it. It has eight eyes and it's eating space rocks. It has twelve arms. That is a weird alien. Moving on to the last planet.

Uranus is my next destination. I'm excited to see what sort of alien we find here. It is a pink one. It has lots of squiggly arms and three eyes. Well, it has been a great time on all of the planets.

Oh no, a meteor shower. I've got to get back to Earth. What's that stinky smell I can smell? After I looked behind my chair, I found an alien. It has a pink jersey on and it is red. And I was on my way back to Earth, I was screaming the whole way home and me and the alien were best friends forever and ever. That was an exciting trip.



TUATAPERE SERVICE STATION

20 ORAWIA ROAD

PHONE: 03 2266475

HARDWARE IN STOCK

Metric bolts & nuts
Imperial Bolts & Nuts
Gutter Bots
Dyna Bolts
Coach Bolts
Tek Screws
Wood Screws
Self-tapping screws
Hinges, brackets, catches etc

HYDRAULIC FITTINGS

In stock now a good range of crimp on hydraulic fittings for agriculture hoses. We can also repair or make up new hoses.

WHATS NEW!

Have you been in and checked out our updated show room. We have lots of end of line specials worth checking out

OPEN HOURS

MONDAY – FRIDAY
8am to 5pm

WHITEBAITERS

The season is almost here so start thinking about getting those nets out and checking them. If you want to pre order a net come in and talk to us.



BOOK YOUR WOF, SERVICE OR REPAIRS IN TODAY

COMMUNITY NOTICEBOARD

TUATAPERE COMMUNITY SUPPORT WORKER

A free and confidential service.
Contact Keri if you:

- Want help with filling forms
- Need advice on who to contact
- Require financial or food assistance
- Know someone that requires assistance or are concerned about someone's well being
- Want to suggest a community related course or activity

Hours: Mon, Wed, Thu 10am - 3pm

Cellphone: 027 757 5983

E-mail: tcworker@extra.co.nz

Call in to the office at the Medical Centre just inside front door 69a Orawia Road, Tuatapere

SEWING & PATCHWORK GROUP

Come and learn to sew or share your skills
OR
Just get on with your project
Bring your lunch and sewing machine

The Den

Erskine Street, Tuatapere

Cost \$10/day. 10am-3pm
Coffee and Tea provided.
Contact: Helen Todd
022 103 9327

Dates:

Sept 5th & 19th.
Oct 3rd & 17th.
Nov 7th & 21st.



WAIAU MEMORIAL LIBRARY

Library Hours: Fridays

10:00am - 11:30am

2:30pm - 4:00pm

7:00pm - 8:00pm



For Landscaping, Land Maintenance, Gravel Supply & Cartage

**GRADES OF
CRUSHED & SCREENED GRAVELS,
ROOTRAKING, FARM TRACKS,
DAIRYLANES**



**ELEVATOR SCRAPER,
BOBCAT & ATTACHMENTS,
LANDSCAPING,
TRENCHING AUGERS**

Supplies of Gravel Ex Waiau River

River Run Screened Grades
Concrete Gravel Pea Gravel
Rejects for soak holes Crushed - AP30 & AP65
Pebbles for Sheep and Cattle yards & calf sheds
Fines suitable for cow lane capping

**K J SUTHERLAND
GRAVELLING &
AGRICULTURAL CONTRACTOR**

**2475 OHAI-CLIFDEN H/WAY
ORAWIA RD2 OTAUTAU 9682**

Ph 0274 367 934

MILNES

TRANSPORT

Local & Nationwide Livestock Cartage

Fertiliser Spreading

Bulk Cartage


**Spreading, Spraying, Muck & Slurry
application with our JCB**


Blower Truck


Gravel

For Livestock give Mike a call 0279602788

**For Bulk & Sowing give Tegan a call
0275644313**

 Milnes Transport Ltd

 www.wmwtransports.co.nz

 03 224 6154

For all your cartage needs





027 252 7933

- ✓ Renovations
- ✓ Extensions
- ✓ New Builds
- ✓ Sheds/Farm buildings
- ✓ Decks
- ✓ Pre-purchase house Inspections

*Call us for any building requirements
Ph 027 252 7933 email: aaroncbltd@gmail.com*

Tui Base Camp

★ ★ ★



**Open
from
8:00am
every day!**



Kitchen open until at least 7.30pm

**COME IN &
CHECK OUT OUR SPECIALS**

**Blue September - Sat 7th Sep. Fun day out
for the boys**

Pre-order your morning tea and lunches by
calling **(03) 226 6250** and we can have it
ready for you to pick up when it suits you.

Don't forget we have a mini-van!
Contact us to organise a night out at
Tui Base Camp (pick-up and drop-off).
Enquires to James 027 837 3521

**For all of your dine in and takeaway
requirements including:**

In-house roasted Amore Coffee
In-house made pies, sausage rolls,
cheese rolls
Range of breakfast options
Packed lunches
Catering

Phone: (03) 226 6250

www.tuibasecamp.co.nz



**Keep an eye on our
Facebook Page
for our latest updates!**



FORDE WINDERS SHEARING LTD

Available for all new and existing clients

For all your shearing and
crutching requirements

Please phone

Darin Forde 027 229 7760

Jeremy Winders 027 231 4299

McMAHON 
design studio
Experts in Design & Print Solutions

Our Services

- **GRAPHIC DESIGN SERVICES**
INCLUDING: LOGO DESIGN & BRANDING PACKAGES, PHOTO EDITING
ADVERTISING DESIGN FOR PRINT OR DIGITAL & EMAIL SIGNATURES
- **OFFICE & WORKSHOP STATIONERY**
INCLUDING: CUSTOM PRESENTATION/DISPLAY ITEMS & BRANDED GIFTWARE
- **WEDDING & EVENT STATIONERY & SIGNAGE**
- **PERSONAL STATIONERY, GIFT ITEMS & PACKAGING**
- **CERTIFICATES - PADS - CALENDARS - BOOKLETS**
NEWSLETTERS - STICKERS - LABELS - VINYL DECALS

Contact us to book your design consult today.

We'd love to learn about your project & help your vision come to life.

We are conveniently located at

9 Cumnock Street, Wallacetown

P: 027 242 8109 E: mcmahondesign@outlook.com

OPENING HOURS:

Mon & Fri: 9.30am - 2.30pm Tues - Thurs: 9.30am - 4.00pm

WAI AU HEALTH TRUST

69a Orawia Road, Tuatapere. Ph: (03) 226 6123

Monday to Friday 8:30am - 4:30pm Approved Registered ACC Provider

AGM

Annual General Meetings will be held on the 23rd September 2024 at 7:00pm for Tuatapere Community Medical Services Trust followed by Waiau Health Trust, at the Day Activities Room, 69a Orawia Road, Tuatapere. Trustee nominations are invited for the Tuatapere Community Medical Services Trust. We are also seeking expressions of interest for Directors of the Waiau Health Trust. For both - apply in writing by 18th September 2024 to PO Box 10, Tuatapere 9642 or to jo@tuataperemedical.co.nz.

Tuatapere Medical Centre continually strive to offer you the best possible healthcare experience. We are trialing a new clinical triage programme.

What is Clinical Triage?

Clinical Triage is a telephone call-back service that offers convenience for patients and increases efficiency for everyone. All patients who request a same-day appointment will have their call returned by a clinician at an arranged time, to determine the appropriate action for their concern. This will lead to a virtual or face to face consultation if deemed necessary - fees will be charged accordingly. Please continue to book your routine appointments as you always have. We are also focusing on reducing patient wait times. For this to happen you may be asked when you book if you have more than one concern - this will enable our staff to book adequate time. All appointments are of 15-minute duration and when this time is exceeded you will be charged accordingly. The consult time consists of the assessment, examination, writing notes, prescribing medications and all necessary referrals.

Repeat Prescription Requests:

Our same day request is \$30.00 per request. Therefore, it is in your best interests to phone a week ahead to give our Practitioner time to review your file and allow adequate time to arrange an appointment if necessary.

Medeior:


Recently you may have received your account via a text or email. You will see a payment link in either of these methods which refers to Medeior, please be assured that this is a legit and safe payment option and is not spam or corrupt.

After Hours Care:

Tuatapere Medical Centre continue to offer an after-hours service. If you are unwell and require medical care or advice outside of our normal business hours, call 032266123 - you will automatically be connected to our afterhours triage service, Ka Ora. Ka Ora's qualified professionals will discuss your concerns and advise you of the process to be followed. If deemed that you need urgent care, they will contact one of our on-call practitioners; this could be either Tuatapere or Otautau Medical Centre. Should either team be unavailable, you will be connected to one of their available medical practitioners. Our teams will do their best to offer you the best service we possibly can.

Please respect our staff's personal time and do not contact them on their personal phones or via other means. It puts them in a difficult position when they have to decline your requests for medical assistance when they are not on duty. I appreciate your understanding.

As always, please get in touch with me if you have any questions or concerns.



Jo Sanford (Manager)
Cell: 027 295 0429

BARRETT *Ag* LTD

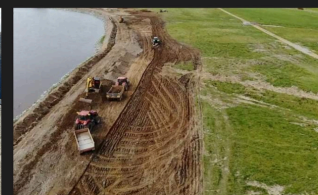
FULL SILAGE AND BALEAGE SERVICE



ALL CULTIVATION
INCLUDING DIRECT DRILL
AND STRIP TILLING - PRECISION PLANTING



EXCAVATION
20 TONNE DIGGER/ GRADER
D85 BULLDOZER/ ROLLER
TIP TRUCKS AND TRAILERS



Barrett Ag Ltd
Ph: Kahu- 027 5183 448
E: barrettagltd@gmail.com
FB: Barrett Ag



Waiau Squash Club

Well, another season finished, and for a little club, we certainly pack a punch. 2024 has been a fantastic year for our club socially and squash-wise.

Thanks to our committee members, especially President Rebecca Robertson and Treasurer Kate Egerton, for an amazing job. To all our members for supporting the club at our quiz night in June, which raised an awesome \$6,600, thanks to all the generous auction donations, to the community for supporting it so well, and lastly, to Tim, our 'Quiz Master' extraordinaire. Also, thanks to our amazing members who graze our calves; this is a great fundraiser for our club and not possible without you guys.

Shield

This year we got our hands on the mighty shield (just like the Ranfurly Shield in rugby) we traveled to Clinton where we won 5-3 it was a fantastic win and van trip home, we successfully defended it against Makerewa, but then the very social Riversdale came and took it off us. Next time guys

Interclub

Our club had two men's and two ladies' teams in the Central Western Comp. The Orawia Mens & Waiau Mojitos both took out the top teams in their semi-finals, an awesome feat; they both travelled to Te Anau for finals but couldn't retain the form of the week before, was a great night runner-up for both teams and another big van trip home. Thanks to Club Captains Tim Naylor and Anna Case and all the new players this season it's been a great season

Club Champs this year's was a great night even a Catered super to give everyone the night off winners were

Mens A Grade

Winner Blayne de Vries
Runner Up Tim Naylor

Ladies A Grade

Winner Isobel Devery
Runner Up Nic Mitchell

Mens B Grade

Winner Roger Patterson
Runner Up Ritchie Slee

Ladies B Grade

Winner Anna Case
Runner Up Kylie Greer

It's fair to say our club has had a fantastic year, look out for Summer Squash, see you all in 2025

National Youth Pipe Band of New Zealand

Peter Devery has recently returned from a trip of a lifetime to British Columbia, Canada with The National Youth Pipe Band of New Zealand.

37 Band members flew to Vancouver with Tutors, Managers and Supporters. After a couple of days practising in Vancouver they travelled to Penticton to compete in the Penticton Highland Games.

Peter competed in the Grade 2 Solo Snare Drumming section and won! The Band also competed in the Grade 2 section winning both The Set and The Medley, winning Grade 2 overall. An excellent day, with added challenge of 37 degree heat.

The Band then travelled to Silver Star Mountain Resort to join in 'Piping Hot Summer Drummer', one of biggest Piping & Drumming Summer Schools in the World, with lessons from some of his idols and making new friends, also learning a lot!

After five nights at Silver Star Mountain the band made the five hour bus ride back to Vancouver for a couple of days sight seeing and shopping.

Peter would like to thank the Southland Community Trust, The Tuatapere Lions Club and family & friends for their generous support of his trip to Canada.

He couldn't have done it with out you!



FLAX WEAVING CLASSES

Hello Lovely Community!

Exciting news for September: Our flax weaving term is starting soon! Join us every Wednesday from 7 PM to 9 PM at Tuatapere Scout Den Hall to learn sacred weaving techniques in a fun and welcoming environment.

Class Details:

- When: Thursday in September, 7 PM - 9 PM
- Where: Tuatapere Scout Den Hall
- Cost: \$10 per class
- Age Range: 18 to 100
- Materials: Provided

Project Schedule:

- 5th: Eating Bowl
- 12th: Placemats
- 19th: Bracelets
- 26th: Baskets



Registration:

Sign up on our website:

earthlivingmastery.com/flaxweaving or use the QR code

Limited spaces available—register today!

Here are some benefits of learning these weaving projects:

1. Cultural Connection: Engage with traditional weaving techniques, preserving and honoring ancestral knowledge.
2. Creativity Boost: Enhance your creativity by designing unique, handmade items like baskets, placemats, and bracelets.
3. Mindfulness Practice: Weaving is a meditative activity that promotes relaxation and mindfulness, helping to reduce stress.
4. Improved Motor Skills: Strengthen your fine motor skills and hand-eye coordination through precise and repetitive weaving motions.

These benefits make weaving not only a fun and creative activity but also a valuable skill with multiple personal and social advantages.

You can book each class individually to see if flax weaving is for you. Try one session, and if you enjoy it, continue with more!

WORLD RECORD ATTEMPT

3 Stand 8 Hours Strong Wool Lamb Record

18th December 2024

FERNDALE STATION

Turakina Valley Road

Huntermville

SHEARERS: Akuhata Waihape (Tuatapere)

Shane Ratima (Huntermville)

Jimmy Samuels (Marton)

To: Local Business and Community Members,

A team of expert shearers in conjunction with Ratima Shearing are aiming to take on the 3 stand 8 hour strong wool lamb shearing record on Friday the 13th December 2024, at Ferndale Station, Turakina Valley Road, Huntermville.

This event will showcase the skills of shearers Shane Ratima, Jimmy Samuels and Akuhata Waihape. Each of these shearers has invested time, effort and cost to date to take on the challenge of the current world record of 1976 lambs. We are reaching out to local business and community members for sponsorship support to ensure the success of their attempt. Your contribution would help to cover the fees to the World Sheep Shearing Record Society, alongside logistical expenses associated with holding a record; one of these costs would ensure the live steaming of the event.

In our experience, shearing world records draw a large and diverse audience and the aim would be for major sponsors to have their business advertised prominently within the live steaming of the event, this would mean global coverage of your brand and business services.

We would be honoured to have your business and/or names to join us as a sponsor for this historic event and are hoping to have all sponsorship confirmed by the 31st August/10th September 2024.

All enquiries for sponsorship can be made through to our Sponsorship Coordinator, Erin Wirihana at erin@hanacollective.co.nz or 0278818818; or Tina Barrett at tinashearing.barrett@gmail.com or 0276266720.

Thank you for considering this opportunity to support the boys especially Akuhata Waihape and Jimmy Samuels, who both went to school and started their shearing careers down here in Tuatapere for Barrett Shearing and Forde Shearing.

Warm Regards,

24 Shane Ratima, Jimmy Samuels & Akuhata Waihape



SILAGE • BALAGE • CULTIVATION • EXCAVATION • SLURRY • SPRAYING • CARTAGE



AGRICULTURAL CONTRACTING SPECIALISTS
WESTERN SOUTHLAND

03 2258488 | admin@rabco.nz



BAUHAUS



WAIU AREA SCHOOL
Year 1-13 Education

Live to LEARN, LEARN to Live

Kia ora Western Wanderer Readers!



ROOM 1

Room 1 have had a busy start to Term 3 with lots of exciting learning happening! We are enjoying our daily structured literacy and numeracy lessons. Art with Mrs Wilson, our senior art teacher, on a Tuesday is always a weekly highlight for us. This term we have been busy creating art works with an ocean theme and have created prints, paintings and Cyanotype prints (the original blueprint process) so far! Last week we enjoyed dressing up fancy for Mr Wedderburn and Emily's mock wedding, it was so cool to see them in their wedding clothes and we had a blast dancing afterwards! The students continue to enjoy their weekly guitar lessons with Lochie from Kennedy School of Music and the progress they are making is awesome to see! We continue cooking our way through the alphabet and have recently made pizza, queen cakes and turtle cookies. We can't wait to see what the rest of the term has in store for us!

ROOM 2

Term 2 certainly whizzed by. Some of the Room 2 highlights included learning and celebrating Matariki, exploring the Wool in Schools classroom, participating in cross country, and dressing up for Pink Day.



ARCHITECTURAL DESIGN SERVICES

- SITE FEASIBILITY STUDIES
- CONCEPT DESIGNS
- FULL WORKING DRAWINGS
- RENOVATIONS AND EXTENSIONS
- SUBDIVISIONS
- BUILDING CONSENTS
- RESOURCE CONSENTS

0204 1288 082 // WWW.BAUHAUSNZ.COM // HELLO@BAUHAUSNZ.COM



ROOM 3

Room 3 has been very busy in Term 2. We have been looking at the local river and now focusing on the Olympics. The cold weather has not stopped us from having fun in the Gym We are enjoying the PAL's leading new and exciting games in the playground twice a week.

Today we welcomed a new student into our class, Jax. We look forward to showing him the wonderful things we can do at WAS. This term we are performing at the end of the term. Hopefully the children learning the guitar will be able to accompany us when singing and dancing.

Keep warm and we will see you all at the end of the term.

ROOM 4

Room 4 has had a great start to the term. We have been learning about fractions and multiplication. The Olympics has been a captivating topic in our class, as we've followed the events and researched athletes old and new. Room 4 has also been working hard on writing our speeches and look forward to presenting them to the class and inter-school competition. We have been exploring different areas of science such as volcanoes, natural disasters and electricity. And we still have so much more to look forward to this term!



WAIATU VALLEY SHEARING LTD



Simon de Vries

Julie Heaps

027 840 9867

03 226 6212

EGERTON CONTRACTING

for all your cartage needs!

Bulk Tip Unit

Tractor available with soft hands for loading of Baleage etc

ALSO Supply available of Wood Chips / Sawdust

Beach but-end firewood loads

PH: EAMON 027 371 8674

SOUTHLIFE
Community CHURCH

Steve & Sharon
are Pastors
and we are an area church

We believe in Community and endeavour to show this the best we can by the way we care and serve!

MISSIONS
"BRIDGE CHRISTIAN MINISTRIES UGANDA"

We warmly invite you to come along to one of our services.
It would be great to see you

Sunday Service
10am Truro St, Orepuki

Steve & Sharon Calder
027 321-1108

Central & Western Archive 1st Birthday plus Hump Ridge Themed ART Exhibition/Competition



NOTE: Do you know who created the above image as we would love to credit it to them - thank you!

Our very own Tūātapere Hump Ridge Track opens as a GREAT WALK, in late October. Our celebrations include a Hump Ridge Themed ART Exhibition and Competition. Professional Artists, if you have any works suitable for exhibition please contact us as below, ASAP.

Hump Ridge Amateur Art Competition ages:

1. Pre-School
2. Primary School
3. Secondary School
4. Tertiary and Adult

Categories – see competition criteria for detail:

- a) Photos
- b) Drawings
- c) Paintings
- d) 3D Works including Fibre or Fabric Art

Opens October 2024: Hump Ridge Themed Art Fundraising (Silent Auction), Exhibitions/Competitions (Prizes) & History Display from 25th



The Competition Entries close 6pm Friday 20 September 2024:
For entry criteria, just send us an email at the address below,
or collect from our Heritage Hub 1-4pm Tues-Fri (winter hours)

At Heritage Hub (old Plunket Building), 48 Main Rd, Tūātapere

Email us at: CentralAndWesternArchive@gmail.com or Phone/Text us on: 027-2114675

Club Manager VACANCY

Waiau Town and Country Club, King Street, Tuatapere,
Southland Applications to waiautcc@gmail.com

About Us

As a member of the Clubs Association, the Waiau Town and Country Club was established in 1985. Located in the small but vibrant Tuatapere township, the WTCC has a strong and supportive membership base and operates friendly and welcoming Bar & Off-Licence 7 days a week and Bistro hours Thursday - Sunday. The wide-open grassed area at the rear of the club is available for NZMCA members and is most popular especially during the summer months which adds to the variety of clientele the WTCC serves.

Qualifications & Experience

- Good communication skills.
- Knowledge of Gaming procedures is preferred but not essential, as training will be provided.
- Experience with paying wages, balancing tills and preparing banking. Excel spreadsheet knowledge is a must.
- Ability to effectively manage staff and staff rosters.

Tasks & Responsibilities

- Day to day running of the country club bar, off-licence and management of staff and staff rosters.
- Responsible for Club Licence requirements and renewals.
- Stock control and pricing.
- Wages, Balancing of tills, gaming and general banking requirements.
- Manage/organise Event Bookings and actively advertise via social media, community magazine and website.

Benefits

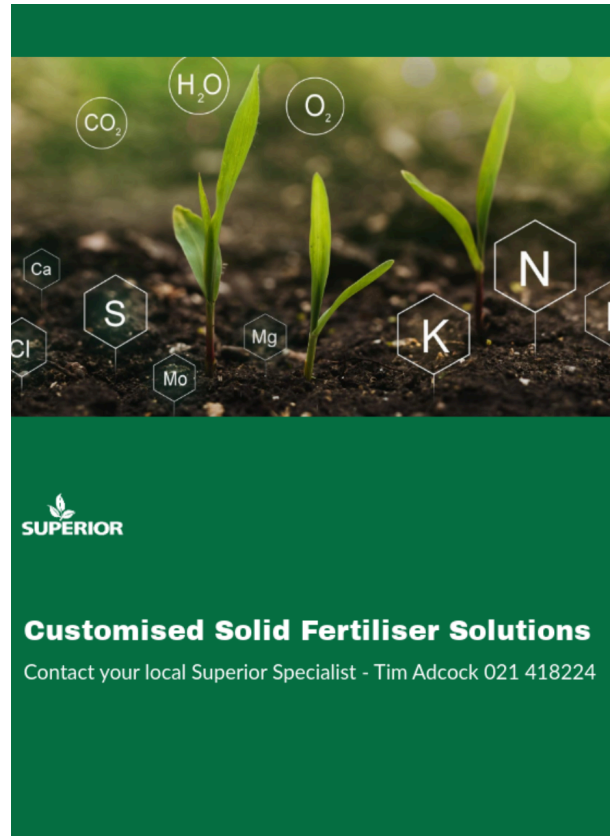
- Flexible work hours can be negotiated.
- Tuatapere is the gateway to Fiordland and is located 9 kilometres from the southern coastline of the South Island of New Zealand, which faces towards Antarctica. It is midway between Invercargill and Te Anau on the Southern Scenic Route.
- Queenstown is only a two and half hour drive away!
- Whether you're into hunting, fishing, surfing, the snow - it's ALL within reach which makes Tuatapere the perfect place to base yourself for work and recreation!
- Supportive committee members and club members.

Employer questions

Your application will include the following questions: Which of the following statements best describes your right to work in New Zealand?

- I have permanent work rights with no restrictions
- I have temporary work rights with no restrictions
- I have temporary work rights with restrictions
- I require sponsorship or a job offer

How many years of experience do you have as a Club Manager? Do you have customer service experience? How many years of experience do you have as a Bar Manager?



SUPERIOR

Customised Solid Fertiliser Solutions

Contact your local Superior Specialist - Tim Adcock 021 418224

Western Southland Wool & Craft Group

Invite you to join us for a chat and a cuppa at

SPIN IN PUBLIC DAY

Saturday 14th September from 10.30am - 12.00pm
At BOUNDARY CREEK GALLERY

TUATAPERE FREIGHT

LOCALLY OWNED & OPERATED

RUNS MONDAY TO FRIDAY
WEEKENDS BY ARRANGEMENT

Phone Brandon

027 436 4360



Alex Reid CONTRACTING

Paddock Cultivation from
Ploughing to Sowing
Dry Hire available
Aerating
Direct Drilling
Ridging
Mulching



Dairy Lane Maintenance

Tip Trailers • Vibrating Roller • 2 Tip Trucks

Sheep Conveyor

Drenching, Vaccination etc • 3 way draft

Large Skid Steer for calf shed cleaning, loading Muck Spreaders etc

4 Muck Spreaders • 16,000 litre Slurry Tanker
Pond Stirrer • Umbilical Slurry System



Rural Contractors
NEW ZEALAND

PHONE ALEX
0212775308 CELL
03 2255377 HOME

K.J. Sutherland Contracting Bobcat T190

With attachments: Landscape Rake,
Augers and Trencher

Suitable for all landscaping, shed and yard
maintenance

Muck-spreader and tip trailer available



PHONE KEVIN
027 367 934 / (03) 225 5716

NEED A JP?

The following Justices are
available by appointment:



Tuatapere: Keri Potter 027526 3137

Te Waewae Bay: Shirley Whyte
027 504 5220

Blackmount: Nicky Baker
0276435880

WESTERN ELECTRICAL

2008 LTD

Electrical Solutions

Domestic | Industrial | Commercial

Quality Service at Competitive Prices

- New Builds, Rewiring & Alterations
- Dairy Shed, Farm & Industrial Maintenance
- Hotwater Element Replacement
- A/H Call Out Service Provided

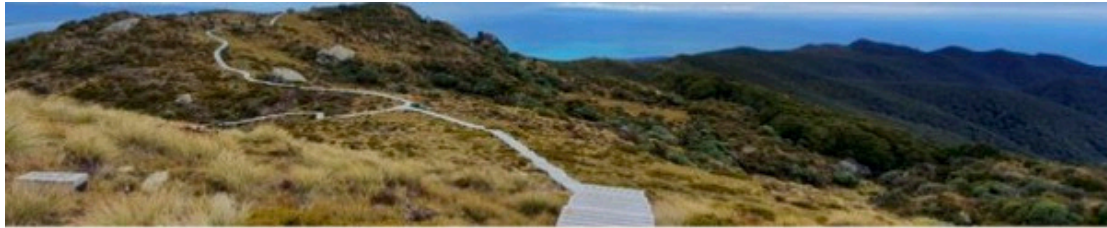


Ph 03 225 8974 / 027 439 3787
Fax 03 225 8973



WATCH
THIS
SPACE





Hump Ridge Great Walk Project

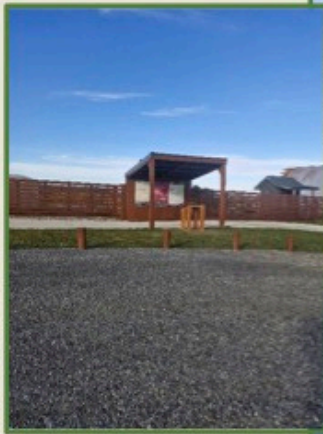
Update: September 2024

Kia ora koutou katoa Hello everyone

The Hump Ridge Great Walk Project team and their project partners, Ōraka Aparima Rūnaka and Tuatapere Hump Track Charitable Trust continue the good work towards the track becoming a Great Walk later this year.



Here are some pictures of the recent and ongoing work. Watch out for more project news in next month's Western Wanderer. *Ngā mihi.*



(L-R clockwise) The shelter at the carpark taking shape.



Snowy winter wonderland on Track Section B - Flat Creek to Ōkaka junction.



Completed steps also on Track Section B

Landscape design work for the new track entrance

For information or to book/walk the Tuatapere Hump Ridge Track - contact the Track Operations Office directly via www.humpridgetrack.co.nz

Want to know more? For the latest project news, check out the details on our webpage: [Hump Ridge Great Walk Project: Our work \(doc.govt.nz\)](https://www.doc.govt.nz/humpridge-great-walk-project).

Want to know more? Contact the project team if you have any questions or want to be added to the project's email distribution list via email: HumpRidgeGWP@doc.govt.nz

Media enquiries: please direct to media@doc.govt.nz

He rau ringa, e oti ai With many hands, the job will be finished



Department of
Conservation
Te Papa Atawhai



Hump
ridge
track



New Zealand Government