



WESTERN Wanderer

Tūātapere | Clifden | Orawia | Blackmount | Monowai | Colac Bay | Orepuki

Cover Photo: Mike Goodwin. Southern Area Schools Competition 2024

Issue 269
JULY 2024

MONDAY	TUESDAY	WEDNESDAY	THURSDAY	FRIDAY	SATURDAY	SUNDAY
1 Story Time Waiau Memorial Library 10am	2	3 Wool & Craft 10-3pm The Den Yoga @ Orepuki 5.30/6.45pm Target Shooting RSA Hall 7.30pm	4  BIRTHDAY WEEK! Sewing & Patchwork Grp 10-3pm The Den	5  Instore Day Tuatapere 11-3pm School Term 2 Ends	6	7
8 Story Time Waiau Memorial Library 10am	9	10 Yoga @ Orepuki 5.30/6.45pm Target Shooting RSA Hall 7.30pm	11 Soup & Chat Tui Base Camp 11.30am	12 FREE Mauri Ora Nurse Led Clinic @ The Den. 9am- 12pm.	13 Tuatapere Community Market Last Light Lodge 11-2pm	14
15 Predator Control Meeting 7pm @ The Den Story Time Waiau Memorial Library 10am	16	17 Wool & Craft 10-3pm The Den Yoga @ Orepuki 5.30/6.45pm Target Shooting RSA Hall 7.30pm	18 Sewing & Patchwork Grp 10-3pm The Den	19 Library Spaceship comp closes	20 Mid Winter Dinner T&C Club Deadline Content for Western Wanderer	21
22 School Term 3 Starts Story Time Waiau Memorial Library 10am	23	24 Yoga @ Orepuki 5.30/6.45pm Target Shooting RSA Hall 7.30pm	25	26 FREE Mauri Ora Nurse Led Clinic @ The Den. 9am- 12pm.	27	28
29 Story Time Waiau Memorial Library 10am	30	31 Yoga @ Orepuki 5.30/6.45pm Target Shooting RSA Hall 7.30pm				
	Coming up ...	Tuatapere Te Waewae Community Board Meeting 6 th August. 3.30pm Blackmount Community Centre.	Soup & Chat Tui Base Camp 1st/15th/29th Aug	Flax Weaving Thursdays in August @ Med Centre 7-9pm		

Special thanks to

SOUTHERN AREA SCHOOLS TOURNAMENT 2024

A Great Success!

By: Mike
Goodwin

The Southern Area Schools Tournament took place from May 15th to 17th at Waiau Area School in Tuatapere, Western Southland.

This annual event brought together six schools from the Southern Area Region—Twizel, Roxburgh, Lawrence, Maniototo, The Catlins, and Waiau—to celebrate sports, camaraderie, and community spirit.

Students competed in a variety of sports, including rugby, football, volleyball, and basketball, as well as some fun, less traditional games. The tournament was a resounding success, with students and community members working together seamlessly. Many local families generously opened their homes to host visiting students, known as billets. This hospitality was crucial to the tournament's success and highlighted the warm and welcoming nature of the community.

Throughout the event, students demonstrated great sportsmanship and enthusiasm, whether on the field, in the gym, or participating in other activities.

The variety of sports ensured that there was something for everyone, and the friendly competition fostered new friendships and strengthened existing ones.

The closing ceremony on the final day was a memorable highlight, showcasing the strong sense of community among the Southern Area Schools. The success of the event was due to the dedication and hard work of the Waiau Area School community, including local businesses, PTA, photographers, drivers, helpers, referees, caterers, students, staff, the Board of Trustees, and the Fire Brigade. Special thanks go to Lea Kollat, Mr. Bennett, and Miss Quinn for their exceptional organisation and support, ensuring everything ran smoothly.

WAIU TOWN & COUNTRY CLUB PRESENT

MID

SAT 20th
JULY
6:30pm

WINTER

Tickets available from Committee, Club Members and from the Bar

Adults \$35
Child Under 12 \$12

DINNER

D.J. GRANT FROM 9pm TILL LATE

\$5 FROM EVERY TICKET SOLD WILL BE DONATED TO TUATAPERE AMBULANCE

PGG Wrightson

Pre-lamb & Calving In-store Day

FRIDAY 5 JULY 2024

Time: 11am - 3pm (barbecue lunch provided)

Where: PGG Wrightson, 39 Main Road, Tuatapere

RSVP: by Wednesday 3 July to tuataperestore@pggwrightson.co.nz or phone 03 226 9360

To thank you for your continued support of our store and to get off farm come along for a barbecue lunch and have a yarn with PGG Wrightson team and suppliers. PGG Wrightson Technical Expert for Animal Health, Andrew Dowling, will be joining us as a guest speaker from 1pm - 1.30pm.

We will have in-store specials, spot prizes and giveaways, as well as Registered Nurses from the Tuatapere Medical Centre on-site offering free blood pressure and diabetes blood tests.

We look forward to seeing you there!

Phone 03 226 9360 tuataperestore@pggwrightson.co.nz Helping grow the country

The competition was fierce, and the results were as follows:

- Girls Basketball: Twizel
- Boys Netball: Twizel
- Target Shooting: Waiau
- Mixed Ki-O-Rahi: Twizel
- Girls Volleyball: Waiau
- Indoor Sports: Lawrence
- Boys Volleyball: Roxburgh
- Squash: Twizel
- Golf: Waiau
- Boys Basketball: Twizel
- Mixed Football: Waiau
- Quiz: Roxburgh
- Mixed Hockey: Maniototo
- Pool: Maniototo
- Claybird Shooting: Catlins
- Badminton: Roxburgh

Waiau Area School is thrilled to announce that six outstanding students from the region have been selected to represent the South at the National Area Schools Tournament in Te Awamutu during the July school holidays. These students have shown exceptional skill, dedication, and sportsmanship, earning them a place at the Nationals.

Congratulations to:

- Summer: Girls Volleyball
- Korbyn: Boys Volleyball, Ki-O-Rahi, Boys Football
- Kenzie: Girls Volleyball, Girls Football
- Meadow: Netball, Ki-O-Rahi
- Emily: Girls Volleyball, Girls Football
- Oli: Boys Volleyball, Boys Football


These talented athletes will be accompanied by Miss Quinn and Mr. Bennett. Participating in the National Tournament is a tremendous honor and an exciting opportunity for these students to showcase their talents on a larger stage.

The school community is incredibly proud of their achievements and wishes them the best of luck at Nationals.

Thank you to everyone who helped make this tournament a success. Your support and hard work are deeply appreciated. Let's continue to support our local kids and community.

Roll on Nationals!

Hens for Sale \$13 each

18 month old Brown Shavers 

Ex-commercial layers from Te Waewae Eggs
True Southland Free-range

The next lot of chickens available will be available at the beginning of June, and every two months after that.

Ph Rob 03 226 6805 or 022 044 2086

TUATAPER HANDYMAN SERVICES

Barry Bennett
(03) 226 6730

- Painting - Interior/Exterior
- Waterblasting
- Spider & Fly Spraying
- General Repair Work
- Lawnmowing
- Weed Spraying



WANTED TO BUY

Possum Fur, Hard deer,
Antler, Deer Velvet.

Phone Leith
027 496 3721

Want to know more about the Hump Ridge Great Walk?

For information or to book/walk the Tuatapere Hump Ridge Track – please contact the Track Operations Office directly via www.humpridgetrack.co.nz

Project Webpage: Stay informed with the facts and news via www.doc.govt.nz/hump-ridge-great-walk-project

Project Email: Get in touch to ask questions or to be added to the newsletter distribution list via email: HumpRidgeGWP@doc.govt.nz

Media Enquiries: please direct to media@doc.govt.nz



Phone: Anita Green 027 506 2418
 Tuesday 9-5pm, Thursday 10-8pm, Friday 10-5pm - Appointments are encouraged.



Anne Horrell, Chairperson **Contact: 021 2169 808**
Email: altonlea.horrells@xtra.co.nz

WELL DONE & THANK YOU

To all of our school children who participated heartily in the cross country events.

To the Tuatapere Lions' Club for another successful Hay Day.

To all of those who contributed to Tui humming on the 7 th /8 th June.

In addition to the Hay Day we had the Archives' team organising a wonderful book sale; the great community market at Last Light and Carol's very 'popular' pop up shop.

Keri and the Support Worker's Trust for the winter 'soup and chat' occasions.

The students from HVP & WAS who have been busily fundraising for coming events.

For all those involved in a great entertaining 'Hoe Down' at the Club on 9 th June.

To the Tui Pest control Group for your continued efforts to eradicate pests.

Waiau Star Rugby Club in your efforts to ensure the newly repaired building was ready for the Club Day on 25 th May.

To those wonderful citizens who were instrumental in the building, painting and installation of the Lilliput Libraries on Orawia Road and at the T and C Club.

COMMUNITY BOARD & TUI TRAILS NEWS

A new publication of the Tui Trails Brochures is now available in various locations in Tuatapere and Western Southland. If you haven't already 'taken a walk' pick one up and enjoy a quiet wander around our beautiful native bush tracks.

MOUNTAINS EDGE CABINS MONOWAI



Hunting, Fishing, Mountain Biking, Kayaking & Tramping
 Cabin Accommodation

12 Cabins
Double and Single Available
\$35.00 per person per night

Eftpos available
 Full Kitchen Facilities, Showers, Toilets, Playground & the Tennis Courts right across the road!
 We are 'pet friendly'

www.mountainedgecabins.com
 Email: mountainedgecabins@gmail.com
 75 Turbine Drive, Monowai. Ph. 03 225 8267



MR STEEL
 TUATAPERE
PH: 027 276 6816
 MALCOLM

**For all your engineering,
 steel fabrication and repair needs!**

PLATE METER SERVICES
 PASTURE METER READING THAT'S QUICKER AND EASIER, WITH AT THE GATE REPORTS
 TROUGH CLEANING SERVICES

- Specialist in quality pasture meter reading with advanced sensor technology
- Provide 200 measurements per second or 18,500 readings over a single 500m pass
- Provides a fully integrated electronic support system
- Provides a secure web-based storage of information with easy access
- Prompt generated feed wedges for rapid decision making and seasonal comparisons
- Generate reports at the gate, supplying valuable pasture cover data and comparable results every time
- Improve heath & increase animal hydration
- Enhance production & improve water quality
- Reduce bacterial/algae contamination of trough water

CLEAN TROUGH WATER MEANS IMPROVED LIVESTOCK HEALTH

Now 2 bikes available for pasture metering



Brett George • P 027 351 3408  
 E platemeterservices@gmail.com

The Tui Trails team, along with DOC, have recently addressed the removal of some dangerous overhanging trees on Lillian's Loop.

Big thanks to our Tui Trails volunteers!

The Orawia Community Centre will be out of action for some time following an accident causing severe damage.

Board members attended the Monowai Village Service Society AGM on 1 st June and were pleased to be involved in discussion re the community's plans/concerns.

To help mitigate the problem of flooding a ditch which runs along 2 sides of the Domain grounds has been excavated and a blocked pipe cleared.

A reminder re submissions in response to the SDC draft Long Term Plan: Due 5 July.

Formal Community Board Meeting:

4th June 2024. Minutes at www.southlandc.govt.nz
The CB approved the scope of projects for the next 3 years. This includes maintenance work at Orawia Community Centre, Orepuki Hall, Tuatapere RSA Hall, Orepuki Water Tower, Tuatapere Railway Station and the Jack & Mattie Bennett Memorial Playground.

There were 5 applications for the Community Partnership Fund. The total requested was \$58,619.50 and the available funds were \$2,260. The CB decided to not allocate any funds this round but applicants are welcome to re-apply in the next round where more funds will be available (approximately \$13,000 for 2 funding rounds: 31/8/24 & 31/3/25). Applicants are also encouraged to consider other funding avenues.

Cr Chamberlain reported from the Council table. Agendas/minutes: SDC Website. The Community Board Chair and Community Board members reported to the meeting on activities and updates related to various Community Board portfolios.

The next meeting of the Tuatapere Te Waewae Community Board will be held on Tuesday 6 th August at 3.30pm at the Blackmount Community Centre.

All welcome!

TODD & CO
REALTY

Melanie - your local salesperson

I am proud to be serving my local area, helping people from all walks of life meet their property goals.

After some great sales so far this year, I have a number of buyers still looking.

If you would consider selling, give me a call!

Mel Muldrew

021 068 5262

melanie.m@toddco.nz

TODDCO.NZ

William Todd & Co Ltd, Licensed (REAA 2008)



Choose Local. Choose Melanie.
Serving Southland since 1865.

WaterForce

Irrigation Systems

Pumping & Filtration

Effluent Dispersal

Water Management

20 Winton Hedgehope Highway, Winton

03 236 9805 www.waterforce.co.nz

0800 4 FORCE (4 36723)

DRAKE
PLUMBING & DRAINLAYING LTD

C: 0274 247 102

T: 03 225 8652

E: admin@drakeplumbing.co.nz

KIERAN DRAKE
Certifying Plumber
& Drainlayer

For all your fencing requirements
WESTERN FENCING
 SHEEP | DAIRY | DEER



Call BEVAN 0277 413 213

TUATAPERE DISTRICT LIONS ANNUAL HAY DRIVE 2024

The Tuatapere 32nd Annual Hay Drive was held on Friday 7th June with proceeds going to Hospice Southland, Tuatapere Funded Ambulance Service, Education Fund within the community. We would like to thank the farmers for their generous support. Many thanks to the businesses who donated the prizes for the day.

Lion Colin Phillips put on a display with his army tank running over cars and flattening them, enjoyed by the good crowd that attended the day.



BALEAGE

1st Alton Devery; 2nd Regan Erskine; 3rd Hamish Gill 4th James Dean; 5th Te Wae Wae Dairies; 6th Pahia Dairies; 7th Tyson Jamieson; 8th Grassy Downs

CONVENTIONAL HAY

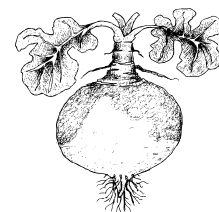
1st Jason Bennett; 2nd Colin Phillips; 3rd Nicol Horrell

BIG ROUND HAY

1st Wayne Wallace; 2nd Gerry Adams; 3rd Bruce Howden; 4th Phil Erskine; 4th Rohan Knowler

BEST CHOW

Richard Templeton



TALLEST CHOW

Peter Cassells

HEAVIEST SWEDE

1st Brittany Carran 23.1kg; 2nd Keiran O'Brien 19.2kg

HEAVIEST FODDER BEET

1st Flynn Cade; 2nd Lilly Cade

BEST TURNIP

Minessa Erskine



AUCTION PRICES

294 of Big Baleage @ \$65
 181 of Conventional Hay @ \$11
 Round Hay @ \$36
 Conventional Straw @ \$8
 Whole Crop @ \$45
 Square Baleage @ \$100
 Lucerne Baleage @ \$130




DAGWOOD DAGGING

Available now to all new and existing customers for all your crutching requirements.

3 Stand or Single trailer available
7 days a week, wet or dry.



No job too big or too small.
Competitive rates
Jeff Chambers
 027 3042 241

Waiau Town & Country Club

<https://www.waiautownandcountryclub.co.nz>
 Phone: 03 2266 489 | Address: 41 King St Tuatapere
 Email: waiautcc@gmail.com | Facebook: facebook.com/waiautcc

 Courtesy Van Available

Club Opening Hours

Mon - Thurs 4pm till close.
 Fri 3pm - close.
 Sat Noon - close.
 Sun 3pm - close.

New Members Always Welcome!
 Just pop in or call the club for a nomination membership form.
 Annual membership 2022/23 is \$50 p/p or \$30 p/p for pensioners.

Bistro Hours Thursday - Sunday 5 - 9pm*
 (*Bistro may close from 7:30pm onwards if not required)

 We are the perfect place for your functions/birthdays!

Keep an eye on our Facebook Page for more details on upcoming events ...

We can cater! Call us to discuss options! 03 22 66 489

Waiau Town & Country Club
 Members and their Invited Guests



TUATAPERE & DISTRICTS LIONS CLUB

2024 HAY BALEAGE & SILAGE COMPETITION

**We wish to acknowledge the continuing generous support
of our sponsors.**

**JJ LTD • LINDSAY & DIXON • DYNAMIC MAINTENANCE
MAINLAND MINERALS • FOWLE CONTRACTING
O'CONNELL EARTHWORKS LTD • RABCO AG LTD • SILAGE KING
SILVER FERN FARMS • SOUTHLAND HONDA
SOUTHLAND FARM SERVICES**

A C Logging	Gelerups	Riverton No1 RD
ADC	George Wilson	Rogers Yamaha
Agri Centre	Gold Pine	SEC
Alex Reid Contracting	Greenmachine	Segard Masurel Wool Buyers
Allied Fuels	Hall Silage	Shirley & Stephen Crack
Art's Contracting	Harry's Machines	Silver Fern Farms
Barrett Contracting	Hungry Hippo	Southern Suzuki
Blackwoods Pykels	Indapent Wrap	Southfuels
Briscoes	Intergrated Packaging	Southland Farm Machinery
Brunel Peaks Cafe & Bar	John Dillion Drilling	Southwest Properties
Cable Price	Kelvin Lott	Tuatapere Electrical
Caltex Oil Shop	K J Logging	Tuatapere Freight
Carran-Scott Contracting	K J Sutherland Contracting	Tuatapere Outdoors & Hardware
Carrfield Wool	Live Stock Supplies	Tuatapere Rural RD
Class Harvest Centre	Longwood Properties	Tuatapere Service Station
DT King & Co Ltd	McCulloch & Partners	Tui Base Camp
Diacks Nurseries	M&M Logging	Tyne Traders
Donaghys Ltd	Mr Steel	Waiau Area School
Dudfield Family Trust	Nutritech	Waiau Health Trust
Dwayne Unahi Contracting	Orepuki Tavern	Waiau Town & Country Club
Eamon Egerton Contracting	Otautau No 2 RD	Waiau Valley Shearing
EWL	Otautau Vets	Waikiwi Vets
Farm Chief	PGG Wrightsons	Wairauhiri Jets
Farmguard	Phillips Contracting	Western Wander
Farm Source	Power Farming	Wild South Honey
Findex	Progressive Engineering	Winton Motorcycles
FMG Insurance	Rabo Bank	
Forde Winders Shearing	RD Petroleum	
4 Square Tuatapere	Ricky Egerton Dagging	



Agricultural Contractors servicing Western Southland and beyond.

BALAGE - SILAGE - GROUNDWORK - FEED TRADING
Nigel 021 226 6156 / fowlecontracting@gmail.com



* 13 Tonne Digger * 5.5 Tonne Digger * 2.7 Tonne Digger- dry hire or operated
 * Tip Truck * Bob Cat * Augers * Post Driver * Tree Saw & Hedge Trimmer
 * Tree Trimming * Post Driving * Fencing * Cleaning of Wintering Sheds * Site
 Clearance * Cartage * Gravelling * Lane Maintenance * General Earthworks

For all enquiries and bookings please contact Lance or Alice Harris
 Lance: 027 304 3714
 Alice: 027 270 0363
 Email: lanceharris533@gmail.com
 Check us out on facebook- Harry's Machines

Shearing magazine

Des Williams (editor)

Tel 07 839 2891 : Mob 0274 833 465

Email : shearingmag@xtra.co.nz

Member NZ Guild of Agricultural Journalists and Communicators (Inc)

LAST SIDE PUBLISHING LTD

PO Box 102, Hamilton 3240, New Zealand



OREPUKI

YOGA

\$120 8 WEEK BLOCK/
 \$15 PER CLASS

3 Jul - 21 Aug

Wednesday nights, Orepuki Hall

5:30-6:30PM Vinyasa

6:45-7:45PM Gentle

Classes are accessible for beginners

Questions and registration

lnigunnyoga@gmail.com

021 1428986

Tūātapere Reserve Pest Control Group (CT)

Our monthly pest control meetings are held at the Den in Erskine Street Play Park on the third Monday of each month at 7 PM.

All are welcome to join.

In May, we successfully culled 31 mice, 18 possums, 5 rats, and 1 hedgehog. We believe these numbers are lower due to our effective culling efforts in Block 1, the bush area between Half Mile and the Domain. Despite these efforts, we continue to capture mature pests and believe there are still many more mice to catch.

We are planning to move into Block 2 soon and are gradually upgrading our traps and methods to improve our pest control measures.

Regards,
 Tony



International Rural Womens Day

15 October 2024

Presbyterian Church Winton

“Bouncing Back from Adversity”

All welcome to attend.

Free Entry

Speakers for the day

include

Cancer Society

Leptospirosis

Well South

Chair Yoga session

A Motivational Speaker to be confirmed

Presented by Southland Interprovincial

Rural Women

TUATAPERE PLAYGROUP

Tuatapere Playgroup welcomes all 0-5 year olds & their parents or caregivers to come join the fun!



You'll find us at **23B Orawia Road, Tuatapere**

Friday mornings from 9am to 12pm.

Bring a packed morning tea and drink bottle.

We provide a warm, friendly atmosphere for children to form bonds and learn alongside each other and a place for parents to connect.

For more info message our Facebook page or contact Gemma on **022 040 3368**

CLIFDEN PLAYGROUP

45 Otahu Eastern Bush Road.



Join our FB Group to check if it's on:
Wednesday (during School Term)
9:30am - 12:30pm.

All mothers and children welcome.
Bring packed lunchbox for your child's morning tea.

Contact: Sarah 027 699 5234

TUATAPERE TOY LIBRARY

Tuatapere Toy Library has been a toy swap/hire service provided to the young families of Tuatapere and surrounding districts since 1989.

The purpose is to create opportunities for the little people of our community to have accessibility to toys.

A small contribution of an annual membership allows families to join the group and have access to the toys.

For more information or questions please text or ring **Nathalie Pahl** on **027 4759 075**



TUATAPERE AMBULANCE

Did YOU Know?

The Tuatapere Ambulance is a funded service by the Tuatapere Lions Club, for the residents of Tuatapere & Districts.

Should you receive an account for this service from St John, please forward it immediately to:

The Treasurer
Tuatapere Lions Club
PO Box 47
Tuatapere



Sometimes we experience difficulty in receiving the invoices for YOUR trip - so **PLEASE** do forward them on to us.
Thank you!

Tuatapere Lions Club Charitable Trust
Ambulance Committee

WESTERN SOUTHLAND HEALTH SHUTTLE

The Western Southland Health Shuttle Service travels from Otautau, Ohai, Nightcaps, Tuatapere, Riverton - covering all of Western Southland. We also connect with the Invercargill-Dunedin shuttle.

The Western Southland Health Shuttle operates Monday - Friday (excluding Public Holidays).

Bookings are required by 3pm the day prior to transport.

Ph: 0800 103 046 to book.

Please book as soon as you receive your appointment.

TUATAPERE VOLUNTEER FIRE BRIGADE

We're on the lookout for members to join this rewarding organization. We are looking for persons who are, ideally, available throughout the day.

If you think that you would like to try this (sometimes lifelong) commitment, then please feel free to come and try it!

We train on Tuesday nights at 7:30pm during daylight saving and 7pm through the winter months.

We look forward to meeting with you.





88.2 FM

Hits of the 80's, 90's & Today

POP UP SHOP

Quality second-hand goods
affordable prices

OPEN FRIDAYS AND SATURDAYS
10am to 4pm



Tuatapere Presbyterian Church Hall, Main Road,
Tuatapere.

Enjoy a cuppa and a chat while there.

WANTED

HOUSEHOLD ITEMS, CLOTHING, SHOES, BOOKS,
LINEN, TOYS, AND MORE.

Your donations of any of these items are always
appreciated. These can be dropped off under the
front verandah at the church or for other options
contact me.

CHECK OUT MY WEEKLY FACEBOOK POST FOR
A SELECTION OF THE ITEMS AVAILABLE.

Carol Diack 021 110 1835.

Thank you for helping us to help the community.

WESTERN SOUTHLAND WOOL AND CRAFT GROUP

Spinning, Felt, Weaving, Knitting, Crochet.

Other crafts welcome!

1st & 3rd Wednesday of the month.

10am-3pm. \$5.

BYO Lunch.

Scout Den, Erskine Street.



For details please contact:
Helen Todd 022 103 9327



MAURI ORA NURSE-LED

Clinic

Maria

Our Mauri Ora Nurse is hosting free health warrant of
fitness checks on site at the Den.

No appointment necessary. Open to all.

Maria can support you and your whānau with your health needs and any chronic
conditions that you or your loved ones have.

Offering?

- ✓ General health checks
- ✓ Blood pressure checks
- ✓ Support with diabetes
- ✓ Cardiovascular checks
- ✓ Cervical screening

Where and when?

- 📍 The Den
- 📍 Erskine Street, Tuatapere
- 📅 Every second Friday,
commencing 12 July 2024
9am-12pm




**Are you looking for a space to run a
workshop, event or meet regularly
in Tuatapere?**

The Den is AVAILABLE for Community Groups
to book - right next to the playground, with
plenty of parking.

Call **Helen Todd** to enquire
022 1039 327

TOWN & COUNTRY CLUB BAR STAFF WANTED

Casual bar staff required. Must be able to
work weekends. Must have your Licence
Controller Qualification. Duty managers
Licence preferred. **CONTACT:**
waiautcc@gmail.com+64 3-226 6489



**BEN MCMASTER
BUILDING**

Ph: 027 202 7955
benmcmaster@live.com

- Licensed Building Practitioner
- Sheds, renovations & new homes
- Based in Western Southland

You dream it, we'll build it

Specialising in
Dairy Conversions
Rural Fencing
Post & Rail

H Gill Fencing,
Eastern Bush
Phone 021 225 5489
After Hours 03 225 5488
Email hamish@hgillfencing.co.nz



FCANZ
Fencing Contractors Association NZ
Member

CWA Central & Western Archive

Winter Hours

1 July - 30 Sept Tues - Fri from 1-4pm.
Available for group bookings outside Public Open hours/Weekends. If you and your family, or history group or society would like to visit over winter, just let us know in advance.
Email: CentralAndWesternArchive@gmail.com
or
Phone/Text: 027-2114675



Southern Land & Water Planning

We specialise in:

- Resource consents
- Farm environmental plans
- Policy advice
- DOC concessions
- Landscape plans & assessment

We take care of the paperwork,
so you can do what you do best!

Sonya: 027 5050 077
Rebecca: 027 4246 129
www.slwp.co.nz
Locally owned & operated

Hauroko VALLEY PRIMARY SCHOOL

KIA ORA, NI HAO, KAMUSTA
Western Wanderer Readers

Winter has arrived and we have been busy with Winter Sports including - hockey, netball, and cross country. It was our pleasure to host the Interschool Cross Country with Thornbury Primary School and Waiau Area School Year 1-8's. We appreciate the support of our neighbouring farmers - Tarnz and Sam and Hopcroft Farms Ltd for providing access to their farmland for our tracks. It was a superb place to view runners throughout the course in near perfect ground conditions.



We had several students representing Hauroko at Western Southland Cross Country and then several qualified for Southland Cross Country. The terrain at Waimumu is next level, with between 45-90 runners in each race. Along with varied terrain, with running through forest, creek, hills, lanes, paddocks and into the shed to finish. Our runners showed grit and resiliency given the wet and muddy challenge!



In between Winter Sports, Cross Country and Leadership Opportunities for our Senior Students, we continue to focus on learning goals. Our classes have continued to build Structured Literacy knowledge and skills to support handwriting, spelling, writing, and reading. Hauroko Valley students continue to enjoy opportunities to use numbers to explore mathematical concepts in contexts that are relevant to our daily lives.

HAUROKO HAPPENINGS

Our Year 7's headed to Adventure Southland where they worked together as a TEAM to achieve a variety of challenges. This included low ropes, high ropes, rock climbing, flying weka, and ultimate archery. They impressed, with their determination to push harder, reach further, and guide each other to reach their destination. Opportunities for problem-solving, critical thinking, and motivating others were demonstrated!



Meanwhile, the Year 8's attended NYLD - National Young Leaders Day in Dunedin. They stayed overnight to experience the city with Moana Pool, Baldwin Street, and Otago Toitu Museum on offer. NYLD provides inspirational speakers from all walks of life, with key messages to share. This year they were inspired by William Pike (Kiwi Explorer and William Pike Challenge), Brooke Neal (NZ Hockey Player and Entrepreneur), Te Kuhakura Boynton (Māori Millionaire Entrepreneur), Nate Wilbourne (Conservation and Climate Advocate and Founder) and to conclude they had YahYah the Musician perform. All of our Year 8s are given this opportunity as we value each and the leadership qualities they bring. We love our Year 8 Leavers tops!



Community Support Worker

SOUP & CHAT

You are warmly invited to attend our friendly catch ups.

Tui Base Camp from 11.30am



July:

11th July

August:

1st August

15th August

29th August

September:

12th September

26th September


For all your Accounting and Tax Solutions

Ask for Janice or Trevor England

 **03 2266110**

Aparima Accounting Ltd

57 Main Road Tuatapere


CANTERBURY CARS
4WD Specialists

For all your vehicle requirements

Cars, utes, 4WDs, vans

Finance available

Contact: Murray Dowling

027 556 2655

Visit our website

www.canterburycars4x4.co.nz

**Tuatapere & DISTRICTS
LIONS CLUB PROJECT**



SUPER DIRT

Bags@\$8.00 ready for your garden
Super Dirt can be collected from
Rabco's Yard, Groveburn Road

Phone Shirley or Stephen
(03) 226 6817

**Waiau Valley
Presbyterian Church
Tuatapere**

Main Road

We meet every **Sunday at 10.30am**

Need to know more?

Phone or message

Cedric on 022 027 3834

**WESTERN SOUTHLAND
CATHOLIC MASS**

Held Fridays at 1pm
in the Anglican Church

cnr Orawia Rd & Birch St Tuatapere.

We are a friendly, lively group of people
and everyone is very welcome to join us
especially those who are visiting the area.
Grateful thanks also to the Tuatapere
Anglican Community for sharing their
church facilities with us.

Fr Gerard Aynsley (Parish Priest)

Ph: **03 218 4123**

basilica.invercargill@gmail.com

Fr Gerard

Text preferred - 021 580 610

**CHRISTIAN LIVING BIBLE
STUDY**

7pm Tuesday Nights

The Den
Erskine Street,
Tuatapere

Contact **Helen 022 103 9327**



Loretta's Lawn Mowing Services

Available to mow lawns
whenever needed

Please contact Loretta

027 462 9527



TUATAPERE HEALTH & GIFT SHOP

(part of Riverton Pharmacy - beside Medical Centre)

69a Orawia Road Ph: (03) 226 6999

12:00pm - 5:30pm Mon-Fri

Good selection of Vitamins, Giftware &
Over-the-counter healthcare

First prescription drop-off from 1:30pm

Second prescription drop-off 4:30pm

COMMUNITY OUTLOOK ARTICLES

The Community Outlook articles are always available on the
On Natures Edge website!

<https://www.onnaturesedge.co.nz/>

SENIOR CITIZENS GROUP

Senior Citizens is a group of over 50s that meet
every **Friday afternoon at 1pm** at the rooms
behind the RSA Hall. We are always looking for
new members so if you would like a fun
afternoon playing bowls, cards or just catching
up with friends, come and join the group.

If you need a ride - we can pick you up!

Please contact:

Olive Bennett (03) 2266 477 or

Alison Bennett **027 224 2724**

ESSENTIAL OILS 100% PURE GIFTS OF NATURE
Florals Trees Plants Herbs Spices Citrus

To learn more, phone or text your local Wellness Advocate
Carol Erskine Papatotara 0274 599 654



Get your car washed, dried and windows cleaned. Price
arranged on request!

Contact: Rex Hibbs Flat 1/26 Orawia Rd, Tuatapere

The Small Job Man

Tuatapere Area

- Butcher-Boner
- Lawn Mowing
- Weeding
- Trimming
- Water Blasting
- Chainsaw work
- Wood splitting
- Small Building work
- Fence Painting

Senior Rates

Phone **John 022 164 8061**

PLEASE HAVE YOUR ARTICLES, NOTICES, OR UPDATED ADVERTS FOR THE WESTERN WANDERER SENT IN BY
20th of July (for August Issue) yourwesternwanderer@gmail.com

TUATAPERE SERVICE STATION

20 ORAWIA ROAD
PHONE: 03 2266475

HARDWARE IN STOCK

Metric bolts & nuts
Imperial Bolts & Nuts
Gutter Bots
Dyna Bolts
Coach Bolts
Tek Screws
Wood Screws
Self tapping screws
Hinges, brackets, catches etc

HYDRAULIC FITTINGS

We now stock a good range
of crimp on hydraulic
fittings for agriculture hoses.
We can also repair or make
up new hoses.

WHITEBAITERS

The season is almost here so
start thinking about getting
those nets out and
checking them. If you want to
pre order a net come in and talk
to us.

Have you been in and
checked out our
updated show room.
We have lots of end of
line specials worth
checking out

OPENING HOURS

Monday – Friday
8.00am to 5.00pm

WAIAU MEMORIAL *Library*

RATTY SAYS

I've been a very busy Ratty. I had major surgery, they said they rebuilt me, made me stronger, faster, more annoying. They said I was annoying?? How RUDE!!!! While I was recovering, I went to a craft open day earlier this year and I've been doing lots of exercise and getting fit and strong for my trip into outer space. The Library started something NEW. Storytime. I really like Storytime.

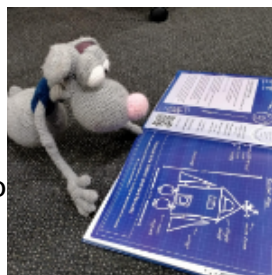


Storytime is so much FUN. I've made lots of new friends. We sit and listen to stories. Sometimes they have these really cool sound effects and they even do funny voices.

We've even made crowns for the King's Birthday and there were stickers, lots and lots of stickers to put on the crowns. My favourite thing about Storytime is chasing the kids around the Library after we finish the stories. Then we play hide and seek. I'm really good at hiding, I can make myself really small and quiet. The kids can make themselves small but they can't make themselves quiet. They're so easy. I just follow the sound of giggles. There's lots of giggles.

I'm really looking forward to my SPACE ADVENTURE. I tried making another Spaceship, I found a really good design in a book at the library. My Spaceship was coming together very nicely, until I asked for some gas cylinders to use as rockets and some matches to light them. The next morning my Spaceship had disappeared along with my design. They said it was abducted by ALIENS.

That's OK because I have my GREAT SPACE RACE COMPETITION. I'm really excited to see what kind of Spaceships get made and I'm even more excited to fly them. I'm going to have the BESTEST time.



Did I say I chase the kids around the Library? I meant to say that I take them around the Library and quietly show them how to find the books they want. Yes, that's what I do.

Storytime



When: 10.00 - 10.30 am Monday

Where: The Library

Who: Under 5's

We're doing something new at the library. Every Monday we'll be holding a Storytime session for the under 5s. So come along and listen to some of our awesome stories and bring along a little friend for Ratty to play with.



Ratty Presents



The Great Space Race Competition

Ratty wants to go to Space and have lots of ADVENTURES. He's tried building his own SPACESHIP, but it keeps BLOWING UP and CRASHING!

Ratty needs your HELP!!!!

Build him a SPACESHIP, you can use whatever materials you want. Paper Mache, wood, wire, paper, recycled tins and bottles, whatever you can think of. Make sure you check with the Grown ups first.

Ratty will take all the spaceships made for Test Flights and pick the best one to go off on his GREAT, BIG ADVENTURE!! He might go on lots of little adventures and take a different SPACESHIP every time. You never know what he might bring back from his TRAVELS.

Competition Closes: Friday, 19th July

Winners Announced: Friday, 26th July

Drop your Entries off at the Library

Age Groups: Under 5s

5 yrs - 6 yrs old

7 yrs - 10 yrs old

11 yrs and up



Target Shooting Southland is back for the winter months. Small bore rifle shooting is great fun.

Tuatapere meet on Wednesday nights

7:30pm

RSA Hall

Contact:

Kevin Daly (03) 234 5162 or

Quinton Erskine (03) 226 6969



SALVATION ARMY FAMILY STORE TRUCK

The Salvation Army Family Store Truck will come out and collect large amounts of your pre-loved furniture & other household items. This service is free.

Please call the store to organise your visit on 03 214 5380



**Family
Store**

Donate. Buy. Help.



familystore.org.nz

TUATAPERE CEMETERY TRUST

We would like to thank Kevin Sutherland for supplying the gravel, Lance Harris for spreading it behind our new ashes plot, and the kind person who mowed the roadside. As we have lost John Knowler, a very valued member, we would like to welcome a new member.

Sec Elaine Brown

President Maurice Green

CANCER SOCIETY

Well, August is just around the corner once again. We will be having a fun jingo night at Tui Base Camp. Raffles etc. If you can help or donate goods, that would be awesome. Date will be in next month. Fresh daffidols and street stall as usual. Please support as this affects so many families and all money raised stays in Otago/Southland.

Thanks

Isobel Green 03 2266065

Tuatapere's own Crafters Collective

COUNTRY CORNER CRAFTS

**SUMMER HOURS 10 - 4PM
OPEN MOST DAYS**

- Knitwear & sewing
- Jewellery & Bobbin lace
- Woodware
- Jams, pickles, sauces
- Art works & much more
- Looking for a Tuatapere souvenir? "On Natures Edge" always in stock

ENQUIRIES

LOUISE GREBER (03) 668 6001
MAX MALSEN (021)422 800
LYLA SHERRIFF (03) 226 6187

New members always welcome.
Want to volunteer? Let us know!



KEEN TO GIVE SQUASH A GO?

Enquires please contact:

Rebecca Robertson 027 424 6129



SOUTHLAND COMMUNITY LAW CENTRE

Free legal information and advice for the community of Southland. 2nd Floor, Cue Building, 33 Don Street, Invercargill. Phone (03) 214 3180

Freephone: 0800 550 800
(outside Invercargill city only)



TUATAPERE COMMUNITY MARKET

Second Saturday of the month.

11am - 2pm

Last Light Lodge - 2 Clifden Highway,
Tuatapere

Text 0274599654 to book a \$5
table

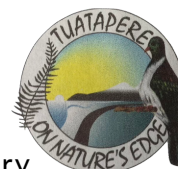
MONOWAI - 100 YEAR CENTENARY

In May 2025 Monowai will celebrate their 100 year centenary along with the power station. I am looking to find people who have had an association with the village in their younger years and am particularly interested in old photos and stories.

Contact Merrill at merrill.laurence@gmail.com
or call (03) 225 8267

TUATAPERE ENVELOPES

Envelopes printed with the "Tuatapere on Natures Edge" Logo can be purchased at Country Corner Craft Shop 1A Orawia Road. Cost \$4.00 per 10



COMMUNITY NOTICEBOARD

TUATAPERE COMMUNITY SUPPORT WORKER

A free and confidential service.
Contact Keri if you:

- Want help with filling forms
- Need advice on who to contact
- Require financial or food assistance
- Know someone that requires assistance or are concerned about someone's well being
- Want to suggest a community related course or activity

Hours: Mon, Wed, Thu 10am - 3pm

Cellphone: 027 757 5983

E-mail: tcworker@xtra.co.nz

Call in to the office at the Medical Centre just inside front door 69a Orawia Road, Tuatapere

SEWING & PATCHWORK GROUP

Come and learn to sew or share your skills
OR
Just get on with your project
Bring your lunch and sewing machine

The Den

Erskine Street, Tuatapere

Cost \$10/day. 10am-3pm
Coffee and Tea provided.
Contact: Helen Todd
022 103 9327

Dates:

July 4th & 18.
Aug 8th & 22nd.
Sept 5th & 19th.
Oct 3rd & 17th.
Nov 7th & 21st.



WAIAU MEMORIAL LIBRARY

Library Hours: Fridays

10:00am - 11:30am

2:30pm - 4:00pm

7:00pm - 8:00pm



For Landscaping, Land Maintenance, Gravel Supply & Cartage

GRADES OF
CRUSHED & SCREENED GRAVELS,
ROOTRAKING, FARM TRACKS,
DAIRYLANES



ELEVATOR SCRAPER,
BOBCAT & ATTACHMENTS,
LANDSCAPING,
TRENCHING AUGERS

Supplies of Gravel Ex Waiau River

River Run Screened Grades
Concrete Gravel Pea Gravel
Rejects for soak holes Crushed - AP30 & AP65
Pebbles for Sheep and Cattle yards & calf sheds
Fines suitable for cow lane capping

K J SUTHERLAND
GRAVELLING &
AGRICULTURAL CONTRACTOR

2475 OHAI-CLIFDEN H/WAY
ORAWIA RD2 OTAUTAU 9682

Ph 0274 367 934



MILNES

TRANSPORT

Local & Nationwide livestock cartage
Call Mike ☎ 0279602788

- Fertiliser spreading
 - Bulk Cartage
- Spreading, Spraying, Slurry and muck application with our JCB
 - Blower truck
 - Gravel

Call Tegan ☎ 0275644313



027 252 7933

- ✓ Renovations
- ✓ Extensions
- ✓ New Builds
- ✓ Sheds/Farm buildings
- ✓ Decks
- ✓ Pre-purchase house
- Inspections

*Call us for any building requirements
Ph 027 252 7933 email: aaroncbltd@gmail.com*

FORDE WINDERS SHEARING LTD

Available for all new and existing clients

For all your shearing and
crutching requirements

Please phone

Darin Forde 027 229 7760

Jeremy Winders 027 231 4299

McMAHON 
design studio
Experts in Design & Print Solutions

Our Services

- **GRAPHIC DESIGN SERVICES**
INCLUDING: LOGO DESIGN & BRANDING PACKAGES, PHOTO EDITING
ADVERTISING DESIGN FOR PRINT OR DIGITAL & EMAIL SIGNATURES
- **OFFICE & WORKSHOP STATIONERY**
INCLUDING: CUSTOM PRESENTATION/DISPLAY ITEMS & BRANDED GIFTWARE
- **WEDDING & EVENT STATIONERY & SIGNAGE**
- **PERSONAL STATIONERY, GIFT ITEMS & PACKAGING**
- **CERTIFICATES - PADS - CALENDARS - BOOKLETS**
NEWSLETTERS - STICKERS - LABELS - VINYL DECALS

Contact us to book your design consult today.

We'd love to learn about your project & help your vision come to life.

We are conveniently located at

9 Cumnack Street, Wallacetown

P: 027 242 8109 E: mcmahondesign@outlook.com

OPENING HOURS:

Mon & Fri: 9.30am - 2.30pm Tues - Thurs: 9.30am - 4.00pm

Tui Base Camp



**Open
from
8:00am
every day!**



Kitchen open until at least 7.30pm

**COME IN &
CHECK OUT OUR SPECIALS**

Pre-order your morning tea and lunches by
calling **(03) 226 6250** and we can have it
ready for you to pick up when it suits you.

Don't forget we have a mini-van!
Contact us to organise a night out at
Tui Base Camp (pick-up and drop-off).
Enquires to James 027 837 3521

**For all of your dine in and takeaway
requirements including:**

In-house roasted Amore Coffee
In-house made pies, sausage rolls,
cheese rolls
Range of breakfast options
Packed lunches
Catering

Phone: (03) 226 6250

www.tuibasecamp.co.nz



**Keep an eye on our
Facebook Page
for our latest updates!**



WAI AU HEALTH TRUST

69a Orawia Road, Tuatapere. Ph: (03) 226 6123

Monday to Friday 8:30am - 4:30pm Approved Registered ACC Provider

Tuatapere Medical Centre Management and our staff continually strive to offer you the best possible healthcare experience.

Nationwide, particularly in rural areas there is an extreme shortage of medical practitioners-I am sure this is not coming as a surprise to you. We have spent a significant amount of time investigating options for our community, we have decided to follow the path of offering virtual telehealth services in our practice. Our virtual health consultations have been very successful to date, we have been fortunate to be able to secure the same GP on all but one occasion. We are very happy with the skills and expertise of Dr Reagan Fernandes; he is very pleasant, the patients who have received his care have given positive feedback. We have purchased some new very innovative equipment to make these consults more interactive and informative for the GP as well as the patient. Please call me to discuss or reach out with any questions you may have. Our administration team will book you with the appropriate person when call to make your appointment.

NP Amanda McCracken is having a well-deserved holiday for July, whilst we do have practitioner cover during this period there are less appointment times available. Please ensure you book your routine appointments well in advance to avoid missing out on her preferred day/time.

Repeat Prescription Requests:

Our same day request is \$30.00 per request. Therefore, it is in your best interests to phone a week ahead to give our Practitioner time to review your file and allow adequate time to arrange an appointment if necessary.

Covid Vaccines - 2024

We are pleased to be able to offer our patients covid vaccines at Tuatapere Medical Centre - please phone to make your appointment.

Most medical centres are not offering this service- due to extra workload and administration tasks required to be approved vaccinating practices.

Flu Vaccines 2024:

Flu Vaccines continue to be available at the practice. Please phone to book your appointment or book through your Manage my Health App.

After Hours Care:

Tuatapere Medical Centre continue to offer an after-hours service. If you are unwell and require medical care or advice outside of our normal business hours, call 032266123 - you will automatically be connected to our afterhours triage service, Ka Ora. Ka

Ora's qualified professionals will discuss your concerns and advise you of the process to be followed. If deemed that you need urgent care they will contact our practitioner, or should our team be unavailable, you will be connected to one of their available medical practitioners. Our team do their best to offer you the best service we possibly can with the limited staff we have available.

Please Note

Please respect our staff's personal time and do not contact them on their personal phones or via other means. It puts them in a difficult position when they have to decline your requests for medical assistance when they are not on duty. I appreciate your understanding.

As always, please get in touch with me if you have any questions or concerns.



Jo Sanford (Manager)
Cell: 027 295 0429

BARRETT *Ag* LTD

FULL SILAGE AND BALEAGE SERVICE



ALL CULTIVATION
INCLUDING DIRECT DRILL
AND STRIP TILLING - PRECISION PLANTING



EXCAVATION
20 TONNE DIGGER/ GRADER
D85 BULLDOZER/ ROLLER
TIP TRUCKS AND TRAILERS



Barrett Ag Ltd
Ph: Kahu- 027 5183 448
E: barrettagltd@gmail.com
FB: Barrett Ag





These are challenging times, Southland Murihiku.

Southland District Council is consulting on its Long Term Plan 2024-2034, and we would like to hear from you.

There are four key issues, around funding of water services, roads, recycling and Te Anau Airport Manapouri.



How much do you think we should spend?

Are you prepared to sacrifice some levels of service in roading to keep rates down?

These vital decisions will have a bearing on your final rates.

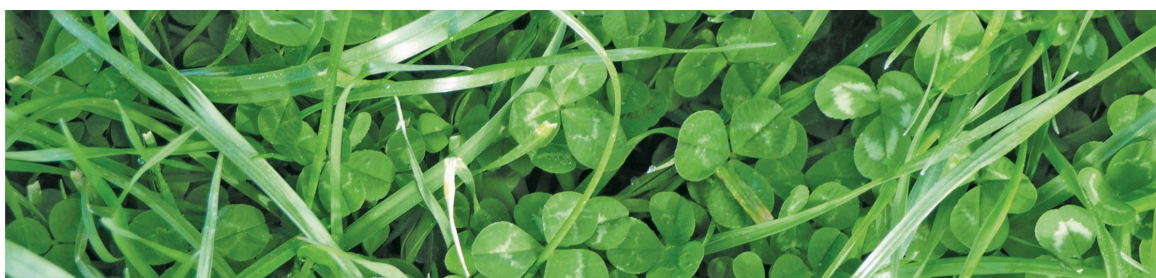
The average Southland district rate increase for 2024/2025 in the proposed LTP is 13.66%, with most increases across the district ranging from 4% to 13% for residential rates, and from 11% to 17% for rural and business rates. There will be exceptions for individual properties.

**Make it stick
SOUTHLAND**

The consultation period runs from 5 June until 5 July, with hearings scheduled on 16-18 July.

Please go to www.makeitstick.nz/ltp2024 and let us know what you think.

Hard copies of the consultation document and submission form are available at Southland District Council's office/libraries in Invercargill, Winton, Riverton, Te Anau, Lumsden, Otautau, Oban, and Wyndham, as well as more than 20 cafes, dairies, supermarkets, retail outlets, pubs, clubs or service centres in townships throughout the district.



Tim and Superior go the extra mile

Are you frustrated with the lack of service from your local fertiliser consultant, peddling the same advice year after year regardless of your production outcomes, environment and sustainability?

Give **Tim Adcock** of Superior Fertiliser Specialists a call. He will bring a whole new meaning to service and client/advisor relationships.

Tim is a key member of the highly skilled Superior team totally committed to helping you develop healthier, more productive soils and plants.

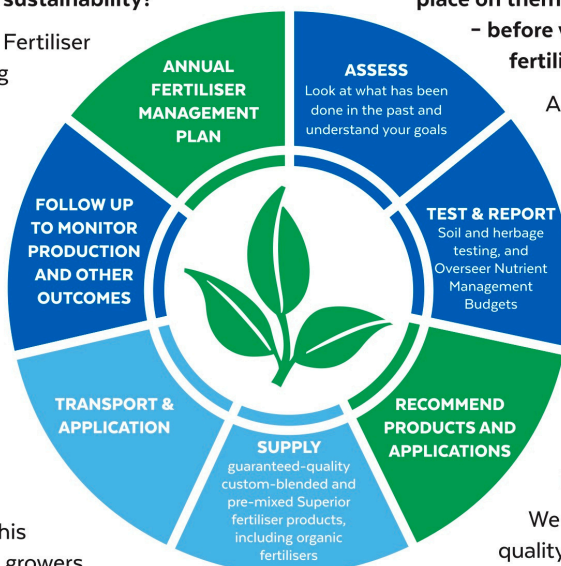
We form a specialist fertiliser company that provides high quality advice and products at competitive prices. We have been doing this for South Island farmers and growers for just on 20 years.

Superior promotes a total soil care package. First, we get to understand the make-up, nutrient status and health of your soils, the demands you are going to place on them, and your production goals

– before we apply one kilogram of fertiliser.

A comprehensive regime of vigorous soil tests will be undertaken and the results will provide the basis of a Superior Fertiliser Management Plan customised for your unique situation. This will complement your farm's Environmental Plan and provide the blueprint for an ongoing annual fertiliser programme.

We then supply guaranteed-quality solid fertiliser for your pasture and crops, monitor production and other outcomes, and update your Plans as required.



It's free to talk so don't hesitate to give Tim a call.
Phone 021 418 224



Tim Adcock
Fertiliser Advisor
Otago/Southland
021 418 224
tim@superior.net.nz

 FERTILISER SPECIALISTS
SUPERIOR
www.superior.net.nz



SILAGE • BALAGE • CULTIVATION • EXCAVATION • SLURRY • SPRAYING • CARTAGE



AGRICULTURAL CONTRACTING SPECIALISTS
WESTERN SOUTHLAND

03 2258488 | admin@rabco.nz



BAUHAUS



ARCHITECTURAL DESIGN SERVICES

- SITE FEASIBILITY STUDIES
- CONCEPT DESIGNS
- FULL WORKING DRAWINGS
- RENOVATIONS AND EXTENSIONS
- SUBDIVISIONS
- BUILDING CONSENTS
- RESOURCE CONSENTS

0204 1288 082 // WWW.BAUHAUSNZ.COM // HELLO@BAUHAUSNZ.COM

Your Community = Your Archive



Central
& Western
Archive

Central & Western Archive - Murihiku Southland update

Kia ora community. We want to thank you all for your support of our Book Sale Galore we held over 7/8 June. We have now got enough money in the kitty to pay for the next 4 months of power, until the next round of funding opens, where we will apply for another grant. We took in around \$1,500 from the fundraising. So we are very thankful to you, our community, for the massive support and for not just buying the books, but for the generous donations.

We also wish to thank the Tūātapere District Lions Charitable Trust and the Clifden Rural Women, as well as Waiau Memorial Library for their support and donated items for our fundraising efforts. Plus all of you who donated both items to sell and very generously to the Community Archive. The addition of craft items to the sale was a big hit as well as the community cafe, where past friends could gather to catch up for a cheap bite & cuppa and browse books.

At the Book Sale Galore, we also had a prize winning draw for the Firewood raffle that was kindly donated by L&D or Lindsay & Dixon, this prize went to one of our huge supporters and a stalwart of local history, David Dudfield of Invercargill, who has family out this way.

Lastly but not least, a huge kia ora to Kimba Malloves for coming over and serenading us with your guitar on the Saturday afternoon, it was really appreciated by all those attending the sale.

We have been asked by many of you if this could become a yearly event, which is great. We will check with Tūātapere Lions and get back to you, as we cant do it without their support. So watch this space for future updates on that.

FLAX WEAVING CLASSES

Hello lovely community,

We have exciting news for the upcoming month of August! The flax weaving term is starting soon. Are you eager to engage in some nature crafts and learn the sacred weaving techniques passed down from our ancestors? This weaving class is a wonderful opportunity to connect with others while improving your fine motor skills and hand-eye coordination.

Class Details: The class will take place at the Tuatapere medical Centre. on every Thursday of August at 7pm to 9pm

Projects: All projects are beginner-friendly! We start with simple weaving projects that are not too complex but still provide quick, visible results.

- Instructions: Easy-to-understand
- Age Range: Suitable for ages 18 to 100
- Materials: All materials are provided for you.

Registration:

- How to Register: Please register on The Weaving website.
- Spaces: We have limited spaces available, so make sure to register for the classes you want to join.
- Class Packages: You can book the class as a single session or as a 5-pack.
- Cost: Each class costs \$10.
- Duration: Each session lasts for 2 hours, with an optional additional half-hour for those who have questions or need to finish their project.

We are looking forward to seeing you at one of the weaving sessions! Please don't miss out on this opportunity to learn a new skill and meet new people.

Class Topics:

1st of August First Session: Eating Bowl

8th of August Second Session: Placemats

15th of August Third Session: Bracelets and Serviette Holders

22nd of August Fourth Session: Bag

29th of August Fifth Session: Basket

Register now to secure your spot!

Website:

<https://www.earthlivingmastery.com/flaxweaving-tuatapere> or use the QR code



WAIATU VALLEY SHEARING LTD



Simon de Vries

Julie Heaps

027 840 9867

03 226 6212

EGERTON CONTRACTING

for all your cartage needs!

Bulk Tip Unit

Tractor available with soft hands for loading of Baleage etc

ALSO Supply available of

Wood Chips / Sawdust

Beach but-end firewood loads

PH: EAMON 027 371 8674

SOUTHLIFE
Community CHURCH

Steve & Sharon
are Pastors
and we are an area church

We believe in Community and endeavour to show this the best we can by the way we care and serve!

MISSIONS
"BRIDGE CHRISTIAN MINISTRIES UGANDA"

We warmly invite you to come along to one of our services.
It would be great to see you

Sunday Service
10am Truro St, Orepuki

Steve & Sharon Calder
027 321-1108

Alex Reid CONTRACTING

Paddock Cultivation from
Ploughing to Sowing
Dry Hire available
Aerating
Direct Drilling
Ridging
Mulching



Dairy Lane Maintenance

Tip Trailers • Vibrating Roller • 2 Tip Trucks

Sheep Conveyor

Drenching, Vaccination etc • 3 way draft

Large Skid Steer for calf shed cleaning, loading Muck Spreaders etc

4 Muck Spreaders • 16,000 litre Slurry Tanker
Pond Stirrer • Umbilical Slurry System



PHONE ALEX
0212775308 CELL
03 2255377 HOME

CLIFDEN RURAL WOMEN NZ

Just a brief account on what our members have been doing recently. We are fortunate to have members from Nightcaps, Otautau, Tuatapere, and Orawia areas so that we can serve and connect with a wide area of Western Southland.

We have enjoyed being involved in catering for Open Farm Day Papatotara, Waiau Collie Club Trials and the local Central Western Arcives book sale, as well as delivering food to families that have been affected by medical events and accidents. Muffins were dispatched to the residents from Blue Cliffs when they were evacuated from their homes.

We did another cooking/sewing workshop for Growing Future Farmers at Wairaki Station. This was very successful, very hands on with 8 cadets showing importance with starting a day with a good, hearty breakfast and using meats provided to the shepherds on their station and seasonal vegies for quick easy meals such as stir fries, lasagnes, mince dishes, baked potatoes and ways to use left overs for quick lunches.

Many of our recipes came from our recipe book that we had printed and sold for funds. Cadets were shown how to sew buttons, mend garments and were presented with a sewing kit so they can put their new skills into practice.

Our members attended the opening of Tuatapere Ambulance Station as we had given a generous donation for internal fittings. A fantastic learning day as we all had chances to have a go at CPR and watch some great demonstrations from 1 st responders - ambulance and the local Fire brigade members.

Protecting our environment is one of the categories Rural Women support so our Branch has donated a AT200 trap for the Tuatapere Domain which we receive regular updates of the catches - opossums etc.

Our Branch is thrilled to sponsor 3 Hauroko Valley school children that have qualified in the Agir Kids Nationals in Hamilton.

Presently we are visiting our new Mums in the area -presenting them with baking and a knitted garment along with info on local playcentres, toy library etc.

Clifden RW members enjoy many outings and opportunities, recently enjoying a few days in Cromwell at the Triple F. A social occasion connecting with other RW members, visiting Carrick Winery, Highland Park where we enjoyed being taxied around the circuit at 180km in a porche.

Rural Women celebrate 100 years next year (formerly WDFF) with a garden party at Andersons Park.

So, we have many events to look forward to.

Clifden RW Branch will celebrate 95 years next year.

We are very grateful to the funding from our RW Forest planted in 1949 that enables Southland Branches to donate funds in their community under the criteria of RWNZ - education, health , environmental, social needs and family well- being.

Clifden Branch meets bi-monthly either in Tuatapere or at the Otautau Connect Café and we welcome new members. It is a fantastic way to connect with others.

We have chances to attend some fantastic events, hear from some amazing guest speakers.

Yearly subscriptions are only \$50 which is so affordable.

If interested in becoming a new member, we look forward to hearing from you.

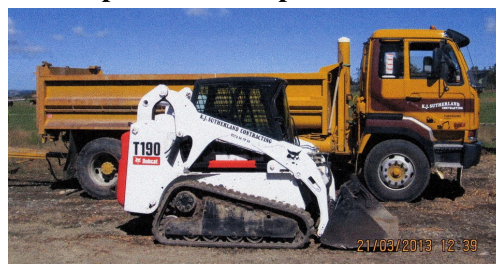
President -Lynley Whyte

K.J. Sutherland Contracting Bobcat T190

With attachments: Landscape Rake,
Augers and Trencher

Suitable for all landscaping, shed and yard
maintenance

Muck-spreader and tip trailer available



PHONE KEVIN
027 367 934 / (03) 225 5716

NEED A JP?

The following Justices are
available by appointment:



Tuatapere: Keri Potter 027526 3137

Te Waewae Bay: Shirley Whyte
027 504 5220

Blackmount: Nicky Baker
0276435880

WESTERN ELECTRICAL

2008 LTD

Electrical Solutions

Domestic | Industrial | Commercial

Quality Service at Competitive Prices

- New Builds, Rewiring & Alterations
- Dairy Shed, Farm & Industrial Maintenance
- Hotwater Element Replacement
- A/H Call Out Service Provided



Ph 03 225 8974 / 027 439 3787
Fax 03 225 8973

THIRSTY LIQUOR MID-WINTER CHRISTMAS DEALS

First in service
First in value



\$31.99
EACH

Smirnoff Ice Double
(inc zero) 250ml 7%
12pk cans



\$29.99
EACH

Cruiser 12pk
Long White 10pk
bottle ranges



\$16.99
EACH

Brookvale Union
330ml 6pk range
Long White Hazy
320ml 6pk cans



\$24.99
EACH

Major Major
330ml 10pk can range



\$31.99
EACH

JB & Cola; CC
330ml 4.8% 10pk bottles



\$39.99
EACH

Barrel 51
Tui Bourbon
7% 250ml 18 pk cans



\$43.99
EACH

Woodstock
7% 250ml 18pk cans
4.8% 330ml 18pk bottles



\$47.99
EACH

Jim Beam
Canadian Club
(incl Zero) 18pk
4.8% 330ml cans



\$26.99
EACH

Cody's
7% 250ml 12pk
cans



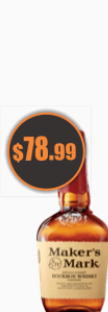
\$47.99
EACH

Jack Daniel's Original,
Jagermeister Original;
all 700mls Southern Comfort 1L



\$89.99
EACH

JB 1.75ltr



\$78.99
EACH

Maker's Mark 1L



\$67.99
EACH

Jameson 1L



\$49.99
EACH

Gordon's
Smirnoff 1Ltrs
Gordon's Pink;
Orange; Lemon 700mls



\$52.99
EACH

Jim Beam
Canadian Club
(incl spiced)
Bati Dark/Spiced 1Ltrs



\$52.99
EACH

Larios 12: Rose
Chatelle 1Ltrs



\$53.99
EACH

Johnnie Walker
Red 1L



\$60.99
EACH

Appleton
Estate 1L



\$15.99
EACH

Wither Hills
incl Early Light range
(ex Reds)



\$29.99
EACH

Heineken
12pk 330ml bottles



\$24.99
EACH

Speights
Summit Ultra
12pk bottles & cans



\$42.99
EACH

Export Gold;
Export 33; Tiger ULC
DB Draught 24pk bottles



\$29.99
EACH

Speights 15pk bottles



\$31.99
EACH

Steinlager Classic
15pk bottles



Promotion period between 1/7/2024 to 31/7/2024. While stocks last. Promotion only available at participating stores. Please contact your local store to confirm whether they are participating in the promotion and check the pricing in-store prior to purchase. Online pricing will vary.

100% **NEW ZEALAND** OWNED AND OPERATED
thirstyliquor.co.nz

FOLLOW US ON SOCIAL MEDIA



ASK ABOUT
LOYALTY CARD
BENEFITS &
GIFT VOUCHERS



CLUB MANAGER JOB VACANCY

Waiau Town and Country Club, King Street,
Tuatapere, Southland

About Us

As a member of the Clubs Association, the Waiau Town and Country Club was established in 1985. Located in the small but vibrant Tuatapere township, the WTCC has a strong and supportive membership base and operates a friendly and welcoming Bar & off licence seven days a week and Bistro hours Thursday - Sunday. The wide-open grassed area at the rear of the club is available for NZMCA members and is most popular, especially during the summer months, which adds to the variety of clientele the WTCC serves.

Qualifications & Experience

Must hold a current Bar Managers Licence.

Good communication skills.

Knowledge of Gaming procedures is preferred but not essential, as training will be provided. Experience with paying wages, balancing tills and preparing banking. Excel spreadsheet knowledge is a must.

Ability to effectively manage staff and staff rosters.

Tasks & Responsibilities

Day-to-day running of the country club bar, off-licence management of staff and staff rosters. Responsible for Club Licence requirements and renewals. Stock control and pricing. Wages, Balancing of tills, gaming and general banking requirements. Manage/organise Event Bookings and actively advertise via social media, community magazine and website.

Benefits

Flexible work hours can be negotiated. Tuatapere is the gateway to Fiordland and is located 9 kilometres from the southern coastline of

the South Island of New Zealand, which faces towards Antarctica. It is midway between Invercargill and Te Anau on the Southern Scenic Route.




Queenstown is only a two and half hour drive away! Whether you're into hunting, fishing, surfing, the snow - it's ALL within reach which makes

Tuatapere the perfect place to base yourself for work and recreation!

Supportive committee members and club members.

Apply To:

- 41 King Street, Tuatapere 9620 New Zealand.
- waiautcc@gmail.com
- +64 3-226 6489



COME HELP US CELEBRATE THE BEST
LITTLE 9 HOLE COURSE IN SOUTHLAND

CENTENARY CELEBRATIONS

WAITANGI WEEKEND
7TH & 8TH FEBRUARY 2025

FOR DETAILS OR TO REGISTER, EMAIL TUATAPEREGC@GMAIL.COM

Deb's Sewing & Repair Service

mending to making
and everything in between

Got a tricky job? Just ask!

Call or text

021 030 5667



GOOD - CHEAP - FAST but you can only pick two

Tuatapere Freight

LOCALLY OWNED & OPERATED

RUNS MONDAY TO FRIDAY
WEEKENDS BY ARRANGEMENT

Phone Brandon

027 436 4360



**here's to
ahundy**

CELEBRATE WITH US
ALL WEEK LONG!!

Mon 1st - Sun 7th July

Spend \$50 instore & you could win
1 Nights Accommodation & Breakfast for
2 people at

LANGLANDS INVERCARGILL

(excludes alcohol & tobacco sales)

THURSDAY 4TH July

ENTERTAINMENT 1-7PM

FREE SAUSAGE SIZZLE 5-7PM

Guess the Four Square Baby Competition:

WIN: Tui Locals'Hamper

SPOT PRIZES - MERCH PACKS - SALES

