



# WESTERN Wanderer

Tūātapere | Clifden | Orawia | Blackmount | Monowai | Colac Bay | Orepuki

Cover Photo: Tuatapere Fire Brigade, Ambulance Open Day, Credit: Mike Goodwin

Issue 268

## JUNE 2024

MONDAY	TUESDAY	WEDNESDAY	THURSDAY	FRIDAY	SATURDAY	SUNDAY
					1	2
3  Kings Birthday Weekend 3rd June	4 Community Board Meeting at 3.30pm. T&C Club	5 Wool & Craft 10-3pm The Den  Target Shooting RSA Hall 7.30pm	6 Sewing & Patchwork Grp 10-3pm The Den	7  HAYDRIVE Book Sale Pipe Band Hall 10-2pm	8 Book Sale Pipe Band Hall 10-2pm	9 Hoe Down 12pm-8pm T&C Club
10 Story Time Waiau Memorial Library 10am	11	12 Target Shooting RSA Hall 7.30pm	13	14	15 Tuatapere Community Market Last Light Lodge 11-2pm	16
17 Story Time Waiau Memorial Library 10am Tuatapere Predator Control Meeting 7pm at The Den	18	19 Promotions Group Meeting 7pm T&C Club Wool & Craft 10-3pm The Den Target Shooting RSA Hall 7.30pm	20 Deadline Content for Western Wanderer	21	22	23
24 Story Time Waiau Memorial Library 10am	25	26 Target Shooting RSA Hall 7.30pm	27	28  Matariki 28th June	29  Wreath Making 4.30pm-6.30pm	30
	Coming up ...	School term ends Friday 5 July. Restarts Monday 22 July	Library Spaceship comp closes 19th July			

Special thanks to

## HANDY PHONE NUMBERS

### EMERGENCY

**POLICE /FIRE/AMBULANCE: 111**

**MEDICAL CENTRE:** (03) 2266 123

**TUATAPERE POLICE STATION:**  
(03) 2269 020

**TUATAPERE COMMUNITY WORKER:**  
027 757 5983

**HAUROKO VALLEY SCHOOL OFFICE:**  
(03) 2266 753

**WAIAMU AREA SCHOOL OFFICE:**  
(03) 2266 285

**TUATAPERE CEMETERY TRUST:**  
(03) 2266 065

**TUATAPERE SERVICE STATION:**  
(03) 2266 475

**TUATAPERE FOUR SQUARE:**  
(03) 2266 898

**TUI BASE CAMP CAFE-BAR-RESTAURANT**  
(03) 2266 250

**HUNGRY HIPPO SHOP & TAKEAWAYS**  
(03) 2266 417

**WAIAMU TOWN & COUNTRY CLUB**  
(03) 2266 489

## The Community Events Sign Needs You!

We're searching for someone to take charge of posting events and notices on our signboard.

Don't worry if you're new to this – we provide training, and it's incredibly straightforward!

Changing the sign typically only takes 10-20 minutes, and you might find yourself doing it a few times a week.

Please contact Paula on  
027 434 6777.



# TUATAPERE AMBULANCE *Open Day*

By: Mike Goodwin

On Sunday, May 12th, 2024, the heart of Tuatapere was bustling with activity as the community gathered at the Medical Centre on 69a Orawia Road for the Tuatapere Ambulance Open Day. Jointly hosted by the Tuatapere Lions Club and Hato Hone St John, this event was a vibrant showcase of local emergency response capabilities and community spirit.

From 11 AM to 2 PM, residents of all ages explored the inner workings of the Ambulance Station and the advanced First Response Unit. The open day provided an invaluable opportunity for the community to engage directly with the lifesaving services on their doorstep and understand the crucial role of quick medical response, especially given our remote location from Southland Hospital.

The highlight for many was the '3 Steps for Life' training sessions. A certified educator guided participants through the crucial steps of CPR and the effective use of Automated External Defibrillators (AEDs). With several AEDs available within the community, the practical demonstrations emphasised how these skills could be the difference between life and death.

Children enjoyed interactive presentations and received giveaways from St John in Schools, making the event both educational and enjoyable for our younger residents. The involvement of the Tuatapere Volunteer Fire Brigade further underscored the collaborative approach our emergency services take to community safety.







Photos from the day captured smiling families learning together, volunteers sharing their expertise, and community members of all ages participating in hands-on demonstrations. These images are more than just snapshots; they are a testament to Tuatapere's commitment to fostering a safe and resilient community. We extend our heartfelt thanks to the major sponsors—Meridian, Tuatapere Amenities Trust, Southland Community Trust, Rural Woman, and the Tuatapere Lions Club. Their continued support ensures that our ambulance service remains a cornerstone of health and safety in the area.

As the aroma of the Lions Club's complimentary sausage sizzle wafted through the venue, the feeling of community connection was unmistakable. This event was more than just a learning opportunity; it was a true celebration of Tuatapere's solidarity and communal spirit.

Thank you to all who attended and participated. Your engagement helps strengthen our collective ability to respond to emergencies and ensures that every household has the knowledge and skills to act confidently in critical moments. Together, we are building a safer Tuatapere.

If you're passionate about helping others and ready for a career that makes a real difference, consider becoming a paramedic. Every day, you'll have the opportunity to save lives and provide essential care in critical moments. It's more than a job—it's a calling to protect and serve your community in their most vulnerable times. We also need volunteers who can bring their time and dedication to this vital work. Your courage and skills can be the difference between life and death. Answer the call to help those around you; become a paramedic or volunteer and be a local hero.

## Hens for Sale \$13 each

18 month old Brown Shavers

Ex-commercial layers from Te Waewae Eggs  
True Southland Free-range

The next lot of chickens available will be available at the beginning of June, and every two months after that.

**Ph Rob 03 226 6805 or 022 044 2086**



## TUATAPERE HANDYMAN SERVICES

Barry Bennett  
(03) 226 6730

- Painting - Interior/Exterior
- Waterblasting
- Spider & Fly Spraying
- General Repair Work
- Lawnmowing
- Weed Spraying



## WANTED TO BUY

Possum Fur, Hard deer,  
Antler, Deer Velvet.

Phone Leith  
027 496 3721

## Want to know more about the Hump Ridge Great Walk?

For information or to book/walk the Tuatapere Hump Ridge Track – please contact the Track Operations Office directly via [www.humpridgetrack.co.nz](http://www.humpridgetrack.co.nz)

**Project Webpage:** Stay informed with the facts and news via [www.doc.govt.nz/hump-ridge-great-walk-project](http://www.doc.govt.nz/hump-ridge-great-walk-project)

**Project Email:** Get in touch to ask questions or to be added to the newsletter distribution list via email: [HumpRidgeGWP@doc.govt.nz](mailto:HumpRidgeGWP@doc.govt.nz)

**Media Enquiries:** please direct to [media@doc.govt.nz](mailto:media@doc.govt.nz)



**Neat Cut**

Phone: Anita Green 027 506 2418  
Tuesday 9-5pm, Thursday 10-8pm, Friday 10-5pm - Appointments are encouraged.



**TUATAPERE TE WAE WAE**  
*Community Board*

**Anne Horrell, Chairperson** Contact: 021 2169 808  
Email: altonlea.horrells@xtra.co.nz

I hope all the mothers in our district were deservedly well looked after on Mother's Day!

## WELL DONE & THANK YOU

To those who attended and/or contributed to the ANZAC ceremonies at Orawia, Orepuki and Tuatapere. All three were special occasions of remembrance. It was great to see the large numbers at each location. Well done to all, especially the Orepuki folk who persevered despite the horizontal rain and wind!

To those who make the Community Market happen now every second Saturday of the month at Last Light Lodge.

The Tuatapere Lions' Club and Hato Hone St John for organising the 'Ambulance Open Day' on 12 th May. This was well attended and included the presence of the Tuatapere Fire Brigade. You are all greatly appreciated!

It's great to see the reading to pre-schoolers session happening on a Monday morning at the Tuatapere Library, with the chance for the Under 5s to enjoy listening to books (and to connect with Ratty, the Library Rat).

Waiau Area School students, staff and all those who helped make the Southern Area Schools' Tournament a great success. Seeing the extra numbers of young people in the town enjoying a few days of sport and camaraderie with our local students was so good. The town was buzzing!

The Pink Ribbon Breakfast was a lot of fun; including a delicious breakfast, great raffle prizes and auctions at Tui Base Café. Thank you to the amazing organising team for your efforts for such a worthwhile cause.

**MOUNTAINS EDGE CABINS MONOWAI**



Hunting, Fishing, Mountain Biking, Kayaking & Tramping Cabin Accommodation

**12 Cabins**  
Double and Single Available  
\$35.00 per person per night

Eftpos available  
Full Kitchen Facilities, Showers, Toilets, Playground & the Tennis Courts right across the road!  
We are 'pet friendly'

[www.mountainedgescabins.com](http://www.mountainedgescabins.com)  
Email: [mountainedgescabins@gmail.com](mailto:mountainedgescabins@gmail.com)  
75 Turbine Drive, Monowai. Ph. 03 225 8267



**MR STEEL**  
TUATAPERE  
PH: 027 276 6816  
MALCOLM

**For all your engineering, steel fabrication and repair needs!**

**PLATE METER SERVICES**  
TROUGH CLEANING SERVICES

PASTURE METER READING THAT'S QUICKER AND EASIER, WITH AT THE GATE REPORTS

- Specialist in quality pasture meter reading with advanced sensor technology
- Provide 200 measurements per second or 18,500 readings over a single 500m pass
- Provides a fully integrated electronic support system
- Provides a secure web-based storage of information with easy access
- Prompt generated feed wedges for rapid decision making and seasonal comparisons
- Generate reports at the gate, supplying valuable pasture cover data and comparable results every time
- Improve heath & increase animal hydration
- Enhance production & improve water quality
- Reduce bacterial/algae contamination of trough water

**CLEAN TROUGH WATER MEANS IMPROVED LIVESTOCK HEALTH**

Now 2 bikes available for pasture metering



Brett George • P 027 351 3408  
E [platemeterservices@gmail.com](mailto:platemeterservices@gmail.com)



# COMMUNITY BOARD

## NEWS

- Safety rails have been installed at the Tuatapere Library entrance.
- Footpath repair and maintenance work has taken place.
- The Rowallan Bridge at Bluecliffs has been replaced.
- The entrance to the Domain on the corner of Elder Drive and Half Mile Road has been excavated, tidied and grass seed applied.
- The sloping walkway which leads from the Waiau Bridge to Bridge Street has been excavated, applied with gravel and compounded to help smoother mobility.
- A barrier- on the corner of the bridge near DT King's yard has been installed (as a safety measure) and painted- thank you to the PD team.
- To help mitigate the problem of flooding on Main Street, outside Tui Base, some drain cleaning with a water blaster and cutting back of foliage has taken place.
- It's good to see the clearing of willows and other vegetation by Environment Southland on the banks of the Waiau River near the bridge to help water flow.
- At a recent Community Board workshop, the Board discussed projects planned for the next three years. We will communicate with you going forward.
- The next formal meeting of the Tuatapere Te Waewae Community Board will be held on 4th June at 3.30 pm. All welcome!

**TODD & CO**  
REALTY

*Melanie* - your local salesperson

I am proud to be serving my local area, helping people from all walks of life meet their property goals.

After some great sales so far this year, I have a number of buyers still looking.

If you would consider selling, give me a call!

**Mel Muldrew**

021 068 5262

melanie.m@toddco.nz

**TODDCO.NZ**

William Todd & Co Ltd, Licensed (REAA 2008)



**Choose Local. Choose Melanie.**  
**Serving Southland since 1865.**

# WaterForce

**Irrigation Systems**  
**Pumping & Filtration**  
**Effluent Dispersal**  
**Water Management**

20 Winton Hedgehope Highway, Winton

03 236 9805 [www.waterforce.co.nz](http://www.waterforce.co.nz)

**0800 4 FORCE (4 36723)**



C: 0274 247 102

T: 03 225 8652

E: [admin@drakeplumbing.co.nz](mailto:admin@drakeplumbing.co.nz)

**KIERAN DRAKE**  
Certifying Plumber  
& Drainlayer

# COMPLETELY *Compost*

Did you know that up to 40% of the waste that ends up in landfill could instead be composted?

Imagine if everyone in Southland District put out their red bins 40% of the time, how much could that save ratepayers? Not to mention all the great compost that would be available to grow fresh, local food.

We are seeing around the country Councils beginning to run kerbside organic waste collections - this could be an expensive proposition for our very spread-out communities in Southland - let's get cracking now and show that we can use our 'waste' as a valuable local resource instead!



We at Completely Compost are keen to get everyone composting their organic waste, especially food scraps. We have funding from WasteNet Southland (from the Waste Levy, not from rates!) to support more people to compost at home - we can provide cheap pest-proof compost bins (NZ-made, 100% recycled plastic) as well as a supply of high-carbon material such as sawdust or woodchips, which is essential for making simple, successful high-quality compost.

The clever blokes at Riverton MenzShed have made us some really smart-looking larger-scale pest-proof compost bins, which we are setting up at 'compost hubs' throughout Western Southland to take food scraps from people who are unable to compost at home (like some renters and people with mobility challenges). We will run workshops to ensure that people are happy and confident about composting. We will also be training up some local 'champions' who can be available to provide local support to people where needed.

Some people think home composting can be tricky - smelly or attracting pests - but with a few straightforward tips most people will find it is actually very easy to make a good product that can be used to grow healthy food for themselves or their community.

If you are keen to get involved with this, get in touch - whether you want to get your hands on a cheap compost bin, are interested in attending a workshop, want a bigger bin set up at your local school, marae or community garden or if you want to be one of our champions - we want to hear from you!

Nick Kiddey

Completely Compost!

A project of the South Coast Environment Society 6 Website: [www.sces.org.nz/completely-compost](http://www.sces.org.nz/completely-compost)

Phone: 03 234 8717

Email: [completelycompost@gmail.com](mailto:completelycompost@gmail.com)





**Agricultural Contractors servicing Western Southland and beyond.**

**BALAGE - SILAGE - GROUNDWORK - FEED TRADING**  
**Nigel 021 226 6156 / [fowlecontracting@gmail.com](mailto:fowlecontracting@gmail.com)**






\* 13 Tonne Digger \* 5.5 Tonne Digger \* 2.7 Tonne Digger- dry hire or operated  
 \* Tip Truck \* Bob Cat \* Augers \* Post Driver \* Tree Saw & Hedge Trimmer

\* Tree Trimming \* Post Driving \* Fencing \* Cleaning of Wintering Sheds \* Site Clearance \* Cartage \* Gravelling \* Lane Maintenance \* General Earthworks

For all enquiries and bookings please contact Lance or Alice Harris  
 Lance: 027 304 3714  
 Alice: 027 270 0363  
 Email: lanceharris533@gmail.com  
 Check us out on facebook- Harry's Machines

# Shearing

*magazine*  
**Des Williams (editor)**

Tel 07 839 2891 : Mob 0274 833 465  
 Email : shearingmag@xtra.co.nz  
*Member NZ Guild of Agricultural Journalists and Communicators (Inc)*

**LAST SIDE PUBLISHING LTD**  
 PO Box 102, Hamilton 3240, New Zealand

## ASSISTANT COOK/CHEF EMPLOYMENT POSITION AVAILABLE

**Job Description:**

\* Assistant Cook:

**Job Requirements:**

- \* Permanent part time (Thursday, Friday, Saturday, Sunday and possible extra for functions)
- \* To be able to do every aspect of the work in the Kitchen including Cooking, Cleaning, Till and Eftpos, Stock, Health and Safety.
- \* Willing to learn, on going training, Food Safety course.
- \* Team player, mature and reliable.
- \* Be able to run the Bistro efficiently if Head Cook need time off.

**Apply To:**

- \* Waiau Town & Country Club via email Located in Tuatapere Southland
- \* [waiautcc@gmail.com](mailto:waiautcc@gmail.com)
- \* In Subject please put Assistant Cook/Chef

## Tūatapere Reserve Pest Control Group (CT)

We held a public meeting in April at the old Scout Den, where we discussed our plans and methods. Many thanks to those who attended.

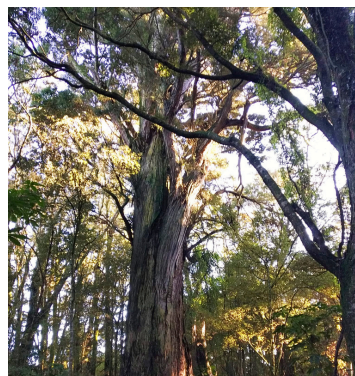
We have finally sited all 4 of our new Automatic Traps and they have had a few results, mainly mice which are turning up everywhere.

We have set a line dedicated to target mice, with baited mousetraps in banks of 4 (wooden mouse motels) kindly constructed by David Todd photos below.

I believe we've had a positive effect on the possum population within block 1 of the Domain Reserve but must remain vigilant as there appear to be regular invaders from outside.

Our next public meeting will be held on Monday June 17th at 7pm at The Den, Erskine Street park.

Many thanks to our team and supporters. Anyone wishing to become a member please ph. Tony: 027242 0392.





## TUATAPERE PLAYGROUP

Tuatapere Playgroup welcomes all 0-5 year olds & their parents or caregivers to come join the fun!



You'll find us at **23B Orawia Road, Tuatapere**

**Friday mornings from 9am to 12pm.**

Bring a packed morning tea and drink bottle.

We provide a warm, friendly atmosphere for children to form bonds and learn alongside each other and a place for parents to connect.

For more info message our Facebook page or contact Gemma on **022 040 3368**

## CLIFDEN PLAYGROUP

45 Otahu Eastern Bush Road.



Join our FB Group to check if it's on:  
**Wednesday (during School Term)**  
**9:30am - 12:30pm.**

All mothers and children welcome.  
Bring packed lunchbox for your child's morning tea.

Contact: Sarah 027 699 5234

## TUATAPERE TOY LIBRARY

Tuatapere Toy Library has been a toy swap/hire service provided to the young families of Tuatapere and surrounding districts since 1989.

The purpose is to create opportunities for the little people of our community to have accessibility to toys.

A small contribution of an annual membership allows families to join the group and have access to the toys.

For more information or questions please text or ring **Nathalie Pahl** on **027 4759 075**



## TUATAPERE AMBULANCE

### Did YOU Know?

The Tuatapere Ambulance is a funded service by the Tuatapere Lions Club, for the residents of Tuatapere & Districts.

Should you receive an account for this service from St John, please forward it immediately to:

**The Treasurer**  
**Tuatapere Lions Club**  
**PO Box 47**  
**Tuatapere**



Sometimes we experience difficulty in receiving the invoices for YOUR trip - so **PLEASE** do forward them on to us.  
Thank you!

**Tuatapere Lions Club Charitable Trust**  
**Ambulance Committee**

## WESTERN SOUTHLAND HEALTH SHUTTLE

The Western Southland Health Shuttle Service travels from Otautau, Ohai, Nightcaps, Tuatapere, Riverton - covering all of Western Southland. We also connect with the Invercargill-Dunedin shuttle.

The Western Southland Health Shuttle operates Monday - Friday (excluding Public Holidays).

Bookings are required by 3pm the day prior to transport.

**Ph: 0800 103 046 to book.**

Please book as soon as you receive your appointment.

## TUATAPERE VOLUNTEER FIRE BRIGADE

We're on the lookout for members to join this rewarding organization. We are looking for persons who are, ideally, available throughout the day.

If you think that you would like to try this (sometimes lifelong) commitment, then please feel free to come and try it!

We train on Tuesday nights at 7:30pm during daylight saving and 7pm through the winter months.

We look forward to meeting with you.





**BEN MCMASTER  
BUILDING**

Ph: 027 202 7955  
benmcmaster@live.com

- Licensed Building Practitioner
- Sheds, renovations & new homes
- Based in Western Southland


*You dream it, we'll build it*

**Specialising in**  
Dairy Conversions  
Rural Fencing  
Post & Rail

**H Gill Fencing,**  
Eastern Bush  
Phone 021 225 5489  
After Hours 03 225 5488  
Email hamish@hgillfencing.co.nz







**Central &  
Western  
Archive**

**Open for district research on:**  
every Tues/Thurs, 10.30-4.30  
each 1<sup>st</sup> & 3<sup>rd</sup> Friday, 1.30-4.30  
and 1<sup>st</sup> Sat of month, 1.30-4.30

**FREE: wi-fi, public computers, with couch,  
table/chairs, hot drinks & lunchroom etc.**

email: [CentralAndWesternArchive@gmail.com](mailto:CentralAndWesternArchive@gmail.com)  
Next to the Railway Station, Main Rd Tūātapere





**SLWP**  
Southern Land & Water Planning

We specialise in:

- Resource consents**
- Farm environmental plans**
- Policy advice**
- DOC concessions**
- Landscape plans & assessment**

We take care of the paperwork,  
so you can do what you do best!

Sonya: 027 5050 077  
Rebecca: 027 4246 129  
[www.slwp.co.nz](http://www.slwp.co.nz)  
Locally owned & operated



**KIA ORA, NI HAO, KAMUSTA**  
Western Wanderer Readers

Our school Anzac service was held in our first week back. We remembered the fallen and honoured those who returned. The Year 7&8's led our remembrance service with pride. A candle was lit to remember Ann, as she was an incredibly valuable support in learning about Anzac and a special friend to HVP. Thanks to Gray for supporting us by playing bugle. We appreciate those who were able to attend, including representatives from the Tuatapere RSA.



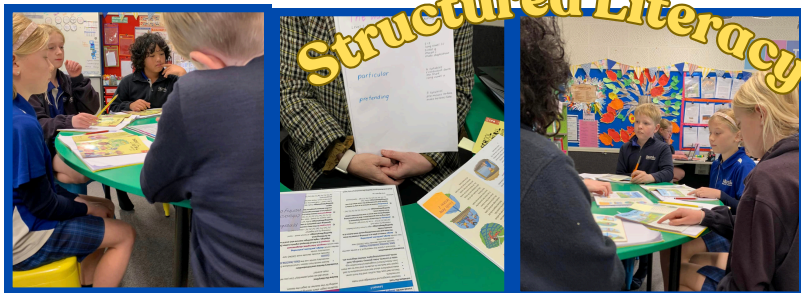
HVP's Annual Camo Day was held with students dressing from head to toe in hunting gear. The calls rang out across the playground throughout the day before the competition. There were 4 categories with each learner having an opportunity to call from the makeshift mai mai. This event is a highlight and we thank the Bennett whānau for organising this. Our Guest Judge Andrew was tasked with selecting the best duck callers, who were rewarded with a prize to support opening weekend. Overall Champion = Sam!





# HAUROKO HAPPENINGS

Hauroko Valley Primary School is proud to be a leader in Western Southland School's, as we started our Structured Literacy journey early last year. We are excited to have joined forces with Otautau Primary, Takitimu Primary, and Waiau Area School to further extend our Professional Learning opportunities in the iDeal Approach. This provides a sound foundation for our learners in spelling concepts. We are seeing evidence of students understanding and knowledge in their spelling and writing. We continue our journey with a reading focus.



Cross Country training is one of our daily fitness activities for each class, as we prepare our children for long-distance running. Our students are focused on their goals to support achievements. This year we host Thornbury Primary School and Waiau Area School. We look forward to reconnecting with our Western Cluster School friends and families.

## CROSS COUNTRY

It has been exciting to see Hauroko Valley Primary School's hockey turf being utilised by our hockey teams. This year we have 3 teams heading to the Invercargill Competition weekly. Our Year 3&4 team are our beginners with several newbies joining Coach Rebecca. Our more experienced Year 5&6 team are being coached by Coach Nic. Meanwhile, our Year 7&8 team are working with Coach Kate G. We welcome other students including a few from Thornbury Primary and Waiau Area School.

## HOCKEY

It has been a pleasure to have supported Waiau Area School for their Area School Tournament. We hosted several hockey games on the turf and our students were able to see this in action. You really can't beat the opportunities to work together with others, when these moments present. Stay warm Western Wanderer Readers. We look forward to catching up next time. Mā te wā.

## BOUNDARY CREEK

### HOURS:

Closed Sunday & Monday

Tues-Fri 9am - 3pm

Sat 9am - 4pm

3a Orawia Road

Tūātapere

Email: [wendy@boundarycreek.co.nz](mailto:wendy@boundarycreek.co.nz)

Hope to see you soon

For all your Accounting and Tax Solutions

Ask for Janice or Trevor England

 03 2266110

Aparima Accounting Ltd

57 Main Road Tuatapere

## CANTERBURY CARS

### 4WD Specialists

For all your vehicle requirements

Cars, utes, 4WDs, vans

Finance available

Contact: Murray Dowling

027 556 2655

Visit our website

[www.canterburycars4x4.co.nz](http://www.canterburycars4x4.co.nz)



**88.2 FM**

Hits of the 80's, 90's & Today

## POP UP SHOP

Quality second-hand goods  
affordable prices

OPEN FRIDAYS AND SATURDAYS  
10am to 4pm



Tuatapere Presbyterian Church Hall, Main Road,  
Tuatapere.

Enjoy a cuppa and a chat while there.

### WANTED

HOUSEHOLD ITEMS, CLOTHING, SHOES, BOOKS,  
LINEN, TOYS, AND MORE.

Your donations of any of these items are always  
appreciated. These can be dropped off under the  
front verandah at the church or for other options  
contact me.

CHECK OUT MY WEEKLY FACEBOOK POST FOR  
A SELECTION OF THE ITEMS AVAILABLE.

Carol Diack 021 110 1835.

Thank you for helping us to help the community.

## WESTERN SOUTHLAND WOOL AND CRAFT GROUP

Spinning, Felt, Weaving, Knitting, Crochet.

Other crafts welcome!

1st & 3rd Wednesday of the month.

10am-3pm. \$8.

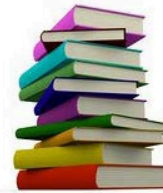
BYO Lunch.

Scout Den, Erskine Street.



For details please contact:  
Helen Todd 022 103 9327

Remember the old Lion's Booksales at Tūātapere?



Lion's is kindly supporting us to hold one this year:

**Central & Western Archives**

## BOOK SALE GALORE

**7<sup>th</sup>/8<sup>th</sup> June, 10am-2pm**

(Hay Day & Market Day Weekend)

**Pipe Band Hall, 50 Main Rd, next door  
to Community Archive Heritage Hub**

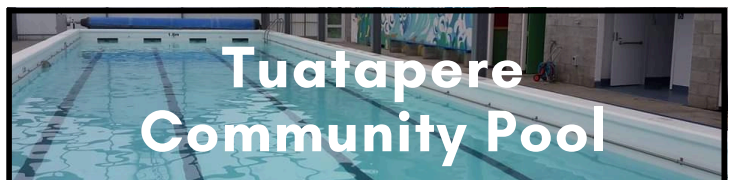
Please drop your donations of books, puzzles,  
board games, console games, CD's, DVD's, or  
Art in covered porch area BEHIND 'Gallery65'  
at 65 Main Road, if no-one is available there.

PLEASE don't bring items to Archives Hub we have pest free premises!

**\*text or ph: 027-2114675 for pickups if reqd\***

Your Community = Your Archive

Preserving our Local History



## Tuatapere Community Pool



Like us on Facebook

**Tuatapere Community Pool**

to keep up-to-date or  
message the page for assistance

Season Passes Available

President: Minessa **027 311 2112**

## Tuatapere & DISTRICTS LIONS CLUB PROJECT



### SUPER DIRT

Bags@\$8.00 ready for your garden  
Super Dirt can be collected from  
Rabco's Yard, Groveburn Road

Phone Shirley or Stephen  
(03) 226 6817






Room in smoke free home in Tuatapere  
\$150.00 power and food extra  
Inquires phone/txt 0273736871

**Waiau Valley Presbyterian Church Tuatapere**  
Main Road  
We meet every **Sunday at 10.30am**  
Need to know more?  
Phone or message  
**Cedric on 022 027 3834**

**WESTERN SOUTHLAND CATHOLIC MASS**  
Held Fridays at 1pm  
in the Anglican Church  
cnr Orawia Rd & Birch St Tuatapere.  
We are a friendly, lively group of people and everyone is very welcome to join us especially those who are visiting the area. Grateful thanks also to the Tuatapere Anglican Community for sharing their church facilities with us.  
Fr Gerard Aynsley (Parish Priest )  
Ph: **03 218 4123**  
basilica.invercargill@gmail.com  
Fr Gerard  
**Text preferred - 021 580 610**

**CHRISTIAN LIVING BIBLE STUDY**  
7pm Tuesday Nights  
The Den  
Erskine Street,  
Tuatapere  
Contact **Helen 022 103 9327**



**Loretta's Lawn Mowing Services**  
Available to mow lawns whenever needed  
Please contact Loretta  
**027 462 9527**



**TUATAPERE HEALTH & GIFT SHOP**  
(part of Riverton Pharmacy - beside Medical Centre)  
**69a Orawia Road Ph: (03) 226 6999**  
**12:00pm - 5:30pm Mon-Fri**  
Good selection of Vitamins, Giftware & Over-the-counter healthcare  
First prescription drop-off from 1:30pm  
Second prescription drop-off 4:30pm

**COMMUNITY OUTLOOK ARTICLES**  
The Community Outlook articles are always available on the On Natures Edge website!  
<https://www.onnaturesedge.co.nz/>

**SENIOR CITIZENS GROUP**  
Senior Citizens is a group of over 50s that meet every **Friday afternoon at 1pm** at the rooms behind the RSA Hall. We are always looking for new members so if you would like a fun afternoon playing bowls, cards or just catching up with friends, come and join the group.  
**If you need a ride - we can pick you up!**  
**Please contact:**  
Olive Bennett (03) 2266 477 or  
Alison Bennett 027 224 2724

**ESSENTIAL OILS 100% PURE GIFTS OF NATURE**  
Florals Trees Plants Herbs Spices Citrus  
To learn more, phone or text your local Wellness Advocate  
Carol Erskine Papatotara 0274 599 654



Get your car washed, dried and windows cleaned. Price arranged on request!  
Contact: Rex Hibbs Flat 1/26 Orawia Rd, Tuatapere

**The Small Job Man**  
Tuatapere Area

- Butcher-Boner
- Lawn Mowing
- Weeding
- Trimming
- Water Blasting
- Chainsaw work
- Wood splitting
- Small Building work
- Fence Painting

Senior Rates  
Phone **John 022 164 8061**

PLEASE HAVE YOUR ARTICLES, NOTICES, OR UPDATED ADVERTS FOR THE WESTERN WANDERER SENT IN BY  
**20th of June (for July Issue) yourwesternwanderer@gmail.com**

# TUATAPERE SERVICE STATION

20 ORAWIA ROAD  
PHONE: 03 2266475

## HARDWARE IN STOCK

METRIC BOLTS & NUTS  
IMPERIAL BOLTS & NUTS  
GUTTER BOLTS  
DYNA BOLTS  
COACH BOLTS  
TEK SCREWS  
WOOD SCREWS  
SELF TAPPING SCREWS  
HINGES, BRACKETS,  
CATCHES

## HYDRAULIC FITTINGS

WE NOW STOCK A GOOD RANGE  
OF CRIMP ON HYDRAULIC  
FITTINGS FOR AGRICULTURE  
HOSES WE CAN ALSO REPAIR OR  
MAKE UP NEW HOSES

## MECHANICAL REPAIRS FOR YOUR

Car, 4WD, Trailer, Caravan & Motor

bike WOF's

Servicing all vehicles

Light Engineering

New Tyres

Electrical Work

Scanning of most vehicles



## OPENING HOURS

Monday – Friday  
8.00am to 5.00pm



# LOCAL AGRIKIDS FUND RAISING TO COMPETE IN THE NATIONALS!



Three exceptional young locals, Oliver Chamberlain, Tomas Clarke and Sam Horrell have yet again proven their skills by qualifying for the FMG Young Farmer of the Year Agrikids National Final. The event is scheduled to take place in Hamilton on 11-13th July, and the boys will be proudly representing Otago/Southland.

Seven Regional Finals run across the country between February and April 2024. Competing in teams of three, contestants will be challenged to a series of modules based on the food and fibre sector. The top three teams from each Regional Final move through to the Grand Final to battle it out for the title of AgriKidsNZ Champions.

Sam, Oliver and Tomas have previously participated in the competition in 2023 and placed third at Finals. However, this year's performance has earned them the top spot in the qualifiers. The boys eagerly look forward to the opportunity to compete for the National title once again.

These hardworking kids are now raising funds for travel expenses to represent Southland/Otago with lotto ball fundraisers, selling hotdogs at lunchtime at Hauroko Valley Primary School, and picking up baleage wrap on a local farm. The upcoming School Cross-Country catering will go towards their efforts, as will Pine Cone Bags, which will be up for sale shortly. Please keep an eye out on the Hauroko Valley Primary School Facebook page for your opportunity to support our local kids.

15

## WAI AU MEMORIAL Library

### COMPETITION

Ratty wants to go into Space, do some exploring and make new friends. He's tried building his own Spaceship, but it keeps BLOWING UP and CRASHING. Ratty thought it would be a GREAT idea for someone to build him a SPACESHIP. Ratty will pick the BEST spaceship and fly off for lots of ADVENTURES. You never know, he might bring back some new friends for a visit.



All you need to do is BUILD Ratty an AWESOME SPACESHIP. You can build one out of cardboard, paper mache, wood, whatever you can think of. If you have any questions, you can ask us at the Library or contact us on our Facebook page.

Age groups:

under 5 years old

5 years - 6 years old

7 years - 10 years old

11 years - 15 years old



Competition closes: Friday, 19th July

Winners Announced: Friday, 26th July



### Storytime



When: 10.00 - 10.30 am Monday

Where: The Library

Who: Under 5's

We're doing something new at the library. Every Monday we'll be holding a Storytime session for the under 5s. So come along and listen to some of our awesome stories and bring along a little friend for Ratty to play with.

### OTAUTAU MUSEUM AND HERITAGE TRUST ANNUAL BOOK SALE

Old Sunday School Hall 10th/11th August  
10am to 4pm, 15th - 10am to 4pm, 17th -  
10am - 4pm, Thursday 22nd - 10am-4pm  
Saturday 24th - 10am-4pm.

## SALVATION ARMY FAMILY STORE TRUCK

The Salvation Army Family Store Truck will come out and collect large amounts of your pre-loved furniture & other household items. This service is free.

Please call the store to organise your visit on **03 214 5380**



**Family  
Store**

Donate. Buy. Help.

[familystore.org.nz](http://familystore.org.nz)



## COMMUNITY NOTICEBOARD



**SOUTHLAND**

Target Shooting Southland is back for the winter months.

Small bore rifle shooting is great fun.

Tuatapere meet on Wednesday nights

7:30pm

RSA Hall

Contact: Kevin Daly (03) 234 5162 or  
Quinton Erskine (03) 226 6969

Tuatapere's own Crafters Collective

## COUNTRY CORNER CRAFTS

**SUMMER HOURS 10 - 4PM  
OPEN MOST DAYS**

- Knitwear & sewing
- Jewellery & Bobbin lace
- Woodware
- Jams, pickles, sauces
- Art works & much more
- Looking for a Tuatapere souvenir? "On Natures Edge" always in stock

**ENQUIRIES**

**LOUISE GREBER (03) 668 6001**  
**MAX MALSEN (021) 422 800**  
**LYLA SHERRIFF (03) 226 6187**

**New members always welcome.  
Want to volunteer? Let us know!**



## KEEN TO GIVE SQUASH A GO?

Enquires please contact:

Rebecca Robertson 027 424 6129



## TUATAPERE COMMUNITY MARKET

Second Saturday of the month.

11am - 2pm

Last Light Lodge - 2 Clifden Highway,  
Tuatapere

Text 0274599654 to book a \$5  
table

## SOUTHLAND COMMUNITY LAW CENTRE

Free legal information and advice for the community of Southland. 2nd Floor, Cue Building, 33 Don Street, Invercargill. Phone (03) 214 3180

Freephone: 0800 550 800  
(outside Invercargill city only)



## MONOWAI - 100 YEAR CENTENARY

In May 2025 Monowai will celebrate their 100 year centenary along with the power station I am looking to find people who have had an association with the village in their younger years and am particularly interested in old photos and stories.

Contact Merrill at [merrill.laurence@gmail.com](mailto:merrill.laurence@gmail.com)  
or call (03) 225 8267

## TUATAPERE ENVELOPES

Envelopes printed with the  
"Tuatapere on Natures Edge"  
Logo can be purchased at Country  
Corner Craft Shop 1A Orawia Road.  
Cost \$4.00 per 10





## COMMUNITY NOTICEBOARD

### TUATAPERE COMMUNITY SUPPORT WORKER

A free and confidential service.

Contact Keri if you:

- Want help with filling forms
- Need advice on who to contact
- Require financial or food assistance
- Know someone that requires assistance or are concerned about someone's well being
- Want to suggest a community related course or activity

Hours: Mon, Wed, Thu 10am - 3pm

Cellphone: 027 757 5983

E-mail: [tcworker@xtra.co.nz](mailto:tcworker@xtra.co.nz)

Call in to the office at the Medical Centre just inside front door 69a Orawia Road, Tuatapere

### SEWING & PATCHWORK GROUP

Come and learn to sew or share your skills  
OR

Just get on with your project  
Bring your lunch and sewing machine

#### The Den

Erskine Street, Tuatapere

Cost \$10/day. 10am-3pm

Coffee and Tea provided.

Contact: Helen Todd

022 103 9327

#### Dates:

May 2nd & 16th.

June 6th & 20th.

July 4th & 18.

Aug 8th & 22nd.

Sept 5th & 19th.

Oct 3rd & 17th.

Nov 7th & 21st.



### WAIAU MEMORIAL LIBRARY

Library Hours: Fridays

10:00am - 11:30am

2:30pm - 4:00pm

7:00pm - 8:00pm



## For Landscaping, Land Maintenance, Gravel Supply & Cartage

**GRADES OF  
CRUSHED & SCREENED GRAVELS,  
ROOTRAKING, FARM TRACKS,  
DAIRYLANES**



**ELEVATOR SCRAPER,  
BOBCAT & ATTACHMENTS,  
LANDSCAPING,  
TRENCHING AUGERS**

### Supplies of Gravel Ex Waiau River

River Run Screened Grades

Concrete Gravel Pea Gravel

Rejects for soak holes Crushed - AP30 & AP65

Pebbles for Sheep and Cattle yards & calf sheds

Fines suitable for cow lane capping

**K J SUTHERLAND  
GRAVELLING &  
AGRICULTURAL CONTRACTOR**

**2475 OHAI-CLIFDEN H/WAY  
ORAWIA RD2 OTAUTAU 9682**

**Ph 0274 367 934**



**027 252 7933**

- ✓ Renovations
- ✓ Extensions
- ✓ New Builds
- ✓ Sheds/Farm buildings
- ✓ Decks
- ✓ Pre-purchase house Inspections

*Call us for any building requirements*  
Ph 027 252 7933 email: aaroncbld@gmail.com

## FORDE WINDERS SHEARING LTD

Available for all new and existing clients

For all your shearing and  
crutching requirements

Please phone

Darin Forde 027 229 7760

Jeremy Winders 027 231 4299

**McMAHON**    
**design studio**  
*Experts in Design & Print Solutions*

### Our Services

#### ■ GRAPHIC DESIGN SERVICES

INCLUDING: LOGO DESIGN & BRANDING PACKAGES, PHOTO EDITING  
ADVERTISING DESIGN FOR PRINT OR DIGITAL & EMAIL SIGNATURES

#### ■ OFFICE & WORKSHOP STATIONERY

INCLUDING: CUSTOM PRESENTATION/DISPLAY ITEMS & BRANDED GIFTWARE

#### ■ WEDDING & EVENT STATIONERY & SIGNAGE

#### ■ PERSONAL STATIONERY, GIFT ITEMS & PACKAGING

#### ■ CERTIFICATES - PADS - CALENDARS - BOOKLETS NEWSLETTERS - STICKERS - LABELS - VINYL DECALS

Contact us to book your design consult today.

*We'd love to learn about your project & help your vision come to life.*

*We are conveniently located at*

**9 Cumnock Street, Wallacetown**

**P: 027 242 8109 E: mcmahondesign@outlook.com**

**OPENING HOURS:**

**Mon & Fri: 9.30am - 2.30pm Tues - Thurs: 9.30am - 4.00pm**



**WAIU AREA SCHOOL**

Year 1-13 Education

*Live to LEARN, LEARN to Live*

**Kia ora Western Wanderer Readers!**



This year's Southern Area Schools Tournament was proudly hosted by Waiau Area School from May 15-17.

Each of the six schools in the Southern Region (Twizel, Maniototo, Roxburgh, Lawrence, The Catlins, Waiau) take it in turns to host the annual SAS tournament, celebrating whanaungatanga, forging new and galvanising existing relationships amongst ākonga and providing a platform for a Southern Team to be selected to compete in the National Area Schools Tournament in the upcoming July school holidays.

This year's event was a huge success thanks to the generous participation and support of a wide range of individuals and local groups and your efforts are truly appreciated.







From the WAS field & gym to the Waiau squash club to the Pukemaori gun club to HVP's hockey turf to the RSA hall to Tui Base Camp to the golf course to the Waiau T&C club to the top rugby field; the variety of venues and activities available was incredible and a massive thank you goes out to all volunteers, billet hosts, coordinators, coaches, caterers, drivers, photographers, organisers, officiators, scorers, competitors and supporters.

Finally, congratulations to the six WAS students selected to compete at the Nationals in Te Awamutu in July

Oli Abbott  
Kenzie Martin  
Korbyn Palmer  
Meadow Rodgers  
Emily Templeton  
Summer Templeton



# Tui Base Camp



Open  
from  
**8:00am**  
**every day!**



*Kitchen open until at least 7.30pm*

**COME IN &  
CHECK OUT OUR SPECIALS**

Pre-order your morning tea and lunches by calling **(03) 226 6250** and we can have it ready for you to pick up when it suits you.

Don't forget we have a mini-van!  
Contact us to organise a night out at Tui Base Camp (pick-up and drop-off).  
Enquires to James 027 837 3521

**For all of your dine in and takeaway requirements including:**

In-house roasted Amore Coffee  
In-house made pies, sausage rolls, cheese rolls  
Range of breakfast options  
Packed lunches  
Catering

**Phone: (03) 226 6250**

[www.tuibasecamp.co.nz](http://www.tuibasecamp.co.nz)



Tui Base Camp



**Keep an eye on our  
Facebook Page  
for our latest updates!**





SILAGE • BALAGE • CULTIVATION • EXCAVATION • SLURRY • SPRAYING • CARTAGE



AGRICULTURAL CONTRACTING SPECIALISTS  
WESTERN SOUTHLAND

03 2258488 | admin@rabco.nz





# WAI AU HEALTH TRUST

69a Orawia Road, Tuatapere. Ph: (03) 226 6123

Monday to Friday 8:30am - 4:30pm Approved Registered ACC Provider

Tuatapere Medical Centre Management and our staff continually strive to offer you the best possible healthcare experience. Nationwide, particularly in rural areas, there is an extreme shortage of medical practitioners - I am sure this is not surprising to you. We have spent a significant amount of time investigating options for our community and have decided to offer virtual telehealth services in our practice. Our virtual health consultations have been very successful to date. In its early stages, the consultation will be done with the patient and a nurse assisting. We have purchased new, innovative equipment to make these consults more interactive and informative for the GP and the patient. Please call me to discuss this or reach out with any questions. Our administration team will book you with the appropriate person when you call to make your appointment.

## **Covid Vaccines - 2024**

We are pleased to be able to offer our patients COVID-19 vaccines at Tuatapere Medical Centre - please phone to make your appointment- most medical centres are not offering this service due to the extra workload and administration tasks required to be approved for vaccinating practices.

## **Flu Vaccines 2024**

Flu Vaccines continue to be available at the practice. Please phone to book your appointment or book through your Manage my Health App.

## **Cervical Screening / HPV Self Swab**

HPV screening became the new method for cervical screening in Aotearoa New Zealand. HPV testing is a better first screening test. It looks for the human papillomavirus (HPV), which causes cell changes that may lead to cervical cancer. This gives you options for how you have your screening sample taken:

A vaginal swab - you can either self-test, or a health professional can help. A cervical sample (previously known as a smear test) - taken by a health professional. We can help you find out which type of test is better for you. The vaginal swab is quick and easy to do.

But this may not be suitable for everyone. It may be recommended that some people have a cervical cell sample taken (previously known as a smear test), depending on their screening history. Some people may also prefer to have their sample taken as a cervical sample. A cervical sample also tests for HPV. If you do a vaginal swab test and HPV is found, you will either be recommended to return to have a cervical sample taken as a follow-up test or referred directly to colposcopy. This will depend on the type of HPV detected. Please phone if you wish to discuss this further with a nurse.

## **After Hours Care**

Tuatapere Medical Centre continue to offer an after-hours service. If you are unwell and require medical care or advice outside our normal business hours, call 032266123. You will automatically be connected to our after-hours triage service, Ka Ora. Ka Ora's qualified professionals will discuss your concerns and advise you on the process to follow. If deemed that you need urgent care, they will contact our practitioner, or should our team be unavailable, you will be connected to one of their available medical practitioners. Our team do their best to offer you the best service we possibly can with the limited staff we have available.

## **Please Note**

Please respect our staff's personal time and do not contact them on their personal phones or via other means. It puts them in a difficult position when they have to decline your requests for medical assistance when they are not on duty. I appreciate your understanding.

As always, please get in touch with me if you have any questions or concerns.



**Jo Sanford (Manager)**  
Cell: 027 295 0429

# BARRETT *Ag* LTD

FULL SILAGE AND BALEAGE SERVICE



**ALL CULTIVATION**  
INCLUDING DIRECT DRILL  
AND STRIP TILLING - PRECISION PLANTING



**EXCAVATION**  
20 TONNE DIGGER/ GRADER  
D85 BULLDOZER/ ROLLER  
TIP TRUCKS AND TRAILERS



Barrett Ag Ltd  
Ph: Kahu- 027 5183 448  
E: [barrettagltd@gmail.com](mailto:barrettagltd@gmail.com)  
FB: Barrett Ag





# JOB VACANCY

## Club Manager

Waiau Town and Country Club

Contract/Temp: \$27 – \$30 per hour

## Qualifications & Experience

- Must hold a current Bar Managers Licence.
- Good communication skills.
- Knowledge of Gaming procedures preferred but not essential as training will be provided.
- Experience with paying wages, balancing tills and preparing banking. Excel spreadsheet knowledge is a must.
- Ability to effectively manage staff and staff rosters.

## Tasks & Responsibilities

- Day to day running of the country club bar, off-licence and management of staff and staff rosters.
- Responsible for Club Licence requirements and renewals
- Stock control and pricing.
- Wages, Balancing of tills, gaming and general banking requirements.
- Manage/organise event bookings and actively advertise via social media, community magazines, and websites.

## Benefits

- Flexible work hours can be negotiated.
- Tuatapere is the gateway to Fiordland and is located 9 kilometres from the southern coastline of the South Island of New Zealand, which faces towards Antarctica. It is midway between Invercargill and Te Anau on the Southern Scenic Route.
- Queenstown is only a two and half hour drive away!
- Whether you're into hunting, fishing, surfing, the snow - it's ALL within reach which makes Tuatapere the perfect place to base yourself for work and recreation!
- Supportive committee members and club members.

Please apply via email to:

- [waiautcc@gmail.com](mailto:waiautcc@gmail.com)
- In the Subject area please type "Club Manager Position"



Matariki is a star cluster that appears in the early morning sky in New Zealand during the mid-winter months.

The star cluster is well known throughout the world and at different times of the year can be seen around the globe. It is one of the brightest clusters in the sky, containing hundreds of member stars.

Matariki is known as the Māori New Year in Te Ao Māori (the Māori world view).

Closely connected with the maramataka (the Māori lunar calendar), the reappearance of the Matariki stars in the early morning sky brings the past year to a close and marks the beginning of the new year. Mātauranga Māori (ancestral knowledge and wisdom) is at the heart of celebrations of the Matariki public holiday and it will be a time for;

- Remembrance – Honouring those we have lost since the last rising of Matariki
- Celebrating the present – Gathering together to give thanks for what we have
- Looking to the future – Looking forward to the promise of a new year

Historically, the stars of Matariki were also closely tied to planting, harvesting and hunting. If the stars appeared clear and bright, it signified an abundant season ahead.

Today there are many ways to acknowledge the Māori New Year and observe the rising of Matariki;

- Take time to remember loved ones who are no longer with you
- Give thanks for the year that has passed
- Enjoy a Matariki feast together
- Plan for the next year
- Spend time with family and friends
- Write down your wishes for the year
- Plan to grow a garden

Matariki falls on Friday 28 June in 2024. The best time to view the Matariki cluster is early morning, just before dawn.

For all your fencing requirements

# WESTERN FENCING

SHEEP | DAIRY | DEER



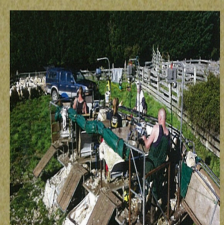
Call BEVAN 0277 413 213



## DAGWOOD DAGGING

Available now to all new and existing customers for all your crutching requirements.

3 Stand or Single trailer available  
7 days a week, wet or dry.



No job too big or too small.  
Competitive rates

**Jeff Chambers**  
027 3042 241

## Waiau Town & Country Club

<https://www.waiautownandcountryclub.co.nz>  
Phone: 03 2266 489 | Address: 41 King St Tuatapere  
✉ waiautcc@gmail.com | f facebook.com/waiautcc

 Courtesy Van Available

### Club Opening Hours

Mon - Thurs 4pm till close.  
Fri 3pm - close.  
Sat Noon - close.  
Sun 3pm - close.

**New Members Always Welcome!**  
Just pop in or call the club for a nomination membership form.  
Annual membership 2022/23 is \$50 p/p or \$30 p/p for pensioners.

**Bistro Hours** **Thursday - Sunday 5 - 9pm\***  
(\*Bistro may close from 7:30pm onwards if not required)

 We are the perfect place for your functions/birthdays!

Keep an eye on our Facebook Page for more details on upcoming events ...

We can cater! Call us to discuss options!  
03 22 66 489

**Waiau Town & Country Club**  
Members and their Invited Guests

## WRAPPING THE

# Humpridge track

TUATAPERE NEW ZEALAND

## 23-24 Season

This season was certainly one of the wetter summers we've had on the Humpridge Track in recent years. The punters have had to deal with mud along the South Coast Track again this past season, which we had hoped would have been sorted by now with the Great Walk upgrades. Alas, inherent delays and weather have played their part again, consequently moving contractors around a bit, working where it is most suitable weather-wise. Nevertheless, we have had a good season with over 3100 walkers passing through, about 700 down from the post covid season high of 3900. We continue to upgrade lodges and general infrastructure to meet our strategic objectives and continuously improve customer experience. These upgrades are internally funded and will enable us to meet an anticipated increase in international visitors as well as our well-supported domestic market.

One of our primary reasons for joining the Great Walks brand was to increase our international marketing exposure through the DoC Great Walks footprint, which would contribute to our long-term sustainability.

Pre-COVID, approximately 70% of the Great Walks visitors in New Zealand were international, while the Humpridge Track numbers were split - 70% Domestic, 25% Aussies, and 5% International. The potential upside speaks for itself. Post-covid, it may take some time for those numbers to re-align, but we did notice an increase in USA visitors this past season and the European continent. We are planning to reintroduce our Historical Walk once the mud has been cleared off the South Coast Track through to the Wairaurahiri River. This project is being funded by the Humpridge Track and Waitutu Forest Lodge, with logistical support from Wairaurahiri Jet and Fiordland Helicopters. We aim to expand the opportunities beyond the Humpridge Track and contribute to the bigger picture.

An official opening of the Humpridge Track as a Great Walk will be taking place on a still to be announced date in October 2024. Exciting times ahead as we move closer towards a next level in our journey. A great tribute is owed to those who have gone before us as their incredible vision and perseverance is being realised with each passing season. Well done to them.





## Tim and Superior go the extra mile

Are you frustrated with the lack of service from your local fertiliser consultant, peddling the same advice year after year regardless of your production outcomes, environment and sustainability?

Give **Tim Adcock** of Superior Fertiliser Specialists a call. He will bring a whole new meaning to service and client/advisor relationships.

Tim is a key member of the highly skilled Superior team totally committed to helping you develop healthier, more productive soils and plants.

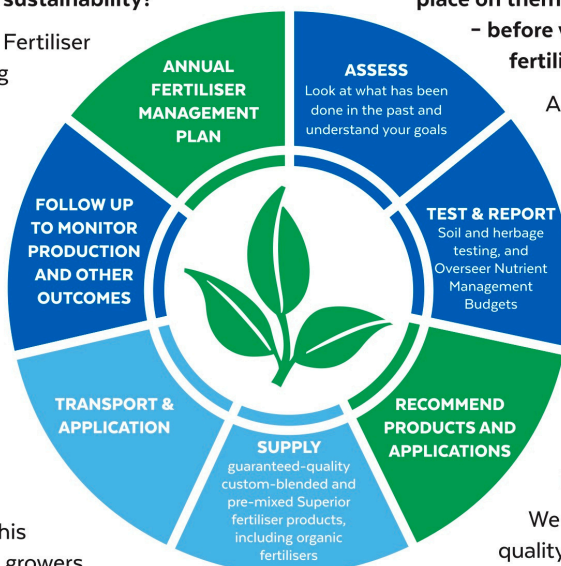
We form a specialist fertiliser company that provides high quality advice and products at competitive prices. We have been doing this for South Island farmers and growers for just on 20 years.

Superior promotes a total soil care package. First, we get to understand the make-up, nutrient status and health of your soils, the demands you are going to place on them, and your production goals

– before we apply one kilogram of fertiliser.

A comprehensive regime of vigorous soil tests will be undertaken and the results will provide the basis of a Superior Fertiliser Management Plan customised for your unique situation. This will complement your farm's Environmental Plan and provide the blueprint for an ongoing annual fertiliser programme.

We then supply guaranteed-quality solid fertiliser for your pasture and crops, monitor production and other outcomes, and update your Plans as required.



It's free to talk so don't hesitate to give Tim a call.  
Phone 021 418 224



**Tim Adcock**  
Fertiliser Advisor  
Otago/Southland  
021 418 224  
tim@superior.net.nz

 FERTILISER SPECIALISTS  
**SUPERIOR**  
[www.superior.net.nz](http://www.superior.net.nz)

# BAUHAUS



## ARCHITECTURAL DESIGN SERVICES

- SITE FEASIBILITY STUDIES
- CONCEPT DESIGNS
- FULL WORKING DRAWINGS
- RENOVATIONS AND EXTENSIONS
- SUBDIVISIONS
- BUILDING CONSENTS
- RESOURCE CONSENTS

0204 1288 082 // [WWW.BAUHAUSNZ.COM](http://WWW.BAUHAUSNZ.COM) // [HELLO@BAUHAUSNZ.COM](mailto:HELLO@BAUHAUSNZ.COM)

Your Community = Your Archive



Central  
& Western  
Archive

## Central & Western Archive - Murihiku Southland update

We have now had over 600 visitors to the Community Archive Heritage hub in the 6 months we have been open, and over 26,000 views of items in the online catalogue of our local and district history. We had been fortunate in gaining significant funding to set up and operate over our first year but have had more issues with finding continuing funding, so the book sale galore is to help with this, thanks to the local Lions and Rural Women's clubs for sponsoring the event.

Our upcoming displays over the next few months are the anniversary of the Tūātapere School opening on 19 June 1913 and the 100th birthday of Four Square on 4 July, which we will use to celebrate all our local Grocer's history.

We look forward to the Great Walk opening later in the year for the Tūātapere Hump Ridge Track, when our Archives Hub will be transformed into all things Hump Ridge for the event and sometime after.

As the winter months and cold closes in, we are looking for more volunteers to help us out; some jobs require computer skills, others can be achieved by simply talking or writing on paper, such as naming people and things in old photos, researching and indexing books, also providing backup to our main volunteers on open days and for research workshops. If you think you can help preserve our local history, please get in touch with us below.

48 Main Road, Tūātapere, 9620 - next to the old Railway Station, for locals. (please contact us first if you need a mailing address)

Ph: 027-211-4675

Email: [centralandwesternarchive@gmail.com](mailto:centralandwesternarchive@gmail.com)



Our ever-growing online collection is available here:  
<https://ehive.com/collections/202139/central-western-murihiku-southland-archive>

### Current and Upcoming Exhibitions

Anzac Memorials of our district's Wartime service personnel, open 25th April to 15th June.

Waiau River - from source to sea, on display until 15 June.  
Dr Elder, exemplary rural GP, permanent static display.

Tūātapere School commemoration of opening date, on display from 19th June.

Four Square 100th Birthday, including Grocers history of Tūātapere & districts, open from 4th July.



Waiau Area School student - Ruby, specifically gifted this piece of Anzac Art to the Community Archive Heritage Hub 10.05.202



Names from left to right: Oliver Abbott (Head Student), Taelah Haines, Liam McLennan, Opie Evans, Taite Sheehan-Ross and Paddy Hewton.

Waiau Area School students - erected this field of remembrance, crosses dedicated to local and district soldiers who lost their lives in WW1.

When we visited the school on 10 May 2024 to photograph this memorial, we were fortunate to have a group of students pose with the Anzac crosses before kindly helping Principal Andrew Pardoe-Burnett put them away. It was a pleasure to engage with these students and explain what we were doing, taking a photographic record of the school's field of remembrance so it can be entered in the Community Archive as a record for the future.

## WAIAU VALLEY SHEARING LTD



**Simon de Vries**  
**Julie Heaps**  
**027 840 9867**  
**03 226 6212**

### EGERTON CONTRACTING

**for all your cartage needs!**

**Bulk Tip Unit**

**Tractor available with soft hands for loading of Baleage etc**

**ALSO Supply available of**

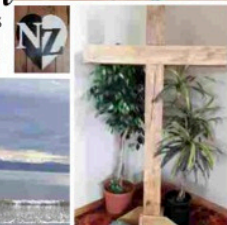
**Wood Chips / Sawdust**

**Beach but-end firewood loads**

**PH: EAMON 027 371 8674**

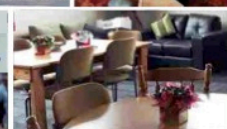
**SOUTHLIFE**  
**Community**  
**CHURCH**

**Steve & Sharon**  
are Pastors  
and we are an area church



We believe in Community and endeavour to show this the best we can by the way we care and serve!

**MISSIONS**  
"BRIDGE CHRISTIAN MINISTRIES UGANDA"



We warmly invite you to come along to one of our services.  
It would be great to see you

**Sunday Service**  
**10am** Truro St, Orepuki

**Steve & Sharon Calder**  
**027 321-1108**

# Alex Reid CONTRACTING

Paddock Cultivation from  
Ploughing to Sowing  
Dry Hire available  
Aerating  
Direct Drilling  
Ridging  
Mulching



## Dairy Lane Maintenance

Tip Trailers • Vibrating Roller • 2 Tip Trucks

## Sheep Conveyor

Drenching, Vaccination etc • 3 way draft

## Large Skid Steer for calf shed cleaning, loading Muck Spreaders etc

4 Muck Spreaders • 16,000 litre Slurry Tanker  
Pond Stirrer • Umbilical Slurry System



**PHONE ALEX**  
**0212775308 CELL**  
**03 2255377 HOME**

## WAIAU SWIMMING CLUB 2023/24 season

As we conclude swimming club for another season I'd like to say how proud of our wee club I am. We are totally run by volunteers, we have coaches that are incredibly passionate and love what they do.

We have coaches that used to be coached themselves at Waiau Swimming Club, we have coaches that don't have children at Swimming Club and we have coaches that themselves have many other of their own work and family commitments.

A huge thank you to our coaches who contribute to club nights on a Tuesday and Thursday and to training sessions on a Tuesday, Friday and Sunday. It has also been wonderful to see some of our swimmers putting their hands up to learn to coach and jumping in the pool to assist coaches with our littlest swimmers.

A big thank you to our committee who work together to offer such a great service in our community. Our aim is to provide swimming lessons at a cost that is reasonable for all of our community. With approximately 80 children enrolled this season we are doing really well.

Thanks to all of our parents/guardians that continue to make the effort on a weekly basis sometimes a few times a week to get their children to Swimming Club and above all the biggest thank you to all of our swimmers that always try their best and always have a big smile on their faces. The progress we see is so rewarding.

We need to acknowledge and thank the work of the Tuatapere Community Pool volunteers who work so hard on keeping our pool and the facility clean and tidy. The Swimathon would be my biggest highlight of the season. Watching our children achieve personal goals, help each other out and work together was one of the best things I've been involved with. Well done to you all. Enjoy your winter and we look forward to seeing you all back in Term 4.

Kaylene  
President

*Prizegiving*

Fraser Cup (points at club champs 100m swims):

Sienna McGregor

Contribution to Swimming: Kaylene Bennett



# Prizegiving

## Age Group Champions & Runner Up

(Runner up only awarded if 4 or more in an age group)

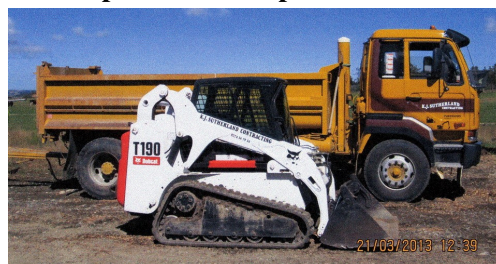
5 year old male champion: Carter Baldwin	9 year old female champion: Charly Verdon
5 year old female champion: Zara Egerton	Runner up: Layla Pont
Runner Up: Ari Walton	10 year old male champion: Angus Dobson
6 year old male champion: Frank Dennison	10 year old female champion: Megan Kollat
Runner Up: Flynn Kollat	Runner up: Tori Egerton
6 year old female champion: Sadie Harris	11 year old male champion: Carter McGregor
Runner Up: Maddie Hammond	Runner up: Jack Hewitt
7 year old male champion: Michael Baldwin	11 year old female champion: Cassie Egerton
7 year old female champion: Riley Van Dam	12 year old male champion: Jake Pont
8 year old male champion: Bill MacPherson	Runner up: Tomas Clarke
8 year old female champion: Della Dobson	12 year old female champion: Libby Anderson
9 year old male champion: Hadlee Bennett	13 year old male champion: Max Tilby
Runner up: Oscar Van Dam	13 year old female champion: Sienna McGregor
<b>Hardest Trier:</b>	<b>Most Improved:</b>
Male	Male
Little: Bear DeVries	Little: Liam Pieper
Junior: Memphis Hays, Liam McLennan	Junior: Bill MacPherson
Intermediate: Finley Clarke, Dusty Pont	Intermediate: Stanley Ridley, Angus Blair-Edie
Senior: Tyler Miller	Senior: James Miller
Female	Female
Little: Abby Robertson, Luca Gill	Little: Hazel Green
Junior: Eve Jordan	Junior: Isla Van Dam
Intermediate: Della Dobson	Intermediate: Rose McDonald
Senior: Libby Anderson	Senior: Aydee Hurley
	Tori Egerton
	<b>Training Trophy</b>
	Junior: Oscar Van Dam
	Intermediate: Jack Hewitt
	Senior: Sienna McGregor
	Fastest 100m IM: Jake Pont
	Fastest 100m Back: Sienna McGregor
	Fastest 100m Free: Sienna McGregor; Sierra Bennett
	Fastest 100m Breast: Sienna McGregor
	Fastest 50m Butterfly: Jake Pont
<b>Best All Round</b>	
Male	
Junior: Rhys Bennett	
Intermediate: Nile Walton	
Senior: Oliver Chamberlain	
Female	
Junior: Ava Pieper,	
McKenzie Tilby	
Intermediate:	
Georgia Hammond	
Senior: Sienna McGregor	

## K.J. Sutherland Contracting Bobcat T190

With attachments: Landscape Rake,  
Augers and Trencher

Suitable for all landscaping, shed and yard  
maintenance

Muck-spreader and tip trailer available



**PHONE KEVIN**  
**027 367 934 / (03) 225 5716**

## NEED A JP?

The following Justices are  
available by appointment:



Tuatapere: Keri Potter 027526 3137

Te Waewae Bay: Shirley Whyte  
027 504 5220

Blackmount: Nicky Baker  
0276435880

## WESTERN ELECTRICAL

2008 LTD

Electrical Solutions

Domestic | Industrial | Commercial

**Quality Service at Competitive Prices**

- New Builds, Rewiring & Alterations
- Dairy Shed, Farm & Industrial Maintenance
- Hotwater Element Replacement
- A/H Call Out Service Provided



**Ph 03 225 8974 / 027 439 3787**  
**Fax 03 225 8973**

# **WINTER WARMERS IN STORE NOW!**



Cruiser 7% 250ml 12pks  
Major Major 330ml  
10pk can ranges



Coruba  
250ml 7% 12pk cans  
(ex zero)



Gordon's G & T 7%  
Gordon's G & S 4%  
Pimms & Lemon 4%  
250ml 12pk can ranges



Jim Beam & Cola; CC  
(incl zero) CC Soda &  
Lime 10pk can ranges  
JB Gold 7% 8pk all 330ml cans



Woodstock (incl zero)  
7% 250ml cans; 5% 330ml  
bottles all 12pks



ODD Company  
10pk can range; Tui Vodka Soda  
(ex Bourbon) 7% 250ml 12pk can  
range



JB 1.75tr



Coruba  
(incl Gold)  
1L



Larios Original 1L



Cody's  
7% 250ml 18pk cans



Barrel 51 5% 330ml bottles  
Tui Bourbon; Barrel 51  
7% 250ml cans; all 12pks



Jim Beam  
Canadian Club  
250ml 7% 18pk cans



Malibu; Kahlua  
(incl Salted Caramel) 1Ltr  
Absolut 700ml



Southern Comfort  
1L



Absolut 1L  
Jameson Original;  
Orange, Cold Brew 700ml



Bacardi  
1Ltr



Bell's  
1L



Appleton  
Estate  
700ml



Jim Beam; CC 700ml



Wolf Blass  
Yellow Label  
range (ex PN)



Villa Maria Cellar  
Selection  
Esk Valley ranges  
(ex PN, Syrahs)



The Ned  
(ex PN) range



Makers Mark 700ml  
JB Devils Cut  
JB Black; JB Double  
Oak 1Ltr



Jim Beam  
1.125L



Jack Daniel's  
Jagermeister; Mt Gay  
Eclipse 1Ltr;  
Woodford Reserve  
Gentleman Jack  
700mls



Export Gold  
Export 33; DB Draught  
15pk bottles



Speights  
Summit Ultra;  
24pk bottles & cans



Heineken  
15pk bottles



Corona  
12pk 355ml bottles



Export Gold;  
330ml 12pk cans



Pure Blonde bottles  
all 330ml 12pks



Promotion period between 1/6/2024 to 30/6/2024. While stocks last. Promotion only available at participating stores. Please contact your local store to confirm whether they are participating in the promotion and check the pricing in-store prior to purchase. Online pricing will vary.

100%  
**NEW ZEALAND**  
thirstyliquor.co.nz



SOCIAL MEDIA

FOLLOW US ON



**ASK ABOUT  
LOYALTY CARD  
BENEFITS &  
GIFT VOUCHERS**





## Waiau Health Trust Youth Representative

Waiau Health Trust is seeking vibrant youth volunteers to offer their unique perspectives on health services.

This role is your chance to express your perspective on community health initiatives and make a real impact.

If you're conscientious, confident and ready to be the voice of youth in our community, email us today with your name, contact details and a short paragraph about why you fit the bill. These roles are great if your thinking of applying to university.

Email: [chairwht@gmail.com](mailto:chairwht@gmail.com)



Are you looking for a space to run a workshop, event or meet regularly in Tuatapere?

The Den is AVAILABLE for Community Groups to book - right next to the playground, with plenty of parking.

Call **Helen Todd** to enquire  
**022 1039 327**

## ORAWIA HALL - BOOTCAMP GROUP

Oh Dear!



Unfortunately, due to damage at the Orawia Hall Bootcamp is temporarily out of action!


We are working on alternative plans and will let you know in due course!

Meanwhile you can still contact us with any questions.

Kathy on 021 0811 6603 or  
Nessa on 021 1165 106





COME HELP US CELEBRATE THE BEST  
LITTLE 9 HOLE COURSE IN SOUTHLAND

# CENTENARY CELEBRATIONS

WAITANGI WEEKEND  
7TH & 8TH FEBRUARY 2025

FOR DETAILS OR TO REGISTER, EMAIL [TUATAPEREGC@GMAIL.COM](mailto:TUATAPEREGC@GMAIL.COM)

## Deb's Sewing & Repair Service

mending to making  
and everything in between

**Got a tricky job? Just ask!**

Call or text **021 030 5667**



GOOD - CHEAP - FAST but you can only pick two

## Tuatapere Freight

LOCALLY OWNED & OPERATED

RUNS MONDAY TO FRIDAY  
WEEKENDS BY ARRANGEMENT

**Phone Brandon**

**027 436 4360**





# MILNES

TRANSPORT

Local & Nationwide livestock cartage  
Call Mike ☎ 0279602788

- Fertiliser spreading
  - Bulk Cartage
- Spreading, Spraying, Slurry and muck application with our JCB
  - Blower truck
  - Gravel

Call Tegan ☎ 0275644313