



Tūātapere | Clifden | Orawia | Blackmount | Monowai | Colac Bay | Orepuki

Cover Photo: Tuatapere - Trevor Willetts from Facebook March 2024

Issue 266

APRIL 2024

MONDAY	TUESDAY	WEDNESDAY	THURSDAY	FRIDAY	SATURDAY	SUNDAY
1 Easter Monday	2	3 Wool & Craft Group 10-3pm The Den	4 Tuatapere Te Waewae Community Board Meeting 3.30pm Waiau T&C Club Sewing & Patchwork Group 10-3pm The Den	5	6	7 Duckshooters Shoot Western Southland Gun Club Pukemaori Grounds 11am
8	9	10	11	12 End of School Term 1	13 Tuatapere Community Market DANCING WITH THE WAIU STARS - RSA Hall or Tui Base Camp	14 Tuatapere Lions Bunny Shoot Prizegiving WTCC 4pm
15	16	17 Wool & Craft Group 10-3pm The Den	18 Sewing & Patchwork Grp 10-3pm The Den	19	20 Deadline for WW May Issue content	21
22 Tūātapere Reserve Pest Control Group Ed Night. The Den 5.30-7.30pm	23	24	25 ANZAC DAY Services at 7am Orawia and 10am Tuatapere RSA	26	27	28
29 School starts Term 2	30 Tuatapere Amenities Trust Funding Applications close					
	Coming up ...	Wool & Craft Group 1st & 15th May 10-3pm The Den	Sewing & Patchwork Group 10-3pm The Den May 2nd & 16th	WAS PTA AGM May 8th		

Special thanks to



Want your event here? Let us know at yourwesternwanderer@gmail.com

COMMUNITY NOTICES & EVENTS

HANDY PHONE NUMBERS

EMERGENCY

POLICE /FIRE/AMBULANCE: 111



MEDICAL CENTRE: (03) 2266 123

TUATAPERE POLICE STATION:
(03) 2269 020

TUATAPERE COMMUNITY WORKER:
027 757 5983

HAUROKO VALLEY SCHOOL OFFICE:
(03) 2266 753

WAI AU AREA SCHOOL OFFICE:
(03) 2266 285

TUATAPERE CEMETERY TRUST:
(03) 2266 065

TUATAPERE SERVICE STATION:
(03) 2266 475

TUATAPERE FOUR SQUARE:
(03) 2266 898

TUI BASE CAMP CAFE-BAR-RESTAURANT
(03) 2266 250

HUNGRY HIPPO SHOP & TAKEAWAYS
(03) 2266 417

WAI AU TOWN & COUNTRY CLUB
(03) 2266 489



In the wake of last year's devastating flooding, the Waiau Star Rugby Club has taken a novel approach to fundraising for repairs by putting their bodies and dignity on the line with a unique event, "Dancing with the Waiau Stars". A night where club members, in a display of dancing athleticism, will compete not just for your entertainment but for an important cause.

The live event on 13th April 2024 at the Tuatapere RSA Hall sold out at an impressive rate—however, those who missed the opportunity to secure a ticket have an alternative way to participate in the fun and contribute to fundraising efforts.

Tui Base Camp will stream the event live; tickets are \$10 and include interactive features like the ability to vote for your favourite couple.

Alternatively, enjoy the event from the comfort of your own home; \$30 will buy you a special online streaming link where you can watch live, ensuring no one misses out on the action.

Those who want to catch some of the live action before the big day are invited to the dress rehearsal open to the public on the evening of 11th April for a donation at the door. The club is also calling for volunteers for various tasks at the RSA Hall:

Clean up and moving furniture Wednesday 10th April from 4pm

Dress Rehearsal 11th April from 6.30pm

Hall set up Friday 12th April from 4pm

Event assistance Saturday 13th April from 7pm

Hall Clean up Sunday 14th April from 12.30pm

See the Waiau Star Rugby Club Facebook Page for further information or phone Alice on 027 270 0363.

The Community Events Sign Needs You!

We're searching for someone to take charge of posting events and notices on our signboard.

Don't worry if you're new to this – we provide training, and it's incredibly straightforward!

Changing the sign typically only takes 10-20 minutes, and you might find yourself doing it a few times a week.

Please contact Paula on
027 434 6777.





ANZAC DAY SERVICES

JOIN US IN HONOURING OUR HEROES

Let us come together as a community to honour
the courage, sacrifice and legacy of the
Australian and New Zealand Army Corps.

EVENTS

7 am Service

Dawn service at Orawia
followed by tea and coffee at the Orawia
Community Centre

10 am Service

Tuatapere RSA hall followed by a march
concluding at the Tuatapere Memorial Library
followed by morning tea at RSA Hall.

**Tuatapere RSA
ANZAC Day
25th April
2024**

Enquiries to John Munro
027 412 2925



24HR SWIMATHON

On the 23rd February 2024 we held our 24hr Swimathon. The Swimathon was a huge success and ran beyond expectations. It was quickly seen as much more than just about the fundraising, it was far more than that, it was about community. People swam, jogged, went away, came back for a catch-up, supported each other, laughed and danced. Children worked together to achieve half-hour stints. Parents supported young children to be a part of the swim, and we had generations of families all having a go.

Our youngest entrant was 4 years old and our oldest was 70. A total of 8404 lengths or 210.10 km was swum/jogged. We had four organisations across four lanes of the pool all fundraising for different reasons:

- S.P.O.T – Suicide Prevention & Outreach Tuatapere fundraising to bring more events and speakers to our community and to provide funding towards individuals who require counselling and support.
- Tuatapere/Orepuki/Blackmount Volunteer Fire Brigades fundraising towards the K10 Te Anau Fire Fighters – looking after, and looking out, for other firefighters.
- Tuatapere Community Pool fundraising for maintenance costs and a new paint job.
- Waiau Swimming Club fundraising for coaching resources and training equipment.

A big thank you to the Tuatapere Lions Club for their \$400 contribution towards the continuous bbq, Tuatapere 4 Square for their late night hot pie drop off, Waiau Health Trust for the bottled water, bananas and apples, Keri Potter for the big pot of soup and Kate & Scott for the bacon, eggs and muffins. Thanks so much to all of our monetary sponsors. Your contributions are a huge help to your nominated organisations. The biggest thank you goes to all of our swimmers/joggers. To have all 4 lanes full for a 24 hour period was a huge accomplishment and the personal achievements we saw were great to see. The event has raised just over \$11,500 across all organisations, which has far exceeded what we had ever set out to achieve. Many thanks to everyone involved in making this event a huge success. We hope to make this a bi annual event so we look forward to seeing you all back in 2026.



Hens for Sale \$13 each

18 month old Brown Shavers

Ex-commercial layers from Te Waewae Eggs
True Southland Free-range

The next lot of chickens available will be available at the beginning of June, and every two months after that.

Ph Rob 03 226 6805 or 022 044 2086



TUATAPERE HANDYMAN SERVICES

Barry Bennett
(03) 226 6730

- Painting - Interior/Exterior
- Waterblasting
- Spider & Fly Spraying
- General Repair Work
- Lawnmowing
- Weed Spraying



WANTED TO BUY

Possum Fur, Hard deer,
Antler, Deer Velvet.

Phone Leith 027 496 3721

Want to know more about the Hump Ridge Great Walk?

For information or to book/walk the Tuatapere Hump Ridge Track – please contact the Track Operations Office directly via www.humpridgetrack.co.nz

Project Webpage: Stay informed with the facts and news via www.doc.govt.nz/hump-ridge-great-walk-project

Project Email: Get in touch to ask questions or to be added to the newsletter distribution list via email: HumpRidgeGWP@doc.govt.nz

Media Enquiries: please direct to media@doc.govt.nz

Apply now for Meridian's Power Up Community Fund

At Meridian, we only generate from 100% renewable resources: wind, water, and sun. We're committed to doing good things with our energy. That means good for people, and good for the environment.

We're proud to back local projects in the communities around our wind farms and hydro stations with our Power Up fund.

With Power Up, your community has a say on what initiatives we support and fund. Managed by a panel of locals and Meridian staff, we're working together to build strong, sustainable communities.

Power Up Manapōuri provides grants for projects in Manapōuri, Te Anau, Tuatapere, and Clifden.

How to apply

Applications for the next funding round are open until midnight on 21 April 2024.

For more information and to apply:

- visit meridian.co.nz/pu-manapouri
- email community.fund@meridianenergy.co.nz
- call 03 357 9732

Do you know of a community project that's working to reduce carbon emissions? Visit meridian.co.nz and search "Decarb fund" for more information.






* 13 Tonne Digger * 5.5 Tonne Digger * 2.7 Tonne Digger- dry hire or operated
 * Tip Truck * Bob Cat * Augers * Post Driver * Tree Saw & Hedge Trimmer

* Tree Trimming * Post Driving * Fencing * Cleaning of Wintering Sheds * Site Clearance * Cartage * Gravelling * Lane Maintenance * General Earthworks

For all enquiries and bookings please contact Lance or Alice Harris
 Lance: 027 304 3714
 Alice: 027 270 0363
 Email: lanceharris533@gmail.com
 Check us out on facebook- Harry's Machines



This year, The Blackmount Trail Ride had its best year of participation to date, with 614 tickets sold. It is fast becoming one of the 'must-attend' events in the Southland trail ride calendar. Run by the Hauroko Valley Primary School Home & School Committee as a fundraiser for Hauroko Valley Primary School, the community support for this event was outstanding. A special thanks to the generous landowners without whom, this event could not happen.

Attendees flocked from across Southland from Invercargill, Winton, Tuatapere, Te Anau, Gore, and even as far as Dunedin and Queenstown.

An increase in sponsorship further bolstered this year's success, and the Trail Ride committee sincerely thanks sponsors for their support. Sponsors play a crucial role in elevating the event and ensuring that the Blackmount Trail Ride delivers an exceptional day of adventure and fun. Rider feedback has been overwhelmingly positive, with many praising the event as the "best trail ride event in Southland." Families appreciated the well-organised, fun-filled day out and promised to return next year with even more friends and family in tow.



Thank you volunteers!

First-time attendees were impressed with the welcoming atmosphere, highlighting the clear marking of trails catering to different ability levels, ensuring a safe and enjoyable experience for all riders.

Shearing

magazine
Des Williams (editor)



Tel 07 839 2891 : Mob 0274 833 465
 Email : shearingmag@xtra.co.nz
Member NZ Guild of Agricultural Journalists and Communicators (Inc)

LAST SIDE PUBLISHING LTD
 PO Box 102, Hamilton 3240, New Zealand

PAUL ANDERSON BUILDER

AVAILABLE FOR ALL YOUR
BUILDING REQUIREMENTS.

NO JOB TOO SMALL.
COMPETITIVE RATES.
REFERENCES AVAILABLE!

Mobile: 027 890 3602
 thetakis@outlook.com



Agricultural Contractors servicing Western Southland and beyond.

BALAGE - SILAGE - GROUNDWORK - FEED TRADING
Nigel 021 226 6156 / fowlecontracting@gmail.com



Phone: Anita Green 027 506 2418
 Tuesday 9-5pm, Thursday 10-8pm, Friday 10-5pm - Appointments are encouraged.



Anne Horrell, Chairperson **Contact: 021 2169 808**
Email: altonlea.horrells@xtra.co.nz

CONGRATULATIONS!

Hauroko Valley Primary on the installation of a multipurpose Turf. Special acknowledgement to Nic Mitchell and Rebecca Robertson for leading this.

Tuatapere Swimathon. Wow, what an event! Big thanks to Kaylene Bennett for being the instigator of this great community occasion.

Brunel Peaks Café nominated as one of the top 50 Gastropubs in NZ. Fantastic!

Golf and Bowls Tournament participants and winners.

WELL DONE!

Tuatapere Wool and Craft Group 'Have a Go Day' (special mention Helen Todd).

Bio Blitz. Led by Environment Southland Staff, children and adults took part in the counting of species in our Domain Reserve on the 28-02-24.

The damp weather did not dampen the enthusiasm!

Bootcamp Crew at Orawia.

THANK YOU!

Harry's Machines for repairing the Senior Citizens' Sign.

Karen Purdue who has been the most recent Community Board Community Partnership Leader. We would like to welcome Stella O'Connor who is our new Community Partnership Leader.

Lynley and Terry of 'The Well'. Thank you for your huge contribution to our community. Best wishes to you both for the next exciting chapter.

MOUNTAINS EDGE CABINS MONOWAI



Hunting, Fishing, Mountain Biking, Kayaking & Tramping Cabin Accommodation

12 Cabins
Double and Single Available
\$35.00 per person per night

Eftpos available
 Full Kitchen Facilities, Showers, Toilets, Playground & the Tennis Courts right across the road!
 We are 'pet friendly'

www.mountainedgecabins.com
Email: mountainedgecabins@gmail.com
 75 Turbine Drive, Monowai. Ph. 03 225 8267



MR STEEL
TUATAPERE
PH: 027 276 6816
MALCOLM

For all your engineering, steel fabrication and repair needs!

PLATE METER SERVICES
PASTURE METER READING THAT'S QUICKER AND EASIER, WITH AT THE GATE REPORTS
TROUGH CLEANING SERVICES

- Specialist in quality pasture meter reading with advanced sensor technology
- Provide 200 measurements per second or 18,500 readings over a single 500m pass
- Provides a fully integrated electronic support system
- Provides a secure web-based storage of information with easy access
- Prompt generated feed wedges for rapid decision making and seasonal comparisons
- Generate reports at the gate, supplying valuable pasture cover data and comparable results every time
- Improve heath & increase animal hydration
- Enhance production & improve water quality
- Reduce bacterial/algae contamination of trough water

CLEAN TROUGH WATER MEANS IMPROVED LIVESTOCK HEALTH

Now 2 bikes available for pasture metering



Brett George • P 027 351 3408  
E platemeterservices@gmail.com

THANK YOU!

Helen McKay, who is a long-time resident, is leaving to be closer to family. Helen (and her husband Val) have been outstanding citizens. Helen taught Highland Dancing for over 50 years. Her students were not only educated in dance but also in poise, teamwork, self-discipline, music appreciation and self-respect. Helen was a wise, knowledgeable community member who always had the community's best interests at heart. Helen will be greatly missed and warm wishes go with her.

Waiau Mouth Residents for your patience during a very challenging time.

OTHER NEWS

A few RFS (Request for Service) calls have been made to SDC.

Thank you to those who do this - The phone number is 0800732732. You are also welcome to ring me or other Community Board members.

REQUEST FOR INFO

This is a reminder that a Request For Information document is available, we are calling for Expressions of Interest for the future use of the railway station. The document is available at southlanddc.govt.nz (under Public Notices) or by hard copy at the Tuatapere Library, Boundary Creek Café and Tui Base Café.

The deadline for responses is 26 April. Tuatapere Te Waewae Community Board Formal Meeting will be held 4 th April. A report following this will be in the next Western Wanderer and the official minutes will be on the SDC website.

OREPUKI SITE VISIT

The CB Chair and SDC staff members met with members of the Orepuki Promotions' Group and other locals to discuss issues/projects. It's great to hear their enthusiastic, creative ideas. An on-site visit to Monowai Village will also take place.

We are having a change of seasons. Enjoy Autumn's beautiful colours and long shadows!



Melanie - your local salesperson

I am proud to be serving my local area, helping people from all walks of life meet their property goals.


After some great sales so far this year, I have a number of buyers still looking.

If you would consider selling, give me a call!

Mel Muldrew
021 068 5262
melanie.m@toddco.nz
TODDCO.NZ
William Todd & Co Ltd, Licensed (REAA 2008)



Choose Local. Choose Melanie.
Serving Southland since 1865.



Irrigation Systems
Pumping & Filtration
Effluent Dispersal
Water Management

20 Winton Hedgehope Highway, Winton
03 236 9805 www.waterforce.co.nz
0800 4 FORCE (4 36723)



C: 0274 247 102
T: 03 225 8652
E: admin@drakeplumbing.co.nz

KIERAN DRAKE
Certifying Plumber
& Drainlayer

TUATAPERE PLAYGROUP

Tuatapere Playgroup welcomes all 0-5 year olds & their parents or caregivers to come join the fun!



You'll find us at **23B Orawia Road, Tuatapere**

Friday mornings from 9am to 12pm.

Bring a packed morning tea and drink bottle.

We provide a warm, friendly atmosphere for children to form bonds and learn alongside each other and a place for parents to connect.

For more info message our Facebook page or contact Gemma on **022 040 3368**

CLIFDEN PLAYGROUP

45 Otahu Eastern Bush Road.



Join our FB Group to check if it's on:
Wednesday (during School Term)
9:30am - 12:30pm.

All mothers and children welcome.
Bring packed lunchbox for your child's morning tea.

Contact: Sarah 027 699 5234

TUATAPERE TOY LIBRARY

Tuatapere Toy Library has been a toy swap/hire service provided to the young families of Tuatapere and surrounding districts since 1989.

The purpose is to create opportunities for the little people of our community to have accessibility to toys.

A small contribution of an annual membership allows families to join the group and have access to the toys.

For more information or questions please text or ring **Nathalie Pahl** on **027 4759 075**



TUATAPERE AMBULANCE

Did YOU Know?

The Tuatapere Ambulance is a funded service by the Tuatapere Lions Club, for the residents of Tuatapere & Districts.

Should you receive an account for this service from St John, please forward it immediately to:

The Treasurer
Tuatapere Lions Club
PO Box 47
Tuatapere



Sometimes we experience difficulty in receiving the invoices for YOUR trip - so **PLEASE** do forward them on to us.

Thank you!

Tuatapere Lions Club Charitable Trust
Ambulance Committee

WESTERN SOUTHLAND HEALTH SHUTTLE

The Western Southland Health Shuttle Service travels from Otautau, Ohai, Nightcaps, Tuatapere, Riverton - covering all of Western Southland. We also connect with the Invercargill-Dunedin shuttle.

The Western Southland Health Shuttle operates Monday - Friday (excluding Public Holidays).

Bookings are required by 3pm the day prior to transport.

Ph: 0800 103 046 to book.

Please book as soon as you receive your appointment.

TUATAPERE VOLUNTEER FIRE BRIGADE

We're on the lookout for members to join this rewarding organization. We are looking for persons who are, ideally, available throughout the day.

If you think that you would like to try this (sometimes lifelong) commitment, then please feel free to come and try it!

We train on Tuesday nights at 7:30pm during daylight saving and 7pm through the winter months.

We look forward to meeting with you.



WAI AU AREA SCHOOL PTA AGM

8th May 7.00pm
Waiau Town & Country Club

Waiau Valley Presbyterian Church Tuatapere

Main Road

We meet every **Sunday at 10.30am**
Need to know more?
Phone or message
Cedric on 022 027 3834

WESTERN SOUTHLAND CATHOLIC MASS

Held Fridays at 4.30pm
in the Anglican Church

cnr Orawia Rd & Birch St Tuatapere.

We are a friendly, lively group of people
and everyone is very welcome to join us
especially those who are visiting the area.
Grateful thanks also to the Tuatapere
Anglican Community for sharing their
church facilities with us.

Fr Gerard Aynsley (Parish Priest)

Ph: **03 218 4123**

basilica.invercargill@gmail.com

Fr Peter Chadwick

Text preferred - 021 0844 8527

NEED A JP?

The following Justices are
available by appointment:

Tuatapere: Keri Potter 027 526 3137

Te Waewae Bay: Shirley Whyte

027 504 5220

Blackmount: Nicky Baker 027 643 5880



Loretta's Lawn Mowing Services

Available to mow lawns
whenever needed

Please contact Loretta

027 462 9527



TUATAPERE HEALTH & GIFT SHOP

(part of Riverton Pharmacy - beside Medical Centre)

69a Orawia Road Ph: (03) 226 6999

12:00pm - 5:30pm Mon-Fri

Good selection of Vitamins, Giftware &
Over-the-counter healthcare

First prescription drop-off from 1:30pm

Second prescription drop-off 4:30pm

COMMUNITY OUTLOOK ARTICLES

The Community Outlook articles are always available on the
On Natures Edge website!

<https://www.onnaturesedge.co.nz/>

SENIOR CITIZENS GROUP

Senior Citizens is a group of over 50s that meet
every **Friday afternoon at 1pm** at the rooms
behind the RSA Hall. We are always looking for
new members so if you would like a fun
afternoon playing bowls, cards or just catching
up with friends, come and join the group.

If you need a ride - we can pick you up!

Please contact:

Olive Bennett (03) 2266 477 or

Alison Bennett 027 224 2724

ESSENTIAL OILS 100% PURE GIFTS OF NATURE Florals Trees Plants Herbs Spices Citrus

To learn more, phone or text your local Wellness Advocate
Carol Erskine Papatotara 0274 599 654



Get your car washed, dried and windows cleaned. Price
arranged on request!

Contact: Rex Hibbs Flat 1/26 Orawia Rd, Tuatapere

The Small Job Man

Tuatapere Area

- Butcher-Boner
- Lawn Mowing
- Weeding
- Trimming
- Water Blasting
- Chainsaw work
- Wood splitting
- Small Building work
- Fence Painting

Senior Rates

Phone **John 022 164 8061**

PLEASE HAVE YOUR ARTICLES, NOTICES, OR UPDATED ADVERTS FOR THE WESTERN WANDERER SENT IN BY
20th of April (for May Issue)



**BEN MCMASTER
BUILDING**

Ph: 027 202 7955
benmcmaster@live.com

- Licensed Building Practitioner
- Sheds, renovations & new homes
- Based in Western Southland

You dream it, we'll build it



Rural Lifestyle Residential
For all your Shearing Services.

**No mob too big
No mob too small
We do it all!**

**Contact Ricky Skipper to book in now
027 351 2620**

**Specialising in
Dairy Conversions
Rural Fencing
Post & Rail**

**H Gill Fencing,
Eastern Bush**
Phone 021 225 5489
After Hours 03 225 5488
Email hamish@gillfencing.co.nz



CHRISTIAN LIVING BIBLE STUDY

7pm Friday Nights
The Den
Erskine Street, Tuatapere
Contact Helen 022 103 9327




**SOUTHERN AREA SCHOOLS
TOURNAMENT**

Waiau Area School is hosting this year's event from

15-17th May 2024

Can You Help?
Are you able to accommodate some students for
Wednesday and Thursday night?

If you're keen to help out in any other way over the three days please contact:

Lea Kollat on 0274371413



KIA ORA, NI HAO, KAMUSTA
Western Wanderer Readers

We are almost through Term 1, with Easter just around the corner, and then the school holidays. We have completed Interschool and Western Athletics—with fabulous skill growth, determination, and results for our athletes. Several students have qualified for Southland Athletics. Congratulations to the following:

2024 Southland Athletic Qualifiers	
Track Event	
60m	Memphis,
100m	Memphis, Layla, Flynn, Angus, Fergal, Jake, Libby
200m	Layla, Flynn, Angus, Jake, Libby
800m	Cohen, Hadlee, Flynn, Finley, Libby, Sienna
1500m	Flynn, Carter, Libby, Sienna
Relay	Connor, Jake, Layla, Flynn, Angus, Dusty, Fergal, Jake, Libby
Field Event	
Long Jump	Layla, Angus, Jake, Sienna
High Jump	James, Sienna
Discus	Isaac, Cassie, Jake, Sienna
Shot Put	Jake,
Nerf	Cassie, Jake, Briar, Sienna

Thanks to Mr Bennett from WAS for supporting our high jumpers with technique training in the fosbury flop.



Our Rippa rugby team represented Hauroko Valley Primary School at the Southland Rippa Rugby Carnival. HVP played four games demonstrating rippa skills, sportsmanship, and teamwork throughout. Ka pai!



We have officially opened our Tiger Turf, with a ribbon-cutting ceremony. This is a fabulous resource for our sport-loving tamariki! THANK YOU to Nic & Rebecca who gained sponsorship to enable this vision to come to life. We are incredibly thankful to our sponsors, supporting our team - Meridian, Community Trust of Southland, Tuatapere Lions Club, SDC Community Partnership Fund, and Waiau Town and Country.

HAUROKO HAPPENINGS

The Blackmount Trail Ride was a massive fundraising event for Hauroko Valley Primary School. Exceptional hospitality was on offer with trails across a range of farmlands showcasing the beauty of Blackmount, with the Takitimu maunga/mountain featuring as a backdrop. Various terrains and challenges to suit all abilities. Lunch included generous delicious meats on offer with mint jelly, accompanied by a bap with coleslaw, onions, home baking, and fruit - yum! A superbly perfect day out!

We especially thank our landowners, the Powell, Gray, and Slee families for providing access for Hauroko Valley to hold The 2024 Blackmount Trail Ride - THANK YOU!

Our Home and School Team, have worked incredibly hard to ensure this was a success. THANK YOU, to our community for supporting us with people power - from marking tracks, sourcing sponsors, first aid, advertising, merchandise, marshalling the course, cooking the BBQ, setting up and taking down the amenities, supplying food including meat, vegetables, and baking for lunch for over 600 people. What an epic achievement!

To our sponsors, please accept our grateful THANK YOU for your support. All fundraising goes directly to support every learner at Hauroko Valley Primary. This enables us to provide our students with learning opportunities within the classroom walls and beyond.



BOUNDARY CREEK
— EST 2022 —

NEW HOURS:
Closing Sunday & Monday from Easter Weekend.

3a Orawia Road
Tūātapere

Email: wendy@boundarycreek.co.nz

Hope to see you soon

For all your Accounting and Tax Solutions

Ask for Janice or Trevor England

☎ 03 2266110

Aparima Accounting Ltd
57 Main Road Tuatapere


CANTERBURY CARS
4WD Specialists

For all your vehicle requirements

Cars, utes, 4WDs, vans

Finance available

Contact: Murray Dowling
027 556 2655

Visit our website
www.canterburycars4x4.co.nz



88.2 FM

Hits of the 80's, 90's & Today

POP UP SHOP

**Quality second-hand goods
affordable prices**

**OPEN FRIDAYS AND
SATURDAYS
10am to 4pm**

Tuatapere Presbyterian Church Hall, Main Road,
Tuatapere.

Enjoy a cuppa and a chat while there.

WANTED

HOUSEHOLD ITEMS, CLOTHING, SHOES, BOOKS,
LINEN, TOYS, AND MORE.

Your donations of any of these items are always
appreciated. These can be dropped off under the
front verandah at the church or for other options
contact me.

CHECK OUT MY WEEKLY FACEBOOK POST FOR
A SELECTION OF THE ITEMS AVAILABLE.

Carol Diack 021 110 1835.

Thank you for helping us to help the community.

WESTERN SOUTHLAND WOOL AND CRAFT GROUP

Spinning, Felt, Weaving, Knitting, Crochet.

Other crafts welcome!

1st & 3rd Wednesday of the month.

10am-3pm. \$8.

BYO Lunch.

Scout Den, Erskine Street.



For details please contact:
Helen Todd 022 103 9327



DUCKSHOOTERS SHOOT

WESTERN SOUTHLAND GUN CLUB

PUKEMAORI GROUNDS

SUNDAY 7TH APRIL 11.00 AM START

SPONSORED BY CUSTOM GUNS

60 TARGETS – SPORTING CLAYS

ENTRY \$50 SUPPLY YOUR OWN AMMUNITION.

SAFETY GLASSES & HEARING PROTECTION REQUIRED.

NO SLINGS OR MAG EXTENSIONS.

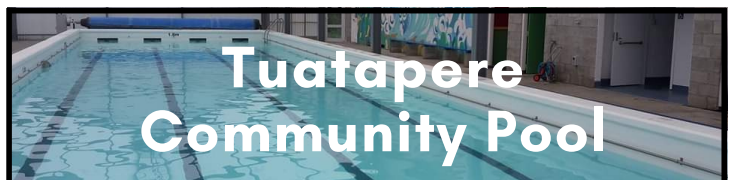
BBQ LUNCH AVAILABLE

GOOD PRIZE FOR DRAWN SCORE

ANY ENQUIRES

CONTACT DES CHAMBERS

(03) 2266655



Like us on Facebook

Tuatapere Community Pool

to keep up-to-date or
message the page for assistance

Season Passes Available

President: Minessa **027 311 2112**

Tuatapere & DISTRICTS LIONS CLUB PROJECT



SUPER DIRT

Bags@\$8.00 ready for your garden
Super Dirt can be collected from
Rabco's Yard, Groveburn Road

Phone Shirley or Stephen
(03) 226 6817

SALVATION ARMY FAMILY STORE TRUCK

The Salvation Army Family Store Truck will come out and collect large amounts of your pre-loved furniture & other household items. This service is free.

Please call the store to organise your visit on **03 214 5380**



**Family
Store**

Donate. Buy. Help.

familystore.org.nz



COMMUNITY NOTICEBOARD

TUATAPERE AMENITIES TRUST

The Tuatapere Amenities Trust meets each year to consider applications for funding submitted by local organisations for projects they are undertaking.

2024 Funding

Application forms will be available from February 1 2024 and these may be collected from the Tuatapere Service Station.

Completed application forms need to be submitted by April 30, 2024.

The Trust wishes to remind applicants that funding for wages, administration and operational costs or retrospective funding will not be granted.

The funds must be utilised for the benefit or betterment of residents within the Tuatapere Urban Resource Area.

Tuatapere's own Crafters Collective

COUNTRY CORNER CRAFTS

**SUMMER HOURS 10 - 4PM
OPEN MOST DAYS**

- Knitwear & sewing
- Jewellery & Bobbin lace
- Woodware
- Jams, pickles, sauces
- Art works & much more
- Looking for a Tuatapere souvenir? "On Natures Edge" always in stock

ENQUIRIES

LOUISE GREBER (03) 668 6001
MAX MALSEN (021) 422 800
LYLA SHERRIFF (03) 226 6187

**New members always welcome.
Want to volunteer? Let us know!**



PUKEMAORI BOWLING CLUB

19 Sim Street Pukemaori

We welcome friends and new members. Come and have a roll!
Practice nights **Thursdays 7pm**



Enquiries Phone **Ralph Carr 027 3328 672**

SOUTHLAND COMMUNITY LAW CENTRE

Free legal information and advice for the community of Southland. 2nd Floor, Cue Building, 33 Don Street, Invercargill. Phone **(03) 214 3180**

Freephone: 0800 550 800
(outside Invercargill city only)



KEEN TO GIVE SQUASH A GO?

Enquires please contact:

Rebecca Robertson 027 424 6129



TUATAPERE COMMUNITY MARKET

Second Saturday of the month.

10am - 1pm

In the Shed next to the old Well.

Please text **027 297 4767** to book a \$5 table

MONOWAI - 100 YEAR CENTENARY

In May 2025 Monowai will celebrate their 100 year centenary along with the power station I am looking to find people who have had an association with the village in their younger years and am particularly interested in old photos and stories.

Contact Merrill at merrill.laurence@gmail.com or call **(03) 225 8267**

TUATAPERE ENVELOPES

Envelopes printed with the "Tuatapere on Natures Edge" Logo can be purchased at Country Corner Craft Shop 1A Orawia Road.
Cost \$4.00 per 10





027 252 7933

- ✓ Renovations
- ✓ Extensions
- ✓ New Builds
- ✓ Sheds/Farm buildings
- ✓ Decks
- ✓ Pre-purchase house Inspections

Call us for any building requirements
Ph 027 252 7933 email: aaroncbltd@gmail.com

FORDE WINDERS SHEARING LTD

Available for all new and existing clients

For all your shearing and crutching requirements

Please phone
Darin Forde 027 229 7760
Jeremy Winders 027 231 4299



Our Services

- **GRAPHIC DESIGN SERVICES**
INCLUDING: LOGO DESIGN & BRANDING PACKAGES, PHOTO EDITING
ADVERTISING DESIGN FOR PRINT OR DIGITAL & EMAIL SIGNATURES
- **OFFICE & WORKSHOP STATIONERY**
INCLUDING: CUSTOM PRESENTATION/DISPLAY ITEMS & BRANDED GIFTWARE
- **WEDDING & EVENT STATIONERY & SIGNAGE**
- **PERSONAL STATIONERY, GIFT ITEMS & PACKAGING**
- **CERTIFICATES - PADS - CALENDARS - BOOKLETS**
NEWSLETTERS - STICKERS - LABELS - VINYL DECALS

Contact us to book your design consult today.
We'd love to learn about your project & help your vision come to life.

We are conveniently located at
9 Cumnock Street, Wallacetown
P: 027 242 8109 E: mcmahondesign@outlook.com

OPENING HOURS:
Mon & Fri: 9.30am - 2.30pm Tues - Thurs: 9.30am - 4.00pm



WAIIAU AREA SCHOOL
Year 1-13 Education
Live to LEARN, LEARN to Live

Kia ora Western Wanderer Readers!



As principal, it gives me great pleasure in sharing with you some of WAS' stats & finances.

As you know, WAS is extremely proud of the progress it has made. We are also very mindful that our WAS students & staff come from all walks of life. To support inclusivity (not unusual for lower socioeconomic or/and larger town schools), the WAS BOT provides management with resources, funding and personnel, above and beyond, to ensure every student gets the opportunity to find success in their schooling experience at WAS.

Here are some WAS stats that may interest you:

- * 40% (57) of our students have started at WAS over the last 15-18 months. In Years 4-13 - 23% (28/122) of our students started at WAS as a New Entrant. Years 1-3 - 88% (21/24) students started at WAS.
- * 56% of our students travel by bus to school. 67% are primary aged.
- * There are 87 families at WAS. 147 students in total. Expected 2024 roll: 153 students.
- * 92 students in Years 1-8 and 55 students in Years 9-13. 49% are boys and 51% are girls. NZ Maori - 29%. Asian students - 13% and Pasifika/other students - 3%.
- * 29% of our families are living in a solo adult/caregiver situation. This is 33% (47) of our students.
- * 27% (39) of our students have a caregiver/s who is on a sickness/unemployment benefit of some type.
- * 24% (34) of our students come from a dairying background.
- * 22% (32) of our students come from a farming background.
- * 16% (23) of our students have a caregiver/s who has a career / in a professional job. 11% (16) of our students have a caregiver/s who are in an unqualified position or in a low-medium income family.
- * 35% (51) of our students come from homes that their caregivers/parent/s own.



WAS Funding from the Government:

A base funding formula per student on average - a primary aged student generates (we rec) \$900 and a secondary student generates \$1200. Naturally more student numbers generate more funding! We are an 'opt in school donations scheme' school where we receive \$160 per student.

50% of our annual budget is on personnel - support staff (41%) and additional teachers (9%). 1.5 million is allocated (paid by the MOE) based on WAS student numbers) to WAS teachers' salaries.

Our Free Lunches in Schools (FLIS) programme is another initiative (separate from the above figures) which is managed by WAS. On average, we receive \$7 per student per day to run this programme.


14% of our annual budget goes towards property expenses. Eg: Heat, light & water costs are 72k.

As any school does, the WAS BOT also budgets for depreciation (60k), asset replacement (varies), additional property projects (varies on initiatives and additional govt funding schemes), school house upgrades (varies) along with any other BOT funded projects which are strategically planned for.


Thanks again for all your support and care towards Waiau Area School.

Ngā mihi - Andrew PB - Principal





Central & Western Archive



Open for district research on:
 every Tues/Thurs, 10.30-4.30
 each 1st & 3rd Friday, 1.30-4.30
 and 1st Sat of month, 1.30-4.30

FREE: wi-fi, public computers, with couch, table/chairs, hot drinks & lunchroom etc.

email: CentralAndWesternArchive@gmail.com
 Next to the Railway Station, Main Rd Tūātapere

TUATAPERE MEDICAL CENTRE

Flu Vaccine Clinic

Thursday 4th April
 9am-4pm
 Tuatapere Medical Centre

Walk in clinic-no appointment necessary

For more info, please call: 03 226 6123



WESTERN ELECTRICAL

2008 LTD Electrical Solutions

Domestic | Industrial | Commercial

Quality Service at Competitive Prices

- New Builds, Rewiring & Alterations
- Dairy Shed, Farm & Industrial Maintenance
- Hotwater Element Replacement
- A/H Call Out Service Provided


MASTERelectricians

Ph 03 225 8974 / 027 439 3787

Fax 03 225 8973

COMMUNITY NOTICEBOARD

TUATAPERE COMMUNITY SUPPORT WORKER

A free and confidential service.
Contact Keri if you:

- Want help with filling forms
- Need advice on who to contact
- Require financial or food assistance
- Know someone that requires assistance or are concerned about someone's well being
- Want to suggest a community related course or activity

Hours: Mon, Wed, Thu 10am - 3pm

Cellphone: 027 757 5983

E-mail: tcworker@extra.co.nz

Call in to the office at the Medical Centre just inside front door 69a Orawia Road, Tuatapere

Come and learn to sew or share your skills

OR

Just get on with your project

SEWING & PATCHWORK GROUP

Bring your lunch and sewing machine

The Den

Erskine Street, Tuatapere

Cost \$10/day. 10am-3pm

Coffee and Tea provided.

Contact: Helen Todd

022 103 9327

Dates:

April 4th & 18th.

May 2nd & 16th.

June 6th & 20th.

July 4th & 18.

Aug 8th & 22nd.

Sept 5th & 19th.

Oct 3rd & 17th.

Nov 7th & 21st.



WAIAU MEMORIAL LIBRARY

Library Hours: Fridays

10:00am - 11:30am

2:30pm - 4:00pm

7:00pm - 8:00pm



For Landscaping, Land Maintenance, Gravel Supply & Cartage

GRADES OF
CRUSHED & SCREENED GRAVELS,
ROOTRAKING, FARM TRACKS,
DAIRYLANES



ELEVATOR SCRAPER,
BOBCAT & ATTACHMENTS,
LANDSCAPING,
TRENCHING AUGERS

Supplies of Gravel Ex Waiau River

River Run Screened Grades

Concrete Gravel Pea Gravel

Rejects for soak holes Crushed - AP30 & AP65

Pebbles for Sheep and Cattle yards & calf sheds

Fines suitable for cow lane capping

K J SUTHERLAND
GRAVELLING &
AGRICULTURAL CONTRACTOR

2475 OHAI-CLIFDEN H/WAY
ORAWIA RD2 OTAUTAU 9682

Ph 0274 367 934



SILAGE • BALAGE • CULTIVATION • EXCAVATION • SLURRY • SPRAYING • CARTAGE



AGRICULTURAL CONTRACTING SPECIALISTS
WESTERN SOUTHLAND

03 2258488 | admin@rabco.nz



The Great Tuatapere Rubber Duck Race

By: Mike Goodwin



In the quaint town of Tuatapere, nestled in Southland, New Zealand, an event brimming with community spirit and joyous laughter marks the calendar once a year.

The Great Tuatapere Rubber Duck Race, more than just a whimsical competition, symbolises the essence of community and the unparalleled strength of small-town camaraderie.

This annual event, sponsored entirely by the local community, is not just about racing rubber ducks down the serene Boundary Creek; it's a lifeline for the Tuatapere Toy Library, providing essential funds to support the joy and educational growth of children in the area.

The event unfolds at the King Street Bridge, transforming Boundary Creek into a bustling arena of excitement and anticipation. With ten races leading up to the grand finale, the bridge-to-bridge chase, the day is packed with entertainment for all ages.

Spectators, armed with their bets on favourite rubber ducks, gather under gazebos, creating a vibrant community picnic scene. The air buzzes with excitement from 10:30 am, as the betting booth opens, leading up to the first race at 11 am, and culminating in the grand finale at 2:20 pm.

What sets the Tuatapere Rubber Duck Race apart is not just the races themselves but the entire community's effort to create a memorable day. From free bouncy castles and ice cream courtesy of Mr. Whippy—funded by the Tuatapere Toy Library—to the delicious sausage sizzle provided by Tui Base Camp, every aspect of the event is catered to ensure a day of fun, laughter, and community bonding.

The races, each sponsored by local businesses highlight the community's commitment to supporting one another. The winning ducks, with names as quirky as their sponsors, like Quackie Chan, Tui Tantrum, and the grand finale champion, Hayden the Master, bring a sense of personality and fun to the proceedings.

WAIATU VALLEY SHEARING LTD



Simon de Vries
Julie Heaps
027 840 9867
03 226 6212

EGERTON CONTRACTING

for all your cartage needs!

Bulk Tip Unit

Tractor available with soft hands for loading of Baleage etc

ALSO Supply available of Wood Chips / Sawdust

Beach but-end firewood loads

PH: EAMON 027 371 8674

SOUTHLIFE Community CHURCH

Steve & Sharon
are Pastors
and we are an area church



We believe in Community and endeavour to show this the best we can by the way we care and serve!

MISSIONS
"BRIDGE CHRISTIAN MINISTRIES UGANDA"



We warmly invite you to come along to one of our services.
It would be great to see you

Sunday Service
10am Truro St, Orepuki

Steve & Sharon Calder
027 321-1108



Special thanks are due to individuals like Nathalie Pahl for bringing it all together; Gary Russell, for the Mr. Whippy ice cream; Avril Johnston, for providing electricity; and the Waiau Town and Country Club, for the bouncy castle.

The event's success also hinges on the dedication of volunteers like Cameron Pahl, who ensures the ducks' safe journey down the creek, and Logan Borthwick, who braves the cold water to record the winners. Not to forget, John Munro, whose commentary, despite the occasional slip, adds a layer of charm and humor to the day. The event's sponsors, including Patterson, Tuatapere Freight, Tuatapere 4 Square, Waiau Town and Country, Harry's Machines, Ricki Egerton Dagging, Sparrow Logging, Boundary Creek General, Neat Cut, and Tui Base Camp, deserve immense gratitude. Their support underscores the event's role in fostering a sense of pride and belonging among the residents of Tuatapere.

The Great Tuatapere Rubber Duck Race is more than just a fundraiser; it's a testament to the power of community. In a world where small towns often struggle to keep community spirit alive, Tuatapere shines as a beacon of what can be achieved when people come together for a common cause. It's a reminder that in the heart of Southland, there lies a small town with a big heart, where mate ship, selflessness, and a bit of quirky fun can bring everyone together, creating memories that last a lifetime.

As the ducks make their way down Boundary Creek, they carry with them the spirit of Tuatapere—a spirit of unity, joy, and unwavering community support. The Great Tuatapere Rubber Duck Race is not just an event; it's a celebration of what makes small towns great, proving that even the simplest of ideas can have a profound impact when powered by the collective effort of a community.



Tui Base Camp



Open
from
8:00am
every day!



Kitchen open until at least 7.30pm

**COME IN &
CHECK OUT OUR SPECIALS**

Live Music:

King Leo - 4th April

Dancing with the Waiau Stars - 13th April
OYSTERS are on the Menu!

Pre-order your morning tea and lunches by calling **(03) 226 6250** and we can have it ready for you to pick up when it suits you.

Don't forget we have a mini-van!
Contact us to organise a night out at
Tui Base Camp (pick-up and drop-off).
Enquires to James 027 837 3521

**For all of your dine in and takeaway
requirements including:**

In-house roasted Amore Coffee
In-house made pies, sausage rolls,
cheese rolls
Range of breakfast options
Packed lunches
Catering

Phone: (03) 226 6250

www.tuibasecamp.co.nz



Tui Base Camp



**Keep an eye on our
Facebook Page
for our latest updates!**



WAI AU HEALTH TRUST

69a Orawia Road, Tuatapere. Ph: (03) 226 6123

Monday to Friday 8:30am - 4:30pm

Approved Registered ACC Provider



Flu Vaccines 2024:

Flu Vaccines are now available at the practice. We will be having walk-in clinics on the following dates:
Thurs 4th April – 9am to 4pm (TUATAPER E clinic)
Wed 10th April – 7.30pm to 8.30pm (OHAI clinic)
Thurs 18th April – 2pm to 6pm (TUATAPER E clinic)
In many cases it is free. The cost of an unsubsidised flu vaccine is \$36.

After Hours Care:

Tuatapere Medical Centre continue to offer an after-hours service. If you are unwell and require medical care or advice outside of our normal business hours, call 032266123 - you will automatically be connected to our afterhours triage service, Ka Ora. Ka Ora's qualified professionals will discuss your concerns and advise you of the process to be followed. If deemed that you need urgent care they will contact our practitioner, or should our team be unavailable, you will be connected to one of their available medical practitioners.

RAT Tests:

Available for free to collect in the waiting room or call and we can leave outside in the collection bin.

Cervical Screening / HPV Self Swab:

HPV screening became the new method for cervical screening in Aotearoa New Zealand. HPV testing is a better first screening test. It looks for the human papillomavirus (HPV), which causes cell changes that may lead to cervical cancer. This gives you options for how you have your screening sample taken:

- A vaginal swab – you can either self-test, or a health professional can help
- A cervical sample (previously known as a smear test) – taken by a health professional.

We can help you find out which type of test is better for you. The vaginal swab is quick and easy to do. But this may not be suitable for everyone. Some people may be recommended to have a cervical cell sample taken (previously known as a smear test) depending on their screening history. Some people may also prefer to have their sample taken as a cervical sample. A cervical sample also tests for HPV. If you do a vaginal swab test and HPV is found, you will either be recommended to return to have a cervical sample taken as a follow-up test, or referred directly to colposcopy. This will depend on the type of HPV detected.

Please phone if you wish to discuss this further with a nurse.

Jo Sanford (Manager)

Cell: 027 295 0429

Tuatapere Medical Centre Hours for 2024

Monday	Amanda McCracken	9.00am - 12.00pm: 1.30pm - 4.30pm
Tuesday	Amanda McCracken Ohai	9.00am - 12.00pm
	Amanda McCracken Tuatapere	1.30pm - 4.30pm
Wednesday	Amanda McCracken	9.00am - 12.00pm: 1.30pm - 4.30pm
Thursday	Amanda McCracken	9.00am - 12.00pm: 1.30pm - 4.30pm
Friday	Amanda McCracken	9.00am - 12.00pm: 1.30pm - 4.30pm

Monday - Friday: Registered Nurses: 9.00am - 12.00pm: 1.30pm - 4.30pm

BARRETT *Ag* LTD

FULL SILAGE AND BALEAGE SERVICE



ALL CULTIVATION
INCLUDING DIRECT DRILL
AND STRIP TILLING - PRECISION PLANTING



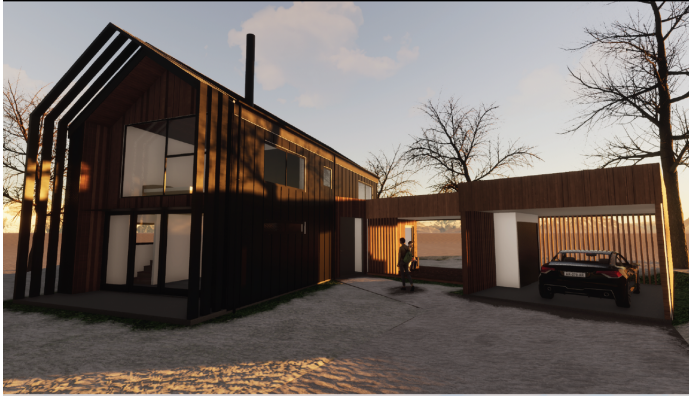
EXCAVATION
20 TONNE DIGGER/ GRADER
D85 BULLDOZER/ ROLLER
TIP TRUCKS AND TRAILERS



Barrett Ag Ltd
Ph: Kahu- 027 5183 448
E: barrettagltd@gmail.com
FB: Barrett Ag



BAUHAUS



ARCHITECTURAL DESIGN SERVICES

- SITE FEASIBILITY STUDIES
- CONCEPT DESIGNS
- FULL WORKING DRAWINGS
- RENOVATIONS AND EXTENSIONS
- SUBDIVISIONS
- BUILDING CONSENTS
- RESOURCE CONSENTS

0204 1288 082 // WWW.BAUHAUSNZ.COM // HELLO@BAUHAUSNZ.COM

Your Community = Your Archive



Central
& Western
Archive

Central & Western Archive - Murihiku Southland update

We have had such a wild and wonderful ride since opening our Heritage Hub to the public on 15th October 2023. At this opening weekend alone, we had nearly 100 visitors, and our own local legend Peter Johnson, ran a pottery wheel demonstration on our deck (See photo) We've now had more than 400 visitors!

We have held 10 workshops, we have re-started our Family History/Whakapapa Research workshops each fortnight, and we are now running some Community Heritage Preservation sessions. The most successful was our Photo Preservation Workshop on 20 March, as part of the Heritage Month events run by Heritage South. Attendees had a ball, as seen in photos.



We have now also put on 3 different Heritage displays, with involvement from the wider community. Historical Arts & Crafts, the Waiau A&P History and now we have the Waiau River History, including the first bridges, the earlier punts & the later power stations.

Next, Four Square has asked us to help them with their 100th-year celebrations, and we will be asking for old grocery shop items from history to do a big display on the history of the town and district's grocery stores.

Then come October, the hub will be transforming into a history display of the Tūātapere Hump Ridge Track for their Great Walk Opening.

It is thanks to Hump Ridge Track Trust funding that we were able to purchase our first ever digital storage in 2022.



Huge thanks to the Lotteries Grants Board, and our own local Tūātapere Te Waewae Community Board and the Community Partnership Fund, we are able to provide these services to the community:

FREE unlimited Wi-Fi, FREE Public Use Computers (both laptop and desktop) FREE basic computer skills, we can also do emails for you. We offer our professional office equipment for the community to use; either come and do it yourself, ask to be shown how to use these machines or one of our great volunteers will do it for you.

We offer up to A3-size printing, copying, and scanning, up to A3-size paper and card cutting, up to A3-size laminating, up to A3-size Booklet binding, and up to A3-size heavy-duty stapling.

Massive thanks to Meridian Power Up Fund for granting us most of the money to buy our DigiHub. Our digitising services are also available to the public, we can now digitise, copy or extract nearly all formats:

VHS	Slides
USB	Film
SD	Negatives
External Hard-drives	Photos
Computer Hard-drives (both laptop & Desktop)	Papers
CD/DVD	Books

If you are copying/digitising historic material and would like to donate is a copy, we will do these services for free.

If it is personal or business material, we just ask a koha or gift to cover our expenses.

We are able to keep all this secure due to the generosity of a grant for a security system from the Tūātapere District Lions Charitable Trust.

Aside from the historical displays, the Archives Library, the Research Resources and the screeds of historical photos and records we now care for on behalf of the community, we operate not only a Heritage Hub but a Community Space.

For all your fencing requirements
WESTERN FENCING
 SHEEP | DAIRY | DEER

Call BEVAN 0277 413 213

DAGWOOD DAGGING

Available now to all new and existing customers for all your crutching requirements.

3 Stand or Single trailer available
 7 days a week, wet or dry.

No job too big or too small.
Competitive rates
Jeff Chambers
 027 3042 241

Waiau Town & Country Club
<https://www.waiautownandcountryclub.co.nz>
 Phone: 03 2266 489 | Address: 41 King St Tuatapere
 waiautcc@gmail.com | facebook.com/waiautcc

Courtesy Van Available

Club Opening Hours
 Mon - Thurs 4pm till close.
 Fri 3pm - close.
 Sat Noon - close.
 Sun 3pm - close.

New Members Always Welcome!
 Just pop in or call the club for a nomination membership form.
 Annual membership 2022/23 is \$50 p/p or \$30 p/p for pensioners.

Bistro Hours **Thursday - Sunday 5 - 9pm***
 (*Bistro may close from 7:30pm onwards if not required)

We are the perfect place for your functions/birthdays!

Keep an eye on our Facebook Page for more details on upcoming events ...

We can cater! Call us to discuss options! 03 22 66 489

Waiau Town & Country Club
 Members and their Invited Guests

Alex Reid CONTRACTING

**Paddock Cultivation from
Ploughing to Sowing
Dry Hire available
Aerating
Direct Drilling
Ridging
Mulching**



Dairy Lane Maintenance

Tip Trailers • Vibrating Roller • 2 Tip Trucks

Sheep Conveyor

Drenching, Vaccination etc • 3 way draft

Large Skid Steer for calf shed cleaning, loading Muck Spreaders etc

4 Muck Spreaders • 16,000 litre Slurry Tanker
Pond Stirrer • Umbilical Slurry System



Rural Contractors
NEW ZEALAND

**PHONE ALEX
0212775308 CELL
03 2255377 HOME**

Central & Western Archive - Murihiku Southland Cont.

If you need a warm place to hang out on cold days or a cool place to relax on hot days, we have tables & chairs, a comfy couch, coffee & tea so come on down, have a look and take some time out. We are always up for a chat about history or if you want to lend a hand and meet other locals, there is always odd jobs to do.

We'd be interested to see even more volunteers involved too. For the older ones, we'd love to record your experiences and get your help identifying photos of people and places. For the younger ones, we'd love your help with the tech. We are selling local/regional history books by Lloyd Esler & others to help fundraise for our ongoing costs, and if you purchase from us, the proceeds all go into preserving local history.

All in all, so far, the Community Archive Heritage Hub, run by Central & Western Archive - Murihiku Southland, and under the governance of Tūātapere and District Promotion Incorporated, has been a massive success. But as we go forward and seek the funding for us to remain operational, your support is key. If you are able to drop us a letter or send an email about how we have helped you or what history you have enjoyed at the Heritage Hub, we can present these to our potential funders when seeking grants of money to carry on providing you with these services.

Huge appreciation to all our wonderful donors, funders, volunteers and supporters, we could not have done this without you all. Ngā mihi, from Suz & the Team.

48 Main Rd, in the old Plunket building & next to the Railway Station.

Contact us on:

Ph 027-2114675

Email: CentralAndWesternArchive@gmail.com

Facebook:

<https://www.facebook.com/CentralAndWesternArchive>

At the hub during open hours:

Every Tues/Thurs 10.30-4.30

Each 1st/3rd Friday 1.30-4.30

And the first Saturday of the month from 1.30-4.30.

Link to our online heritage catalogue portal is:

<https://ehive.com/collections/202139/central-western-murihiku-southland-archive>



Tim and Superior go the extra mile

Are you frustrated with the lack of service from your local fertiliser consultant, peddling the same advice year after year regardless of your production outcomes, environment and sustainability?

Give **Tim Adcock** of Superior Fertiliser Specialists a call. He will bring a whole new meaning to service and client/advisor relationships.

Tim is a key member of the highly skilled Superior team totally committed to helping you develop healthier, more productive soils and plants.

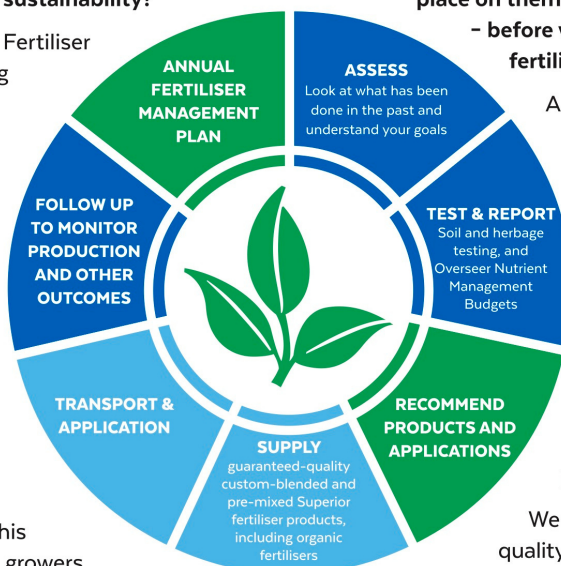
We form a specialist fertiliser company that provides high quality advice and products at competitive prices. We have been doing this for South Island farmers and growers for just on 20 years.

Superior promotes a total soil care package. First, we get to understand the make-up, nutrient status and health of your soils, the demands you are going to place on them, and your production goals

– before we apply one kilogram of fertiliser.

A comprehensive regime of vigorous soil tests will be undertaken and the results will provide the basis of a Superior Fertiliser Management Plan customised for your unique situation. This will complement your farm's Environmental Plan and provide the blueprint for an ongoing annual fertiliser programme.

We then supply guaranteed-quality solid fertiliser for your pasture and crops, monitor production and other outcomes, and update your Plans as required.



It's free to talk so don't hesitate to give Tim a call.
Phone 021 418 224



Tim Adcock
Fertiliser Advisor
Otago/Southland
021 418 224
tim@superior.net.nz

 FERTILISER SPECIALISTS
SUPERIOR
www.superior.net.nz



AUTUMN AWESOMENESS GRAB A DEAL NOW!

\$24.99
EACH

Seagers G&T 7%; G&S
4% 250ml 12pk can range

\$25.99
EACH

ODD Company
10pk can range

\$29.99
EACH

Gordon's G & T 7%
Gordon's G & S 4%
Pimms & Lemon 4%
250ml 12pk can ranges

\$29.99
EACH

Cruiser 7% 250ml 12pk can range
Major Major 330ml
10pk can range

\$42.99
EACH

Long White
15pk bottles

\$27.99
EACH

Woodstock (incl zero)
7% 250ml cans; 5% 330ml
bottles all 12pks

\$27.99
EACH

Jim Beam & Cola; CC
(incl zero) CC Soda &
Lime 10pk can ranges
JB Gold 7% 8pk
all 330ml cans

\$29.99
EACH

Jim Beam
Canadian Club
4.8% 330ml 10pk bottles

\$31.99
EACH

Coruba
250ml 7% 12pk cans
5% 10pk bottles (ex zero)

\$27.99
EACH

Barrel 51 5% 330ml bottles;

\$39.99
EACH

Cody's
7% 250ml 18pk cans

\$16.99
EACH

The Ned
(ex PN) range

\$12.99
EACH

Wolf Blass
Yellow Label
range (ex PN)

\$49.99
EACH

Midori 1Ltrs

\$37.99
EACH

Gordon's
Smirnoff
700mls

\$49.99
EACH

Ballantines 1L
Jameson (ex Black Barrel)
700ml range
Beefeater 24 700ml

\$51.99
EACH

Bacardi
1Ltrs

\$44.99
EACH

Larios Original 1L

\$54.99
EACH

JB 1 1.25ml
JB Devils Cut
JB Black 1Ltrs

\$45.99
EACH

Jack Daniel's Original
Jagermeister
700mls
Southern Comfort 1L

\$47.99
EACH

Famous
Grouse 1L

\$39.99
EACH

Johnnie
Walker Red
700ml

\$51.99
EACH

Appleton
Estate
700ml

\$48.99
EACH

Coruba
(incl Gold) 1L

\$24.99
EACH

Export Gold
330ml 12pk cans

\$29.99
EACH

Heineken
12pk 330ml bottles

\$43.99
EACH

Speights
Summit Ultra
24pk bottles

\$25.99
EACH

Heineken Silver
12pk bottles

\$29.99
EACH

Export 33; DB Draught
15pk bottles

Promotion period between 1/4/2024 to 30/4/2024. While stocks last. Promotion only available at participating stores. Please contact your local store to confirm whether they are participating in the promotion and check the pricing in-store prior to purchase. Online pricing will vary.

100%
NEW ZEALAND
thirstyliquor.co.nz

OWNED AND
OPERATED

FOLLOW US ON
SOCIAL MEDIA

ASK ABOUT
LOYALTY CARD
BENEFITS &
GIFT VOUCHERS

K.J. Sutherland Contracting Bobcat T190

With attachments: Landscape Rake,
Augers and Trencher

Suitable for all landscaping, shed and yard
maintenance

Muck-spreader and tip trailer available



PHONE KEVIN
027 367 934 / (03) 225 5716

Tūātapere Reserve Pest Control Group (CT)

Hi, you may have heard of our recently established Trust, we are dedicated to restoring the health and mauri of our beautiful reserve. Following the successful bioblitz run by ES which involved many locals and WAS & HV schools, we look to continue the great conservational work and biodiversity studies in our reserve.

We invite all interested parties to attend our community education night to see our trapping displays and learn about our goals for eradicating pests from our 200 hectare reserve. We are hoping to expand our resources and are looking for more helpers and sponsors. We intend this to be a fun & family-friendly community night with light refreshments provided. We'd love to see you there!

Venue: Scout Den

Date: Monday 22 April

Time: 5:30 to 7:30 PM

Trustees & Committee members: Tony & Maria Shore, Dave Todd, Jared Fleurty, & Glenys Steele.

Contact: 0274307731 Glenys 0272420392 Tony

Check out our Facebook page:

<https://www.facebook.com/groups/1050737212612891/>

MILLARS

- PLUMBING
- GAS FITTING
- DRAINLAYING
- LICENSED BUILDER

Master Plumbers
f Ph 027 4340 705 or 03 225 8567

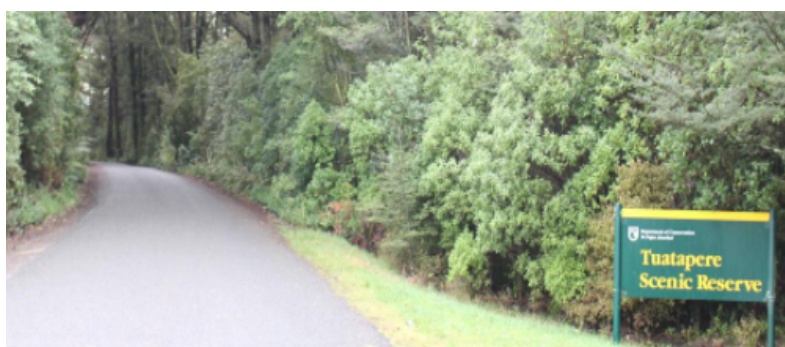


Jewelled gecko displayed at the Bioblitz.

UPDATE

February went by rapidly. We enjoyed a great day at the Bioblitz held at the school and Domain. I was impressed with the attentive and inquisitive behaviour of all the students who attended. We continue to trap pests within the Domain with fair results. Arriving soon are our recently bought AT220 traps, kindly sponsored by SDC, Rural Women's Association. Tuatapere RSA and Robert Orchard.

These are auto traps and very effective; thanks, team.



We specialise in:

Resource consents

Farm environmental plans

Policy advice

DOC concessions

Landscape plans & assessment

We take care of the paperwork,
so you can do what you do best!

Sonya: 027 5050 077

Rebecca: 027 4246 129

www.slwp.co.nz

Locally owned & operated

Waiau Health Trust Youth Representative

Waiau Health Trust is seeking vibrant youth volunteers to offer their unique perspectives on health services.

This role is your chance to express your perspective on community health initiatives and make a real impact.

If you're conscientious, confident and ready to be the voice of youth in our community, email us today with your name, contact details and a short paragraph about why you fit the bill. These roles are great if your thinking of applying to university.

Email: chairwht@gmail.com



Are you looking for a space to run a workshop, event or meet regularly in Tuatapere?

The Den is AVAILABLE for Community Groups to book - right next to the playground, with plenty of parking.

Call **Helen Todd** to enquire
022 1039 327

ORAWIA HALL - BOOTCAMP GROUP

Come along to our bootcamp to improve your fitness, strength and well-being.

It runs for 1 hour every:

Monday, Wednesday & Friday morning from 6am to 7am.



New people are always welcome.

Cost is \$5 per session - pay as you go!

Contact:

Kathy on **021 0811 6603** or

Nessa on **021 1165 106**

COME HELP US CELEBRATE THE BEST LITTLE 9 HOLE COURSE IN SOUTHLAND

CENTENARY CELEBRATIONS

WAITANGI WEEKEND
7TH & 8TH FEBRUARY 2025

FOR DETAILS OR TO REGISTER, EMAIL TUATAPEREGC@GMAIL.COM

Deb's Sewing & Repair Service

mending to making
and everything in between

Got a tricky job? Just ask!

Call or text **021 030 5667**



GOOD - CHEAP - FAST but you can only pick two

Tuatapere Freight

LOCALLY OWNED & OPERATED

RUNS MONDAY TO FRIDAY
WEEKENDS BY ARRANGEMENT

Phone Brandon

027 436 4360



TUATAPERE SERVICE STATION

20 ORAWIA ROAD
PHONE: 03 2266475

HARDWARE IN STOCK

METRIC BOLTS & NUTS
IMPERIAL BOLTS & NUTS
GUTTER BOLTS
DYNA BOLT
COACH BOLTS
TEK SCREWS
WOOD SCREWS
SELF TAPPING SCREWS
HINGES, BRACKETS,
CATCHES

HYDRAULIC FITTINGS

WE NOW STOCK A GOOD RANGE
OF CRIMP ON HYDRAULIC
FITTINGS FOR AGRICULTURE
HOSES WE CAN ALSO REPAIR OR
MAKE UP NEW HOSES

MECHANICAL NEEDS FOR ALL YOUR

Car, 4WD, Trailer, Caravan & Motor
bike WOF's
Servicing all vehicles
Light Engineering
New Tyres
Electrical Work
Scanning of most vehicles



OPENING HOURS

Monday – Friday
8.00am to 5.00pm

TUATAPERE REAL ESTATE NEWS



Recent Testimonials

A huge thank you to Robert from Kim & I for all the hard work you put into selling our house. If you hadn't reached out to us we would still be waiting for something to happen.



Leah & Kim Longman

Robert Orchard is a very professional Real Estate Agent who helped us through our House Purchase. My husband and I would highly recommend Robert to find and purchase a property with him.



Carolyn Forster

MARKET UPDATE

After a reasonably quiet few months in mid to latter 2023, there has been a noticeable increase in buyer activity over the past few months. Successful sales have resulted in delighted sellers, with some new purchasers eager to make Tuatapere their home. If you are considering selling - NOW is a great time, call me!

Are you considering Selling?
I have BUYERS looking for:

- 3 Bedrooms and good Garaging
- 2 Bedrooms - Retired couple looking for a project & not afraid of a bit of hard work

For every house I sell, I'll
DONATE \$100 to the
Tuatapere Reserve Pest
Control Group

Want to know what your property is worth?

CALL YOUR LOCAL, RESIDENT AGENT



Robert Orchard
Tuatapere

027 9241 204

tuirealestate1@gmail.com

WWW.RIVERTONREALESTATE.CO.NZ



Riverton Real Estate (2018) Ltd Licensed Agent REAA 2008