

Wishing you all  
Happy Holidays  
Hari Kirihimete  
& A Happy New Year!

# WESTERN Wanderer

Tuatapere | Clifden | Orawia | Blackmount | Monowai | Colac Bay | Orepuki

Issue 263

At a glance ... what events are on this month?

DECEMBER 2023

MONDAY	TUESDAY	WEDNESDAY	THURSDAY	FRIDAY	SATURDAY	SUNDAY
				1	2	3
4 Waiau Star Rugby Club AGM Tuatapere Fire Brigade 7:30pm	5	6	7	8 Dr Elder Bursary Fund Applications close  The Life & Times of the Late Dr Eric Elder Book Launch 2pm, WTCC ALL WELCOME	9 Dr Elder books go on sale at Boundary Creek Gallery & Corner Country Crafts  Tuatapere Community Market, The Shed at The Well 10am-1pm	10 Western Southland Gun Club Xmas Shoot Pukemaori Grounds 10am Must bring own ammo
11	12	13 Last day of School for Waiau Area School	14	15 Last day of School Hauroko Valley Primary  S.P.O.T's Tuatapere Community Food Drive 2023 6:30pm onwards	16	17
18	19	20	21	22	23 Last Popup Shop for 2023  Christmas in the Domain 6:30pm onwards Annual Tuatapere Christmas Parade 7pm	24 Christmas Eve Carol Service Tuatapere Presbyterian Church 7pm
25 Community Christmas Dinner Tui Base Camp 12 Noon	26	27	28	29	30	31
Coming up ...	Annual Tuatapere Sports Day Tuatapere Domain New Years Day  WS Gun Club New Years Day Shoot Pukemaori, 10am Bring own ammo	Revitalize Music Festival Mangapiri Downs Organic Studfarm Clifden-Blackmount Rd 2-4th Jan 2024	Waiau Memorial Library reopens 5 January 2024  20th January Deadline for WW February Issue content	First day of Term 1 2024 for all WAS students & Hauroko Valley Primary School 31 January	Waiau Collie Club 101st Annual Dog Trials All welcome February 2nd 2024 Wairaki Station  Popup Shop re-opens 2 February 2024	Waiau A&P Show 10 February 2023 Tuatapere Domain

Special thanks to

## COMMUNITY NOTICES & EVENTS

### HANDY PHONE NUMBERS

#### EMERGENCY

POLICE /FIRE/AMBULANCE: **111**



MEDICAL CENTRE: (03) 2266 123

TUATAPERE POLICE STATION:  
(03) 2269 020

TUATAPERE COMMUNITY WORKER:  
027 757 5983

HAUROKO VALLEY SCHOOL OFFICE:  
(03) 2266 753

WAI AU AREA SCHOOL OFFICE:  
(03) 2266 285

TUATAPERE CEMETERY TRUST:  
(03) 2266 065

TUATAPERE SERVICE STATION:  
(03) 2266 475

TUATAPERE FOUR SQUARE:  
(03) 2266 898

TUI BASE CAMP CAFE-BAR-RESTAURANT  
(03) 2266 250

HUNGRY HIPPO SHOP & TAKEAWAYS  
(03) 2266 417

WAI AU TOWN & COUNTRY CLUB  
(03) 2266 489

## WAI AU MEMORIAL LIBRARY - CHRISTMAS HOURS

Friday 22nd December - Closed

Friday 29th December - Closed



The volunteers at the library would like to wish everyone a Merry Christmas and we look forward to seeing you next year when we re-open on the 5th January 2024.

## CHRISTMAS EVE CAROL SERVICE

All welcome to join us for carols and supper at the Christmas Eve Carol Service at the Tuatapere Presbyterian Church, Sunday, December 24th at 7pm.



Please note there is **no Sunday morning service on 24th December** and **no Christmas Day service** this year.

## THE COMMUNITY EVENTS SIGN NEEDS YOU!

Tuatapere & Districts Promotions is looking for a **volunteer to manage the Community Events Sign.**



Do you have a little bit of spare time to be the person responsible for posting events and notices on the signboard. (Training given - but it is really easy!) It takes about 10-20minutes to change the sign and you may be changing the sign a few times a week.

Please contact Paula on **027 434 6777** if you're keen!

Promotions would like to take the opportunity to say a huge **Thank you** to

*Thank you*

Christine Egerton

for taking care of the Events sign for the last two and a bit years. You've done an awesome job Christine and we really appreciate your time and effort!!

## It's time for **SPUD IN THE BUCKET**

Join in the fun!  
Collect your bucket  
and seed from  
the WTCC!

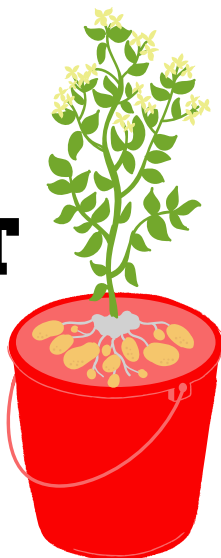
**\$5 entry fee**

Great Prizes!

*If your named bucket from last year  
isn't there, just grab a new one!*

**Judged in March**

Proceeds to Waiau Area School!





## COMMUNITY NOTICEBOARD

### TUATAPERE PLAYGROUP

Tuatapere Playgroup welcomes all 0-5 year olds & their parents/ caregivers to come join the fun!

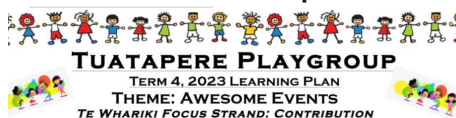


You'll find us at **23B Orawia Road, Tuatapere**  
**Friday mornings from 9:30am to 12:30pm.**

Bring a packed morning tea and drink bottle.

We provide a warm, friendly atmosphere for children to form bonds and learn alongside each other and a place for parents to connect.

For more info message our FB page or contact Gemma on **022 040 3368**



Date	Theme	Activities
20 <sup>th</sup> October	Sandpit Volcanoes	- Make some volcanoes in our sandpit and watch them erupt!
27 <sup>th</sup> October	Happy Halloween	- Dress up for Halloween, create some spooky crafts and enjoy some spooky treats.
3 <sup>rd</sup> November	Glittering Guy Fawkes	- Make some fireworks crafts
10 <sup>th</sup> November	It's Cool To Be Kind -World Kindness Day	- Make cookies or similar and deliver to the pensioner flats and local businesses for World Kindness Day.
17 <sup>th</sup> November	Glorious Gloop	- Make some 'gloop' and enjoy experimenting with its unique texture.
24 <sup>th</sup> November	REAP Visit	- Marae Day from Southern REAP will visit with all her cool play equipment.
1 <sup>st</sup> December	Crafty Christmas	- Making Christmas decorations to take home and put on our trees and our own Xmas door to put up in Moore's Scenic Reserve.
8 <sup>th</sup> December	Magical Christmas Doors of Riverton trip	- A trip to Moore's Scenic Reserve Bush Track to see the Magical Christmas Doors followed by a picnic lunch.
15 <sup>th</sup> December	It's Christmas Let's Party	- Christmas Party with a visit from a special gift-bearing guest. Each family to bring a plate for a shared lunch.



### CLIFDEN PLAYGROUP

45 Otahu Eastern Bush Road. Join our FB Group to check if it's on: **Wednesday (during School Term) 9:30am - 12:30pm.**

All mothers and children welcome.

Bring packed lunchbox for your child's morning tea.  
Contact: Sarah **027 699 5234**

### TUATAPERE TOY LIBRARY

Tuatapere Toy Library has been a toy swap/hire service provided to the young families of Tuatapere and surrounding districts since 1989.

The purpose is to create opportunities for the little people of our community to have accessibility to toys.

A small contribution of an annual membership allows families to join the group and have access to the toys.

For more information or questions please text or ring **Nathalie Pahl** on **027 4759 075**



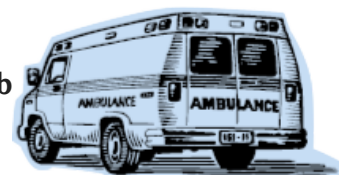
### TUATAPERE AMBULANCE

#### Did YOU Know?

The Tuatapere Ambulance is a funded service by the Tuatapere Lions Club, for the residents of Tuatapere & Districts.

Should you receive an account for this service from St John, please forward it immediately to:

**The Treasurer  
Tuatapere Lions Club  
PO Box 47  
Tuatapere**



Sometimes we experience difficulty in receiving the invoices for YOUR trip - so PLEASE do forward them on to us.

Thank you!

**Tuatapere Lions Club Charitable Trust  
Ambulance Committee**

### WESTERN SOUTHLAND HEALTH SHUTTLE

The Western Southland Health Shuttle Service travels from Otautau, Ohai, Nightcaps, Tuatapere, Riverton - covering all of Western Southland. We also connect with the Invercargill-Dunedin shuttle.

The Western Southland Health Shuttle operates Monday - Friday (excluding Public Holidays).

Bookings are required by 3pm the day prior to transport.

**Ph: 0800 103 046 to book.**

Please book as soon as you receive your appointment.

### TUATAPERE VOLUNTEER FIRE BRIGADE

We're on the lookout for members to join this rewarding organization. We are looking for persons who are, ideally, available throughout the day.

If you think that you would like to try this (sometimes lifelong) commitment, then please feel free to come and try it!

We train on Tuesday nights at 7:30pm during daylight saving and 7pm through the winter months.

We look forward to meeting with you.



## COMMUNITY NOTICES & EVENTS

### Waiau Valley Presbyterian Church Sunday School !!!

Welcomes new children to join us in  
our weekly Christian-based classes

Every Sunday  
from 10:30am



Contact Vicki 027 2270 082  
for more information

### Waiau Valley Presbyterian Church Tuatapere

Main Road

We meet every **Sunday at 10.30am**

Need to know more?

Phone or message

Cedric on 022 027 3834

### WESTERN SOUTHLAND CATHOLIC MASS

Held Fridays at 4.30pm  
in the Anglican Church  
cnr Orawia Rd & Birch St Tuatapere.

We are a friendly, lively group of  
people and everyone is very welcome  
to join us especially those who are  
visiting the area.

Grateful thanks also to the Tuatapere  
Anglican Community for sharing their  
church facilities with us.

Fr Brendan Ward (Parish Priest )

Ph: 03 218 4123

basilica.invercargill@gmail.com

Fr Jaewoo Lee (Asst. Priest)

**Text preferred - 027 309 422**

### Loretta's Lawn Mowing Services

Available to mow lawns  
whenever needed

Please contact Loretta

**027 462 9527**



### TUATAPERE HEALTH & GIFT SHOP

(part of Riverton Pharmacy - beside Medical Centre)

**69a Orawia Road Ph: (03) 226 6999**

**12:00pm - 5:30pm Mon-Fri**

Good selection of Vitamins, Giftware &  
Over-the-counter healthcare

First prescription drop-off from 1:30pm

Second prescription drop-off 4:30pm

### COMMUNITY OUTLOOK ARTICLES

The Community Outlook articles are always available on the  
On Natures Edge website!

**<https://www.onnaturesedge.co.nz/>**

### SENIOR CITIZENS GROUP

Senior Citizens is a group of over 50s that meet  
every **Friday afternoon at 1pm** at the rooms  
behind the RSA Hall. We are always looking for  
new members so if you would like a fun  
afternoon playing bowls, cards or just catching  
up with friends, come and join the group.

**If you need a ride - we can pick you up!**

**Please contact:**

Olive Bennett (03) 2266 477 or

Alison Bennett 027 224 2724

**ESSENTIAL OILS 100% PURE GIFTS OF NATURE**  
Florals Trees Plants Herbs Spices Citrus

To learn more, phone or text your local Wellness Advocate  
**Carol Erskine Papatotara 0274 599 654**



**Get your car washed, dried and windows cleaned.**  
**Price arranged on request!**

Contact: Rex Hibbs Flat 1/26 Orawia Rd, Tuatapere

### The Small Job Man

Tuatapere Area

- Butcher-Boner
- Lawn Mowing
- Weeding
- Trimming
- Water Blasting
- Chainsaw work
- Wood splitting
- Small Building work
- Fence Painting

Senior Rates

Phone John 022 164 8061

PLEASE HAVE YOUR ARTICLES, NOTICES, OR UPDATED ADVERTS FOR THE WESTERN WANDERER SENT IN BY

**20th of JANUARY (for February Issue) - THERE IS NO JANUARY ISSUE**





Tune into Tuatapere's very own Radio Station

**88.2 FM - Tui FM!**

Hits of the 80's & 90's and  
today's current music!

## **POP UP SHOP**

**Quality second-hand goods  
Affordable prices**

**OPEN FRIDAYS AND SATURDAYS  
10am to 4pm**

**Last day for 2023 is Saturday the 23<sup>rd</sup> December**

**First day for 2024 is Friday the 2<sup>nd</sup> February**

Tuatapere Presbyterian Church Hall, Main Road,  
Tuatapere. Enjoy a cuppa and a chat while there.

**Donations of items always gratefully received.  
Thank you for helping us help the community.  
Drop off at the church or for other options  
contact me. Carol Diack 021 110 1835**

## **WANTED BY THE POP UP SHOP**

**Blankets/bedding - kitchen appliances/kitchenware  
- footwear/clothing - bags/handbags - toys - jigsaws**

If you are able to donate any of the above it would be  
much appreciated. Drop off at the church or for other  
options please contact me. Carol Diack 021 110 1835

## **WESTERN SOUTHLAND WOOL AND CRAFT GROUP**

Spinning, Felt, Weaving, Knitting, Crochet.  
Other crafts welcome!

1st & 3rd Wednesday of the month.  
10am-3pm. \$5. BYO Lunch.  
Scout Den, Erskine Street.

For details please contact:  
Helen Todd 022 103 9327



## **NEED A JP?**

**The following Justices are available  
by appointment:**

**Tuatapere - Keri Potter - 027 526 3137**

**Te Waewae Bay - Shirley Whyte - 027 504 5220**

**Blackmount - Nicky Baker - 027 643 5880**



## **COMMUNITY NOTICEBOARD**

### **WAI AU MEMORIAL LIBRARY**

**Library Hours: Fridays**

10:00am - 11:30am

2:30pm - 4:00pm

7:00pm - 8:00pm



### **Tuatapere Community Pool**

#### **Prices for Season Pass:**

Family (immediate family in one house) **\$180**

Buddy key (2 x unrelated individuals living in  
separate household not incl. family) **\$180**

Senior Citizens Buddy Ticket (2 x  
unrelated/partnered Snr Cit. living in  
separate or same households) **\$150**

All prices exclude an Access Tag which is  
purchased separately

Access Tag (one-off or refund on return) **\$15**



Like us on Facebook

**Tuatapere Community Pool**

to keep up-to-date or message the page  
for assistance

President: Minessa 027 311 2112

### **TUATAPERE & DISTRICTS LIONS CLUB PROJECT**



#### **SUPER DIRT**

**Bags@\$8.00 ready for your garden**

Super Dirt can be collected from  
Rabco's Yard, Groveburn Road

Phone Shirley or Stephen  
**(03) 226 6817**



### **TUATAPERE COMMUNITY WORKER**



Room 5/69A Orawia Road  
Tuatapere Medical Centre

**Monday, Wednesday, Thursday  
10am to 3pm**

Keri Potter 027 757 5983

Email: [tcworker@xtra.co.nz](mailto:tcworker@xtra.co.nz)

## TUATAPERE COMMUNITY MARKET

Second Saturday of the month. 10am - 1pm  
In the Shed at The Well.

Please text 027 297 4767 to book a \$5 table

## SALVATION ARMY FAMILY STORE TRUCK

The Salvation Army Family Store Truck will come out and collect large amounts of your pre-loved furniture & other household items. This service is free. Please call the store to organise your visit on 03 214 5380



**Family Store**

Donate. Buy. Help.

[familystore.org.nz](http://familystore.org.nz)



## COMMUNITY NOTICEBOARD

Hey, I am a volunteer fire brigade member for our local Tuatapere brigade!

I am on the look out for that someone special to look after our four children aged between 7 and 16 years old (oldest is autistic, which I hope doesn't put anyone off) if the alarm goes off. This is more for through the day or when the husband is away for work. Happy for you to come to mine or I can drop them off.

If you could give me a ring if you are interested - that would be fantastic.

027 4629 527

Thanks again. Loretta Tilby



Tuatapere's own Crafters Collective

## COUNTRY CORNER CRAFTS

**WINTER HOURS 11 - 3PM  
OPEN MOST DAYS**

- Knitwear & sewing
- Jewellery & Bobbin lace
- Woodware
- Jams, pickles, sauces
- Art works & much more
- Looking for a Tuatapere souvenir? "On Natures Edge" always in stock

**ENQUIRIES**

**LOUISE GREBER (03) 668 6001**  
**MAX MALSEN (021) 422 800**  
**LYLA SHERRIFF (03) 226 6187**

New members always welcome.  
Want to volunteer? Let us know!

## PUKEMAORI BOWLING CLUB

19 Sim Street Pukemaori

We welcome friends and new members. Come and have a roll!  
Practice nights **Thursdays 7pm**



Enquiries Phone Ralph Carr 027 3328 672

## KEEN TO GIVE SQUASH A GO?

Enquires please contact:

Rebecca Robertson 027 424 6129



## ORAWIA HALL - BOOTCAMP GROUP

Come along to our bootcamp to improve your fitness, strength and well-being.

Every **Monday, Wednesday & Friday 6am-7am.**

New people are always welcome.

Cost is \$5 per session - pay as you go!

Contact: Kathy on 021 0811 6603 or

Nessa on 021 1165 106

## TUATAPERE ENVELOPES

Envelopes printed with the "Tuatapere on Natures Edge" Logo can be purchased at Country Corner Craft Shop 1A Orawia Road. **Cost \$4.00 per 10**



## SOUTHLAND COMMUNITY LAW CENTRE

Free legal information and advice for the community of Southland. 2nd Floor, Cue Building, 33 Don Street, Invercargill. Phone (03) 214 3180

Freephone: 0800 550 800  
(outside Invercargill city only)



## MONOWAI - 100 YEAR CENTENARY

In May 2025 Monowai will celebrate their 100 year centenary along with the power station

I am looking to find people who have had an association with the village in their younger years and am particularly interested in old photos and stories.

Contact Merrill at [merrill.laurence@gmail.com](mailto:merrill.laurence@gmail.com)  
or call (03) 225 8267



## COMMUNITY NOTICEBOARD

### WESTERN SOUTHLAND GUN CLUB

#### Upcoming Shoots

**10th December** - 10.00am start at the Pukemaori Grounds  
Entry \$60 Eye & Ear protection compulsory & available for purchase at the club. Food available.

**Must bring own ammunition.**

**1st January 2024** - New Years Day Shoot 80 Targets  
10.00am start at the Pukemaori Grounds  
Entry \$60 Eye & Ear protection compulsory & available for purchase at the club. BBQ Food available.

**Must bring own ammunition.**

---

### DR ERIC ELDER BURSARY FUND

Applications for the above Bursary open on the **1st of October 2023**.

The Dr. Elder Bursary is valued at **\$2,000** and is open to all persons wishing to undertake Tertiary Studies for 2024.

Application forms are available from:

The Southland District Council Office  
Otautau  
Phone **0800 732 732**

or email Dale Egerton at  
**[dreldertrust@gmail.com](mailto:dreldertrust@gmail.com)**

Completed application forms can either be emailed to  
**[dreldertrust@gmail.com](mailto:dreldertrust@gmail.com)**  
or posted to:

Mrs. Dale Egerton  
58 Half Mile Road  
Tuatapere. 9620

Applications close on the **8th of December 2023**.

Any enquiries please phone **027 3106 199**

---

### WAI AU COLLIE CLUB

101st Annual Dog Trials

**February 2nd 2024 - Wairaki Station**

Entries from 7:30am til 11am.

All competitors and spectators welcome, and anyone curious to see what its all about!

Great lunch and refreshments available at the main hut (cash only). Prizegiving and raffles/auction at day's end.

J.Gray (Club President)  
025 225 5212

**FRIENDLY REMINDER - THERE IS NO  
WESTERN WANDERER IN JANUARY**  
Notices / Events / Contributions for  
February's Issue need to be sent in by  
**20th of January 2024**

### PADDY'S LUCKY DIPS

I'm Paddy & I've just turned 8.  
I make & sell Lucky Dips along  
with other cool stuff.



Find me at the **Tuatapere Community Market** in The Shed at the Well every second Saturday of the month.

### LOCAL COMMUNITY GROUPS / SPORTS TEAMS

Did you know that it's **free and easy** to  
advertise your local group meeting,  
fundraising event or sporting team/code  
notices in the Western Wanderer!

If you want to share the results of a  
game and/or tournament or celebrate  
the achievements of a team member or  
player - we can print that too!

Send an email to  
**[yourwesternwanderer@gmail.com](mailto:yourwesternwanderer@gmail.com)**  
by the 20th of the month prior & we'll  
also add any event notices to the  
Community Noticeboard  
for the next issue!

**We're Updating Our  
Community Contacts  
Handy Pull-Out  
Reference Guide  
for Local Services,  
Community Groups,  
Sports Clubs, Teams etc.**

We try to include the guide  
twice a year, either in the  
July or August Issue and again  
in the February or March Issue.

**If details for your sport, club and/or  
committee have recently changed, or if  
you want to be included in the pull-out  
(and haven't been previously)  
please let us know!**

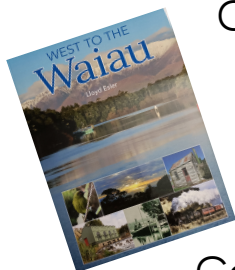
Send an email with the details to:  
**[yourwesternwanderer@gmail.com](mailto:yourwesternwanderer@gmail.com)**

Help others find your community group,  
service, club or sporting code!

**5 Hunterway pups for sale  
4 months old. Plenty of noise  
Please phone Jeffrey on  
(03) 226 6119**

## **COUNTRY CORNER CRAFTS**

Looking for ideas for  
Christmas?



West to the Waiau  
by Lloyd Esler  
Available now for \$45

**Coming Soon!**

"The Life & Times of the Late  
Dr. Eric Elder" for \$35  
(Available from 9th of December)

## **Local Calendars for Sale!**

The perfect Christmas gift  
for family or friends!



2024  
Calendars  
available  
now!

Gorgeous Local Scenes  
**\$15 each**

**Available at  
The Well**

Humpridge Track Office  
Country Corner Crafts

Tuatapere Presby Church Folk  
or contact: Lyla Sherriff - 03 226 6187

Fundraising for the  
Tuatapere Presbyterian Church

## **COMMUNITY NOTICEBOARD**

### **WAI AU STAR RUGBY CLUB - AGM**

To be held at Tuatapere Fire Brigade, Tuatapere  
on Monday 4th December 2023 at 7:30pm.

All welcome. Any enquires please contact  
Kristy Nind on 027 630 9529.

### **TUATAPERE CHRISTMAS PARADE**

**SEE THE BACK PAGE FOR FULL DETAILS!**

We are almost there now, please keep coming  
up with awesome ideas for floats cars trucks  
tractor ANYTHING with wheels for our  
Christmas parade this year!

Let's make this one a really big one.

All enquiries to John Munro 027 412 2925



### **COMMUNITY CHRISTMAS LUNCH**

Book now for your seat at the free community  
Christmas lunch at Tui Base Camp, midday on  
Xmas day.

All welcome but only 40 seats available!

Contact Keri on 027 757 5983

or email: [tcworker@xtra.co.nz](mailto:tcworker@xtra.co.nz)

### **TUATAPERE COMMUNITY SUPPORT WORKER**

A free and confidential service.

Contact Keri if you:

- Want help with filling forms
- Need advice on who to contact
- Require financial or food assistance
- Know someone that requires assistance or  
are concerned about someone's well being
- Want to suggest a community related  
course or activity

**Hours: Mon, Wed, Thu 10am - 3pm**

Cellphone: 027 757 5983

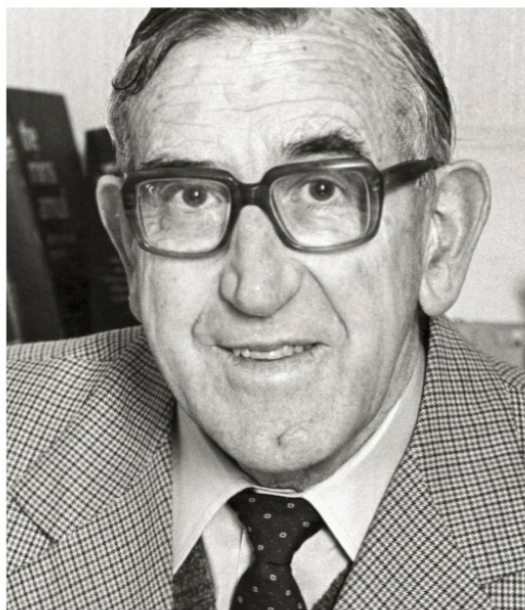
E-mail: [tcworker@xtra.co.nz](mailto:tcworker@xtra.co.nz)

8 Call in to the office at the Medical Centre just  
inside front door 69a Orawia Road, Tuatapere



**YOU ARE INVITED TO  
THE DR ELDER BOOK LAUNCH**

*THE LIFE AND TIMES OF THE LATE  
DR ERIC ELDER*



**WAIAU TOWN & COUNTRY CLUB  
FRIDAY 8TH DECEMBER, 2pm  
*EVERYONE WELCOME***



**Neat Cut**

Phone: Anita Green 027 506 2418  
Tuesday 9-5pm, Thursday 10-8pm, Friday 10-5pm - Appointments are encouraged.



**Anne Horrell, Chairperson**

**Contact: 021 2169 808**

**Email: [altonlea.horrells@xtra.co.nz](mailto:altonlea.horrells@xtra.co.nz)**

Congratulations to Suzi Best and her team for a very successful opening of the Archive Hub. Along with the 'Artists of Southland' exhibition, Market Day at The Well, Carol's Pop-up Shop and the Elections the 13th/14th/15th was a busy, positive time.

Well done to Hauroko Valley Primary and Waiau Area School for great Pet Days. It was lovely to hear of the blessing of the WAS gym refurbishment; such a special asset.

It's great to see that Tui Trappers have established residency of the 'The Promotions' building near The Well.

### Community Board news includes:

- **Community Partnership Applications.** Available Funds \$13,300. At the meeting on 10th October successful applications were received from:
  - **Tui Trappers**
    - Requested \$11,030 Granted \$3,000
  - **Dr Elder Book Project**
    - Requested \$5,000 Granted \$2,000
  - **Pahia Predator Control**
    - Requested \$470 Granted \$470
  - **The Community Worker Trust**
    - Requested \$1,680 Granted \$1,000
  - **Waiau Area School PTA**
    - Requested \$5,000 Granted \$1,000
  - **The Senior Citizens Group**
    - Requested \$1,078 Granted \$1,078
  - **Central & Western Archive**
    - Requested \$3,162 Granted \$1,000
  - **Eastern Bush Community Hall**
    - Requested \$7,565.22 Granted \$1,500
- At the meeting on 7th November the Community Board approved unbudgeted expenditure of \$5,300 (exc GST) for the construction of a half basketball court in Orepuki (to be funded from Hirstfield Reserve pending approval from DOC).

**MOUNTAINS EDGE CABINS MONOWAI**



Hunting, Fishing, Mountain Biking, Kayaking & Tramping Cabin Accommodation

**12 Cabins**  
Double and Single Available  
\$35.00 per person per night

Eftpos available  
Full Kitchen Facilities, Showers, Toilets, Playground & the Tennis Courts right across the road!  
We are 'pet friendly'

[www.mountainedgescabins.com](http://www.mountainedgescabins.com)  
Email: [mountainedgescabins@gmail.com](mailto:mountainedgescabins@gmail.com)  
75 Turbine Drive, Monowai. Ph. 03 225 8267



**MR STEEL**  
TUATAPERE  
PH: 027 276 6816  
MALCOLM

**For all your engineering, steel fabrication and repair needs!**

**PLATE METER SERVICES**  
PASTURE METER READING THAT'S QUICKER AND EASIER, WITH AT THE GATE REPORTS  
TROUGH CLEANING SERVICES

- Specialist in quality pasture meter reading with advanced sensor technology
- Provide 200 measurements per second or 18,500 readings over a single 500m pass
- Provides a fully integrated electronic support system
- Provides a secure web-based storage of information with easy access
- Prompt generated feed wedges for rapid decision making and seasonal comparisons
- Generate reports at the gate, supplying valuable pasture cover data and comparable results every time
- Improve heath & increase animal hydration
- Enhance production & improve water quality
- Reduce bacterial/algae contamination of trough water

**CLEAN TROUGH WATER MEANS IMPROVED LIVESTOCK HEALTH**

Now 2 bikes available for pasture metering



Brett George • P 027 351 3408  
E [platemeterservices@gmail.com](mailto:platemeterservices@gmail.com)



- At the 7th November meeting the Community Board recommended to Council rates and fees for the 2024/25 year. If passed **the Community Board Rate** will increase by 23%. The increase is due to the rise in inflation over the past couple of years. It is also due to the increased mowing cost at Monowai and the requirement for playgrounds (Monowai, Tuatapere, Orepuki) to be brought up to NZ safety standards. Following the death of a wonderful, long- term resident Peter Murdoch who voluntarily mowed Monowai Village a mowing contractor has been employed.
- **Representation Review.** On 7th November discussion took place on the current representation on Community Boards and Council and Community Board and Ward areas. The Local Govt Commission will make decisions prior to the 2025 elections.
- **A Bio Blitz** is being planned for March 2024 where Environment Southland staff will lead and involve our community in an ecological study of the Tuatapere Domain Reserve, observing and recording the presence of flora and fauna.
- **McLeod's Track** (Ferry Rd entrance) has received superb excavation work improving the safety of the track. A well- defined pathway has been installed. The CB is planning the planting of natives in this area to replace the pine trees removed.
- **The ground behind the Squash Courts** cleared of dying trees has been tidied and will be rolled prior to sowing in grass.

I would like to encourage you to make contact with me or any Community Board member if you have concerns or ideas. We will 'do our best'.

Anne Horrell (Chair) **021 2169 808**

Blayne de Vries (Deputy Chair) **027 6317 273**

Wayne Edgerton (Hall Bookings) **021 0251 1631**

Jo Sanford **027 295 0429**

Marilyn Parris **021 0226 0635**

Paula McKenzie **027 4346 777**

Cr Derek Chamberlain **027 4872 199**

Best wishes from all of the Community Board for a safe and enjoyable Christmas period.

Thank you to you all for the things you do which contribute to the health and well- being of our very special part of the world.

**TODD & CO**  
REALTY

*Melanie* - your local salesperson

I am proud to be serving my local area, helping people from all walks of life meet their property goals.

After some great sales so far this year, I have a number of buyers still looking.

If you would consider selling, give me a call!

**Mel Muldrew**

021 068 5262

melanie.m@toddco.nz

**TODDCO.NZ**

William Todd & Co Ltd, Licensed (REAA 2008)



**Choose Local. Choose Melanie.**  
**Serving Southland since 1865.**

**WaterForce**

**Irrigation Systems**

**Pumping & Filtration**

**Effluent Dispersal**

**Water Management**

20 Winton Hedgehope Highway, Winton

03 236 9805 [www.waterforce.co.nz](http://www.waterforce.co.nz)

**0800 4 FORCE (4 36723)**

**DRAKE**  
PLUMBING & DRAINLAYING LTD

C: 0274 247 102

T: 03 225 8652

E: [admin@drakeplumbing.co.nz](mailto:admin@drakeplumbing.co.nz)

**KIERAN DRAKE**  
Certifying Plumber  
& Drainlayer



**HARRY'S  
MACHINES**  
EARTHWORKS  
027 304 3714





\* 13 Tonne Digger \* 5.5 Tonne Digger \* 2.7 Tonne Digger- dry hire or operated  
\* Tip Truck \* Bob Cat \* Augers \* Post Driver \* Tree Saw & Hedge Trimmer

\* Tree Trimming \* Post Driving \* Fencing \* Cleaning of Wintering Sheds \* Site Clearance \* Cartage \* Graveling \* Lane Maintenance \* General Earthworks

For all enquiries and bookings please contact Lance or Alice Harris  
Lance: 027 304 3714  
Alice: 027 270 0363  
Email: lanceharris533@gmail.com  
Check us out on facebook- Harry's Machines

**Shearing**  
magazine  
**Des Williams (editor)**



Tel 07 839 2891 : Mob 0274 833 465  
Email : shearingmag@xtra.co.nz  
Member NZ Guild of Agricultural Journalists and Communicators (Inc)

**LAST SIDE PUBLISHING LTD**  
PO Box 102, Hamilton 3240, New Zealand

**PAUL ANDERSON  
BUILDER**

AVAILABLE FOR ALL YOUR  
BUILDING REQUIREMENTS.

NO JOB TOO SMALL.  
COMPETITIVE RATES.  
REFERENCES AVAILABLE!

**Mobile: 027 890 3602**  
thetakis@outlook.com

## IN & AROUND THE COMMUNITY

Your Community = Your Archive



Central  
& Western  
Archive

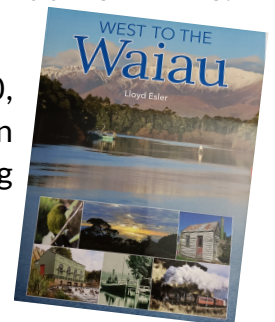
## News from Central & Western Murihiku Southland Archive

**Suzie Best,**  
*Digitising Archivist, Social History Researcher*

The Community Archive Heritage Hub is becoming a busy week place since its official opening last month. We have had over 50 visitors!

If you like history or need Christmas Prezies, we have several books in stock that meet those needs:

Lloyd Esler's latest book  
"West to the Waiau" for just \$40,  
and for the adventurous teens in  
the family, we have the amazing  
Fiordland Fables series for \$29 ea.



If your younger child likes  
sea stories, there is "Jack  
the Whaleboy" also by  
Lloyd Esler,

and finally, we have the PYPER family history which includes the local district Laurie's in it, this is a large hard cover for \$67. These are all to help fundraise for our ongoing costs. Feel free to call in any time we are open to peruse both the book selection and our extensive history resources.

We hosted the Western Southland Forestry Workers Reunion to see the records and photos on the district forestry from early days. And, we have been able to now complete several local history inquiries, one being exactly who was buried and where and when, at the Clifden Cemetery. We were excited to be able to provide local community good guy John O'Brien with this information, as he clears it up and gets the graves properly labelled at last. We had descendants of the Whyte family come in looking for the survey of farmland at Pukemāori, which we provided them a



map of showing their ancestors land. In exchange, they allowed us to digitise their family history and photos, which will soon be featured online. This is exactly what we are here for. If you have any family or district history questions, please just visit or email.

Don't forget we not only have heritage collections including previous Tūātapere and Waiau newspapers from history, plus all the local schools records, we also cater to the wider community, providing access to FREE Wi-Fi, public use computers, copying and printing facilities, also digital transfer & storage equipment, laminating, binding and more. All we ask is a koha for costs. Our facilities also have a full kitchen, hot drink making and a comfy couch, plus tables and chairs. See you soon!

#### **PUBLIC OPEN HOURS:**

Every Tues/Thurs 10:30am - 4:30pm

Each 1st & 3rd Fri 1:30pm - 4:30pm

And first Saturday of each month from 1:30 - 4:30pm

If you cannot come at these times or wish to book in a large group, please contact the Manager, Suzie Best on: 027 211 4675 or email: CentralAndWesternArchive@gmail.com



*Looking for a Christmas Gift Idea?*

## **Doctor Elder Books on Sale!**

**Available from 9th December**

**Copies available from ...**

- **Boundary Creek Gallery, Main street**
- **Country Corner Crafts, Main Street**

**Don't miss out! Get your copy!**

## **WAIAU VALLEY SHEARING LTD**



**Simon de Vries**

**Julie Heaps**

**027 840 9867**

**03 226 6212**

### **EGERTON CONTRACTING**

**for all your cartage needs!**

**Bulk Tip Unit**

**Tractor available with soft hands for  
loading of Baleage etc**

**ALSO Supply available of  
Wood Chips / Sawdust**

**Beach but-end firewood loads**

**PH: EAMON 027 371 8674**

**SOUTHLIFE  
Community  
CHURCH**

*Steve & Sharon*  
are Pastors  
and we are an area church



We believe in  
Community and  
endeavour to  
show this the  
best we can by  
the way we  
care and serve!



We warmly  
invite you to  
come along to  
one of our  
services.  
It would be great  
to see you

**Sunday Service**  
10am Truro St, Orepuki

Steve & Sharon Calder  
027 321-1108



## SPOT

**Suicide Prevention & Outreach Tuatapere**



EST. 2021  
SPOT

We were proud to support the Agriconnect evening at the Well on the 24th of November. A great community evening.

Keep an eye out for more spot initiatives in the New Year.

### THE BUDDY SYSTEM

One of the new initiatives SPOT is looking to roll out, is the "Buddy System." A system where individuals buddy up to check in on each other.

If you are interested in becoming a buddy, Please email [tuataperespot@gmail.com](mailto:tuataperespot@gmail.com) for more information.



HAVE YOU CHECKED ON A MATE TODAY?



## TUATAPERE COMMUNITY FOOD DRIVE 2023

S.P.O.T in conjunction with the Tuatapere Community worker support trust invites our local community and surrounding areas to join in another FOOD DRIVE for 2023

On the **15th of December at 6:30pm**, we will be traveling around the Tuatapere Township collecting non-perishables food items for our Community Worker to distribute to families over the Christmas period.

If you could please have these items clearly visible by your letter box or bring them out when you hear us coming near for us to collect and to say thank you.

We will have a space at our local Four Square supermarket to place items in if you find you may not be home, also a drop off point at Hauroko Valley Primary & Waiau Area School before the 13th December.

**S.P.O.T WOULD LIKE TO THANK YOU ALL & MERRY XMAS!**



For all your fencing requirements

## WESTERN FENCING

SHEEP | DAIRY | DEER



Call BEVAN 0277 413 213



## DAGWOOD DAGGING

Available now to all new and existing customers for all your crutching requirements.

3 Stand or Single trailer available  
7 days a week, wet or dry.



No job too big or too small.

Competitive rates

**Jeff Chambers**

027 3042 241

## Waiau Town & Country Club

<https://www.waiautownandcountryclub.co.nz>

Phone: 03 2266 489 | Address: 41 King St Tuatapere

[waiautcc@gmail.com](mailto:waiautcc@gmail.com) | [facebook.com/waiautcc](https://www.facebook.com/waiautcc)



Courtesy Van Available

### Club Opening Hours

Mon - Thurs 4pm till close.

Fri 3pm - close.

Sat Noon - close.

Sun 3pm - close.

**New Members Always Welcome!**

Just pop in or call the club for a nomination membership form.  
Annual membership 2022/23 is \$50 p/p or \$30 p/p for pensioners.

**Bistro Hours**

**Thursday - Sunday  
5 - 9pm\***



(\*Bistro may close from 7:30pm onwards if not required)

**We are the perfect place for your functions/birthdays!**

Keep an eye on our Facebook Page for more details on upcoming events ...

We can cater! Call us to discuss options!  
03 22 66 489

**Waiau Town & Country Club  
Members and their Invited Guests**

## Hens for Sale \$13 each

18 month old Brown Shavers

Ex-commercial layers from Te Waewae Eggs  
True Southland Free-range

The next lot of chickens available will be available at the beginning of June, and every two months after that.

Ph Rob 03 226 6805 or 022 044 2086



## TUATAPER HANDYMAN SERVICES

**Barry Bennett**  
**(03) 226 6730**

- **Painting - Interior/Exterior**
- **Waterblasting**
- **Spider & Fly Spraying**
- **General Repair Work**
- **Lawnmowing**
- **Weed Spraying**



## WANTED TO BUY

Possum Fur, Hard deer,  
Antler, Deer Velvet.

Phone Leith 027 496 3721

## Want to know more about the Hump Ridge Great Walk?

For information or to book/walk the Tuatapere Hump Ridge Track – please contact the Track Operations Office directly via [www.humpridgetrack.co.nz](http://www.humpridgetrack.co.nz)

**Project Webpage:** Stay informed with the facts and news via [www.doc.govt.nz/hump-ridge-great-walk-project](http://www.doc.govt.nz/hump-ridge-great-walk-project)

**Project Email:** Get in touch to ask questions or to be added to the newsletter distribution list via email: [HumpRidgeGWP@doc.govt.nz](mailto:HumpRidgeGWP@doc.govt.nz)

**Media Enquiries:** please direct to [media@doc.govt.nz](mailto:media@doc.govt.nz)



**027 252 7933**

- ✓ Renovations
- ✓ Extensions
- ✓ New Builds
- ✓ Sheds/Farm buildings
- ✓ Decks
- ✓ Pre-purchase house Inspections

*Call us for any building requirements*

Ph 027 252 7933 email: [aaroncbltd@gmail.com](mailto:aaroncbltd@gmail.com)

## FORDE WINDERS SHEARING LTD

Available for all new and existing clients

For all your shearing and  
crutching requirements

Please phone

Darin Forde 027 229 7760

Jeremy Winders 027 231 4299

**McMAHON**    
**design studio**  
*Experts in Design & Print Solutions*

### Our Services

- **GRAPHIC DESIGN SERVICES**  
INCLUDING: LOGO DESIGN & BRANDING PACKAGES, PHOTO EDITING  
ADVERTISING DESIGN FOR PRINT OR DIGITAL & EMAIL SIGNATURES
- **OFFICE & WORKSHOP STATIONERY**  
INCLUDING: CUSTOM PRESENTATION/DISPLAY ITEMS & BRANDED GIFTWARE
- **WEDDING & EVENT STATIONERY & SIGNAGE**
- **PERSONAL STATIONERY, GIFT ITEMS & PACKAGING**
- **CERTIFICATES - PADS - CALENDARS - BOOKLETS**  
**NEWSLETTERS - STICKERS - LABELS - VINYL DECALS**

Contact us to book your design consult today.

*We'd love to learn about your project & help your vision come to life.*

*We are conveniently located at*

**9 Cumnock Street, Wallacetown**

**P: 027 242 8109 E: [mcmahondesign@outlook.com](mailto:mcmahondesign@outlook.com)**

**OPENING HOURS:**

**Mon & Fri: 9.30am - 2.30pm Tues - Thurs: 9.30am - 4.00pm**



# K.J. Sutherland Contracting Bobcat T190

With attachments: Landscape Rake,  
Augers and Trencher

Suitable for all landscaping, shed and yard  
maintenance

Muck-spreader and tip trailer available



**PHONE KEVIN**  
**027 367 934 / (03) 225 5716**



**WAIU AREA SCHOOL**  
Year 1-13 Education

*Live to LEARN, LEARN to Live*

## Kia ora Western Wanderer Readers!

2023 has been another successful and fun year at WAS. As principal, I thoroughly enjoy seeing, in action, **positive changes** in people. As a member of the BOT, it is very pleasing to see worthwhile **systems and procedures** sustained. WAS is certainly a fantastic place to learn and grow in!

Please continue to check out our FB page and read our newsletters. Anytime you would like to be shown around WAS or simply come in for a chat - please do so - you're always welcome. Here are some pics to remind us of how cool WAS students are!



**MILLARS**

- PLUMBING
- GAS FITTING
- DRAINLAYING
- LICENSED BUILDER

Master Plumbers  
Established Excellence

Ph 027 4340 705 or 03 225 8567



We specialise in:

**Resource consents**

**Farm environmental plans**

**Policy advice**

**DOC concessions**

**Landscape plans & assessment**

We take care of the paperwork,  
so you can do what you do best!

Sonya: 027 5050 077

Rebecca: 027 4246 129

[www.slwp.co.nz](http://www.slwp.co.nz)

Locally owned & operated



WAS is also very proud of our facilities and environment. Thankfully, our gym has been completed along with our new deck in the Primary School area. There are a few more projects happening - I'll let you know later.



Thank you again for all your support towards Waiau Area School. If I don't see you -  
**Merry Christmas & Happy New Year. PB.**

## For Landscaping, Land Maintenance, Gravel Supply & Cartage

**GRADES OF  
 CRUSHED & SCREENED GRAVELS,  
 ROOTRAKING, FARM TRACKS,  
 DAIRY LANES**



**ELEVATOR SCRAPER,  
 BOBCAT & ATTACHMENTS,  
 LANDSCAPING,  
 TRENCHING AUGERS**

### Supplies of Gravel Ex Waiau River

River Run Screened Grades  
 Concrete Gravel Pea Gravel  
 Rejects for soak holes Crushed - AP30 & AP65  
 Pebbles for Sheep and Cattle yards & calf sheds  
 Fines suitable for cow lane capping

**K J SUTHERLAND  
 GRAVELLING &  
 AGRICULTURAL CONTRACTOR  
 2475 OHAI-CLIFDEN H/WAY  
 ORAWIA RD2 OTAUTAU 9682**

**Ph 0274 367 934**

# Alex Reid CONTRACTING

**Paddock Cultivation from  
Ploughing to Sowing  
Dry Hire available  
Aerating  
Direct Drilling  
Ridging  
Mulching**



## **Dairy Lane Maintenance**

Tip Trailers • Vibrating Roller • 2 Tip Trucks

## **Sheep Conveyor**

Drenching, Vaccination etc • 3 way draft

## **Large Skid Steer for calf shed cleaning, loading Muck Spreaders etc**

4 Muck Spreaders • 16,000 litre Slurry Tanker  
Pond Stirrer • Umbilical Slurry System



**Rural Contractors**  
NEW ZEALAND

**PHONE ALEX  
0212775308 CELL  
03 2255377 HOME**

## LOCAL HISTORY - SPECIAL FEATURE

*Historic Notes Contributed by George Charlton*

*The following article was published in  
The Southland Times (approximately early 1980s)*

### ***In remembrance of the Opening Day of the Tuatapere Bowling Club (circa 1930)***

*The Tuatapere Bowling Club's present location on  
Birch Street is the original site.*

*Continued from last month's issue ...*

## **The Sports Trust**

Referring to the fact that financial assistance had been sought from the Sports Trust Mr Scandrett said that that was nothing to be ashamed of. Other clubs better situated than the Tuatapere Club had had recourse to similar action and, after all, the Sports Trust was established for the very purpose of assisting clubs and sport.

He advised the Tuatapere bowlers to get in touch with town and other bowlers and arrange visits. They would never regret playing with others particularly if their opponents were superior players. There were plenty of adjacent clubs in the district and they should be able to arrange some very enjoyable games together. He wished the club every success and hoped members would get enjoyment out of the game (applause). "When Mr Stevenson, Mr Thompson and myself visited Tuatapere 12 months ago we said we would be back here at the 'opening'", said Mr Meredith "and we certainly are pleased to be here today, speaking on behalf of the Sports Trust." Mr Meredith said that "that body was always willing to assist." All sports came under their review and he could say that bowling clubs had not had a great deal from the Trust.

He was pleased the way the money had been spent on construction of the Green and now that a playing area was available he hoped the



residents would rally round and help the club along. On behalf of the Sports Trust he wished the club future prosperity and a successful season.

## First Toucher

The President then called upon Mr Scandrett to officially declare the Green open for play. Mr Scandrett thanked the club for the honour and called upon the wife of the Vice-President (Dr Dodds) to roll the first Jack and the wife of the President to roll the first Bowl. This ceremony was performed perfectly amid cheering.

Mrs Charlton succeeded with a traditional Toucher over 30 rinks. Then all participated in games relays, it being necessary to cope with the large representation of bowlers during the afternoon.

All present were guests of the President (Mr Charlton) at afternoon tea. Mr Scandrett later returned thanks and also thanked the ladies for the part they had played in making the afternoon such a successful one.

Considering all the circumstances the Green played splendidly and evoked praiseworthy comments from visiting bowlers. A red letter day in the sporting history of Tuatapere ended with cheers for the club, the ladies and the band and reciprocal cheers for the visitors.

*This concludes George Charlton's notes on the historic Opening Day of the Tuatapere Bowling Club (circa 1930). Thanks for sharing George!*

We are always looking for people who would like to provide a short article/piece of reading for each monthly issue.

It doesn't have to be every month either - you could write a one-off piece or something every other issue if you would prefer! Let's chat!

Email us: [yourwesternwanderer@gmail.com](mailto:yourwesternwanderer@gmail.com)

# Tui Base Camp

★ ★ ★



**Open from  
8:00am  
every day!**



*Kitchen open until at least 7.30pm*

**COME IN & CHECK OUT OUR SPECIALS**

### Upcoming Events

Xmas Day Community Lunch 25th Dec – Bookings through Kerry Potter

New Years Eve – Karaoke and Live Music

New Years Day Night – Live Music

### "Work/Family/Team Xmas Functions"

Contact us to book in your dates/get a quote

Ask for one of our Coffee Cards with your next Amore Coffee (Dine in or T/A)

Pre-order your morning tea and lunches by calling **(03) 226 6250** and we can have it ready for you to pick up when it suits you.

**Don't forget we have a mini-van!**

Contact us to organise a night out at Tui Base Camp (pick-up and drop-off). Enquires to **James 027 837 3521**

**For all of your dine in and takeaway requirements including:**

- In-house roasted Amore Coffee
- In-house made pies, sausage rolls, cheese rolls
- Range of breakfast options
- Packed lunches
- Catering

**Phone: (03) 226 6250**

[www.tuibasecamp.co.nz](http://www.tuibasecamp.co.nz)



Tui Base Camp



**Keep an eye on our Facebook Page for our latest updates!**





**Tui Vodka Soda**  
(ex bourbon) 7% 12pk  
can range  
**\$23.99 EACH**

**Woodstock** (incl zero)  
7% 250ml 12pk cans  
**\$27.99 EACH**

**Smirnoff Double Black Guarana**  
(inc zero) 7% 250ml 12pk cans  
**\$26.99 EACH**

**Long White**  
7% 240ml 12pk cans  
**\$27.99 EACH**

**Smirnoff Soda**  
330ml 10pk can range  
**\$23.99 EACH**

**Absolut** 1L  
**\$48.99 EACH**

**Gordon's Pink / Orange Sicilian Lemon** 700mls  
**\$43.99 EACH**

**Larios Original Canadian Club**  
(incl spiced) 1Ltrs  
**\$44.99 EACH**

**Jim Beam** 1.125ml  
**\$47.99 EACH**

**Johnnie Walker Red** 1L  
**\$49.99 EACH**

**Seagers** (incl lime)  
**\$42.99 EACH**

**Jameson** 1L  
**\$59.99 EACH**

**Jack Daniel's Jagermeister** 1Ltrs  
**\$59.99 EACH**

**Cody's**  
7% 250ml 18pk cans  
**\$39.99 EACH**

**JB** 1.75ltr  
**\$79.99 EACH**



Lindaue  
Classic  
range

**Heineken**  
12pk bottles

**\$24.99**  
EACH

**\$22.99**  
EACH

NEW  
12  
Heineken  
SILVER

**Heineken Silver**  
12pk 330ml bottles

**Heineken**  
12pk bottles

**\$24.99**  
EACH

**Corona**  
18pk Bottles

**\$44.99**  
EACH

**Heineken**  
24pk bottles

**Find your nearest store at  
[www.THIRSTYLiquor.co.nz](http://www.THIRSTYLiquor.co.nz)**

Promotion period between 1/12/2023 to 31/12/2023. While stocks last. Promotion only available at participating stores. Please contact your local store to confirm whether they are participating in the promotion and check the pricing in-store prior to purchase. Online pricing will vary.





# BARRETT *Ag* LTD

**FULL SILAGE AND BALEAGE SERVICE**



**ALL CULTIVATION  
INCLUDING DIRECT DRILL  
AND STRIP TILLING - PRECISION PLANTING**



**EXCAVATION  
20 TONNE DIGGER/ GRADER  
D85 BULLDOZER/ ROLLER  
TIP TRUCKS AND TRAILERS**



**Barrett Ag Ltd  
Ph: Kahu- 027 5183 448  
E: [barrettagltd@gmail.com](mailto:barrettagltd@gmail.com)  
FB: Barrett Ag**







**BEN MCMASTER  
BUILDING**

Ph: 027 202 7955  
benmcmaster@live.com

- Licensed Building Practitioner
- Sheds, renovations & new homes
- Based in Western Southland

*You dream it, we'll build it*



Rural Lifestyle Residential  
**For all your Shearing Services.**

**No mob too big  
No mob too small  
We do it all!**

**Contact Ricky Skipper to book in now  
027 351 2620**

**Specialising in**  
Dairy Conversions  
Rural Fencing  
Post & Rail

**H Gill Fencing,**  
Eastern Bush  
Phone 021 225 5489  
After Hours 03 225 5488  
Email hamish@hgillfencing.co.nz





office@acceleratephysio.co.nz  
60 Deveron Street, Invercargill  
(off street parking)

**0800 291 475**

Accelerate is a gentle form of exercise, effective in providing long term solutions after an injury, especially low back pain.







**Joel Barnes**  
BHPT, BExSci

**Andrea Robertson**  
BHPT, PG Cert ACUP

**Andrea Murray**  
Dip PHYT Dip M.T.

Find us on  facebook
[www.acceleratephysio.co.nz](http://www.acceleratephysio.co.nz)




**KIA ORA, NI HAO, KAMUSTA**

Western Wanderer Readers

We've reached December and that means the countdown to the Term and the Year is near. Firstly, we would like to acknowledge the numerous valuable contributions Nathan has made while serving on our School Board of Trustees. Thank you for supporting the Health & Safety and Home & School portfolios with your diligence and relevant questioning in the pursuit of excellence.

We've been Swimming at Tuatapere Community Pool as part of our Health and Physical Education programme. We are impressed with our tamariki and their progress and achievements in this short space of time. Thanks to Brittney for Coaching our learners in floating, streamlining, freestyle, backstroke, breaststroke, and water safety. We are incredibly grateful to the Syd Slee Charitable Trust for supporting our learners to swim.



Earlier in the term Boe and Louie represented Hauroko Valley Primary and Western Tennis at the Southland Primary School Tennis Championships. There were challenging rallies and some impressive personal bests from both boys. We are proud of you! This Term two teams headed to Riverton for the Western Southland Festival of Golf. There was a field of 31 teams. Our Year 5&6 team with Connor, Maddi, Isaac, and Mason was 4th, while our Year 6-8 team was 17th with Jonty, Louie, Tomas, and Katie. Awesome chips, putts, and drives! Our younger team headed to Drummond's Golf Course for the Southland Primary School Golf Championships.



## HAUROKO HAPPENINGS

We have 3 teams training for the Southland 4x4 Adventure Race, thanks to Nessa, Jayne, and Kate P coaching. This is the first time we have taken up this opportunity, for our Year 7&8 students. Superb endurance, determination, and navigation have been shown by Oliver, George, Daniel, Cormac, Jake, Sienna, James, and George, and also Lucy, Sam, Tomas, and Elly. Four teams across our year levels, actively competed in the Western Southland Touch Modules at Otautau each Monday. Fabulous teamwork was shown in the comp. Thanks to our Coaches and Managers for your support.

Thank You to our Rugby Coaches Robert, Chris and Richard, for supporting our Year 7&8 boys and girls' skill development in preparation for the Jonty Carran Tackle 10's Tournament. It is a fabulous collaboration with our students joining Otautau Primary School. Superb training and commitment by all players including Libby, Sienna, Lucy, Lily, Elly, Katie, Jake, Oliver, James, Daniel, Sam, Tomas, Hugo, George, and Cormac.

Our Year 4-6's head into Rugby Park, Invercargill for the Mitre 10 Tough Kids. It's loads of fun with movement activities navigating a challenging obstacle course. The Year 5&6's are off to Borland Lodge for Education Outside The Classroom, which is always a highlight. It is awesome being outdoors and being physically active!



To conclude our year we return to our uniquely Hauroko Valley Carols in the Caves. This is a special occasion and one we enjoy sharing with our families and friends. This year we are showcasing our talented drummers - Hadlee, Jackson, and Jonty. We are also excited to have a Highland Fling collaboration thanks to Teri for supporting our Highland Dancers including Eve, Aoife, Della, Layla, Caitlin, Lola, Aydee, Ilyssa, Tori, and Libby. THANKS for your support over the year. We know it takes a village to raise a child, and there are so many wonderful people who contribute to our community of learners. Ngā mihi o te wā/Seasons Greetings from Julia on behalf of the Hauroko Valley Primary School, BOT, Staff and Students.



## Registered **ELECTRICIAN**

For all electrical work  
*No job to small*  
A/Hours service available


**Jay Brownlee**  
8 Carlyle Street, Tuatapere 9620  
A/H 03 226 6673  
Mob 027 4965 863  
sparkieintuatapere@gmail.com

For all your Accounting and Tax Solutions

Ask for Janice or Trevor England

 **03 2266110**

Aparima Accounting Ltd  
57 Main Road Tuatapere



## CANTERBURY CARS

### **4WD** Specialists

For all your vehicle requirements

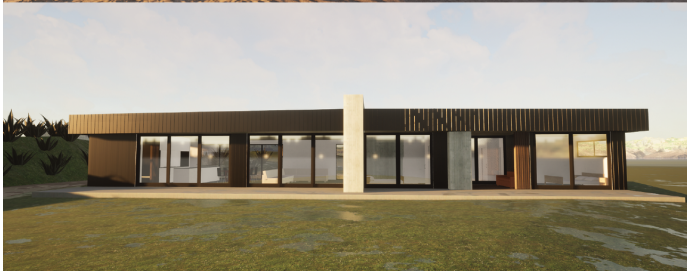
Cars, utes, 4WDs, vans

Finance available

Contact: Murray Dowling  
027 556 2655

Visit our website  
[www.canterburycars4x4.co.nz](http://www.canterburycars4x4.co.nz)

# BAUHAUS



## ARCHITECTURAL DESIGN SERVICES

- SITE FEASIBILITY STUDIES
- CONCEPT DESIGNS
- FULL WORKING DRAWINGS
- RENOVATIONS AND EXTENSIONS
- SUBDIVISIONS
- BUILDING CONSENTS
- RESOURCE CONSENTS

0204 1288 082 // [WWW.BAUHAUSNZ.COM](http://WWW.BAUHAUSNZ.COM) // [HELLO@BAUHAUSNZ.COM](mailto:HELLO@BAUHAUSNZ.COM)



## Ice cream & Milkshake Parlour

16 Orawia Road  
8am - 4:00pm every day

Freshly baked Pies,  
Sausage Rolls, Cheese Rolls  
And delicious baking from Scones and Muffins  
to Gluten Free Cakes and Sweet Treats  
**BUT THERE'S MORE**

We are definitely much more than an Ice Cream Parlour, Cafe and great place to relax and enjoy good food.  
We are also a warm and intimate setting for Meetings, Dinners and Functions, Birthdays (children & adult) and Weddings. We can cater for your Family Gatherings Any special occasions

Need a quiet place to hold your meeting - try us.

Cafe is big enough to have an intimate Wedding (we can even supply The Celebrant), or an after funeral function.

If it's a breakfast meeting or gathering Just give us a call. We can provide the lovely venue and food of your choice.

Just give us a call on  
**027 247 2524 or 027 297 4767**



*Lynley McKerrow*

**Celebrant**  
Funeral and Marriage

P: 0272 974 767  
E: [nanamac60@xtra.co.nz](mailto:nanamac60@xtra.co.nz)  
*with care - with love - with dignity*

## WESTERN ELECTRICAL

2008 LTD

Electrical Solutions

Domestic | Industrial | Commercial

**Quality Service at Competitive Prices**

- New Builds, Rewiring & Alterations
- Dairy Shed, Farm & Industrial Maintenance
- Hotwater Element Replacement
- A/H Call Out Service Provided



**Ph 03 225 8974 / 027 439 3787**

**Fax 03 225 8973**





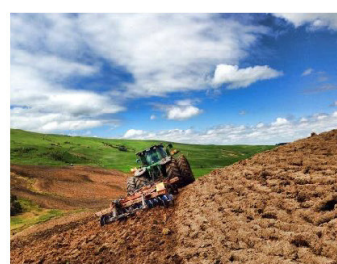
**Rabco Ag Ltd** – 021 362 766 – [admin@rabco.nz](mailto:admin@rabco.nz)  
Agricultural Contracting Specialists - Western Southland



**Full silage  
& baling  
service**



**Cultivation – including Direct Drill & Precision Drill**



**Effluent – Excavators - Hedgetrimming**





*Happy*  
**HOLIDAYS**





## Recipe

*You'll love this recipe for New Potato Salad with Beans and Pesto, perfect for those potatoes you planted to be ready in time for Christmas!*

### Ingredients

- 750g New potatoes
- ½ Red onion, sliced thinly
- 150g Beans, blanched
- 150g Feta, crumbled (optional)
- ½ cup Toasted slivered almonds or pine nuts
- 1 Tbsp Lemon zest
- ½ cup Basil leaves to garnish

### Dressing

- ½ cup Pesto
- 2 Tbspn Lemon juice

### Method

Place the potatoes into a large pot of salted water. Bring it simmer for 10-15 minutes until a knife will easily insert into the potatoes. Remove from stove top and drain.

Into a large bowl, place the cooled potatoes with the sliced onion, beans, feta (if using), most of the almonds or pine nuts and zest.

To make the dressing, in a small bowl, combine the pesto and lemon juice. Pour dressing over the salad and gently combine.

Serve with the remaining nuts and a sprinkle of basil leaves on top.



## Tuatapere Freight

LOCALLY OWNED & OPERATED

RUNS MONDAY TO FRIDAY  
WEEKENDS BY ARRANGEMENT

**Phone Brandon**

027 436 4360



### Deb's Sewing & Repair Service

mending to making  
and everything in between

**Got a tricky job? Just ask!**

Call or text **021 030 5667**



GOOD - CHEAP - FAST but you can only pick two

## REVITALIZE

MUSIC FESTIVAL 2024

2ND, 3RD, 4TH

JAN



**RETURNING TO YOUR  
NEIGHBOURHOOD**

www.REVITALIZE.nz

**EARLYBIRD PRICE ENDS**  
ONCE THE LINEUP HAS BEEN FINALISED

PURCHASE NOW & SAVE

2576 CLIFDEN-BLACKMOUNT ROAD  
MANGAPIRI DOWNS ORGANIC STUDFARM®



# WAIAU HEALTH TRUST – December 2023

69a Orawia Road, Tuatapere. Ph: (03) 226 6123

Monday to Friday 8:30am - 4:30pm

Approved Registered ACC Provider

## Tuatapere Medical Centre

### Christmas / New Year's Clinic Hours:

Please make sure you contact the Medical Centre well ahead of time for any repeat medications required during the holiday period.

22/12/23	9:00am - 12:00pm
27/12/23	9:00am - 12:30pm & 1:30pm - 4:30pm
28/12/23	9:00am - 12:30pm & 1:30pm - 4:30pm
29/12/23	9:00am - 12:30pm
3/01/24	Re-open and back to normal hours 9:00am - 12:30pm & 1:30pm - 4:30pm

### Staff Changes:

NP Sheryl Eden is finishing with Tuatapere Medical on 5 December 2023. I would like to thank Sheryl for her 3 years of service of 2 days per wee. Sheryl has always been very committed to her patients, our practice and dedicating so much time to our After-Hours service.

With practitioner hours reducing, this means a much higher workload for NP Amanda McCracken. It is very important to book any appointment requirements with Amanda as far in advance as possible. There is going to be a longer wait in many instances, we do always keep appointments available for on the day urgent care - please call the morning of to secure a time slot.

Please be assured I am working tirelessly to secure another practitioner; it is a huge understatement to say this is difficult. Skilled healthcare professionals are very hard to come by. We also have RN Olivia going on maternity leave on 20 December 2023. This is going to mean reduced nurse availability. I am working on filling this gap also.

### After-Hours Care:

*With the loss of Cheryl and Olivia (both working in the after-hours service) we are going to be stretched to offer the 24/7 care that we currently provide. Tuatapere Medical will continue to offer an after-hours service and cover as many hours as possible. If you are unwell and require medical care or advice outside of our normal business hours, call (03) 2266123 - you will automatically be connected to our after-hours triage service. The qualified person will discuss your concerns and advise you of the process to be followed. If deemed that you need care, they will contact our practitioner who will then contact you direct.*

### Prescriptions

We now have an electronic prescription system. This means your prescription goes directly from our computer to your nominated pharmacy when it has been processed. Please be assured we will do our best to ensure your medication will be sent to your requested pharmacy or depot (eg: Health & Gift Shop), however please bear with us while we all make this transition. If the text you receive is confusing in any way, please contact your pharmacy to confirm details.

### Homebased Post Birth Maternity Care:

If you are pregnant or a new mum these services would be of great benefit. This care is available for you, we assist with anything for yourself or your new baby in your home at a time that works for both our Maternity support staff and you. Please contact me to discuss this service.

**Waiau Health Staff and Management would like to wish you all, our valued patients/clients a very Merry Christmas and a Happy New Year. We do and will continue to deliver you all the best possible health outcomes.**

Should you have any questions or concerns regarding any Waiau Health Trust matters, I look forward to hearing from you.

**Jo Sanford** (Manager)  
Cell: 027 295 0429



**Agricultural Contractors servicing Western Southland and beyond.**

**BALAGE - SILAGE - GROUNDWORK - FEED TRADING**  
**Nigel 021 226 6156 / [fowlecontracting@gmail.com](mailto:fowlecontracting@gmail.com)**





## Tim and Superior go the extra mile

Are you frustrated with the lack of service from your local fertiliser consultant, peddling the same advice year after year regardless of your production outcomes, environment and sustainability?

Give **Tim Adcock** of Superior Fertiliser Specialists a call. He will bring a whole new meaning to service and client/advisor relationships.

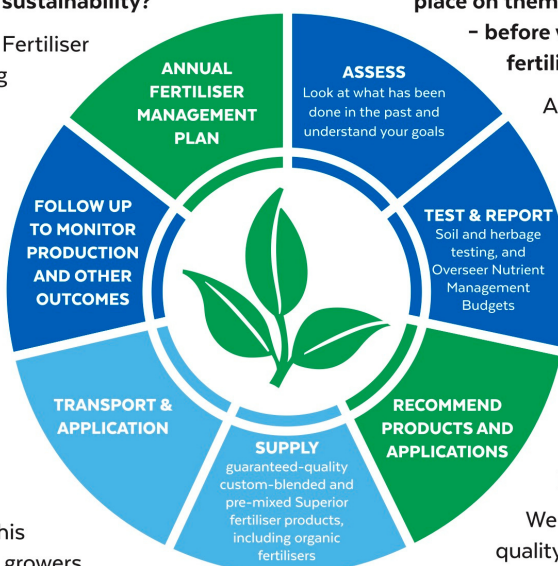
Tim is a key member of the highly skilled Superior team totally committed to helping you develop healthier, more productive soils and plants.

We form a specialist fertiliser company that provides high quality advice and products at competitive prices. We have been doing this for South Island farmers and growers for just on 20 years.

Superior promotes a total soil care package. First, we get to understand the make-up, nutrient status and health of your soils, the demands you are going to place on them, and your production goals – before we apply one kilogram of fertiliser.

A comprehensive regime of vigorous soil tests will be undertaken and the results will provide the basis of a Superior Fertiliser Management Plan customised for your unique situation. This will complement your farm's Environmental Plan and provide the blueprint for an ongoing annual fertiliser programme.

We then supply guaranteed-quality solid fertiliser for your pasture and crops, monitor production and other outcomes, and update your Plans as required.



It's free to talk so don't hesitate to give Tim a call.  
Phone 021 418 224



**Tim Adcock**  
Fertiliser Advisor  
Otago/Southland  
021 418 224  
tim@superior.net.nz

 FERTILISER SPECIALISTS  
**SUPERIOR**  
www.superior.net.nz

# TUATAPER SERVICE STATION

20 ORAWIA ROAD  
PHONE: 03 2266475

Wishing you all a  
Very Merry Christmas  
and a  
Happy New Year



## HYDRAULIC FITTINGS

WE NOW STOCK A GOOD RANGE  
OF CRIMP ON HYDRAULIC  
FITTINGS FOR AGRICULTURE  
HOSES WE CAN ALSO REPAIR  
OR MAKE UP NEW HOSES

## GIFT CARDS

Having trouble finding that perfect gift for  
Christmas get them an MTA Gift Card

Any dollar value can be purchased



COME IN FOR A  
BROWSE  
AND CHECK OUT  
ALL THOSE GIFT  
IDEAS WE HAVE IN  
STORE

## XMAS HOURS

Saturday 23<sup>rd</sup> Dec to Tuesday 26<sup>th</sup> Dec - Closed

Wednesday 27<sup>th</sup> Dec to Friday 29<sup>th</sup> Dec

10.00am – 3.00pm Workshop closed these days

Saturday 30<sup>th</sup> Dec to Tuesday 2<sup>nd</sup> Jan – Closed

Wednesday 3<sup>rd</sup> Jan to Friday Jan 5<sup>th</sup>

10.00am to 3.00pm Workshop closed these days

Back to normal hours Monday 8<sup>th</sup> January Mon-Fri 8.00am – 5.00pm





*It's almost time!*

# TUATAPERE CHRISTMAS PARADE

in the Tuatapere Domain  
**Saturday 23rd December 2023**  
from 6:30pm onwards

*We've got*

- ★ BIG Bouncy castle
- ★ Sausage Sizzle
- ★ Pony rides
- ★ Good Mood Food & great Coffee
- ★ Face Painting
- ★ Donut man
- ★ Chocolate Wheel
- ★ Music

*There may be more on the night!  
Who knows?*

*Raissa Hewton & Gemma Bennett are organising some games -  
please let them know if you can help!*

🎁 Children's games   🎁 Lolly scramble   🎁 Making Paper Angels

This year, instead of presents, Ice cream in a tub!

Santa's Grotto for taking pics on Santa's knee

And of course, Santa himself!



**Come down, make an evening of it, bring a blanket and  
something to eat, play some games, stay a while!**

## PARADE PARTICIPANTS

Please keep coming up with awesome ideas for floats!  
Cars, trucks, tractors - ANYTHING with wheels for our Christmas parade!!

**Gather out at DT Kings Yard and on the tarseal along in front of the  
houses on the DT King side of the road.**

**Be ready to go at 7pm**