



WESTERN Wanderer

Tuatapere | Clifden | Orawia | Blackmount | Monowai | Colac Bay | Orepuki

Cover Photo: From the Tui Trails in the Domain | Sent in by: Brendon Lewis

Issue 262

At a glance ... what events are on this month?

NOVEMBER 2023

MONDAY	TUESDAY	WEDNESDAY	THURSDAY	FRIDAY	SATURDAY	SUNDAY
		1	2	3	4 Tui Trappers Working Bee 10am - 1pm Guy Fawkes WTCC	5
6	7	8	9	10 Te Anau Motorama Cruise Night	11 Tuatapere Community Market, The Shed at The Well 10am-1pm Te Anau Motorama Show Day	12
13	14	15	16	17 Nicky Moran Live Tour Tui Base Camp 7pm	18	19 Housie! 2pm WTCC
20 Deadline for WW NEXT Issue content	21	22 Tuatapere Amenities Trust AGM WTCC, 7pm	23	24 Agriconnect Event Invitation to all rural workers, families & associates The Shed, 6pm 14 Orawia Rd, Tuatapere	25	26
27	28	29	30	1	2 Live Music Night Southern Bandits Tui Base Camp	3
Coming up ...	Waiau Star Rugby Club AGM Monday 4 December Tui Base Camp 7:30pm	The Life & Times of the Late Dr Eric Elder Book Launch 2pm, WTCC Friday 8 December ALL WELCOME Dr Elder Bursary Fund Applications close 8 December	S.P.O.T's Tuatapere Community Food Drive 2023 Friday 15 December 6:30pm onwards	 Annual Tuatapere Christmas Parade in the Domain Saturday 23 December	Annual Tuatapere Sports Day Tuatapere Domain New Years Day	Revitalize Music Festival Mangapiri Downs Organic Studfarm Clifden-Blackmount Rd 2-4th Jan 2024

Special thanks to



SEE INSIDE FOR MORE DETAILS!
Want your event here? Let us know at
yourwesternwanderer@gmail.com

COMMUNITY NOTICES & EVENTS

HANDY PHONE NUMBERS

EMERGENCY

POLICE /FIRE/AMBULANCE: **111**



MEDICAL CENTRE: (03) 2266 123

TUATAPERE POLICE STATION:
(03) 2269 020

TUATAPERE COMMUNITY WORKER:
027 757 5983

HAUROKO VALLEY SCHOOL OFFICE:
(03) 2266 753

WAI AU AREA SCHOOL OFFICE:
(03) 2266 285

TUATAPERE CEMETERY TRUST:
(03) 2266 065

TUATAPERE SERVICE STATION:
(03) 2266 475

TUATAPERE FOUR SQUARE:
(03) 2266 898

TUI BASE CAMP CAFE-BAR-RESTAURANT
(03) 2266 250

HUNGRY HIPPO SHOP & TAKEAWAYS
(03) 2266 417

WAI AU TOWN & COUNTRY CLUB
(03) 2266 489

TUATAPERE CHRISTMAS PARADE

Our famous Annual Christmas Parade in the Domain is just around the corner - **Saturday 23 December** - and it's going to be awesome!

Let's make this one bigger and better than last year! Put your thinking caps on for Floats, cars tractors trucks ANYTHING with wheels or hooves!!

We will have the Chocolate Wheel there again, a lollie scramble, Santa and presents, Music, Sausage Sizzle, Good Mood Food and of course, Coffee!

We have a face painter but **we are still looking for someone** to run some games for the children - running races, bag races, egg & spoon races!

Please get in touch with John Munro 027 412 2925 if you help or want to run something!



HUMP RIDGE GREAT WALK PROJECT UPDATE

Kia ora koutou katoa

The Hump Ridge Great Walk Project team alongside their project partners, Tuatapere Hump Track Charitable Trust and Oraka Aparima Rūnaka, held their 3rd annual community information session on Wednesday 11 October, in Tuatapere, at the Waiau Town & Country Club. Thank you to Nic, Clay and WTCC team for the use of the Club's facilities and for the tasty catering.

The presentation started at 6pm and there was a good community turnout as everyone was keen to hear the project news. The team shared what had been happening in past 12 months for the various aspects of the project. This included the news about the visitor experience, interpretation and storytelling package, the heritage work for Port Craig, and the physical infrastructure construction work on the track and car park.

The PowerPoint presentation and the newsletter handout are now loaded on our project's webpage in the "Project Documents" section **Hump Ridge Great Walk Project: Our work (doc.govt.nz)**.

The documents should be easy to download, read and then, please share with your colleagues, neighbours, friends, and whānau.

Email the project team if you have any questions, have problems with downloading the documents, or want to be added to the project's distribution list via **HumpRidgeGWP@doc.govt.nz**

2 Nga mihi.

It's time for **SPUD IN THE BUCKET**

Join in the fun!
Collect your bucket
and seed from
the WTCC!

\$5 entry fee

Great Prizes!

*If your named bucket from last year
isn't there, just grab a new one!*

Judged in March

Proceeds to Waiau Area School!



COMMUNITY NOTICEBOARD

TUATAPERE PLAYGROUP

Tuatapere Playgroup welcomes all 0-5 year olds & their parents/ caregivers to come join the fun!

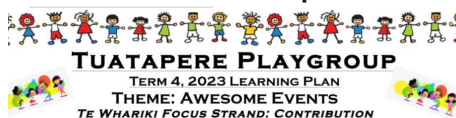


You'll find us at **23B Orawia Road, Tuatapere**
Friday mornings from 9:30am to 12:30pm.

Bring a packed morning tea and drink bottle.

We provide a warm, friendly atmosphere for children to form bonds and learn alongside each other and a place for parents to connect.

For more info message our FB page or contact Gemma on **022 040 3368**



Date	Theme	Activities
20 th October	Sandpit Volcanoes	- Make some volcanoes in our sandpit and watch them erupt!
27 th October	Happy Halloween	- Dress up for Halloween, create some spooky crafts and enjoy some spooky treats.
3 rd November	Glittering Guy Fawkes	- Make some fireworks crafts
10 th November	It's Cool To Be Kind -World Kindness Day	- Make cookies or similar and deliver to the pensioner flats and local businesses for World Kindness Day.
17 th November	Glorious Gloop	- Make some 'gloop' and enjoy experimenting with its unique texture.
24 th November	REAP Visit	- Marae Day from Southern REAP will visit with all her cool play equipment.
1 st December	Crafty Christmas	- Making Christmas decorations to take home and put on our trees and our own Xmas door to put up in Moore's Scenic Reserve.
8 th December	Magical Christmas Doors of Riverton trip	- A trip to Moore's Scenic Reserve Bush Track to see the Magical Christmas Doors followed by a picnic lunch.
15 th December	It's Christmas Let's Party	- Christmas Party with a visit from a special gift-bearing guest. Each family to bring a plate for a shared lunch.



CLIFDEN PLAYGROUP

45 Otahu Eastern Bush Road. Join our FB Group to check if it's on: **Wednesday (during School Term) 9:30am - 12:30pm.**

All mothers and children welcome.

Bring packed lunchbox for your child's morning tea.
Contact: Sarah **027 699 5234**

TUATAPERE TOY LIBRARY

Tuatapere Toy Library has been a toy swap/hire service provided to the young families of Tuatapere and surrounding districts since 1989.

The purpose is to create opportunities for the little people of our community to have accessibility to toys.

A small contribution of an annual membership allows families to join the group and have access to the toys.

For more information or questions please text or ring **Nathalie Pahl** on **027 4759 075**



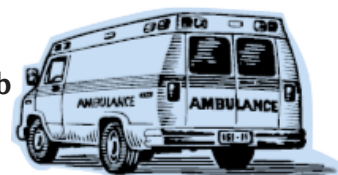
TUATAPERE AMBULANCE

Did YOU Know?

The Tuatapere Ambulance is a funded service by the Tuatapere Lions Club, for the residents of Tuatapere & Districts.

Should you receive an account for this service from St John, please forward it immediately to:

**The Treasurer
Tuatapere Lions Club
PO Box 47
Tuatapere**



Sometimes we experience difficulty in receiving the invoices for YOUR trip - so PLEASE do forward them on to us.

Thank you!

**Tuatapere Lions Club Charitable Trust
Ambulance Committee**

WESTERN SOUTHLAND HEALTH SHUTTLE

The Western Southland Health Shuttle Service travels from Otautau, Ohai, Nightcaps, Tuatapere, Riverton - covering all of Western Southland. We also connect with the Invercargill-Dunedin shuttle.

The Western Southland Health Shuttle operates Monday - Friday (excluding Public Holidays).

Bookings are required by 3pm the day prior to transport.

Ph: 0800 103 046 to book.

Please book as soon as you receive your appointment.

TUATAPERE VOLUNTEER FIRE BRIGADE

We're on the lookout for members to join this rewarding organization. We are looking for persons who are, ideally, available throughout the day.

If you think that you would like to try this (sometimes lifelong) commitment, then please feel free to come and try it!

We train on Tuesday nights at 7:30pm during daylight saving and 7pm through the winter months.

We look forward to meeting with you.



COMMUNITY NOTICES & EVENTS

Waiau Valley Presbyterian Church Sunday School !!!

Welcomes new children to join us in
our weekly Christian-based classes

Every Sunday
from 10:30am



Contact Vicki 027 2270 082
for more information

Waiau Valley Presbyterian Church Tuatapere

Main Road

We meet every **Sunday at 10.30am**

Need to know more?

Phone or message

Cedric on 022 027 3834

WESTERN SOUTHLAND CATHOLIC MASS

Held Fridays at 4.30pm
in the Anglican Church
cnr Orawia Rd & Birch St Tuatapere.

We are a friendly, lively group of
people and everyone is very welcome
to join us especially those who are
visiting the area.

Grateful thanks also to the Tuatapere
Anglican Community for sharing their
church facilities with us.

Fr Brendan Ward (Parish Priest)

Ph: 03 218 4123

basilica.invercargill@gmail.com

Fr Jaewoo Lee (Asst. Priest)

Text preferred - 027 309 422

Loretta's Lawn Mowing Services

Available: Weekdays 3pm til dark
Weekends 9am til dark

Prices depend on size/time spent
doing the lawn

Contact Loretta

027 462 9527

For the Tuatapere area



TUATAPERE HEALTH & GIFT SHOP

(part of Riverton Pharmacy - beside Medical Centre)

69a Orawia Road Ph: (03) 226 6999

12:00pm - 5:30pm Mon-Fri

Good selection of Vitamins, Giftware &
Over-the-counter healthcare

First prescription drop-off from 1:30pm

Second prescription drop-off 4:30pm

COMMUNITY OUTLOOK ARTICLES

The Community Outlook articles are always available on the
On Natures Edge website!

<https://www.onnaturesedge.co.nz/>

SENIOR CITIZENS GROUP

Senior Citizens is a group of over 50s that meet
every **Friday afternoon at 1pm** at the rooms
behind the RSA Hall. We are always looking for
new members so if you would like a fun
afternoon playing bowls, cards or just catching
up with friends, come and join the group.

If you need a ride - we can pick you up!

Please contact:

Olive Bennett (03) 2266 477 or

Alison Bennett 027 224 2724

ESSENTIAL OILS 100% PURE GIFTS OF NATURE
Florals Trees Plants Herbs Spices Citrus

To learn more, phone or text your local Wellness Advocate
Carol Erskine Papatotara 0274 599 654



Get your car washed, dried and windows cleaned.
Price arranged on request!

Contact: Rex Hibbs Flat 1/26 Orawia Rd, Tuatapere

The Small Job Man

Tuatapere Area

- Butcher-Boner
- Lawn Mowing
- Weeding
- Trimming
- Water Blasting
- Chainsaw work
- Wood splitting
- Small Building work
- Fence Painting

Senior Rates

Phone John 022 164 8061

PLEASE HAVE YOUR ARTICLES, NOTICES, OR UPDATED ADVERTS FOR THE WESTERN WANDERER SENT IN BY

20th of NOVEMBER (for the December Issue)



Tune into Tuatapere's very own Radio Station

88.2 FM - Tui FM!

Hits of the 80's & 90's and
today's current music!

POP UP SHOP

**Quality second-hand goods
Affordable prices**

**OPEN FRIDAYS AND SATURDAYS
10am to 4pm**

Tuatapere Presbyterian Church Hall, Main Road,
Tuatapere. Enjoy a cuppa and a chat while there.

HOUSEHOLD ITEMS, CLOTHING, SHOES, BOOKS,
LINEN, TOYS, AND MORE.
CHECK OUT MY WEEKLY FACEBOOK POST FOR A
SELECTION OF THE ITEMS AVAILABLE.

**Donations of items always gratefully received.
Thank you for helping us help the community.
Drop off at the church or for other options
contact me. Carol Diack 021 110 1835**

WANTED BY THE POP UP SHOP

**Blankets/bedding - kitchen appliances/kitchenware
- footwear/clothing - bags/handbags - toys - jigsaws**

If you are able to donate any of the above it would be
much appreciated. Drop off at the church or for other
options please contact me. Carol Diack 021 110 1835

WESTERN SOUTHLAND WOOL AND CRAFT GROUP

Spinning, Felt, Weaving, Knitting, Crochet.
Other crafts welcome!

1st & 3rd Wednesday of the month.
10am-3pm. \$5. BYO Lunch.
Scout Den, Erskine Street.

For details please contact:
Helen Todd 022 103 9327



NEED A JP?

**The following Justices are available
by appointment:**

Tuatapere - Keri Potter - 027 526 3137

Te Waewae Bay - Shirley Whyte - 027 504 5220

Blackmount - Nicky Baker - 027 643 5880



COMMUNITY NOTICEBOARD

WAI AU MEMORIAL LIBRARY

Library Hours: Fridays

10:00am - 11:30am

2:30pm - 4:00pm

7:00pm - 8:00pm



Tuatapere Community Pool

Prices for Season Pass:

Family (immediate family in one house) **\$180**

Buddy key (2 x unrelated individuals living in
separate household not incl. family) **\$180**

Senior Citizens Buddy Ticket (2 x
unrelated/partnered Snr Cit. living in
separate or same households) **\$150**

All prices exclude an Access Tag which is
purchased separately

Access Tag (one-off or refund on return) **\$15**



Like us on Facebook

Tuatapere Community Pool

to keep up-to-date or message the page
for assistance

President: Minessa 027 311 2112

TUATAPERE & DISTRICTS LIONS CLUB PROJECT



SUPER DIRT

Bags@\$8.00 ready for your garden

Super Dirt can be collected from
Rabco's Yard, Groveburn Road

Phone Shirley or Stephen
(03) 226 6817



TUATAPERE COMMUNITY WORKER



Room 5/69A Orawia Road
Tuatapere Medical Centre

**Monday, Wednesday, Thursday
10am to 3pm**

Keri Potter 027 757 5983

Email: tcworker@xtra.co.nz

TUATAPERE COMMUNITY MARKET

Second Saturday of the month. 10am - 1pm
In the Shed at The Well.

Please text 027 297 4767 to book a \$5 table

SALVATION ARMY FAMILY STORE TRUCK

The Salvation Army Family Store Truck will come out and collect large amounts of your pre-loved furniture & other household items. This service is free. Please call the store to organise your visit on 03 214 5380



Family Store

Donate. Buy. Help.

familystore.org.nz



COMMUNITY NOTICEBOARD

Hey, I am a volunteer fire brigade member for our local Tuatapere brigade!

I am on the look out for that someone special to look after our four children aged between 7 and 16 years old (oldest is autistic, which I hope doesn't put anyone off) if the alarm goes off. This is more for through the day or when the husband is away for work. Happy for you to come to mine or I can drop them off.

If you could give me a ring if you are interested - that would be fantastic.

027 4629 527

Thanks again. Loretta Tilby



Tuatapere's own Crafters Collective

COUNTRY CORNER CRAFTS

**WINTER HOURS 11 - 3PM
OPEN MOST DAYS**

- Knitwear & sewing
- Jewellery & Bobbin lace
- Woodware
- Jams, pickles, sauces
- Art works & much more
- Looking for a Tuatapere souvenir? "On Natures Edge" always in stock

ENQUIRIES

LOUISE GREBER (03) 668 6001
MAX MALSEN (021) 422 800
LYLA SHERRIFF (03) 226 6187

New members always welcome.
Want to volunteer? Let us know!

PUKEMAORI BOWLING CLUB

19 Sim Street Pukemaori

We welcome friends and new members. Come and have a roll!
Practice nights **Thursdays 7pm**



Enquiries Phone Ralph Carr 027 3328 672

KEEN TO GIVE SQUASH A GO?

Enquires please contact:

Rebecca Robertson 027 424 6129



ORAWIA HALL - BOOTCAMP GROUP

Come along to our bootcamp to improve your fitness, strength and well-being.

Every **Monday, Wednesday & Friday 6am-7am.**

New people are always welcome.

Cost is \$5 per session - pay as you go!

Contact: Kathy on 021 0811 6603 or

Nessa on 021 1165 106

TUATAPERE ENVELOPES

Envelopes printed with the "Tuatapere on Natures Edge" Logo can be purchased at Country Corner Craft Shop 1A Orawia Road. **Cost \$4.00 per 10**



SOUTHLAND COMMUNITY LAW CENTRE

Free legal information and advice for the community of Southland. 2nd Floor, Cue Building, 33 Don Street, Invercargill. Phone (03) 214 3180

Freephone: 0800 550 800
(outside Invercargill city only)



MONOWAI - 100 YEAR CENTENARY

In May 2025 Monowai will celebrate their 100 year centenary along with the power station

I am looking to find people who have had an association with the village in their younger years and am particularly interested in old photos and stories.

Contact Merrill at merrill.laurence@gmail.com
or call (03) 225 8267

COMMUNITY NOTICEBOARD

THANK YOU!

We had a great response to our call for volunteers to deliver the Western Wanderer once a month in four areas around the Tuatapere Township. A big thank you to those that offered! We have a great team of volunteers and back up deliverers now. Please give them a wave and a smile if you see them delivering your Western Wanderer!

TUATAPERE AMENITIES TRUST - NOTICE OF AGM

The 2023 AGM for Tuatapere Amenities Trust will be held at the Waiau Town & Country Club, 7pm on **Wednesday 22nd November 2023**.

Apologies to **Elaine Ph 03 226 6174** or email elaine@flintoffs.co.nz

WAI AU STAR RUGBY CLUB - NOTICE OF AGM

To be held at Tui Base Camp, Tuatapere on **Monday 4th December 2023 at 7:30pm**.

All welcome. Any enquires please contact **Kristy Nind** on **027 630 9529**.

DR ERIC ELDER BURSARY FUND

Applications for the above Bursary open on the **1st of October 2023**.

The Dr. Elder Bursary is valued at **\$2,000** and is open to all persons wishing to undertake Tertiary Studies for 2024.

Application forms are available from:

The Southland District Council Office
Otautau
Phone **0800 732 732**

or email Dale Egerton at
dreldertrust@gmail.com

Completed application forms can either be emailed to
dreldertrust@gmail.com

or posted to:

Mrs. Dale Egerton
58 Half Mile Road
Tuatapere. 9620

Applications close on the **8th of December 2023**.

Any enquiries please phone **027 3106 199**

REMINDER - THERE IS NO
WESTERN WANDERER PRINTED IN JANUARY
Please include any notices or events to be
held in January in our December Issue

by 20th of November

PADDY'S LUCKY DIPS

I'm Paddy & I've just turned 8.
I make & sell Lucky Dips along
with other cool stuff.



Find me at the **Tuatapere Community Market** in The Shed at the Well every second Saturday of the month.

LOCAL COMMUNITY GROUPS / SPORTS TEAMS

Did you know that it's **free and easy** to
advertise your local group meeting,
fundraising event or sporting team/code
notices in the Western Wanderer!

If you want to share the results of a
game and/or tournament or celebrate
the achievements of a team member or
player - we can print that too!

Send an email to
yourwesternwanderer@gmail.com
by the 20th of the month prior & we'll
also add any event notices to the
Community Noticeboard
for the next issue!



Te Anau Rugby Grounds

<https://www.teanauatorama.co.nz>

Saturday 11th November 2023

10am-3pm



teanauatorama@gmail.com

SPOT

Suicide Prevention Outreach Tuatapere



HAVE YOU CHECKED
ON A MATE TODAY?

CHECK ON YOUR MATES.
CHECK ON YOUR QUIET MATE.
CHECK ON YOUR LOUD MATE.
CHECK ON YOUR ALWAYS OK MATE.
CHECK ON YOUR NOT ALWAYS OK MATE.
CHECK ON YOUR SICK MATE.
CHECK ON YOUR HEALTHY MATE.
CHECK ON YOUR WORK MATE.
CHECK ON YOUR FLAT MATE
CHECK ON YOURSELF, MATE.
CHECK ON YOUR MATES.

EST. 2021
SPOT

We were devastated to learn of the tragic passing of Dr Tom Mulholland who was scheduled to speak at our event this past month.

SPOT look forward to supporting "The Well" with their 'Agriconnect' event on the 24th of November. Aimed at Young Farmers and Students. We would love to see you there! 6pm start!

THE BUDDY SYSTEM

One of the new initiatives SPOT is looking to roll out, is the "Buddy System." A system where individuals buddy up to check in on each other.

If you are interested in becoming a buddy, Please email

tuataperespot@gmail.com for more information.



COMMUNITY NOTICEBOARD

‘AGRICONNECT’ EVENT *Invitation to All Rural Workers, Families and Associates*

A meeting of speakers to address the mental well-being of Rural Workers and those associated rural businesses will be held at **‘The Shed’**, 14 Orawia Road, Tuatapere, on **24th November 2023**, beginning at **6pm**. We envisage finishing about 9pm or when the conversation is finished which may be later.

Our speakers include Jason Herrick from Balclutha, Rural Mental Health Trust, Rural Chaplaincy, Kathryn Wright a farmer and Counsellor from Te Anau, any School Principals or Careers Advisors, and others. Most speakers are either living in rural areas or involved in farming.

The evening will consist of meeting and greeting for about fifteen minutes, then at 6.15pm we will have a series of interesting and informative speakers. When the talk is done and questions asked and answered we will have a barbeque provided by SPOT in Tuatapere. There will also be supper provided with a variety of sandwiches and nibbles.

We are fortunate to be supported by Federated Farmers and other organisations that are interested and or concerned for and in the farming communities in our areas.

Please contact me with any questions and numbers that may be there for an evening of great information, and mixing with those who may have answers people need.

You can call me, **Lynley** on **0272974767**
message me, or email me

8 nanamac60@xtra.co.nz

Local Calendars for Sale!

The perfect Christmas gift
for family or friends!



2024
Calendars
available
now!

Gorgeous Local Scenes

\$15 each

Available at

The Well

Humpridge Track Office

Country Corner Crafts

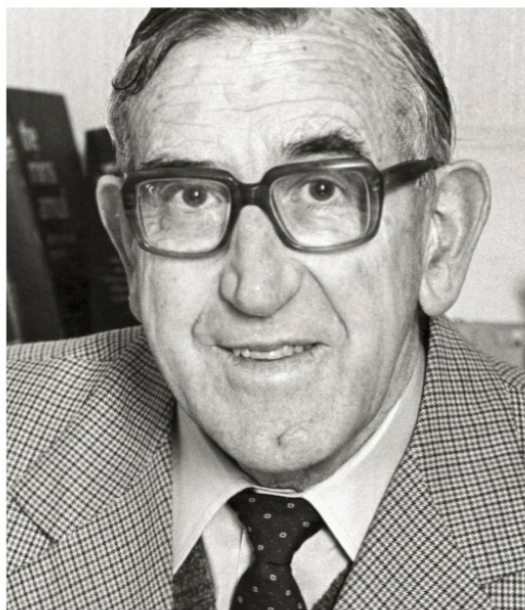
Tuatapere Presby Church Folk

or contact: Lyla Sherriff - 03 226 6187

Fundraising for the
Tuatapere Presbyterian Church

**YOU ARE INVITED TO
THE DR ELDER BOOK LAUNCH**

*THE LIFE AND TIMES OF THE LATE
DR ERIC ELDER*



**WAIAU TOWN & COUNTRY CLUB
FRIDAY 8TH DECEMBER, 2pm
*EVERYONE WELCOME***



Phone: Anita Green 027 506 2418
 Tuesday 9-5pm, Thursday 10-8pm, Friday 10-5pm - Appointments are encouraged.

IN & AROUND THE COMMUNITY

Your Community = Your Archive



Central
& Western
Archive

News from Central & Western Murihiku Southland Archive

Suzie Best,
Digitising Archivist, Social History Researcher

At the end of June, the Central & Western Archives Governance umbrella group took ownership of the old Plunket rooms, to repurpose them for the Community Archives.

Not much more than 3 months later on 13th October, the official opening of the new Heritage Hub building took place with around 50 people present. Mayor Scott officiated and cut the ribbon to the Community Hub and declared it open. Ōraka Aparima Rūnaka Representative Teoti Jardine performed a mihi ceremony and blessing for the new Archive. Speakers on the importance of preserving local and district heritage followed, which were Anne McCracken of Heritage South, Anne Horrell as Chair of the Tūātapere TeWaewae Community Board, then Wayne Edgerton as Chair of Tūātapere & District Promotion Inc. Archive Manager Suzie Best wrapped up proceedings with thanks to all those involved, and Margaret Thomas was honoured with the position of Patron for our Community Archives.

Open weekend was an outstanding success. At times we could hardly move in our new wee Community Archive Heritage Hub, due to the large numbers of people visiting the opening exhibition, focusing on the Borland Lodge Pottery School's of 1978-1992, also local Pottery Clubs including Waiau/Te Waewae. Many memories were shared and recorded as visitors pored over the albums on the Heritage Hub table, full of photos and old exhibit programs.

Not only was the Pipe Band Hall decked out with massive displays of heritage arts and crafts and 10 demonstrations of old crafts, which enticed a number

MOUNTAINS EDGE CABINS MONOWAI



Hunting, Fishing, Mountain Biking,
 Kayaking & Tramping
 Cabin Accommodation

12 Cabins
Double and Single Available
\$35.00 per person per night

Eftpos available
 Full Kitchen Facilities, Showers, Toilets, Playground
 & the Tennis Courts right across the road!

www.mountainedgescabins.com
 Email: mountainedgescabins@gmail.com
 75 Turbine Drive, Monowai. Ph. 03 225 8267



MR STEEL
 TUATAPERE
PH: 027 276 6816
 MALCOLM

**For all your engineering,
 steel fabrication and repair needs!**

PLATE PASTURE METER READING THAT'S QUICKER
METER SERVICES AND EASIER, WITH AT THE GATE REPORTS
TROUGH CLEANING SERVICES

- Specialist in quality pasture meter reading with advanced sensor technology
- Provide 200 measurements per second or 18,500 readings over a single 500m pass
- Provides a fully integrated electronic support system
- Provides a secure web-based storage of information with easy access
- Prompt generated feed wedges for rapid decision making and seasonal comparisons
- Generate reports at the gate, supplying valuable pasture cover data and comparable results every time
- Improve heath & increase animal hydration
- Enhance production & improve water quality
- Reduce bacterial/algae contamination of trough water

**CLEAN TROUGH WATER MEANS
 IMPROVED LIVESTOCK HEALTH**

Now 2 bikes available for pasture metering



Brett George • P 027 351 3408  
 E platemeterservices@gmail.com

of visitors to engage in discussions and reminisces of olden days, there was also an opening exhibition at the Heritage Hub too.



At the Community archive building, displays around the walls consisted of a range of district and township early settler and pioneer family arts and crafts, alongside modern artists and crafters work which replicates the heritage ways of the past. Due to overwhelming success and many requests for the opening exhibits to stay up, we have extended the time this display is on for now. It has taken some creative work to get the Heritage Hub to operate as both an exhibition space and also a community archive, but we think we've struck a balance.

From now on, the Community Archive Heritage Hub is open as follows:

Tue/Thurs from 10:30am - 4:30pm each week

Each 1st & 3rd Friday from 1.30pm - 4.30pm

Every 1st Saturday of the month, 1:30pm - 4.30pm

Groups are welcome to book the Heritage Hub at any time and we can seat 16 people.

If you need to come in at another time not listed, please contact our Digitising Archivist, **Suzie**, on Ph **027 2114 675** or Email Community Archive on: **CentralAndWesternarchive@gmail.com**

There is **FREE** unlimited wifi, with public internet computers available for research, we have a laminator, a binding machine, scanners, printers etc, you can charge your phone or bring your laptop and access power for this, and have a cuppa on our comfy couch, along with bikkies and any other baking we have been donated.

We would appreciate donations to help us with the ongoing costs of providing these services, but our history is available for **FREE**. Any copies can be made at cost, please bring cash, no EFTPOS.

TODD & CO
REALTY

Melanie - your local salesperson

I am proud to be serving my local area, helping people from all walks of life meet their property goals.

After some great sales so far this year, I have a number of buyers still looking.

If you would consider selling, give me a call!

Mel Muldrew

021 068 5262

melanie.m@toddco.nz

TODDCO.NZ

William Todd & Co Ltd, Licensed (REAA 2008)



Choose Local. Choose Melanie.
Serving Southland since 1865.

WaterForce

Irrigation Systems

Pumping & Filtration

Effluent Dispersal

Water Management

20 Winton Hedgehope Highway, Winton

03 236 9805 www.waterforce.co.nz

0800 4 FORCE (4 36723)

DRAKE
PLUMBING & DRAINLAYING LTD

C: 0274 247 102

T: 03 225 8652

E: admin@drakeplumbing.co.nz

KIERAN DRAKE
Certifying Plumber
& Drainlayer



HARRY'S
MACHINES
EARTHWORKS
027 304 3714





* 13 Tonne Digger * 5.5 Tonne Digger * 2.7 Tonne Digger- dry hire or operated
* Tip Truck * Bob Cat * Augers * Post Driver * Tree Saw & Hedge Trimmer

* Tree Trimming * Post Driving * Fencing * Cleaning of Wintering Sheds * Site Clearance * Cartage * Graveling * Lane Maintenance * General Earthworks

For all enquiries and bookings please contact Lance or Alice Harris
Lance: 027 304 3714
Alice: 027 270 0363
Email: lanceharris533@gmail.com
Check us out on facebook- Harry's Machines

IN & AROUND THE COMMUNITY

Tūātapere Reserve Pest Control Group Tui Trappers



Update on our progress ...

We are now a registered charity!

This will allow us to accept tax deductible donations. Tui Trappers has been granted \$3,000 from the Community Board fund to go towards buying new traps and a donation has been received from Clifden Rural Women. Thank you!

Our initial deployed traps wiped out a range of possums and some rats in the first 5 or 6 weeks. Approximately 32 traps reduced possum numbers by 41 and rats by 10. Excellent work Tony and Jared.

Tui Trappers has recently taken on the lease of the Promotions Inc building next to The Well. We will use it for public educational information display in the large window frontage about what our project entails. This will be a source of information about why trapping is important, how we are implementing our project and how people can help. For tourists passing through town, they can stop and learn about the Tui Trappers project, get to know something about native wildlife, and hopefully be encouraged to go and walk some of the tracks in the Domain or to make a donation to support our work.

The Shop will also be used to house a trap library. We hope to get funding to buy traps that members of the community can borrow. **Of course if you have a trap sitting unused in your garage you could donate it to the library so that we can lend it out to others.** It also means that community members can try a trap out before purchasing one themselves or try a different type if theirs isn't catching anything for an extended time. Some animals get trap shy and a change is therefore a good option. School groups can also come to the Shop to learn about local wildlife, trapping, and the value of biodiversity and ecosystem health. A tidy up of the building started in mid October.

Shearing magazine Des Williams (editor)

Tel 07 839 2891 : Mob 0274 833 465

Email : shearingmag@xtra.co.nz

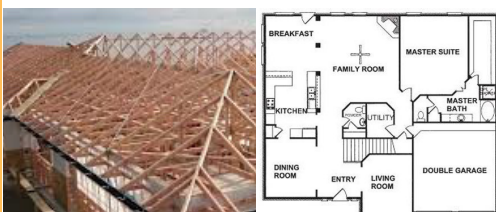
Member NZ Guild of Agricultural Journalists and Communicators (Inc)

LAST SIDE PUBLISHING LTD
PO Box 102, Hamilton 3240, New Zealand

PAUL ANDERSON BUILDER

AVAILABLE FOR ALL YOUR
BUILDING REQUIREMENTS.

NO JOB TOO SMALL.
COMPETITIVE RATES.
REFERENCES AVAILABLE!



Mobile: 027 890 3602
thetakis@outlook.com

IN & AROUND THE COMMUNITY

Tui Trappers first working bee will be on **Saturday 4th November at 10am until 1pm.** It will involve working in small teams to create new trap lines which is quite physical and involves careful removal of fallen branches and pruning of vegetation. Please register with Tony on 027 242 0392 or Glenys on 027 430 7731 as numbers need to be limited for health and safety reasons.

Our Facebook page has frequent updates on what we are doing and other useful information:
<https://www.facebook.com/TuiTrappers>

Did you know this about rats in NZ?

- There are 3 species - the Norway, Pacific (Kiore), and Ship rat (*Rattus norvegicus*, *exulans*, and *rattus* respectively).
- Rats are a major problem because they are omnivores and eat eggs and chicks of native birds, lizards, weta, etc., flowers, fruit, leaves, and so on and compete for food with native species.
- Ship rats are very good climbers.
- Rats have an excellent sense of smell and so bait for traps often takes advantage of this.



From left to right: Norway (or Brown) rat, ship (or Common) rat, kiore (or Polynesian rat), mouse: Natural Sciences Image Library of New Zealand (photo: Peter E. Smith)

WAIATU VALLEY SHEARING LTD



Simon de Vries
Julie Heaps
027 840 9867
03 226 6212

EGERTON CONTRACTING

for all your cartage needs!

Bulk Tip Unit

Tractor available with soft hands for loading of Baleage etc

ALSO Supply available of Wood Chips / Sawdust

Beach but-end firewood loads

PH: EAMON 027 371 8674

SOUTHLIFE Community CHURCH

Steve & Sharon
 are Pastors
 and we are an area church



We believe in Community and endeavour to show this the best we can by the way we care and serve!



We warmly invite you to come along to one of our services.
 It would be great to see you

Sunday Service
10am Truro St, Orepuki

Steve & Sharon Calder
 027 321-1108



Have your say!

Southland District Council is now consulting on policies and documents which could impact you and your community. We want to know what you think.

Consultation is underway in relation to the following:

- Draft Speed Management Plan for 2024 – 2027, which proposes our approach to speed management throughout Southland District, including changes to the speed limits in higher risk locations. Submissions close 5pm on Friday 10 November 2023.
- Draft Trading in Public Places Bylaw, which consolidates the Trading in Public Places Bylaw, the Signs and Objects on Roads and Footpaths Bylaw and the Alfresco Dining Policy. Submissions close 5pm on Monday, 13 November 2023.

This is your opportunity to have your say. Visit www.makeitstick.nz or your local Southland District Council area office to find out more.

TUATAPERE COMMUNITY FOOD DRIVE 2023

S.P.O.T in conjunction with the Tuatapere Community worker support trust invites our local community and surrounding areas to join in another **FOOD DRIVE** for 2023

On the **15th of December at 6:30pm**, we will be traveling around the Tuatapere Township collecting non-perishables food items for our Community Worker to distribute to families over the Christmas period.

If you could please have these items clearly visible by your letter box or bring them out when you hear us coming near for us to collect and to say thank you.

We will have a space at our local Four Square supermarket to place items in if you find you may not be home, also a drop off point at Hauroko Valley Primary & Waiau Area School before the 13th December.



**S.P.O.T WOULD
LIKE TO THANK
YOU ALL**



Alex Reid CONTRACTING

**Paddock Cultivation from
Ploughing to Sowing
Dry Hire available
Aerating
Direct Drilling
Ridging
Mulching**



Dairy Lane Maintenance

Tip Trailers • Vibrating Roller • 2 Tip Trucks

Sheep Conveyor

Drenching, Vaccination etc • 3 way draft

Large Skid Steer for calf shed cleaning, loading Muck Spreaders etc

4 Muck Spreaders • 16,000 litre Slurry Tanker
Pond Stirrer • Umbilical Slurry System



Rural Contractors
NEW ZEALAND

**PHONE ALEX
0212775308 CELL
03 2255377 HOME**



TUATAPERE RECYCLING CENTRE

Remember ... If it can go in the Yellow Bin it can go to our Recycling Centre at the end of King Street, in Tuatapere.

What goes in the yellow-lidded bin?

Invercargill City Council and Southland District Council have a commingled yellow recycling bin service.

- Plastic bottles, clear and coloured
- Plastic containers, pots, tubs, trays and soft plastics
- Metal cans and tins
- Non-food grade white polystyrene
- Paper and cardboard
- Glass food and beverage packaging (bottles and jars)

How to prepare the recyclables:

- Empty, clean and dry (Wash and **DON'T Squash**)
- Do not flatten the plastic bottles, metal cans and tins
- Flatten the paper and cardboard
- Lids, caps, bottle neck rings, film lids, pumps and triggers removed and placed in the **RED BIN**

What **cannot** go in the commingled yellow recycling bin?

- Dirty and/or unwashed plastic, metal and metal cans
- Food waste
- Clothing, fabrics and shoes
- Drinking glasses, window or windscreen glass
- Rubber, tyres and hosing
- Building materials and garden waste
- Electrical appliances, cords and cables
- Batteries
- General rubbish

FORDE WINDERS SHEARING LTD

Available for all new and existing clients

For all your shearing and crutching requirements

Please phone

Darin Forde 027 229 7760

Jeremy Winders 027 231 4299



027 252 7933

- ☒ Renovations
- ☒ Extensions
- ☒ New Builds
- ☒ Sheds/Farm buildings
- ☒ Decks
- ☒ Pre-purchase house Inspections

Call us for any building requirements

Ph 027 252 7933 email: aaroncbltd@gmail.com



Our Services

- **GRAPHIC DESIGN SERVICES**
INCLUDING: LOGO DESIGN & BRANDING PACKAGES, PHOTO EDITING
ADVERTISING DESIGN FOR PRINT OR DIGITAL & EMAIL SIGNATURES
- **OFFICE & WORKSHOP STATIONERY**
INCLUDING: CUSTOM PRESENTATION/DISPLAY ITEMS & BRANDED GIFTWARE
- **WEDDING & EVENT STATIONERY & SIGNAGE**
- **PERSONAL STATIONERY, GIFT ITEMS & PACKAGING**
- **CERTIFICATES - PADS - CALENDARS - BOOKLETS**
NEWSLETTERS - STICKERS - LABELS - VINYL DECALS

Contact us to book your design consult today.

We'd love to learn about your project & help your vision come to life.

We are conveniently located at

9 Cumnock Street, Wallacetown

P: 027 242 8109 E: mcmahondesign@outlook.com

OPENING HOURS:

Mon & Fri: 9.30am - 2.30pm Tues - Thurs: 9.30am - 4.00pm



**BEN MCMASTER
BUILDING**

Ph: 027 202 7955
benmcmaster@live.com

- Licensed Building Practitioner
- Sheds, renovations & new homes
- Based in Western Southland

You dream it, we'll build it



KIA ORA, NI HAO, KAMUSTA

Western Wanderer Readers

It's Term 4, and as always the final term is filled with engaging learning as we head to the finish line! **Kowhai** has designed recycled creations to meet a Technology brief. Each had to draft their plan and then work to complete their project for presentation. Our youngest learners demonstrated focus to modify original ideas to meet criteria. Wow, impressive results are on display!



Matai have been Geologists studying different rocks under magnifying glasses and a microscope. They have been categorising river and beach stones as Scientists. There are some incredible findings from local Western Southland locations. They can't wait to head on their EOTC to put their theory into practice.



Totara has been studying the Rugby World Cup. They are investigating countries represented. A vast amount of information has been sourced with knowledge of players and their positions. **RWC2023 Grand Final or #BigDance here we come! GO the AB's!!**



Rata have been decorating rocks in prep for Pet Day, these will be shared with our local community soon. Term 4 for our Seniors is full of engaging opportunities together with concentrated learning, HVP School Values and NZC Key Competencies.



Rural Lifestyle Residential
For all your Shearing Services.

**No mob too big
No mob too small
We do it all!**

**Contact Ricky Skipper to book in now
027 351 2620**

Specialising in
Dairy Conversions
Rural Fencing
Post & Rail

H Gill Fencing,
Eastern Bush
Phone 021 225 5489
After Hours 03 225 5488
Email hamish@hgillfencing.co.nz





office@acceleratephysio.co.nz
60 Deveron Street, Invercargill
(off street parking)

0800 291 475

Accelerate is a gentle form of exercise, effective in providing long term solutions after an injury, especially low back pain.







Joel Barnes
BHPT, BExSci

Andrea Robertson
BHPT, PG Cert ACUP

Andrea Murray
Dip PHYT Dip M.T.

Find us on  facebook

www.acceleratephysio.co.nz



We have interests in:

> Spinal/Back & neck injuries	> Acupuncture
> Sporting Injuries	> Balance & Dizziness
> Running, Cycling & Multisport	> Workplace Injuries / Ergonomic Onsite
> Men & Women's Pelvic Health	> Work Evaluations & Educations
	> Pilates

HAUROKO HAPPENINGS



Pet Day is a highlight on our school events calendar. Our learners complete Pet Diaries which include a wealth of information to share about the care, condition, handling, knowledge, and daily programme for each pet. Judges spend time reading and asking questions to further establish students' knowledge. We have superb animal lovers who shared their knowledge with skill and pride! Well done!



Categories of creations included, 3 decorated cupcakes, farm scenes, lego including kitsets & own creations, decorated rocks - either a group or a rock, and recycled designs. The presentation of ideas and innovation is always impressive. Our Guest Judges, including our Grandparents, enjoy viewing the creations and presenting certificates for effort, participation, effectiveness and excellence of design as showcased.



Thank You to our Home and School for their work organising our 2023 Pet Day. A special thank you to our families for your time, energy, and expertise with your child/ren and their creations and pets. Thank You to our school community for joining us to support our children whether as Guest Judges, family, or friends. On behalf of Hauroko Valley Primary School Staff, Nga mihi Julia.



Registered **ELECTRICIAN**

For all electrical work
No job to small
A/Hours service available

Jay Brownlee
8 Carlyle Street, Tuatapere 9620
A/H 03 226 6673
Mob 027 4965 863
sparkieintuatapere@gmail.com

For all your Accounting and Tax Solutions

Ask for Janice or Trevor England

 **03 2266110**

Aparima Accounting Ltd
57 Main Road Tuatapere



CANTERBURY CARS

4WD Specialists

For all your vehicle requirements

Cars, utes, 4WDs, vans

Finance available

Contact: **Murray Dowling**
027 556 2655

Visit our website
www.canterburycars4x4.co.nz

Waiau Town & Country Club

<https://www.waiautownandcountryclub.co.nz>

Phone: 03 2266 489 | Address: 41 King St Tuatapere

✉ waiautcc@gmail.com |  facebook.com/waiautcc



Courtesy Van Available

Club Opening Hours

Mon - Thurs 4pm till close.

Fri 3pm - close.

Sat Noon - close.

Sun 3pm - close.

New Members Always Welcome!

Just pop in or call the club for a nomination membership form.

Annual membership 2022/23 is \$50 p/p or

\$30 p/p for pensioners.

**Bistro
Hours**

**Thursday - Sunday
5 - 9pm***



(*Bistro may close from 7:30pm
onwards if not required)

**We are the perfect place for your
functions/birthdays!**

Keep an eye on
our Facebook Page
for more details
on upcoming
events ...

We can cater!
Call us to discuss
options!
03 22 66 489

**Waiau Town & Country Club
Members and their Invited Guests**

For all your fencing requirements

WESTERN FENCING

SHEEP | DAIRY | DEER



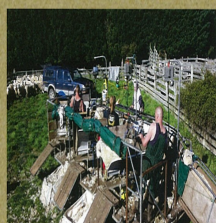
Call BEVAN 0277 413 213



DAGWOOD DAGGING

Available now to all new and existing
customers for all your crutching
requirements.

3 Stand or Single trailer available
7 days a week, wet or dry.



No job too big or too small.

Competitive rates

Jeff Chambers

027 3042 241

LOCAL HISTORY - SPECIAL FEATURE

Historic Notes Contributed by George Charlton

The following article was published in *The Southland Times* (approximately early 1980s)

In remembrance of the Opening Day of the Tuatapere Bowling Club (circa 1930)

The Tuatapere Bowling Club's present location on Birch Street is the original site.

Continued from last month's issue ...

Ambitions Realised (in looking back 50 years)

Wednesday was certainly a great day for the sportsmen of Tuatapere. Ambitions were at last realised and even if the town was a trifle delayed the town had added 'in the form of a bowling club' another institution to the district's sporting activities. Everything worked out smoothly for the President (Mr G Charlton) and his enthusiastic committee. The day was a good one, the 'Green' was in first-class order and the right spirit was in the air. Visiting bowlers numbering 120 from city and country clubs lined the banks of the 'Green' and the President extended a welcome. "Our great day is here at last", he said "and I thank all of you for coming to visit us in honour of this festive occasion. We have been endeavouring for years to get a Green going in Tuatapere. It was twenty one years ago", Mr Charlton said "that attempts were first made to start a club but difficulties came in the way and the idea was postponed until several years ago. Last year, however, matters were brought to a head when negotiations were entered into with the Southland Amateur Sports Trust and it was made possible for a definite start to be made with the Green." The results were before them that day. They had to thank Messrs FG Stevenson (last year's Centre President), RT Meredith (Chairman of the Sports' Trust), JC Thompson (Secretary of the Centre) for their parts in the achievement. A sum of 300 pounds had been borrowed from the Trust and with this money they had been enabled to buy the freehold of the section and proceed with construction of the Green. Their own members had been hard working and had put in

a lot of work. The township was only 24 years old in existence and during that short time they could claim to have built four churches, a school and businesshouses and established many organisations and sporting institutions. They were proud of their achievements. "We feel that we are all clapping today by opening this bowling green", concluded the President. "This section was one of logs and stumps five or six years ago and you will agree that we are delighted with the results of our labours. The Club and the people of Tuatapere are indebted to the Southland Centre for its sympathy and to Mr Meredith and Mr Thompson for the assistance they have given to the development of the Green. We are not strong in membership just yet but we are hoping the residents will get the bowling bug and help us along (applause)." Mr Charlton apologised for the unavoidable absence of Messrs JH Loudon, the Centre's representative on the Southland Centre.

Mr DM Scandrett, President of the Southland Centre, in returning thanks on behalf of the visiting bowlers for their wonderful reception said that he had never attended an opening ceremony of a bowling club where there had been such a big muster. This was no doubt gratifying to the Tuatapere Club and certainly a very happy augury. He referred to the sympathetic part played by the Chairman of the Southland Amateur Sports Trust (Mr Meredith) and complimented the club on the remarkable improvement made on the section. The state of the Green after such a short period was a monument in itself of the hard work put in and spoke volumes for the keenness and enthusiasm of the members. With such a start they could not help but succeed. His sympathies were always with the country bowlers and as long as he had anything to do with the Centre country clubs would always be assured of his support and assistance (hear hear).

Tui Base Camp



**Open
from
8:00am
every day!**



Kitchen open until at least 7.30pm

**COME IN &
CHECK OUT OUR SPECIALS**

Live Music

Fri 17th Nov - Nicky Moran

Sat 2nd Dec - Southern Bandits

"Work/Family/Team Xmas Functions"

Contact us to book in your dates/get a quote

Ask for one of our Coffee Cards with your next
Amore Coffee (Dine in or T/A)

Pre-order your morning tea and lunches by calling
(03) 226 6250 and we can have it ready for you
to pick up when it suits you.

Don't forget we now have a mini-van!

Contact us to organise a night out at
Tui Base Camp (pick-up and drop-off).

Enquires to **James 027 837 3521**

For all of your dine in and takeaway requirements including:

- In-house roasted Amore Coffee
- In-house made pies, sausage rolls,
cheese rolls
- Range of breakfast options
- Packed lunches
- Catering

Phone: (03) 226 6250

www.tuibasecamp.co.nz



**Keep an eye on our
Facebook Page
for our latest updates!**





BANGING DEALS AT YOUR LOCAL STORE

<p>Jim Beam Gold & CC Premium 7% 330ml 6pk cans \$19.99 Not Stocked</p>	<p>Cody's (Inc Zero) 7% 250ml 12pk cans \$24.99 EACH</p>	<p>Good & Great Tui Vodka Soda (ex bourbon) 7% 12pk can range \$25.99 EACH</p>	<p>JD's Double 250ml 10pk cans \$25.99 Not Stocked</p>	<p>Smirnoff Soda 330ml 10pk can range \$26.99 EACH</p>	<p>Major Major 10pk can range \$27.99 EACH</p>	<p>Barrel 51 7% 250ml 12pk cans \$27.99 EACH</p>	<p>Cruiser 7% 12pk can range \$27.99 EACH</p>							
<p>Clean Collective 5% 250ml 12pk cans \$27.99 Not Stocked</p>	<p>Smirnoff Ice Double Black Lemon, Guarana (inc zero) 250ml 7% 12pk cans \$28.99 EACH</p>	<p>JD's & Cola 4.8% (incl no sugar 375ml) 5% 330ml 10pk can ranges \$29.99 EACH</p>	<p>JB & Cola; CC 320ml 4.8% 20pk bottles \$31.99 Not Stocked</p>	<p>Coruba (Mango / Raspberry) 330ml 5% 10pk cans \$41.99 EACH</p>	<p>Woodstock 7% 250ml 18pk cans \$43.99 Not Stocked</p>	<p>Long White 15pk bottle range \$44.99 EACH</p>	<p>Jim Beam Canadian Club (incl Zero) 18pk 330ml cans \$10.99 EACH</p>	<p>Jacobs Creek (ex Sparkling range) Montana Classic \$10.99 EACH</p>						
<p>Wolf Blass Yellow Label range (ex PN) \$12.99 EACH</p>	<p>Mud House range (ex PN) Jam Shed (Red, Shiraz, Chard) \$14.99 EACH</p>	<p>Wither Hills (incl Early Light range) (ex Reds) \$15.99 Not Stocked</p>	<p>Villa Maria Cellar Selection Esk Valley ranges (ex PN, Syrahs, Grenache) \$24.99 Not Stocked</p>	<p>Pasqua 1.5L Magnum range \$24.99 Not Stocked</p>	<p>Brown Brothers Patricia Brut Cuvee; Australian Tawny \$59.99 Not Stocked</p>	<p>Moet Chandon Brut NV \$69.99 Not Stocked</p>	<p>Jim Beam Black 700ml Non alc 6pk 250ml mixer \$8.99 \$39.99 Not Stocked</p>	<p>Absolut flvrd ranges all 700ml \$42.99 Not Stocked</p>	<p>Jack Daniel's Original Honey; Apple; Fire Jagermeister Original; El Jimador Blanco; Reposado all 700mls Finlandia 1L \$44.99 EACH</p>					
<p>Jose Cuervo (Silver, Gold) 700mls \$45.99 Not Stocked</p>	<p>Jameson Jameson Orange Jameson Cold Brew all 700mls \$47.99 EACH</p>	<p>Larios 12; Rose Citrus; Chatelle 1Ltrs \$49.99 EACH</p>	<p>Johnnie Walker Red 1L \$49.99 EACH</p>	<p>Jim Beam Canadian Club (incl spiced) Teachers 1Ltrs \$49.99 EACH</p>	<p>St Remy 1L \$56.99 EACH</p>	<p>Maker's Mark 700ml Jim Beam Double Oak 1L \$56.99 EACH</p>	<p>Wild Turkey 1L \$56.99 EACH</p>	<p>Appleton Estate 1L \$61.99 EACH</p>	<p>Bombay Sapphire 1L Bombay Bramble 700ml \$63.99 EACH</p>					
<p>The Glenlivet Founders Caribbean Reserves 700mls \$67.99 Not Stocked</p>	<p>JB 1.75Ltr Roku 1L \$85.99 EACH</p>	<p>Better Beer Kingsfisher Sol 12pk bottles \$24.99 Not Stocked</p>	<p>Speights Summit Ultra 12pk bottles & cans (incl Lime) \$25.99 EACH</p>	<p>BRB 12pk 330ml can range \$26.99 Not Stocked</p>	<p>Monteith's 330ml bottle & can ranges Orchard Thieves range all 12pk \$27.99 EACH</p>	<p>Heineken Silver 12pk 330ml bottles \$27.99 EACH</p>	<p>Poroni 12pk Carlsberg 15pk bottles \$28.99 EACH</p>	<p>Lion Red; Waikato or Speights 15pk bottles \$28.99 EACH</p>	<p>Steinlager Classic 15pk bottles \$29.99 EACH</p>	<p>Heineken 15pk bottles \$32.99 EACH</p>	<p>Tui; Export Gold; Ultra; DB Draught 24pk bottles \$39.99 EACH</p>	<p>Steinlager Ultra Low Carb 24pk bottles \$43.99 EACH</p>	<p>Tiger Crystal Ultra Low Carb; Export 33 24pk bottles \$44.99 EACH</p>	<p>Heineken 24pk cans \$47.99 Not Stocked</p>



Promotion period between 1/11/2023 to 30/11/2023. While stocks last. Promotion only available at participating stores. Please contact your local store to confirm whether they are participating in the promotion and check the pricing in-store prior to purchase. Online pricing will vary.

100% **NEW ZEALAND** OWNED AND OPERATED
thirstyliquor.co.nz

FOLLOW US ON SOCIAL MEDIA



ASK ABOUT
LOYALTY CARD
BENEFITS &
GIFT VOUCHERS



BARRETT *Ag* LTD

FULL SILAGE AND BALEAGE SERVICE



ALL CULTIVATION
INCLUDING DIRECT DRILL
AND STRIP TILLING - PRECISION PLANTING



EXCAVATION
20 TONNE DIGGER/ GRADER
D85 BULLDOZER/ ROLLER
TIP TRUCKS AND TRAILERS



Barrett Ag Ltd
Ph: Kahu- 027 5183 448
E: barrettagltd@gmail.com
FB: Barrett Ag

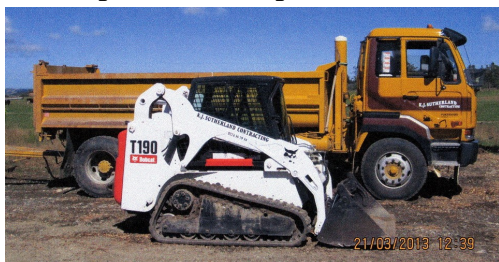


K.J. Sutherland Contracting Bobcat T190

With attachments: Landscape Rake,
Augers and Trencher

Suitable for all landscaping, shed and yard
maintenance

Muck-spreader and tip trailer available



PHONE KEVIN
027 367 934 / (03) 225 5716



WAIĀU AREA SCHOOL
Year 1-13 Education

Live to LEARN, LEARN to Live

Kia ora Western Wanderer Readers!

F.L.I.S (Free Lunches in Schools)

It has been another successful year preparing, cooking and making lunches in 2023. Although there are lunch favourites we have introduced some new dishes to the lunch menu.

We continue to ask for student feedback and would be happy to receive any suggestions or feedback as we look to develop the lunch menu for 2024.

It is rewarding to know our success is being shared with other schools as we advise and support them to develop their own Free Lunches in Schools Programme.



MILLARS

- PLUMBING
- GAS FITTING
- DRAINLAYING
- LICENSED BUILDER

Master Plumbers
Established Excellence

Ph 027 4340 705 or 03 225 8567



We specialise in:

Resource consents

Farm environmental plans

Policy advice

DOC concessions

Landscape plans & assessment

We take care of the paperwork,
so you can do what you do best!

Sonya: 027 5050 077

Rebecca: 027 4246 129

www.slwp.co.nz

Locally owned & operated



Health and Safety Regulations have been completed and verification is now valid until mid 2024. With the approval of the Ministry of Education and the Ministry of Primary Industries we have been able to continue with our successful Free Lunches in Schools Programme.

The lunches are regularly approved by a Ministry of Education nutritionist. This ensures all lunches served are healthy and nutritious and meet the requirements of the Nutrition Standards 2023.

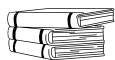


A water filter dispenser has been installed and is available in the school hall for students to use which is proving very popular!

In the WAS Library ...

Non-fiction books and Graphic Novels have been very popular with the junior students so we've been slowly building up our collection of both!

3089 BOOKS HAVE BEEN CHECKED OUT SO FAR THIS YEAR!



Top **5** Junior Non-Fiction Books checked out this year

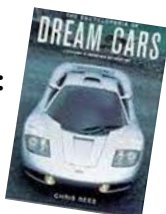
1. New Zealand's Great White Sharks: How Science is Revealing their Secrets



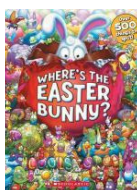
2. Stars & Galaxies



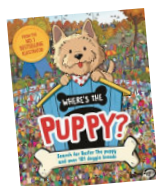
3. The Encyclopedia of Dream Cars: A Celebration of Contemporary and Fantasy Cars



4. Where's the Easter Bunny?



5. Where's the puppy? Search for Buster the Puppy and over 101 Doggie Breeds



Top **5** Graphic Novels checked out this year

1. Dog Man Lord of the Fleas



2. Dog Man: Brawl of the Wild



3. The Lost Heir



4. I Survived the Attack of the Grizzlies, 1967



5. Karen's Roller Skates



For Landscaping, Land Maintenance, Gravel Supply & Cartage

**GRADES OF
CRUSHED & SCREENED GRAVELS,
ROOTRAKING, FARM TRACKS,
DAIRYLANES**



**ELEVATOR SCRAPER,
BOBCAT & ATTACHMENTS,
LANDSCAPING,
TRENCHING AUGERS**

Supplies of Gravel Ex Waiau River

River Run Screened Grades

Concrete Gravel Pea Gravel

Rejects for soak holes Crushed - AP30 & AP65

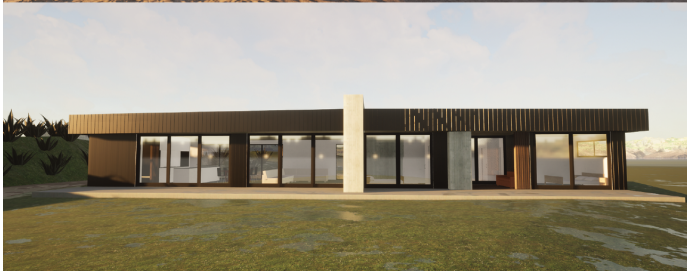
Pebbles for Sheep and Cattle yards & calf sheds

Fines suitable for cow lane capping

**K J SUTHERLAND
GRAVELLING &
AGRICULTURAL CONTRACTOR
2475 OHAI-CLIFDEN H/WAY
ORAWIA RD2 OTAUTAU 9682**

Ph 0274 367 934

BAUHAUS



ARCHITECTURAL DESIGN SERVICES

- SITE FEASIBILITY STUDIES
- CONCEPT DESIGNS
- FULL WORKING DRAWINGS
- RENOVATIONS AND EXTENSIONS
- SUBDIVISIONS
- BUILDING CONSENTS
- RESOURCE CONSENTS

0204 1288 082 // WWW.BAUHAUSNZ.COM // HELLO@BAUHAUSNZ.COM



Ice cream & Milkshake Parlour

16 Orawia Road
8am - 4:00pm every day

Freshly baked Pies,
Sausage Rolls, Cheese Rolls
And delicious baking from Scones and Muffins
to Gluten Free Cakes and Sweet Treats
BUT THERE'S MORE

We are definitely much more than an
Ice Cream Parlour, Cafe and great place to
relax and enjoy good food.
We are also a warm and intimate setting for
Meetings, Dinners and Functions,
Birthdays (children & adult) and Weddings.
We can cater for your Family Gatherings
Any special occasions

Need a quiet place to hold your
meeting - try us.

Cafe is big enough to have an intimate
Wedding (we can even supply The Celebrant),
or an after funeral function.

If it's a breakfast meeting or gathering
Just give us a call. We can provide the lovely
venue and food of your choice.

Just give us a call on
027 247 2524 or 027 297 4767



Lynley McKerrow

Celebrant
Funeral and Marriage

P: 0272 974 767
E: nanamac60@xtra.co.nz
with care - with love - with dignity

WESTERN ELECTRICAL

2008 LTD

Electrical Solutions

Domestic | Industrial | Commercial

Quality Service at Competitive Prices

- New Builds, Rewiring & Alterations
- Dairy Shed, Farm & Industrial Maintenance
- Hotwater Element Replacement
- A/H Call Out Service Provided



Ph 03 225 8974 / 027 439 3787

Fax 03 225 8973



Rabco Ag Ltd – 021 362 766 – admin@rabco.nz
Agricultural Contracting Specialists - Western Southland



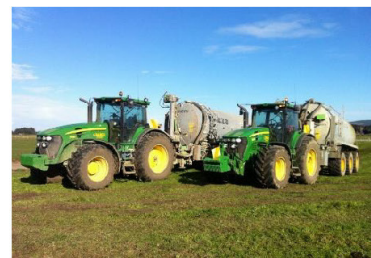
**Full silage
& baling
service**



Cultivation – including Direct Drill & Precision Drill



Effluent – Excavators - Hedgetrimming



Hens for Sale \$13 each

18 month old Brown Shavers

Ex-commercial layers from Te Waewae Eggs
True Southland Free-range

The next lot of chickens available will be available at the beginning of June, and every two months after that.

Ph Rob 03 226 6805 or 022 044 2086



TUATAPERE HANDYMAN SERVICES

Barry Bennett
(03) 226 6730

- **Painting - Interior/Exterior**
- **Waterblasting**
- **Spider & Fly Spraying**
- **General Repair Work**
- **Lawnmowing**
- **Weed Spraying**



WANTED TO BUY

Possum Fur, Hard deer,
Antler, Deer Velvet.

Phone Leith 027 496 3721

Tuatapere Freight

LOCALLY OWNED & OPERATED

RUNS MONDAY TO FRIDAY
WEEKENDS BY ARRANGEMENT

Phone Brandon
027 436 4360



Ratty Says ...

*In residence at the
Waiau Memorial Library*



I'm BAAAAACK!!!!!! Well, I've been here the whole time, but my brain decided to go on a holiday without me. It's very hard to think of things to write when your brain is off on a vacation. Not to mention, my brain literally left me hanging around the entire time it was gone. So RUDE!

I decided it would be fun to have a sleepover at the archives when they had their exhibition. I didn't do much sleeping, I was too busy having fun. I mean learning new stuff. My very first job was to investigate the fridge. I was very disappointed because there was no CHEESE. None. Then I checked out the food cupboard. You'd think I would have found food in the food cupboard, but No, there were lots and lots of folders. You can't snack on folders. I was not a happy Ratty. There were Dolls at the archives, they thought they were going to lead me astray. Silly dolls. They didn't know who they were dealing with. By the end of the night, I'd convinced them to rearrange ALL the displays. We did such a good job. The history people wouldn't be able to find anything. Then the dolls chickened out and put everything back in their place.



Mayor Rob came out to officially open the Archives. That's a long way to come to cut a ribbon. I thought about hiding the scissors but decided not to. Even Ratty knows not to go too far, sometimes. Some of the people who came to the opening didn't know who Mayor Rob was. He went out to his car and got this big gold chain and put it around his neck. After that, everyone knew who he was. I thought it was funny, but I was a very good Ratty and didn't laugh, at least not loudly.

Over the weekend, there was someone using a pottery wheel. I thought it would be a good idea to jump on the wheel and have a ride. WOHHOO!!! I spun round and round and round. It was FUN! Right up until I got flung off the wheel. I was soooo dizzy, I fell flat on my face when I tried to stand up. That's when I decided it was a very good time to lie down and have a rest.



Fantastic Frittata

Simple recipe with not too many ingredients! If your frypan doesn't have a heatproof handle you can place frittata in a suitable dish for going under the grill.

Ingredients

- 2 Tbspns oil
- 1 medium onion, chopped
- 2-3 cloves garlic, crushed (1 tspn crushed)
- 3 large potatoes, pelled and cubed into small dice
- 1 cup of frozen peas
- 1 cup sweetcorn (frozen, fresh or canned)
- 1 carrot, peeled & grated
- 1 cup broccoli cut into small pieces
- ½ cup chopped parsley
- 2 cups grated tasty cheese
- 8 eggs, beaten
- salt and freshly ground black pepper

Method

Heat oil in a large non stick frypan with a heatproof handle that can go in the oven.

Cook the onion and garlic in the pan for 2 minutes.

Add potatoes to the pan and cook for 10 minutes, stirring often. Add the other vegetables, parsley and grated cheese. Stir to mix well.

Pour in the beaten eggs and mix through the vegetables. Season with salt and freshly ground black pepper.

Turn down the heat and cook for 7-8 minutes.

Meanwhile, preheat the oven grill.

Place the frypan under the grill for 4-5 minutes until the frittata is set and golden brown.

Leave in the pan for 3-4 minutes before cutting into wedges.

This can be served hot or cold and is great served with a salad.

Deb's Sewing & Repair Service

mending to making
and everything in between

Got a tricky job? Just ask!

Call or text **021 030 5667** 

GOOD - CHEAP - FAST but you can only pick two

NICKY MORAN **LIVE MUSIC NZ TOUR**
OCT-DEC 2023

TUI BASE CAMP BAR TUATAPERE

7PM FRIDAY
17TH NOV



MULTI INSTRUMENTAL LIVE LOOPING
CLASSIC COVERS / GROOVY ORIGINALS
FOLK / ROCK / COUNTRY / GOSPEL

 WWW.NICKYMORAN.COM 

REVITALIZE

MUSIC FESTIVAL 2024

2ND, 3RD, 4TH JAN



RETURNING TO YOUR NEIGHBOURHOOD

WWW.REVITALIZE.NZ

EARLYBIRD PRICE ENDS
ONCE THE LINEUP HAS BEEN FINALISED

PURCHASE NOW & SAVE

2576 CLIFDEN-BLACKMOUNT ROAD
MANGAPIRI DOWNS ORGANIC STUDFARM®

WAI AU HEALTH TRUST – November 2023

Medical Centre

Meningitis Vaccination:

Is your teen off to boarding school, university, army, or any other close living environments next year? If so, it is important that they're vaccinated against Meningococcal disease. Meningococcal disease, often referred to as meningitis, is an uncommon but serious infection caused by the bacteria *Neisseria meningitidis*. A person with meningococcal disease can develop meningitis, septicaemia, or pneumonia. It strikes and progresses quickly - usually without warning. Vaccination is the most effective way to prevent meningitis & there are two funded vaccines available at Tuatapere Medical Centre for those who are living in a close proximity situation, such as halls of residence or boarding houses:

- Menectra, is a one-off dose which protects against Meningococcal A, C, Y & W, which account for up to 49% of cases.

- Bexsero-a two dose course, eight weeks apart. It protects against Meningococcal B which accounts for up to 45% of cases of meningitis. In 2014-2017 Group B caused 2/3 of Meningitis Cases

If you would like to get your teen vaccinated against the meningococcal disease, contact us, and speak to one of our practice nurses 📞

Sunburn Awareness:

Hopefully by the time you read this we will be experiencing some lovely warm days ☺️ and here are some important messages:

- Sunburn is a burn to the skin caused by excess exposure to UV radiation in the sun.
- It can also be caused by other sources of UV, such as sun beds.
- Sunburn should be avoided if possible-even mild sunburn can damage your skin and increase your risk of skin cancer.
- Mild sunburn causes red, hot sore skin and can usually be treated at home.
- Contact us at the Tuatapere Medical Centre if you are badly sunburnt and feel faint, dehydrated or have severe blistering, or if a young child or baby has sunburn.

Manage-My-Health:

This is a great tool to allow you to book appointments, order prescriptions and view test results. This service is available to you 24 hours a day. If you don't have this APP set up on your phone and would like to do so, or know more about it, please contact us.

Kind Regards,

Jo Sanford (Manager) 0272950429



Waiau Health Trust
69a Orawia Road, Tuatapere
Approved Registered ACC Provider
Monday to Friday
8:30am – 4:30pm
Ph: 032266123

Practitioner Hours
Amanda McCracken (NP)
every weekday

Sheryl Eden (NP)
every Monday & Tuesday

Physiotherapist
Tuesdays & Thursdays
Phone for an appointment

Podiatrist
Visits Tuatapere regularly
Phone for an appointment

Warts/Minor Skin Lesions
Liquid Nitrogen treatment available
Phone for an appointment

Homebased Maternity Care
We are offering this service in the
patient's home. Please contact Jo
Sanford on 032266123 for enquiries.

Day Activities Programme for
the Elderly
Every Monday & Tuesday
Please phone for further information

District Nursing
Available as required by referral



Agricultural Contractors servicing Western Southland and beyond.

BALAGE - SILAGE - GROUNDWORK - FEED TRADING
Nigel 021 226 6156 / fowlecontracting@gmail.com



Tim and Superior go the extra mile

Are you frustrated with the lack of service from your local fertiliser consultant, peddling the same advice year after year regardless of your production outcomes, environment and sustainability?

Give **Tim Adcock** of Superior Fertiliser Specialists a call. He will bring a whole new meaning to service and client/advisor relationships.

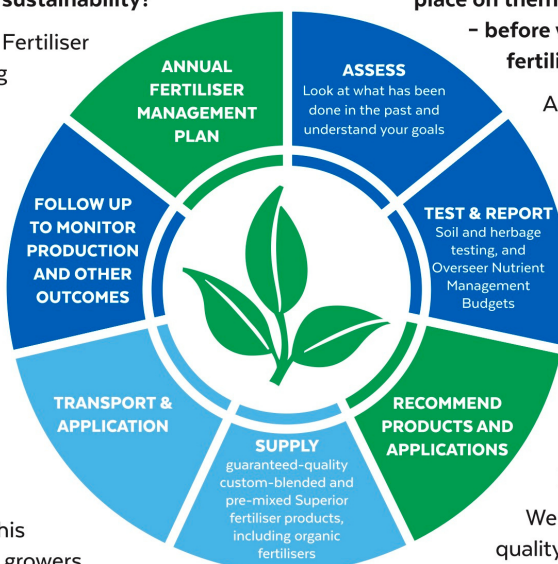
Tim is a key member of the highly skilled Superior team totally committed to helping you develop healthier, more productive soils and plants.

We form a specialist fertiliser company that provides high quality advice and products at competitive prices. We have been doing this for South Island farmers and growers for just on 20 years.

Superior promotes a total soil care package. First, we get to understand the make-up, nutrient status and health of your soils, the demands you are going to place on them, and your production goals – before we apply one kilogram of fertiliser.

A comprehensive regime of vigorous soil tests will be undertaken and the results will provide the basis of a Superior Fertiliser Management Plan customised for your unique situation. This will complement your farm's Environmental Plan and provide the blueprint for an ongoing annual fertiliser programme.

We then supply guaranteed-quality solid fertiliser for your pasture and crops, monitor production and other outcomes, and update your Plans as required.



It's free to talk so don't hesitate to give Tim a call.
Phone 021 418 224



Tim Adcock
Fertiliser Advisor
Otago/Southland
021 418 224
tim@superior.net.nz

 FERTILISER SPECIALISTS
SUPERIOR
www.superior.net.nz

TUATAPERE SERVICE STATION

20 ORAWIA ROAD

PHONE: 03 2266475

HYDRAULIC FITTINGS & HOSES

We stock a good range of crimp on hydraulic fittings for agriculture hoses, we can also repair or make up new hoses.

RIFLES & SHOTGUNS

We have the following rifles in stock and will consider any reasonable offers

1 x 270 Mossberg 4x4

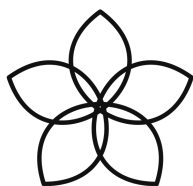
1 x 308 Mossberg 100ATR

1 x H & R .17 Mach 2 Single Shot

1 X 20Ga Escort Semi Auto Shotgun

HOURS

Monday to Friday 8.00am to 5.00pm



blooming boulders

Cut Flower Subscriptions

SIGN UP NOW!

If **YOU** want beautiful, fresh flowers every week
this is for you! Great Christmas present idea too!




What's the deal?

We will deliver a fresh bunch of flowers to you. You don't need to be home, we can leave your flowers in a bucket in a pre-arranged spot for you. You open them up, put them in a vase and enjoy them! Then a week goes by and you will find the next bunch on your doorstep! Chances are, the other bunch is still going pretty good because these flowers are fresh as! So this subscription might require you to add a new vase to your collection or you can give them to your neighbour.


We run the subscriptions in blocks and require full payment **before** the first delivery.

 Block 1: **'Peony'** runs for 3weeks 7/8 Nov - 21/22 Nov **\$90**

 Block 2: **'Summer'** runs for 6weeks 9/10 Jan - 13/14 Feb **\$180**

 Block 3: **'Autumn'** runs for 6weeks 20/21 Feb – 26/27 March **\$180**

Delivery is as follows *(could be subject to slight changes but will be confirmed prior)*

 Clifden/Blackmount/Manapouri/Te Anau/The Key/Mosburn you will get your flowers on Tuesday

 Orawia/Ohai/Nightcaps/Wairio/Scott's Gap you will be Tuesday as well

 Tuatapere/Pukemaori/Merrivale/Otautau you'll be on the Wed. delivery run

 Te Waewae/Orepuki/Pahi/Colac Bay/Riverton you'll be Wednesdays too!

Invercargill, we will be back at the farmers market on Sundays but if there is interest in subscriptions out that way please do send us a message.

To sign up or if you have any questions flick us a message with your email address on our Facebook page or email us direct on **bloomingboulders@gmail.com**



Kind regards

Nathalie & Cameron

PS Tell your flower-lover friends!