



WESTERN Wanderer

Tuatapere | Clifden | Orawia | Blackmount | Monowai | Colac Bay | Orepuki

Cover Photo: Kereru | Sent in by: Barabara

Issue 261

At a glance ... what events are on this month?

OCTOBER 2023

MONDAY	TUESDAY	WEDNESDAY	THURSDAY	FRIDAY	SATURDAY	SUNDAY
					Dr Eric Elder Bursary Fund Applications Open from 1 Oct - 8 Dec 2023	1 Tuatapere Community Pool Open Day Syd Slee Charitable Trust Applications open from 1st - 31st October 2023.
2	3	4 Tuatapere RSA and Tuatapere Armed Services Memorial Bursary Trust AGM 7:30pm RSA Hall Rooms	5	6	7	8 Tuatapere Domain Board AGM 10:30am Tuatapere Domain
9 Term 4 Begins WAS & HVPS	10 Living for Today - Planning for Tomorrow Funeral Preparation 7pm, The Well Orawia Rd	11 Hump Ridge Great Walk Project Catchup with DoC WTCC Doors open 5pm	12	13 Artists of Southland Central Western Archives - Open to Public Old Plunket Rooms, Main St	14 Tuatapere Art Show, RSA Hall, Main St Tuatapere Community Market, The Shed at The Well 10am-1pm	15 Out West Tui TRYathlon 10:30am start Tuatapere Community Pool
16	17	18 Tuatapere Toy Library AGM 7pm Tui Base Camp Tuatapere & Districts Promotions Inc Meeting 7:30pm WTCC	19	20 Art Under the Dome, Mossburn (All Naming Rights Tender Closes for Waiau Star Rugby Team Deadline for WW NEXT Issue content	21 Healthy Thinking with Dr Tom Holland Tuatapere Rugby Domain Free Entry 7:30pm	22 Labour Weekend)
23 Self Defence & Martial Arts Class 6-14 year olds Scout Den Hall Erskine St, 5-6pm Labour Day Public Holiday	24	25	26	27	28	29
30	31	Coming up ...	Te Anau Motorama Cruise Night Fri 10 November Show Day Sat 11 November	S.P.O.T's Tuatapere Community Food Drive 2023 15 December 6:30pm onwards		

Special thanks to



SEE INSIDE FOR MORE DETAILS!
Want your event here? Let us know at
yourwesternwanderer@gmail.com

COMMUNITY NOTICES & EVENTS

HANDY PHONE NUMBERS

EMERGENCY

POLICE / FIRE / AMBULANCE: **111**



MEDICAL CENTRE: (03) 2266 123

TUATAPERE POLICE STATION:
(03) 2269 020

TUATAPERE COMMUNITY WORKER:
027 757 5983

HAUROKO VALLEY SCHOOL OFFICE:
(03) 2266 753

WAI AU AREA SCHOOL OFFICE:
(03) 2266 285

TUATAPERE CEMETERY TRUST:
(03) 2266 065

TUATAPERE SERVICE STATION:
(03) 2266 475

TUATAPERE FOUR SQUARE:
(03) 2266 898

TUI BASE CAMP CAFE-BAR-RESTAURANT
(03) 2266 250

HUNGRY HIPPO SHOP & TAKEAWAYS
(03) 2266 417

WAI AU TOWN & COUNTRY CLUB
(03) 2266 489

Cancer Society

Isobel Green, Tuatapere Area Coordinator

I would, once again, like to thank everyone that helped to make Daffodil Day 2023 such a success!

Thank you to those who ordered fresh flowers - this raised **\$290.00**

A big thank you to Tuatapere Lions for **\$2000** in money and two loads of firewood donated for raffling. 1. Hopper McDougall / 2. Tui Base Camp

Thanks for the help on our stall from Lynette and for the baking that was dropped off. Thanks for all donations of money and donations for raffles and goods. **\$1203** raised!

\$200 Hamper 4 Square won by Johnny Broughton
Scratchy Boards: 1. M. Malsen / 2. L. Row

A huge thanks to the Orepuki Team for a great quiz. You did so well beating your best amount raised ever of **\$2430** ✓✓✓ Great auction of cakes, meat, Dukes veg, whitebait and much more.

Thanks for your support this year and remember next year soon comes around - 2024.



Rosanne Allen Fundraiser – Thank you!

As a family we would like to say a massive thank you to everyone for the ongoing support that everyone has given us during Rosanne's health struggles.

To those that were able attended Rosanne's awesome fundraising event at the Golf Club recently, or supported us with the online raffle – we truly can't thank you enough. Thank you for those who donated auction prizes and those who raised their hand! It was extremely humbling to see the community come together to support us!

Massive shout out to the Tuatapere Golf Club, and to the Tuatapere Lions club, we were kept well hydrated and feed throughout our night and felt extremely supported by our community. We are looking at getting Mum/Rosie into supportive care in Invercargill in the near future.

Thank you all so much.

Pete, Rosanne, Tia and Felix ❤️



Out West Tui TRYathlon

Sunday 15th October
10:30am start

(Entries close Friday 29th September to guarantee a T-shirt)

5-16 year old age groups, open and pre-school
Individual or Team entries
Prize to the school with the most entries!

at the Tuatapere Community Pool
Orawia Rd, TUATAPERE



For more information check out our facebook page OUT WEST TUI TRYathlon (find a link to the entry form), email OutWestTuiTryathlon@gmail.com to receive and entry form and information

Tuatapere Community Pool Fundraiser

COMMUNITY NOTICEBOARD

SYD SLEE CHARITABLE TRUST

Applications are open from 1st - 31st October 2023. For our Application Form and Information Guide Sheet please email ssctrust17@gmail.com
Nicky Baker, Secretary, Syd Slee Charitable Trust

TUATAPERE PLAYGROUP

Tuatapere Playgroup welcomes all 0-5 year olds & their parents/ caregivers to come join the fun!
You'll find us at **23B Orawia Road, Tuatapere**



Friday mornings from 9:30am to 12:30pm.
Bring a packed morning tea and drink bottle.

We provide a warm, friendly atmosphere for children to form bonds and learn alongside each other and a place for parents to connect.

For more info message our Facebook page or contact Gemma on **022 040 3368**

CLIFDEN PLAYGROUP

45 Otahu Eastern Bush Road. Join our FB Group to check if it's on: **Wednesday (during School Term) 9:30am - 12:30pm.**
All mothers and children welcome.
Bring packed lunchbox for your child's morning tea.
Contact: Sarah **027 699 5234**

TUATAPERE TOY LIBRARY

Tuatapere Toy Library has been a toy swap/hire service provided to the young families of Tuatapere and surrounding districts since 1989.

The purpose is to create opportunities for the little people of our community to have accessibility to toys. A small contribution of an annual membership allows families to join the group and have access to the toys.

Come to our **AGM, 18 Oct, 7pm, Tui Base Camp!**

For more information or questions please text or ring **Nathalie Pahl** on **027 4759 075**



TUATAPERE AMBULANCE

Did YOU Know?

The Tuatapere Ambulance is a funded service by the Tuatapere Lions Club, for the residents of Tuatapere & Districts.

Should you receive an account for this service from St John, please forward it immediately to:

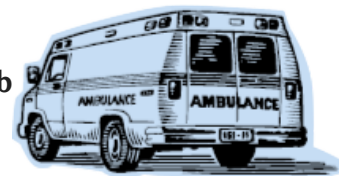
**The Treasurer
Tuatapere Lions Club
PO Box 47**

Tuatapere

Sometimes we experience difficulty in receiving the invoices for YOUR trip - so PLEASE do forward them on to us.

Thank you!

**Tuatapere Lions Club Charitable Trust
Ambulance Committee**



WESTERN SOUTHLAND HEALTH SHUTTLE

The Western Southland Health Shuttle Service travels from Otautau, Ohai, Nightcaps, Tuatapere, Riverton - covering all of Western Southland. We also connect with the Invercargill-Dunedin shuttle.

The Western Southland Health Shuttle operates Monday - Friday (excluding Public Holidays).

Bookings are required by 3pm the day prior to transport.

Ph: 0800 103 046 to book.

Please book as soon as you receive your appointment.

TUATAPERE VOLUNTEER FIRE BRIGADE

We're on the lookout for members to join this rewarding organization. We are looking for persons who are, ideally, available throughout the day.

If you think that you would like to try this (sometimes lifelong) commitment, then please feel free to come and try it!

We train on Tuesday nights at 7:30pm during daylight saving and 7pm through the winter months.

We look forward to meeting with you.



COMMUNITY NOTICES & EVENTS

Waiau Valley Presbyterian Church Sunday School !!!

Welcomes new children to join us in
our weekly Christian-based classes

Every Sunday
from 10:30am



Contact Vicki 027 2270 082
for more information

Waiau Valley Presbyterian Church Tuatapere

Main Road

We meet every **Sunday at 10.30am**

Need to know more?

Phone or message

Cedric on 022 027 3834

WESTERN SOUTHLAND CATHOLIC MASS

Held Fridays at 4.30pm
in the Anglican Church
cnr Orawia Rd & Birch St Tuatapere.

We are a friendly, lively group of
people and everyone is very welcome
to join us especially those who are
visiting the area.

Grateful thanks also to the Tuatapere
Anglican Community for sharing their
church facilities with us.

Fr Brendan Ward (Parish Priest)

Ph: 03 218 4123

basilica.invercargill@gmail.com

Fr Jaewoo Lee (Asst. Priest)

Text preferred - 027 309 422

Max's Lawn Mowing Services

Available: Weekdays 3pm til dark
Weekends 9am til dark

Prices depend on size/time spent
doing the lawn

Contact Loretta (my mum)

027 462 9527 For the Tuatapere area



TUATAPERE HEALTH & GIFT SHOP

(part of Riverton Pharmacy - beside Medical Centre)

69a Orawia Road Ph: (03) 226 6999

12:00pm - 5:30pm Mon-Fri

Good selection of Vitamins, Giftware &
Over-the-counter healthcare

First prescription drop-off from 1:30pm

Second prescription drop-off 4:30pm

COMMUNITY OUTLOOK ARTICLES

The Community Outlook articles are always available on the
On Natures Edge website!

<https://www.onnaturesedge.co.nz/>

SENIOR CITIZENS GROUP

Senior Citizens is a group of over 50s that meet
every **Friday afternoon at 1pm** at the rooms
behind the RSA Hall. We are always looking for
new members so if you would like a fun
afternoon playing bowls, cards or just catching
up with friends, come and join the group.

If you need a ride - we can pick you up!

Please contact:

Olive Bennett (03) 2266 477 or

Alison Bennett 027 224 2724

ESSENTIAL OILS 100% PURE GIFTS OF NATURE
Florals Trees Plants Herbs Spices Citrus

To learn more, phone or text your local Wellness Advocate
Carol Erskine Papatotara 0274 599 654



Get your car washed, dried and windows cleaned.
Price arranged on request!

Contact: Rex Hibbs Flat 1/26 Orawia Rd, Tuatapere

The Small Job Man

Tuatapere Area

- Butcher-Boner
- Lawn Mowing
- Weeding
- Trimming
- Water Blasting
- Chainsaw work
- Wood splitting
- Small Building work
- Fence Painting

Senior Rates

Phone John 022 164 8061

PLEASE HAVE YOUR ARTICLES, NOTICES, OR UPDATED ADVERTS FOR THE WESTERN WANDERER SENT IN BY

20th of OCTOBER (for the November Issue)



Tune into Tuatapere's very own Radio Station

88.2 FM - Tui FM!

Hits of the 80's & 90's and
today's current music!

POP UP SHOP

**Quality second-hand goods
Affordable prices**

**OPEN FRIDAYS AND SATURDAYS
10am to 4pm**

Tuatapere Presbyterian Church Hall, Main Road,
Tuatapere. Enjoy a cuppa and a chat while there.

HOUSEHOLD ITEMS, CLOTHING, SHOES, BOOKS,
LINEN, TOYS, AND MORE.
CHECK OUT MY WEEKLY FACEBOOK POST FOR A
SELECTION OF THE ITEMS AVAILABLE.

**Donations of items always gratefully received.
Thank you for helping us help the community.
Drop off at the church or for other options
contact me. Carol Diack 021 110 1835**

WANTED BY THE POP UP SHOP

**Blankets/bedding - kitchen appliances/kitchenware
- footwear/clothing - bags/handbags - toys - jigsaws**

If you are able to donate any of the above it would be
much appreciated. Drop off at the church or for other
options please contact me. Carol Diack 021 110 1835

WESTERN SOUTHLAND WOOL AND CRAFT GROUP

Spinning, Felt, Weaving, Knitting, Crochet.
Other crafts welcome!

1st & 3rd Wednesday of the month.
10am-3pm. \$5. BYO Lunch.
Scout Den, Erskine Street.

For details please contact:
Helen Todd 022 103 9327



NEED A JP?

**The following Justices are available
by appointment:**

Tuatapere - Keri Potter - 027 526 3137

Te Waewae Bay - Shirley Whyte - 027 504 5220

Blackmount - Nicky Baker - 027 643 5880



COMMUNITY NOTICEBOARD

WAI AU MEMORIAL LIBRARY

Library Hours: Fridays

10:00am - 11:30am

2:30pm - 4:00pm

7:00pm - 8:00pm



Tuatapere Community Pool

Prices for Season Pass:

Family (immediate family in one house) **\$180**

Buddy key (2 x unrelated individuals living in
separate household not incl. family) **\$180**

Senior Citizens Buddy Ticket (2 x
unrelated/partnered Snr Cit. living in
separate or same households) **\$150**

All prices exclude an Access Tag which is
purchased separately

Access Tag (one-off or refund on return) **\$15**



Like us on Facebook

Tuatapere Community Pool

to keep up-to-date or message the page
for assistance

President: Minessa 027 311 2112

TUATAPERE & DISTRICTS LIONS CLUB PROJECT



SUPER DIRT

Bags@\$8.00 ready for your garden

Super Dirt can be collected from
Rabco's Yard, Groveburn Road

Phone Shirley or Stephen
(03) 226 6817



TUATAPERE COMMUNITY WORKER



Room 5/69A Orawia Road
Tuatapere Medical Centre

**Monday, Wednesday, Thursday
10am to 3pm**

Keri Potter 027 757 5983

Email: tcworker@xtra.co.nz

TUATAPERE COMMUNITY MARKET

Second Saturday of the month. 10am - 1pm
In the Shed at The Well.

Please text 027 297 4767 to book a \$5 table

COMMUNITY NOTICEBOARD

Hey, I am a volunteer fire brigade member for our local Tuatapere brigade!

I am on the look out for that someone special to look after our four children aged between 7 and 16 years old (oldest is autistic, which I hope doesn't put anyone off) if the alarm goes off. This is more for through the day or when the husband is away for work.

Happy for you to come to mine or I can drop them off.

If you could give me a ring if you are interested - that would be fantastic.

027 4629 527

Thanks again. Loretta Tilby



SALVATION ARMY FAMILY STORE TRUCK

The Salvation Army Family Store Truck will come out and collect large amounts of your pre-loved furniture & other household items. This service is free. Please call the store to organise your visit on 03 214 5380



Family Store

Donate. Buy. Help.

familystore.org.nz



Tuatapere's own Crafters Collective

COUNTRY CORNER CRAFTS

**WINTER HOURS 11 - 3PM
OPEN MOST DAYS**

- Knitwear & sewing
- Jewellery & Bobbin lace
- Woodware
- Jams, pickles, sauces
- Art works & much more
- Looking for a Tuatapere souvenir? "On Natures Edge" always in stock

ENQUIRIES

LOUISE GREBER (03) 668 6001
MAX MALSEN (021) 422 800
LYLA SHERRIFF (03) 226 6187

New members always welcome.
Want to volunteer? Let us know!

TUATAPER ENVELOPES

Envelopes printed with the "Tuatapere on Natures Edge" Logo can be purchased at Country Corner Craft Shop 1A Orawia Road. Cost \$4.00 per 10



SOUTHLAND COMMUNITY LAW CENTRE

Free legal information and advice for the community of Southland. 2nd Floor, Cue Building, 33 Don Street, Invercargill. Phone (03) 214 3180

Freephone: 0800 550 800
(outside Invercargill city only)



WTU WING TSUN



**Self defence & martial art
for just \$ 12**

↓ Save the date ↓

23.10.23 / 5 - 6 pm

for kids 6 -14 years

Scout Den Hall, Erskine St, Tuatapere

If you want to sign in, please text Sandra.

027 329 1380

ORAWIA HALL - BOOTCAMP GROUP

Come along to our bootcamp to improve your fitness, strength and well-being.

Every Monday, Wednesday & Friday 6am-7am.

New people are always welcome.

Cost is \$5 per session - pay as you go!

Contact: Kathy on 021 0811 6603 or

Nessa on 021 1165 106

COMMUNITY NOTICEBOARD

AGM FOR TUATAPERE RSA & TUATAPERE ARMED SERVICES MEMORIAL BURSARY TRUST

The Tuatapere RSA and the Tuatapere Armed Services Memorial Bursary Trust AGM will be held on **Wednesday October 4 at 7:30pm** at the Tuatapere RSA rooms, Main Street, Tuatapere.

Apologies to **John Munro** (Secretary) 027 412 2925

Please - those of you who are members and also anyone from the public are welcome to come along. Our current core of members who diligently run these meetings would like some of the other members to attend for support and maybe become involved a little more.

AGM - TUATAPERE DOMAIN BOARD

The Tuatapere Domain Board AGM will be held on the **8th October 2023 at 10.30am** in the Tuatapere Domain.

Apologies to the President Mr Dave Norman.

New members most welcome!

KEEN TO GIVE SQUASH A GO?

Enquires please contact:

Rebecca Robertson 027 424 6129



DR ERIC ELDER BURSARY FUND

Applications for the above Bursary open on the **1st of October 2023**.

The Dr. Elder Bursary is valued at **\$2,000** and is open to all persons wishing to undertake Tertiary Studies for 2024.

Application forms are available from:

The Southland District Council Office
Otautau
Phone **0800 732 732**

or email Dale Egerton at
dreldertrust@gmail.com

Completed application forms can either be emailed to
dreldertrust@gmail.com

or posted to:

Mrs. Dale Egerton
58 Half Mile Road
Tuatapere. 9620

Applications close on the **8th of December 2023**.

Any enquiries please phone **027 3106 199**

PADDY'S LUCKY DIPS



I'm Paddy & I've just turned 8. I make & sell Lucky Dips along with other cool stuff.

Find me at the **Tuatapere Community Market** in The Shed at the Well every second Saturday of the month.

MAJOR SPONSOR



With Naming Rights for Senior Team

Waiau Star Rugby Club is looking to secure a Major Sponsor, with Naming Rights for the Senior Team, for the next three rugby seasons (2024, 2025 & 2026). This opportunity is being offered by way of tender, which closes on Friday, October 20th, 2023.

If your business is interested in this opportunity, please contact Alice Harris in the first instance, ph 027 270 0363.

All queries and expressions of interest will be treated in confidence.

Artists of Southland Members

TUATAPERE ART EXHIBITION

13 - 15 October 2023

RSA Hall, Main Street

Opening night - Fri 13 Oct 7pm
Saturday 10-4pm, Sunday 10-3pm

All Welcome
Art for Sale

Artists of Southland





Department of
Conservation
Te Papa Atawhai

TUATAPERE
Humpridge
track
NEW ZEALAND

Want to catch up about the Hump Ridge Great Walk Project?

Kia ora koutou katoa,

Following the success of our previous
two community events, the project
team are again holding their annual
community information session

this month.



You are invited to come along to the

Waiau Town & Country Club

41 King Street, Tuatapere

Wednesday 11 October 2023

to talk about the latest news, project
progress, and next steps.

Doors open 5pm

The presentation and Q&A session will
start at 6pm and finish
approx. 7:30-8pm.

Light snacks, finger food and non-
alcoholic refreshments will be provided
before the presentation.

Representatives from Department of
Conservation (DOC) as well as project
partners and key stakeholders
will be there.

This event is open to anyone from the
Tuatapere community and wider
Western Southland and Fiordland
Districts – please share the news with
your whānau, mates, neighbours and
work colleagues.

If you cannot make it to WTCC, you can
still catch up on the news shared via
our project webpage

[https://www.doc.govt.nz/our-
work/hump-ridge-great-walk-project/](https://www.doc.govt.nz/our-work/hump-ridge-great-walk-project/)

Enquiries about this event can be sent
to **HumpRidgeGWP@doc.govt.nz**
We look forward to meeting you again
and talking about the project.

COMMUNITY NOTICEBOARD

Local Calendars for Sale!

The perfect Christmas gift
for family or friends!



2024
Calendars
available now!

featuring Gorgeous Local Scenes

\$15 each

Available at

The Well

Humpridge Track Office

Country Corner Crafts

Tuatapere Presby Church Folk

or contact: Lyla Sherriff - 03 226 6187

Fundraising for the
Tuatapere Presbyterian Church

ART UNDER THE DOME LABOUR WEEKEND

DATES: FRIDAY 20TH OCTOBER TO 23RD OCTOBER 2023

OPEN TIMES: 10AM TO 4PM DAILY

LOCATION: 54 DEVON STREET, MOSSBURN ON HIGHWAY 94
(SENIOR CITIZEN ROOMS)

ART UNDER THE DOME ON HIGHWAY 94 IS A COLLABORATION FROM LOCAL MIXED MEDIA ARTISTS.
KATH TURNER, TANIA FINDLAY, DEBRA TURNBULL, MARGARET CHRISTIE

Our guest artist for 2023 is Geraldine Brensell



IN & AROUND THE COMMUNITY

Western Southland Rugby - Under 11, 12 & 13 years



Thank you to our amazing sponsors and community!

60 children from Western Southland had the opportunity to play rugby in Queenstown on the 2nd and 3rd of September at the NZ Junior Rugby Festival. Each player represented Western Southland with pride and we played some awesome rugby!

With the thanks to our sponsors we looked extremely smart in our new playing Jerseys and socks. These "kits" will be enjoyed by young rugby players throughout the district in years to come! Each player was also given an awesome hoodie, we hope you have seen them around the district!

We live in a great community your support truly doesn't go unnoticed, the children were made well aware of your generosity!



FORDE WINDERS SHEARING LTD

Available for all new and existing clients

For all your shearing and crutching requirements

Please phone

Darin Forde 027 229 7760

Jeremy Winders 027 231 4299



027 252 7933

- ☒ Renovations
- ☒ Extensions
- ☒ New Builds
- ☒ Sheds/Farm buildings
- ☒ Decks
- ☒ Pre-purchase house Inspections

Call us for any building requirements
Ph 027 252 7933 email: aaroncbltd@gmail.com

MONOWAI - 100 YEAR CENTENARY

Merrill Laurence, Mountain Edge Cabins

In May 2025 Monowai will celebrate their 100 year centenary along with the power station. The residents of the village are planning a celebration. I am looking to find people who have had an association with the village in their younger years. The history of the camp is a little sketchy especially how and when the camp came about. I would be particularly interested in old photos and stories. Our celebration will be open to anyone who wants to come along but at this stage I'm just looking to gather information.

Over the years many people have popped in to the camp telling me their dad/uncle etc worked here, I only wish I'd taken their details!

Please contact Merrill - merrill.laurence@gmail.com or call (03) 225 8267



Experts in Design & Print Solutions

Our Services

- **GRAPHIC DESIGN SERVICES**
INCLUDING: LOGO DESIGN & BRANDING PACKAGES, PHOTO EDITING
ADVERTISING DESIGN FOR PRINT OR DIGITAL & EMAIL SIGNATURES
- **OFFICE & WORKSHOP STATIONERY**
INCLUDING: CUSTOM PRESENTATION/DISPLAY ITEMS & BRANDED GIFTWARE
- **WEDDING & EVENT STATIONERY & SIGNAGE**
- **PERSONAL STATIONERY, GIFT ITEMS & PACKAGING**
- **CERTIFICATES - PADS - CALENDARS - BOOKLETS**
NEWSLETTERS - STICKERS - LABELS - VINYL DECALS

Contact us to book your design consult today.
We'd love to learn about your project & help your vision come to life.

We are conveniently located at
9 Cumnock Street, Wallacetown
P: 027 242 8109 E: mcmahondesign@outlook.com

OPENING HOURS:
Mon & Fri: 9.30am - 2.30pm Tues - Thurs: 9.30am - 4.00pm



Neat Cut

Phone: Anita Green 027 506 2418
Tuesday 9-5pm, Thursday 10-8pm, Friday 10-5pm - Appointments are encouraged.

MOUNTAINS EDGE CABINS MONOWAI



Hunting, Fishing, Mountain Biking, Kayaking & Tramping Cabin Accommodation

12 Cabins
Double and Single Available
\$35.00 per person per night

Eftpos available
Full Kitchen Facilities, Showers, Toilets, Playground & the Tennis Courts right across the road!
We are 'pet friendly'

www.mountainedgescabins.com
Email: mountainedgescabins@gmail.com
75 Turbine Drive, Monowai. Ph. 03 225 8267



MR STEEL
TUATAPERE
PH: 027 276 6816
MALCOLM

For all your engineering, steel fabrication and repair needs!

PLATE METER SERVICES
TROUGH CLEANING SERVICES

PASTURE METER READING THAT'S QUICKER AND EASIER, WITH AT THE GATE REPORTS

- Specialist in quality pasture meter reading with advanced sensor technology
- Provide 200 measurements per second or 18,500 readings over a single 500m pass
- Provides a fully integrated electronic support system
- Provides a secure web-based storage of information with easy access
- Prompt generated feed wedges for rapid decision making and seasonal comparisons
- Generate reports at the gate, supplying valuable pasture cover data and comparable results every time
- Improve heath & increase animal hydration
- Enhance production & improve water quality
- Reduce bacterial/algae contamination of trough water

CLEAN TROUGH WATER MEANS IMPROVED LIVESTOCK HEALTH

Now 2 bikes available for pasture metering



Brett George • P 027 351 3408
E platemeterservices@gmail.com

IN & AROUND THE COMMUNITY

CENTRAL & WESTERN ARCHIVES MURIHIKU SOUTHLAND

Notice of Upcoming Opening Event



Historical Arts & Crafts Display of works from the Old Wallace County District.

Includes slide show of photos from old craft club albums, art works and crafts by early settlers and their descendants and items of a historical nature, exhibits and demonstrations.

Opening Event & Fundraiser \$5 ticket

includes spot prizes for attendance!

An Art Raffle will be available on the day.



13-15 OCTOBER, ALONGSIDE TŪĀTAPERE ART SHOW

At our premises - the old Plunket Building, Main Rd, Tūātapere



Do you have items from your ancestors you can contribute? Are you a district artist/craftsperson who has kept historical crafts alive with your work? Please contact us to enter display!

Email us at

CentralAndWesternArchive@gmail.com
or Phone/Text us on: 027 2114 675

Waiau Community Theatre

Anne Horrell, President



The Waiau Community Theatre players and singers would like to say a big THANK YOU to all of those who were able to attend our production this year; 'Murder & Merriment'. Both Friday and Saturday audiences were wonderful! We had a great time with the variety of content that the show involved. We are very appreciative of Waiau Area School for their generosity in allowing us the use of this venue. A special mention is required for Charmaine and Nina who kindly looked after the ticket sales. It was great to have the 'Tui Trappers' team helping with the catering and serving of supper and we wish them 'all the best' in their new, very worthwhile venture.

We were delighted to be able to honour four of our members with Life Membership. A huge congratulations was extended (and is in this publication) to **Helen McLean**, **Brendon Diack**, **Glenys Steele** and **Jonathan McIntosh** who have all, in their own ways, contributed in a special way to Waiau Community Theatre. Each of these wonderful people are deeply valued for the skills, expertise and commitment they bring. They are all well and truly deserving of acknowledgement and honour.

Next year, 2024, we will celebrate 60 years and we are planning a big, action packed show. Waiau Community Theatre is fortunate to have a faithful, loyal team of troopers but we also welcome newcomers! Please make contact with any of the following if you would like to be a part of the camaraderie and fun involved in being a Waiau Community Theatre member.

President: Anne Horrell 021 2169 808

Secretary: Sue Edgerton 022 1641 971

Treasurer: Helen McLean 027 2206 005

LOCAL COMMUNITY GROUPS / SPORTS TEAMS

Did you know that it's **free and easy** to advertise your local group meeting, fundraising event or sporting team/code notices in the Western Wanderer!

If you want to share the results of a game and/or tournament or celebrate the achievements of a team member or player - we can print that too! Send an email to yourwesternwanderer@gmail.com

by the 20th of the month prior & we'll also add any event notices to the Community Noticeboard for the next issue!

TODD & CO
REALTY

Melanie - your local salesperson

I am proud to be serving my local area, helping people from all walks of life meet their property goals.

After some great sales so far this year, I have a number of buyers still looking.

If you would consider selling, give me a call!

Mel Muldrew

021 068 5262

melanie.m@toddco.nz

TODDCO.NZ

William Todd & Co Ltd, Licensed (REAA 2008)



Choose Local. Choose Melanie.
Serving Southland since 1865.

WaterForce

Irrigation Systems
Pumping & Filtration
Effluent Dispersal
Water Management

20 Winton Hedgehope Highway, Winton

03 236 9805 www.waterforce.co.nz

0800 4 FORCE (4 36723)



C: 0274 247 102

T: 03 225 8652

E: admin@drakeplumbing.co.nz

KIERAN DRAKE
Certifying Plumber
& Drainlayer






* 13 Tonne Digger * 5.5 Tonne Digger * 2.7 Tonne Digger- dry hire or operated
 * Tip Truck * Bob Cat * Augers * Post Driver * Tree Saw & Hedge Trimmer

* Tree Trimming * Post Driving * Fencing * Cleaning of Wintering Sheds * Site Clearance * Cartage * Graveling * Lane Maintenance * General Earthworks

For all enquiries and bookings please contact Lance or Alice Harris
 Lance: 027 304 3714
 Alice: 027 270 0363
 Email: lanceharris533@gmail.com
 Check us out on facebook- Harry's Machines

IN & AROUND THE COMMUNITY

Tūātapere Heritage Orchard Park

Dylan Graves

Part 2 - continued from last month's issue

The **meadow** concept is to provide a more natural landscape where the ground cover under trees has a diverse understory of grasses, herbs, flowers, bulbs, fungi, etc that is more diverse than just mowed lawn and provides benefit to the ecology of the orchard area by encouraging more invertebrates, insects, reptiles, and bird life. In New Zealand, it is estimated that there are about 20,000 insect species! With the predominance of farming, we need more wild places for our biodiversity to live in. Some public places in each town and your garden can be one of these places of refuge if we allow them to be more natural. So, what will be trialled is a reduction in mowing by just cutting some walking pathways through the orchard - the rest will be left to grow and express themselves. Other seeds and plants will be added to the non-mown areas to increase the diversity.

This is an interesting research article about the Cambridge University trial of a replacing traditional lawn with a wildflower meadow cultivation method: <https://besjournals.onlinelibrary.wiley.com/doi/10.1002/2688-8319.12243>

Of note is the increase in biodiversity and large total invertebrate biomass increases. There were many other substantiated benefits as well.

More volunteers always appreciated (leave your contact details at Riverton Environment Centre) and please bear in mind that the zone for dogs in the town area including the orchard means they must be on lead and owners pick up after them.

This is an example of a meadow under fruit trees with a hedgerow in the background.

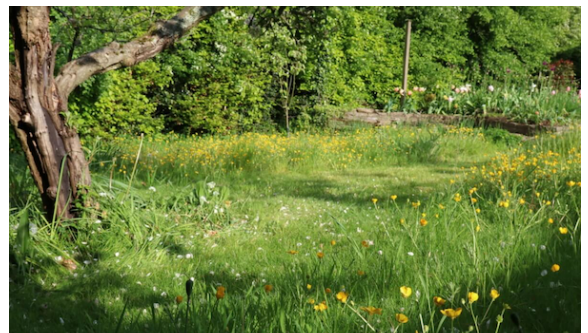


Image credit: <https://www.teabreakgardener.co.uk/>

Shearing magazine

Des Williams (editor)

Tel 07 839 2891 : Mob 0274 833 465

Email : shearingmag@xtra.co.nz

Member NZ Guild of Agricultural Journalists and Communicators (Inc)

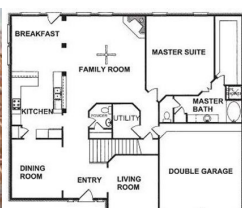
LAST SIDE PUBLISHING LTD

PO Box 102, Hamilton 3240, New Zealand

PAUL ANDERSON BUILDER

AVAILABLE FOR ALL YOUR
BUILDING REQUIREMENTS.

NO JOB TOO SMALL.
COMPETITIVE RATES.
REFERENCES AVAILABLE!



Mobile: 027 890 3602

thetakis@outlook.com

Tūātapere Reserve Pest Control Group Tui Trappers

Update on our progress ...

We now also have an MOU with DOC signed as well as Charitable Trust status granted! Trapping has subsequently started on the ground with donated traps. Committee members are figuring out the most efficient way to cut the track lines for placement of traps in preparation for inviting more volunteers from the community to come and help on our first public working bee. We are also setting up the trap recording system that will log data involved in the day to day trap interactions performed by volunteers.



Tui Trappers first working bee will be on **Saturday 4th November at 10am until 1pm**. It will involve working in small teams to create new trap lines which is quite physical and involves careful removal of fallen branches and pruning of vegetation. **Please register** with Tony on 0272420392 or Glenys on 027 430 7731 as numbers need to be limited for health and safety reasons.

We have a new Facebook page that we will post all sorts of information on to share what we are doing:

<https://www.facebook.com/TuiTrappers>

Other ways to help: We are in need of apples and carrots for baiting traps to catch possums so if you have some that have passed their best, please drop off at 1 Morton Street any time. Thank you!

Send us your native wildlife snap - have you photographed something at your place or while walking in the bush - email it or message it to us at tuipestcontrolgroup@gmail.com

We'll share the best ones on our facebook page!

Here is one of our first successes after installing 25 traps:

Trapped possums.

Image credit: Jared Fleurty



WAI AU VALLEY SHEARING LTD



Simon de Vries
Julie Heaps
027 840 9867
03 226 6212

EGERTON CONTRACTING

for all your cartage needs!

Bulk Tip Unit

Tractor available with soft hands for loading of Baleage etc

ALSO Supply available of Wood Chips / Sawdust

Beach but-end firewood loads

PH: EAMON 027 371 8674

SOUTHLIFE Community CHURCH

Steve & Sharon
are Pastors
and we are an area church



We believe in Community and endeavour to show this the best we can by the way we care and serve!

MISSIONS
"BRIDGE CHRISTIAN MINISTRIES UGANDA"



We warmly invite you to come along to one of our services.
It would be great to see you

Sunday Service
10am Truro St, Orepuki

Steve & Sharon Calder
027 321-1108

**SUICIDE PREVENTION AND
OUTREACH TUATAPERE
PRESENTS...**

**27TH OCTOBER
2023**

7.30 PM

**SUPPER SUPPLIED
AND CASH BAR**

**HEALTHY THINKING WITH
DR. TOM MULHOLLAND**

BUCKLE UP AS WE
SHARE TOOLS AND TIPS
ON IMPROVING
MENTAL HEALTH FOR A
BRIGHTER FUTURE

BEING HELD AT
THE TUATAPERE
RUGBY DOMAIN

FREE ENTRY









Anne Horrell, Chairperson

Contact: 021 2169 808

Email: altonlea.horrells@xtra.co.nz

It's great to see people out and about enjoying Spring.

I would like to say a big 'thank you' to those in our community who voluntarily do great things. This includes the good citizen who regularly collects rubbish on the roadsides, the man on a bike who helps out wherever he can, the resident in the Community Housing who collects and delivers newspapers etc to the other residents, the lovely people who regularly check on our elderly and housebound and help with transportation, the librarians of the Memorial Library who keep this essential service alive for us and the movers and shakers behind sporting, service and cultural groups. These are our unsung heroes who keep the sense of 'community' alive. Welcome to Jason and Wendy at Boundary Creek café/gallery.

It's good to see the tidy up on the flood bank between Erskine and Morton Streets by ES.

In response to Requests for Service to Southland District Council the following has taken place: fallen tree limbs on the Alton Rd have been removed, moss on the road verge above the Bridge St retaining wall has been removed and a protruding, hazardous 'lip' has been dealt with on the entrance to the Half Mile bridge near Elder Drive. Please remember that YOU can submit a RFS on something that concerns you (0800732732). Some excavation work has been done on the roadside approaching Tuatapere on Clifden Rd (left side) to resolve water retention issues. Concerned citizens have expressed to me the need for drivers to take care on Elder Drive. Of late there are considerably more

14 people out walking, parents with

TUATAPERE COMMUNITY

FOOD DRIVE 2023


S.P.O.T in conjunction with the Tuatapere Community worker support trust invites our local community and surrounding areas to join in another **FOOD DRIVE** for 2023


On the **15th of December at 6:30pm**, we will be traveling around the Tuatapere Township collecting non-perishables food items for our Community Worker to distribute to families over the Christmas period.

If you could please have these items clearly visible by your letter box or bring them out when you hear us coming near for us to collect and to say thank you.

We will have a space at our local Four Square supermarket to place items in if you find you may not be home, also a drop off point at Hauko Valley Primary & Waiau Area School before the 13th December.

**S.P.O.T WOULD
LIKE TO THANK
YOU ALL**





prams/pushchairs as well as some youngsters riding on small bikes. The other area to be aware of is the entrance to McLeod's Track from Ferry Rd. Following the removal of some trees a temporary fence has been erected on the river side of the track where a steep slope is now exposed. A more permanent solution will take place but do be mindful.

As a Community Board we are very grateful to Wayne Edgerton who has contributed over 100 voluntary hours working at the railway station. This has involved replacing rotten timber and roofing iron. Wayne has done this as a member of the community who cares about the station's future. The Board have been in discussions with SDC staff in planning the next stage in the project. You may recall that I have reported previously that a grant of \$310,000 was approved for the Community Board from the Government's Better-Off Package. This is specifically for the railway station initiative. With some staff changes at SDC there has been a delay but we are back on track (excuse the pun!) and I will keep you updated.

I had a lovely meeting with some members of the Orepuki Promotions' Group. They have great ideas for future projects. It's so good to see their enthusiasm and positive outlook.

Best wishes to Suzi and the team with the Grand Opening of the Archives Hub, alongside the Artists of Southland exhibition on 13/14/15 October. It will be a busy weekend with the elections as well!

I would like to encourage you to make contact with me or any Community Board member if you have concerns or ideas. We will 'do our best'.

Anne Horrell (Chair) **021 2169 808**

Blayne de Vries (Deputy Chair) **027 6317 273**

Wayne Edgerton (Hall Bookings) **021 0251 1631**

Jo Sanford **027 295 0429**

Marilyn Parris **021 0226 0635**

Paula McKenzie **027 4346 777**

Cr Derek Chamberlain **027 4872 199**

Alex Reid CONTRACTING

**Paddock Cultivation from
Ploughing to Sowing
Dry Hire available
Aerating
Direct Drilling
Ridging
Mulching**



Dairy Lane Maintenance

Tip Trailers • Vibrating Roller • 2 Tip Trucks

Sheep Conveyor

Drenching, Vaccination etc • 3 way draft

Large Skid Steer for calf shed cleaning, loading Muck Spreaders etc

4 Muck Spreaders • 16,000 litre Slurry Tanker
Pond Stirrer • Umbilical Slurry System



Rural Contractors
NEW ZEALAND

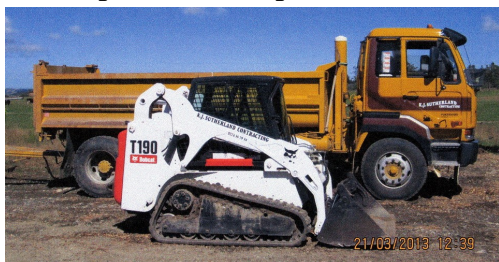
**PHONE ALEX
0212775308 CELL
03 2255377 HOME**

K.J. Sutherland Contracting Bobcat T190

With attachments: Landscape Rake,
Augers and Trencher

Suitable for all landscaping, shed and yard
maintenance

Muck-spreader and tip trailer available



PHONE KEVIN
027 367 934 / (03) 225 5716



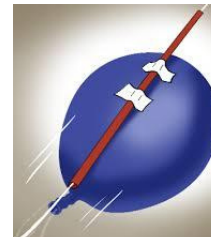
WAIATA AREA SCHOOL
Year 1-13 Education

Live to LEARN, LEARN to Live

Kia ora Western Wanderer Readers!

Science

While the Seniors are busy with external exam preparation, the Junior classes have been learning Physics principles this term. They have investigated ideas like friction, gravity, thrust and aerodynamics.



For thrust force, students have looked at how rockets are launched by doing a simple experiment using balloon rockets.

For investigating aerodynamics, they have made paper helicopters with different wing spans and made conclusions.

We also studied about waves - especially light and sound waves. For this we learnt about the human eye and human ear.

Did you know that the 3 smallest bones in the human body are found in the ear?

They are the malleus, incus and stapes bones.



Food Technology

Food Technology is a subject that teaches students about the impact of food on society, health, nutrition and the environment. It also involves practical skills in preparing and presenting food. The Year 9 and 10 Food Technology class have been busy making both sweet and savoury dishes. Some of the dishes they have made are Hamburgers, Pancakes, Cinnamon Scrolls, Macaroni Cheese and a variety of snack foods like Muesli Bars and Rocky Road.

It is rewarding to share the success of the students as they continue to build on their knowledge and cooking skills.



Should the students have an interest to continue their career related to food the Year 10 course leads on to Level 1, an academic course aimed at preparing students for a career in Food and Nutrition or Hospitality which we offer at WAS.



MILLARS

- PLUMBING
- GAS FITTING
- DRAINLAYING
- LICENSED BUILDER

Master Plumbers
f Ph 027 4340 705 or 03 225 8567



We specialise in:

Resource consents

Farm environmental plans

Policy advice

DOC concessions

Landscape plans & assessment

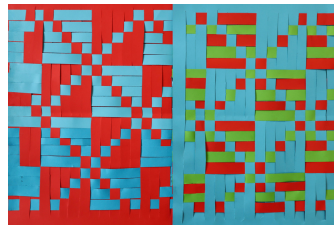
We take care of the paperwork,
so you can do what you do best!

Sonya: 027 5050 077
Rebecca: 027 4246 129
www.slwp.co.nz
Locally owned & operated

Art



There is a great range of creative talents at WAS, from drawing and painting to carving and collaging. Here is a selection of work from Room 1 up to the Year 11 NCEA class. Well done WAS students!



Agriculture

The Year 9 & 10 Agriculture/Horticulture class has had a busy term working in the garden and continuing to construct the hen house for our Agriculture Program. In the garden, seedlings have been grown and are now planted for the coming season and all the framing for the hen house is nearly complete.



For Landscaping, Land Maintenance, Gravel Supply & Cartage

**GRADES OF
CRUSHED & SCREENED GRAVELS,
ROOTRAKING, FARM TRACKS,
DAIRY LANES**



**ELEVATOR SCRAPER,
BOBCAT & ATTACHMENTS,
LANDSCAPING,
TRENCHING AUGERS**

Supplies of Gravel Ex Waiau River

River Run Screened Grades
Concrete Gravel Pea Gravel
Rejects for soak holes Crushed - AP30 & AP65
Pebbles for Sheep and Cattle yards & calf sheds
Fines suitable for cow lane capping

**K J SUTHERLAND
GRAVELLING &
AGRICULTURAL CONTRACTOR**

**2475 OHAI-CLIFDEN H/WAY
ORAWIA RD2 OTAUTAU 9682**

Ph 0274 367 934

Waiau Town & Country Club

<https://www.waiautownandcountryclub.co.nz>

Phone: 03 2266 489 | Address: 41 King St Tuatapere

✉ waiautcc@gmail.com |  facebook.com/waiautcc



Courtesy Van Available

Club Opening Hours

Mon - Thurs 4pm till close.

Fri 3pm - close.

Sat Noon - close.

Sun 3pm - close.

New Members Always Welcome!

Just pop in or call the club for a nomination membership form.

Annual membership 2022/23 is \$50 p/p or

\$30 p/p for pensioners.

**Bistro
Hours**

**Thursday - Sunday
5 - 9pm***



(*Bistro may close from 7:30pm onwards if not required)

**We are the perfect place for your
functions/birthdays!**

Keep an eye on
our Facebook Page
for more details
on upcoming
events ...

We can cater!
Call us to discuss
options!
03 22 66 489

**Waiau Town & Country Club
Members and their Invited Guests**

IN & AROUND THE COMMUNITY

Living for Today - Planning for Tomorrow

Most of us don't want to face our own death and so we leave the preparations for our passing to those who are left behind when we die. We are reticent to talk of death in case we 'jinx' our own lives.

If we do not make preparations before we go we will leave distress, heartache and debt for those that are left to pick up the pieces. It is made worse when family are in the midst of their grief.

Have you prepared? Do you want to leave your family in that distress and debt with the costs of a funeral when you pass away?

Would you like to know what is involved in writing a Will? What is Power of Attorney? What is an Executor of a Will? What happens if you die without a Will? How do I make it easier for my family when it is time for me to go? How do I 'pre-pay' my funeral? When should I update my Will?

All these questions will be answered at a meeting

On - Tuesday 10th October 2023

At - The Well, 16 Orawia Road, Tuatapere

Time - 7:00pm

All your questions will be answered regarding Wills; Funeral Preparation; Costs involved.

These are vital questions that should be part of your life and preparation. Death is no respecter of age, ethnicity, or gender.

Please contact **Lynley** on **027 2974 767** if you have any questions and would like to book a place.

Gauging Interest in Cut Flower Subscriptions

This season we are hoping to make more people happy, by delivering fresh bunches of cut flowers (\$30) weekly to surrounding areas. To do so we need the numbers to make our trip worthwhile.

Let us know if YOU could be interested!

Clifden/Blackmount/Manapouri/Te Anau
Orawia/Ohai/Nightcaps/Wairio/Scott's Gap
Pukemaori/Merrivale/Otautau
Te Wae Wae/Orepuki/Pahi/Colac Bay/Riverton

Let us know via our **facebook page** or messenger
'Blooming Boulders', by emailing us at
bloomingboulders@gmail.com
or txt Nathalie on **027 4759 075**

For all your fencing requirements

WESTERN FENCING

SHEEP | DAIRY | DEER



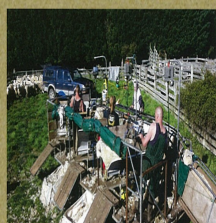
Call BEVAN 0277 413 213



DAGWOOD DAGGING

Available now to all new and existing
customers for all your crutching
requirements.

3 Stand or Single trailer available
7 days a week, wet or dry.



No job too big or too small.

Competitive rates

Jeff Chambers

027 3042 241

BARRETT *Ag* LTD

FULL SILAGE AND BALEAGE SERVICE



ALL CULTIVATION
INCLUDING DIRECT DRILL
AND STRIP TILLING - PRECISION PLANTING



EXCAVATION
20 TONNE DIGGER/ GRADER
D85 BULLDOZER/ ROLLER
TIP TRUCKS AND TRAILERS



Barrett Ag Ltd
Ph: Kahu- 027 5183 448
E: barrettagltd@gmail.com
FB: Barrett Ag





SPOOKTACULAR SPECIALS

<p>\$25.99 EACH</p> <p>Not Stocked</p> <p>Scapegrace 330ml 10pk can range</p>	<p>NEW PRODUCT</p> <p>\$25.99 EACH</p> <p>Woodstock Whisky 4.8% 330ml 10pk can range</p>	<p>\$26.99 EACH</p> <p>ODD Company 10pk can range</p>	<p>\$26.99 EACH</p> <p>Smirnoff Red Ice (Incl Zero) 5% 250ml 12pk cans</p>	<p>\$27.99 EACH</p> <p>Woodstock (Incl zero) 7% 250ml 12pk cans</p>	<p>\$27.99 EACH</p> <p>Not Stocked</p> <p>Clean Collective 5% 250ml 12pk cans Rinse 6% 330ml 10pk cans</p>	<p>\$27.99 EACH</p> <p>Cruiser 5% 12pk bottle range</p>	<p>\$27.99 EACH</p> <p>Jim Beam & Cola; CC Lime 10pk can ranges JB Gold 7% 8pk all 330ml cans</p>			
<p>\$28.99 EACH</p> <p>Gordon's G & T 7% Gordon's G & S 4% Pimms & Lemon 4% 250ml 12pk can ranges</p>	<p>\$29.99 EACH</p> <p>Long White 10pk bottles</p>	<p>NEW PRODUCT</p> <p>\$29.99 EACH</p> <p>Long White 7% 240ml 12pk cans</p>	<p>\$31.99 EACH</p> <p>Coruba 250ml 7% 12pk cans 5% 10pk bottles (ex zero)</p>	<p>\$32.99 EACH</p> <p>Not Stocked</p> <p>JD's Double Jack & Cola (Incl no sugar 375ml) Cheeky Hard Iced Tea 6.5% 330ml 10pk can ranges</p>	<p>\$37.99 EACH</p> <p>Not Stocked</p> <p>Barrel 51 7% 250ml 18pk cans</p>	<p>\$39.99 EACH</p> <p>Cody's 7% 250ml 18pk cans</p>				
<p>\$43.99 EACH</p> <p>Not Stocked</p> <p>Jim Beam Canadian Club 250ml 7% 18pk cans</p>	<p>\$12.99 EACH</p> <p>Not Stocked</p> <p>Hardy's VR 1L range</p>	<p>\$13.99 EACH</p> <p>Villa Maria Private Bin (ex PN, Syrah) range Sparkling \$16.99</p>	<p>\$14.99 EACH</p> <p>Not Stocked</p> <p>Stoneleigh Marlborough; Lighter ranges</p>	<p>\$16.99 EACH</p> <p>Not Stocked</p> <p>19 Crimes (ex Call Red, Rose) range</p>	<p>\$16.99 EACH</p> <p>The Ned (ex PN) range</p>	<p>\$16.99 EACH</p> <p>Not Stocked</p> <p>Taylor's Estate Brown Brothers Prosecco (Incl zeros) ranges</p>	<p>\$21.99 EACH</p> <p>Not Stocked</p> <p>Madam Sass (PN & PR) Matawhero (ex PN) Trinity Hill (ex PN) ranges</p>	<p>\$44.99 EACH</p> <p>Larios Original Canadian Club (Incl speed) 1Ltr</p>	<p>\$35.99 EACH</p> <p>Jim Beam 700ml Non alc 6pk 250ml mixer.</p>	<p>\$8.99 EACH</p>
<p>NEW PRODUCT</p> <p>\$44.99 EACH</p> <p>Not Stocked</p> <p>Bati Dark/Spiced Rum 1Ltr Bati Coconut/Coffee Liqueur 700mls</p>	<p>\$46.99 EACH</p> <p>Gordon's Smirnoff 1Ltr Gordon's Pink Orange/Sicilian Lemon 700mls</p>	<p>\$48.99 EACH</p> <p>Coruba (Incl Gold) 1Ltr Wild Turkey Honey 700ml</p>	<p>\$49.99 EACH</p> <p>JB 1.125ml</p>	<p>\$50.99 EACH</p> <p>Bacardi (Incl Spiced, Gold) 1Ltr</p>	<p>\$51.99 EACH</p> <p>Absolut 1L</p>	<p>\$54.99 EACH</p> <p>JB Double Oak JB Devil's Cut JB Black 1Ltr</p>	<p>\$59.99 EACH</p> <p>Jack Daniel's Jagermeister; Mt Gay Eclipse 1Ltr Woodford Reserve Gentleman Jack 700mls</p>	<p>\$64.99 EACH</p> <p>Jameson 1L Jameson Black Barrel; Malty Chivas Extra 13yr 700ml ranges</p>		
<p>\$64.99 EACH</p> <p>Not Stocked</p> <p>Roku Gin; Haku Vodka Laphroaig Select Cask Ratu Rum range all 700mls</p>	<p>\$69.99 EACH</p> <p>Not Stocked</p> <p>Kraken 700ml</p>	<p>\$69.99 EACH</p> <p>JB Rye Maker's Mark 1Ltr</p>	<p>\$69.99 EACH</p> <p>Not Stocked</p> <p>Hennessy VS Belvedere 700mls</p>	<p>\$79.99 EACH</p> <p>JB 1.75Ltr Laphroaig 10yr Toki 700mls</p>	<p>\$104.99 EACH</p> <p>Not Stocked</p> <p>Hennessy VSOP 700ml</p>	<p>\$20.99 EACH</p> <p>Not Stocked</p> <p>Fortune Favours 6pk range</p>	<p>\$21.99 EACH</p> <p>Not Stocked</p> <p>Tuatara 6pk bottles & Cans</p>	<p>\$23.99 EACH</p> <p>Tiger; Crystal Ultra Low Carb 12pk bottles</p>		
<p>\$27.99 EACH</p> <p>EXPORT Tui; Export Ultra; Gold; DB Draught 15pk bottles</p>	<p>\$27.99 EACH</p> <p>PURE BLONDE Asahi 12pk bottles</p>	<p>\$27.99 EACH</p> <p>Heineken 12pk bottles</p>	<p>\$29.99 EACH</p> <p>EXPORT 33 15pk bottles</p>	<p>\$30.99 EACH</p> <p>Corona 12pk bottles</p>	<p>\$41.99 EACH</p> <p>Lion Red; Speights Speights Ultra or Waikato 24pk bottles</p>	<p>\$43.99 EACH</p> <p>Steinlager Classic 24pk 330ml bottles</p>	<p>\$49.99 EACH</p> <p>Heineken 24pk bottles</p>			



Promotion period between 1/10/2023 to 31/10/2023. While stocks last. Promotion only available at participating stores. Please contact your local store to confirm whether they are participating in the promotion and check the pricing in-store prior to purchase. Online pricing will vary.

100% **NEW ZEALAND** OWNED AND OPERATED
thirstyliquor.co.nz

FOLLOW US ON SOCIAL MEDIA



ASK ABOUT LOYALTY CARD BENEFITS & GIFT VOUCHERS



Historic Notes Contributed by George Charlton

The following article was published in *The Southland Times* (approximately early 1980s)

In remembrance of the Opening Day of the Tuatapere Bowling Club (circa 1930)

The Tuatapere Bowling Club's present location on Birch Street is the original site.

An Auspicious "Kick Off"; Town Bowlers Lend a Hand (By Onlooker)

When 50 years hence at a certain jubilee function in the Tuatapere District an odd hoary-headed veteran plunges recklessly in rapturous reminiscence about the great 'opening day way back in 1930 (circa)' experienced by the Tuatapere Bowling Club, he will be able to hold with the claim that that occasion marked an event in the sporting history of the town.

It was always remembered by the wonderful response from city and country bowlers to assist at the opening. He will tell of the railway department agreeing to commission a 'special' train for the occasion to carry the sixty or more city bowlers and their wives to the timber town and he will also tell of the procession headed by the district pipe band and of young, middle-aged and elderly bowlers; a procession which literally carried the township by storm and landed it with all of its inhabitants on the newly formed bowling 'Green'. And the veteran would be more or less correct in his claim that that impromptu procession had a lot to do with the record attendance which greeted bowlers and ushered in Tuatapere's latest sporting institution 'The Tuatapere Bowling Club'.

The Highland Welcome piped by the band as the 'special' steamed into the station was warm enough for any band of sportsmen, but to be marshalled outside the station and be escorted in approved martial style to the 'Green' was a novel gesture appreciated by the visitors and supported with that spirit which gives bowls an envious distinction.

Tui Base Camp



Open
from
8:00am
every day!



Kitchen open until at least 7.30pm

COME IN &
CHECK OUT OUR SPECIALS

**We are open for all the LIVE
All Black World Cup Games!**

17th November – Live music – Nicky Moran
2nd December – Live music – Southern Bandits

Ask for one of our Coffee Cards with your next
Amore Coffee (Dine in or T/A)

Pre-order your morning tea and lunches by calling
(03) 226 6250 and we can have it ready for you
to pick up when it suits you.

Don't forget we now have a mini-van!

Contact us to organise a night out at
Tui Base Camp (pick-up and drop-off).
Enquires to **James 027 837 3521**

**For all of your dine in and takeaway
requirements including:**

In-house roasted Amore Coffee
In-house made pies, sausage rolls,
cheese rolls
Range of breakfast options
Packed lunches
Catering

Phone: (03) 226 6250

www.tuibasecamp.co.nz



Keep an eye on our
Facebook Page
for our latest updates!





**BEN MCMASTER
BUILDING**

Ph: 027 202 7955
benmcmaster@live.com

- Licensed Building Practitioner
- Sheds, renovations & new homes
- Based in Western Southland

You dream it, we'll build it



Rural Lifestyle Residential
For all your Shearing Services.

**No mob too big
No mob too small
We do it all!**

**Contact Ricky Skipper to book in now
027 351 2620**

Specialising in
Dairy Conversions
Rural Fencing
Post & Rail

H Gill Fencing,
Eastern Bush
Phone 021 225 5489
After Hours 03 225 5488
Email hamish@hgillfencing.co.nz







office@acceleratephysio.co.nz
60 Deveron Street, Invercargill
(off street parking)

0800 291 475

Accelerate is a gentle form of exercise, effective in providing long term solutions after an injury, especially low back pain.







Joel Barnes
BHPT, BExSci

Andrea Robertson
BHPT, PG Cert ACUP

Andrea Murray
Dip PT, Dip M.T.



www.acceleratephysio.co.nz



We have interests in:

- > Spinal/Back & neck injuries
- > Acupuncture
- > Balance & Dizziness
- > Sporting Injuries
- > Workplace Injuries / Ergonomic Onsite
- > Pilates
- > Running, Cycling & Multisport
- > Work Evaluations & Educations
- > Men & Women's Pelvic Health



KIA ORA, NI HAO, KAMUSTA

Western Wanderer Readers



It's Spring and we see the return of Daylight Saving, like many of you, we enjoy the warmer days and longer daylight hours! Our polyfest photos are a stunning representation of our tamariki and their precision & passion in performance. Kia ora, Whaea Cilla for leading our kapahaka journey. We were thrilled with our performance and for the tuakana-teina relationships, kotahitanga/unity and manaaki/care shown throughout our polyfest. It was a rich cultural experience for all.



Rata has been spreading kindness throughout the school. Firstly they eye-bombed outside of the classroom. This created faces with googly eyes as the feature. The intention is simple, to create a smile or spread joy. Their second was yarn bombing with pompoms and gods eyes adorning a tree. They also created lyrics to follow up learning about "Oat The Goat" and how important it is to be an upstander. To give back to Rata, Matai class reciprocated with "You Got Mail", with a small card with fun games in an envelope for each learner. How simple an act, that has the ability to create a small ripple in a big pond. It's amazing how a small positive can have such a huge impact. We look forward to continuing to grow our school values through the Five Ways A Day MHAW.

HAUROKO HAPPENINGS

Term 4 signals the final weeks of our school year. We have several opportunities on the calendar for our tamariki. Our Year 4&5 students head to the Science & Technology Roadshow to experience live shows and hands-on science. All Year 4-6 students excitedly return to the home of the Stags for the Mitre 10 Tough Kids. This is a highlight on their calendar, given its physical challenges and fun. Our Year 5&6 students prepare for their camp at Borland Lodge in December.

Hauroko Valley's Annual Pet Day is early in October. This gives us a chance to bring our school friends and families together. It is an opportunity for our learners to share their knowledge about their pet. We also showcase those with creative sides through a variety of creations including baking, art, lego and recycled designs.



Health and Physical Education focus includes swimming with Johnston Waters to end our Term. Our learning is structured swimming covering fundamental skills for floating, streamlining, freestyle, backstroke, and breaststroke. Again this year, we look to hold our own School Swimming Sports. Of course, there is the final house challenge! Who will take out this year's event?



We look forward to sharing more of our learning adventures with our Western Wanderer whanau soon!



Registered **ELECTRICIAN**

For all electrical work
No job to small
A/Hours service available

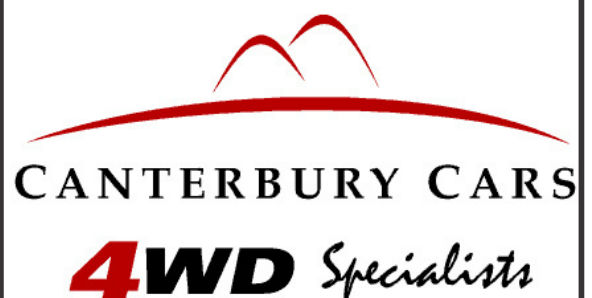
Jay Brownlee
8 Carlyle Street, Tuatapere 9620
A/H 03 226 6673
Mob 027 4965 863
sparkieintuatapere@gmail.com

For all your Accounting and Tax Solutions

Ask for Janice or Trevor England

 **03 2266110**

Aparima Accounting Ltd
57 Main Road Tuatapere



CANTERBURY CARS

4WD Specialists

For all your vehicle requirements

Cars, utes, 4WDs, vans

Finance available

Contact: Murray Dowling
027 556 2655

Visit our website
www.canterburycars4x4.co.nz

BAUHAUS



ARCHITECTURAL DESIGN SERVICES

- SITE FEASIBILITY STUDIES
- CONCEPT DESIGNS
- FULL WORKING DRAWINGS
- RENOVATIONS AND EXTENSIONS
- SUBDIVISIONS
- BUILDING CONSENTS
- RESOURCE CONSENTS

0204 1288 082 // WWW.BAUHAUSNZ.COM // HELLO@BAUHAUSNZ.COM



Ice cream & Milkshake Parlour

16 Orawia Road
8am - 4:00pm every day

Freshly baked Pies,
Sausage Rolls, Cheese Rolls
And delicious baking from Scones and Muffins
to Gluten Free Cakes and Sweet Treats
BUT THERE'S MORE

We are definitely much more than an Ice Cream Parlour, Cafe and great place to relax and enjoy good food.
We are also a warm and intimate setting for Meetings, Dinners and Functions, Birthdays (children & adult) and Weddings. We can cater for your Family Gatherings Any special occasions

Need a quiet place to hold your meeting - try us.

Cafe is big enough to have an intimate Wedding (we can even supply The Celebrant), or an after funeral function.

If it's a breakfast meeting or gathering Just give us a call. We can provide the lovely venue and food of your choice.

Just give us a call on
027 247 2524 or 027 297 4767



Lynley McKerrow

Celebrant
Funeral and Marriage

P: 0272 974 767
E: nanamac60@xtra.co.nz
with care - with love - with dignity

WESTERN ELECTRICAL

2008 LTD

Electrical Solutions

Domestic | Industrial | Commercial

Quality Service at Competitive Prices

- New Builds, Rewiring & Alterations
- Dairy Shed, Farm & Industrial Maintenance
- Hotwater Element Replacement
- A/H Call Out Service Provided



Ph 03 225 8974 / 027 439 3787

Fax 03 225 8973

WAI AU HEALTH TRUST – October 2023

Medical Centre

Covid Guidelines:

As you may be aware, all Covid-19 requirements have been removed as per MOH guidelines. However, if you are experiencing any respiratory symptoms, we ask that you RAT test at home prior to your appointment (RAT test kits are available at the Medical Centre) and still wear a face mask when coming into the clinic. Although not mandated, it is now recommended you isolate for 5 days if you test positive for Covid-19. Please phone the Medical Centre if you think you may be eligible for anti-viral medication.

Due to decreased demand, we are no longer providing Covid-19 boosters. Please seek alternative locations if you are wishing to receive a Covid vaccine.

Skin Lesion Clinics:

If you have any skin lumps or bumps that are causing you concern, we recommend making an appointment to have these reviewed and/or treated. Please phone to arrange a suitable time.

After Hours Care:

Tuatapere Medical Centre continues to provide 24 hour care for our patients. If you require urgent medical care outside of clinic hours, please phone 032266123 and you will be directed to the after hours phone service, who will triage your call appropriately.

Thank You!

We understand that the last 3 years have been challenging for us all. We would like to thank everyone for their support and understanding throughout this tough time. We look forward to continuing to provide the best service to our community and getting back to some form of normality!

Kind Regards

Jo Sanford (Manager)

Cell: 0272950429



Waiau Health Trust
69a Orawia Road, Tuatapere
Approved Registered ACC Provider
Monday to Friday
8:30am – 4:30pm
Ph: 032266123

Practitioner Hours
Amanda McCracken (NP)
every weekday

Sheryl Eden (NP)
every Monday & Tuesday

Physiotherapist
Tuesdays & Thursdays
Phone for an appointment

Podiatrist
Visits Tuatapere regularly
Phone for an appointment

Warts/Minor Skin Lesions
Liquid Nitrogen treatment available
Phone for an appointment

Homebased Maternity Care
We are offering this service in the
patient's home. Please contact Jo
Sanford on 032266123 for enquiries.

Day Activities Programme for
the Elderly
Every Monday & Tuesday
Please phone for further information

District Nursing
Available as required by referral



Rabco Ag Ltd – 021 362 766 – admin@rabco.nz
Agricultural Contracting Specialists - Western Southland



**Full silage
& baling
service**



Cultivation – including Direct Drill & Precision Drill



Effluent – Excavators - Hedgetrimming



Hens for Sale \$13 each

18 month old Brown Shavers

Ex-commercial layers from Te Waewae Eggs
True Southland Free-range

The next lot of chickens available will be available at the beginning of June, and every two months after that.

Ph Rob 03 226 6805 or 022 044 2086



TUATAPERE HANDYMAN SERVICES

Barry Bennett
(03) 226 6730

- **Painting - Interior/Exterior**
- **Waterblasting**
- **Spider & Fly Spraying**
- **General Repair Work**
- **Lawnmowing**
- **Weed Spraying**



WANTED TO BUY

Possum Fur, Hard deer,
Antler, Deer Velvet.

Phone Leith 027 496 3721

Tuatapere Freight

LOCALLY OWNED & OPERATED

RUNS MONDAY TO FRIDAY
WEEKENDS BY ARRANGEMENT

Phone Brandon
027 436 4360



The Adventures of Charlton



On our very long flight from Vienna to Hong Kong I got to see the top of Mt Everest peeking through the clouds as I looked out the window on the plane.

From the old-world European charm to this bustling Asian city. I have never seen so many high-rise buildings in one spot anywhere else in the world. Sooo many people live there, and it is just a small island. It used to be a colony of Great Britain, until the 99-year-lease of the land ran out in 1999 and Hong Kong was returned largely to the administration of its motherland China.

When we first arrived, we were picked up from the airport by a small bus with other tourists. The bus dropped off the different groups one by one at their respective hotels, dotted all around the city. We ended up being the last ones on the bus when the driver thought they had completed their tour. Not so, because we still needed to go to our hotel!

It turns out that the first stop the bus took was the hotel we were staying at, however, we had been given a totally different name to what the driver called out. So, we were taken all the way to the



beginning of the drop-off tour to our hotel. What that meant of course was that we got to see a great many places in the city that we were not otherwise be going to. Lucky us in the end, it was the best and longest city tour I have been on!

Very hot it was in Hong Kong and as I said, so very busy. People everywhere and on the move even late at night. The food is something to be talked about and very tasty. One evening our friends took us to a special restaurant and there the chef showed off his skill to make very loooooong noodles. Really, ... he made them by hand, pulling and turning and pulling and turning the noodle dough so many times, until they were very long, and they were very thin. I now believe the story that the Italian explorer Marco Polo many centuries ago brought back the long noodles that we now call Spaghetti from China to Italy :-)

We took the Peak Tram funicular railway up to Victoria Peak, high above the city. From there we could see the many big high-rise buildings and because we were much higher up then they reach, they looked all quite small. You see all over the harbor with its many ferries and ships. Also, we saw many junks, a type of Chinese sailing ship that has fully battened sails. Quite different from the sailing ships that I had ever seen. Walking through this busy city for days with so much to experience I was glad to get back home to quiet Brisbane. I dreamed for many nights about the noodle maker chef and the yummy food we ate.



Walnut Cake

Perfect for morning tea or when those visitors call in!

Ingredients

- 1 cup brown sugar
- 2 eggs
- 1½ cups self-raising flour
- 1 tspn vanilla essence
- ½ cup butter
- ½ cup milk
- 1 cup chopped walnuts
- ¼ tspn salt

Method

Cream butter and sugar.

Add egg yolks and milk, then sifted flour. Mix in well.

Add vanilla, salt and walnuts.

Lastly, fold in whites of eggs that have been stiffly beaten.

Bake for 45mins in a moderate oven - 180°C

When cooled, cover cake with icing. Add walnuts on top for decoration (optional).



Deb's Sewing & Repair Service

mending to making
and everything in between

Got a tricky job? Just ask!

Call or text **021 030 5667**



GOOD - CHEAP - FAST but you can only pick two

**YOUR BUSINESS CARD
COULD BE HERE!**

CONTACT

yourwesternwanderer@gmail.com

FOR PRICING/DETAILS



<https://ehive.com/collections/202139/central-western-murihiku-southland-archive>

Central & Western Archive

If you have photos or records of the district you can contribute for digitisation/sharing, please contact us on the following email:

CentralAndWesternArchive@gmail.com
or mobile phone: 027 211 4675



SINGH BUILDING LIMITED

Connor Singh

Licensed Building Practitioner
based in Tuatapere

027 942 9316

office@singhbuildingltd.co.nz

- New builds
- Renovations
- Decks
- Sheds

- Back country work; huts, bridges, and tracks



singhbuildingltd



singhbuildingltd



Agricultural Contractors servicing Western Southland and beyond.

BALAGE - SILAGE - GROUNDWORK - FEED TRADING
Nigel 021 226 6156 / fowlecontracting@gmail.com



Tim and Superior go the extra mile

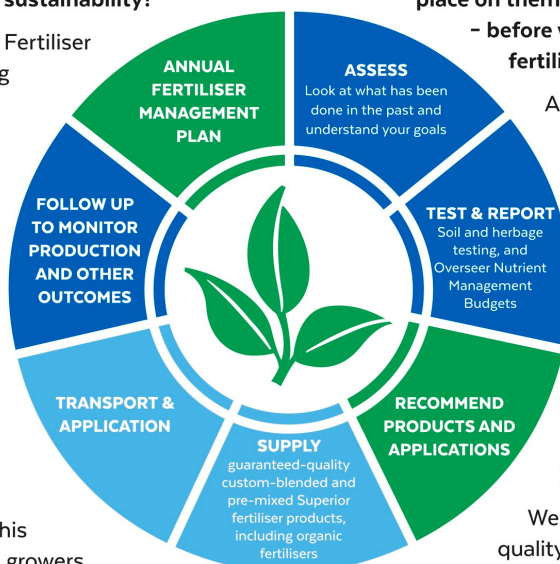
Are you frustrated with the lack of service from your local fertiliser consultant, peddling the same advice year after year regardless of your production outcomes, environment and sustainability?

Give **Tim Adcock** of Superior Fertiliser Specialists a call. He will bring a whole new meaning to service and client/advisor relationships.

Tim is a key member of the highly skilled Superior team totally committed to helping you develop healthier, more productive soils and plants.

We form a specialist fertiliser company that provides high quality advice and products at competitive prices. We have been doing this for South Island farmers and growers for just on 20 years.

Superior promotes a total soil care package. First, we get to understand the make-up, nutrient status and health of your soils, the demands you are going to place on them, and your production goals – before we apply one kilogram of fertiliser.



A comprehensive regime of vigorous soil tests will be undertaken and the results will provide the basis of a Superior Fertiliser Management Plan customised for your unique situation. This will complement your farm's Environmental Plan and provide the blueprint for an ongoing annual fertiliser programme.

We then supply guaranteed-quality solid fertiliser for your pasture and crops, monitor production and other outcomes, and update your Plans as required.

It's free to talk so don't hesitate to give Tim a call.
Phone 021 418 224



Tim Adcock
Fertiliser Advisor
Otago/Southland
021 418 224
tim@superior.net.nz

 FERTILISER SPECIALISTS
SUPERIOR
www.superior.net.nz

TUATAPERE SERVICE STATION

20 ORAWIA ROAD

PHONE: 03 2266475

HYDRAULIC FITTINGS & HOSES

We stock a good range of crimp on hydraulic fittings for agriculture hoses, we can also repair or make up new hoses.

WHITEBAITERS

The season is almost here so start thinking about getting those nets out and checking them. We have plenty of mesh and ulstron netting if you need to recover them or come in and pre order your nets now



RIFLES & SHOTGUNS

We have the following rifles in stock and will consider any reasonable offers

1 x 270 Mossberg 4x4

1 x 308 Mossberg 100ATR

1 x H & R .17 Mach 2 Single Shot

1 X 20Ga Escort Semi Auto Shotgun

HOURS

Monday to Friday 8.00am to 5.00pm

DO YOU HAVE AN HOUR-ISH TO SPARE ... ONCE A MONTH?

We are looking for volunteers to deliver the Western Wanderer to letterboxes in the Tuatapere township each month (except for January!)

It's the perfect way to enjoy our beautiful town and fresh air plus get those steps in!

We deliver the WW on a Friday/Saturday - usually the first week of the month. Can't do it one particular month? That's ok, just let us know & we will find someone to cover your area!

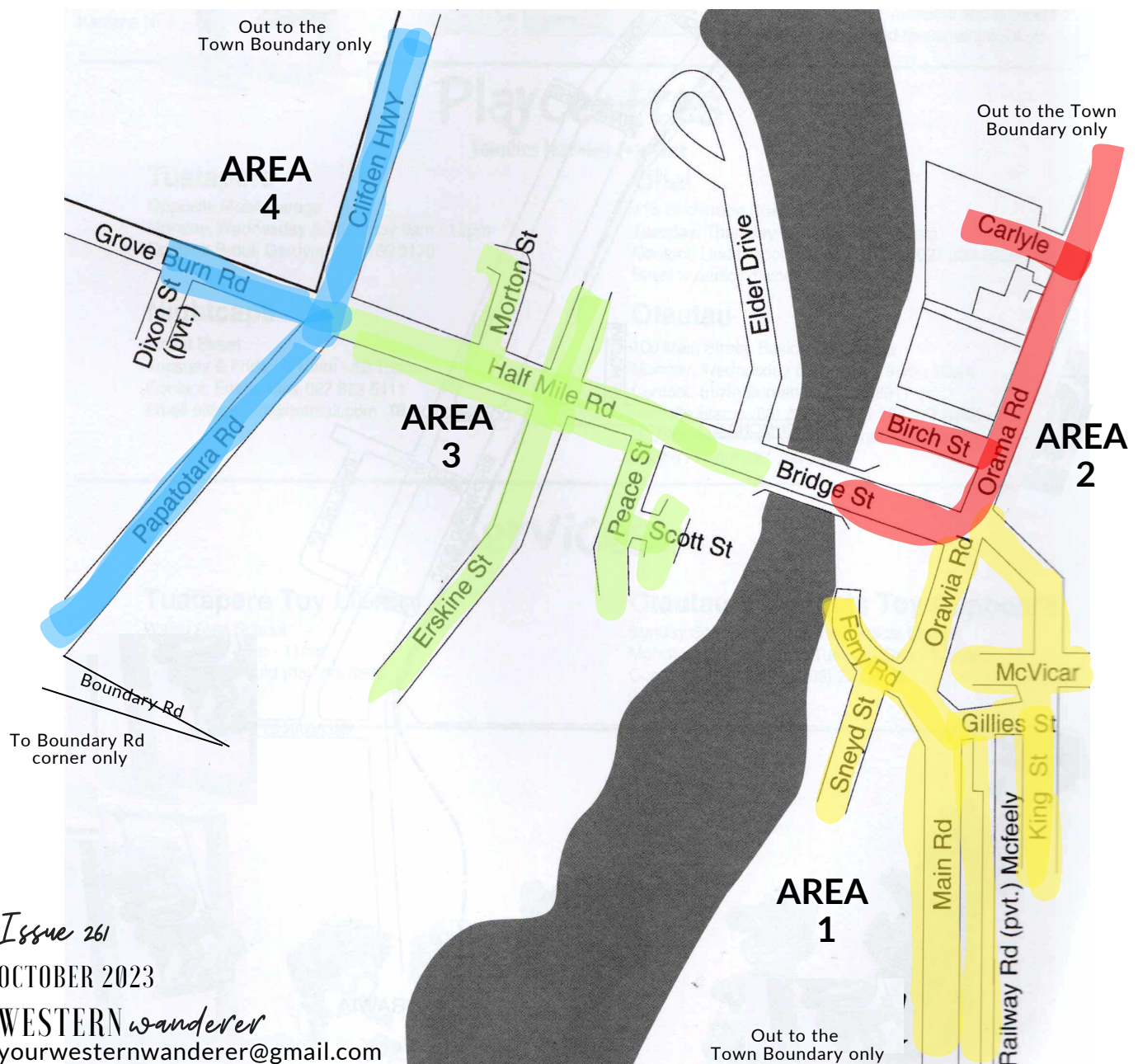
We have 4 areas to deliver to ... (See the map below)

- Yellow = Area 1
- Red = Area 1
- Green = Area 3
- Blue = Area 4

Perhaps you'd like to do two areas? Or just the one - we'd be grateful either way!

Does this sound like something you'd be happy to do on a regular basis?

Please get in touch with us - email: yourwesternwanderer@gmail.com



Issue 261

OCTOBER 2023

WESTERN wanderer

yourwesternwanderer@gmail.com