

WESTERN Wanderer

Tuatapere | Clifden | Orawia | Blackmount | Monowai | Colac Bay | Orepuki

Cover Photo: Aurora Australis, Western Southland, taken at 11:20pm, 27 February 2023.

Issue 255

At a glance ... what events are on this month?

APRIL 2023

MONDAY	TUESDAY	WEDNESDAY	THURSDAY	FRIDAY	SATURDAY	SUNDAY
					1 Tuatapere Community Market The Shed at the Well 10-1pm	2 SPOT COLOUR Run 11am Tuatapere Domain
3	4	5 Last day of Term 1 for HVPS	6 Last day of Term 1 for WAS Teacher Only Day for HVPS	7 ECUMENICAL EASTER SERVICE Tuatapere Presbyterian Church 10am	8	9 HAPPY Easter Duckshooters Shoot Western Southland Gun Club Pukemaori Ground 11am start
10 Easter Adventure (Need to register before 6th April)	11	12	13 Tuatapere Ladies Golf Club 27 hole Tournament \$30pp 9:15am for 9:30am tee off	14	15	16 JINGO! WAS PTA Fundraiser WTCC 2pm
17	18	19 Tuatapere & Districts Promotion Inc Meeting 7pm WTCC	20 Chat with Russell Bickley, from Riverton Menzshed at Tui Base Café 10am	21	22	23
24 Teacher Only Day for WAS & HVPS	25 Dawn Parade Service Orawia 7am 10am Service Tuatapere RSA Hall ANZAC DAY	26 First day of Term 2 for WAS & HVPS	27	28	29	30 Tuatapere Amenities Trust Funding Applications Close
	Coming up ...	Movement for Learning WAS Gym Tuatapere Free - 9 May Preschoolers: 10:30am - 12pm	Pink Ribbon Breakfast (End of May) WTCC	Tuatapere Districts Lions 31st Annual Hay Drive Friday 9th June 2023		

Special thanks to

COMMUNITY NOTICES & EVENTS

HANDY PHONE NUMBERS

EMERGENCY

POLICE /FIRE/AMBULANCE: **111**



MEDICAL CENTRE: (03) 2266 123

TUATAPERE POLICE STATION:
(03) 2269 020

TUATAPERE COMMUNITY WORKER:
027 757 5983

HAUROKO VALLEY SCHOOL OFFICE:
(03) 2266 753

WAI AU AREA SCHOOL OFFICE:
(03) 2266 285

TUATAPERE CEMETERY TRUST:
(03) 2266 065

CHAMBERS SERVICE STATION:
(03) 2266 654

TUATAPERE SERVICE STATION:
(03) 2266 475

TUATAPERE FOUR SQUARE:
(03) 2266 898

TUATAPERE OUTDOORS & HARDWARE:
(03) 2266 363

TUATAPERE LADIES GOLF

Debbie Fowle, Club Captain



It's true to say that numbers are slightly thin on the ground at Tuatapere like many small country clubs, but we still hold our own at tournaments, which is a positive. If you are interested in a hit or learning about golf please don't hesitate to contact Debbie Fowle, Club Captain.

February Results

"Fowle Contracting" LGU winner for February was **Chris O'Brien** with a lovely 100-31-66 also taking out the putting button with 30 putts, 9 holes went to **Steph Symonds** with an awesome 50-26-24.

1st Medal Ag for the year went to **Lynette Chambers** with 92-19-73 & again **Steph Symonds** had a lovely 56-24-32.

March Results

"Fowle Contracting" LGU winner for March was **Sharon Hampton** with a 90-22-68, putting was won by **Lynette Chambers** with 27 putts, 9 Holes went to **Jenny Cade** with 58-26-32.

Scott Cup winner for March was **Sharon Hampton**, 9 Holes **Jenny Cade**.

Home Stableford for March were **Wendy Stevens** 37, **Lynette Chambers** 35, & **Christine O'Brien** 35.

Nancy McCormacks (this is a NZ competition in pairs with alternate shots) over 36 Holes!! 16km walked in slightly damp conditions Winners were **Bronnie & Jacqui Chamberlain**. Runners up **Sharon Hampton & Debbie Fowle**.

Also congrats to **Tina van Engelen** who competed at the NZ women's senior matchplay in Whakatane, Due to the cyclone, it was a condensed tournament.

Tuatapere Ladies have entered a team in Sunday pennants, a new matchplay format from Golf Southland. The team of **Jacqui Chamberlain, Lynette Chambers, Sharon Hampton** and **Bronnie Chamberlain** competed at Queens Park on the 26th, slightly damp conditions they came away with 1 win & a draw. Good luck for next time.

We have our annual 27 Hole tournament coming up in April. This is a big job for our ladies but we do a fantastic job and are known for our hospitality.

Tuatapere Ladies Golf Club

27 HOLE TOURNAMENT

THURSDAY 13TH APRIL



Entry Fee: \$30 pp – Two's extra, includes morning tea, rolling lunch & afternoon tea + fantastic company



Field called: at 9.15am for a 9.30am tee off

Entries to Debbie Fowle on 027 5255052 or d.fowle@xtra.co.nz before Monday 10th April

Ties will be decided on countback, late cancellations are liable for half entry fee

Carts: available to hire for \$20.00 please advise on entering

Look forward to seeing you, our club would like to acknowledge our generous sponsors & members for their contribution

Get your car washed, dried and windows cleaned. Price arranged on request!

Contact: Rex Hibbs Flat 1/26 Orawia Rd, Tuatapere

COMMUNITY NOTICEBOARD

TUATAPERE & DISTRICTS PROMOTIONS MEETING

The next meeting for the Tuatapere & Districts Promotions Inc is **Wednesday 19th of April, 7pm** at the Waiau Town and Country Club.

All welcome!

UPCOMING PINK RIBBON BREAKFAST

We are hoping to hold a Pink Ribbon breakfast at Waiau Town and Country Club at the end of May. More details soon!

Contact **Coke McCracken** on **021 351 181**



AMENITIES TRUST FUNDING APPLICATIONS

Application forms are now available from Tuatapere Service Station, Chambers Garage and Tuatapere Outdoors & Hardware.

Completed application forms need to be **submitted by April 30, 2023.**

The Trust wish to remind applicants that funding for wages, administration and operational costs or retrospective funding will not be granted.

The funds must be utilised for the benefit or betterment of residents within the Tuatapere Urban Resource Area.

THANK YOU!

We would like to thank the Tuatapere Lions Club for cutting up the trees we had fallen. So many turned up, even the oldest member Les Kollat. They had tractors, a digger, power saws & wood splitters. What an awesome lot of members you have. We're sure we won't run out of firewood anytime soon.

Thank again from Monica & Ray Laurie.

TUATAPERE COMMUNITY MARKET

First Saturday of the month. **10am - 1pm**
In the Shed at The Well.

Please text **027 297 4767** to book a \$5 table

TUATAPERE AMBULANCE

Did YOU Know?

The Tuatapere Ambulance is a funded service by the Tuatapere Lions Club, for the residents of Tuatapere & Districts.

Should you receive an account for this service from St John, please forward it immediately to:

The Treasurer

Tuatapere Lions Club

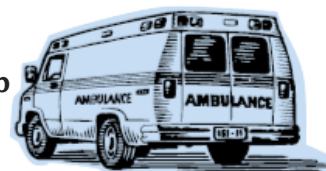
PO Box 47

Tuatapere

Sometimes we experience difficulty in receiving the invoices for YOUR trip - so PLEASE do forward them on to us.

Thank you!

**Tuatapere Lions Club Charitable Trust
Ambulance Committee**



WESTERN SOUTHLAND HEALTH SHUTTLE

The Western Southland Health Shuttle Service travels from Otautau, Ohai, Nightcaps, Tuatapere, Riverton - covering all of Western Southland. We also connect with the Invercargill-Dunedin shuttle.

The Western Southland Health Shuttle operates Monday - Friday (excluding Public Holidays).

Bookings are required by 3pm the day prior to transport.

Ph: 0800 103 046 to book.

Please book as soon as you receive your appointment.

TUATAPERE VOLUNTEER FIRE BRIGADE

We're on the lookout for members to join this rewarding organization. We are looking for persons who are, ideally, available throughout the day.

If you think that you would like to try this (sometimes lifelong) commitment, then please feel free to come and try it!

We train on Tuesday nights at 7:30pm during daylight saving and 7pm through the winter months.

We look forward to meeting with you.



COMMUNITY NOTICES & EVENTS

Tuatapere Presbyterian Church

2023 – how time slips by
Begin your year on a positive note
How about coming to church
on a Sunday?
A great fellowship and a
friendly welcome!
Are you searching for?
Is life a bit of a struggle?
Have things not quite gone your way?
Need somewhere to reflect and
rest your mind?
Need to ‘take a breath’?
How about joining with us
For a time of quiet fellowship
Waiau Valley Presbyterian Church
Main Road, Tuatapere
On **Sunday at 10.30 am**
A time to be, to reflect and refresh
All are welcome to join us
Make new friendships, create
new moments
Need to know more?
Phone or message
Lynley on 027 297 4767

The Small Job Man

Tuatapere Area

- Butcher-Boner
- Lawn Mowing
- Weeding
- Trimming
- Water Blasting
- Chainsaw work
- Wood splitting
- Small Building work
- Fence Painting

Senior Rates
Phone **John 022 164 8061**

WAIAU MEMORIAL LIBRARY

Library Hours: Fridays

10:00am – 11:30am

2:30pm – 4:00pm

7:00pm – 8:00pm



Tuatapere Community Pool

Access Keys:

Ian Laurenson 022 608 4764

Suzanne Norman 027 422 1521

Water Quality or Maintenance Concerns:

Trevor 027 203 7854

All other queries:

President: Minessa 027 311 2112

Prices for Season Pass:

Family (immediate family in one house) \$180

Buddy key (2 x unrelated individuals) \$180

Senior Citizens Buddy Ticket \$150

Access Tag \$15

Or

One week family key hire \$30 **plus**
\$15 access tag (refundable on return)

2 hour hire \$5/adult + \$3/child **plus**
\$15 access tag (refundable on return)

CALLING ALL LOCAL COMMUNITY GROUPS SPORTS TEAMS / CODES ETC

It's free to advertise your local group, sporting team/code in the Western Wanderer! If you want to share the results of a game and/or tournament or celebrate the achievements of a team member or player - we can print that too! Email yourwesternwanderer@gmail.com by the 20th of the month prior & we'll also add any event notices to the Community Noticeboard for the next issue!

PLEASE HAVE YOUR ARTICLES, NOTICES, OR UPDATED ADVERTS FOR THE
WESTERN WANDERER SENT IN BY

20th of APRIL (for the May Issue)

POP UP SHOP

Quality second hand goods
Affordable prices

APRIL

OPEN the 1st and then CLOSED until the 21st when the usual hours return
OPEN FRIDAYS AND SATURDAYS
10am to 4pm

Tuatapere Presbyterian Church Hall, Main Road, Tuatapere. Enjoy a cuppa and a chat while there.

HOUSEHOLD ITEMS, CLOTHING, SHOES, BOOKS, LINEN, TOYS, AND MORE.

CHECK OUT MY WEEKLY FACEBOOK POST FOR A SELECTION OF THE ITEMS AVAILABLE.

Donations of items always gratefully received.
Thank you for helping us help the community.
Drop off at the church or for other options contact me. Carol Diack 021 110 1835

COMMUNITY NOTICEBOARD

COLOUR RUN



Sunday 2nd April 2023
11am
Tuatapere Domain

JOIN US FOR SOME GREAT FAMILY FUN.

SAUSAGE SIZZLE LUNCH PROVIDED

\$20
PER FAMILY

WEAR WHITE

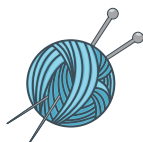
KEEN FOR A GAME OR WANT TO LEARN CHESS?

Sundays 3-5pm at Last Light Lodge
Gold coin donation appreciated!
See you Sundays - just turn up!



WESTERN SOUTHLAND WOOLCRAFT GROUP

Spinning, Felt, Weaving, Knitting, Crochet.
Other crafts welcome!
1st & 3rd Wednesday of the month.
10am - 3pm. \$3. BYO Lunch.
Scout Den, Erskine Street.
For details please contact:
Helen Todd 022 103 9327



NEED A JP?

The following Justices are available by appointment:

Tuatapere - Keri Potter - 027 526 3137

Te Waewae Bay - Shirley Whyte - 027 504 5220

Blackmount - Nicky Baker - 027 643 5880



TUATAPERE & DISTRICTS LIONS CLUB PROJECT



SUPER DIRT

Bags @\$8.00 ready for your garden

Pea Straw
Conventional
Bales
\$10 per bale



Super Dirt can be collected from
Rabco's Yard, Groveburn Road

Pea Straw by arrangement

Phone Shirley or Stephen
(03) 226 6817



TUATAPERE COMMUNITY WORKER

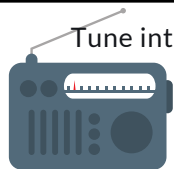
Room 5 Medical Centre
69A Orawia Road

Monday - Thursday 10am to 3pm

Keri Potter 027 757 5983

Email: tcworker@xtra.co.nz





Tune into Tuatapere's very own Radio Station

88.2 FM - Tui FM!

Hits of the 80's & 90's and
today's current music!

SALVATION ARMY FAMILY STORE TRUCK

The Salvation Army Family Store Truck will come out and collect large amounts of your pre-loved furniture & other household items. This service is free. Please call the store to organise your visit on **03 214 5380**



**Family
Store**

Donate. Buy. Help.

familystore.org.nz



COUNTRY CORNER CRAFTS

Come in and browse and see what we have to offer. Hats, scarves, children's knitwear, cards, jewellery, woodware, sewing, jams, pickles, sauces, etc.

Tuatapere souvenirs "On Natures Edge" logo are always available.

Is anyone interested in joining to sell their crafts? You are more than welcome to contact us.

Want to volunteer your time & work in the Craft Centre - let us know! It's a great way to meet people! If you wish to view the shop and it is closed, please ring the ladies below to open it for you.

Louise Greber (03) 668 6001 or

Lyla Sherriff (03) 226 6187

TUATAPERE ENVELOPES

Envelopes printed with the "Tuatapere on Natures Edge" Logo can be purchased at Country Corner Craft Shop 1A Orawia Road. **Cost \$4.00 per 10**



SOUTHLAND COMMUNITY LAW CENTRE

Free legal information and advice for the community of Southland. 2nd Floor, Cue Building, 33 Don Street, Invercargill. Phone **(03) 214 3180**

Freephone: 0800 550 800
(outside Invercargill city only)



COMMUNITY NOTICEBOARD

A TIME TO CELEBRATE HOPE

We live in uncertain times

We have lived through uncertain times

Now is the time for thankfulness

ECUMENICAL EASTER SERVICE

At - Presbyterian Church, Main Rd, Tuatapere

When - **Friday 7th April - Good Friday**

Time - **10am**

All Welcome on that special day

Questions - contact **Lynley** on **027 297 4767**

KEEN TO GIVE SQUASH A GO?

Great exercise & social time!

We are practicing on Mondays.

Everyone more than welcome!

If you need more information, please contact:

Men - **Sam Egerton 027 250 5477 or**

Women - **Rebecca Robertson 027 424 6129**



INDOOR BOWLS

Waiau Town & Country Club Indoor Bowls are desperately needing more members weather your young or old it's a game for all. School kids also welcome!

Practice nights **Mondays 7.30pm** - be good to see some new faces! Full coaching provided. Please email jessejculbertson@icloud.com

WESTERN SOUTHLAND CATHOLIC MASS

Held **Fridays** at **4.30pm** in the Anglican Church corner of Orawia Rd and Birch St Tuatapere.

We are a friendly, lively group of people and everyone is very welcome to join us especially those who are visiting the area.

Grateful thanks also to the Tuatapere Anglican Community for sharing their church facilities with us.

Fr Brendan Ward (Parish Priest) Ph: **03 218 4123**

Email: basilica.invercargill@gmail.com

Fr Jaewoo Lee (Asst. Priest)

027 309 422 (Text preferred)

COMMUNITY NOTICEBOARD

TUATAPERE PLAYGROUP

Tuatapere Playgroup welcomes all 0-5 year olds & their parents/caregivers to come join the fun!

You'll find us at **23B Orawia Road, Tuatapere**



TUATAPERE PLAYGROUP

TERM 1, 2023 LEARNING PLAN

THEME: MESS IS THE BEST — LEARNING THROUGH MESSY PLAY

TE WHARIKI PRINCIPLE FOCUS: EMPOWERMENT

TE WHARIKI STRANDS FOCUS: COMMUNICATION & EXPLORATION

Date	Theme	Activities
10 th February	Be My Valentine	Create a valentines day themed craft for someone special.
17 th February	Foot Loose	Create a mural by painting with our hands and feet ... and any other body part we dare to get mucky!
24 th February	Icy-cool	Explore frozen slabs of ice and discover what may be hiding inside! How will you get it out?
3 rd March	NZ Sea Week	A trip to Colac Bay to explore the rock pools. What will we find? Followed by a sausage sizzle for lunch.
10 th March	Mud Glorious Mud	Create 'mud' using cornstarch and cocoa and then hold a muddy car race! Whose car will be the winner?
17 th March	Rainbow Spaghetti	Cook and then dye some pasta spaghetti then use it for sensory play.
24 th March	Anzac Day Art	Create some ANZAC Day themed art work (to display at the RSA Hall on ANZAC Day) and a wreath to present on behalf of Playgroup.
31 st March	Easter Egg-tastic	Make Easter themed crafts and have an Easter egg hunt. Followed by a shared morning tea to finish off the term.



We provide a warm, friendly atmosphere for children to form bonds and learn alongside each other and a place for parents to connect.

For more info message our Facebook page or contact Gemma on **022 040 3368**

CLIFDEN PLAYGROUP

45 Otahu Eastern Bush Road. Join our FB Group to check if it's on: **Wednesday (during School Term) 9:30am - 12:30pm**. All mothers and children welcome. Bring packed lunchbox for your child's morning tea. Contact: Sarah **027 699 5234**

TUATAPERE TOY LIBRARY

Tuatapere Toy Library has been a toy swap/hire service provided to the young families of Tuatapere and surrounding districts since 1989.

The purpose is to create opportunities for the little people of our community to have accessibility to toys. A small contribution of an annual membership allows families to join the group and have access to the toys. For more information or questions please text or ring **Nathalie Pahl on 027 4759 075**



TUATAPERE HEALTH & GIFT SHOP

(part of Riverton Pharmacy)

69a Orawia Road

(beside the Medical Centre)

Ph: **(03) 226 6999**

12:00pm - 5:30pm Mon-Fri

Good selection of Vitamins, Giftware & Over-the-counter healthcare

First prescription drop-off from 1:30pm

Second prescription drop-off 4:30pm

SENIOR CITIZENS

Senior Citizens is a group of over 50s that meet every **Friday afternoon at 1pm** at the rooms behind the RSA Hall. We are always looking for new members so if you would like a fun afternoon playing bowls, cards or just catching up with friends, come and join the group. **If you need a ride - we can pick you up!** Contact: Olive Bennett **(03) 2266 477** or Alison Bennett **027 224 2724**

Max's Lawn Mowing Services

Available: Weekdays 3pm til dark
Weekends 9am til dark

Prices depend on size/time spent doing the lawn

Contact Loretta (my mum) **027 462 9527**

For the Tuatapere area



Looking for a babysitter or someone to mow your lawns?

Well, you're in luck!

**I'M A RELIABLE TEENAGER
LOOKING FOR SOME WORK**

Contact Jay on 027 242 2890

ESSENTIAL OILS 100% PURE GIFTS OF NATURE
Florals Trees Plants Herbs Spices Citrus

To learn more, phone or text your local Wellness Advocate
Carol Erskine Papatotara **0274 599 654**





Neat Cut

Phone: Anita Green 027 506 2418
 Tuesday 9-5pm, Thursday 10-8pm, Friday 10-5pm - Appointments are encouraged.

COMMUNITY NOTICEBOARD



ANZAC DAY DAWN PARADE & FULL SERVICE

We are back to being able to have a full service again and full gatherings so we will be holding the Dawn Parade Service at Orawia, 7am, April 25th, with a cup of tea at the old Orawia Keystores building, followed by our regular 10am Service in Tuatapere at the RSA hall and a cup of tea and nibbles afterward.

As always we will be taking up a collection at the 10am service and also presenting the successful applicant with a Bursary deposit to go towards their tertiary education.

Please keep an eye out for the poppy day appeal collectors when they come as there will also be collection boxes at various establishments around Tuatapere.

TUATAPERE RSA POPPY APPEAL 2023

So many of us no longer have cash these days, we are trying to make it easier for all concerned that want to keep supporting the poppy day appeal.



You can donate via internet banking to:

Account Name: **Tuatapere RSA Inc.**

Account Number: **06 0958 0007999 00**

*Please put the word **POPPY** into the reference column so we know it is for the ANZAC poppy day appeal.*

We thank you for your kindness. These funds go towards supporting our local community.

TUATAPERE RSA ANNUAL SUBS 2023

To all members of the Tuatapere RSA we would like to remind you that this year's membership fees of **\$25.00** are now due.

Payment method is easy now. You can pay via internet banking:

Account Name: **Tuatapere RSA**

Bank Account Number: **06 0958 0007999 00**

*Please put your name and the word **SUBS** into the reference and code column.*

Treasurer

Margaret Thomas 3 McVicar St, Tuatapere. 9620

Email: arpad@xtra.co.nz



CHAMBERS REPAIR SERVICE
45 Half Mile Road, Tuatapere
Ph: (03) 226 6654

- 24 hour Self Service Fuel
- Full Mechanical Workshop
- NZ Post Centre
- Agents for Wide Span Garage

EASTER HOURS
CLOSED:
Friday 7 April - Tuesday 11 April
REOPEN
Wednesday 12 April

HAPPY EASTER

MTA Gift Vouchers Available

PLATE PASTURE METER READING THAT'S QUICKER AND EASIER, WITH AT THE GATE REPORTS
METER SERVICES
 TROUGH CLEANING SERVICES

- Specialist in quality pasture meter reading with advanced sensor technology
- Provide 200 measurements per second or 18,500 readings over a single 500m pass
- Provides a fully integrated electronic support system
- Provides a secure web-based storage of information with easy access
- Prompt generated feed wedges for rapid decision making and seasonal comparisons
- Generate reports at the gate, supplying valuable pasture cover data and comparable results every time
- Improve health & increase animal hydration
- Enhance production & improve water quality
- Reduce bacterial/algae contamination of trough water

CLEAN TROUGH WATER MEANS IMPROVED LIVESTOCK HEALTH

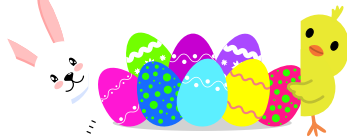
Now 2 bikes available for pasture metering



Brett George • P 027 351 3408
 E platemeterservices@gmail.com

EASTER ADVENTURE IN TUATAPERE!

Laura and Karina Gerzabek



Dear Parents

We would like to invite you to our Easter Adventure in Tuatapere! We will be painting, searching for easter eggs and eating them together, as well as playing fun games. There's even an Easter basket to be won!

The event will take place on **April 10th, 2023** from **10am to 1pm** and is suitable for children aged **7-12 years**. Please register your children in advance as the **deadline for registration is April 6th**.

The cost is **\$25 per family**, and if you would like to participate in a raffle, it will be **\$30 per family**. Please bring a water bottle with you.

To register, please send an email to karinagerzabek@gmail.com. Once you have registered, you will receive further information on the exact location of the event. Please note that spaces are limited, so we recommend registering early.

We look forward to having a great time with your children!



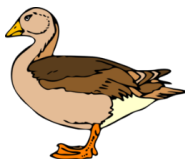
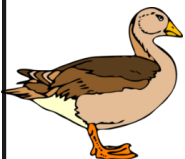
DUCKSHOOTERS SHOOT

Western Southland Gun Club

Pukemaori Grounds

Sunday, 9 April

11am Start



SPONSORED BY CUSTOM GUNS

60 Targets – Sporting Clays

ENTRY \$45 - Supply own ammunition

Safety Glasses & Hearing Protection **REQUIRED**

NO slings or mag extensions

BBQ Lunch available

Good prize for drawn score

Any enquiries contact **Des Chambers**

(03) 226 6654 - Work Hours

(03) 226 6655 - Evenings

**SOUTHERN
SPARX**
ELECTRICAL

CLAYTON PRIME

Registered Electrician

📞 021 951 365

✉️ southernsparx@gmail.com

For bookings contact

Rochelle 📞 021 588 257

DOMESTIC | COMMERCIAL | INDUSTRIAL

HEATPUMP SERVICING

Contact Nic on

027 3200 782



MR STEEL

TUATAPERE

PH: 027 276 6816

MALCOLM

**For all your engineering,
steel fabrication and repair needs!**

FORDE WINDERS SHEARING LTD

Available for all new and existing clients

For all your shearing and
crutching requirements

Please phone

Darin Forde 027 229 7760

Jeremy Winders 027 231 4299



**BEN MCMASTER
BUILDING**

Ph: 027 202 7955

benmcmaster@live.com

- Licensed Building Practitioner
- Sheds, renovations & new homes
- Based in Western Southland

You dream it, we'll build it



HARRY'S
MACHINES
EARTHWORKS
027 304 3714





* 13 Tonne Digger * 5.5 Tonne Digger * 2.7 Tonne Digger - dry hire or operated
* Tip Truck * Bob Cat * Augers * Post Driver * Tree Saw & Hedge Trimmer

* Tree Trimming * Post Driving * Fencing * Cleaning of Wintering Sheds * Site Clearance * Cartage * Graveling * Lane Maintenance * General Earthworks

For all enquiries and bookings please contact Lance or Alice Harris
Lance: 027 304 3714
Alice: 027 270 0363
Email: lanceharris533@gmail.com
Check us out on facebook- Harry's Machines

Shearing
magazine
Des Williams (editor)



Tel 07 839 2891 : Mob 0274 833 465
Email : shearingmag@xtra.co.nz
Member NZ Guild of Agricultural Journalists and Communicators (Inc)

LAST SIDE PUBLISHING LTD
PO Box 102, Hamilton 3240, New Zealand

**PAUL ANDERSON
BUILDER**

AVAILABLE FOR ALL YOUR
BUILDING REQUIREMENTS.

NO JOB TOO SMALL.
COMPETITIVE RATES.
REFERENCES AVAILABLE!

Mobile: 027 890 3602
thetakis@outlook.com

IN & AROUND THE COMMUNITY

THE ROAR 2023

Lindsay Youngman



Well it's quickly coming up to the best time of the year as a hunter. The Roar, Bugle, Rut, and duck shooting are just around the corner. The roar is a very busy time in the bush, all should be wearing High-Viz (not duck shooting) and an extra High-Viz to wrap over any deer while carrying out if successful.

Firearms have featured in the news lately. Transporting laws for firearms in vehicles have changed for the better. (The prior laws were that firearms were not meant to be left in the vehicle unattended).

- The firearm must be out of sight. Unloaded.
- Bolt must be out.
- Ammo separate in a locked container.
- No loaded magazines, whether in rifle or not.
- Secure to vehicle, a pushbike cable lock through the trigger guard and secured to the vehicle is a good step.

All police responsibilities for firearms have been transferred to a new business unit - The Firearms Safety Authority, also known as Te Tari Pureke. See their website

www.firearmssafetyauthority.govt.nz

Also, check the expiry on your firearms licence now! It's up to a year to renew!

Remember the firearms rules, and especially identify your target.

Everywhere you hunt, you must either have a permit, or permission from the landowner.

Remember take out the hinds, and leave that promising young stag - he may be a trophy next year.

Happy hunting!

**PLEASE HAVE YOUR ARTICLES, NOTICES, OR
UPDATED ADVERTS FOR THE
WESTERN WANDERER SENT IN BY
20th of APRIL (for May's Issue)**

Ratty Presents ...

A



COMPETITION

Did you know that there's an International Dinosaur Day? It's the **1st of June**. I thought it would be fun to have a competition to celebrate. Why?

Because Dinosaurs are AWESOME!

All you have to do is make your favourite Dinosaur out of Paper Mache!



I've asked the Librarians to get some prizes for the best Dinosaurs made.

All entries have to be at the Waiau Memorial Library by **26th May**.

The winners will be announced on the **1st of June** and all the Dinosaurs entered will be put on display at the Library. How cool is that?

I'm going to make a Paper Mache Dinosaur as well. I'll be posting it on the Library's FB to show everyone what I'm doing. You'll be able to ask me questions as well.

Keep an eye out in the Western Wanderer and Facebook for more information or you can talk to the Librarians at the Waiau Memorial Library.

Silly Ratty, I nearly forgot, the competition is open to kids aged 5 - 15 years.

Have Fun!!

Waiau Town & Country Club

<https://www.waiautownandcountryclub.co.nz>

Phone: **03 2266 489** | Address: 41 King St Tuatapere

✉ waiautcc@gmail.com | facebook.com/waiautcc



Courtesy Van Available

Club Opening Hours

Mon - Thurs 4pm till close.

Fri 3pm - close.

Sat Noon - close.

Sun 3pm - close.

New Members Always Welcome!

Just pop in or call the club for a nomination membership form.

Annual membership 2022/23 is \$50 p/p or \$30 p/p for pensioners.

Bistro Hours



Thurs: 4 - 9pm*

Fri: 3 - 9pm*

Sat: 1 - 9pm*

Sun: 3 - 9pm*

(*Bistro may close from 7:30pm onwards if not required)

We are the perfect place for your functions/birthdays!

Keep an eye on our Facebook Page for more details on upcoming events ...

We can cater! Call us to discuss options! 03 22 66 489

Play

jingo

It Rocks!

A FUNDRAISER FOR
WAI AU AREA SCHOOL
AT

WAI AU TOWN AND COUNTRY CLUB

16 APRIL 2PM



RAFFLE TABLE PRIZES AVAILABLE



Agricultural Contractors servicing Western Southland and beyond.

BALAGE - SILAGE - GROUNDWORK - FEED TRADING
Nigel 021 226 6156 / fowlecontracting@gmail.com

WAIAU HEALTH TRUST – April 2023

Medical Centre

Flu Vaccines 2023

Flu Vaccines are now available at the practice. We will be having clinics on the following dates:

Tues 4th April – 2pm to 7.30pm (TUATAPERE clinic)

Wed 5th April – 7pm to 8.30pm (OHAI clinic)

Wed 19th April – 9am to 4.30pm (TUATAPERE clinic)

Please phone to book your appointment. In many cases it is free. The cost of an unsubsidised flu vaccine is \$36. Immunisation is the best way to protect our communities from infection and serious illness.

COVID Vaccinations

We are no longer administering COVID vaccines in clinic. If you require a booster, please seek a vaccinating facility on bookmyvaccine.health.nz

Bexsero Vaccinations (Meningococcal B)

The Meningococcal B vaccine is now funded to protect against meningococcal disease in children up to 12 months of age, and will be administered as part of the childhood immunisation programme. We will be completing a catch-up schedule for those under the age of 5. You will be contacted by a nurse if your child is eligible.

Bexsero will also be funded for those aged 13-25 years who are entering into, or are already in, their first year of specified close-living situations, such as boarding school or university halls.

Please phone and discuss with a nurse if you have any queries.

Home-Based Maternity Care

This is a service provided for mothers and new babies within Tuatapere & surrounding areas. We provide support in all aspects of having a newborn within your home. Please phone the Medical Centre if you wish to discuss further.

Kind Regards

Jo Sanford (Manager)

Cell: 0272950429



Waiau Health Trust
69a Orawia Road, Tuatapere
Approved Registered ACC Provider
Monday to Friday
9:00am – 4:30pm
Ph.: 2266123

Practitioner Hours
Amanda McCracken (NP) – every
weekday

Sheryl Eden (NP) – every Monday &
Tuesday

Physiotherapist
Tuesdays & Thursdays
Phone for an appointment

Podiatrist
Visits regularly –
Phone for an appointment

Warts/Minor Skin Lesions
Liquid Nitrogen treatment available
Phone for an appointment

Homebased Maternity Care
We are offering this service
in the patient's home.
Please contact Jo Sanford
on 2266123 for enquiries.

Day Activities Programme for
the Elderly
Every Tuesday & Wednesday
Please phone for further information.

District Nursing
Available as required by referral

Rural Lifestyle Residential
For all your Shearing Services.

SKIPPER Contracting
TAKITIMU

**No mob too big
No mob too small
We do it all!**

**Contact Ricky Skipper to book in now
027 351 2620**

Specialising in
Dairy Conversions
Rural Fencing
Post & Rail

H Gill Fencing,
Eastern Bush
Phone 021 225 5489
After Hours 03 225 5488
Email hamish@hgillfencing.co.nz

FCANZ
Fencing Contractors Association NZ
Member

Shirley Whyte
Your local real estate specialist living & working in Western Southland
now also an Accredited Justice of the Peace.

for:

Friendly service, reliability, sound local knowledge
in Western Southland, Te Anau & Stewart Island
All enquires welcome - all calls answered

Harcourts
Harcourts Real Estate Ltd Licensed Agent REAA 2008

M 027 504 52200 O 03 214 4080
E shirley@harcourtsinv.co.nz
W www.harcourts.co.nz

accelerate
PHYSIOTHERAPY

office@acceleratephysio.co.nz
40 Deveron Street, Invercargill
(off street parking)
0800 291 475

Accelerate is a gentle form of exercise, effective in providing long term solutions
after an injury, especially low back pain.

We have interests in:

- > Spinal/Back & neck injuries
- > Sporting Injuries
- > Running, Cycling & Multisport
- > Men & Women's Pelvic Health
- > Acupuncture
- > Balance & Dizziness
- > Workplace Injuries / Ergonomic Onsite
- > Work Evaluations & Educations
- > Pilates

Joel Barnes
BPHYT, BEXSCI

Andrea Robertson
BPHYT, PG Cert ACUP

Andrea Murray
Dip PHYT Dip M.I.

Find us on facebook

www.acceleratephysio.co.nz

Hauroko
VALLEY PRIMARY SCHOOL

KIA ORA, NI HAO, KAMUSTA
Western Wanderer Readers

Thank you for your support of our school's major fundraiser "The Blackmount Trail Ride". We certainly had a massive day with over 400 riders. It was a beautiful community event for families to enjoy together, amongst spectacularly special scenery. We are incredibly grateful to our supporters/sponsors. From our land owners sharing their landscapes, to sponsors with auction or raffle prizes, our school community for marking tracks, marshalling, registration, cooking, etc... Well done to Hauroko Valley Primary's Home and School team for their phenomenal planning! See you again in 2024.



A group of nine athletes headed over to Rakiura, Stewart Island to take part in the Rural Schools "The Great Southern Race" Triathlon. Our teams consisted of one Mixed Year 7 team - Libby, Tomas, and Sienna, a Mixed Year 8 team - Sierra, Lily, and Jake and a Year 8 boys team - Hugo, George, and Cormac. What a unique opportunity created by Kath and the team at Halfmoon Bay School. This was our second year competing in the event and we look forward to heading over again next year. Thanks to Real NZ for their generous support.



HAUROKO HAPPENINGS

Thanks to S.P.O.T. who provided us with an opportunity to meet Farm4Life's, Tangaroa Walker. He shared his journey in life, his social media sharing of positive messages and learning about farming, and his aspirations for the future. This photo captures the humour and fun our students had while listening to his anecdotes as part of focusing on hauora/wellbeing - Health Education.



Good Luck to the following who have qualified to represent Western Southland at the Southland Primary School Athletic Championships. Well done, Cormac, George, Hugo, Daniel, Lily, Libby, Briar, Sienna, Jake, James, Elly, Fergal, Oliver, Flynn, Isaac, Finley, Angus, Georgia and Jake.



We wish our AgriKids teams all the best as they head to Middlemarch for the Otago/Southland AgriKids Competition. In teams of three, our students complete a range of agriculture food and fiber modules all vying for a place in the 2023 Young Farmers Grand Final.

Good luck to our teams including;

- **Hauroko Farmers** - Boe, Dusty, Angus
- **Western Farmers** - Finley, Daniel, Maddi
- **Southern Boys** - Tomas, Sam, Oliver
- **The 3 Western Girls** - Sierra, Sophie, Elly
- **Out West** - Jonty, Louie, Cassie

We look forward to sharing more of our learning adventures with our Western Wanderer whanau soon!



Registered ELECTRICIAN

For all electrical work
No job to small
A/Hours service available

Jay Brownlee
8 Carlyle Street, Tuatapere 9620
A/H 03 226 6673
Mob 027 4965 863
sparkieintuatapere@gmail.com

For all your Accounting and Tax Solutions

Ask for Janice or Trevor England

 **03 2266110**

Aparima Accounting Ltd
57 Main Road Tuatapere

CANTERBURY CARS **4WD** Specialists

For all your vehicle requirements

Cars, utes, 4WDs, vans

Finance available

Contact: Murray Dowling
027 556 2655

Visit our website
www.canterburycars4x4.co.nz

Sewing and Mending Services Available

Experienced machinist offering fast, reliable service with very reasonable rates.

I will mend/make anything from zip replacements to curtain making - just ask!

Free quotes and pick-up delivery service within Tuatapere.



Contact **Deborah**

(03) 226 6783 or 021 0305 667



From Granny's Cookbook

Zucchini Fries

Got extra zucchini in your garden? This is a great way to use them up!

Ingredients

- 1-2 zucchini
- 1 cup Panko
- ½ cup Parmesan
- 1 Tbspn Basil
- 1 tspn Garlic Powder
- 1 tspn Salt
- 1 tspn Pepper
- 2 eggs - beaten

} Dry Ingredients

Method

Slice zucchini(s) into sticks.

In a bowl mix all of the dry ingredients with a whisk.

Dip zucchini sticks into the beaten egg then roll in the dry mix.

Place on baking paper on a tray and bake at 220°C for 20 minutes.



CC Attribution: <https://www.flickr.com/photos/willfolsom/5956179060>

INDEPENDENT MIDWIFE

ISOBEL DEVERY

*Caring for women throughout
Pregnancy, Birth till six weeks
Post Natal.*

*Choices for place of birth,
Home or Winton Birthing Units
or Kew Hospital.*

*Free pregnancy tests
available on request.*

**Phone: (03) 22668822
027 2267020**

©Pecoraro, EthicGraphics®



DAGWOOD DAGGING

Available now to all new and existing customers for all your crutching requirements.

3 Stand or Single trailer available
7 days a week, wet or dry.



No job too big or too small.

Competitive rates

Jeff Chambers

027 3042 241



Rabco Ag Ltd – 021 362 766 – admin@rabco.nz
Agricultural Contracting Specialists - Western Southland



**Full silage
& baling
service**



Cultivation – including Direct Drill & Precision Drill



Effluent – Excavators - Hedgetrimming



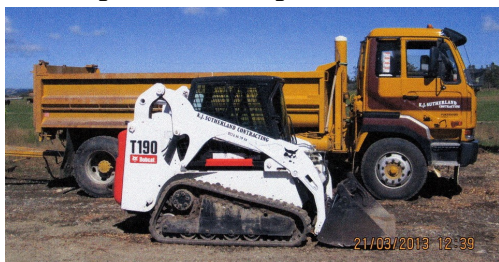
K.J. Sutherland Contracting

Bobcat T190

With attachments: Landscape Rake,
Augers and Trencher

Suitable for all landscaping, shed and yard
maintenance

Muck-spreader and tip trailer available



PHONE KEVIN
027 367 934 / (03) 225 5716



TUATAPERE TE WAEWAE Community Board

Anne Horrell, Chairperson

Contact: 021 216 9808 | altonlea.horrells@xtra.co.nz

'Well Done' to Nathalie Pahl and her great team of helpers who organised another very successful 'Great Tuatapere Duck Races' event as a fundraiser for the Toy Library. We look forward to seeing the newly purchased 'Duck Race Flags' flying brightly before the next occasion. Congratulations to Community Board Member Wayne Edgerton who was awarded the 'People's Choice Award' for the second year in a row at the Christchurch Art Show. It has always impressed me that in the bigger scheme of things Tuatapere people shine.

Community Board news includes:

Councillors' visit to Tuatapere. Most District Councillors and staff members completed a tour of Southland. Thank you to Community Board members Blayne de Vries and Paula McKenzie who met with the group during a brief stop at Tuatapere. It was noted that, "It was fabulous to see the passion Southlanders have for their communities and it was heartening to see the initiatives underway".

Community Housing. Thank you to the residents at the Community Housing for your patience during the recent refurbishment activity. However, it is now good to see the new roofing and spouting and some interior refurbishment as well.

RFS (Request For Service). I would like to remind you of this service. If you have a personal or a public concern relating to infrastructure or general issues/faults please call the Southland District Council on 0800732732. The appropriate council staff member will address your concern and report back to you. An example of this is an issue identified on the Groveburn Road. A number of road signs were found snapped at the base and lying in the grass. Such obvious vandalism in our community is really disappointing. A RFS was submitted to the 0800 number.

Menzshed. As mentioned in the last Wanderer it has been suggested that a Menzshed Group may be

MILLARS

- PLUMBING
- GAS FITTING
- DRAINLAYING
- LICENSED BUILDER

Master Plumbers
f Ph 027 4340 705 or 03 225 8567



We specialise in:

Resource consents

Farm environmental plans

Policy advice

DOC concessions

Landscape plans & assessment

We take care of the paperwork,
so you can do what you do best!

Sonya: 027 5050 077

Rebecca: 027 4246 129

www.slwp.co.nz

Locally owned & operated

formed in Tuatapere, depending on the interest shown. Menzshed New Zealand is a registered charity that exists primarily for the mutual benefit, success and support of member sheds. The Riverton Menzshed group have been active since 2018 and are very busy with community projects. One of the founding members, Russell Bickley, will be present at the **Tui Base Café on Thursday 20th April at 10am** to chat with those in our community who may like to hear more about what being in a Menzshed group involves. All are very welcome!

Long Term Plan (LTP). Councils prepare a Long Term Plan every 3 years with a focus on how the rates will be spent and what Council will be doing over the next 10 years. As part of the process we, as a Community Board, have been involved in workshops where we identify priorities for projects to be included in the LTP. This list will then go out for engagement with you, our community, before final recommendations are made.

Autumn is fast approaching; a beautiful season of colour and long shadows. Enjoy!



Karen, and the team at Boundary Creek Gallery would like to advise that the Gallery is now closed for the winter season and will be reopening again with a brand new exhibition in October!

If you would like to be on our mailing list and be informed of upcoming events, exhibitions, updates and other information, please send us a message or follow us on Facebook!

The Gallery is available for group viewings by appointment by contacting us on:

0274 875 099 or boundarycreekgallery@gmail.com

For Landscaping, Land Maintenance, Gravel Supply & Cartage

**GRADES OF
CRUSHED & SCREENED GRAVELS,
ROOTRAKING, FARM TRACKS,
DAIRYLANES**



**ELEVATOR SCRAPER,
BOBCAT & ATTACHMENTS,
LANDSCAPING,
TRENCHING AUGERS**

Supplies of Gravel Ex Waiau River

River Run Screened Grades
Concrete Gravel Pea Gravel

Rejects for soak holes Crushed - AP30 & AP65
Pebbles for Sheep and Cattle yards & calf sheds
Fines suitable for cow lane capping

**K J SUTHERLAND
GRAVELLING &
AGRICULTURAL CONTRACTOR**

**2475 OHAI-CLIFDEN H/WAY
ORAWIA RD2 OTAUTAU 9682**

Ph 0274 367 934



WaterForce

Irrigation Systems
Pumping & Filtration
Effluent Dispersal
Water Management

20 Winton Hedgehope Highway, Winton
03 236 9805 www.waterforce.co.nz
0800 4 FORCE (4 36723)

CLIFDEN RURAL WOMENS UPDATE

Lynley Whyte, President

Clifden RW Branch is 93 years old, previously known as Womens Division of Federated Farmers. We have 23 members and always welcome new faces to our meetings. Southland Rural Woman owns their own forest and has been very fortunate to receive funding from the milling of our trees. This has enabled our Branch to give back to the community under their criteria. We have been able to make donations in the last year to the Life Education Bus, Borland Lodge, supporting St Johns' 1st Aid courses and towards lessons at our local swimming pools – Waiau, Blackmount and Takatimu. We have also made donations to the Hospice, Ronald MacDonald, Western Sld St John's Shuttle and Riverton Coast Guard to name a few. While the Life Education Bus was at Waiau Area school we enjoyed our visit meeting up with Harold and Teresa, hearing about the informative classes they have on offer.

Our highlight this year has been the Shepherd cooking classes our Branch held for the Blackmount Stations 'shepherds at Wairaki Station, fulfilling a need in the community. We held 4 sessions in the evenings which were hands-on getting them involved in cooking quick healthy meals. Some evenings we had 15 to cater for and it was wonderful evenings sitting around the large table enjoying the meal and catching up on each other. A recipe book was compiled from our sessions which we are selling and giving back funds to the community. Still some books for sale for \$10 each.

We held a successful practical cooking and nutrition workshop for Southland Growing Future Farmers – starting with the basics of porridge, scrambled egg to easy lunches and ways to use leftovers.

Our members have helped as Marshalls at Western Tui Triathlon, judging at pet shows, and the Tuatapere A&P Show. We were invited to Borland Lodge AGM 50th year Anniversary celebration. We had an interbranch get together with Thornbury, 10pin bowling and lunch at the Cheeky Llama and will be challenging them again next year.

With our year's theme being around food, we decided to change our gifts for Year 6 and Year 13 from dictionaries to Edmonds Beginners CookBook for juniors and Edmonds Food For Flatters for seniors. These were presented at the Waiau Area School and Hauroko Valley Primary School Prize Givings.

Recently we have helped cater at the Waiau Collie Dog Trials Centenary. We continue to support the newborn babies of our area with knitted clothing and baking. I have just collected and posted some beautiful Easter egg letters and artwork from the students at Hauroko Valley Primary School to cheer up those that have been affected by the flooding in the Hawkes Bay area. Along with Easter Eggs, these will be distributed by a RW Branch to children in the area that has been affected.

If you are interested in joining our Branch, we would love to hear from you!



Liquid Foliar Spray Contracting

- ✓ Fertiliser
- ✓ Fish Fertiliser
- ✓ Gibb & NBoost
- ✓ Herbicide
- ✓ Humates
- ✓ Soil & Herbage Testing

Jon – 021 575 071



C: 0274 247 102

T: 03 225 8652

E: admin@drakeplumbing.co.nz

KIERAN DRAKE
Certifying Plumber
& Drainlayer

Apply now for Meridian's Power Up Community Fund

At Meridian, we only generate from 100% renewable resources: wind, water, and sun. We're committed to doing good things with our energy. That means good for people, and good for the environment.

We're proud to back local projects in the communities around our wind farms and hydro stations with our Power Up fund.

With Power Up, your community has a say on what initiatives we support and fund. Managed by a panel of locals and Meridian staff, we're working together to build strong, sustainable communities.

Power Up Manapōuri provides grants for projects in Manapōuri, Te Anau, Tuatapere, and Clifden.

How to apply

Applications for the next funding round are open until midnight on 23 April 2023.

For more information and to apply:

- visit meridian.co.nz/powerup
- email community.fund@meridianenergy.co.nz
- call 03 357 9732

Do you know of a community project that's working to reduce carbon emissions? Visit meridian.co.nz and search "Decarb fund" for more information.



BAUHAUS



ARCHITECTURAL DESIGN SERVICES

- SITE FEASIBILITY STUDIES
- CONCEPT DESIGNS
- FULL WORKING DRAWINGS
- RENOVATIONS AND EXTENSIONS
- SUBDIVISIONS
- BUILDING CONSENTS
- RESOURCE CONSENTS



WAIAPU AREA SCHOOL

Year 1-13 Education

Live to LEARN, LEARN to Live

Kia ora Western Wanderer Readers!

Room 1

Room 1 have started 2023 with a hiss and a roar! We have already welcomed 6 new children to our classroom this year and they have settled in brilliantly. Term 1 has been a busy one with many things happening including a visit from the Life Education Bus, the school athletics day, movement for learning with REAP, NZ History with Lloyd Esler and Internet Safety with John Parsons!

In class we have been learning all about bees and wasps which we are finding very interesting and enjoying a lot. Art with our very own specialist art teacher Mrs Wilson continues and we have been creating pepetuna (moths) using a variety of media. We have loved our introduction into kapa haka lessons with Asha Carr this term and look forward to continuing them.

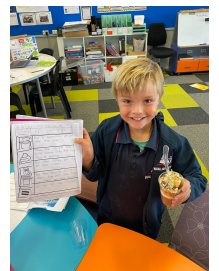


Room 2

Kia ora from room 2! We've had an awesome start to the year with so much still to look forward to. This term we've focused on shapes, measurement, descriptive and instructional writing as well as looking into our topic around Migration.

In maths we've been looking at shapes, building them with clay, popsicle sticks and really becoming able to describe their features. We're currently doing measurement, we've measured our bodies, and basically everything in our classroom.

In writing we had a blast learning how to follow instructional writing and then creating our own instructions to teach others how to do an activity.



Room 3

Room 3 are having an action packed term and have welcomed 5 new students.

The Life Education bus visited where we learned all about making healthy choices and we have had athletics day where we all contributed and cheered one another on. Our learning has been focused on biography and procedural writing and on measurement, and time.

With Kōkā Asha, we have been doing yoga, signing waiata and have been learning how to use te rākau.

The novel we have been reading is Spaceboy by David Walliams. This is a hilarious book about a boy pretending he is from outer space.



Room 4

Room 4 has been very busy this term. We have learnt about the first four ships that came to Dunedin with European settlers onboard. We have also read a wonderful book about a boy coming from England to NZ and describing what happened on his journey.

Mr Essler also visited the school to talk about early Southland. All classrooms took advantage of his time and knowledge. Mrs Wilson has helped us to create what went on the ship. We have been using air dry clay to make small kegs, animals and other cargo. The early settlers must have been tough and resilient to endure such terrible conditions.

Athletics had a wonderful turnout this year and it was great to see all the students giving 100%. I had the privilege of attending Western with all the successful athletes over at Nightcaps. Waiau Area School was fairly represented amongst the other competing schools and it was great to see how many got through to Southland.

Having history in the Social Sciences curriculum has allowed children to find out about the heroic settlers, possibly link their families to earlier stories about the first settlers. We live in an amazing country and the more we know the better about our origins.

Alex Reid CONTRACTING

**Paddock Cultivation from
Ploughing to Sowing
Dry Hire available
Aerating
Direct Drilling
Ridging
Mulching**



Dairy Lane Maintenance

Tip Trailers • Vibrating Roller • 2 Tip Trucks

Sheep Conveyor

Drenching, Vaccination etc • 3 way draft

Large Skid Steer for calf shed cleaning, loading Muck Spreaders etc

4 Muck Spreaders • 16,000 litre Slurry Tanker
Pond Stirrer • Umbilical Slurry System



Rural Contractors
NEW ZEALAND

**PHONE ALEX
0212775308 CELL
03 2255377 HOME**

Lynley McKerrow

Celebrant
Funeral and Marriage

P: 0272 974 767
E: nanamac60@xtra.co.nz

with care - with love - with dignity



TUATAPERE HANDYMAN SERVICES

Barry Bennett
(03) 226 6730

- **Painting - Interior/Exterior**
- **Waterblasting**
- **Spider & Fly Spraying**
- **General Repair Work**
- **Lawnmowing**
- **Weed Spraying**



TUATAPERE OUTDOORS & HARDWARE

For all your
Gardening tools, lawn care, garden
hoses, insect and disease sprays, potting
and compost.

We have those building requirements for
that weekend job with a good selection of
silicone, nails, screws and bolts.

New fishing rods and reels, fishing lures,
good selection of soft bait,
fishing nets, flounder and eel nets.



Good selection
of giftware.

Come in, check out
what we have.

Contact:

Judy **027 225 8192**

Paul **027 890 3602**

Shop **(03) 226 6363**

Ratty Says ...

In residence at the Waiau Memorial Library



I had an awesome time. I went to stay
with my friend Oakley. We had sooooo
much fun. He took very good care of me. He made sure I
had a nice, comfy place to sleep and that I was tucked in
every night. We went for bike rides, and he made sure I
was safe in the basket, so I couldn't fall out, and he
made his Mum buckle me in EVERY TIME we went for a
drive. We rode ALL the way to the Library to borrow
some books. It was a lot of peddling for small legs.

I offered to have a turn, but Oakley's Mum said 'No'. I
think it was because I said something about racing the
cars. After the library, we went
and got some ice cream. I really,
really wanted to have some
ice cream. I was very sad to leave
but we went somewhere even
more exciting. THE PARK!! I
LOVE the park, there is so much
to do. We played on the swing
and went for a drive in the 'Fire'



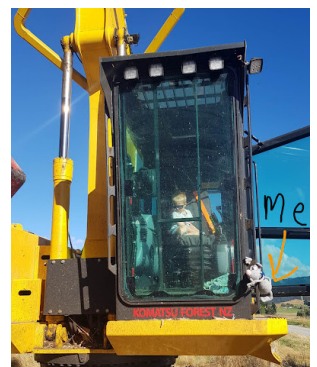
truck. The best part was that we could both drive at the
same time. No, we didn't crash into anything. Oakley
'helped' me down the slide.



Head first. So we did it again
and again. I got a bit dizzy. It's
a good thing I didn't have any
ice cream. We climbed over
everything. It was AWESOME!

Later we visited another library and I made a new
friend. His name is Pete the Cat and he's famous. He's
got books written about him. And he wears the coolest
shoes. I don't usually talk to cats because, well, you
know, cats eat rats and I didn't want to be dinner. We
had heaps of fun. We might have rearranged some
books. Don't tell the librarian, it's a secret.

Then I had the BESTEST fun. I got to ride on a BIG
YELLOW DIGGER. WOOHOO!! I was hanging on tight,
so I wouldn't fall off. That's when
they told me I was supposed to
sit inside the Digger, not swing
off the handle on the outside.
Ooops. It was just as much fun in
the cabin, but for some reason
they wouldn't let me drive. I don't
know why.



The Adventures of Charlton

Boy oh boy, at first, I was soooo glad to not have asked Ratty to come along on THIS trip! Because I know he likes a bit of an adventure himself and is always on the lookout for something exciting to explore. And you know why I did not ask him, well, in the end, just before we got on the plane in Invercargill on our way all the way to Germany, I remembered! I remembered what that was about Hamlin!!! It was there - as the story goes - that the Pied Piper of Hamlin whistled his pipe and all the rats that had taken up residence in the city of Hamlin ran after him. It is said that there were so many, that people could not move anywhere or have dinner or what, without having rats run all over the place. So, the people of Hamlin asked the Pied Piper to help out. The rats ran after him all the way out of town where they were no longer welcome as there were far too many of them. And I am sorry to say, they all came to grief...



It is this why I did not want Ratty to come along, I did not know that the Pied Piper had long gone and today, the rats are back! As you see in the photo that my owner took at breakfast, they are even allowed to help at mealtimes. They seem to make good egg-warmers. I made instant friends with them and nowadays, most of the rats that are in Hamlin are most welcome and guess what, they are a tourist attraction - haha - times have changed.

So, if I should ever go back to Hamlin, I will ask Ratty to come along and bring one of the books from the library that tells the story of the Pied Piper of Hamlin, and we can go together on the trail of the story. I would like that very much!



The actual history of the Pied Piper of Hamlin I am told is different to the way the Brothers Grimm told it. It seemed to be a collection of different stories about the time AD 1220, and one of them was that all the children of a whole generation disappeared and were never heard of again in their hometown. The historians think, that around that time there were new lands opened for settlement in the East and that "a recruiter" came and persuaded young people and couples to come and settle and become farmers and make a living for themselves far away from Hamlin. What we now know is that the Pied Piper was a man that seemed to have dressed differently from the people in Hamlin, to attract attention. The Young came and listened, and as there was not much work at the time nor a prosperous future in sight for them at home, they followed him to the new land in the East, never to return or be heard of again.



Ice cream & Milkshake Parlour

16 Orawia Road
8am - 4:30pm every day

2023 - a whole new year for us all.

Are you planning a small gathering, a birthday party, a celebration?

Do you need a nice space to meet in?

Give us a call at THE WELL - 027 247 2524

The setting is intimate, warm and welcoming, The food is excellent and to your specifications

A child's birthday party, a small musical evening, a meeting of minds and ideas,

A celebration or even a small wedding

We can cater, we have the facilities,

We have your interests at heart.

But we are still **THE WELL** in the daytime too
A Sunny, Open, and Happy Place.

Open **8am to 4.30pm - Seven days** a week

Delicious all day breakfasts, waffles, toasted or fresh sandwiches (your choice)

Really delicious food made in house.

Try a Pie or Sausage Roll - you won't get better

Our range of ICE CREAMS, and MILKSHAKES

will satisfy

Underground Coffee is the BEST of the BEST

THE WELL - TUATAPERE

Home of the Humpridge and where summer days are longer than anywhere else in the world!

For all your fencing requirements

WESTERN FENCING

SHEEP | DAIRY | DEER



Call BEVAN 0277 413 213

Tuatapere Freight

LOCALLY OWNED & OPERATED

RUNS MONDAY TO FRIDAY
WEEKENDS BY ARRANGEMENT

Phone Brandon

027 436 4360



Hens for Sale \$13 each
 18 month old Brown Shavers
 Ex-commercial layers from Te Waewae Eggs
 True Southland Free-range
 The next lot of chickens available will be available at
 the beginning of June, and every two months after that.
Ph Rob 03 226 6805 or 022 044 2086



Aaron Cranston Building Ltd

027 252 7933

- ✓ Renovations
- ✓ Extensions
- ✓ New Builds
- ✓ Sheds/Farm buildings
- ✓ Decks
- ✓ Pre-purchase house Inspections

Call us for any building requirements
Ph 027 252 7933 email: aaroncbltd@gmail.com

McMAHON design studio

Specialists in Graphic Design & Print

Our Services

- **GRAPHIC DESIGN SERVICES**
 INCLUDING: LOGO DESIGN & BRANDING PACKAGES, PHOTO EDITING
 ADVERTISING DESIGN FOR PRINT OR DIGITAL & EMAIL SIGNATURES
- **OFFICE & WORKSHOP STATIONERY**
 INCLUDING: CUSTOM PRESENTATION/DISPLAY ITEMS & BRANDED GIFTWARE
- **WEDDING & EVENT STATIONERY & SIGNAGE**
- **PERSONAL STATIONERY, GIFT ITEMS & PACKAGING**
- **CERTIFICATES - PADS - CALENDARS - BOOKLETS**
NEWSLETTERS - STICKERS - LABELS - VINYL DECALS

Contact us to book your design consult today.
We'd love to learn about your project & help your vision come to life.
We are conveniently located at
9 Cumnock Street, Wallacetown
P: 027 242 8109 E: mcmahondesign@outlook.com

WANTED TO BUY
 Possum Fur, Hard deer,
 Antler, Deer Velvet.
 Phone Leith 027 496 3721



Myles Greber

I thought it timely to remind folk of the onnaturesedge.co.nz website which provides, mostly visitor information, but considerable local content as well.

A recent discussion about availability of a map of our area on Facebook highlighted that what is available on the website perhaps is not known to newer members of our community, or perhaps gets forgotten over time.

History

The website development started in 2014 and has been ongoing ever since. Changes and additions only happen sporadically when something triggers the need for change or something new/worthy is identified.

Website

The website offers a brief overview for visitors to our area grouped under what's here, things to do, accommodation and places to eat. Items included are: *Beaches and Lakes, Walks and Tramps, Hump Ridge Track, Structures and Caves, Nature and Other.*

A list of local services is provided with contact details and links, perhaps more for locals, but some services are useful to visitors as well.

There is a What's on component to the website where anyone can add details of upcoming events. Sadly, this has had fairly poor usage, most favouring Facebook etc. to post details of events. Personally, I think an online, central place to put all upcoming events is a great resource, but it has never gained much traction but is still available for use. Major events are often put up to help advertise them. The

Western Wanderer's front page provides much of this detail, but this does not get picked up well by search engines like Google to spread the word that would help bring more visitors into the community.

Map

Around two years ago, an interactive map was added, covering Tuatapere and surrounding districts. This includes the *official* walks around the area, the various

businesses, churches and services, along with various tourist attractions for example: *Clifden Caves, Borland Lodge, Gemstone Beach, Monkey Island, Cosy Nook etc.* and various lakes in the area. The map should work on most mobile phones, allowing search and tracking of current location. Most locations include a photo and a link back to the website for further information.

Map

The Weather page has been added to over time and now features some very useful details, which include:

- Current local Temperature, Humidity, Barometric Pressure along with 24hr min/max values (measured hourly at Tuatapere).
- Weather Forecast for Tuatapere (YR Weather)
- Daily rainfall over the last week (updated hourly - measured at Clifden).
- Soil temperature and moisture (update hourly - measured at Clifden).
- River flow and temperature (updated hourly - measured at Tuatapere).
- UV Index for Tuatapere (updated daily from NIWA)
- Tide times graph (4 days), which includes high and low tides and height, sunrise/sunset times, twilight times, moon phase, moon rise/moon set times (tide data sourced from NIWA).

Note: The rainfall, soil details and moon phases may be particularly useful for keen gardeners.

Historic Links

Some key historic stories and details are provided, along with a link to the *Central and Western Southland Archive*.

Community

The Community section includes Classifieds where local ads can be placed for free. Sadly, this has not been used much, with most using Facebook etc. instead. This section also includes a full list of Clubs and Organisations, updated yearly in-line with the list provided in the Western Wanderer pull-out. Also included are details and links to other community organisations e.g. Medical Centre, Play Centre, Toy Library, Tuatapere Pool, Waiau Memorial Library.

Electronic versions of the Western Wanderer are made available for download in this section.

A news feed, on the front page, picks up any Internet news stories that mention Tuatapere.

Many of the sections allow for comments and discussion. Over the past several years there have been a number of conversations linking people together and to specific details of past residents and events.

Quick Stats

Once all the bots, search engines, hackers etc. are taken out, the website typically attracts between 500 and 1000 visits a month. The most popular search item is Gemstone Beach, so if there is anyone thinking of starting a tourist attraction/shop, that might be something to think about.

If you have any suggestions, corrections, ideas etc. for the website, please let me know via email at: info@onnaturesedge.co.nz (or a written message in my mailbox or have a chat).

MOUNTAINS EDGE CABINS MONOWAI


Mountains Edge Cabins
Hunting, Fishing, Mountain Biking,
Kayaking & Tramping
Cabin Accommodation
12 Cabins
Double and Single Available
\$35.00 per person per night
Eftpos available
Full Kitchen Facilities, Showers, Toilets, Playground
& the Tennis Courts right across the road!
We are 'pet friendly'
www.mountainsedgecabins.com
Email: mountainsedgecabins@gmail.com
75 Turbine Drive, Monowai. Ph. 03 225 8267



<https://ehive.com/collections/202139/central-western-murihiku-southland-archive>
Central & Western Archive
If you have photos or records of the district you can contribute for digitisation/sharing, please contact us on the following email:
CentralAndWesternArchive@gmail.com
or mobile phone: 027 211 4675



WAIIAU VALLEY SHEARING LTD



Simon de Vries
Julie Heaps
027 840 9867
03 226 6212

EGERTON CONTRACTING

for all your cartage needs!

Bulk Tip Unit

**Tractor available with soft hands for
loading of Baleage etc**

**ALSO Supply available of
Wood Chips / Sawdust**

Beach but-end firewood loads

PH: EAMON 027 371 8674

SOUTHLIFE Community CHURCH

Steve & Sharon
are Pastors
and we are an area church



We believe in
Community and
endeavour to
show this the
best we can by
the way we
care and serve!



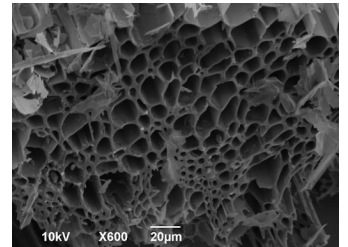
We warmly
invite you to
come along to
one of our
services.
It would be great
to see you

Sunday Service
10am Truro St, Orepuki

Steve & Sharon Calder
027 321-1108

BIOCHAR

Biochar Network of New Zealand



What is biochar?

Biochar is produced by heating biomass in an oxygen-free or air-limited environment. This is technically called pyrolysis. If used as a soil amendment it will have biology added to it before application. Yes, it is similar to charcoal, but not the same.

What are biochar's key attributes and benefits?

- Biochar is a stable form of carbon derived from biomass. Biological processes can not easily break the chemical carbon bonds.
- It's very long lived: Pyrogenic carbon in fertile grassland soils has been dated to over 7,000 years in the US Midwest, and 12-14,000 years in Russia.
- It has a microscopic pore structure which provides immense internal surface area and optimum habitat for soil microbiota. This porosity makes biochar an ideal amendment for increasing aeration and water retention of soils.
- Biochar has a high cation exchange capacity, which gives it superior adsorption qualities and provides the ability to bind and retain dissolved nutrients. The soil microbiota can use them and make them available to plant roots.



How is biochar produced?

- Small-scale technologies or methodologies are available for household or farm-scale biochar production: TLUD (top lit updraft) cookstoves; TLUD drums; 'flame-cap' vessels, pits or trenches; top-lit burn piles with artisan fire management; simple 'retort' containers. These are typically portable for transport to feedstock locations.

- Small to medium scale commercial technologies include gasifiers for the production of syngas, industrial heat/power and some biochar; pyrolysis systems for the production of biochar, industrial heat, and potentially a range of condensates (pyroligneous acids, oils, vinegars, and tars).
- Large industrial-scale gasification and pyrolysis technologies have historically been dedicated to waste management or metal reductant processes. These are located close to the feedstock source eg sawmill or papermill.



A Patriot pyrolysis reactor that turns woodchip into syngas and biochar.

How can NZ move forward?

Field trials and commercialisation of biochar in New Zealand are presently hampered by a chicken/egg problem: there is insufficient supply to serve potential trial applications at scale, and demand is low due to the novelty, which makes capital investment in higher volumes of production risky.

But the opportunities are too good to pass up. To this end, the Biochar Network of New Zealand (BNNZ) was constituted in 2019 with a mission to promote widespread acceptance of biochar application in a range of settings. BNNZ has members with a high degree of practical knowledge and will assist in facilitating projects as they are deployed, as well as publishing results as they become available. Join BNNZ at www.biochar.net.nz

Part 2 follows in the next edition of the WW ...

Tui Base Camp



Open from 8:00am every day!

Kitchen open until at least 7.30pm

**COME IN &
CHECK OUT OUR SPECIALS**

★ Oysters on menu ★

★ Super Rugby Screened ★

Ask for one of our Coffee Cards with your next Amore Coffee (Dine in or T/A)

Pre-order your morning tea and lunches by calling **(03) 226 6250** and we can have it ready for you to pick up when it suits you.

Don't forget we now have a mini-van!

Contact us to organise a night out at Tui Base Camp (pick-up and drop-off). Enquires to **James 027 837 3521**

For all of your dine in and takeaway requirements including:

In-house roasted Amore Coffee
In-house made pies, sausage rolls, cheese rolls
Range of breakfast options
Packed lunches
Catering

Phone: (03) 226 6250

www.tuibasecamp.co.nz



**Keep an eye on our
Facebook Page
for our latest updates!**



CELEBRATE A MONTH OF XTRA SAVINGS



\$22.99 EACH
ODD Company
10pk Can Range



\$24.99 EACH
Jim Beam & Cola; CC
(incl zero) CC Soda & Lime
10pk can ranges all 330ml cans



\$28.99 EACH
Smirnoff Ice Double Black
Guarana (incl zero) 7% 250ml cans
Smirnoff Red Ice 10pk bottles
Gordon's G&T 7%
Gordon's G&S 4% 12pk Can Range



\$34.99 EACH
Tul Bourbon
Barrel 51
7% 250ml 18pk Cans



\$52.00 2 FOR
Major Major
10pk Can Range

\$25.00 2 FOR
Hardy's VR
1L Range



\$38.99 EACH
Jameson, Jameson Orange, Cold Brew, Absolut & Beefeater flvrd
Ranges All 700ml; Malibu; Kahlua (incl Salted Caramel) 1Ltrs



\$39.99 EACH
Canadian Club (incl Spiced)
Larios Original; Teacher's 1Ltrs



\$45.99 EACH
Jim Beam 1.125L
Chatelle 1L



\$45.99 EACH
Gordon's; Smirnoff
Bell's 1Ltrs



\$57.99 EACH
Jack Daniel's 1L
Gentleman Jack; Woodford Reserve
700ml



\$69.99 EACH
Jim Beam 1.75Ltr



\$21.99 EACH
Export Gold
Extra Low Carb
15pk Bottles



\$25.99 EACH
Heineken;
Heineken 0 &
Light 12pk bottles



\$35.99 EACH
Corona
18pk Bottles



FIND YOUR NEAREST STORE
AT WWW.THIRSTYLIQUOR.CO.NZ

Promotion period between 1/4/2023 to 30/4/2023. While stocks last.
Promotion only available at participating stores. Please contact your local
store to confirm whether they are participating in the promotion and check
the pricing in-store prior to purchase. Online pricing will vary.



Untitled NCEA L1 Assessment by Melody Kendall-Roy - WAS Y10

I walked into the room and looked at her lifeless body. As my eyes start to fill like a pool of water. I drop to the ground and look around to see the curtain flowing in the wind. I walk cautiously over to her body and lift her body towards my shoulder and hug her. I scan the room one last time. I look at the wound across her stomach. I sigh in disbelief that this actually happened.

After a year and a half I finally found where she was. I took an unloaded gun, just to use as a threat. I left my apartment to walk to the building where she was working. I walked down the dark gloomy ally-way. I wonder how long I can get away with this, I thought. I turned the corner and walked towards the building door and I slowly knocked on the door no one answered, I walked in and there were people everywhere. I walked towards the reception and asked if Lilly Rayworth is working today.

My heart is racing faster than a horse running for first place. As I walk up the stairs I think to myself what Lilly had done to my daughter and I. Plus the pain she had caused me. I feel as though I have turned into a pile of nothing all of a sudden. But continue to walk up the stairs. I find room A16, the one room where my last thought of freedom could be. I look back at the stairs and shake my head. I knock on the door, no reply. I hear a slight movement. I knock the door down with the gun in my hand. I yell "WHERE ARE YOU?!" I see her head peeking from beneath the desk in the middle of the room. I walk over to the desk and cover her mouth and walk her out of the room.

I sit Lilly down on a chair and tie her hands behind her to the back of the chair and walk over to the mirror on the wall. I stood in front of the mirror, I stared into my reflection. My scruffy hair, the guilt on my face, my baggy eyes as low as the floor. The guilt on my face slowly fades away and it turns to a smirk. I looked over towards Lilly in the mirror and she looked anxious. I had this feeling that she was wondering what was going to happen next. I turned to her and started asking questions "Why would you do this to me? What have I ever done wrong for you to do this to me?" She answers me sweetly and simply "You had this coming for you and it's not what you did." That was all that was said to me, that's the only answer I got out of her. Her answer is the only thing that replays through my head like a C.D that had been hit on repeat.

I walked towards the door and put my hand on the door handle. But before I knew it, It was all over. The police were bowling through the door before I knew it, I was pinned against the wall and on my way to the police station. I have been sitting in this jail cell for two months now whilst Lilly is under investigation. But here I am writing a statement for the police.

Firewood for Sale

Waiau Area School Fundraiser
All funds go towards
WAS Students

\$70 per m2.

Info & orders directly with PB.
Ph. 022 475 9607



TODD & CO
REALTY

Melanie - your local salesperson

I am proud to be serving my local area, helping people from all walks of life meet their property goals.

After some great sales so far this year, I have a number of buyers still looking.

If you would consider selling, give me a call!

Mel Muldrew

021 068 5262

melanie.m@toddco.nz

TODDCO.NZ

William Todd & Co Ltd, Licensed (REAA 2008)



Choose Local. Choose Melanie.
Serving Southland since 1865.

WESTERN ELECTRICAL

2008 LTD

Electrical Solutions

Domestic | Industrial | Commercial

Quality Service at Competitive Prices

- New Builds, Rewiring & Alterations
- Dairy Shed, Farm & Industrial Maintenance
- Hotwater Element Replacement
- A/H Call Out Service Provided



Ph 03 225 8974 / 027 439 3787
Fax 03 225 8973

BARRETT *Ag* LTD

FULL SILAGE AND BALEAGE SERVICE



**ALL CULTIVATION
INCLUDING DIRECT DRILL
AND STRIP TILLING - PRECISION PLANTING**



**EXCAVATION
20 TONNE DIGGER/ GRADER
D85 BULLDOZER/ ROLLER
TIP TRUCKS AND TRAILERS**



**Barrett Ag Ltd
Ph: Kahu- 027 5183 448
E: barrettagltd@gmail.com
FB: Barrett Ag**



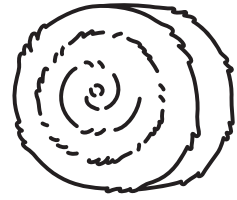


31st ANNUAL HAY DRIVE **TUATAPERE DISTRICT LIONS**

Hay and Baleage Competition

Friday 9th June 2023

Rabco Contracting at 134 Grove Burn Road



The Hay and Baleage will be auctioned at 3pm in the afternoon. The recipients of the day's profits are Hospice Southland, Tuatapere Free Ambulance Service, and the Education Fund within the Community.

Those entering the competition will have a chance of winning the very generous major prizes, AS WELL AS an almost guarantee of collecting a spot prize on the 9th of June as long as they are present on the day. FARMERS WHO DONATE 3 OR MORE ENTRIES WILL HAVE AN EARLY CHANCE AT THE PRIZE BOARD.

One entry comprises of:

- 8 small bales per entry or
- 1 large hay bale or
- 1 bale of baleage

Donations of straw will be gratefully received.

A Lions Member will contact farmers approximately 1 week prior to the competition.

The auction of entries will be at 3pm.

We hope to sell 200 bales baleage, 200 conventional bales and 50 large bales of hay.

This year we have several new sponsors as well as more demonstrations of ALL the new motorbikes and some new 4 x 4 utes. Farm machinery items will be on display.

Several competitions during the day include:

- The Best Swede)
- Best Fodder Beet) Generous prizes for each section
- The Best Turnip)
- The Best Chou)

3PM - Main Auction of Hay, Baleage, Straw and larger sundry items.

4PM - Prize presentation for competition entries and spot prizes

The judging will be done during the morning of the 9th of June.

The Lions Club will be providing food and refreshments at a very reasonable cost. You are all invited to turn up early and participate in the scrumptious light meal that will be available at lunch time.

We will acknowledge the generosity of our sponsors prior, during and after the competition.

With over 100 sponsors for our competition day, we have a fantastic prize list.

We remind people that they **MUST be present at prize giving** to participate in the "spot" prizes at the conclusion of the major presentations.

***Over the years the patronage from farmers has increased to almost 100% support,
so let's try to make our 31st competition the best ever!***

For any further information please contact:

Competition Chairman: **Sammy Sanford: 027 438 2248** or **Stephen Crack: 027 434 6871** or
Charlie Copeland: 027 669 1529 or **Quinton Donald: 027 438 8281**

The following piece is by George Charlton. It is a continuation of the last contribution in December's Western Wanderer featuring George's Working Years. It is part of a series of 'Movers and Shakers'; individuals who have contributed richly to the Tuatapere Community.

My Working Life - contin

On leaving school in October 1960, at the age of fifteen, I commenced my working life at the sawmilling company of John McIntyre's, who were cousins of my father. The company consisted of a saw mill at Bluecliffs Beach, a timber yard and a dressing factory at Tuatapere rail-head. My first job was tailing out the planing machine which dressed timber that had been air dried outside for twelve months or more. There were no drying kilns in those days. Most of the timber was sold to customers in Invercargill. A noted customer was Burgess Homes, who were building the first of what is called today 'KitSet Homes'. These homes were all timber which meant we sized all the 4x2 framing, which was green, to the one exact size. Then we dressed dry 4x1 to tongue and groove for flooring and dry 6x1 for weatherboards. Most of the timber that was used was Red Pine (or Rimu).

We would receive orders for so many houses a month we would run one size for up to a week and then set up for the other sizes for a week and so on. A smaller machine would run all the mouldings and architraves for the houses. Another big customer was Fraser and Sons-at that time one of only two Funeral Directors in Invercargill. They had their own tradesmen who used to build all their own coffins. We dressed sizes, which were 14x1, 12x1, 10x1, 8x1 which were all figured heart (Rimu). All the timber McIntyre's processed in those days was rimu, which came from the Rowallan Forest area. The staff, at that time, included Stewart McIntyre in the office, Gavin Amos who was factory foreman and also set up the machines, Jack Brown, Ted Knight, Russell Molloy, Merv Bennett and myself. Outside in the yard were Ted Alderson, Peter Verstappen and Bert Murdoch, who filleted the timber as it came from the mill by truck. Back then there were no such things as forklifts so all the timber was filleted in stacks down each side of a rail track and when it was dried we man handled it onto small rail trolleys and pushed them into the factory. The first of the forklifts arrived in about 1962. It was a brand new Fordson Major turned back to front. It was one of the first tractors I drove with power steering and, being top heavy, on the back was bloody dangerous at top speed. We had to drive along the Main Road with the packets of timber for the factory. You had to dodge traffic and, at the same time, watch out for cops, as it was highly illegal to drive on the road.

... continued in the next issue

The
WESTERN *Wanderer*

needs an

EDITOR

Could that be YOU?

Are you ...

- a writer or have a way with words;
- detail-oriented and organised;
- creative and/or an ideas person
- computer-literate (including familiarity with spreadsheets, online invoicing & online design tools);
- able to meet monthly deadlines; AND
- passionate about promoting your local community.

With well-established policies and procedures, and a supportive committee, the Western Wanderer is ready to be 'taken to the next level!'

A monthly remuneration is in place for this position.

Interested?
Want to know more?
Have any questions?

Email us

yourwesternwanderer@gmail.com



Tim and Superior go the extra mile

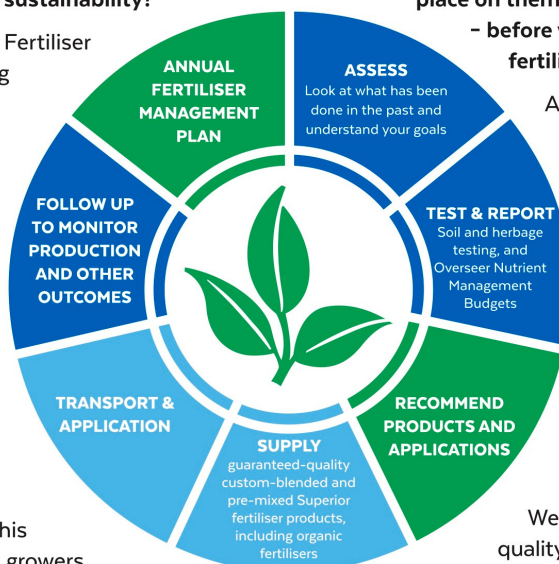
Are you frustrated with the lack of service from your local fertiliser consultant, peddling the same advice year after year regardless of your production outcomes, environment and sustainability?

Give **Tim Adcock** of Superior Fertiliser Specialists a call. He will bring a whole new meaning to service and client/advisor relationships.

Tim is a key member of the highly skilled Superior team totally committed to helping you develop healthier, more productive soils and plants.

We form a specialist fertiliser company that provides high quality advice and products at competitive prices. We have been doing this for South Island farmers and growers for just on 20 years.

Superior promotes a total soil care package. First, we get to understand the make-up, nutrient status and health of your soils, the demands you are going to place on them, and your production goals – before we apply one kilogram of fertiliser.



A comprehensive regime of vigorous soil tests will be undertaken and the results will provide the basis of a Superior Fertiliser Management Plan customised for your unique situation. This will complement your farm's Environmental Plan and provide the blueprint for an ongoing annual fertiliser programme.

We then supply guaranteed-quality solid fertiliser for your pasture and crops, monitor production and other outcomes, and update your Plans as required.

It's free to talk so don't hesitate to give Tim a call.
Phone 021 418 224



Tim Adcock
Fertiliser Advisor
Otago/Southland
021 418 224
tim@superior.net.nz

 FERTILISER SPECIALISTS
SUPERIOR
www.superior.net.nz

TUATAPERE SERVICE STATION

20 ORAWIA ROAD
PHONE: 03 2266475

HYDRAULIC FITTINGS & HOSES

We stock a good range of crimp on hydraulic fittings for agriculture hoses, we can also repair or make up new hoses.

FOR ALL YOUR MECHANICAL NEEDS

Car & 4WD WOF's
Trailer, Caravan & Motor bike WOF's
Servicing all vehicles
Light Engineering
New Tyres
Electrical Work
Scanning of most vehicles

HARDWARE IN STOCK

METRIC BOLTS & NUTS
IMPERIAL BOLTS & NUTS
GUTTER BOLTS
DYNA BOLT
COACH BOLTS
TEK SCREWS
WOOD SCREWS
SELF TAPPING SCREWS
HINGES, BRACKETS, CATCHES



NZ TRANSPORT AGENCY
WAKA KOTAHİ

WE CAN PROCESS ALL YOUR

CHANGE OF OWNERSHIPS
VEHICLE EXEMPTIONS
CANCELANON OF REGISTRATION
CHANGE OF HUBOMETER
REGISTRATIONS
ROAD USER CHAREAGES

EASTER HOURS

Friday 7th April to Tuesday 11th April closed

Wednesday 12th April to Friday 14th 9.00am to 3.00pm
(NOTE: WORKSHOP CLOSED THESE DAYS)