



WESTERN Wanderer

Tuatapere | Clifden | Orawia | Blackmount | Monowai | Colac Bay | Orepuki

Cover Photo: Te Waewae Bay on Horseback Used with Permission from: Orepuki Horse Treks

Issue 254

At a glance ... what events are on this month?

MARCH 2023

MONDAY	TUESDAY	WEDNESDAY	THURSDAY	FRIDAY	SATURDAY	SUNDAY
		1	2 Movement for Learning WAS Gym Tuatapere Free Preschoolers: 10:30am - 12pm	3	4 Tuatapere Community Market The Shed at the Well 10-1pm	5 Central & Western Murihiku Southland Archive Open Day WTCC 3pm - 7pm
6	7 Otautau Friendship League meeting The Well 7.30pm	8	9 Junior Waiau Valley Netball trials Year 3-8 (2pm-ish) WAS courts. Nominations close for Tuatapere Hump Track Charitable Trust	10	11 Blackmount Trail Ride (HVPS Fundraiser)	12
13	14	15	16	17 <i>Saint Patrick's Day</i>	18	19 Judging of Spud in the Bucket 2pm Waiau Town & Country Club
20	21	22	23 Tuatapere Hump Track Charitable Trust AGM 7:30pm WTCC	24	25	26 Central & Western Murihiku Southland Archive Open Day WTCC 3pm - 7pm
27 Liquid Nitrogen Clinic this week Please phone Medical Centre to make a booking!	28	29	30	31 Tuatapere RSA Bursary Trust Applications close	1	2 Takitimu Mine Open Day 10am - 5pm Ohai Rugby Club (with bus tours to the mine)
	Coming up ...	ECUMENICAL EASTER SERVICE Tuatapere Presbyterian Church 15 April 10am	Tuatapere Amenities Trust Funding Applications close 30 April	Movement for Learning WAS Gym Tuatapere Free - 9 May Preschoolers: 10:30am - 12pm		

Special thanks to

COMMUNITY NOTICES & EVENTS

HANDY PHONE NUMBERS

EMERGENCY

POLICE /FIRE/AMBULANCE: **111**



MEDICAL CENTRE: (03) 2266 123

TUATAPERE POLICE STATION:
(03) 2269 020

TUATAPERE COMMUNITY WORKER:
027 757 5983

HAUROKO VALLEY SCHOOL OFFICE:
(03) 2266 753

WAI AU AREA SCHOOL OFFICE:
(03) 2266 285

TUATAPERE CEMETERY TRUST:
(03) 2266 065

CHAMBERS SERVICE STATION:
(03) 2266 654

TUATAPERE SERVICE STATION:
(03) 2266 475

TUATAPERE FOUR SQUARE:
(03) 2266 898

TUATAPERE OUTDOORS & HARDWARE:
(03) 2266 363

DOCTOR ELDER BOOK PROJECT UPDATE

*Edwin Lewis, Chairman,
Doctor Elder Book Project Committee*

We're encouraging everyone to send in all of your Dr Elder Stories!

The Doctor Elder Book Project Committee is grateful to those people of Western Southland who have so far forwarded stories and old photos to assist with the research work that is currently well underway for the up coming book covering the Life and Times of Tuatapere's late Dr Eric Elder.

The stories are legendary and the book is going to make a great read. Author, Lloyd Esler, is doing a stirring job compiling information, some that many Western Southlanders may never have known about their local GP.

The book committee is extremely grateful to Jo Sandford at the Tuatapere Medical Centre for acting on our behalf as receiver of emailed contributions and hard copy material from contributors to be forwarded for the project.

There is still time for local people who have memories of Dr Elder to get their stories considered for the book and we encourage people to email jo@tuataperemedical.co.nz or drop off your story to Jo at the Tuatapere Medical Centre.

A HAUROKO VALLEY PRIMARY SCHOOL FUNDRAISER

BLACKMOUNT TRAIL RIDE

SATURDAY 11 MARCH

2 MAIN LOOPS WITH ENDURO DIVERSIONS

PEEWEE & YOUTH TRACKS

COUNTRY-STYLE HOT COOKED FREE LUNCH

1750 CLIFDEN BLACKMOUNT RD

4 WHEELERS AND SIDESIDES ALLOWED ON MAIN LOOPS

PAY ON THE DAY **CASH ONLY!**

REGISTRATION FROM 8AM TRAILS OPEN 9AM

FAMILY	ADULT	UNDER 15	MINI	PASSENGER
1 ADULT & 2 UNDER 15'S				SIDESIDE ONLY
\$100	\$60	\$40	\$15	\$30

SUPPORTED BY

SOUTHLAND HERITAGE

OWIE

DAVE WILSON CONTRACTING

Resolution

HM HARRY'S

IS CONTRACTORS

NZ

SPONSORS

CLABCO

AON

RD

DISPOSABLE

ALAN ROSE

STEEL CITY

TAKESIDE AG

Country Co

Your Community = Your Archive



Central & Western Murihiku Southland Archive

Open Days

We will have all our digitising equipment and a display at the WTCC on
Sunday 5th March & Sunday 26th March
for Heritage Month.

Bring historical photos or records to get preserved and shared. We are onsite **3pm to 7pm** both days.

Come along and see what we are doing to preserve our communities history, to keep it all safe from natural & human created disasters.

COMMUNITY NOTICEBOARD

TUATAPERE RSA BURSARY TRUST

Applications are now open.

Please email jwdmunro@gmail.com to get an application sent out to you.

Applications close March 31 2023.

The successful applicant will be informed shortly after, and will be presented with the Bursary at the 10am ANZAC Day service on April 25th.

All contact to **John Munro** at the above email address or **027 412 2925**

TUATAPERE AMENITIES TRUST 2023 FUNDING

Application forms are now available from Tuatapere Service Station, Chambers Garage and Tuatapere Outdoors & Hardware.

Completed application forms need to be **submitted by April 30, 2023.**

The Trust wish to remind applicants that funding for wages, administration and operational costs or retrospective funding will not be granted.

The funds must be utilised for the benefit or betterment of residents within the Tuatapere Urban Resource Area.

ORAWIA COMMUNITY FITNESS MORNING EXERCISE

Runs in 6 week blocks:

Monday, Wednesday and Fridays 6am - 7am held at the Orawia Community Hall.

All gear provided.

Starting next intake start of 1st March.

All ages welcome.

A disclaimer will need to be signed prior to attending the classes. Children under 16 must be accompanied by an adult.

TUATAPERE COMMUNITY MARKET

First Saturday of the month. **10am - 1pm**

In the Shed at The Well.

Please text **027 297 4767** to book a \$5 table

TUATAPERE AMBULANCE

Did YOU Know?

The Tuatapere Ambulance is a funded service by the Tuatapere Lions Club, for the residents of Tuatapere & Districts.

Should you receive an account for this service from St John, please forward it immediately to:

The Treasurer

Tuatapere Lions Club

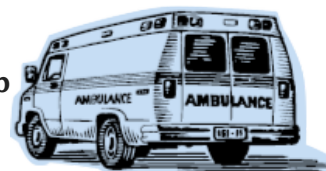
PO Box 47

Tuatapere

Sometimes we experience difficulty in receiving the invoices for YOUR trip - so PLEASE do forward them on to us.

Thank you!

**Tuatapere Lions Club Charitable Trust
Ambulance Committee**



WESTERN SOUTHLAND HEALTH SHUTTLE

The Western Southland Health Shuttle Service travels from Otautau, Ohai, Nightcaps, Tuatapere, Riverton - covering all of Western Southland. We also connect with the Invercargill-Dunedin shuttle.

The Western Southland Health Shuttle operates Monday - Friday (excluding Public Holidays).

Bookings are required by 3pm the day prior to transport.

Ph: 0800 103 046 to book.

Please book as soon as you receive your appointment.

TUATAPERE VOLUNTEER FIRE BRIGADE

We're on the lookout for members to join this rewarding organization. We are looking for persons who are, ideally, available throughout the day.

If you think that you would like to try this (sometimes lifelong) commitment, then please feel free to come and try it!

We train on Tuesday nights at 7:30pm during daylight saving and 7pm through the winter months.

We look forward to meeting with you.



COMMUNITY NOTICES & EVENTS

Tuatapere Presbyterian Church

2023 – how time slips by
Begin your year on a positive note
How about coming to church
on a Sunday?
A great fellowship and a
friendly welcome!
Are you searching for?
Is life a bit of a struggle?
Have things not quite gone your way?
Need somewhere to reflect and
rest your mind?
Need to ‘take a breath’?
How about joining with us
For a time of quiet fellowship
Waiau Valley Presbyterian Church
Main Road, Tuatapere
On **Sunday** at **10.30 am**
A time to be, to reflect and refresh
All are welcome to join us
Make new friendships, create
new moments
Need to know more?
Phone or message
Lynley on 027 297 4767

The Small Job Man

Tuatapere Area

- Butcher-Boner
- Lawn Mowing
- Weeding
- Trimming
- Water Blasting
- Chainsaw work
- Wood splitting
- Small Building work
- Fence Painting

Senior Rates
Phone **John 022 164 8061**

WAIAU MEMORIAL LIBRARY

Library Hours: Fridays

10:00am - 11:30am

2:30pm - 4:00pm

7:00pm - 8:00pm



Tuatapere Community Pool

Access Keys:

Ian Laurenson 022 608 4764

Suzanne Norman 027 422 1521

Water Quality or Maintenance Concerns:

Trevor 027 203 7854

All other queries:

President: Minessa 027 311 2112

Prices for Season Pass:

Family (immediate family in one house) \$180

Buddy key (2 x unrelated individuals) \$180

Senior Citizens Buddy Ticket \$150

Access Tag \$15

Or

One week family key hire \$30 **plus**
\$15 access tag (refundable on return)

2 hour hire \$5/adult + \$3/child **plus**
\$15 access tag (refundable on return)

LADIES OUTDOOR BOWLS TUATAPERE

We need more players!



Mondays - Practise Day - 1pm

Wednesdays - Game Day
(Times confirmed each week)

Contact Pam Cooper 027 249 0777 or
Olive Bennett 03) 2266 477

PLEASE HAVE YOUR ARTICLES, NOTICES, OR UPDATED ADVERTS FOR THE
WESTERN WANDERER SENT IN BY

20th of MARCH (for the April Issue)

POP UP SHOP

**Quality second hand goods
Affordable prices**

**OPEN FRIDAYS AND SATURDAYS
10am to 4pm**

Tuatapere Presbyterian Church Hall, Main Road,
Tuatapere. Enjoy a cuppa and a chat while there.

HOUSEHOLD ITEMS, CLOTHING, SHOES, BOOKS,
LINEN, TOYS, AND MORE.

*CHECK OUT MY WEEKLY FACEBOOK POST FOR A
SELECTION OF THE ITEMS AVAILABLE.*

**Donations of items always gratefully received.
Thank you for helping us help the community.
Drop off at the church or for other options
contact me. Carol Diack 021 110 1835**

WANTED BY THE POP UP SHOP

**Linen - Children's Toys - Household Items
- Jigsaws - Children's Shoes -**

Can you help with any of the above for our customers?
Many, many thanks for your support of the shop.
Contact Carol Diack 021 110 1835

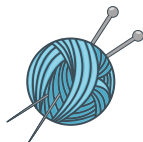
KEEN FOR A GAME OR WANT TO LEARN CHESS?

Sundays 3-5pm at Last Light Lodge
Gold coin donation appreciated!
See you Sundays - just turn up!



WESTERN SOUTHLAND WOOLCRAFT GROUP

Spinning, Felt, Weaving, Knitting, Crochet.
Other crafts welcome!
1st & 3rd Wednesday of the month.
10am - 3pm. \$3. BYO Lunch.
Scout Den, Erskine Street.
For details please contact:
Helen Todd 022 103 9327



NEED A JP?

**The following Justices are available
by appointment:**

Tuatapere - Keri Potter - 027 526 3137

Te Waewae Bay - Shirley Whyte - 027 504 5220

Blackmount - Nicky Baker - 027 643 5880



COMMUNITY NOTICEBOARD

COLOUR RUN



**Sunday 2nd April 2023
11am
Tuatapere Domain**

**JOIN US FOR SOME GREAT
FAMILY FUN.**

**SAUSAGE SIZZLE LUNCH
PROVIDED**

**\$20
PER
FAMILY**

WEAR WHITE

TUATAPERE & DISTRICTS LIONS CLUB PROJECT



SUPER DIRT

Bags @ \$8.00 ready for your garden

**Pea Straw
Conventional
Bales
\$10 per bale**



Super Dirt can be collected from
Rabco's Yard, Groveburn Road

Pea Straw by arrangement

Phone Shirley or Stephen
(03) 226 6817



TUATAPERE COMMUNITY WORKER

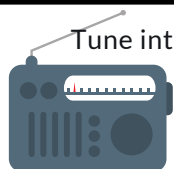
Room 5 Medical Centre
69A Orawia Road

Monday - Thursday 10am to 3pm

Keri Potter **027 757 5983**

Email: tcworker@xtra.co.nz





Tune into Tuatapere's very own Radio Station

88.2 FM - Tui FM!

Hits of the 80's & 90's and
today's current music!

COMMUNITY NOTICEBOARD

KEEN TO GIVE SQUASH A GO?

Great exercise & social time!

We are practicing on Mondays.

Everyone more than welcome!

If you need more information, please contact:

Men - **Sam Egerton 027 250 5477** or

Women - **Rebecca Robertson 027 424 6129**



INDOOR BOWLS

We have practice nights on Mondays 7.30pm with
competition games Thursdays 7.30pm at the
Waiau Town & Country Club.

Young players are welcome to join with training/
coaching provided.

If you'd like to join or know any who is keen ...
please email jessejculbertson@icloud.com

A TIME TO CELEBRATE HOPE

We live in uncertain times

We have lived through uncertain times

Now is the time for thankfulness

ECUMENICAL EASTER SERVICE

At - Presbyterian Church Tuatapere

When - Friday 15th April - Good Friday

Time - 10 am

All Welcome on that special day

Questions - contact **Lynley** on **027 297 4767**

WESTERN SOUTHLAND CATHOLIC MASS

Held **Fridays** at **4.30pm** in the Anglican Church
corner of Orawia Rd and Birch St Tuatapere.

We are a friendly, lively group of people and
everyone is very welcome to join us especially
those who are visiting the area.

Grateful thanks also to the Tuatapere Anglican
Community for sharing their church facilities
with us.

Fr Brendan Ward (Parish Priest) Ph: **03 218 4123**

Email: basilica.invercargill@gmail.com

Fr Jaewoo Lee (Asst. Priest)

027 309 422 (Text preferred)

SALVATION ARMY FAMILY STORE TRUCK

The Salvation Army Family Store Truck
will come out and collect large amounts
of your pre-loved furniture & other
household items. This service is free.
Please call the store to organise your visit
on **03 214 5380**



**Family
Store**

Donate. Buy. Help.

familystore.org.nz



COUNTRY CORNER CRAFTS

Come in and browse and see what we have
to offer. Hats, scarves, children's knitwear,
cards, jewellery, woodware, sewing, jams,
pickles, sauces, etc.

Tuatapere souvenirs "On Natures Edge"
logo are always available.

Is anyone interested in joining to sell their
crafts? You are more than welcome to
contact us.

Want to volunteer your time & work in the
Craft Centre - let us know! It's a great way
to meet people! If you wish to view the
shop and it is closed, please ring the ladies
below to open it for you.

Louise Greber (03) 668 6001 or

Lyla Sherriff (03) 226 6187

TUATAPERE ENVELOPES

Envelopes printed with the
"Tuatapere on Natures Edge" Logo
can be purchased at Country Corner Craft
Shop 1A Orawia Road. **Cost \$4.00 per 10**



SOUTHLAND COMMUNITY LAW CENTRE

Free legal information and advice for the community
of Southland. 2nd Floor, Cue Building, 33 Don Street,
Invercargill. Phone **(03) 214 3180**

Freephone: 0800 550 800
(outside Invercargill city only)



COMMUNITY NOTICEBOARD

TUATAPERE PLAYGROUP

Tuatapere Playgroup welcomes all 0-5 year olds & their parents/caregivers to come join the fun!

You'll find us at 23B Orawia Road, Tuatapere



TUATAPERE PLAYGROUP

TERM 1, 2023 LEARNING PLAN

THEME: MESS IS THE BEST — LEARNING THROUGH MESSY PLAY

TE WHARIKI PRINCIPLE FOCUS: EMPOWERMENT

TE WHARIKI STRANDS FOCUS: COMMUNICATION & EXPLORATION

Date	Theme	Activities
10 th February	Be My Valentine	Create a valentines day themed craft for someone special.
17 th February	Foot Loose	Create a mural by painting with our hands and feet ... and any other body part we dare to get mucky!
24 th February	Icy-cool	Explore frozen slabs of ice and discover what may be hiding inside! How will you get it out?
3 rd March	NZ Sea Week	A trip to Colac Bay to explore the rock pools. What will we find? Followed by a sausage sizzle for lunch.
10 th March	Mud Glorious Mud	Create 'mud' using cornstarch and cocoa and then hold a muddy car race! Whose car will be the winner?
17 th March	Rainbow Spaghetti	Cook and then dye some pasta spaghetti then use it for sensory play.
24 th March	Anzac Day Art	Create some ANZAC Day themed art work (to display at the RSA Hall on ANZAC Day) and a wreath to present on behalf of Playgroup.
31 st March	Easter Egg-tastic	Make Easter themed crafts and have an Easter egg hunt. Followed by a shared morning tea to finish off the term.

We provide a warm, friendly atmosphere for children to form bonds and learn alongside each other and a place for parents to connect.

For more info message our

Facebook page or contact Gemma on 022 040 3368



CLIFDEN PLAYGROUP

45 Otahu Eastern Bush Road. Join our FB Group to check if it's on: Wednesday (during School Term) 9:30am - 12:30pm. All mothers and children welcome.

Bring packed lunchbox for your child's morning tea.

Contact: Sarah 027 699 5234

TUATAPERE TOY LIBRARY

Tuatapere Toy Library has been a toy swap/hire service provided to the young families of Tuatapere and surrounding districts since 1989.

The purpose is to create opportunities for the little people of our community to have accessibility to toys. A small contribution of an annual membership allows families to join the group and have access to the toys. For more information or questions please text or ring Nathalie Pahl on 027 4759 075



TAKITIMU MINE OPEN DAY

Sunday 2 April
10am - 5pm

Ohai Nightcaps Rugby Club,
with bus tours to the mine

See a 200-tonne excavator operating during the mine tour



Join us for a fun-filled day out with the family with:

- Free entry and activities for the kids including mini Jeeps, sumo suits and bouncy castles
- Learn more about our rehabilitation programme on a mine tour (Bookings required on the day)
- Fundraising BBQ for Ohai Nightcaps Rugby Club
- Live music from 12pm
- Woodchopping demonstration by The Southland Otago Axe Men sponsored by Nightcaps contracting
- Giveaways and prizes including free native plants and fuel vouchers
- Free Mr Whippy and face painting for the kids
- Have a go on a mini digger
- Lolly scrambles and much more



For more information contact the
Takitimu Mine Site takitimu@bathurst.co.nz
Company Road, Nightcaps.



TUATAPERE HEALTH & GIFT SHOP

(part of Riverton Pharmacy)

69a Orawia Road

(beside the Medical Centre)

Ph: (03) 226 6999

12:00pm - 5:30pm Mon-Fri

Good selection of Vitamins, Giftware & Over-the-counter healthcare

First prescription drop-off from 1:30pm

Second prescription drop-off 4:30pm

Max's Lawn Mowing Services

Available: Weekdays 3pm til dark
Weekends 9am til dark

Prices depend on size/time spent doing the lawn

Contact Loretta (my mum)
027 462 9527

For the Tuatapere area



Looking for a babysitter or someone to mow your lawns?

Well, you're in luck!

I'M A RELIABLE TEENAGER
LOOKING FOR SOME WORK

Contact Jay on 027 242 2890

COMMUNITY NOTICEBOARD

TUATAPERE RSA ANNUAL SUBS 2023

To all members of the Tuatapere RSA we would like to remind you that this years membership fees of \$25.00 are now due.

Payment method is easy now. You can pay via internet banking:

Account Name: Tuatapere RSA

Bank Account Number: 06 0958 0007999 00

Please put your name and the word SUBS into the reference and code column.

Treasurer

Margaret Thomas 3 McVicar St, Tuatapere. 9620

Email: arpad@xtra.co.nz



TUATAPERE RSA POPPY APPEAL 2023

So many of us no longer have cash these days, we are trying to make it easier for all concerned that want to keep supporting the poppy day appeal.



You can donate via internet banking to:

Account Name: Tuatapere RSA Inc.

Account Number: 06 0958 0007999 00

Please put the word POPPY into the reference column so we know it is for the ANZAC poppy day appeal.

We thank you for your kindness. These funds go towards supporting our local community.

LADIES OF TUATAPERE - YOU'RE INVITED!

The Otautau Friendship League will be meeting at "The Well" on Tuesday, March 7th at 7.30pm

Lynley McKerrow will be the guest speaker followed by a supper.

We invite ladies of the Tuatapere area to join us on this night. (Supper at your expense).

Please RSVP to Lynley at the Well or text her on 027 297 4767

Phone: Anita Green 027 506 2418
Tuesday 9-5pm, Thursday 10-8pm, Friday 10-5pm - Appointments are encouraged.

CHAMBERS REPAIR SERVICE

45 Half Mile Road, Tuatapere

Ph: (03) 226 6654

- 24 hour Self Service Fuel
- Full Mechanical Workshop
- NZ Post Centre
- Agents for Wide Span Garage



Bring your lawnmower in for a service now & beat the rush

**MTA Gift Vouchers
Available**

PLATE PASTURE METER READING THAT'S QUICKER AND EASIER, WITH AT THE GATE REPORTS
METER SERVICES
TROUGH CLEANING SERVICES

- Specialist in quality pasture meter reading with advanced sensor technology
- Provide 200 measurements per second or 18,500 readings over a single 500m pass
- Provides a fully integrated electronic support system
- Provides a secure web-based storage of information with easy access
- Prompt generated feed wedges for rapid decision making and seasonal comparisons
- Generate reports at the gate, supplying valuable pasture cover data and comparable results every time
- Improve heath & increase animal hydration
- Enhance production & improve water quality
- Reduce bacterial/algae contamination of trough water

CLEAN TROUGH WATER MEANS IMPROVED LIVESTOCK HEALTH

Now 2 bikes available for pasture metering

Brett George • P 027 351 3408
E platemeterservices@gmail.com

IN & AROUND THE COMMUNITY

2023 TUATAPERE RSA CHRISTMAS PARADE

John Munro, Parade Organiser

Wow everyone - what a fantastic night out we had down at the new venue for the Christmas Parade.

The weather was kind, and the crowd was great!

We had plenty of room for the children to play safely and also for the first time, a place for the cars and floats to park so people could come and enjoy them with out having to hurry them away so the road could re open.

I have to admit, I was a little skeptical about moving it down to the Domain but after our first time there, I am thrilled with how much nicer and relaxed it was.

There was food there on offer, the Chocolate wheel (Thanks Glenys And Debbie - AWESOME Job Ladies) Bouncy Castle (Thank you Waiau T&C Club) Tui Base was there with their famous sausages, and of course Santa!!! There was tons of room inside for folk to sit and look out through the windows and also along the front of the Pavilion. A big thanks to the Waiau Rugby club for letting us use their facilities, and to Gary Templeton and Dave Fletcher for the great state of the Domain. It truly was a team effort.

This year I want to make it even bigger and better - a real family night for everyone. There will be Christmas music, food, coffee and hopefully games to play for the children. Please put your heads together and if you have any ideas on how to make this an even better night please let me know and help out by making it a real fun night out for families and the like. Now that we are allowed to have gatherings again this will only get bigger and better each year. So

think **FUN** - think **FAMILY** - think **PARADE ENTRIES!**
Nothing is too big or too small and of course **SANTA!!**

You can get in touch with me (John) on
027 412 2925 or **locatorbeacons@gmail.com**

ESSENTIAL OILS 100% PURE GIFTS OF NATURE
Florals Trees Plants Herbs Spices Citrus

To learn more, phone or text your local
Wellness Advocate
Carol Erskine Papatotara 027 4599 654





**SOUTHERN
SPARX**
ELECTRICAL

CLAYTON PRIME
Registered Electrician

📞 021 951 365

✉️ southernsparx@gmail.com

For bookings contact
Rochelle 📞 021 588 257

DOMESTIC | COMMERCIAL | INDUSTRIAL



MR STEEL
TUATAPERE
PH: 027 276 6816
MALCOLM

**For all your engineering,
steel fabrication and repair needs!**

FORDE WINDERS SHEARING LTD

Available for all new and existing clients

For all your shearing and
crutching requirements

Please phone
Darin Forde 027 229 7760
Jeremy Winders 027 231 4299



**BEN MCMASTER
BUILDING**

Ph: 027 202 7955
benmcmaster@live.com

- Licensed Building Practitioner
- Sheds, renovations & new homes
- Based in Western Southland

You dream it, we'll build it



* 13 Tonne Digger * 5.5 Tonne Digger * 2.7 Tonne Digger- dry hire or operated
 * Tip Truck * Bob Cat * Augers * Post Driver * Tree Saw & Hedge Trimmer
 * Tree Trimming * Post Driving * Fencing * Cleaning of Wintering Sheds * Site Clearance * Cartage * Graveling * Lane Maintenance * General Earthworks

For all enquiries and bookings please contact Lance or Alice Harris
 Lance: 027 304 3714
 Alice: 027 270 0363
 Email: lanceharris533@gmail.com
 Check us out on facebook- Harry's Machines

Shearing magazine

Des Williams (editor)

Tel 07 839 2891 : Mob 0274 833 465

Email : shearingmag@xtra.co.nz

Member NZ Guild of Agricultural Journalists and Communicators (Inc)

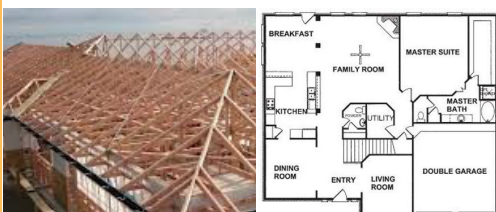
LAST SIDE PUBLISHING LTD

PO Box 102, Hamilton 3240, New Zealand

PAUL ANDERSON BUILDER

AVAILABLE FOR ALL YOUR
BUILDING REQUIREMENTS.

NO JOB TOO SMALL.
COMPETITIVE RATES.
REFERENCES AVAILABLE!



Mobile: 027 890 3602

thetakis@outlook.com

IN & AROUND THE COMMUNITY

TRUST VACANCIES - EXPRESSIONS OF INTEREST

The Tuatapere Hump Track Charitable Trust AGM will be held at the Waiau Town and Country Club, March 23rd, 7pm. Nominations close on **9th March**.

As two trustees are retiring this year, we are seeking expressions of interest to fill these vacancies. Nominations close on **9th March**.

The Tuatapere Hump Track Charitable Trust is the sole shareholder of The Tuatapere Hump Track Limited, the business that operates the Hump Track. The trust has 13 trustees all of whom are volunteers. The trust's role is one of governance and support to the management and operations of the Hump Track.

This is an exciting time as the Hump Track will open as New Zealand's next Great Walk at the beginning of 2023-24 season in October this year.

Are you someone who is passionate about Western Southland and your community? If you have a few spare hours to volunteer your time and energy AND you enjoy working with a really neat team, then **we need you!**

Nomination forms can be obtained from the Returning Officer, at info@wjjet.co.nz or by phoning: **027 437 6174**

SENIOR CITIZENS

Senior Citizens is a group of over 50s that meet every **Friday afternoon at 1pm** at the rooms behind the RSA Hall. We are always looking for new members so if you would like a fun afternoon playing bowls, cards or just catching up with friends, come and join the group.

If you need a ride - we can pick you up!

Contact: Olive Bennett Ph (03) 2266 477 or
 Alison Bennett Ph 027 224 2724

**Get your car washed, dried and windows cleaned
 Price arranged on request!**

Contact: Rex Hibbs Flat 1/26 Orawia Rd, Tuatapere

Waiau Town & Country Club

<https://www.waiautownandcountryclub.co.nz>

Phone: **03 2266 489** | Address: 41 King St Tuatapere



waiautcc@gmail.com |



facebook.com/waiautcc



Courtesy Van Available

Keep an eye on
our Facebook Page
for more details
on upcoming
events ...

Club Opening Hours

Mon - Thurs 4pm till close.

Fri 3pm - close.

Sat Noon - close.

Sun 3pm - close.

We can cater!
Call us to discuss
options!
03 22 66 489

New Members Always Welcome!

Just pop in or call the club for a nomination membership form.
Annual membership 2022/23 is \$50 p/p or \$30 p/p for pensioners.

**Bistro
Hours**



Thurs: 4 - 9pm*

Fri: 3 - 9pm*

Sat: 1 - 9pm*

Sun: 3 - 9pm*

(*Bistro may close from 7:30pm onwards if not required)

We are the perfect place for your functions/birthdays!



Melanie - your local salesperson

I am proud to be serving my local area, helping people from all walks of life meet their property goals.

After some great sales so far this year, I have a number of buyers still looking.

If you would consider selling, give me a call!

Mel Muldrew

021 068 5262

melanie.m@toddco.nz

TODDCO.NZ

William Todd & Co Ltd, Licensed (REAA 2008)



Choose Local. Choose Melanie.
Serving Southland since **1865.**

Sewing and Mending Services Available

Experienced machinist offering fast, reliable service with very reasonable rates.

I will mend/make anything from zip replacements to curtain making - just ask!

Free quotes and pick-up delivery service within Tuatapere.



Contact **Deborah**

(03) 226 6783 or 021 0305 667



INDEPENDENT MIDWIFE

ISOBEL DEVERY

*Caring for women throughout
Pregnancy, Birth till six weeks
Post Natal.*

*Choices for place of birth,
Home or Winton Birthing Units
or Kew Hospital.*

*Free pregnancy tests
available on request.*

**Phone: (03) 22668822
027 2267020**

©Peccaro, EthicGraphics®

MOUNTAINS EDGE CABINS MONOWAI



Hunting, Fishing, Mountain Biking,
Kayaking & Tramping
Cabin Accommodation

12 Cabins
Double and Single Available
\$35.00 per person per night

Eftpos available

Full Kitchen Facilities, Showers, Toilets, Playground
& the Tennis Courts right across the road!

We are 'pet friendly'

www.mountainedgecabins.com

Email: mountainedgecabins@gmail.com

75 Turbine Drive, Monowai. Ph. 03 225 8267

WESTERN ELECTRICAL

2008 LTD

Electrical Solutions

Domestic | Industrial | Commercial

Quality Service at Competitive Prices

- New Builds, Rewiring & Alterations
- Dairy Shed, Farm & Industrial Maintenance
- Hotwater Element Replacement
- A/H Call Out Service Provided



Ph 03 225 8974 / 027 439 3787

Fax 03 225 8973



DAGWOOD DAGGING

Available now to all new and existing customers for all your crutching requirements.

3 Stand or Single trailer available
7 days a week, wet or dry.



No job too big or too small.

Competitive rates

Jeff Chambers

027 3042 241

WAI AU HEALTH TRUST – March 2023

Medical Centre:

Our team at Tuatapere Medical Centre strongly believe that everyone in our community should receive the best possible healthcare we can provide, our ultimate goal is to make this happen for all. If enrolling as a patient or seeking care is a barrier to you for any reason (including financial hardship) please contact me confidentially on Jo 027 2356190.

During the month of April, we will be offering free Health checks to our Māori and Pacifica community. Appointments will be for 30 minutes with one of nurses, should you require a follow up visit with one of our practitioners we can look at options for this at your appointment. Please contact our reception to arrange your visit - 032266123.

AFTER HOURS ON CALL:

Tuatapere Medical are now covering all after hours On-Call. We are offering this service to both Tuatapere Medical and Otautau Medical Centres patients. In doing this our Practitioners are committing a great deal of time and dedication to our communities. As Manager I am extremely grateful to our clinical team for taking this challenge on. Rural Communities nationwide are struggling to retain any level of afterhours care and we are doing our utmost to retain this service in our area. I am sure you appreciate this as much as I do! We have a fantastic team who always strive to deliver the best possible healthcare outcomes to you all, our valued patients. Our community is extremely fortunate to have Nurse Practitioners and the required qualified level of Registered Nurses to make this happen. Whilst some of our community may feel a GP is required to be part of this service this is not an option we are currently requiring or a direction we are following. Should you have questions regarding this please contact me direct Jo 027 2356190.

Liquid Nitrogen Clinic – During the week of 27th March, please phone and make a booking.

Homebased Maternity Care:

If you are pregnant or a new mum these services would be of great benefit. This care is available for you, we assist with anything for yourself or your new baby. Please contact me to discuss and ask any questions regarding the assistance we can give you as a mum of a newborn baby. Should you have any questions or concerns I look forward to hearing from you.

Day Activities Programme:

We currently have available space for new clients to attend our day activities programme for the elderly. This is a very social, friendly outing with likeminded people who enjoy catching up and interacting with others. If you would like to discuss further, please contact me.

Jo Sanford (Manager)

Cell: 0272356190



Waiau Health Trust
69a Orawia Road, Tuatapere
Approved Registered ACC Provider
Monday to Friday
9:00am – 4:30pm
Ph.: 2266123

Practitioner Hours
Amanda McCracken (NP) – every
weekday

Sheryl Eden (NP) –every Monday &
Tuesday

Murray Allen (GP) -On Occasions

Physiotherapist
Tuesdays & Thursdays
Phone for an appointment

Podiatrist
Visits regularly –
Phone for an appointment

Warts/Minor Skin Lesions
Liquid Nitrogen treatment available
Phone for an appointment

Homebased Maternity Care
We are offering this service
in the patient's home.
Please contact Jo Sanford
on 2266123 for enquiries.

Day Activities Programme for
the Elderly
Every Tuesday & Wednesday
Please phone for further information.

District Nursing
Available as required by referral

McMAHON design studio

We are your local
Full Service Design & Print Shop

Follow us on:



@McMahon
Design Studio

Specialising in

Logo Design & Branding, Wedding & Event Stationery & Signage
Packaging & Personalised Stationery & Gifts

No need to travel far for your
graphic design & printing
requirements.

We are conveniently located
in the Wallacetown Township.
(just off Highway 99)



50 mins drive from
Tuatapere or Ohai
25 mins from Otautau
20 mins from Riverton
or Winton.

Our Services

LOGO/EMBLEM DESIGN
including full branding packages

**ADVERTISING
& SIGNAGE DESIGN**

**SOCIAL MEDIA GRAPHICS
& EMAIL SIGNATURES**

**PHOTO EDITING & CUSTOM ART,
PHOTO BOOKS, & CANVASES**

WEDDING & EVENT PACKAGES

Including: INVITATIONS, STATIONERY, SIGNS, DECOR & FAVOURS,
PHOTO BOOTH ACCESSORIES, THANK-YOU CARDS & GIFTS, ETC...

**ALL OFFICE STATIONERY
& CUSTOMISED PRESENTATION & PROMOTIONAL GIFTS**

**CERTIFICATES - PADS - CALENDARS - BOOKLETS & NEWSLETTERS
STICKERS - LABELS - VINYL DECALS**

PERSONALISED STATIONERY & CARDS

CUSTOM SIGNAGE, MUGS, GLASSWARE, KEY RINGS, CLOTHING etc..

WE HAVE A GREAT RANGE OF FINISHING SERVICES INCLUDING:

DIE-CUTTING, LAMINATING, BINDING OPTIONS, FOILING, EMBOSSEING,
ETCHING & EMBELLISHMENTS TO MAKE YOUR PROJECT AMAZING!!!
Ask us about them at your consult, and we'd be happy to help you find the perfect solution.

9 Cumnock Street, Wallacetown

P: 027 242 8109

E: mcmahondesign@outlook.com

We love designing and so excited to work with you!

OPENING HOURS:

Monday - Thursday:
9.30am - 4.30pm

Friday:
10.30am - 2.30pm

Saturday & Sunday:
Closed

WAIAU VALLEY SHEARING LTD



Simon de Vries

Julie Heaps

027 840 9867

03 226 6212

EGERTON CONTRACTING

for all your cartage needs!

Bulk Tip Unit

**Tractor available with soft hands for
loading of Baleage etc**

**ALSO Supply available of
Wood Chips / Sawdust**

Beach but-end firewood loads

PH: EAMON 027 371 8674

SOUTHLIFE Community CHURCH

Steve & Sharon
are Pastors

and we are an area church



We believe in
Community and
endeavour to
show this the
best we can by
the way we
care and serve!



We warmly
invite you to
come along to
one of our
services.
It would be great
to see you

Sunday Service

10am Truro St, Orepuki

**Steve & Sharon Calder
027 321-1108**



Agricultural Contractors servicing Western Southland and beyond.

BALAGE - SILAGE - GROUNDWORK - FEED TRADING
Nigel 021 226 6156 / fowlecontracting@gmail.com

WaterForce

Irrigation Systems
Pumping & Filtration
Effluent Dispersal
Water Management

20 Winton Hedgehope Highway, Winton
03 236 9805 www.waterforce.co.nz
0800 4 FORCE (4 36723)



WAIĀU AREA SCHOOL

Year 1-13 Education

Live to LEARN, LEARN to Live

Kia ora Western Wanderer Readers!

2023 has started extremely well for WAS. We are all immensely proud with the way our tamariki and rangatahi are demonstrating our WAS values and their caring attitudes to one another. WAS has 20 new students along with three new staff members. Our school roll (could hit 150 during the year) is stable along with the teaching staff. Please look out for our school newsletters and Facebook posts for information, celebrations and pics. Here is WAS' staff and their responsibilities. **Teaching Staff:**

Mr Andrew Pardoe-Burnett - Principal and Hard Materials Teacher. **Mr Richard Bennett** - Senior Leadership Year 11-13, Health & PE, Gateway, Net NZ, PB4L coach. **Miss Jasmine Quinn** - Senior Leadership Year 9 & 10, English, Languages & Mitey. **Miss Clare Robinson** - Senior Leadership Year 1-8, Year 7&8 Teacher, Mitey & Bus Controller. **Miss Brooke Anderson** - Primary Teacher - 0.2 release teacher term 2 onwards. **Miss Skye Walton** - Year 4-6 Teacher, Cultural Responsiveness lead. **Mr Chris Wedderburn** - Year 2-3 Teacher. **Mrs Donnah Cleaver** (0.8) and **Mrs Gemma Bennett** (0.4) - New Entrant - Year 1 Teachers. Donnah - support for primary leadership, Mitey and release teacher. **Mrs Lisa Redhead** (has left but is available to come back one day a week) - Music - Term Two onwards. **Mr Deon Hourston** - Year 7&8 Maths and PE Teacher. Agriculture Teacher. **Miss Jordan Paskell** - Senior English, Social Studies, History & Geography teacher. **Mrs Hannah Wilson** - Art, Photography & Horticulture Teacher. **Mr Paul Maloney** - Maths Teacher, NCEA and Principal's Nominee. **Mrs Florence Chatelier** - Science, Biology & Physics Teacher. **Mrs Chrissy Lampitt** - Library and STEAM Teacher. **Mrs Roberta Gover** - Food Tech & Hospitality Teacher & Free Lunches in Schools (FLIS) leader. WAS is also very fortunate having **Asha Carr** coming out for one day a week teaching Kapa Haka. Asha will also be looking at ways to incorporate more Tikanga into WAS. **Support Staff:** Mrs Charmaine Wedderburn - Office Manager. Mrs Nina Smith - Office Support, TA and BoT Secretary. Mr Warwick Hawley - Property Manager & Hard Materials. Mrs Jo Flynn and Mrs Paula McLennan - FLIS and Student Support. Teacher Aides - Mrs Kiwia Howley, Mrs Robyn Stanning, Mrs Mel Templeton and



Liquid Foliar Spray Contracting

- ✓ Fertiliser
- ✓ Fish Fertiliser
- ✓ Gibb & NBoost
- ✓ Herbicide
- ✓ Humates
- ✓ Soil & Herbage Testing

Jon – 021 575 071



C: 0274 247 102

T: 03 225 8652

E: admin@drakeplumbing.co.nz

KIERAN DRAKE
Certifying Plumber
& Drainlayer

Mrs Rachel Pardoe-Burnett. Lab Technician - Mr Richard Hazle, School Cleaners - Mrs Karen Reid, Mrs Cheryl Baldwin, Ms Chenille Kennedy & Mrs Anne-Marie Erskine (relief cleaning).

Board of Trustees (BOT): Rachael Poole - Finance, Self Review & Chairperson. Keri Potter - Communication & SchoolHouses. Raissa Newton - Social & Wellbeing. Jim Keating - Property. Matthew McLennan - Health & Safety and Property support. Oli Abbott - Student Rep & Student wellbeing /achievement. Charmaine Wedderburn - Staff Rep - Student achievement. Andrew PB - Principal. Nina Smith - BOT Secretary.

We're very excited about what WAS is able to offer our students. We are able to provide a **wide range of subject choices** in the senior school with Net NZ (online teacher) as an additional option. Our small class sizes, positive NCEA results, student achievement and behaviour, teachers knowing their learners and a **strong sense of belonging** are all proving to be a continual success.

Here are the list of students who were top in their Year Group for 2022. Congratulations to all our tamariki and rangatahi who have improved academically and socially.


Year	Student
2019	Kana McPherson
2020	Braxton Watene
2021	Rhys Bennett
2022	Nile Walton
2023	Rhydel Binay-An



A very special mention to **Madisyn Gibbs** and **Oli Abbott** for gaining exceptional 2022 NCEA results. Oli achieved an overall **Merit Endorsement** for Level 1 and Madisyn achieved an overall **Excellence Endorsement** at Level 1 which places her in the top 5% of all students in NZ in Level 1 NCEA. We were also very impressed and proud of all our NCEA (and those Year 10 students who had a go at L1 papers) students who found success. The small class sizes, staff expertise and student willingness to succeed is proving to be a positive difference.

Please feel free to pop in and see me about WAS. I'm more than happy to show you around.

Ngā mihi Andrew PB



Ice cream & Milkshake Parlour

16 Orawia Road
8am - 4:30pm every day

2023 - a whole new year for us all.
Are you planning a small gathering, a birthday party, a celebration?
Do you need a nice space to meet in?
Give us a call at THE WELL - 027 247 2524

The setting is intimate, warm and welcoming,
The food is excellent and to your specifications
A child's birthday party, a small musical evening, a meeting of minds and ideas,
A celebration or even a small wedding
We can cater, we have the facilities,
We have your interests at heart.
But we are still **THE WELL** in the daytime too
A Sunny, Open, and Happy Place.
Open **8am to 4.30pm - Seven days** a week
Delicious all day breakfasts, waffles, toasted or fresh sandwiches (your choice)
Really delicious food made in house.
Try a Pie or Sausage Roll - you won't get better
Our range of ICE CREAMS, and MILKSHAKES will satisfy
Underground Coffee is the BEST of the BEST
THE WELL - TUATAPERE
Home of the Humpidge and where summer days are longer than anywhere else in the world!

For all your fencing requirements

WESTERN FENCING

SHEEP | DAIRY | DEER



Call BEVAN 0277 413 213

Tuatapere Freight



RUNS MONDAY TO FRIDAY
WEEKENDS BY ARRANGEMENT

Phone Brandon
027 436 4360





Make a life changing difference in your community



Your community needs you!

Hato Hone St John is currently recruiting volunteers to work across both our ambulance and event health services teams in the Tuatapere area. We can promise you no two days will be the same!

We are looking for those wanting to make a life changing difference in the Tuatapere community, who are physically fit, in excellent health, like working in a team, work well under pressure, and have the ability to complete your training with Hato Hone St John.

If this sounds like you contact Kat Andrew on **027 291 5462** or Sandra Wilson on **027 232 8479** or **sandra.wilson@stjohn.org.nz**



Rabco Ag Ltd – 021 362 766 – admin@rabco.nz
Agricultural Contracting Specialists - Western Southland



**Full silage
& baling
service**



Cultivation – including Direct Drill & Precision Drill



Effluent – Excavators - Hedgetrimming



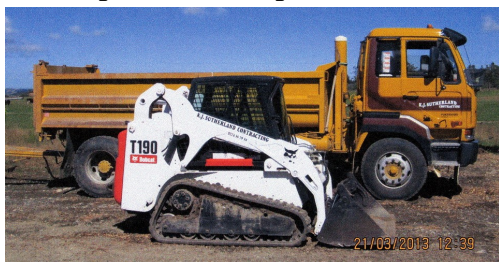
K.J. Sutherland Contracting

Bobcat T190

With attachments: Landscape Rake,
Augers and Trencher

Suitable for all landscaping, shed and yard
maintenance

Muck-spreader and tip trailer available



PHONE KEVIN
027 367 934 / (03) 225 5716



TUATAPERE TE WAEWAE Community Board

Anne Horrell, Chairperson

Contact: 021 216 9808 | altonlea.horrells@xtra.co.nz

Congratulations to those involved in the Waiau A & P Show; a great event!

The Community Board were privileged to have Constable Gary Mahuika attend an informal meeting. Welcome Gary. On this note I'm sure you will all be now aware that the local Police have solved the poisoned trees issue, with the arrest of a local man.

Other items include:

Douglas Fir Trees in The Greenheart Reserve

We have received correspondence from a concerned businessman that this stand of trees has posed a shady, icy situation (Gillies St) in winter. Following investigation they may be removed.

Railway Station Goods' Shed

This building has been secured; future use to be discussed.

At present the Merry-go-round is stored there.

John Munro (Festival Committee) is keen for a new custodian. This asset has given children great joy. Please contact **John** if you are interested in being the new operator **027 412 2925**

Better off Funding

The Community Boards' application has been successful in the approval of the Govt's Better-off Package Funding. The \$310,000 is specifically for the Railway Station initiative; a rail tourism precinct and beautification.

Toy Library

The Board has approved the repurposing of unused funds received from 2 Community Partnership Fund grants. The unused funds are due to the purchase of a cheaper bouncy castle and lock system than anticipated. The repurposed use is for 'The Great Tuatapere Duck Race' flags and toy boxes for local cafes.

Community Partnership Fund

Applications close 31 March 2023

Email sdcsouthlanddc.govt.nz



MILLARS

- PLUMBING
- GAS FITTING
- DRAINLAYING
- LICENSED BUILDER

Master Plumbers

Ph 027 4340 705 or 03 225 8567



We specialise in:

Resource consents

Farm environmental plans

Policy advice

DOC concessions

Landscape plans & assessment

We take care of the paperwork,
so you can do what you do best!

Sonya: 027 5050 077

Rebecca: 027 4246 129

www.slwp.co.nz

Locally owned & operated

Community Service Awards

Nominations close 30 September, 2023

Email sdc@southlanddc.govt.nz

Whanau Play Packs

Indoor/ outdoor activity sets will be distributed to Southland libraries, including Tuatapere: intended for children past the Toy Library stage.

Pump Track

A portable Pump Track is coming to Tuatapere and other communities. This will help gauge interest in a more permanent installation.

Recycling Station

This is currently being used for more than recycling. It is not for household items etc. Discussion will take place around alternative solutions.

Menzshed

This has been suggested as a way of engaging 'men' in a meaningful, purposeful past-time. A representative from the Riverton Mezshed group will come and chat with those interested. A time will be arranged and advertised.

Heritage Orchard

Apples are ready to pick. Remember to help yourselves to a few. Unfortunately a few trees are suffering from water stress; let's hope they perk up!

Hump Ridge Track

Trustee Paula McKenzie reported to the Board that the season is going really well and they are on track for the 2023/24 season as a 'Great Walk'.

Review into the Future of Local Government

Concern was raised in 'Public Participation' at the last Board meeting that there has been little communication from the Council/Community Board. An independent panel has had this responsibility - not local government. Submissions were due on the 28th February. Information was posted on Facebook and the Local Government website. 21

For Landscaping, Land Maintenance, Gravel Supply & Cartage

**GRADES OF
CRUSED & SCREENED GRAVELS,
ALKATHENE LAYING, ROOTRAKING,
FARM TRACKS, DAIRYLANES**



**ELEVATOR SCRAPER,
BOBCAT & ATTACHMENTS,
LANDSCAPING, TRENCHING AUGERS**

Supplies of Gravel Ex Waiau River

River Run Screened Grades

Concrete Gravel Pea Gravel

Rejects for soak holes Crushed - AP30 & AP65

Peebles for Sheep and Cattle yards
and calf sheds

Fines suitable for cow lane capping

**K J SUTHERLAND
GRAVELLING &
AGRICULTURAL CONTRACTOR**

**2475 OHAI-CLIFTON H/WAY
ORAWIA RD2 OTAUTAU 9682**

Ph 0274 367 934

Rural Lifestyle Residential
For all your Shearing Services.

SKIPPER Contracting
TAKITIMU

**No mob too big
No mob too small
We do it all!**

**Contact Ricky Skipper to book in now
027 351 2620**

Specialising in
Dairy Conversions
Rural Fencing
Post & Rail

H Gill Fencing,
Eastern Bush
Phone 021 225 5489
After Hours 03 225 5488
Email hamish@hgillfencing.co.nz

FCANZ
Fencing Contractors Association NZ

Shirley Whyte
Your local realstate specialist living & working in Western Southland
now also an Accredited Justice of the Peace.

for:

Friendly service, reliability, sound local knowledge
in Western Southland, Te Anau & Stewart Island
All enquires welcome - all calls answered

Harcourts
Harcourts Real Estate Ltd Licensed Agent REAA 2008

M 027 504 52200 O 03 214 4080
E shirley@harcourtsin.co.nz
W www.harcourts.co.nz

accelerate
PHYSIOTHERAPY

office@acceleratephysio.co.nz
40 Deveron Street, Invercargill
(off street parking)
0800 291 475

Accelerate is a gentle form of exercise, effective in providing long term solutions
after an injury, especially low back pain.

We have interests in:

- > Spinal/Back & neck injuries
- > Sporting Injuries
- > Running, Cycling & Multisport
- > Men & Women's Pelvic Health
- > Acupuncture
- > Balance & Dizziness
- > Workplace Injuries / Ergonomic Onsite
- > Work Evaluations & Educations
- > Pilates

Joel Barnes
BPHYT, BEXSCI

Andrea Robertson
BPHYT, PG Cert ACUP

Andrea Murray
Dip PHYT Dip M.I.

Find us on facebook

www.acceleratephysio.co.nz

Hauroko
VALLEY PRIMARY SCHOOL

KIA ORA, NI HAO, KAMUSTA
Western Wanderer Readers

Welcome to 2023! Our students have been back for February where we have settled into routines with classrooms humming. Welcome to Sally who makes up the dynamic duo/ teaching team in Rata. Welcome back to Lynelle returning to Totara, on Wednesdays throughout Term 1. Classes are completing Statistical Investigations, this is relevant given this year is a Census Year. Our writers continue to flourish with our sentence style teaching and learning programmes. Having students articulating their knowledge of precision and expansion and demonstrating this in their writing is remarkable! Next up our team participates in Structured Literacy as part of our Professional Learning journey.



Rata spent time developing surfing skills while at Trees, Colac Bay with Jess from Southland Surf School. One of our school values was clearly in action as students showed te manawanui/perseverance in moving from the prone position to standing on their board and successfully surfing the waves. They were joined by a few dolphins, how uniquely Southland is that!



HAUROKO HAPPENINGS

Thanks to Tui Base Camp for supporting our Year 7&8 students to prepare their own sausages as part of Food Tech. The iconic Tuatapere sausage is part of our local history and a specialist craft; as discovered by our learners. Thanks to our expert's guidance where everyone was successful in the process.



Our tamariki have been tracking Healthy Active Learning thanks to the evaluation study being completed by Massey University. This coincides with our Active Southland facilitator Mark supporting us to "Rethink Athletics". This shows clear pathways for field events and the progression of techniques while maximising involvement. All supporting wellbeing.



Save the date for Saturday 11th March for the Blackmount Trail Ride. This is Hauoko Valley Primary School's major fundraiser. All funds go directly to benefit all our children. It is an exceptionally fun day out for families with beautiful rides. We would love to see you!

Thank you!

Thanks to everyone that supports us in our learning journey, going above and beyond for our tamariki.

We look forward to sharing more of our learning adventures with our Western Wanderer whanau soon!



Registered ELECTRICIAN

For all electrical work
No job to small
A/Hours service available

Jay Brownlee
8 Carlyle Street, Tuatapere 9620
A/H 03 226 6673
Mob 027 4965 863
sparkieintuatapere@gmail.com

For all your Accounting and Tax Solutions

Ask for Janice or Trevor England

☎ 03 2266110

Aparima Accounting Ltd
57 Main Road Tuatapere

CANTERBURY CARS **4WD** Specialists

For all your vehicle requirements

Cars, utes, 4WDs, vans

Finance available

Contact: Murray Dowling
027 556 2655

Visit our website
www.canterburycars4x4.co.nz

Tui Base Camp



Open from 8:00am every day!

Kitchen open until at least 7.30pm

**COME IN &
CHECK OUT OUR SPECIALS**

Ask for one of our Coffee Cards with your next Amore Coffee (Dine in or T/A)

Pre-order your morning tea and lunches by calling **(03) 226 6250** and we can have it ready for you to pick up when it suits you.

Don't forget we now have a mini-van!

Contact us to organise a night out at Tui Base Camp (pick-up and drop-off).

Enquires to **James 027 837 3521**

For all of your dine in and takeaway requirements including:

In-house roasted Amore Coffee
In-house made pies, sausage rolls, cheese rolls

Range of breakfast options
Packed lunches
Catering

Phone: (03) 226 6250

www.tuibasecamp.co.nz



**Keep an eye on our
Facebook Page
for our latest updates!**



Ratty Says ...

Waiau Memorial Library



Who had fun at the Show? ME!!!



I got to the show nice and early with my entries. I don't think there were as many entries as the last time I went, but what was there was really good. My entries were needle felted houses, a rat bookmark (No he wasn't a relative that got squished in a rat trap) and the HUGEST zucchini I had ever seen. After I finished making friends with the frog, I went and had a look at some other entries. I found some really, really yummy looking muffins. I wanted to eat one, but I wasn't allowed to. They said only Judges can do that (I wonder if I can volunteer for the job next year). There were some cards, one was made with little yellow flowers glued to it, and there were heaps of colouring in pictures.

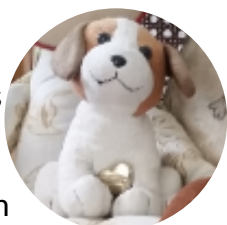
I was so sure my zucchini was going to win the Skites section of the Produce, but would you believe that someone brought in an even more GINORMOUS zucchini than mine. I was NOT a happy Ratty. The zucchini needed to disappear. There was plotting to be done. I had the most brilliant Ratty idea ever. I 'borrowed' a fork and stabbed the zucchini. I figured if I did it enough, the zucchini would end up being cut in half. I was having soooo much fun, right up until they put me in time out. They thought I was trying to eat the zucchini. Silly people. Ratty doesn't eat zucchini. But, Ratty LOVES



tomatoes and guess where time out was? Nice and close to the tomato, and they didn't take my fork away from me ...

The Adventures of Charlton

Just a really short story this time because by the time you read this I am going to be in Germany!



I had no idea what was going on in the household a few weeks ago, lots of chatter and talking about places to visit: Frankfurt, Hamburg, Hamlin...HAMLIN, that rings a bell. What was it about Hamlin? I suppose I will find out, perhaps I should look it up in a book from the library.

Then the suitcases came out of storage. THAT IS AN OBVIOUS SIGN, no mistaking.

"They are going to go on a trip away!" I thought and waited. Sure enough, clothes were sorted, coats brushed off and gloves found. AHA, we are going to go to a cold place. But - hang on - no one has asked ME yet if I want to come along. So just in case I could be left behind, I made sure that they MUST take me with them!!! I have been sitting on the suitcases now for a few days. Not sure when we leave, but it must be soon.



A house sitter has been organised to care for the dog and the plants and a housekey handed over. SOON - real soon I thought and then someone said "Next Monday", we have to be at the airport real early to fly to Christchurch. From there a long flight to Singapore and from there an even longer flight all the way - halfway around the world - to Frankfurt/Main in Germany.

I will write to you from there and tell you about the visit to Hamlin in particular - I still cannot think of what the story is about Hamlin...

I hope they run out of time to give me a bath before we leave, as I am sure I will have to have one when we return. I shudder at the thought!

Now I am off to yet another adventure, I cannot wait, I am sooo excited!



Cheerio - or TSCHÜSS as they say in Germany.

Alex Reid CONTRACTING

**Paddock Cultivation from
Ploughing to Sowing
Dry Hire available
Aerating
Direct Drilling
Ridging
Mulching**



Dairy Lane Maintenance

Tip Trailers • Vibrating Roller • 2 Tip Trucks

Sheep Conveyor

Drenching, Vaccination etc • 3 way draft

Large Skid Steer for calf shed cleaning, loading Muck Spreaders etc

4 Muck Spreaders • 16,000 litre Slurry Tanker
Pond Stirrer • Umbilical Slurry System



Rural Contractors
NEW ZEALAND

**PHONE ALEX
0212775308 CELL
03 2255377 HOME**

 **Hens for Sale \$10ea**
 18 month old Brown Shavers
 Ex-commercial layers from
 Te Waewae Eggs, Te Waewae Bay
 True Southland Free-range
Ph Rob 03 226 6805 or 022 044 2086

COMMUNITY

Outlook

Myles Greber

Rubbish

There has been quite a bit of discussion around the dumping of non-recyclable rubbish at the Tuatapere recycling centre, both around the Community Board table and on Social Media. Most have included the suggestion of putting a camera up to 'catch' the offenders.

I don't believe simply installing a camera will solve the problem – it will just see the problem moved to roadside or bush dumping, which is worse than dumping at the recycling centre. This is an issue that has existed for some time and needs to be addressed by the Community Board/Council. The cost of doing the right thing, using Otautau Transfer Station, is significant.

Some suggestions that come to mind:

1. Provide a regular (6 monthly?) rubbish drop day, where specific types of rubbish can be placed at the recycle centre (or other suitable location) and is taken away by the Community Board/Council. This could be a free, donation or pay for use service. It could be manned by volunteers or paid staff/locals.
2. Provision of permanent skip bin(s), monitored by camera, where specific types of personal rubbish can be placed for collection.

I'm sure there are other options to consider. Since there will likely be an associated cost, perhaps there should be at least a partial 'user pays' component?

Do you have a suggestion? If you have a suggestion, why not let our Community Board members know. You can send your suggestions to me, and I'll present them to the Community Board.

You can email me at: info@onnaturesedge.co.nz

Note: This is part of the Community Outlook post from 15-02-2023 that can be found on the www.onnaturesedge.co.nz website.

 **Aaron Cranston Building Ltd**
027 252 7933

- ✓ Renovations
- ✓ Extensions
- ✓ New Builds
- ✓ Sheds/Farm buildings
- ✓ Decks
- ✓ Pre-purchase house Inspections

Call us for any building requirements
 Ph 027 252 7933 email: aaroncbltd@gmail.com

 **ANDERSON DRAINAGE SERVICES**
Keeping Southland Flowing



- ✓ Tile Cleaning
- ✓ Culvert Cleaning
- ✓ Septic Tank Blockages
- ✓ Domestic Blockages
- ✓ Rural Drain Blockages

Fraser Anderson
 021 162 0210
fraseranderson1@gmail.com
 Forest Hill, Southland
 Follow us on Facebook
Call us today!

WANTED TO BUY
 Possum Fur, Hard deer,
 Antler, Deer Velvet.
 Phone Leith 027 496 3721



RAISE A GLASS TO MARCH SAVINGS



<p>\$24.99 EACH</p> <p>ODD Company Good & Great 10pk can and bottle range</p>	<p>\$24.99 EACH</p> <p>Cruiser 7% 12pk can range</p>	<p>\$25.99 EACH</p> <p>Not Stocked</p>	<p>\$25.99 EACH</p> <p>Smirnoff Red Ice (incl Zero) 5% 250ml 12pk cans</p>	<p>\$26.99 EACH</p> <p>Not Stocked</p>	<p>\$26.99 EACH</p> <p>Not Stocked</p>	<p>\$27.99 EACH</p> <p>JB & Cola; CC 330ml 4.8% 10pk bottles</p>	
<p>\$29.99 EACH</p> <p>Coruba (incl Zero 10pk bottles) 7% 250ml 12pk cans</p>	<p>\$33.99 EACH</p> <p>Not Stocked</p>	<p>\$39.99 EACH</p> <p>Jim Beam Canadian Club (incl Zero) 18pk 330ml cans</p>	<p>\$41.99 EACH</p> <p>Not Stocked</p>	<p>\$10.99 EACH</p> <p>Not Stocked</p>	<p>\$12.99 EACH</p> <p>Wolf Blass Yellow Label range (ex PN)</p>	<p>\$13.99 EACH</p> <p>Not Stocked</p>	<p>\$15.99 EACH</p> <p>Villa Maria Cellar Selection Esk Valley ranges (ex PN, Syrahs Grenache & Merlot Cab Sav)</p>
<p>\$15.99 EACH</p> <p>Not Stocked</p>	<p>\$22.99 EACH</p> <p>Not Stocked</p>	<p>\$21.99 EACH</p> <p>Not Stocked</p>	<p>\$37.99 EACH</p> <p>Not Stocked</p>	<p>\$40.99 EACH</p> <p>Not Stocked</p>	<p>\$41.99 EACH</p> <p>Malibu Kahlua (incl salted caramel) 1Ltrs</p>	<p>\$42.99 EACH</p> <p>Not Stocked</p>	<p>\$44.99 EACH</p> <p>Larios 12; Rose Citrus 1Ltrs</p>
<p>\$44.99 EACH</p> <p>Jim Beam Canadian Club (incl spiced) 1Ltrs</p>	<p>\$46.99 EACH</p> <p>Dewar's 1L</p>	<p>\$50.99 EACH</p> <p>Bacardi (incl Spiced, Gold) 1Ltrs</p>	<p>\$59.99 EACH</p> <p>Tanqueray 1L</p>	<p>\$61.99 EACH</p> <p>Not Stocked</p>	<p>\$78.99 EACH</p> <p>Jim Beam 1.75L</p>	<p>\$55.99 EACH</p> <p>JOHNNIE WALKER All 700ml</p>	<p>\$15.99 EACH</p> <p>Not Stocked</p>
<p>\$19.99 EACH</p> <p>Not Stocked</p>	<p>\$21.99 EACH</p> <p>Not Stocked</p>	<p>\$23.99 EACH</p> <p>Not Stocked</p>	<p>\$24.99 EACH</p> <p>Somersby 12pk bottle range</p>	<p>\$24.99 EACH</p> <p>Not Stocked</p>	<p>\$26.99 EACH</p> <p>Not Stocked</p>	<p>\$26.99 EACH</p> <p>Monteith's (classic & batch brewed ex cider) 330ml 12pk bottle & can ranges</p>	
<p>\$27.99 EACH</p> <p>Lion Red; Waikato or Speights 15pk bottles</p>	<p>\$28.99 EACH</p> <p>Steinlager 15pk bottles</p>	<p>\$29.99 EACH</p> <p>Heineken 15pk bottles</p>	<p>\$34.99 EACH</p> <p>Tui; Export Gold; Extra Low Carb; DB Draught 24pk bottles</p>	<p>\$39.99 EACH</p> <p>Export 33 24pk bottles</p>	<p>\$43.99 EACH</p> <p>Not Stocked</p>		



Promotion period between 1/3/2023 to 31/3/2023. While stocks last. Promotion only available at participating stores. Please contact your local store to confirm whether they are participating in the promotion and check the pricing in-store prior to purchase. Online pricing will vary.

100% **NEW ZEALAND** OWNED AND OPERATED
thirstyliquor.co.nz

FOLLOW US ON SOCIAL MEDIA



ASK ABOUT LOYALTY CARD BENEFITS & GIFT VOUCHERS



HEATPUMP SERVICING

Contact Nic on
027 3200 782

DRIVE IN MILKER WANTED - PAHIA

160 cows in very clean
24 aside herring bone.
Phone Tony McDowall 03 234 5154

Want to know more about the Hump Ridge Great Walk Project?

Project Webpage: Get all the facts and stay informed via

www.doc.govt.nz/hump-ridge-great-walk-project

Project Email: Contact the project team at any time to ask questions or to be added to the distribution list to receive these newsletters:

HumpRidgeGWP@doc.govt.nz

Media Enquiries: please direct to
media@doc.govt.nz

TUATAPERE OUTDOORS & HARDWARE

For all your

Gardening tools, lawn care, garden hoses, insect and disease sprays, potting and compost.

We have those building requirements for that weekend job with a good selection of silicone, nails, screws and bolts.

New fishing rods and reels, fishing lures, good selection of soft bait, fishing nets, flounder and eel nets.



Good selection of giftware.

Come in, check out what we have.

Contact:

Judy 027 225 8192

Paul 027 890 3602

Shop (03) 226 6363

PLEASE HAVE YOUR ARTICLES, NOTICES, OR
UPDATED ADVERTS FOR THE
WESTERN WANDERER SENT IN BY

**20th of MARCH
(for April's Issue)**

IN & AROUND THE COMMUNITY



Department of
Conservation
Te Papa Atawhai

HumpRidge
track

Updates from the Hump Ridge Great Walk Project

Our way of keeping you up to date with the news and latest information from the team developing the Tuatapere Hump Ridge Track to Great Walk status.

Kia ora!

Welcome to the latest project news. Keeping in touch with you about the project is important to us. We will keep sharing how we are doing but also any constraints or delays we encounter.

We published a project newsletter on 22 February 2023 and a copy can be found on our project webpage – where you can read about the key achievements so far. If you want to directly receive a copy of project newsletters, get in touch with us via our project email.

Small population of BIG snails.

A goal of any DOC project is to ensure construction work is managed well to prevent any adverse effects to the biodiversity of the area we're working in.

Our track teams have been carefully managing any possible impact to the population of Powelliphanta snails located near Okaka Lodge. These snails are among the largest snails in the world, and also among our most threatened invertebrates.



Powelliphanta snail

Prior to beginning their assigned track work, the contracted construction teams were provided with fact sheets that explained what the snails looked like, where they are likely to be found, and what to do if they find one (or many) during their work. To date, no snails have been located in the work areas.

One critical thing we want to share is that it is against the law to take or hold Powelliphanta shells without a permit.

Our biodiversity colleagues are super keen to hear from anyone that finds Powelliphanta snails or shells.

Leave them where they are but send us your observations – i.e., photos, GPS points, description of the find, location, etc.

You can read more snail news at

<https://www.doc.govt.nz/nature/native-animals/invertebrates/powelliphanta-snails/>

Completed Track Upgrades

The 61 km track has been divided into 7 sections. This will allow the construction contracting teams to undertake the track upgrade work concurrently but also focus on the section most in need of repair.

John Henderson Construction, (JHC) one of the successful contractors for the track construction work, recently completed track upgrade work to two sections.

Section D is the piece of track from the Edwin Burn Viaduct for 1.5km towards Okaka which trampers encounter during their second day of hiking.



See "Path-After" photo to the left.
Section O goes from the Okaka Junction up to the Okaka Lodge Link Track.
See 'Steps-After' photo to the right.



Project Progress, Tasks and Timeframes

We know there is always keen interest in how the project is tracking. Some recent key achievements are listed below – please see our project webpage for the complete list.

December 2022: The upgrade work on Track Section D and O completed by JHC.

January 2023: Track Section A started – Track Burn Entrance to Flat Creek Junction - by JHC. Track Section C started – Okaka Junction to National Park Boundary - by WestReef Services (WRS).

February – March 2023: Continued construction works on Sections A & C.

April 2023: Anticipated start for Track Section B - Flat Creek to Okaka Junction - by JHC. Our next project newsletter will be due out.

Other project work keeping us busy:

- Negotiating legal easements with landowners to secure public access.
- The development of the waharoa (gateway) for the track entrance at Rarakau carpark.
- The ongoing monitoring & protection of the heritage and cultural values/impacts for the track and environs, throughout the construction period.
- Working with consultants on the digitising and archiving of historical records.
- The preparation work for the tendering process of the Rarakau Car Park upgrade works.
- Prior to Christmas, the process began for the interpretation and story-telling package. Proposals received from interested parties were evaluated and are currently in the internal procurement phase.

Safety during track upgrade works

The contractors are responsible for managing the worksite, including visitor safety and access through the sections of track under construction. Track users & visitors are asked to obey all signage and instructions and expect minor delays from time to time.

Information will be also shared by the Hump Ridge Track Operations Office and on the DOC website.

Our project webpage contains the map that shows the sections of track. In this update, we have begun sharing the contractor company doing the work at each section, their start date and progress of their track upgrade work.

Lynley McKerrow

Celebrant
Funeral and Marriage

P: 0272 974 767
E: nanamac60@xtra.co.nz

with care - with love - with dignity

TUATAPERE HANDYMAN SERVICES

Barry Bennett
(03) 226 6730

- **Painting - Interior/Exterior**
- **Waterblasting**
- **Spider & Fly Spraying**
- **General Repair Work**
- **Lawnmowing**
- **Weed Spraying**



RAW FARM HOMEKILL

Wayne Saunders
Qualified Butcher

027 457 6350

rawfarming@yahoo.co.nz

82 Clifden Highway
Tuatapere

Cut up the way you want

- Beef
- Pork
- Sheep
- Venison

Other game meats
Traditional Smallgoods

Remember to ring & book in your beef! It's getting busy!

BARRETT *Ag* LTD

FULL SILAGE AND BALEAGE SERVICE



ALL CULTIVATION
INCLUDING DIRECT DRILL
AND STRIP TILLING - PRECISION PLANTING



EXCAVATION
20 TONNE DIGGER/ GRADER
D85 BULLDOZER/ ROLLER
TIP TRUCKS AND TRAILERS



Barrett Ag Ltd
Ph: Kahu- 027 5183 448
E: barrettagltd@gmail.com
FB: Barrett Ag





Tim and Superior go the extra mile

Are you frustrated with the lack of service from your local fertiliser consultant, peddling the same advice year after year regardless of your production outcomes, environment and sustainability?

Give **Tim Adcock** of Superior Fertiliser Specialists a call. He will bring a whole new meaning to service and client/advisor relationships.

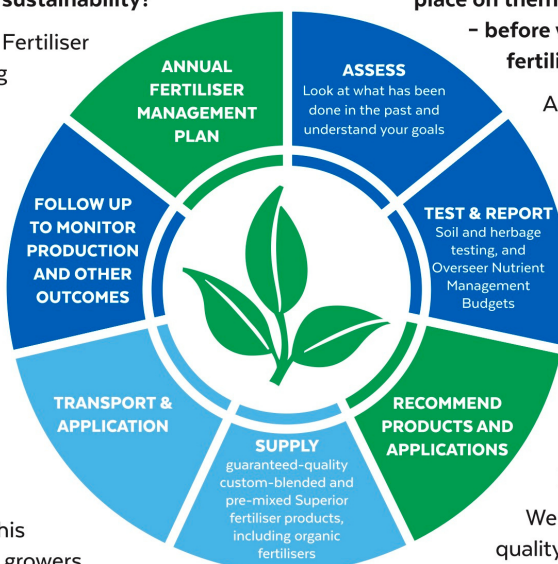
Tim is a key member of the highly skilled Superior team totally committed to helping you develop healthier, more productive soils and plants.

We form a specialist fertiliser company that provides high quality advice and products at competitive prices. We have been doing this for South Island farmers and growers for just on 20 years.

Superior promotes a total soil care package. First, we get to understand the make-up, nutrient status and health of your soils, the demands you are going to place on them, and your production goals – before we apply one kilogram of fertiliser.

A comprehensive regime of vigorous soil tests will be undertaken and the results will provide the basis of a Superior Fertiliser Management Plan customised for your unique situation. This will complement your farm's Environmental Plan and provide the blueprint for an ongoing annual fertiliser programme.

We then supply guaranteed-quality solid fertiliser for your pasture and crops, monitor production and other outcomes, and update your Plans as required.



It's free to talk so don't hesitate to give Tim a call.
Phone 021 418 224



Tim Adcock
Fertiliser Advisor
Otago/Southland
021 418 224
tim@superior.net.nz

 FERTILISER SPECIALISTS
SUPERIOR
www.superior.net.nz

TUATAPERE SERVICE STATION

20 ORAWIA ROAD
PHONE: 03 2266475

HYDRAULIC FITTINGS & HOSES

We stock a good range of crimp on hydraulic fittings for agriculture hoses,
we can also repair or make up new hoses.

FOR ALL YOUR MECHANICAL NEEDS

Car & 4WD WOF's
Trailer, Caravan & Motor bike WOF's
Servicing all vehicles
Light Engineering
New Tyres
Electrical Work
Scanning of most vehicles

HARDWARE IN STOCK

METRIC BOLTS & NUTS
IMPERIAL BOLTS & NUTS
GUTTER BOLTS
DYNA BOLT
COACH BOLTS
TEK SCREWS
WOOD SCREWS
SELF TAPPING SCREWS
HINGES, BRACKETS, CATCHES



NZ TRANSPORT AGENCY
WAKA KOTAHI

WE CAN PROCESS ALL YOUR

CHANGE OF OWNERSHIPS
VEHICLE EXEMPTIONS
CANCELATION OF REGISTRATION
CHANGE OF HUBOMETER
REGISTRATIONS
ROAD USER CHARGES

HOURS

Monday to Friday 8.00am-5.00pm