



WESTERN Wanderer

Tuatapere | Clifden | Orawia | Blackmount | Monowai | Colac Bay | Orepuki

Issue 253

At a glance ... what events are on this month?

FEBRUARY 2023

MONDAY	TUESDAY	WEDNESDAY	THURSDAY	FRIDAY	SATURDAY	SUNDAY
		1 School Term 1 Begins Tuatapere Amenities Trust Funding Applications open	2	3	4 Tuatapere Community Market The Shed at the Well 10-1pm	5
6 Waitangi Day	7	8	9	10	11 83rd Waiau A&P Show Tuatapere Domain 	12
13	14  Valentine's Day	15 Tuatapere & Districts Promotions Inc Meeting - 7pm WTCC	16	17	18	19
20	21	22	23	24	25 3rd Annual Great Tuatapere Rubber Duck Races First Race: 11am Boundary Creek, King St 	26
27	28	1	2	3	4	5
Coming up ...	Saturday 11 March Blackmount Trail Ride (HVPS Fundraiser)	Tuatapere RSA Bursary Trust Applications close 31 March	Tuatapere Amenities Trust Funding Applications close 30 April			

Special thanks to

COMMUNITY NOTICES & EVENTS

HANDY PHONE NUMBERS

EMERGENCY

POLICE /FIRE/AMBULANCE: **111**



MEDICAL CENTRE: (03) 2266 123

TUATAPERE POLICE STATION:
(03) 2269 020

TUATAPERE COMMUNITY WORKER:
027 757 5983

HAUROKO VALLEY SCHOOL OFFICE:
(03) 2266 753

WAI AU AREA SCHOOL OFFICE:
(03) 2266 285

TUATAPERE CEMETERY TRUST:
(03) 2266 065

CHAMBERS SERVICE STATION:
(03) 2266 654

TUATAPERE SERVICE STATION:
(03) 2266 475

TUATAPERE FOUR SQUARE:
(03) 2266 898

TUATAPERE OUTDOORS & HARDWARE:
(03) 2266 363

Want to know more about the Hump Ridge Great Walk?

For information or to book/walk the Tuatapere Hump Ridge Track – please contact the Track Operations Office directly via www.humpridgetrack.co.nz

Project Webpage: Stay informed with the facts and news via www.doc.govt.nz/hump-ridge-great-walk-project

Project Email: Get in touch to ask questions or to be added to the newsletter distribution list via email: HumpRidgeGWP@doc.govt.nz

Media Enquiries: please direct to media@doc.govt.nz

Want to advertise in the Western Wanderer?

Spaces are limited

For Details/Pricing please contact
yourwesternwanderer@gmail.com

TUATAPERE VOLUNTEER FIRE BRIGADE

The team at the Tuatapere Fire Brigade recently took up the challenge to participate in Movember with the proceeds raised going toward Tuatapere SPOT.

The members raised \$360 towards this great cause.



SOUTHERN LIFE MEMBERSHIP AWARD FOR LEGEND PETER TEMPLETON

On New Years Day 2023 a very special member of Southland Otago Axemens Centre was awarded a Southern Life Membership.

Peter Templeton is a legend in South Island Woodchopping and he has done so much over the years. A very much deserved award. Congratulations Peter!



WAIAU MEMORIAL LIBRARY

Library Hours: Fridays

10:00am - 11:30am

2:30pm - 4:00pm

7:00pm - 8:00pm



COMMUNITY NOTICES & EVENTS

Tuatapere Presbyterian Church

2023 – how time slips by

Begin your year on a positive note

How about coming to church
on a Sunday?

A great fellowship and a
friendly welcome!

Are you searching for?

Is life a bit of a struggle?

Have things not quite gone your way?

Need somewhere to reflect and
rest your mind?

Need to 'take a breath'?

How about joining with us

For a time of quiet fellowship

Waiau Valley Presbyterian Church

Main Road, Tuatapere

On **Sunday** at **10.30 am**

A time to be, to reflect and refresh

All are welcome to join us

Make new friendships, create
new moments

Need to know more?

Phone or message

Lynley on **027 297 4767**

Tuatapere Community Pool

Access Keys:

Ian Laurenson 022 608 4764

Suzanne Norman 027 422 1521

Water Quality or Maintenance Concerns:

Trevor 027 203 7854

All other queries:

President: Minessa 027 311 2112

Prices for Season Pass:

Family (immediate family in one house) \$180

Buddy key (2 x unrelated individuals) \$180

Senior Citizens Buddy Ticket \$150

Access Tag \$15

Or

One week family key hire \$30 **plus**
\$15 access tag (refundable on return)

2 hour hire \$5/adult + \$3/child **plus**
\$15 access tag (refundable on return)

LADIES OUTDOOR BOWLS TUATAPERE

We need more players!



Mondays - Practise Day - 1pm

Wednesdays - Game Day
(Times confirmed each week)

Contact Pam Cooper 027 249 0777 or
Olive Bennett 03) 2266 477

The Small Job Man

Tuatapere Area

- Butcher-Boner
- Lawn Mowing
- Weeding
- Trimming
- Water Blasting
- Chainsaw work
- Wood splitting
- Small Building work
- Fence Painting

Senior Rates

Phone John 022 164 8061

PLEASE HAVE YOUR ARTICLES, NOTICES, OR UPDATED ADVERTS FOR THE
WESTERN WANDERER SENT IN BY

20th of FEBRUARY (for the March Issue)

TUATAPERE AMBULANCE

Did YOU Know?

The Tuatapere Ambulance is a funded service by the Tuatapere Lions Club, for the residents of Tuatapere & Districts.

Should you receive an account for this service from St John, please forward it immediately to:

The Treasurer

Tuatapere Lions Club

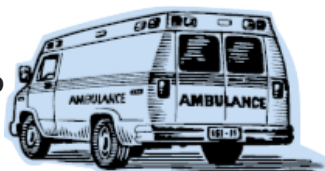
PO Box 47

Tuatapere

Sometimes we experience difficulty in receiving the invoices for YOUR trip - so PLEASE do forward them on to us.

Thank you!

**Tuatapere Lions Club Charitable Trust
Ambulance Committee**



COMMUNITY NOTICEBOARD

TUATAPERE & DISTRICTS PROMOTIONS INC NEXT MEETING

Wednesday, 15th of February at 7pm
at the Waiau Town and Country Club.

TUATAPERE DOMAIN

I would like to inform you that I am no longer Groundsman at the Tuatapere Domain. The main reason is ill health but there were some people that made my voluntary job difficult. I will go no further on that matter.

I would like to thank the following businesses and people for their help with time or equipment over the last twelve months:

Art's Contracting, Chambers Garage, DT Kings, Harry's Machines, Norman Farms, Phillips Contracting, Tuatapere Service Station, Aaron Fowle, Andrew Murch, Bede McKenzie, Bruce Loffhagen, Dwayne Woods, Gary Templeton, Glen Rumler, John O'Brien, Peter VanDam, Rangi Rickard and Roger Paterson.

I apologize if you helped me out and I have left your name out.

Dave Fletcher

TUATAPERE RSA BURSARY TRUST

Applications are now open.

Please email jwdmunro@gmail.com to get an application sent out to you.

Applications close March 31 2023.

The successful applicant will be informed shortly after, and will be presented with the Bursary at the 10am ANZAC Day service on April 25th.

All contact to **John Munro** at the above email address or **027 412 2925**

TUATAPERE COMMUNITY MARKET

First Saturday of the month. **10am - 1pm**
In the Shed at The Well.

Please text **027 297 4767** to book a \$5 table

WESTERN SOUTHLAND HEALTH SHUTTLE

The Western Southland Health Shuttle Service travels from Otautau, Ohai, Nightcaps, Tuatapere, Riverton - covering all of Western Southland. We also connect with the Invercargill-Dunedin shuttle.

The Western Southland Health Shuttle operates Monday - Friday (excluding Public Holidays).

Bookings are required by 3pm the day prior to transport.

Ph: 0800 103 046 to book.

Please book as soon as you receive your appointment.

TUATAPERE VOLUNTEER FIRE BRIGADE

We're on the lookout for members to join this rewarding organization. We are looking for persons who are, ideally, available throughout the day.

If you think that you would like to try this (sometimes lifelong) commitment, then please feel free to come and try it!

We train on Tuesday nights at 7:30pm during daylight saving and 7pm through the winter months.

We look forward to meeting with you.



POP UP SHOP

Quality second hand goods
Affordable prices

OPEN FRIDAYS AND SATURDAYS
10am to 4pm

Tuatapere Presbyterian Church Hall, Main Road,
Tuatapere. Enjoy a cuppa and a chat while there.

HOUSEHOLD ITEMS, CLOTHING, SHOES, BOOKS,
LINEN, TOYS, AND MORE.

*CHECK OUT MY WEEKLY FACEBOOK POST FOR A
SELECTION OF THE ITEMS AVAILABLE.*

Donations of items always gratefully received.
Thank you for helping us help the community.
Drop off at the church or for other options
contact me. Carol Diack 021 110 1835

WANTED BY THE POP UP SHOP

Linen - Children's Toys - Household Items
- Jigsaws - Children's Shoes -

Can you help with any of the above for our customers?

Many, many thanks for your support of the shop.

Contact Carol Diack 021 110 1835

KEEN FOR A GAME OR WANT TO LEARN CHESS?

Sundays 3-5pm at Last Light Lodge

Gold coin donation appreciated!

See you Sundays - just turn up!



NEED A JP?



The following Justices
are available
by appointment:

Tuatapere

Keri Potter 027 526 3137

Te Waewae Bay

Shirley Whyte 027 504 5220

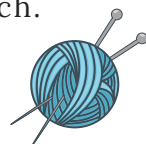
Blackmount

Nicky Baker 0276435880

WESTERN SOUTHLAND WOOLCRAFT GROUP



Spinning, Felt, Weaving, Knitting,
Crochet. Other crafts welcome!
1st & 3rd Wednesday of the month.
10am - 3pm. \$3. BYO Lunch.
Scout Den, Erskine Street.
For details please contact:
Helen Todd 022 103 9327



TUATAPERE & DISTRICTS LIONS CLUB PROJECT



SUPER DIRT

Super dirt bags are now
weighed so more in each bag!
\$8 per bag - ready for your garden!

Super dirt can be collected from:
Cracks Yard, Grove Burn Road,
in the mornings Monday to Friday.
Weekends by arrangement.

Delivery by arrangement - (but not
guaranteed)

Phone Trevor (03) 225 5864 or
Stephen (03) 226 6817



TUATAPERE COMMUNITY WORKER

Room 5 Medical Centre
69A Orawia Road

Monday - Thursday 10am to 3pm

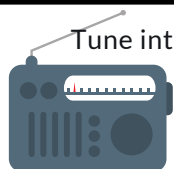
Keri Potter 027 757 5983

Email: tcworker@xtra.co.nz



Get your car washed, dried and windows cleaned
Price arranged on request!

Contact: Rex Hibbs Flat 1/26 Orawia Rd, Tuatapere



Tune into Tuatapere's very own Radio Station

88.2 FM - Tui FM!

Hits of the 80's & 90's and
today's current music!

COMMUNITY NOTICEBOARD

TUATAPERE AMENITIES TRUST 2023 FUNDING

Application forms are now available from
Tuatapere Service Station, Chambers Garage and
Tuatapere Outdoors & Hardware.

Completed application forms need to be
submitted by April 30, 2023.

The Trust wish to remind applicants that funding
for wages, administration and operational costs or
retrospective funding will not be granted.

The funds must be utilised for the benefit or
betterment of residents within the Tuatapere
Urban Resource Area.

2022 Annual Distributions

The Tuatapere Amenities Trust meets each year
to consider applications for funding submitted by
local organisations for projects they are
undertaking.

The Trust wish to announce the successful
applications for the 2022 year:

Waiau Star Football Club - \$23,390

Towards cost of roof and spouting replacement.

Waiau Squash Racquets Club - \$6,200

Towards upgrade of furniture.

Dr Elder Book Project - \$5,000

Towards cost of publishing book.

INDOOR BOWLS

We have practice nights on Mondays 7.30pm with
competition games Thursdays 7.30pm at the
Waiau Town & Country Club.

Young players are welcome to join with training/
coaching provided.

If you'd like to join or know any who is keen ...
please email jessejculbertson@icloud.com

CALLING ALL LOCAL COMMUNITY GROUPS / SPORTING TEAMS/CODES ETC

It's free to advertise your local group, sporting
team/code in the Western Wanderer! If you want
to share the results of a game and/or tournament
or celebrate the achievements of a team member
or player - we can print that too!

6 Email yourwesternwanderer@gmail.com

SALVATION ARMY FAMILY STORE TRUCK

The Salvation Army Family Store Truck
will come out and collect large amounts
of your pre-loved furniture & other
household items. This service is free.
Please call the store to organise your visit
on **03 214 5380**



COUNTRY CORNER CRAFTS

Come in and browse and see what we have
to offer. Hats, scarves, children's knitwear,
cards, jewellery, woodware, sewing, jams,
pickles, sauces, etc.

Tuatapere souvenirs "On Natures Edge"
logo are always available.

Is anyone interested in joining to sell their
crafts? You are more than welcome to
contact us.

Want to volunteer your time & work in the
Craft Centre - let us know! It's a great way
to meet people! If you wish to view the
shop and it is closed, please ring the ladies
below to open it for you.

Louise Greber (03) 668 6001 or

Lyla Sherriff (03) 226 6187

TUATAPERE ENVELOPES

Envelopes printed with the
"Tuatapere on Natures Edge" Logo
can be purchased at Country Corner Craft
Shop 1A Orawia Road. **Cost \$4.00 per 10**



SOUTHLAND COMMUNITY LAW CENTRE

**Free legal information and advice for the community
of Southland.** 2nd Floor, Cue Building, 33 Don Street,
Invercargill. Phone **(03) 214 3180**

Freephone: 0800 550 800
(outside Invercargill city only)



COMMUNITY NOTICEBOARD

TUATAPERE PLAYGROUP

Tuatapere Playgroup welcomes all 0-5 year olds & their parents/caregivers to come join the fun!



You'll find us at **23B Orawia Road, Tuatapere**

Friday mornings from 9am to 12pm.

Bring a packed morning tea and drink bottle.

We provide a warm, friendly atmosphere for children to form bonds and learn alongside each other and a place for parents to connect.

For more info message our Facebook page or contact Gemma on **022 040 3368**

CLIFDEN PLAYGROUP

45 Otahu Eastern Bush Road. Join our FB Group to check if it's on: **Wednesday (during School Term) 9:30am - 12:30pm.** All mothers and children welcome.

Bring packed lunchbox for your child's morning tea.

Contact: Sarah **027 699 5234**

TUATAPERE TOY LIBRARY

Tuatapere Toy Library has been a toy swap/hire service provided to the young families of Tuatapere and surrounding districts since 1989.



The purpose is to create opportunities for the little people of our community to have accessibility to toys. A small contribution of an annual membership allows families to join the group and have access to the toys. For more information or questions please text or ring **Nathalie Pahl on 027 4759 075**

WE'RE LOOKING FOR LOCAL CONTRIBUTORS

Are you interested in being a regular or semi-regular writer of content for the Western Wanderer?

We're looking for people who would like to provide a short article/piece of reading for each monthly issue. It doesn't have to be every month either - you could write a one-off piece or something every other issue if you would prefer!

Perhaps you like to review books? Or maybe you've got green fingers and would like to share your garden expertise with us!

Get in touch with us at:
yourwesternwanderer@gmail.com

TUATAPERE HEALTH & GIFT SHOP

(part of Riverton Pharmacy)

69a Orawia Road

(beside the Medical Centre)

Ph: **(03) 226 6999**

12:00pm - 5:30pm Mon-Fri

Good selection of Vitamins, Giftware & Over-the-counter healthcare

First prescription drop-off from 1:30pm

Second prescription drop-off 4:30pm



<https://ehive.com/collections/202139/central-western-murihiku-southland-archive>

Central & Western Archive

If you have photos or records of the district you can contribute for digitisation/sharing.

please contact us on the following email:

CentralAndWesternArchive@gmail.com
or mobile phone: **027 211 4675**



Max's Lawn Mowing Services

Available: Weekdays 3pm til dark
Weekends 9am til dark

Prices depend on size/time spent doing the lawn

Contact Loretta (my mum)
027 462 9527

For the Tuatapere area



Looking for a babysitter or someone to mow your lawns?

Well, you're in luck!

**I'M A RELIABLE TEENAGER
LOOKING FOR SOME WORK**

Contact Jay on 027 242 2890

ESSENTIAL OILS 100% PURE GIFTS OF NATURE
Florals Trees Plants Herbs Spices Citrus

To Learn More, phone or text your local Wellness Advocate
Carol Erskine Papatotara 0274 599 654



Are you a dab hand in the garden? Or perhaps you're into handcrafts or photography? Maybe you bake the best slices or cake or make the most amazing pickle relish?

What ever it is there's a section for you to enter in this year's Waiau A&P Association's 83rd Annual Show!

So what are you waiting for? Get ready and enter on the day! We can't wait to see what you've got!



WAIU A&P SHOW

TUATAPERERE

83rd Annual Show

Proudly sponsored by



Morrifield Tunnel Houses Produce

Conditions of Entry

1. Any articles previously exhibited at any Show are not eligible.
2. All articles and garments must be unused.
3. **Entry Fee - adults 50cents per entry and children 20cents per entry.**
4. Entries close on the day. **Enquiries to: Anne-Marie Erskine (03) 226 6969**
5. Exhibitors are asked to supply their own containers and plates which should be clearly named.
6. All entries must be bona fide property of an individual exhibitor.
THIS YEAR WE ARE TRIALLING in sections 1, 2, 3, 5, 6 & 7 an open section where children aged 5 - 15 years can enter the classes as detailed in the schedule.
(So for example a child aged 10 can enter baking and will be judged in the open section not the adult section, points will be awarded to both sections separately).
7. **Entries are to be at the New Pavilion before 10:30am.** Judging will take place at 11:00am -Only authorised persons will be allowed into the Pavilion during this time.
8. Prize giving will be at the New Pavilion at 3:00pm sharp. Entries may be removed after 3:30pm.
9. Special prizes:
 - Most Points Overall - Silver Tray
 - Best Overall Exhibit - Buffalo Lodge Trophy
 - Best Exhibit for Kitchen Skills - Dorothy Muir Memorial Trophy

Section 1 - Vegetables

- | | |
|-----------|---|
| Class 610 | 3 Potatoes - White |
| Class 611 | 3 Potatoes - Red |
| Class 612 | 3 Carrots - early |
| Class 613 | 1 Cauliflower |
| Class 614 | 1 Lettuce |
| Class 615 | 1 Cabbage |
| Class 616 | 1 Cucumber |
| Class 617 | 3 Tomatoes (<i>leave stalk on</i>) |
| Class 618 | Collection of Herbs
(<i>1 sprig of each</i>) |
| Class 619 | Selection of Vegetables on tray
(<i>1 of each</i>) |
| Class 620 | 3 Onions |
| Class 621 | 3 Pods of Peas |
| Class 622 | 3 Pods of Beans |
| Class 623 | 3 Beetroot |
| Class 624 | 3 Stalks of Rhubarb |
| Class 625 | 1 Sprig Parsley in a jar |



Section 2 - Flowers

- | | |
|-----------|--|
| Class 626 | 1 Catcus Dahlia |
| Class 627 | Pom Pom Dahlia |
| Class 628 | Dahlia Head |
| Class 629 | Hybrid Tea Rose |
| Class 630 | Best Perfumed Rose |
| Class 631 | Miniature Rose (<i>any variety in a container single bloom only</i>) |
| Class 632 | Rose Head Floribunda |
| Class 633 | 3 Pansies (<i>assorted colours</i>) |
| Class 634 | Hydrangea |
| Class 635 | Lily (<i>truss</i>) |
| Class 636 | 1 Carnation |
| Class 637 | Unspecified Flower |
| Class 638 | Any Floral Arrangement
(<i>maximum height 18 inches</i>) |
| Class 639 | 3 Annuals in a Vase |
| Class 640 | Gladiola |



All classes in this section are open to children up to 15 years

All classes in this section are open to children up to 15 years

Section 3 - Baking

- Class 641 1 Decorated Cake
- *Ocean Themed*
- Class 642 3 Savoury Muffins
- Class 643 Pizza - 25cm or bigger
- Class 644 3 Chocolate Chip Biscuits
- Class 645 4 Truffles on a plate
- Class 646 3 Pieces Square (*same type*)
- Class 647 4 pieces of one type of
Homemade Confectionary
- Class 648 Gift Basket (*3 varieties of Biscuit*)
- Class 649 Afternoon Tea -(*2 Savoury &
3 Sweet presented on a tray*)
- Class 650 1 Loaf, Gingerbread
- Class 651 Males ONLY - 1 Baked Item

**All classes in this section are open to
children up to 15 years**

Section 5 - Sewing, Knitting and Crochet

- Class 752 Sewn Garment
- Class 753 Unspecified Sewn Item
- Class 754 Patchwork Item
- Class 755 Applique
- Class 756 Hand Knit Baby's Garment
- Class 757 Hand Knit Garment
- Class 758 Knitted - Facecloth or Dishcloth
- Class 759 Crochet Baby Garment
- Class 760 Crochet Item including
Facecloth or Dishcloth
- Class 761 Crochet Toy

**All classes in this section are open to
children up to 15 years**

Section 7 - Photography

**All photos - not to be framed.
Must be standard print size and not
previously exhibited. Please put name
and class number on the back of photos.**

- Class 772 Landscape
- Class 773 Animal Study
- Class 774 Nature Study
- Class 775 Garden Scene
- Class 776 A Little Humour!
- Class 777 Action Shot
- Class 778 Calendar Shot
- Class 779 A Study of People
- Class 780 Local Event
- Class 781 Night Shot
- Class 782 Water Scene
- Class 783 Sport & Recreation
- Class 784 4 Photos of one event on a A4 Card
- Class 785 A Black & White Photo

**All classes in this section are open to
children up to 15 years**

Section 4 - Preserves

- Class 742 Preserved Apricots
- Class 743 Any other Preserved Fruit
- Class 744 Preserved Vegetable
- Class 745 Raspberry Jam
- Class 746 Apricot Jam
- Class 747 Any other variety- Jam
- Class 748 Any variety - Jelly
- Class 749 Any type Homemade Sauce
- Class 750 Cauliflower Pickle
- Class 751 Any other Pickle or Relish

**All classes in this section are open to
children up to 15 years**

Section 6 - Open Handcrafts

- Class 763 Hand Made Card
- Class 764 Scrapbooking Page
- Class 765 Hand Stitching - Cross Stitch
- Class 766 Felting - Needle Item
- Class 767 Felting - Toy
- Class 768 Diamond Dotz Picture - Unmounted
(Size: 30x40cm to 50.2x60.2cm)
- Class 769 Diamond Dotz Picture - Unmounted
(Size 25x25cm to 50.2x60.2cm - for
children up to 15 years only)

**All classes in this section are open to
children up to 15 years**

Section 8 - Children Preschool, 5-9 and 10 to 15 years

- Class 786 Colouring In - Preschool
- Class 787 Colouring In 5-9yr
- Class 788 Colouring In 10-15yr
- Class 789 Colouring In - Adult
- Class 790 Preschool - Decorated Biscuit
- Class 791 3 Decorated Muffins on a plate 5-9yr
- Class 792 Decorated Sprouted Head 5-9yr
- Class 793 3 Decorated Muffins on a plate 10-15yr
- Class 794 Robot from Recycled Materials 10-15yr
- Class 795 Junior Photography 10-15y - *Summertime*
- Class 796 Junior Photography 10-15y - *Creatures Big
and Small in Black&White*
- Class 797 Junior Photography 10-15y - *Black&White*
- Class 798 Junior Photography 10-15 - *Anything Yellow*

Section 9 - Skite's Corner

- Class 800 1 Tomato
- Class 801 1 Cabbage
- Class 802 1 Lettuce
- Class 803 1 Onion
- Class 804 1 Carrot
- Class 805 1 Stalk of Rhubarb
- Class 806 1 Unspecified

Waiau Town & Country Club

<https://www.waiautownandcountryclub.co.nz>

Phone: 03 2266 489 | Address: 41 King St Tuatapere

✉ waiautcc@gmail.com |  facebook.com/waiautcc



Courtesy Van Available

Club Opening Hours

Mon - Thurs 4pm till close.

Fri 3pm - close.

Sat Noon - close.

Sun 3pm - close.

New Members Always Welcome!

Just pop in or call the club for a nomination membership form.

Annual membership 2022/23 is \$50 p/p or
\$30 p/p for pensioners.

**Bistro
Hours**



Thurs: 4 - 9pm*

Fri: 3 - 9pm*

Sat: 1 - 9pm*

Sun: 3 - 9pm*

(*Bistro may close from 7:30pm onwards if not required)

**We are the perfect place for your
functions/birthdays!**

We can cater! Call us to discuss options!

03 22 66 489

**Keep an eye on our Facebook Page for more
details on upcoming events ...**

**We are on the
look out for a  chef to join
Are you ... our team**

- **Passionate about food**
- **Experienced**
- **Reliable**
- **Hard working**

We are looking for an enthusiastic, creative and qualified chef to run our bistro from Thursday to Sunday.

We cater for a variety of events including funerals, functions and group events.

The successful applicant will have previous experience managing a busy kitchen, setting menus, food pricing, ordering and monitoring supplies. Attention to detail is a must, as is demonstrated culinary expertise. We want someone with creativity and passion to help us produce innovative dishes to enhance the overall dining experience for our customers.

Does this sound like you?

If you possess all of the above then we want to hear from you! Please send a resume and cover letter to ... waiautcc@gmail.com

INDEPENDENT MIDWIFE

ISOBEL DEVERY

*Caring for women throughout
Pregnancy, Birth till six weeks
Post Natal.*

*Choices for place of birth,
Home or Winton Birthing Units
or Kew Hospital.*

*Free pregnancy tests
available on request.*

**Phone: (03) 22668822
027 2267020**

©Peece, EthicGraphics®

Sewing and Mending Services Available

Experienced machinist offering fast, reliable service with very reasonable rates.

I will mend/make anything from zip replacements to curtain making - just ask!

Free quotes and pick-up/delivery service within Tuatapere.



Contact **Deborah**

(03) 226 6783 or 021 0305 667



DAGWOOD DAGGING

*Available now to all new and existing
customers for all your crutching
requirements.*

*3 Stand or Single trailer available
7 days a week, wet or dry.*



No job too big or too small.

Competitive rates

Jeff Chambers

027 3042 241

WAIAU A&P SHOW 2023

CLASS 786: COLOURING IN - PRESCHOOL



**ENTRIES ARE TO BE AT THE NEW PAVILION BEFORE 10:30AM
ON SATURDAY 11 FEBRUARY 2023**

**PLEASE WRITE YOUR NAME ON THE BACK OF YOUR ENTRY
(DO NOT WRITE YOUR NAME ON THE FRONT!)**



HARRY'S
MACHINES
EARTHWORKS
027 304 3714




* 13 Tonne Digger * 5.5 Tonne Digger * 2.7 Tonne Digger- dry hire or operated
* Tip Truck * Bob Cat * Augers * Post Driver * Tree Saw & Hedge Trimmer

* Tree Trimming * Post Driving * Fencing * Cleaning of Wintering Sheds * Site Clearance * Cartage * Gravelling * Lane Maintenance * General Earthworks

For all enquiries and bookings please contact Lance or Alice Harris
Lance: 027 304 3714
Alice: 027 270 0363
Email: lanceharris533@gmail.com
Check us out on facebook- Harry's Machines

Shearing
magazine
Des Williams (editor)



Tel 07 839 2891 : Mob 0274 833 465
Email : shearingmag@xtra.co.nz
Member NZ Guild of Agricultural Journalists and Communicators (Inc)

LAST SIDE PUBLISHING LTD
PO Box 102, Hamilton 3240, New Zealand

**PAUL ANDERSON
BUILDER**

AVAILABLE FOR ALL YOUR
BUILDING REQUIREMENTS.

NO JOB TOO SMALL.
COMPETITIVE RATES.
REFERENCES AVAILABLE!

Mobile: 027 890 3602
thetakis@outlook.com

IN & AROUND THE COMMUNITY

Your Community = Your Archive



News from Central & Western Murihiku Southland Archive

*Suzie Best,
Digitising Archivist, Social History Researcher*

Kia ora koutou, and a huge shout-out to the Tūātapere Te WaeWae Community Board for funding the archive with some new equipment, so that we can continue to collect, copy, share and save your district's precious heritage. Some months ago not long after we first started this community project, an application was made to the local community board for some funds and we were thrilled to recently receive some of what was asked for and to be able to put this into the purchase of a desktop computer and hi-resolution portable scanner, that not only scans photos and documents, but also slides, film and negatives! These are exciting additions to our important mahi or work to preserve and protect your local history.

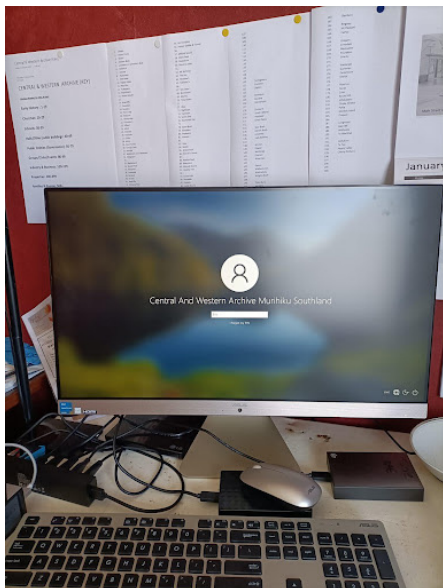
We have also taken on two new volunteer workers during the last month and both of them are not from the local district, but this just shows how much the project means to those in the community who understand the importance of saving our wider Murihiku Southland heritage. Again we would like to extend an invitation to our local communities for anyone with a few spare hours or skills, to please step up and give some volunteer time to the tasks that we have waiting to achieve. While it would be great if some of you with even limited computer skills could volunteer a bit of time, there are also tasks that don't require this. If you have any knowledge of our communities' histories or connections with others in the community, you can help us ID people in photos from the past, to help further the project.

I successfully recently obtained the rights to share a massive archive of information from DOC which relates to the Port Craig and Hump Ridge Track areas - so if anyone has got particular knowledge of or experience in these areas of the district, we would be grateful for your input and any help you can provide as well.

It would be so fabulous to have all of this fabulous information online before the opening of the Great Walk later in the year. We also have the Hump Track archives from back to original groundwork on this local track to digitise and we can share some of this background in the online portal.

I'd also like to thank the Hump Track Charitable Trust for their generous donation of storage hard-drives.

Many hands make light work they say, so how about gifting us some time to help us do it?



Above: Newly acquired computer and scanner

To get in touch with the archive, offer any help, for donations of material or to find out more, contact:

email: CentralAndWesternArchive@gmail.com or Phone: 027-211-4675 and speak to Suzie

Melanie - your local salesperson

I am proud to be serving my local area, helping people from all walks of life meet their property goals.

After some great sales so far in 2022, I have a number of buyers still looking.

If you would consider selling, give me a call!

Mel Muldrew
021 068 5262
melanie.m@toddco.nz
TODDCO.NZ
William Todd & Co Ltd, Licensed (REAA 2008)

Choose Local. Choose Melanie.
Serving Southland since 1865.

MOUNTAINS EDGE CABINS MONOWAI

Hunting, Fishing, Mountain Biking, Kayaking & Tramping Cabin Accommodation

12 Cabins
Double and Single Available
\$35.00 per person per night

Eftpos available
Full Kitchen Facilities, Showers, Toilets, Playground & the Tennis Courts right across the road!
We are 'pet friendly'

www.mountainedgecabins.com
Email: mountainedgecabins@gmail.com

75 Turbine Drive, Monowai. Ph. 03 225 8267

WESTERN ELECTRICAL
2008 LTD **Electrical Solutions**

Domestic | Industrial | Commercial

Quality Service at Competitive Prices

- New Builds, Rewiring & Alterations
- Dairy Shed, Farm & Industrial Maintenance
- Hotwater Element Replacement
- A/H Call Out Service Provided

Ph 03 225 8974 / 027 439 3787
Fax 03 225 8973

McMAHON design studio

*We are your local
Full Service Design & Print Shop*

Follow us on:



@McMahon
Design Studio

Specialising in

Logo Design & Branding, Wedding & Event Stationery & Signage
Packaging & Personalised Stationery & Gifts

**No need to travel far for your
graphic design & printing
requirements.**

*We are conveniently located
in the Wallacetown Township.
(just off Highway 99)*



*50 mins drive from
Tuatapere or Ohai*

25 mins from Otautau

*20 mins from Riverton
or Winton.*

Our Services

LOGO/EMBLEM DESIGN

including full branding packages

ADVERTISING

& SIGNAGE DESIGN

SOCIAL MEDIA GRAPHICS

& EMAIL SIGNATURES

PHOTO EDITING & CUSTOM ART,

PHOTO BOOKS, & CANVASES

WEDDING & EVENT PACKAGES

Including: INVITATIONS, STATIONERY, SIGNS, DECOR & FAVOURS,
PHOTO BOOTH ACCESSORIES, THANK-YOU CARDS & GIFTS, ETC...

ALL OFFICE STATIONERY

& CUSTOMISED PRESENTATION & PROMOTIONAL GIFTS

CERTIFICATES - PADS - CALENDARS - BOOKLETS & NEWSLETTERS

STICKERS - LABELS - VINYL DECALS

PERSONALISED STATIONERY & CARDS

CUSTOM SIGNAGE, MUGS, GLASSWARE, KEY RINGS, CLOTHING etc..

WE HAVE A GREAT RANGE OF FINISHING SERVICES INCLUDING:

DIE-CUTTING, LAMINATING, BINDING OPTIONS, FOILING, EMBOSSEING,
ETCHING & EMBELLISHMENTS TO MAKE YOUR PROJECT AMAZING!!!

Ask us about them at your consult, and we'd be happy to help you find the perfect solution.

9 Cumnock Street, Wallacetown

P: 027 242 8109

E: mcmahondesign@outlook.com

We love designing and so excited to work with you!

OPENING HOURS:

Monday - Thursday:
9.30am - 4.30pm

Friday:
10.30am - 2.30pm

Saturday & Sunday:
Closed

WAIAU VALLEY SHEARING LTD



Simon de Vries

Julie Heaps

027 840 9867

03 226 6212

EGERTON CONTRACTING

for all your cartage needs!

Bulk Tip Unit

**Tractor available with soft hands for
loading of Baleage etc**

ALSO Supply available of

Wood Chips / Sawdust

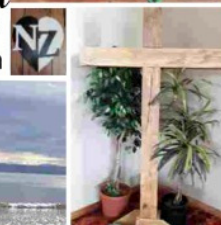
Beach but-end firewood loads

PH: EAMON 027 371 8674

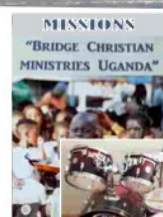
SOUTHLIFE Community CHURCH

Steve & Sharon
are Pastors

and we are an area church



We believe in
Community and
endeavour to
show this the
best we can by
the way we
care and serve!



We warmly
invite you to
come along to
one of our
services.
It would be great
to see you

Sunday Service
10am Truro St, Orepuki



SMOKING HOT SPECIALS



<p>\$17.99 Not Stocked</p> <p>Jim Beam Gold; CC Premium 7% 330ml 6pk cans</p>	<p>\$21.99 EACH</p> <p>Tui Vodka Soda (ex bourbon) 7% 250ml 12pk can range</p>	<p>\$24.99 EACH</p> <p>Cruiser 5% 12pk bottle range</p>	<p>\$24.99 EACH</p> <p>Jim Beam & Cola; CC (incl zero) CC Soda & Lime 10pk 330ml can ranges</p>	<p>\$25.99 Not Stocked</p> <p>Clean Collective 5% 250ml 12pk cans</p>	<p>\$25.99 EACH</p> <p>Major Major 10pk can range</p>
<p>\$25.99 Not Stocked</p> <p>Scapegrace; Cheeky Iced Tea 330ml 10pk can ranges</p>	<p>\$28.99 EACH</p> <p>Long White bottles Ultra cans all 10pks</p>	<p>\$24.99 Not Stocked</p> <p>Barrel 51 7% 250ml 18pk cans</p>	<p>\$13.99 Not Stocked</p> <p>Stoneleigh Marlborough; Lighter ranges</p>	<p>\$14.99 Not Stocked</p> <p>Thornbury Villa Maria Private Bin (ex PN's, Syrah, Sparkling) ranges</p>	<p>\$11.99 Not Stocked</p> <p>Taylors Estate Brown Brothers Prosecco (incl zero) ranges</p>
<p>\$28.99 EACH</p> <p>Jules Taylor range (ex reds) Pasqua 1.5lrs</p>	<p>\$25.99 EACH</p> <p>19 Crimes (ex Cali Red, Rose) range (ex reds) range or \$16.99 each</p>	<p>\$39.99 EACH</p> <p>Larios Original 1L</p>	<p>\$39.99 EACH</p> <p>Seagers (incl lime) Ivanov 1L</p>	<p>\$40.99 EACH</p> <p>Bells 1L</p>	<p>\$41.99 EACH</p> <p>Teachers 1L</p>
<p>\$45.99 EACH</p> <p>Coruba (incl Gold) 1L</p>	<p>\$46.99 EACH</p> <p>Absolut; Ballantines Beefeater 1L</p>	<p>\$49.99 EACH</p> <p>JB 1.125ml JB Devils Cut JB Black 1L</p>	<p>\$54.99 EACH</p> <p>Wild Turkey 1L</p>	<p>\$55.99 EACH</p> <p>Jameson 1L Jameson Black Barrel Olmeca Altos 700ml range</p>	<p>\$55.99 EACH</p> <p>Bombay Sapphire 1L Bombay Bramble 700ml</p>
<p>\$57.99 EACH</p> <p>Mount Gay Eclipse Jaggermeister 1L Ginato 700ml range</p>	<p>\$58.99 Not Stocked</p> <p>Haku Vodka; Roku Gin Ratu Rum range 700mls</p>	<p>\$58.99 EACH</p> <p>Malfy 700ml range</p>	<p>\$59.99 EACH</p> <p>Johnnie Walker Double Black 700ml</p>	<p>\$59.99 EACH</p> <p>Jack Daniel's 1L Woodford Reserve Gentleman Jack 700mls</p>	<p>\$66.99 Not Stocked</p> <p>Kraken Rum The Glen Grant Arboralis 700mls</p>
<p>\$13.99 Not Stocked</p> <p>BRB 6pk can range</p>	<p>\$14.99 Not Stocked</p> <p>Monteiths 6pk bottle & can ranges (ex cider)</p>	<p>\$16.99 Not Stocked</p> <p>Better Beer 6pk can range</p>	<p>\$20.99 Not Stocked</p> <p>Fortune Favours 6pk range</p>	<p>\$21.99 Not Stocked</p> <p>Kingfisher Sol 12pk bottles</p>	<p>\$23.99 Not Stocked</p> <p>Estrella Damm 12pk bottles</p>
<p>\$24.99 EACH</p> <p>Somersby 12pk bottle range</p>	<p>\$24.99 EACH</p> <p>Heineken; Heineken 0 & Light 12pk bottles</p>	<p>\$24.99 EACH</p> <p>Tui; Export Gold; Extra Low Carb; DB Draught 15pk bottles</p>	<p>\$25.99 Not Stocked</p> <p>Asahi 12pk bottles</p>	<p>\$26.99 Not Stocked</p> <p>Mac's 12pk can & bottle range (incl cider) Little Creatures Catalina Lager 12pk can</p>	<p>\$28.99 EACH</p> <p>Export 33 15pk bottles</p>
<p>\$33.99 Not Stocked</p> <p>Haagen 24pk bottles</p>	<p>\$38.99 EACH</p> <p>Lion Red; Walkato or Speights 24pk bottles</p>	<p>\$39.99 EACH</p> <p>Speights Summit Ultra Low Carb 24pk cans & bottles</p>	<p>\$43.99 EACH</p> <p>Steinlager Classic 24pk 330ml bottles</p>	<p>\$5.99 Not Stocked</p> <p>Heineken 24pk bottles</p>	

Promotion period between 1/2/2023 to 28/2/2023. While stocks last. Promotion only available at participating stores. Please contact your local store to confirm whether they are participating in the promotion and check the pricing in-store prior to purchase. Online pricing will vary.



100% **NEW ZEALAND** **thirstyliquor.co.nz** OWNED AND OPERATED

FOLLOW US ON SOCIAL MEDIA



ASK ABOUT LOYALTY CARD BENEFITS & GIFT VOUCHERS



WAI AU HEALTH TRUST – February 2023

Medical Centre:

AFTER HOURS CARE as from 1st February 2023 - Tuatapere Medical Centre will be on call every weeknight and weekend.

Some background around why and what has changed in the delivery of the After-Hours service over the last nine months. Just prior to April 2022 Otautau and Tuatapere Practices were advised that Riverton Medical would not be continuing to be a part of the afterhours service. We negotiated with Otautau and have been following this until the 31st of January 23, which was Tuatapere and Otautau covering after hours with Tuatapere doing a lion's share of the on-call hours. Commencing on 1st February Tuatapere Medical will be covering all after hours On-Call. We are offering this service to both Tuatapere Medical and Otautau Medical Centres patients. In doing this our Practitioners are committing a great deal of time and dedication to our communities. As Manager I am extremely grateful to our clinical team for taking this challenge on. Rural Communities nationwide are struggling to retain any level of afterhours care and we are doing our utmost to retain this service in our area. I am sure you appreciate this as much as I do! We have a fantastic team who always strive to deliver the best possible healthcare outcomes to you all, our valued patients.

In my role as manager of the Waiau Health Trust I am making constant decisions which focus on providing health services to the diverse needs of our community. Our Medical Centre patients and clients within our Te Whatu Ora (previously Southern DHB) contracts are very important to us and we always aim to deliver the best for you all. If you ever have any concerns or ideas regarding any of these decisions, please be in touch with me, I welcome your thoughts.

Liquid Nitrogen Clinic – 22nd February 2023

Homebased Maternity Care:

If you are pregnant or a new mum these services would be of great benefit. This care is available for you, we assist with anything for yourself or your new baby. Please contact me to discuss and ask any questions regarding the assistance we can give you as a mum of a newborn baby.

Should you have any questions or concerns I look forward to hearing from you.

Jo Sanford (Manager)

Cell: 0272356190



Waiau Health Trust
69a Orawia Road, Tuatapere
Approved Registered ACC Provider
Monday to Friday
9:00am – 4:30pm
Ph.: 2266123

Practitioner Hours
Amanda McCracken (NP) – every
weekday

Sheryl Eden (NP) –every Monday &
Tuesday

Murray Allen (GP) -On Occasions

Physiotherapist
Tuesdays & Thursdays
Phone for an appointment

Podiatrist
Visits regularly –
Phone for an appointment

Warts/Minor Skin Lesions
Liquid Nitrogen treatment available
Phone for an appointment

Homebased Maternity Care
We are offering this service
in the patient's home.
Please contact Jo Sanford
on 2266123 for enquiries.

Day Activities Programme for
the Elderly
Every Tuesday & Wednesday
Please phone for further information.

District Nursing
Available as required by referral

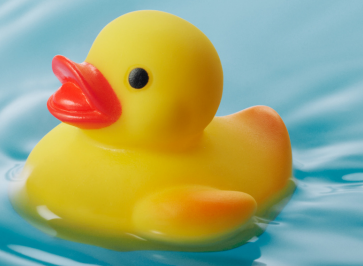


Agricultural Contractors servicing Western Southland and beyond.

BALAGE - SILAGE - GROUNDWORK - FEED TRADING
Nigel 021 226 6156 / fowlecontracting@gmail.com

THE GREAT TUATAPERE Rubber Duck Races!

SATURDAY 25 FEBRUARY 2023



Join us down at Boundary Creek, King Street Bridge for the Annual Tuatapere Toy Library Fundraiser!

10 Races + the Grand Finale Bridge to Bridge Chase!

Bet on your favourite rubber ducks in each race!

Betting Booth opens at 10:30am. Bets close 5 minutes before each race.



Bouncy Castle!

Remember your sunscreen!
Bring your own food & beverages.



Dress to Impress!
Show us your fascinator!

**Bring a chair/gazebo
& make a day of it!**

RACE 1: 11:00am



RACE 2: 11:20am



- 1 Milk 'n time
- 2 Uddlerly Fun
- 3 Gramps
- 4 Richie
- 5 Gran
- 6 John
- 7 Lyn
- 8 Alfie
- 9 Nelly
- 10 Archie



- 1 Big O
- 2 Tūi Tantram
- 3 Cargo
- 4 Duckweed
- 5 Payload
- 6 Deadweight
- 7 Mother Ducker
- 8 Release the Quackin
- 9 Spoonie Duck
- 10 Happy Endings



RACE 3: 11:40am



RACE 4: 12:00pm



- 1 Charlie
- 2 Mrs Four Square
- 3 Chicken Aioli Roll
- 4 Tui Fruit Platter
- 5 Kai Pie Ducks
- 6 Puddle Duck
- 7 Dunc the Duck
- 8 Ruffle Chicken
- 9 Duck Weaver
- 10 Do You Have a Bag?



- 1 Wiggles
- 2 Appleton's Rum
- 3 Irish Whiskey
- 4 Alastair's Whoopsie
- 5 Under the Influence
- 6 Cocktail
- 7 Lucky Number
- 8 Upside Down Cake
- 9 Bede's DB
- 10 Mrs Y



41 King Street Tuatapere
Telephone 03-226 5489 Fax 03-226 6489

RACE 5: 12:20pm

- 1 Fletch Duck
- 2 Sadie Duck
- 3 Kerry Duck
- 4 What the Duck
- 5 Duck Norris
- 6 James Pond
- 7 Quackie Chan
- 8 Fire Quacker
- 9 Quack Up
- 10 Nut Quacker

**RACE 6: 12:40pm**

- 1 Daggy
- 2 Willie
- 3 Racey
- 4 Eweno
- 5 Lambbeano
- 6 Magdag
- 7 Dodger
- 8 Swamp
- 9 Cutter
- 10 Trailer Duck

**RACE 7: 1:00pm**

- 1 Old Sparrow
- 2 Old Sparrow's Misses
- 3 Hayden the Master
- 4 Jimmy Thunder
- 5 The Nookster
- 6 Shorty Long Legs
- 7 Raydog
- 8 Boogie Woogie Doogie
- 9 Doogies Lad
- 10 Off the Rails

**RACE 8: 1:20pm**

- 1 Woody
- 2 Sparky
- 3 Beachy
- 4 Tipster
- 5 Chopper
- 6 Bluey
- 7 Crankee
- 8 Pinewood
- 9 Zoomer
- 10 Barkwood

**RACE 9: 1:40pm**

- 1 Hot Wings
- 2 Chip
- 3 Holly
- 4 Quacker 2022
- 5 Daisy
- 6 Goose
- 7 Downy
- 8 Quack Attack
- 9 Eggspresso
- 10 Plucky

**RACE 10: 2:00pm**

- 1 Moby
- 2 Sizzle
- 3 Magnum
- 4 Bruh
- 5 Jimmy
- 6 Splash
- 7 Donkey
- 8 Don't Be A
- 9 Broh-dee
- 10 Angel

**LAST RACE: GRAND FINALE : BRIDGE TO BRIDGE CHASE : 2:20pm**

The winning ducks will battle it out for
The Great Tuatapere Rubber Duck Race Champion's Cup!





Rabco Ag Ltd – 021 362 766 – admin@rabco.nz
Agricultural Contracting Specialists - Western Southland



**Full silage
& baling
service**



Cultivation – including Direct Drill & Precision Drill



Effluent – Excavators - Hedgetrimming



Ratty Presents ...

Waiau Memorial Library

*I just had the best visit.
I went to stay with Della and Angus.
We had lots of fun and I got to do lots of new
stuff. Della and Angus wrote a story about my
visit and they said I could put it in the
Western Wanderer. They didn't mention that I
accidentally ate a lot of their cheese. That's
because I did it while everyone was sleeping.
Sshhhh, don't tell them, it's a secret.*

Ratty's Adventure with The Dobsons

Ratty has had lots of fun. First he came to
Alexandra and played with Nana's toys.
Then he helped us make a treehouse in our
bush. While he was watching us a robin
landed on his head!

He also helped us build
stuff with lego.

We took him to
Invercargill
to visit the big library.
We have enjoyed having
Ratty. Thank you!

Written by Della and Angus



PLATE
METER SERVICES
TROUGH CLEANING SERVICES

PASTURE METER READING THAT'S QUICKER
AND EASIER, WITH AT THE GATE REPORTS

- Specialist in quality pasture meter reading with advanced sensor technology
- Provide 200 measurements per second or 18,500 readings over a single 500m pass
- Provides a fully integrated electronic support system
- Provides a secure web-based storage of information with easy access
- Prompt generated feed wedges for rapid decision making and seasonal comparisons
- Generate reports at the gate, supplying valuable pasture cover data and comparable results every time
- Improve heath & increase animal hydration
- Enhance production & improve water quality
- Reduce bacterial/algae contamination of trough water

**CLEAN TROUGH WATER MEANS
IMPROVED LIVESTOCK HEALTH**

Now 2 bikes
available
for pasture
metering

Brett George • P 027 351 3408
E platemeterservices@gmail.com

Alex Reid CONTRACTING

**Paddock Cultivation from
Ploughing to Sowing
Dry Hire available
Aerating
Direct Drilling
Ridging
Mulching**



Dairy Lane Maintenance

Tip Trailers • Vibrating Roller • 2 Tip Trucks

Sheep Conveyor

Drenching, Vaccination etc • 3 way draft

Large Skid Steer for calf shed cleaning, loading Muck Spreaders etc

4 Muck Spreaders • 16,000 litre Slurry Tanker
Pond Stirrer • Umbilical Slurry System



Rural Contractors
NEW ZEALAND

**PHONE ALEX
0212775308 CELL
03 2255377 HOME**



Rural Lifestyle Residential
For all your Shearing Services.

No mob too big
No mob too small
We do it all!

Contact Ricky Skipper to book in now
027 351 2620

KIA ORA, NI HAO, KAMUSTA
Western Wanderer Readers

Hauko
VALLEY PRIMARY SCHOOL

To conclude 2022 we held our end-of-year production "The Windyflaxes and The Pungapeople" at the Tuatapere RSA Hall. This was an opportunity for our Senior Students to showcase their drama, dance, and musical talents for families and friends. Congratulations to each class, hosts, cast, crew, soloists, and musicians for their phenomenal work to learn lines and bring their performances to life! HVP has got talent!

The Windyflaxes & the Pungapeople

Specialising in
Dairy Conversions
Rural Fencing
Post & Rail

H Gill Fencing,
Eastern Bush
Phone 021 225 5489
After Hours 03 225 5488
Email hamish@hgillfencing.co.nz

FCANZ
Fencing Contractors Association NZ

Shirley Whyte
Your local real estate specialist living & working in Western Southland
now also an Accredited Justice of the Peace.

for:

Friendly service, reliability, sound local knowledge
in Western Southland, Te Anau & Stewart Island
All enquires welcome - all calls answered

Harcourts
Holtwood Real Estate Ltd Licensed Agent REAA 2008

M 027 504 52200 O 03 214 4080
E shirley@harcourtsinv.co.nz
W www.harcourts.co.nz

accelerate
PHYSIOTHERAPY

office@acceleratephysio.co.nz
40 Deveron Street, Invercargill
(off street parking)
0800 291 475

Accelerate is a gentle form of exercise, effective in providing long term solutions
after an injury, especially low back pain.

We have interests in:

- > Spinal/Back & neck injuries
- > Sporting Injuries
- > Running, Cycling & Multisport
- > Men & Women's Pelvic Health
- > Acupuncture
- > Balance & Dizziness
- > Workplace Injuries / Ergonomic Onsite
- > Work Evaluations & Educations
- > Pilates

Joel Barnes
BPHYT, BEXCL

Andrea Robertson
BPHYT, PG Cert ACUP

Andrea Murray
Dip PHYT Dip M.I.

Find us on facebook

www.acceleratephysio.co.nz



HAUROKO HAPPENINGS

Hauroko Valley Primary School's prizegiving followed where we acknowledged academic excellence, consistent effort or progress, best all-round diligence, demonstration of school values/key competencies, and our cultural award. Well done to Harry who was presented with HVP's Cultural Award.

Congratulations to Sophie & Harry our dual Hauroko Valley Primary School Shield recipients of 2022 through excellence and achievement in all areas of the curriculum and school.



Thank You

Thank you to the Syd Slee Charitable Trust for supporting our 2022 swimming programme for all learners. We are extremely grateful to have your support for our students with swimming coaching, transport and pool access daily. All learners were able to progress and achieve at lessons.



Happy New Year and welcome to our first term of 2023. It is absolutely wonderful when we see our learners back!

The Blackmount Trail Ride is back with a new site and new tracks. Save the date - **Saturday 11th March** - to experience fabulous hospitality, delicious food, majestic views, and varied trails suited to everyone.

This is Hauroko Valley Primary School's major fundraiser for 2023. Your support makes a BIG difference to our little school. For further information please check out FaceBook - "Blackmount Trail Ride."

We look forward to sharing more of our learning adventures with our Western Wanderer whanau soon!



Registered **ELECTRICIAN**

For all electrical work
No job to small
A/Hours service available


Jay Brownlee
8 Carlyle Street, Tuatapere 9620
A/H 03 226 6673
Mob 027 4965 863
sparkieintuatapere@gmail.com

For all your Accounting and Tax Solutions

Ask for Janice or Trevor England

☎ 03 2266110

Aparima Accounting Ltd
57 Main Road Tuatapere


CANTERBURY CARS
4WD Specialists

For all your vehicle requirements

Cars, utes, 4WDs, vans

Finance available

Contact: Murray Dowling
027 556 2655

Visit our website
www.canterburycars4x4.co.nz



WaterForce

Irrigation Systems
Pumping & Filtration
Effluent Dispersal
Water Management

20 Winton Hedgehope Highway, Winton
03 236 9805 www.waterforce.co.nz
0800 4 FORCE (4 36723)



Liquid Foliar Spray Contracting

- ✓ Fertiliser
- ✓ Fish Fertiliser
- ✓ Gibb & NBoost
- ✓ Herbicide
- ✓ Humates
- ✓ Soil & Herbage Testing

Jon – 021 575 071



C: 0274 247 102
T: 03 225 8652

E: admin@drakeplumbing.co.nz

KIERAN DRAKE
Certifying Plumber
& Drainlayer



TUATAPERE TE WAEWAE
Community Board

Anne Horrell, Chairperson

Contact: 021 216 9808 | altonlea.horrells@xtra.co.nz

Best wishes to you all for the New Year! Thank you to those of you who added to the Christmas cheer with your colourful lights, Christmas trees and decorations; always a pleasure to see. Thank you also to the Hauroko Valley Primary team for, once again, decorating the Domain paths with the fun Christmas themed character cut-outs. A huge thank you goes to the organisers of the Christmas Parade held at the new venue, the Tuatapere Domain grounds. This was very successful thanks to the RSA members, especially John Munro, Glenys Steele, Mike Goodwin and our cheerful man in red aka Brendie! Thanks to all participants in the Parade and those who supported the event by attending. Another successful occasion was the New Year's Day Sports; big thanks to Peter Templeton and Christine and Peter Egerton and other wonderful helpers. For both events the Domain looked immaculate - the 'jewel in our crown'. Whilst people are mentioned I have to include Dave Fletcher, Gary Templeton, Chris Johnston, Dave Norman and other members of the Domain Board who have contributed to the upkeep and maintenance of this beautiful local space.

Things have been busy on the Community Board front.

Poisoned Trees. By now you will be aware that a stand of pine trees, on Southland District Council land, which is situated behind the Squash Courts, have been deliberately poisoned. This came as quite a surprise and disappointment that such an act of vandalism should occur in our town. A number of macrocarpa trees, on private land, were also poisoned. This 'unusual' news attracted the interest of journalists and news reporters and was included in both radio and television national coverage. The issue is in the capable hands of the local Police. The pine trees will be harvested, before too long, by DT Kings. It is obvious, that due to their immaturity and poisoned state, there will be little revenue. The initial purpose of the planting of the trees by the Domain Board was to generate a reasonable income for the benefit of the Tuatapere community.

Domain Reserve CCTV Cameras. These have been installed. It is a shame that, due to vandalism of property and of the grounds of the Domain, such a measure is required. Any footage will be observed and handled by the Police.

Plunket Rooms. The Tuatapere Plunket rooms are no longer required by the Plunket Society. 'Plunket' will

continue to provide a service in Tuatapere and you will soon be advised of the new venue. The 'Rooms' are available for lease. The building is well equipped with bathroom and kitchen facilities, heating and an office space. The grounds are well fenced so are safe for children. Any group or individual who has interest in the lease please contact Diane.Young@plunket.org.nz

Poisoned Dog Food. A dog that ate random dog biscuits at the Domain (near the rugby rooms) became very unwell. Jill Munro, Dog Control Officer, and Southland District Council staff communicated this event via the Facebook Community page. Please be wary of this whilst out with your dogs. If you have any concerns/ observations please contact Jill (0800732732) or contact the Police.

The Halls. The halls in our Community Board area and the custodian contact details are:
 Tuatapere RSA Hall (Wayne Edgerton 021 02511631);
 Orepuki Hall (Alistair McCracken 027 4969366);
 Clifden Hall (John Moffat 027 2087700);
 Orawia Community Centre (Debbie Chandler 0212599620)
 These are the people you contact if you wish to make a booking. Hall rental charges will be posted on each of the halls but please also make contact with the appropriate custodian. Cheaper rental costs apply for sports/church/school groups. The rental charges across the halls are similar with slight variations. We would really like to see an increase in the use of our local halls. All have good bathroom/kitchen facilities, reasonable car parking space and a good size area for mingling. The big message is that if we don't use them, we will lose them! Please make contact with me or a hall custodian if you have an idea for usage. At present you can join the 'Small Bore Rifle Shooting Club' at Tuatapere, join in yoga and gym sessions at Orepuki, join the Pickle Ball players at Clifden (similar to badminton) or join the exercise sessions at Orawia (amongst other things).

Community Housing. (Tuatapere Flats) The Community Board member contact is Jo Sanford: 027 2950429.

Lease of Senior Citizens' Rooms. The Senior Citizens' rooms, located behind the Tuatapere RSA Hall have had a renewal of lease. The lease will continue with the same terms as it has had prior, which is a renewed lease for 20 years and a peppercorn rental charge of \$1.00 per annum. It is common practice in Southland District that senior citizens lease arrangements do not involve high costs.

Tuatapere Amenities Trust. The most recent representatives to be elected as members of the Tuatapere Amenities Trust are Councillor Jaspreet Boparai (elected by Southland District Council) and Tuatapere Te Waewae Community Board Chair Anne Horrell (elected by Tuatapere Te Waewae Community Board).



Lynley McKerrow

Celebrant
 Funeral and Marriage

P: 0272 974 767
 E: nanamac60@xtra.co.nz

with care - with love - with dignity

TUATAPERE HANDYMAN SERVICES

Barry Bennett (03) 226 6730

- **Painting - Interior/Exterior**
- **Waterblasting**
- **Spider & Fly Spraying**
- **General Repair Work**
- **Lawnmowing**
- **Weed Spraying**




RAW FARM HOMEKILL

Wayne Saunders
Qualified Butcher

027 457 6350

rawfarming@yahoo.co.nz

82 Clifden Highway
Tuatapere



Cut up the way you want

- Beef
- Pork
- Sheep
- Venison
- Other game meats
- Traditional Smallgoods

Remember to ring & book in your beef! It's getting busy!

Tuatapere Te Waewae Community Board (contin ...)

Monowai Public Toilet Block. The Monowai Public Toilet Block is due for refurbishment. This will involve repairs, painting and reinstatement of a mural.

Orepuki Historic Railway Water Tower. It has been identified that the Orepuki Water Tower requires serious maintenance and fresh paint. Due to the historic nature of the structure a full assessment of the Tower's condition is to take place and then recommendations re the next steps will be communicated to the Community Board. I will keep you informed!

Community Partnership Funding. At the Community Board meeting held on the 6th December 2022 various community groups/individuals presented details relevant to a Community Partnership Funding application that they had submitted. The funds available for distribution amounted to \$20,582.00, which is for the full year-that being comprised of two funding rounds. The funds applied for amounted to \$45,856.00 Obviously, it was impossible to fund all applicants to the amount requested but the Community Board were delighted to be able to help out all applicants-to an extent. The funding applicants and the amount approved is listed below.

1. Orepuki Promotions Charitable Trust-towards costs for website development and installation.
Requested: \$550.00 **Approved: \$550.00**
2. Dr Elder Project Steering Committee-towards book publication costs.
Requested: \$24,000.00 **Approved: \$4,300.00**
3. Tuatapere Community Workers' Support Trust-towards the costs of the community Christmas lunch.
Requested: \$2,000.00 **Approved: \$1,500.00**
4. Tuatapere Senior Citizens Group-towards the purchase of new tables.
Requested: \$1,396.00 **Approved: \$1,396.00**
5. Hauroko Valley Primary School-towards the cost of installation of artificial turf (mainly for the game of hockey).
Requested: \$15,000.00 **Approved: \$4,300.00**
6. Central and Western Murihiku Southland Archive-towards establishing an online archive.
Requested: \$2,910.00 **Approved: \$1,500.00**

The total funds allocated amount to **\$13,546.00**

Policies and Bylaws coming up for Review. There are a number of policies and bylaws that Council will be reviewing concurrently in early to mid-2023. I will keep you updated on this.

Direction Setting for Annual Plan 2023/24 (Rates)

This item was on the agenda for the 6th December 2022 meeting. This item required the Community Board to review the 3rd year of the Long Term Plan (2021-2031),



CLAYTON PRIME
Registered Electrician

📞 021 951 365

✉️ southernsparx@gmail.com

For bookings contact
Rochelle 📞 021 588 257

DOMESTIC | COMMERCIAL | INDUSTRIAL



MR STEEL
TUATAPERE
PH: 027 276 6816
MALCOLM


**For all your engineering,
steel fabrication and repair needs!**

FORDE WINDERS SHEARING LTD

Available for all new and existing clients

For all your shearing and
crutching requirements

Please phone
Darin Forde 027 229 7760
Jeremy Winders 027 231 4299



**BEN MCMASTER
BUILDING**

Ph: 027 202 7955
benmcmaster@live.com

- Licensed Building Practitioner
- Sheds, renovations & new homes
- Based in Western Southland

You dream it, we'll build it

identifying any changes proposed for the 3rd year. Based on the report the rates needed to fund the Community Board would increase from \$163,037 in 2022/23 to \$172,585 in 2023/24 (GST inclusive). Using the current estimate of rating units this equates to an increase of the urban charge from \$337.55 to \$354.75 per unit; increase in the semi-urban charge from \$168.78 to \$177.37 per unit; increase in the rural charge from \$84.39 to \$88.69 per unit.

At this meeting Community Board members expressed concern at the planned increase in Community Board rates, knowing the dissatisfaction that ratepayers have shown with increases in recent years. The Community Board asked that this item on the agenda be revisited at another meeting-which was scheduled for 17th January, 2023. Community Board members requested further information and a provision of options available. I am full of praise for the efforts of the Southland District Council staff in trying to provide feasible options for our Board. The options focussed on reducing the amount rated for Grants. (Community Partnership Fund)

After considering the 5 options the Community Board unanimously chose Option 5 (recommended by Council). This involves some appropriate increases but also a considerable reduction in the rates which contribute to the Community Partnership Fund. This means no change in the Community Board rate for the 2023/24 year. It does also mean that the total grant money available to applicants is somewhat reduced; \$13,309.00. However, due to a 'new Reserve Fund' (unspent rated money \$46,769.00) the Community Board has a 'nest egg' which could be tapped into if a worthwhile cause arose. It is generally recommended that Reserve funds be used mainly for projects/unexpected costs.

Role of Boards. At our 6th December '22 meeting we were reminded of the Terms of Reference in regards to Community Boards. I, personally, feel that they are thought provoking and very appropriate.

The Role of Boards include:

- Representing and advocating for the interests of the community
- Maintaining an overview of services provided by Council within the community
- Preparing an annual submission to Council for expenditure within the community
- Promoting and monitoring community wellbeing
- Developing relationships and communicating with community organisations, groups, residents and businesses
- Advocating by making submissions and outlining community priorities
- Providing recommendations about local activities and monitoring whether local services meet community needs
- Making recommendations and providing input and advice on environmental management and spatial planning.

Now that you know what our role includes you can remind us of our responsibilities ... but you are also expected to communicate with us so that we are aware of your needs and concerns!

CHAMBERS REPAIR SERVICE

45 Half Mile Road, Tuatapere

Ph: (03) 226 6654

- 24 hour Self Service Fuel
- Full Mechanical Workshop
- NZ Post Centre
- Agents for Wide Span Garage



Bring your lawnmower in for a service now & beat the rush

**MTA Gift Vouchers
Available**



Tui Base Camp



Open from 8:30am every day!

Kitchen open until at least 7.30pm

**COME IN &
CHECK OUT OUR SPECIALS**

Ask for one of our Coffee Cards with your next
Amore Coffee (Dine in or T/A)

Pre-order your morning tea and lunches by
calling **(03) 226 6250** and we can have it ready
for you to pick up when it suits you.

Don't forget we now have a mini-van!

Contact us to organise a night out at
Tui Base Camp (pick-up and drop-off).
Enquires to **James 027 837 3521**

**For all of your dine in and takeaway
requirements including:**

In-house roasted Amore Coffee
In-house made pies, sausage rolls,
cheese rolls
Range of breakfast options
Packed lunches
Catering

Phone: (03) 226 6250

www.tuibasecamp.co.nz



**Keep an eye on our
Facebook Page
for our latest updates!**



Ratty Says ...

Waiau Memorial Library



Remember a couple of months ago when I got into trouble for not having a backup story and leaving everything to the last minute? Well, I promised to do better.

I even made a New Year's Resolution to have my stories ready by the 20th AND have a backup. Want to know how that went? Today is 22nd January.

I finally got my leg all fixed up. WOOHOO!!! I've got Christmas stitches, they're red and green. How cool is that? I was told it might be best if I don't go jumping off trains anytime soon, or ever.

Did you know that the A & P Show is coming up? I had so much fun making things for the last show that I'm going to do it again. I think I'll make something different because I'm adventurous like that. I found some felt. At least, I think it's felt. It's kind of lumpy with bits of wool falling off and it's a bit see through, actually it's got holes, big ones. I'm going to see if I can make it into something. I've also got my colouring pencils ready for the colouring in competition. I wonder if I'll have time to make anything else? Probably not, I'm guessing the show doesn't take late entries.

I've discovered a new food. Boysenberries!!!



I tried to help take off the bird netting. I got all tangled up and it wouldn't let me go. How Rude!

When I finally escaped I went to pick some berries but when I saw everyone's hands had purple stains on them I decided my talents as a Supervisor would be more helpful. I knew that if I got Boysenberry stains on me, not only would I end up in the washing machine, I would also find myself in a bucket being soaked for a week. Ratty is happy to try new things but soaking in a bucket for a week is not one of them!



The Adventures of Charlton



From the top of the world on to the lowest place on earth that I have ever been to.

They call it the Dead Sea. Well, it is not actually dead, but very few creatures could actually live in it. This sea, or rather a lake as I saw it, has very very salty water, yes, it is a lake that is made up entirely of salty water.

It is almost impossible to swim in this lake because you keep on turning over on your back, as the salty water supports your natural buoyancy. If you actually put your head under, it will sting your eyes so bad, that you cannot see anything for a while. You know, I know this because my owner put this to the test, and he tells me, it is true... don't put your head under in the Dead Sea, it will sting your eyes and nose very badly! I think he learned out of this experience that it is best to actually believe what they put up on the signs to warn tourists like us. I did very well to just sit on a chair watching the sun set, not going too near the salty Dead Sea.

From there we travelled to Bethlehem, to the place where Baby Jesus is said to have been born. I thought that was in a stable, but no, we found his said birthplace deep down under an old church that needed its roof renovated. We had to climb down a lot of stairs into a dark cellar and there were many other people, some singing, some praying. It was a strange place I must say. Nothing like the story I have heard about the birthplace of Jesus. From there we went to Jerusalem to the place where it is said that Jesus of Nazareth's life ended. That was said to be on a hilltop outside of town, but now we found it deep under the ground and in the middle of town. Again, there were many other people visiting the site, so many that we hardly could move on our own, being pushed forward with the crowd. It was not a very nice atmosphere there, it was hot in Jerusalem, and we were glad to drive back to our hosts near Tel Aviv, the capital city of Israel, in an airconditioned bus.

Before we got to Israel on our trip to the Middle East, we visited an interesting place in the Jordanian desert called Wadi Rum. With 720 km² it is the largest in Jordan. A Wadi is mostly a dry riverbed except



during the rainy season and that often forms an oasis. The film "Lawrence of Arabia" was filmed there in the 1960s, based on the book "Seven Pillars of Wisdom" that Mr Lawrence wrote. He served with rebel forces during the successful Arab Revolt against the Ottoman Turks in 1916-1918. More about our trip to the Middle East next time ☺



Hens for Sale \$10ea

18 month old Brown Shavers
Ex-commercial layers from
Te Waewae Eggs, Te Waewae Bay
True Southland Free-range

Ph Rob 03 226 6805 or 022 044 2086



027 252 7933

- ☒ Renovations
- ☒ Extensions
- ☒ New Builds
- ☒ Sheds/Farm buildings
- ☒ Decks
- ☒ Pre-purchase house
- ☒ Inspections

Call us for any building requirements

Ph 027 252 7933 email: aaroncbltd@gmail.com



ANDERSON DRAINAGE SERVICES

Keeping Southland Flowing



- ☒ Tile Cleaning
- ☒ Culvert Cleaning
- ☒ Septic Tank Blockages
- ☒ Domestic Blockages
- ☒ Rural Drain Blockages

Fraser Anderson
021 162 0210
fraseranderson1@gmail.com
Forest Hill, Southland
Follow us on Facebook

Call us today!

WANTED TO BUY

Possum Fur, Hard deer,
Antler, Deer Velvet.

Phone Leith 027 496 3721

WAIAU A&P SHOW 2023

CLASS 789: COLOURING IN - ADULT (16 YEARS +)



**ENTRIES ARE TO BE AT THE NEW PAVILION BEFORE 10:30AM
ON SATURDAY 11 FEBRUARY 2023**

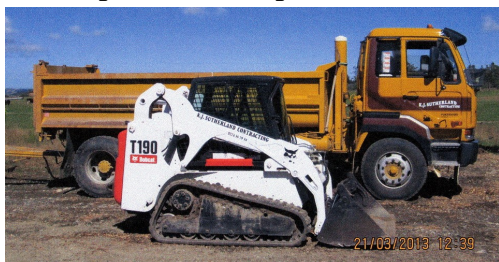
**PLEASE WRITE YOUR NAME ON THE BACK OF YOUR ENTRY
(DO NOT WRITE YOUR NAME ON THE FRONT!)**

K.J. Sutherland Contracting Bobcat T190

With attachments: Landscape Rake,
Augers and Trencher

Suitable for all landscaping, shed and yard
maintenance

Muck-spreader and tip trailer available



PHONE KEVIN
027 367 934 / (03) 225 5716



MILLARS

- PLUMBING
- GAS FITTING
- DRAINLAYING
- LICENSED BUILDER

Master Plumbers
Partnership Excellence

f Ph 027 4340 705 or 03 225 8567



We specialise in:

Resource consents
Farm environmental plans
Policy advice
DOC concessions
Landscape plans & assessment

We take care of the paperwork,
so you can do what you do best!

Sonya: 027 5050 077
Rebecca: 027 4246 129
www.slwp.co.nz
Locally owned & operated

For Landscaping, Land Maintenance, Gravel Supply & Cartage

**GRADES OF CRUSED & SCREENED GRAVELS,
ALKATHENE LAYING, ROOTRAKING,
FARM TRACKS, DAIRYLANES**



**ELEVATOR SCRAPER,
BOBCAT & ATTACHMENTS,
LANDSCAPING, TRENCHING AUGERS**

Supplies of Gravel Ex Waiau River

River Run Screened Grades Concrete Gravel Pea Gravel
Rejects for soak holes Crushed - AP30 & AP65
Peebles for Sheep and Cattle yards and calf sheds
Fines suitable for cow lane capping

K J SUTHERLAND
GRAVELLING &
AGRICULTURAL CONTRACTOR
2475 OHAI-CLIFTON H/WAY
ORAWIA RD2 OTAUTAU 9682

Ph 0274 367 934



Ice cream & Milkshake Parlour

16 Orawia Road
8am - 4:30pm every day

2023 - a whole new year for us all.

Are you planning a small gathering,
a birthday party, a celebration?

Do you need a nice space to meet in?

Give us a call at **THE WELL** - 027 247 2524

The setting is intimate, warm and welcoming,
The food is excellent and to your specifications

A child's birthday party, a small musical
evening, a meeting of minds and ideas,
A celebration or even a small wedding

We can cater, we have the facilities,

We have your interests at heart.

But we are still **THE WELL** in the daytime too
A Sunny, Open, and Happy Place.

Open **8am to 4.30pm - Seven days** a week
Delicious all day breakfasts, waffles, toasted
or fresh sandwiches (your choice)

Really delicious food made in house.

Try a Pie or Sausage Roll - you won't get better

Our range of ICE CREAMS, and MILKSHAKES
will satisfy

Underground Coffee is the BEST of the BEST

THE WELL - TUATAPERE

Home of the Humpridge and where summer days
are longer than anywhere else in the world!

For all your fencing requirements

WESTERN FENCING

SHEEP | DAIRY | DEER



Call BEVAN 0277 413 213

Tuatapere Freight

LOCALLY OWNED & OPERATED

RUNS MONDAY TO FRIDAY
WEEKENDS BY ARRANGEMENT

Phone Brandon
027 436 4360



COMMUNITY



Myles Greber

Tuatapere Te Waewae Community Board Meeting

17th January 2023, Waiau Town & Country Club at 3:30pm. All members in attendance with a number of supporting Council Staff.

Direction Setting Report

The main item on the agenda for this meeting was to finalise the Direction Setting Report for the Annual Plan 2023/2024.

Five options were prepared by Council Staff to reduce the proposed rate increase for the next rating period. The reduction was to be funded by reducing the amount allocated to Community Grants or by funding a portion of the Community Grants from reserves.

Full details of the five options can be found in the agenda of the meeting at southland.infocouncil.biz.

The Community Board chose the fifth option, which was also recommended by Council staff. This option results in no increase in Community Board rates for the next rating period by reducing the funds allocated to Community Grants with no funding from reserves. However, the Community Board does have additional unspent reserves (from projects not carried out due to COVID-19) that could be put toward Community funding if a specific need arose.

This means that the Community Partnership Fund will be significantly reduced for 2023/2024 to a little over \$13,000. The criteria for grants will likely be tightened ensuring grants are awarded to groups/causes that are more aligned with benefiting the Community.

As a result, the Community Board component of Council Rates, for the next rating period, should not change or change very little from \$337.55 (full rate unit). Note: this is only a small component of a typical rate notice. The proposed average increase to rates from Council, as set out in the Long Term Plan, was around 6% for the 2023/2024 rating period. But as we are all aware, our Community pays well above this average. It will be some time before Council will have the final details of rates for the next rating period. Council staff indicated that they are trying to 'trim' operational costs wherever possible.

Community Halls

Costs associated with Community Halls were discussed. These costs make up a significant portion of the Community Board rates as the halls cost much

more to maintain than the income they bring in. The table below summarises **income vs cost over the last 5 years**.

Hall Income vs Costs (5 years)

	Income	Operating Costs	Capital Costs
Clifden Hall	\$0.00	\$36,062.42	\$0.00
Orawia Hall	\$8,219.83	\$54,399.37	\$0.00
Orepuki Hall	\$4,659.28	\$37,841.28	\$40,876.23
Tuatapere (RSA) Hall	\$3,206.63	\$73,341.71	\$0.00

The limited use of the Clifden Hall was highlighted and consideration is being given to selling this hall once community input has been reviewed. Note: if this hall is sold, those in the area would contribute to the next closest hall, reducing the rating contribution for those halls by a small amount. The funds from the sale could be used to maintain other halls, further reducing costs for a period of time.

The rate contribution paid toward the cost of a hall, typically the one closest to the ratepayer, are outlined in the table below:

Hall Rates

	Current	Proposed	Change
Clifden Hall Rate	\$96.52	\$104.46	+\$7.94
Orawia Hall Rate	\$95.44	\$85.34	-\$10.10
Orepuki Hall Rate	\$100.09	\$87.81	-\$12.28
Tuatapere (RSA) Rate	\$50.50	\$47.36	-\$3.14

Next Meeting

The next meeting will be held on the 7th February, 2023.

Additional Thoughts & Info

One of the Community Board members raised a question that had been asked by a member of the community in relation to whether Forestry pays rates. Council Staff indicated that yes, Forestry pays significant rates and they would provide specific detail at a later time.

It concerns me that there is so much misinformation in the community surrounding Forestry. When Forestry was one of the main income generating industries in Tuatapere, Tuatapere had almost three times the population it does today and was a much more vibrant community. However, both Tuatapere and Forestry have changed considerably since that time.

Forestry, in fact, pays some of the highest rates of the non-residential sectors (except for Mining) in proportion to land value. This includes roading rates. The Council's Long Term Plan provides a breakdown and examples of rates for various sectors.

Based on these examples a comparison is provided below:

Roading Rates

Sector	Rate/Capital Value	Total Revenue 2021/2022
Mining	\$0.0211	\$298,817
Forestry	\$0.0066	\$917,203
Commercial	\$0.0014	\$487,777
Industrial	\$0.0014	\$490,051
Diary	\$0.0010	\$6,064,349
Farming (non-dairy)	\$0.0006	\$5,904,996
Residential	\$0.0006	\$1,340,575

Total Rates

Sector	Capital Value	Total Rates 2021/2022	Rates/Capital Value
Mining	\$3,930,000	\$86,476	0.0220
Residential (Otautau)	\$230,000	\$2,888	0.0126
Industrial	\$400,000	\$2,994	0.0075
Forestry	\$580,000	\$4,176	0.0072
Commercial	\$730,000	\$4,028	0.0055
Dairy	\$12,700,000	\$20,909	0.0016
Farming (non-dairy)	\$5,360,000	\$7,842	0.0015

TUATAPERE OUTDOORS & HARDWARE

For all your

Gardening tools, lawn care, garden hoses, insect and disease sprays, potting and compost.

We have those building requirements for that weekend job with a good selection of silicone, nails, screws and bolts.

New fishing rods and reels, fishing lures, good selection of soft bait, fishing nets, flounder and eel nets.



Good selection of giftware.

Come in, check out what we have.

Contact:

Judy **027 225 8192**

Paul **027 890 3602**

Shop **(03) 226 6363**

PLEASE HAVE YOUR ARTICLES, NOTICES, OR
UPDATED ADVERTS FOR THE
WESTERN WANDERER SENT IN BY

20th of FEBRUARY
(for MARCH's Issue)

A recent Council meeting addressed many of the misconceptions in the community surrounding Forestry e.g. environmental issues, fire risk, land degradation - all were found to be incorrect. I'm hoping to put together some details around this so the community is a little more aware of the benefits that increased Forestry can bring to the province and to dispel some of the misinformation.

You can email me at:

info@onnaturesedge.co.nz to ask questions or raise issues related to this article.

BARRETT *Ag* LTD

FULL SILAGE AND BALEAGE SERVICE



ALL CULTIVATION
INCLUDING DIRECT DRILL
AND STRIP TILLING - PRECISION PLANTING



EXCAVATION
20 TONNE DIGGER/ GRADER
D85 BULLDOZER/ ROLLER
TIP TRUCKS AND TRAILERS



Barrett Ag Ltd
Ph: Kahu- 027 5183 448
E: barrettagltd@gmail.com
FB: Barrett Ag





Tim and Superior go the extra mile

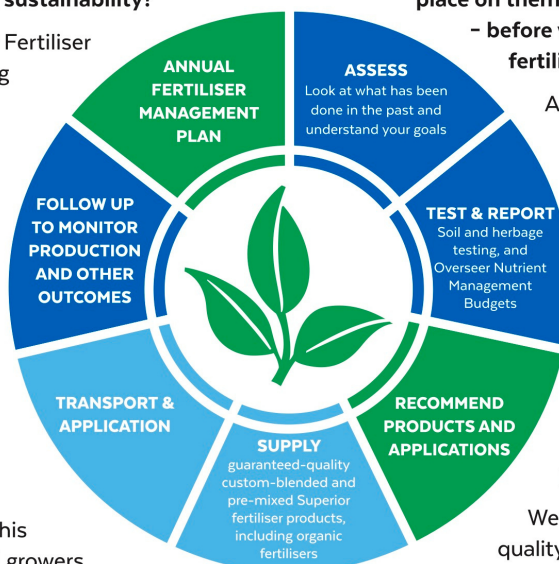
Are you frustrated with the lack of service from your local fertiliser consultant, peddling the same advice year after year regardless of your production outcomes, environment and sustainability?

Give **Tim Adcock** of Superior Fertiliser Specialists a call. He will bring a whole new meaning to service and client/advisor relationships.

Tim is a key member of the highly skilled Superior team totally committed to helping you develop healthier, more productive soils and plants.

We form a specialist fertiliser company that provides high quality advice and products at competitive prices. We have been doing this for South Island farmers and growers for just on 20 years.

Superior promotes a total soil care package. First, we get to understand the make-up, nutrient status and health of your soils, the demands you are going to place on them, and your production goals – before we apply one kilogram of fertiliser.



A comprehensive regime of vigorous soil tests will be undertaken and the results will provide the basis of a Superior Fertiliser Management Plan customised for your unique situation. This will complement your farm's Environmental Plan and provide the blueprint for an ongoing annual fertiliser programme.

We then supply guaranteed-quality solid fertiliser for your pasture and crops, monitor production and other outcomes, and update your Plans as required.

It's free to talk so don't hesitate to give Tim a call.
Phone 021 418 224



Tim Adcock
Fertiliser Advisor
Otago/Southland
021 418 224
tim@superior.net.nz

 FERTILISER SPECIALISTS
SUPERIOR
www.superior.net.nz

TUATAPERE SERVICE STATION

20 ORAWIA ROAD
PHONE: 03 2266475

HYDRAULIC FITTINGS & HOSES

We stock a good range of crimp on hydraulic fittings for agriculture hoses, we can also repair or make up new hoses.

FOR ALL YOUR MECHANICAL NEEDS

Car & 4WD WOF's
Trailer, Caravan & Motor bike WOF's
Servicing all vehicles
Light Engineering
New Tyres
Electrical Work
Scanning of most vehicles

HARDWARE IN STOCK

METRIC BOLTS & NUTS
IMPERIAL BOLTS & NUTS
GUTTER BOLTS
DYNA BOLT
COACH BOLTS
TEK SCREWS
WOOD SCREWS
SELF TAPPING SCREWS
HINGES, BRACKETS, CATCHES



NZ TRANSPORT AGENCY
WAKA KOTAHI

WE CAN PROCESS ALL YOUR

CHANGE OF OWNERSHIPS
VEHICLE EXEMPTIONS
CANCELATION OF REGISTRATION
CHANGE OF HUBOMETER
REGISTRATIONS
ROAD USER CHARGES

HOURS

Monday to Friday 8.00am-5.00pm