



WESTERN Wanderer

Tuatapere | Clifden | Orawia | Blackmount | Monowai | Colac Bay | Orepuki

Cover Photo: Orepuki Beach Ride Used with Permission from: Orepuki Horse Treks

Issue 250

At a glance ... what events are on this month?

NOVEMBER 2022

MONDAY	TUESDAY	WEDNESDAY	THURSDAY	FRIDAY	SATURDAY	SUNDAY
	1	2	3	4 Pet Day 2022 Waiau Area School Pet Day 2022 Hauroko Valley Primary School	5 Tuatapere Highland Piping & Dancing Society Dinner & Dance - 65 Years! RSA Hall 7pm til late! Tuatapere Community Market The Shed at the Well 10-1pm *GUY FAWKES Starts at dark WTCC	6
7	8	9	10 SPOT Quiz Night Tuatapere Golf Club 7:30pm	11 Community Strength & Balance Class Orepuki Community Hall, 10-11am	12 R18 Dessert Evening - 7pm WTCC	13 Western Southland Gun Club Hunting & Fishing 100 Target Shoot 9am Pukemaori Grounds
14	15	16 Tuatapere Districts Promotions Inc Meeting WTCC 7:30pm	17	18	19 Second Hand PopUp Shop MARKET DAY 10-2pm TPC Main Rd	20 Deadline for WW NOV Issue content
21	22	23	24	25	26 Tuatapere Highland Piping and Dancing Society St Andrews Celebration WTCC - 6:30pm	27
28	29	30	1	2	3	4
Coming up ...	Waiau Star Rugby Club AGM Monday 5 December Rugby Clubrooms (Tuatapere Domain) 7:30pm	Western Southland Gun Club 11th December Xmas Hamper 75 Sporting Targets 10am Pukemaori Grounds	Tuatapere Annual Christmas Parade 23 December 6:30pm	Christmas Dinner Tui Base Camp 25 December 12 Noon	Western Southland Gun Club 1st January 2023 - New Years Day Shoot 80 Targets 10am Pukemaori Grounds	Waiau A&P Show 11 February 2023 Tuatapere Domain 

Special thanks to



SEE INSIDE FOR MORE DETAILS!
Want your event here? Let us know at
yourwesternwanderer@gmail.com

COMMUNITY NOTICES & EVENTS

HANDY PHONE NUMBERS

EMERGENCY

POLICE /FIRE/AMBULANCE: **111**



MEDICAL CENTRE: (03) 2266 123

TUATAPERE POLICE STATION:
(03) 2269 020

TUATAPERE COMMUNITY WORKER:
027 757 5983

HAUROKO VALLEY SCHOOL OFFICE:
(03) 2266 753

WAI AU AREA SCHOOL OFFICE:
(03) 2266 285

TUATAPERE CEMETERY TRUST:
(03) 2266 065

CHAMBERS SERVICE STATION:
(03) 2266 654

TUATAPERE SERVICE STATION:
(03) 2266 475

TUATAPERE FOUR SQUARE:
(03) 2266 898

TUATAPERE OUTDOORS & HARDWARE:
(03) 2266 363

Quiz night

WEDNESDAY 9TH NOVEMBER 2022

VENUE- TUATAPERE GOLF CLUB

TIME - 7.30 PM

\$5 PER PERSON, UP TO 6 IN A TEAM

S.P.O.T ARE RAISING MONEY SO THAT WE ARE ABLE TO HELP OUR COMMUNITY THAT ARE IN NEED FOR HELP WITH MENTAL HEALTH SERVICES.

WE WILL HAVE AUCTIONS ON THE NIGHT THAT ALSO INCLUDE AN AMAZING NIGHT AWAY FOR UP TO 10 PEOPLE AT A MYSTERY LOCATION IN WESTERN SOUTHLAND



Prizes for the raffle table would be appreciated

Any questions please contact
Loretta Tilby 0274629527
or Kaylene Bennett 0274327156

TUATAPERE HIGHLAND PIPING & DANCING SOCIETY

Invites you to celebrate



65 YEARS
of competitions



DINNER & DANCE

Tuatapere RSA Hall
November 5th, 7pm til late

Tickets \$50pp

The Yardmen performing live music
Courtesy car available
Cash Bar

For tickets contact Lisa 0273614474
or lisa.mccracken.92@gmail.com

save the date

SOUTHLAND DISTRICT COUNCIL HOLIDAY PROGRAMME

presented by Active Southland

FUN HOLIDAY PROGRAMME

10AM-3PM

TAMARIKI AGED

5-12 YEARS

FREE BUSES WILL BE RUN
TO SUPPORT TAMARIKI FROM
NEIGHBOURING COMMUNITIES
TO ATTEND THE HOLIDAY PROGRAMME

More information to come

contact: jenna@activesouthland.co.nz



THU 19TH JAN
FRI 20TH JAN
MON 23RD JAN
TUE 24TH JAN
THU 26TH JAN
FRI 27TH JAN
MON 30TH JAN
TUE 31ST JAN

WYNDHAM
TOKANUI
TE ANAU
LUMSDEN
RAKIURA
RIVERTON
WINTON
OTAUTAU

Tuatapere Community Pool

Access Keys:

Ian Laurenson 022 608 4764
Suzanne Norman 027 422 1521

Water Quality or Maintenance Concerns:

Trevor 027 203 7854

All other queries:

President: Minessa 027 311 2112

Prices for Season Pass:

Family (immediate family in one house) \$180

Buddy key (2 x unrelated individuals) \$180

Senior Citizens Buddy Ticket \$150

Access Tag \$15

Or

One week family key hire \$30 **plus**
\$15 access tag (refundable on return)

2 hour hire \$5/adult + \$3/child **plus**
\$15 access tag (refundable on return)

COMMUNITY NOTICES & EVENTS

PLEASE HAVE YOUR ARTICLES, NOTICES, OR
UPDATED ADVERTS FOR THE
WESTERN WANDERER SENT IN BY

20th of NOVEMBER
(for the December Issue)

No WESTERN WANDERER in January

Tuatapere Golf
Club

TWILIGHT

GOLF - Ambrose

6.30pm Tee Off

**\$5 P/P -
Food & bar
opened
afterwards**

Starting
Thursday
27th October

**Every
Thursday**

Max's Lawn Mowing Services

Availability

Weekdays 3pm til dark
Weekends 9am til dark

Prices depend on size/time
spent doing the lawn

Contact Loretta (my mum)

027 462 9527

For the Tuatapere area



[https://ehive.com/collections/202139/
central-western-murihiku-southland-
archive](https://ehive.com/collections/202139/central-western-murihiku-southland-archive)

Central & Western Archive

*If you have photos or records of the district you can
contribute for digitisation/sharing,
please contact us on the following email:*

CentralAndWesternArchive@gmail.com
or mobile phone: 027 211 4675



OREPUKI COMMUNITY PROMOTIONS
GROUP PRESENTS



COMMUNITY STRENGTH & BALANCE CLASS

A FALLS PREVENTION CLASS
FOR THOSE LOOKING TO
IMPROVE THEIR BALANCE AND
MOBILITY, INCLUDING LOW
IMPACT STRENGTH AND
BALANCE EXERCISES.

WHERE: OREPUKI COMMUNITY HALL

WHEN: 10am - 11am
EVERY SECOND FRIDAY OF THE MONTH

COST: GOLD COIN

ENJOY A CHAT & A HOT CUPPA AFTER CLASS

CONTACT/LEADER: KATHRYN MENPES
EMAIL: OREPUKIPROMOTIONS@GMAIL.COM
PHONE: 021 0811 6603

**LIVE STRONGER
FOR LONGER**

PREVENT FALLS & FRACTURES



TUATAPERE AMBULANCE

Did YOU Know?

The Tuatapere Ambulance is a funded service by the Tuatapere Lions Club, for the residents of Tuatapere & Districts.

Should you receive an account for this service from St John, please forward it immediately to:

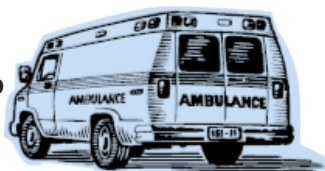
**The Treasurer
Tuatapere Lions Club
PO Box 47**

Tuatapere

Sometimes we experience difficulty in receiving the invoices for YOUR trip - so PLEASE do forward them on to us.

Thank you!

**Tuatapere Lions Club Charitable Trust
Ambulance Committee**



COMMUNITY NOTICEBOARD

NO JANUARY ISSUE

An important reminder that there is **no Western Wanderer Issue delivered in January** - so if you have an event or a notice for something happening during January PLEASE let us know by November 20th so that we can include it in the December Issue for you.

TUATAPERE RSA MEMORIAL BURSARY APPLICATIONS

Applications for the above 2023 bursary are now open. To obtain an application, please contact **John Munro** on 027 412 2925 or email him at locatorbeacons@gmail.com for an application.

Applications close 30 March 2023 and the successful applicant will be notified shortly after.

ST. ANDREWS CELEBRATION

The Tuatapere Highland Piping and Dancing Society is celebrating St Andrews on the 26th of November at the Waiau Town and Country Club at 6:30pm.

Attended by Waimatuku Pipe Band.

We will address the Haggis.

WE NEED MORE PLAYERS!

Tuatapere Ladies Outdoor Bowls - we need more players! Is that you?

Monday - Practise Day - 1pm

Wednesday - Game Day - Times confirmed each week

Contact Pam Cooper 027 249 0777 or
Olive Bennett 03) 2266 477

TUATAPERE COMMUNITY MARKET

First Saturday of the month. 10am - 1pm
In the Shed at The Well.

Please text 027 297 4767 to book a \$5 table

WESTERN SOUTHLAND HEALTH SHUTTLE

The Western Southland Health Shuttle Service travels from Otautau, Ohai, Nightcaps, Tuatapere, Riverton - covering all of Western Southland. We also connect with the Invercargill-Dunedin shuttle.

The Western Southland Health Shuttle operates Monday - Friday (excluding Public Holidays).

Bookings are required by 3pm the day prior to transport.

Ph: 0800 103 046 to book.

Please book as soon as you receive your appointment.

TUATAPERE VOLUNTEER FIRE BRIGADE

We're on the lookout for members to join this rewarding organization. We are looking for persons who are, ideally, available throughout the day.

If you think that you would like to try this (sometimes lifelong) commitment, then please feel free to come and try it!

We train on Tuesday nights at 7:30pm during daylight saving and 7pm through the winter months.

We look forward to meeting with you.



COMMUNITY NOTICEBOARD

WANTED BY THE POP UP SHOP

Linen - Children's Toys - Household Items
- Jigsaws - Children's Shoes -

Can you help with any of the above for our customers?

Many, many thanks for your support of the shop.

Contact Carol Diack 021 110 1835

POP UP SHOP

Quality second hand goods
Affordable prices

OPEN

Friday 2pm to 4pm

Saturday 10am to 2pm

Tuatapere Presbyterian Church Hall, Main Road,
Tuatapere. Enjoy a cuppa and a chat while there.

TOYS, LINEN, HOUSEHOLD ITEMS, BOOKS,
SHOES, CLOTHING AND MORE.

CHECK OUT MY WEEKLY FACEBOOK POST.

Donations of items always gratefully received.
Thank you for helping us help the community.
Drop off at the church or for other options
contact me. Carol Diack 021 110 1835

MARKET DAY

Stalls of craft and other goods

Every 3rd Saturday of the month.
Next market day 19th of November.
From 10am to 2pm

Held at Tuatapere Presbyterian Church, Main Road,
Tuatapere.

To book a table or any queries please phone or text
Carol Diack 021 110 1835

Get your car washed, dried and windows cleaned
Price arranged on request!

Contact: Rex Hibbs Flat 1/26 Orawia Rd, Tuatapere

NEED A JP?



The following Justices
are available
by appointment:

Tuatapere

Keri Potter 027 526 3137

Te Waewae Bay

Shirley Whyte 027 504 5220

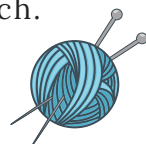
Blackmount

Nicky Baker 0276435880

WESTERN SOUTHLAND WOOLCRAFT GROUP



Spinning, Felt, Weaving, Knitting,
Crochet. Other crafts welcome!
1st & 3rd Wednesday of the month.
10am - 3pm. \$3. BYO Lunch.
Scout Den, Erskine Street.
For details please contact:
Helen Todd 022 103 9327



TUATAPERE & DISTRICTS LIONS CLUB PROJECT



SUPER DIRT

Super dirt bags are now
weighed so more in each bag!
\$8 per bag - ready for your garden!

Super dirt can be collected from:
Cracks Yard, Grove Burn Road,
in the mornings Monday to Friday.
Weekends by arrangement.

Delivery by arrangement - (but not
guaranteed)

Phone Trevor (03) 225 5864 or
Stephen (03) 226 6817



TUATAPERE COMMUNITY WORKER

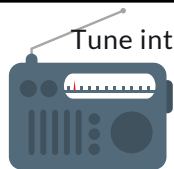
Room 5 Medical Centre
69A Orawia Road

Monday - Thursday 10am to 3pm

Keri Potter 027 757 5983

Email: tcworker@xtra.co.nz





Tune into Tuatapere's very own Radio Station

88.2 FM - Tui FM!

Hits of the 80's & 90's and
today's current music!

COMMUNITY NOTICEBOARD

CALLING ALL LOCAL COMMUNITY GROUPS / SPORTING TEAMS/CODES ETC

It's free to advertise your local group, sporting team/code in the Western Wanderer! If you want to share the results of a game and/or tournament or celebrate the achievements of a team member or player - we can print that too! Email yourwesternwanderer@gmail.com by the 20th of the month prior & we'll also add any event notices to the Community Noticeboard for the next issue!

INDOOR BOWLS

We have practice nights on Mondays 7.30pm with competition games Thursdays 7.30pm at the Waiau Town & Country Club.

Young players are welcome to join with training/coaching provided.

If you'd like to join or know any who is keen ... please email jessejculbertson@icloud.com

CHESS!



Who is keen for a game or to learn?

Sundays 3-5pm at Waiau Town & Country Club

Gold coin donation appreciated to help pay for the sets. See you Sundays, just turn up, no need to register or anything!

TUATAPERE PRESBYTERIAN CHURCH

Has it been a trying week? Is life a bit of a struggle? Have things not quite gone your way?

Need somewhere to reflect and rest your mind?

Need to 'take a breath'?

How about joining with us for a time of quiet fellowship on **Sundays at 10.30 am** at the **Tuatapere Presbyterian Church, Main Street, Tuatapere**

A time to be, to reflect and refresh. There is a children's time where they can be in their own space too. All are welcome to join us.

Make new friendships, create new moments.

Need to know more? Phone or message

6 **Lynley on 027 297 4767**

SALVATION ARMY FAMILY STORE TRUCK

The Salvation Army Family Store Truck will come out and collect large amounts of your pre-loved furniture & other household items. This service is free. Please call the store to organise your visit on **03 214 5380**



COUNTRY CORNER CRAFTS

Come in and browse and see what we have to offer. Hats, scarves, children's knitwear, cards, jewellery, woodware, sewing, jams, pickles, sauces, etc.

Tuatapere souvenirs "On Natures Edge" logo are always available.

Is anyone interested in joining to sell their crafts? You are more than welcome to contact us.

Want to volunteer your time & work in the Craft Centre - let us know! It's a great way to meet people! If you wish to view the shop and it is closed, please ring the ladies below to open it for you.

Louise Greber (03) 668 6001 or

Lyla Sherriff (03) 226 6187

TUATAPERE ENVELOPES

Envelopes printed with the "Tuatapere on Natures Edge" Logo can be purchased at Country Corner Craft Shop 1A Orawia Road. **Cost \$4.00 per 10**



SOUTHLAND COMMUNITY LAW CENTRE

Free legal information and advice for the community of Southland. 2nd Floor, Cue Building, 33 Don Street, Invercargill. Phone **(03) 214 3180**

Freephone: 0800 550 800
(outside Invercargill city only)



COMMUNITY NOTICEBOARD

TUATAPERE PLAYGROUP

Tuatapere Playgroup welcomes all 0-5 year olds & their parents/caregivers to come join the fun!



You'll find us at 23B Orawia Road, Tuatapere

Friday mornings
from 9am to 12pm.

Bring a packed morning tea and drink bottle.

We provide a warm, friendly atmosphere for children to form bonds and learn alongside each other and a place for parents to connect.

For more info message our Facebook page or contact Gemma on 022 040 3368



Date	Theme	Activities
21 st October	WAS & HVP Athletics Day	NO PAYGROUP TODAY
28 th October	Happy Halloween	- Dress up for Halloween and create some spooky crafts and enjoy some spooky treats.
4 th November	School Pet Shows	- There will be NO PLAYGROUP running this day but all children are invited to attend the Pet Shows at their local schools.
11 th November	It's Cool To Be Kind -World Kindness Day	Make cookies or similar and deliver to the pensioner flats and local businesses for World Kindness Day.
18 th November	Jump N Fun Trip	A trip to Invercargill to Jump & Fun trampoline park followed by lunch and a play at Chipmunks.
25 th November	It's beginning to feel a lot like Christmas	Put up the Playgroup xmas tree and let the children decorate it then make some yummy edible xmas trees!
2 nd December	Magical Christmas Doors of Riverton trip	A trip to Moore's Scenic Reserve Bush Track to see the Magical Christmas Doors followed by a picnic lunch.
9 th December	Crafty Christmas	-Making Christmas decorations to take home and put on our trees.
16 th December	It's Christmas Let's Party	-Christmas Party with a visit from a special gift-bearing guest. Catered lunch for all.



TUATAPERE HEALTH & GIFT SHOP

(part of Riverton Pharmacy)

69a Orawia Road

(beside the Medical Centre)

Ph: (03) 226 6999

12:00pm - 5:30pm Mon-Fri

Good selection of Vitamins, Giftware & Over-the-counter healthcare
First prescription drop-off from 1:30pm
Second prescription drop-off 4:30pm

WAI AU MEMORIAL LIBRARY

Library Hours: Fridays

10:00am - 11:30am

2:30pm - 4:00pm

7:00pm - 8:00pm



★ Firewood For Sale ★



The Waiau Star Golden Oldies are fundraising for a trip to Cambridge in 2023 to play Leamington in memory of the late Bill Wayne Cook.



- Mixed Firewood - Macrocarpa, Old Man's Pine + Bluegum.
- \$70 per metre - 10 metre minimum order
- Ready for pick up at the start of July

Contact Stump on 021 525 227

CLIFDEN PLAYGROUP

45 Otahu Eastern Bush Road. Join our FB Group to check if it's on: Wednesday (during School Term) 9:30am - 12:30pm. All mothers and children welcome.

Bring packed lunchbox for your child's morning tea.

Contact: Sarah 027 699 5234

TUATAPERE TOY LIBRARY

Tuatapere Toy Library has been a toy swap/hire service provided to the young families of Tuatapere and surrounding districts since 1989.



The purpose is to create opportunities for the little people of our community to have accessibility to toys. A small contribution of an annual membership allows families to join the group and have access to the toys. For more information or questions please text or ring Nathalie Pahl on 027 4759 075

ESSENTIAL OILS 100% PURE GIFTS OF NATURE
Florals Trees Plants Herbs Spices Citrus

To Learn More, phone or text your local Wellness Advocate
Carol Erskine Papatotara 0274 599 654



Thinking about Christmas Gifts?

What about a local calendar!



On sale now
2023
Calendars!

featuring
Local Scenes

\$15 each

Available at

The Well

Humpridge Track Office

Country Corner Crafts

Tuatapere Presby Church Folk

or contact: Lyla Sherriff - 03 226 6187

Fundraising for the
Tuatapere Presbyterian Church

The Small Job Man

Tuatapere Area

Butcher-Boner	Water Blasting
Lawn Mowing	Fence Painting
Weeding	Small Building work
Trimming	Wood splitting
	Chainsaw work

Senior Rates

Phone **John 022 164 8061**

Hens for Sale



\$10 each



18 month old Brown Shavers
Ex-commercial layers from
Te Waewae Eggs, Te Waewae Bay
True Southland Free-range

Contact Rob 03 226 6805
or 022 044 2086

COMMUNITY NOTICEBOARD

CHRISTMAS • PARADE •

SAVE THE DATE! 23 DECEMBER!

Since we didn't have one last year ... let's make this one bigger and better than the rest!

The **new format** will show all the floats and vehicles gathering down by DT Kings yard opposite the Domain entrance between 6:30-7pm and setting off into the domain at 7:05pm

*Start thinking about your awesome float!
The challenge is on!*



There will be entertainment in the domain starting around 6:30pm. Hopefully with a sausage sizzle and bouncy castle and more!

Anybody wanting to do things please call

John Munro on **03 226 6341** and let him know.

WESTERN SOUTHLAND GUN CLUB

Upcoming Shoots

13th November - Hunting & Fishing 100 Target Shoot
9.00am start at the **Pukemaori Grounds**

Entry \$70 Eye & Ear protection compulsory & available for purchase at the club. Food available.

11th December - Xmas Hamper 75 Sporting Targets
10.00am start at the **Pukemaori Grounds**

Entry \$60 Eye & Ear protection compulsory & available for purchase at the club. Food available.

1st January 2023 - New Years Day Shoot 80 Targets
10.00am start at the **Pukemaori Grounds**

Entry \$60 Eye & Ear protection compulsory & available for purchase at the club. BBQ Food available.

SENIOR CITIZENS

Senior Citizens is a group of over 50s that meet every **Friday afternoon at 1pm** at the rooms behind the RSA Hall. We are always looking for new members so if you would like a fun afternoon playing bowls, cards or just catching up with friends, come and join the group.

If you need a ride - we can pick you up!

Contact: Olive Bennett Ph (03) 2266 477 or

Alison Bennett Ph 027 224 2724

CHRISTMAS • DINNER •

SUNDAY 25 DECEMBER 2022

The Tuatapere Community
Christmas Lunch this year will be
held at Tui Base Camp,
from 12 Noon on
Sunday, 25th December 2022.



Bookings are now being taken.

We do have a seating limit so please get your
seat booked as soon as possible.

The only hitch at this stage is that the funding applied
for will not be confirmed until early December.

If, for some reason, the funding is not approved then
the Christmas Lunch will not go ahead - but I am very
confident that this will be positive outcome so bring
on the Christmas Lunch I say ... Ho Ho Ho!

Don't forget to call to make your booking for lunch!

Keri Potter

Tuatapere Community Worker

Phone 027 757 5983

WE'RE LOOKING FOR LOCAL CONTRIBUTORS

Are you interested in being a regular or semi-regular
writer of content for the Western Wanderer?

We're looking for people who would like to provide a
short article/piece of reading for each monthly issue.
It doesn't have to be every month either - you could
write a one-off piece or something every other issue if
you would prefer!

Perhaps you like to review books? Or maybe you've
got green fingers and would like to share your garden
expertise with us!

Get in touch with us at:

yourwesternwanderer@gmail.com

INDEPENDENT MIDWIFE

ISOBEL DEVERY

*Caring for women throughout
Pregnancy, Birth till six weeks
Post Natal.*

*Choices for place of birth,
Home or Winton Birthing Units
or Kew Hospital.*

*Free pregnancy tests
available on request.*

**Phone: (03) 22668822
027 2267020**

©Peece, EthicGraphics

Sewing and Mending Services Available

Experienced machinist offering fast, reliable
service with very reasonable rates.

I will mend/make anything from zip
replacements to curtain making - just ask!
Free quotes and pick-up/delivery service
within Tuatapere.



Contact **Deborah**

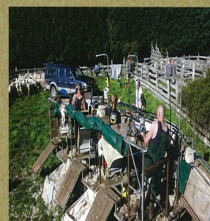
(03) 226 6783 or 021 0305 667



DAGWOOD DAGGING

*Available now to all new and existing
customers for all your crutching
requirements.*

*3 Stand or Single trailer available
7 days a week, wet or dry.*



No job too big or too small.

Competitive rates

Jeff Chambers

027 3042 241



* 13 Tonne Digger * 5.5 Tonne Digger * 2.7 Tonne Digger - dry hire or operated
 * Tip Truck * Bob Cat * Augers * Post Driver * Tree Saw & Hedge Trimmer
 * Tree Trimming * Post Driving * Fencing * Cleaning of Wintering Sheds * Site Clearance * Cartage * Gravelling * Lane Maintenance * General Earthworks

For all enquiries and bookings please contact Lance or Alice Harris
 Lance: 027 304 3714
 Alice: 027 270 0363
 Email: lanceharris533@gmail.com
 Check us out on facebook- Harry's Machines

IN & AROUND THE COMMUNITY

Tuatapere & Districts Promotions Inc

Wayne Edgerton, Chairman

After a meeting held at the Waiau Town & Country Club, the Tuatapere Promotions is back up and running.

13 people attended the meeting the following have been nominated into these positions.

Chairman: Wayne Edgerton

Secretary: Charmaine Wedderburn

Treasurer: Karen Lord

Our next meeting will be held on **16 November** at **7.30pm** at the Waiau Town & Country Club. All welcome!

Shearing magazine

Des Williams (editor)

Tel 07 839 2891 : Mob 0274 833 465

Email : shearingmag@xtra.co.nz

Member NZ Guild of Agricultural Journalists and Communicators (Inc)

LAST SIDE PUBLISHING LTD

PO Box 102, Hamilton 3240, New Zealand

WAI AU STAR RUGBY CLUB INC.



NOTICE OF ANNUAL GENERAL MEETING

DATE: Monday 5th December 2022

TIME: 7:30pm

VENUE: Rugby Clubrooms
 97 Elder Drive, Tuatapere

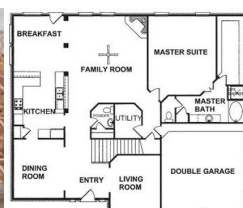
All welcome

Any inquires please contact Alice Harris on 027 270 0363 /
 Kristy Nind on 027 630 9529

PAUL ANDERSON BUILDER

AVAILABLE FOR ALL YOUR
BUILDING REQUIREMENTS.

NO JOB TOO SMALL.
COMPETITIVE RATES.
REFERENCES AVAILABLE!



Mobile: 027 890 3602

thetakis@outlook.com

Save the date!



Waiau A&P Show • 11th February 2023 • Tuatapere Domain

Waiau Squash Club 2022 Season

Debbie Fowle



Well another season of squash has come and gone again, hopefully now we are past the sanitizing & social distancing. I think this season has been a cracker for our club introducing lots of new players to squash, many of whom took to it like a duck to water, and a few oldies making a come back, making it a great social time for everyone.

Once again our club couldn't run without a great committee & that we have! Thanks to Roger Paterson, our President - he does a fabulous job and is always thinking outside the square. Kate Egerton, our bean counter - she keeps everything ticking over brilliantly, to our Club Captains - Rebecca Robertson and Sam Egerton for organizing us all. Also thanks to all the committee - if you need something done you only have to ask ... sometimes it's even done before you ask which is awesome.

This year the Central Western Inter-Club competition saw the women on a rebuilding stage! We had awesome suppers & company (the main things!) but the Mens' Teams pulled a blinder by both making it to the final of the competition - not many small country clubs would ever be able to say that! The night was well supported and the banter was on par ... it came down to the last match to decide the result but I would say the Waiau Squash Club was the winner on the night.

Our end of season wind up didn't fail to disappoint with Club Champs results as follows:

Ladies A Grade

Winner & Ladies Masters Champ: **Isobel Devery**

RunnerUp: **Kate Gray**

Mens A Grade

Winner & Mens Masters Champ: **Sam Egerton**

RunnerUp: **Lugger Clarke**

Ladies B Grade Winner: Kate Cochrane

RunnerUp: **Anna Sanford**

Mens B Grade Winner: Kerrian O'Brien

RunnerUp: **Roger Paterson**

Ladies Most Improved: Kate Cochrane & Anna Sanford

Mens Most Improved: Kerrian O'Brien

Thanks everyone see you in 2023 with our snazzy new furniture funded by Tuatapere Amenities Trust - thanks so much!



TODD & CO
REALTY

Melanie - your local salesperson

I am proud to be serving my local area, helping people from all walks of life meet their property goals.

After some great sales so far in 2022, I have a number of buyers still looking.

If you would consider selling, give me a call!

Mel Muldrew

021 068 5262

melanie.m@toddco.nz

TODDCO.NZ

William Todd & Co Ltd, Licensed (REAA 2008)



Choose Local. Choose Melanie.
Serving Southland since 1865.

MOUNTAINS EDGE CABINS MONOWAI



Hunting, Fishing, Mountain Biking,
Kayaking & Tramping
Cabin Accommodation

12 Cabins
Double and Single Available
\$35.00 per person per night

Eftpos available

Full Kitchen Facilities, Showers, Toilets, Playground
& the Tennis Courts right across the road!

We are 'pet friendly'

www.mountainedgecabins.com
Email: mountainedgecabins@gmail.com

75 Turbine Drive, Monowai. Ph. 03 225 8267

WESTERN ELECTRICAL

2008 LTD

Electrical Solutions

Domestic | Industrial | Commercial

Quality Service at Competitive Prices

- New Builds, Rewiring & Alterations
- Dairy Shed, Farm & Industrial Maintenance
- Hotwater Element Replacement
- A/H Call Out Service Provided



Ph 03 225 8974 / 027 439 3787

Fax 03 225 8973

Tui Base Camp



WAIAPU AREA SCHOOL

Year 1-13 Education

Live to LEARN, LEARN to Live

Kia ora Western Wanderer Readers!

Towards the end of Term 3, the Senior Students were taking their Practice Exams to demonstrate their knowledge and understanding of their subjects since the start of the year. The Year 9-13's were also mindful of maintaining a healthy work/life balance, participating in a range of recreational and extra-curricular activities to gain more experience and qualifications. We took advantage of some unseasonably warm Spring weather and went Surfing at Monkey Island and the Senior Volleyball team started their campaign in the weekly Southland Secondary Schools competition at Stadium Southland. Three more of our Senior Students also successfully completed their driver training with Southern REAP and passed their learner driver tests!



Congratulations to the Year 7 and Year 10 SMACMATH teams from WAS. SMACMATHs is a competition where teams of 4 students compete to solve mathematics problems as a group. The Year 10 teams performed particularly well finishing in 6th place out of 19 teams from around Southland, finishing ahead of many much larger schools, earning a special prize for their efforts.

Our Year 11-14 students are very quickly heading towards their external exams. This year WAS is giving more students the opportunity to complete their exams digitally, rather than having to handwrite their answers. This is available in many subjects, including English, Social Studies and Health. In future years, other subjects such as Mathematics and the Sciences will be able to offer digital exams



Open from 8:30am every day!

Kitchen open until at least 7.30pm

**COME IN &
CHECK OUT OUR SPECIALS**

All new coffee cards! Ask for one with your next Amore Coffee (Dine in or T/A)

- ★ Keep an eye out on FB for our change to summer hours! ★
- ★ Get in and book your Christmas functions/dinners now ★

Pre-order your morning tea and lunches by calling **(03) 226 6250** and we can have it ready for you to pick up when it suits you.

Don't forget we now have a mini-van!

Contact us to organise a night out at Tui Base Camp (pick-up and drop-off). Enquires to **James 027 837 3521**

For all of your dine in and takeaway requirements including:

- In-house roasted Amore Coffee
- In-house made pies, sausage rolls, cheese rolls
- Range of breakfast options
- Packed lunches
- Catering

Phone: (03) 226 6250

www.tuibasecamp.co.nz

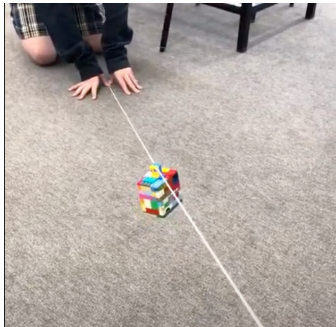
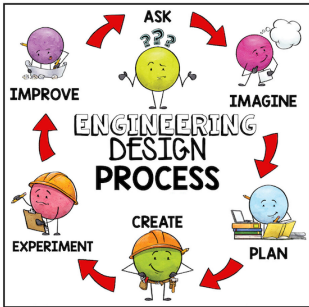


Keep an eye on our Facebook Page for our latest updates!

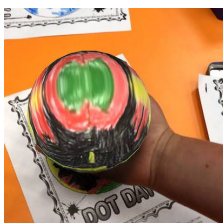
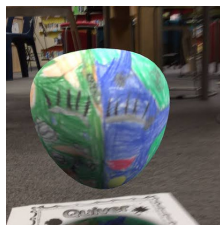
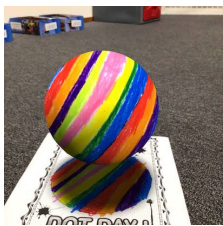


It's been full-STEAM ahead in the library this year with classes coming in to exchange library books and spend time in the awesome STEAMLab space.

With a focus on the Engineering by Design process, from lego ziplines, catapults to straw towers & bridges, students have been creatively thinking about problems and working to solve them.



September 15 was International Dot Day. After reading *The Dot* by Peter H. Reynolds out came the colouring pencils and the iPads to create some Augmented Reality dots using the Quiver App. With the we were able to make our "flat" dots into 3-D bouncing balls, bubbles, spinning balls and marble mazes! It was very cool! Look at our masterpieces!



This term for Digital Technology in the STEAMLab there's a few more Engineering by Design projects to complete, some Digital Escape Room challenges to be challenged by as well as fun coding activities with the new mini spheros!

Alex Reid CONTRACTING

**Paddock Cultivation from
Ploughing to Sowing
Dry Hire available
Aerating
Direct Drilling
Ridging
Mulching**



Dairy Lane Maintenance

Tip Trailers • Vibrating Roller • 2 Tip Trucks

Sheep Conveyor

Drenching, Vaccination etc • 3 way draft

Large Skid Steer for calf shed cleaning, loading Muck Spreaders etc

4 Muck Spreaders • 16,000 litre Slurry Tanker
Pond Stirrer • Umbilical Slurry System



Rural Contractors
NEW ZEALAND

**PHONE ALEX
0212775308 CELL
03 2255377 HOME**



Rabco Ag Ltd – 021 362 766 – admin@rabco.nz
Agricultural Contracting Specialists - Western Southland



**Full silage
& baling
service**



Cultivation – including Direct Drill & Precision Drill



Effluent – Excavators - Hedgetrimming





Picnic Pie

With summer just around the corner I thought I would share my sausage meat picnic pie recipe. This is great for those family picnics or taking up to the lake when fishing or exploring.

Ingredients

- 500g tube of sausage meat
- 10 eggs
- ½ cup of cream
- 400g of ready rolled puff pastry
- Leftover cold potatoes cut into chunks
- ½ cup grated cheese
- Tomato relish



Method

Preheat the oven to 180°C.

Line your pie dish with pastry, making sure the pastry goes up the edges.

Place grated cheese over the pastry.

Add potato chunks.

Squeeze the sausage meat in little dollops throughout the pie.

Add tomato relish also in dollops around the sausage meat.

Beat the eggs and cream together and pour into the pie.

Bake for 20-25 minutes.

You can add any extras that you would like!
For example: Tomatoes, Spinach, Grated Zucchini, Spring Onions.

WAIIAU VALLEY SHEARING LTD



Simon de Vries
Julie Heaps

027 840 9867
03 226 6212

CHAINSAW SHARPENING

All chainsaw chain sizes precisely sharpened and rakers taken down accordingly, guaranteed results

Chain only \$10 Taken Off & Refitted \$13

Please phone **027 308 2501**

WANTED TO BUY

Possum Fur, Hard deer,
Antler, Deer Velvet.

Phone Leith 027 496 3721

SOUTHLIFE
Community
CHURCH

Steve & Sharon
are Pastors
and we are an area church

We believe in Community and endeavour to show this the best we can by the way we care and serve!

MINISTRIES
"BRIDGE CHRISTIAN MINISTRIES UGANDA"

We warmly invite you to come along to one of our services. It would be great to see you

Sunday Service
10am Truro St, Orepuki



BANGING NOVEMBER SPECIALS

<p>\$23.99 EACH</p> <p>ODD Company 10pk can range</p>	<p>\$23.99 EACH</p> <p>Smirnoff Red Ice (incl Zero) Smirnoff Seltzers 5% 250ml 12pk cans Smirnoff Soda 330ml 10pk cans</p>	<p>\$24.99 EACH</p> <p>Cruiser 7% 12pk can range</p>	<p>\$25.99 EACH</p> <p>Clean Collective 5% 250ml 12pk cans Rinse 6% 330ml 10pk cans</p>	<p>\$25.99 EACH</p> <p>Part Time Rangers Scapegrace; Cheeky Iced Tea 330ml 10pk can ranges</p>	<p>\$27.99 EACH</p> <p>JB Gold CC Premium 250ml 7% (incl Zero) 12pk cans</p>
<p>\$28.99 EACH</p> <p>JB & Cola; CC 330ml 4.8% 10pk bottles</p>	<p>\$28.99 EACH</p> <p>Coruba (incl Zero) 7% 250ml 12pk cans</p>	<p>\$22.99 EACH</p> <p>KGB 7% 250ml 18pk cans</p>	<p>\$33.99 EACH</p> <p>Tui Vodka Soda (ex bourbon) 7% 250ml 18pk cans</p>	<p>\$39.99 EACH</p> <p>Long White 15pk bottle range</p>	<p>\$40.99 EACH</p> <p>Jim Beam Canadian Club (incl Zero) 18pk 330ml cans</p>
<p>\$10.99 EACH</p> <p>Jacobs Creek (ex Sparkling range) Montana Classic ranges</p>	<p>\$12.99 EACH</p> <p>Wolf Blass Yellow Label range (ex PN)</p>	<p>Not Stocked</p> <p>Dashwood range (ex reds)</p>	<p>Not Stocked</p> <p>Brown Brothers Moscato range</p>	<p>\$15.99 EACH</p> <p>Villa Maria Cellar Selection Esk Valley ranges (ex PN, Syrahs Grenache & Merlot Cab Sav)</p>	<p>Not Stocked</p> <p>Hardy's 1L range</p>
<p>\$36.99 EACH</p> <p>JB Devils Cut JB Black Midori all 700ml</p>	<p>\$41.99 EACH</p> <p>Jameson Jameson Cold Brew Absolut; Beefeater flvrd ranges all 700ml</p>	<p>\$41.99 EACH</p> <p>Malibu Kahlua 1Ltr (incl salted caramel) 1Ltr</p>	<p>\$44.99 EACH</p> <p>Coruba (incl Gold) 1L</p>	<p>\$44.99 EACH</p> <p>Jim Beam Canadian Club (incl spiced) Larios 12; Rose; Citrus 1Ltr</p>	<p>Not Stocked</p> <p>Haagen Strong 7% 500ml cans</p>
<p>Not Stocked</p> <p>Mac's 6pk can range (incl cider / stunt double)</p>	<p>\$15.99 EACH</p> <p>Kingfisher Strong 330ml 6pk cans</p>	<p>\$21.99 EACH</p> <p>Tiger; Crystal Ultra Low Carb 12pk bottles</p>	<p>Not Stocked</p> <p>Orchard Thieves 12pk range</p>	<p>Not Stocked</p> <p>Somersby 12pk bottle range</p>	<p>Not Stocked</p> <p>Haagen 15pk bottles</p>
<p>Not Stocked</p> <p>Peroni 12pk bottles</p>	<p>\$25.99 EACH</p> <p>Lion Red; Waikato; Speights Summit 15pk bottles</p>	<p>\$25.99 EACH</p> <p>Monteith's (classic & batch brewed ex cider) 330ml 12pk bottle & can ranges</p>	<p>\$27.99 EACH</p> <p>Steinlager 15pk bottles</p>	<p>\$29.99 EACH</p> <p>Heineken 15pk bottles</p>	<p>\$34.99 EACH</p> <p>Tui; Export Gold; Extra Low Carb; DB Draught 24pk bottles</p>
<p>\$39.99 EACH</p> <p>Export 33 24pk bottles</p>	<p>\$42.99 EACH</p> <p>Steinlager Pure Stella Artois 24pk packs</p>	<p>Not Stocked</p> <p>Asahi 24pk bottles</p>			

Promotion period between 1/11/2022 to 30/11/2022. While stocks last. Promotion only available at participating stores. Please contact your local store to confirm whether they are participating in the promotion and check the pricing in-store prior to purchase. Online pricing will vary.



100%
NEW ZEALAND
thirstyliquor.co.nz



Follow us on
SOCIAL MEDIA



ASK ABOUT
LOYALTY CARD
BENEFITS &
GIFT VOUCHERS





Remember ... If it can go in the Yellow Bin it can go to our Recycling Centre at the end of King Street, in Tuatapere.

What goes in the yellow-lidded bin?

Invercargill City Council and Southland District Council have a commingled yellow recycling bin service.

- Plastic bottles, clear and coloured
- Plastic containers, pots, tubs, trays and soft plastics
- Metal cans and tins
- Non-food grade white polystyrene
- Paper and cardboard
- Glass food and beverage packaging (bottles and jars)

How to prepare the recyclables:

- Empty, clean and dry (Wash and **DON'T Squash**)
- Do not flatten the plastic bottles, metal cans and tins
- Flatten the paper and cardboard
- Lids, caps, bottle neck rings, film lids, pumps and triggers removed and placed in the **RED BIN**

What **cannot** go in the commingled yellow recycling bin?

- Dirty and/or unwashed plastic, metal and metal cans
- Food waste
- Clothing, fabrics and shoes
- Drinking glasses, window or windscreen glass
- Rubber, tyres and hosing
- Building materials and garden waste
- Electrical appliances, cords and cables
- Batteries
- General rubbish

Neat Cut

Phone: Anita Green 027 506 2418
Tuesday 9-5pm, Thursday 10-8pm, Friday 10-5pm - Appointments are encouraged.

CHAMBERS REPAIR SERVICE

45 Half Mile Road, Tuatapere

Ph: (03) 226 6654

- 24 hour Self Service Fuel
- Full Mechanical Workshop
- NZ Post Centre
- Agents for Wide Span Garage



2022 / 2023 Fishing Season Licences available now

Children Under 12	Free	Junior	\$29.00
Adult	\$145.00	Loyal Snr	\$123.00
Local Area	\$116.00	Family	\$188.00

Other Licences include Day, Short Break, Long Break, Winter & Non Resident

MTA Gift Vouchers Available

PLATE METER SERVICES
TROUGH CLEANING SERVICES

- Specialist in quality pasture meter reading with advanced sensor technology
- Provide 200 measurements per second or 18,500 readings over a single 500m pass
- Provides a fully integrated electronic support system
- Provides a secure web-based storage of information with easy access
- Prompt generated feed wedges for rapid decision making and seasonal comparisons
- Generate reports at the gate, supplying valuable pasture cover data and comparable results every time
- Improve health & increase animal hydration
- Enhance production & improve water quality
- Reduce bacterial/algae contamination of trough water

CLEAN TROUGH WATER MEANS IMPROVED LIVESTOCK HEALTH

Now 2 bikes available for pasture metering

Brett George • P 027 351 3408
E platemeterservices@gmail.com

LOGIC GRID PUZZLE

Four students (Amy, Cathy, Frank and James) were the leaders of four teams (Red, Black, Green and Purple).

Each team competed in field day games.

Use the clues below to determine who was the team captain and which team won first, second, third and fourth place.

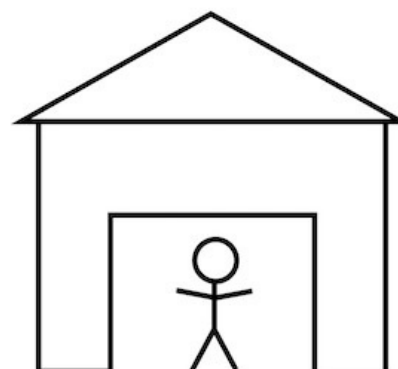
1. Amy was the captain of the red team and did not finish last.
2. The team that placed first wore black jerseys.
3. The purple team placed third with James as captain.
4. Cathy's team did not place 4th.

	Red Captain	Black Captain	Green Captain	Purple Captain	1 st	2 nd	3 rd	4 th
Amy								
Cathy								
Frank								
James								

1 st				
2 nd				
3 rd				
4 th				



Can you copy the image below without ever lifting your pen from the paper?
(it is possible!)



Your Local Graphic Designer & Print Specialist

McMAHON design studio

f Design • Print • Copy



The Festive Season is almost here...
Let us help you plan the perfect celebration

GET ORGANISED AND STAND OUT FROM THE CROWD WITH OUR PROMOTIONAL SOLUTIONS.

Event Planner Guides & Seating Plans Customised to your venue
Assistance choosing a theme, style & colour palate with Style Guide
Save the Date Cards & Invitations with matching envelopes
Social Media/Print Advertising Design & Powerpoint Presentations
Posters A0, A1, A2, A3, A4 & custom sizes available
Flyers A4, A5, A6, A7 & custom sizes available
Signs Custom designed vinyl decals applied onto wood, acrylic or metal. Various sizes and options available
Tickets Custom sizes available, printed on gloss card with perforation if required.
Name Tags/Lanyards Business Card size, printed on gloss card or vinyl decal applied to metal pin.

WE HAVE GREAT STATIONERY & DECOR OPTIONS TO MAKE YOUR NIGHT SHINE

Banners, Bunting, Pull up Signs & Flags Contact us for more details
3D Lightboxes cut from card with transparent inner liner
Cake/Cupcake Toppers cut from metallic, glitter card stock or acrylic
Paper Christmas Wreaths
Napkin Rings / Placemats
Favour Bags / Boxes & Customised Gift Wrap / Tissue Paper
Table Cards
Custom Wine Bottle Labels
Gift Tags & Labels
Etched Glassware
Certificates & Gift Card Holders

REMEMBER YOUR NIGHT FOREVER WITH A PERSONALISED PRINT

Calendars - Photo Books - Framed Wall Prints - Canvas Prints

Get in touch with us today
for your free
consultation & quote!

We can design the perfect package for your event and budget.

9 Cumnock Street, Wallacetown

OPENING HOURS:

P: 027 242 8109

Monday, Tuesday: 9.30am - 4.30pm

Wednesday, Thursday: 9.00am - 4.30pm

E: mcmahondesign@outlook.com

Friday: 9.00am - 1.00pm



Diggin' in the Cabbage Patch

Let's talk tomatoes! There's still time to get them planted. Choose a sunny spot for your tomatoes. It's best practice not to plant your tomatoes in the same spot as last season, or in the same spot as potatoes were planted as diseases can remain in the soil and affect your new crop. The better the soil, the better your plants will grow. If you are starting with an existing garden bed dig in organic matter and try adding a layer of Tui Tomato Mix, specifically formulated with extra potassium to encourage a plentiful harvest of big juicy fruit. If planting in pots and containers definitely use some Tui Tomato Mix.



Tui Garden Planting Guide

If you're growing from seed rather than seedlings, you'll need to get started about a month earlier to give your seeds time to grow. The best times to plant are early in the morning or late in the day, so the plants aren't exposed to the hot sun straight away.

Directions for planting in garden beds:

- Place stakes in the soil for each tomato plant before planting to provide support and avoid damaging the roots later on.
- Before planting your tomato plants, soak in a bucket of Tui Organic Seaweed Plant Tonic and allow to drain. This will help prevent transplant shock.
- Add a layer of Tui Tomato Mix to the planting area.
- Dig a hole, approximately twice the depth and width of the root ball of your plant.
- Gently loosen the root ball of your plant and position in the centre of the hole. Fill in with Tui Tomato Mix (optional)
- Press soil gently around the base of the plant.
- Tie the tomato plant to the stake.
- Water your plant well and continue to water regularly.

Nourish

- Feed your plants and they will feed you. Plants use nutrients from the soil as they grow, so replenishing the nutrients used by your tomatoes ensures they will grow to their full potential. For tomatoes planted in garden beds feed every four weeks during key growth periods of spring and summer.
- Keep your tomatoes well watered. Well watered, well nourished tomatoes will have a better chance of keeping insect pests and diseases at bay.

Tips

- As your tomatoes grow, remove the laterals to encourage bigger and better fruit. Laterals are the shoots that grow out from the side of the stem.
- To reduce the chance of blight, avoid watering plant leaves.



Ice cream & Milkshake Parlour

16 Orawia Road
6am - 4pm every day

Don't wait until 8.30 for breakfast, "THE WELL" is open from 6 AM with a great range of breakfast options (Our ALL DAY BREAKFAST is a real winner)

Also in house are SAUSAGE ROLLS, PIES, CHEESE ROLLS, and a range of tasty hot foods, try our SEAFOOD CHOWDER and World Famous PEA and HAM SOUP.

Not forgetting the WAFFLES, people come a long way to try them - and then come back for more.

A huge range of ICE CREAMS, and MILKSHAKES to satisfy everyone. Ask about our HOUSE SPECIALITY - it changes weekly. SANDWICHES made as you wait, and beautiful TOASTED SANDWICHES.

BUT THERE'S MORE ...
COME ON IN, TASTE, ENJOY, RELAX AND JUST BE

THE WELL - TUATAPERE
Home of the Humpridge and where summer days are longer than anywhere else in the world.

YOUR BUSINESS CARD COULD BE HERE!

CONTACT
yourwesternwanderer@gmail.com

FOR PRICING/DETAILS

Tuatapere Freight

LOCALLY OWNED & OPERATED

RUNS MONDAY TO FRIDAY
WEEKENDS BY ARRANGEMENT

Phone Brandon
027 436 4360



Shirley Whyte
Your local realstate specialist living & working in Western Southland
now also an Accredited Justice of the Peace.



for: 
Friendly service, reliability, sound local knowledge
in Western Southland, Te Anau & Stewart Island
All enquires welcome - all calls answered

Harcourts  M 027 504 52200 O 03 214 4080
E shirley@harcourtsinv.co.nz W www.harcourts.co.nz

Holmwood Real Estate Ltd Licensed Agent REAA 2008

Kia ora, Ni hao, Kamusta
Western Wanderer Readers

Hauroko
VALLEY PRIMARY SCHOOL

We are near the finish line with a shorter term of just 9 weeks. Our teaching and learning programmes to end the year involve a variety of curriculum activities and events. Our tamariki enjoy this special time, with many highlights, we look forward to sharing with you all!

Hauroko Valley Happenings

Kowhai Superstars - We have been busy with Athletics practises. Kowhai Super stars have enjoyed learning running, jumping and throwing skills with all the teachers. It is a great fun way to get to know the other teachers in our school. Check out our action at athletics day!



Mighty Matai - has enjoyed the introduction of Fundamental Movement into our daily programme. Fundamental Movement supports our vestibular system to help us learn better and is fun! **Walking fingers up a pencil** - uses fine motor skills, and concentration. **Legs up the wall** - gets our brains ready for learning. It is a great wee challenge that we loved doing!



Rural Lifestyle Residential
For all your Shearing Services.

 **TAKITIMU**
**No mob too big
No mob too small
We do it all!**

**Contact Ricky Skipper to book in now
027 351 2620**

Specialising in
Dairy Conversions
Rural Fencing
Post & Rail

H Gill Fencing,
Eastern Bush
Phone 021 225 5489
After Hours 03 225 5488
Email hamish@hgillfencing.co.nz





 **accelerate**
PHYSIOTHERAPY

office@acceleratephysio.co.nz
60 Deveron Street, Invercargill
(off street parking)
0800 291 475

Accelerate is a gentle form of exercise, effective in providing long term solutions after an injury, especially low back pain.







We have interests in:

- > Spinal/Back & neck injuries
- > Sporting Injuries
- > Running, Cycling & Multisport
- > Men & Women's Pelvic Health
- > Acupuncture
- > Balance & Dizziness
- > Workplace Injuries / Ergonomic Onsite
- > Work Evaluations & Educations
- > Pilates

Joel Barnes
BPHIT, BEXSL

Andrea Robertson
BPHIT, PG Cert ACUP

Andrea Murray
Dip PHIT Dip M.I.

Find us on facebook 

www.acceleratephysio.co.nz 

Hauroko Happenings

Team Totara - We have created amazing art doorways to our imagination based on our favourite books and authors that are on display in our classroom. Our eager engineers have competed to make the tallest, strongest, and sturdiest pasta towers! Some reaching over 50 cm tall! Check out team Totara's eager support for others at our inter-school athletics day.



Radical Rata - have been training for athletics daily and mastering specific techniques for each run, jump, and throw event to further their skills. Thanks to Blayne for supporting High Jump training. Our senior students have a busy calendar of events so are pacing themselves with the final sprint and finish line in sight! Although busy our learners are engaged throughout.



This Term we look forward to Southland Athletics, Calendar Art, Science Roadshow for Years 4&5, Touch, Mitre 10 Tough Kids Years 4-6, swimming lessons & sports, Bannockburn Camp for Year 5&6, Humpridge Track for Year 7&8, leavers BIG day out, production and prizegiving all in between our classroom learning!

We look forward to sharing more of our learning adventures with our Western Wanderer whānau soon.



Registered **ELECTRICIAN**

For all electrical work
No job to small
A/Hours service available

Jay Brownlee
8 Carlyle Street, Tuatapere 9620
A/H 03 226 6673
Mob 027 4965 863
sparkieintuatapere@gmail.com

For all your Accounting and Tax Solutions

Ask for Janice or Trevor England

 **03 2266110**

Aparima Accounting Ltd
57 Main Road Tuatapere



CANTERBURY CARS

4WD Specialists

For all your vehicle requirements

Cars, utes, 4WDs, vans

Finance available

Contact: Murray Dowling
027 556 2655

Visit our website
www.canterburycars4x4.co.nz

Lynley McKerrow

Celebrant
Funeral and Marriage

P: 0272 974 767
E: nanamac60@xtra.co.nz

with care - with love - with dignity



Ratty Says ...

Waiau Memorial Library



My brain hurts. Who thought thinking could cause so much pain. OUCH! I had my story all ready to go when I was told "No", I couldn't use it. What? But it was going to be soooo good, it might have made people laugh. Now, sometimes it's fun to ignore what you've been told to do, just to see what happens, because you like to live dangerously. Then there are the times when you do EXACTLY what you were told to do because there are some people you do not annoy. This is one of those times. Ratty is silly but not that silly.

I've been wracking my brain trying to think of something to say but I'm stuck. There's been no sympathy. They said "I TOLD you to always have a backup story, just in case." I don't like 'I TOLD you so'. I think I get 'TOLD' waaaay too much. I'm just a little Rat with a little brain. It can barely do one story at a time.

I was going to give an update of my latest project, then I remembered that I hadn't started it yet. Ooops! I've started reading a book about a vampire and I thought I could do a review about it but I haven't finished it yet. And, I might not finish it because it could have scary stuff in it, like creepy crawlies. I don't like things that creep and crawl. Except for earthworms, they're cool.

I know what I can do - show you a photo I took. It's really cool. See, it's a tree but it's got a face - I asked the tree how old it was but it just ignored me. I think it's really, really old.

I'm still learning how to take photos, I wasn't supposed to be in it. Next time I'll try to remember to stand behind the camera.



**TUATAPERE
HANDYMAN SERVICES**

Barry Bennett
(03) 226 6730

- **Painting - Interior/Exterior**
- **Waterblasting**
- **Spider & Fly Spraying**
- **General Repair Work**
- **Lawnmowing**
- **Weed Spraying**



RAW FARM HOMEKILL

Wayne Saunders
Qualified Butcher

027 457 6350

rawfarming@yahoo.co.nz

82 Clifden Highway
Tuatapere



Cut up the way you want

- Beef
- Pork
- Sheep
- Venison
- Other game meats
- Traditional Smallgoods

Remember to ring & book in your beef! It's getting busy!

The Adventures of Charlton

We ended up in Scotland on one of our visits to the United Kingdom and Europe. Friends took us for a drive north from Manchester in England around the back roads; mind you it had snowed a lot overnight and we almost got stranded in a snowdrift in a forest as the car slid on an icy patch. Well, you should have heard the commotion! But we got to where we were going without harm.

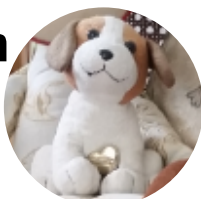
I looked around the countryside and saw a lake and a mountain behind it. And it looks very much like Lake Wakatipu and Ben Lomond in Queenstown. I suppose that the people that came to New Zealand from Scotland could see how similar the original Ben Lomond in Scotland looks to the Mountain here and named it the same. I was very disappointed further north in Scotland not to see Nessie, the Loch Ness Monster.

Before we got to stay with our hosts in the town of Falkirk, we went to see Hadrian's Wall. It is a former defensive fortification of the Roman province of Britannia, and they built it in and around AD 122 in the reign of the Roman Emperor Hadrian. While we were there, I heard someone say that it was built to guard against the Haggis - an enemy from the north-east not actually seen even to this day. I could not help but think that if you cannot see someone, surely they are not to be feared. But there you have it; it was well worth the visit to the north of England.

So, they say, no-one has ever seen a creature called "Haggis"; but then, Haggis is a most treasured inclusion to a Scottish breakfast. I had it myself, and it was very good. They said that it was very fresh as it was "road-kill" that our host found going for his walk in the morning along the road. Much like we see unfortunate Rabbits or Possums at times here in Southland.

Some of you might have seen our late Queen Elizabeth was in Edinburgh on her last journey home just recently. Edinburgh is such an interesting city; much history has taken place there and all the buildings in the old city and the castle look and feel like they still carry the weight of it all. They look sturdy, strong and protective. I suppose the people that live there are glad to have such energy about them to give them strength and support.

After breakfast with our hosts we went to see the Falkirk Wheel. A feat of engineering you would have to go and see for yourself in action. As the wheel turns it lifts the barges, one up and one down from one canal to the other. It is 35 metres tall, same as 8 double decker buses stacked on top of each other. Imagine! Then we went on to explore more of England. I will tell you about that next time ☺



PROPERTIES WANTED!

Contemplating selling? You might be surprised by what your property could fetch on today's market

Contact Julie today for a free appraisal and to discuss how you could take advantage of this buoyant property market



Julie Guise

021 256 4164

julieguise@sre.co.nz

SOUTHLAND REAL ESTATE LTD
Licensed under The Real Estate Agents Act 2008 MREINZ

SOUTHLAND REAL ESTATE LTD
Licensed under The Real Estate Agents Act 2008 MREINZ

For all your fencing requirements

WESTERN FENCING
SHEEP | DAIRY | DEER



Call BEVAN 0277 413 213

ADS

ANDERSON DRAINAGE SERVICES

Keeping Southland Flowing



Fraser Anderson

021 162 0210

fraseranderson1@gmail.com

Forest Hill, Southland

Follow us on Facebook

Call us today!

- ✓ Tile Cleaning
- ✓ Culvert Cleaning
- ✓ Septic Tank Blockages
- ✓ Domestic Blockages
- ✓ Rural Drain Blockages



SOUTHERN SPARX
ELECTRICAL

CLAYTON PRIME
Registered Electrician

📞 021 951 365
✉️ southernsparx@gmail.com

For bookings contact
Rochelle 📞 021 588 257

DOMESTIC | COMMERCIAL | INDUSTRIAL



MR STEEL
TUATAPERE
PH: 027 276 6816
MALCOLM

**For all your engineering,
steel fabrication and repair needs!**

FORDE WINDERS SHEARING LTD
Available for all new and existing clients

For all your shearing and
crutching requirements

Please phone
Darin Forde 027 229 7760
Jeremy Winders 027 231 4299



**BEN MCMASTER
BUILDING**

Ph: 027 202 7955
benmcmaster@live.com

- Licensed Building Practitioner
- Sheds, renovations & new homes
- Based in Western Southland

You dream it, we'll build it

MEDIA RELEASE: 5 OCTOBER 2022



SDC TO PRIORITISE PLAN CHANGE FOR PLANTATION FORESTRY

Southland District Council will prioritise the rules around plantation forestry as part of a wider review of the Natural Features and Landscapes plan change.

At its final meeting of the 2019-2022 triennium in Te Anau today, Council discussed concerns that productive farmland and high-country areas were being lost to long-term plantation forestry, with associated environmental degradation. Plantation forestry was identified as an activity that could significantly impact outstanding natural features and landscapes.

The District Plan policy framework currently limits Council's ability to manage the location of proposed forestry practices and, as a result, manage any potential adverse effects on the environment within areas identified as having outstanding natural features and landscapes.

This work is part of a larger review of Section 2.3 of the District Plan – Natural Features and Landscapes, which Council endorsed in June 2020.

"Since this endorsement the need to prioritise a review of the rules around plantation forestry to protect our natural features and landscapes has become apparent," says Margaret Ferguson, Council's resource management policy planner. "Southland has some incredible natural spaces and this is all about looking after what we've got for future generations."

Work began in 2020 to review the Natural Features and Landscapes section of the District Plan.

A three-pronged approach is being undertaken to identify important landscapes and natural features in the district, with a desktop study by landscape architects highlighting areas of potential importance, a cultural landscape assessment and community views.

A campaign called What's your view? was launched in 2020. Its aim was to work alongside the community to gather feedback that could help to identify important landscapes and natural features in the district. The objective is to protect these natural features and landscapes for future generations.

Expect to see more communication about this review process over the coming months. We will be continuing community engagement as the review progresses.

For further information please contact:

Margaret Ferguson, Resource Management Policy Planner
24 Phone 0800 732 732

Waiau Town & Country Club

<https://www.waiatownandcountryclub.co.nz>

Join us as we transition our image
and food scene at the club!

Our Bistro is open for Dinner Service
5pm-9pm* Thursday to Sunday!

(*Bistro may close from 7:30pm onwards if not required)

**We are the perfect place for your
functions/birthdays!**

We can cater! Call us to discuss options!

03 22 66 489

Have you met
Dylan - our new
Chef/Co-Manager?

Family Friendly | Happy to cater
for dietary requirements.
Please pre-book for groups
of 8 or more.

Club Opening Hours:

Mon - Thurs 4pm till close.

Fri 3pm - close.

Sat Noon - close.

Sun 3pm - close.

New Members Always Welcome!

*Just pop in or call the club for a nomination membership form.
Annual membership 2022/23 is \$50 p/p or \$30 p/p for pensioners.*

Phone: **03 22 66 489** | Address: 41 King St Tuatapere

Email: waiautcc@gmail.com | Facebook: [facebook.com/waiautcc](https://www.facebook.com/waiautcc)

| Courtesy Van Available |

Upcoming
Events

***GUY FAWKES** - November 5th - starts at dark

***R18 DESSERT EVENING** - November 12th - 7pm

All bookings must be in by NOVEMBER 1st or we will have to cancel again.

***STEAK NIGHT** - every Thursday night - Only \$25

***MEMBERS DRAW & RAFFLES**

drawn every Friday night! Approx. 7.30-8.30pm

**Keep an eye on our Facebook Page for more details on
upcoming events ...
like our FIRST annual MOVEMBER & Men's Health Evening!**

We look forward to seeing you!

**For Landscaping,
Land Maintenance,
Gravel Supply & Cartage**

**GRADES OF CRUSED & SCREENED GRAVELS,
ALKATHENE LAYING, ROOTRAKING,
FARM TRACKS, DAIRY LANES**



**ELEVATOR SCRAPER,
BOBCAT & ATTACHMENTS,
LANDSCAPING, TRENCHING AUGERS**

Supplies of Gravel Ex Waiau River

River Run Screened Grades Concrete Gravel Pea Gravel
Rejects for soak holes Crushed - AP30 & AP65
Peebles for Sheep and Cattle yards and calf sheds
Fines suitable for cow lane capping

**K J SUTHERLAND
GRAVELLING &
AGRICULTURAL CONTRACTOR
2475 OHAI-CLIFTON H/WAY
ORAWIA RD2 OTAUTAU 9682**

Ph 0274 367 934

**K.J. Sutherland
Contracting
Bobcat T190**

**With attachments: Landscape Rake,
Augers and Trencher**

**Suitable for all landscaping, shed and yard
maintenance**

Muck-spreader and tip trailer available



**PHONE KEVIN
027 367 934 / (03) 225 5716**

MILLARS

- PLUMBING
- GAS FITTING
- DRAINLAYING
- LICENSED BUILDER

Master Plumbers
f Ph 027 4340 705 or 03 225 8567



We specialise in:

**Resource consents
Farm environmental plans
Policy advice
DOC concessions
Landscape plans & assessment**

We take care of the paperwork,
so you can do what you do best!

Sonya: 027 5050 077
Rebecca: 027 4246 129
www.slwp.co.nz
Locally owned & operated

BARRETT *Ag* LTD

FULL SILAGE AND BALEAGE SERVICE



ALL CULTIVATION
INCLUDING DIRECT DRILL
AND STRIP TILLING - PRECISION PLANTING



EXCAVATION
20 TONNE DIGGER/ GRADER
D85 BULLDOZER/ ROLLER
TIP TRUCKS AND TRAILERS



Barrett Ag Ltd
Ph: Kahu- 027 5183 448
E: barrettagltd@gmail.com
FB: Barrett Ag



WaterForce

Irrigation Systems
Pumping & Filtration
Effluent Dispersal
Water Management

20 Winton Hedgehope Highway, Winton
03 236 9805 www.waterforce.co.nz
0800 4 FORCE (4 36723)

JAM

Agri Spreading

Liquid Foliar Spray Contracting

- ✓ Fertiliser
- ✓ Fish Fertiliser
- ✓ Gibb & NBoost
- ✓ Herbicide
- ✓ Humates
- ✓ Soil & Herbage Testing

Jon – 021 575 071

DRAKE

PLUMBING & DRAINLAYING LTD

C: 0274 247 102
T: 03 225 8652

E: admin@drakeplumbing.co.nz

KIERAN DRAKE
Certifying Plumber
& Drainlayer

LOCAL HISTORY - SPECIAL FEATURE

Continued from October's Issue ...

My Early Years

by George Charlton

There used to be a dam beside our house and we children would skate on the ice when it froze over in the winter time. Then there were the firewood cutting days; Jim had his saw bench which he ran off a huge belt which was connected to the tractor. One Saturday was spent cutting for the Williams family and the next Saturday for the Charlton family. I remember that the Williams boys had possum traps and I used to go catching possums with them. When I look back to those days now I realise that things were much more family orientated. There were no televisions or computers and no fast cars. Where Mum and Dad went the whole family went with them. I can still remember very vividly one time we were playing in the sawdust and I jumped off a heap of sawdust in my bare feet and landed on a board full of nails and ended up putting four 4 inch nails in the bottom of my foot and out the other side! I can still remember Dr Elder spending hours cleaning and dressing my foot. Not long after that Dad bought me my first bicycle to ride to school and I was always trying to better my time down Jenkin's Hill. The times got faster and the corner arrived a lot quicker and then disaster struck! I went into the bottom corner by Dave Jenkin's house on my way to school and got rather wide and hit some loose gravel and arsed off the bike wearing short pants. My bare leg hit the gravel and tore my kneecap off on my left leg. I remember Dr Elder spending hours cleaning the gravel out from where the kneecap had been and then stitching what was left of the kneecap back on. In 1955 Dad left the National Bank and bought the Dairy beside the RSA Hall which was owned by Mr and Mrs Dewe. It was a big change for Catherine and myself because everything we had done before had been as a family and now Mum and Dad worked in the shop from 8am to 8pm seven days a week. We had to make our own fun. Being ten years of age I soon made new friends.

I began my schooling at Waiau District High in 1953; the year of Queen Elizabeth's Coronation and the climbing of Mount Everest by Edmund Hillary. The headmaster then was Mr Worthington. He was a strict bugger; ex-army Major from the 2nd World War. About that time there was a polio epidemic and a school friend, whose name was Gordon Pratt, had twin sisters who died of polio. I, myself, had a very mild type of polio. I remember being in bed for weeks with a high temperature and my parents sitting by my bed twenty four hours a day for

days on end. Dr Elder visited me three to four times a day until I became better.

In the summer Tennis was my main sport, with a little bit of Cricket. My father encouraged me to play tennis as this was his main sport after rugby. Dad still played tennis and I remember having many an enjoyable game with him and the late Dr Elder. **The Tuatapere Tennis Club** played against teams from Orawia, Pukemaori, Clifden, Papatotara, Orepuki and Pahia. This was called the Waiau Tennis District. A Waiau team would be selected out of these clubs which would play other districts such as Eastern Southland and Central. In 1959, at the age of fourteen, I won the Waiau Championships, which my father had won in 1938-39, so both our names are engraved on that cup. My oldest son, Andrew, won the same Championship in 1987. That Cup today is still played for by students at what now is called Waiau College. In 1961 I won Western and Southland championships and was selected for a Southland team to play the North Island team. By this time, having moved to secondary school, more opportunities opened up for me and I played top grade tennis for a number of years.

Secondary school was a big step up from Primary. Mr Worthington, by this time, had retired and Mr Harold Latham was now Headmaster. He was worse than our previous one! I remember him threatening me every time he caught me smoking. He would give me six of the best. This happened at least once a week. Half a dozen of the boys from my class would sneak down the bush track behind the tennis courts to have a smoke by the river. One of the boys, who didn't smoke, would stand up the top and give a whistle if a teacher turned up. This particular morning we heard a whistle and took off up a prearranged escape route. Being last I happened to look up and saw Mr Latham and Bernie Jefferson, who was Deputy Headmaster, coming hell for leather down the bank. All of a sudden there was an almighty scream and Mr Latham had tripped over a tree root and was sliding down the bank on his stomach and ended up in a mud hole at the bottom. By this time we were back up the bank and back in our class, just as the bell went for school to begin again. Seconds after the bell went the classroom door burst open and Bernie Jefferson roared "Charlton, you and your friends to the Headmaster's office immediately!" On arriving at the Headmaster's office there was Mr Latham sitting on a chair with mud from head to toe. I remember starting to laugh and he was beginning to froth at the mouth as he became wilder and wilder. They knew who the culprits were but could not prove anything as they had not seen our faces. There are many more incidents I can recall but cannot write about! Three weeks after this incident I bade farewell to Waiau District High and began my working life.

**Looking for a babysitter or
someone to mow your lawns?**

Well, you're in luck!

**I'M A RELIABLE TEENAGER
LOOKING FOR SOME WORK**

Contact Jay on 027 242 2890

TUATAPERE OUTDOORS & HARDWARE

For all your

Gardening tools, lawn care, garden hoses, insect and disease sprays, potting and compost.

We have those building requirements for that weekend job with a good selection of silicone, nails, screws and bolts.

New fishing rods and reels, fishing lures, good selection of soft bait, fishing nets, flounder and eel nets.



Good selection
of giftware.

Come in, check out
what we have.

Contact:

Judy **027 225 8192**

Paul **027 890 3602**

Shop **(03) 226 6363**



027 252 7933

- ☒ Renovations
- ☒ Extensions
- ☒ New Builds
- ☒ Sheds/Farm buildings
- ☒ Decks
- ☒ Pre-purchase house
Inspections

Call us for any building requirements

Ph 027 252 7933 email: aaroncbltd@gmail.com



Agricultural Contractors servicing Western Southland and beyond.

BALAGE - SILAGE - GROUNDWORK - FEED TRADING
Nigel 021 226 6156 / fowlecontracting@gmail.com



Tim and Superior go the extra mile

Are you frustrated with the lack of service from your local fertiliser consultant, peddling the same advice year after year regardless of your production outcomes, environment and sustainability?

Give **Tim Adcock** of Superior Fertiliser Specialists a call. He will bring a whole new meaning to service and client/advisor relationships.

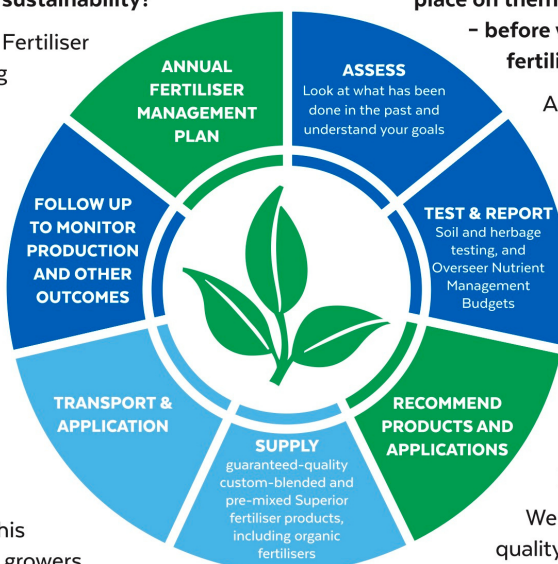
Tim is a key member of the highly skilled Superior team totally committed to helping you develop healthier, more productive soils and plants.

We form a specialist fertiliser company that provides high quality advice and products at competitive prices. We have been doing this for South Island farmers and growers for just on 20 years.

Superior promotes a total soil care package. First, we get to understand the make-up, nutrient status and health of your soils, the demands you are going to place on them, and your production goals – before we apply one kilogram of fertiliser.

A comprehensive regime of vigorous soil tests will be undertaken and the results will provide the basis of a Superior Fertiliser Management Plan customised for your unique situation. This will complement your farm's Environmental Plan and provide the blueprint for an ongoing annual fertiliser programme.

We then supply guaranteed-quality solid fertiliser for your pasture and crops, monitor production and other outcomes, and update your Plans as required.



It's free to talk so don't hesitate to give Tim a call.
Phone 021 418 224



Tim Adcock
Fertiliser Advisor
Otago/Southland
021 418 224
tim@superior.net.nz

 FERTILISER SPECIALISTS
SUPERIOR
www.superior.net.nz

TUATAPER SERVICE STATION

20 ORAWIA ROAD
PHONE: 03 2266475

HYDRAULIC FITTINGS & HOSES

WE STOCK A GOOD RANGE OF CRIMP ON HYDRAULIC FITTINGS FOR AGRICULTURE HOSES. WE CAN ALSO REPAIR OR MAKE UP NEW HOSES.

WHITEBAITERS

We have all our well-made nets in stock now.

We also have plenty of mesh and ulstron netting if you need to recover any damaged nets.

We have waders, rope, pulleys, cable ties, mutton cloth and much more so come in and have a look.



RIDGELINE CLOTHING

We have a small number of pink and blue Little Critters Packs still available.

These are no long available so out they go at \$70.00

Blue Camo – Sizes 8 & 12

Pink Camo – Sizes 8 & 10



NZ TRANSPORT AGENCY
WAKA KOTAHI

WE CAN PROCESS ALL YOUR

CHANGE OF OWNERSHIPS

VEHICLE EXEMPTIONS

CANCELATION OF REGISTRATION

CHANGE OF HUBOMETER

REGISTRATIONS

ROAD USER CHARGES

HOURS

Monday to Friday

8.00am – 5.00pm