



# WESTERN Wanderer

Tuatapere | Clifden | Orawia | Blackmount | Monowai | Colac Bay | Orepuki

Cover Photo: Princess Mountains by Joan Egerton

Issue 249

*At a glance ... what events are on this month?*

**OCTOBER 2022**

MONDAY	TUESDAY	WEDNESDAY	THURSDAY	FRIDAY	SATURDAY	SUNDAY
					1 Tuatapere Community Market The Shed at the Well 10-1pm	2 Tuatapere Domain Board Committee AGM Domain Rooms 10:30am
3	4	5	6	7 Community Strength & Balance Class Orepuki Community Hall, 10-11am	8 Voting closes for SDC Local Body Elections 12 Noon	9
10	11	12 Community Trust South's Community Visit to Tuatapere & Riverton	13 Humpridge Track Great Walk Project Q&A Session with DOC WTCC 6-8pm	14	15 Second Hand PopUp Shop MARKET DAY 10-2pm TPC Main Rd  Live Band Tui Base Camp	16  Out West Tui TRYathlon 10:30am start Tuatapere Community Pool
17	18	19	20  Deadline for WW NOV Issue content	21	22	23
24	25	26	27	28 The Eddie Low Show featuring Kevin Greaves 7:30pm WTCC	29 Boundary Creek Art Gallery & Studio OPENING 10am	30 Borland Lodge Annual Meeting 11:30am   50 Year Celebration 1:30pm Halloween Maze WTCC Sunday 3-6pm 
31 Syd Slee Charitable Trust Applications close		Coming up ...	HVP Camp Quiz Tui Base Camp 7pm	Tuatapere Highland Piping & Dancing Society Dinner & Dance - 65 Years! November 5th Tuatapere RSA Hall 7pm til late!	Waiau A&P Show 11 February 2023 Tuatapere Domain	

Special thanks to



**SEE INSIDE FOR MORE DETAILS!**  
Want your event here? Let us know at  
[yourwesternwanderer@gmail.com](mailto:yourwesternwanderer@gmail.com)

## COMMUNITY NOTICES & EVENTS

### HANDY PHONE NUMBERS

#### EMERGENCY

POLICE /FIRE/AMBULANCE: **111**



MEDICAL CENTRE: (03) 2266 123

TUATAPERE POLICE STATION:  
(03) 2269 020

TUATAPERE COMMUNITY WORKER:  
027 757 5983

HAUROKO VALLEY SCHOOL OFFICE:  
(03) 2266 753

WAI AU AREA SCHOOL OFFICE:  
(03) 2266 285

TUATAPERE CEMETERY TRUST:  
(03) 2266 065

CHAMBERS SERVICE STATION:  
(03) 2266 654

TUATAPERE SERVICE STATION:  
(03) 2266 475

TUATAPERE FOUR SQUARE:  
(03) 2266 898

TUATAPERE OUTDOORS & HARDWARE:  
(03) 2266 363



— EST 2022 —  
ART GALLERY & STUDIO

WILL BE OPENING ON

SATURDAY **29** OCTOBER

10am

OPENING EXHIBITION  
FEATURING ARTWORKS BY  
KAREN FRIEND

WE LOOK FORWARD TO SEEING  
YOU!

3A ORAWIA ROAD, TUATAPERE

### TUATAPERE HIGHLAND PIPING & DANCING SOCIETY

Invites you to celebrate



**65 YEARS**  
of competitions



### DINNER & DANCE

Tuatapere RSA Hall  
November 5th, 7pm til late

Tickets \$50pp

The Yardmen performing live music  
Courtesy car available  
Cash Bar

For tickets contact Lisa 0273614474  
or lisa.mccracken.92@gmail.com

### Riverton & Tuatapere Community Visit

Looking for funding for a community project?  
Not sure where to start and have a few questions?

- Make a time to meet and chat with
- o Dianne Williams, Community Trust South and
  - o Danette Whakamoe-Pikia, Dept of Internal Affairs

**Wednesday 12 October 2022**

EMAIL: dianne@communitytrustsouth.nz

PHONE: 0800 500 185



Voting for this year's elections opened on  
Friday 16 September 2022.

If you are enrolled to vote, your  
voting papers should have arrived  
via mail. **Voting closes at 12 noon on  
Saturday 8 October 2022.**





## WAI AU SWIMMING CLUB

The Waiau Swimming Club will start Term 4, Week 1.

We are going to trial two sessions for Term 4.

If you would like to swim on **Tuesdays** please turn up at **3:30pm, 18th October** at the pool.

If you would like to swim on **Thursdays** please turn up at **3:30pm, 20th October** at the pool.

One on one will be a Thursday night only.

We look forward to seeing you all. All welcome!

## THE SAUSAGE STORY

Over 100 years ago Aitken & Young Family Butchers established a shop supplying meat and smallgoods to the Tuatapere region.

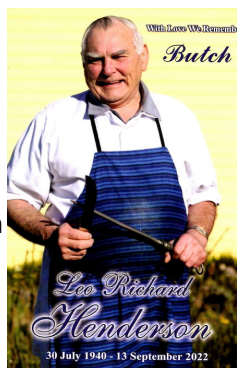
In 1985 Leo Henderson (The Sausage Guru) started producing top quality sausages to his own recipe.

In 1989 these sausages were voted the best sausage in Southland by public radio vote (gaining 73% of the Southland vote) and Tuatapere was then known as "The Sausage Capital". At the peak of production up to one tonne of sausages were produced weekly.

The famous Tuatapere sausages are still handmade to Leo's secret recipe with high grade Southland beef and mutton in original hog casings.

Sadly, Leo Henderson passed away on Tuesday, 13 September 2022.

Our sincere condolences to all of Leo's family and friends. R.I.P Leo.



## Max's Lawn Mowing Services

### Availability

Weekdays 3pm til dark  
Weekends 9am til dark

Prices depend on size/time spent doing the lawn

Contact Loretta (my mum)

**027 462 9527**

For the Tuatapere area



## COMMUNITY NOTICES & EVENTS

PLEASE HAVE YOUR ARTICLES, NOTICES, OR  
UPDATED ADVERTS FOR THE  
WESTERN WANDERER SENT IN BY

**20th of OCTOBER**  
**(for the November Issue)**

OREPUKI COMMUNITY PROMOTIONS  
GROUP PRESENTS



## COMMUNITY STRENGTH & BALANCE CLASS

A FALLS PREVENTION CLASS  
FOR THOSE LOOKING TO  
IMPROVE THEIR BALANCE AND  
MOBILITY, INCLUDING LOW  
IMPACT STRENGTH AND  
BALANCE EXERCISES.

WHERE: OREPUKI COMMUNITY HALL

WHEN: 10am - 11am  
EVERY SECOND FRIDAY OF THE MONTH

COST: GOLD COIN

ENJOY A CHAT & A HOT CUPPA AFTER CLASS

CONTACT/LEADER: KATHRYN MENPES  
EMAIL: OREPUKIPROMOTIONS@GMAIL.COM  
PHONE: 021 0811 6603

**LIVE STRONGER  
FOR LONGER**

PREVENT FALLS & FRACTURES



# CWA

[https://ehive.com/collections/  
202139/central-western-  
murihiku-southland-archive](https://ehive.com/collections/202139/central-western-murihiku-southland-archive)

## Central & Western Archive



If you have photos or records of the  
district you can contribute for  
digitisation/sharing,  
please contact us on the  
following email:

CentralAndWesternArchive@gmail.com  
or mobile phone: 027 211 4675

## TUATAPERE AMBULANCE

### Did YOU Know?

The Tuatapere Ambulance is a funded service by the Tuatapere Lions Club, for the residents of Tuatapere & Districts.

Should you receive an account for this service from St John, please forward it immediately to:

**The Treasurer**

**Tuatapere Lions Club**

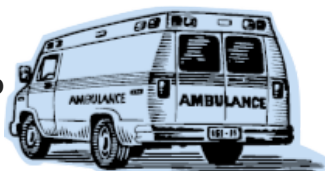
**PO Box 47**

**Tuatapere**

Sometimes we experience difficulty in receiving the invoices for YOUR trip - so PLEASE do forward them on to us.

Thank you!

**Tuatapere Lions Club Charitable Trust  
Ambulance Committee**



## COMMUNITY NOTICEBOARD

### BORLAND LODGE AGM & 50 YEAR CELEBRATION

The Borland Lodge 2022 Annual Meeting will be held on Sunday 30th October, 11.30am, at Borland Lodge. All welcome.

Borland Lodge will be celebrating 50 years of 'operation' at a function, Sunday 30th October 2022 at 1.30pm. Please come and 'join' the occasion which will have a 'light' programme - a tour of the facilities and afternoon tea. RSVP to the Secretary by Friday 14 October. [davannmc@outlook.com](mailto:davannmc@outlook.com) or phone 0274 380 360

### SYD SLEE CHARITABLE TRUST

Applications for the 2022 funding round will open on 1st October and close on 31 October 2022.

An application form and guide sheet can be requested by emailing [ssctrust17@gmail.com](mailto:ssctrust17@gmail.com) or by phoning Nicky Baker on 027 643 5880

### OREPUKI YOGA CLASSES

Held at the Orepuki Community Hall.

Wed 5:30-6:30pm Vinyasa Yoga

Wed 6:45-7:45pm Gentle/Beginners Yoga

Fri 5:45-6:45am Yin/Vinyasa Yoga

For info and registration contact:  
Ini at [inigunnyoga@gmail.com](mailto:inigunnyoga@gmail.com)

### WESTERN SOUTHLAND HEALTH SHUTTLE

The Western Southland Health Shuttle Service travels from Otautau, Ohai, Nightcaps, Tuatapere, Riverton - covering all of Western Southland. We also connect with the Invercargill-Dunedin shuttle.

The Western Southland Health Shuttle operates Monday - Friday (excluding Public Holidays).

Bookings are required by 3pm the day prior to transport.

**Ph: 0800 103 046 to book.**

Please book as soon as you receive your appointment.

### TUATAPERE VOLUNTEER FIRE BRIGADE

We're on the lookout for members to join this rewarding organization. We are looking for persons who are, ideally, available throughout the day.

If you think that you would like to try this (sometimes lifelong) commitment, then please feel free to come and try it!

We train on Tuesday nights at 7:30pm during daylight saving and 7pm through the winter months.

We look forward to meeting with you.



### TUATAPERE COMMUNITY MARKET

First Saturday of the month. 10am - 1pm

In the Shed at The Well.

Please text 027 297 4767 to book a \$5 table

### HERITAGE TREES ORCHARD

Robyn Guyton arrived on Sunday and starting pruning our orchard. We planted another 7 trees, so the Heritage Tree Orchard now has around 40 trees - Apples, Plums and Pears. It is looking very neat and thanks to the team that keeps the grass mowed.



## COMMUNITY NOTICEBOARD

### WANTED BY THE POP UP SHOP

Linen - Children's Toys - Household Items  
- Jigsaws - Children's Shoes -

Can you help with any of the above for our customers?

Many, many thanks for your support of the shop.

Contact Carol Diack 021 110 1835

### POP UP SHOP

**Quality second hand goods  
Affordable prices**

#### OPEN

**Friday 2pm to 4pm**

**Saturday 10am to 2pm**

Tuatapere Presbyterian Church Hall, Main Road,  
Tuatapere. Enjoy a cuppa and a chat while there.

TOYS, LINEN, HOUSEHOLD ITEMS, BOOKS,  
SHOES, CLOTHING AND MORE.

*CHECK OUT MY WEEKLY FACEBOOK POST.*

**Donations of items always gratefully received.  
Thank you for helping us help the community.  
Drop off at the church or for other options  
contact me. Carol Diack 021 110 1835**

### MARKET DAY

**Stalls of craft and other goods**

**Every 3<sup>rd</sup> Saturday of the month.**

**Next market day 15th October.**

**From 10am to 2pm**

Held at Tuatapere Presbyterian Church, Main Road,  
Tuatapere.

*Vegetable seedlings/plants/woodwork/ preserves/  
essential oil products/greeting cards/wheatbags/  
knitting/and more.*

***Our usual great stallholders and some new ones.  
Check out my Facebook post of that week.***

To book a table or any queries please phone or text  
**Carol Diack 021 110 1835**

**Get your car washed, dried and windows cleaned  
Price arranged on request!**

Contact: Rex Hibbs Flat 1/26 Orawia Rd, Tuatapere

## NEED A JP?



The following Justices  
are available  
by appointment:

#### Tuatapere

Keri Potter 027 526 3137

#### Te Waewae Bay

Shirley Whyte 027 504 5220

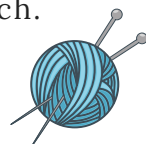
#### Blackmount

Nicky Baker 0276435880

### WESTERN SOUTHLAND WOOLCRAFT GROUP



Spinning, Felt, Weaving, Knitting,  
Crochet. Other crafts welcome!  
1st & 3rd Wednesday of the month.  
10am - 3pm. \$3. BYO Lunch.  
Scout Den, Erskine Street.  
For details please contact:  
**Helen Todd 022 103 9327**



### TUATAPERE & DISTRICTS LIONS CLUB PROJECT



#### SUPER DIRT

Super dirt bags are now  
weighed so more in each bag!  
**\$8 per bag - ready for your garden!**

Super dirt can be collected from:  
Cracks Yard, Grove Burn Road,  
in the mornings Monday to Friday.  
Weekends by arrangement.

Delivery by arrangement - (but not  
guaranteed)

Phone Trevor (03) 225 5864 or  
Stephen (03) 226 6817



### TUATAPERE COMMUNITY WORKER

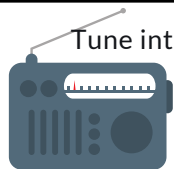
Room 5 Medical Centre  
69A Orawia Road

Monday - Thursday 10am to 3pm

Keri Potter 027 757 5983

Email: [tcworker@xtra.co.nz](mailto:tcworker@xtra.co.nz)





Tune into Tuatapere's very own Radio Station

**88.2 FM - Tui FM!**

Hits of the 80's & 90's and  
today's current music!

## SALVATION ARMY FAMILY STORE TRUCK

The Salvation Army Family Store Truck will come out and collect large amounts of your pre-loved furniture & other household items. This service is free. Please call the store to organise your visit on **03 214 5380**



## COUNTRY CORNER CRAFTS

Come in and browse and see what we have to offer. Hats, scarves, children's knitwear, cards, jewellery, woodware, sewing, jams, pickles, sauces, etc.

Tuatapere souvenirs "On Natures Edge" logo are always available.

Is anyone interested in joining to sell their crafts? You are more than welcome to contact us.

Want to volunteer your time & work in the Craft Centre - let us know! It's a great way to meet people! If you wish to view the shop and it is closed, please ring the ladies below to open it for you.

**Louise Greber (03) 668 6001** or  
**Lyla Sherriff (03) 226 6187**

## TUATAPERE ENVELOPES

Envelopes printed with the "Tuatapere on Natures Edge" Logo can be purchased at Country Corner Craft Shop 1A Orawia Road. **Cost \$3.00 per 10**



## SOUTHLAND COMMUNITY LAW CENTRE

Free legal information and advice for the community of Southland. 2nd Floor, Cue Building, 33 Don Street, Invercargill. Phone **(03) 214 3180**

Freephone: 0800 550 800  
(outside Invercargill city only)



## COMMUNITY NOTICEBOARD

### INDOOR BOWLS

We have practice nights on Mondays 7.30pm with competition games Thursdays 7.30pm at the Waiau Town & Country Club.

Young players are welcome to join with training/coaching provided.

If you'd like to join or know any who is keen ... please email [jessejculbertson@icloud.com](mailto:jessejculbertson@icloud.com)

### CHESS!

Who is keen for a game or to learn?

**Sundays 3-5pm at Waiau Town & Country Club**

Gold coin donation appreciated to help pay for the sets. See you Sundays, just turn up, no need to register or anything!



### WAIAU SQUASH 2022

Squash is a great way to keep fit over the winter, and socialise with some like-minded people!

Family/social keys are also available.

We are always looking for new members so please contact Rebecca or Sam if you are interested.

Contact: Sam Egerton **027 250 5477**

Rebecca Robertson **027 424 6129**



### TUATAPERE PRESBYTERIAN CHURCH

Has it been a trying week? Is life a bit of a struggle? Have things not quite gone your way?

Need somewhere to reflect and rest your mind?

Need to 'take a breath'?

How about joining with us for a time of quiet fellowship on **Sundays at 10.30 am** at the **Tuatapere Presbyterian Church, Main Street, Tuatapere**

A time to be, to reflect and refresh. There is a children's time where they can be in their own space too. All are welcome to join us.

Make new friendships, create new moments.

Need to know more? Phone or message

**6 Lynley on 027 297 4767**



## COMMUNITY NOTICEBOARD

### TUATAPERE PLAYGROUP

Tuatapere Playgroup welcomes all 0-5 year olds & their parents/caregivers to come join the fun!



**Friday mornings from 9am to 12pm.** Bring a packed morning tea and drink bottle.

We provide a warm, friendly atmosphere for children to form bonds and learn alongside each other and a place for parents to connect.

For more info message our Facebook page or contact Gemma on **022 040 3368**

You'll find us at **23B Orawia Road, Tuatapere**

### CLIFDEN PLAYGROUP

45 Otahu Eastern Bush Road. Join our FB Group to check if it's on: **Wednesday (during School Term) 9:30am - 12:30pm.** All mothers and children welcome. Bring packed lunchbox for your child's morning tea. Contact: Sarah **027 699 5234**

### TUATAPERE TOY LIBRARY

Tuatapere Toy Library has been a toy swap/hire service provided to the young families of Tuatapere and surrounding districts since 1989.



The purpose is to create opportunities for the little people of our community to have accessibility to toys. A small contribution of an annual membership allows families to join the group and have access to the toys. For more information or questions please text or ring **Nathalie Pahl on 027 4759 075**

### SENIOR CITIZENS

Senior Citizens is a group of over 50s that meet every **Friday afternoon at 1pm** at the rooms behind the RSA Hall. We are always looking for new members so if you would like a fun afternoon playing bowls, cards or just catching up with friends, come and join the group.

**If you need a ride - we can pick you up!**

Contact: Olive Bennett Ph **(03) 2266 477** or  
Alison Bennett Ph **027 224 2724**

### TUATAPERE HEALTH & GIFT SHOP

(part of Riverton Pharmacy)

**69a Orawia Road**

(beside the Medical Centre)

Ph: **(03) 226 6999**

**12:00pm - 5:30pm Mon-Fri**

Good selection of Vitamins, Giftware & Over-the-counter healthcare

First prescription drop-off from 1:30pm

Second prescription drop-off 4:30pm

### WAIAU MEMORIAL LIBRARY

**Library Hours: Fridays**

10:00am - 11:30am

2:30pm - 4:00pm

7:00pm - 8:00pm



### ★ Firewood For Sale ★



The Waiau Star Golden Oldies are fundraising for a trip to Cambridge in 2023 to play Leamington in memory of the late **Bill Wayne Cook.**



- Mixed Firewood - Macrocarpa, Old Man's Pine + Bluegum.
- \$70 per metre - 10 metre minimum order
- Ready for pick up at the start of July

**Contact Stump on 021 525 227**

ESSENTIAL OILS 100% PURE GIFTS OF NATURE  
Florals Trees Plants Herbs Spices Citrus

To Learn More, phone or text your local Wellness Advocate  
Carol Erskine Papatotara 0274 599 654





\* 13 Tonne Digger \* 5.5 Tonne Digger \* 2.7 Tonne Digger- dry hire or operated  
 \* Tip Truck \* Bob Cat \* Augers \* Post Driver \* Tree Saw & Hedge Trimmer  
 \* Tree Trimming \* Post Driving \* Fencing \* Cleaning of Wintering Sheds \* Site Clearance \* Cartage \* Gravelling \* Lane Maintenance \* General Earthworks

For all enquiries and bookings please contact Lance or Alice Harris  
 Lance: 027 304 3714  
 Alice: 027 270 0363  
 Email: lanceharris533@gmail.com  
 Check us out on facebook- Harry's Machines

## Shearing magazine Des Williams (editor)

Tel 07 839 2891 : Mob 0274 833 465

Email : shearingmag@xtra.co.nz

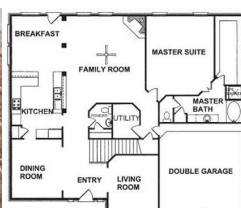
Member NZ Guild of Agricultural Journalists and Communicators (Inc)

**LAST SIDE PUBLISHING LTD**  
 PO Box 102, Hamilton 3240, New Zealand

## PAUL ANDERSON BUILDER

AVAILABLE FOR ALL YOUR  
 BUILDING REQUIREMENTS.

NO JOB TOO SMALL.  
 COMPETITIVE RATES.  
 REFERENCES AVAILABLE!



**Mobile: 027 890 3602**  
 thetakis@outlook.com

## IN & AROUND THE COMMUNITY

### WAIAU COMMUNITY THEATRE

*Anne Horrell, President*

On behalf of the Waiau Community Theatre team I would like to express huge thanks to those of you, in our community, who were able to attend this year's Show-which was held on the 9th and 10th of September. On both nights the audiences were amazing! We had a lot of fun in the preparation and the performance of the short plays and the singing bracket. We thoroughly enjoyed being together again after the break, due to Covid 19, and it was wonderful being able to welcome new members.

We are very happy to welcome anyone who would like to have a go at acting, singing or helping out behind the scenes. Please make contact if you wish to be involved next year! I already have a list of some people keen to be included in the future. We are a happy team! Although we don't expect to win Oscars we certainly intend to enjoy ourselves!

I would like to extend our sincere gratitude to Waiau Area School for the use of the school for practices and performances and the lovely ladies in the school office who so willingly looked after our ticket sales. Thank you also to the SPOT team (Suicide Prevention Outreach Tuatapere) for helping out with the preparation and serving of supper.

We are looking forward to 'doing it all again' on the Waiau Area School stage in 2023 and we look forward to seeing you there!

*Save the date!*





## CANCER SOCIETY

### Isobell Green, Tuatapere Branch Volunteer

A huge **thank you** to everyone who gave to this amazing cause this year!

We had an Easter Raffle: 1st - Debbie Fowle  
2nd - Des Chambers  
3rd - Tui Base Camp

### Tuatapere Quiz

Thanks to Tui Base Camp and to Lynette & Averil for running the quiz.

### Auction Donations:

Tuatapere Lions - Trailer load of firewood  
Judy Bevin - Sponges  
Lynette Chambers - Carrot cakes  
Tuatapere Four Square - Large hamper  
Duke Diack - Potatoes  
Simon & Julie - Shearing hoodie & singlet  
Diane Jarvie - Air fryer

**Raised: \$1920.15**

### Orepuki Quiz

Thanks to Orepuki pub and to Lynley & Carmen for running the quiz.

### Auction Donations:

Tuatapere Lions - Trailer load of firewood  
Judy Bevin - Sponges  
Lynette Chambers - Cakes  
Alistair McCracken - Whitebait

**Raised: \$1480.00**

### Fresh Daffodils

Thanks again for your orders. 20 bunches sold.

**Raised: \$340.00**

### Daffodil Street Stall

Thanks so much for the lovely baking and other donations. \$100 Scratchy Board won by D. Collinson, Bluecliffs.

**Raised: \$180.00**



**Total Raised for 2022**

**\$4550.15**



We were praised for our good effort at our revenue meeting so thanks again everyone!

**TODD & CO**  
REALTY

*Melanie* - your local salesperson

I am proud to be serving my local area, helping people from all walks of life meet their property goals.

After some great sales so far in 2022, I have a number of buyers still looking.

If you would consider selling, give me a call!

**Mel Muldrew**

021 068 5262

melanie.m@toddco.nz

**TODDCO.NZ**

William Todd & Co Ltd, Licensed (REAA 2008)



**Choose Local. Choose Melanie.**  
**Serving Southland since 1865.**

### MOUNTAINS EDGE CABINS MONOWAI



Hunting, Fishing, Mountain Biking,  
Kayaking & Tramping  
Cabin Accommodation

**12 Cabins**  
**Double and Single Available**  
**\$35.00 per person per night**

Eftpos available

Full Kitchen Facilities, Showers, Toilets, Playground  
& the Tennis Courts right across the road!

We are 'pet friendly'

[www.mountainedgecabins.com](http://www.mountainedgecabins.com)

Email: [mountainedgecabins@gmail.com](mailto:mountainedgecabins@gmail.com)

75 Turbine Drive, Monowai. Ph. 03 225 8267

## WESTERN ELECTRICAL

2008 LTD

Electrical Solutions

**Domestic | Industrial | Commercial**

**Quality Service at Competitive Prices**

- New Builds, Rewiring & Alterations
- Dairy Shed, Farm & Industrial Maintenance
- Hotwater Element Replacement
- A/H Call Out Service Provided



**Ph 03 225 8974 / 027 439 3787**

**Fax 03 225 8973**

## IN & AROUND THE COMMUNITY

### COMMUNITY SERVICE AWARD FOR TONY MCDONALD

Long-serving St John Ambulance volunteer Tony McDonald received a Community Service Award in Tuatapere on Monday night at the Waiau Town & Country Club.

The award was made by the Tuatapere Te Waewae Community Board along with Southland District Council, following Tony's nomination by members of the community.

Tony has been a St John volunteer ambulance officer in the Tuatapere area for more than 20 years, working several days a week but always prepared to respond at any time when there is a need in his community.

His nomination says: "Tony works quietly behind the scenes to help our community and his selfless approach is valued by all."

Fellow Tuatapere St John crew member Sandy MacGillivray said Tony had unselfishly given his time to assist those in need in the community, at any time of the day or night. "Your commitment to your community by helping those in their time of need has been amazing."

Sandy, along with other speakers, thanked Tony's wife Bev for her contribution and support. "None of us would be able to commit to being a volunteer without the support of our families to help make this happen. As a volunteer member of St John, you do not expect any recognition for the work you do," she said. "Tony, you have given freely of your time and energy to both the community and other crew members. Today is an opportunity for your community to say thank you for all that you do. "You deserve it."



**SOUTHERN SPARX**  
ELECTRICAL

**CLAYTON PRIME**  
*Registered Electrician*

📞 021 951 365  
✉️ southernsparx@gmail.com

For bookings contact  
**Rochelle** 📞 021 588 257

**DOMESTIC | COMMERCIAL | INDUSTRIAL**



**MR STEEL**  
TUATAPERE  
**PH: 027 276 6816**  
MALCOLM


**For all your engineering,  
steel fabrication and repair needs!**

**FORDE WINDERS SHEARING LTD**

Available for all new and existing clients

For all your shearing and  
crutching requirements

Please phone  
Darin Forde 027 229 7760  
Jeremy Winders 027 231 4299



**BEN MCMASTER  
BUILDING**

Ph: 027 202 7955  
benmcmaster@live.com

- Licensed Building Practitioner
- Sheds, renovations & new homes
- Based in Western Southland

*You dream it, we'll build it*





# WAI AU HEALTH TRUST – October 2022

## Medical Centre

### **MASK WEARING:**

**As you will be aware mask wearing continues to be mandatory in healthcare facilities-please ensure you have your mask in place before entering our building. Wearing your mask protects yourself and our staff against viruses. We appreciate your understanding.**

### **Vaccinations**

Please phone to make your appointments for any vaccine requirements. Covid vaccinations can be also booked via the Book my Vaccine website. We continue to offer supervised RAT's and PCR's, should you require any information regarding these please contact one of Practice Nurses.

**Liquid Nitrogen Clinic** is on Wednesday 26<sup>th</sup> October – please phone and make an appointment.

### **MEALS ON WHEELS:**

**Waiau Health Trust provide this service to our community Monday-Friday at 12.00 pm. This much needed and appreciated service is made possible through the continued support of volunteers who deliver the meals. If you can spare approximately 2 days per month for 45 minutes please phone our receptionist.**

### **AFTER HOURS CARE**

**Tuatapere Medical continue to offer an after-hours service. If you are unwell and require Medical Care or advice outside of our normal business hours, call 03 2266123 you will automatically be connected to our afterhours Triage service. The qualified person will discuss your concerns and advise you of the process to be followed. If deemed, you need care they will contact our Practitioner who will then contact you direct.**

### **Homebased Maternity Care:**

**If you are pregnant or a new mum these services would be of great benefit. This care is available for you, we assist with anything for yourself or your new baby. Please contact me to discuss and ask any questions regarding the assistance we can give you as a mum of a newborn baby.**

**Should you have any questions or concerns I look forward to hearing from you.**

Kind Regards

Jo Sanford (Manager)

Cell: 0272356190



**Waiau Health Trust**  
**69a Orawia Road, Tuatapere**  
**Approved Registered ACC Provider**  
**Monday to Friday**  
**9:00am – 4:30pm**  
**Ph.: 2266123**

*Practitioner Hours*  
*Amanda McCracken (NP) – every*  
*weekday*

*Sheryl Eden (NP –every Monday &*  
*Tuesday)*

*Murray Allen (GP) -Thursdays*

***Physiotherapist***  
*Tuesdays & Thursdays*  
*Phone for an appointment*

*Podiatrist*  
*Visits regularly –*  
*Phone for an appointment*

*Warts/Minor Skin Lesions*  
*Liquid Nitrogen treatment available*  
*Phone for an appointment*

*Homebased Maternity Care*  
*We are offering this service*  
*in the patient's home.*  
*Please contact Jo Sanford*  
*on 2266123 for enquiries.*

*Day Activities Programme for*  
*the Elderly*  
*Every Tuesday & Wednesday*  
*Please phone for further information.*

*District Nursing*  
*Available as required by referral*

*Shirley Whyte*  
Your local realstate specialist living & working in Western Southland  
now also an Accredited Justice of the Peace.



*for:*   
Friendly service, reliability, sound local knowledge  
in Western Southland, Te Anau & Stewart Island  
All enquires welcome - all calls answered

**Harcourts**  M 027 504 52200 O 03 214 4080  
E shirley@harcourtsinv.co.nz W www.harcourts.co.nz

Holmwood Real Estate Ltd Licensed Agent REAA 2008

**Kia ora, Ni hao, Kamusta**  
Western Wanderer Readers



**Hauroko**  
VALLEY PRIMARY SCHOOL

## Hauroko Happenings

As Term 3 draws to a close, we continue to be super busy with classroom programmes. This is also a busy time of year for our farming families. Hopefully, Spring brings grass growth and warmer weather conditions for stock and farm work.

Our Waiau Rivercare Group tamariki are excited to be nominated as a finalist in Environment Southland's Community Awards. We look forward to being hosts to share our knowledge with some very special guest visitors.

### Kowhai Superstars

Happy School Days to Archie who joins siblings Nelly and Alfred. We also extend a warm welcome to Bear who joins Kowhai too. We look forward to getting to know your whanau.

Each week we focus on a letter. We create crafts with the letter, as well as focus on words that begin with the letter and work on correct letter formations.

### Mighty Matai

This week we were looking at teamwork skills. With the sun shining on our backs, we learned a new invasion game. Matai had to use passing, catching, and great agility to play "End Game." The children enjoyed playing this new game and were able to identify areas to work on for next time. Like passing the ball more rather than just running with it.

"Precision is using numbers, names of people and places, and dates and times in our writing. We use this to be more interesting and we get a clear picture. You know exactly what is happening". By Cohen and Layla



Rural Lifestyle Residential  
**For all your Shearing Services.**



**No mob too big  
No mob too small  
We do it all!**

**Contact Ricky Skipper to book in now  
027 351 2620**

Specialising in  
Dairy Conversions  
Rural Fencing  
Post & Rail



**H Gill Fencing,**  
Eastern Bush  
Phone 021 225 5489  
After Hours 03 225 5488  
Email hamish@hgillfencing.co.nz



**accelerate**  
PHYSIOTHERAPY

office@acceleratephysio.co.nz  
60 Deveron Street, Invercargill  
(off street parking)  
**0800 291 475**

Accelerate is a gentle form of exercise, effective in providing long term solutions after an injury, especially low back pain.



We have interests in:

- Neck & shoulder injuries
- Balance & Dizziness
- Workplace Injuries / Ergonomic Onsite
- Work Evaluations & Educations
- Pilates
- Spinal/Bac
- Sporting In
- Running, C
- Men & Wo

**Andrea Robertson**  
BPHYT, PG Cert ACUP

**Andrea Murray**  
Dip PHYT Dip M.T.

**Joel Bar**  
BPHYT, BE

**www.acceleratephysio.co.nz**

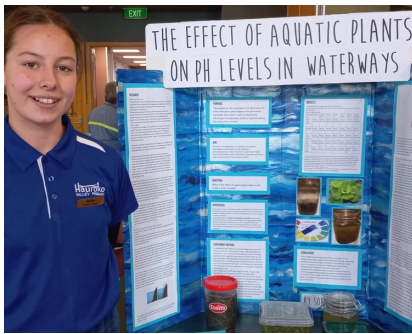
 

# Hauroko Happenings

## Terrific Team Totara

We have been busy in Team Totara learning about fractions and ratios, starting our athletics training and how to write with precision - names, places, dates, distances, and quantities. These help us to paint a clear picture for our readers.

We have had really creative and precise weather forecasts for next week. Our reporters in training have been on the scene of some incredible weather events such as rain, hail, and snow. As well as some more extreme weather! Blizzards, tornados, hurricanes, thunderstorms with ball lightning, and the extremely rare Dinado!



## Radical Rata

At the Northern Western Area, Speech Finals Lucy & Harry won their respective year-level sections. This is a huge achievement and possibly now a place etched in history, a first-as-a-sibling combination, one of each on each cup!

NZAS Southland Science Fair prize giving rewarded the following students for stellar Science Investigations. Bronze - "Does Sight Effect Taste?" by Paetyn & Sienna.

Commendation - "Does Mould Effect Acidity?" by Elly. Bronze - "Which Household Vitamin Makes Rye Grass Grow?" by Katie & Maddy. Sophie G was awarded Silver and Two Special Prizes for her innovation and thoroughness in the completion of her project - "What is the Effect of Aquatic Plants On pH Levels in Waterways?" Well done!

Check out the photos of a fab day around the Waik. The Year 7&8's walked from Rarakau to the A-frame hut as a practice walk for camp. Great fun was had by all! Thanks to our wonderful parent helpers for a fabulous day.

Nga mihi, Julia on behalf of our Hauroko Valley team.

**We look forward to sharing more of our learning adventures with our Western Wanderer whānau soon.**



## Registered ELECTRICIAN

For all electrical work  
*No job to small*  
A/Hours service available


**Jay Brownlee**  
8 Carlyle Street, Tuatapere 9620  
A/H 03 226 6673  
Mob 027 4965 863  
sparkieintuatapere@gmail.com

For all your Accounting and Tax Solutions

Ask for Janice or Trevor England

 **03 2266110**

Aparima Accounting Ltd  
57 Main Road Tuatapere

  
**CANTERBURY CARS**  
**4WD Specialists**

For all your vehicle requirements

Cars, utes, 4WDs, vans

Finance available

Contact: Murray Dowling  
027 556 2655

Visit our website  
[www.canterburycars4x4.co.nz](http://www.canterburycars4x4.co.nz)





**Rabco Ag Ltd** – 021 362 766 – [admin@rabco.nz](mailto:admin@rabco.nz)  
Agricultural Contracting Specialists - Western Southland



**Full silage  
& baling  
service**



**Cultivation – including Direct Drill & Precision Drill**



**Effluent – Excavators - Hedgetrimming**





## Jalapeno Three Cheese Scones

*For those school or work lunch boxes - this scone recipe is quick to make resulting in a soft, fluffy, super cheesy scone.*

### Ingredients

- 2 ½ cups self-raising flour
- 2 cups grated cheese
- 50g feta, crumbled
- ¼ cup shaved parmesan cheese
- 1 teaspoon paprika
- ¼ teaspoon salt
- 2 tablespoons chopped jalapenos
- 2 tablespoons chopped sundried tomatoes
- 2 cups unsweetened plain yoghurt



### Instructions

Preheat the oven to 200°C.

Line a baking tray with baking paper.

Mix the self-raising flour, cheeses, paprika, salt together in a large bowl.

Add chopped jalapenos and sun-dried tomatoes.

Fold through the yoghurt, so a soft dough is formed.

Turn out onto a lightly floured surface.

Roll out or press into a slab about 2.5cm thick, and cut the slab down the middle, then cut each block into five.

Place onto a baking tray.

Bake for 18-20 minutes, let cool slightly and enjoy.

## WAIIAU VALLEY SHEARING LTD



**Simon de Vries**  
**Julie Heaps**

**027 840 9867**  
**03 226 6212**

### CHAINSAW SHARPENING

All chainsaw chain sizes precisely sharpened and rakers taken down accordingly, guaranteed results

**Chain only \$10 Taken Off & Refitted \$13**

Please phone **027 308 2501**

### WANTED TO BUY

Possum Fur, Hard deer,  
Antler, Deer Velvet.

Phone Leith 027 496 3721

**SOUTHLIFE**  
**Community**  
**CHURCH**

*Steve & Sharon*  
are Pastors  
and we are an area church

We believe in Community and endeavour to show this the best we can by the way we care and serve!

MINISTRIES  
"BRIDGE CHRISTIAN MINISTRIES UGANDA"

We warmly invite you to come along to one of our services.  
It would be great to see you

**Sunday Service**  
10am Truro St, Orepuki



## FLAGTRAX STREET FLAG DESIGN COMPETITION

We invite and encourage our Western Wanderer readers to submit a Flagtrax Street Flag design for our set of Community Flags, sharing what Tuatapere and/or it's surrounding districts means to you, incorporating kaitiakitanga/stewardship values and creative flair.

### IMPORTANT: FLAG DESIGN DETAILS

- ☐ The design must be completed on the official Flagtrax Street Flag template entry form (A4) but it can be enlarged to A3.
- ☐ Your design needs to reflect the essence of our Tuatapere and/or surrounding Districts community.
- ☐ Your design must incorporate bright colours (to be clearly seen) and the design **MUST** fit as much of the flag template space as possible - with the main part in the centre of the flag. Please make sure that your design is the right way up! Note where the top of the flag and the bottom of flag is labelled.
- ☐ The Entrant Details must be filled in on the official Flagtrax Street Flags Template entry form.
- ☐ The competition is open to all ages 0-100+ years!
- ☐ All designs submitted become the property of the Tuatapere & Districts Promotions Inc, who will reserve the rights to use such works, including for promotional ventures which will include social media, and any other mediums as they deem appropriate and in keeping with the ethos of the Tuatapere Community - thank you.
- ☐ The winning design(s) will be used in a set of street flags positioned throughout Tuatapere on the Flagtrax poles.
- ☐ Entries can be dropped off at the **Waiau Area School office** or **Tuatapere Four Square Supermarket** or scanned and emailed to [thisistuatpere@gmail.com](mailto:thisistuatpere@gmail.com) by **Monday 1 November 2022**.
- ☐ Please contact Paula 027 434 6777 if you have any further queries regarding the Flagtrax Street Flags Design Competition.



FLAGTRAX STREET FLAG DESIGN COMPETITION - OFFICIAL TEMPLATE ENTRY FORM

Top of the flag

Bottom of the flag

ENTRANT DETAILS

NAME: \_\_\_\_\_ EMAIL ADDRESS: \_\_\_\_\_

CONTACT ADDRESS: \_\_\_\_\_ CONTACT NUMBER: \_\_\_\_\_

ECE/SCHOOL/OTHER: \_\_\_\_\_ AGE: \_\_\_\_\_

key

**Bleed lines**

Take artwork out to the edge of the bleed area. (Print Size)

**Trim**

In-house purposes only. (Includes any extra beyond the "Finished Size" if sewers need to hem and stitch etc).

**Finished Size**

This is the same as the Viewable Area.

**Safe Area**

Place all essential text and imagery inside the safe area.



# NO TRICKS, JUST TREATS. EERIE-SISTIBLE DEALS

<p><b>Not Stocked</b> \$1.99 EACH</p> <p>Clean Collective 5% 300ml 4pk bottle range</p>	<p><b>Not Stocked</b> EACH</p> <p>Jim Beam Gold; CC Premium 7% 330ml 6pk cans</p>	<p><b>\$21.99</b> EACH</p> <p>Tui Vodka Soda (ex bourbon) 7% 250ml 12pk can range</p>	<p><b>Not Stocked</b> EACH</p> <p>KGB (incl Guarana) 7% 250ml 12pk cans</p>	<p><b>\$23.99</b> EACH</p> <p>Jim Beam &amp; Cola; CC (incl zero) 10pk can ranges</p>	<p><b>Not Stocked</b> \$22.99 EACH</p> <p>Southern Comfort 375ml; PTR 330ml all 10pk cans</p>	<p><b>\$24.99</b> EACH</p> <p>Cruiser 5% 12pk bottle range</p>
<p><b>Not Stocked</b> \$24.99 EACH</p> <p>Good &amp; Great 10pk bottle range</p>	<p><b>\$26.99</b> EACH</p> <p>Long White 10pk bottle range</p>	<p><b>\$27.99</b> EACH</p> <p>Smirnoff Ice Double Black Guarana (incl Zero) 7% 250ml 12pk cans</p>	<p><b>Not Stocked</b> \$26.99 EACH</p> <p>Jack Daniel's &amp; Cola 12pk bottles</p>	<p><b>\$13.99</b> EACH</p> <p>Stoneleigh Marlborough; Lighter ranges</p>	<p><b>\$14.99</b> EACH</p> <p>Villa Maria Private Bin range (ex PN/Syrah)</p>	<p><b>\$15.99</b> EACH</p> <p>Penfolds Koonunga Hill (Cab Sauv, Shiraz)</p>
<p><b>Not Stocked</b> \$15.99 EACH</p> <p>Grant Burge 5th Generation Waipara Hills (ex reds) ranges</p>	<p><b>Not Stocked</b> \$15.99 EACH</p> <p>Taylors Estate Brown Brothers Prosecco (incl Ultra Low) ranges</p>	<p><b>Not Stocked</b> \$16.99 EACH</p> <p>19 Crimes (ex Cali Red) range</p>	<p><b>\$36.99</b> EACH</p> <p>Larios Original 1L Midori 700ml</p>	<p><b>\$40.99</b> EACH</p> <p>Gordon's &amp; Smirnoff 1L Orange; Sicilian Lemon 700ml</p>	<p><b>\$42.99</b> EACH</p> <p>Stolen Dark Rum Teachers 1Ltr; Stolen White &amp; Gold Rum (ex smoked) 700ml</p>	<p><b>\$45.99</b> EACH</p> <p>JB 1.125ml JB Devils Cut; JB Black 1L</p>
<p><b>\$46.99</b> EACH</p> <p>Absolut; Ballantines Beefeater 1L Beefeater 24 700ml</p>	<p><b>\$55.99</b> EACH</p> <p>Jameson 1L Jameson Black Barrel Olmeca Altos 700ml range</p>	<p><b>\$57.99</b> EACH</p> <p>Jack Daniel's 1L Woodford Reserve Gentleman Jack 700mls</p>	<p><b>\$58.99</b> EACH</p> <p>Malty 700ml range</p>	<p><b>\$58.99</b> EACH</p> <p>Mt Gay Eclipse 1L</p>	<p><b>\$59.99</b> EACH</p> <p>JB Double Oak 1L Haku Vodka; Roku Gin Ratu Rum range 700mls</p>	<p><b>\$69.99</b> EACH</p> <p>Johnnie Walker Black 1L</p>
<p><b>\$69.99</b> EACH</p> <p>Jim Beam 1.75L</p>	<p><b>Not Stocked</b> \$14.99 EACH</p> <p>Monteiths 6pk bottle &amp; can ranges (ex cider)</p>	<p><b>Not Stocked</b> \$14.99 EACH</p> <p>Rekorderlig Ultra (berry; passionfruit) 6pk can range</p>	<p><b>Not Stocked</b> \$10.99 EACH</p> <p>Pan Head (ex rat rod) 6pk cans &amp; bottles</p>	<p><b>\$18.99</b> EACH</p> <p>Kiwi Lager 330ml 15pk cans</p>	<p><b>Not Stocked</b> \$20.99 EACH</p> <p>Fortune Favours 6pk range</p>	<p><b>Not Stocked</b> \$20.99 EACH</p> <p>Kingfisher Sol 12pk bottles</p>
<p><b>Not Stocked</b> \$26.99 EACH</p> <p>Mac's 12pk can &amp; bottle range (incl cider)</p>	<p><b>\$26.99</b> EACH</p> <p>Peroni 12pk bottles</p>	<p><b>\$26.99</b> EACH</p> <p>Heineken 12pk bottles</p>	<p><b>\$27.99</b> EACH</p> <p>Tui; Export Gold; Extra Low Carb; DB Draught 15pk bottles</p>	<p><b>\$28.99</b> EACH</p> <p>Export 33 15pk bottles</p>	<p><b>\$33.99</b> EACH</p> <p>Haagen 24pk bottles</p>	<p><b>\$38.99</b> EACH</p> <p>Lion Red; Waikato Speights or Summit (ex ultra) 24pk bottles</p>
<p><b>\$39.99</b> EACH</p> <p>Speights Summit Ultra Low Carb 24pk bottles</p>	<p><b>Not Stocked</b> \$43.99 EACH</p> <p>Asahi 24pk bottles</p>	<p><b>\$43.99</b> EACH</p> <p>Steinlager 24pk 330ml bottles</p>				

Promotion period between 1/10/2022 to 31/10/2022. While stocks last. Promotion only available at participating stores. Please contact your local store to confirm whether they are participating in the promotion and check the pricing in-store prior to purchase. Online pricing will vary.



100% **NEW ZEALAND** OWNED AND OPERATED  
thirstyliquor.co.nz

FOLLOW US ON SOCIAL MEDIA

ASK ABOUT  
LOYALTY CARD  
BENEFITS &  
GIFT VOUCHERS





**George Harpur, SDC Councillor, Waiau Aparima Ward**

I pen this with a tinge of nostalgia as this is my final report after some eighteen years. It has been a pleasure to serve as your councillor for this period and I have enjoyed the interaction with many an elected member over these years and witnessed with serious concern the slow creeping paralysis that is crippling the effectiveness of the decision making of the regions Community Boards. The inability of the local population to tend and do local work in the gardening, lawn mowing, and other local beautification areas and small maintenance is exploding the cost of services. How indeed can it be cost effective to bring outside labour in to do local work regarding travel time, and many other factors? H&S, risk factor, traffic control etc will all be touted as the reason by management. However, with some major adjustments, this situation can be reversed should there be an inclination to do so.

By the time you read this, voting for new District Councillors, and various Community Boards will be near the closing date or closed. In advance I'd like to congratulate all the successful candidates and wish you all well for your future services and decisions - decisions that, at times, will not be in the interests of the people who voted you in. At times you will be required to make hard choices that are in the interests of the greater population and not always your local region. You will be required to deal with people that have a very different opinion than the governing body and did not vote or have no intention of volunteering for various chores in the regions. The satisfaction of serving your community far out weighs the negatives that periodically arise. To the general public, encourage your elected members to be strong and contest all ways to promote the towns and regions, assist them to collectively support local businesses as the people they employ will ultimately provide the employment base for the economic future of your community.

Before I sign off for the last time I would like to thank my wife June for her support over these years, and a big shout out to all the other partners of the Community Board members.

Cheers and Aroha to all.

**Phone: Anita Green 027 506 2418**  
Tuesday 9-5pm, Thursday 10-8pm, Friday 10-5pm - Appointments are encouraged.

## CHAMBERS REPAIR SERVICE

**45 Half Mile Road, Tuatapere**

**Ph: (03) 226 6654**

- 24 hour Self Service Fuel
- Full Mechanical Workshop
- NZ Post Centre
- Agents for Wide Span Garage



**2022 / 2023 Fishing Season  
Licences available now**

Children Under 12	Free	Junior	\$29.00
Adult	\$145.00	Loyal Snr	\$123.00
Local Area	\$116.00	Family	\$188.00

Other Licences include Day, Short Break, Long Break, Winter & Non Resident

**MTA Gift Vouchers Available**



**PASTURE METER READING THAT'S QUICKER AND EASIER, WITH AT THE GATE REPORTS**

- Specialist in quality pasture meter reading with advanced sensor technology
- Provide 200 measurements per second or 18,500 readings over a single 500m pass
- Provides a fully integrated electronic support system
- Provides a secure web-based storage of information with easy access
- Prompt generated feed wedges for rapid decision making and seasonal comparisons
- Generate reports at the gate, supplying valuable pasture cover data and comparable results every time
- Improve heath & increase animal hydration
- Enhance production & improve water quality
- Reduce bacterial/algae contamination of trough water

**CLEAN TROUGH WATER MEANS  
IMPROVED LIVESTOCK HEALTH**

Now 2 bikes available for pasture metering



**Brett George • P 027 351 3408**   
**E platemeterservices@gmail.com**



*Lynley McKerrow*

**Celebrant**  
Funeral and Marriage

P: 0272 974 767  
E: nanamac60@xtra.co.nz

*with care - with love - with dignity*



## Ratty Says ...

Waiau Memorial Library

I had plans, fun plans and I completely forgot to put them into action. Ooops. My bad. I was going to go on the BESTEST Adventure ever and have so much fun. I can't believe I forgot all about it. Silly Ratty!



My leg is still broken. I'm waiting for someone to fix it, it's taking FOREVER! They keep saying, 'It's complicated'. But, I am having HEAPS of fun with my crutch. I use it to poke the dog while he's sleeping, sometimes I do it when he's awake (I like to live dangerously). I'm getting very good at sneaking up behind him. He can jump really high when he gets a fright.

Do you know the best part about not being able to get out and misbehave? (I mean be a Well Behaved Ratty). Reading LOTS of books, that's what! I'm soooooo lucky to live in the Library. I get to read all the books I want. You can have the best adventures when you read a book. I read about the World's Worst Pets, I didn't know that there were so many. I wasn't in the book, Phew! There was a book about a Bad Bunny that wasn't really that bad. I found a new Dinosaur book. It had heaps of Dinosaurs in it. I didn't sleep very well that night. I kept dreaming that a T-rex was trying to eat me.



I found a book about Dragons. Not any Dragons, Naughty Dragons. They were lots of fun and got up to all sorts of mischief and kept getting into trouble. I wonder if we're related? They were my type of Dragons. There was even a big scary Dragon but it turned out he was only a little bit scary, kind of. The Dragons were like puppies, that could breathe fire and fly. And they loved to eat and eat and eat, just like puppies, except puppies don't burn down buildings when they're sick. There are heaps more Dragon books in the library, I think I'll have to read them all. But first, I need to find me a pet Dragon.



**TUATAPERE  
HANDYMAN SERVICES**

**Barry Bennett**  
**(03) 226 6730**

- **Painting - Interior/Exterior**
- **Waterblasting**
- **Spider & Fly Spraying**
- **General Repair Work**
- **Lawnmowing**
- **Weed Spraying**



**RAW FARM HOMEKILL**

**Wayne Saunders**  
Qualified Butcher

027 457 6350

rawfarming@yahoo.co.nz

82 Clifden Highway  
Tuatapere

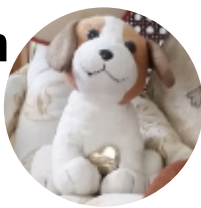


Cut up the way you want  
Beef  
Pork  
Sheep  
Venison  
Other game meats  
Traditional Smallgoods

Remember to ring & book in your beef! It's getting busy!

# The Adventures of Charlton

Our trip to Africa started with another very long flight, all the way to Jomo Kenyatta International Airport in Nairobi, Kenya.



From there we travelled to Tanzania to be welcomed at our camp at the foot of Mount Kilimanjaro, the highest mountain in Africa. It was very hot in Africa and I wondered why there was a white snow-cap on Mount Kilimanjaro. Later of course I understood that the higher you get up a mountain, the colder it gets even in tropical regions. And then what comes down as rain further down turns into snow up the top.

The track up *Kili* as it is called by the locals was very different to Mount Everest. Along the bottom tropical Rainforests line the narrow, stony, winding track along the mountainside. Then after a few days walking slowly uphill, the track turns rockier, steeper and much harder to walk. The air there is also very thin and it is more difficult to take your breath the higher up you get. I must say that I am very grateful to always be carried along; my legs are rather short for such a long hike and my paws would get sore on the gravel. Not to mention the thought of getting dirty and made to have a bath! The local guides are very helpful and friendly as you can see in the picture; I was glad they came with us all the way to the top!



Then we went on a Safari. We travelled to see *Ngorongoro Crater*, a large caldera on top of an inactive volcano. It is the world's largest. In there are forests, grasslands and lakes where we saw Hippopotamus lazing in large water ponds. 300 different animal species live there, too many to name them all. I was soooo excited to see the local wildlife; Elephants, Zebras, Monkeys, Hyenas, Cheetahs and more - until I practically came face-to-face with a LION. I almost jumped into the camera. After all, Lions are BIG CATS and they are not my favourite animal. I was scared!!! But then Giraffes smiled at me like my friend Moocow does and I liked them much better!

While visiting a local village, I was admired by the welcoming people and one man wanted to adopt me. NO WAY! - I thought because there was only very dry dusty brown earth around and you know what that does to my coat - no way would I have stayed. The Maasai (this means People speaking Maa) are really nice though; they showed us a traditional dance; they kept jumping vertically and jumping high and higher and for what seemed a long time on the spot; I actually got rather dizzy just watching them. Then, after we all got back to our lodge in the evening, we settled and had a nice cold local drink, reminiscing for hours about the lovely days we spent in Africa.

## PROPERTIES WANTED!

Contemplating selling? You might be surprised by what your property could fetch on today's market

Contact Julie today for a free appraisal and to discuss how you could take advantage of this buoyant property market



**Julie Guise**

**021 256 4164**

**julieguise@sre.co.nz**

**SOUTHLAND REAL ESTATE LTD**  
Licensed under The Real Estate Agents Act 2008 MREINZ

**SOUTHLAND REAL ESTATE LTD**  
Licensed under The Real Estate Agents Act 2008 MREINZ

For all your fencing requirements

**WESTERN FENCING**  
SHEEP | DAIRY | DEER



Call BEVAN 0277 413 213

**ADS**

**ANDERSON DRAINAGE SERVICES**

*Keeping Southland Flowing*



**Fraser Anderson**

**021 162 0210**

**fraseranderson1@gmail.com**

**Forest Hill, Southland**

**Follow us on Facebook**

*Call us today!*

- ✓ Tile Cleaning
- ✓ Culvert Cleaning
- ✓ Septic Tank Blockages
- ✓ Domestic Blockages
- ✓ Rural Drain Blockages



# Tui Base Camp



WAIAPU AREA SCHOOL

Year 1-13 Education

Live to LEARN, LEARN to Live

## Kia ora Western Wanderer Readers!

Room One have had some awesome space adventures this term whilst learning about the solar system. They made a massive solar system spanning the length of their classroom, created rockets that actually blasted off, painted moon rocks and made volcanic eruptions just like the ones on Mars! They have been busy little bees in technology creating some amazing garden art sculptures, and have absolutely loved using all the tools and utilising the amazing workshop at WAS. Other highlights this term have included cricket coaching with Jacob from Cricket Southland, a visit to Tuatapere Playgroup and a trip to Rabbitte Ranch in Invercargill where they had a fabulous time petting all the baby farm animals and riding the pony and donkey.

We cant wait to see what adventures next term will bring for the tamariki of Room 1!



Room Two have had an amazing term, we've been so busy with our speeches, woodwork, camp, and practicing for our production. We've really had a blast writing and presenting our speeches, three of our students were brave enough to read their speech in front of the whole junior assembly. We've also been hard at work creating our lawn ornaments in woodwork this term, using all sorts of tools like drills and saws. We had an awesome time on camp, doing so many activities such as abseiling, archery, horizontal bungy. Finishing off the camp with a bonfire on the beach, and roasted marsh-mellows, WOW!



**Open from 8:30am every day!**

*Kitchen open until at least 7.30pm*

**COME IN &  
CHECK OUT OUR SPECIALS**

**All new coffee cards! Ask for one with your  
next Amore Coffee (Dine in or T/A)**

★ **15th October - Live Band**

★ **2nd November - HVP Camp Quiz 7pm**

Pre-order your morning tea and lunches by  
calling **(03) 226 6250** and we can have it ready  
for you to pick up when it suits you.

**Don't forget we now have a mini-van!**

Contact us to organise a night out at  
Tui Base Camp (pick-up and drop-off).  
Enquires to **James 027 837 3521**

**For all of your dine in and takeaway  
requirements including:**

In-house roasted Amore Coffee  
In-house made pies, sausage rolls,  
cheese rolls  
Range of breakfast options  
Packed lunches  
Catering

**Phone: (03) 226 6250**

[www.tuibasecamp.co.nz](http://www.tuibasecamp.co.nz)



**Keep an eye on our  
Facebook Page  
for our latest updates!**





**Room Three** has spent the last few weeks getting ready for the school concert that is to be held at the end of term.

We have really enjoyed getting our hands busy in the Woodwork room and having a go with the drill, the router, the hammers, saws, and even some sand paper.

The awesome STEAM challenges that have been organised by the wonderful Miss Chrissy have also been a massive hit. We have constructed zip line carriages out of LEGO and towers from straws.



**Room Four** have had a busy term. We have had some of the class away representing WAS at the Gore Basketball competitions.

Although new to this sport, we learnt a lot of the skills needed for the competition level.

Hopefully we will be playing a lot more of this game in the near future.

Camp is 21 -23 September at Omaui. We are looking forward to doing a lot of different activities that will push our confidence levels.

A big thanks to the Tuatapere Lions for donating \$2,100.00 towards our camp costs.

The junior school will be performing for the community on the 29th of September. The production will start at 7pm. This year the students are putting on a few items each. We have decided that a covid out break can't affect such a production. We are all very excited and look forward to seeing you.

# Alex Reid CONTRACTING

**Paddock Cultivation from  
Ploughing to Sowing  
Dry Hire available  
Aerating  
Direct Drilling  
Ridging  
Mulching**



## **Dairy Lane Maintenance**

Tip Trailers • Vibrating Roller • 2 Tip Trucks

## **Sheep Conveyor**

Drenching, Vaccination etc • 3 way draft

## **Large Skid Steer for calf shed cleaning, loading Muck Spreaders etc**

4 Muck Spreaders • 16,000 litre Slurry Tanker  
Pond Stirrer • Umbilical Slurry System



**Rural Contractors**  
NEW ZEALAND

**PHONE ALEX  
0212775308 CELL  
03 2255377 HOME**

*Your Local Graphic Designer & Print Specialist*

# McMAHON design studio



Design • Print • Copy

Here at McMahon Design Studio, we have over 15 years experience in graphic design, specialising in designing for print from advertising & promotional posters & flyers, logo design & branding, to personal stationery & giftware, wedding/event stationery & signage and everything in between.

We enjoy working with individuals, businesses, & community groups to create unique designs and products that are personalised for you, ensuring that it encompasses your personality, vision, ideas, goals and audience.

We take pride in researching and sourcing the highest quality paper, materials, printing processes, embellishments & finishing tools that are fit for purpose and that's the perfect solution for your project.

*We love designing and so excited to work with you!*

## Our Services

LOGO DESIGN & BRANDING

ADVERTISING & SIGNAGE DESIGN

SOCIAL MEDIA GRAPHICS & EMAIL SIGNATURES

PHOTO EDITING & CUSTOM ART

CERTIFICATES - PRIZE CARDS - PROGRAMMES

CALENDARS - BOOKLETS - REPORTS - NEWSLETTERS

MAGAZINES - CATALOGUES

FLYERS - POSTERS - BROCHURES

ALL OFFICE STATIONERY

PERSONALISED STATIONERY & CARDS

PRESENTATION & PROMOTIONAL ITEMS

WEDDING & EVENT STATIONERY

PERSONALISED & PROMOTIONAL GIFTWARE

PADS - STICKERS - LABELS - VINYL & HEAT TRANSFER DECALS

*And much more..... Contact us to discuss your project!*

**Get in touch with us today  
for your free consultation and quote!**

P: 027 242 8109 E: mcmahondesign@outlook.com

**9 Cumnock Street, Wallacetown**

### OPENING HOURS:

Monday, Tuesday: 9.30am - 4.30pm

Wednesday, Thursday: 9.00am - 4.30pm

Friday: 9.00am - 1.00pm



## Ice cream & Milkshake Parlour

16 Orawia Road  
6am - 4pm every day

Don't wait until 8.30 for breakfast,  
"THE WELL" is open from 6 AM  
with a great range of breakfast options  
(Our ALL DAY BREAKFAST is a real winner)

Also in house are SAUSAGE ROLLS, PIES,  
CHEESE ROLLS, and a range of tasty hot foods,  
try our SEAFOOD CHOWDER and  
World Famous PEA and HAM SOUP.

Not forgetting the WAFFLES,  
people come a long way to try them -  
and then come back for more.

A huge range of ICE CREAMS, and MILKSHAKES  
to satisfy everyone. Ask about our  
HOUSE SPECIALITY - it changes weekly.  
SANDWICHES made as you wait, and  
beautiful TOASTED SANDWICHES.

BUT THERE'S MORE ...  
COME ON IN, TASTE, ENJOY, RELAX AND JUST BE

THE WELL - TUATAPERE  
Home of the Humpridge and where summer days  
are longer than anywhere else in the world.

## YOUR BUSINESS CARD COULD BE HERE!

### CONTACT

[yourwesternwanderer@gmail.com](mailto:yourwesternwanderer@gmail.com)

**FOR PRICING/DETAILS**

## Tuatapere Freight

LOCALLY OWNED & OPERATED

RUNS MONDAY TO FRIDAY  
WEEKENDS BY ARRANGEMENT

**Phone Brandon**

**027 436 4360**







## Want to know more about Tuatapere Hump Ridge Track becoming a Great Walk in 2023?

Kia ora koutou.

You are invited to come along to the Waiau Town & Country Club, 41 King Street, Tuatapere on **Thursday 13 October 2022** to hear all about the Hump Track Great Walk Project.

Following the success of our 2021 event, we are hosting another community information session to share the latest news, progress and the plans ahead.

**The presentation and Q&A session will start at 6pm and finishing approx. 8pm.** Finger food, snacks and drinks will be provided prior to this session.

Representatives from Department of Conservation (DOC) as well as partners and stakeholder groups involved in the project will be there.

This is open to anyone from the Tuatapere community and wider Western Southland District – please share the news about this event with your whānau, your mates, your neighbours.

We look forward to meeting you all again and talking about the project.

If you cannot make it to Waiau T&C Club, you can still catch up on the news shared on the night, via our project webpage Hump Ridge Great Walk Project: Our work ([doc.govt.nz](http://doc.govt.nz))

All enquiries about this event, and the project, can be sent to the team via email **HumpRidgeGWP@doc.govt.nz**

Ngā mihi nui,  
Hump Ridge Great Walk Project Team.

### INDEPENDENT MIDWIFE

**ISOBEL DEVERY**

*Caring for women throughout  
Pregnancy, Birth till six weeks  
Post Natal.*

*Choices for place of birth,  
Home or Winton Birthing Units  
or Kew Hospital.*

*Free pregnancy tests  
available on request.*

**Phone: (03) 22668822  
027 2267020**

©Pee-rare, EthicGraphics®

### Sewing and Mending Services Available

Experienced machinist offering fast, reliable service with very reasonable rates.

I will mend/make anything from zip replacements to curtain making - just ask!

Free quotes and pick-up delivery service within Tuatapere.



Contact **Deborah**

**(03) 226 6783 or 021 0305 667**



### DAGWOOD DAGGING

*Available now to all new and existing  
customers for all your crutching  
requirements.*

*3 Stand or Single trailer available  
7 days a week, wet or dry.*



*No job too big or too small.*

Competitive rates

**Jeff Chambers**

**027 3042 241**



# Waiau Town & Country Club

<https://www.waiautownandcountryclub.co.nz>

Join us as we transition our image and food scene at the club!

Come and meet Dylan ... our new Chef & Co-Manager!

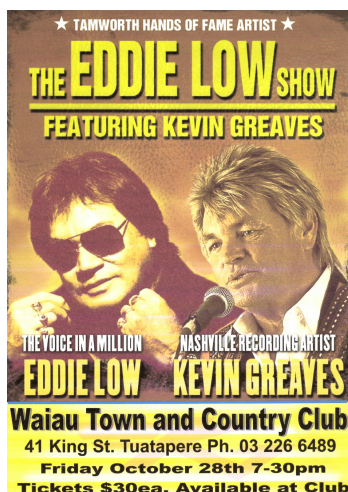
**Our Bistro is open for Dinner Service  
5pm-9pm\* Thursday to Sunday!**

(\*Bistro may close from 7:30pm onwards if not required)

**We are the perfect place for your functions/birthdays!**

We can cater! Call us to discuss options! **03 22 66 489**

Family Friendly | Happy to cater for dietary requirements.  
Please pre-book for groups of 8 or more.



## Club Opening Hours:

Mon - Thurs 4pm till close.

Fri 3pm - close.

Sat Noon - close.

Sun 3pm - close.

**\*STEAK NIGHT** - every Thursday night - Only \$25

**\*INDOOR CHESS** - Winter Sundays 3-5pm

**\* MEMBERS DRAW & RAFFLES**

drawn every Friday night! Approx. 7.30-8.30pm

**Keep an eye on our Facebook Page for more details on upcoming events**

**New Members Welcome!**

Just pop in or call the club for a nomination membership form.  
Annual membership 2022/23 is \$50 p/p or \$30 p/p for pensioners.

Phone: **03 22 66 489** | Address: 41 King St Tuatapere

Email: [waiautcc@gmail.com](mailto:waiautcc@gmail.com) | Facebook: [facebook.com/waiautcc](https://www.facebook.com/waiautcc)

| Courtesy Van Available |

**We look forward to seeing you!**

**Looking for a babysitter or  
someone to mow your lawns?**

Well, you're in luck!

I'M A RELIABLE TEENAGER  
LOOKING FOR SOME WORK

Contact Jay on 027 242 2890

## TUATAPERE OUTDOORS & HARDWARE

For all your

Gardening tools, lawn care, garden hoses, insect and disease sprays, potting and compost.

We have those building requirements for that weekend job with a good selection of silicone, nails, screws and bolts.

New fishing rods and reels, fishing lures, good selection of soft bait, fishing nets, flounder and eel nets.



Good selection of giftware.

Come in, check out what we have.

**Contact:**

Judy **027 225 8192**

Paul **027 890 3602**

Shop **(03) 226 6363**



**027 252 7933**

- ☒ Renovations
- ☒ Extensions
- ☒ New Builds
- ☒ Sheds/Farm buildings
- ☒ Decks
- ☒ Pre-purchase house
- Inspections

Call us for any building requirements

Ph 027 252 7933 email: [aaroncbltd@gmail.com](mailto:aaroncbltd@gmail.com)

**For Landscaping,  
Land Maintenance,  
Gravel Supply & Cartage**

**GRADES OF CRUSED & SCREENED GRAVELS,  
ALKATHENE LAYING, ROOTRAKING,  
FARM TRACKS, DAIRY LANES**



**ELEVATOR SCRAPER,  
BOBCAT & ATTACHMENTS,  
LANDSCAPING, TRENCHING AUGERS**

**Supplies of Gravel Ex Waiau River**

River Run Screened Grades Concrete Gravel Pea Gravel  
Rejects for soak holes Crushed - AP30 & AP65  
Peebles for Sheep and Cattle yards and calf sheds  
Fines suitable for cow lane capping

**K J SUTHERLAND  
GRAVELLING &  
AGRICULTURAL CONTRACTOR  
2475 OHAI-CLIFTON H/WAY  
ORAWIA RD2 OTAUTAU 9682**

**Ph 0274 367 934**

**K.J. Sutherland  
Contracting  
Bobcat T190**

**With attachments: Landscape Rake,  
Augers and Trencher**

**Suitable for all landscaping, shed and yard  
maintenance**

**Muck-spreader and tip trailer available**



**PHONE KEVIN  
027 367 934 / (03) 225 5716**

**MILLARS**

- PLUMBING
- GAS FITTING
- DRAINLAYING
- LICENSED BUILDER

Master Plumbers  
f Ph 027 4340 705 or 03 225 8567



We specialise in:

**Resource consents  
Farm environmental plans  
Policy advice  
DOC concessions  
Landscape plans & assessment**

We take care of the paperwork,  
so you can do what you do best!

Sonya: 027 5050 077  
Rebecca: 027 4246 129  
www.slwp.co.nz  
Locally owned & operated



# WaterForce

Irrigation Systems  
Pumping & Filtration  
Effluent Dispersal  
Water Management

20 Winton Hedgehope Highway, Winton  
03 236 9805 [www.waterforce.co.nz](http://www.waterforce.co.nz)  
**0800 4 FORCE (4 36723)**

# JAM

Agri Spreading

Liquid Foliar Spray Contracting

- ✓ Fertiliser
- ✓ Fish Fertiliser
- ✓ Gibb & NBoost
- ✓ Herbicide
- ✓ Humates
- ✓ Soil & Herbage Testing

Jon – 021 575 071

# DRAKE

PLUMBING & DRAINLAYING LTD

C: 0274 247 102  
T: 03 225 8652

E: [admin@drakeplumbing.co.nz](mailto:admin@drakeplumbing.co.nz)

**KIERAN DRAKE**  
Certifying Plumber  
& Drainlayer

## LOCAL HISTORY FEATURE

*George Charlton has been contributing articles featuring 'Movers and Shakers' who have contributed richly to the Tuatapere community. I am sure that you, readers, will all agree that George, himself, has and continues to be a great member of our community. Most months we can enjoy reading fascinating local history preserved by George. The following has been written by George about his childhood and working life. The Charlton family have been prominent in the life of Tuatapere for over 100 years ~Anne Horrell*

## My Early Years

*by George Charlton*

I first began my schooling in Otautau in 1950. I can remember going to school there, but very vaguely. At that time my father, Lex Charlton, worked in the National Bank. In about 1952 he was transferred to his hometown of Tuatapere, where we lived up the end of Jenkins Road in one of two houses. The other house was owned by Jim Williams who was a farmer. Directly opposite the two houses was a saw mill that was owned by the Templar brothers. We were only there a matter of a few months when we were awakened one morning about 3am by the sound of breaking and a huge roaring sound. The Mill across the road was on fire and the roof had fallen in.

With the houses being so close to the Mill there was a strong possibility that the two houses would be also burnt. There being no 24 hour telephone exchange Dad had to get in the car and travel about two miles into town and break the glass on a pole at the fire station to start the fire alarm to get the Brigade. By the time Dad and the Brigade got back my mother, Betty, sister, Catherine, and myself had evacuated the house. Jim and Teresa Williams, who had eight children, also evacuated their house. When daylight came the saw mill was just a smouldering mess but the two houses were still standing.

The Williams' family, when I look back to then, had not a lot financially but were a very close family. Jim and Teresa looked after and brought up their family with what they had. Jim milked cows and at the same time was bringing in more land to pasture. Their eight children, five boys and three girls, were well fed, clothed and never missed a day of school. I will always remember that they were good Catholics and, having no car at that time, the whole family would walk to Church and back home again every Sunday. I also remember my mother helping Jim milk cows and drive his old tractor on numerous occasions. After the remains of the Mill were cleaned up all that was left was a great heap of sawdust and it became a good playing area for the Charlton and Williams children!

*to be continued ...*



# BARRETT *Ag* LTD

**FULL SILAGE AND BALEAGE SERVICE**



**ALL CULTIVATION  
INCLUDING DIRECT DRILL  
AND STRIP TILLING - PRECISION PLANTING**



**EXCAVATION  
20 TONNE DIGGER/ GRADER  
D85 BULLDOZER/ ROLLER  
TIP TRUCKS AND TRAILERS**



**Barrett Ag Ltd  
Ph: Kahu- 027 5183 448  
E: [barrettagltd@gmail.com](mailto:barrettagltd@gmail.com)  
FB: Barrett Ag**







**Agricultural Contractors servicing Western Southland and beyond.**

**BALAGE - SILAGE - GROUNDWORK - FEED TRADING**  
**Nigel 021 226 6156 / [fowlecontracting@gmail.com](mailto:fowlecontracting@gmail.com)**





## Tim and Superior go the extra mile

Are you frustrated with the lack of service from your local fertiliser consultant, peddling the same advice year after year regardless of your production outcomes, environment and sustainability?

Give **Tim Adcock** of Superior Fertiliser Specialists a call. He will bring a whole new meaning to service and client/advisor relationships.

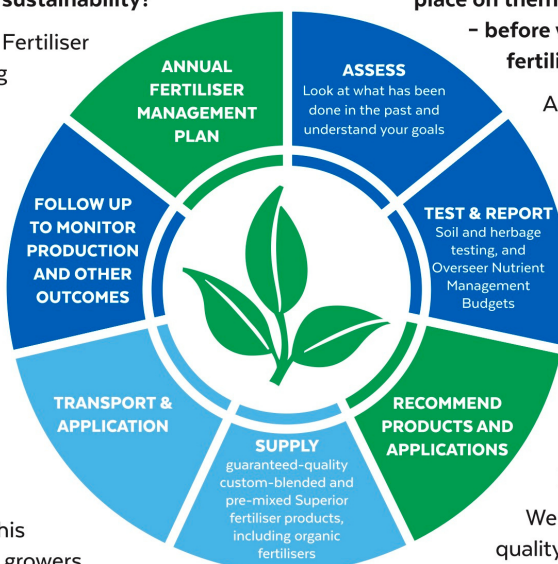
Tim is a key member of the highly skilled Superior team totally committed to helping you develop healthier, more productive soils and plants.

We form a specialist fertiliser company that provides high quality advice and products at competitive prices. We have been doing this for South Island farmers and growers for just on 20 years.

Superior promotes a total soil care package. First, we get to understand the make-up, nutrient status and health of your soils, the demands you are going to place on them, and your production goals – before we apply one kilogram of fertiliser.

A comprehensive regime of vigorous soil tests will be undertaken and the results will provide the basis of a Superior Fertiliser Management Plan customised for your unique situation. This will complement your farm's Environmental Plan and provide the blueprint for an ongoing annual fertiliser programme.

We then supply guaranteed-quality solid fertiliser for your pasture and crops, monitor production and other outcomes, and update your Plans as required.



It's free to talk so don't hesitate to give Tim a call.  
Phone 021 418 224



**Tim Adcock**  
Fertiliser Advisor  
Otago/Southland  
021 418 224  
tim@superior.net.nz

 FERTILISER SPECIALISTS  
**SUPERIOR**  
[www.superior.net.nz](http://www.superior.net.nz)

# TUATAPERE SERVICE STATION

20 ORAWIA ROAD

PHONE: 03 2266475

## HYDRAULIC FITTINGS & HOSES

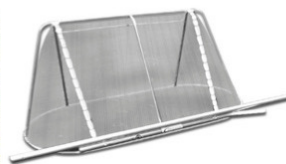
WE STOCK A GOOD RANGE OF CRIMP ON HYDRAULIC FITTINGS FOR AGRICULTURE HOSES. WE CAN ALSO REPAIR OR MAKE UP NEW HOSES.

## WHITEBAITERS

We have all our well-made nets in stock now.

We also have plenty of mesh and ulstron netting if you need to recover any damaged nets.

We have waders, rope, pulleys, cable ties, mutton cloth and much more so come in and have a look.



## RIDGELINE CLOTHING

We have a small number of pink and blue Little Critters Packs still available.

These are no long available so out they go at \$70.00

Blue Camo – Sizes 8 & 12

Pink Camo – Sizes 8 & 10



NZ TRANSPORT AGENCY  
WAKA KOTAHI

## WE CAN PROCESS ALL YOUR

CHANGE OF OWNERSHIPS

VEHICLE EXEMPTIONS

CANCELATION OF REGISTRATION

CHANGE OF HUBOMETER

REGISTRATIONS

ROAD USER CHARGES

## HOURS

**Monday to Friday**

**8.00am – 5.00pm**