



# WESTERN Wanderer



Tuatapere | Clifden | Orawia | Blackmount | Monowai | Colac Bay | Orepuki

Cover Photo: Monkey Island Sunset Sent in by Dale Egerton

Issue 246

At a glance ... what events are on this month?

JULY 2022

MONDAY	TUESDAY	WEDNESDAY	THURSDAY	FRIDAY	SATURDAY	SUNDAY
				1 Rubbish Challenge Tuatapere, 4pm	2	3 Chess 3-5pm WTCC WTCC Sunday Funday Kids ½ price Bouncy Castle & Face Painting
4	5	6 Waiau Valley Netball Club Quiz Night Tui Base Camp 7pm	7	8 Second Hand PopUp Shop TPC Main Rd 2-4pm Rubbish Challenge Tuatapere, 4pm Last Day of School for Term 2	9 Second Hand PopUp Shop TPC Main Rd 10-2pm Southland Multicultural Food Festival 2022 ILT Stadium	10 Chess 3-5pm WTCC Otautau Museum Book Sale Sat & Sun 10-4pm Otautau Catholic Parish Centre WTCC Sunday Funday
11	12	13 St John's FREE Mental Health First Aid Course Otautau St Johns 8:30am - 4:30pm	14	15 Second Hand PopUp Shop TPC Main Rd 2-4pm Rubbish Challenge Otautau Museum Book Sale Fri & Sat 10-4pm Otautau Catholic Parish Centre	16 Second Hand PopUp Shop & MARKET DAY 10-2pm TPC Main Rd Dessert Evening WTCC - 7:30pm	17 Chess 3-5pm WTCC WTCC Sunday Funday Kids ½ price Bouncy Castle & Face Painting
18 Cancer Society Quiz Night Tui Base Camp 7:30pm - \$5p/p	19	20 Deadline for next issue content	21 Soup & Chat 11:30-1pm Tui Base Camp FREE	22 Rubbish Challenge Tuatapere, 4pm	23 Second Hand PopUp Shop TPC Main Rd 10-2pm	24 Chess 3-5pm WTCC WTCC Sunday Funday Kids ½ price Bouncy Castle & Face Painting
25 Term 3 Begins	26	27	28	29 Second Hand PopUp Shop TPC Main Rd 2-4pm Rubbish Challenge Tuatapere, 4pm	30 Second Hand PopUp Shop TPC Main Rd 10-2pm	31 Chess 3-5pm WTCC WTCC Sunday Funday Kids ½ price Bouncy Castle & Face Painting
Coming up ...	Cancer Society Quiz Night Orepuki Hotel 7:30pm 4 August	Order your Daffodil Bunches by 5 August 		 Cancer Society Daffodil Day & Street Stall outside Tui 4 Square 26 August 2022		

Special thanks to



SEE INSIDE FOR MORE DETAILS!  
Want your event here? Let us know at  
[yourwesternwanderer@gmail.com](mailto:yourwesternwanderer@gmail.com)

## COMMUNITY NOTICES & EVENTS

### HANDY PHONE NUMBERS

#### EMERGENCY

POLICE / FIRE / AMBULANCE: **111**



MEDICAL CENTRE: (03) 2266 123

TUATAPERE POLICE STATION:  
(03) 2269 020

TUATAPERE COMMUNITY WORKER:  
027 757 5983

HAUROKO VALLEY SCHOOL OFFICE:  
(03) 2266 753

WAI AU AREA SCHOOL OFFICE:  
(03) 2266 285

TUATAPERE CEMETERY TRUST:  
(03) 2266 065

CHAMBERS SERVICE STATION:  
(03) 2266 654

TUATAPERE SERVICE STATION:  
(03) 2266 475

TUATAPERE FOUR SQUARE:  
(03) 2266 898

TUATAPERE OUTDOORS & HARDWARE:  
(03) 2266 363

### Want to know more about the Hump Ridge Great Walk?

For information or to book/walk the Tuatapere Hump Ridge Track – please contact the Track Operations Office directly via [www.humpridgetrack.co.nz](http://www.humpridgetrack.co.nz)

**Project Webpage:** Stay informed with the facts and news via

[www.doc.govt.nz/hump-ridge-great-walk-project](http://www.doc.govt.nz/hump-ridge-great-walk-project)

**Project Email:** Get in touch to ask questions or to be added to the newsletter distribution list via email: [HumpRidgeGWP@doc.govt.nz](mailto:HumpRidgeGWP@doc.govt.nz)

**Media Enquiries:** please direct to [media@doc.govt.nz](mailto:media@doc.govt.nz)

WAI AU TOWN & COUNTRY CLUB

*Dessert Evening*

ALL YOU CAN EAT DESSERTS



16 July - \$25 per person



We would like to say a massive thank you to all the volunteer firefighters from the Orepuki, Otautau and Tuatapere Fire Brigade who responded so quickly to our early morning calf shed fire last month. The quick response and expertise of those involved stopped us from losing our wintering barn as well as our tiny home which were both located very close to the burning shed.

We would also like to thank the ladies who put on a lovely brunch at the fire station for the firefighters after a mammoth 9 hour effort to extinguish the shed. And another thank you to those from the Tui station who returned for another couple of hours that afternoon to put out hay bales that had reignited.

Another thank you to Lance and Kerry from Harry's Machines for their aid in removing the burning hay bales from the shed which helped immensely in extinguishing the fire and their timely response in burying the remaining bales that flared up again throughout the night.

We would also like to extend our gratitude to those who delivered food, offered support and sheds to store replacement feed in and to rear our calves in in the spring.

Another thank you to our local PGG and Farm Source stores who have helped us replace essential plant and equipment that we had lost in the fire which allowed us to keep the wheels on until we could dry the cows off.

It's times like this that often remind you of what a wonderful caring community that we are fortunate to live in, where others drop everything and come running to one's aid.

We will never be able to express what everyone's support has meant to us and will forever have plenty to be grateful for.

Many thanks!

2 Murray, Linsey, Alannah and Julie Skedgwell



# Community Champion Honoured

A Community Service Award was recently presented to Tuatapere resident, Gary Templeton.

Gary has been recognised for his dedication, hard work and outstanding service to his hometown community.

Southland District Councillor, George Harpur, on behalf of the Tuatapere Te Waewae Community Board, in conjunction with the council, presented Gary with the award for his long-standing involvement in sporting organisations and activities.



Congratulations on your award Gary! Well deserved!

## SOUP & CHAT IS BACK! (FREE)

Thursday 21 July at Tui Base Camp.

11:30am to 1:00pm

Please book your place at the table, making sure there is enough soup to go around. Hope to see you there!

Phone Keri Potter 027 757 5983





**jubilee**  
BUDGET ADVISORY SERVICE

### MoneyMates Is Coming To Otautau

"MoneyMates is a Fun, Free, interactive group that runs once a week for 8 weeks discussing a different money related topic each week."

"Connect with others & be inspired to take control of your finances"

**Topics**

- Money & me
- Needs & wants
- Goals
- Debts
- Credit
- Saving
- Getting a fair share
- Keeping track

Every Thursday For  
8 WEEKS  
12:30pm-2:30pm  
4th August-22nd Sept  
Otautau Connect Cafe  
Meeting Room

Everyone Welcome  
Whanau Centered  
Empowering  
& Fully Confidential  
refreshments  
provided

If you would like to come along  
call or text Keri Potter 0277575983  
or email: tcworker@extra.co.nz

Limited numbers available so get in quick

Groups will be facilitated by Caitlin From Jubilee Budget Advisory Invercargill

## COMMUNITY NOTICES & EVENTS

### We're Updating Our Community Contacts Handy Pull-Out Reference Guide

It's that time again .... we're updating our handy pull-out reference guide to local services, community groups, sports clubs, teams etc.


We try to include the guide twice a year, either in the July or August Issue and again in the February or March Issue.

It is AGM season .... so if details for your sport, club and/or committee have changed, let us know.

If we've missed your sport, club, group or committee - let us know! Send an email with the details to:

[thisistuatapere@gmail.com](mailto:thisistuatapere@gmail.com)

Help others find your community group, service or sporting code!



**TUATAPERE PLAYGROUP**  
TERM 2, 2022 LEARNING PLAN

**THEME: SUPER SENSES — LEARNING THROUGH SENSORY PLAY**

**TE WHARIKI PRINCIPLE FOCUS: EMPOWERMENT**  
**TE WHARIKI STRANDS FOCUS: COMMUNICATION & EXPLORATION**

Date	Theme	Activities
6 <sup>th</sup> May	Magnificent Mothers	Make something lovely to gift our Mums on Mothers Day.
13 <sup>th</sup> May	Frozen Eggs	Explore frozen balls of ice and discover what may be hiding inside! How will you get it out?
20 <sup>th</sup> May	Pink Shirt Day	Wear something pink to show your support & bring a gold coin donation - Speak Up, Stand Together & Stop Bullying.
27 <sup>th</sup> May	Sensory Texture Balls	Create sensory balloon balls with different textures using a range of fillers such as rice, cornstarch and play-dough.
3 <sup>rd</sup> June	Bubble Fun	Make a tub of bubbles and then experiment different ways of changing them... food colouring, glitter, shaving foam etc.
10 <sup>th</sup> June	Mud Glorious Mud	Create 'mud' using cornstarch and cocoa and then hold a muddy car race! Whose car will be the winner?
17 <sup>th</sup> June	Rainbow Spaghetti	Cook and then dye some pasta spaghetti then use it for sensory play.
24 <sup>th</sup> June	Matariki Public Holiday Observed	No Playgroup
1 <sup>st</sup> July	REAP Visit	Marree Day from REAP will be visiting with her heuristic play activities.
8 <sup>th</sup> July	Teddy Bears Picnic Day	We will celebrate the end of Term and world Teddy Bears Picnic Day by holding our own Teddy Bears Picnic.

## TUATAPERE AMBULANCE

### Did YOU Know?

The Tuatapere Ambulance is a funded service by the Tuatapere Lions Club, for the residents of Tuatapere & Districts.

Should you receive an account for this service from St John, please forward it immediately to:

**The Treasurer**

**Tuatapere Lions Club**

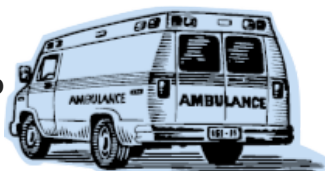
**PO Box 47**

**Tuatapere**

Sometimes we experience difficulty in receiving the invoices for YOUR trip - so PLEASE do forward them on to us.

Thank you!

**Tuatapere Lions Club Charitable Trust  
Ambulance Committee**



## COMMUNITY NOTICES & EVENTS

### CALLING ALL LOCAL COMMUNITY GROUPS / SPORTING TEAMS/CODES ETC

It's free to advertise your local group, sporting team/code in the Western Wanderer! If you want to share the results of a game and/or tournament or celebrate the achievements of a team member or player - we can print that too! Email [yourwesternwanderer@gmail.com](mailto:yourwesternwanderer@gmail.com) by the 20th of the month prior & we'll also add any event notices to the Community Noticeboard for the next issue!

### TUATAPERE PRESBYTERIAN CHURCH

Has it been a trying week? Is life a bit of a struggle?  
Have things not quite gone your way?  
Need somewhere to reflect and rest your mind?  
Need to 'take a breath'?

How about joining with us for a time of quiet fellowship on **Sundays at 10.30 am** at the **Tuatapere Presbyterian Church, Main Street, Tuatapere**

A time to be, to reflect and refresh. There is a children's time where they can be in their own space too. All are welcome to join us.  
Make new friendships, create new moments.

Need to know more? Phone or message  
**Lynley on 027 297 4767**

### ADDRESS NUMBER PLAQUES

Address number plaques can now be ordered through the Tuatapere Community Worker Support Trust. These can be clearly seen anywhere day or night. The number plaques are for properties. Each number must be specific and correct for this purpose.

To order please call **Keri Potter 027 757 5983**



### WANTED BY THE POP UP SHOP

**Jigsaw puzzles - children's books - linen for double and queen size.**

We have customers looking for the above and our stocks on those items is running low - can you help? Contact Carol **021 110 1835** for pick up.

## WESTERN SOUTHLAND HEALTH SHUTTLE

The Western Southland Health Shuttle Service travels from Otautau, Ohai, Nightcaps, Tuatapere, Riverton - covering all of Western Southland. We also connect with the Invercargill-Dunedin shuttle.

The Western Southland Health Shuttle operates Monday - Friday (excluding Public Holidays).

Bookings are required by 3pm the day prior to transport.

**Ph: 0800 103 046 to book.**

Please book as soon as you receive your appointment.

## TUATAPERE VOLUNTEER FIRE BRIGADE

We're on the lookout for members to join this rewarding organization. We are looking for persons who are, ideally, available throughout the day.

If you think that you would like to try this (sometimes lifelong) commitment, then please feel free to come and try it!

We train on Tuesday nights at 7:30pm during daylight saving and 7pm through the winter months.

We look forward to meeting with you.





## **POP UP SHOP** Quality second hand goods

### **OPEN**

**Friday 2pm to 4pm**

**Saturday 10am to 2pm**

Tuatapere Presbyterian Church Hall, Main Road, Tuatapere. Stay a while and enjoy a cup of tea or coffee and something to eat. **Everyone welcome.**

*A good selection of children's and adult clothing, household items, toys, books, linen, shoes, and more. Check out my weekly Facebook post.*

**Donations of items always gratefully received. Thank you for helping us help the community. Drop off at the church or for other options contact me. Carol Diack 021 110 1835**

## **MARKET DAY** Stalls of craft and other goods

**Every 3<sup>rd</sup> Saturday of the month.**  
**Next market day 16<sup>th</sup> July.**  
**From 10am to 2pm**

Stalls are in the foyer of the Tuatapere Presbyterian Church, Main Road, Tuatapere. **Everyone welcome.**

*Check out my Facebook post of that week. Greeting cards/wheatbags/knitting/preseves/plants/essential oil products and more.*

To book a table or any queries please phone or text **Carol Diack 021 110 1835**

## **NEED A JP?**



The following Justices are available by appointment:

**Tuatapere**  
Keri Potter 027 526 3137

**Te Waewae Bay**  
Shirley Whyte 027 504 5220

**Blackmount**  
Nicky Baker 0276435880

## **WESTERN SOUTHLAND WOOLCRAFT GROUP**



Spinning, Felt, Weaving, Knitting, Crochet. Other crafts welcome!  
1st & 3rd Wednesday of the month.  
10am - 3pm. \$3. BYO Lunch.  
Scout Den, Erskine Street.  
For details please contact:  
**Helen Todd 022 103 9327**



## **TUATAPERE & DISTRICTS LIONS CLUB PROJECT**



### **SUPER DIRT**

Super dirt bags are now weighed so more in each bag!  
**\$8 per bag - ready for your garden!**

Super dirt can be collected from:  
Cracks Yard, Grove Burn Road,  
in the mornings Monday to Friday.  
Weekends by arrangement.

Delivery by arrangement - (but not guaranteed)

Phone Trevor (03) 225 5864 or  
Stephen (03) 226 6817



## **TUATAPERE COMMUNITY WORKER**

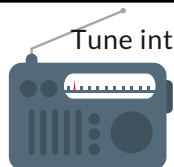
Room 5 Medical Centre  
69A Orawia Road

Monday - Thursday 10am to 3pm  
Keri Potter 027 757 5983  
Email: [tcworker@xtra.co.nz](mailto:tcworker@xtra.co.nz)



**Get your car washed, dried and windows cleaned**  
**Price arranged on request!**

Contact: Rex Hibbs Flat 1/26 Orawia Rd, Tuatapere



Tune into Tuatapere's very own Radio Station

**88.2 FM - Tui FM!**

Hits of the 80's & 90's and  
today's current music!

## SALVATION ARMY FAMILY STORE TRUCK

The Salvation Army Family Store Truck will come out and collect large amounts of your pre-loved furniture & other household items. This service is free. Please call the store to organise your visit on **03 214 5380**



## TUATAPERE HEALTH & GIFT SHOP - Riverton Pharmacy

SHOP HOURS: Opening time: 12.00pm.  
1st prescription drop from 12.30pm daily.  
If we can help in any other way, please  
contact Riverton Pharmacy **(03) 234 8515**



## COUNTRY CORNER CRAFTS

Come in and browse and see what we have to offer. Hats, scarves, children's knitwear, cards, jewellery, woodware, sewing, jams, pickles, sauces, etc.

Tuatapere souvenirs "On Natures Edge" logo are always available.

Is anyone interested in joining to sell their crafts? You are more than welcome to contact us.

Want to volunteer your time & work in the Craft Centre - let us know! It's a great way to meet people! If you wish to view the shop and it is closed, please ring the ladies below to open it for you.

**Louise Greber (03) 668 6001** or  
**Lyla Sherriff (03) 226 6187**

## TUATAPERE ENVELOPES

Envelopes printed with the "Tuatapere on Natures Edge" Logo can be purchased at Country Corner Craft Shop 1A Orawia Road. **Cost \$3.00 per 10**



## COMMUNITY NOTICEBOARD

### CHESS!

Who is keen for a game or to learn?



**Inside venue for winter!**

**Sundays 3-5pm at Waiau Town & Country Club**

Gold coin donation appreciated to help pay for the sets. See you Sundays, just turn up, no need to register or anything!

### WAIAU SQUASH 2022

We hope to have two women's teams and two men's teams in the local Western Southland competition.



We are always looking for new members so please contacted Rebecca or Sam if you are interested.

Squash is a great way to keep fit over the winter, and socialise with some like-minded people!

Family/social keys are also available.

Contact: Sam Egerton **027 250 5477**

Rebecca Robertson **027 424 6129**

### INDOOR BOWLS

The Indoor Bowls season is underway and the Waiau Indoor Bowling club is desperately needing players to avoid closing down.

We have practice nights on Mondays 7.30pm with competition games Thursdays 7.30pm at the Waiau Town & Country Club.

Young players are welcome to join with training/coaching provided.

If you'd like to join or know any who is keen ... please email [jessejculbertson@icloud.com](mailto:jessejculbertson@icloud.com)

### SENIOR CITIZENS

Senior Citizens is a group of over 60s that meet every **Friday afternoon at 1pm** at the rooms behind the RSA Hall.

We are always looking for new members so if you would like a fun afternoon playing bowls, cards or just catching up with friends, come and join the group. Contact: Olive Bennett Ph **(03) 2266 477**



## COMMUNITY NOTICEBOARD

### TUATAPERE PLAYGROUP

Tuatapere Playgroup welcomes all 0-5 year olds & their parents/caregivers to come join the fun!



**Friday mornings from 9am to 12pm.** Bring a packed morning tea and drink bottle.

We provide a warm, friendly atmosphere for children to form bonds and learn alongside each other and a place for parents to connect.

For more info message our Facebook page or contact Gemma on **022 040 3368**

You'll find us at **23B Orawia Road, Tuatapere**

### CLIFDEN PLAYGROUP

45 Otahu Eastern Bush Road. Join our FB Group to check if it's on: **Wednesday (during School Term) 9:30am - 12:30pm.** All mothers and children welcome. Bring packed lunchbox for your child's morning tea. Contact: Sarah **027 699 5234**

### TUATAPERE TOY LIBRARY

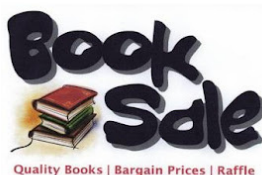
Tuatapere Toy Library has been a toy swap/hire service provided to the young families of Tuatapere and surrounding districts since 1989.



The purpose is to create opportunities for the little people of our community to have accessibility to toys. A small contribution of an annual membership allows families to join the group and have access to the toys. For more information or questions please text or ring **Nathalie Pahl on 027 4759 075**

### OTAUTAU MUSEUM ANNUAL FUNDRAISING

Saturday 9th & Sunday 10th July & Friday 15th & Saturday 16th July  
**10am - 4pm**



At the Otautau Catholic Parish Centre (89 Main Street - Opposite Western Motors)  
Donations - any books, DVD, CD or jigsaw puzzles (must have all the pieces) can be dropped off at Otautau SDC or contact **Robyn 027 338 6327**

### WAIAU MEMORIAL LIBRARY

**Library Hours: Fridays**  
10:00am - 11:30am  
2:30pm - 4:00pm  
7:00pm - 8:00pm



### ★ Firewood For Sale ★



The Waiau Star Golden Oldies are fundraising for a trip to Cambridge in 2023 to play Leamington in memory of the late **Bill Wayne Cook.**



- Mixed Firewood - Macrocarpa, Old Man's Pine + Bluegum.
- \$70 per metre - 10 metre minimum order
- Ready for pick up at the start of July

**Contact Stump on 021 525 227**

### SOUTHLAND COMMUNITY LAW CENTRE

**Free legal information and advice for the community of Southland.**

2nd Floor, Cue Building, 33 Don Street, Invercargill.

Phone **(03) 214 3180**

Freephone: 0800 550 800 (outside Invercargill city only)



ESSENTIAL OILS 100% PURE GIFTS OF NATURE  
Florals Trees Plants Herbs Spices Citrus

To Learn More, phone or text your local Wellness Advocate  
Carol Erskine Papatotara 0274 599 654



WAIKATO VALLEY NETBALL CLUB



# QUIZ NIGHT

@TUI BASE CAMP

WEDNESDAY 6TH JULY

PRIZES FOR 1ST, 2ND & 3RD

DOORS OPEN AT 6:30 PM QUIZ STARTS AT 7:00 PM  
\$5 PER PERSON MAX OF 4 PER TEAM.  
THERE WILL ALSO BE RAFFLES AND AN AUCTION!!!

FUNDRAISING TO HELP FUND NEW JUNIOR UNIFORMS AND REPLACING EQUIPMENT

**For Sale:** Two small chest freezers  
Please phone **027 226 6087**

PLEASE HAVE YOUR ARTICLES, NOTICES, OR  
UPDATED ADVERTS FOR THE  
WESTERN WANDERER SENT IN BY  
**20th of JULY**  
**(for the AUGUST Issue)**

**SOUTHLIFE**  
**Community CHURCH**

*Steve & Sharon*  
are Pastors  
and we are an area church





We believe in Community and endeavour to show this the best we can by the way we care and serve!

MISSIONS  
"BRIDGE CHRISTIAN MINISTRIES UGANDA"

We warmly invite you to come along to one of our services.  
It would be great to see you

**Sunday Service**  
10am Truro St, Orepuki

## COMMUNITY NOTICEBOARD

### TUATAPERE & DISTRICTS PROMOTIONS INC

Tuatapere & District Promotions Inc went into recess at their AGM on Wednesday 15th June as no one present could commit to taking on the President or Secretary role.



There is to be an informal meeting to discuss the future of the group on **Wednesday 20th July at WTCC at 7pm.**

If there is no interest from within the community to continue with The Promotions Group decisions will need to be made regarding its future.

### ILT KIDZONE FESTIVAL

July 13-18



Southland Girls High school will host more than 150 activities for kids and families to enjoy.

Find out more: [www.iltkidzone.co.nz](http://www.iltkidzone.co.nz)

### TEMPORARY ROAD CLOSURE



Colac Bay Foreshore Road will be temporarily closed to normal traffic east of Colac Bay Road between the hours of **7am and 6pm** from **Monday 4 July until Friday 21 of July** to enable maintenance to the seawall.

Please note, sections of Colac Bay Foreshore Road will be under manual traffic control during this work.

A detour will not be available and only affected residents will be allowed access during the closure.

Access to the boat ramp will remain open.

### WE WANT CONTENT CONTRIBUTORS!

Are you interested in being a regular or semi-regular contributor of content for the Western Wanderer?

We're looking for people who would like to provide a short article/piece of reading for each monthly issue.

(It doesn't have to be every month - we can be flexible!)

Get in touch with us at [yourwesternwanderer@gmail.com](mailto:yourwesternwanderer@gmail.com)



## Can You Help?

*Lloyd Esler, Author, Historian*

My current book is 'West to the Waiau' - the story of the lower Waiau Valley, basically below the Mararoa weir and including the whole of Te Waewae Bay. It should be finished by the end of the year.

My current book is 'West to the Waiau' - the story of the lower Waiau Valley, basically below the Mararoa weir and including the whole of Te Waewae Bay. It should be finished by the end of the year.

It covers the natural history and settlement and development of the valley - not so much the story of Tuatapere which has been told elsewhere. I have had a good response to my request for information and photos but I'm still looking for photos or postcards of the following:

*Happy Valley School, stranded whales, trains, boats on Lake Hauroko, Monowai Power project, floods, the wrecked dredge at the rivermouth, shipwrecks, goldmining, toheroas on Bluecliffs Beach, the old Clifden homestead, the Limestone Gorge, Ohai coalmining, lime kiln at Clifden, beech forestry operations, Orawia cement works, pig, deer and chamois hunting in the catchment and the river before the power project.*

I'm also in need information on the opening of the road through the top of the valley to Manapouri and the 1961 book '50 years of Education in the High Country.'

Any help much appreciated.

Please ph (03) 213 0404 or email me at [esler@southnet.co.nz](mailto:esler@southnet.co.nz)



## AUGUST IS DAFFODIL MONTH

*Isobel Green, Tuatapere Branch, Cancer Society*

I will be going around, as usual, taking orders for fresh flowers - \$20 for 20.

Orders have to be in by **5th August**. You can purchase online if it suits, or give me a ring on (03) 226 6065

We are having two fundraising quiz nights:

**18 July** - Tui Base Camp, Tuatapere  
7:30pm start. \$5 per person.

**4 August** - Orepuki Hotel, Orepuki  
7:30pm start. \$5 per person.

**Any donations for the Raffle table will be greatly appreciated.**



Our Street Stall will be held on **Friday 26 August, 10am - 4pm** outside Tuatapere Four Square. Baking, Raffles & Goods.

**Any donations would be much appreciated.**

Please support this greatly needed society. All money raised is kept in Southland.



 **Cancer Society**  
**Daffodil Day**  
Friday 26 August 2022

### Pre-order Fresh Flowers

For \$20 including free urban delivery, you can brighten your workplace with a bunch of 20 daffodils and support the Cancer Society of Otago & Southland

*Credit/debit card or invoice (bank transfer) available*

Order online by **Friday 5th August** at  
**[daffodilday.org.nz](http://daffodilday.org.nz)**

Delivery will be made week of 22nd August in time for Daffodil Day



Questions? Please contact:  
[info@cansoc.org.nz](mailto:info@cansoc.org.nz)

 **Cancer Society** | **ANZ**  
Major Sponsor

# Tuatapere Freight

LOCALLY OWNED & OPERATED

RUNS MONDAY TO FRIDAY  
WEEKENDS BY ARRANGEMENT

**Phone Brandon**  
**027 436 4360**



## Shearing magazine

**Des Williams (editor)**

Tel 07 839 2891 : Mob 0274 833 465

Email : shearingmag@xtra.co.nz

Member NZ Guild of Agricultural Journalists and Communicators (Inc)

**LAST SIDE PUBLISHING LTD**

PO Box 102, Hamilton 3240, New Zealand

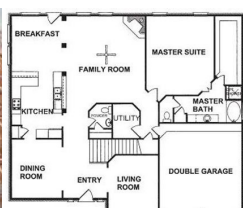
## PAUL ANDERSON BUILDER

AVAILABLE FOR ALL YOUR  
BUILDING REQUIREMENTS.

NO JOB TOO SMALL.

COMPETITIVE RATES.

REFERENCES AVAILABLE!



**Mobile: 027 890 3602**

thetakis@outlook.com

### IN & AROUND THE COMMUNITY

## Tuatapere District Lions Hay Day Results 2022



**Conventional Hay** 1st Phillip Erskine  
2nd George Broughton  
3rd Stephen Crack

**Whole Crop** George McMeekan

**Lucerne** Andrew Cade

**Baleage** 1st Tom Cruise  
2nd Richard Greer  
3rd Nicol Horrell  
4th Bart Egerton  
5th Allan Patterson

**Large Hay** 1st Ayson Gill  
2nd Neville Ferguson  
3rd Hayden Schmidt

**Best Chow** 1st Richard Templeton  
2nd Kelly Farms

**Tallest Chow** 1st Kelly Farms  
2nd Gray Wilson

**Heaviest Fodder Beet** Cade Family

**Heaviest Swede** 1st Marianne Venekamp 11kg  
2nd = Minessa Erskine 10.8kg  
= Craig Warrener 10.8kg

**Best Turnip** Mathew McLennan

**Jim Beam Raffle** William Mertens

### The average prices were:

Baleage @ \$126.00

Conventional Hay @ \$16.00

Conventional Lucerne @ \$31.00

Round Hay @ \$150.00



## The Seven Girls on the Rubbish Challenge

*Karina Gerzabek*

This month, there have been three groups working together, collecting rubbish.



More precisely, seven girls, grouped into three teams, the two oldest, the two middle ones and the three smallest. The challenge was about which group could fill their rubbish bag the most, within an hour.

### The Oldest:

We climbed under the bridge where the Waiau River runs through. There was so much rubbish that the bag was full within 30 minutes. The bag was so heavy that we had to drag it back together and could only walk very slowly so the sack would not tear open. On the way home we walked along the street and saw even more rubbish, lying under the bushes. We crawled under the bush and got out all the garbage we could find. The rubbish bag was now so full that we had to carry some of it by hand. When we got back to the house, the middle ones were already there. Their rubbish bag was also filled to the top.

### The Middle Ones:

We first walked along the main road and afterwards behind the school on the small hiking trail. We separated and went different ways to find more rubbish. It worked quite well, as only the last part of each of the paths overlapped. We didn't find any rubbish where the path overlapped. But we were not sad because it was wonderful to see how beautiful a road without rubbish can be!

### The Smallest

We walked along a road that we didn't know because we only recently came here. In any case, we passed by the Tui Base Camp. The way seemed very long to us, but we had fun collecting the rubbish together, in the Winter air and doing something good for our earth. Most of the rubbish was still very new and fresh, because we could see what kind of packaging it was. When the rubbish bag was full we went back to the house. The other two teams were already back by then. We saw that the rubbish bags were filled by both teams.

## Rubbish Challenges

This should be a mission for every child. By every child I mean every single human, because we are all children of Mother earth.

I want to invite YOU to come & join us 7 girls to pick up the rubbish from Tuatapere, so that the next generation has a nice clean earth to live on.

Imagine if every town did rubbish challenges, then our earth would be super clean, tidy and healthy!

Every Friday afternoon at 4pm we will have the 1 hour Rubbish Challenge.

### MOUNTAINS EDGE CABINS MONOWAI



Hunting, Fishing, Mountain Biking, Kayaking & Tramping Cabin Accommodation

12 Cabins  
Double and Single Available  
\$35.00 per person per night

Eftpos available

Full Kitchen Facilities, Showers, Toilets, Playground & the Tennis Courts right across the road!

We are 'pet friendly'

www.mountainedgecabins.com  
Email: mountainedgecabins@gmail.com

75 Turbine Drive, Monowai. Ph. 03 225 8267

## WESTERN ELECTRICAL

2008 LTD

Electrical Solutions

Domestic | Industrial | Commercial

**Quality Service at Competitive Prices**

- New Builds, Rewiring & Alterations
- Dairy Shed, Farm & Industrial Maintenance
- Hotwater Element Replacement
- A/H Call Out Service Provided



**Ph 03 225 8974 / 027 439 3787**

**Fax 03 225 8973**



**MR STEEL**

TUATAPERE

**PH: 027 276 6816**

MALCOLM

For all your engineering,  
steel fabrication and repair needs!

## FORDE SHEARING LIMITED

Available for all new and existing clients

For all your shearing and  
crutching requirements

Please phone Darin or Julie Forde

(03) 235 8853

027 229 7760



**BEN MCMASTER  
BUILDING**

Ph: 027 202 7955

benmcmaster@live.com

- Licensed Building Practitioner
- Sheds, renovations & new homes
- Based in Western Southland

*You dream it, we'll build it*



## Ice cream & Milkshake Parlour

**16 Orawia Road**

**6am - 4pm**

**Everyday**

**Milkshakes Ice Creams**

**Waffles Crepes**

**... and more ...**

*Home-made food to warm the heart  
and fill the stomach with some of the  
best coffee you've ever had here in  
Tuatapere, Western Southland*

## SPECIAL HISTORICAL FEATURE

*The following article is a continuation of a series contributed by George Charlton featuring 'Movers and Shakers' who have contributed richly to the Tuatapere community.*

*The article below first appeared in the 'Fiordland Focus' publication in November 2009. It is a very interesting account of the history behind the 'Southern Scenic Route'.*

## The Southern Scenic Route

The Southern Scenic Route was initiated from an informal gathering between friends at Tuatapere in November 1985. The idea for the Southern Scenic Route concept was discussed by

**John Fraser, Keith Egerton and Colin Green.** The official name 'The Southern Scenic Route' was adopted with the helpful input from well-known Waiau Hotel Proprietors from Tuatapere - **David and Pam McNay.**

The decision was confirmed at a public meeting in the township of Tuatapere in January 1986. The next step was to gain acceptance for the proposals from the local community councils from the townships that were situated along the route. The National Roads' Board, NZ Tourist and Publicity Department and the Automobile Association were also contacted. The Riverton Business Association was sent a letter from **John Fraser**, President of the Waiau Tourism Group requesting the opportunity to address their members to outline the concept to gain their support. He also asked them to become part of a combined group to promote the project. Riverton members accepted the idea and the Riverton Promotions' Group was formed, with local businessman **Wes Browning** elected as Chairman.

The project was a 'first' for New Zealand and, at times, getting official approval was slow and tedious. The Roads' Board rejected the application but the strong determination of **John Fraser** and his committee to see their idea come to fruition meant that they were not prepared to concede defeat. To incorporate the Eastern section of the Southern Scenic Route **Wes Browning,**

**John Fraser** and **Edwin Lewis** of Southland Promotions' established the Southern Scenic Working Party. They travelled to Owaka and Balclutha to promote the concept. For the concept to flourish it was imperative that adequate signage was placed along the route to make it user friendly for visitors travelling the route. John Fraser then travelled to Wellington and addressed the Highways Board Signage Committee. However, the wheels of officialdom were moving too slow for some members who took matters into their own hands. Signs appeared mysteriously overnight at strategic places much to the surprise



of local authorities. Kiwi determination to get the job done one way or another had surfaced!

**Alex Miller, Val McKay, Stan Bulling, Wes Browning** and **John Fraser** played a major part in a very active midnight team. Gradually a ground swell of enthusiasm had developed.

The Automobile Association agreed to provide some signage and help with the funding of an information brochure along with other government agencies. Finally, after four years of planning, dreaming, holding meetings, discussions with bureaucrats and generally promoting the concept to anyone who would listen, the Government finally acknowledged the Southern Scenic Route. At the suggestion of **Wes Browning**, to gain the maximum national media exposure possible, an opening ceremony would be held at both ends of the route. One was held at Te Anau/Manapouri State Highway intersection on Sunday 6th November 1988 and was officially opened by MP Derek Angus. Other invited speakers were Dave Moss, Fiordland Promotions Association Chairman; Frana Cardno, Te Anau Community Council Chairperson; Peter Wilding, Les Hutchins and Edwin Lewis. Mr Russell Powley, Chairman of the Clutha County Council officially opened the Balclutha end.

After the official ceremony was finished two buses left Te Anau and one left Balclutha carrying members of the public, invited guests and news media representatives on a tour of the Southern Scenic Route and met at Stirling Point, Bluff.

The Western buses stopped at Riverton where the Riverton Area Promotions' Group marked the occasion by officially opening their Information Kiosk. This ceremony was performed by Mrs Phyllis Hopgood, Chairperson of the Riverton Community Council.

The success of the 'Southern Scenic Route' is now widely acclaimed as becoming one of New Zealand's most popular visitor routes, with Dunedin being included on the route from 1998. The recent funding from the Government of \$50,000 has allowed for the uniformity of signage throughout the route. March 2nd, 2008 was another milestone for the Southern Scenic Route with the official opening of Finlayson Road. The 10km road runs between Taieri Mouth and Waiholā, marking the end of a 2.2 million sealing project that finished off the final leg of the Southern Scenic Route. Clutha District Council Mayor Juno Hayes did the honours with the help of Finlayson Road resident Keith Bunion and his three year old twins Blue and Stevie Gunion. The route is also recognised in maps and guidebooks and the number of tourists is increasing!



**Phone: Anita Green 027 506 2418**  
Tuesday 9-5pm, Thursday 10-8pm, Friday 10-5pm - Appointments are encouraged.

## CHAMBERS REPAIR SERVICE

**45 Half Mile Road, Tuatapere**

**Ph: (03) 226 6654**

- 24 hour Self Service Fuel
- Full Mechanical Workshop
- NZ Post Centre
- Agents for Wide Span Garage
- MTA Gift Vouchers available



### Duck Shooting Season

Duck Licences (for the season)

**Cost: Adult \$100, Junior \$23, Child \$4**

### Daily Limit per day

10 Mallard, 6 Paradise, 5 Black Swan

**Day Licenses now available**



PASTURE METER READING THAT'S QUICKER AND EASIER, WITH AT THE GATE REPORTS

- Specialist in quality pasture meter reading with advanced sensor technology
- Provide 200 measurements per second or 18,500 readings over a single 500m pass
- Provides a fully integrated electronic support system
- Provides a secure web-based storage of information with easy access
- Prompt generated feed wedges for rapid decision making and seasonal comparisons
- Generate reports at the gate, supplying valuable pasture cover data and comparable results every time
- Improve heath & increase animal hydration
- Enhance production & improve water quality
- Reduce bacterial/algae contamination of trough water

### CLEAN TROUGH WATER MEANS IMPROVED LIVESTOCK HEALTH

Now 2 bikes available for pasture metering



**Brett George • P 027 351 3408**

**E [platemetterservices@gmail.com](mailto:platemetterservices@gmail.com)**



# Waiau Town & Country Club

**Meals (homemade goodness)  
available Thurs, Fri, Sat & Sun  
from 5pm to 9pm\*.**

(\*Bistro may close from 7:30pm onwards if not required)  
Family Friendly | Happy to cater for dietary requirements.  
Please pre-book for groups of 8 or more.

## Club Opening Hours:

**Mon - Thurs 4pm till close.**

**Fri 3pm – close.**

**Sat Noon – close.**

**Sun 3pm – close.**

**Book now for functions/birthdays etc**

We can cater! Call to discuss options.

**03 22 66 489**

## What's on at the Club:

**\*SUNDAY FUNDAYS - starting July**

Kids are ½ price with Free Sundaes, Bouncy Castle, and Face Painting

**\*DESSERT EVENING – Friday 16th July**

7:30pm \$25 per person - all you can eat desserts!  
All Members & their Invited Guests welcome!

**\*STEAK NIGHT – every Thursday night  
only \$25 for a delicious steak meal.**

**\*INDOOR CHESS – Previously at Last Light Lodge  
Moving inside for Winter - **Sundays 3-5pm****

**\* MEMBERS DRAW & RAFFLES**

drawn every Friday night! Approx. 7.30-8.30pm.  
Come in for a bite to eat and a drink, who knows  
you might be the lucky one to win \$\$!

**Keep an eye on our Facebook Page for  
more details on upcoming events**

**Annual Membership/Subscriptions**

*Everyone welcome to become a member,  
just pop in or call the club for a membership form.*

*Annual membership 2021/22 is  
\$50 p/p or \$30 for pensioners.*

Phone: **03 22 66 489** | Address: 41 King St Tuatapere  
Email: [waiautcc@gmail.com](mailto:waiautcc@gmail.com) | Facebook: [facebook.com/waiautcc](https://www.facebook.com/waiautcc)  
| Courtesy Van Available |

**We look forward to seeing you!**



**WAI AU AREA SCHOOL**

Year 1-13 Education

Live to LEARN, LEARN to Live

## Kia ora Western Wanderer Readers!

### Room 1

Room 1 kicked off Term 2 by carrying the wreath we made in the local ANZAC Day parade, the students done themselves and WAS proud. We trained hard for the Cross Country and it paid off with three Room 1 students coming 1st in their age groups and all students giving it their best effort!

We have been studying different countries this term and have been transported to some amazing places like England where we enjoyed a royal tea party, Italy where we made and sampled pasta & pizza and Japan where we practiced origami and made sushi. We can't wait to see what exciting learning is in store for us next term!



### Room 2

Kia Ora, Room 2 has had another stellar term! We've been learning a lot about the world through science and have been expanding our procedural writing skills through "How to" writing activities. For science Room 2 has been learning about the weather, natural disasters, and animal habitats. As scientists we've conducted our own environmental experiments such as creating rain storms and building volcanos. While learning the process of procedural writing we created cake's in cups, using our own recipe's. Which we got to eat at the end, Yum! The students are now using what they have learned to write their own "How to's".





### Room 3

Room 3 have had another action packed term. At the start of the term we explored Antarctica. We got to meet two scientist who have been there via Zoom who shared their experiences. We are now learning about Matariki. Check out the Matariki Wishing Stars along with our visual pepha below.

We are now onto our second Chapter Chat book. The first being "A kind of Spark" by Ellie McNichol. One student said " I liked this book because it reminded us to respect everyone and admire that everyone is different". Now we are reading "The Malamander" by Thomas Taylor.

Some other highlights include:

"I really liked doing isometric drawing on the Chromebook" ~Hamiora.

"I have enjoyed researching a Scottish Landmark and then making it on Minecraft" ~Madisyn.



### Room 4

Room 4 has been busy sewing, learning to cook, and competing in the Young Einsteins Competition this term. It is great to see our students showing leadership qualities.

Leighton did us proud at the Southland Cross Country. Next Term we have Rooms 2,3 & 4 off to Omaui Camp. This will be an exciting time. At the end of this term the Magician ElGregoe is going to be entertaining us.



# Alex Reid CONTRACTING

**Paddock Cultivation from  
Ploughing to Sowing  
Dry Hire available  
Aerating  
Direct Drilling  
Ridging  
Mulching**



### Dairy Lane Maintenance

Tip Trailers • Vibrating Roller • 2 Tip Trucks

### Sheep Conveyor

Drenching, Vaccination etc • 3 way draft

### Large Skid Steer for calf shed cleaning, loading Muck Spreaders etc

4 Muck Spreaders • 16,000 litre Slurry Tanker  
Pond Stirrer • Umbilical Slurry System



**PHONE ALEX  
0212775308 CELL  
03 2255377 HOME**



*Lynley McKerrow*

Celebrant  
Funeral and Marriage

P: 0272 974 767  
E: nanamac60@xtra.co.nz

*with care - with love - with dignity*



## IN & AROUND THE COMMUNITY



# Local Community Elections

The 2022 election is your chance to run as a candidate and help make decisions that will strengthen local communities and ultimately shape Southland's future.

**The decision to stand in an election should be applauded as it shows you want to make a difference.**

As an elected member, you will play a key part in the future direction of New Zealand's largest district geographically by helping to manage Southland's assets worth \$1.5 billion, deciding how money is spent on projects, supporting our communities and local businesses to prosper and determining how to meet the current and future needs for infrastructure, public services and regulations.

It's always a good idea to do your homework and find out what's important to your local community. Chat to a variety of people and discover what matters to them.

Take the time to learn more about Southland's local government structure and the role of councillors and community board members. If you haven't already, tune into a Council or community board meeting and see what it's all about.

If you've decided to run as a candidate for Southland District Council, here's an important checklist to start with. To be a candidate for an elected member position, you must be:

- a New Zealand citizen.
- over 18 years old.
- enrolled on the electoral roll.

If you tick all the eligibility boxes, it's a straightforward process to officially become a candidate. Just follow these simple steps:

- Complete a nomination form before **12 August 2022**
- Get two people to nominate you - they must be over 18 and enrolled to vote in the area you wish to be a candidate for.
- Pay a nomination deposit of \$200 - you may get a refund, depending on how many votes you receive.

To help make an informed decision and learn more about the roles available, there's plenty of information on our website for both candidates and voters.

16 Check it out at [www.southlanddc.govt.nz/elections](http://www.southlanddc.govt.nz/elections)

## TUATAPERE HANDYMAN SERVICES

**Barry Bennett**  
**(03) 226 6730**

- **Painting - Interior/Exterior**
- **Waterblasting**
- **Spider & Fly Spraying**
- **General Repair Work**
- **Lawnmowing**
- **Weed Spraying**



## RAW FARM HOMEKILL

Wayne Saunders  
Qualified Butcher

027 457 6350

rawfarming@yahoo.co.nz

82 Clifden Highway  
Tuatapere



Cut up the way you want

Beef

Pork

Sheep

Venison

Other game meats

Traditional Smallgoods

Remember to  
ring & book in  
your beef!  
It's getting  
busy!



## Slow Cooked Creamy Potato and Leek Soup

*On these cold days what is more perfect than coming home to this easy slow cooked soup.*

### Ingredients

- 25 grams butter
- 2 leeks, white & light green part only
- 3 teaspoons garlic
- Potatoes, approx 5 medium
- 2 teaspoons dried oregano
- 2 teaspoons dried thyme
- 1 teaspoon salt
- 4 cups chicken stock
- 1 cup cream



### Method

1. Finely slice the leeks.
2. In a frying pan add the butter and melt over medium heat.
3. Add the leeks to the melted butter and stir over medium heat until they begin to soften, approx 4-5 minutes.
4. Once soft add the garlic and cook for 1 more minute.
5. Add the leek mixture to the slow cooker.
6. Peel and dice the potatoes into chunks and add to the slow cooker.
7. Add the oregano, thyme, salt and pepper.
8. Pour over the chicken stock and stir.
9. Place the lid on the slow cooker and cook on low for 5 hours or until the potatoes are tender.
10. Using a stick blender, mix the soup until smooth.
11. Add the cream.
12. Serve with crusty bread. Enjoy.



**HM HARRY'S**  
EARTHWORKS  
027 304 3714




\* 13 Tonne Digger \* 5.5 Tonne Digger \* 2.7 Tonne Digger- dry hire or operated  
 \* Tip Truck \* Bob Cat \* Augers \* Post Driver \* Tree Saw & Hedge Trimmer

\* Tree Trimming \* Post Driving \* Fencing \* Cleaning of Wintering Sheds \* Site Clearance \* Cartage \* Graveling \* Lane Maintenance \* General Earthworks

For all enquiries and bookings please contact Lance or Alice Harris  
 Lance: 027 304 3714  
 Alice: 027 270 0363  
 Email: lanceharris533@gmail.com  
 Check us out on facebook- Harry's Machines

### CHAINSAW SHARPENING

All chainsaw chain sizes precisely sharpened and rakers taken down accordingly, guaranteed results  
**Chain only \$10 Taken Off & Refitted \$13**  
 Please phone **027 308 2501**

### WANTED TO BUY

Possum Fur, Hard deer,  
 Antler, Deer Velvet.  
 Phone Leith 027 496 3721

## WAIAU VALLEY SHEARING LTD



**Simon de Vries**  
**Julie Heaps**  
**027 840 9867**  
**03 226 6212**





**Rabco Ag Ltd** – 021 362 766 – [admin@rabco.nz](mailto:admin@rabco.nz)  
Agricultural Contracting Specialists - Western Southland



**Full silage  
& baling  
service**



**Cultivation – including Direct Drill & Precision Drill**



**Effluent – Excavators - Hedgetrimming**





## SPECIAL HISTORICAL FEATURE

*Continued from last month's issue ...*

### If Tuatapere had a Mayor ...

Ngarita's 10 member Trust set out a target of \$100,000 dollars and hopes to begin the urgent repair work when the first forty thousand is in the bank. The job is not going to be an easy one. A simple blue gum trestle leg weighs about two tonnes. There are heavy engineering problems to be solved at every stage of the restoration. In 1990 the New Zealand Institute of Professional Engineers recognized the structure as one of this country's 50 great engineering works. Dixon hopes such organizations will become actively involved in the preservation project and also companies and families with historical associations with the Mill. "Tuatapere's National Bank is taking donations", she says.

The meeting to set up the Trust drew nearly 70 people; among them grandchildren of the Craig brothers after whom the Mill town was named and a 70 year old former mill worker 'Minty Hughes' who started his working life as whistle boy on the Lidgerwood Hauler. Today a new generation of rugged outdoors people are treading the tramlines which ran from the Mill. The Tuatapere Wild Challenge race attracts such as Steve Gurney, Russell Prince and Penny Webster. Triathletes paddle kayaks from Lake Hauroko down the Wairaurahiri River through Waitutu forest to the sea. They run over the tramlines and viaducts to Te Wae Wae Bay then mountain bike along beaches and through farmland to Tuatapere. Over 100 townspeople are involved in race administration and catering and the event has featured on national television.

Tuatapere's Promotion Group has commissioned a feasibility study on constructing a new section of tramping track from the viaduct over the spectacular Hump Ridge back to Te Wae Wae Bay. They see the loop as a potential rival to the popular Kepler Track which has provided service jobs in Te Anau, 10 kms to the north. But for now they are focussing their efforts on the restoration project recognizing the need to secure first their trump card. Last month Southland's Port Craig Viaducts' Trust kicked off with a \$20,000 grant from the Department of Conservation.

## INDEPENDENT MIDWIFE

**ISOBEL DEVERY**

*Caring for women throughout  
Pregnancy, Birth till six weeks  
Post Natal.*

*Choices for place of birth,  
Home or Winton Birthing Units  
or Kew Hospital.*

*Free pregnancy tests  
available on request.*

**Phone: (03) 22668822  
027 2267020**

©Peecears, EthicGraphics®

### Sewing and Mending Services Available

Experienced machinist offering fast, reliable service with very reasonable rates.

I will mend/make anything from zip replacements to curtain making - just ask!  
Free quotes and pick-up delivery service within Tuatapere.



Contact **Deborah**

**(03) 226 6783 or 021 0305 667**



## DAGWOOD DAGGING

*Available now to all new and existing  
customers for all your crutching  
requirements.*

*3 Stand or Single trailer available  
7 days a week, wet or dry.*



*No job too big or too small.*

Competitive rates

**Jeff Chambers**

**027 3042 241**



*Shirley Whyte*  
Your local realstate specialist living & working in Western Southland  
now also an Accredited Justice of the Peace.



for:  
Friendly service, reliability, sound local knowledge  
in Western Southland, Te Anau & Stewart Island  
All enquires welcome - all calls answered



M 027 504 52200 O 03 214 4080  
E shirley@harcourtsinv.co.nz  
W www.harcourts.co.nz

Kia ora, Ni hao, Kamusta  
Western Wanderer Readers



**Hauroko Happenings**

This Term we have relished opportunities to get out and about while also welcoming our families and friends back onsite. **"Nāu te rourou, nāku te rourou, ka ora ai te iwi With your food basket and my food basket the people will thrive."** This whakatauki is HVP in action as we flourish with our home and school community relationships! Thanks!

**Kowhai** redeemed their prize at Bill Richardsons Transport World for winning the "Design a Dream Vehicle" competition. Joc (Bill's daughter) read "Tex the Tanker" and Steve and Joe from MoreFM joined us to 'find the wheel' hunt. It was a superb day of exploring!

**Matai** writers have explored red, white, and blue sentences "During the rugby game, I tackled, was in scrums, and scored tries". By Griffin and "Southland's weather is cold, rainy, and sometimes windy". Aydee and Isaac. They can also use W-starts, "With great excitement, I scored my first try in tackle". by Oscar.

**Totara** flexed their creative muscles to design amazing Pink Shirt Day T-shirts, each unique with written pledges for unity within class! Task Master Tuesday is also a hit as students work as a team to complete challenges with a healthy dose of competition.



Specialising in  
Dairy Conversions  
Rural Fencing  
Post & Rail



**H Gill Fencing,**  
Eastern Bush  
Phone 021 225 5489  
After Hours 03 225 5488  
Email hamish@hgillfencing.co.nz

**accelerate**  
PHYSIOTHERAPY

office@acceleratephysio.co.nz  
60 Deveron Street, Invercargill  
(off street parking)  
**0800 291 475**

Accelerate is a gentle form of exercise, effective in providing long term solutions after an injury, especially low back pain.



We have interests in:

- > Spinal/Back & neck injuries
- > Sporting Injuries
- > Running, Cycling & Multisport
- > Men & Women's Pelvic Health
- > Acupuncture
- > Balance & Dizziness
- > Workplace Injuries / Ergonomic Onsite
- > Work Evaluations & Educations
- > Pilates

Joel Barnes  
BPHIT, BEXSL

Andrea Robertson  
BPHIT, PG Cert ACUP

Andrea Murray  
Dip PHIT Dip M.T.

Find us on facebook

www.acceleratephysio.co.nz

# Hauroko Happenings



**Rata** attended National Young Leaders Day. This is always a highlight on our Year 8's calendar. Exploring the Scottish and Chinese History of Dunedin and local famous landmarks including Baldwin Street & Signal Hill engaged our students in Aotearoa Histories. Meanwhile, our Year 7's spent a day at Adventure Southland immersed in Leadership Training through high ropes, ultimate archery, and targeted team-building activities.

**General** - Young Einsteins was a fabulous general knowledge challenge with two Year 5&6 teams including - Sienna, Paetyn, Maddi, Ollie, Tomas, Axel, Briar, and Lucy. Our two Year 7&8 teams included Elly, Harry, Sophie, Addi and Hugo, Cormac, Finn, and Maddy. Both the Hot Shots x2 and High Flyers x2 impressed with their current event collaborations.

Several students excel at cross country with a squad of 25 heading to Western Cross Country. From here 9 runners (Fergal, Cooper, Hugo, George, Cormac, Daniel, Harry) qualified for Southland Cross Country. Superb results were achieved especially Lily C who placed in the top 5, and Lily E in the top 10 with most in the top 1/3 of the field with up to 70 runners in each event!

As the Term draws near we look forward to sharing kai with whanau for our Matariki Celebrations. This time will be spent reflecting on the past, celebrating the new and planning ahead. Nga mihi, Hauroko Valley Primary



We look forward to sharing more of our learning adventures with our Western Wanderer whanau soon!

ALWAYS OUR BEST



## Registered **ELECTRICIAN**

For all electrical work  
*No job to small*  
A/Hours service available

**Jay Brownlee**  
8 Carlyle Street, Tuatapere 9620  
A/H 03 226 6673  
Mob 027 4965 863  
sparkieintuatapere@gmail.com

For all your Accounting and Tax Solutions

Ask for Janice or Trevor England

**03 2266110**

Aparima Accounting Ltd  
57 Main Road Tuatapere

## CANTERBURY CARS **4WD** Specialists

For all your vehicle requirements

Cars, utes, 4WDs, vans

Finance available

**Contact: Murray Dowling**  
**027 556 2655**

Visit our website  
[www.canterburycars4x4.co.nz](http://www.canterburycars4x4.co.nz)



# WAIAU HEALTH TRUST – July 2022

## Medical Centre

### Flu Vaccines 2022

We are still offering flu vaccines, should you wish to book please phone to make an appointment.

We continue to offer Covid 19 vaccinations, please ring to make an appointment. We are also still doing supervised RAT's and PCR's, should you require any information regarding these please contact one of Practice Nurses.

**Liquid Nitrogen Clinic** is on Wednesday 22<sup>nd</sup> June – please phone and make an appointment.

We have been very fortunate to have Dr Murrey Allen working for us over the past few months. Murray is taking sometime off over July and August and will be returning to do regular with us until 31<sup>st</sup> October 2022.

### Men's Health Week

We offered Nurse Lead free WOF checks for our Men who are patients. This was free well received and I am sure many will agree it was a worthwhile check in with your Health and Wellbeing.

During the month of August, we are intending to put some focus on the Health and Wellbeing of our Women. Watch this space.....

### AFTER HOURS CARE

**Tuatapere Medical continue to offer an after-hours service. If you are unwell and require Medical Care or advise outside of our normal business hours, simply call 03 2266123 and you will automatically be connected to our afterhours Triage service. The qualified person will discuss your concerns and advise you of the process to be followed. If deemed, you need care they will contact our Practitioner who will then contact you direct.**

Should you have any questions or concerns I look forward to hearing from you.

Kind Regards

Jo Sanford (Manager)

Cell: 0272356190



**Waiau Health Trust**  
**69a Orawia Road, Tuatapere**  
**Approved Registered ACC Provider**  
**Monday to Friday**  
**9:00am – 4:30pm**  
**Ph.: 2266123**

*Practitioner Hours*  
*Amanda McCracken (NP) – every*  
*weekday*

*Sheryl Eden (NP –every Monday &*  
*Tuesday)*

**Physiotherapist**  
*Tuesdays & Thursdays*  
*Phone for an appointment*

*Podiatrist*  
*Visits regularly –*  
*Phone for an appointment*

*Warts/Minor Skin Lesions*  
*Liquid Nitrogen treatment available*  
*Phone for an appointment*

*Homebased Maternity Care*  
*We are offering this service*  
*in the patient's home.*  
*Please contact Jo Sanford*  
*on 2266123 for enquiries.*

*Day Activities Programme for*  
*the Elderly*  
*Every Tuesday & Wednesday*  
*Please phone for further information.*

*District Nursing*  
*Available as required by referral*



C: 0274 247 102

T: 03 225 8652

E: admin@drakeplumbing.co.nz

**KIERAN DRAKE**

Certifying Plumber  
& Drainlayer



Liquid Foliar Spray Contracting

- ✓ Fertiliser
- ✓ Fish Fertiliser
- ✓ Gibb & NBoost
- ✓ Herbicide
- ✓ Humates
- ✓ Soil & Herbage Testing

Jon – 021 575 071

# WaterForce

Irrigation Systems

Pumping & Filtration

Effluent Dispersal

Water Management

20 Winton Hedgehope Highway, Winton

03 236 9805 [www.waterforce.co.nz](http://www.waterforce.co.nz)

**0800 4 FORCE (4 36723)**

*Your Local Graphic Designer  
& Printing Specialist*

**McMAHON**  
design studio

**9 Cumnock Street, Wallacetown**

P: 03 235 8967 M: 027 242 8109



E: mcmahondesign@outlook.com



**FATHER'S DAY** **SUNDAY**  
4<sup>TH</sup> SEPTEMBER

*Dad:*

A SON'S FIRST HERO,  
A DAUGHTER'S FIRST LOVE

**Framed Wall Prints**

- A3, A4, A5 or custom size available

**Calendars**

- Wall, Desktop & Magnetic options

**Gift Cards & Tags**

- Customised with your photos/theme

**Cake Toppers**

**Printed Ribbon & Gift Wrap**

**Keyrings** - Acrylic or Metal

**Photo Books**

- Various binding and paper options available

**Canvas Prints**

**Coasters**

**Glassware & Mugs**

**Tees & Hoodies**

**Magnets**

**Vinyl Decals & Signs**

*Spoil him this  
Father's Day*  
We have some great gift  
ideas for you to  
choose from.

All of our artwork  
is customised designed  
to your chosen theme & all  
materials used in your order  
are carefully chosen to suit  
your project, so you can be assured  
that you will get the perfect gift  
for your loved one.

*We offer a wide range of printing and graphic design solutions.*

LOGO/EMBLEM DESIGN including full branding packages

ADVERTISING & SIGNAGE DESIGN

SOCIAL MEDIA GRAPHICS & EMAIL SIGNATURES

PHOTO EDITING & CUSTOM ART

CERTIFICATES - PRIZE CARDS - PROGRAMMES

WEDDING & EVENT STATIONERY

CALENDARS - BOOKLETS - REPORTS  
NEWSLETTERS - MAGAZINES - CATALOGUES

ALL OFFICE STATIONERY

PERSONALISED STATIONERY & CARDS

PRESENTATION & PROMOTIONAL ITEMS

**AND MUCH MORE...**

Get in touch with us today for your free consultation and quote!



# BARRETT *Ag* LTD

FULL SILAGE AND BALEAGE SERVICE



**ALL CULTIVATION**  
INCLUDING DIRECT DRILL  
AND STRIP TILLING - PRECISION PLANTING



**EXCAVATION**  
20 TONNE DIGGER/ GRADER  
D85 BULLDOZER/ ROLLER  
TIP TRUCKS AND TRAILERS



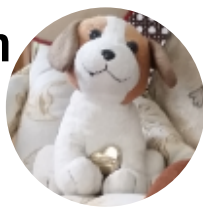
Barrett Ag Ltd  
Ph: Kahu- 027 5183 448  
E: [barrettagltd@gmail.com](mailto:barrettagltd@gmail.com)  
FB: Barrett Ag





# The Adventures of Charlton

I am on top of the world! I am sooo glad that you would like to hear some of my stories.



A few years ago, I was almost on top of the world, well, I could see it from where I was. Mount Everest is the highest place on earth and as you can see in the photo,



I am looking at it from a very high place as well. My owner walked with me in his backpack in Nepal all the way to Gokyo Ri and from there we could actually see Mount Everest. You know, when you look from here, you look at all

the other high places in front of it, so you have to go all the way up there to be close to it, and then you actually see it! It was very cold up there, and very interesting.

We did not have to carry all our gear, the tents, the clothes, or the food, no, Sherpas as the local guides are called helped us with all of this and more. We had such a wonderful time, except that it was very, very hard to breath. The air is said to be very thin up in the high mountains, and to take a single breath is at times extremely hard. But we made it! After we flew into Kathmandu, the capital city of Nepal, we took a really small plane to a place called Lukla, high up in the Mountains.

It is the most dangerous airport in the world. The runway was built by Sir Edmund Hillary, a New Zealand adventurer a long time ago. The runway is so short, that if you don't stop early enough, you run into a mountain; and if you fly out the other way, you could fall off the cliff. It was very, very scary. Then we walked a few days all the way to see Base Camp for the climbers of Mt Everest and back and have enjoyed almost every moment.

There was however a second when I thought my owner would have to leave me behind. He had asked an old lady in a small village if he could buy some salt from her to take back home. You know, up in the Himalayas they have mines that have lots of salt from ancient oceans in it, very good salt. Well, she said that she liked me very much and would love to keep me! Just imagine, me living in a small village near the highest place on earth right now! Good thing that he took hold of me and brought me back with him. Nothing but rocks and stones high up there in Nepal for me to look at, and snow and icy glaciers. And strange looking hairy cows called Yaks. They don't look at all like the cows here in Southland. I love it here, with my friend Moocow and all the cows in the green fields around me.

There are some really interesting books in your library, so if you want to know more about Mount Everest, Sir Edmund Hillary, and the Himalaya Mountains, sure to find one to read all about it. Stay safe and let me know if you enjoyed my short story from the top of the world.

## PROPERTIES WANTED!

Contemplating selling? You might be surprised by what your property could fetch on today's market

Contact Julie today for a free appraisal and to discuss how you could take advantage of this bouyant property market



**Julie Guise**

**021 256 4164**

**julieguise@sre.co.nz**

**SOUTHLAND REAL ESTATE LTD**  
Licensed under The Real Estate Agents Act 2008 MREINZ

**SOUTHLAND REAL ESTATE LTD**  
Licensed under The Real Estate Agents Act 2008 MREINZ

For all your fencing requirements

**WESTERN FENCING**  
SHEEP | DAIRY | DEER



Call BEVAN 0277 413 213

**ADS**

**ANDERSON DRAINAGE SERVICES**

*Keeping Southland Flowing*



Fraser Anderson

021 162 0210

fraseranderson1@gmail.com

Forest Hill, Southland

Follow us on Facebook

*Call us today!*

- Tile Cleaning
- Culvert Cleaning
- Septic Tank Blockages
- Domestic Blockages
- Rural Drain Blockages



# THIRSTY LIQUOR WINTER WARMERS ARE HERE!

 <p><b>Not Stocked</b> \$19.99 EACH</p> <p>Jim Beam Gold; CC Premium 7% 330ml 6pk cans</p>	 <p><b>\$19.99 EACH</b></p> <p>Tui Vodka Soda (ex bourbon) 7% 250ml 12pk can range</p>	 <p><b>\$22.99 EACH</b></p> <p>Jim Beam &amp; Cola; CC (incl zero) CC Soda &amp; Lime 4.8% 10pk cans</p>	 <p><b>Not Stocked</b> \$22.99 EACH</p> <p>KGB (incl Guaraná) 7% 250ml 12pk cans</p>	 <p><b>\$24.99 EACH</b></p> <p>Cruiser 5% 12pk bottle range</p>	 <p><b>Not Stocked</b> \$24.99 EACH</p> <p>ODD Company 10pk can range</p>	 <p><b>\$24.99 EACH</b></p> <p>Smirnoff Ice 5% 10pk bottles</p>	
 <p><b>Not Stocked</b> \$25.99 EACH</p> <p>Clean Collective 5% 250ml 12pk cans Rinse 6% 330ml 10pk cans</p>	 <p><b>\$27.99 EACH</b></p> <p>Long White 10pk bottle range</p>	 <p><b>Not Stocked</b> \$29.99 EACH</p> <p>Jack Daniel's Double Jack 6.9% (incl no sugar 375ml) 330ml 10pk cans</p>	 <p><b>\$13.99 EACH</b></p> <p>Stoneleigh Marlborough; Lighter ranges</p>	 <p><b>\$13.99 Not Stocked</b></p> <p>Villa Maria Private Bin range (ex PN/Syrah) Thornbury range (ex PN)</p>	 <p><b>Not Stocked</b></p> <p>Penfolds Koonunga Hill (Cab Sauv, Shiraz)</p>	 <p><b>\$14.99 Not Stocked</b></p> <p>Arrogant Frog Waipara Hills (ex Waipara Pinot Gris) range Da Luca Prosecco</p>	 <p><b>\$16.00 Not Stocked</b></p> <p>19 Crimes (ex Cali Red) range</p>
 <p><b>Not Stocked</b> \$21.00 EACH</p> <p>Brown Brothers Australian Tawny</p>	 <p><b>\$13.99 EACH</b></p> <p>Canterbury Cream 700ml</p>	 <p><b>\$39.99 EACH</b></p> <p>Gordons Pink; Orange; Sicilian Lemon 700ml Gordons &amp; Smirnoff 1L</p>	 <p><b>\$42.99 EACH</b></p> <p>Captain Morgan (incl Spiced) 1L</p>	 <p><b>\$42.99 EACH</b></p> <p>Absolut; Ballantines Beefeater 1L Beefeater 24 700ml</p>	 <p><b>\$47.99 EACH</b></p> <p>JB Devils Cut; JB Black 1L Makers Mark 700mls</p>	 <p><b>\$47.99 EACH</b></p> <p>JB 1.125ml</p>	
 <p><b>\$51.99 EACH</b></p> <p>Chivas 12yr 700ml Jameson 1L Jameson Black Barrel 700ml</p>	 <p><b>\$54.99 Not Stocked</b></p> <p>JB Double Oak 1L Haku Vodka; Roku Gin Ratu Rum range 700mls</p>	 <p><b>Not Stocked</b> \$54.99 EACH</p> <p>Malfy 700ml range</p>	 <p><b>\$57.99 EACH</b></p> <p>Jack Daniel's Haymans Gin 1L Woodford Reserve 700ml</p>	 <p><b>\$67.99 Not Stocked</b></p> <p>Johnnie Walker Black 1L</p>	 <p><b>\$69.99 EACH</b></p> <p>Jim Beam 1.75L</p>	 <p><b>\$13.00 Not Stocked</b></p> <p>Monteiths 6pk bottle &amp; can ranges (ex cider)</p>	
 <p><b>Not Stocked</b> \$14.99 EACH</p> <p>Kingfisher Strong 330ml 6pk cans</p>	 <p><b>Not Stocked</b> \$14.99 EACH</p> <p>Rekorderlig Ultra (berry; passionfruit) 6pk can range</p>	 <p><b>Not Stocked</b> \$19.99 EACH</p> <p>Tiger; Tiger Crystal; Crystal Ultra Low Carb 12pk bottles</p>	 <p><b>\$19.99 EACH</b></p> <p>Kiwi Lager 330ml 15pk cans</p>	 <p><b>Not Stocked</b> \$25.99 EACH</p> <p>Fortune Favours Puhoi Pilsner; Morning Cider 6pk cans</p>	 <p><b>Not Stocked</b> \$26.99 EACH</p> <p>Peroni 12pk bottles</p>	 <p><b>\$26.99 EACH</b></p> <p>Heineken Heineken 0; Light 12pk bottles</p>	
 <p><b>\$26.99 EACH</b></p> <p>Tui; Export Gold; Extra DB Draught 15pk bottles</p>	 <p><b>\$28.99 EACH</b></p> <p>Export 33 15pk bottles</p>	 <p><b>Not Stocked</b> \$33.00 EACH</p> <p>Haagen 24pk bottles</p>	 <p><b>\$37.99 EACH</b></p> <p>Lion Red; Waikato Speights or Summit (ex ultra) 24pk bottles</p>	 <p><b>Not Stocked</b> \$42.00 EACH</p> <p>Asahi 24pk bottles</p>	 <p><b>Not Stocked</b> \$43.00 EACH</p> <p>Steinlager 24pk 330ml bottles</p>		



Promotion period between 1/6/2022 to 30/6/2022. While stocks last. Promotion only available at participating stores. Please contact your local store to confirm whether they are participating in the promotion and check the pricing in-store prior to purchase. Online pricing will vary.

100% **NEW ZEALAND** OWNED AND OPERATED  
thirstyliquor.co.nz

FOLLOW US ON SOCIAL MEDIA



ASK ABOUT LOYALTY CARD BENEFITS & GIFT VOUCHERS





# Tui Base Camp



**Open from 8:30am every day!**

*Kitchen open until at least 7.30pm*

**Come in and check out our specials**

- ★ We have a new dinner menu out for winter – come in and taste the new dishes.
- ★ Waiau Valley Netball Club fundraising quiz on the **6th July** and Cancer Society on **18th**.
- ★ Oysters are still in stock.

**Don't forget we now have a mini-van!**

Contact us to organise a night out at Tui Base Camp (pick-up and drop-off).  
Enquires to **James 027 837 3521**

**For all of your dine in and takeaway requirements including:**

In-house roasted Amore Coffee  
In-house made pies, sausage rolls, cheese rolls  
Range of breakfast options  
Packed lunches  
Catering

**Phone: (03) 226 6250**

[www.tuibasecamp.co.nz](http://www.tuibasecamp.co.nz)



**Keep an eye on our Facebook Page for our latest updates!**



## Your help is needed to set the direction for freshwater

Now's the time to share your views on what the future of freshwater could look like in your part of Southland.

These visions will express the community aspirations for freshwater, in order to help guide freshwater management.

Southlanders have already told us a lot about what they want. This includes cleaner waterways for swimming, fishing and practicing mahinga kai (food gathering). Our waterways support food production, commercial and industrial use.

**In managing freshwater, we've already come a long way. Now's an important time to get involved.**

Ultimately we want our waterways to achieve a state of hauora – healthy resilience, where they can take a knock and bounce back.

To learn more and to share your vision for your area, **go to [www.es.govt.nz/know-your-wai](http://www.es.govt.nz/know-your-wai)**



**Share your views today**

[www.es.govt.nz/know-your-wai](http://www.es.govt.nz/know-your-wai) | 0800 76 88 45

## TUATAPERE OUTDOORS & HARDWARE

For all your

Gardening tools, lawn care, garden hoses, insect and disease sprays, potting and compost.

We have those building requirements for that weekend job with a good selection of silicone, nails, screws and bolts.

New fishing rods and reels, fishing lures, good selection of soft bait, fishing nets, flounder and eel nets.



Good selection of giftware.

Come in, check out what we have.

### Contact:

Judy **027 225 8192**

Paul **027 890 3602**

Shop **(03) 226 6363**

## YOUR BUSINESS CARD COULD BE HERE!

### CONTACT

**[yourwesternwanderer@gmail.com](mailto:yourwesternwanderer@gmail.com)**

## FOR PRICING/DETAILS



# 027 252 7933

- ☒ Renovations
- ☒ Extensions
- ☒ New Builds
- ☒ Sheds/Farm buildings
- ☒ Decks
- ☒ Pre-purchase house
- Inspections

*Call us for any building requirements*

*Ph 027 252 7933 email: aaroncbltd@gmail.com*

## SOUTHLAND DISTRICT COUNCIL

Te Rohe Potae o Murihiku



**George Harpur, SDC Councillor, Waiau Aparima Ward**

Greetings to all. Now that we have passed the shortest day and are subject to more daylight it may be a great time to contemplate on your future wellbeing and that of our great town. The town where once if a project needed done one of the local organisations did it with little fuss and with the cooperation of most of the local population. Locals did our gardens, our lawns, volunteered at the fire brigade, first aid and ambulance, Lions Club etc, and did many of the small repairs at various sites. Your local Community Board made decisions regarding what, where and why. Unfortunately, through central and local govt, reciting H & S, the Privacy Act, Waka Kotahi with their road to nowhere citing traffic management for gardens etc, preferred and registered trades personnel and management who like to be ... yeah well, things have changed. The days of doing more for less have developed into less for much more.

Fortunately, we have locals still running our library, a local Cemetery Trust, the Domain Boards at Clifden and Tuatapere. These facilities still operate at nearly a zero cost. The latter two will need some strong advocacy from the region to remain as is I feel.

The question needs to be asked - do you want the region to remain a strong, viable and vibrant place to live in and remain a service area for our outlying community? You all have a duty as a citizen to be an active part of this. The community needs you and you need the community for a succession plan for you and our future generations. Get involved.

In the last Western Wanderer, there were several comments on the upcoming Local Government elections. Representation in our general area is of paramount importance if we wish to be recognised as a forward-thinking region. At a council meeting recently during private discussion, two of the younger councillors who are involved with young children and social needs, cited some of their local projects with great enthusiasm. I was very impressed. I do not wish to imply that our members need replacing as that is up to you the voters, however I do believe that folks with children and have leanings towards Community Service should seriously contemplate putting their names forward for consideration for election come October. To those that say we are wasting our time, remember that you have a better chance of changing the system from inside the room so come on gals and guys.

**28 YOU CAN DO IT.**



**For Landscaping,  
Land Maintenance,  
Gravel Supply & Cartage**

**GRADES OF CRUSED & SCREENED GRAVELS,  
ALKATHENE LAYING, ROOTRAKING,  
FARM TRACKS, DAIRY LANES**



**ELEVATOR SCRAPER,  
BOBCAT & ATTACHMENTS,  
LANDSCAPING, TRENCHING AUGERS**

**Supplies of Gravel Ex Waiau River**

River Run Screened Grades Concrete Gravel Pea Gravel  
Rejects for soak holes Crushed - AP30 & AP65  
Peebles for Sheep and Cattle yards and calf sheds  
Fines suitable for cow lane capping

**K J SUTHERLAND  
GRAVELLING &  
AGRICULTURAL CONTRACTOR  
2475 OHAI-CLIFTON H/WAY  
ORAWIA RD2 OTAUTAU 9682**

**Ph 0274 367 934**

**K.J. Sutherland  
Contracting  
Bobcat T190**

**With attachments: Landscape Rake,  
Augers and Trencher**

**Suitable for all landscaping, shed and yard  
maintenance**

**Muck-spreader and tip trailer available**



**PHONE KEVIN  
027 367 934 / (03) 225 5716**

**MILLARS**

- PLUMBING
- GAS FITTING
- DRAINLAYING
- LICENSED BUILDER

Master Plumbers  
Ph 027 4340 705 or 03 225 8567



We specialise in:

**Resource consents  
Farm environmental plans  
Policy advice  
DOC concessions  
Landscape plans & assessment**

We take care of the paperwork,  
so you can do what you do best!

Sonya: 027 5050 077  
Rebecca: 027 4246 129  
www.slwp.co.nz  
Locally owned & operated



**Agricultural Contractors servicing Western Southland and beyond.**

**BALAGE - SILAGE - GROUNDWORK - FEED TRADING**  
**Nigel 021 226 6156 / [fowlecontracting@gmail.com](mailto:fowlecontracting@gmail.com)**





## Tim and Superior go the extra mile

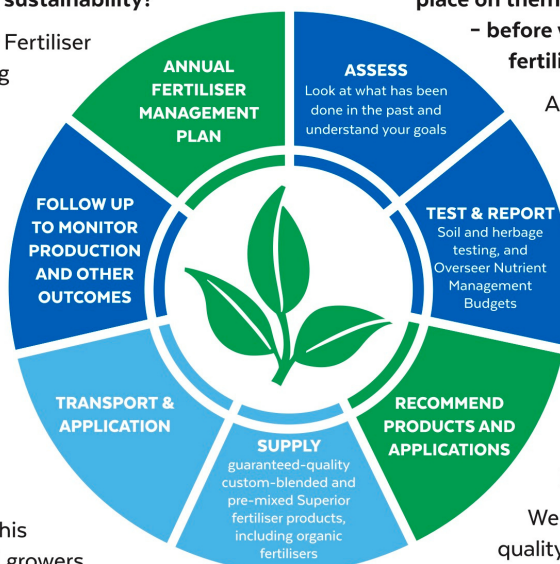
Are you frustrated with the lack of service from your local fertiliser consultant, peddling the same advice year after year regardless of your production outcomes, environment and sustainability?

Give **Tim Adcock** of Superior Fertiliser Specialists a call. He will bring a whole new meaning to service and client/advisor relationships.

Tim is a key member of the highly skilled Superior team totally committed to helping you develop healthier, more productive soils and plants.

We form a specialist fertiliser company that provides high quality advice and products at competitive prices. We have been doing this for South Island farmers and growers for just on 20 years.

Superior promotes a total soil care package. First, we get to understand the make-up, nutrient status and health of your soils, the demands you are going to place on them, and your production goals – before we apply one kilogram of fertiliser.



A comprehensive regime of vigorous soil tests will be undertaken and the results will provide the basis of a Superior Fertiliser Management Plan customised for your unique situation. This will complement your farm's Environmental Plan and provide the blueprint for an ongoing annual fertiliser programme.

We then supply guaranteed-quality solid fertiliser for your pasture and crops, monitor production and other outcomes, and update your Plans as required.

It's free to talk so don't hesitate to give Tim a call.  
Phone 021 418 224



**Tim Adcock**  
Fertiliser Advisor  
Otago/Southland  
021 418 224  
tim@superior.net.nz

 FERTILISER SPECIALISTS  
**SUPERIOR**  
[www.superior.net.nz](http://www.superior.net.nz)

# TUATAPERE SERVICE STATION

20 ORAWIA ROAD  
PHONE: 03 2266475

## HYDRAULIC FITTINGS & HOSES

WE STOCK A GOOD RANGE OF CRIMP ON HYDRAULIC  
FITTINGS FOR AGRICULTURE HOSES WE CAN ALSO  
REPAIR OR MAKE UP NEW HOSES

## FOR ALL YOUR MECHANICAL NEEDS

Car & 4WD WOF's  
Trailer, Caravan & Motor bike WOF's  
Servicing all vehicles  
Light Engineering  
New Tyres  
Electrical Work  
Scanning of most vehicles

## RIDGELINE CLOTHING

We have had new stock in of Jackets, clothing packs, stay dry  
trousers and fleece sweat shirts



NZ TRANSPORT AGENCY  
WAKA KOTAHI

### WE CAN PROCESS ALL YOUR

REGISTRATIONS  
ROAD USER CHARGES  
CHANGE OF OWNERSHIPS  
VEHICLE EXEMPTIONS  
CANCELATION OF REGISTRATION  
CHANGE OF HUBOMETER



### HOURS

Monday to Friday 8.00am to 5.00pm