



WESTERN Wanderer



Tuatapere | Clifden | Orawia | Blackmount | Monowai | Colac Bay | Orepuki

Cover Photo: Humpridge Track Fern Taken by (and used with permission): Dallas Templeton

Issue 245

At a glance ... what events are on this month?

JUNE 2022

MONDAY	TUESDAY	WEDNESDAY	THURSDAY	FRIDAY	SATURDAY	SUNDAY
		1	2	3	4 Live Music Triple Shot Tui Base Camp	5 Chess 3-5pm WTCC
6  QUEEN'S BIRTHDAY PUBLIC HOLIDAY	7	8	9	10 Second Hand PopUp Shop TPC Main Rd 2-4pm Tuatapere Lion's 30th Annual Hay Drive	11 Second Hand PopUp Shop TPC Main Rd 10-2pm Plaited Grass Basket Workshop 11am-3pm Scout Den Hall	12 Chess 3-5pm WTCC Western Districts Variety Club Hoe Down! Starts 12pm WTCC
13 Quiz Night Fundraiser for Tony McDonald 7pm Tui Base Camp	14	15 Otautau Museum Quiz Night 7:30pm Otautau Hotel Tuatapere & Districts Promotions Inc AGM 7:00pm WTCC	16	17 Second Hand PopUp Shop TPC Main Rd 2-4pm	18 Second Hand PopUp Shop & MARKET DAY 10-2pm TPC Main Rd Fancy Dress "C" Party WTCC - Best Dressed Prize!	19 Chess 3-5pm WTCC
20 Deadline for next issue content	21	22	23	24  MATARIKI PUBLIC HOLIDAY	25 Second Hand PopUp Shop TPC Main Rd 10-2pm	26 Chess 3-5pm WTCC AGM Waiau Town & Country Club 2pm
27	28	29	30	1 Second Hand PopUp Shop TPC Main Rd 2-4pm	2 Second Hand PopUp Shop TPC Main Rd 10-2pm	3 Chess 3-5pm WTCC
Coming up ...	Waiau Valley Netball Club Quiz Night 7pm - 6 July	Southland Multicultural Food Festival 2022 9 July ILT Stadium	Otautau Museum Book Sale 10-4pm 9-10 July AND 15-16 July Otautau Catholic Parish Centre	St John's Mental Health First Aid Course - FREE 13 July Otautau St Johns 8:30am - 4:30pm		

Special thanks to



SEE INSIDE FOR MORE DETAILS!
Want your event here? Let us know at
yourwesternwanderer@gmail.com

COMMUNITY NOTICES & EVENTS

HANDY PHONE NUMBERS

EMERGENCY

POLICE /FIRE/AMBULANCE: **111**

MEDICAL CENTRE: (03) 2266 123

TUATAPERE POLICE STATION:
(03) 2269 020

TUATAPERE COMMUNITY WORKER:
027 757 5983

HAUROKO VALLEY SCHOOL OFFICE:
(03) 2266 753

WAI AU AREA SCHOOL OFFICE:
(03) 2266 285

TUATAPERE CEMETERY TRUST:
(03) 2266 065

CHAMBERS SERVICE STATION:
(03) 2266 654

TUATAPERE SERVICE STATION:
(03) 2266 475

TUATAPERE FOUR SQUARE:
(03) 2266 898

TUATAPERE OUTDOORS & HARDWARE:
(03) 2266 363

Want to know more about the Hump Ridge Great Walk?

For information or to book/walk the Tuatapere Hump Ridge Track – please contact the Track Operations Office directly via www.humpridgetrack.co.nz

Project Webpage: Stay informed with the facts and news via www.doc.govt.nz/hump-ridge-great-walk-project

Project Email: Get in touch to ask questions or to be added to the newsletter distribution list via email: HumpRidgeGWP@doc.govt.nz

Media Enquiries: please direct to media@doc.govt.nz

Tuatapere & Districts Promotions Inc Notice of AGM

Wednesday, 15 June 2022
7pm at Waiau Town & Country Club

Roles vacant: President, Vice-president
(optional), Secretary

Tuatapere & Districts Promotions Inc

Paula McKenzie, President

Hello everyone!

In recognition of our first Matariki Public holiday later in the month we have purchased a new set of flags which will go up in a couple of weeks. We had hoped to be having a mid Winter festival but life and COVID seems to have got in the way. I see there are a few events coming up at Tui Base Camp and The Waiau Town and Country Club which will be great.

A huge congratulations to Lynley and Terry on the opening of The Well. I hear the waffles are pretty good!

A big thanks in advance to Christina Vaughan, Waiau River Care Group, who is helping us run a Community Flag Art competition. Exciting! More on that to come!

Currently a consultant is working on Main St Beautification and Railway Station. The consultant has been employed by SDC and is working in consultation with the Community Board. Tuatapere & Districts Promotions Inc are not putting any more resources into the Railway Project and I would like to thank everyone who has put their precious time and effort into the project to date. This includes those who took the time to comment/ respond to the survey we did. We now look forward to seeing what develops from here. At least the outside of the building will be tidied up in the interim with the Community Board approving unbudgeted expenditure of up to \$20,000 to carry out general maintenance, funded from the Tuatapere general reserve. (Community Board Meeting Agenda/Minutes are available to the public on <http://southland.infocouncil.biz/>)

With our Humpridge Track becoming a Great Walk in the 2023/24 season won't it be great to see SDC Open Spaces spend some serious money in Tuatapere?

The local body elections are later this year. If you are like me you probably don't understand how it all works and therefore wouldn't even consider going there! The Western Wanderer will be running articles for the next three months to hopefully give everyone some idea of what it's all about.

This is my last blurb as president of promotions as I am stepping down at the AGM in a couple of weeks. A huge thank you to the entire Promotions team for your support these past three years. It's time for a young fresh face at the helm!

Role of the Tuatapere Te Waewae Community Board

Local Body Elections Special Feature - Part One

Community boards are the link between Council and the communities we serve. They have a good overview of council services and have intimate knowledge of the community they represent.

Community boards are there to represent and support your community's interests and connect you with the wider Southland District.

Key Functions of a Community Board

To promote the social, economic, environmental and cultural well-being of local communities and in so doing contribute to the realisation of Council's vision of one District offering endless opportunities

- to provide leadership to local communities on the strategic issues and opportunities that they face;
- to be advocates and representatives for their local community and in so doing ensure that Council and other agencies have a clear understanding of local needs and aspirations;
- to be decision-makers on issues that are delegated to the board by Southland District Council;
- to develop relationships and communicate with key community organisations, special interest groups, residents and businesses within the community;
- to maintain an overview of the services Council delivers to its communities and assess the extent to which these services meet community needs; and
- to recommend the setting of levels of service and budgets for local activities.

The community board shall have the following delegated powers and be accountable to Council for the exercising of these powers.

In exercising the delegated powers, the community board will operate within:

1. policies, plans, standards or guidelines that have been established and approved by Council;
2. the needs of the local communities; and
3. the approved budgets for the activity.

COMMUNITY NOTICES & EVENTS

We're Updating Our Community Contacts Handy Pull-Out Reference Guide

It's that time again we're updating our handy pull-out reference guide to local services, community groups, sports clubs, teams etc.

We try to include the guide twice a year, either in the July or August Issue and again in the February or March Issue.

It is AGM season so if details for your sport, club and/or committee have changed, let us know.

If we're missed your sport, club, group or committee - let us know! Send an email with the details to:

thisistuatapere@gmail.com

Help us to help others find your community group, service or sporting code!

TUATAPERE PLAYGROUP		
TERM 2, 2022 LEARNING PLAN		
THEME: SUPER SENSES — LEARNING THROUGH SENSORY PLAY		
TE WHARIKI PRINCIPLE FOCUS: EMPOWERMENT		
TE WHARIKI STRANDS FOCUS: COMMUNICATION & EXPLORATION		
Date	Theme	Activities
6 th May	Magnificent Mothers	Make something lovely to gift our Mums on Mothers Day.
13 th May	Frozen Eggs	Explore frozen balls of ice and discover what may be hiding inside! How will you get it out?
20 th May	Pink Shirt Day	Wear something pink to show your support & bring a gold coin donation - Speak Up, Stand Together & Stop Bullying.
27 th May	Sensory Texture Balls	Create sensory balloon balls with different textures using a range of fillers such as rice, cornstarch and play-dough.
3 rd June	Bubble Fun	Make a tub of bubbles and then experiment different ways of changing them... food colouring, glitter, shaving foam etc.
10 th June	Mud Glorious Mud	Create 'mud' using cornstarch and cocoa and then hold a muddy car race! Whose car will be the winner?
17 th June	Rainbow Spaghetti	Cook and then dye some pasta spaghetti then use it for sensory play.
24 th June	Matariki Public Holiday Observed	No Playgroup
1 st July	REAP Visit	Maere Day from REAP will be visiting with her heuristic play activities.
8 th July	Teddy Bears Picnic Day	We will celebrate the end of Term and world Teddy Bears Picnic Day by holding our own Teddy Bears Picnic.

TUATAPERE AMBULANCE

Did YOU Know?

The Tuatapere Ambulance is a funded service by the Tuatapere Lions Club, for the residents of Tuatapere & Districts.

Should you receive an account for this service from St John, please forward it immediately to:

The Treasurer

Tuatapere Lions Club

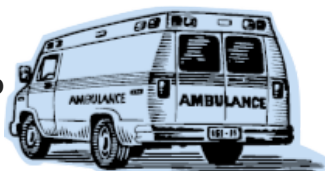
PO Box 47

Tuatapere

Sometimes we experience difficulty in receiving the invoices for YOUR trip - so PLEASE do forward them on to us.

Thank you!

**Tuatapere Lions Club Charitable Trust
Ambulance Committee**



COMMUNITY NOTICES & EVENTS

CALLING ALL LOCAL COMMUNITY GROUPS / SPORTING TEAMS/CODES ETC

It's free to advertise your local group, sporting team/code in the Western Wanderer! If you want to share the results of a game and/or tournament or celebrate the achievements of a team member or player - we can print that too! Email yourwesternwanderer@gmail.com by the 20th of the month prior & we'll also add any event notices to the Community Noticeboard for the next issue!

TUATAPERE PRESBYTERIAN CHURCH

Has it been a trying week? Is life a bit of a struggle?
Have things not quite gone your way?
Need somewhere to reflect and rest your mind?
Need to 'take a breath'?

How about joining with us for a time of quiet fellowship on **Sundays at 10.30 am** at the **Tuatapere Presbyterian Church, Main Street, Tuatapere**

A time to be, to reflect and refresh. There is a children's time where they can be in their own space too. All are welcome to join us.
Make new friendships, create new moments.

Need to know more? Phone or message
Lynley on 027 297 4767

ADDRESS NUMBER PLAQUES

Address number plaques can now be ordered through the Tuatapere Community Worker Support Trust. These can be clearly seen anywhere day or night. The number plaques are for properties. Each number must be specific and correct for this purpose.

To order please call **Keri Potter 027 757 5983**



WANTED BY THE POP UP SHOP

Jigsaw puzzles - children's books - linen for double and queen size.

We have customers looking for the above and our stocks on those items is running low - can you help? Contact Carol **021 110 1835** for pick up.

WESTERN SOUTHLAND HEALTH SHUTTLE

The Western Southland Health Shuttle Service travels from Otautau, Ohai, Nightcaps, Tuatapere, Riverton - covering all of Western Southland. We also connect with the Invercargill-Dunedin shuttle.

The Western Southland Health Shuttle operates Monday - Friday (excluding Public Holidays).

Bookings are required by 3pm the day prior to transport.

Ph: 0800 103 046 to book.

Please book as soon as you receive your appointment.

TUATAPERE VOLUNTEER FIRE BRIGADE

We're on the lookout for members to join this rewarding organization. We are looking for persons who are, ideally, available throughout the day.

If you think that you would like to try this (sometimes lifelong) commitment, then please feel free to come and try it!

We train on Tuesday nights at 7:30pm during daylight saving and 7pm through the winter months.

We look forward to meeting with you.



POP UP SHOP
Quality second hand goods

OPEN

Friday 2pm to 4pm

Saturday 10am to 2pm

Tuatapere Presbyterian Church Hall, Main Road, Tuatapere. Stay a while and enjoy a cup of tea or coffee and something to eat. **Everyone welcome.**

A good selection of children's and adult clothing, household items, toys, books, linen, shoes, and more. Check out my weekly Facebook post.

Donations of items always gratefully received. Thank you for helping us help the community. Drop off at the church or for other options contact me. Carol Diack 021 110 1835

MARKET DAY

Stalls of craft and other goods

Every 3rd Saturday of the month.

Next market day 18th June.

From 10am to 2pm

Stalls are in the foyer of the Tuatapere Presbyterian Church, Main Road, Tuatapere. Stay a while and enjoy a cup of tea or coffee and something to eat. **Everyone welcome.**

Check out my Facebook post of that week.

To book a table or any queries please phone or text **Carol Diack 021 110 1835**

**Get your car washed, dried and windows cleaned
Price arranged on request!**

Contact: Rex Hibbs Flat 1/26 Orawia Rd, Tuatapere

NEED A JP?



The following Justices are available by appointment:

Tuatapere

Keri Potter 027 526 3137

Te Waewae Bay

Shirley Whyte 027 504 5220

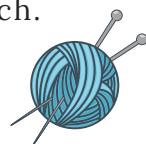
Blackmount

Nicky Baker 0276435880

**WESTERN SOUTHLAND
WOOLCRAFT GROUP**



Spinning, Felt, Weaving, Knitting, Crochet. Other crafts welcome!
1st & 3rd Wednesday of the month.
10am - 3pm. \$3. BYO Lunch.
Scout Den, Erskine Street.
For details please contact:
Helen Todd 022 103 9327



**TUATAPERE & DISTRICTS
LIONS CLUB PROJECT**



SUPER DIRT

Super dirt bags are now weighed so more in each bag!
\$8 per bag - ready for your garden!

Super dirt can be collected from:
Cracks Yard, Grove Burn Road,
in the mornings Monday to Friday.
Weekends by arrangement.

Delivery by arrangement - (but not guaranteed)

Phone Trevor (03) 225 5864 or
Stephen (03) 226 6817



**TUATAPERE COMMUNITY
WORKER**

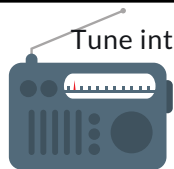
Room 5 Medical Centre
69A Orawia Road

Monday - Thursday 10am to 3pm

Keri Potter 027 757 5983

Email: tcworker@xtra.co.nz





Tune into Tuatapere's very own Radio Station

88.2 FM - Tui FM!

Hits of the 80's & 90's and
today's current music!

SALVATION ARMY FAMILY STORE TRUCK

The Salvation Army Family Store Truck will come out and collect large amounts of your pre-loved furniture & other household items. This service is free. Please call the store to organise your visit on **03 214 5380**



TUATAPERE HEALTH & GIFT SHOP - Riverton Pharmacy

SHOP HOURS: Opening time: 12.00pm.
1st prescription drop from 12.30pm daily.
If we can help in any other way, please
contact Riverton Pharmacy **(03) 234 8515**



COUNTRY CORNER CRAFTS

Come in and browse and see what we have to offer. Hats, scarves, children's knitwear, cards, jewellery, woodware, sewing, jams, pickles, sauces, etc.

Tuatapere souvenirs "On Natures Edge" logo are always available.

Is anyone interested in joining to sell their crafts? You are more than welcome to contact us.

Want to volunteer your time & work in the Craft Centre - let us know! It's a great way to meet people! If you wish to view the shop and it is closed, please ring the ladies below to open it for you.

Louise Greber (03) 668 6001 or
Lyla Sherriff (03) 226 6187

TUATAPERE ENVELOPES

Envelopes printed with the "Tuatapere on Natures Edge" Logo can be purchased at Country Corner Craft Shop 1A Orawia Road. **Cost \$300 per 10**



COMMUNITY NOTICEBOARD

CHESS!

Who is keen for a game or to learn?



New venue for winter!

Sundays 3-5pm at Waiau Town & Country Club

Gold coin donation appreciated to help pay for the sets. See you Sundays, just turn up, no need to register or anything!

WAIAU SQUASH 2022

We hope to have two women's teams and two men's teams in the local Western Southland competition.



We are always looking for new members so please contacted Rebecca or Sam if you are interested.

Squash is a great way to keep fit over the winter, and socialise with some like-minded people!

Family/social keys are also available.

Contact: Sam Egerton **027 250 5477**

Rebecca Robertson **027 424 6129**

INDOOR BOWLS

The Indoor Bowls season is underway and the Waiau Indoor Bowling club is desperately needing players to avoid closing down.

We have practice nights on Mondays 7.30pm with competition games Thursdays 7.30pm at the Waiau Town & Country Club.

Young players are welcome to join with training/coaching provided.

If you'd like to join or know any who is keen ... please email jessejculbertson@icloud.com

SENIOR CITIZENS

Senior Citizens is a group of over 60s that meet every **Friday afternoon at 1pm** at the rooms behind the RSA Hall.

We are always looking for new members so if you would like a fun afternoon playing bowls, cards or just catching up with friends, come and join the group. Contact: Olive Bennett Ph **(03) 2266 477**

COMMUNITY NOTICEBOARD

TUATAPERE PLAYGROUP

Tuatapere Playgroup welcomes all 0-5 year olds & their parents/caregivers to come join the fun!



Friday mornings from 9am to 12pm. Bring a packed morning tea and drink bottle.

We provide a warm, friendly atmosphere for children to form bonds and learn alongside each other and a place for parents to connect.

For more info message our Facebook page or contact Gemma on **022 040 3368**

You'll find us at **23B Orawia Road, Tuatapere**

CLIFDEN PLAYGROUP

45 Otahu Eastern Bush Road. **Every Wednesday (during School Term) 9:30am - 12:30pm.**

All mothers and children welcome.

Bring packed lunchbox for your child's morning tea.

Contact: Sarah **027 699 5234**

TUATAPERE TOY LIBRARY

Tuatapere Toy Library has been a toy swap/hire service provided to the young families of Tuatapere and surrounding districts since 1989.



The purpose is to create opportunities for the little people of our community to have accessibility to toys. A small contribution of an annual membership allows families to join the group and have access to the toys. For more information or questions please text or ring **Nathalie Pahl on 027 4759 075**

TARGET SHOOTING SOUTHLAND

Have you thought of small bore rifle shooting which is known in Southland as target shooting?



Nightcaps meet on a Monday night.

Contact: Raeleen Sinclair **(03) 225 7834**

Tuatapere meet on a Wednesday night.

Contact: Kevin Daly **(03) 234 5162** or Quinton Erskine **(03) 226 6969**

<https://www.sporty.co.nz/targetshootingsouthland>

WAI AU MEMORIAL LIBRARY

Library Hours: Fridays

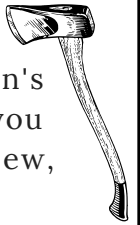
10:00am - 11:30am

2:30pm - 4:00pm

7:00pm - 8:00pm



TUATAPERE BUSHMAN'S MUSEUM



Orawia Road. If the Bushman's Museum is not open when you have visitors who wish to view, you can contact: **Lindsay Faulkner (03) 226 6650** to arrange a suitable time.

TUATAPERE & DISTRICTS PROMOTIONS INC



We are always interested in hearing new ideas and seeing new faces. Everybody is welcome!

We meet at the
Waiau Town & Country Club,
3rd Wednesday of the month
at 7pm!

Contact Paula: **027 4346 777**

Our Next Meeting:
15 June 2022
after the AGM

SOUTHLAND COMMUNITY LAW CENTRE

Free legal information and advice for the community of Southland.

2nd Floor, Cue Building, 33 Don Street, Invercargill.

Phone **(03) 214 3180**

Freephone: 0800 550 800 (outside Invercargill city only)



ESSENTIAL OILS 100% PURE GIFTS OF NATURE
Florals Trees Plants Herbs Spices Citrus

To Learn More, phone or text your local Wellness Advocate
Carol Erskine Papatotara 0274 599 654



Western Districts
Variety & Music Club

HOE DOWN

SUNDAY 12th JUNE

Starts 12pm

at the

Waiau Town & Country Club

SEE YOU THERE!



Barney's Wood \$75 Per cubic metre

Lovely and dry - Pick up in Clifden

Please ph **Barney 021 056 1919**

Fire Sale

Wood-fires and Multi-fuel heaters for sale, in good used, repaired condition. Smaller fires for the shed or mai mai to larger fires for the crib or house.

GILLIES, METRO, LOGAIRE, YUNCA

Prices from \$300 to \$800

Ring Roald **021 0248 8737**
to check what's available.

Chainsaws for Sale

Range of sizes, makes & models, with or without bars & chains, in good used, repaired condition.

STIHL, HUSQVARNA, ECHO, JONSERED,
etc. Sizes from 25cc to 94cc.

Ring Roald **021 0248 8737**
to discuss what you need and
to check what's available

COMMUNITY NOTICEBOARD

OTAUTAU MUSEUM QUIZ NIGHT

A quiz night for the Otautau Museum is being held courtesy of David & Kim at the **Otautau Hotel** on **Wednesday 15th June at 7:30pm.**

Teams of up to 6 - \$5 per person.

These quiz nights are a wonderful fundraiser for community groups who benefit from the proceeds and raffles and it is with many thanks to David & Kim that they happen. Good work you guys!!



Firewood For Sale.



The Waiau Star Golden Oldies are fundraising for a trip to Cambridge in 2023 to play Leamington in memory of the late Bill Wayne Cook.



- Mixed Firewood- Macroparua, Old Man's Pine + Bluegum.
- \$70 per metre, 10 metre minimum order.
- Ready for pick up at the start of July
- Contact Stump- 021 525 227

WE WANT CONTENT CONTRIBUTORS!

Are you interested in being a regular or semi-regular contributor of content for the Western Wanderer?

We're looking for people who would like to provide a short article/piece of reading for each monthly issue. (It doesn't have to be every month - we can be flexible!)

8 Get in touch with us at yourwesternwanderer@gmail.com

COMMUNITY NOTICES & EVENTS

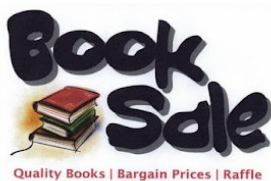
OTAUTAU MUSEUM ANNUAL FUNDRAISING

Saturday 9th & Sunday 10th July AND
Friday 15th & Saturday 16th July

10am – 4pm

At the Otautau Catholic Parish Centre
(89 Main Street - Opposite Western Motors)

Any books, DVD, CD or jigsaw puzzles (must have all the pieces) can be dropped off at Otautau SDC or contact Robyn 027 338 6327



NOTICE OF AGM



41 King Street Tuatapere
Telephone 03-226 5489 Fax 03-226 6489

Sunday 26th June, 2pm

All Welcome!

Nominations required for
Committee and Executives please.

Nomination forms available at the bar.

SUDUKO SOLUTIONS FOR MAY'S ISSUE

A

8	1	2	9	5	4	7	6	3
9	5	3	6	1	7	2	8	4
7	6	4	3	8	2	1	9	5
3	8	1	7	4	9	6	5	2
4	9	5	2	6	1	8	3	7
2	7	6	5	3	8	9	4	1
1	4	7	8	9	3	5	2	6
5	2	8	4	7	6	3	1	9
6	3	9	1	2	5	4	7	8

B

1	7	6	4	8	2	3	9	5
2	5	8	1	3	9	6	4	7
4	3	9	6	7	5	2	1	8
5	9	2	7	6	4	1	8	3
8	6	4	3	2	1	5	7	9
7	1	3	5	9	8	4	2	6
9	8	5	2	1	3	7	6	4
3	2	7	8	4	6	9	5	1
6	4	1	9	5	7	8	3	2

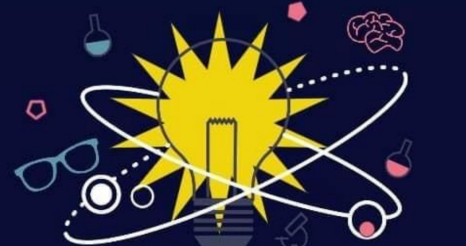
C

8	7	9	3	6	2	1	5	4
4	2	3	5	9	1	8	7	6
6	5	1	8	7	4	2	9	3
2	1	5	9	8	3	6	4	7
9	8	4	7	2	6	3	1	5
7	3	6	4	1	5	9	2	8
1	6	7	2	4	8	5	3	9
5	4	8	1	3	9	7	6	2
3	9	2	6	5	7	4	8	1

D

4	7	8	5	2	9	1	3	6
3	9	5	6	1	8	2	4	7
2	1	6	3	4	7	5	9	8
6	8	1	4	7	3	9	5	2
7	4	9	1	5	2	8	6	3
5	2	3	9	8	6	7	1	4
8	5	4	2	6	1	3	7	9
9	6	7	8	3	5	4	2	1
1	3	2	7	9	4	6	8	5

WAIU VALLEY NETBALL CLUB



QUIZ NIGHT

@TUI BASE CAMP

WEDNESDAY 6TH JULY

PRIZES FOR 1ST, 2ND & 3RD

DOORS OPEN AT 6:30 PM QUIZ STARTS AT 7:00 PM
\$5 PER PERSON MAX OF 4 PER TEAM.

THERE WILL ALSO BE RAFFLES AND AN AUCTION!!!

FUNDRAISING TO HELP FUND NEW JUNIOR UNIFORMS AND REPLACING EQUIPMENT

Book your PowerNet-sponsored St John Mental Health First Aid Training course today!

Since 2014, PowerNet and St John have had an amazing partnership. Together we are delivering the new St John Mental Health First Aid Training Course. Through this partnership, we are offering FREE mental health first aid training in the Southern Region.

The new Mental Health First Aid Training course is a continuation of our joint vision to improve the health and safety outcomes in our communities. We have an upcoming training at **Otautau St John, 199 Main Street, Otautau on Wednesday 13 July 2022**. The course is from 8:30am to 4:30pm. To book your 'FREE' St John Mental Health First Aid Training course, proudly sponsored by PowerNet, please sign up via www.stjohn.org.nz/powernet and one of our training team members will be in touch. For any queries, call us at **0800 785 646 ext 3656**.

Terms & conditions apply.



Tuatapere Freight

LOCALLY OWNED & OPERATED

RUNS MONDAY TO FRIDAY
WEEKENDS BY ARRANGEMENT

Phone Brandon
027 436 4360



Shearing magazine Des Williams (editor)

Tel 07 839 2891 : Mob 0274 833 465
Email : shearingmag@xtra.co.nz

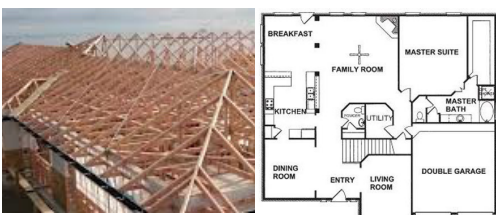
Member NZ Guild of Agricultural Journalists and Communicators (Inc)

LAST SIDE PUBLISHING LTD
PO Box 102, Hamilton 3240, New Zealand

PAUL ANDERSON BUILDER

AVAILABLE FOR ALL YOUR
BUILDING REQUIREMENTS.

NO JOB TOO SMALL.
COMPETITIVE RATES.
REFERENCES AVAILABLE!



Mobile: 027 890 3602
thetakis@outlook.com

IN & AROUND THE COMMUNITY



TUATAPERE RECYCLING CENTRE

Coke McCracken, Person in charge of Recycling Centre

Hi everyone! I have just taken over the care of the recycling station and I thought I'd put a note in about what to put in recycling.

Some of the donations lately that **are NOT welcome** included: Old vacuum cleaners, heaters, pillows, clothes and yes believe it or not, a swimming pool!

Anything not on the yellow posters goes in your red bin. Our recycling centre is **not** a rubbish dump.



WHAT can GO IN YOUR YELLOW BIN



GLASS
JARS AND BOTTLES



Clean
cans & tins



POLYSTYRENE
NON-FOOD GRADE



**PAPER &
CARDBOARD**



Clean PLASTIC PACKAGING



THESE ITEMS can GO IN YOUR YELLOW RECYCLING BIN:

- ✓ advertising material
- ✓ aerosol cans
- ✓ aluminium tins & cans
- ✓ aluminium trays
- ✓ bathroom and laundry bottles
- ✓ clear biscuit trays
- ✓ boxes & cartons
- ✓ bubble wrap
- ✓ cake trays
- ✓ cereal boxes
- ✓ drink bottles
- ✓ eggtrays
- ✓ envelopes
- ✓ freezer bags
- ✓ ice cream containers
- ✓ junkmail
- ✓ kitchen bottles
- ✓ letters
- ✓ lids
- ✓ magazines
- ✓ newspapers
- ✓ pizza boxes
- ✓ plastic bags
- ✓ plastic jars
- ✓ shopping bags
- ✓ shrinkwrap
- ✓ steel tins & cans
- ✓ strapping tape
- ✓ telephone books
- ✓ tetra paks
- ✓ tinfoil
- ✓ wrapping paper
- ✓ yoghurt pottles

If you want me to put things aside ie. cardboard for gardens, egg cartons etc please give me a ring.

10 Contact: **Coke 021 351 181**

Plaited Grass Basket Workshop

Karina Gerzarbek

Have you ever thought about what it would be like if we didn't use plastic anymore? If all packing materials were made of natural materials, then we could dispose of the packaging in the forest and compost it without any problems. after a while we can use the finished compost in the garden.

There are so many great things that can be made from weed (grass) such as clothes, baskets, hats, bags, shoes, mattresses, sitting mats, bracelets, keyrings, frisbees, decorations - the list is endless! PLUS it is so much fun doing crafts out of natural materials!

Plaited Grass Basket Workshop

Saturday 11th June - 11am to 3pm

The Scout Den Hall - Erskine St
Jack & Mattie Bennett Playground

Cost

Adults- \$20 / Children \$10

We will offer hot tea.

Please bring your own lunch

Please register by calling or sending me an email so I know how much working materials I have to bring.

Phone/Text Karina: 027 301 2102

email: karinagerzabek@gmail.com



WESTERN ELECTRICAL

2008 LTD

Electrical Solutions

Domestic | Industrial | Commercial

Quality Service at Competitive Prices

- New Builds, Rewiring & Alterations
- Dairy Shed, Farm & Industrial Maintenance
- Hotwater Element Replacement
- A/H Call Out Service Provided



Ph 03 225 8974 / 027 439 3787

Fax 03 225 8973

MOUNTAINS EDGE CABINS MONOWAI



Hunting, Fishing, Mountain Biking,
Kayaking & Tramping
Cabin Accommodation

12 Cabins
Double and Single Available
\$35.00 per person per night

Eftpos available

Full Kitchen Facilities, Showers, Toilets, Playground
& the Tennis Courts right across the road!

We are 'pet friendly'

www.mountainsedgecabins.com

Email: mountainsedgecabins@gmail.com

75 Turbine Drive, Monowai. Ph. 03 225 8267

WaterForce

Irrigation Systems
Pumping & Filtration
Effluent Dispersal
Water Management

20 Winton Hedgehope Highway, Winton

03 236 9805 www.waterforce.co.nz

0800 4 FORCE (4 36723)

Lynley McKerrow

Celebrant
Funeral and Marriage

P: 0272 974 767
E: nanamac60@xtra.co.nz

with care - with love - with dignity



IN & AROUND THE COMMUNITY

Respiratory Syncytial Virus (RSV)

Ministry of Health

Respiratory syncytial virus (RSV) is a highly contagious, common respiratory virus that causes lung and respiratory tract infections. Outbreaks of RSV and other illnesses such as colds and flu are more common in the winter months.

A person infected with RSV spreads the virus in droplets when they cough, sneeze or talk. While most adults and older children with RSV will experience symptoms similar to the common cold, very young children and premature babies can become very sick and may require hospitalisation.

RSV and COVID-19 are both respiratory illnesses. The common symptoms of RSV are:

- a runny nose
- coughing or sneezing
- fever
- wheezing and difficulty breathing
- loss of appetite or difficulty feeding due to breathlessness.

In very young infants, the symptoms may be subtle: irritability or decreased activity may be the only signs your child is unwell. RSV infections may progress to cause pneumonia and bronchiolitis, especially in infants.

If you are concerned that your baby is unwell and may have RSV seek advice from your GP or call Healthline for free on **0800 611 116**.

RSV is one of a number of different respiratory viruses children can catch for which the advice would be the same.

Learn more about the symptoms, treatment and prevention of RSV on our website;

<https://www.health.govt.nz/your-health/conditions-and-treatments/diseases-and-illnesses/respiratory-syncytial-virus-rsv>



MANATŪ HAUORA

TUATAPERE HANDYMAN SERVICES

Barry Bennett
(03) 226 6730

- **Painting - Interior/Exterior**
- **Waterblasting**
- **Spider & Fly Spraying**
- **General Repair Work**
- **Lawnmowing**
- **Weed Spraying**



**SOUTHLIFE
Community
CHURCH**

Steve & Sharon
are Pastors

and we are an area church



We believe in Community and endeavour to show this the best we can by the way we care and serve!

MISSIONS
"BRIDGE CHRISTIAN MINISTRIES UGANDA"



We warmly invite you to come along to one of our services.
It would be great to see you

Sunday Service
10am Truro St, Orepuki



Prescription requests



TUATAPERE MEDICAL CENTRE

Please note - if you are phoning for a repeat prescription, do so in a timely manner.

The cut off times for us to have prescriptions from Riverton Pharmacy to the Tuatapere Health & Gift Shop are now earlier, we will endeavour to do our best to get your requests filled but this may not be able to be done within the day.

So, if you think you're getting low in your medicine supply, please let us know before taking the last pill from the bottle! It's a great idea to contact us a good week prior to your medication running out, just in case you need an appointment to be seen.

Charges for scripts are as follows:

\$18 for a phone script request
\$28 for same day requests

**You'll
wax
your
bikini
line**

...but you
won't get a
Smear!

Cervical cancer is one of the easiest cancers to prevent - as long as we detect cell changes that cause it, early. And guess what? NZ has one of the best cervical screening programmes in the world to help you.

All women between 25 and 69 who have ever been sexually active should have regular three-yearly smear tests. Find out how regular smear testing can prevent cervical cancer, and get more information on cervical cancer and how it develops.

If you are due for screening, phone to book in with one of our nurses **03 226 6123**



MR STEEL

TUATAPERE

PH: **027 276 6816**

MALCOLM

For all your engineering,
steel fabrication and repair needs!

FORDE SHEARING LIMITED

Available for all new and existing clients

For all your shearing and
crutching requirements

Please phone Darin or Julie Forde

(03) 235 8853

027 229 7760



**BEN MCMASTER
BUILDING**

Ph: 027 202 7955

benmcmaster@live.com

- Licensed Building Practitioner
- Sheds, renovations & new homes
- Based in Western Southland

You dream it, we'll build it



Ice cream & Milkshake Parlour

16 Orawia Road

6am - 4pm

Everyday

Milkshakes Ice Creams

Waffles

Crepes

... and more ...

*Home-made food to warm the heart
and fill the stomach with some of the
best coffee you've ever had here in
Tuatapere, Western Southland*

Shirley Whyte
Your local realstate specialist living & working in Western Southland
now also an Accredited Justice of the Peace.



for:
Friendly service, reliability, sound local knowledge
in Western Southland, Te Anau & Stewart Island
All enquires welcome - all calls answered



M 027 504 52200 O 03 214 4080
E shirley@harcourtsinv.co.nz
W www.harcourts.co.nz

Kia ora, Ni hao, Bula
Western Wanderer Readers



Hauroko
VALLEY PRIMARY SCHOOL

Term 2 Action

This Year our school-wide overarching theme is Systems. The definition of a system is a set of things working together as parts of a/or an interconnecting network; a complex whole. These can be as simple as a set of habits or tiny actions that work together to simplify your life or help you set and reach goals.

At HVP learners are at the centre of our decision-making, strong links are made to a responsive local curriculum where powerful connections and relationships are made through interactions with others and our environment.

Take a look...

The Year 7&8's had a special time at Oreti Beach collecting toheroa with Terressa. Truly a once in a lifetime opportunity! She guided our students on being kaitiaki of the environment and how to live off the land. An incredible feast followed with karakia and kai moana. The focus was connection to tangaroa, whenua, he tangata all through manaakitanga. We are incredibly thankful to the Kollat whanau for providing our tamariki and supporters with this miharo time.

Three teams are entered in the Invercargill Hockey Competition. Our Junior High Team combines students from Aparima College and Otatau Primary; with support from Waiau Area School. Providing opportunities to work together with others, for our students, is key to a thriving team and community.

Specialising in
Dairy Conversions
Rural Fencing
Post & Rail



H Gill Fencing,
Eastern Bush
Phone 021 225 5489
After Hours 03 225 5488
Email hamish@hgillfencing.co.nz



accelerate
PHYSIOTHERAPY

office@acceleratephysio.co.nz
60 Deveron Street, Invercargill
(off street parking)
0800 291 475

Accelerate is a gentle form of exercise, effective in providing long term solutions after an injury, especially low back pain.



We have interests in:

- > Spinal/Back & neck injuries
- > Sporting Injuries
- > Running, Cycling & Multisport
- > Men & Women's Pelvic Health
- > Acupuncture
- > Balance & Dizziness
- > Workplace Injuries / Ergonomic Onsite
- > Work Evaluations & Educations
- > Pilates

Joel Barnes
BPHIT, BEXSC

Andrea Robertson
BPHIT, PG Cert ACUP

Andrea Murray
Dip PHIT Dip M.T.

Find us on facebook

www.acceleratephysio.co.nz




Term 2 Events

Our students are busy engaging in daily cross country training for our Interschool Cross Country at Thornbury along with Waiau Area School. We enjoy our Western Southland Cluster School get-togethers as we reconnect with family, friends and community.

Kowhai class visited Bill Richardson's Transport World for a lunch shout thanks to More FM. They loved their tour and being treated like celebrities! Their reward was a superb finish to their mahi in completing a Design Your Own Dream Vehicle" with specific detail given to each part of the Technological process.

Adventure Southland hosted our Year 7 learners for team-building, high ropes, and ultimate archery. The success of achieving these challenges was possible through support systems where our tamariki worked as a team. National Young Leaders Day in Dunedin is an annual event for our Year 8's. They heard from some of Aotearoa's highly regarded motivational speakers. Each speaker shares personal narratives of their learning journey including support systems and networks as a way of inspiring the next generation.

Meanwhile, our Year 5&6 students are eagerly training for the Southland Rippa Rugby Carnival in June. They are learning rippa skills through a variety of drills, system-focused!

Systems are important for success as they support you to set up for continuous improvement or growth. Here's to the systems that make our place great and to everyone for your contributions that make such a difference!

Nga mihi, Julia Waikato



We look forward to sharing more of our learning adventures with our Western Wanderer whanau soon!

ALWAYS OUR BEST



Registered **ELECTRICIAN**

For all electrical work
No job to small
A/Hours service available


Jay Brownlee
8 Carlyle Street, Tuatapere 9620
A/H 03 226 6673
Mob 027 4965 863
sparkieintuatapere@gmail.com

For all your Accounting and Tax Solutions

Ask for Janice or Trevor England

 **03 2266110**

Aparima Accounting Ltd
57 Main Road Tuatapere



CANTERBURY CARS

4WD Specialists

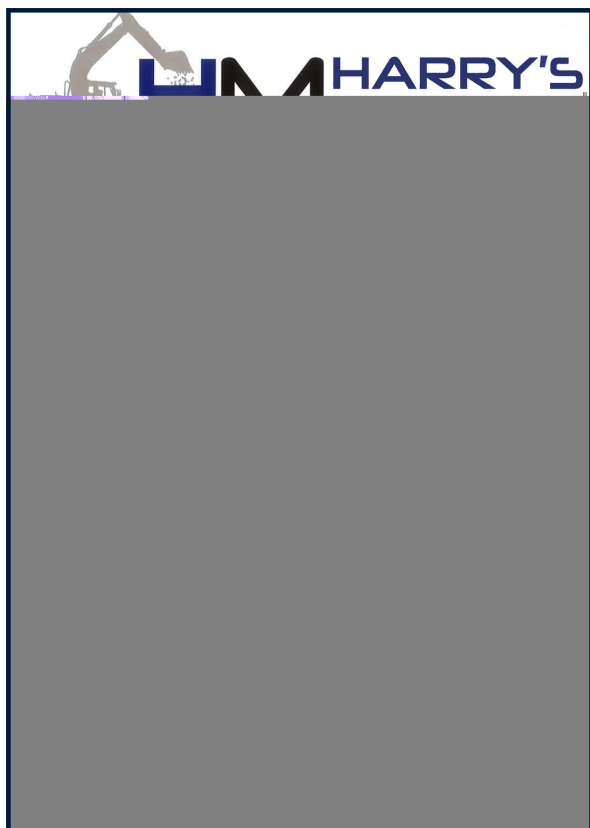
For all your vehicle requirements

Cars, utes, 4WDs, vans

Finance available

Contact: **Murray Dowling**
027 556 2655

Visit our website
www.canterburycars4x4.co.nz



CHAINSAW SHARPENING

All chainsaw chain sizes precisely sharpened and rakers taken down accordingly, guaranteed results

Chain only \$10 Taken Off & Refitted \$13

Please phone **027 308 2501**

WANTED TO BUY

Possum Fur, Hard deer,
Antler, Deer Velvet.

Phone Leith 027 496 3721

WAIAU VALLEY SHEARING LTD



**Simon de Vries
Julie Heaps**

**027 840 9867
03 226 6212**



From **Aunty's Cookbook**

The best chocolate chip biscuit recipe! This recipe is one of my all time favourites and always a go to when it comes to filling the tins.

Chocolate Rolled-Oat Biscuits

Ingredients

- 250g butter
- $\frac{3}{4}$ cup sugar
- 3 tablespoons sweetened condensed milk
- $\frac{1}{2}$ teaspoon vanilla essence
- 1 $\frac{1}{2}$ cups rolled oats
- 1 $\frac{1}{2}$ cups flour
- 1 teaspoon baking powder
- $\frac{3}{4}$ cup each chopped white chocolate & dark chocolate buttons

Method

Preheat the oven to 170°C. Line 2 oven trays with baking paper.

Beat the butter and sugar until creamy. Add the condensed milk and beat until pale and smooth. Mix in the vanilla, oats, flour and baking powder, then the chocolate chips.

Place spoonfuls of the mixture on the prepared trays and press flat with a wet fork.

Bake for 20-25 mins until golden brown.

Cool for 2-3 mins on the tray, then cool fully on a wire rack.





Rabco Ag Ltd – 021 362 766 – admin@rabco.nz
Agricultural Contracting Specialists - Western Southland



**Full silage
& baling**



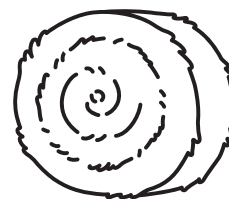


30th ANNUAL HAY DRIVE **TUATAPERE DISTRICT LIONS**

Hay, Baleage and Silage Competition

Friday 10th June 2022

at 134 Grove Burn Road



The Hay and Baleage will be auctioned during the afternoon. The recipients of the day's profits are Hospice Southland, Tuatapere Free Ambulance Services, Education Fund within the Community.

We are at present contacting all farmers with Pit Silage and a local Lion Member will be in contact with those farmers shortly. If we miss someone please contact **Charlie Copeland 027 669 1529**
Entry for this competition will be \$95.00 + GST of which 100% will go to the nominated charities.

Those entering this section of the competition have a chance of winning a generous major Prize. You are almost guaranteed to collect a spot prize as long as you are present on the day.
FARMERS WHO DONATE 3 OR MORE ENTRIES WILL HAVE AN EARLY CHANCE AT THE PRIZE BOARD.

One entry comprises of:

- 8 small bales per entry or
- 1 large hay bale or
- 1 bale of baleage
- 1 entry silage (pre judged)

Donations of straw will be gratefully received.

A Lions Member will contact farmers approximately 1 week prior to the competition.

The auction of entries will be mid afternoon.

We hope to sell 200 bales baleage, 200 conventional bales and 50 large bales of hay.

This year we have several new sponsors as well as more demonstrations of ALL the new motorbikes and some new 4 x 4 Utes. Farm machinery items will be on display.

Several competitions during the day include:

- The Best Swede)
- Best Fodder Beet) Generous prizes for each section
- The Best Turnip)
- The Best Chou
- Guess the weight of a bale of baleage

The Lions Club will be providing food and refreshments at a very reasonable cost. You are all invited to turn up early and participate in the scrumptious light meal that will be available at lunch time.

We will acknowledge the generosity of our sponsors prior, during and after the competition.

With over 100 sponsors for our competition day, we have a fantastic prize list.

We remind people that they **MUST be present at prize giving** to participate in the "spot" prizes at the conclusion of the major presentations.

***Over the years the patronage from farmers has increased to almost 100% support,
so let's try to make our 30th competition the best ever!***

For any further information please contact:

Competition Chairman: **Sammy Sanford: 027 438 2248** or **Stephen Crack: 027 4346 871**

Charlie Copeland: 027 669 1529 **Quinton Donald: 027 438 8281**

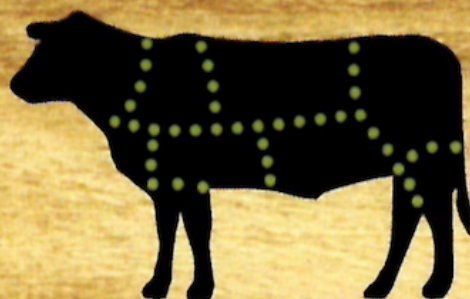


**We are ready to process your
recreational-hunted game
from the Roar or from
Duck Shooting!**



**Wayne Saunders
Qualified Butcher
rawfarming@yahoo.co.nz**

**027 457 6350
82 Clifden Highway
Tuatapere**



Cut up the way you want

**Beef
Pork
Sheep
Venison**

**Other game meats
Traditional Smallgoods**

**Remember to
ring & book in
your beef!
It's getting
busy!**

Waiau Town & Country Club

**Meals (homemade goodness)
available Thurs, Fri, Sat & Sun
from 5pm to 9pm.**

Family Friendly | Happy to cater for dietary requirements.
Please pre-book for groups of 8 or more.

Club Opening Hours:

Mon - Thurs 4pm till close.

Fri 3pm - close.

Sat Noon - close.

Sun 3pm - close.

Book now for functions/birthdays etc

We can cater! Call to discuss options.

03 22 66 489

What's on at the Club:

***HOE DOWN - Sunday 12th June**

Western Districts Variety & Music Club 12pm start

***FANCY DRESS PARTY- Saturday 18th June**

Dress as something starting with C

Best dressed wins \$200 cash + \$50 bistro voucher

***Waiau Town & Country Club AGM**

Sunday 26th June. 2pm.

Nominations required for Committee & Executives please - come join us. All Welcome!

***STEAK NIGHT** - every Thursday night
only \$25 for a delicious steak meal.

***INDOOR CHESS** - Previously at Last Light Lodge
Moving inside for Winter - **Sundays 3-5pm**

*** MEMBERS DRAW & RAFFLES**

drawn every Friday night! Approx. 7.30-8.30pm.
Come in for a bite to eat and a drink, who knows
you might be the lucky one to win \$\$!

**Keep an eye on our Facebook Page for
more details on upcoming events**

Annual Membership/Subs

*Everyone welcome to become a member,
just pop in or call the club.*

Annual membership is \$50 or \$30 for pensioners.

*Pay & collect at the club or pay online
and we'll post your card out.*

Phone: **03 22 66 489** | Address: 41 King St Tuatapere

Email: waiautcc@gmail.com | Facebook: [facebook.com/waiautcc](https://www.facebook.com/waiautcc)

| Courtesy Van Available |

We look forward to seeing you!



WAI AU AREA SCHOOL

Year 1-13 Education

Live to LEARN, LEARN to Live

Kia ora Western Wanderer Readers!

The **Hard Materials** (woodwork) department has been busy to date. We've successfully had HVP Year 7&8's complete their fold out stools and fruit baskets. Our WAS Year 7-10 students have also created a few things too. We have Andrew (BCITO) taking NCEA woodwork who is achieving extremely well. Here is a pic of some of the things our students have made. We are very fortunate having Mr PB working with John (Mr John) McNab and Warwick (Mr Warwick) Hawley (both very skilled members of the WAS staff)

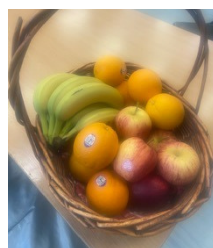


teaching our tamariki and rangatahi. We are also very fortunate having a supportive BOT who provides the technology department with a healthy budget for all our students to experience success.

We are looking forward to having the primary school through the woodwork room soon.

Free Lunches in Schools (FLIS)

Free Lunches in Schools is now into its second term offering a variety of hot and cold lunches from Cottage Pie, Macaroni and Cheese to Chicken Wraps, Ham Salad Sandwiches, Filled Rolls and Pasta Salad. Fresh fruit is offered daily with the choice of a Muffin or Biscuit twice weekly. Watermelon proved to be very popular over Summer!



The menu changes each term to offer the students a variety of hot and cold lunches. The meals are healthy and have been approved by a Ministry of Education nutritionist.

Our team consists of three talented ladies, Roberta Gover who manages the programme, together with Jo Flynn



and Paula McLennan, our Chefs. We look forward to continuing to feed our WAS family with fresh, nutritious lunches.

Music at WAS

In Term 1, students in our Primary classes explored soundscapes, created their own compositions using graphic scores and played a variety of tuned and untuned percussion instruments.

Our secondary-aged students have been learning about the History of Rock 'n' Roll and explored a familiar pop song using tuned and untuned percussion, ukulele and vocals.

The students in Year 10 this term will be working on the rock band instruments to rehearse and master a set list of '80's songs. The Year 9's will be studying an era in musical history, learning about composers and performers that have shaped our musical landscape.

Our WAS musicians of all ages continue to show imagination, creativity and resilience in the music space.

PE & Health at WAS



Our students have explored a range of activities in a variety of contexts, pushing their limits and challenging themselves.

Highlights for the Year 7-10's have been learning about Inclusive and Adaptive Sports using the Blind & Low Vision NZ teaching resources and participating in Extreme Tagging with the crew from Active Southland.



The Senior Y11-13's had the opportunity to become Open Water Divers on an intensive



5 -day course at Dive Otago during the Term 1 and 2 school break; earning NCEA Credits and becoming PADI Certified. Ka pai WAS Rangatahi!

Alex Reid CONTRACTING

**Paddock Cultivation from
Ploughing to Sowing
Dry Hire available
Aerating
Direct Drilling
Ridging
Mulching**



Dairy Lane Maintenance

Tip Trailers • Vibrating Roller • 2 Tip Trucks

Sheep Conveyor

Drenching, Vaccination etc • 3 way draft

Large Skid Steer for calf shed cleaning, loading Muck Spreaders etc

4 Muck Spreaders • 16,000 litre Slurry Tanker
Pond Stirrer • Umbilical Slurry System



Rural Contractors
NEW ZEALAND

**PHONE ALEX
0212775308 CELL
03 2255377 HOME**



C: 0274 247 102
T: 03 225 8652
E: admin@drakeplumbing.co.nz

KIERAN DRAKE
 Certifying Plumber
 & Drainlayer



Liquid Foliar Spray Contracting

- ✓ Fertiliser
- ✓ Fish Fertiliser
- ✓ Gibb & NBoost
- ✓ Herbicide
- ✓ Humates
- ✓ Soil & Herbage Testing

Jon – 021 575 071



Melanie - your local salesperson

I am proud to be serving my local area, helping people from all walks of life meet their property goals.

After some great sales so far in 2022, I have a number of buyers still looking.

If you would consider selling, give me a call!

Mel Muldrew
 021 068 5262
 melanie.m@toddc.co.nz
 TODDCO.NZ

William Todd & Co Ltd, Licensed (REAA 2008)



Choose Local. Choose Melanie.
Serving Southland since 1865.

LOCAL HISTORY - SPECIAL FEATURE

Was Dorothy Really Ripped Off?

By Des Williams

Continued from May's issue ...

"That is, I cannot intuitively imagine that these would be words she would have written, in terms of the vocabulary, the phrasing, or the sentiments. They are, however, entirely consistent with the large volume of generic commercial lyrics produced by John Bettis over a lengthy period."

Though Bostle had no knowledge about documentation of the original poem, he thought it extremely unlikely he would have been unaware of subsequent correspondence between the Carpenters and Dorothy regarding agreements or waiving of publishing rights, or payments made during the period up to June 1972. While one hesitates to question the overall authenticity of McFarlane's version, he can point to several other provable 'inaccuracies' in her story.

Comments from other people contacted during research for this story confirmed the 'two sides' theory. From one: 'Dorothy told me she wrote it. She was quite often writing little poems and ditties.' From another: 'She was a bit different. She could tell a few porkies.'

But even if, as Don Henley sings, there are actually three sides to every story ("Yours, mine and the cold, hard truth") we may never know for certain. So, where does that leave us? As Bill Bostle suggests, 'In the final analysis, people will have to decide for themselves which authorship is the more likely.'

Dorothy spent her last seven years living at Otautau and teaching at Nightcaps school. She died on 20 June 1984 aged 52 and is buried at Tuatapere Cemetery.



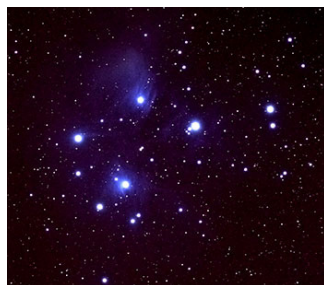
Photo: Dorothy Sherriff, 1970's

The Story of Matariki

Paul Meredith, 'Matariki - Te Tau Hou Māori', Te Ara - the Encyclopedia of New Zealand, <http://www.TeAra.govt.nz/en/matariki-maori-new-year> (accessed 20 May 2022)

What is Matariki?

Matariki is the Māori name for the cluster of stars also known as the Pleiades.



It rises in midwinter and for many Māori, it heralds the start of a new year. Iwi across New Zealand understand and celebrate Matariki in different ways and at different times.

Matariki is an abbreviation of 'Ngā Mata o te Ariki Tāwhirimātea' ('The eyes of the god Tāwhirimātea') and refers to a large cluster of stars, known in European tradition as the Pleiades. According to Māori tradition, the god of the wind, Tāwhirimātea, was so angry when his siblings separated their parents, Ranginui the sky father and Papatūānuku the earth mother, that he tore out his eyes and threw them into the heavens.

The Cycle of Life and Death

Traditionally, Matariki was a time to acknowledge the dead and to release their spirits to become stars. It was also a time to reflect, to be thankful to the gods for the harvest, to feast and to share the bounty of the harvest with family and friends.

Matariki Revived

Matariki, or Māori New Year, celebrations were once popular, but had largely stopped by the 1940s. In the 2000s, they were revived. Now, thousands of people take part in events to honour the beginning of the Māori New Year, and in whānau celebrations to remember those who have died and to plan for the year ahead. A public holiday marking Matariki will be held in June or July each year. It will be observed Friday June 26, 2022

Your Local Graphic Designer & Print Specialist

McMAHON design studio

f 9 Cumnock Street, Wallacetown **ig**

P: 03 235 8967 M: 027 242 8109 E: mcmahondesign@outlook.com

WE ARE THRILLED TO ANNOUNCE THAT WE HAVE ADDED THE

Silhouette CAMEO PRO

TO OUR LINE-UP OF FINISHING MACHINES.



The Silhouette Cameo 4 Pro desktop precision cutting machine is the perfect addition to the graphic design and printing services that we offer, and opens up a multitude of cutting & specialised finishing possibilities for your next project.

This means we can now offer these specialised finishing options in-house.

Making these services more cost effective and fast for all print jobs whether it be a small one off project or large print run.

It can fit media up to a maximum width of 60cm and length of 305cm (with the roll feeder attachment) and will work with various media up to 3mm thick.

FEATURES:

- Precision die-cutting on a wide range of materials, perfect for large or small details. *Perfect for die-cut office stationery, stickers, business cards, invitations, gift tags, custom folders, gift boxes & bags, cutting intricate designs and sewing patterns etc..*
- Specifically designed for cutting adhesive, printable and heat transfer vinyl. *Think vinyl decals & lettering, wall or window art, adhesive stencils, t-shirts, hoodies & other fabrics, mugs & glassware, signs, etc..*
- Embossing/Debossing paper, card, leather, chipboard, balsa wood etc. *Great for adding texture & depth to paper items, stationery, invitations, gift cards, book covers etc.. or creating engraved wooden signage, or coasters.*
- Engraving metal sheets & glass (using stencils and etching cream). *Perfect for jewellery making, key rings, signs, wall art, custom glassware..*
- Precise drawing and sketching with the pen tool adaptor. *Add artistic flair to your designs, great for wall art, greeting cards and calendars*
- Scoring and folding on paper & card stock to create 3D shapes and forms. *Great for party favour boxes and bags, product displays, table decor etc.*
- Burnishing wood (using stencil and burning paste with heat gun). *Great for customising wooden gift items i.e. coasters, chopping boards, spoons etc..*
- Foiling with metallic foil sheets. - *Perfect for adding sparkle to any paper project.*

COMPATIBLE MATERIALS:

- Paper & Card Stocks & Craft Board • Vinyl • Stencil Material & Thin Acetate
- Chipboard & Balsa Wood. • Crepe Paper • Foam Sheets • Leather, Cotton & Felt
- Adhesive Sticker Paper • Temporary Tattoo Paper • Adhesive Window Film
- Metal sheets & pre-cut forms • Magnet Paper & many more....

Please email us your enquiry if you have a product in mind that is not on this list.

***All designs are customised to suit your needs.
Contact us today to discuss your project.***

BARRETT *Ag* LTD

FULL SILAGE AND BALEAGE SERVICE



**ALL CULTIVATION
INCLUDING DIRECT DRILL
AND STRIP TILLING - PRECISION PLANTING**



**EXCAVATION
20 TONNE DIGGER/ GRADER
D85 BULLDOZER/ ROLLER
TIP TRUCKS AND TRAILERS**



**Barrett Ag Ltd
Ph: Kahu- 027 5183 448
E: barrettagltd@gmail.com
FB: Barrett Ag**



WAIAU HEALTH TRUST – June 2022

We are starting to find some normality with all staff back to working their normal hours as we seem to be coming out 'the other side' of COVID within our community. I am very proud to say we have managed to keep our doors open during the whole pandemic, whilst we ran on skeletal staffing, it is because of our wonderful nurses and Nurse Practitioners and their adaptability and resilience that we have still managed to provide all services to the community.

Men's Health Week

From 13th-18th June we will be offering a free 'WOF' to all men. Men's Health Week aims to help you get right on top of your biggest and most important asset – **your health**.

Take the **What's Your Score?** test to get a gauge on the health routines you already have. <https://www.menshealthweek.co.nz/mens-health-survey/>
Phone to book your free nurse-led WOF at Tuatapere Medical Centre from June 13-18th 03 226 6123 📞

Flu Vaccines 2022

Flu Vaccines are now available at the practice. Please phone to book. In many cases it is free. Immunisation is the best way to protect our communities from infection and serious illness. With the borders closed due to the COVID-19 pandemic, Aotearoa New Zealand has had few to no influenza infections for the past two years. This reduction in infections is likely to have led to lower-than normal immunity against the virus in the New Zealand population. As COVID-19 restrictions ease and borders re-open, it can be expected that a resurgence of respiratory viruses will follow, and seasonal viruses may not follow typical seasonal patterns. The lack of seasonal infection in 2020 and 2021 will likely result in reduced residual immunity and contribute to a higher risk of serious disease. While we can expect to have influenza circulating in our community this winter, we cannot predict what this influenza season may be like, therefore, preparation is of the utmost priority.

COVID 19

It is important that if you have a positive RAT result that you register it in your 'My Covid Record' or by phoning 0800 222 478. Once you have registered your positive result, someone from our team will be in touch as part of the Covid Community Care Module. If you have had Covid, IMAC recommends that they should start or continue their vaccination from 3 months after recovery. After you've had a COVID-19 infection your antibody levels will be high due to your body's immune response, so the three-month gap gives your body time to wind back and get the most benefit from vaccination.

Kind Regards

Jo Sanford (Manager)

Cell: 027 235 6190



Waiau Health Trust
69a Orawia Road, Tuatapere
Approved Registered ACC Provider
Monday to Friday
9:00am – 4:30pm
Ph.: 2266123

Practitioner Hours
Amanda McCracken (NP) – every
weekday

Sheryl Eden (NP –every Monday &
Tuesday)

Physiotherapist
Tuesdays & Thursdays
Phone for an appointment

Podiatrist
Visits regularly –
Phone for an appointment

Warts/Minor Skin Lesions
Liquid Nitrogen treatment available
Phone for an appointment

Homebased Maternity Care
We are offering this service
in the patient's home.
Please contact Jo Sanford
on 2266123 for enquiries.

Day Activities Programme for
the Elderly
Every Tuesday & Wednesday
Please phone for further information.

District Nursing
Available as required by referral

INDEPENDENT MIDWIFE

ISOBEL DEVERY

*Caring for women throughout
Pregnancy, Birth till six weeks
Post Natal.*

*Choices for place of birth,
Home or Winton Birthing Units
or Kew Hospital.*

*Free pregnancy tests
available on request.*

**Phone: (03) 22668822
027 2267020**

©Peccaro, EthicGraphics®

HISTORIC FEATURE ARTICLE

The following article is a continuation of a series contributed by George Charlton featuring 'Movers and Shakers' who have contributed richly to the Tuatapere community. The following article appeared in the 'North and South' magazine in the early 90s. It is a very interesting account of the early initiatives concerning the Hump Ridge Track.

If Tuatapere Had a Mayor ...

If Tuatapere had a Mayor, odds on it would be Ngarita Dixon. Local government restructuring has robbed towns with 700 people of such titles! But Dixon is adamant that Tuatapere's future is tied to Tourism and she's a driving force behind a bid to save the Percy-Burn viaduct. Lower than a football field and higher than a six-storey building the old railway bridge has been quietly rotting in the Southland bush since it was abandoned more than 60 years ago. But now it seems it is the highest wooden viaduct left standing in the world- and Tuatapere wants to keep it that way.

Ngarita Dixon, who recently Chaired a public meeting establishing a Trust to oversee a \$100,000 preservation project is a recent convert to the idea of making a living out of Nature Tourism. "We've been aware of natural attractions of the area but we're only getting used to the idea of sharing them with others." The name 'Dixon' is still associated with one of the town's two surviving sawmills. Once there were 32. Five years after the slump in the native timber industry there is a growing- sometimes begrudging acceptance that the regions' forests' rivers and lakes can be used for different ends.

There is a new backpackers' hostel in town, an annual endurance race which is attracting the country's top multisports athletes and a steady trickle of trampers coming to walk the South Coast Track.

The Percy-Burn Viaduct is the Track's biggest draw card. It is one of four trestle-design bridges built in the early 1920s to serve the Port Craig Mill. Constructed of steel braced Australian Blue Gum the Percy-Burn measures 125 metres across and 36 metres high- the largest viaduct ever built for a Bush Tramway in New Zealand.

Sewing and Mending Services Available

Experienced machinist offering fast, reliable service with very reasonable rates.

I will mend/make anything from zip replacements to curtain making - just ask!

Free quotes and pick-up delivery service within Tuatapere.



Contact **Deborah**

(03) 226 6783 or 021 0305 667



DAGWOOD DAGGING

Available now to all new and existing customers for all your crutching requirements.

3 Stand or Single trailer available
7 days a week, wet or dry.



No job too big or too small.

Competitive rates

Jeff Chambers

027 3042 241

Everything about the Port Craig logging operation was Big. The Mill had two storeys and was capable of producing more sawn timber per month than any other in the country. Boards were slung by overhead cables onto anchored ships bound for the North Island and Australian markets. Four steam engines plied the bush tramways: a British Barclay & Price (engineered in Thames) and two Invercargill built Johnstons. A 90 tonne steam beaching North American Lidgerwood Hauler was used to drag rimu logs to the bush sidings.

Quiet now save for the trilling of tuis and bellbirds the South Coast Track follows the shores of Te Wae Wae Bay from Bluecliffs Beach. After about six hours walk trampers reach Port Craig where, in the 1920s there was a 200 strong township with family homes, single mens' quarters, a store, cookhouse, billiard hall and library. The only building left today is the old school which serves as a trampers' hut. The Department of Conservation plans to restore some of the building's former glory by revealing tongue and groove joinery hidden under hardboard and repairing the wooden window frames and weatherboards.

The Percy-Burn Viaduct is about two hours on from the hut and there are three smaller viaducts to cross during the full day's walk to the edge of the Waitutu Forest. Nature gained the upper hand in 1929 when the Port Craig Mill fell victim to economic depression. With no markets and unable to downsize the mill's owners gave workers three days notice. When the Bluff Harbour tug collected them they not only lost their jobs but their homes as well. There has never been road access to the settlement. After hopes faded that the mill would ever open again, the machinery and houses were sold for salvage and removed in 1940. The viaducts have remained standing due to the high quality of workmanship and because they never had to bear the stresses they were built to take. A recent engineering report, however, revealed the Percy-Burn is now in critical condition with several of its pier legs rotted out and longitudinal supports missing. Wind stress during a big storm could cause it to buckle and collapse.

To be continued next issue

PROPERTIES WANTED!

Contemplating selling? You might be surprised by what your property could fetch on today's market

Contact Julie today for a free appraisal and to discuss how you could take advantage of this bouyant property market



Julie Guise
021 256 4164
julieguise@sre.co.nz

SOUTHLAND REAL ESTATE LTD
Licensed under The Real Estate Agents Act 2008

SOUTHLAND REAL ESTATE LTD
Licensed under The Real Estate Agents Act 2008 MREINZ

For all your fencing requirements

WESTERN FENCING

SHEEP | DAIRY | DEER



Call BEVAN 0277 413 213

ADS

ANDERSON DRAINAGE SERVICES

Keeping Southland Flowing



- ✓ Tile Cleaning
- ✓ Culvert Cleaning
- ✓ Septic Tank Blockages
- ✓ Domestic Blockages
- ✓ Rural Drain Blockages

Fraser Anderson
021 162 0210
fraseranderson1@gmail.com
Forest Hill, Southland
Follow us on Facebook
Call us today!



**LET'S GET
WINTER
SORTED**

**AFTER ONE OF THE DRIEST SUMMERS ON RECORD,
NOW'S A GREAT TIME TO START PLANNING FOR WINTER.**

Leading up to calving and drying off, cow condition and feed supply are top of mind. You're likely making decisions related to boosting dry matter yield and complementary feeds. Your local Farm Source Technical Sales Representatives are on hand for you to bounce ideas off and support you in the decisions that will affect the busy season ahead.

We'd love to talk to you about planning for the winter transition, contact your local Farm Source Technical Sales Representative for further information.

nzfarmsource.co.nz/wintersorted

FARM SOURCE OTAUTAU - LOCAL CONTACTS

HI, I'M KIMBERLY

I'm one of your local Farm Source Technical Sales Representatives. After one of the driest summers on record, now is a great time to start planning for winter. Lindsay and I are here for you to bounce some ideas off and support you in making decisions that will affect the busy season ahead.

Give us a call, we're here to work with you on whatever winter has to throw at us.

KIMBERLY EDGE - TSR

027 301 2680 | kimberly.edge@fonterra.com



LINDSAY YOUNGMAN - TSR

027 839 9432

lindsay.youngman@fonterra.com



KATHERINE PETCH - STORE MANAGER

027 445 0231

katherine.petch@fonterra.com



WINTER WARMERS ARE HERE!

<p>Not Stocked</p> <p>Jim Beam Gold; CC Premium 7% 330ml 6pk cans</p>	<p>\$19.99 EACH</p> <p>Tui Vodka Soda (ex bourbon) 7% 250ml 12pk can range</p>	<p>\$22.99 EACH</p> <p>Jim Beam & Cola; CC (incl zero) CC Soda & Lime 4.8% 10pk cans</p>	<p>Not Stocked</p> <p>KGB (incl Guaraná) 7% 250ml 12pk cans</p>	<p>\$24.99 EACH</p> <p>Cruiser 5% 12pk bottle range</p>	<p>Not Stocked</p> <p>ODD Company 10pk can range</p>	<p>\$24.99 EACH</p> <p>Smirnoff Ice 5% 10pk bottles</p>
<p>Not Stocked</p> <p>Clean Collective 5% 250ml 12pk cans</p>	<p>\$27.99 EACH</p> <p>Long White 10pk bottle range</p>	<p>Not Stocked</p> <p>Jack Daniel's Double Jack 6.9% (incl no sugar 375ml) 330ml 10pk cans</p>	<p>\$13.99 EACH</p> <p>Stoneleigh Marlborough; Lighter ranges</p>	<p>Not Stocked</p> <p>Villa Maria Private Bin range (ex PN/Syrah) Thornbury range (ex PN)</p>	<p>Not Stocked</p> <p>Penfolds Koonunga Hill (Cab Sauv, Shiraz)</p>	<p>Not Stocked</p> <p>Arrogant Frog Waipara Hills (ex Waipara Pinot Gris) range Da Luca Prosecco</p>
<p>Not Stocked</p> <p>Brown Brothers Australian Tawny</p>	<p>\$13.99 EACH</p> <p>Canterbury Cream 700ml</p>	<p>\$39.99 EACH</p> <p>Gordons Pink; Orange; Sicilian Lemon 700ml</p>	<p>\$42.99 EACH</p> <p>Captain Morgan (incl Spiced) 1L</p>	<p>\$42.99 EACH</p> <p>Absolut; Ballantines Beefeater 1L</p>	<p>\$47.99 EACH</p> <p>JB Devils Cut; JB Black 1.125L</p>	<p>\$47.99 EACH</p> <p>Makers Mark 700mls</p>
<p>\$51.99 EACH</p> <p>Chivas 12yr 700ml</p>	<p>\$51.99 EACH</p> <p>Jameson Black Barrel 700ml</p>	<p>Not Stocked</p> <p>JB Double Oak 1L</p>	<p>\$54.99 EACH</p> <p>Haku Gin Ratu Rum range 700mls</p>	<p>Not Stocked</p> <p>Malfy 700ml range</p>	<p>\$57.99 EACH</p> <p>Jack Daniel's Haymans Gin 1L</p>	<p>\$57.99 EACH</p> <p>Woodford Reserve 700ml</p>
<p>\$67.99 EACH</p> <p>Johnnie Walker Black 1L</p>	<p>\$69.99 EACH</p> <p>Jim Beam 1.75L</p>	<p>\$13.99 EACH</p> <p>Monteiths 6pk bottle & can ranges (ex cider)</p>	<p>Not Stocked</p> <p>Kingfisher Strong 330ml 6pk cans</p>	<p>Not Stocked</p> <p>Rekorderlig Ultra (berry; passionfruit) 6pk can range</p>	<p>Not Stocked</p> <p>Tiger; Tiger Crystal; Crystal Ultra Low Carb 12pk bottles</p>	<p>\$19.99 EACH</p> <p>Kiwi Lager 330ml 15pk cans</p>
<p>Not Stocked</p> <p>Fortune Favours Puhoi Pilsner; Morning Cider 6pk cans</p>	<p>\$25.99 EACH</p> <p>Peroni 12pk bottles</p>	<p>\$26.99 EACH</p> <p>Heineken 0; Light 12pk bottles</p>	<p>\$26.99 EACH</p> <p>Tui; Export Gold; Extra DB Draught 15pk bottles</p>	<p>\$28.99 EACH</p> <p>Export 33 15pk bottles</p>	<p>Not Stocked</p> <p>Haagen 24pk bottles</p>	<p>\$37.99 EACH</p> <p>Lion Red; Waikato Speights or Summit (ex ultra) 24pk bottles</p>
<p>Not Stocked</p> <p>Asahi 24pk bottles</p>	<p>Not Stocked</p> <p>Steinlager 24pk 330ml bottles</p>	<p>\$26.99 EACH</p> <p>Heineken 0; Light 12pk bottles</p>				



Promotion period between 1/6/2022 to 30/6/2022. While stocks last. Promotion only available at participating stores. Please contact your local store to confirm whether they are participating in the promotion and check the pricing in-store prior to purchase. Online pricing will vary.

100% NEW ZEALAND OWNED AND OPERATED
thirstyliquor.co.nz

FOLLOW US ON SOCIAL MEDIA



ASK ABOUT LOYALTY CARD BENEFITS & GIFT VOUCHERS



Tui Base Camp



Open from 8:30am every day!

Kitchen open until at least 7.30pm

Come in and check out our specials



Sat. 4 June - Live Music: Triple Shot

Fri. 10 June - Hay Day After Drinks!

Mon. 13 June - Quiz Night - Fundraiser for Tony McDonald, 7pm

Wed. 6 July - Waiau Valley Netball Club Fundraiser Quiz Night, 7pm

Sunday Pool Comp every Sunday from 2pm!



Don't forget we now have a mini-van!

Contact us to organise a night out at Tui Base Camp (pick-up and drop-off). Enquires to **James 027 837 3521**

For all of your dine in and takeaway requirements including:

In-house roasted Amore Coffee
In-house made pies, sausage rolls, cheese rolls
Range of breakfast options
Packed lunches
Catering

Phone: (03) 226 6250

www.tuibasecamp.co.nz



Keep an eye on our Facebook Page for our latest updates!



Ratty Says ...

Waiau Memorial Library



Who's made Tomato Paste? ME! That's who. I helped to grow some tomatoes this summer and by helping, I mean I stayed as far away as possible so I didn't kill them. It worked because there were tonnes of tomatoes. I might be exaggerating a little bit but there were lots and lots of them ... I thought it would be a good idea to turn some of the tomatoes into tomato paste. Why? PIZZA! A good cheese pizza has to have tomato paste, it's the law.



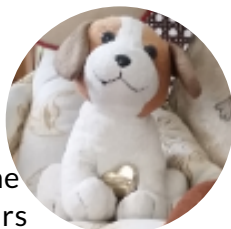
I was very helpful. I took the green leafy thingies off the tomato. I didn't think they would taste very nice. Then I washed them and put them in a really big pot. When the pot was full enough I was told that the tomatoes needed to be mushed up. I was going to stomp on the tomatoes to squish them. It was going to be soooo much fun. Then I was told that you only do that with grapes, to make wine. I was also told that it would make my feet very, very red and that not only would I have to have another bath, I would have to soak overnight, in a bucket! NOOOO! I decided stomping wasn't such a good idea, after all. I got to use a Whiz tick instead. It made a lot of noise and made me shake all over. After that the pot was put on the stove and the tomatoes got cooked and cooked and cooked until they turned into a thick mush. It took hours. I got bored and snuck off to steal (I mean borrow) some cheese. That was after I made myself a pirate hat and tormented, I mean played with the dog.



After waiting for ages the tomato paste was ready. It was pizza night so I put my freshly made tomato paste on my pizza with lots of cheese and when it came out of the oven it smelt YUMMO and it tasted even yummier. There was lots of tomato paste left over but I let the others look after it. I was too busy chasing after the dog with the wooden spoon.

Dear Ratty ...

It is with great delight that I look forward to receiving and hearing your monthly column in the Western Wanderer. My name is Charlton and I have listened to my owners reading your stories out aloud, whenever the Western Wanderer lands in our Mailbox. They both are very fond of you and what you have to say - so I thought, I should write to you. I am a bit of a Wanderer myself. I was created in Australia and lived in Queensland until my now owners took me with them on their world travels. Wherever they went, I was allowed to travel with them. I have been almost everywhere I think, countless hours couped up in the hand luggage up in the storage bin overhead the seats in the cabin of the airplanes. These airplanes are BIG and I have been told that they actually fly very high up in the sky, much higher than the birds we see. I could feel when they hit the ground again each time; sometimes I was a bit afraid. But then my owners took me out of the locker again and I would be strapped securely into the backpack or the like and could see everything around me. What great times I have had over the years.



I have visited the lowest lake in the world and have seen my owner take a dip in one of the highest lakes in the world. So many interesting places. Dear Ratty, if you would like to hear some of my stories - a short version of course - I would love to hear from you. Most of the places I have visited have been written about in books that you should find in the library you live at. You could read up on each place I have been to in much more detail than I could ever tell you in a short story. I have some great photos of me in places as well. Also, I want to say I feel for you in that I had to have a bath after every big travel we did and you are right, it is rather traumatic, and they usually pinned me up on my ears on the clothesline as well ... what can I say. I hope that in the meantime you found a good spot to get yourself smelling right again!

I now live here in Southland - at Tihaka, a lovely spot and I have made many new friends. My favourite friend is pictured here with me, we love sitting together smiling watching the world go by... She is actually from what used to be called Czechoslovakia and came to Australia with one of my owners many, many years ago before she moved with all of us to Tihaka. She says that she is glad to see soooo many of her kind around here where we live!



So, please ask one of the humans that care for you to send me an email to let me know if you are interested. No worries if you are not, I know that you are very busy each month and getting ready for the next issue of the Western Wanderer. Take care and best wishes from one loved companion to humans - to another.

TUATAPERE OUTDOORS & HARDWARE

For all your

Gardening tools, lawn care, garden hoses, insect and disease sprays, potting and compost.

We have those building requirements for that weekend job with a good selection of silicone, nails, screws and bolts.

New fishing rods and reels, fishing lures, good selection of soft bait, fishing nets, flounder and eel nets.



Good selection of giftware.

Come in, check out what we have.

Contact:

Judy 027 225 8192

Paul 027 890 3602

Shop (03) 226 6363

YOUR BUSINESS CARD COULD BE HERE!

CONTACT

yourwesternwanderer@gmail.com

FOR PRICING/DETAILS



027 252 7933

- ☒ Renovations
- ☒ Extensions
- ☒ New Builds
- ☒ Sheds/Farm buildings
- ☒ Decks
- ☒ Pre-purchase house
- Inspections

Call us for any building requirements
Ph 027 252 7933 email: aaroncbltd@gmail.com



George Harpur, SDC Councillor, Waiau Aparima Ward

Hi and welcome to all with this mid-winter report.

We are still enjoying reasonable weather, but I have a feeling things are about to change so keep the wood box full and the heat pump remote handy. We are, after all, only a few weeks from the shortest day.

We are also creeping towards the next local body election, and I strongly recommend those that are contemplating doing their bit for the community, (be it as a Councillor or Community Board member) to watch the SDC facebook page as there are information meetings coming up to explain the required duties, functions and purposes of these very important positions. These are not positions to be taken lightly as your region is on the verge of some major developments.

On the local scene we have the Hump Ridge Track and some form of street landscaping based on community ideas, and in the wider district we have the Data Centres plus a few other major industries in the pipeline. All in all, we should be in for an exciting future.

Have you the appetite to be part of our future, either as a Councillor or a Community Board member? It is vitally important that we have representation from the Tuatapere Te Wae Wae board to represent our interests. From experience, west of the Longwoods sometimes does not appear to be on the map so it is important that we have a lobbying voice.

Great to see a couple of new businesses opening and some of the older dwellings being upgraded with new cladding and paint. Well done to those concerned and a huge welcome to our new permanents who have made Tuatapere their home.

That's me for this report so cheers to all.

PLEASE HAVE YOUR ARTICLES, NOTICES, OR UPDATED ADVERTS FOR THE
WESTERN WANDERER SENT IN BY



20th of JUNE (for July's Issue)
yourwesternwanderer@gmail.com

Phone: Anita Green 027 506 2418
Tuesday 9-5pm, Thursday 10-8pm, Friday 10-5pm - Appointments are encouraged.

CHAMBERS REPAIR SERVICE

45 Half Mile Road, Tuatapere

Ph: (03) 226 6654

- 24 hour Self Service Fuel
- Full Mechanical Workshop
- NZ Post Centre
- Agents for Wide Span Garage
- MTA Gift Vouchers available



Duck Shooting Season

Duck Licences (for the season)

Cost: Adult \$100, Junior \$23, Child \$4

Daily Limit per day

10 Mallard, 6 Paradise, 5 Black Swan

Day Licenses now available



PASTURE METER READING THAT'S QUICKER
AND EASIER, WITH AT THE GATE REPORTS

- Specialist in quality pasture meter reading with advanced sensor technology
- Provide 200 measurements per second or 18,500 readings over a single 500m pass
- Provides a fully integrated electronic support system
- Provides a secure web-based storage of information with easy access
- Prompt generated feed wedges for rapid decision making and seasonal comparisons
- Generate reports at the gate, supplying valuable pasture cover data and comparable results every time
- Improve heath & increase animal hydration
- Enhance production & improve water quality
- Reduce bacterial/algae contamination of trough water

CLEAN TROUGH WATER MEANS IMPROVED LIVESTOCK HEALTH

Now 2 bikes
available
for pasture
metering



Brett George • P 027 351 3408
E platemetterservices@gmail.com



**For Landscaping,
Land Maintenance,
Gravel Supply & Cartage**

**GRADES OF CRUSED & SCREENED GRAVELS,
ALKATHENE LAYING, ROOTRAKING,
FARM TRACKS, DAIRY LANES**



**ELEVATOR SCRAPER,
BOBCAT & ATTACHMENTS,
LANDSCAPING, TRENCHING AUGERS**

Supplies of Gravel Ex Waiau River

River Run Screened Grades Concrete Gravel Pea Gravel
Rejects for soak holes Crushed - AP30 & AP65
Peebles for Sheep and Cattle yards and calf sheds
Fines suitable for cow lane capping

**K J SUTHERLAND
GRAVELLING &
AGRICULTURAL CONTRACTOR
2475 OHAI-CLIFTON H/WAY
ORAWIA RD2 OTAUTAU 9682**

Ph 0274 367 934

**K.J. Sutherland
Contracting
Bobcat T190**

**With attachments: Landscape Rake,
Augers and Trencher**

**Suitable for all landscaping, shed and yard
maintenance**

Muck-spreader and tip trailer available



**PHONE KEVIN
027 367 934 / (03) 225 5716**

MILLARS

- PLUMBING
- GAS FITTING
- DRAINLAYING
- LICENSED BUILDER

Master Plumbers
Ph 027 4340 705 or 03 225 8567



We specialise in:

**Resource consents
Farm environmental plans
Policy advice
DOC concessions
Landscape plans & assessment**

We take care of the paperwork,
so you can do what you do best!

Sonya: 027 5050 077
Rebecca: 027 4246 129
www.slwp.co.nz
Locally owned & operated



Agricultural Contractors servicing Western Southland and beyond.

BALAGE - SILAGE - GROUNDWORK - FEED TRADING
Nigel 021 226 6156 / fowlecontracting@gmail.com



Tim and Superior go the extra mile

Are you frustrated with the lack of service from your local fertiliser consultant, peddling the same advice year after year regardless of your production outcomes, environment and sustainability?

Give **Tim Adcock** of Superior Fertiliser Specialists a call. He will bring a whole new meaning to service and client/advisor relationships.

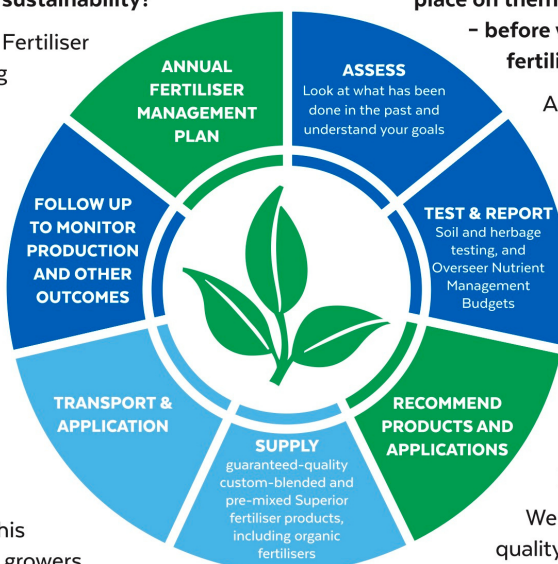
Tim is a key member of the highly skilled Superior team totally committed to helping you develop healthier, more productive soils and plants.

We form a specialist fertiliser company that provides high quality advice and products at competitive prices. We have been doing this for South Island farmers and growers for just on 20 years.

Superior promotes a total soil care package. First, we get to understand the make-up, nutrient status and health of your soils, the demands you are going to place on them, and your production goals – before we apply one kilogram of fertiliser.

A comprehensive regime of vigorous soil tests will be undertaken and the results will provide the basis of a Superior Fertiliser Management Plan customised for your unique situation. This will complement your farm's Environmental Plan and provide the blueprint for an ongoing annual fertiliser programme.

We then supply guaranteed-quality solid fertiliser for your pasture and crops, monitor production and other outcomes, and update your Plans as required.



It's free to talk so don't hesitate to give Tim a call.
Phone 021 418 224



Tim Adcock
Fertiliser Advisor
Otago/Southland
021 418 224
tim@superior.net.nz

 FERTILISER SPECIALISTS
SUPERIOR
www.superior.net.nz

TUATAPERE SERVICE STATION

20 ORAWIA ROAD
PHONE: 03 226 6475

HYDRAULIC FITTINGS & HOSES

WE STOCK A GOOD RANGE OF CRIMP ON HYDRAULIC
FITTINGS FOR AGRICULTURE HOSES WE CAN ALSO
REPAIR OR MAKE UP NEW HOSES

FOR ALL YOUR MECHANICAL NEEDS

Car & 4WD WOFs
Trailer, Caravan & Motor bike WOFs
Servicing all vehicles
Light Engineering
New Tyres
Electrical Work
Scanning of most vehicles

RIDGELINE CLOTHING

We have had new stock in of Jackets, clothing packs,
stay dry trousers and fleece sweat shirts



NZ TRANSPORT AGENCY
WAKA KOTAHI

WE CAN PROCESS ALL YOUR

REGISTRATIONS
ROAD USER CHARGES
CHANGE OF OWNERSHIPS
VEHICLE EXEMPTIONS
CANCELATION OF REGISTRATION
CHANGE OF HUBOMETER



HOURS

Monday to Friday 8.00am to 5.00pm