



# WESTERN Wanderer

Tuatapere | Clifden | Orawia | Blackmount | Monowai | Colac Bay | Orepuki

Cover Photo: Modified Tuatapere ANZAC Service Photo Credit: Waiau Area School

Issue 244

At a glance ... what events are on this month?

MAY 2022

MONDAY	TUESDAY	WEDNESDAY	THURSDAY	FRIDAY	SATURDAY	SUNDAY
						1 Chess 2-4pm Venue TBA
2 Term 2 starts	3	4	5	6 Second Hand PopUp Shop TPC Main Rd 2-4pm	7 Second Hand PopUp Shop TPC Main Rd 10-2pm  Duck Shooter's Breakfast - 6am Tui Base Camp	8 Chess 2-4pm Venue TBA  Mother's Day Lunch 12pm onwards WTCC
9 Silent Auction for Ukraine - winner drawn today!	10	11	12	13 Second Hand PopUp Shop TPC Main Rd 2-4pm	14 Second Hand PopUp Shop TPC Main Rd 10-2pm  Grand Opening of The Well 16 Orawia Rd 10am-2pm	15 Chess 2-4pm Venue TBA  Working Bee 10am start WTCC
16	17	18 Tuatapere & Districts Promotions Inc Committee Meeting 7:00pm WTCC	19	20 Second Hand PopUp Shop TPC Main Rd 10-2pm  Deadline for next issue content	21 Second Hand PopUp Shop & MARKET DAY 10-2pm TPC Main Rd	22 Chess 2-4pm Venue TBA
23	24	25	26	27 Second Hand PopUp Shop TPC Main Rd 2-4pm	28 Second Hand PopUp Shop TPC Main Rd 10-2pm	29 Chess 2-4pm Venue TBA
30	31	Coming up ...	Tuatapere Lion's 30th Annual Hay Drive Friday 10 June 2022	Queen's Birthday 6th June  Matariki 24 June	Southland Multicultural Food Festival 2022 9 July ILT Stadium	

Special thanks to



SEE INSIDE FOR MORE DETAILS!  
Want your event here? Let us know at  
[yourwesternwanderer@gmail.com](mailto:yourwesternwanderer@gmail.com)

## COMMUNITY NOTICES & EVENTS

### HANDY PHONE NUMBERS

#### EMERGENCY

POLICE / FIRE / AMBULANCE: **111**

MEDICAL CENTRE: (03) 2266 123

TUATAPERE POLICE STATION:  
(03) 2269 020

TUATAPERE COMMUNITY WORKER:  
027 757 5983

HAUROKO VALLEY SCHOOL OFFICE:  
(03) 2266 753

WAI AU AREA SCHOOL OFFICE:  
(03) 2266 285

TUATAPERE CEMETERY TRUST:  
(03) 2266 065

CHAMBERS SERVICE STATION:  
(03) 2266 654

TUATAPERE SERVICE STATION:  
(03) 2266 475

TUATAPERE FOUR SQUARE:  
(03) 2266 898

TUATAPERE OUTDOORS & HARDWARE:  
(03) 2266 363

## Don't Get 'Smished'

**ASB**

ASB is aware of a current SMS ('smishing') scam affecting our customers. If you have been sent a text message containing a link to log in, do not click on any links and do not provide any personal information. The scam is also targeting our customers who are receiving a call from someone claiming to be from ASB, do not provide any personal information or passwords. **ASB will never ask you to share your log in details or Netcode.**

Two-step verification requests in ASB Mobile app for legitimate phone calls will clearly state "ASB calling you". Never click "Yes, it's me" in ASB Mobile when asked to over the phone if the screen says "Is this you logging in?"

If you have clicked on this link or provided information over the phone, or you have been phoned and asked to click "Yes, it's me" for logging in, please call us on **0800 FRAUD (0800 272 372)**

Our customer's security is of utmost importance to us and ASB wants to remind everyone that legitimate messages from any bank would never ask customers to supply personal information, login details or second factor identification.

If a customer receives a text message from ASB, they should not click on the link and simply delete the message. **The ASB Contact Centre is available on 0800 803 804** if a customer is concerned about any suspicious messages they receive.

ASB executive general manager Simon Tong says, "Our team of cybersecurity experts are working to shut down these attacks. In the meantime, we urge all customers to keep their personal information safe and if they are suspicious of any messages they receive to please give us a call to confirm the legitimacy of the message."

### Stay safe

- Don't give out any personal details;
- Don't make any 'urgent' payments to someone you don't know;
- Don't download any software on to your computer or device that someone on the phone has asked you to;
- Hang up immediately;
- Delete that email or text.

# Watch this Space

for  
SPOT news  
& upcoming events

Contact: Loretta 0274629527 - Kaylene 0274327156  
Find us on FB: Search SPOT Tuatapere

#### Who?

We are a community group who are tackling Suicide Prevention and Outreach within Tuatapere and surrounding districts. We will be running community events and programmes starting with a Family Fun Day 1st May.

#### What?

Its time to talk about suicide, we will run big and small events and get out into the community to start conversations and engagement. We have a huge amount of support so far - if you want to be involved - get in touch!

#### Why?

Our community needs to start talking about suicide and how we can help each other when we are in crisis. Its all about creating connection and awareness.

#### When?

We will be running events - there will be something for everyone. Keep an eye out and get involved!





**Ini Gunn would like to  
THANK EVERYONE  
who made the  
OREPUKI QUIZ NIGHT  
a success!**

**We raised \$3,321 for people  
in Ukraine!**



**THANK YOU FOR  
Running the quiz/raffles/auctions:**

Carmel Barrett  
Lynley Ferguson  
Colin Brammer  
Chris O'Connell  
Phil Sellwood  
Coke McCracken  
Marg McCullough

**Flyer printing & hospitality:**

Alister McCracken at  
Orepuki Tavern

**Prize donations:**

Simon Clegg  
Colin Brammer  
Andrea Sexton & Mark Sexton  
Debbie Racz  
Judy Bevin  
Ini Gunn Yoga  
Karen De Vries & Paul McKenzie  
Tuatapere Four Square  
Neat Cut Salon  
Tuatapere Service Station  
Riverton Environment Centre  
Carmel Barrett & Marg McCullough

**AND EVERYONE WHO ATTENDED 😊**

Check out our ad for our silent  
auction for an amazing prize worth  
\$6,000! Get your bid in before 9 May!

## COMMUNITY NOTICES & EVENTS



**Silent  
Auction  
for  
Ukraine**

**To enter a bid email:**  
inigunnyoga@gmail.com  
With your name, address,  
phone number and bid.  
Highest bid buys the  
prize.  
Winner drawn and  
notified on 9 May.



**INDUSTRI ARCHITECTURAL DESIGN** in  
Riverton is donating an  
**ARCHITECTURAL CONCEPT DESIGN** for a  
new home build, tiny home or renovation.  
Includes initial consultation, review of site  
details, and a concept design, worth  
~\$6,000. **Get your bid in before 9 May!**

## Firewood for Sale

Tuatapere Golf Club  
Fundraiser



For more information please contact:

**Phil (03) 226 6570 or  
Rohan 021 332 153**

## We Want Your Photos!

Share your local area snaps with us  
via **Instagram** or to the  
"This is Tuatapere" Facebook page  
and tag them with  
**#yourwesternwanderer**

OR **email us** a copy to  
**yourwesternwanderer@gmail.com**



*Please ensure your  
photo is  
landscape size*



We'll choose one each month to  
feature on the cover of the  
Western Wanderer and  
give you credit!!

## TUATAPERE AMBULANCE

### Did YOU Know?

The Tuatapere Ambulance is a funded service by the Tuatapere Lions Club, for the residents of Tuatapere & Districts.

Should you receive an account for this service from St John, please forward it immediately to:

**The Treasurer**

**Tuatapere Lions Club**

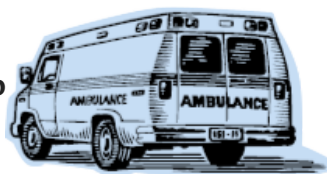
**PO Box 47**

**Tuatapere**

Sometimes we experience difficulty in receiving the invoices for YOUR trip - so PLEASE do forward them on to us.

Thank you!

**Tuatapere Lions Club Charitable Trust  
Ambulance Committee**



## COMMUNITY NOTICES & EVENTS

### CALLING ALL LOCAL COMMUNITY GROUPS / SPORTING TEAMS/CODES ETC

It's free to advertise your local group, sporting team/code in the Western Wanderer! If you want to share the results of a game and/or tournament or celebrate the achievements of a team member or player - we can print that too! Email [yourwesternwanderer@gmail.com](mailto:yourwesternwanderer@gmail.com) by the 20th of the month prior & we'll also add any event notices to the Community Noticeboard for the next issue!

### TUATAPERE PRESBYTERIAN CHURCH

Has it been a trying week? Is life a bit of a struggle? Have things not quite gone your way? Need somewhere to reflect and rest your mind? Need to 'take a breath'?

How about joining with us for a time of quiet fellowship on **Sundays at 10.30 am** at the **Tuatapere Presbyterian Church, Main Street, Tuatapere**

A time to be, to reflect and refresh. There is a children's time where they can be in their own space too. All are welcome to join us. Make new friendships, create new moments.

Need to know more? Phone or message **Lynley on 027 297 4767**

### ADDRESS NUMBER PLAQUES

Address number plaques can now be ordered through the Tuatapere Community Worker Support Trust. These can be clearly seen anywhere day or night. The number plaques are for properties. Each number must be specific and correct for this purpose.

To order please call **Keri Potter 027 757 5983**



### WANTED BY THE POP UP SHOP

**Jigsaw puzzles - children's books - linen for double and queen size.**

We have customers looking for the above and our stocks on those items is running low - can you help? Contact Carol **021 110 1835** for pick up.

## WESTERN SOUTHLAND HEALTH SHUTTLE

The Western Southland Health Shuttle Service travels from Otautau, Ohai, Nightcaps, Tuatapere, Riverton - covering all of Western Southland. We also connect with the Invercargill-Dunedin shuttle.

The Western Southland Health Shuttle operates Monday - Friday (excluding Public Holidays).

Bookings are required by 3pm the day prior to transport.

**Ph: 0800 103 046 to book.**

Please book as soon as you receive your appointment.

## TUATAPERE VOLUNTEER FIRE BRIGADE

We're on the lookout for members to join this rewarding organization. We are looking for persons who are, ideally, available throughout the day.

If you think that you would like to try this (sometimes lifelong) commitment, then please feel free to come and try it!

We train on Tuesday nights at 7:30pm during daylight saving and 7pm through the winter months.

We look forward to meeting with you.





## **POP UP SHOP**

Quality second hand goods

### **OPEN**

**Friday 2pm to 4pm**

**Saturday 10am to 2pm**

Tuatapere Presbyterian Church Hall, Main Road, Tuatapere. Stay a while and enjoy a cup of tea or coffee and something to eat. **Everyone welcome.**

*A good selection of children's and adult clothing, household items, toys, books, linen, shoes, and more. Check out my weekly Facebook post.*

**Donations of items always gratefully received. Drop off at the church or for other options contact me. Carol Diack 021 110 1835**

## **MARKET DAY**

Stalls of craft and other goods

**21<sup>st</sup> May**

**Every 3<sup>rd</sup> Saturday of the month from 10am to 2pm**

Stalls are in the foyer of the Tuatapere Presbyterian Church, Main Road, Tuatapere. Stay a while and enjoy a cup of tea or coffee and something to eat.

**Everyone welcome.**

***Extra to our usual stalls will be some home baking and produce to raise some extra funds for the new roof on the church hall.***

*Check out the new church gardens on your way in. Check out my Facebook post of that week.*

To book a table or any queries please phone or text **Carol Diack 021 110 1835**

**Get your car washed, dried and windows cleaned  
Price arranged on request!**

Contact: Rex Hibbs Flat 1/26 Orawia Rd, Tuatapere

## **NEED A JP?**



The following Justices are available by appointment:

### **Tuatapere**

Keri Potter 027 526 3137

Donald Egerton 027 432 5407

### **Te Waewae Bay**

Shirley Whyte 027 504 5220

### **Blackmount**

Nicky Baker 0276435880

## **WESTERN SOUTHLAND WOOLCRAFT GROUP**



Spinning, Felt, Weaving, Knitting, Crochet. Other crafts welcome!  
1st & 3rd Wednesday of the month.  
10am - 3pm. \$3. BYO Lunch.  
Scout Den, Erskine Street.  
For details please contact:  
**Helen Todd 022 103 9327**



## **TUATAPERE & DISTRICTS LIONS CLUB PROJECT**



### **SUPER DIRT**

Super dirt bags are now weighed so more in each bag!  
**\$8 per bag - ready for your garden!**

Super dirt can be collected from:  
Cracks Yard, Grove Burn Road,  
in the mornings Monday to Friday.  
Weekends by arrangement.

Delivery by arrangement - (but not guaranteed)

Phone Trevor (03) 225 5864 or  
Stephen (03) 226 6817



## **TUATAPERE COMMUNITY WORKER**

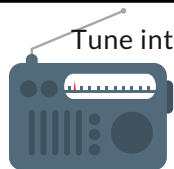
Room 5 Medical Centre  
69A Orawia Road

Monday - Thursday 10am to 3pm

Keri Potter 027 757 5983

Email: [tcworker@xtra.co.nz](mailto:tcworker@xtra.co.nz)





Tune into Tuatapere's very own Radio Station

**88.2 FM - Tui FM!**

Hits of the 80's & 90's and  
today's current music!

## SALVATION ARMY FAMILY STORE TRUCK

The Salvation Army Family Store Truck will come out and collect large amounts of your pre-loved furniture & other household items. This service is free. Please call the store to organise your visit on **03 214 5380**



## TUATAPERE HEALTH & GIFT SHOP - Riverton Pharmacy

SHOP HOURS: Opening time: 12.00pm.  
1st prescription drop from 12.30pm daily.  
If we can help in any other way, please  
contact Riverton Pharmacy **(03) 234 8515**



## COUNTRY CORNER CRAFTS

Come in and browse and see what we have to offer. Hats, scarves, children's knitwear, cards, jewellery, woodware, sewing, jams, pickles, sauces, etc.

Tuatapere souvenirs "On Natures Edge" logo are always available.

Is anyone interested in joining to sell their crafts? You are more than welcome to contact us.

Want to volunteer your time & work in the Craft Centre - let us know! It's a great way to meet people! If you wish to view the shop and it is closed, please ring the ladies below to open it for you.

**Louise Greber (03) 668 6001** or

**Lyla Sherriff (03) 226 6187**

## TUATAPERE ENVELOPES

Envelopes printed with the  
"Tuatapere on Natures Edge" Logo  
can be purchased at Country Corner Craft  
Shop 1A Orawia Road. **Cost \$300 per 10**



## COMMUNITY NOTICEBOARD

### CHESS!

Who is keen for a game or to learn?

Last Light Lodge's outdoor all weather venue!



**Sunday 2-4pm.** Keep an eye on FB for updates as we will be moving to an inside venue at the WTCC for Winter!

Gold coin donation appreciated to help pay for the sets. See you Sundays, just turn up, no need to register or anything!

### WAIAU SQUASH 2022

We hope to have two women's teams and two men's teams in the local Western Southland competition.



We are always looking for new members so please contacted Rebecca or Sam if you are interested.

Squash is a great way to keep fit over the winter, and socialise with some like-minded people!

Family/social keys are also available.

Contact: Sam Egerton **027 250 5477**

Rebecca Robertson **027 424 6129**

### INDOOR BOWLS

The Indoor Bowls season is underway and the Waiiau Indoor Bowling club is desperately needing players to avoid closing down.

We have practice nights on Mondays 7.30pm with competition games Thursdays 7.30pm at the Waiiau Town & Country Club.

Young players are welcome to join with training/coaching provided.

If you'd like to join or know any who is keen ... please email [jessejculbertson@icloud.com](mailto:jessejculbertson@icloud.com)

### SENIOR CITIZENS

Senior Citizens is a group of over 60s that meet every **Friday afternoon at 1pm** at the rooms behind the RSA Hall.

We are always looking for new members so if you would like a fun afternoon playing bowls, cards or just catching up with friends, come and join the group. Contact: Olive Bennett Ph **(03) 2266 477**



## COMMUNITY NOTICEBOARD

### TUATAPERE PLAYGROUP

Tuatapere Playgroup welcomes all 0-5 year olds & their parents/caregivers to come join the fun!



**Friday mornings from 9am to 12pm.** Bring a packed morning tea and drink bottle.

We provide a warm, friendly atmosphere for children to form bonds and learn alongside each other and a place for parents to connect.

For more info message our Facebook page or contact Gemma on **022 040 3368**

You'll find us at **23B Orawia Road, Tuatapere**

### CLIFDEN PLAYGROUP

45 Otahu Eastern Bush Road. **Every Wednesday (during School Term) 9:30am - 12:30pm.**

All mothers and children welcome.

Bring packed lunchbox for your child's morning tea.

Contact: Sarah **027 699 5234**

### TUATAPERE TOY LIBRARY

Tuatapere Toy Library has been a toy swap/hire service provided to the young families of Tuatapere and surrounding districts since 1989.



The purpose is to create opportunities for the little people of our community to have accessibility to toys. A small contribution of an annual membership allows families to join the group and have access to the toys. For more information or questions please text or ring **Nathalie Pahl on 027 4759 075**

### TARGET SHOOTING SOUTHLAND

Have you thought of small bore rifle shooting which is known in Southland as target shooting?



Nightcaps meet on a Monday night.

Contact: Raeleen Sinclair **(03) 225 7834**

Tuatapere meet on a Wednesday night.

Contact: Kevin Daly **(03) 234 5162** or Quinton Erskine **(03) 226 6969**

<https://www.sporty.co.nz/targetshootingsouthland>

### WAI AU MEMORIAL LIBRARY

**Library Hours: Fridays**

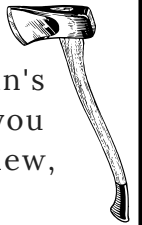
10:00am - 11:30am

2:30pm - 4:00pm

7:00pm - 8:00pm



### TUATAPERE BUSHMAN'S MUSEUM



Orawia Road. If the Bushman's Museum is not open when you have visitors who wish to view, you can contact: **Lindsay Faulkner (03) 226 6650** to arrange a suitable time.

### TUATAPERE & DISTRICTS PROMOTIONS INC



We are always interested in hearing new ideas and seeing new faces. Everybody is welcome!

We meet at the  
Waiau Town & Country Club,  
3rd Wednesday of the month  
at 7pm!

Contact Paula: **027 4346 777**

**Our Next Meeting:**  
**Wednesday 18 May 2022**

### SOUTHLAND COMMUNITY LAW CENTRE

**Free legal information and advice for the community of Southland.**

2nd Floor, Cue Building, 33 Don Street, Invercargill.

Phone **(03) 214 3180**

Freephone: 0800 550 800 (outside Invercargill city only)



ESSENTIAL OILS 100% PURE GIFTS OF NATURE  
Florals Trees Plants Herbs Spices Citrus

To Learn More, phone or text your local Wellness Advocate  
Carol Erskine Papatōtara 0274 599 654



# Tuatapere Freight

LOCALLY OWNED & OPERATED

RUNS MONDAY TO FRIDAY  
WEEKENDS BY ARRANGEMENT

**Phone Brandon**  
**027 436 4360**



## Shearing magazine

**Des Williams (editor)**

Tel 07 839 2891 : Mob 0274 833 465

Email : shearingmag@xtra.co.nz

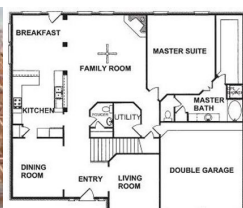
Member NZ Guild of Agricultural Journalists and Communicators (Inc)

**LAST SIDE PUBLISHING LTD**  
PO Box 102, Hamilton 3240, New Zealand

## PAUL ANDERSON BUILDER

AVAILABLE FOR ALL YOUR  
BUILDING REQUIREMENTS.

NO JOB TOO SMALL.  
COMPETITIVE RATES.  
REFERENCES AVAILABLE!



**Mobile: 027 890 3602**  
thetakis@outlook.com

## IN & AROUND THE COMMUNITY



Department of  
Conservation  
Te Papa Atawhai



## Updates from the Hump Ridge Great Walk Project

*Our way of keeping you up to date with the news and latest information from the team developing the Tuatapere Hump Ridge Track to Great Walk status.*

### Kia ora!

There was a concerted effort with the background detail and set-up of the project last year. This work will continue during 2022 but it has set us up well to get some shovels and boots onto the ground, doing the physical mahi very soon. We want to acknowledge everyone who has been involved in the project to date.

We, like you, continue to manage our way through the uncertainty, the knowns, and the unknowns that the COVID-19 global pandemic brings us now, and the next 6-24 months.

Keeping in touch and sharing the project news and progress is important to the team. Through this newsletter, we will share the project's progress but also any constraints or delays we encounter.

It has been a while since our first newsletter was distributed at our Community Info Day in mid-October 2021. We were waiting to share the news of a significant project milestone - the start of the track upgrade work - and how this milestone was honoured on a glorious April autumnal day at Rarakau car park.

### A Significant Day

On Sunday 3 April, a Whakatau Te Whenua to settle the land, bless the track, and clear the way for construction to begin, was held by mana whenua mana moana of the rohe, Ōraka Aparima Rūnaka.

As the youngest and oldest in attendance, Ollie Church (Ōraka Aparima) and Harold Thomas (Rowallan Alton Inc.) shared the honour of turning the whenua on Rowallan Alton land, where the Hump Ridge Track begins. Ōraka Aparima Rūnaka Hākui Muriel Johnstone says "The Whakatau Te Whenua acknowledged the many tūpuna (ancestors) who traversed these lands and waterways over the centuries, lived on the whenua, and gathered treasured mahika kai from the mountains to the sea - ki uta ki tai. In gathering here, we are reminded of one very ancient aranui (track) in this rohe (tribal area), which travelled up and over the vast, long ridge known as Okaka, and onwards to the many lakes and mountains throughout Fiordland".

A joint media release shared the news about this event signalling the first spade hitting the ground for the project. Ka pai tō mahi. You can read more here:

Media Release 4 April 2022

[www.doc.govt.nz/news/media-releases/2022-media-releases/hump-ridge-track-great-walk-upgrade-begins/](http://www.doc.govt.nz/news/media-releases/2022-media-releases/hump-ridge-track-great-walk-upgrade-begins/)

### Project Progress, Tasks and Timeframes

We know there is keen interest in how the project is tracking. A busy end to last year has led into a busy first



few months of 2022. Key achievements are listed below.

### December 2021

The Request for Tenders (RFT) for the track upgrade work (excluding Section D) was released on the Government Electronic Tender Service (GETS) prior to Christmas. This is the process DOC uses to inform and invite registered contractors to tender for work.

### January 2022

The Track Work RFT process continued – with interested contractors attending a pre-tender meeting and two days of site visits on the track. These sessions were designed to give contractors a good understanding of what the projects outcomes are, and the level of work required to complete the upgrade works.

### February

Track Section D upgrade work planning & scheduling.

### March

Submission of Track Work tenders closed.  
Evaluations of tender applications started.

### April

Whakatau Te Whenua held 3 April at Rarakau.  
Track Section D upgrade work starts.



### Track Section D Upgrade Work

Section D is the piece of track from the Edwin Burn Viaduct for 1.5km towards Okaka (see Fig 1.) which trampers encounter during Day 2. This section of track had been previously identified to be in very poor condition. The decision was made to prioritise the track upgrade work this walking season to stop any further degradation. We have been working with a contractor to have this work completed as soon as possible but there have been a few delays. The plan is to start the track upgrade work at site in April and finish in May/June - weather, personnel, and resources permitting.

The benefits with doing the upgrade now are

- That it will get it completed prior to winter so the track will be able to settle and therefore improve the experience and ease the underfoot conditions for next season's trampers.
- That it will also give us the opportunity to trial some new construction techniques for this type of track.

The contractors will be responsible for managing the worksite, including visitor safety through the sections of track under repair. Track users & visitors are asked to obey all signage and instructions and expect minor delays from time to time. Information will be also shared by the Hump Ridge Track Operations Office and on the DOC website.

*He rau ringa, e oti ai/With many hands, the job will be finished*

### Want to know more?

For information or to book/walk the Tuatapere Hump Ridge Track – please contact the Track Operations Office directly via [www.humpridgetrack.co.nz](http://www.humpridgetrack.co.nz)

**Project Webpage:** Stay informed with the facts and news via

[www.doc.govt.nz/hump-ridge-great-walk-project](http://www.doc.govt.nz/hump-ridge-great-walk-project)

**Project Email:** Get in touch to ask questions or to be added to the newsletter distribution list via email: [HumpRidgeGWP@doc.govt.nz](mailto:HumpRidgeGWP@doc.govt.nz)

**Media Enquiries:** please direct to [media@doc.govt.nz](mailto:media@doc.govt.nz)



**Fig. 1**  
**Hump Ridge Track Work Upgrade Mapped out**



# WESTERN ELECTRICAL

2008 LTD

Electrical Solutions

Domestic | Industrial | Commercial

**Quality Service at Competitive Prices**

- New Builds, Rewiring & Alterations
- Dairy Shed, Farm & Industrial Maintenance
- Hotwater Element Replacement
- A/H Call Out Service Provided



**Ph 03 225 8974 / 027 439 3787**  
**Fax 03 225 8973**

## MOUNTAINS EDGE CABINS MONOWAI



Hunting, Fishing, Mountain Biking,  
Kayaking & Tramping  
Cabin Accommodation

12 Cabins  
Double and Single Available  
\$35.00 per person per night

Eftpos available

Full Kitchen Facilities, Showers, Toilets, Playground  
& the Tennis Courts right across the road!

We are 'pet friendly'

[www.mountainedgecabins.com](http://www.mountainedgecabins.com)  
Email: [mountainedgecabins@gmail.com](mailto:mountainedgecabins@gmail.com)

75 Turbine Drive, Monowai. Ph. 03 225 8267

## IN & AROUND THE COMMUNITY

### Produce Less

*Karina Gerzabek*

Something I often ask myself is ... what can we change to produce less recycling, plastic and general waste?

We won't get rid of all the rubbish today, but we surely can reduce it a lot.

Are you shopping with awareness?

As humans we often end up in a shopping frenzy and buying things we don't need. Can you recognise such behaviour in yourself?

Are you buying things that you need now or stuff you will need in the future? Are you spending your money on objects, clothing and materials,- so you can have it at home, just in case? Or was it an irresistible special?

Whatever the reason, if you don't know why you bought that extra item, you will find yourself quickly dissatisfied with it.

Your house is filling up with more and more things and with the clutter, the dissatisfaction grows. You have to go back to the shop, because your brain tells you 'we just didn't find the right thing to make you happy'. You are stuck in a pattern that's hard to break.

At some point you will start decluttering your house and during that cleaning process you can quickly fill up three or more garbage cans with your freshly bought rubbish.

### My 3 Top Tips for Helping to Reduce your Rubbish



Buy only what you really need! Ask yourself questions like: Why do I need that? or What am I going to use this for?



Can you buy it second hand? Does it have to be brand new?



Share and borrow with and from the people around you. That way you don't just reduce rubbish but you connect with and support your community.

# WaterForce

Irrigation Systems  
Pumping & Filtration  
Effluent Dispersal  
Water Management

20 Winton Hedgehope Highway, Winton  
03 236 9805 [www.waterforce.co.nz](http://www.waterforce.co.nz)  
**0800 4 FORCE (4 36723)**



# Pancakes in a Bottle

Karina Gerzabek

These packages are super practical and easy to make. You won't need a bowl, whisk or ladle to make them. You can save yourself a whole bunch of washing up this way. As an extra you can keep the pancake mixture inside the bottle and easily store it in your fridge. It doesn't take much space at all and whenever you are craving pancakes it's waiting for you in the fridge. No mess either!

## Tools:

frying pan, a butter knife, table spoon and a recycled tomato pasta bottle

## Ingredients:

260ml Milk, 60g Almond flour, 150g rice flour, 2 eggs and butter



Pour the Milk in to the pasta bottles and add the eggs. Place the lid on top and shake until the egg is well mixed with the milk. You should see a colour change in the milk from the egg yolk.



Add the almond flour and shake it all again. Add the rice flour at the end and give it a last shake until the dough is all smooth. Don't leave any lumps and bumps in the mixture.



Heat up your pan and add a little bit of butter. Once the butter is sizzling, add the pancake dough. Make sure you spread it evenly in the pan. Once the edge of the pancake starts turning golden brown wait a little more until there are bubbles forming on top. Flip it and fry until it has a consistency you like. Add your favorite sweet or savoury toppings and enjoy.



*Lynley McKerrow*

**Celebrant**  
Funeral and Marriage

P: 0272 974 767  
E: nanamac60@xtra.co.nz

*with care - with love - with dignity*

## TUATAPERE HANDYMAN SERVICES

**Barry Bennett**  
**(03) 226 6730**

- **Painting - Interior/Exterior**
- **Waterblasting**
- **Spider & Fly Spraying**
- **General Repair Work**
- **Lawnmowing**
- **Weed Spraying**



**SOUTHLIFE  
Community  
CHURCH**

*Steve & Sharon*  
are Pastors

and we are an area church

We believe in Community and endeavour to show this the best we can by the way we care and serve!

MISSIONS  
"BRIDGE CHRISTIAN MINISTRIES UGANDA"

We warmly invite you to come along to one of our services. It would be great to see you

**Sunday Service**  
10am Truro St, Orepuki

SUDUKO A

		2				7		
		3		1		2	8	
	6		3					
					9		5	
4			2			8		
2		6						1
1	4		8			5		
5			4			3		
		9		2				

SUDUKO B

		6	4		2		9	
2	5						4	
	3			7				8
	9					1		
8			3	2				
	1		5				2	
				1	3		6	4
	2	7			6			
						8		

SUDUKO C

			3		2		5	
4						8		6
6							9	3
2		5	9					7
	8	4				3		
				1				
			2			5		
							6	
3	9				7		8	1

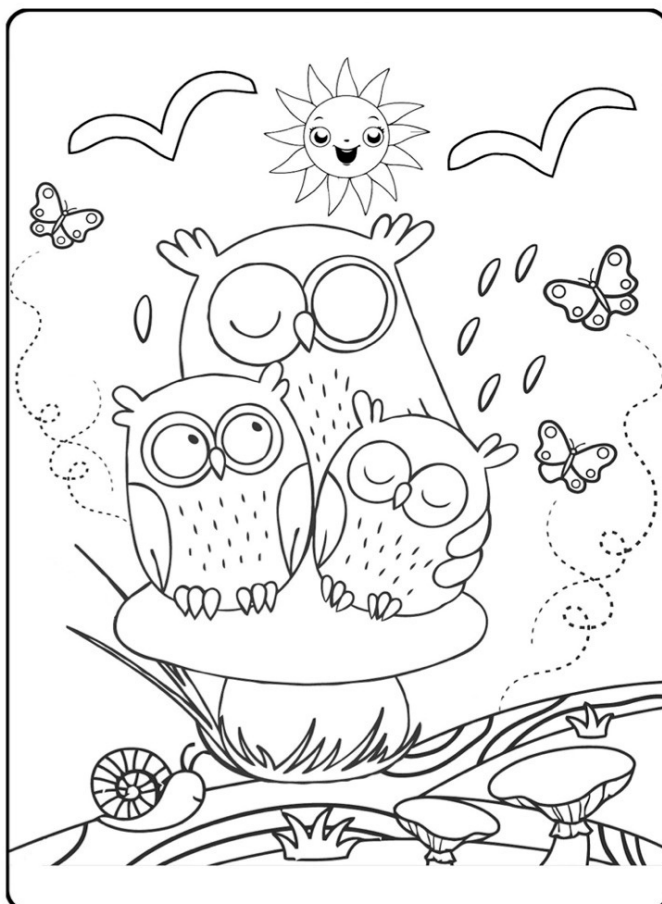
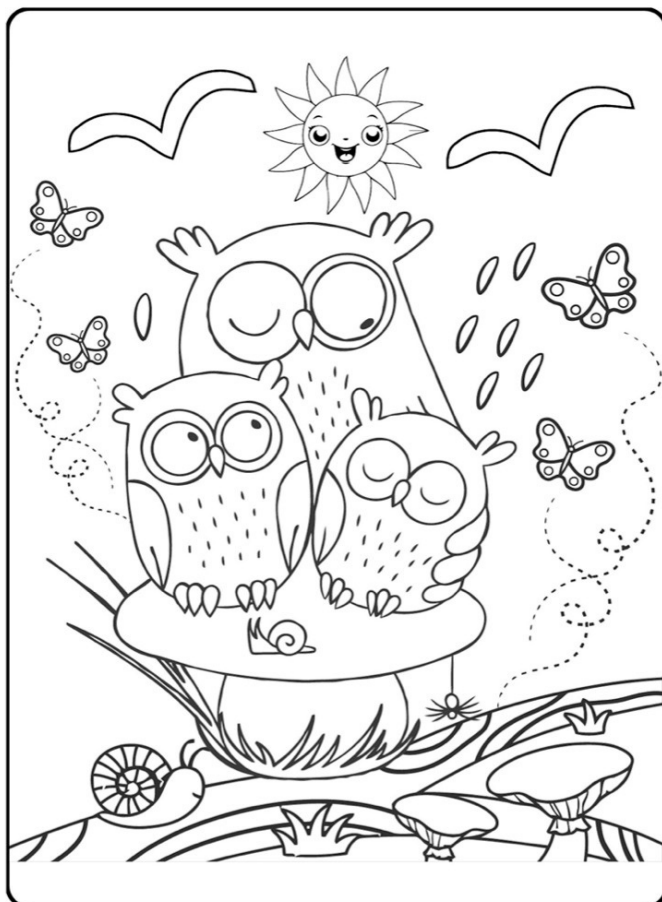
SUDUKO D

	7		5		9	1	3	
		5			8			
2			3				9	8
			4	7	3	9		
			1					
5								
8		4	2			3		
9							2	
		2		9		6		

SOLUTIONS NEXT ISSUE

# SPOT THE DIFFERENCE

Can you spot the 10 differences between these two pictures?



Colour me in when you've found the differences!



**MR STEEL**

TUATAPERE

PH: 027 276 6816

MALCOLM

For all your engineering,  
steel fabrication and repair needs!

## FORDE SHEARING LIMITED

Available for all new and existing clients

For all your shearing and  
crutching requirements

Please phone Darin or Julie Forde

(03) 235 8853  
027 229 7760



**BEN MCMASTER  
BUILDING**

Ph: 027 202 7955

benmcmaster@live.com

- Licensed Building Practitioner
- Sheds, renovations & new homes
- Based in Western Southland

*You dream it, we'll build it*

## Want your local photograph to be featured on a postcard?

We're looking for  
images that showcase  
our magnificent district  
to feature on our  
Tuatapere Postcards



Send your photographs to  
[yourwesternwanderer@gmail.com](mailto:yourwesternwanderer@gmail.com)

## WE ARE LOOKING FOR LOCAL CONTRIBUTORS!

Are you interested in being a regular or  
semi-regular contributor of content for  
the Western Wanderer?

We're looking for people who would like  
to provide a short article/piece of reading  
for each monthly issue.

(It doesn't have to be every month -  
we can be flexible!)

Get in touch with us at  
[yourwesternwanderer@gmail.com](mailto:yourwesternwanderer@gmail.com)



# Waiau Town & Country Club

**Meals (homemade goodness)  
available Thurs, Fri, Sat & Sun  
from 5pm to 9pm.**

Family Friendly | Happy to cater for dietary requirements.  
Please pre-book for groups of 8 or more.

## Club Opening Hours:

**Mon - Thurs 4pm till close.**

**Fri 3pm - close.**

**Sat Noon - close.**

**Sun 3pm - close.**

**Book now for functions/birthdays etc**

We can cater! Call to discuss options.

**03 22 66 489**

## What's on at the Club:

**\*MOTHER'S DAY LUNCH** – Sunday May 8th.  
From 12pm. Bookings only. Call **03 226 6489**

**\*INDOOR CHESS** – Previously at Last Light Lodge  
Moving inside for Winter - Starting soon in May  
2pm-4pm

**\*WORKING BEE** – Sunday 15th May  
Volunteers please! 10am start!

**\*STEAK NIGHT** – every Thursday night  
only \$25 for a delicious steak meal.

**\* MEMBERS DRAW & RAFFLES**  
drawn every Friday night! Approx. 7.30-8.30pm.  
Come in for a bite to eat and a drink, who knows  
you might be the lucky one to win \$\$!

**\* WTCC AGM** - Sunday 26th June, 2pm.  
Consider joining the committee. All Welcome!

**Keep an eye on our Facebook Page for  
more details on upcoming events**

### **Annual Membership/Subs**

*Everyone welcome to become a member,  
just pop in or call the club.*

*Annual membership is \$50 or \$30 for pensioners.  
Pay & collect at the club or pay online  
and we'll post your card out.*

Phone: **03 22 66 489** | Address: 41 King St Tuatapere  
Email: [waiautcc@gmail.com](mailto:waiautcc@gmail.com) | Facebook: [facebook.com/waiautcc](https://www.facebook.com/waiautcc)  
| Courtesy Van Available |

**We look forward to seeing you!**



**WAIAU AREA SCHOOL**

Year 1-13 Education

Live to LEARN, LEARN to Live

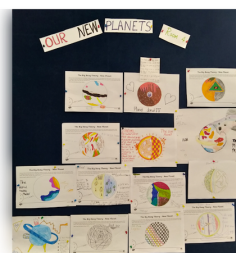
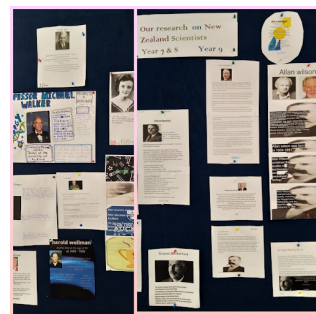
**Kia ora Western Wanderer Readers!**

## Science at WAS

While the Seniors are working hard towards gaining their NCEA credits, the Years 7, 8, 9 and 10 have been investigating and exploring scientific concepts like the beginning of the universe, classification of living things, all about the atom and elements.

This is just a snapshot of their excellent work.

To understand how scientists work collaboratively, they have researched New Zealand scientists and their contributions to Science.



While learning about the origins of the Universe, Room 4 have designed new planets that they think could have been formed after the Big Bang Theory.

By observing cells under the microscope, we could distinguish between animal and plant cells. This will lead us in our learning about classification of organisms, adaptations and the interrelationships between organisms in an ecosystem.

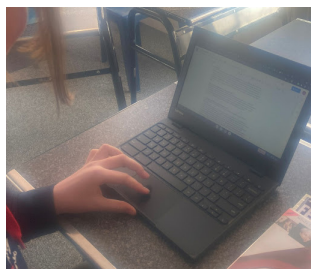


**WAS Senior English and Senior Social Studies students are working hard on their Achievement Standards to gain their NCEA credits.**

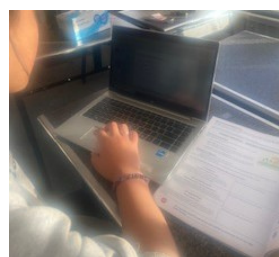
In Senior English the class have been busy writing their reports using information literacy skills to form developed conclusions. After choosing a topic for their inquiry from a text they have read, viewed, or studied in class they have framed their inquiry, selected, and used appropriate strategies to locate and

process information. They have reviewed their data, self-evaluated and then finally presented their findings as a written report.

It has been rewarding to see and share the progress of the students as they complete their reports.



The Senior Social Studies class have conducted a reflective social inquiry and written their inquiry findings as a report. As a class they have identified the required focus, gathered evidence from primary and secondary sources, described social actions, viewpoints, values, and perspectives and reflected on their inquiry findings and the



inquiry process. The research they have done is preparing them for their upcoming social action event they will conduct in mid-June.

The proceeds from their fundraising will go to an organisation of their choice.

## Mathematics at WAS

Our Year 13 mathematics class has been studying interesting topics. These are critical path analysis, simultaneous equations and linear programming. These topics have many applications in business and production.

In Year 12 our class has been studying sequences and series, networks and trigonometry.



In Year 10 and Year 11 the students have been working on number, and are now moving to studying trigonometry.

In Year 9 our class is studying algebra, after working through transformations and problem solving.

# Alex Reid CONTRACTING

**Paddock Cultivation from  
Ploughing to Sowing  
Dry Hire available  
Aerating  
Direct Drilling  
Ridging  
Mulching**



## Dairy Lane Maintenance

Tip Trailers • Vibrating Roller • 2 Tip Trucks

## Sheep Conveyor

Drenching, Vaccination etc • 3 way draft

## Large Skid Steer for calf shed cleaning, loading Muck Spreaders etc

4 Muck Spreaders • 16,000 litre Slurry Tanker  
Pond Stirrer • Umbilical Slurry System



**Rural Contractors**  
NEW ZEALAND

**PHONE ALEX  
0212775308 CELL  
03 2255377 HOME**





\* 13 Tonne Digger \* 5.5 Tonne Digger \* 2.7 Tonne Digger- dry hire or operated  
\* Tip Truck \* Bob Cat \* Augers \* Post Driver \* Tree Saw & Hedge Trimmer

\* Tree Trimming \* Post Driving \* Fencing \* Cleaning of Wintering Sheds \* Site Clearance \* Cartage \* Graveling \* Lane Maintenance \* General Earthworks

For all enquiries and bookings please contact Lance or Alice Harris

Lance: 027 304 3714

Alice: 027 270 0363

Email: lanceharris533@gmail.com

Check us out on facebook- Harry's Machines

### CHAINSAW SHARPENING

All chainsaw chain sizes precisely sharpened and rakers taken down accordingly, guaranteed results

**Chain only \$10 Taken Off & Refitted \$13**

Please phone **027 308 2501**

### WANTED TO BUY

Possum Fur, Hard deer,  
Antler, Deer Velvet.

Phone Leith 027 496 3721

## WAIAU VALLEY SHEARING LTD



**Simon de Vries  
Julie Heaps**

**027 840 9867  
03 226 6212**



*This insanely easy one pan meal is just what you need for hectic weeknights. This one is tasty and easy to make.*

## Sausage Tray Bake

### Ingredients

- 5 medium size potatoes
- 200g cherry tomatoes
- 2 medium red onions
- 4 cloves garlic
- 8 sausages
- 1 tbsp harissa powder or paste
- Olive oil
- 1 medium red capsicum
- 1 medium yellow capsicum



### Instructions

Preheat the oven to 200°C.

Toss potatoes, tomatoes, onions, garlic, sausages, harissa, oil and capsicums in a large roasting pan to combine and spread out evenly.

Season with salt and pepper.

Bake for 35-40 minutes or until potatoes are golden and sausages are cooked through, turning halfway through.

16 Serve with green vegetables.



## Book Review

by Kimberly Chatelier - age 9

Frankie Fish and the Wild, Wild Mess  
by Peter Helliar

This is the 5th book of the Frankie Fish Series. It is a great book with lots of funny sentences that will make you laugh!

Frankie Fish wants to find a cure for his Granddad's forgetfulness. He time travels with a suitcase called the Sonic Suitcase and goes back in time. His best mate Drew Bird also goes with him and both of them have had funny adventures throughout the book.

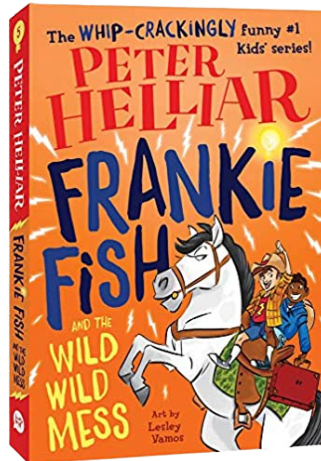
My favourite part in this book was when a Sheriff and his friend called Blackbird Roberts stole the Golden Guest and fought with each other with water pistols which was unexpected ...

Boys and girls will like this book especially those who like adventure stories.



I give this book 5/5 stars!

Other books  
in the  
Frankie Fish  
Series



ANNOUNCING THE OPENING OF



ICE CREAM AND  
MILKSHAKE  
PARLOUR

## Grand Opening Family Fun Day

14th May 2022

16 Orawia Road

10am - 2pm

Come along and enjoy the day, maybe win some prizes and have a peek at what we are doing here.

Parents Participation Essential - we can't have children having all the fun!

### THE WELL

**Milkshakes, Ice Creams, Waffles, Crepes**  
*Home-made food to warm the heart and fill the stomach with some of the best coffee you've ever had here in Tuatapere, Western Southland*

## Fire Sale

Wood-fires and Multi-fuel heaters for sale, in good used, repaired condition. Smaller fires for the shed or mai mai to larger fires for the crib or house.

GILLIES, METRO, LOGAIRE, YUNCA

Prices from \$300 to \$800

Ring Roald **021 0248 8737**  
to check what's available.

## Chainsaws for Sale

Range of sizes, makes & models, with or without bars & chains, in good used, repaired condition.

STIHL, HUSQVARNA, ECHO, JONSERED, etc. Sizes from 25cc to 94cc.

Ring Roald **021 0248 8737**  
to discuss what you need and to check what's available

PLEASE HAVE YOUR ARTICLES, NOTICES, OR UPDATED ADVERTS FOR THE WESTERN WANDERER SENT IN BY

**20th of MAY**  
**(for June's Issue)**

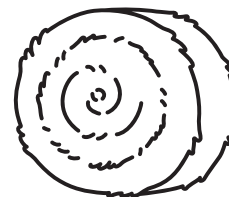


## **30th ANNUAL HAY DRIVE** **TUATAPERE DISTRICT LIONS**

Hay, Baleage and Silage Competition

**Friday 10th June 2022**

**at 134 Grove Burn Road**



*The Hay and Baleage will be auctioned during the afternoon. The recipients of the day's profits are Hospice Southland, Tuatapere Free Ambulance Services, Education Fund within the Community.*

We are at present contacting all farmers with Pit Silage and a local Lion Member will be in contact with those farmers shortly. If we miss someone please contact **Charlie Copeland 027 669 1529**  
Entry for this competition will be \$95.00 + GST of which 100% will go to the nominated charities.

Those entering this section of the competition have a chance of winning a generous major Prize. You are almost guaranteed to collect a spot prize as long as you are present on the day.  
FARMERS WHO DONATE 3 OR MORE ENTRIES WILL HAVE AN EARLY CHANCE AT THE PRIZE BOARD.

One entry comprises of:

- 8 small bales per entry or
- 1 large hay bale or
- 1 bale of baleage
- 1 entry silage (pre judged)

Donations of straw will be gratefully received.

A Lions Member will contact farmers approximately 1 week prior to the competition.

The auction of entries will be mid afternoon.

We hope to sell 200 bales baleage, 200 conventional bales and 50 large bales of hay.

This year we have several new sponsors as well as more demonstrations of ALL the new motorbikes and some new 4 x 4 Utes. Farm machinery items will be on display.

Several competitions during the day include:

- The Best Swede )
- Best Fodder Beet ) Generous prizes for each section
- The Best Turnip )
- The Best Chou
- Guess the weight of a bale of baleage

The Lions Club will be providing food and refreshments at a very reasonable cost. You are all invited to turn up early and participate in the scrumptious light meal that will be available at lunch time.

**We will acknowledge the generosity of our sponsors prior, during and after the competition.**

With over 100 sponsors for our competition day, we have a fantastic prize list.

We remind people that they **MUST be present at prize giving** to participate in the "spot" prizes at the conclusion of the major presentations.

***Over the years the patronage from farmers has increased to almost 100% support,  
so let's try to make our 30th competition the best ever!***

For any further information please contact:

Competition Chairman: **Sammy Sanford: 027 438 2248** or **Stephen Crack: 027 4346 871**

**Charlie Copeland: 027 669 1529**    **Quinton Donald: 027 438 8281**



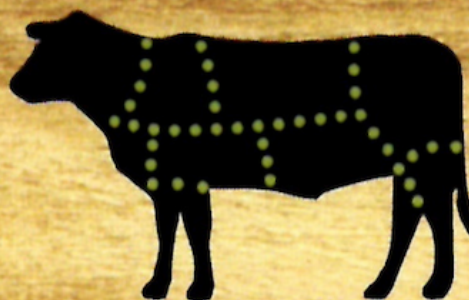


**We are ready to process your  
recreational-hunted game  
from the Roar or from  
Duck Shooting!**



**Wayne Saunders  
Qualified Butcher  
rawfarming@yahoo.co.nz**

**027 457 6350  
82 Clifden Highway  
Tuatapere**



**Cut up the way you want**

**Beef**

**Pork**

**Sheep**

**Venison**

**Other game meats**

**Traditional Smallgoods**

**Remember to  
ring & book in  
your beef!  
It's getting  
busy!**



*Shirley Whyte*  
Your local realstate specialist living & working in Western Southland  
now also an Accredited Justice of the Peace.



for: 

Friendly service, reliability, sound local knowledge  
in Western Southland, Te Anau & Stewart Island  
All enquires welcome - all calls answered

**Harcourts**  M 027 504 52200 O 03 214 4080  
E shirley@harcourtsinv.co.nz W www.harcourts.co.nz

Holmwood Real Estate Ltd Licensed Agent REAA 2008

**Kia ora, Ni hao, Bula**  
Western Wanderer Readers



**Hauroko**  
VALLEY PRIMARY SCHOOL

**TERM 1 ACTION**

Rural Lifestyle Residential  
**For all your Shearing Services.**



**No mob too big  
No mob too small  
We do it all!**

**Contact Ricky Skipper to book in now  
027 351 2620**

Specialising in  
Dairy Conversions  
Rural Fencing  
Post & Rail



**H Gill Fencing,**  
Eastern Bush  
Phone 021 225 5489  
After Hours 03 225 5488  
Email hamish@hgillfencing.co.nz

 **FCANZ**  
Fencing Contractors Association NZ Member

**accelerate**  
PHYSIOTHERAPY

office@acceleratephysio.co.nz  
60 Deveron Street, Invercargill  
(off street parking)  
**0800 291 475**

Accelerate is a gentle form of exercise, effective in providing long term solutions  
after an injury, especially low back pain.



We have interests in:

- > Spinal/Back & neck injuries
- > Sporting Injuries
- > Running, Cycling & Multisport
- > Men & Women's Pelvic Health
- > Acupuncture
- > Balance & Dizziness
- > Workplace Injuries / Ergonomic Onsite
- > Work Evaluations & Educations
- > Pilates

Joel Barnes  
BPHYT, BExSci

Andrea Robertson  
BPHYT, PG Cert ACUP

Andrea Murray  
Dip PHYT Dip M.T.

Find us on  facebook

[www.acceleratephysio.co.nz](http://www.acceleratephysio.co.nz) 



Two Year 7&8 teams attended The Great Southern Race (triathlon) in Stewart Island. What an amazing opportunity thanks to Rakiura School and to Real NZ for support with transport - wow!

Kowhai designed their dream vehicle to transport them places on their learning journey. They also featured as active citizens through their Maths Inquiries in the Southland District Council Bulletin. Watch this space for more from our future leaders!

House Day was super fun with a mufti day and activities with tuakana-teina shown throughout. Our children thrive when these opportunities to collaborate together are presented.



## HAUROKO VALLEY ANZAC SERVICE

To conclude Term 1 we held a special Anzac Service. It was the first opportunity for us to welcome our friends and family back to HVP - yay! Our Year 7&8 students led our service having prepared Anzac silhouette soldiers and animals with in-depth information on the back of each.

Each class presented poetry, writing, or art sharing their knowledge of Anzac. HVP students' engagement in localized learning showcased the New Zealand Curriculum - Aotearoa Histories.

We were privileged to host a very special guest - Ann Robbie. We acknowledged her phenomenal contributions to the restoration of Southland's War Memorials and Honours Board with special tributes. It was a perfect end to our Term together.

## TERM 2 EVENTS

This Term we train for Cross Country with our inter-school competition at Thornbury. Three teams go to Invercargill weekly for inter-school hockey. Our Year 5-8's prepare for Young Einsteins. The Year 5&6's upskill for the Southland Rippa Rugby Carnival. In between Kowhai is set to visit Bill Richardson's Transport World. Our Year 7's head to Adventure Southland for team-building challenges. The Year 8's are looking forward to NYLD in Dunedin for inspirational stories. To end this action-packed Term 2 our Agri Kids Team heads to Nationals in Whangarei. We look forward to sharing these adventures with our *Western Wanderer whanau* soon!



## Registered ELECTRICIAN

For all electrical work  
*No job to small*  
A/Hours service available

Jay Brownlee  
8 Carlyle Street, Tuatapere 9620  
A/H 03 226 6673  
Mob 027 4965 863  
sparkieintuatapere@gmail.com

For all your Accounting and Tax Solutions

Ask for Janice or Trevor England

 03 2266110

Aparima Accounting Ltd  
57 Main Road Tuatapere

## CANTERBURY CARS **4WD** Specialists

For all your vehicle requirements

Cars, utes, 4WDs, vans

Finance available

Contact: Murray Dowling  
027 556 2655

Visit our website  
[www.canterburycars4x4.co.nz](http://www.canterburycars4x4.co.nz)





**C: 0274 247 102**  
**T: 03 225 8652**  
**E: admin@drakeplumbing.co.nz**

**KIERAN DRAKE**  
 Certifying Plumber  
 & Drainlayer



**Liquid Foliar Spray Contracting**

- ✓ Fertiliser
- ✓ Fish Fertiliser
- ✓ Gibb & NBoost
- ✓ Herbicide
- ✓ Humates
- ✓ Soil & Herbage Testing

**Jon – 021 575 071**



*Melanie - your local salesperson*

I am proud to be serving my local area, helping people from all walks of life meet their property goals.

After some great sales so far in 2022, I have a number of buyers still looking.

If you would consider selling, give me a call!

**Mel Muldrew**  
 021 068 5262  
 melanie.m@todddco.nz  
**TODDCO.NZ**  
William Todd & Co Ltd, Licensed (REAA 2008)



**Choose Local. Choose Melanie.**  
**Serving Southland since 1865.**

## LOCAL HISTORY - SPECIAL FEATURE

# Was Dorothy Really Ripped Off?

By Des Williams

It's fifty years ago next month [July 1972] since American singing duo Karen and Richard Carpenter released an album containing the song, 'Top of the World'. Readers may be familiar with the song, the tune or at least some of the lyrics. 'Such a feelin's comin' over me/There is wonder in most everything I see ...' And the chorus: 'I'm on top of the world/ looking down on creation/And the only explanation I can find...'

If you are tapping your fingers to the melody in your head, did you also know a Tuatapere woman, Dorothy Sheriff, is purported to have played a part in writing the song? I say 'purported' because the lyrics are officially credited to John Bettis and Richard Carpenter. No mention of Dorothy anywhere.

My question is, should there be?

Dorothy was born at Riverton on 10 September 1931 and raised at Tuatapere, second of five children to William George Sherriff (1905-1982) and Heather Robson Sherriff (1907-1973). She started her education in 1936, upon the completion of which she attended Dunedin Teachers' Training College, graduating in 1949. She then spent a couple of years teaching at Christchurch.

Our next 'positive sighting' has Dorothy in London about 1953 with several other New Zealand friends, including Shona McFarlane of Dunedin. It is from McFarlane's book, 'White Moas & Artichokes' (Hazard Press, 1993) that comes the essence of this story.

In a chapter titled 'On top of the World', McFarlane relates how, in 1954, Dorothy married an Englishman, Charles Bostle, who was 'one of the British experts who helped build Kuwait up from the sand.' Charles had served with the British Royal Engineers in Egypt and Syria during World War II, eventually attaining non-commissioned officer rank. He was working in Kuwait as Director of the Public Works Department.

According to McFarlane, the couple had a son named Bill and Dorothy became friend, confidante and travelling companion to a Kuwaiti princess to whom she taught English. The Bostles returned to Christchurch in 1961 when Kuwait became an independent nation. Charles died there in 1969, about which time Dorothy resumed her teaching career.



people 'bastards' and she certainly placed Karen and Richard Carpenter in that category. She explained how Dorothy had written a poem the night after her mother's funeral at Waimate. The poem began with those lines, 'I'm on top of the world looking down on creation ...' She decided it might make a good lyric for a song and sent it to the Carpenters. They kept it, sent her a cheque for about two hundred dollars, changed a few words and turned it into a classic.' Despite sustained efforts (because of the song's success), Dorothy was never able to get more money out of the Carpenters because they, 'having changed a few words', were within their legal rights not to pay her royalties or give her writing credit.

From this distance, McFarlane's story does not stand absolute scrutiny. The major anomaly - Dorothy's mother died on 1 October 1973. The Carpenters released their album in July 1972.

In pursuit of further evidence, this writer contacted Dorothy's son, Bill Bostle, who has spent most of his adult life in Australia. Importantly, in this context, Bill is also an accomplished musician, a member of the Australian Performing Rights Association, a songwriter with knowledge of song-writing mechanics and laws, and a concern for accuracy in attribution, research and publication.

Bill Bostle says he became aware of Dorothy's purported authorship some years ago and did his own investigations. While he deduced it to be 'not impossible that his mother wrote a poem or lyric subsequently altered and used by the Carpenters', he believed it to be highly implausible.

"Poetry and song lyrics tend to have either a strong element of the writer's 'voice' or are generic for commercial appeal. Personally, I would categorize 'Top of the World' as falling into the latter class. However, if it had originally been a poem in the writer's authentic 'voice' written in connection with her own mother's passing, I can detect nothing about the eventual published lyric that is consistent with my mother's 'voice'.

... to be continued next issue

23

*Your Local Graphic Designer & Print Specialist*

# McMAHON

## design studio

**9 Cumnock Street, Wallacetown**

P: 03 235 8967 M: 027 242 8109 E: [mcmahondesign@outlook.com](mailto:mcmahondesign@outlook.com)

**WE ARE THRILLED TO ANNOUNCE THAT WE HAVE ADDED THE**

silhouette
CAMEO PRO

**TO OUR LINE-UP OF FINISHING MACHINES.**

*The Silhouette Cameo 4 Pro desktop precision cutting machine is the perfect addition to the graphic design and printing services that we offer, and opens up a multitude of cutting & specialised finishing possibilities for your next project.*

**This means we can now offer these specialised finishing options in-house.**

**Making these services more cost effective and fast for all print jobs whether it be a small one off project or large print run.**

It can fit media up to a maximum width of 60cm and length of 305cm (with the roll feeder attachment) and will work with various media up to 3mm thick.

**FEATURES:**

- Precision die-cutting on a wide range of materials, perfect for large or small details.  
*Perfect for die-cut office stationery, stickers, business cards, invitations, gift tags, custom folders, gift boxes & bags, cutting intricate designs and sewing patterns etc..*
- Specifically designed for cutting adhesive, printable and heat transfer vinyl.  
*Think vinyl decals & lettering, wall or window art, adhesive stencils, t-shirts, hoodies & other fabrics, mugs & glassware, signs, etc..*
- Embossing/Debossing paper, card, leather, chipboard, balsa wood etc.  
*Great for adding texture & depth to paper items, stationery, invitations, gift cards, book covers etc.. or creating engraved wooden signage, or coasters.*
- Engraving metal sheets & glass (using stencils and etching cream).  
*Perfect for jewellery making, key rings, signs, wall art, custom glassware..*
- Precise drawing and sketching with the pen tool adaptor.  
*Add artistic flair to your designs, great for wall art, greeting cards and calendars*
- Scoring and folding on paper & card stock to create 3D shapes and forms.  
*Great for party favour boxes and bags, product displays, table decor etc.*
- Burnishing wood (using stencil and burning paste with heat gun).  
*Great for customising wooden gift items i.e. coasters, chopping boards, spoons etc..*
- Foiling with metallic foil sheets. - *Perfect for adding sparkle to any paper project.*

**COMPATIBLE MATERIALS:**

- Paper & Card Stocks & Craft Board
- Vinyl
- Stencil Material & Thin Acetate
- Chipboard & Balsa Wood
- Crepe Paper
- Foam Sheets
- Leather, Cotton & Felt
- Adhesive Sticker Paper
- Temporary Tattoo Paper
- Adhesive Window Film
- Metal sheets & pre-cut forms
- Magnet Paper
- & many more....

*Please email us your enquiry if you have a product in mind that is not on this list.*

***All designs are customised to suit your needs.***

***Contact us today to discuss your project.***





**Rabco Ag Ltd** – 021 362 766 – [admin@rabco.nz](mailto:admin@rabco.nz)  
Agricultural Contracting Specialists - Western Southland



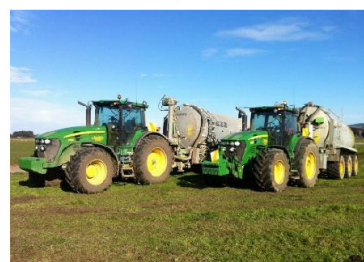
**Full silage  
& baling  
service**



**Cultivation – including Direct Drill & Precision Drill**



**Effluent – Excavators - Hedgetrimming**



## WAIAU HEALTH TRUST – May 2022

As you would imagine, with COVID rife in the community the practice has been very busy of late, with some of our staff being affected we have been running on skeleton staffing to protect both staff and our community, while trying to keep the doors open, continue day to day practice it has been relatively hectic. If your appointment can be dealt with as a telephone consult, rather than face to face, please let us know when booking. I would like to take the opportunity to thank you, our community, for your patience during this pandemic when business hasn't always been as usual.

### Flu Vaccines 2022

Flu Vaccines are now available at the practice. Please phone to book. In many cases it is free. Immunisation is the best way to protect our communities from infection and serious illness. With the borders closed due to the COVID-19 pandemic, Aotearoa New Zealand has had few to no influenza infections for the past two years. This reduction in infections is likely to have led to lower-than normal immunity against the virus in the New Zealand population. As COVID-19 restrictions ease and borders re-open, it can be expected that a resurgence of respiratory viruses will follow, and seasonal viruses may not follow typical seasonal patterns. The lack of seasonal infection in 2020 and 2021 will likely result in reduced residual immunity and contribute to a higher risk of serious disease. While we can expect to have influenza circulating in our community this winter, we cannot predict what this influenza season may be like, therefore, preparation is of the utmost priority.

### COVID 19

Covid is currently prevalent in our community. It is important that if you have a positive RAT result that you register it in your 'My Covid Record' or by phoning 0800 222 478. Once you have registered your positive result, someone from our team will be in touch as part of the Covid Community Care Module. If you have had Covid, IMAC recommends that they should start or continue their vaccination from 3 months after recovery. After you've had a COVID-19 infection your antibody levels will be high due to your body's immune response, so the three-month gap gives your body time to wind back and get the most benefit from vaccination.

### Tuatapere Medical Centre Facebook Page

If you are on Facebook, our Tuatapere Medical Centre page is worth a 'like' to keep you in the loop with up-to-date happenings at the medical centre.

Kind Regards

Jo Sanford (Manager) **Cell: 027 295 0429**



**Waiau Health Trust**  
**69a Orawia Road, Tuatapere**  
**Approved Registered ACC Provider**  
**Monday to Friday**  
**9:00am – 4:30pm**  
**Ph.: 2266123**

*Practitioner Hours*  
*Amanda McCracken (NP) – every*  
*weekday*

*Sheryl Eden (NP –every Monday &*  
*Tuesday)*

**Physiotherapist**  
*Tuesdays & Thursdays*  
*Phone for an appointment*

*Podiatrist*  
*Visits regularly –*  
*Phone for an appointment*

*Warts/Minor Skin Lesions*  
*Liquid Nitrogen treatment available*  
*Phone for an appointment*

*Homebased Maternity Care*  
*We are offering this service*  
*in the patient's home.*  
*Please contact Jo Sanford*  
*on 2266123 for enquiries.*

*Day Activities Programme for*  
*the Elderly*  
*Every Tuesday & Wednesday*  
*Please phone for further information.*

*District Nursing*  
*Available as required by referral*



## INDEPENDENT MIDWIFE

**ISOBEL DEVERY**

*Caring for women throughout  
Pregnancy, Birth till six weeks  
Post Natal.*

*Choices for place of birth,  
Home or Winton Birthing Units  
or Kew Hospital.*

*Free pregnancy tests  
available on request.*

**Phone: (03) 22668822  
027 2267020**

©Pecoraro, EthicGraphics®

### Sewing and Mending Services Available

Experienced machinist offering fast, reliable service with very reasonable rates.

I will mend/make anything from zip replacements to curtain making - just ask!

Free quotes and pick-up delivery service within Tuatapere.



Contact **Deborah**

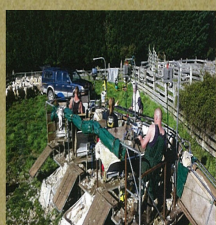
**(03) 226 6783 or 021 0305 667**



## DAGWOOD DAGGING

*Available now to all new and existing  
customers for all your crutching  
requirements.*

*3 Stand or Single trailer available  
7 days a week, wet or dry.*



*No job too big or too small.*

*Competitive rates*

**Jeff Chambers**

**027 3042 241**

## HISTORIC FEATURE ARTICLE

*contributed by  
George Charlton*

*The next series contributed by George feature 'Movers and Shakers' who have contributed richly to the Tuatapere community. The following article appeared in The Southland Times edition- Tuesday, 14th April 1992.*

## Publican Dedicated to the Tuatapere District

David McNay is one of Tuatapere's proverbial 'movers and shakers'. If there's something major, or even minor, going on in Western Southland you can bet your bottom dollar the irrepressible Waiau Hotel proprietor will have an organising hand in it. His commitment to putting the Sausage Capital of New Zealand on the map is undeniable and his reputation as a host legendary. There's little that's complicated about the 50 year old father of three. Meeting people and organising events are his simple, yet favourite, pleasures.

Born and bred in Orepuki Mr McNay is in his 9th year running the 'Waiau', arguably the focal point of the Western Southland community. He came to Tuatapere with 13 years experience in the liquor industry, all with New Zealand Breweries. He worked first in Southland as a sales representative and later in Dunedin as Otago-Southland sales manager. Before joining New Zealand Breweries Mr McNay worked on a farm at Te Tua near Tuatapere for 8 years, and then as a sales representative for a vaccine company for a year.

Mr McNay has found Tuatapere to be a close-knit community where everyone helps each other and where new opportunities are always created. He did not find it hard taking over the Hotel because he already knew 85% of the people. Whether people come in for 'a drink', a meal or a special event, like a St Patrick's Day or Melbourne Cup Day promotion, they are well catered for. The days of the hotel being a 'booze barn' are long gone and so are the traditional days of waiting all day for customers to come in.

A compulsive organiser Mr McNay has been the director of the popular Wild Challenge Endurance Event for the past 2 years. 44 people entered the event this year which is double the inaugural turnout last year. Mr McNay sees events like the Wild Challenge, with their obvious financial and promotional spin-offs, as extremely important to the community. "The Wild Challenge brought people to Tuatapere to see countryside they wouldn't have seen otherwise", he said.

Mr McNay was also responsible for sponsorship and publicity for Edsel Forde's successful world record

Mr McNay was also responsible for sponsorship and publicity for Edsel Forde's successful world record shearing attempt at Blackmount's Brunel Peaks Station on 16th February (1992). Mr McNay became involved, not only because of Forde's affiliation with the area, but because of Edsel's mother. Pat, Edsel's mother, is the Waiau Hotel Bar Manager. Dave McNay is always busy and this year has been no exception. Apart from co-ordinating the 'Wild Challenge', the involvement in the 'World Shearing Record Attempt' and running a busy country pub he has had his work cut out as national vice-President of the Hotel Association of New Zealand.

Mr McNay attributes his staying power, when he's got so much on the go to support from family and staff and says categorically that we couldn't handle it on his own. Most days sees him up before 8.30am and seldom in bed before midnight. Freer liquor laws and Sunday evening trading means running a pub like the Waiau is a seven day a week operation. Mr McNay is the Hotel Association's Southland Branch President as well as National Vice President. He has ruled out standing for the top job at this stage. Mr McNay believed the National Presidency is more suited to a retired publican with time on his hands. "My own hotel and family must come first", he adds.

As it is McNay visits Wellington six times a year for Association Board meetings and says he couldn't fit in the extra demand on his time. The Presidency would make Mr McNay the first Southlander to achieve high office in the Association and believes that from a regional perspective it's excellent. Up until five or six years ago few people knew about Tuatapere. Mr McNay says that has changed with the development of the Southern Scenic Route and the area's reputation as the 'Sausage Capital of New Zealand'. People come from miles around to sample Tuatapere's sausages. At the end of last month a busload of visitors from Timaru ordered about 50 kg of Western Southland's finest to take back with them. Western Southland is also proving increasingly attractive as a tourist destination for North Island tour companies. Mr McNay is brimming with positivism about Tuatapere. 'No' and 'Can't' are apparently not in his vocabulary.

The town has been hit hard by a series of government policy decisions affecting its sawmilling and logging industries. But Mr McNay prefers not to dwell on the negative side effects these policies have had on the town. Instead he accentuates the positives- like the way the community rallied round to help those who lost their jobs because of the export ban and united to reactivate a medical service in the town. Tuatapere's positive attribute, Dave McNay believes, is that "there is a feeling Tuatapere will never die."

# PROPERTIES WANTED!

**Contemplating selling? You might be surprised by what your property could fetch on today's market**

Contact Julie today for a free appraisal and to discuss how you could take advantage of this bouyant property market



**Julie Guise**  
021 256 4164  
julieguise@sre.co.nz

**SOUTHLAND REAL ESTATE LTD**  
Licensed under The Real Estate Agents Act 2008

**SOUTHLAND REAL ESTATE LTD**  
Licensed under The Real Estate Agents Act 2008 MREINZ

For all your fencing requirements

# WESTERN FENCING

SHEEP | DAIRY | DEER



Call BEVAN 0277 413 213

# ADS

## ANDERSON DRAINAGE SERVICES

*Keeping Southland Flowing*



- ✓ Tile Cleaning
- ✓ Culvert Cleaning
- ✓ Septic Tank Blockages
- ✓ Domestic Blockages
- ✓ Rural Drain Blockages

Fraser Anderson  
021 162 0210  
fraseranderson1@gmail.com  
Forest Hill, Southland  
Follow us on Facebook  
Call us today!





# FLY IN FOR MAY DEAL\$

<p><b>\$13.99 EACH</b></p> <p>Jim Beam; CC 440ml 4.8% (inc zero); 355ml 7% all 4pk cans</p>	<p><b>\$19.99 EACH</b></p> <p>Southern Comfort 375ml 10pk cans Jack Daniel's 6pk 330ml bottles Jack Daniel's 8pk 330ml cans</p>	<p><b>Not Stocked</b></p> <p>Jack Daniel's &amp; Cola Double Jack 250ml 10pk cans</p>	<p><b>\$22.99 EACH</b></p> <p>Cody's (incl zero) 7% 250ml 12pk cans</p>	<p><b>\$24.99 EACH</b></p> <p>Cruiser 7% 12pk can range</p>	<p><b>Not Stocked EACH</b></p> <p>ODD Company 10pk can range</p>	<p><b>Not Stocked</b></p> <p>JB Gold; CC Premium 250ml 7% 12pk cans</p>	
<p><b>\$24.99 EACH</b></p> <p>Smirnoff Ice Double Black (ex guarana) 7% 250ml 12pk can range</p>	<p><b>\$25.99 EACH</b></p> <p>JB; Canadian Club 330ml 4.8% 10pk bottle ranges</p>	<p><b>\$29.99 EACH</b></p> <p>Tui Vodka Soda (ex bourbon) 7% 250ml 18pk cans</p>	<p><b>\$33.99 EACH</b></p> <p>Woodstock 7% 250ml cans 5% 330ml bottles all 18pk</p>	<p><b>\$36.99 EACH</b></p> <p>Jim Beam Canadian Club (incl Zero) 18pk 330ml cans</p>	<p><b>\$39.99 EACH</b></p> <p>Long White 15pk bottle range</p>	<p><b>\$9.99 EACH</b></p> <p>Jacobs Creek (ex Sparkling range) Montana Classic ranges</p>	<p><b>\$12.99 EACH</b></p> <p>Wolf Blass Yellow Label range (ex PN)</p>
<p><b>Not Stocked</b></p> <p>Grant Burge Ink range</p>	<p><b>Not Stocked</b></p> <p>Pepperjack range</p>	<p><b>Not Stocked</b></p> <p>Devils Staircase Pinot Noir Rua Pinot Noir</p>	<p><b>\$35.99 EACH</b></p> <p>Seagers (incl lime) Ivanov 1L</p>	<p><b>\$35.99 EACH</b></p> <p>Larios Original 1L JB Honey; Devils Cut; Black 700ml Midori 700ml</p>	<p><b>Not Stocked</b></p> <p>42 Below Pure (ex flav) 700ml</p>	<p><b>\$37.99 EACH</b></p> <p>Jameson Jameson Cold Brew Absolut; Beefeater flavd ranges all 700ml</p>	<p><b>\$37.99 EACH</b></p> <p>Malibu Kahula (incl salted caramel) 1Ltrs</p>
<p><b>\$39.99 EACH</b></p> <p>Finlandia 1L Jack Daniel's 700ml</p>	<p><b>\$41.99 EACH</b></p> <p>Coruba (incl Gold) 1Ltr</p>	<p><b>\$42.99 EACH</b></p> <p>Jim Beam Canadian Club (incl spiced) 1Ltr</p>	<p><b>\$52.99 EACH</b></p> <p>Bombay Sapphire 1L Bombay Bramble 700ml</p>	<p><b>\$54.99 EACH</b></p> <p>Mt Gay Eclipse Jagermeister 1Ltr The Naked Malt 700ml</p>	<p><b>Not Stocked</b></p> <p>The Glenlivet Founders Reserve Caribbean Reserve 700ml</p>	<p><b>\$62.99 EACH</b></p> <p>Maker's Mark 1Ltr</p>	<p><b>3 FOR \$12.99</b></p> <p>Kingfisher Strong 7.2% 500ml cans</p>
<p><b>\$19.99 EACH</b></p> <p>Tiger; Tiger Crystal; Crystal Ultra Low Carb 12pk bottles</p>	<p><b>\$23.99 EACH</b></p> <p>Haagen 15pk bottles</p>	<p><b>\$23.99 EACH</b></p> <p>Kingfisher Sol 12pk bottles</p>	<p><b>\$23.99 EACH</b></p> <p>Orchard Thieves 12pk range</p>	<p><b>\$24.99 EACH</b></p> <p>Asahi 12pk bottles</p>	<p><b>\$25.99 EACH</b></p> <p>Lion Red; Waikato; Speights Summit 15pk bottles</p>		
<p><b>\$26.99 EACH</b></p> <p>Monteith's (classic &amp; batch brewed ex cider) 12pk range</p>	<p><b>\$26.99 EACH</b></p> <p>Steinlager 15pk bottles</p>	<p><b>\$29.99 EACH</b></p> <p>Heineken 15pk bottles</p>	<p><b>\$36.99 EACH</b></p> <p>Tui; Export Gold; Extra Low Carb; DB Draught 24pk bottles</p>	<p><b>\$39.99 EACH</b></p> <p>Carlsberg 24pk bottles</p>	<p><b>\$41.99 EACH</b></p> <p>Export 33 24pk bottles</p>		

Promotion period between 1/5/2022 to 31/5/2022. While stocks last. Promotion only available at participating stores. Please contact your local store to confirm whether they are participating in the promotion and check the pricing in-store prior to purchase. Online pricing will vary.



100% **NEW ZEALAND** OWNED AND OPERATED  
thirstyliquor.co.nz

FOLLOW US ON SOCIAL MEDIA



ASK ABOUT  
LOYALTY CARD  
BENEFITS &  
GIFT VOUCHERS





# Ratty Says ...

Waiau Memorial Library

You won't believe what happened to me. It was terrible.

It was traumatic. It was EMBARRASSING! They made me have a bath. That's right, a bath. You know, where you have to use soap and get clean. They said I was scruffy, that I looked like I'd been rolling around in the dirt (that part might be true) and that I smelled bad. How rude! No one appreciates the hard work needed to get just the right smell.

They tried to bribe me with a bubble bath and a rubber duck. As soon as they turned their backs I jumped out of that bath and ran for it. It took them ages to catch me. I probably should have hidden instead of running around yelling

"You can't catch me." Because when they did catch me they stuck me in the washing machine so I couldn't escape. I think that was a bit unfair. I tumbled and turned, splished and splashed and got heaps of sudsy water up my nose. Then, they put me on an extra 13 minute spin dry. They said it was because I probably wouldn't dry myself properly. They were right, I was planning to run off and find some mud to jump in. I figured it would stick better if I was wet. It turned out I wouldn't have been able to run away, I was all squished up from the washing machine and I was very, very, very dizzy. I would have fallen flat on my face.

The humiliation didn't end there. They decided it would be fun to hang me out to dry on the clothesline, just because they could. They hung me by my ears! I think it was payback because I laughed at them when they had to chase me

around the house after I escaped from the bath. Humans have no sense of humour. But that's OK, because I'm already plotting my revenge. All I have to do is wait for it to rain and find me some mud and roll in it.

Note: No rats were harmed in the making of this story. Their dignity, however, went down the sink with the dirty water.



## Tui Base Camp



**Open from 8:30am every day!**

*Kitchen open until at least 7.30pm*

**Come in and check out our specials**

### Duck Shooter's Breakfast

**Sat 7th May**

From 6am

Tui Base Camp Big Brekkie  
& a Pint **\$20**

*(Pint can be swapped for  
a hot drink)*



**All Day Special: Coffee & Muffin \$8**



**Don't forget we now have a mini-van!**

Contact us to organise a night out at  
Tui Base Camp (pick-up and drop-off).  
Enquires to **James 027 837 3521**

**For all of your dine in and takeaway  
requirements including:**

In-house roasted Amore Coffee

In-house made pies, sausage rolls,  
cheese rolls

Range of breakfast options

Packed lunches

Catering

**Phone: (03) 226 6250**

[www.tuibasecamp.co.nz](http://www.tuibasecamp.co.nz)



**Keep an eye on our  
Facebook Page  
for our  
latest updates!**



## TUATAPERE OUTDOORS & HARDWARE

For all your

Gardening tools, lawn care, garden hoses, insect and disease sprays, potting and compost.

We have those building requirements for that weekend job with a good selection of silicone, nails, screws and bolts.

New fishing rods and reels, fishing lures, good selection of soft bait, fishing nets, flounder and eel nets.



Good selection of giftware.

Come in, check out what we have.

### Contact:

Judy **027 225 8192**

Paul **027 890 3602**

Shop **(03) 226 6363**

## YOUR BUSINESS CARD COULD BE HERE!

### CONTACT

**[yourwesternwanderer@gmail.com](mailto:yourwesternwanderer@gmail.com)**

### FOR PRICING/DETAILS



# 027 252 7933

- ☒ Renovations
- ☒ Extensions
- ☒ New Builds
- ☒ Sheds/Farm buildings
- ☒ Decks
- ☒ Pre-purchase house
- Inspections

*Call us for any building requirements*

Ph 027 252 7933 email: [aaroncbld@gmail.com](mailto:aaroncbld@gmail.com)



## TUATAPERE TE WAEWAE Community Board

### Margaret F Thomas, Board Chair

[arpad@xtra.co.nz](mailto:arpad@xtra.co.nz)

03 226 6104

027 231 5581

The Tuatapere Te Waewae Community Board have been working with staff member Nick Hamlin, re the Tuatapere Railway Station. We have decided that the Railway station building will be painted and repaired. (Please note that this is all outside work.)

The RSA Lounge and passageway has had new carpet laid. This has made this room an ideal meeting space. We have replaced the old open fire with a heat pump. Comfortable furniture is available as well as the RSA crockery.

People would have noticed that the Jack and Mattie playground has had some upgrading recently. The foundations have been replaced because of rotting timber (on the plastic equipment.) The playgrounds at Orepuki and Monowai also need some repairs.

I attended the annual meeting of the Clifden Recreation Reserve. (This includes the Golf Course.) It was a beautiful hot day, and we held the meeting outside. This Golf Course is a credit to the members with it's beautiful mowed vistas and greens and well-maintained trees.

All the reserves are usually maintained by volunteers. Thanks, keep up the good work.

The Rural Support Trust has been busy again. I hope some of you people who work on the land had time to drop in for a chat and a cuppa. You may have found time to go surfing as well. Thanks to the Trust.

Water is still an issue for most of us. Please don't waste it.

Camping Grounds and Open Spaces have been well used this Summer. Thank goodness we have great toilet facilities around the district.

The Hump Track has had many trampers visit this season. The Tui Trails has an excellent information pamphlet. Check at the local business for this.



**George Harpur, SDC Councillor, Waiau Aparima Ward**

Greetings to all as we welcome in some reasonable rain which will be well received by the economic sector of our community. Although in general, farming and its associated contractors may be our main industry, the other smaller players also form a vital part of our community and should be given our full support.

There is little doubt that the tourism industry will, in time, be a major contributor to our local region and I feel we must all do our share to promote our facilities whether we have a financial interest or not. Our families need work to have a healthy and secure future and it is up to the current crop to assist this. Interestingly enough we were enjoying a coffee at a Cromwell restaurant and noticed a combination of four screens showing what the attractions are in and around the area. With an influx of people walking on the new great walk there will be partners who will be left behind in Tuatapere with time to fill and it is in the local interest that they are introduced to our local facilities, Galleries, coffee shops, walking tracks, beaches, historic places, museums, Libraries and all places of general interests in the local region from Orepuki to Monowai.

Monowai is the location of one of our newest businesses having the Brunel Peaks Café just opened to business in the past month. Strategically located on the corner of the Blackmount Monowai road junction. Serving great food, excellent coffee, fully licensed and a great location for a lazy break for travelers, boaties, trampers, hunters etc.

All in all, I believe the region is in for an exciting future and it is up to you, the people of this great region to make it happen.

Cheers to all.

PLEASE HAVE YOUR ARTICLES, NOTICES, OR UPDATED ADVERTS FOR THE  
WESTERN WANDERER SENT IN BY



**20th of MAY (for JUNE's Issue)**  
**yourwesternwanderer@gmail.com**



**Neat Cut**

Phone: Anita Green 027 506 2418  
Tuesday 9-5pm, Thursday 10-8pm, Friday 10-5pm - Appointments are encouraged.

## CHAMBERS REPAIR SERVICE

**45 Half Mile Road, Tuatapere**

**Ph: (03) 226 6654**

- 24 hour Self Service Fuel
- Full Mechanical Workshop
- NZ Post Centre
- Agents for Wide Span Garage
- MTA Gift Vouchers available



**Duck Shooting Season opens 7th May**  
Duck License on sale from 11th March  
**Cost: Adult \$100, Junior \$23, Child \$4**

### Opening Weekend Limits

20 Mallards, 10 Paradise, 5 Black Swan

### Daily Limit per day thereafter

10 Mallard, 6 Paradise, 5 Black Swan

**Day Licenses available from 16th May**



PASTURE METER READING THAT'S QUICKER  
AND EASIER, WITH AT THE GATE REPORTS

- Specialist in quality pasture meter reading with advanced sensor technology
- Provide 200 measurements per second or 18,500 readings over a single 500m pass
- Provides a fully integrated electronic support system
- Provides a secure web-based storage of information with easy access
- Prompt generated feed wedges for rapid decision making and seasonal comparisons
- Generate reports at the gate, supplying valuable pasture cover data and comparable results every time
- Improve heath & increase animal hydration
- Enhance production & improve water quality
- Reduce bacterial/algae contamination of trough water

### CLEAN TROUGH WATER MEANS IMPROVED LIVESTOCK HEALTH

Now 2 bikes  
available  
for pasture  
metering



Brett George • P 027 351 3408



E [platemeterservices@gmail.com](mailto:platemeterservices@gmail.com)



# BARRETT *Ag* LTD

FULL SILAGE AND BALEAGE SERVICE



**ALL CULTIVATION**  
INCLUDING DIRECT DRILL  
AND STRIP TILLING - PRECISION PLANTING



**EXCAVATION**  
20 TONNE DIGGER/ GRADER  
D85 BULLDOZER/ ROLLER  
TIP TRUCKS AND TRAILERS



Barrett Ag Ltd  
Ph: Kahu- 027 5183 448  
E: [barrettagltd@gmail.com](mailto:barrettagltd@gmail.com)  
FB: Barrett Ag





**For Landscaping,  
Land Maintenance,  
Gravel Supply & Cartage**

**GRADES OF CRUSED & SCREENED GRAVELS,  
ALKATHENE LAYING, ROOTRAKING,  
FARM TRACKS, DAIRY LANES**



**ELEVATOR SCRAPER,  
BOBCAT & ATTACHMENTS,  
LANDSCAPING, TRENCHING AUGERS**

**Supplies of Gravel Ex Waiau River**

River Run Screened Grades Concrete Gravel Pea Gravel  
Rejects for soak holes Crushed - AP30 & AP65  
Peebles for Sheep and Cattle yards and calf sheds  
Fines suitable for cow lane capping

**K J SUTHERLAND  
GRAVELLING &  
AGRICULTURAL CONTRACTOR  
2475 OHAI-CLIFTON H/WAY  
ORAWIA RD2 OTAUTAU 9682**

**Ph 0274 367 934**

**K.J. Sutherland  
Contracting  
Bobcat T190**

**With attachments: Landscape Rake,  
Augers and Trencher**

**Suitable for all landscaping, shed and yard  
maintenance**

**Muck-spreader and tip trailer available**



**PHONE KEVIN  
027 367 934 / (03) 225 5716**

**MILLARS**

- PLUMBING
- GAS FITTING
- DRAINLAYING
- LICENSED BUILDER

Master Plumbers  
f Ph 027 4340 705 or 03 225 8567



We specialise in:

**Resource consents  
Farm environmental plans  
Policy advice  
DOC concessions  
Landscape plans & assessment**

We take care of the paperwork,  
so you can do what you do best!

Sonya: 027 5050 077  
Rebecca: 027 4246 129  
www.slwp.co.nz  
Locally owned & operated





**Agricultural Contractors servicing Western Southland and beyond.**

**BALAGE - SILAGE - GROUNDWORK - FEED TRADING**  
**Nigel 021 226 6156 / [fowlecontracting@gmail.com](mailto:fowlecontracting@gmail.com)**



## Tim and Superior go the extra mile

Are you frustrated with the lack of service from your local fertiliser consultant, peddling the same advice year after year regardless of your production outcomes, environment and sustainability?

Give **Tim Adcock** of Superior Fertiliser Specialists a call. He will bring a whole new meaning to service and client/advisor relationships.

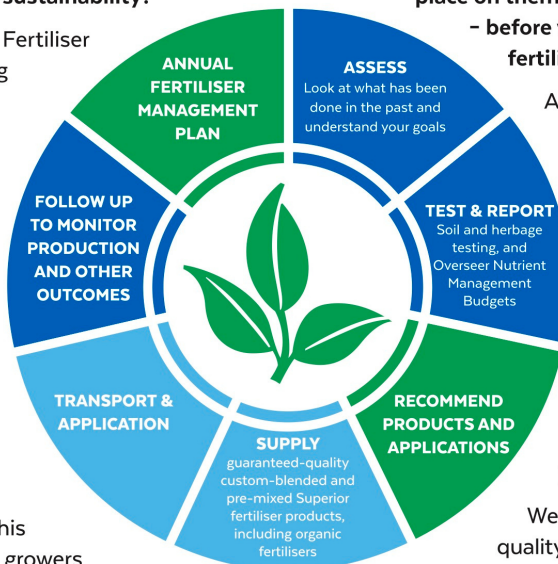
Tim is a key member of the highly skilled Superior team totally committed to helping you develop healthier, more productive soils and plants.

We form a specialist fertiliser company that provides high quality advice and products at competitive prices. We have been doing this for South Island farmers and growers for just on 20 years.

Superior promotes a total soil care package. First, we get to understand the make-up, nutrient status and health of your soils, the demands you are going to place on them, and your production goals – before we apply one kilogram of fertiliser.

A comprehensive regime of vigorous soil tests will be undertaken and the results will provide the basis of a Superior Fertiliser Management Plan customised for your unique situation. This will complement your farm's Environmental Plan and provide the blueprint for an ongoing annual fertiliser programme.

We then supply guaranteed-quality solid fertiliser for your pasture and crops, monitor production and other outcomes, and update your Plans as required.



It's free to talk so don't hesitate to give Tim a call.  
Phone 021 418 224



**Tim Adcock**  
Fertiliser Advisor  
Otago/Southland  
021 418 224  
tim@superior.net.nz

 FERTILISER SPECIALISTS  
**SUPERIOR**  
[www.superior.net.nz](http://www.superior.net.nz)



# TUATAPERE SERVICE STATION

20 ORAWIA ROAD  
PHONE: 03 2266475

## HYDRAULIC FITTINGS & HOSES

WE STOCK A GOOD RANGE OF CRIMP ON HYDRAULIC  
FITTINGS FOR AGRICULTURE HOSES WE CAN ALSO  
REPAIR OR MAKE UP NEW HOSES

## FOR ALL YOUR MECHANICAL NEEDS

Car & 4WD WOF's  
Trailer, Caravan & Motor bike WOF's  
Servicing all vehicles  
Light Engineering  
New Tyres  
Electrical Work  
Scanning of most vehicles

## DUCKSHOOTERS

**We have in stock**

**Ammo, callers, camo nets, cleaning kits and lots more**



NZ TRANSPORT AGENCY  
WAKA KOTAHI

### WE CAN PROCESS ALL YOUR

**REGISTRATIONS  
ROAD USER CHARGES  
CHANGE OF OWNERSHIPS  
VEHICLE EXEMPTIONS  
CANCELANATION OF REGISTRATION  
CHANGE OF HUBOMETER**



### HOURS

**Monday to Friday 8.00am to 5.00pm**