



WESTERN Wanderer

Tuatapere | Clifden | Orawia | Blackmount | Monowai | Colac Bay | Orepuki

Cover Photo: The Great Tuatapere Rubber Duck Races 2022

Issue 242

At a glance ... what events are on this month?

MARCH 2022

| MONDAY | TUESDAY | WEDNESDAY | THURSDAY | FRIDAY | SATURDAY | SUNDAY |
|---|---|--|--|--|---|--|
| Tuatapere Amenities Trust Funding Applications are now open | 1 Meridian's Power Up Community Fund Applications are now open | 2 | 3 | 4 Second Hand PopUp Shop TPC Main Rd 2-4pm World Day of Prayer 10am Tuatapere Presbyterian Church | 5 Second Hand PopUp Shop TPC Main Rd 10-2pm | 6 |
| 7 | 8 | 9 | 10 | 11 Second Hand PopUp Shop TPC Main Rd 2-4pm | 12 Second Hand PopUp Shop TPC Main Rd 10-2pm | 13 Firewood Working Bee - WTCC 10am BBQ to follow |
| 14 | 15 | 16 Tuatapere & Districts Promotions Inc Committee Meeting 7:30pm WTCC | 17 | 18 Second Hand PopUp Shop TPC Main Rd 2-4pm | 19 Second Hand PopUp Shop & Market Day 10-2pm TPC Main Rd Potato in Bucket Competition Judging WTCC 2pm | 20 |
| 21 | 22 | 23 | 24 | 25 Second Hand PopUp Shop TPC Main Rd 2-4pm | 26 | 27 BINGO! WTCC 2pm |
| 28 | 29 | 30 | 31 | 1 Second Hand PopUp Shop TPC Main Rd 2-4pm | 2 | 3 |
| Coming up ... | Waiau Squash Club 2022 Season Players wanted! | Waiau Indoor Bowls Club 2022 Season Players wanted! | Waiau Star Junior Rugby 2022 Season starting soon! Keep an eye on our Facebook Page! | | | |

Special thanks to



SEE INSIDE FOR MORE DETAILS!
Want your event here? Let us know at
yourwesternwanderer@gmail.com

COMMUNITY NOTICES & EVENTS

HANDY PHONE NUMBERS

EMERGENCY

POLICE / FIRE / AMBULANCE: **111**

MEDICAL CENTRE: (03) 2266 123

TUATAPERE POLICE STATION:
(03) 2269 020

TUATAPERE COMMUNITY WORKER:
027 757 5983

HAUROKO VALLEY SCHOOL OFFICE:
(03) 2266 753

WAI AU AREA SCHOOL OFFICE:
(03) 2266 285

TUATAPERE CEMETERY TRUST:
(03) 2266 065

CHAMBERS SERVICE STATION:
(03) 2266 654

TUATAPERE SERVICE STATION:
(03) 2266 475

TUATAPERE FOUR SQUARE:
(03) 2266 898

TUATAPERE OUTDOORS & HARDWARE:
(03) 2266 363

PLEASE HAVE YOUR ARTICLES, NOTICES, OR UPDATED ADVERTS FOR
THE WESTERN WANDERER

SENT IN
BY

20th of March (for the April Issue)

Tuatapere & Districts Promotions Inc

Paula McKenzie, President

We made it through 2021 and 2022 has passed so surely life will return to some sort of normal soon. First up I have a list of people that I would like to shout out a big thank you to ... our editor of the Western Wanderer, the advertisers and those who send us contributions, Waiau Area School for help with the printing, Tuatapere Freight who picks up the WW from the printer, and last but not least, the crew who take time to get the WW into your mailbox - the rural delivery mail people and the volunteer crew delivering in Tuatapere itself. Without any one of them, you would not be reading this now.

Thank you John Timpany once again for putting up and dismantling our Christmas Tree and Tui Base Camp for letting us tap into your power.

Thank you Christine Egerton for looking after our community notice board.

Thank you Geoff Smith for maintaining Lillian's Loop. For any of you who aren't familiar with this short walking track - it starts and ends at the cemetery. It's about 30-40 mins walking time, I think, if my memory serves me right.

Thank you to all those who help change the flags over when required. It's easier and safer when there are a few helping. Our lovely bird flags sustained a bit of damage on the bridge so we are looking at options of a hardier flag for that area. We've got Wayne Edgerton to thank for those stunning bird designs!

A warm welcome to all the new residents to our little piece of paradise. There are a lot of new faces in town. Should you have someone new move in next door to you, would you please share your local knowledge with them. The Western Wanderer has lots of info but there is nothing nicer than a friendly face when you are new in town 😊

We will be holding our Mid Winter Meet and Greet Dinner again this year and we are hoping to tie it in with the first official Matariki celebrations. There will be plenty of notice but just keep that in mind.



The Railway Station is our target project this year. The details of which are in the centre of this edition. Please take some time to look over the proposal. **Your continued feedback** is crucial for this project to move ahead.

We have listened to the feedback from the community survey and hope that this concept addresses most of the issues raised.

We are itching to get started with this after having had so many Covid delays so please help us by completing the short survey either via the QR Code or the paper copy (which is available from the Tuatapere Four Square).

And for those of you who are confused by 22022022 ... the 22nd of February 2022 reads the same backwards and upside down. Apparently! 😊

WE ARE LOOKING FOR LOCAL CONTRIBUTORS!

Are you interested in being a regular or semi-regular contributor of content for the Western Wanderer?

We're looking for people who would like to provide a short article/piece of reading for each monthly issue.

(It doesn't have to be every month - we can be flexible!)

Get in touch with us at
yourwesternwanderer@gmail.com

or drop a note in the mailbox at
18 Orawia Rd, Tuatapere.

COACHES + MANAGERS NEEDED!

Waiau Star Rugby Club Senior Team are looking for expressions of interest from Coaches and/or Managers for the 2022 season. We have a young, enthusiastic team, showing good signs with both development and dedication.

If you are interested, please contact:

Blayne 027 631 7273 or Pete 027 520 2753



TUATAPERE AMBULANCE

Did YOU Know?

The Tuatapere Ambulance is a funded service by the Tuatapere Lions Club, for the residents of Tuatapere & Districts.

Should you receive an account for this service from St John, please forward it immediately to:

The Treasurer

Tuatapere Lions Club

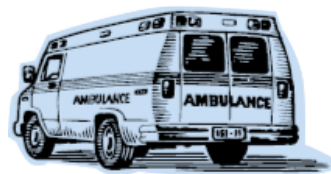
PO Box 47

Tuatapere

Sometimes we experience difficulty in receiving the invoices for YOUR trip - so PLEASE do forward them on to us.

Thank you!

**Tuatapere Lions Club Charitable Trust
Ambulance Committee**



WESTERN SOUTHLAND HEALTH SHUTTLE

The Western Southland Health Shuttle Service travels from Otautau, Ohai, Nightcaps, Tuatapere, Riverton - covering all of Western Southland. We also connect with the Invercargill-Dunedin shuttle.

The Western Southland Health Shuttle operates Monday - Friday (excluding Public Holidays).

Bookings are required by 3pm the day prior to transport.

Ph: 0800 103 046 to book.

Please book as soon as you receive your appointment.

TUATAPERE VOLUNTEER FIRE BRIGADE

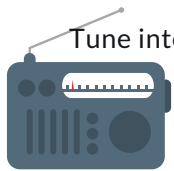
We're on the lookout for members to join this rewarding organization. We are looking for persons who are, ideally, available throughout the day.

If you think that you would like to try this (sometimes lifelong) commitment, then please feel free to come and try it!

We train on Tuesday nights at 7:30pm during daylight saving and 7pm through the winter months.

We look forward to meeting with you.





Tune into Tuatapere's very own Radio Station

88.2 FM - Tui FM!

Hits of the 80's & 90's and
today's current music!

COMMUNITY NOTICEBOARD

TUATAPERE AMENITIES TRUST

Application Forms for the 2022 year funding will be available from February 1, 2022 at the Tuatapere Service Station, Chambers Repair Services and Tuatapere Outdoors & Hardware

Completed Application Forms need to be submitted by 30 April, 2022.

The Trust wish to remind applicants that applications for wages, administration and operative costs or retrospective funding will not be granted.

WAI AU SQUASH 2022

Our season is fast approaching!

We hope to have two women's teams and two men's teams in the local Western Southland competition.

We are always looking for new members so please contacted Rebecca or Sam if you are interested.

Squash is a great way to keep fit over the winter, and socialise with some like-minded people!

Family/social keys are also available.

Contact: Sam Egerton **027 250 5477**

Rebecca Robertson **027 424 6129**



SALVATION ARMY FAMILY STORE TRUCK

The Salvation Army Family Store Truck will come out and collect large amounts of your pre-loved furniture & other household items. This service is free. Please call the store to organise your visit on **03 214 5380**



Family Store

Donate. Buy. Help.

familystore.org.nz



TUATAPERE HEALTH & GIFT SHOP - Riverton Pharmacy

SHOP HOURS

Opening time: 12.00pm.

1st prescription drop from 12.30pm daily.

If we can help in any other way, please contact Riverton Pharmacy **(03) 234 8515**



COUNTRY CORNER CRAFTS

Come in and browse and see what we have to offer. Hats, scarves, children's knitwear, cards, jewellery, woodware, sewing, jams, pickles, sauces, etc.

Tuatapere souvenirs "On Natures Edge" logo are always available.

Is anyone interested in joining to sell their crafts? You are more than welcome to contact us.

Want to volunteer your time & work in the Craft Centre - let us know! It's a great way to meet people! If you wish to view the shop and it is closed, please ring the ladies below to open it for you.

Louise Greber (03) 668 6001 or
Lyla Sherriff (03) 226 6187

INDOOR BOWLS

The Indoor Bowls season is starting in April and the Wai au Indoor Bowling club is desperately needing players to avoid closing down.

We have practice nights on Mondays 7.30pm with competition games Thursdays 7.30pm

Young players are welcome to join with training /coaching provided.

If you'd like to join or know any who is please email jessejculbertson@icloud.com

SENIOR CITIZENS

Senior Citizens is a group of over 60s that meet every **Friday afternoon at 1pm** at the rooms behind the RSA Hall.

We are always looking for new members so if you would like a fun afternoon playing bowls, cards or just catching up with friends, come and join the group. Contact: Olive Bennett Ph **(03) 2266 477**

POP UP SHOP

Quality second hand goods

New Opening hours

Friday 2pm to 4pm and Saturday 10am to 2pm.

Tuatapere Presbyterian Church Hall, Main Road, Tuatapere. Stay a while and enjoy a cup of tea or coffee and something to eat. **Everyone welcome.**

**Something for everyone – young and old.
Come on in and see the new layout.**

**Donations of items always gratefully received.
Contact Carol Diack 021 110 1835**

MARKET DAY

Stalls of craft and other goods
Held in conjunction with the POP UP SHOP

Every 3rd Saturday of the month from 10am to 2pm
Tuatapere Presbyterian Church Hall, Main Road, Tuatapere. Stay a while and enjoy a cup of tea or coffee and something to eat. **Everyone welcome.**

To book a table or any queries please phone or text
Carol Diack 021 110 1835

TUATAPERE ENVELOPES

Envelopes printed with the
“Tuatapere on Natures Edge” Logo can be
purchased at Country Corner Craft Shop
1A Orawia Road Cost \$3.00 per 10



**Get your car washed, dried and windows cleaned
Price arranged on request!**

Contact: Rex Hibbs Flat 1/26 Orawia Rd, Tuatapere

ADDRESS NUMBER PLAQUES

Address number plaques can now be
ordered through the Tuatapere Community Worker
Support Trust. These can be clearly seen anywhere day
or night. The number plaques are for properties. Each
number must be specific and correct for this purpose.
To order please call Keri Potter 027 757 5983



NEED A JP?



The following Justices
are available
by appointment:

Tuatapere

Keri Potter 027 526 3137
Donald Egerton 027 432 5407

Te Waewae Bay

Shirley Whyte 027 504 5220

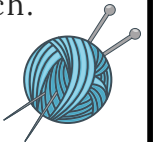
Blackmount

Nicky Baker 0276435880

WESTERN SOUTHLAND WOOLCRAFT GROUP



Spinning, Felt, Weaving, Knitting,
Crochet. Other crafts welcome!
1st & 3rd Wednesday of the month.
10am - 3pm. \$3. BYO Lunch.
Scout Den, Erskine Street.
For details please contact:
Helen Todd 022 103 9327



TUATAPERE & DISTRICTS LIONS CLUB PROJECT



SUPER DIRT

Super dirt bags are now
weighed so more in each bag!
\$8 per bag - ready for your garden!

Super dirt can be collected from:
Cracks Yard, Grove Burn Road,
in the mornings Monday to Friday.
Weekends by arrangement.

Delivery by arrangement - (but not
guaranteed)

Phone Trevor (03) 225 5864 or
Stephen (03) 226 6817



TUATAPERE COMMUNITY WORKER

Room 5 Medical Centre
69A Orawia Road

Monday - Thursday 10am to 3pm

Keri Potter 027 757 5983

Email: tcworker@xtra.co.nz



COMMUNITY NOTICEBOARD

WORLD DAY OF PRAYER

Friday 4th March 2022 at 10am

Join us for a Coffee Morning and Meet for Prayer at Tuatapere Presbyterian Church.

All denominations welcome to this wonderful moment in time.

Never before has this generation needed prayer as they do today.

Please come along and meet people of like mind.



WAI AU VALLEY PRESBYTERIAN CHURCH

Services for all ages! Every Sunday at 10.30am.

Tuatapere Presbyterian Church, Main Street, Tuatapere.

All welcome to join us.

TUATAPERE PLAYGROUP

23B Orawia Road. Friday Playgroup 9am - 12pm

Children's morning tea is a packed lunchbox from home at Playgroup (as opposed to a shared morning tea).

Any queries please contact:

Gemma Bennett 022 040 3368 Alice Harris 027 270 0363

CLIFDEN PLAYGROUP

45 Otahu Eastern B...
Every Wedn... am - 12:30pm.

Bring... your child's morning tea.

Any qu... Sarah 027 699 5234

Due to low attendance & increasing covid case numbers in Southland Clifden Playgroup has been postponed for the rest of the term.

LOCAL COMMUNITY GROUPS / SPORTING CODES ETC

It's free to advertise your local group, sporting team/code in the Western Wanderer.

Just drop us a note to: yourwesternwanderer@gmail.com by the 20th of the month prior and we'll add your notice to the Community Noticeboard for the next issue!

WAI AU MEMORIAL LIBRARY

Library Hours: Fridays

10:00am - 11:30am

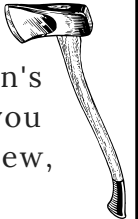
2:30pm - 4:00pm

7:00pm - 8:00pm



Observing our normal hours under Red however we will be limiting the number of people that can be in the library at the same time.

TUATAPERE BUSHMAN'S MUSEUM



Orawia Road. If the Bushman's Museum is not open when you have visitors who wish to view, you can contact:

Lindsay Faulkner (03) 226 6650 to arrange a suitable time.

TUATAPERE & DISTRICTS PROMOTIONS INC



We are always interested in hearing new ideas and seeing new faces. Everybody is welcome!

We meet at the Waiau Town & Country Club, 3rd Wednesday of the month at 7:30pm! (7pm winter months)

Contact Paula: 027 4346 777

Our Next Meeting:
Wednesday 16 March 2022

SOUTHLAND COMMUNITY LAW CENTRE

Free legal information and advice for the community of Southland.

2nd Floor, Cue Building, 33 Don Street, Invercargill.

Phone (03) 214 3180

Freephone: 0800 550 800 (outside Invercargill city only)



ESSENTIAL OILS 100% PURE GIFTS OF NATURE
Florals Trees Plants Herbs Spices Citrus

To Learn More, phone or text your local Wellness Advocate
Carol Erskine Papatotara 0274 599 654



The Great Tuatapere Rubber Duck Races

Nathalie Pahl, Chairperson, Tuatapere Toy Library

IN & AROUND THE COMMUNITY

As the forecast wasn't looking too flash many were worried for the duck races. On the day we decided to postpone the event for 2 hours, you may have heard this announcement as it was called out through a microphone in every street of Tuatapere. We kicked off Race 1 at 1pm and before we knew it the sunshine joined in, bets were placed and ducks were racing race after race. Cheer and laughter filled the air mixed with the smell of a hot sausage sizzle provided by Basecamp. Another fun and successful edition of The Great Tuatapere Rubber Duck Races. This year's Grand Finale, the Bridge to Bridge Chase, was very exciting as Eweno, last year's winner, had placed himself in the final once again! But he did not manage to keep up with Duck That, the winner of The Great Tuatapere Rubber Duck Race Cup 2022 sponsored by Harry's Machines - Congratulations!



The Tuatapere Toy Library would like to thank the volunteers who made this day possible, Cameron, Chrissy, Paula, Lynley, Jane, Gail, Mike and Peter - we could not have done this without you. We are very, very grateful! We raised a grant total of \$2529.50 for The Tuatapere Toy Library!

On that note I would like to point out that the Duck Races is not just a fundraiser, it is a community event! A lot of time and effort is put in to organise this event for the community, your support is much appreciated and we hope to see you again next year!



The Tuatapere Toy library is in a really good place at the moment. We have our new home paid for thanks to Sid Slee Charitable Trust, The Tuatapere Te Waewae Community Partnership Fund and Community Trust South. It is in place thanks to a Lottery Grant we received. The Clifden Rural Woman kindly helped us out with the sign which has our new logo on it. And we have just taken over a bunch of toys from The Otautau Toy Library which unfortunately has shut its doors. We have also ordered a whole lot of awesome new toys from the John Deere shop, due to arrive this week. The Amenities Trust has been very helpful and generous in helping us out with these purchases. The Duck Races have upped our funds and we are in a very healthy place, with little to no costs left to keep the toy library running far into the future.

We hope to see you all at the 2023 races - so bring your neighbours, friends and whanau!

TUATAPERE TOY LIBRARY

Tuatapere Toy Library has been a toy swap/hire service provided to the young families of Tuatapere and surrounding districts since 1989.

The purpose is to create opportunities for the little people of our community to have accessibility to toys. A small contribution of an annual membership allows families to join the group and have access to the toys.

For more information or questions please text or ring Nathalie Pahl on 027 4759 075



Tuatapere Freight

LOCALLY OWNED & OPERATED

RUNS MONDAY TO FRIDAY
WEEKENDS BY ARRANGEMENT

Phone Brandon
027 436 4360



Shearing magazine

Des Williams (editor)

Tel 07 839 2891 : Mob 0274 833 465

Email : shearingmag@xtra.co.nz

Member NZ Guild of Agricultural Journalists and Communicators (Inc)

LAST SIDE PUBLISHING LTD
PO Box 102, Hamilton 3240, New Zealand

RAW FARM HOMEKILL

Wayne & Rachel Saunders
Qualified Butcher

027 457 6350

rawfarming@yahoo.co.nz

82 Clifden Highway
Tuatapere



Cut up the way you want

Beef

Pork

Sheep

Venison

Other game meats

Traditional Smallgoods

IN & AROUND THE COMMUNITY

Life and Times of Doctor Elder to be Officially Recorded

Media Release: 20th February 2022

Last October, a 10 person strong steering group of current and former Western Southlanders was formed to plan for the printing and formal recording of the life and times of former Tuatapere based GP, Doctor Eric Elder.

The group has got down to work, obtaining the permission of Doctor Elder's family to collate the material, write the story, and then appointing prominent Southland Author Lloyd Esler to write the planned book.

It has also been resolved to work closely with the Southland Oral History project to record orally, by way of interviews, as much of the Dr Elder story as is possible.

For a number of years now, since the passing of Doctor Elder, many within the wider Western Southland District and community of Tuatapere have often talked about the importance of recording the memories of Doctor Elder's unique 50 years of service provided to the district and for it to be officially documented.

Further, given the passing of time, as many have recounted, if such a project were to proceed, time itself is now of the essence, should the district hope to benefit from the many first-hand accounts, experiences and interaction that occurred with Doctor Elder. These accounts, which are often referred to fondly, still circulate among many local residents and are truly considered worthy of recording for future generations.

It is considered therefore that the preparation of such an account should be completed before people of the area, many of whom were former patients, pass on and stories possibly lost forever.

The story of Doctor Elder covers a pioneering time period in the history of New Zealand and Western Southland in particular, when life was hard but rich, and the stories that past patients and people of Western Southland recall about Doctor Elder, can only be described as legendary.

Many stories are well known. Collectively they represent everything that was good about humankind and the Western Southland community during that period.

By any international standards of a rural medical practice, Doctor Elder was the consummate Rural GP.

He was held in the highest regard, widely recognised for his service and skills, and interacted with his patients and the community at a level which many rural practitioners attempting to follow in his footsteps today, would struggle to replicate.

Chairman Edwin Lewis says "The group is allowing a maximum of two years for the project to be completed as there are people literally spread far and wide who we need to talk to". Proceeds from the sale of the book will go towards the Doctor Elder Bursary Trust.

The steering group is now moving to invite public contributions to the project by inviting submissions, old photos and stories. This can be done by;

Email to: jo@tuataperemedical.co.nz

Subject: Doctor Elder Book Project

OR

Delivery of hard copies, photos and other material to:

Tuatapere Medical Centre,
69a Orawia Road, Tuatapere.

If centre is unattended please call Jo on **027 295 0429**.

Please direct any enquiries to any member of the Project Steering Group or contact:

Chairman Edwin Lewis - **027 596 3912**

Email: ejlewis@xtra.co.nz

Project Steering Group



From left to right:

Seated: Imelda Faulkner, Ngarita Dixon, Helen McKay, Edwin Lewis (Chairman), Isobel Fraser.

Standing: Peter Templeton, Nicol Horrell, Lindsay Faulkner, Pat Smith, Les Johnston, John Fraser. 9

WESTERN ELECTRICAL

2008 LTD

Electrical Solutions

Domestic | Industrial | Commercial

Quality Service at Competitive Prices

- New Builds, Rewiring & Alterations
- Dairy Shed, Farm & Industrial Maintenance
- Hotwater Element Replacement
- A/H Call Out Service Provided



Ph 03 225 8974 / 027 439 3787

Fax 03 225 8973

MOUNTAINS EDGE CABINS MONOWAI



Hunting, Fishing, Mountain Biking,
Kayaking & Tramping
Cabin Accommodation

12 Cabins
Double and Single Available
\$35.00 per person per night

Eftpos available

Full Kitchen Facilities, Showers, Toilets, Playground
& the Tennis Courts right across the road!

We are 'pet friendly'

www.mountainsedgecabins.com

Email: mountainsedgecabins@gmail.com

75 Turbine Drive, Monowai. Ph. 03 225 8267

WaterForce

Irrigation Systems
Pumping & Filtration
Effluent Dispersal
Water Management

20 Winton Hedgehope Highway, Winton

03 236 9805 www.waterforce.co.nz

0800 4 FORCE (4 36723)



MR STEEL

TUATAPERE

PH: 027 276 6816

MALCOLM

**For all your engineering,
steel fabrication and repair needs!**

Lynley McKerrow

Celebrant
Funeral and Marriage

P: 0272 974 767

E: nanamac60@xtra.co.nz

with care - with love - with dignity



C: 0274 247 102

T: 03 225 8652

E: admin@drakeplumbing.co.nz

KIERAN DRAKE

Certifying Plumber
& Drainlayer

FORDE SHEARING LIMITED

Available for all new and existing clients

For all your shearing and
crutching requirements

Please phone Darin or Julie Forde

(03) 235 8853
027 229 7760



**BEN MCMASTER
BUILDING**

Ph: 027 202 7955
benmcmaster@live.com

- Licensed Building Practitioner
- Sheds, renovations & new homes
- Based in Western Southland

You dream it, we'll build it

Want to know more about the Hump Ridge Great Walk Project?

Project Webpage: Get all the facts and
stay informed via

www.doc.govt.nz/hump-ridge-great-walk-project

Project Email: Contact the project team
at any time to ask questions or to be
added to the distribution list to receive
these newsletters:

HumpRidgeGWP@doc.govt.nz

Media Enquiries: please direct to
media@doc.govt.nz

Want your local photograph to be featured on a postcard?



Send your photographs to
yourwesternwanderer@gmail.com

PAUL ANDERSON BUILDER

AVAILABLE FOR ALL YOUR
BUILDING REQUIREMENTS.

NO JOB TOO SMALL.

COMPETITIVE RATES.

REFERENCES AVAILABLE!



Mobile: 027 890 3602

thetakis@outlook.com

Rubbish Challenge - Recycle

Karina Gerzabek

Last month my sister and I did a rubbish Challenge. where we collected as much rubbish as possible within an hour. Throughout February we thought about how we could reuse the rubbish that we produce instead of throwing it away. We have come up with some things on how we can recycle. My sister and I realised that you can make anything out of Rubbish! From our household waste I found a lot of fun things to make, for example baskets, bags, even string using leftover paper or plastic from food packaging.

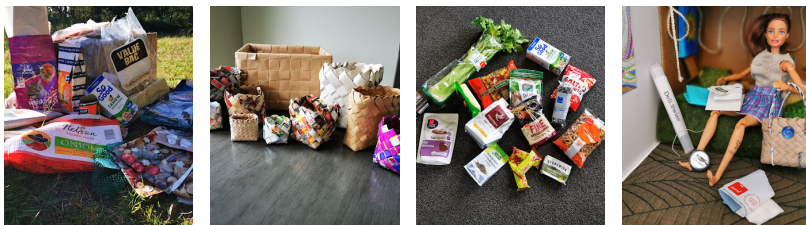
We know that some of what we reuse/recycle will end up in landfill. We came to the conclusion that it is best not to produce rubbish in the first place. Or, at least as little as possible because all of our resources are limited. When the resources are gone, they are gone for good.

This month, of course, we went looking for rubbish again. We decided to work as a team and filled two small rubbish bags and one large bag. Most of what we found were glass bottles.

We always want to do the challenge now as soon as we leave the house. Because every time we go out and about we find rubbish without looking for it. It would be wrong not to collect the garbage. That's why we always carry a rubbish bag when we go out for a walk.

Here are some ideas we came up with to recycle used items and rubbish: String, jewellery, baskets, poncho, shoes, clothing, mobile phone case, pot coasters, potholder, funnel, plant pots, we have even been thinking of making furniture, party decorations, a small camp stove, kite, toys for humans and animals, washing-up sponges and cleaning cloths, handicraft tool, wrapping paper, sculptures. You can make some amazing things if you are willing to give it a go.

As we agreed in our first garbage challenge, the winner gets a surprise gift. That's my sister's gain. From our rubbish challenge, I made her a bag for her Barbie doll. Her Barbie recycles too! I wonder if you can find any recycling possibilities?



PLEASE HAVE YOUR ARTICLES, NOTICES, OR
UPDATED ADVERTS FOR THE
WESTERN WANDERER

SENT IN
BY **20th of March**
(for the April Issue)

SEND TO:

yourwesternwanderer@gmail.com

OR DROP A NOTE IN THE MAILBOX AT
18 Orawia Road, Tuatapere

TUATAPERE HANDYMAN SERVICES

Barry Bennett
(03) 226 6730

- **Painting - Interior/Exterior**
- **Waterblasting**
- **Spider & Fly Spraying**
- **General Repair Work**
- **Lawnmowing**
- **Weed Spraying**



SOUTHLIFE
Community
CHURCH

Steve & Sharon
are Pastors

and we are an area church



We believe in
Community and
endeavour to
show this the
best we can by
the way we
care and serve!



We warmly
invite you to
come along to
one of our
services.
It would be great
to see you

Sunday Service
10am Truro St, Orepuki

Waiau Town & Country Club

**Meals (homemade goodness)
available Thurs, Fri, Sat & Sun
from 4pm to 9pm.**

Family Friendly | Happy to cater for dietary requirements.
Please pre-book for groups of 8 or more.

Club Opening Hours:

Mon - Thurs 4pm till close.

Fri 3pm - close.

Sat Noon - close.

Sun 3pm - close.

Book now for functions/birthdays etc

We can cater! Call to discuss options.

03 22 66 489

What's on at the Club:

***FIREWOOD WORKING BEE**

Sunday 13 March, 10am - BBQ to follow.

***POTATO IN THE BUCKET - JUDGING TIME!**

Saturday 19 March, 2pm. Make sure your name is on your bucket! Donations for Chocolate Wheel greatly appreciated!

***BINGO - Sunday 27 March, 2pm**

Donations for the Raffle Table much appreciated!

***STEAK NIGHT - every Thursday night only \$25 for a delicious steak meal.**

*** MEMBERS DRAW & RAFFLES**

drawn every Friday night! Approx. 7.30-8.30pm.
Come in for a bite to eat and a drink, who knows you might be the lucky one to win \$\$_!

**Keep an eye on our Facebook Page for
more details on upcoming events**

Annual Membership/Subs

*Everyone welcome to become a member,
just pop in or call the club.*

Annual membership is \$50 or \$30 for pensioners.

*Pay & collect at the club or pay online
and we'll post your card out.*

Phone: **03 22 66 489** | Address: 41 King St Tuatapere

Email: waiautcc@gmail.com | Facebook: [facebook.com/waiautcc](https://www.facebook.com/waiautcc)

| Courtesy Van Available |

We look forward to seeing you!



WAIAU AREA SCHOOL

Year 1-13 Education

Live to LEARN, LEARN to Live

Kia ora Western Wanderer Readers!

Our WAS tamariki and rangitahi have settled into the school year with ease. Our students have appreciated getting back into school routines and have adapted exceptionally well. It's a real positive sign when our new enrolments and new staff blend in with ease too. I'm also very aware that wearing masks and trying to physically distance continues to be challenging for us all. In saying that, the students are recognising the importance of maximising their learning as we cannot take for granted schools being open during these testing times.



2021 WAS NCEA results were very pleasing. 82% of students gained an NCEA level. Five Year 13 students gained the University Entrance Qualification. We also had a large number of students attempt external exams with a 90% pass rate. We had several students gain internal and external Merit and Excellence achievement standards too. Also, we had a small number of students gain credits through Gateway and SIT/Telford opportunities. A massive thank you to all our staff for providing extra support and coaching throughout the year, especially through Covid. We are very proud of our senior students.



Josh Thomas and Tekoa Mangion (pictured) both received Meridian Energy scholarships (\$1500 each) to assist them with their tertiary studies. Our partnership with Meridian continues to grow and we thank Mel and team very much for their ongoing support towards WAS.

Our school lunches have been an absolute hit this year. As you know, WAS is now providing lunches onsite. Roberta, Jo and Paula have been working hard to ensure our students are well fed and it's been amazing the freshness and the way everyone has embraced sitting down eating their kai.



WAS' Western Wanderers snippets from now on will be presented differently. Teachers will be celebrating and sharing the learning aspects from their respective classrooms. Over the years, we have been keeping you informed with the many successful developments and/or improvements WAS has achieved. Now it's time to hear from the staff and students.

Thank you again for all your support towards WAS and our students.

Nga mihi, take care and keep safe. Andrew PB

Alex Reid CONTRACTING

**Paddock Cultivation from
Ploughing to Sowing
Dry Hire available
Aerating
Direct Drilling
Ridging
Mulching**



Dairy Lane Maintenance

Tip Trailers • Vibrating Roller • 2 Tip Trucks

Sheep Conveyor

Drenching, Vaccination etc • 3 way draft

Large Skid Steer for calf shed cleaning, loading Muck Spreaders etc

4 Muck Spreaders • 16,000 litre Slurry Tanker
Pond Stirrer • Umbilical Slurry System



**PHONE ALEX
0212775308 CELL
03 2255377 HOME**

Apply now for Meridian's Power Up Community Fund

At Meridian, we only generate from 100% renewable resources: wind, water and sun. We're committed to doing good things with our energy. That means good for people, and good for the environment.

We're proud to back local projects in the communities around our wind farms and hydro stations with our Power Up fund.

With Power Up, your community has a say on what initiatives we support and fund. Managed by a panel of locals and Meridian staff, we're working together to build strong, sustainable communities.

Power Up Manapōuri provides grants for projects in Te Anau, Manapōuri, Clifden and Tuatapere.

How to apply

Applications for the next funding round are open until midnight on 24 April 2022.

For more information and to apply:

- visit meridian.co.nz/powerup
- email community.fund@meridianenergy.co.nz
- call 03 357 9732



WAI AU HEALTH TRUST – March 2022

Medical Centre

Practising under the Red Traffic Light system: Phase Three

With Omicron rapidly increasing in the Southern DHB you will find things somewhat different when having an appointment with the Medical Centre. As we prepare for an increase in Covid numbers in our community we have made further changes. Currently we are doing as many appointments as possible via a telephone consult where it is practicable. We are operating with a locked door policy for the safety of our patients and our staff. You will also notice all our clinical staff are fully kitted in Personal Protection equipment (PPE). This is to give as much protection as we possibly can to everyone. I appreciate your understanding regarding the measures we have put in place during this time. It is extremely important for us all to do our best to protect our medical centre team. If any of this team become unwell it greatly reduces the level of care, we can deliver to you all. Please, as always, call our centre for any questions or concerns around your health and wellbeing.

COVID Booster vaccinations are now available for you at our clinic

if it has been four months since you received your first and second dose. We are encouraging everyone aged 18 and over who have been fully vaccinated for at least 3 months to get a free booster now. Speeding up the booster rollout is one of several ways we are protecting Aotearoa New Zealand from the Omicron variant of COVID-19. While a 2-dose course provides some protection against severe disease from the Omicron variant, a booster is proven overseas to offer greater protection by reducing the chance of more serious infection and the risk of transmitting it to others. At this stage, there is no data available on how long you are protected against infection and disease following a booster dose. Health officials will continue to review information as it becomes available.

We are now providing vaccines to those aged 5-11. The Pfizer vaccine is highly effective. If children and young adults who have been vaccinated do develop COVID-19, they are far less likely to fall seriously ill and less likely to transmit the virus to others.

Appointments for COVID Vaccines are bookable at bookmyvaccine.nz or you can phone **0800 28 29 26**. If you have any queries, as always, don't hesitate to phone us on **03 226 6123**

Jo Sanford, Manager

Cell: 027 295 0429



Waiau Health Trust
69a Orawia Road, Tuatapere
Approved Registered ACC Provider
Monday to Friday
9:00am – 4:30pm
Ph.: 2266123

Practitioner Hours
Amanda McCracken (NP) – every
weekday

Sheryl Eden (NP –every Monday &
Tuesday)

Physiotherapist
Tuesdays & Thursdays
Phone for an appointment

Podiatrist
Visits regularly –
Phone for an appointment

Warts/Minor Skin Lesions
Liquid Nitrogen treatment available
Phone for an appointment

Homebased Maternity Care
We are offering this service
in the patient's home.
Please contact Jo Sanford
on 2266123 for enquiries.

Day Activities Programme for
the Elderly
Every Tuesday & Wednesday
Please phone for further information.

District Nursing
Available as required by referral

RAILWAY STATION PROPOSAL

The Railway Station is an important feature of our town, it has had many mentions in the Western Wanderer.

Following the District Council survey, the Tuatapere & Districts Promotions Group has been in consultation with the Southland District Council and the Community Board to provide a concept plan for the Railway Station.

As you can imagine, this is a project that requires careful consideration and planning, and over the last 12 months (which included significant Covid delays), The Tuatapere & District Promotions group have formulated and invested in concept planning that we are pleased to be able to share with the community.

We have been lucky enough to engage an award-winning Landscape Architecture firm out of Queenstown - Baxter Design Group, who have partnered with Tuatapere & District Promotions Group to provide some initial concept plans.

Baxter Design Group have received awards for the Queenstown Village Green, Millbrook Resort and a National Award for Blanket Bay Lodge. As well as providing landscape development at Lake Hayes Estate and Arrowtown, Baxters also won an NZILA Award of Excellence for the Remarkables Primary School.

The concept design covers the exterior of the building itself, the "WOW" factor that encourages visitors on the Southern Scenic Route to stop and explore our town and provides information on the hidden gems and history in our local community. It is our intention to maintain the building with essential repairs and a new paint job.

Tuatapere & District Promotions Group will present these concept plans as well as community feedback to The Southland District Council and the Community Board and await their decision regarding whether we would be successful in gaining ownership of this important town building and moving forward with fundraising for this development and restoration.



Before we present, we want your feedback. Scan the QR code or fill out a hard copy at the Tuatapere 4 Square



Raised steel planter provides for three large (2.2m²) panels, detailing a map of the wider area and includes historical information.

Plantings: Native flaxes and tussocks, Manatu (Ribbonwood) provide strong vertical elements. Mountain Beech adjacent to the State Highway delineate the site boundary and provides shelter over the carpark.

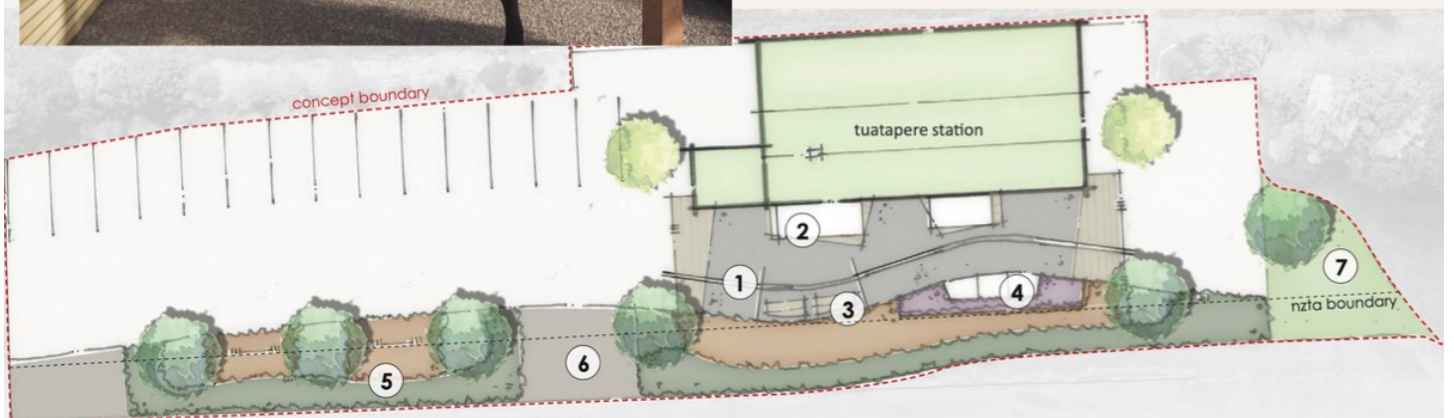


Elevated rail dividing the site - Rails are supported by timber trusses, a nod to historic rail bridges.

Two steel shelters allow visitors to stop and read information panels. The station is a backdrop - shelters provide protection to windows.



Sheltered seating area - The timber palisade structure shows the duality of the history of the area, both as a timber yard of the original railway and reflective of traditional Maori design - wall mounted interpretation boards.





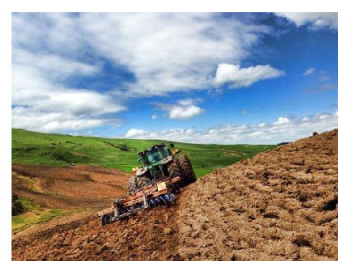
Rabco Ag Ltd – 021 362 766 – admin@rabco.nz
Agricultural Contracting Specialists - Western Southland



**Full silage
& baling
service**



Cultivation – including Direct Drill & Precision Drill



Effluent – Excavators - Hedgetrimming





George Harpur, SDC Councillor, Waiau Aparima Ward

Hi and welcome to my early autumn report. What a wonderful spell of late summer sunshine we have had with a little rain and great growth in the garden for those that have been preparing for the covid onslaught that is on the way, so the experts say.

On the home front we had another great turnout for the annual duck race fundraiser for the Toy Library which was well organised and attended by many locals and featured the local town crier in full swing. Well done to all and keep up the great work as we need more events such as this to galvanise our community spirit and get people together and enjoy each other's company.

To those that are interested in helping your town move forward (and this includes our new residents) the local body elections are but a scant seven months away. We do need competition and new blood. In particular, those willing to research and challenge some of the decisions that we are faced with as some, I do not believe, are in the best interest of your locally elected Community Board or the community. Many small projects are well within the capability of local groups wishing to fund raise for the benefit of the region but alas they are supposedly not qualified.

A very good article in today's Stuff page from Mayor Gary Tong where he talks on the historic aspects of respect and I totally agree with his comments. However, within the region of our Tuatapere/Te Wae Wae Ward we appear to have mainly dodged the bullet. You will always have "we can do better" comments but as in the previous paragraph elections are imminent.

Well folks, summer is fast leaving us and the winter sports codes are gearing up. Come along and support them as it all helps to promote our town, our immaculately maintained Domain and the organisational skills of our local people.

Aroha to all.

* 13 Tonne Digger * 5.5 Tonne Digger * 2.7 Tonne Digger- dry hire or operated
* Tip Truck * Bob Cat * Augers * Post Driver * Tree Saw & Hedge Trimmer

* Tree Trimming * Post Driving * Fencing * Cleaning of Wintering Sheds * Site Clearance * Cartage * Graveling * Lane Maintenance * General Earthworks

For all enquiries and bookings please contact Lance or Alice Harris
Lance: 027 304 3714
Alice: 027 270 0363
Email: lanceharris533@gmail.com
Check us out on facebook- Harry's Machines

CHAINSAW SHARPENING

All chainsaw chain sizes precisely sharpened and rakers taken down accordingly, guaranteed results

Chain only \$10 Taken Off & Refitted \$13

Please phone **027 308 2501**

WANTED TO BUY

Possum Fur, Hard deer,
Antler, Deer Velvet.

Phone Leith 027 496 3721

WAIAU VALLEY SHEARING LTD



**Simon de Vries
Julie Heaps**

**027 840 9867
03 226 6212**

Shirley Whyte
Your local realstate specialist living & working in Western Southland
now also an Accredited Justice of the Peace.



for:
Friendly service, reliability, sound local knowledge
in Western Southland, Te Anau & Stewart Island
All enquires welcome - all calls answered



Harcourts
Harcourts Real Estate Ltd Licensed Agent REAA 2008

M 027 504 52200 O 03 214 4080
E shirley@harcourtsinv.co.nz
W www.harcourts.co.nz

Hauroko VALLEY PRIMARY SCHOOL

Kia ora, Bula Bula, Nihao Western Wanderer Readers



Rural Lifestyle Residential
For all your Shearing Services.



**No mob too big
No mob too small
We do it all!**

**Contact Ricky Skipper to book in now
027 351 2620**

Specialising in
Dairy Conversions
Rural Fencing
Post & Rail



**H Gill Fencing,
Eastern Bush**
Phone 021 225 5489
After Hours 03 225 5488
Email hamish@hgillfencing.co.nz

FCANZ
Fencing Contractors Association NZ

accelerate
PHYSIOTHERAPY

office@acceleratephysio.co.nz
60 Deveron Street, Invercargill
(off street parking)
0800 291 475

Accelerate is a gentle form of exercise, effective in providing long term solutions
after an injury, especially low back pain.



We have interests in:

- > Spinal/Back & neck injuries
- > Sporting Injuries
- > Running, Cycling & Multisport
- > Men & Women's Pelvic Health
- > Acupuncture
- > Balance & Dizziness
- > Workplace Injuries / Ergonomic Onsite
- > Work Evaluations & Educations
- > Pilates

Joel Barnes
BPHYT, BExSci

Andrea Robertson
BPHYT, PG Cert ACUP

Andrea Murray
Dip PHYT Dip M.T.

Find us on facebook

www.acceleratephysio.co.nz



wellbeing whanau hauora wellbeing whanau hauora

It's 2022 - Welcome Back! We extend a warm welcome to Eve who joins HVP; we look forward to getting to know you and your family. Happy School Days and welcome to Riley who joins big brother Oscar. Kowhai class are lucky to have you both!

We also have a very talented team supporting our learners. Welcome Back - Karen, Dale, Nicole, Paula, Alice and Keri and a hearty welcome to Hauroko Valley - Christina, Lynelle and Melissa. It is awesome to have you onboard with a depth of experience and an enthusiasm to share your talents and strengths with our tamariki!

This year three teams from Hauroko Valley were able to compete in the Otago/Southland AgriKids Regional Finals at Waimumu. Well done to our team members - Maddi, Finley and Daniel & the team of Tomas, Sam and Ollie. Congratulations to "The Blazing Pitchforks" who were placed 2nd overall in Year 7&8 and have secured a trip to the Grand Final in Whangarei in July! Outstanding results - Ewan, Harry and Oliver!

The Year 1-3 students are spending Thursday afternoons in play based learning known as "Discovery Time". Hauroko Valley welcomes students within our school community to join us for these

sessions especially our 4 year olds. It is an ideal time to connect with their school friends and spend time getting to know our teachers and support staff.

Our Year 4-8 students are excited for the start of HVP Clubs. This Term we have squash - thanks to Nic & Kate and Tuatapere Squash Club, cricket - thanks Jason, rugby - thanks to Waiau Star, crossfit, basketball, beauty/baking and washi tape art.

Hauroko Valley students have spent time in the most amazing mobile classroom in NZ! The Life Education Bus where learning with Harold & Teresa is a fantastic experience! Classes spend a session on each of the two days engaging in learning about Human Biology - exploring our hauora/health and wellbeing. This links to our Year 7&8 learners engaging in St John's Programme - Whātuaia te Waiora/Weaving Wellbeing thanks to Educator Alan.

We look forward to catching up with you on our Term 1 learning journey.

See you next time!

Nga mihi nui,
Julia Waikato, Tumuaki/Principal

TEAM connections learners TEAM connections learners



Registered ELECTRICIAN

For all electrical work
No job to small
A/Hours service available

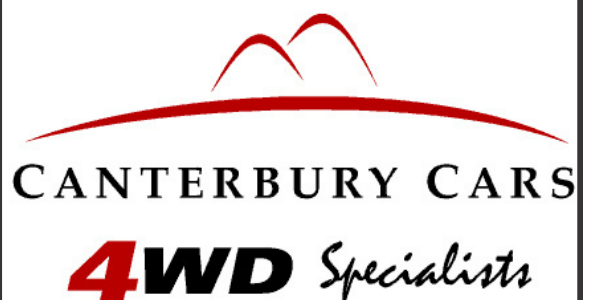
Jay Brownlee
8 Carlyle Street, Tuatapere 9620
A/H 03 226 6673
Mob 027 4965 863
sparkieintuatapere@gmail.com

For all your Accounting and Tax Solutions

Ask for Janice or Trevor England

 **03 2266110**

Aparima Accounting Ltd
57 Main Road Tuatapere



For all your vehicle requirements

Cars, utes, 4WDs, vans

Finance available

Contact: Murray Dowling
027 556 2655

Visit our website
www.canterburycars4x4.co.nz

Your Local Graphic Designer & Printing Specialist

McMAHON design studio

9 Cumnock Street, Wallacetown

P: 03 235 8967 M: 027 242 8109

f E: mcmahondesign@outlook.com



Wedding, Birthday, Anniversary, Fund-Raiser, Christmas Party, Awards Ceremony, Sporting Event, Reception, Celebration

*Planning
your next
special event?*

Big or small!

Let us make it easy with
an Events Package
custom designed
for you!

Included in every package is a
30 minute initial consult where
we will discuss your project, goals, theme and budget
to come up with a tailored graphic design and printing package
perfectly suited to you, and your event.

This could include:

- An emblem/logo for the event styled to your theme -
- An advertising pack for print and/or online to promote your event -
- Save the Date Cards & Invitations with custom printed envelopes -
- Tickets, Raffle Tickets/Boards, Entry Forms, Flyers, Posters, Banners -
- Seating Charts, Stickers/Seals, Gift Bags/Boxes, Cake Toppers -
- Name Tags, Table Cards, Guest Books, Photo Boards, Certificates -
- Thank You Cards and much more...

Place an order with us for your customised Events Package
before **THURSDAY 31ST MARCH 2022** and get **15% OFF**
the total value of your order

*Applicable only to orders totalling over \$200.00 excluding GST and delivery.

*We offer a wide range of digital printing
and graphic design solutions.*

- | | |
|---|--------------------------------------|
| LOGO/EMBLEM DESIGN including full branding packages | CALENDARS - BOOKLETS - REPORTS |
| ADVERTISING & SIGNAGE DESIGN | NEWSLETTERS - MAGAZINES - CATALOGUES |
| SOCIAL MEDIA GRAPHICS & EMAIL SIGNATURES | ALL OFFICE STATIONERY |
| PHOTO EDITING & CUSTOM ART | PERSONALISED STATIONERY & CARDS |
| CERTIFICATES - PRIZE CARDS - PROGRAMMES | PRESENTATION & PROMOTIONAL ITEMS |
| WEDDING & EVENT STATIONERY | AND MUCH MORE... |

Get in touch with us today for your free consultation and quote!

PROPERTIES WANTED!

Contemplating selling? You might
be surprised by what your property
could fetch on today's market

Contact Julie today for a free appraisal and
to discuss how you could take advantage of
this bouyant property market



Julie Guise

021 256 4164

julieguise@sre.co.nz

SOUTHLAND REAL ESTATE LTD
Licensed under The Real Estate Agents Act 2008

MREINZ

SOUTHLAND REAL ESTATE LTD

Licensed under The Real Estate Agents Act 2008

MREINZ

For all your fencing requirements

WESTERN FENCING

SHEEP | DAIRY | DEER

Call BEVAN 0277 413 213

ADS

ANDERSON DRAINAGE SERVICES

Keeping Southland Flowing

- ✓ Tile Cleaning
- ✓ Culvert Cleaning
- ✓ Septic Tank Blockages
- ✓ Domestic Blockages
- ✓ Rural Drain Blockages

📞 Fraser Anderson
📞 021 162 0210
✉️ fraseranderson1@gmail.com
📍 Forest Hill, Southland
📺 Follow us on Facebook

Call us today!

INDEPENDENT MIDWIFE

ISOBEL DEVERY

*Caring for women throughout
Pregnancy, Birth till six weeks
Post Natal.*

*Choices for place of birth,
Home or Winton Birthing Units
or Kew Hospital.*

*Free pregnancy tests
available on request.*

**Phone: (03) 22668822
027 2267020**

©Pecoraro, EthicGraphics®

Sewing and Mending Services Available

Experienced machinist offering fast, reliable service with very reasonable rates.

I will mend/make anything from zip replacements to curtain making - just ask!

Free quotes and pick-up delivery service within Tuatapere.



Contact **Deborah**

(03) 226 6783 or 021 0305 667



DAGWOOD DAGGING

Available now to all new and existing customers for all your crutching requirements.

3 Stand or Single trailer available
7 days a week, wet or dry.



No job too big or too small.

Competitive rates

Jeff Chambers

027 3042 241

Ryal Buah

TRANSPORT LTD

CONTACT US TODAY

Phone 03 221 7192

Fax 03 221 7194

- **Excavators for general farmwork**
- **Laser guided drainage**
- **Gorse mulching & land clearing**
- **Lane maintenance**
- **Conversions**
- **Effluent Ponds**
- **Demolition**
- **20 tonne bulldozer, roller, grader**
- **Drain ploughing & alkathene laying**



Ratty Says ...

Waiau Memorial Library

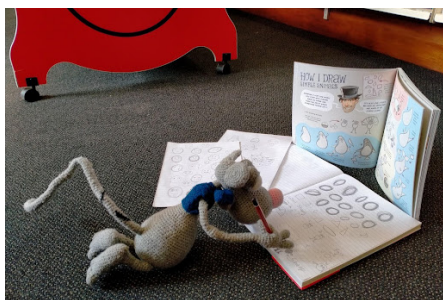


I have great news. My poppies are still alive and some of them even have flowers. There was a little bit of an Oops.



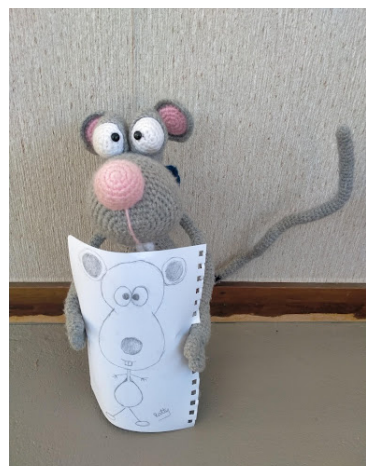
Some of the poppies started to look a bit brown and wilted. No one told me that if it doesn't rain you have to water the plants yourself. It was hard work trying not to hose myself, even harder to stay out of the puddles I made. I might have gotten a bit muddy. The word 'bath' was mentioned, several times. I pretended I couldn't hear.

Trying to not kill the poppies has kept me very busy but I did find time to start learning to draw.



I found this really cool book in the library. It's called "Draw Some Awesome" by Donovan Bixley. He writes and illustrates children's books. There are some of his books in the library. I really liked reading them.

"Draw Some Awesome" had lots of good ideas on how to draw. Did you know that drawings are just circles, squares, triangles and lots of other shapes? I didn't. I still haven't quite got the hang of it. I practised drawing lots of stickmen faces and I even had a go at drawing



monster faces. I think I need a LOT more practice. I started to feel a bit more confident so I decided to draw a self portrait.

Who wants a signed copy?

Tui Base Camp



Open from 7am every day!

Kitchen open until at least 8.30pm

Come in and check out our specials

We are on the hunt for 2-3 stars to join our team!

Front of House, Cooking, DM.

Skills/experience come second to enthusiasm, ability to work in a team, and positivity.

Roles/hours vary as we are a flexible employer, it's more about getting the right people for the team. If this sounds a bit like you please contact **James** to discuss on **027 837 3521** or email james@tuibasecamp.co.nz

Don't forget we now have a mini-van!

Contact us to organise a night out at Tui Base Camp (pick-up and drop-off).

Contact **James 027 837 3521** for enquiries.

For all of your dine in and takeaway requirements including:

In-house roasted Amore Coffee

In-house made pies, sausage rolls, cheese rolls

Range of breakfast options

Packed lunches

Catering

Phone: (03) 226 6250

www.tuibasecamp.co.nz



Tui Base Camp



Keep an eye on our Facebook Page for our latest updates!





MAGICAL MARCH MEGA DEALS

| | | | | | | | | |
|---|---|---|---|---|---|---|---|---|
| <p>\$13.99 EACH</p> <p>Jim Beam; CC 440ml 4.8% (inc zero); 355ml 7% all 4pk cans</p> | <p>\$21.99 EACH</p> <p>Smirnoff Ice Red (inc zero) 5% 250ml 12pk cans</p> | <p>\$22.99 EACH</p> <p>Cruiser 7% 12pk can range</p> | <p>Not Stocked</p> <p>Black Heart 5% 12pk bottles</p> | <p>Not Stocked</p> <p>ODD Company 10pk can range</p> | <p>Not Stocked</p> <p>JB Gold; CC Premium 7% 12pk cans</p> | <p>Not Stocked</p> <p>Scapegrace 10pk can range</p> | <p>\$26.99 EACH</p> <p>Long White 10pk bottle range</p> | |
| <p>Not Stocked</p> <p>Jack Daniel's Double Jack (inc no sugar) 330ml 10pk cans</p> | <p>\$31.99 EACH</p> <p>Tui Bourbon 7% 250ml 18pk cans</p> | <p>Not Stocked</p> <p>KGB 7% 250ml 18pk cans</p> | <p>Not Stocked</p> <p>Jack Daniels & Cola 4.8% 330ml 12pk bottles</p> | <p>\$35.99 EACH</p> <p>Jim Beam Canadian Club (inc Zero) 18pk 330ml cans</p> | <p>\$9.99 EACH</p> <p>Jacobs Creek (ex Sparkling range) Montana Classic ranges</p> | <p>\$11.99 EACH</p> <p>Wolf Blass Yellow Label range (ex PN)</p> | <p>Not Stocked</p> <p>Lake Chalice The Falcon range Da Luca Prosecco</p> | <p>Not Stocked</p> <p>Villa Maria Cellar Selection, Esk Valley (ex PN, Syrah, Grenache) ranges</p> |
| <p>\$16.99 EACH</p> <p>The Ned range (ex PN)</p> | <p>Not Stocked</p> <p>Pepperjack range</p> | <p>\$34.99 EACH</p> <p>Seagers (inc lime) Ivanov 1L</p> | <p>\$35.99 EACH</p> <p>Larios Original 1L JB Honey; Devils Cut; Black 700ml Midori</p> | <p>\$36.99 EACH</p> <p>Jameson Jameson Cold Brew Absolut; Beefeater flvrd ranges all 700ml</p> | <p>\$39.99 EACH</p> <p>Johnnie Walker Red 1Ltr</p> | <p>\$39.99 EACH</p> <p>Finlandia 1L Southern Comfort Famous Grouse all 1L FG Smoky Black 700ml</p> | <p>\$41.99 EACH</p> <p>Bacardi (inc Spiced) 1Ltrs</p> | |
| <p>\$42.99 EACH</p> <p>Jim Beam Canadian Club (inc spiced) 1Ltrs</p> | <p>Not Stocked</p> <p>Tanqueray 1L & flavoured 700ml (ex Royale) range</p> | <p>\$64.99 EACH</p> <p>Chivas Regal 12yr 1L The Glenlivet 12yr 700ml</p> | <p>\$72.99 EACH</p> <p>Jim Beam 1.75L</p> | <p>Not Stocked</p> <p>Kingfisher Strong 7.2% 500ml cans</p> | <p>Not Stocked</p> <p>BRB 6pk can range</p> | <p>Not Stocked</p> <p>Mac's 6pk can range (inc cider / stunt double)</p> | | |
| <p>\$21.99 EACH</p> <p>Haagen 15pk bottles</p> | <p>\$23.99 EACH</p> <p>Kingfisher Sol 12pk bottles</p> | <p>Not Stocked</p> <p>Orchard Thieves 12pk range</p> | <p>Not Stocked</p> <p>Asahi 12pk bottles</p> | <p>\$25.99 EACH</p> <p>Monteith's (classic & batch brewed) 12pk range</p> | <p>\$26.99 EACH</p> <p>Steinlager 15pk bottles</p> | | | |
| <p>\$25.99 EACH</p> <p>Lion Red; Waikato; Speights Summit 15pk bottles</p> | <p>\$29.99 EACH</p> <p>Heineken 15pk bottles</p> | <p>\$34.99 EACH</p> <p>Tui; Export Gold; Extra Low Carb; DB Draught 24pk bottles</p> | <p>Not Stocked</p> <p>Carlsberg 24pk bottles</p> | <p>\$39.99 EACH</p> <p>Export 33 24pk bottles</p> | | | | |



Promotion period between 1/3/2022 to 31/3/2022. While stocks last. Promotion only available at participating stores. Please contact your local store to confirm whether they are participating in the promotion and check the pricing in-store prior to purchase. Online pricing will vary.

100% **NEW ZEALAND** OWNED AND OPERATED
thirstyliquor.co.nz

FOLLOW US ON
SOCIAL MEDIA



ASK ABOUT
LOYALTY CARD
BENEFITS &
GIFT VOUCHERS



TUATAPERE OUTDOORS & HARDWARE

For all your

Gardening tools, lawn care, garden hoses, insect and disease sprays, potting and compost.

We have those building requirements for that weekend job with a good selection of silicone, nails, screws and bolts.

New fishing rods and reels, fishing lures, good selection of soft bait, fishing nets, flounder and eel nets.



Good selection of giftware.

Come in, check out what we have.

Contact:

Judy **027 225 8192**

Paul **027 890 3602**

Shop **(03) 226 6363**

Waiau Star Junior Rugby

The rugby season is just around the corner! We don't have a start date yet, but please keep an eye out in WAS and HVP school newsletters, and on our facebook page **@waiaustarjuniorrugby**.



We have hoodies, trackies, hats and red shorts available online this year (kids & adults sizes) - details on our facebook page.

As always we need coaches and managers, if you're keen to help out please contact Jeremy.

Waiau fielded great junior numbers last year, so let's keep the ball rolling - see you soon!

Jeremy Gray
Junior Co-ordinator
027 225 5212

Painting & Handyman Services

Experienced Painter

I can help with all sorts of odd jobs too!

Gardening
Lawn mowing
Tree & Hedge Trimming
General labouring



Phone **Luke Wikstrom 027 2773 925**



027 252 7933

- ☒ Renovations
- ☒ Extensions
- ☒ New Builds
- ☒ Sheds/Farm buildings
- ☒ Decks
- ☒ Pre-purchase house Inspections

Call us for any building requirements

Ph 027 252 7933 email: aaroncbltd@gmail.com



2021 Junior Rugby Awards

D-Grade

- Ant & Kim Sutherland Trophy Most Improved Player D-Grade: **Sara Bopari**
- Slee Family Fairplay D-Grade: **Angus Blair-Edie**
- Steven Crack Trophy Most Consistent Player D-Grade: **Liam McLennan**

C-Grade

- For Determination Donated By the Barrett Family: **Louie Egerton & Jack Hewitt**
- Baker Family Trophy Most Consistent Player C-Grade: **Carter McGregor & Fergal Legg**
- George & June Harper Trophy Most Improved Player C-Grade: **Cassie Egerton & Boe Gray**
- David & Pam McNay Fairplay Trophy C-Grade: **Connor Egerton & Flynn Cade**
- McDonalds Award Junior Personality: **Jonty Bennett & Daniel Horrell**

B-Grade

- Dwayne & Vicky Unahi Trophy Most Consistent Forward B-Grade: **Cormac Legg**
- Andrea Mulligan Trophy Most Consistent Back B-Grade: **George Greer**
- For Determination Donated by the Barrett Family: **Oliver Deans**
- Noell & Gillian Anderson Most Improved Player B-Grade: **Hugo Gray**

A-Grade

- Most Consistent Forward A Grade Donated by Sandy & Julie Sanderson: **Jake McDowell Kitto**
- Most Consistent Back A Grade Donated by Alister & Jo Sanford: **Lucas Templeton & Hunter Norman**
- Most Improved Player A Grade Donated by the Chartres and Lowe Families: **Nick Cade & Baxter Erskine**
- Conduct Trophy A Grade Awarded for excellence in Leadership, Appearance, Attitude, Manners & Overall Sportsmanship Donated by Alastair McCracken: **Jack Horrell**

Overall

- Mick Knowler Memorial Trophy Most Promising School Boy: **Hunter Norman**



Neat Cut

Phone: Anita Green 027 506 2418
Tuesday 9-5pm, Thursday 10-8pm, Friday 10-5pm - Appointments are encouraged.

CHAMBERS REPAIR SERVICE

45 Half Mile Road, Tuatapere
Ph: (03) 226 6654

- 24 hour Self Service Fuel
- Full Mechanical Workshop
- NZ Post Centre
- Agents for Wide Span Garage



Bring your lawnmower in for a service now & beat the rush

MTA Gift Vouchers Available



PLATE METER SERVICES
TROUGH CLEANING SERVICES

- Specialist in quality pasture meter reading with advanced sensor technology
- Provide 200 measurements per second or 18,500 readings over a single 500m pass
- Provides a fully integrated electronic support system
- Provides a secure web-based storage of information with easy access
- Prompt generated feed wedges for rapid decision making and seasonal comparisons
- Generate reports at the gate, supplying valuable pasture cover data and comparable results every time
- Improve heath & increase animal hydration
- Enhance production & improve water quality
- Reduce bacterial/algae contamination of trough water

CLEAN TROUGH WATER MEANS IMPROVED LIVESTOCK HEALTH

Now 2 bikes available for pasture metering



Brett George • P 027 351 3408
E platemeterservices@gmail.com

BARRETT *Ag* LTD

FULL SILAGE AND BALEAGE SERVICE



ALL CULTIVATION
INCLUDING DIRECT DRILL
AND STRIP TILLING - PRECISION PLANTING



EXCAVATION
20 TONNE DIGGER/ GRADER
D85 BULLDOZER/ ROLLER
TIP TRUCKS AND TRAILERS



Barrett Ag Ltd
Ph: Kahu- 027 5183 448
E: barrettagltd@gmail.com
FB: Barrett Ag



**For Landscaping,
Land Maintenance,
Gravel Supply & Cartage**

**GRADES OF CRUSED & SCREENED GRAVELS,
ALKATHENE LAYING, ROOTRAKING,
FARM TRACKS, DAIRY LANES**



**ELEVATOR SCRAPER,
BOBCAT & ATTACHMENTS,
LANDSCAPING, TRENCHING AUGERS**

Supplies of Gravel Ex Waiau River

River Run Screened Grades Concrete Gravel Pea Gravel
Rejects for soak holes Crushed - AP30 & AP65
Peebles for Sheep and Cattle yards and calf sheds
Fines suitable for cow lane capping

**K J SUTHERLAND
GRAVELLING &
AGRICULTURAL CONTRACTOR
2475 OHAI-CLIFTON H/WAY
ORAWIA RD2 OTAUTAU 9682
Ph 0274 367 934**

**K.J. Sutherland
Contracting
Bobcat T190**

**With attachments: Landscape Rake,
Augers and Trencher**

**Suitable for all landscaping, shed and yard
maintenance**

Muck-spreader and tip trailer available



**PHONE KEVIN
027 367 934 / (03) 225 5716**

MILLARS

- PLUMBING
- GAS FITTING
- DRAINLAYING
- LICENSED BUILDER

Master Plumbers
f Ph 027 4340 705 or 03 225 8567



We specialise in:

**Resource consents
Farm environmental plans
Policy advice
DOC concessions
Landscape plans & assessment**

We take care of the paperwork,
so you can do what you do best!

Sonya: 027 5050 077
Rebecca: 027 4246 129
www.slwp.co.nz
Locally owned & operated



Agricultural Contractors servicing Western Southland and beyond.

BALAGE - SILAGE - GROUNDWORK - FEED TRADING
Nigel 021 226 6156 / fowlecontracting@gmail.com



Tim and Superior go the extra mile

Are you frustrated with the lack of service from your local fertiliser consultant, peddling the same advice year after year regardless of your production outcomes, environment and sustainability?

Give **Tim Adcock** of Superior Fertiliser Specialists a call. He will bring a whole new meaning to service and client/advisor relationships.

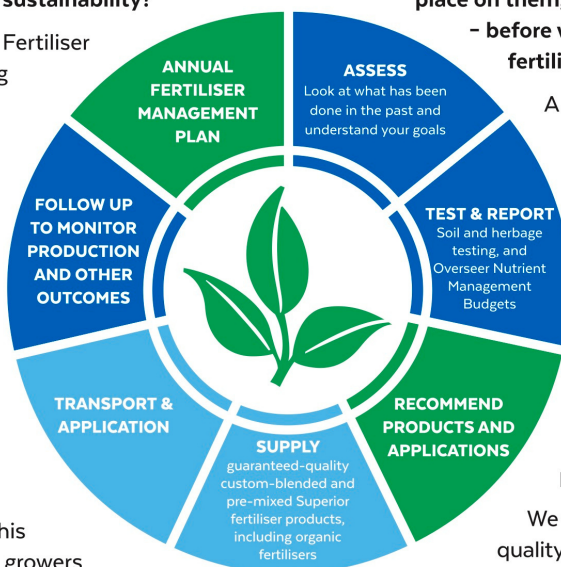
Tim is a key member of the highly skilled Superior team totally committed to helping you develop healthier, more productive soils and plants.

We form a specialist fertiliser company that provides high quality advice and products at competitive prices. We have been doing this for South Island farmers and growers for just on 20 years.

Superior promotes a total soil care package. First, we get to understand the make-up, nutrient status and health of your soils, the demands you are going to place on them, and your production goals – before we apply one kilogram of fertiliser.

A comprehensive regime of vigorous soil tests will be undertaken and the results will provide the basis of a Superior Fertiliser Management Plan customised for your unique situation. This will complement your farm's Environmental Plan and provide the blueprint for an ongoing annual fertiliser programme.

We then supply guaranteed-quality solid fertiliser for your pasture and crops, monitor production and other outcomes, and update your Plans as required.



It's free to talk so don't hesitate to give Tim a call.
Phone 021 418 224



Tim Adcock
Fertiliser Advisor
Otago/Southland
021 418 224
tim@superior.net.nz

 FERTILISER SPECIALISTS
SUPERIOR
www.superior.net.nz

TUATAPERE SERVICE STATION

20 ORAWIA ROAD

PHONE: 03 2266475

HYDRAULIC FITTINGS & HOSES

WE STOCK A GOOD RANGE OF CRIMP ON HYDRAULIC
FITTINGS FOR AGRICULTURE HOSES WE CAN ALSO
REPAIR OR MAKE UP NEW HOSES

FOR ALL YOUR MECHANICAL NEEDS

Car & 4WD WOF's
Trailer, Caravan & Motor bike WOF's
Servicing all vehicles
Light Engineering
New Tyres
Electrical Work
Scanning of most vehicles

RIDGELINE CLOTHING

COME IN FOR A BROWSE WE
HAVE A LOT OF CLOTHING AT REDUCED PRICES



NZ TRANSPORT AGENCY
WAKA KOTAHU

WE CAN PROCESS ALL YOUR

REGISTRATIONS
ROAD USER CHARGES
CHANGE OF OWNERSHIPS
VEHICLE EXEMPTIONS
CANCELATION OF REGISTRATION
CHANGE OF HUBOMETER

