



WESTERN Wanderer

Tuatapere | Clifden | Orawia | Blackmount | Monowai | Colac Bay | Orepuki

Cover Photo Credit: Naomi Eveleigh

Issue 241

At a glance ... what events are on this month? **FEBRUARY 2022**

MONDAY	TUESDAY	WEDNESDAY	THURSDAY	FRIDAY	SATURDAY	SUNDAY
	1 Tuatapere Amenities Trust Funding Applications open	2 School Term 1 Begins	3	4	5 Second Hand PopUp Shop TPC Main Rd 10-2pm	6 Waitangi Day
7 Waitangi Day (Observed) No school	8	9	10	11	12 Second Hand PopUp Shop TPC Main Rd 10-2pm WTCC Club Day Out 10am	13 SPOT Event Family Fun Day Out Waitangi School 1pm
14  Valentine's Day	15	16 Tuatapere & Districts Promotions Inc Committee Meeting 7:30pm WTCC	17 The First 1000 Days & Beyond - John Parsons 1-3pm Tuatapere Plunket Rooms Tuatapere Hump Ridge Charitable Trust AGM 7:30pm WTCC	18	19 Second Hand PopUp Shop & Market Day 10-2pm TPC Main Rd The Great Tuatapere Duck Races Boundary Creek 10:30am	20
21	22	23	24	25	26 Tuatapere Hump Ridge Track trust Community Afternoon Tea - WTCC 3:30pm	27
28	29	30	31	1	2	3
<i>Coming up ...</i>	2022 Blackmount Trail Ride 12 March					

Special thanks to



SEE INSIDE FOR MORE DETAILS!
Want your event here? Let us know at
yourwesternwanderer@gmail.com

COMMUNITY NOTICES & EVENTS

HANDY PHONE NUMBERS

EMERGENCY

POLICE / FIRE / AMBULANCE: **111**

MEDICAL CENTRE: (03) 2266 123

TUATAPERE POLICE STATION:
(03) 2269 020

TUATAPERE COMMUNITY WORKER:
027 757 5983

HAUROKO VALLEY SCHOOL OFFICE:
(03) 2266 753

WAIU AREA SCHOOL OFFICE:
(03) 2266 285

TUATAPERE CEMETERY TRUST:
(03) 2266 065

CHAMBERS SERVICE STATION:
(03) 2266 654

TUATAPERE SERVICE STATION:
(03) 2266 475

TUATAPERE FOUR SQUARE:
(03) 2266 898

TUATAPERE OUTDOORS & HARDWARE:
(03) 2266 363

PLEASE HAVE YOUR ARTICLES, NOTICES, OR UPDATED ADVERTS FOR
THE WESTERN WANDERER

SENT IN
BY **20th of February** (for the March Issue)

THE IMPACT TECHNOLOGY CAN HAVE ON The First 1000 Days & Beyond..

Presented by John Parsons

John will take you on a journey, looking at the potential impact of ICT on children ages 0 to 5 and beyond moving towards the teenage years.

It is vital that children are allowed to be children and progress within a therapeutic and positive environment towards early adolescence and beyond.

The workshop identifies appropriate screen time use from 0 to 5 and how to create a family space that is sensitive to a child's needs in early childhood.

A key focus in the workshop is teaching adults how to safeguard children online and offline.

DATE:
Thursday 17 FEBRUARY

1pm - 3pm

FREE OF CHARGE

@ Tuatapere Plunket
48 Main Road,
Tuatapere

Topics covered included:

- Screen time
- The importance of sleep
- The importance of movement
- Identifies protective factors for parents and children

Proudly supported by:

Rotary CYBER IQ PROJECT

For more information please contact

Tuatapere Parents Group on NDvanveen@hotmail.com



Southern REAP Inc

RURAL EDUCATION

WWW.REAP.CO.NZ



Celebrating 20 years of the Tuatapere Hump Ridge Track

This event is to celebrate the extraordinary amount of time and energy which had been invested in the Tuatapere Hump Ridge track by the trust and the community.

The Trust was formed in August 1994 and an account in the name of the Tuatapere Hump Ridge track was opened with a donation of the amount of \$250 dollars, which had been donated by David McNay. The local publican at the time.

After years of hard work and dedication, work started on the building of the track in January 2000. Finally on the 3rd of November, 2001 the track was opened by former Prime Minister of NZ, Helen Clark.

*We would like to thank past and
present members of the
Tuatapere Hump Ridge Track
Trust and the wider community
by inviting you all to
an Afternoon Tea
to be held on the
26th of February
at 3:30pm
at the*

Waiau Town and Country Club.

For catering and COVID purposes please indicate your interest to **Dale Egerton** on 027 3106 199 by February 12th.

Red Traffic Light System: Vaccine Pass Required Event

AGM

TUATAPERE
Hump Ridge
track
NEW ZEALAND

The Tuatapere Hump Ridge Charitable Trust wish to advise that their AGM will be held on the
17th February 2022 at the
Waiau Town and Country Club at 7:30pm.
Apologies to Kathryn Menpes 021 08116603

Waiau Town & Country Club

invite you to

Club Day Out!

12 February 2022

at the Waiau Town & Country Club, King Street, Tuatapere

Enter your best Veges, Herbs and Baking!

Cash (Adults) / Voucher (Kids) Prizes

Entry Fees: \$2 per entry, Kids enter FREE!

Open to EVERYONE with proceeds raised going to Hospice & the
Blair Vining Southland Community Hospital

THREE SECTIONS TO ENTER

Veges

- 3 potatoes - white
- 3 potatoes - red
- 3 carrots
- 3 tomatoes (leave stalk on)
- Selection of veges on a tray
(only 1 of each kind - max of 7)

Herbs

- 1 sprig of any herb

Baking

- Best tasting Cake (any kind & it will be sampled!)
- Best tasting Slice (3 pieces on a plate)
- Best Decorated Cake (won't be sampled BUT will be auctioned off at Prizegiving)

Open at 10am - Entries must arrive on the day by 10:30am

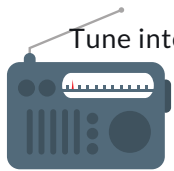
PLEASE ENSURE YOUR ENTRIES ARE CLEARLY NAMED!

SECTION PRIZES PRESENTED at 1:30pm

 COFFEE | BOUNCY CASTLE | CANDY FLOSS
SAUSAGE SIZZLE | CHOCOLATE WHEEL | AND MORE ...

Bar open from 12pm. Restaurant open from 5pm.

Vaccine Pass Required Event



Tune into Tuatapere's very own Radio Station

88.2 FM - Tui FM!

Hits of the 80's & 90's and
today's current music!

COMMUNITY NOTICEBOARD

THANK YOU

We would like to say a massive thank you to our close friends, neighbours, WAS, WAS PTA, Tuatapere Lions and the whole Tuatapere Community for their support, comfort and generosity of hampers, baking, food orders, yard clean up and general support at the time of Jamie's passing. It has given us strength knowing we live in a supportive community during this time.

Minessa, Zeke and Maddy Erskine

TUATAPERE HIGHLAND DANCING

Tuatapere Highland Dancing is continuing for the 2022 year. Lessons commence in February.

If you would like your child to join and learn the art please ring **Coke 021 351 181**

TUATAPERE AMENITIES TRUST

Application Forms for the 2022 year funding will be available from February 1, 2022 at the Tuatapere Service Station, Chambers Repair Services and Tuatapere Outdoors & Hardware

Completed Application Forms need to be submitted by 30 April, 2022.

The Trust wish to remind applicants that applications for wages, administration and operative costs or retrospective funding will not be granted.

TUATAPERE DOMAIN BOARD

Tuatapere Domain Board would like to thank the following businesses for their help and support over the last 12 months in keeping the Domain a pleasure to visit. They are:

DT KING TRANSPORT LTD

HARRY'S MACHINES & EARTHWORKS

NORMAN FARMING LTD

THE GREEN MACHINE NURSERY

46° SOUTH BUSH HONEY

PHILLIPS CONTRACTING

TUATAPERE SERVICE STATION

WESTERN SOUTHLAND HIRE

and THE CORRECTIONS DEPARTMENT

SALVATION ARMY FAMILY STORE TRUCK

The Salvation Army Family Store Truck will come out and collect large amounts of your pre-loved furniture & other household items. This service is free. Please call the store to organise your visit on **03 214 5380**



Family Store

Donate. Buy. Help.



familystore.org.nz

TUATAPERE HEALTH & GIFT SHOP

- Riverton Pharmacy

SHOP HOURS

Opening time: 12.00pm.

1st prescription drop from 12.30pm daily.

If we can help in any other way, please contact Riverton Pharmacy **(03) 234 8515**



COUNTRY CORNER CRAFTS

Come in and browse and see what we have to offer. Hats, scarves, children's knitwear, cards, jewellery, woodware, sewing, jams, pickles, sauces, etc.

Tuatapere souvenirs "On Natures Edge" logo are always available.

Is anyone interested in joining to sell their crafts? You are more than welcome to contact us.

Want to volunteer your time & work in the Craft Centre - let us know! It's a great way to meet people! If you wish to view the shop and it is closed, please ring the ladies below to open it for you.

Louise Greber (03) 668 6001 or

Lyla Sherriff (03) 226 6187

COMMUNITY NOTICEBOARD

TUATAPERE PLAYGROUP

23B Orawia Road. Friday Playgroup 9am - 12pm

All parents and children welcome!

Children's morning tea is a packed lunchbox from home at Playgroup (as opposed to a shared morning tea).

Any queries please contact:

Gemma Bennett 022 040 3368 Alice Harris 027 270 0363

CLIFDEN PLAYGROUP

45 Otahu Eastern Bush Road.

Every Wednesday (during School Term) 9:30am - 12:30pm.

All mothers and children welcome.

Bring packed lunchbox for your child's morning tea.

Any queries to: Sarah 027 699 5234

WAIU VALLEY PRESBYTERIAN CHURCH

Services for all ages! Every Sunday at 10.30am.

Tuatapere Presbyterian Church, Main Street, Tuatapere.

All welcome to join us.

SPREADING THE GOSPEL MESSAGE

Our names are Rhonda Gibson and Desirée Watchorn.

We are living and working in the wider Southland community during 2021/22.

We share the Gospel message at various locations around Southland each week - currently in Gore and Invercargill. These meetings are open to the entire community.

If you prefer, we could meet you somewhere that suits you better.

We only use The Bible as our reference. Free of charge.

Phone or message 027 5727 468 or 022 6485 987



TUATAPERE VALLEY SCOUTS

Unfortunately due to lack of leaders and children willing to take up the challenge of scouts, along with the ongoing Covid uncertainty, at this stage Scouts, Cubs and Keas **will no longer be held in Tuatapere.**

We will reevaluate the situation at the end of Term 2 this year. Any inquiries, please contact:

Quinton (group Leader) (03) 226 6969



WAIU MEMORIAL LIBRARY

Library Hours: Fridays

10:00am - 11:30am

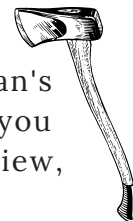
2:30pm - 4:00pm

7:00pm - 8:00pm



Observing our normal hours under Red however we will be limiting the number of people that can be in the library at the same time.

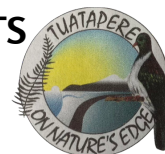
TUATAPERE BUSHMAN'S MUSEUM



Orawia Road. If the Bushman's Museum is not open when you have visitors who wish to view, you can contact:

Lindsay Faulkner (03) 226 6650 to arrange a suitable time.

TUATAPERE & DISTRICTS PROMOTIONS INC



We are always interested in hearing new ideas and seeing new faces. Everybody is welcome!

We meet at the Waiau Town & Country Club, 3rd Wednesday of the month at 7:30pm!

Contact Paula: 027 4346 777

Our Next Meeting:
Wednesday 16 February 2022

SOUTHLAND COMMUNITY LAW CENTRE

Free legal information and advice for the community of Southland.

2nd Floor, Cue Building, 33 Don Street, Invercargill.

Phone (03) 214 3180

Freephone: 0800 550 800 (outside Invercargill city only)



ESSENTIAL OILS 100% PURE GIFTS OF NATURE
Florals Trees Plants Herbs Spices Citrus

To Learn More, phone or text your local Wellness Advocate
Carol Erskine Papatotara 0274 599 654



TUATAPERE AMBULANCE

Did YOU Know?

The Tuatapere Ambulance is a funded service by the Tuatapere Lions Club, for the residents of Tuatapere & Districts.

Should you receive an account for this service from St John, please forward it immediately to:

The Treasurer

Tuatapere Lions Club

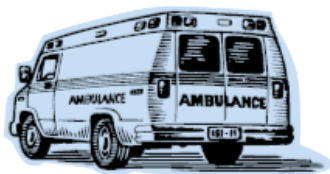
PO Box 47

Tuatapere

Sometimes we experience difficulty in receiving the invoices for YOUR trip - so PLEASE do forward them on to us.

Thank you!

**Tuatapere Lions Club Charitable Trust
Ambulance Committee**



COMMUNITY NOTICEBOARD

TUATAPERE TOY LIBRARY



Tuatapere Toy Library has been a toy swap/hire service provided to the young families of Tuatapere and surrounding since 1989. The purpose is to create opportunities for the little people of our community to have accessibility to toys. A small contribution of an annual membership allows families to join the group and have access to the toys.

For more information or questions please text or ring Nathalie Pahl on **027 4759 075**

COACHES + MANAGERS NEEDED!



Waiau Star Rugby Club Senior Team are looking for expressions of interest from Coaches and/or Managers for the 2022 season. We have a young, enthusiastic team, showing good signs with both development and dedication.

If you are interested, please contact:

Blayne 027 631 7273 or

Pete 027 520 2753

INTERESTED IN GENEALOGY?

Are there any like-minded people interested in belonging to a genealogy group here in Tuatapere, so we can learn and share ideas about starting family trees, researching, DNA etc. I thinking a meeting once a month perhaps. Ancestry and MyHeritage have DNA kits on sale at the moment. Contact Karen Barry alsobarky@gmail.com or on FB Messenger

SENIOR CITIZENS

Senior Citizens is a group of over 60s that meet every **Friday afternoon at 1pm** at the rooms behind the RSA Hall.

We are always looking for new members so if you would like a fun afternoon playing bowls, cards or just catching up with friends, come and join the group.

Contact: Olive Bennett Ph (03) 2266 477

WESTERN SOUTHLAND HEALTH SHUTTLE

The Western Southland Health Shuttle Service travels from Otautau, Ohai, Nightcaps, Tuatapere, Riverton - covering all of Western Southland. We also connect with the Invercargill-Dunedin shuttle.

The Western Southland Health Shuttle operates Monday - Friday (excluding Public Holidays).

Bookings are required by 3pm the day prior to transport.

Ph: 0800 103 046 to book.

Please book as soon as you receive your appointment.

TUATAPERE VOLUNTEER FIRE BRIGADE

We're on the lookout for members to join this rewarding organization. We are looking for persons who are, ideally, available throughout the day.

If you think that you would like to try this (sometimes lifelong) commitment, then please feel free to come and try it!

We train on Tuesday nights at 7:30pm during daylight saving and 7pm through the winter months.

We look forward to meeting with you.



POP UP SHOP

Quality second hand goods
Affordable prices

New Opening hours

Friday 2pm to 4pm and Saturday 10am to 2pm.

Tuatapere Presbyterian Church Hall, Main Road, Tuatapere. Stay a while and enjoy a cup of tea or coffee and something to eat. **Everyone welcome.**

Have you had a New Year clean out?
Do you have goods you no longer need or use?
Are you happy to donate some goods?

Contact me for collection or a drop off point.
Carol Diack 021 110 1835

MARKET DAY

Stalls of craft and other goods
Held in conjunction with the POP UP SHOP

Every 3rd Saturday of the month from 10am to 2pm
Tuatapere Presbyterian Church Hall, Main Road, Tuatapere. Stay a while and enjoy a cup of tea or coffee and something to eat. **Everyone welcome.**

To book a table or any queries please phone or text
Carol Diack 021 110 1835

TUATAPERE ENVELOPES

Envelopes printed with the
"Tuatapere on Natures Edge" Logo can be
purchased at Country Corner Craft Shop
1A Orawia Road Cost \$3.00 per 10



Get your car washed, dried and windows cleaned
Price arranged on request!

Contact: Rex Hibbs Flat 1/26 Orawia Rd, Tuatapere

ADDRESS NUMBER PLAQUES

Address number plaques can now be
ordered through the Tuatapere Community Worker
Support Trust. These can be clearly seen anywhere day
or night. The number plaques are for properties. Each
number must be specific and correct for this purpose.
To order please call Keri Potter 027 757 5983



NEED A JP?



The following Justices
are available
by appointment:

Tuatapere

Keri Potter 027 526 3137
Donald Egerton 027 432 5407

Te Waewae Bay

Shirley Whyte 027 504 5220

Blackmount

Nicky Baker 0276435880

WESTERN SOUTHLAND WOOLCRAFT GROUP



Spinning, Felt, Weaving, Knitting,
Crochet. Other crafts welcome!
1st & 3rd Wednesday of the month.
10am - 3pm. \$3. BYO Lunch.
Scout Den, Erskine Street.
For details please contact:
Helen Todd 022 103 9327



TUATAPERE & DISTRICTS LIONS CLUB PROJECT



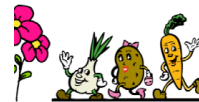
SUPER DIRT

Super dirt bags are now
weighed so more in each bag!
\$8 per bag - ready for your garden!

Super dirt can be collected from:
Cracks Yard, Grove Burn Road,
in the mornings Monday to Friday.
Weekends by arrangement.

Delivery by arrangement - (but not
guaranteed)

Phone Trevor (03) 225 5864 or
Stephen (03) 226 6817



TUATAPERE COMMUNITY WORKER

Room 5 Medical Centre
69A Orawia Road

Monday - Thursday 10am to 3pm

Keri Potter 027 757 5983

Email: tcworker@xtra.co.nz



Tuatapere Freight

LOCALLY OWNED & OPERATED

RUNS MONDAY TO FRIDAY
WEEKENDS BY ARRANGEMENT

Phone Brandon
027 436 4360



IN & AROUND THE COMMUNITY

Clifden Rural Women Celebrates 90 Years

Ann Sutherland, Secretary

On the 26th November, 2021 Clifden Rural Women celebrated their 90th birthday at Orepuki Cafe with a meal, speaker in attendance and the cutting of our cake made beautifully and most scrumptious by the staff at Orepuki Cafe. The theme was the journey of change during the days of Wdff to the current days of Rural Women. Lynley McKerrow - our speaker spoke on the role of women in the community and Wendy Knowler had the honour of cutting our cake.

It has been my pleasure to look through the old minute books in my possession to look into the lives of my predecessors. The books start at July 1992 continuing until now. The reason being, that in 21 6 2000 it was moved at a meeting, to store the early records to the Southland District Council archives. The rest of Western records are there as well. In the early days we were known as Wdff as until 12th May 1999 when a special meeting was called to vote on the name change of the national organisation. Choices were between Rural Focus Network NZ Inc; Rural Women NZ; or Wdff Inc. Clifden's preferred option was Rural Women NZ with Wdff Inc being second choice. Now of course we are very much used to our name. In the first meeting in the book were 9 members in attendance with 2 apologies. Their lives revolved around the Clifden Hall and the area around it known as their Rest Area. A rhododendron named "Golden Witt" was planted and a project planner had a table and a kowhai tree to be added to the list. Over the years the area was maintained in conjunction with the Hall Committee. Of interest was the project of 90 trees for 90 years around the historic Clifden bridge area the celebration of which is where we are today. Consultation with the Community Board and the locals saw us help with the installation of trees and purchase a barbecue table for the site. New toilets have been supplied to the site and it is quite the tourist honey pot. Many campervans use the parking site alongside the bridge.

There have been many presidents over this time, Molly Sutherland, Virginia Broughton, Pauline Gardner, Sandra Scott, Jocelyn Broughton, 1999-2002, Wendy Knowler, Virginia Broughton 2004-2017, Lynley Whyte 2018- 2021. Sandra Scott is mentioned over the years as the Floral Secretary and Jocelyn Broughton as the Welfare contact. Over the years various members have been presented with awards for their dedication to Clifden Rural Women. Wendy Knowler, Sandra Scott, Pauline Gardner and Virginia Broughton have been presented with the "Bar of Honour". Life membership have been bestowed onto Jocelyn Broughton, Wendy Knowler and Virginia Broughton. Please accept my apologies if I have missed anyone here.

In 1995 Clifden celebrated their 65 years and the cake was iced by Gloria Sutherland who was presented with a Womens Division Teaspoon and some of the cake for her efforts. I wonder what these teaspoons would have looked like.

Fundraising. The catering for the Waiiau Collie Club is mentioned in the minutes for a few years.

Shearing magazine

Des Williams (editor)

Tel 07 839 2891 : Mob 0274 833 465

Email : shearingmag@xtra.co.nz

Member NZ Guild of Agricultural Journalists and Communicators (Inc)

LAST SIDE PUBLISHING LTD
PO Box 102, Hamilton 3240, New Zealand

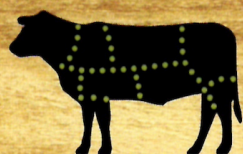
RAW FARM HOMEKILL

Wayne & Rachel Saunders
Qualified Butcher

027 457 6350

rawfarming@yahoo.co.nz

82 Clifden Highway
Tuatapere



Cut up the way you want

Beef

Pork

Sheep

Venison

Other game meats

Traditional Smallgoods

Outings have been for meals, to inspect the forestry belonging to Rural Women and many speakers on various topics. Wag Days were supported in the times of farm income diversification in the 1980's. Alison Broad encouraged women to rise up learn new things off farm and to be resilient. For a few years in the minutes featured competitions entered by Clifden for the Festival of Talent. This was held in Otautau and in May 1998 Clifden won the Baker Trophy for "lovely floral works" Pauline Gardiner is mentioned here.

Speakers over the years include: Anne McCracken on her role with the Southland Regional Council; Dr Sue Pearce for Menopause the time of change; Lesley Elliot was brought to Southland to talk on Healthy Relationships for young girls, promoting her book "Loves me Not" following the tragic death of her daughter Sophie; Men's Health was sponsored to cover travel costs for Dr Dave Baldwin speaking on Men's Health issues. Especially getting men to consider their health as needing maintenance. Helping the Community bring along Mike King to talk at the College on Depression, bringing this as an issue to the public to be aware of and to talk about it. This still remains an important issue. One meeting in 1986 was followed by a session on Foot Pampering. WE could all do with this!

Change. This takes us out of our comfort zone and Clifden has faced the issue of the change in the banking industry. Losing the Tuatapere National Bank, to losing the ability to pay by cheque and now adjusting to online banking. Losing our Post Office and having postal services being done through agents in the town. Who would have thought that you would go to the garage to send a parcel away?

Membership. Strangely enough this has been mostly stable with around seven of the members making it to each meeting. Aug 1998 when it was decided to meet bi-monthly on the 3rd Wednesday of the month to enable members to plan ahead. However the least amount of members present was 4 with apologies of 2 in Feb 2000.

Support in the community. We have contacts with the community worker to help especially during Covid Lockdown 2020 and the Plunket Nurse to distribute woollen singlets and little golden books to the mothers of new babies. The Waiau Health Trust has often been supported as well as the ambulance. We are encouraged by the Toy Library making life easier for young mums in the town. Baking is still done for those having adverse times in our community as our forebears have done. Baking is also taught to the willing school children in the holidays and the young rural farmworkers in conjunction with Wairaki Station. This has helped them both nutritionally and socially. We have made bookmarks for IDRW, checked on our Maple trees at the Otautau Aboretum. Distribution of money from the forestry proceeds is to help local events, health and promote education of our young and not so young people.

WE have worn our Clifden caps and are generally making ourselves known in the area. This I imagine will be also the theme of our ladies who join us in the future. Since this meeting our year our President Lynley Whyte has been given the recognition for Best President Report for 2021. A well earned recognition. The year has indeed finished off well. We are looking forward to 2022 with what it may bring.

WESTERN ELECTRICAL

2008 LTD

Electrical Solutions

Domestic | Industrial | Commercial

Quality Service at Competitive Prices

- New Builds, Rewiring & Alterations
- Dairy Shed, Farm & Industrial Maintenance
- Hotwater Element Replacement
- A/H Call Out Service Provided



Ph 03 225 8974 / 027 439 3787

Fax 03 225 8973

MOUNTAINS EDGE CABINS MONOWAI



Hunting, Fishing, Mountain Biking,
Kayaking & Tramping
Cabin Accommodation

12 Cabins
Double and Single Available
\$35.00 per person per night

Eftpos available

Full Kitchen Facilities, Showers, Toilets, Playground
& the Tennis Courts right across the road!

We are 'pet friendly'

www.mountainsedgecabins.com
Email: mountainsedgecabins@gmail.com

75 Turbine Drive, Monowai. Ph. 03 225 8267

WaterForce

Irrigation Systems
Pumping & Filtration
Effluent Dispersal
Water Management

20 Winton Hedgehope Highway, Winton

03 236 9805 www.waterforce.co.nz

0800 4 FORCE (4 36723)



MR STEEL

TUATAPERE

PH: 027 276 6816

MALCOLM

**For all your engineering,
steel fabrication and repair needs!**

Lynley McKerrow

Celebrant
Funeral and Marriage

P: 0272 974 767

E: nanamac60@xtra.co.nz

with care - with love - with dignity



C: 0274 247 102

T: 03 225 8652

E: admin@drakeplumbing.co.nz

KIERAN DRAKE

Certifying Plumber
& Drainlayer

FORDE SHEARING LIMITED

Available for all new and existing clients

For all your shearing and
crutching requirements

Please phone Darin or Julie Forde

(03) 235 8853
027 229 7760



**BEN MCMASTER
BUILDING**

Ph: 027 202 7955
benmcmaster@live.com

- Licensed Building Practitioner
- Sheds, renovations & new homes
- Based in Western Southland

You dream it, we'll build it

Want to know more about the Hump Ridge Great Walk Project?

Project Webpage: Get all the facts and
stay informed via

www.doc.govt.nz/hump-ridge-great-walk-project

Project Email: Contact the project team
at any time to ask questions or to be
added to the distribution list to receive
these newsletters:

HumpRidgeGWP@doc.govt.nz

Media Enquiries: please direct to
media@doc.govt.nz

Want your local photograph to be featured on a postcard?



Send your photographs to
yourwesternwanderer@gmail.com

PAUL ANDERSON BUILDER

AVAILABLE FOR ALL YOUR
BUILDING REQUIREMENTS.

NO JOB TOO SMALL.

COMPETITIVE RATES.

REFERENCES AVAILABLE!



Mobile: 027 890 3602

thetakis@outlook.com

Rubbish Challenge

Karina Gerzabek

The History of the Rubbish Challenge

One day I was out for a walk along one of the tracks. It was lovely but I couldn't help but notice how much rubbish there was on the ground. I picked up some of the rubbish but I didn't have a bag and had to leave a lot behind. It didn't feel right not to pick it up and take it with me.

Later that day my sister and I were feeling lazy, sluggish and bored because it was raining and windy outside. I couldn't stop thinking about all of the rubbish I'd seen lying around. So we decided to go on a very special hunt. But it wasn't an Easter egg hunt, it wasn't a treasure hunt and it wasn't a deer hunt. I'll tell you what it was, it was a rubbish hunt.

We immediately went out and started. Each of us had a large garbage bag with us. We gave ourselves an hour to get the garbage bag as full as possible. The one who collected the most garbage in an hour is the winner. To our surprise, it wasn't raining outside at all. It was still windy, but we were so focused that we didn't mind. We often crawled under bushes, so we warmed up quickly. The time went by really fast. We had so much fun that I would have loved to continue collecting. But the hour was already over and I had to go back to the house. I was very curious to see how much rubbish my sister had collected. When I got home, I saw a full garbage bag in front of our door. I knew my sister was back. Of course she won the trash challenge! But I didn't mind! The best gain is to see our nature a bit cleaner!

Imagine if everyone did the garbage challenge in their area once a week. We would have the tidiest town in New Zealand!

When we collected the rubbish, we asked ourselves what else we could do with it instead of throwing it away? I'm excited to see what uses we can come up with for the garbage.

Everyone knows that collecting rubbish is good, but turning it into a challenge is even better!

If you are looking for fun, our trash challenge is perfect for you!



PLEASE HAVE YOUR ARTICLES, NOTICES, OR
UPDATED ADVERTS FOR THE
WESTERN WANDERER

SENT IN **20th of February**
BY **(for the March Issue)**

SEND TO:

yourwesternwanderer@gmail.com

OR DROP A NOTE IN THE MAILBOX AT
18 Orawia Road, Tuatapere

TUATAPER HANDYMAN SERVICES

Barry Bennett
(03) 226 6730

- **Painting - Interior/Exterior**
- **Waterblasting**
- **Spider & Fly Spraying**
- **General Repair Work**
- **Lawnmowing**
- **Weed Spraying**



SOUTHLIFE
Community
CHURCH

Steve & Sharon
are Pastors

and we are an area church



We believe in
Community and
endeavour to
show this the
best we can by
the way we
care and serve!



MISSIONS
"BRIDGE CHRISTIAN
MINISTRIES UGANDA"



We warmly
invite you to
come along to
one of our
services.
It would be great
to see you

Sunday Service
10am Truro St, Orepuki

Shirley Whyte
Your local real estate specialist living & working in Western Southland
now also an Accredited Justice of the Peace.



for:
Friendly service, reliability, sound local knowledge
in Western Southland, Te Anau & Stewart Island
All enquires welcome - all calls answered



Harcourts
Harcourts Real Estate Ltd Licensed Agent REAA 2008

M 027 504 52200 O 03 214 4080
E shirley@harcourtsinv.co.nz
W www.harcourts.co.nz

Rural Lifestyle Residential
For all your Shearing Services.



**No mob too big
No mob too small
We do it all!**

**Contact Ricky Skipper to book in now
027 351 2620**

Specialising in
Dairy Conversions
Rural Fencing
Post & Rail



**H Gill Fencing,
Eastern Bush**
Phone 021 225 5489
After Hours 03 225 5488
Email hamish@hgillfencing.co.nz



accelerate
PHYSIOTHERAPY

office@acceleratephysio.co.nz
60 Deveron Street, Invercargill
(off street parking)
0800 291 475

Accelerate is a gentle form of exercise, effective in providing long term solutions
after an injury, especially low back pain.







We have interests in:

- > Spinal/Back & neck injuries
- > Sporting Injuries
- > Running, Cycling & Multisport
- > Men & Women's Pelvic Health
- > Acupuncture
- > Balance & Dizziness
- > Workplace Injuries / Ergonomic Onsite
- > Work Evaluations & Educations
- > Pilates

Joel Barnes
BPHYT, BExSci

Andrea Robertson
BPHYT, PG Cert ACUP

Andrea Murray
Dip PHYT Dip M.T.

Find us on facebook

www.acceleratephysio.co.nz



Hauroko VALLEY PRIMARY SCHOOL

Kia ora, Bula Bula, Nihao Western Wanderer Readers

Term 4 was a blast - we had Education Outside The Classroom experiences including our Year 5&6 Camp at Borland Lodge, Monowai. Such a fabulous location with Adventure Southland supporting activities including caving through the incredibly impressive Clifden Caves. Our students were challenged to complete abseiling, rock climbing, archery, ABL/adventure based learning and kayaking; all while supporting each other.

Cycle Southland visited to share the Ride Well programme. This supported our tamariki to be equipped with cycling skills they need to enjoy riding their bikes safely. Tomo, Nic, Devon, Snowy and George were masters of engaging everyone of our students from Years 1-8. Just ask your child how to check their bike before riding using A, B, C and D!

Food Technology for our Year 7&8 students involved localised learning as students had to follow a design brief to create some tasty Christmas treats, make purchases and manage time to complete a shortbread/dough, meringue and truffles or cake pops. Special Guest Chef Ethan Flack shared his story and journey as a Western Southland boy, through SBHS to travelling the world refining his craft. His flair for making connections with people through food was inspiring. Our students utilised Tuatapere sausages and Last Light Lodge herbs and vegetables to create a simple yet effective dish for cooking for family over the holidays. Thanks so much Ethan for sharing your talents with us. If you are keen to support Ethan check out his website - <https://www.ethanflack.co.nz/>

To end 2021 we farewelled our Year 8 Leavers with a variety of activities including the BIG Day Out, a Graduation Dinner and Visual Arts with Wayne Edgerton. As Nick, Baxter, Jack, Tyler and Hunter move on to Secondary School, know that the big wide world needs good people who will make a difference. Whether it's making a difference in your family, your school, or your community. Hold on to these values and you will thrive. We wish you the very best with whatever you go on to do, we look forward to seeing the difference you make.

Seasons Greetings
Meri Kirikimete festive
Seasons Greetings
Meri Kirikimete festive

THANKS to our teachers - The thing that makes a teacher great is not just knowledge, it's being able to engage people, make them curious, to fire up their imaginations. Teaching is a profession that requires artistry, skill and judgment. Thanks to our teachers that inspire our learners.

THANK YOU to our support staff - We value your commitment...Your passion... Your professionalism... Your positivity... Your patience! Thank you for working so hard for all of our children.

THANKS to our Home and School, for working tirelessly supporting us in every event whether it's Cross Country, AgriKids, or our major fundraiser - The Blackmount Trail Ride. We are grateful for the support that you provide and the opportunities we have because of it.

THANK YOU to our Board of Trustees for challenging and learning alongside us, for caring about what happens to our children and for your passion and commitment to Hauroko Valley Primary School through your Strategic Leadership.

THANKS to our families who generously give your time in and out of class, for coaching /managing sport teams, transporting students, attending camps as parent help, for your continued supporting in so many ways that help make our school strong knowing "Unity is strength".

THANK YOU to our wider community; to the many unique local businesses, organisations and people who help our school thrive. We appreciate you and the difference you make to our people and place. Enjoy Summer we look forward to reconnecting in the New Year!

Julia Waikato
Tumuaki/Principal

"Always Our Best/Tonu to tatou pai".



Happy New Year Summer Happy Holidays Happy New Year Summer Happy Holidays



Registered **ELECTRICIAN**

For all electrical work
No job to small
A/Hours service available


Jay Brownlee
8 Carlyle Street, Tuatapere 9620
A/H 03 226 6673
Mob 027 4965 863
sparkieintuatapere@gmail.com

For all your Accounting and Tax Solutions

Ask for Janice or Trevor England

 **03 2266110**

Aparima Accounting Ltd
57 Main Road Tuatapere


CANTERBURY CARS
4WD Specialists

For all your vehicle requirements

Cars, utes, 4WDs, vans

Finance available

Contact: Murray Dowling
027 556 2655

Visit our website
www.canterburycars4x4.co.nz



Family Fun Day!

SUNDAY 13TH FEB - 1PM
WAIATU AREA SCHOOL

SPOT LAUNCH EVENT

POSTPONED

See our local frontline emergency services go head to head:

Fire - Police - Ambulance

We are running a family fun day obstacle course with free sausage sizzle.

Bring along a towel and spare clothing!

Contact: Loretta 0274629527 - Kaylene 0274327156

Find us on FB: Search SPOT Tuatapere

Who?

We are a community group who are tackling Suicide Prevention and Outreach within Tuatapere and surrounding districts.

We will be running community events and programmes starting with a Family Fun Day 13th Feb.

What?

Its time to talk about suicide, we will run big and small events and get out into the community to start conversations and engagement. We have a huge amount of support so far - if you want to be involved - get in touch!

Why?

Our community needs to start talking about suicide and how we can help each other when we are in crisis. Its all about creating connection and awareness.

When?

We will be running events - there will be something for everyone. Keep an eye out and get involved!



Vaccine pass required event

WAI AU HEALTH TRUST – February 2022

Medical Centre

I hope your 2022 has got off to a great start and you managed to enjoy some rest and relaxation over the festive season.

Practising under the Red Traffic Light system:

Things will be slightly different for you when coming to the Medical Centre. You will need to stop at reception, and you will have a few questions to answer around your health & wellbeing. You will also notice all our clinical staff are fully kitted in Personal Protection equipment (PPE). This is to give as much protection as we possibly can to our staff and our patients. I appreciate your understanding regarding the measures we have put in place during this time. It is extremely important for us all to do our best to protect our medical centre team. If any of this team become unwell it greatly reduces the level of care, we can deliver to you all.

COVID Booster vaccinations are now available for you at our clinic

if it has been four months since you received your first and second dose. We are encouraging everyone aged 18 and over who have been fully vaccinated for at least 4 months to get a free booster now. Speeding up the booster rollout is one of several ways we are protecting Aotearoa New Zealand from the Omicron variant of COVID-19. While a 2-dose course provides some protection against severe disease from the Omicron variant, a booster is proven overseas to offer greater protection by reducing the chance of more serious infection and the risk of transmitting it to others. At this stage, there is no data available on how long you are protected against infection and disease following a booster dose. Health officials will continue to review information as it becomes available.

We will also be providing vaccines to those aged 5-11 in the very near future. The Pfizer vaccine is highly effective. If children and young adults who have been vaccinated do develop COVID-19, they are far less likely to fall seriously ill and less likely to transmit the virus to others.

Appointments for COVID Vaccines are bookable at bookmyvaccine.nz or you can phone **0800 28 29 26**.

If you have any queries, as always, don't hesitate to phone us on **03 226 6123**

Jo Sanford, Manager

Cell: 027 295 0429



Waiau Health Trust
69a Orawia Road, Tuatapere
Approved Registered ACC Provider
Monday to Friday
9:00am – 4:30pm
Ph.: 2266123

Practitioner Hours
Amanda McCracken (NP) – every
weekday

Sheryl Eden (NP –every Monday &
Tuesday)

Physiotherapist
Tuesdays & Thursdays
Phone for an appointment

Podiatrist
Visits regularly –
Phone for an appointment

Warts/Minor Skin Lesions
Liquid Nitrogen treatment available
Phone for an appointment

Homebased Maternity Care
We are offering this service
in the patient's home.
Please contact Jo Sanford
on 2266123 for enquiries.

Day Activities Programme for
the Elderly
Every Tuesday & Wednesday
Please phone for further information.

District Nursing
Available as required by referral

THE GREAT TUATAPERE Rubber Duck Races!

SATURDAY 19 FEBRUARY 2022



Join us down at Boundary Creek, King Street Bridge for the Annual Tuatapere Toy Library Fundraiser!

10 Races + the Grand Finale Bridge to Bridge Chase!

Bet on your favourite rubber ducks in each race!

Betting Booth opens at 10:30am. Bets close 5 minutes before each race.



BOUNCY CASTLE!

Remember your sunscreen!
Bring your own food & beverages.



Dress to Impress!
Show us your fascinator!

Bring a chair/gazebo & make a day of it!

RACE 1: 11:00am



RACE 2: 11:20am



- 1 Milk 'n time
- 2 Uddlerly Fun
- 3 McRod
- 4 Richie
- 5 Francis
- 6 John
- 7 Lyn
- 8 Alfie
- 9 Nelly
- 10 Archie

- 1 Turbo
- 2 Explorer
- 3 Adventurer
- 4 Swiftly
- 5 Speedy
- 6 Devil
- 7 Oosty
- 8 Dancer
- 9 Gambler
- 10 Sasquatch



RACE 3: 11:40am



RACE 4: 12:00pm



- 1 Charlie
- 2 Mrs Four Square
- 3 A Duck named Vicky
- 4 Honey Soy Nibbles
- 5 Pam's Water
- 6 Chips & Dip
- 7 Speights 24s
- 8 Tui Fruit Platter
- 9 Dog Bone
- 10 Long John Donut

- 1 Wiggles
- 2 Appleton's Rum
- 3 Irish Whiskey
- 4 Alastair's Whoopsie
- 5 Under the Influence
- 6 Cocktail
- 7 Lucky Number
- 8 Upside Down Cake
- 9 Bede's DB
- 10 Mrs Y



41 King Street Tuatapere
Telephone 03-226 5489 Fax 03-226 6489

TO COMPLY WITH GOVERNMENT TRAFFIC LIGHT SYSTEM THIS IS A VACCINE PASS REQUIRED EVENT

RACE 5: 12:20pm

- 1 Fletch Duck
- 2 Sadie Duck
- 3 What the Duck
- 4 Mother Ducker
- 5 Who the Duck
- 6 For Duck's Sake
- 7 Duck It
- 8 Duck This
- 9 Duck That
- 10 Duck Norris

**RACE 6: 12:40pm**

- 1 Daggy
- 2 Willie
- 3 Racey
- 4 Eweno
- 5 Lambbeano
- 6 Magdag
- 7 Dodger
- 8 Swamp
- 9 Cutter
- 10 Trailer Duck

**RACE 7: 1:00pm**

- 1 Old Sparrow
- 2 Old Sparrow's Misses
- 3 Hayden the Master
- 4 Jimmy Thunder
- 5 The Nookster
- 6 Shorty Long Legs
- 7 Raydog
- 8 Boogie Woogie Doogie
- 9 Doogies Lad
- 10 Off the Rails

**RACE 8: 1:20pm**

- 1 Twig Line
- 2 Branch Off
- 3 Log Man
- 4 Barker
- 5 Splitter
- 6 Chipper
- 7 Woody
- 8 Tipper Tip
- 9 Tools Down
- 10 Beer Time

**RACE 9: 1:40pm**

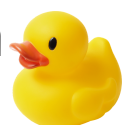
- 1 Hot Wings
- 2 Chip
- 3 Holly
- 4 Quacker 2022
- 5 Daisy
- 6 Goose
- 7 Downy
- 8 Quack Attack
- 9 Eggspresso
- 10 Plucky

**RACE 10: 2:00pm**

- 1 Takitimu
- 2 Kollat Special
- 3 Roast Beef n Mustard
- 4 Merlot Pepper
- 5 Blue Cheese
- 6 Herb n Garlic
- 7 Tui Veni
- 8 Original
- 9 Jimmy
- 10 Sausage

**LAST RACE: GRAND FINALE : BRIDGE TO BRIDGE CHASE : 2:20pm**

The winning ducks will battle it out for
The Great Tuatapere Rubber Duck Race Champion's Cup!





Rabco Ag Ltd – 021 362 766 – admin@rabco.nz
Agricultural Contracting Specialists - Western Southland



**Full silage
& baling
service**



Cultivation – including Direct Drill & Precision Drill



Effluent – Excavators - Hedgetrimming





**HARRY'S
MACHINES**
EARTHWORKS
027 304 3714



* 13 Tonne Digger * 5.5 Tonne Digger * 2.7 Tonne Digger- dry hire or operated
* Tip Truck * Bob Cat * Augers * Post Driver * Tree Saw & Hedge Trimmer

* Tree Trimming * Post Driving * Fencing * Cleaning of Wintering Sheds * Site Clearance * Cartage * Gravelling * Lane Maintenance * General Earthworks

For all enquiries and bookings please contact Lance or Alice Harris
Lance: 027 304 3714
Alice: 027 270 0363
Email: lanceharris533@gmail.com
Check us out on facebook- Harry's Machines

CHAINSAW SHARPENING
All chainsaw chain sizes precisely sharpened and rakers taken down accordingly, guaranteed results
Chain only \$10 Taken Off & Refitted \$13
Please phone **027 308 2501**

WANTED TO BUY
Possum Fur, Hard deer,
Antler, Deer Velvet.
Phone Leith 027 496 3721

**WAIAU VALLEY
SHEARING LTD**



**Simon de Vries
Julie Heaps**
**027 840 9867
03 226 6212**



At this time of year I always seem to have too many courgettes, this recipe is one way of using them up. This loaf is crunchy on the outside and the flavour is out of this world.

Courgette Loaf

Ingredients

- 1 $\frac{3}{4}$ cups flour
- 2 tsp baking powder
- 2 tsp cinnamon
- $\frac{3}{4}$ tsp salt
- 2 eggs
- 1 $\frac{1}{4}$ cups sugar
- 2 tsp vanilla extract
- $\frac{1}{3}$ cup oil (canola, vegetable)
- 1 $\frac{1}{2}$ cups grated courgette
- $\frac{1}{2}$ cup chopped walnuts



Instructions

Preheat oven to 180°C, spray and line a loaf tin.

In a large bowl whisk together the flour, baking powder, cinnamon and salt. Set aside.

In a medium bowl whisk together the eggs, sugar, vanilla, oil and courgette.

Pour the wet ingredients into the dry and mix until just combined. Fold in the chopped walnuts.

Pour the mixture into the prepared loaf tin and bake for 45-50 minutes or until a toothpick inserted in the center comes out clean.

Remove from the oven and allow to cool completely before removing from the tin.

19 Slice and enjoy with some butter.

Waiau Town & Country Club

**Meals (homemade goodness)
available Thurs, Fri, Sat & Sun
from 4pm to 9pm.**

Family Friendly | Happy to cater for dietary requirements.
Please pre-book for groups of 8 or more.

Club Opening Hours:

Mon - Thurs 4pm till close.

Fri 3pm - close.

Sat Noon - close.

Sun 3pm - close.

Book now for functions/birthdays etc

We can cater! Call to discuss options.

03 22 66 489

What's on at the Club:

***CLUB DAY OUT** – Saturday 12 February
10am - Get your Vege, Herb and/or Baking entries
in by 10:30am!

***VALENTINE'S DINNER** – Monday 14 February
3 Course Set Menu, \$100 per couple.
Booking Essential

***STEAK NIGHT** – every Thursday night
only \$25 for a delicious steak meal.

*** MEMBERS DRAW & RAFFLES**
drawn every Friday night! Approx. 7.30-8.30pm.
Come in for a bite to eat and a drink, who knows
you might be the lucky one to win \$!\$!

**Keep an eye on our Facebook Page for
more details on upcoming events**

Annual Membership/Subs

*Everyone welcome to become a member,
just pop in or call the club.*

*Annual membership is \$50 or \$30 for pensioners.
Pay & collect at the club or pay online
and we'll post your card out.*

Phone: **03 22 66 489** | Address: 41 King St Tuatapere
Email: waiautcc@gmail.com | [Facebook: facebook.com/waiautcc](https://www.facebook.com/waiautcc)
| Courtesy Van Available |

We look forward to seeing you!



WAIAU AREA SCHOOL

Year 1-13 Education

Live to LEARN, LEARN to Live

Kia ora Western Wanderer Readers!

Happy New Year and best wishes for an enjoyable 2022. We've had a few new students and staff join our WAS team.

Please look out for our school newsletters and Facebook posts for information, celebrations and pics. We currently have a roll of 135 students (Junior 85 & Senior 50).

We wish all our senior students the very best in their 2022 endeavours.



Teaching Staff:

Mr Andrew Pardoe-Burnett - Principal and Hard Materials Teacher.

Mr Richard Bennett - Senior Leadership Year 11-13, Health & PE, Gateway, Net NZ, PB4L coach.

Miss Jasmine Quinn - Senior Leadership Year 9 & 10, English, Home Economics, Food Tech, Te Reo Maori and Languages.

Miss Clare Robinson - Senior Leadership Year 1-8, Year 7&8 Teacher, Bus Controller.

Miss Brooke Anderson - Primary Teacher and on maternity leave from T2 onwards.

Miss Skye Walton - Year 4-6 Teacher.

Mr Chris Wedderburn - Year 2-3 Teacher.

Mrs Donnah Cleaver and Mrs Gemma Bennett - New Entrant -Year 1 Teacher.

Mrs Lisa Redhead - Music, Senior English, Languages and Kapa Haka Teacher.

Mrs Mary Ann McNab - Senior English, Careers, Geography, History & Life Skills Teacher.

Mrs Hannah Wilson - Art, Horticulture and Agriculture Teacher.

Mr Paul Maloney - Maths Teacher, NCEA and Principal's Nominee.

Mrs Florence Chatelier - Science, Biology & Physics Teacher.
Mrs Chrissy Lampitt - Library and STEAM Teacher.
Mrs Roberta Gover - Home Economics, Senior English and Free Lunches in Schools (FLIS) leader.

Support Staff:

Mrs Charmaine Wedderburn - Office Manager.
Mrs Nina Smith - Office Support and BoT Secretary. Mr John McNab - Hard Materials.
Mr Warwick Hawley - Property Manager.
Mrs Jo Flynn and Mrs Paula McLennan - FLIS and Student Support.

Teacher Aides - Mrs Robyn Stanning,
Mrs Mel Templeton, Mrs Rachel Pardoe-Burnett and Mrs Kiwia Howley.
Lab Technician - Mr Richard Hazle,
School Cleaners - Mrs Karen Reid, Mrs Cheryl Baldwin and Mrs Lynley Sheehan.

Board of Trustees (BoT):

Honorlea Mangion - BOT Chairperson, policies and procedures. Rachael Poole - Finance and self review. Keri Potter - Communication / Health & Safety. Grant Harding- property. Dwayne Unahi - supporting until we find a replacement. Malakai Mangion - Student Rep. To be nominated - Staff Rep.
Andrew PB - Principal.

Our **property upgrades** are nearly complete. The gym wall and floor needs to be finished off. Then we'll be into our next projects - spray painting fences and roof tops, double glazed windows in the primary block and French doors, decking off the primary block and a few other minor improvements.

We're very excited about what WAS is able to offer our students. We are able to provide a **wide range of subject choices** in the senior school with Net NZ (online teacher) as an additional option. Our small class sizes, positive NCEA results, student achievement and behaviour progress, teachers knowing their learners and a **strong sense of belonging** are all proving to be a continual success.

Our Strategic Goals for 2022:

- Sustaining systems and practices;
- Free Lunches in Schools - we are managing this ourselves;
- Mental Health and Well-being (Sir John Kirwan's Mitey) three year approach starting in Term 3;
- Culturally Responsive approaches; and
- Continuing to broaden our students horizons.

Alex Reid CONTRACTING

**Paddock Cultivation from
Ploughing to Sowing
Dry Hire available
Aerating
Direct Drilling
Ridging
Mulching**



Dairy Lane Maintenance

Tip Trailers • Vibrating Roller • 2 Tip Trucks

Sheep Conveyor

Drenching, Vaccination etc • 3 way draft

Large Skid Steer for calf shed cleaning, loading Muck Spreaders etc

4 Muck Spreaders • 16,000 litre Slurry Tanker
Pond Stirrer • Umbilical Slurry System



Rural Contractors
NEW ZEALAND

**PHONE ALEX
0212775308 CELL
03 2255377 HOME**

Your Local Graphic Designer & Printing Specialist

McMAHON design studio

9 Cumnock Street, Wallacetown

P: 03 235 8967 M: 027 242 8109

 E: mcmahondesign@outlook.com 

Wedding, Birthday, Anniversary, Fund-Raiser, Christmas Party, Awards Ceremony, Sporting Event, Reception, Celebration

*Planning
your next
special event?*

Big or small!

Let us make it easy with
an Events Package
custom designed
for you!

Included in every package is a
30 minute initial consult where
we will discuss your project, goals, theme and budget
to come up with a tailored graphic design and printing package
perfectly suited to you, and your event.

This could include:

- An emblem/logo for the event styled to your theme -
- An advertising pack for print and/or online to promote your event -
- Save the Date Cards & Invitations with custom printed envelopes -
- Tickets, Raffle Tickets/Boards, Entry Forms, Flyers, Posters, Banners -
- Seating Charts, Stickers/Seals, Gift Bags/Boxes, Cake Toppers -
- Name Tags, Table Cards, Guest Books, Photo Boards, Certificates -
- Thank You Cards and much more...

Place an order with us for your customised Events Package
before **THURSDAY 31ST MARCH 2022** and get **15% OFF**
the total value of your order

*Applicable only to orders totalling over \$200.00 excluding GST and delivery.

*We offer a wide range of digital printing
and graphic design solutions.*

- | | |
|-----------------------------------------------------|--------------------------------------|
| LOGO/EMBLEM DESIGN including full branding packages | CALENDARS - BOOKLETS - REPORTS |
| ADVERTISING & SIGNAGE DESIGN | NEWSLETTERS - MAGAZINES - CATALOGUES |
| SOCIAL MEDIA GRAPHICS & EMAIL SIGNATURES | ALL OFFICE STATIONERY |
| PHOTO EDITING & CUSTOM ART | PERSONALISED STATIONERY & CARDS |
| CERTIFICATES - PRIZE CARDS - PROGRAMMES | PRESENTATION & PROMOTIONAL ITEMS |
| WEDDING & EVENT STATIONERY | AND MUCH MORE... |

Get in touch with us today for your free consultation and quote!

PROPERTIES WANTED!

Contemplating selling? You might
be surprised by what your property
could fetch on today's market

Contact Julie today for a free appraisal and
to discuss how you could take advantage of
this bouyant property market



Julie Guise

021 256 4164

julieguise@sre.co.nz

SOUTHLAND REAL ESTATE LTD
Licensed under The Real Estate Agents Act 2008

SOUTHLAND REAL ESTATE LTD

Licensed under The Real Estate Agents Act 2008

MREINZ

For all your fencing requirements

WESTERN FENCING

SHEEP | DAIRY | DEER



Call BEVAN 0277 413 213

ADS

ANDERSON DRAINAGE SERVICES

Keeping Southland Flowing



-  Tile Cleaning
-  Culvert Cleaning
-  Septic Tank Blockages
-  Domestic Blockages
-  Rural Drain Blockages

 Fraser Anderson

 021 162 0210

 fraseranderson1@gmail.com

 Forest Hill, Southland

 Follow us on Facebook

Call us today!

INDEPENDENT MIDWIFE

ISOBEL DEVERY

*Caring for women throughout
Pregnancy, Birth till six weeks
Post Natal.*

*Choices for place of birth,
Home or Winton Birthing Units
or Kew Hospital.*

*Free pregnancy tests
available on request.*

**Phone: (03) 22668822
027 2267020**

©Pecoraro, EthicGraphics®

Sewing and Mending Services Available

Experienced machinist offering fast, reliable service with very reasonable rates.

I will mend/make anything from zip replacements to curtain making - just ask!

Free quotes and pick-up delivery service within Tuatapere.



Contact **Deborah**

(03) 226 6783 or 021 0305 667



DAGWOOD DAGGING

Available now to all new and existing customers for all your crutching requirements.

3 Stand or Single trailer available
7 days a week, wet or dry.



No job too big or too small.

Competitive rates

Jeff Chambers

027 3042 241

Ryal Buah

TRANSPORT LTD

CONTACT US TODAY

Phone 03 221 7192

Fax 03 221 7194

- **Excavators for general farmwork**
- **Laser guided drainage**
- **Gorse mulching & land clearing**
- **Lane maintenance**
- **Conversions**
- **Effluent Ponds**
- **Demolition**
- **20 tonne bulldozer, roller, grader**
- **Drain ploughing & alkathene laying**



Ratty Says ...

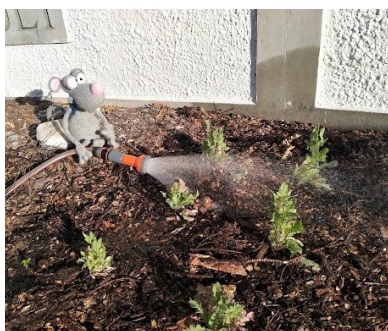
Waiau Memorial Library



Did everyone have a great Christmas? I did. I had so much fun making some of the presents and then giving them to the kids. Well, it was more of a lucky dip than gift giving. I think there might have been one or two 'Unlucky' dips. I hope everyone liked their presents. I know that one of them did because he gave me a Thank You card that he had made himself. I liked it so much that I put it on my wall. I'm already making plans for next Christmas.

Last year the library bought some really cool non fiction books for us. Science experiment books, art books, how to draw books, there's even a book that tells you how to make a door alarm so you know when your brother or sister is trying to sneak into your bedroom. I'm going to try and learn how to do some of the things in the books and then everything I learn is going to be used to make Christmas presents. I'll also be working really hard for my pocket money just in case things don't go as planned and I have to do some last minute shopping. If anyone wants to teach me something new, come and find me at the library. I like doing new things that I can share with everyone.

I'm also working on a little garden project. I'm growing Poppies at the library. Some of them are already trying to flower!



I've been taking really good care of them, making sure they're watered. I even poured some really stinky stuff on them to help them grow. It smelt so bad I wanted to run away. Paws crossed that the Poppies are flowering on ANZAC day.

Tui Base Camp



Open from 7am every day!

Kitchen open until at least 8.30pm

Come in and check out our specials

Thank you everyone for the support over the Xmas and New Year's period. Don't forget we now have a mini-van! Contact us to organise a night out at Tui Base Camp (pick-up and drop-off) with some of your neighbours. Contact **James 027 837 3521** for enquiries.

Hot February Specials

Get in before the price increases!
(Contact **James** for Bulk Orders **027 837 3521**)



Lion Red; Waikato
Speights or Summit
24pk bottles



Speights Summit
Ultra Low Carb
24pk bottles

For all of your dine in and takeaway requirements including:

- In-house roasted Amore Coffee
- In-house made pies, sausage rolls, cheese rolls
- Range of breakfast options
- Packed lunches
- Catering

Phone: (03) 226 6250

www.tuibasecamp.co.nz



Tui Base Camp



Keep an eye on our Facebook Page for our latest updates!





SIZZLING HOT SUMMER DEALS

 Not Stocked Jim Beam Gold; CC Premium 7% 330ml 6pk cans	 \$21.99 EACH Tui Bourbon; Vodka Soda Barrel 51 7% 250ml 12pk cans	 Not Stocked Tui Hard Soda 330ml 10pk cans	 \$22.99 EACH Cruiser 5% 12pk bottle range	 Not Stocked Jack Daniel's & Cola Double Jack 250ml 10pk cans	 \$22.99 EACH Jim Beam & Cola; CC (incl zero) 4.8% 10pk cans	 \$23.99 EACH Major Major 10pk can range		
 \$24.99 EACH Smirnoff Ice Red 5% 10pk bottles	 Not Stocked Effen 10pk bottle & can range	 \$25.99 EACH Clean Collective 5% 250ml 12pk cans Rinse 6% 330ml 10pk cans	 Not Stocked ODD Company 12pk bottles	 \$39.99 EACH Long White 15pk bottle range	 \$13.99 EACH Stoneleigh Marlborough; Lighter ranges	 \$13.99 EACH 19 Crimes (ex Cali Red) range	 \$14.99 EACH Villa Maria Private Bin range (ex PN/Syrah/Sav Blancs)	 \$19.99 EACH Matawhero (ex PN) range Kylie Minogue Rose
 \$36.99 EACH Blackheart Woodstock 1L	 \$37.99 EACH Teachers 1L	 \$39.99 EACH Larios 12; Rose Citrus 1Ltrs	 \$39.99 EACH Captain Morgan (incl Spiced) 1L	 \$42.99 EACH Absolut Ballantines Beefeater 1L Beefeater 24 700ml	 \$47.99 EACH JB 1.125L JB Devils Cut JB Black 1L Makers Mark 700mls	 \$50.99 EACH Bombay Sapphire 1L Bombay Bramble 700ml	 \$51.99 EACH Chivas 12yr 700ml Jameson 1L	 \$54.99 EACH JB Double Oak 1L Haku Vodka Roku Gin; Ratu Rum range 700mls
 \$54.99 EACH Jagermeister Mt Gay Eclipse 1L	 Not Stocked Johnnie Walker Double Black 700ml	 \$55.99 EACH Malfoy Chivas Extra 13yr all 700ml ranges	 \$57.99 EACH Gentleman Jack 700ml	 Not Stocked Tui Strong 500ml cans	 \$13.99 EACH Monteiths 6pk bottle range	 Not Stocked Kingsfisher Strong 330ml 6pk cans	 Not Stocked Fortune Favours 6pk range	
 \$19.99 EACH Tiger; Tiger Crystal 12pk bottles	 \$21.99 EACH Somersby 12pk bottle range	 \$24.99 EACH Mac's (incl Cider) 12pk bottle range	 \$25.99 EACH Tui; Export Gold; Extra DB Draught 15pk bottles	 \$26.99 EACH Heineken 12pk bottles	 \$27.99 EACH Corona 12pk bottles	 \$28.99 EACH Export 33 15pk bottles		
 \$31.99 EACH Haagen 24pk bottles	 \$36.99 EACH Lion Red; Waikato Speights or Summit 24pk bottles	 \$37.99 EACH Speights Summit Ultra Low Carb 24pk bottles	 \$39.99 EACH Carlsberg 24pk bottles	 \$39.99 EACH Asahi 24pk bottles	 \$41.99 EACH Steinlager 24pk 330ml bottles			



Promotion period between 1/2/2022 to 28/2/2022. While stocks last. Promotion only available at participating stores. Please contact your local store to confirm whether they are participating in the promotion and check the pricing in-store prior to purchase. Online pricing will vary.

100% **NEW ZEALAND** OWNED AND OPERATED
thirstyliquor.co.nz

FOLLOW US ON SOCIAL MEDIA



ASK ABOUT LOYALTY CARD BENEFITS & GIFT VOUCHERS



TUATAPERE OUTDOORS & HARDWARE

For all your

Gardening tools, lawn care, garden hoses, insect and disease sprays, potting and compost.

We have those building requirements for that weekend job with a good selection of silicone, nails, screws and bolts.

New fishing rods and reels, fishing lures, good selection of soft bait, fishing nets, flounder and eel nets.



Good selection of giftware.

Come in, check out what we have.

Contact:

Judy **027 225 8192**

Paul **027 890 3602**

Shop **(03) 226 6363**

Painting & Handyman Services

Experienced Painter

I can help with all sorts of odd jobs too!

Gardening
Lawn mowing
Tree & Hedge Trimming
General labouring



Phone **Luke Wikstrom 027 2773 925**



027 252 7933

- ☒ Renovations
- ☒ Extensions
- ☒ New Builds
- ☒ Sheds/Farm buildings
- ☒ Decks
- ☒ Pre-purchase house
- Inspections

Call us for any building requirements

Ph 027 252 7933 email: aaroncbltd@gmail.com



TUATAPERE TE WAEWAE Community Board

Margaret F Thomas, Board Chair

arpad@xtra.co.nz

03 226 6104

027 231 5581

Welcome to 2022. What a year we had in 2021. We are still not out of the woods yet. Covid- 19 still around and Omicron is waiting at the door to come in.

I hope everyone had a great Christmas. Lots of presents, lots of food and fun. Lots of camper vans and families exploring the lower South Island.

Welcome to all the people who have chosen to come to live in the Tuatapere and surrounding areas.

Thanks to the Hauroko School who put lovely artwork in the Green Heart. Several homes had fairy lights on their houses. The community Wooden Christmas Tree sparkled during the evening. Thanks to Keri the Community Worker for arranging a magnificent Christmas Dinner. The Christmas flags blew in the breeze. Did you notice the beautiful new bird flags that Wayne Edgerton painted? Thanks also to "Garden Fairy" Gail for the buckets of colour.

Community Garden

New members are most welcome. Joining fee - being able to do a little weeding from with time to time, and then you are welcome to the vegetables/produce. Check in with Isobel Green. It's a great place for a chat.

Green Heart Volunteers

I have mentioned this before. The Green Heart is a beautiful area in the middle of the town. Dr Elder thought that it would be a great place to plant trees. Once the trains no longer run. It would help the area to control the broom and gorse. You are welcome to become a Greenheart Volunteer. Please contact Elaine Charlton

Tuatapere Te Waewae Community Long Term Plan 2022

Several projects are planned. Updating the play equipment in Monowai, Orepuki, & Tuatapere. Planning will start on upgrading the main street - gardens, history boards etc., Railway Water tanks in Orepuki and Tuatapere. We will be looking for input from the Community.



George Harpur, SDC Councillor, Waiau Aparima Ward

Hi and a warm welcome to 2022. May we all enjoy a great year and remain free from the clutches of Covid 19 to which a vaccine course is meant to reduce the risk to ourselves, our Whanau and all others, free up our hospital systems and MIQ units and let us all go about our lives in a healthy and sustainable manner.

Well, 2022 started off in Tuatapere with a brilliant day at the Domain, great competition in bushcraft and all the other activities that took place. We must thank all the current organisers and volunteers that make days like these possible. Many posted on Facebook as to how they enjoyed the day and the activities but spare a thought for the future of events like this. Without the participation of new assistants and volunteers these activities will eventually fold. Almost all the current sporting and fundraising events rely on you, the volunteer, to participate and make things happen. Many of our citizens are currently involved in these projects, however if you have time on your hands, please step up as your town needs you.

Speaking of stepping up we have just entered a local body election year. In just a few months your community will be calling for nominations for a new Councillor and six members to serve on the local Tuatapere/Te Wae Wae community board. With the prospect of a new data centre at Makarewa, opportunities may well arise in the IT arena for our younger and longer-term citizens to work from home in the high speed internet sector and a likelihood of other downstream industries so the region's future may well be poised to go through a time of good growth so new blood will be needed. Have you the necessary regional knowledge and ability to fill these positions?

Cheers to all.



Phone: Anita Green 027 506 2418
Tuesday 9-5pm, Thursday 10-8pm, Friday 10-5pm - Appointments are encouraged.

CHAMBERS REPAIR SERVICE

45 Half Mile Road, Tuatapere

Ph: (03) 226 6654

- 24 hour Self Service Fuel
- Full Mechanical Workshop
- NZ Post Centre
- Agents for Wide Span Garage



Bring your lawnmower in for a service now & beat the rush

**MTA Gift Vouchers
Available**



**PASTURE METER READING THAT'S QUICKER
AND EASIER, WITH AT THE GATE REPORTS**

- Specialist in quality pasture meter reading with advanced sensor technology
- Provide 200 measurements per second or 18,500 readings over a single 500m pass
- Provides a fully integrated electronic support system
- Provides a secure web-based storage of information with easy access
- Prompt generated feed wedges for rapid decision making and seasonal comparisons
- Generate reports at the gate, supplying valuable pasture cover data and comparable results every time
- Improve health & increase animal hydration
- Enhance production & improve water quality
- Reduce bacterial/algae contamination of trough water

**CLEAN TROUGH WATER MEANS
IMPROVED LIVESTOCK HEALTH**

Now 2 bikes
available
for pasture
metering



Brett George • P 027 351 3408  
E platemeterservices@gmail.com

BARRETT *Ag* LTD

FULL SILAGE AND BALEAGE SERVICE



ALL CULTIVATION
INCLUDING DIRECT DRILL
AND STRIP TILLING - PRECISION PLANTING



EXCAVATION
20 TONNE DIGGER/ GRADER
D85 BULLDOZER/ ROLLER
TIP TRUCKS AND TRAILERS



Barrett Ag Ltd
Ph: Kahu- 027 5183 448
E: barretttagltd@gmail.com
FB: Barrett Ag



**For Landscaping,
Land Maintenance,
Gravel Supply & Cartage**

**GRADES OF CRUSED & SCREENED GRAVELS,
ALKATHENE LAYING, ROOTRAKING,
FARM TRACKS, DAIRY LANES**



**ELEVATOR SCRAPER,
BOBCAT & ATTACHMENTS,
LANDSCAPING, TRENCHING AUGERS**

Supplies of Gravel Ex Waiau River

River Run Screened Grades Concrete Gravel Pea Gravel
Rejects for soak holes Crushed - AP30 & AP65
Peebles for Sheep and Cattle yards and calf sheds
Fines suitable for cow lane capping

**K J SUTHERLAND
GRAVELLING &
AGRICULTURAL CONTRACTOR
2475 OHAI-CLIFTON H/WAY
ORAWIA RD2 OTAUTAU 9682**

Ph 0274 367 934

**K.J. Sutherland
Contracting
Bobcat T190**

**With attachments: Landscape Rake,
Augers and Trencher**

**Suitable for all landscaping, shed and yard
maintenance**

Muck-spreader and tip trailer available



**PHONE KEVIN
027 367 934 / (03) 225 5716**

MILLARS

- PLUMBING
- GAS FITTING
- DRAINLAYING
- LICENSED BUILDER

Master Plumbers
f Ph 027 4340 705 or 03 225 8567



We specialise in:

**Resource consents
Farm environmental plans
Policy advice
DOC concessions
Landscape plans & assessment**

We take care of the paperwork,
so you can do what you do best!

Sonya: 027 5050 077
Rebecca: 027 4246 129
www.slwp.co.nz
Locally owned & operated



Agricultural Contractors servicing Western Southland and beyond.

BALAGE - SILAGE - GROUNDWORK - FEED TRADING
Nigel 021 226 6156 / fowlecontracting@gmail.com



Tim and Superior go the extra mile

Are you frustrated with the lack of service from your local fertiliser consultant, peddling the same advice year after year regardless of your production outcomes, environment and sustainability?

Give **Tim Adcock** of Superior Fertiliser Specialists a call. He will bring a whole new meaning to service and client/advisor relationships.

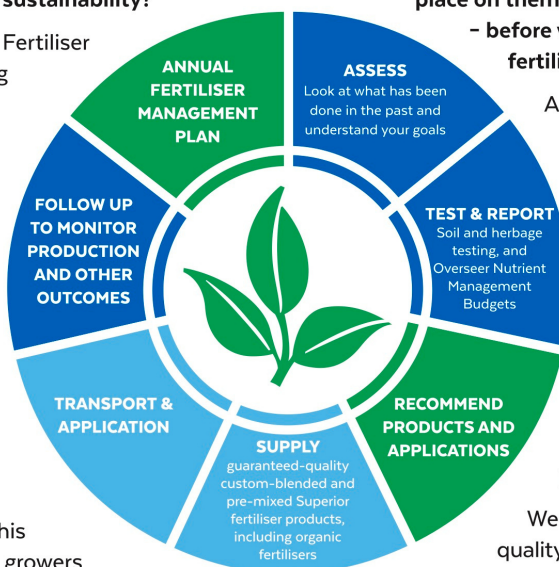
Tim is a key member of the highly skilled Superior team totally committed to helping you develop healthier, more productive soils and plants.

We form a specialist fertiliser company that provides high quality advice and products at competitive prices. We have been doing this for South Island farmers and growers for just on 20 years.

Superior promotes a total soil care package. First, we get to understand the make-up, nutrient status and health of your soils, the demands you are going to place on them, and your production goals – before we apply one kilogram of fertiliser.

A comprehensive regime of vigorous soil tests will be undertaken and the results will provide the basis of a Superior Fertiliser Management Plan customised for your unique situation. This will complement your farm's Environmental Plan and provide the blueprint for an ongoing annual fertiliser programme.

We then supply guaranteed-quality solid fertiliser for your pasture and crops, monitor production and other outcomes, and update your Plans as required.



It's free to talk so don't hesitate to give Tim a call.
Phone 021 418 224



Tim Adcock
Fertiliser Advisor
Otago/Southland
021 418 224
tim@superior.net.nz

 FERTILISER SPECIALISTS
SUPERIOR
www.superior.net.nz

TUATAPERE SERVICE STATION

20 ORAWIA ROAD
PHONE: 03 2266475

DIVING GEAR IN STOCK

MASKS, FINS, SNORKEL INDIVIDUAL AND SETS

BOOTS, HOODS, BELTS AND WEIGHTS

CATCH BAGS, TORCHES AND MASK CLEANER

FOR ALL YOUR MECHANICAL NEEDS

Car & 4WD WOF's

Trailer, Caravan & Motor bike WOF's

Servicing all vehicles

Light Engineering

New Tyres

Electrical Work

Scanning of most vehicles



HARDWARE WE STOCK

METRIC BOLTS & NUTS

IMPERIAL NUTS & BOLTS

GUTTER, DYNA & COACH BOLTS

TEK AND WOOD SCREWS

SELF TAPPING SCREWS

HINGES, BRACKETS, CATCHES



NZ TRANSPORT AGENCY
WAKA KOTAHI

WE CAN PROCESS ALL YOUR

REGISTRATIONS

ROAD USER CHARGES

CHANGE OF OWNERSHIPS

VEHICLE EXEMPTIONS

CANCELATION OF REGISTRATION

CHANGE OF HUBOMETERS

