



# WESTERN Wanderer

Tuatapere | Clifden | Orawia | Blackmount | Monowai | Colac Bay | Orepuki

Cover Photo Credit: Sent in by Walter T. Rat (aka Ratty)

Issue 240

At a glance ... what events are on this month? **DECEMBER 2021**

MONDAY	TUESDAY	WEDNESDAY	THURSDAY	FRIDAY	SATURDAY	SUNDAY
		1	2	3	4 Second Hand PopUp Shop TPC Main Rd 10-2pm	5 <b>Xmas-inspired Mini Photo Sessions</b> WTCC 3pm-5pm
6	7	8	9	10	11 Second Hand PopUp Shop TPC Main Rd 10-2pm	12 Western Southland Gun Club 10am Xmas Hamper Shoot Pukemaori Grounds  Clifden Community Christmas Party Suspension Bridge 4:30pm
13	14	15 <b>Last day of school</b> Tuatapere & Districts Promotions Inc Committee Meeting 7:30pm WTCC	16	17 <b>Tuatapere Community Food Drive 2021</b> 6:30pm	18 Second Hand PopUp Shop & Market Day 10-2pm TPC Main Rd	19
20	21	22	23 <b>Christmas Parade</b> Tuatapere Domain	24 Christmas Carol Service 7pm Waiau Valley Presbyterian Church	25 <b>Christmas Day</b>  Christmas Church Service 9:30am Waiau Valley Presbyterian Church	26 <b>Boxing Day</b>
27	28	29	30	31 New Years Eve	1 Second Hand PopUp Shop TPC Main Rd 10-2pm <b>Tuatapere New Years Sports Day</b> WS Gun Club New Years Day Shoot 10am	2
3	4	5	<b>JANUARY 20th</b> Notices, events, adverts etc in to the WW for <b>FEBRUARY</b> Issue			January 29th The Orepuki K 11am start Monkey Island

Special thanks to



**SEE INSIDE FOR MORE DETAILS!**  
Want your event here? Let us know at  
[yourwesternwanderer@gmail.com](mailto:yourwesternwanderer@gmail.com)

## COMMUNITY NOTICES & EVENTS

### HANDY PHONE NUMBERS

#### EMERGENCY

POLICE / FIRE / AMBULANCE: **111**

MEDICAL CENTRE: (03) 2266 123

TUATAPERE POLICE STATION:  
(03) 2269 020

TUATAPERE COMMUNITY WORKER:  
027 757 5983

HAUROKO VALLEY SCHOOL OFFICE:  
(03) 2266 753

WAI AU AREA SCHOOL OFFICE:  
(03) 2266 285

TUATAPERE CEMETERY TRUST:  
(03) 2266 065

CHAMBERS SERVICE STATION:  
(03) 2266 654

TUATAPERE SERVICE STATION:  
(03) 2266 475

TUATAPERE FOUR SQUARE:  
(03) 2266 898

TUATAPERE OUTDOORS & HARDWARE:  
(03) 2266 363



### Western Southland Gun Club Upcoming shoots

**Xmas Hamper 12th December  
10am start**

at the Pukemaori Grounds

**75 sporting Targets \$50.**

Eye & Ear protection compulsory &  
available for purchase at the club.  
Ammo available with Firearms license.  
Food available

**New Years Day Shoot Jan 1st 2022  
10am start**

at the Pukemaori Grounds.

**80 Targets \$50.**

Eye & Ear protection compulsory &  
available for purchase at the club.  
Ammo available with Firearms license.  
Food available

Your Western Wanderer Committee  
wishes all our readers and  
advertisers a warm and  
relaxing summer break.  
We're taking a break too!  
See you in February 2022!

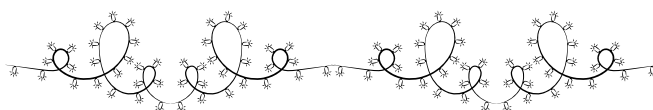


## Tuatapere Christmas Parade 2021

*John Munro, Organiser*

Gore, Riverton and Invercargill  
have already cancelled their  
Christmas parades this season  
and it is with much regret that  
we here in Tuatapere have had to err  
on the side of caution and follow suit with cancelling  
the Tuatapere Christmas Parade for 2021.

I am really sorry everyone. I was very much looking  
forward to another awesome parade and gathering  
this Christmas. However, next year our parade will be  
bigger and better than ever!



## Tuatapere Community Christmas Lunch on Christmas Day

*Keri Potter, Tuatapere Community Worker*

The Tuatapere Community Christmas Lunch  
will be held on Christmas Day **25th December 2021**  
from **12:30pm to 3pm** at **Tui Base Camp**.

The first 50 names to register for this event will be  
confirmed. If I do not have these names and  
confirmations for this event it will not go ahead.

I have applied for funding to cover the cost of a two-  
course meal at no cost to you. This will not however  
include drinks - you will purchase these yourself.

You need to register your name with me by the  
1st December 2021 for a place at the table.

Come on Tuatapere ... Let's do this.

Contact **Keri Potter** on **027 757 5983**



## The Clifden Community Christmas Party

**12 December 2021 from 4.30pm**

at the suspension bridge (if it is wet will be in the  
Clifden Hall).



Bring along your own BBQ food and refreshments  
and enjoy catching up with your community.

Everyone is welcome!

The big man in red is going to make an appearance,  
so bring along a named wee gift for the young ones  
if you like.

# TUATAPERE COMMUNITY FOOD DRIVE 2021

17 December at 6:30pm

We will be traveling around the Tuatapere township collecting non-perishable food items for our Community Worker to distribute to families over the Christmas period.

If you could please have these items clearly visible by your letter box or bring them out when you hear the bells of our local Emergency Services for us to collect.

We will have a space at our local Tuatapere Four Square Supermarket to place items in if you're not going to be home at this time. There is also a drop off point at Hauroko Valley Primary School (before the 15th December please).

**WE WOULD LIKE TO THANK YOU ALL &**

*Merry Christmas!*



## COMMUNITY NOTICES & EVENTS



# CHRISTMAS INSPIRED MINI PHOTO SESSIONS

WITH NICOLE WALLACE

PROUDLY SUPPORTED BY TUATAPERE TOY LIBRARY

15 MIN SESSIONS

3X DIGITAL FILES \$30

*Perfect for children & families*

To book your session contact  
Maria Egerton on 027 843 4691 or  
Nathalie Pahl 027 475 9075 or message the event page on FB

**WAIKATO TOWN & COUNTRY CLUB**

**SUN 5<sup>TH</sup> DEC 3PM-5PM**



# Christmas Carol Service

**WHERE:** Waiau Valley  
Presbyterian  
Church, Tuatapere

**DATE:** Friday 24 December

**TIME:** 7pm til about 9pm

Supper provided.  
Come along and hear  
the loveliest story in  
history AND ...

On **Saturday 25<sup>th</sup>** come  
and celebrate at  
**9:30am**, for half an hour,  
the birth of Jesus.



OREPUKI COMMUNITY PROMOTIONS  
PRESENTS

# THE OREPUKI K 2022

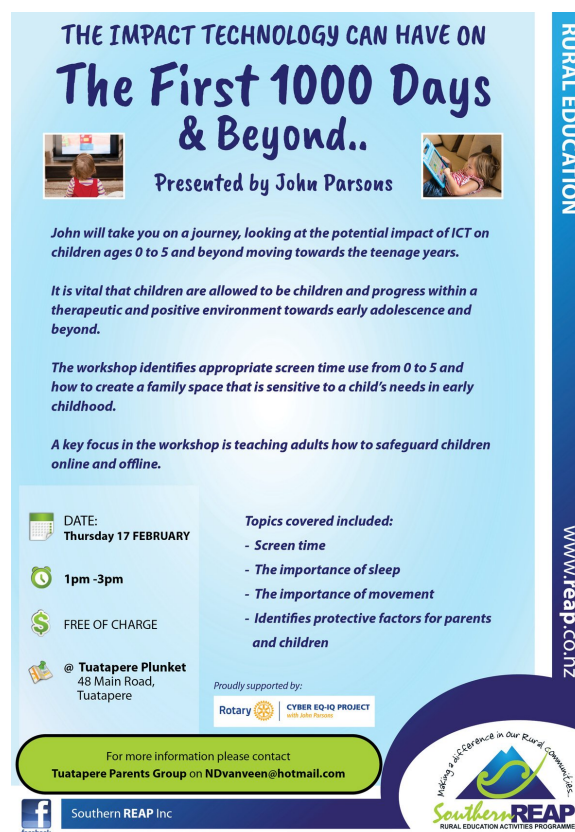
COMMUNITY FAMILY EVENT

**SATURDAY JANUARY 29<sup>TH</sup> / 11AM START  
MONKEY ISLAND BEACH**

- OREPUKI K - 1 KILOMETER FUN RUN/WALK
- BBQ
- KIDS BIG DIG
- SANDCASTLE BUILDING COMPETITION
- GAMES
- SPOT PRIZES

Event is weather permitting. Postponement date is Sunday January 30<sup>th</sup>.

CONTACT OREPUKIPROMOTIONS@GMAIL.COM WITH ANY QUESTIONS



**THE IMPACT TECHNOLOGY CAN HAVE ON  
The First 1000 Days  
& Beyond..**

**Presented by John Parsons**

John will take you on a journey, looking at the potential impact of ICT on children ages 0 to 5 and beyond moving towards the teenage years.

It is vital that children are allowed to be children and progress within a therapeutic and positive environment towards early adolescence and beyond.

The workshop identifies appropriate screen time use from 0 to 5 and how to create a family space that is sensitive to a child's needs in early childhood.

A key focus in the workshop is teaching adults how to safeguard children online and offline.

**DATE:**  
Thursday 17 FEBRUARY

**1pm - 3pm**

**FREE OF CHARGE**

@ Tuatapere Plunket  
48 Main Road,  
Tuatapere

**Topics covered included:**

- Screen time
- The importance of sleep
- The importance of movement
- Identifies protective factors for parents and children

Proudly supported by:  
Rotary CYBER EQ-HQ PROJECT

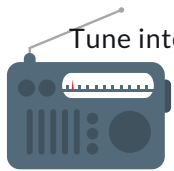
For more information please contact  
Tuatapere Parents Group on NDvanveen@hotmail.com

Southern REAP Inc.

**RURAL EDUCATION**

www.reap.co.nz

Making a difference in our Rural Communities  
**Southern REAP**  
RURAL EDUCATION ACTIVITIES PROGRAMME



Tune into Tuatapere's very own Radio Station

**88.2 FM - Tui FM!**

Hits of the 80's & 90's and today's current music!

## COMMUNITY NOTICEBOARD



### COACHES + MANAGERS NEEDED!

Waiau Star Rugby Club Senior Team are looking for expressions of interest from Coaches and/or Managers for the 2022 season.

We have a young, enthusiastic team, showing good signs with both development and dedication.

If you are interested, please contact:

**Blayne 027 631 7273** or

**Pete 027 520 2753**

### INTERESTED IN GENEALOGY?

Are there any like-minded people interested in belonging to a genealogy group here in Tuatapere, so we can learn and share ideas about starting family trees, researching, DNA etc. I thinking a meeting once a month perhaps, starting in the new year. Ancestry and MyHeritage have DNA kits on sale at the moment. Contact **Karen Barry** [alsobarky@gmail.com](mailto:alsobarky@gmail.com) or on FB Messenger

### YOGA CLASSES IN OREPUKI STARTING JANUARY 2022!

The first 8-week term of 1-hour classes will run from mid-Jan to March, on Wednesday evenings (5:30-6:30, and 6:45-7:45), for \$120 (ie 8 classes at \$15 each). I teach vinyasa flow yoga and I can adapt classes to suit beginners and those who want a gentler practice. If you're interested, please get in touch at [inigunnyyoga@gmail.com](mailto:inigunnyyoga@gmail.com)

### SALVATION ARMY FAMILY STORE TRUCK

The Salvation Army Family Store Truck will come out and collect large amounts of your pre-loved furniture & other household items. This service is free. Please call the store to organise your visit on **03 214 5380**



### TUATAPERE HEALTH & GIFT SHOP

- Riverton Pharmacy

CHANGE TO SHOP HOURS

As of Wednesday 29 September opening time will be 12.00pm.

1st prescription drop from 12.30pm daily.

If we can help in any other way, please contact Riverton Pharmacy **(03) 234 8515**



### COUNTRY CORNER CRAFTS

Come in and browse and see what we have to offer. Hats, scarves, children's knitwear, cards, jewellery, woodware, sewing, jams, pickles, sauces, etc.

Tuatapere souvenirs "On Natures Edge" logo are always available.

Is anyone interested in joining to sell their crafts? You are more than welcome to contact us.

Want to volunteer your time & work in the Craft Centre - let us know! It's a great way to meet people! If you wish to view the shop and it is closed, please ring the ladies below to open it for you.

**Louise Greber (03) 668 6001** or

**Lyla Sherriff (03) 226 6187**

### FOR SALE

Farmquip 3way sheep weigh crate with load bars and indicator \$3000 + gst

One petrol tank 1000l \$300

One diesel tank on wheels 400l has filter \$300

Phone **Rohan 021 332 153**

### FOR SALE

2 Wooden single beds with mattress & bedding.

If they can be any use to you, please make an offer - just need them gone.

Also, Needle Work Lamp in excellent order - \$50

Phone Isobel **(03) 226 6065**

## COMMUNITY NOTICEBOARD

### TUATAPERE PRESBYTERIAN CHURCH POP UP SECOND-HAND SHOP

Held **10am to 2pm every Saturday** of the month in  
The Tuatapere Presbyterian Church Hall, Main Road,  
Tuatapere.

Miscellaneous from 50c	Books/DVDs \$1
Children's Books 5 for \$1	Puzzles \$2
Clothing from \$2.	

When available we have fresh eggs and vegetables.

***Last day for the year is the 18<sup>th</sup> December.  
Re opening for next year on the 8<sup>th</sup> January 2022.***

For the collection of donated goods or a drop off point  
phone or text **Carol Diack 021 110 1835**

### TUATAPERE PRESBYTERIAN CHURCH MARKET DAY

The Market Day is held from **10am to 2pm every  
3<sup>rd</sup> Saturday of the month** in the Tuatapere Presbyterian  
Church Hall, Main Road, Tuatapere.

Stallholders selling greeting cards, toys, activity books,  
wheat bags, essential oils, bags, face masks, knitting,  
preserves, jams, plants, and more.  
When available we have fresh eggs and vegetables.

***Market Day for December is the 18<sup>th</sup>.  
Market Day for January is the 15<sup>th</sup>.***

Enjoy a cup of tea or coffee and something to eat.

To book a table or any queries please phone or text  
**Carol Diack 021 110 1835**

**Get your car washed, dried and windows cleaned  
Price arranged on request!**

Contact: Rex Hibbs Flat 1/26 Orawia Rd, Tuatapere

### ADDRESS NUMBER PLAQUES

Address number plaques can now be  
ordered through the Tuatapere Community Worker  
Support Trust.

These can be clearly seen anywhere day or night.  
The number plaques are for properties. Each number  
must be specific and correct for this purpose.  
To order please call **Keri Potter 027 757 5983**



## NEED A JP?



The following Justices  
are available  
by appointment:

#### Tuatapere

Keri Potter 027 526 3137  
Donald Egerton 027 432 5407

#### Te Waewae Bay

Shirley Whyte 027 504 5220

#### Blackmount

Nicky Baker 0276435880

### WESTERN SOUTHLAND WOOLCRAFT GROUP

Spinning, Felt, Weaving, Knitting,  
Crochet. Other crafts welcome!  
1st Wednesday of the month.  
10am - 3pm. BYO Lunch.  
For details please contact:  
**Helen Todd 022 378 9743**



### TUATAPERE & DISTRICTS LIONS CLUB PROJECT



#### SUPER DIRT

Super dirt bags are now  
weighed so more in each bag!  
**\$8 per bag - ready for your garden!**

Super dirt can be collected from:  
Cracks Yard, Grove Burn Road,  
in the mornings Monday to Friday.  
Weekends by arrangement.

Delivery by arrangement - (but not  
guaranteed)

Phone Trevor (03) 225 5864 or  
Stephen (03) 226 6817



### TUATAPERE COMMUNITY WORKER

Room 5 Medical Centre  
69A Orawia Road

Monday - Thursday 10am to 3pm  
Keri Potter 027 757 5983  
Email: [tcworker@xtra.co.nz](mailto:tcworker@xtra.co.nz)



## WAI AU MEMORIAL LIBRARY



### Christmas Eve 24th December

Morning Session

10.00am-11.30am OPEN

Afternoon Session

2.30pm-4.00pm OPEN

Evening Session

7.00pm-8.00pm CLOSED

### New Year's Eve 31st December

All library sessions CLOSED

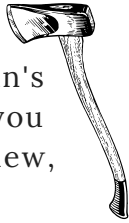
### The Library will re-open

7th January, 2022

The Wi-Fi is available free to all library members. Just ask one of our friendly volunteers to help you set up your device.



## TUATAPER E BUSHMAN'S MUSEUM



Orawia Road. If the Bushman's Museum is not open when you have visitors who wish to view, you can contact:

Lindsay Faulkner (03) 226 6650 to arrange a suitable time.

## TUATAPER E MAINLY MUSIC

A pre-school music and movement-based playgroup.

Mondays during the school term at the Tuatapere Presbyterian Church Hall.

Music session starts at 10am followed by a time of morning tea and play. \$2 per family.

Morning tea is provided for all.

New families welcome!

Find us on Facebook:

"Tuatapere Mainly Music"



For more information contact Heidi 022 315 3326

ESSENTIAL OILS 100% PURE GIFTS OF NATURE  
Florals Trees Plants Herbs Spices Citrus

To Learn More, phone or text your local Wellness Advocate  
Carol Erskine Papatotara 0274 599 654



## COMMUNITY NOTICEBOARD

### TUATAPER E VALLEY SCOUTS



Unfortunately due to lack of leaders and children willing to take up the challenge of scouts, along with the ongoing Covid uncertainty, at this stage Scouts, Cubs and Keas **will no longer be held in Tuatapere**. We will reevaluate the situation at the end of Term 2 next year. Any inquiries, please contact:  
Quinton (group Leader) (03) 226 6969

### TUATAPER E PLAYGROUP

23B Orawia Road. Friday Playgroup 9am - 12pm

All parents and children welcome!

Children's morning tea is a packed lunchbox from home at Playgroup (as opposed to a shared morning tea).

Any queries please contact:

Gemma Bennett 022 040 3368 Alice Harris 027 270 0363

### CLIFDEN PLAYGROUP

45 Otahu Eastern Bush Road.

Every Wednesday (during School Term) 9:30am - 12:30pm.

All mothers and children welcome.

Bring packed lunchbox for your child's morning tea.

Any queries to: Sarah 027 699 5234

### WAI AU VALLEY PRESBYTERIAN CHURCH

Services for all ages! Every Sunday at 10.30am.

Tuatapere Presbyterian Church, Main Street, Tuatapere.

All welcome to join us.

### SOUTHLAND COMMUNITY LAW CENTRE

Free legal information and advice for the community of Southland.

2nd Floor, Cue Building, 33 Don Street, Invercargill.

Phone (03) 214 3180

Freephone: 0800 550 800 (outside Invercargill city only)



### TUATAPER E ENVELOPES

Envelopes printed with the "Tuatapere on Nature's Edge"

Logo can be purchased at Country Corner Craft Shop

1A Orawia Road, Tuatapere. Cost \$3.00 per 10



## COMMUNITY NOTICEBOARD

### DO YOU HAVE ANY SPARE TIME?

Tuatapere & Districts Promotions Inc is looking for a keen volunteer to put up and/or change the flags on our community Flagtrax.

It takes approximately 2 minutes per flag and we'll give you some awesome training plus a handy hook pole to help do the job!

If you're interested, please message/call **Paula McKenzie** on **027 434 6777**

---

### PLEASE HELP!

Can you please search your homes for Waiau Area School hoodies & track suits.

We have been trying to kit out our students for various events but we are missing so many that we can't! We really need them back as soon as possible. Thanks!

---



### TUATAPERE TOY LIBRARY

Tuatapere Toy Library has been a toy swap/hire service provided to the young families of Tuatapere and surrounding since 1989. The purpose is to create opportunities for the little people of our community to have accessibility to toys. A small contribution of an annual membership allows families to join the group and have access to the toys.

For more information or questions please text or ring **Nathalie Pahl** on **027 4759 075**

---



### SENIOR CITIZENS

Senior Citizens is a group of over 60s that meet every **Friday afternoon at 1pm** at the rooms behind the RSA Hall.

We are always looking for new members so if you would like a fun afternoon playing bowls, cards or just catching up with friends, come and join the group.

Contact: **Olive Bennett** Ph **(03) 2266 477**

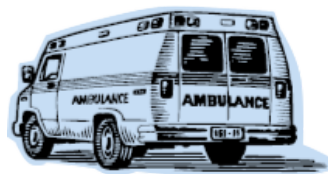
### TUATAPERE AMBULANCE

#### Did YOU Know?

The Tuatapere Ambulance is a funded service by the Tuatapere Lions Club, for the residents of Tuatapere & Districts.

Should you receive an account for this service from St John, please forward it immediately to:

**The Treasurer**  
**Tuatapere Lions Club**  
**PO Box 47**  
**Tuatapere**



Sometimes we experience difficulty in receiving the invoices for YOUR trip - so PLEASE do forward them on to us.

Thank you!

**Tuatapere Lions Club Charitable Trust**  
**Ambulance Committee**

### WESTERN SOUTHLAND HEALTH SHUTTLE

The Western Southland Health Shuttle Service travels from Otautau, Ohai, Nightcaps, Tuatapere, Riverton - covering all of Western Southland. We also connect with the Invercargill-Dunedin shuttle.

The Western Southland Health Shuttle operates Monday - Friday (excluding Public Holidays).

Bookings are required by 3pm the day prior to transport.

**Ph: 0800 103 046 to book.**

Please book as soon as you receive your appointment.

### TUATAPERE VOLUNTEER FIRE BRIGADE

We're on the lookout for members to join this rewarding organization. We are looking for persons who are, ideally, available throughout the day.

If you think that you would like to try this (sometimes lifelong) commitment, then please feel free to come and try it!

We train on Tuesday nights at 7:30pm during daylight saving and 7pm through the winter months.

We look forward to meeting with you.



## COMMUNITY NOTICEBOARD

### DR ERIC ELDER BURSARY FUND

*Raewyn Minty, Secretary*

Applications for the above Bursary opened on the 1st November 2021.

The Dr. Elder Bursary is valued at \$2000.00 and is open to all persons wishing to undertake Tertiary Studies for 2022.

Application forms are available from:  
**The Southland District Council Office, Otautau**  
**Phone 0800 732 732**

Completed application forms to be posted to:  
**Mrs. Raewyn Minty**  
**88 Wairio-Wreys Bush Rd**  
**RD 1 Otautau 9689**

Applications close: **January 10th 2022.**

Any enquiries please phone **(03) 225 8628**

Thank you.

### ELDER DRIVE CLOSURE

*Southland District Council*



Our contractors will soon begin replacing the water main that runs along Elder Drive, Tuatapere, from the water treatment plant in the Tuatapere Scenic Reserve to State Highway 99.

The water main runs down the centre of Elder Drive, which is very narrow, and as a result the road will need to be closed from 30 November 2021 until 26 January 2022. This means the Tuatapere Scenic Reserve and boat ramp will be inaccessible to vehicles while this work is being done.

However, we will reopen Elder Drive over the Christmas-New Year period, from 23 December until 9 January 2022. Full access to the reserve and boat ramp will be reinstated at this busy time, but users are asked to be mindful that parts of the road will be gravel and some will be sealed.

The Tuatapere domain walking track will remain open throughout the entire project.

This work is part of the government-funded three waters stimulus programme and involves replacing the old asbestos cement pipe with polyethylene pipe. The pipe is critical for Tuatapere's drinking water supply and for firefighting purposes and we need to ensure the line is fit for purpose for the next 100 years.

We appreciate your co-operation while this important work is being done.

## Tuatapere Freight

LOCALLY OWNED & OPERATED

RUNS MONDAY TO FRIDAY  
WEEKENDS BY ARRANGEMENT

**Phone Brandon**  
**027 436 4360**



## Shearing

*magazine*

*Des Williams (editor)*

Tel 07 839 2891 : Mob 0274 833 465

Email : [shearingmag@xtra.co.nz](mailto:shearingmag@xtra.co.nz)

*Member NZ Guild of Agricultural Journalists and Communicators (Inc)*

**LAST SIDE PUBLISHING LTD**  
PO Box 102, Hamilton 3240, New Zealand

## RAW FARM HOMEKILL

**Wayne & Rachel Saunders**  
Qualified Butcher

**027 457 6350**

[rawfarming@yahoo.co.nz](mailto:rawfarming@yahoo.co.nz)

82 Clifden Highway  
Tuatapere



Cut up the way you want

Beef

Pork

Sheep

Venison

Other game meats

Traditional Smallgoods



# Hump Ridge Great Walk Project

## December News

Kia ora Western Wanderer readers

Thank you to everyone that joined the project team in Tuatapere on Monday 18 October to discuss the exciting project of transforming the Tuatapere Hump Ridge Track into NZ's next Great Walk.

It was fabulous to meet with the community, invited guests, and Southland District Mayor Tong to share our plans and progress as well as answer your questions and hear your feedback.

It was fabulous to meet with the community, invited guests, and Southland District Mayor Tong to share our plans and progress as well as answer your questions and hear your feedback.

This project is a collaboration between quite a few different entities and groups. We had representatives from the project governance group, Oraka-Aparima Rūnaka, Hump Ridge Track Charitable Trust, Rowallan Alton Inc., Southland District Council, Waitutu Trust, among others. It was neat having you all there. Our thanks to the Waiau Town & Country Club for hosting us. It's a great venue.

The power point presentation and the newsletter can be seen on our project webpage: [www.doc.govt.nz/our-work/hump-ridge-great-walk-project](http://www.doc.govt.nz/our-work/hump-ridge-great-walk-project). We will keep this webpage updated as the project progresses.

As the team shared, the main objective of this project is to deliver a new Great Walk by upgrading the track surface, infrastructure, carpark, interpretation, and storytelling package.

The core benefit for your community will be the economic gain that this project will bring to the region - through additional employment, business opportunities and the increased tourism/visitor spend as people want to walk a Great Walk.

The project team are keen to hear from any Tuatapere area locals with civil works skills and experience that might be interested in undertaking subcontracted works for this project. People who operate cartage and/or small machinery companies and owner operators should register their interest by sending us an email with your name, contact details and a bit about yourself. Contact the project team via [HumpRidgeGWP@doc.govt.nz](mailto:HumpRidgeGWP@doc.govt.nz)

You can also email us anytime with questions, concerns or to ask to be added to the project newsletter distribution list.

In closing, thank you to everyone who has been part of the project in 2021. We look forward to working with you all in 2022 as we plan on getting shovels and feet on the ground, doing the project mahi. We wish you a festive and happy holiday season. Ngā mihi nui.

## Want to know more about the Hump Ridge Great Walk Project?

**Project Webpage:** Get all the facts and stay informed via

[www.doc.govt.nz/hump-ridge-great-walk-project](http://www.doc.govt.nz/hump-ridge-great-walk-project)

**Project Email:** Contact the project team at any time to ask questions or to be added to the distribution list to receive these newsletters:

[HumpRidgeGWP@doc.govt.nz](mailto:HumpRidgeGWP@doc.govt.nz)

**Media Enquires:** please direct to [media@doc.govt.nz](mailto:media@doc.govt.nz)

## Want your local photograph to be featured on a postcard?

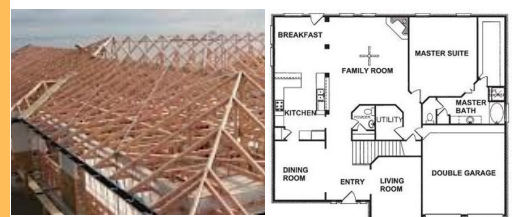


Send your photographs to [yourwesternwanderer@gmail.com](mailto:yourwesternwanderer@gmail.com)

## PAUL ANDERSON BUILDER

AVAILABLE FOR ALL YOUR  
BUILDING REQUIREMENTS.

NO JOB TOO SMALL.  
COMPETITIVE RATES.  
REFERENCES AVAILABLE!



**Mobile: 027 890 3602**  
[thetakis@outlook.com](mailto:thetakis@outlook.com)

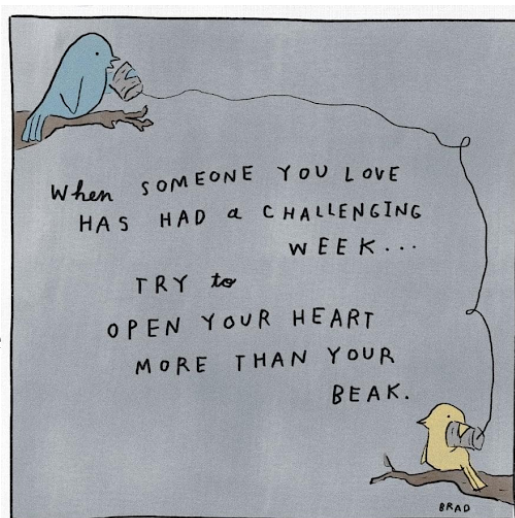
# Waiau Health Trust



As we are getting closer to the end of the year, we just want to take a moment to remind you of your strength and resilience. As if 2020 wasn't challenging enough, along came 2021 to test us even further. Sometimes simply getting through is not easy, so take a moment to give yourself some credit for that.

Sometimes the best thing we can do for each other is simply check in and be there to listen. It is so easy to jump into 'solution mode' when most of the time people just want to be heard.

Depression and anxiety are so common that it's highly likely that at some point you'll know someone who might be experiencing it. It might be someone in your whānau, a team-mate or someone from your community.



People with depression and anxiety are more likely to get through with help and support (tautoko) than on their own.

Being depressed and anxious can be a really lonely experience. Sometimes the most important thing is having supportive people around or checking in. Having a coffee, watching television, phoning or texting to say 'Hi' can help a lot. When you're feeling down, knowing that people are thinking of you can really lift your spirits.

Often when people are feeling bad they don't want to go out and do anything. Everything feels just too hard. So encouraging them to do something with you is a great support. It could be something small like watching funny video clips, listening to music, going for a walk or window-shopping. Think about something you both like to do.

**Need to talk? Free call or text 1737 any time**

We encourage you to reach out and ask for help if you need it, if you would like an appointment please phone **03 226 6123** to book with one of our staff today.



## MR STEEL

TUATAPERE

**PH: 027 276 6816**

MALCOLM

**For all your engineering,  
steel fabrication and repair needs!**

*Lynley McKerrow*

**Celebrant**  
Funeral and Marriage

P: 0272 974 767  
E: nanamac60@xtra.co.nz

*with care - with love - with dignity*

**DRAKE**  
PLUMBING & DRAINLAYING LTD

C: 0274 247 102  
T: 03 225 8652  
E: admin@drakeplumbing.co.nz

**KIERAN DRAKE**  
Certifying Plumber  
& Drainlayer

## FORDE SHEARING LIMITED

Available for all new and existing clients

For all your shearing and  
crutching requirements

Please phone Darin or Julie Forde

(03) 235 8853  
027 229 7760



**BEN MCMASTER  
BUILDING**

Ph: 027 202 7955  
benmcmaster@live.com

- Licensed Building Practitioner
- Sheds, renovations & new homes
- Based in Western Southland

*You dream it, we'll build it*

# Waiau Town & Country Club

**Meals (homemade goodness)  
available Thurs, Fri, Sat & Sun  
from 4pm to 9pm.**

Family Friendly | Happy to cater for dietary requirements.  
Please pre-book for groups of 8 or more.

## Club Opening Hours:

**Mon - Thurs 4pm till close.**

**Fri 3pm - close.**

**Sat Noon - close.**

**Sun 3pm - close.**

**Book now for functions/birthdays etc**

We can cater! Call to discuss options.

**03 22 66 489**

**Book your Xmas Function NOW!**

Places are filling up FAST!

## What's on at the Club:

### **\*COME & MEET OUR NEW MANAGER DHRUV!**

Pop in and say hello, stay for a drink and/or a meal too if you want!

**\*CLUB BOWLS** – 5th December - 10am

**\*STEAK NIGHT** – every Thursday night  
only \$25 for a delicious steak meal.

### **\* MEMBERS DRAW & RAFFLES**

drawn every Friday night! Approx. 7.30-8.30pm.  
Come in for a bite to eat and a drink, who knows  
you might be the lucky one to win \$\$!

**Keep an eye on our Facebook Page for  
more details on upcoming events**

**Annual membership/subs were due 1st July  
PLEASE PAY NOW!**

*Annual membership is \$50 or \$30 for pensioners.  
Pay & collect at the club or pay online  
and we'll post your card out.*

*Everyone welcome to become a member, just pop in  
or call the club.*

Phone: **03 22 66 489** | Address: 41 King St Tuatapere

Email: [waiautcc@gmail.com](mailto:waiautcc@gmail.com) | [Facebook: facebook.com/waiautcc](https://www.facebook.com/waiautcc)  
| Courtesy Van Available |

**We look forward to seeing you!**



**WAIAU AREA SCHOOL**

Year 1-13 Education

Live to LEARN, LEARN to Live

## Wild Wellington Adventures!

What started off as a simple discussion soon turned into a reality!

Early in 2021 the Senior Head Students and Prefects were chatting about how it would be good to finish their academic secondary schooling with some type of excursion. Many places were mentioned (including overseas) but realising the current circumstances and



restrictions of travel Wellington came to the top of the list. Now came the tricky part, how ...

Sitting with Mr Bennett and Miss Quinn the students found out the process of organising a school trip. Tekoa took a lead role in the organising this trip by completing the research on activities and experiences, developing a draft itinerary and a financial breakdown. Once all information was collated it was given to Mr Bennett and Miss Quinn to read over, with their approval Holly and Sam presented to proposal to the Waiau Area School Board of Trustees. Thankfully the BoT approved the event and even more spectacularly approved to funding a large portion of the event in recognition of the student's commitment to learning/ education.

A meeting was held with the Yr 12 and 13 students and a priority list was established. Every student got to research and recommend something they would like to do while in Wellington and the reigns were handed over to Miss Quinn and Mr Bennett to organise.



With Covis-19 lurking around the planning process was a lot more difficult than it normally would be. After months of planning and replanning due to cancellations we finally had confirmed dates and activities. One of the least exciting things was knowing we were going to leave school at 3.30am but the excitement soon outweighed the lack of sleep. Arriving in the big smoke for us small town folk was a bit of a shock, but we were ready to see what this city had to offer.

We spent the first day exploring our inner-city area as well as going to Te Papa. We were all eager to see the Gallipoli: The Scale of our War exhibition in Te Papa and we were not left disappointed, it was a moving exhibition that we would all highly recommend others to see. During the next few days, we visited art galleries, got our photo taken at the Beehive (Covid stopped our tour), went to Weta workshop and saw a baby chimpanzee born at the Wellington Zoo. Something we were all a little dubious about was going to the theatre as it was the production was rather confronting but we had the incredible offer of meeting the crew after to chat about the messages they had shared. Putting ourselves out there to do something a little different didn't seem as challenging as the themes shared by the actors. It also generated a lot of discussion for us as a group. One of the most exciting things for all of us is the confidence it has given two of our peers. One is now going to move to Wellington and the other has now decided to study in Christchurch.



Creating new memories, spending one last time together as a group, experiencing new things will forever be the last memories we have of our time at Waiau Area School. Thank you to the BoT, Miss Quinn, Mr Bennett, Tekoa and the Yr 12 and 13's for making this experience so memorable.

# Alex Reid CONTRACTING

**Paddock Cultivation from  
Ploughing to Sowing  
Dry Hire available  
Aerating  
Direct Drilling  
Ridging  
Mulching**



## **Dairy Lane Maintenance**

Tip Trailers • Vibrating Roller • 2 Tip Trucks

## **Sheep Conveyor**

Drenching, Vaccination etc • 3 way draft

## **Large Skid Steer for calf shed cleaning, loading Muck Spreaders etc**

4 Muck Spreaders • 16,000 litre Slurry Tanker  
Pond Stirrer • Umbilical Slurry System



**Rural Contractors**  
NEW ZEALAND

**PHONE ALEX  
0212775308 CELL  
03 2255377 HOME**

# TUATAPER HANDYMAN SERVICES

**Barry Bennett**  
**(03) 226 6730**

- **Painting - Interior/Exterior**
- **Waterblasting**
- **Spider & Fly Spraying**
- **General Repair Work**
- **Lawnmowing**
- **Weed Spraying**



## IN & AROUND THE COMMUNITY

# Tuatapere Community Worker Support Trust



Kia ora Everyone.

My name is Keri Potter and I am your local community support worker. Most of you will know who I am, understand what my role involves, and bits about the Trust. This spiel is designed to help you understand more about my role and hopefully encourage you to find ways to support the Trust.

Currently, I am employed for 20 hours per week. My role involves:

- Free and confidential referral service for residents within the boundaries of Orepuki, Colac Bay, Blackmount, Merrivale, Orawia, Bluecliffs and Tuatapere
- Work with Tuatapere Promotions - eg; welcoming new families and residents to the area.
- Working in with community groups such as the local schools to provide additional support for families and residents in need.
- Attending meetings within the boundary to get to know and understand the community needs.
- Being available at the Medical Centre (Monday - Thursday 10am-3pm) for anyone within the boundary.
- Help people with work and income applications, filling out forms for people, supporting mental health, being available to listen, making referrals, providing food parcels (limited) and financial/life pathway planning/referrals. There is more!
- Working alongside the Community Support Trust members in the best interests of Tuatapere and its surrounding areas.

The Community Trust applies for grants every year to ensure that Tuatapere has a community worker/service and also has the resources. The Trust relies on voluntary members to govern this community service and ensure it is sustainable.



**JOHN TIMPANY** Craftsman

022 046 1402

7 Settlement Road  
Papatotara  
Tuatapere, Southland

Furniture

Native Timber & Timeless Design  
Signs Carved & Shapes Shaped  
Small Structures Erected

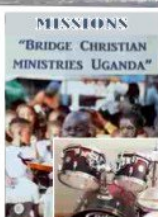
**SOUTHLIFE**  
**Community**  
**CHURCH**

*Steve & Sharon*  
are Pastors

and we are an area church



We believe in Community and endeavour to show this the best we can by the way we care and serve!



MISSIONS  
"BRIDGE CHRISTIAN  
MINISTRIES UGANDA"



We warmly invite you to come along to one of our services.  
It would be great to see you

**Sunday Service**  
10am Truro St, Orepuki



The Trust is always looking for more members. If you are interested in getting involved, attending a meeting or wanting to find out more - please make contact with Jazz Quinn (secretary).

#### Further information about the Trust:

- The Trust is a not for profit, community driven Trust, which was formed in 1999.
- The Trust consists of a chairperson, treasurer and secretary along with other Trust members.
- The Trust qualifies for free legal assistance and as a result Denise Lormans (Manager, Southland Community Law Centre) will be working closely with the Trust to bring it's documentation up to the 21st century, and to grow governance capacity and understanding.
- In the new year, the Trust will be working with external support to reinvigorate its strategic plan and goals. We will be seeking your feedback and ideas.
- Our next meeting is on **Monday 21st February 2022**, in the Waiau Area School library starting at **7:30pm**. At this meeting, we'll be working with Denise on our constitution and documentation. You are welcome to join us and even throw your name into the ring to be on the Trust or even be available to help us behind the scenes!

On Christmas Day, a group of us are having lunch at Tui Base. We are looking forward to this lunch and celebrating the year together.

As your community worker, I am very excited to join forces with community members to help raise mental health awareness and to look at more ways of supporting one another in our supportive community here in Tuatapere. There are so many good things happening.

Your caring Community Support Worker

Keri Potter

[tcworker@extra.co.nz](mailto:tcworker@extra.co.nz)

027 757 5983



**INDEPENDENT MIDWIFE**  
**ISOBEL DEVERY**  
*Caring for women throughout  
Pregnancy, Birth till six weeks  
Post Natal.*  
*Choices for place of birth,  
Home or Winton Birthing Units  
or Kew Hospital.*  
*Free pregnancy tests  
available on request.*  
**Phone: (03) 22668822  
027 2267020**  
©Peetara, Ethnographica®

#### Sewing and Mending Services Available

Experienced machinist offering fast, reliable service with very reasonable rates.

I will mend/make anything from zip replacements to curtain making - just ask!

Free quotes and pick-up delivery service within Tuatapere.



Contact **Deborah**

**(03) 226 6783 or 021 0305 667**



  
**DAGWOOD DAGGING**  
*Available now to all new and existing  
customers for all your crutching  
requirements.*  
*3 Stand or Single trailer available  
7 days a week, wet or dry.*  
  
*No job too big or too small.  
Competitive rates*  
**Jeff Chambers**  
027 3042 241



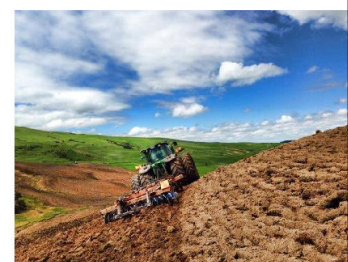
**Rabco Ag Ltd** – 021 362 766 – [admin@rabco.nz](mailto:admin@rabco.nz)  
Agricultural Contracting Specialists - Western Southland



**Full silage  
& baling  
service**



**Cultivation – including Direct Drill & Precision Drill**



**Effluent – Excavators - Hedgetrimming**



## WAI AU HEALTH TRUST – December 2021

Please make sure you contact the Medical Centre well ahead of time for any repeat medications required during the holiday period.

### Christmas/New Year's Clinic Hours:

24/12	9:00am – 12:00 pm
29/12	9:00am – 12:30pm & 1:30pm - 4:30pm
30/12	9:00am – 12:30pm & 1:30pm - 4:30pm
31/12	9:00 am – 12:00 pm
5/1	Re-open and back to normal hours 9:00am – 12:30pm & 1:30pm – 4:30pm

All days we are closed are covered by the On Call Roster, call **(03) 226 6123** and you will be triaged appropriately.

### COVID-19 VACCINATION:

We are continuing our vaccinations for Covid-19, and these are being done daily at the Medical Centre. Booking is easy and can be done by phoning **0800 282 926** or by going online [www.bookmyvaccine.covid19.health.nz](http://www.bookmyvaccine.covid19.health.nz)

If your work commitments make it difficult for you to come in during our appointment times, please contact our reception team.

Some people aged 12 and over who are severely immunocompromised are eligible to receive a third primary dose of the Pfizer COVID-19 vaccine, and we recommend they have this additional dose to get their best possible protection. The third primary dose should be given at least 8 weeks after the second dose. A prescription must be provided by a GP or Specialist before people who are severely immunocompromised can access a third primary dose. If you believe you qualify, we recommend scheduling an appointment with your usual health care provider. You might be able to receive the third primary dose at the same time as your consultation.

**Waiau Health Trust team wish you a safe & happy Christmas & New Years.**

Jo Sanford, Manager

**Cell: 027 295 0429**



**Waiau Health Trust**  
69a Orawia Road, Tuatapere  
Approved Registered ACC Provider  
Monday to Friday  
9:00am – 4:30pm  
Ph.: 2266123

*Practitioner Hours*  
Amanda McCracken (NP) – every  
weekday

*Sheryl Eden (NP –every Monday &  
Tuesday)*

**Physiotherapist**  
Tuesdays & Thursdays  
Phone for an appointment

*Podiatrist*  
Visits regularly –  
Phone for an appointment

*Warts/Minor Skin Lesions*  
Liquid Nitrogen treatment available  
Phone for an appointment

*Homebased Maternity Care*  
We are offering this service  
in the patient's home.  
Please contact Jo Sanford  
on 2266123 for enquiries.

*Day Activities Programme for  
the Elderly*  
Every Tuesday & Wednesday  
Please phone for further information.

*District Nursing*  
Available as required by referral

# Your Local Graphic Designer & Printing Specialist

## McMAHON design studio

9 Cumnock Street, Wallacetown

P: 03 235 8967 M: 027 242 8109

f E: mcmahondesign@outlook.com



Wedding, Birthday, Anniversary, Fund-raiser, Christmas Party, Awards Ceremony, Sporting Event, Celebration

*Planning  
your next  
special event?*

### Big or small!

Let us make it easy with  
an Events Package  
custom designed  
for you!

Included in every package is a  
30 minute initial consult where  
we will discuss your project, goals, theme and budget  
to come up with a tailored graphic design and printing package  
perfectly suited to you, and your event.

#### This could include:

- An emblem/logo for the event styled to your theme -
- An advertising pack for print and/or online to promote your event -
- Save the Date Cards & Invitations with custom printed envelopes -
- Tickets, Raffle Tickets/Boards, Entry Forms, Flyers, Posters, Banners -
- Seating Charts, Stickers/Seals, Gift Bags/Boxes, Cake Toppers -
- Name Tags, Table Cards, Guest Books, Photo Boards, Certificates -
- Thank You Cards and much more...

Place an order with us for your customised Events Package  
before **THURSDAY 31<sup>ST</sup> MARCH 2022** and get **15% OFF**  
the total value of your order

\*Applicable only to orders totalling over \$200.00 excluding GST and delivery.

*We offer a wide range of digital printing  
and graphic design solutions.*

- |   |                                      |
|---|--------------------------------------|
| LOGO/EMBLEM DESIGN including full branding packages | CALENDARS - BOOKLETS - REPORTS       |
| ADVERTISING & SIGNAGE DESIGN                        | NEWSLETTERS - MAGAZINES - CATALOGUES |
| SOCIAL MEDIA GRAPHICS & EMAIL SIGNATURES            | ALL OFFICE STATIONERY                |
| PHOTO EDITING & CUSTOM ART                          | PERSONALISED STATIONERY & CARDS      |
| CERTIFICATES - PRIZE CARDS - PROGRAMMES             | PRESENTATION & PROMOTIONAL ITEMS     |
| WEDDING & EVENT STATIONERY                          | <b>AND MUCH MORE...</b>              |

Get in touch with us today for your free consultation and quote!

## PROPERTIES WANTED!

Contemplating selling? You might  
be surprised by what your property  
could fetch on today's market

Contact Julie today for a free appraisal and  
to discuss how you could take advantage of  
this bouyant property market



**Julie Guise**

021 256 4164

julieguise@sre.co.nz

**SOUTHLAND REAL ESTATE LTD**  
Licensed under The Real Estate Agents Act 2008

**SOUTHLAND  
REAL ESTATE LTD**  
Licensed under The Real Estate Agents Act 2008

MREINZ

For all your fencing requirements

## WESTERN FENCING

SHEEP | DAIRY | DEER

Call BEVAN 0277 413 213

# ADS

## ANDERSON DRAINAGE SERVICES

*Keeping Southland Flowing*

- ✓ Tile Cleaning
- ✓ Culvert Cleaning
- ✓ Septic Tank Blockages
- ✓ Domestic Blockages
- ✓ Rural Drain Blockages

Fraser Anderson  
021 162 0210  
fraseranderson1@gmail.com  
Forest Hill, Southland  
Follow us on Facebook  
*Call us today!*

by George Charlton (Contin ... from November's Issue)

## Lived for Pipe Band

Reference has already been made to the Tuatapere Pipe Band. Hugh Erskine was the father of Tuatapere and he was, in particular, the father of the pipe band. To him it was a life interest; he served it, he financed it and he gave it his whole hearted support on occasions and he even put up a cheque to buy the tartan. In recognition of this the band decided to adopt the Erskine tartan and the Erskine tartan it wears to this day. Once when Hugh Erskine was paying a visit to Invercargill he met another well-known man of the same name. Introducing himself he said his name and said "Your name is Erskine too and the Tuatapere Band is wearing the Erskine kilt. Now, what about a donation to the band?" He came away with a cheque for five pounds.

The band was started on July 11th 1919 with Gavin Dixon as drum-major and it has attended every big function in the township. There were times when the membership fell alarmingly but it always managed to carry on and today it is bigger and a more enthusiastic band than it has ever been.

Tuatapere is no longer a hole in the bush. It is a township with a future that abounds in promise. The bush has retreated to the uttermost boundaries and the bulldozer and the excavator are adding new acres to the farms every year, and the power saws and high leads are bringing the logs out of the bush in a steady stream."

Your Western Wanderer Committee would like to extend a huge *Thank You!* to George Charlton for his special local history feature contribution to the WW.

Are you interested in being a regular or semi-regular contributor of content for the Western Wanderer? We are always looking for people who would like to provide a short article/piece of reading for each monthly issue. It doesn't have to be every month - we can be flexible! Perhaps you'd just like to contribute a piece for one issue. We'd be interested in that too! Email us at [yourwesternwanderer@gmail.com](mailto:yourwesternwanderer@gmail.com)

or drop a note in the mailbox at 18 Orawia Rd, Tuatapere

## WESTERN ELECTRICAL

2008 LTD

Electrical Solutions

Domestic | Industrial | Commercial

**Quality Service at Competitive Prices**

- New Builds, Rewiring & Alterations
- Dairy Shed, Farm & Industrial Maintenance
- Hotwater Element Replacement
- A/H Call Out Service Provided



**Ph 03 225 8974 / 027 439 3787**

**Fax 03 225 8973**

## MOUNTAINS EDGE CABINS MONOWAI



Hunting, Fishing, Mountain Biking,  
Kayaking & Tramping  
Cabin Accommodation

**12 Cabins**  
**Double and Single Available**  
**\$35.00 per person per night**

Eftpos available

Full Kitchen Facilities, Showers, Toilets, Playground  
& the Tennis Courts right across the road!

We are 'pet friendly'

[www.mountainsedgecabins.com](http://www.mountainsedgecabins.com)  
Email: [mountainsedgecabins@gmail.com](mailto:mountainsedgecabins@gmail.com)

75 Turbine Drive, Monowai. Ph. 03 225 8267

# WaterForce

**Irrigation Systems**  
**Pumping & Filtration**  
**Effluent Dispersal**  
**Water Management**

20 Winton Hedgehope Highway, Winton

03 236 9805 [www.waterforce.co.nz](http://www.waterforce.co.nz)

**0800 4 FORCE (4 36723)**

*Shirley Whyte*  
Your local real estate specialist living & working in Western Southland  
now also an Accredited Justice of the Peace.



for:  
Friendly service, reliability, sound local knowledge  
in Western Southland, Te Anau & Stewart Island  
All enquires welcome - all calls answered



**Harcourts**  M 027 504 52200 O 03 214 4080  
E shirley@harcourtsinv.co.nz W www.harcourts.co.nz

Holmwood Real Estate Ltd Licensed Agent REAA 2008

**Looking for a babysitter or  
someone to mow your lawns?**

**Well, you're in luck!**

---

**I'M A RELIABLE TEENAGER  
LOOKING FOR SOME WORK**

**Contact Jay on 027 242 2890**

**Specialising in**  
Dairy Conversions  
Rural Fencing  
Post & Rail



**H Gill Fencing,**  
Eastern Bush  
Phone 021 225 5489  
After Hours 03 225 5488  
Email hamish@gillfencing.co.nz



**accelerate**  
PHYSIOTHERAPY

office@acceleratephysio.co.nz  
60 Deveron Street, Invercargill  
(off street parking)  
**0800 291 475**

Accelerate is a gentle form of exercise, effective in providing long term solutions  
after an injury, especially low back pain.



We have interests in:

- > Spinal/Back & neck injuries
- > Sporting Injuries
- > Running, Cycling & Multisport
- > Men & Women's Pelvic Health
- > Acupuncture
- > Balance & Dizziness
- > Workplace Injuries / Ergonomic Onsite
- > Work Evaluations & Educations
- > Pilates

Joel Barnes  
BPHTY, BExSci

Andrea Robertson  
BPHTY, PG Cert ACUP

Andrea Murray  
Dip PHYT Dip M.T.

Find us on  **facebook**

[www.acceleratephysio.co.nz](http://www.acceleratephysio.co.nz) 

venturers leaders climbers detectives kayakers cimd

# Hauroko VALLEY PRIMARY SCHOOL



**Kia ora, Bula Bula,  
Nihao  
Western Wanderer  
Readers**



We're just about at the end of our time together with only 20 school days left for 2021. Our learners are humming as we continue to focus on learning programmes. Term 4 lends itself to a wide variety of experiences for all of our tamariki.

Our journey as a Write That Essay school is superbly rewarding as we see our children grow in confidence with their writing. All are extending their knowledge of sentence styles and learning how to write a variety of paragraphs. Did you know - we are the only school in Southland on this professional learning journey - how exciting is that?!

The Tuatapere Sale Yard proceeds have enabled us to support the following developments initiated by our Year 6-8 students. Their inquiry has been localised to HVP for our people and place. The learning has been invaluable in terms of the relevant contexts for learning with the incorporation of financial literacy. Thanks so much for enabling us to include:

- mini golf extension and upgraded course;
- upgrade to our playhut to create a cafe space for our younger learners;
- native tree planting to provide shade while creating a sanctuary for students and to re-attract native birds;
- seating/decking around trees to provide additional seating and performance opportunities;
- marked out cricket pitch for our enthusiastic cricketers.

Thanks to Syd Slee Charitable Trust for supporting Hauroko Valley Primary School with our Health and Physical Education. All students are swimming daily across a week which provides opportunities for incredible growth of skill development within a short space of time. Thanks to Brittney of Johnston Waters for providing swimming coaching for all stages and abilities of our children as they

learn to swim or swim to learn.

Thanks to the Tracks Committee and a few local identities for guiding our Year 7&8 learners along the Tui Trails and providing coverage of local history, as well as publications for promotions.

Our Year 5&6 students are heading into Borland Lodge, Monowai for Camp as part of our Education Outside of The Classroom Programme. The Theme for our 2021 Camp is Challenge - The first challenge is the Clifden Caves where Adventure Southland guide our students through the incredible limestone cave systems, view stalactites and learn about the life cycle of glow worms. Borland Lodge is a special spot where we bring the curriculum alive through ABL (adventure based learning), abseiling, archery, bush craft, kayaking, rock climbing, camp concert and more!

Our Year 8 leavers have planned an action-packed BIG day out with a range of activities involving challenge, camaraderie and most likely some comedy! To conclude their day out, they have organised a Graduation Dinner - a first for HVP! This year we farewell five Year 8 boys with 80% of the group having been part of Hauroko Valley Primary School since they were 5. Parents have been invited to attend for speeches, dinner and their prize giving ceremony. We wish you well in your future endeavours and look forward to sharing in your continued learning journeys.

As always we thank our community for ensuring we are well resourced with facilities and more importantly people who step in to provide opportunities that ensure our students have multiple educational moments. **Nga mihi nui.**

Julia Waikato  
Tumuaki/Principal



"Always Our Best/Tonu to tatou pai".

**Save the date! Saturday 12th March for the  
2022 Blackmount Trail Ride**

This is Hauroko Valley Primary School's major fundraiser, all funds directly benefit all children.



Join us for a fun filled family day out with trails for all stages and levels across incredibly beautiful landscapes.



questioners teachers kaitiaki nurturers questioners teachers kaitiaki nurturers



## Registered **ELECTRICIAN**

For all electrical work  
*No job to small*  
A/Hours service available


Jay Brownlee  
8 Carlyle Street, Tuatapere 9620  
A/H 03 226 6673  
Mob 027 4965 863  
sparkieintuatapere@gmail.com

For all your Accounting and Tax Solutions

Ask for Janice or Trevor England

 **03 2266110**

Aparima Accounting Ltd  
57 Main Road Tuatapere

  
**CANTERBURY CARS**  
**4WD Specialists**

For all your vehicle requirements

Cars, utes, 4WDs, vans

Finance available

Contact: Murray Dowling  
**027 556 2655**

Visit our website  
[www.canterburycars4x4.co.nz](http://www.canterburycars4x4.co.nz)

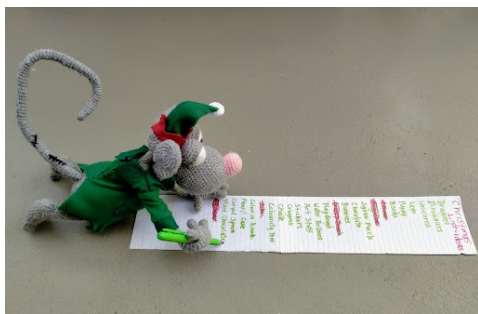
## Ratty Says ...

Waiau Memorial Library



I've had a very busy year. I got to learn all sorts of new things, how to build a robot, bake scones, knit, sew and crochet. I learned how to carve a spoon. That was sooo much fun. It's my most prized possession, after my Teddy bear. I also had a go at flax weaving. The hat I made is very cool but I keep getting diamond patterns on my head whenever I wear it in the sun. I don't know why. Now that I've learned all this new stuff I've decided that I'm going to put some of my new skills to good use. Why? Because it's Christmas time and I want to give my friends presents! WooHoo!!

I've been saving up all my pocket money. That's right, I get pocket money, because I'm such a good helper in the library. I want to do something nice for all my friends that come and visit me at the library and borrow books (and return them). I've saved up enough money to buy some presents and the rest I'm going to make, all by myself. Well, I'm going to TRY to make them all by myself. Some things might end up a bit wonky. I've been making up a list of all the things I want to make and buy. It's a very long list, I might have to cross a few things off.



I'm going to wrap up all of my presents and put them in a bag so my friends can have a lucky dip when they come and visit me in the library during December. I'm so excited, I can hardly wait.

This is going to be sooooo much fun!

## Tui Base Camp



**Open from 7am every day!**

Tui Base Camp wishes everyone

**merry CHRISTMAS** **Season's greetings**

**Come in and check out our specials**



**Book now for your xmas functions**

We now have a mini-van!

Contact us to organise a night out at Tui Base Camp (pick-up and drop-off) with some of your neighbours.

Contact James on 027 837 3521 for enquiries.

**For all of your dine in and takeaway requirements including:**

In-house roasted Amore Coffee

In-house made pies, sausage rolls, cheese rolls

Range of breakfast options

Packed lunches

Catering

**Phone: (03) 226 6250**

[www.tuibasecamp.co.nz](http://www.tuibasecamp.co.nz)



**Keep an eye on our Facebook Page for our latest updates!**



Heineken  
12pk bottles

**\$24.99**  
EACH

Smirnoff Ice Red  
(incl zero) 5% 250ml  
12pk cans

**\$19.99**  
EACH

Tui Bourbon; Tui Vodka Soda  
7% cans all 12pks

**\$19.99**  
EACH

Jim Beam & Cola  
Canadian Club  
(incl zero) 4.8% 10pk cans

**\$19.99**  
EACH

Cruiser  
5% 12pk bottle range

**\$22.99**  
EACH

Major Major  
10pk can range

**\$22.99**  
EACH

Smirnoff Seltzers  
5% 250ml 12pk cans

**\$21.99**

Smirnoff Ice  
Double Black; Guarana  
& Flavoured (incl zero)  
7% 12pk can range

**\$24.99**  
EACH

Woodstock  
7% 250ml cans

**\$32.99**  
EACH

Cody's 7% 18pk cans

**\$29.99**  
EACH

Speights or Summit  
24pk bottles

**\$34.99**  
EACH

Long White  
15pk bottle range

**\$38.99**  
EACH

Canterbury  
Cream  
750ml

**\$25.00**  
FOR TWO

Malibu 1L

Kahlua (incl Salted  
Caramel) 1L

Jameson  
all 700ml

Teachers  
Russian  
Standard  
1L

Southern Comfort 1L

Finlandia 1L

St Remy 700ml

Chateau  
Canadian Club  
(incl spiced)  
All 1L

Absolut 1L

Bailey's 1L

Jim Beam  
1.125L

Corona  
12pk bottles

Chivas 12 700ml

Jameson Black  
Barrel 700ml

JB Double Oak 1L

Appleton  
Estate  
(Signature  
Blend) 1L

Jagermeister  
700ml

Absolut 1L

**\$39.99**  
EACH

Bailey's 1L

**\$43.99**  
EACH

Jim Beam  
1.125L

**\$49.99**  
EACH

Corona  
12pk bottles

**\$26.99**  
EACH

Chivas 12 700ml

**\$52.99**  
EACH

Jameson Black  
Barrel 700ml

**\$70.00**  
FOR TWO

First in service  
**THIRSTY**  
LIQUOR  
First in value

DRINK RESPONSIBLY

Your Nearest Thirsty Liquor Store is @  
Tui Base Camp - Tuatapere

Promotion period between 1/12/2021 to 31/12/2021. While stocks last. Promotion only available at participating stores. Please contact your local store to confirm whether they are participating in the promotion and check the pricing in-store prior to purchase. Online pricing will vary.

23

# BARRETT *Ag* LTD

FULL SILAGE AND BALEAGE SERVICE



**ALL CULTIVATION**  
INCLUDING DIRECT DRILL  
AND STRIP TILLING - PRECISION PLANTING



**EXCAVATION**  
20 TONNE DIGGER/ GRADER  
D85 BULLDOZER/ ROLLER  
TIP TRUCKS AND TRAILERS



Barrett Ag Ltd  
Ph: Kahu- 027 5183 448  
E: [barretttagltd@gmail.com](mailto:barretttagltd@gmail.com)  
FB: Barrett Ag





\* 13 Tonne Digger \* 5.5 Tonne Digger \* 2.7 Tonne Digger- dry hire or operated  
 \* Tip Truck \* Bob Cat \* Augers \* Post Driver \* Tree Saw & Hedge Trimmer  
 \* Tree Trimming \* Post Driving \* Fencing \* Cleaning of Wintering Sheds \* Site Clearance \* Cartage \* Gravelling \* Lane Maintenance \* General Earthworks

For all enquiries and bookings please contact Lance or Alice Harris  
 Lance: 027 304 3714  
 Alice: 027 270 0363  
 Email: lanceharris533@gmail.com  
 Check us out on facebook- Harry's Machines

### CHAINSAW SHARPENING

All chainsaw chain sizes precisely sharpened and rakers taken down accordingly, guaranteed results  
**Chain only \$10 Taken Off & Refitted \$13**  
 Please phone **027 308 2501**

### WANTED TO BUY

Possum Fur, Hard deer,  
 Antler, Deer Velvet.  
 Phone Leith 027 496 3721

## WAIAU VALLEY SHEARING LTD



**Simon de Vries**  
**Julie Heaps**  
**027 840 9867**  
**03 226 6212**



*Looking for that special salad to have with barbecued meat. My family loves this roasted potato salad either in the summer or winter.*

## Warm Roasted Potato Salad

### Ingredients

- 800 grams red, waxy potatoes
- 2 red onions
- 6 cloves of garlic, skin on
- 3 tablespoons olive oil
- Sea salt and freshly ground pepper

### Dressing

- 4 tablespoons walnuts
- Roasted garlic, from the potatoes
- ½ cup mayonnaise
- 1 tablespoon olive oil
- 1 tablespoon dijon mustard
- 2 tablespoons freshly grated parmesan cheese - plus extra for garnish
- 2 tablespoons finely chopped parsley
- 2-3 teaspoons lemon juice or white wine vinegar



### Method

Preheat oven to 200°C

Cut the potatoes into large chunks and slice each onion into 6 wedges. Toss the potatoes, onions and garlic with olive oil. Place in a single layer on a large baking tray. Season with salt and pepper.

**Dressing:** Squeeze the flesh from the roasted garlic into a bowl. Finely chop 2 tablespoons of the walnuts and combine with the remaining ingredients. Adding lemon juice to taste. Season.

**To Serve:** Toss the warm potatoes and onions with enough dressing to coat, transfer to a serving bowl. Scatter with the remaining walnuts, grated parmesan and freshly ground pepper. Enjoy!



George Harpur, SDC Councillor, Waiau Aparima Ward

Hi and welcome to all for this my Xmas report for 2021.

On the local front the water upgrade is progressing well, and I would like to thank the contractors for the great restoration work they have done on various sites.

The Domain Road (Elder Drive), is scheduled to be the place of the next section of the upgrade and as you should have all read, it will be closed for a period during late December through till mid to late January. However it will be open for traffic over the Xmas period and arrangements have been made for access for other industrial activities that may be required in the day to day running of the domain. However this will not be for any non-related activities unless there be an emergency. We apologize for the inconvenience, but upgrades are part of the essential activities that must be done.

Road sealing and upgrades are taking place over the wider region so please take care, obey the speed limits, and keep everybody safe on the roads.

Cheers to all and have a safe Xmas and a great new Year.



### November's Rebus Puzzle Answers

1. Adding insult to injury
2. A bit under the weather
3. The ball is in your court
4. Let the cat out of the bag
5. Beat around the bush
6. No one to blame
7. Yellow belly
8. Take from the rich and give to the poor
9. Three blind mice
10. A green eyed monster

1. Injury + Insult	2. Weather Bit
3. yourballcourt	4. B Cat 2 ga
5. Bush	6. 1. 2. Blame 3. Blame
7. belly	8. ri poorch
9. mce mce mce	10. <b>MONSTER</b>

**Phone: Anita Green 027 506 2418**  
Tuesday 9-5pm, Thursday 10-8pm, Friday 10-5pm - Appointments are encouraged.

### CHAMBERS REPAIR SERVICE

**45 Half Mile Road, Tuatapere**

**Ph: (03) 226 6654**

- 24 hour Self Service Fuel
- Full Mechanical Workshop
- NZ Post Centre
- Agents for Wide Span Garage



Bring your lawnmower in for a service now & beat the rush

**MTA Gift Vouchers Available**



PASTURE METER READING THAT'S QUICKER AND EASIER, WITH AT THE GATE REPORTS

- Specialist in quality pasture meter reading with advanced sensor technology
- Provide 200 measurements per second or 18,500 readings over a single 500m pass
- Provides a fully integrated electronic support system
- Provides a secure web-based storage of information with easy access
- Prompt generated feed wedges for rapid decision making and seasonal comparisons
- Generate reports at the gate, supplying valuable pasture cover data and comparable results every time
- Improve heath & increase animal hydration
- Enhance production & improve water quality
- Reduce bacterial/algae contamination of trough water

**CLEAN TROUGH WATER MEANS IMPROVED LIVESTOCK HEALTH**

Now 2 bikes available for pasture metering



Brett George • P 027 351 3408   
E [platemetterservices@gmail.com](mailto:platemetterservices@gmail.com)

**For Landscaping,  
Land Maintenance,  
Gravel Supply & Cartage**

**GRADES OF CRUSED & SCREENED GRAVELS,  
ALKATHENE LAYING, ROOTRAKING,  
FARM TRACKS, DAIRY LANES**



**ELEVATOR SCRAPER,  
BOBCAT & ATTACHMENTS,  
LANDSCAPING, TRENCHING AUGERS**

**Supplies of Gravel Ex Waiau River**

River Run Screened Grades Concrete Gravel Pea Gravel  
Rejects for soak holes Crushed - AP30 & AP65  
Peebles for Sheep and Cattle yards and calf sheds  
Fines suitable for cow lane capping

**K J SUTHERLAND  
GRAVELLING &  
AGRICULTURAL CONTRACTOR  
2475 OHAI-CLIFTON H/WAY  
ORAWIA RD2 OTAUTAU 9682**

**Ph 0274 367 934**

**K.J. Sutherland  
Contracting  
Bobcat T190**

**With attachments: Landscape Rake,  
Augers and Trencher**

**Suitable for all landscaping, shed and yard  
maintenance**

**Muck-spreader and tip trailer available**



**PHONE KEVIN  
027 367 934 / (03) 225 5716**

**MILLARS**

- PLUMBING
- GAS FITTING
- DRAINLAYING
- LICENSED BUILDER

Master Plumbers  
f Ph 027 4340 705 or 03 225 8567



We specialise in:

**Resource consents  
Farm environmental plans  
Policy advice  
DOC concessions  
Landscape plans & assessment**

We take care of the paperwork,  
so you can do what you do best!

Sonya: 027 5050 077  
Rebecca: 027 4246 129  
www.slwp.co.nz  
Locally owned & operated

## TUATAPERE OUTDOORS & HARDWARE

For all your

Gardening tools, lawn care, garden hoses, insect and disease sprays, potting and compost.

We have those building requirements for that weekend job with a good selection of silicone, nails, screws and bolts.

New fishing rods and reels, fishing lures, good selection of soft bait, fishing nets, flounder and eel nets.



Good selection of giftware.

Come in, check out what we have.

### Contact:

Judy **027 225 8192**

Paul **027 890 3602**

Shop **(03) 226 6363**

## SPECIAL FEATURE! STUDENT WRITING

*The purpose of this special feature is to highlight student writers in our community and to give them an authentic audience. Although this piece was originally written as speech for Oral Language, it has been slightly adapted (with permission) for reading.*

## What's That Piece of Plastic?

What's that piece of plastic? That's not good for environment. Let's pick it up. It's so easy to pick up a single piece of rubbish! Ladies and Gentlemen, today I'm going to tell you about New Zealand's pollution. Have you ever wanted to save the world's waters? Now you can, that's why I'm here today!

The first point I'm here to discuss today is our fish. The population of fish is getting smaller and smaller. Yes, our fish. Is anyone thinking about our fish? Our fish are dying because of one microscopic bit of plastic. Plastic can simply harm or even kill a fish. What will happen if we keep doing this? Fishermen will have nothing on their rods but rubbish. Did you know that more than 1,000,000 fish are dying because of our actions? So as I said before, stop sitting there and do something about it!

Ahh New Zealand's waters look so clean and fun to play in. But wait! What's this rubbish? It looks like New Zealand's waters don't look clean after all. We can fix this by working together and stop dumping rubbish in our waters. Would you like to swim in rubbish? Well I wouldn't. Think about it - instead of swimming in clean swimming pools, we could swim in clean rivers, lakes and oceans. So as I said, don't just sit there - we need to do something about pollution! Us kids have the power, we are the future. Did you know that lots of people clean our waters in NZ? More than 100 people clean our waters not because they have to, but because they want to. They care for us and our water animals.

Last but not least, lots of people clean our waters and then we pollute it again. If you were at the river and found a piece of rubbish would you leave it or pick it up? Once again, don't just sit there, we need to do something about it!

Dairy farming has increased in New Zealand and early on lots of rivers were badly polluted. Thankfully now the farmers have mostly fixed it.

## Painting & Handyman Services

Experienced Painter

I can help with all sorts of odd jobs too!

Gardening  
Lawn mowing  
Tree & Hedge Trimming  
General labouring



Phone **Luke Wikstrom 027 2773 925**



# 027 252 7933

- ☒ Renovations
- ☒ Extensions
- ☒ New Builds
- ☒ Sheds/Farm buildings
- ☒ Decks
- ☒ Pre-purchase house Inspections

*Call us for any building requirements*

Ph 027 252 7933 email: aaroncbltd@gmail.com

Another form of plastic rubbish is bale wrap. Wouldn't it be cool if we could create a bale wrap that cows can eat!

So Ladies and Gentlemen, there you have three amazing reasons why we should stop polluting our waters and land. First, our fish. Second, New Zealand doesn't look clean and finally, we all need to take responsibility for our beautiful country Aotearoa.

Next time you go to the beach, the river, the ocean or the lake and find a piece of rubbish, please don't leave it there. Pick it up. Now it's time for me to go clean our waters. See you next time. Good bye.

*Lyela Armstrong-Williams, Year 6 student  
2021 Oral Language Speech (Adapted)*



#### IN & AROUND THE COMMUNITY

### Tuatapere Community Garden

*Isobel Green*

Well another Christmas is nearly here. Many thanks to everyone who has helped keep things going in the Tuatapere Community Garden, especially Quinton Donald and Dave Fletcher for the great job they have done.

It would be really nice to see some more helpers down at our community garden, so if you see the need, please come on in and pull out some weeds!



# Royal Bush

## TRANSPORT LTD

### CONTACT US TODAY

**Phone 03 221 7192**

**Fax 03 221 7194**

- **Excavators for general farmwork**
- **Laser guided drainage**
- **Gorse mulching & land clearing**
- **Lane maintenance**
- **Conversions**
- **Effluent Ponds**
- **Demolition**
- **20 tonne bulldozer, roller, grader**
- **Drain ploughing & alkathene laying**





**Agricultural Contractors servicing Western Southland and beyond.**

**BALAGE - SILAGE - GROUNDWORK - FEED TRADING**  
**Nigel 021 226 6156 / [fowlecontracting@gmail.com](mailto:fowlecontracting@gmail.com)**



## Tim and Superior go the extra mile

Are you frustrated with the lack of service from your local fertiliser consultant, peddling the same advice year after year regardless of your production outcomes, environment and sustainability?

Give **Tim Adcock** of Superior Fertiliser Specialists a call. He will bring a whole new meaning to service and client/advisor relationships.

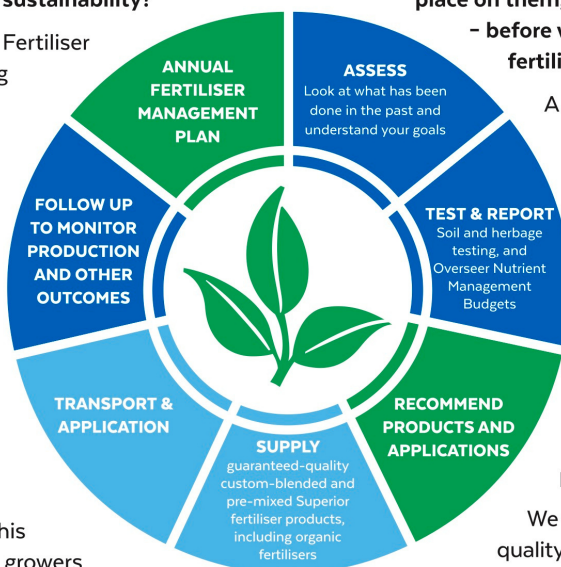
Tim is a key member of the highly skilled Superior team totally committed to helping you develop healthier, more productive soils and plants.

We form a specialist fertiliser company that provides high quality advice and products at competitive prices. We have been doing this for South Island farmers and growers for just on 20 years.

Superior promotes a total soil care package. First, we get to understand the make-up, nutrient status and health of your soils, the demands you are going to place on them, and your production goals – before we apply one kilogram of fertiliser.

A comprehensive regime of vigorous soil tests will be undertaken and the results will provide the basis of a Superior Fertiliser Management Plan customised for your unique situation. This will complement your farm's Environmental Plan and provide the blueprint for an ongoing annual fertiliser programme.

We then supply guaranteed-quality solid fertiliser for your pasture and crops, monitor production and other outcomes, and update your Plans as required.



It's free to talk so don't hesitate to give Tim a call.  
Phone 021 418 224



**Tim Adcock**  
Fertiliser Advisor  
Otago/Southland  
021 418 224  
tim@superior.net.nz

 FERTILISER SPECIALISTS  
**SUPERIOR**  
[www.superior.net.nz](http://www.superior.net.nz)

## TUATAPERE SERVICE STATION

20 ORAWIA ROAD

PHONE: 03 2266475

### XMAS GIFT IDEAS

Rod & reel combos  
Outdoor clothing  
Victorinox knives  
Car cleaning products  
MTA Gift Vouchers



NZ TRANSPORT AGENCY  
WAKA KOTAHİ

**WE CAN PROCESS ALL YOUR  
REGISTRATIONS  
ROAD USER CHARGES  
CHANGE OF OWNERSHIPS  
VEHICLE EXEMPTIONS  
CANCELATION OF REGISTRATION  
CHANGE OF HUBOMETERS**

### XMAS HOURS

**Friday 24<sup>th</sup> 8.00am to 5.00pm**

**Saturday 25<sup>th</sup> to Tuesday 28<sup>th</sup> – Closed**

**Wednesday 29<sup>th</sup> to Friday 31<sup>st</sup> 9.00am to  
3.00pm**

**Saturday 1<sup>st</sup> to Tuesday 4<sup>th</sup> – Closed**

**Wednesday 5<sup>th</sup> – Back to normal**



**WISHING ALL OUR CLIENTS AND CUSTOMERS**

**A VERY MERRY  
CHRISTMAS  
and Happy New Year!**