



WESTERN Wanderer

Tuatapere | Clifden | Orawia | Blackmount | Monowai | Colac Bay | Orepuki

Cover Photo Credit: Nina Smith - Whitebaiting at Dusk on the Waiau

Issue 239

At a glance ... what events are on this month? **NOVEMBER 2021**

MONDAY	TUESDAY	WEDNESDAY	THURSDAY	FRIDAY	SATURDAY	SUNDAY
1	2	3 Tuatapere RSA and Tuatapere RSA Memorial Bursary Trust AGMs 7:30pm RSA Rooms	4	5 Guy Fawkes Bonfire & Fireworks Night at the WTCC plus Bouncy Castle for the kids!	6 Second Hand PopUp Shop TPC Main Rd 10-2pm Tuatapere Highland Piping & Dancing Society Competitions RSA Hall	7
8	9	10	11	12	13 Second Hand PopUp Shop TPC Main Rd 10-2pm Xmas-inspired Mini Photo Sessions WTCC 12pm-5pm Village Garage Sale Monowai Village	14 Western Southland Gun Club Hunting & Fishing 100 Target Shoot 9.00am Pukemaori Grounds
15	16	17 Tuatapere & Districts Promotions Inc Committee Meeting 7:30pm WTCC	18 Tuatapere Playgroup Quiz Night Tui Base Camp 7pm Tuatapere Golf Club Inc AGM 7pm	19	20 Second Hand PopUp Shop & Market Day 10-2pm TPC Main Rd Notices, events, adverts etc in to the WW for Dec. Issue	21
22	23	24	25	26	27 Second Hand PopUp Shop TPC Main Rd 10-2pm	28
29	30	1	2	3	4 Second Hand PopUp Shop TPC Main Rd 10-2pm	5 Xmas-inspired Mini Photo Sessions WTCC 3pm-5pm
6	7	8	9	10	11 Second Hand PopUp Shop TPC Main Rd 10-2pm	12 Western Southland Gun Club Xmas Hamper Shoot 10.00am Pukemaori Grounds

Special thanks to



for their support with the printing

SEE INSIDE FOR MORE DETAILS!
Want your event here? Let us know at
yourwesternwanderer@gmail.com

COMMUNITY NOTICES & EVENTS

HANDY PHONE NUMBERS

EMERGENCY

POLICE / FIRE / AMBULANCE: **111**

MEDICAL CENTRE: (03) 2266 123

TUATAPERE POLICE STATION:
(03) 2269 020

TUATAPERE COMMUNITY WORKER:
027 757 5983

HAUROKO VALLEY SCHOOL OFFICE:
(03) 2266 753

WAI AU AREA SCHOOL OFFICE:
(03) 2266 285

TUATAPERE CEMETERY TRUST:
(03) 2266 065

CHAMBERS SERVICE STATION:
(03) 2266 654

TUATAPERE SERVICE STATION:
(03) 2266 475

TUATAPERE FOUR SQUARE:
(03) 2266 898

TUATAPERE OUTDOORS & HARDWARE:
(03) 2266 363

Tuatapere Christmas Parade 2021

John Munro, Organiser

Get your thinking caps on for designing your float for the Christmas Parade which will be held on **Thursday the 23 December** again in the evening.

Decorate your bike is back on again!

We are looking for

- people to run the chocolate wheel as a fundraiser;
- someone to provide some music at the venue; also
- who is doing the sausage sizzle this year?

For the first time we are holding the parade in the domain this year. This means we don't have to fill out (and pay thousands of dollars for) a traffic management plan!

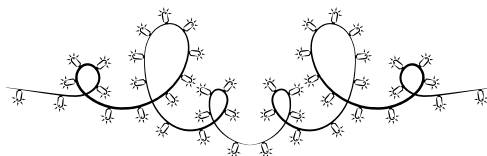
All floats, trucks, tractors, cars, motorcycles and ANYthing else will gather in the black space of road along side the half mile road along from DT Kings yard, then make their way down Elder drive into the Domain where they will do an entire loop and then weather permitting we will all park up in rows inside the domain out in front of the Pavillion.

So come on everyone! Last year's parade was massive and it is getting bigger and better every year! Start thinking about your next awesome float! School floats, Nurses, Scouts, Medical Centre, 4 Square, Hump Ridge Track, Tui Base Camp, Last Light Lodge ... come on guys ...

The challenge is ON!

All enquiries to

John Munro **03 226 6341** or **027 412 2925**



DO YOU HAVE ANY SPARE TIME?

Tuatapere & Districts Promotions Inc is looking for a keen volunteer to put up and/or change the flags on our community Flagtrax.

It takes approximately 2 minutes per flag and we'll give you some awesome training plus a handy hook pole to help do the job! If you're interested, please message/call

Paula McKenzie on 027 434 6777

SAVE THE DATE!

Out West Tui

TRYathlon

2021 Out West Tui TRYathlon
CANCELLED

due to the uncertainties around
COVID. We'll be back Oct 2022!

a ...-school
... entries
... with the most entries!

Tuatapere Community Pool
Orawia Rd, TUATAPERE



For more information check out our facebook page OUT WEST TUI TRYathlon,
email OutWestTuiTryathlon@gmail.com or call in to the Tuatapere4Square
to pick up an entry form and information.

Tuatapere Community Pool Fundraiser



CHRISTMAS INSPIRED MINI PHOTO SESSIONS

WITH NICOLE WALLACE

PROUDLY SUPPORTED BY TUATAPERE TOY LIBRARY

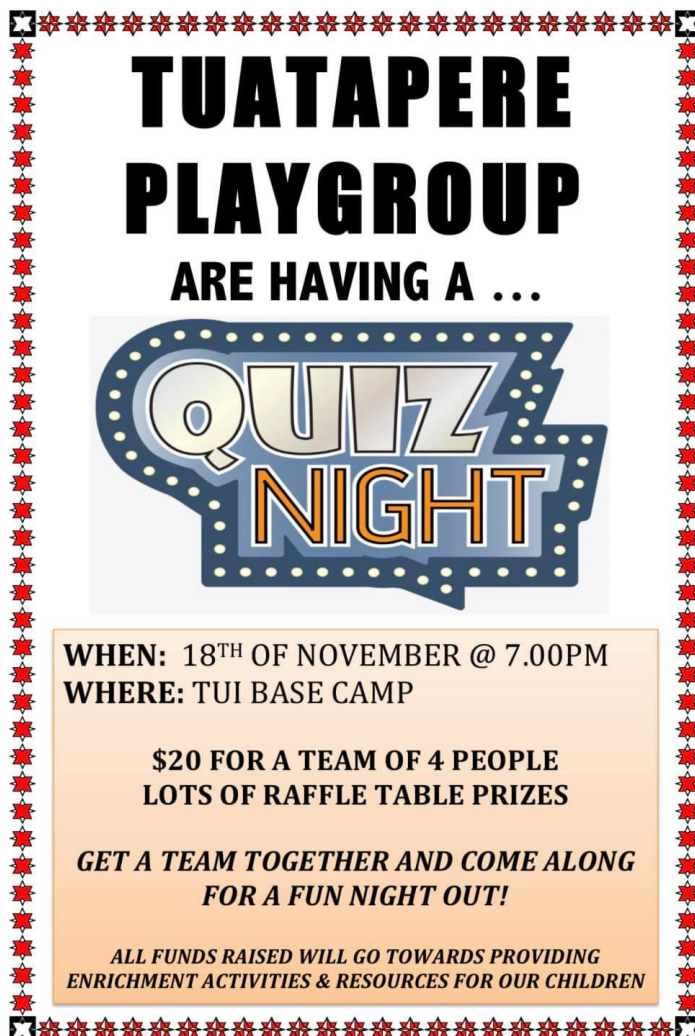
15 MIN SESSIONS

3X DIGITAL FILES \$30

Perfect for children & families

To book your session contact
Maria Egerton on 027 843 4691 or
Nathalie Pahl 027 475 9075 or message the event page on FB

WAIKATO TOWN & COUNTRY CLUB
SAT 13TH NOV 12PM – 5PM
SUN 5TH DEC 3PM-5PM



TUATAPERE PLAYGROUP ARE HAVING A ...

QUIZ NIGHT

WHEN: 18TH OF NOVEMBER @ 7.00PM
WHERE: TUI BASE CAMP

\$20 FOR A TEAM OF 4 PEOPLE
LOTS OF RAFFLE TABLE PRIZES

**GET A TEAM TOGETHER AND COME ALONG
FOR A FUN NIGHT OUT!**

**ALL FUNDS RAISED WILL GO TOWARDS PROVIDING
ENRICHMENT ACTIVITIES & RESOURCES FOR OUR CHILDREN**

COMMUNITY NOTICES & EVENTS

Western Southland Gun Club Upcoming shoots

14th November

Hunting & Fishing 100 Target Shoot

9.00am start

at the Pukemaori Grounds

Entry \$60

Eye & Ear protection compulsory &
available for purchase at the club.
Ammo available with Firearms license.
Food available.

Xmas Hamper 12th December

10.00am start

at the Pukemaori Grounds

75 sporting Targets \$50.

Eye & Ear protection compulsory &
available for purchase at the club.
Ammo available with Firearms license.
Food available

New Years Day Shoot Jan 1st 2022

10.00am start

at the Pukemaori Grounds.

80 Targets \$50.

Eye & Ear protection compulsory &
available for purchase at the club.
Ammo available with Firearms license.
Food available



OREPUKI COMMUNITY PROMOTIONS
PRESENTS

THE OREPUKI K 2021

COMMUNITY FAMILY EVENT

SATURDAY NOVEMBER 13TH 2021 9.00AM START

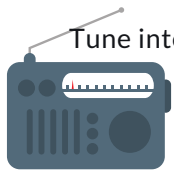
EVENT POSTPONED

- OREP
- BBQ
- KIDS BIC
- SANDCAS
- GAMES
- SPOT PRIZES

COMPETITION

Event is weather permitting. Postponement date is Sunday November 28th. Event will be held in the hall on Sunday if weather is bad on both days.

CONTACT OREPUKIPROMOTIONS@GMAIL.COM WITH ANY QUESTIONS



Tune into Tuatapere's very own Radio Station

88.2 FM - Tui FM!

Hits of the 80's & 90's and
today's current music!

COMMUNITY NOTICEBOARD

TUATAPERE RSA AGMS

Tuatapere RSA and Tuatapere RSA Memorial
Bursary Trust AGMs to be held

Wednesday 3 November at 7:30pm at the
RSA rooms, Main St, Tuatapere. All messages to
John Munro Secretary **03 226 6341**

TUATAPERE GOLF CLUB INC AGM

Annual General Meeting

Thursday 18th November 2021 - 7pm.

All welcome.

C Erskine - Secretary.

TUATAPERE HIGHLAND PIPING & DANCING SOCIETY

The Tuatapere Highland Piping & Dancing Society
committee have decided to postpone the 65th
celebrations until a later date when things maybe
more settled.

We still hope to host our competitions on the
6th November, at the RSA Hall. All welcome!

MONOWAI/BLACKMOUNT VILLAGE GARAGE SALE

Monowai Village and the Blackmount Community
is planning to have a village garage sale on
Saturday 13 November at Monowai Village,
Turbine Drive.

Would you like to join us with a car boot sale?

The car boot sale will be \$10 per car and proceeds
from this will be donated to Furever Homes Pet
Rescue. If interested please contact
Merrill Laurence on (03) 225 8267

ADDRESS NUMBER PLAQUES



Address number plaques can now be
ordered through the Tuatapere Community
Worker Support Trust.

These can be clearly seen anywhere day or night.
The number plaques are for properties. Each
number must be specific and correct for this
purpose.

To order please call **Keri Potter 027 757 5983**

SALVATION ARMY FAMILY STORE TRUCK

The Salvation Army Family Store Truck
will come out and collect large amounts
of your pre-loved furniture & other
household items. This service is free.
Please call the store to organise your visit
on **03 214 5380**



TUATAPERE HEALTH & GIFT SHOP

- Riverton Pharmacy

CHANGE TO SHOP HOURS

As of Wednesday 29 September opening
time will be 12.00pm.

1st prescription drop from 12.30pm daily.

If we can help in any other way, please
contact Riverton Pharmacy **(03) 234 8515**



COUNTRY CORNER CRAFTS

Come in and browse and see what we have
to offer. Hats, scarves, children's knitwear,
cards, jewellery, woodware, sewing, jams,
pickles, sauces, etc.

Tuatapere souvenirs "On Natures Edge"
logo are always available.

Is anyone interested in joining to sell their
crafts? You are more than welcome to
contact us.

Want to volunteer your time & work in the
Craft Centre - let us know! It's a great way
to meet people! If you wish to view the
shop and it is closed, please ring the ladies
below to open it for you.

Louise Greber (03) 668 6001 or

Lyla Sherriff (03) 226 6187

COMMUNITY NOTICEBOARD

TUATAPERE PRESBYTERIAN CHURCH POP UP SECOND-HAND SHOP HERE AT THE SAME PLACE EVERY SATURDAY.

Held **10am to 2pm every Saturday** of the month in The Tuatapere Presbyterian Church Hall, Main Road, Tuatapere. It is easy to find. Look for the flags on the fence and the pavement sign. All welcome. All proceeds are given as fundraising for the church.

THANKS TO THE WONDERFUL DONATIONS RECEIVED THE SHOP IS ABLE TO OFFER A LARGE QUANTITY OF QUALITY GOODS AT VERY AFFORDABLE PRICES. THE STOCK IS CHANGING WEEKLY. COME AND SEE WHAT IS NEW.

Want to sell some of your own goods?
Talk to me about the options I can offer.
Donations of clean, good quality goods gratefully accepted.
phone or text **Carol Diack 021 110 1835**

TUATAPERE PRESBYTERIAN CHURCH MARKET DAY

The church market is held from **10am to 2pm every 3rd Saturday of the month** in the Tuatapere Presbyterian Church Hall, Main Road, Tuatapere. All welcome.

**THE NEXT MARKET DAY IS
SATURDAY 20th NOVEMBER from 10am to 2pm**

Come and see the large variety of goods on offer.
Enjoy a cup of tea or coffee and something to eat.

To book a table or any queries please phone or text
Carol Diack 021 110 1835

**Get your car washed, dried and windows cleaned
Price arranged on request!**

Contact: Rex Hibbs Flat 1/26 Orawia Rd, Tuatapere

WAI AU VALLEY PRESBYTERIAN CHURCH

Services for all ages! Every Sunday at 10.30am.
Tuatapere Presbyterian Church, Main Street, Tuatapere.
All welcome to join us.

SOUTHLAND COMMUNITY LAW CENTRE

Free legal information and advice for the
community of Southland.

2nd Floor, Cue Building, 33 Don Street, Invercargill.

Phone (03) 214 3180

Freephone: 0800 550 800 (outside Invercargill city only)



NEED A JP?



The following Justices
are available
by appointment:

Tuatapere

Keri Potter 027 526 3137

Donald Egerton 027 432 5407

Te Waewae Bay

Shirley Whyte 027 504 5220

Blackmount

Nicky Baker 0276435880

WESTERN SOUTHLAND WOOLCRAFT GROUP

Spinning, Felt, Weaving, Knitting,
Crochet. Other crafts welcome!

1st Wednesday of the month.

10am - 3pm. BYO Lunch.

For details please contact:

Helen Todd 022 378 9743



TUATAPERE & DISTRICTS LIONS CLUB PROJECT



SUPER DIRT

Super dirt bags are now
weighed so more in each bag!
\$8 per bag - ready for your garden!

Super dirt can be collected from:
Cracks Yard, Grove Burn Road,
in the mornings Monday to Friday.
Weekends by arrangement.

Delivery by arrangement - (but not
guaranteed)

Phone Trevor (03) 225 5864 or

Stephen (03) 226 6817



TUATAPERE COMMUNITY WORKER

Room 5 Medical Centre
69A Orawia Road

Monday - Thursday 10am to 3pm

Keri Potter 027 757 5983

Email: tcworker@xtra.co.nz



WAI AU MEMORIAL LIBRARY

Library Hours: Fridays

10:00am - 11:30am

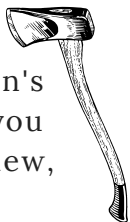
2:30pm - 4:00pm

7:00pm - 8:00pm



The Wi-Fi is available free to all library members. Just ask one of our friendly volunteers to help you set up your device.

TUATAPERE BUSHMAN'S MUSEUM



Orawia Road. If the Bushman's Museum is not open when you have visitors who wish to view, you can contact:

Lindsay Faulkner (03) 226 6650 to arrange a suitable time.

TUATAPERE ENVELOPES

Envelopes printed with the "Tuatapere on Natures Edge" Logo can be purchased at Country Corner Craft Shop 1A Orawia Road **Cost \$3.00 per 10**



ESSENTIAL OILS 100% PURE GIFTS OF NATURE
Florals Trees Plants Herbs Spices Citrus

To Learn More, phone or text your local Wellness Advocate
Carol Erskine Papatotara 0274 599 654



TUATAPERE MAINLY MUSIC

A pre-school music and movement-based playgroup.

Mondays during the school term at the Tuatapere Presbyterian Church Hall.

Music session starts at 10am followed by a time of morning tea and play. \$2 per family.

Morning tea is provided for all.

New families welcome!

Find us on Facebook:

"Tuatapere Mainly Music"



For more information contact
Heidi 022 315 3326

COMMUNITY NOTICEBOARD

SPREADING THE GOSPEL MESSAGE

Our names are Rhonda Gibson and Desirée Watchorn.

We are living and working in the wider Southland community during 2021.



We share the Gospel message at various locations around Southland each week - currently in Gore and Invercargill. These meetings are open to the entire community.

If you prefer, we could meet you somewhere that suits you better.

We only use The Bible as our reference. Free of charge.
Phone or message **027 5727 468** or **022 6485 987**

TUATAPERE PLAYGROUP

23B Orawia Road. **Friday Playgroup 9am - 12pm**

All parents and children welcome!

Children's morning tea is a packed lunchbox from home at Playgroup (as opposed to a shared morning tea).

Any queries please contact:

Gemma Bennett **022 040 3368** Alice Harris **027 270 0363**

CLIFDEN PLAYGROUP

45 Otahu Eastern Bush Road.

Every Wednesday (during School Term) 9:30am - 12:30pm.

All mothers and children welcome.

Bring packed lunchbox for your child's morning tea.

Any queries to: Sarah **027 699 5234**

TUATAPERE SCOUTS

Are you and your family looking for something that will foster personal development, create a sense of community and at the same time challenge you or a school age member of your family? Have you thought of joining Scouts? At Scouts we have Kea's for children aged 5-7 yrs, Cubs for children aged 7- 9½, Scouts for 9½ -15yrs. We also have a need for leaders so we can deliver our programmes effectively. Please contact:

Leader Anne-Marie **027 688 5828**

6 Group Leader Quinton **027 223 4842** or **(03) 226 6969**



COMMUNITY NOTICEBOARD

PLEASE HELP!

Can you please search your homes for
Waiau Area School hoodies & track suits.

We have been trying to kit out our students for
various events but we are missing so many that
we can't! We really need them back as soon as
possible. Thanks!



TUATAPERE TOY LIBRARY

Tuatapere Toy Library has been a toy
swap/hire service provided to the
young families of Tuatapere and
surrounding since 1989. The purpose is to create
opportunities for the little people of our
community to have accessibility to toys.
A small contribution of an annual membership
allows families to join the group and have access
to the toys.

For more information or questions please text or
ring Nathalie Pahl on **027 4759 075**



SENIOR CITIZENS

Senior Citizens is a group of over 60s that meet
every **Friday afternoon at 1pm** at the rooms
behind the RSA Hall.

We are always looking for new members so if
you would like a fun afternoon playing bowls,
cards or just catching up with friends, come and
join the group.

Contact: Olive Bennett Ph (03) 2266 477

TUATAPERE AMBULANCE

Did YOU Know?

The Tuatapere Ambulance is a funded
service by the Tuatapere Lions Club, for
the residents of Tuatapere & Districts.

Should you receive an account for this
service from St John, please forward it
immediately to:

The Treasurer

Tuatapere Lions Club

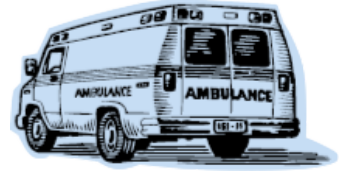
PO Box 47

Tuatapere

Sometimes we experience difficulty in
receiving the invoices for YOUR trip - so
PLEASE do forward them on to us.

Thank you!

**Tuatapere Lions Club Charitable Trust
Ambulance Committee**



WESTERN SOUTHLAND HEALTH SHUTTLE

The Western Southland Health Shuttle
Service travels from Otautau, Ohai,
Nightcaps, Tuatapere, Riverton - covering
all of Western Southland. We also connect
with the Invercargill-Dunedin shuttle.

The Western Southland Health Shuttle
operates Monday - Friday (excluding
Public Holidays).

Bookings are required by 3pm the day
prior to transport.

Ph: 0800 103 046 to book.

Please book as soon as you receive your appointment.

TUATAPERE VOLUNTEER FIRE BRIGADE

We're on the lookout for members to join
this rewarding organization. We are
looking for persons who are, ideally,
available throughout the day.

If you think that you would like to try this
(sometimes lifelong) commitment, then
please feel free to come and try it!

We train on Tuesday nights at 7:30pm
during daylight saving and 7pm through
the winter months.

We look forward to meeting
with you.



**SOUTHLIFE
Community
CHURCH**

Steve & Sharon
are Pastors
and we are an area church.

We believe in
Community and
endeavour to
show this the
best we can by
the way we
care and serve!

MISSIONS
"BRIDGE CHRISTIAN
MINISTRIES UGANDA"

We warmly invite you to come
along to one of our services.
It would be great to see you

Sunday Service
10am
Truro St, Orepuki

Tuatapere Community Christmas Lunch on Christmas Day

Keri Potter, Tuatapere Community Worker

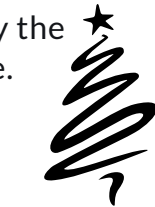
The Tuatapere Community Christmas Lunch will be held on Christmas Day **25th December 2021** from **12:30pm to 3pm** at **Tui Base Camp**.

The first 50 names to register for this event will be confirmed. If I do not have these names and confirmations for this event it will not go ahead.

I have applied for funding to cover the cost of a two-course meal at no cost to you. This will not however include drinks you will purchase your own.

You need to register your name with me by the 1st December 2021 for a place at the table.

Come on Tuatapere ... Let's do this.
Contact **Keri Potter** on **027 757 5983**



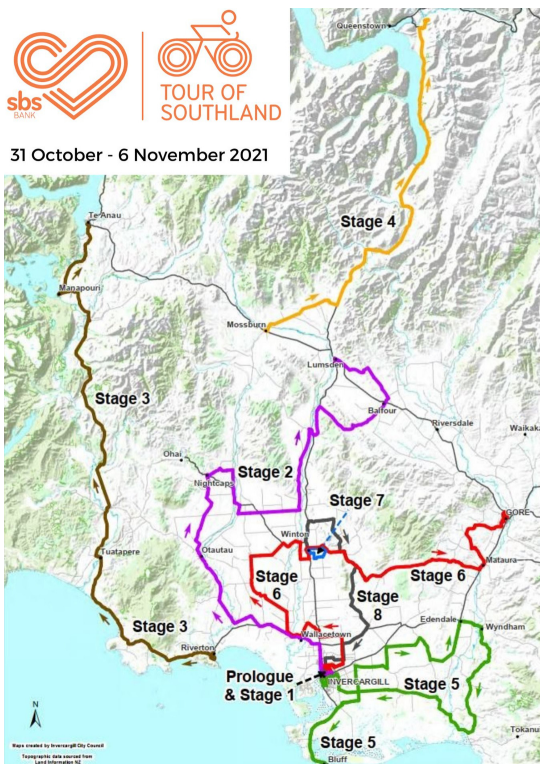
Tour of Southland

The Tour of Southland road cycle race is taking place from **Sunday 31 October** to **Saturday 6 November**.

Please take extra care and expect significant **DELAYS** on the state highway network across Southland.

For more details, check our interactive travel map here:

<https://journeys.nzta.govt.nz/traffic/southland>



Tuatapere Freight

LOCALLY OWNED & OPERATED

RUNS MONDAY TO FRIDAY
WEEKENDS BY ARRANGEMENT

Phone Brandon

027 436 4360



Shearing magazine

Des Williams (editor)

Tel 07 839 2891 : Mob 0274 833 465

Email : shearingmag@xtra.co.nz

Member NZ Guild of Agricultural Journalists and Communicators (Inc)

LAST SIDE PUBLISHING LTD

PO Box 102, Hamilton 3240, New Zealand

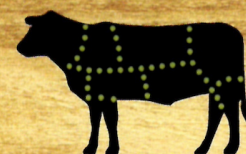
RAW FARM HOMEKILL

Wayne & Rachel Saunders
Qualified Butcher

027 457 6350

rawfarming@yahoo.co.nz

82 Clifden Highway
Tuatapere



Cut up the way you want

Beef

Pork

Sheep

Venison

Other game meats

Traditional Smallgoods



Hump Track Project "Happenings"

This newsletter brings you the latest project updates, stories, events and actions from the team developing the Tuatapere Hump Ridge Track into a Great Walk.

Latest News - the first newsletter!

Welcome to the first edition of the Hump Track Great Walk Project newsletter. It is all "happening" right here.

The project team are keen to keep you informed about the progress of this project over the next couple of years.

This newsletter will be the mainstay of the planned communications, so get in touch if you would like to receive this newsletter into your inbox.

Project History - key facts

As part of Budget 2017, the "Tourism Growth Initiative – New Walks" was included as some of the Cabinet-approved initiatives. As a result, DOC was awarded capital and operating expenditure for two new Great Walks to be established.

In July 2019, the Tuatapere Hump Ridge Track was announced, after a rigorous selection process, as a successful applicant, by the-then Minister of Conservation, as the next (and 11th) Great Walk.

The Tuatapere Hump Ridge Track has been operation for nearly 20 years as a two-night walk and is managed by a non-for-profit business, on behalf of the Tuatapere Hump Track Charitable Trust.

The main objective of this project is to deliver a new Great Walk at the Hump Ridge location by upgrading the track surface, structures, carpark, interpretation, and storytelling package.

The Hump Ridge Great Walk Project will be managed by a DOC Project team, with oversight by a Governance Group that includes mana whenua namely, Te Rūnanga o Ōraka-Aparima, as well as the representatives from the Tuatapere Hump Ridge Track Charitable Trust & the Hump Ridge Track Inc., the not-for-profit business managing the track operations.

This project offers opportunities for DOC to build on partnerships - with mana whenua/local iwi, the Charitable Trust, the local community, the landowners, and other key stakeholders - to explore ways to provide an enhanced Great Walk visitor experience.

The Tuatapere Hump Ridge Track is an enduring legacy for the western southland community that was heavily affected by the loss of the NZ Forestry Services/banning of native logging in mid-1980's.

The core benefit from this project for the community will be the added economic benefit that it will bring to the region - through additional employment, business opportunities and the increased tourism/visitor spend as people want to walk a Great Walk.

At the conclusion of the project, i.e., when the Great Walk is up and running, the Charitable Trust will be responsible for the management and operation of the upgraded track and facilities.

Want to know more about the Hump Ridge Great Walk Project?

Project Webpage: Get all the facts and stay informed via

www.doc.govt.nz/hump-ridge-great-walk-project

Project Email: Contact the project team at any time to ask questions or to be added to the distribution list to receive these newsletters:

HumpRidgeGWP@doc.govt.nz

Media Enquires: please direct to media@doc.govt.nz

We Want Your Photos!

Share your local area snaps with us via Instagram or to the "This is Tuatapere" Facebook page and tag them with **#yourwesternwanderer** OR email us a copy to yourwesternwanderer@gmail.com



Please ensure your photo is landscape size



We'll choose one each month to feature on the cover of the Western Wanderer!

PAUL ANDERSON BUILDER

AVAILABLE FOR ALL YOUR BUILDING REQUIREMENTS.

NO JOB TOO SMALL.

COMPETITIVE RATES.

REFERENCES AVAILABLE!



Mobile: 027 890 3602

thetakis@outlook.com

Shirley Whyte
Your local real estate specialist living & working in Western Southland
now also an Accredited Justice of the Peace.



for:
Friendly service, reliability, sound local knowledge
in Western Southland, Te Anau & Stewart Island
All enquires welcome - all calls answered



Harcourts  M 027 504 52200 O 03 214 4080
E shirley@harcourtsinv.co.nz
W www.harcourts.co.nz

Holmwood Real Estate Ltd Licensed Agent REAA 2008

**Looking for a babysitter or
someone to mow your lawns?**

Well, you're in luck!

**I'M A RELIABLE TEENAGER
LOOKING FOR SOME WORK**

Contact Jay on 027 242 2890

Specialising in
Dairy Conversions
Rural Fencing
Post & Rail



H Gill Fencing,
Eastern Bush
Phone 021 225 5489
After Hours 03 225 5488
Email hamish@hgillfencing.co.nz



accelerate
PHYSIOTHERAPY

office@acceleratephysio.co.nz
60 Deveron Street, Invercargill
(off street parking)
0800 291 475

Accelerate is a gentle form of exercise, effective in providing long term solutions
after an injury, especially low back pain.







We have interests in:

- > Spinal/Back & neck injuries
- > Acupuncture
- > Sporting Injuries
- > Balance & Dizziness
- > Running, Cycling & Multisport
- > Workplace Injuries / Ergonomic Onsite
- > Men & Women's Pelvic Health
- > Work Evaluations & Educations
- > Pilates

Joel Barnes
BPHTY, BExSci

Andrea Robertson
BPHTY, PG Cert ACUP

Andrea Murray
Dip PHYT Dip M.T.

Find us on  **facebook**

www.acceleratephysio.co.nz 

Hauroko VALLEY PRIMARY SCHOOL

**Kia ora, Bula Bula, Nihao
Western Wanderer Readers**

Term 4 has arrived with a few beautiful sunny Spring days. On a warm and sunny day, you really can't beat Southland! We welcome the Hays family to HVP and siblings of current students - Aoife and Michael. We are rearing to go with a buzz in classrooms with a variety of engaging opportunities for our tamariki. Check out the Term 4 events and activities we are looking forward to!

We are extremely grateful to Tuatapere Saleyards Company who shared funds with local community groups including Hauroko Valley Primary School. Our students are confident communicators and they have been considering options to add value to our students and school environment. There are several outstanding inspirational concepts that we look forward to developing thanks to this support and to our student voice! Thank you!

Term 4 Events

Discovery Time, Year 7&8 Golf Tournament,
Touch, Hauroko Valley Primary School Photos,
Science Roadshow Year 4&5,
Science Week w/ Dr Sue Galloway Years 1-8,
Year 7&8 Technology, Bike Well Programme,
Swimming, HVP Swimming Sports,
Mitre 10 Tough Kids Year 4's,
Borland Lodge Camp Year 5&6,
Prize Giving & Carols in the Caves

Rockstar Writing

Tipping the hot chocolate up to my lips, I let the hot chocolate become a tourist to my body. I had a sudden burst of flavour as it rumbled and tumbled down my pipes and finally made it to my stomach. The taste had to lift my thoughts and get my mind rid of all the bad things in the world. Everytime things went wrong, I had a hot chocolate. By Sam

explorers negotiators writers creators leaders golfers readers hard workers explorers

Once upon a time a volcano erupted. All of the dinosaurs had to go. There were 30 volcanoes surrounding the dinosaurs. They had nothing to do except to suffocate and die! Then all the dinosaurs became extinct. Dinosaurs were very fierce creatures, but they had a very short life. By Hadlee

The racing cars are racing to the other side of the Earth. Some will crash but some won't crash. Tane's car crashed, but three cars are still in the race. On the race they raced to the Dino Land. They saw a triceratops and a raptor. Then they came to the end. By Jack R

On Sunday after lunch, the sun shone and you could almost see the layers of it. The duck was at its nest at the bottom of the kauri tree. It waited anxiously for its eggs to hatch. The duck nest was by the river. In the river there were fish, crocodiles and electric eels and over the river flew an albatross. By Stanley

There is a herd of monsters. They are destroying the buildings and eating the people. The monster kept on running, destroying all the buildings. They were so hungry that they ate all the people. By Jackson

Every school needs pet day. Amazingly, you get to learn new things. You need pet days, so you can see other people's pets and personality of pet care. Pet day means you can show your skills. When you have pet day you can show your creativity. Schools definitely need pet days! By Maddi N

Every school should have a pet day. Shockingly, some schools have not even seen some types of animals up close. I think all schools should have a pet day because it gives children a chance to raise and feed their animals by themselves. Not only that, but everybody loves pet day. So why not have one?! Most importantly students can learn lots of new things about their pet and different animals. That is why every single school around the world should have a pet day. By Paetyn

Excitedly, kids have lots of fun at school pet days. Every year kids that live in towns get to see new animals. Friends get to see friends' pets. Kids look forward to pet day. I hope in the future every school has a pet day! By Axel

Nga mihi nui,
Julia Waikato
Tumuaki/Principal

"Always Our Best/Tonu to tatou pai".



skaters farmers helpers dancers counters nurturers listeners speakers skaters farmers



Registered ELECTRICIAN

For all electrical work
No job too small
A/Hours service available

Jay Brownlee
8 Carlyle Street, Tuatapere 9620
A/H 03 226 6673
Mob 027 4965 863
sparkieintuatapere@gmail.com

For all your Accounting and Tax Solutions

Ask for Janice or Trevor England

 03 2266110

Aparima Accounting Ltd
57 Main Road Tuatapere



CANTERBURY CARS

4WD Specialists

For all your vehicle requirements

Cars, utes, 4WDs, vans

Finance available

Contact: Murray Dowling
027 556 2655

Visit our website
www.canterburycars4x4.co.nz



**HARRY'S
MACHINES**
EARTHWORKS
027 304 3714





* 13 Tonne Digger * 5.5 Tonne Digger * 2.7 Tonne Digger- dry hire or operated
* Tip Truck * Bob Cat * Augers * Post Driver * Tree Saw & Hedge Trimmer


* Tree Trimming * Post Driving * Fencing * Cleaning of Wintering Sheds * Site Clearance * Cartage * Gravelling * Lane Maintenance * General Earthworks

For all enquiries and bookings please contact Lance or Alice Harris
Lance: 027 304 3714
Alice: 027 270 0363
Email: lanceharris533@gmail.com
Check us out on facebook- Harry's Machines

CHAINSAW SHARPENING
All chainsaw chain sizes precisely sharpened and rakers taken down accordingly, guaranteed results
Chain only \$10 Taken Off & Refitted \$13
Please phone **027 308 2501**

WANTED TO BUY
Possum Fur, Hard deer,
Antler, Deer Velvet.
Phone Leith 027 496 3721

**WAIAU VALLEY
SHEARING LTD**



**Simon de Vries
Julie Heaps**
**027 840 9867
03 226 6212**



With the silly season around the corner, I thought I would share a couple of recipes to make that special platter. These recipes will impress family and friends.

Sesame and Oregano Lavosh

Ingredients

- 1 cup plain flour
- ⅓ cup wholemeal flour
- 2 tbsp each black and white sesame seeds or 4 tbsp just one kind
- 1 tbsp finely chopped fresh oregano or 1 tsp dried oregano
- 1 tsp salt
- ¼ cup olive oil
- 1 tsp sesame oil
- ½ cup water

To Finish

- Olive oil
- Flaky sea salt

Preheat oven to 165°C and line an oven tray with baking paper. In a mixing bowl stir together the flours, sesame seeds, oregano and salt. Mix the oils and water together and add to the dry ingredients, stirring to form a soft dough.

Divide the dough into 4 pieces and roll each out on a lightly floured board as thinly as possible. Cut into strips measuring about 4 x 17cm. They need to be virtually see-through.

Carefully transfer strips to the baking tray, brush lightly with oil and sprinkle with flaky salt.

Bake until crisp and pale golden - about 15-18 mins.

Allow to cool fully then store in an airtight container.



Beetroot & Creme Fraiche Dip

Ingredients

- 2 medium beetroot, peeled and cut into 3cm pieces
- 2 teaspoons olive oil
- 2 teaspoons honey or maple syrup
- 1 teaspoon ground cumin
- 1 teaspoon ground coriander
- ½ teaspoon fennel seeds
- Juice of ½ lemon
- 1 clove of garlic, chopped
- Zest of ½ orange
- ⅓ cup of either creme fraiche,
- Sour cream, unsweetened
- Greek yoghurt

Preheat oven to 180°C.


Toss beetroot with olive oil, honey/maple syrup, cumin, coriander and fennel seeds in a baking dish, season with salt and pepper and roast for 25-30 minutes until tender. Leave to cool in the fridge.

Blitz cold beetroot with lemon juice, garlic and orange zest until smooth.

Add creme fraiche and pulse a few times until just combined. Season to taste with salt and pepper.



yum!
yum!



MR STEEL

TUATAPERE

PH: 027 276 6816

MALCOLM

**For all your engineering,
steel fabrication and repair needs!**



Lynley McKerrow

Celebrant
Funeral and Marriage

P: 0272 974 767
E: nanamac60@xtra.co.nz

with care - with love - with dignity



C: 0274 247 102
T: 03 225 8652
E: admin@drakeplumbing.co.nz

KIERAN DRAKE
Certifying Plumber
& Drainlayer


FORDE SHEARING LIMITED

Available for all new and existing clients

For all your shearing and
crutching requirements

Please phone Darin or Julie Forde

(03) 235 8853
027 229 7760



BEN MCMASTER BUILDING

Ph: 027 202 7955
benmcmaster@live.com

- Licensed Building Practitioner
- Sheds, renovations & new homes
- Based in Western Southland

You dream it, we'll build it

TUATAPER HANDYMAN SERVICES

Barry Bennett
(03) 226 6730

- **Painting - Interior/Exterior**
- **Waterblasting**
- **Spider & Fly Spraying**
- **General Repair Work**
- **Lawnmowing**
- **Weed Spraying**



SPECIAL FEATURE - ONLINE SAFETY

Scams & Fraud

Online scams are on the rise! They are intended to manipulate or trick people into giving away their personal details, financial details, or money.

"A scam becomes fraud when a scammer gets someone's personal or financial details and uses them for their own gain, or receives money from their target under false pretences. Fraud is a criminal offence."

While some scammers will simply ask their target directly for money, others will be more subtle about what they want. They can trick you into parting with personal or business details that they can use to:

- get access to your finances;
- steal your identity;
- buy goods or services;
- access your business networks or systems.

Common Types of Scam

Phishing is a type of email scam, where the sender pretends to be a trustworthy organisation — like a bank or government agency — in an attempt to get you to provide them with personal information, like your internet banking login details.

Social media scams are where the scammer pretends to be someone you know and ask you for money. For example, they'll say that the money is to help them get home as they're stuck somewhere with no access to funds, or that they need to pay for unexpected medical costs. Social media scams prey on people's good nature and their desire to help others.

Invoice scams affect both businesses and individuals. Scammers send fake invoices requesting payment for goods or services that you didn't ask for or receive. They often say that the due date for payment has passed, or that your credit rating will be affected if they're not paid.

PC tech support scams are where scammers call people at home pretending to be from a well-known tech company like Microsoft. They often request remote access to your PC or device claiming they need to repair an issue or install a software update. They do this to try and gain access to your private and financial information.

14 **Money scams** are common online. They include 'get



JOHN TIMPANY Craftsman

022 046 1402

7 Settlement Road
Papatotara
Tuatapere, Southland

Furniture

Native Timber & Timeless Design
Signs Carved & Shapes Shaped
Small Structures Erected

TUATAPER & DISTRICTS PROMOTIONS INC



We are always interested in hearing
new ideas and seeing new faces.

Everybody is welcome!

We meet at the
Waiau Town & Country Club,
3rd Wednesday of the month at
7:30pm (during Summer)

Contact Paula McKenzie
027 4346 777

Our Next Meeting:
Wednesday 17 November 2021

rich quick' schemes like the Nigerian prince scam, unexpected prizes, fake auctions and any other number of scams intended to part people with their money – or with personal details that the scammer can use for their own gain.

Romance scams are where a scammer takes advantage of someone looking for a relationship online. Scammers will use dating sites and apps or social media to build a relationship with someone. Once they've gained the person's trust, the scammer will start to ask for money, gifts or personal details that can be used to commit fraud. They often use fake profiles to make it harder to track them down.

Scam and Fraud Prevention

There's a number of ways you can protect yourself:

- Don't give out too much personal information online, whether on social media or by email.
- Put privacy settings on your social media accounts and don't add too many personal details to your profile.
- If a friend asks you for money on social media, call or email them to confirm their request is legitimate – don't pay without checking first.
- Turn on multifactor authentication for your online accounts.
- Choose unique passwords for your online accounts – don't use the same password for every account you have. Consider using a password manager like KeePass to manage them.
- Don't click on web links sent by someone you don't know, or that seem out of character for someone you do know. If you're not sure about something, contact the person you think might have sent it to check first.
- Don't pay invoices for any goods or services that you didn't ask for or receive. Be wary if a company you often deal with changes their account payment details unexpectedly. If you're unsure about an invoice, call the business directly to check the details before you pay.
- Always check your bank statements.
- Get a regular credit report to check that no accounts have been opened in your name without your knowledge.
- Try to remember that if something seems to be too good to be true, it probably is.

INDEPENDENT MIDWIFE
ISOBEL DEVERY
*Caring for women throughout
Pregnancy, Birth till six weeks
Post Natal.*
*Choices for place of birth,
Home or Winton Birthing Units
or Kew Hospital.*
*Free pregnancy tests
available on request.*
**Phone: (03) 22668822
027 2267020**



©Peetara, EthicGraphics

Sewing and Mending Services Available

Experienced machinist offering fast, reliable service with very reasonable rates.


I will mend/make anything from zip replacements to curtain making - just ask!

Free quotes and pick-up delivery service within Tuatapere.



Contact **Deborah**
(03) 226 6783 or 021 0305 667




DAGWOOD DAGGING

*Available now to all new and existing
customers for all your crutching
requirements.*

*3 Stand or Single trailer available
7 days a week, wet or dry.*



*No job too big or too small.
Competitive rates*

Jeff Chambers
027 3042 241



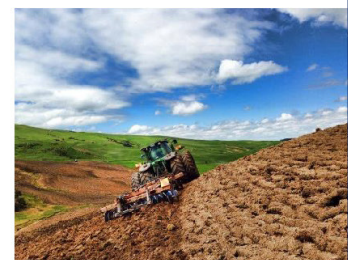
Rabco Ag Ltd – 021 362 766 – admin@rabco.nz
Agricultural Contracting Specialists - Western Southland



**Full silage
& baling
service**



Cultivation – including Direct Drill & Precision Drill



Effluent – Excavators - Hedgetrimming



WAI AU HEALTH TRUST – November 2021

Things continue to be very busy at the Medical Centre - with the changing of alert levels, it meant that we could open our doors again to not just acute and urgent appointments. So, one can only imagine the time the clinical staff have spent on catching up on blood tests, screening, and face to face appointments. We hope you all understand the different processes we must follow as a practice during this Covid-19 pandemic.

We cannot emphasise enough the importance of being vaccinated against COVID-19. The vaccination is free and is a pass to “unlock summer”. Summer is a great time to socialize with friends and whanau, so it's important to support the people you love to be vaccinated. Talk to them about why you got vaccinated. There are some great pointers on how to have a positive conversation on the COVID-19 website. Maybe you could offer your support by giving a lift to the clinic or buying them a coffee afterwards.

We really need to reach the 90% target. Tuatapere Medical are holding weekly vaccination clinics. You can book your appointment at bookmyvaccine.nz or phone **0800 28 29 26**. If our clinic times don't work for you, please contact our reception, and we will find a way for you to be vaccinated.

It is really disappointing to have so much negativity out and about in our community - it is not appropriate in anyway to make slanderous comments about any of our staff or our Medical Centre. Please remember the vaccination target is a national initiative, as a Medical Centre we are responsible for working together as a nation to help fight COVID-19.

Should you have any concerns in regard to our management of our covid vaccination programme please contact us. We are always happy to discuss your concerns, or guide you through the formal complains process, should this be necessary.

Kind Regards

Jo Sanford
Manager

Work: 2266123
Cell: 027 295 0429



Waiau Health Trust
69a Orawia Road, Tuatapere
Approved Registered ACC Provider
Monday to Friday
9:00am – 4:30pm
Ph.: 2266123

Practitioner Hours
Amanda McCracken (NP) – every
weekday

Sheryl Eden (NP –every Monday &
Tuesday)

Murray Allen (GP)
Thursdays

Physiotherapist
Tuesdays & Thursdays
Phone for an appointment

Podiatrist
Visits regularly –
Phone for an appointment

Warts/Minor Skin Lesions
Liquid Nitrogen treatment available
Phone for an appointment

Homebased Maternity Care
We are offering this service
in the patient's home.
Please contact Jo Sanford
on 2266123 for enquiries.

Day Activities Programme for
the Elderly
Every Tuesday & Wednesday
Please phone for further information.

District Nursing
Available as required by referral



CONTACT US TODAY

Phone 03 221 7192
Fax 03 221 7194

- **Excavators for general farmwork**
- **Laser guided drainage**
- **Gorse mulching & land clearing**
- **Lane maintenance**
- **Conversions**
- **Effluent Ponds**
- **Demolition**
- **20 tonne bulldozer, roller, grader**
- **Drain ploughing & alkathene laying**



IN AND AROUND THE COMMUNITY

The Tuatapere Toy Library Cabin

Nathalie Pahl, on behalf of the Toy Library Team

About a year ago we planned to move the toy library into a cabin with a security lock on community grounds. This way we would eliminate rental costs and having to have volunteers to open up shop. We started fundraising and applying for funding. The cabin and lock were quoted at \$20,000 we set the goal to at least raise 25% of that ourselves. Six months later we achieved our goal and some!

We had several locations for the cabin in mind and talked through the pro's and con's of each location. We ended up building a great relationship with The Waiau Medical Trust and the cabin was welcome on their grounds, for free. As over time some more thought went into the logistics of this destination it turned out not to be ideal. Then a new idea arose and The Swimming Pool was approached. This location turned out to be great, as the visibility and accessibility are much better here. The site is already gravelled and there is plenty of parking. And the added bonus of being able to combine a swimming trip with a toy swap as many of our members are also members of the pool.

We applied for funding and we are very grateful for all the support we received.

- Foodstuffs donated \$1000 Four Square vouchers to help with our fundraisers;
- Sid Slee Charitable Trust granted us with \$5000 towards the cabin;
- The Tuatapere Te Waewae Community Partnership Fund granted us with \$5000 towards the cabin;
- Community Trust South granted us another \$5000 towards the cabin;
- The Amenities Trust granted us \$2700 to buy shelving for when our cabin arrived; and
- The Clifden Rural Women also kindly donated us with \$362 to cover the cost of the key cards that we would have needed for the lock system.

We had some delays on the way but last week Friday (8/10/2021) the cabin got delivered! All the toys have been moved over, the shelving has been

put up and a brand-new sign is installed. Mike kindly donated his time and skills to us. Everything fits in and we are ready to rumble!

In the meantime, we've worked together with Chrissy who kindly donated her time and skills and she made up a brand new logo for the Tuatapere Toy Library. We are so happy with it we got a big 1200x1200 sign printed with the new logo on it and it now hangs loud and proud on our new home!

Colouring-In Competition

In fact, we're so happy we want to run a colouring-in competition. On the next page you will see an outline of our awesome new logo. We would love to see your make of it. There are some great prizes to be won so be sure to drop yours off at the Four Square before the 1st of December.

Christmas-Inspired Mini Photoshoot

We are wanting to do a festive opening for our new cabin but with Covid restrictions this unfortunately will have to wait a while. In the meantime we have proudly set up and supported a Christmas-themed photoshoot at the Waiau Town and Country Club with the talented Nicole Wallace. As a huge thank you to the community for their support and help, getting our new cabin. This is booked in for 15 minute time slots and you will receive 3x digital images for \$30. Great for family photos or kids portraits, to update the wall pictures or Christmas gifting.

Book your time slot now!

- Saturday 13th of November, 12pm – 5pm
- Sunday 5th of December, 3pm – 5pm

To become a member of the toy library please don't hesitate to contact me on **027 475 9075** or via our FB page <https://www.facebook.com/Tuatapere.Toy.Library>

The Tuatapere Toy Library wishes to thank their major sponsors, local businesses and the wider community for their support in making the cabin possible.

We could not have done it without you!



WESTERN ELECTRICAL
2008 LTD Electrical Solutions

Domestic | Industrial | Commercial

Quality Service at Competitive Prices

- New Builds, Rewiring & Alterations
- Dairy Shed, Farm & Industrial Maintenance
- Hotwater Element Replacement
- A/H Call Out Service Provided

ME
MASTER electricians

Ph 03 225 8974 / 027 439 3787
Fax 03 225 8973

MOUNTAINS EDGE CABINS MONOWAI



Mountains Edge Cabins

Hunting, Fishing, Mountain Biking,
Kayaking & Tramping
Cabin Accommodation

12 Cabins
Double and Single Available
\$35.00 per person per night

Eftpos available
Full Kitchen Facilities, Showers, Toilets, Playground
& the Tennis Courts right across the road!

We are 'pet friendly'

www.mountainedgecabins.com
Email: mountainedgecabins@gmail.com

75 Turbine Drive, Monowai. Ph. 03 225 8267

WaterForce

Irrigation Systems
Pumping & Filtration
Effluent Dispersal
Water Management

20 Winton Hedgehope Highway, Winton
03 236 9805 www.waterforce.co.nz
0800 4 FORCE (4 36723)

19

TUATAPERE TOY LIBRARY



COLOURING - IN COMPETITION



YOUR NAME:

AGE:

CONTACT PHONE NUMBER

HELP US NAME TUI & DUCK!

What should we call Tui?

What should we call Duck?



DROP INTO THE FOUR SQUARE, MAIN ROAD, TUATAPERE BY DECEMBER 1ST 2021
TO BE INTO WIN SOME GREAT PRIZES!

BARRETT *Ag* LTD

FULL SILAGE AND BALEAGE SERVICE



ALL CULTIVATION
INCLUDING DIRECT DRILL
AND STRIP TILLING - PRECISION PLANTING



EXCAVATION
20 TONNE DIGGER/ GRADER
D85 BULLDOZER/ ROLLER
TIP TRUCKS AND TRAILERS



Barrett Ag Ltd
Ph: Kahu- 027 5183 448
E: barrettagltd@gmail.com
FB: Barrett Ag



PUZZLE PAGE

Solve these visual word puzzles by looking for clues in the placement, colour or number of words!

1. Injury + Insult	2. Weather Bit
3. yourballcourt	4. B Cat 2 2
5. Bush	6. 1. 2. Blame 3. Blame
7. belly	8. ri poorch
9. mce mce mce	10. MONSTER

October's Rebus Puzzle Answers

1. A bundle of nerves
2. Small potatoes
3. Pinching pennies
4. Back on one's feet
5. The birds & the bees
6. A finger in the pie
7. One in a million
8. Grey matter
9. Too funny for words
10. Not worth a red cent

1. nerves nerves nerves nerves nerves	2. potatoes potatoes potatoes potatoes potatoes
3. PENNIES	4. back
5. b bird b bird bird b b b b	6. finger PIE
7. MILONELION	8. Matter
9. funny funny word word word word	10. Not = Cent

Magic Squares

Fill in the grids so that each column, row, and diagonal add up the given sum

The sum is 30.

	10	6
12		

The sum is 60.

		16
28		
24		

PROPERTIES WANTED!

Contemplating selling? You might be surprised by what your property could fetch on today's market

Contact Julie today for a free appraisal and to discuss how you could take advantage of this bouyant property market



Julie Guise

021 256 4164

julieguise@sre.co.nz

SOUTHLAND REAL ESTATE LTD
MREINZ

SOUTHLAND REAL ESTATE LTD
MREINZ

Licensed under The Real Estate Agents Act 2008

For all your fencing requirements

WESTERN FENCING
SHEEP | DAIRY | DEER



Call BEVAN 0277 413 213

ADS

ANDERSON DRAINAGE SERVICES

Keeping Southland Flowing



Fraser Anderson

021 162 0210

fraseranderson1@gmail.com

Forest Hill, Southland

Follow us on Facebook

Call us today!

- ✓ Tile Cleaning
- ✓ Culvert Cleaning
- ✓ Septic Tank Blockages
- ✓ Domestic Blockages
- ✓ Rural Drain Blockages

Employment Opportunity

Children now off to school or retirement without some work not for you?

If you are looking for part time work, then this job may well suit you.

We are looking for School Bus Drivers in the Tuatapere area or Ohai area

What you need:

- Full Class 1 licence (held for at least two years)
- A responsible and caring approach
- A clean driving record
- We will help you get a P endorsement (if you don't already have one)

If you want to join a business that is helping your community, then we want to hear from you.

Our recruitment process includes a Drug & Alcohol Test and Police Vetting check. We offer excellent wages and you will be driving late model mini buses that are a pleasure to drive.

For further details and to apply, contact **Ivy** on **027 278 2089** or email: **info@southbus.co.nz**
Southbus Limited

YOUR BUSINESS CARD COULD BE HERE!

CONTACT
yourwesternwanderer@gmail.com

FOR PRICING/DETAILS

LOCAL HISTORY - SPECIAL FEATURE

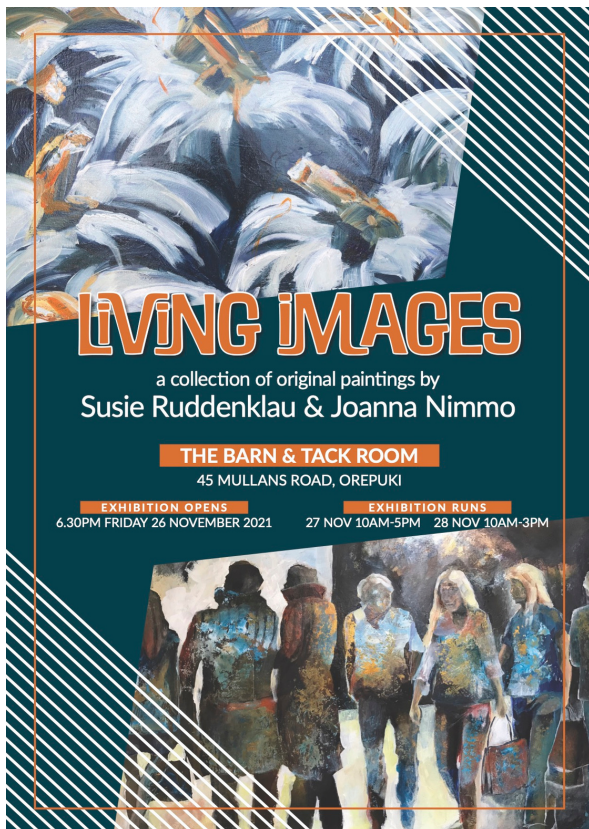
by *George Charlton*

First Settlers

The first Papatotara settlers, as Mr Erskine recalls them, were Michael Cavanagh, Malcom McDonald, Arkless Perkins, Matthew Fleming, Jack Matheson, Thomas Bain, Jack Donovan, John Cogle, Donald McPherson, Bob Lockhead and John Keith (partners), McIvor brothers, Archie McGeechy, Alex Beatson, Joe Coughlan and George McAdam.

Another old resident of the Tuatapere district is Henry Knowler who is now 87 and who came out from Kent (UK) when he was 22. In his early years he was a bush feller and to use his own words he has "felled bush on dashed near every place from Tuatapere to Orepuki." Most of it was axe and slasher work as he left the big trees standing for the mills. But anything up to 18 inches in diameter came within the terms of his contract. From the areas worked over by Henry Knowler came most of the telegraph poles that were used in Invercargill 50 years ago. Like William Erskine he sees many changes in the face of the countryside and the application of modern methods has shown him that there is a big future for the district. Work that in his day took months is now completed in days. And the farmers today are reaping the prosperity that had its origin in the hard back breaking manual work that was done in the first place by their fathers and grandfathers. The bushmen worked six days a week. On Sundays they ground up their tools and did their washing, such as it was. "And the pay was nothing flash", says Mr Knowler. "You didn't have to idle to make one pound a week on top of your keep."

William Erskine, of Papatotara, is content to leave the work of the farm to his sons. Watching them working with the bulldozer his own conclusion is that he was born 50 years too soon. He remembers the days when he and his wife used to rise at 4.30am in a swamp farm to milk cows; Mrs Erskine with the children about her and the youngest tucked under her arm, and the work did not finish till 9pm. Today he is happy when he is cleaning out a ditch. "I can sit down here and there is no one to see me." And Mrs Erskine adds "he reckons he's better off there than anywhere. I fail to see it 23 myself."



Waiau Town & Country Club

**Meals (homemade goodness)
available Thurs, Fri, Sat & Sun
from 4pm to 9pm.**

Family Friendly | Happy to cater for dietary requirements.
Please pre-book for groups of 8 or more.

Club Opening Hours:

Mon - Thurs 4pm till close.

Fri 3pm - close.

Sat Noon - close.

Sun 3pm - close.

Book now for functions/birthdays etc

We can cater! Call to discuss options.

03 22 66 489

What's on at the Club:

***SPUD IN A BUCKET COMPETITION**

Come and collect your Spud and bucket from the Club. Be in for the fun. Kids section! \$5 Entry

***STEAK NIGHT** – every Thursday night
only \$25 for a delicious steak meal.

***BONFIRE AND FIREWORKS** - Friday, 5th Nov
Weather permitting! Come down for a meal.

Bouncy Castle for the kids. You can bring your own fireworks for Local Fire Brigade to let off too!

*** MEMBERS DRAW & RAFFLES**

drawn every Friday night! Approx. 7.30-8.30pm.
Come in for a bite to eat and a drink, who knows you might be the lucky one to win \$\$!

**Keep an eye on our Facebook Page for
more details on upcoming events**

**Annual membership/subs were due 1st July
PLEASE PAY NOW!**

*Annual membership is \$50 or \$30 for pensioners.
Pay & collect at the club or pay online
and we'll post your card out.
Everyone welcome to become a member, just pop in
or call the club.*

Phone: **03 22 66 489** | Address: 41 King St Tuatapere
Email: waiautcc@gmail.com | Facebook: [facebook.com/waiautcc](https://www.facebook.com/waiautcc)
| Courtesy Van Available |

We look forward to seeing you!



WAIU AREA SCHOOL

Year 1-13 Education

Live to LEARN, LEARN to Live

Kia ora Western Wanderer Readers!

There has certainly been plenty of debate and opinions shared around the government's mandatory directive around vaccinations. We know that staff, regular volunteers and contractors coming in contact with students in schools, must be double jabbed/vaccinated by the start of 2022. This naturally has implications. If you are a member of the community, parent or caregiver coming into WAS then you can still come in. **You must sign in/scan the QR code and be wearing a mask.** This can be problematic too. If you're unsure/hesitant, please come and see me. Subsequently, being vaccinated will ease uncertainty. As a school, we'll try our best to minimise opportunities for large gatherings and will continue to follow Covid/Delta protocols. This means there will be **no community morning tea** (usually held in our library in early December) this year, I'm afraid. We are still aiming to hold some sort of modified/controlled Prize-Giving and Cultural Evening celebrating students' talents - more details to come.

Our focus continues to ensure all our students get as much class time as possible. We have limited (within reason) the extra curricular activities and have put on hold some of the annual events/things we do. Our senior staff are **working hard** to ensure our **NCEA students** are getting the most out of the limited time they have together. It's all hands on deck! We are confident that the work we're all putting in will pay dividends. Please be mindful of our senior students around NCEA.

As you know, there have been a few **jobs advertised** at WAS. It is not too late to see or email me about the caretakers position and the support roles for Free Lunches in Schools. If you're unsure of the roles (see previous WW) and believe you have the ability to work hard and be a team player then come and see me - you may surprise yourself! The teaching positions are in the Education Gazette. To date, we've managed to attract some strong applicants for these positions. This is very

encouraging considering Tuatapere is supposed to be a 'hard to staff' area in the teaching world. **WAS' positive reputation** is certainly building momentum. With steady leadership, a stable BOT, consistent staff, creative and fun loving students plus good accommodation, we are in the position to continue to add to our already **excellent teaching staff**. Your local family-orientated school is performing. Again, we are **very proud of WAS** and you should be too.

Of late, a few Tui/Clifden organisations were provided with the 'Sale Yard' proceeds. Thank you for thinking of WAS. This money has been tagged for many opportunities which will benefit students. The bulk of the funds will go **towards developing our horticulture area**. WAS will implement a 'garden to table' approach and the teaching of Ag/Hort will develop further. These funds certainly help thank you.

It's that time of year where the team reviews our strategic plans, evaluates and plans ahead. I welcome you to pop in and see me if you'd like to contribute in some manner. Having a different perspective or any kind of feedback/ideas can be really helpful. Your input is always valued - it's important we continue to receive current and future ideas from all walks of life. Afterall, it is your community school!

**Nga mihi, take care and keep safe
Andrew PB**



Alex Reid CONTRACTING

**Paddock Cultivation from
Ploughing to Sowing
Dry Hire available
Aerating
Direct Drilling
Ridging
Mulching**



Dairy Lane Maintenance

Tip Trailers • Vibrating Roller • 2 Tip Trucks

Sheep Conveyor

Drenching, Vaccination etc • 3 way draft

Large Skid Steer for calf shed cleaning, loading Muck Spreaders etc

4 Muck Spreaders • 16,000 litre Slurry Tanker
Pond Stirrer • Umbilical Slurry System



**PHONE ALEX
0212775308 CELL
03 2255377 HOME**

Ratty Says ...

Waiau Memorial Library



I learned how to weave flax.
My friend Karina had a class one afternoon. There were five of us. One lady came all the way from Invercargill. The first thing Karina showed us to make was flax rope. It was really easy, all you have to do is follow the instructions properly. I didn't. I was too busy thinking about food. I decided my rope would make great bracelets. They look very cool and I get to show them off to everybody.



The next thing Karina showed us was how to weave flax. Some bits were easy, some not so much. Karina was very, very, VERY patient with us. I thought she was very good at explaining things, I just had trouble

listening. I stopped for a quick break when someone bought some hot chips. They were yummy, I wanted to eat all of them but I was a good Rat. I only ate half.

Our project started to take shape, it turns out we were making a bag. Karina might have told us that but I probably wasn't paying attention because I was wondering if there was going to be any dessert. I think I made a bit of an Oops because what I was making didn't look like a bag, it was very lopsided. I got stuck finishing it off and had to get lots of help from Karina. Like I said, she was VERY patient.



In the end, I decided that my flax bag would make a great hat. I think I might have started a new fashion trend.

What do you think?



Tui Base Camp



Open from 7am every day!

Come in and check out our specials



Book now for your xmas functions

We now have a mini-van!

Contact us to organise a night out at Tui Base Camp (pick-up and drop-off) with some of your neighbours.

Contact James on 027 837 3521 for enquiries.

For all of your dine in and takeaway requirements including:

In-house roasted Amore Coffee

In-house made pies, sausage rolls, cheese rolls

Range of breakfast options

Packed lunches

Catering

Phone: (03) 226 6250

www.tuibasecamp.co.nz

Keep an eye on our Facebook Page for our latest updates!





GET MORE BANG FOR YOUR BUCK\$!

<p>\$12.99 EACH</p> <p>Jim Beam; CC 440ml 4.8% (incl zero); 355ml 7% all 4pk cans</p>	<p>Not Stocked</p> <p>Diesel 7% 330ml 6pk cans</p>	<p>\$15.99 EACH</p> <p>Woodstock (incl Zero) 7% 330ml 6pk cans</p>	<p>\$21.99 EACH</p> <p>Cody's (incl zero) 7% 250ml 12pk cans</p>	<p>\$22.99 EACH</p> <p>Cruiser 7% 12pk can range</p>	<p>\$22.99 EACH</p> <p>Woodstock (incl zero) 7% 250ml cans 12pks</p>	<p>Not Stocked</p> <p>ODD Company 10pk can range</p>	
<p>\$23.99 EACH</p> <p>Smirnoff Red Ice 5% 10pk bottles</p>	<p>\$24.99 EACH</p> <p>JB Gold; CC Premium 7% 12pk cans</p>	<p>Not Stocked</p> <p>Rinse 10pk can range</p>	<p>\$26.99 EACH</p> <p>Long White 10pk bottle range</p>	<p>\$29.99 EACH</p> <p>Tui Bourbon Tui Vodka Soda Barrel 51 7% 18pk cans</p>	<p>\$35.99 EACH</p> <p>Jim Beam Canadian Club 18pk 330ml cans</p>		
<p>\$9.99 EACH</p> <p>Jacobs Creek (ex Sparkling range) Montana Classic ranges</p>	<p>\$11.99 EACH</p> <p>Wolf Blass Yellow Label range (ex PN)</p>	<p>Not Stocked</p> <p>Brown Brothers Moscato range</p>	<p>\$14.99 EACH</p> <p>The Ned range (ex PN)</p>	<p>\$15.99 EACH</p> <p>Villa Maria Cellar Selection, Esk Valley (ex PN, Syrah, Grenache) ranges</p>	<p>Not Stocked</p> <p>Pasqua 1.5Ltr range Matawhero range (ex PN)</p>	<p>\$26.99 EACH</p> <p>Malibu Kahua 700ml (incl passionfruit)</p>	<p>\$34.99 EACH</p> <p>Ivanov Seagars (incl lime) 1L</p>
<p>\$35.99 EACH</p> <p>Larios 1L JB Honey; Devils Cut; Black 700ml Midori 700ml</p>	<p>\$36.99 EACH</p> <p>Jameson Jameson Cold Brew Absolut; Beefeater (flvd ranges all 700ml)</p>	<p>\$39.99 EACH</p> <p>Famous Grouse 1L Famous Grouse Smoky 700ml</p>	<p>\$39.99 EACH</p> <p>Johnnie Walker Red Bacardi (incl Gold/Spiced) range 1L</p>	<p>\$42.99 EACH</p> <p>Jim Beam Canadian Club (incl spiced) 1L</p>	<p>\$52.99 EACH</p> <p>Jagermeister Mt Gay Eclipse 1L Tito's 750ml; Cointreau 700ml</p>	<p>Not Stocked</p> <p>Jim Beam 700ml (or \$31.99 each)</p>	<p>Not Stocked</p> <p>Kingfisher Strong 7.2% 500ml cans</p>
<p>Not Stocked</p> <p>BRB 6pk can range</p>	<p>Not Stocked</p> <p>Mac's 6pk can range (incl cider / stunt double)</p>	<p>Not Stocked</p> <p>Tiger; Tiger Crystal; Sol 12pk bottles</p>	<p>Not Stocked</p> <p>Haagen 15pk bottles</p>	<p>Not Stocked</p> <p>Orchard Thieves 12pk range</p>	<p>Not Stocked</p> <p>Asahi 12pk bottles</p>	<p>\$24.99 EACH</p> <p>Monteith's (classic & batch brewed) 12pk range</p>	<p>\$24.99 EACH</p> <p>Lion Red; Waikato; Speights Summit 15pk bottles</p>
<p>\$24.99 EACH</p> <p>Steinlager 15pk bottles</p>	<p>\$29.99 EACH</p> <p>Heineken 15pk bottles</p>	<p>\$34.99 EACH</p> <p>Tui; Export Gold; Extra Low Carb; DB Draught 24pk bottles</p>	<p>\$39.99 EACH</p> <p>Corona 18pk bottles</p>	<p>\$39.99 EACH</p> <p>Export 33 24pk bottles</p>	<p>Not Stocked</p> <p>Carlsberg 24pk bottles</p>	<p>Not Stocked</p> <p>Steinlager Pure Stella Artois 24pk bottles</p>	

Promotion period between 1/11/2021 to 30/11/2021. While stocks last. Promotion only available at participating stores. Please contact your local store to confirm whether they are participating in the promotion and check the pricing in-store prior to purchase. Online pricing will vary.



100% **NEW ZEALAND** OWNED AND OPERATED
thirstyliquor.co.nz

FOLLOW US ON SOCIAL MEDIA



ASK ABOUT
LOYALTY CARD
BENEFITS &
GIFT VOUCHERS



TUATAPERE OUTDOORS & HARDWARE

For all your

Gardening tools, lawn care, garden hoses, insect and disease sprays, potting and compost.

We have those building requirements for that weekend job with a good selection of silicone, nails, screws and bolts.

New fishing rods and reels, fishing lures, good selection of soft bait, fishing nets, flounder and eel nets.



Good selection of giftware.

Come in, check out what we have.

Contact:

Judy **027 225 8192**

Paul **027 890 3602**

Shop **(03) 226 6363**



TUATAPERE TE WAEWAE Community Board

Margaret F Thomas, Board Chair

arpad@xtra.co.nz

03 226 6104

027 231 5581

Well it's nearly Christmas. Many people will be thinking about making arrangements, booking accommodation, camping spots and family gatherings etc. In lots of cases the Covid-19 will be the decider. One way you can help is to be fully vaccinated.

In spite of Covid there has been lots of activity in the area. Speed Boats on the Waiau River, Art Exhibitions in the Tuatapere RSA Memorial Hall and Market Days around the area to name a few. People are enjoying the Golf Course. Unfortunately, because of Covid restrictions, several activities were cancelled. Let's hope they can be rescheduled later.

Painting & Handyman Services

Experienced Painter

I can help with all sorts of odd jobs too!

Gardening
Lawn mowing
Tree & Hedge Trimming
General labouring



Phone **Luke Wikstrom 027 2773 925**

The Southland Times had an article in the newspaper, dated October 16, 2021. "In-home care and digital disadvantage biggest worries for Southland Seniors" Grey Power by Laura Hooper. She writes about digital disadvantage in the wake of Covid-19 particularly around banking and finance - a barrier facing Southland members, spoken to. Many of the members cannot use digital devices so they are missing out on Covid information. "They are missing out on being able to handle their finances on their own with no cheques and difficulties with banks not being open or open long enough." A very interesting article.

Recently DOC and the Hump Ridge Track held a public meeting at the Club to bring us all up to date with progress on the Great Walk.

I have mentioned this before. Have you got some spare time? Would you like to become a friend of the Green Heart? Please contact me if you are interested.

The Saleyards Committee/Trust has been finally wound up; another historical icon gone. I hope that the recipients of the money will acknowledge the Saleyards in some way.

Are you interested in the Bushman's Museum? Helpers are needed. Contact me for details.

Many people are enjoying the whitebait season.

28 Stay safe.



027 252 7933

- ☒ Renovations
- ☒ Extensions
- ☒ New Builds
- ☒ Sheds/Farm buildings
- ☒ Decks
- ☒ Pre-purchase house
- Inspections

Call us for any building requirements

Ph 027 252 7933 email: aaroncbltd@gmail.com



George Harpur, SDC Councillor, Waiau Aparima Ward

Hi and welcome to my November 2021 report, as for the weather well a few storm clouds over the Papatotara Coast region which will result in a large anticyclone to follow, when and how is the question that will be decided by the current legislation, guided hopefully by the definition of the four well beings, promoting the social, economic, environmental and cultural well beings of our communities. Local Government (Community Well-being) Amendment Act 2019. We all need fine and sunny weather to promote growth and prosperity to our region.

Staying with the local scene, back to the controversial Railway Station which is slowly being demolished by a very enthusiastic team of borer beetles whilst we wait and wait for decisions to be made by interested parties. I have had comments by a few members of the public over the past few years wishing to restore this building and I do think with a dedicated few this can be achieved at a relatively low cost with volunteer labour and donated materials. I would be interested to hear from others who have a little time and are keen to promote this option and work with the Community Board to tidy up and beautify this southern entrance to the town. Something needs to be achieved before the borer and the volunteers are holding up headstones. We also have three items of rolling stock rusting away in the long grass that need to be displayed either at Tuatapere or some other Southland destination. Do we want this???

On the greater council scene, the summer roading contracts are due to begin with resealing and area wide pavement work be done. This will cause some delays for the traveling public, but the result will be worthwhile. Obey the restricted speed signs and drive safely.

Over the last weekend we enjoyed the presence of the high-speed jet boat rally on the Waiau river, a great sight to see and we welcome the small distribution of revenue to our region. We also recently had a bus load from Real Journeys using the rugby club facilities and enjoying the well-maintained Domain whilst ferrying their passengers on local helicopter flights around the south coast. Once again, a little for the local economy and free advertising. Great stuff and cheers for now.



Phone: Anita Green 027 506 2418
Tuesday 9-5pm, Thursday 10-8pm, Friday 10-5pm - Appointments are encouraged.

CHAMBERS REPAIR SERVICE

45 Half Mile Road, Tuatapere

Ph: (03) 226 6654

- 24 hour Self Service Fuel
- Full Mechanical Workshop
- NZ Post Centre
- Agents for Wide Span Garage



Bring your lawnmower in for a service now & beat the rush

**MTA Gift Vouchers
Available**



**PASTURE METER READING THAT'S QUICKER
AND EASIER, WITH AT THE GATE REPORTS**

- Specialist in quality pasture meter reading with advanced sensor technology
- Provide 200 measurements per second or 18,500 readings over a single 500m pass
- Provides a fully integrated electronic support system
- Provides a secure web-based storage of information with easy access
- Prompt generated feed wedges for rapid decision making and seasonal comparisons
- Generate reports at the gate, supplying valuable pasture cover data and comparable results every time
- Improve heath & increase animal hydration
- Enhance production & improve water quality
- Reduce bacterial/algae contamination of trough water

**CLEAN TROUGH WATER MEANS
IMPROVED LIVESTOCK HEALTH**

Now 2 bikes
available
for pasture
metering



Brett George • P 027 351 3408  
E platemeterservices@gmail.com

The purpose of this new feature is to highlight student writers in our community and to give them an authentic audience. This piece was originally written as part of an Oral Language Speech Assignment.

A Life Less Ordinary

When I was told I had to write a speech about the last five years of my life I simply thought I wasn't going to do it. Not because public speaking is hard but the fact that I had to sit down and unpack my life experiences and how it has shaped me into who I am ... Right now.

"What do you want to do when you leave school?" is a question I have been asked a lot lately, one I try to avoid. Like everyone, I have dreams I want to achieve and the biggest enemy I have ever come across is myself.

Now I sit here at my desk thinking "what is a life less ordinary?" and I realise that by the age of 18 I had already lived a life and a half. To give you a better understanding on how my life has been less than ordinary I have decided to start from the beginning. Throughout my early school years I was always a top tier student. I would always show up to class on time, get all my work done and never really struggled with writing a speech. Primary school was a breeze, I was what you would call a "gifted student" as in someone who would succeed in everything they put their mind to without really having to try. I would participate in many extra curricular activities like gymnastics, aerobics and netball. I was a house leader and a person who was adored by all but the students. Growing up I was constantly bullied for the colour of my hair, who my family was and how much money they had or didn't have, many of my friends.. weren't really my friends. These experiences alone put a negative outlook on my life and I slowly started to lose motivation in my schooling and myself.

My first two years of high school were the scariest years of my life, it was a school where you were only accepted if you were smart, athletic or if your family had money. I went into high school bright eyed and bushy tailed, thinking I would fit in easily and breeze through everything. Oh how wrong I was. I soon realised that I wasn't actually taught how to learn. As soon as I didn't succeed in something, straight away I would give up. I was far behind the other students academically and the

teachers had me revising things I had never learnt before. The other students had known each other since they started school and they had certain expectations on how you had to act if you wanted to make any friends. I was what you would call an 'outcast'.

This led me to make a change about myself, I threw everything I believed in out the window and felt as if I was influenced to become a hateful person. I did this because I felt that I would be popular and make lots of friends when in reality it did the complete opposite. Involving myself in dramas and ongoing petty arguments turned me into a mean and nasty person.

At the age of 15 when I started NCEA level 1 I transferred to Waiau Area school where I was welcomed with open arms from both students and teachers, I made friends quickly and felt as if I had been here since I was five. But shortly into the school year my parents had an untimely messy divorce which led me to start acting out. I began to smoke, skip classes and I became everything I despised as a child. I continued to blindly act out as if consequences never applied to me, this led me down a deep, dark path where my mental health plummeted. I eventually lost all motivation in school and never really thought about my future. I was too focused on the now instead of what the decisions I was making would lead me to ...

Fast forward to NCEA Level 2, the year 2020. Not only was the year ruined with an ongoing pandemic, my Mum left her job and moved away. A family friend opened her home to me to board so I could stay where I had a job and finally at a school where I was happy. I am so grateful to have people around me who care. Moving out of home by the age of 17, learning to financially support myself while continuing to go to school was one of the hardest challenges I have ever taken on. I am currently a full time adult while part time school student. In my opinion I would

not wish it on my worst enemy. Whatever you do, do not wish to grow up fast. Though my life hasn't been all that, I would never trade my experiences for anything, I have learnt from the negatives and turned them into positives. The ongoing support of my teachers and fellow classmates have influenced me to be a brighter, happier person.

The past five years I've learnt to never take life for granted, people for granted, or things for granted. Forgive when you can, because life is short. Cheesy but true. The last three years in particular have been when I truly understood that. I have developed a stronger understanding of myself and others, including through the divorce of my parents and learning to be independent of myself. Though there were many tears I would never exchange my past for anything because these experiences have influenced me to keep going even when I couldn't go anymore. Dr Seuss once said "You have brains in your head. feet in your shoes. You can steer yourself in any direction you choose." I will always remember this saying hanging up in my English teacher's classroom along with many other quotes and pictures. I would stare at these pictures all the time when I wouldn't want to do my work. This quote reminded me that at the end of the day you are your biggest influence and to make decisions wisely. My advice to live a life less ordinary is to have fun, go on adventures with your friends, and participate in every opportunity you are offered. The "what if"s are not worth giving a second thought because in the fullness of time you'll never know the outcome of something if you never gave it a chance.

~ Marli Knapp, Year 13.



9 Cumnock Street, Wallacetown

P: 03 235 8967 M: 027 242 8109



E: mcmahondesign@outlook.com





Big or small!

Let us make it easy with an Events Package custom designed for you!

Included in every package is a 30 minute initial consult where we will discuss your project, goals, theme and budget to come up with a tailored graphic design and printing package perfectly suited to you, and your event.

This could include:

- An emblem/logo for the event styled to your theme -
- An advertising pack for print and/or online to promote your event -
- Save the Date Cards & Invitations with custom printed envelopes -
- Tickets, Raffle Tickets/Boards, Entry Forms, Flyers, Posters, Banners -
- Seating Charts, Stickers/Seals, Gift Bags/Boxes, Cake Toppers -
- Name Tags, Table Cards, Guest Books, Photo Boards, Certificates -
- Thank You Cards and much more...

Place an order with us for your customised Events Package before **THURSDAY 31ST MARCH 2022** and get **15% OFF** the total value of your order

*Applicable only to orders totalling over \$200.00 excluding GST and delivery.

We offer a wide range of digital printing and graphic design solutions.

- | | |
|---|--------------------------------------|
| LOGO/EMBLEM DESIGN including full branding packages | CALENDARS - BOOKLETS - REPORTS |
| ADVERTISING & SIGNAGE DESIGN | NEWSLETTERS - MAGAZINES - CATALOGUES |
| SOCIAL MEDIA GRAPHICS & EMAIL SIGNATURES | ALL OFFICE STATIONERY |
| PHOTO EDITING & CUSTOM ART | PERSONALISED STATIONERY & CARDS |
| CERTIFICATES - PRIZE CARDS - PROGRAMMES | PRESENTATION & PROMOTIONAL ITEMS |
| WEDDING & EVENT STATIONERY | AND MUCH MORE... |

Get in touch with us today for your free consultation and quote!

PLEASE HAVE YOUR ARTICLES, NOTICES,
OR UPDATED ADVERTS FOR
THE WESTERN WANDERER
SENT IN BY

20th of November

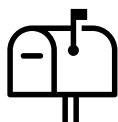
(for December's Issue - don't forget we don't
publish an issue in January - so get your
January notices in the December Issue)



yourwesternwanderer@gmail.com

OR

DROP A NOTE IN THE MAILBOX AT
18 Orawia Road, Tuatapere



**For Landscaping,
Land Maintenance,
Gravel Supply & Cartage**

**GRADES OF CRUSED & SCREENED GRAVELS,
ALKATHENE LAYING, ROOTRAKING,
FARM TRACKS, DAIRY LANES**



**ELEVATOR SCRAPER,
BOBCAT & ATTACHMENTS,
LANDSCAPING, TRENCHING AUGERS**

Supplies of Gravel Ex Waiau River

River Run Screened Grades Concrete Gravel Pea Gravel
Rejects for soak holes Crushed - AP30 & AP65
Pebbles for Sheep and Cattle yards and calf sheds
Fines suitable for cow lane capping

**K J SUTHERLAND
GRAVELLING &
AGRICULTURAL CONTRACTOR**

**2475 OHAI-CLIFTON H/WAY
ORAWIA RD2 OTAUTAU 9682**

Ph 0274 367 934

IN AND AROUND THE COMMUNITY

Early History of Central / Western Southland

*Suzie Best,
Head Historian/Archivist/Genealogist/Researcher /Author*

Current project - "Between River & Stream - Tale of a
Town" (The first 50 years of Ōtautau)



Several years ago, being a local district history geek, I started researching and compiling an early history on Ōtautau town and district. This was after discovering while working at Ōtautau Museum, that not much was written about its early days. In doing so, I discovered quite a different story to that told in most prior publications. The many thousands of pages of research I have now compiled over the years and are still collecting, are now being collated into a book, which is due for release at the end of December 2022, in time for the upcoming 150th Commemoration of the Ōtautau Township.

This is a community effort and the work is all voluntary. The idea is that the funds raised from the sale of the book, will be able to be distributed back to those historical collections institutions who helped create it, such as Te Hiko Museum, Waiau Memorial Library, Ōtautau Museum and Ōtautau Promotions Group who are sponsoring some costs. If anyone else would like to sponsor the cost of buying the rights to publish an old photograph or map from Government Institutions, this is possible and appreciated, there are a number of costs involved in creating the work and getting it to the publishing stage of things. If you have research, writing or other skills you would like to offer to the project, please also get in touch, as many hands make light work.

The town does not appear to have grown up in the 1860's after all, with the first ever section there only being sold in Dec 1872 just after the township survey was done. This survey showed only one building on it, the Ōtautau Accommodation House, built by Caleb Small. Further digging revealed that in 1879, just before the railway came through, only nine occupied houses were in the fledgling township. After many thousands of hours of cross-checking council and government records, written and photographic accounts, the earliest inhabitants of the township are thought to have been from the following families:

- Roderick and Margaret Campbell (and later on, his brother Murdoch),
- Henry Boston and Margery Cassels (from a well-known Riverton family),
- Richard Daniel (nephew of Theophilus - another well-known Riverton family),
- James and Harriet Dodds (nee Tilyard - her brother Joseph lived in Riverton, her brother-in-law was Caleb Small from the Waiau),
- William and Jane Lawson (parents of Jessie Gardiner of Waiau),
- Dan and Johanna Lynch (cousin of Thomas from Riverton),
- Possibly someone McDonald or MacDonald (but only referred to as "Mr."),
- Roderick and Margaret McIvor,
- Matthew and Elizabeth Newsome (later of Thornbury),
- Thomas and Julianna Price (parents of Fred Price of Waikiwi),
- James and Ellen Quin (his brother was Charles Quin of Limestone Plains),
- John Smith of the Ōtautau Railway Hotel,
- William and Sarah Walker (nee Bath) and his brother TH (or Harry) Walker who married Lucy Boniface of Riverton first.

Please, if you are a descendant from any of the above families, if you have friends who are, or if you have connections to the early area and/or memorabilia from the Central Western Southland District, can you please get in touch with researcher/historian and author of this book:

Suzie Best

email: riverstream@xtra.co.nz or

phone: 027 211 4675 or see here for info:

<https://www.facebook.com/TaleOfATown/>

Ngā mihi.

K.J. Sutherland Contracting Bobcat T190

**With attachments: Landscape Rake,
Augers and Trencher**

**Suitable for all landscaping, shed and yard
maintenance**

Muck-spreader and tip trailer available



**PHONE KEVIN
027 367 934 / (03) 225 5716**

MILLARS

- PLUMBING
- GAS FITTING
- DRAINLAYING
- LICENSED BUILDER

Ph 027 4340 705 or 03 225 8567



We specialise in:

Resource consents

Farm environmental plans

Policy advice

DOC concessions

Landscape plans & assessment

We take care of the paperwork,
so you can do what you do best!

Sonya: 027 5050 077

Rebecca: 027 4246 129

www.slwp.co.nz

Locally owned & operated



Agricultural Contractors servicing Western Southland and beyond.

BALAGE - SILAGE - GROUNDWORK - FEED TRADING
Nigel 021 226 6156 / fowlecontracting@gmail.com



Tim and Superior go the extra mile

Are you frustrated with the lack of service from your local fertiliser consultant, peddling the same advice year after year regardless of your production outcomes, environment and sustainability?

Give **Tim Adcock** of Superior Fertiliser Specialists a call. He will bring a whole new meaning to service and client/advisor relationships.

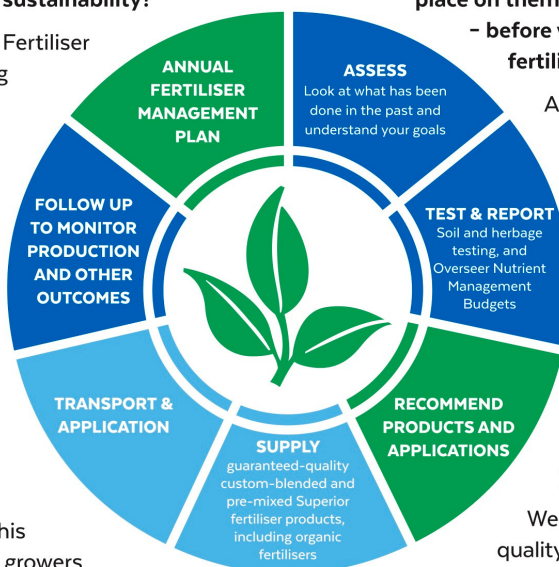
Tim is a key member of the highly skilled Superior team totally committed to helping you develop healthier, more productive soils and plants.

We form a specialist fertiliser company that provides high quality advice and products at competitive prices. We have been doing this for South Island farmers and growers for just on 20 years.

Superior promotes a total soil care package. First, we get to understand the make-up, nutrient status and health of your soils, the demands you are going to place on them, and your production goals – before we apply one kilogram of fertiliser.

A comprehensive regime of vigorous soil tests will be undertaken and the results will provide the basis of a Superior Fertiliser Management Plan customised for your unique situation. This will complement your farm's Environmental Plan and provide the blueprint for an ongoing annual fertiliser programme.

We then supply guaranteed-quality solid fertiliser for your pasture and crops, monitor production and other outcomes, and update your Plans as required.



It's free to talk so don't hesitate to give Tim a call.
Phone 021 418 224



Tim Adcock
Fertiliser Advisor
Otago/Southland
021 418 224
tim@superior.net.nz

 FERTILISER SPECIALISTS
SUPERIOR
www.superior.net.nz

TUATAPERE SERVICE STATION

20 ORAWIA ROAD

PHONE: 03 2266475

WHITEBAITERS

We still have plenty of nets in stock along with Netting, waders, screens pulleys etc

RIDGELINE SPECIALS



Kid's tussock trousers

Sizes 4-10

Only \$20.00



Forestry spec t shirt

Only \$50.00

HARDWARE WE STOCK

METRIC BOLTS & NUTS * IMPERIAL NUTS & BOLTS * GUTTER BOLTS

DYNA BOLTS * COACH BOLTS * TEK SCREWS * WOOD SCREWS

SELF TAPPING SCREWS * HINGES * BRACKETS * CATCHES



NZ TRANSPORT AGENCY
WAKA KOTAHI

WE CAN PROCESS ALL YOUR

REGISTRATIONS

ROAD USER CHARGES

CHANGE OF OWNERSHIPS

VEHICLE EXEMPTIONS

CANCELATION OF REGISTRATION

CHANGE OF HUBOMETERS

