



WESTERN Wanderer

Tuatapere | Clifden | Orawia | Blackmount | Monowai | Colac Bay | Orepuki

Cover Art Work Credit: Hayley Landreth - Humpridge

Issue 238

At a glance ... what events are on this month?

OCTOBER 2021

MONDAY	TUESDAY	WEDNESDAY	THURSDAY	FRIDAY	SATURDAY	SUNDAY
				1 End of Term 3 Syd Slee Charitable Trust Funding Applications Open	2 Second Hand PopUp Shop TPC Main Rd 10-2pm School Holidays Start	3 Tuatapere Pool Season Open Day 2pm-4pm Tuatapere Domain Board AGM Domain Rooms 10am
4	5	6	7 Tuatapere Amenities Trust AGM WTCC 2:30pm	8	9 Second Hand PopUp Shop TPC Main Rd 10-2pm	10
11	12 Tuatapere Tennis Club Meeting Tui Base Camp 7:30pm	13	14	15	16 Second Hand PopUp Shop TPC Main Rd 10-2pm Market Day 10-2pm TPC Main Rd	17 School Holidays End
18 Tuatapere Community Medical Services Trust & Waiau Health Trust Ltd AGMS 7pm - 69a Orawia Rd, Humpridge Track Great Walk Project w/ DOC WTCC 12-3pm or 5-7pm	19	20 Notices, events, adverts etc in to the WW for Nov. Issue Tuatapere & Districts Promotions Inc Committee Meeting 7pm WTCC	21	22 Hauroko Valley Primary School Pet Day	23 Second Hand PopUp Shop TPC Main Rd 10-2pm	24
25	26	27	28	29	30 Second Hand PopUp Shop TPC Main Rd 10-2pm	31 Halloween Syd Slee Charitable Trust Funding Applications Close
1	2	3	4	5	6 Second Hand PopUp Shop TPC Main Rd 10-2pm Tuatapere Highland Piping & Dancing Society Competitions RSA Hall	7

Special thanks to



SEE INSIDE FOR MORE DETAILS!
Want your event here? Let us know at
yourwesternwanderer@gmail.com

COMMUNITY NOTICES & EVENTS

HANDY PHONE NUMBERS

EMERGENCY

POLICE / FIRE / AMBULANCE: **111**

MEDICAL CENTRE: (03) 2266 123

TUATAPERE POLICE STATION:
(03) 2269 020

TUATAPERE COMMUNITY WORKER:
027 757 5983

HAUROKO VALLEY SCHOOL OFFICE:
(03) 2266 753

WAIU AREA SCHOOL OFFICE:
(03) 2266 285

TUATAPERE CEMETERY TRUST:
(03) 2266 065

CHAMBERS SERVICE STATION:
(03) 2266 654

TUATAPERE SERVICE STATION:
(03) 2266 475

TUATAPERE FOUR SQUARE:
(03) 2266 898

TUATAPERE OUTDOORS & HARDWARE:
(03) 2266 363

Want to know more about Hump Ridge Track becoming a Great Walk?



Save this date in your diary - Monday 18 October 2021.

Kia ora koutou katoa!

You are invited to come along to the **Waiau Town & Country Club** to meet the team involved in the Hump Track Great Walk Project and hear about the progress and plans of the project.

There will be representatives from the Department of Conservation (DOC) as well as our partners and groups involved in the project.

There are two opportunities for you to know more (and ask questions):

- a relaxed drop-in session – come anytime between 12-3pm for a chat.
- a structured presentation session - starting at 5pm and finishing approx. 7pm

Both sessions are open to anyone in the Tuatapere community and wider Western Southland District - everybody is welcome - bring your whānau, your mate, your neighbour!

We look forward to meeting you and sharing the latest news about the project.

This event will follow the COVID-19 Alert Level guidelines in place on the 18 October. This includes any restrictions on numbers attending events and the use of public venues

Any enquiries about this event can be sent to the project team by emailing

HumpRidgeGWP@doc.govt.nz

WE'RE LOOKING FOR LOCAL CONTRIBUTORS!

Are you interested in being a regular or semi-regular contributor of content for the Western Wanderer?

We're looking for people who would like to provide a short article/piece of reading for each monthly issue.

(It doesn't have to be every month - we can be flexible!)

Email us at **yourwesternwanderer@gmail.com**

or drop a note in the mailbox at 18 Orawia Rd, Tuatapere.



TUATAPERE PLAYGROUP

TERM 3, 2021 LEARNING PLAN

THEME: 'OUT THERE DOING IT' — THE NATURAL WORLD

TE WHARIKI PRINCIPLE FOCUS: FAMILY & COMMUNITY

TE WHARIKI STRANDS FOCUS: CONTRIBUTION & EXPLORATION

Date	Theme	Activities
30 th July	Red, Black & White Fancy Dress Day -Fundraising for the Southland Charity Hospital 	-Wear something red, black and white to playgroup. If you can bring along a donation to go towards the Blair Vining Southland Charity Hospital. We will be doing some red, black and white themed activities!
6 th August	Responding In an Emergency - St John's Educator to visit	-Alan Reilly the educator from St John's will be visiting and teaching the children about how to respond in an emergency situation.
13 th August	REAP Visit 	-Maree Day from Southern REAP will be visiting us with all her awesome activities.
20 th August	Goodbye Winter 	-Make fake snow -Make penguin & snowmen themed marshmallows to eat
27 th August	Super Spring Science	-Make a cloud in a jar -Make Grass head Men
3 rd September	Our Fabulous Fathers -Fathers Day	Make gifts to give to our Fathers or other special people in our lives on Fathers Day.
10 th September	Cupcake Cuteness -Welcome Spring 	-Make Lamb cupcakes to celebrate the start of Spring.
17 th September	Cool Conservationists -Conservation Week	-Make some bird feeders and take them home to put in our gardens to feed the native birds.
24 th September	Delightful Dairying -Calf Visit	-Visit to Jenkins Road Dairies to see the calves & cows.
1 st October	Rabbitte Ranch Visit - End of Term Trip 	-A visit to Rabbitte Ranch in Invercargill to see all the baby animals and ride the pony and donkey. Following this we will go to Chipmunks for a play and lunch!

What is a School Board of Trustees?

Waiau Area School Board of Trustees

Dear Parents and Caregivers

Every state and state-integrated school and kura in New Zealand has a board of trustees. Our school board is responsible for our schools performance and ensuring that all legal requirements are met.

The Board:

- Is accountable for student achievement.
- Sets the vision for the school.
- Ensures the school complies with legal and policy requirements.

Waiau Area School Board of Trustees are the governors of our school, they provide strategic leadership and direction and also ensure that plans and targets are developed, monitored and reviewed. They work in partnership with our community, principal, teachers, support staff, and the government to establish the best possible outcomes for all our WAS students.

Our Principal, Andrew Pardoe-Burnett is the board's Chief Executive in relation to the control and management of day-to-day responsibilities at Waiau Area School.

Serving as a member of an elected board can be extremely satisfying. It enables you to make collaborative decisions and learn more about your school. There is training available and you certainly grow as a person through your experiences working as a BOT member.

As Parents/ Caregivers and the wider community, you can be nominated for election to our school Board. You will need to work well in a team, ask challenging questions and have good communication skills. Elections are held tri-annually so a term for a Board member is three years.

You can also find more information at:

<http://www.trustee-election.co.nz/becoming-a-trustee>

Our next elections will be held in April 2022.

Our Returning officer for these elections will send you out nomination forms in the new year, if you are interested in joining our Board.

If you would like to attend a meeting to see what goes on or you have any questions you can get in touch with our Board secretary at: botsecretary@was.school.nz

Kind regards.

COMMUNITY NOTICES & EVENTS

It's that time of year again ☺

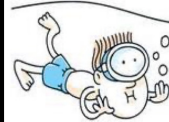
Tuatapere Pool Season

Open Day

Sunday 3rd October 2021

(Mark your diaries now)

2pm till 4pm



Get your season ticket on the day or in the week from Monday 27th September until Sunday 3rd October and receive \$10 off. (Payment needs to be showing in bank account to receive discount)

Season Ticket Prices are as follows:

Family ticket \$180
(Immediate family living in one household)

Buddy ticket \$180
(Two unrelated adults living in separate households (not including family))

Senior Citizens Buddy ticket \$150
(Two unrelated senior citizens living in separate households)

Access Tag \$15
(one-off or refundable on return)

All prices exclude an Access Tag which is purchased separately

SAVE THE DATE!



Sunday 14 November 2021

10:30am start

5-16 year old age groups, open and pre-school
Individual or Team entries

Prize to the school with the most entries!

at the Tuatapere Community Pool
Orawia Rd, TUATAPERE



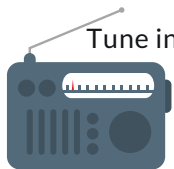
For more information check out our facebook page OUT WEST TUI TRYathlon, email OutWestTuiTryathlon@gmail.com or call in to the Tuatapere4Square to pick up an entry form and information.

Tuatapere Community Pool Fundraiser



WAIU AREA SCHOOL
Year 1-13 Education

Live to LEARN, LEARN to Live



Tune into Tuatapere's very own Radio Station

88.2 FM - Tui FM!

Hits of the 80's & 90's and today's current music!

COMMUNITY NOTICEBOARD

TUATAPERE DOMAIN BOARD AGM

To be held in the Domain rooms on

Sunday 3rd October 2021 at 10.00am.

If you have an interest in the future of the domain please attend.

Apologies to David Norman or Shirley Crack

TUATAPERE AMENITIES TRUST AGM

To be held at Waiau Town & Country Club,

Thursday 7th October 2021 at 2.30pm.

All welcome!

TUATAPERE TENNIS CLUB

Meeting to be held at Tui Base Camp on Tuesday

12th October, 7.30pm to discuss the future of

this club. This club has only been existing for

the last ten years with 8 – 10 players playing

social tennis. If you want to see this club get

some more life come along to the meeting or it

will be dissolved. For more information contact:

Christine **027 5498720** | Debbie **027 5255052**

TUATAPERE COMMUNITY MEDICAL SERVICES TRUST AND WAIU HEALTH TRUST LTD - AGMS

Annual General Meetings will be held on

Monday **18th October 2021 at 7:00pm** for

Tuatapere Community Medical Services Trust

followed by Waiau Health Trust, at the

Day Activities Room, Maternity Hospital

69a Orawia Road, Tuatapere.

SYD SLEE CHARITABLE TRUST

Applications for the 2021 funding round will

open on 1st October and close on 31st October, 2021.

An updated guide sheet and application form can be requested by emailing ssctrust17@gmail.com

4 or by phoning Nicky Baker on (03) 225 5094

SALVATION ARMY FAMILY STORE TRUCK

The Salvation Army Family Store Truck will come out and collect large amounts of your pre-loved furniture & other household items. This service is free.

Please call the store to organise your visit on **03 214 5380**



Family Store

Donate. Buy. Help.



familystore.org.nz

TUATAPERE HEALTH & GIFT SHOP - Riverton Pharmacy

We now have two courier drops for prescriptions for our Tuatapere customers:

1:00pm and 4:45pm.

The Health & Gift Shop is open from 12:30pm – 5:30pm.

If we can help in any other way, please contact Riverton Pharmacy **(03) 234 8515**



COUNTRY CORNER CRAFTS

Come in and browse and see what we have to offer. Hats, scarves, children's knitwear, cards, jewellery, woodware, sewing, jams, pickles, sauces, etc.

Tuatapere souvenirs "On Natures Edge" logo are always available.

Is anyone interested in joining to sell their crafts? You are more than welcome to contact us.

Want to volunteer your time & work in the Craft Centre – let us know! It's a great way to meet people! If you wish to view the shop and it is closed, please ring the ladies below to open it for you.

Louise Greber (03) 668 6001 or

Lyla Sherriff (03) 226 6187

COMMUNITY NOTICEBOARD

TUATAPERE HIGHLAND PIPING & DANCING SOCIETY

The Tuatapere Highland Piping & Dancing Society committee have decided to postpone the 65th celebrations until a later date when things maybe more settled.

We still hope to host our competitions on the **6th November**, at the RSA Hall. All welcome!

TUATAPERE PRESBYTERIAN CHURCH POP UP SECOND-HAND SHOP

The Pop Up Second Hand Shop is held from 10am to 2pm **every Saturday** of the month in the Tuatapere Presbyterian Church Hall, Main Road, Tuatapere. All welcome.

**POP UP SECOND HAND SHOP
EVERY SATURDAY
10am to 2pm
QUALITY GOODS - AFFORDABLE PRICES**

Come and see the large selection of items for sale. Fundraising for the church. Donations of clean, good quality goods gratefully accepted.

Want to sell some of your own goods?

Book a table or talk to me for other options.

To donate goods, book a table or any queries please phone or text **Carol Diack 021 110 1835**

TUATAPERE PRESBYTERIAN CHURCH MARKET DAY

The church market is held from **10am to 2pm every 3rd Saturday of the month** in the Tuatapere Presbyterian Church Hall, Main Road, Tuatapere. All welcome.

**MARKET DAY
SATURDAY 16th OCTOBER
10AM - 2PM
COME AND SEE WHAT'S NEW!**

Come and see the various crafts and local produce. Enjoy a cup of tea or coffee and something to eat.

To book a table or any queries please phone or text **Carol Diack 021 110 1835**

WAI AU VALLEY PRESBYTERIAN CHURCH

Services for all ages! Every Sunday at 10.30am. Tuatapere Presbyterian Church, Main Street, Tuatapere. All welcome to join us.

NEED A JP?



The following Justices are available by appointment:

Tuatapere

Keri Potter 027 526 3137
Donald Egerton 027 432 5407

Te Waewae Bay

Shirley Whyte 027 504 5220

Blackmount

Nicky Baker 0276435880

WESTERN SOUTHLAND WOOLCRAFT GROUP

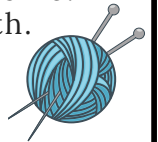
Spinning, Felt, Weaving, Knitting, Crochet. Other crafts welcome!

1st Wednesday of the month.

10am - 3pm. BYO Lunch.

For details please contact:

Helen Todd 022 378 9743



TUATAPERE & DISTRICTS LIONS CLUB PROJECT



SUPER DIRT

Super dirt bags are now weighed so more in each bag!
\$8 per bag - ready for your garden!

Super dirt can be collected from: Cracks Yard, Grove Burn Road, in the mornings Monday to Friday. Weekends by arrangement.

Delivery by arrangement - (but not guaranteed)

Phone Trevor (03) 225 5864 or Stephen (03) 226 6817



TUATAPERE COMMUNITY WORKER

Room 5 Medical Centre
69A Orawia Road

Monday - Thursday 10am to 3pm

Keri Potter 027 757 5983

Email: tcworker@xtra.co.nz



WAI AU MEMORIAL LIBRARY

Library Hours: Fridays

10:00am - 11:30am

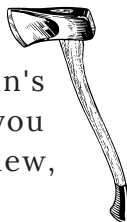
2:30pm - 4:00pm

7:00pm - 8:00pm



The Wi-Fi is available free to all library members. Just ask one of our friendly volunteers to help you set up your device.

TUATAPERE BUSHMAN'S MUSEUM



Orawia Road. If the Bushman's Museum is not open when you have visitors who wish to view, you can contact:

Lindsay Faulkner (03) 226 6650 to arrange a suitable time.

TUATAPERE ENVELOPES

Envelopes printed with the "Tuatapere on Natures Edge" Logo can be purchased at Country Corner Craft Shop 1A Orawia Road **Cost \$3.00 per 10**



ESSENTIAL OILS 100% PURE GIFTS OF NATURE
Florals Trees Plants Herbs Spices Citrus

To Learn More, phone or text your local Wellness Advocate
Carol Erskine Papatotara 0274 599 654



TUATAPERE MAINLY MUSIC

A pre-school music and movement-based playgroup.

Mondays during the school term at the Tuatapere Presbyterian Church Hall.

Music session starts at 10am followed by a time of morning tea and play. \$2 per family.

Morning tea is provided for all.

New families welcome!

Find us on Facebook:

"Tuatapere Mainly Music"



For more information contact
Heidi 022 315 3326

COMMUNITY NOTICEBOARD

MONOWAI/BLACKMOUNT VILLAGE GARAGE SALE

Monowai Village and the Blackmount Community is planning to have a village garage sale on **Saturday 13 November** at Monowai Village, Turbine Drive.

Would you like to join us with a car boot sale?

The car boot sale will be \$10 per car and proceeds from this will be donated to Furever Homes Pet Rescue.

If interested please contact

Merrill Laurence on (03) 225 8267

TUATAPERE PLAYGROUP

23B Orawia Road. **Friday Playgroup 9am - 12pm**

All parents and children welcome!

Children's morning tea is a packed lunchbox from home at Playgroup (as opposed to a shared morning tea).

Any queries please contact:

Gemma Bennett 022 040 3368 Alice Harris 027 270 0363

CLIFDEN PLAYGROUP

45 Otahu Eastern Bush Road.

Every Wednesday (during School Term) 9:30am - 12:30pm.

All mothers and children welcome.

Bring packed lunchbox for your child's morning tea.

Any queries to: **Sarah 027 699 5234**

TUATAPERE COMMUNITY STRENGTH & BALANCE CLASS



Would you like to support this class by helping facilitate more regular classes? Full training and support provided.
Contact **Courtney on 021 799 528**

TUATAPERE SCOUTS



Are you and your family looking for something that will foster personal development, create a sense of community and at the same time challenge you or a school age member of your family? Have you thought of joining Scouts? At Scouts we have Kea's for children aged 5-7 yrs, Cubs for children aged 7- 9 1/2, Scouts for 9 1/2 -15 yrs. We also have a need for leaders so we can deliver our programmes effectively. Please contact:

Leader Anne-Marie **027 688 5828**

6 Group Leader Quinton **027 223 4842 or (03) 226 6969**

COMMUNITY NOTICEBOARD

TUATAPERE TOY LIBRARY

Tuatapere Toy Library has been a toy swap/hire service provided to the young families of Tuatapere and surrounding since 1989. The purpose is to create opportunities for the little people of our community to have accessibility to toys. A small contribution of an annual membership allows families to join the group and have access to the toys.

For more information or questions please text or ring Nathalie Pahl on **027 4759 075**



SENIOR CITIZENS

Senior Citizens is a group of over 60s that meet every **Friday afternoon at 1pm** at the rooms behind the RSA Hall.

We are always looking for new members so if you would like a fun afternoon playing bowls, cards or just catching up with friends, come and join the group.

Contact: Olive Bennett Ph **(03) 2266 477**

SOUTHLAND COMMUNITY LAW CENTRE

Free legal information and advice for the community of Southland.

2nd Floor, Cue Building, 33 Don Street, Invercargill. Phone **(03) 214 3180**

Freephone: 0800 550 800 (outside Invercargill city only)



SOUTHLIFE Community CHURCH

Steve & Sharon
are Pastors
and we are an area church.

MISSIONS
"BRIDGE CHRISTIAN MINISTRIES UGANDA"

We warmly invite you to come along to one of our services. It would be great to see you

Sunday Service
10am Truro St, Orepuki

We believe in Community and endeavour to show this the best we can by the way we care and serve!

TUATAPERE AMBULANCE

Did YOU Know?

The Tuatapere Ambulance is a funded service by the Tuatapere Lions Club, for the residents of Tuatapere & Districts.

Should you receive an account for this service from St John, please forward it immediately to:

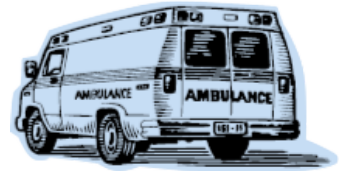
**The Treasurer
Tuatapere Lions Club
PO Box 47**

Tuatapere

Sometimes we experience difficulty in receiving the invoices for YOUR trip - so PLEASE do forward them on to us.

Thank you!

**Tuatapere Lions Club Charitable Trust
Ambulance Committee**



WESTERN SOUTHLAND HEALTH SHUTTLE

The Western Southland Health Shuttle Service travels from Otautau, Ohai, Nightcaps, Tuatapere, Riverton - covering all of Western Southland. We also connect with the Invercargill-Dunedin shuttle.

The Western Southland Health Shuttle operates Monday - Friday (excluding Public Holidays).

Bookings are required by 3pm the day prior to transport.

Ph: 0800 103 046 to book.

Please book as soon as you receive your appointment.

TUATAPERE VOLUNTEER FIRE BRIGADE

We're on the lookout for members to join this rewarding organization. We are looking for persons who are, ideally, available throughout the day.

If you think that you would like to try this (sometimes lifelong) commitment, then please feel free to come and try it!

We train on Tuesday nights at 7:30pm during daylight saving and 7pm through the winter months.

We look forward to meeting with you.



Tuatapere Community Worker Support Trust

Christine Murch, Chairperson



GPSOS Alarms has gone into liquidation. I know a number of people have these alarms in Tuatapere. Two Administers have started a new company GPSOS 2021 Monitoring Service if anyone has these alarms you have to fill out new AP'S and Information forms so please contact Tracey at

hello@gpsos.co.nz or phone 0800 115 906

Keri Potter also has the paperwork at the office of the Tuatapere Community Workers Support Trust.

We also had our AGM finally after lockdown.

Our committee members are:

Christine Murch - Chairperson 0275255538

Carol Diack - Vice Chairperson

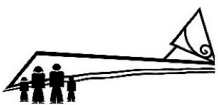
Jane Church - Treasurer

Avril Johnston - Secretary

Isobel Green

Jackie Moir

We are still looking for a couple of new members. If you think you would be interested please give me a call. Without these lovely ladies above we cannot employ a Community worker in this area so thank you ladies for another great year!



Tuatapere Community Support Worker Trust
Community Support Worker - Keri Potter
Medical Centre
Room 5 / 69A Orawia Road
TUATAPERE 9620
Phone: 0277 575 983

ADDRESS NUMBER PLAQUES

Address number plaques can now be ordered through the Tuatapere Community Worker Support Trust.

These can be clearly seen anywhere day or night.

These number plaques are for properties. As we continue to improve the number stencils to give maximum display for the different sized numbers, we now have a range of stencils which we use and we would prepare the number plaque rather than send out blind stencils for the customer to prepare.

Each number must be specific and correct for this purpose.

To order please call Keri Potter on Mob 0277575983.



Tuatapere Freight

LOCALLY OWNED & OPERATED

RUNS MONDAY TO FRIDAY
WEEKENDS BY ARRANGEMENT

Phone Brandon

027 436 4360



Shearing

magazine

Des Williams (editor)

Tel 07 839 2891 : Mob 0274 833 465

Email : shearingmag@xtra.co.nz

Member NZ Guild of Agricultural Journalists and Communicators (Inc)

LAST SIDE PUBLISHING LTD

PO Box 102, Hamilton 3240, New Zealand

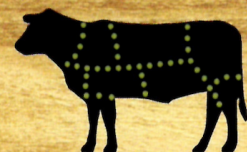
RAW FARM HOMEKILL

Wayne & Rachel Saunders
Qualified Butcher

027 457 6350

rawfarming@yahoo.co.nz

82 Clifden Highway
Tuatapere



Cut up the way you want

Beef

Pork

Sheep

Venison

Other game meats

Traditional Smallgoods

Waiau Squash Club

Debbie Fowle



Well we just managed to get our Club Champs finals in before we were once again popped into lockdown. This year we managed to field 2 ladies teams and 2 mens teams in the Central Western Competition and despite a few injuries managed to get through the season smiling still. We have an eager bunch of new keen ladies, hopefully still as keen in 2022, thanks to Nic Mitchell for making their experience fun & enjoyable.

Our 2021 tournament didn't get going due to lack of entries, but holding a quiz at Basecamp certainly made up for this. We can't thank our members and the community enough for getting behind this awesome night raising nearly \$3000 for our little club. A special thanks once again goes to our quiz master Tim Boyle amazing job done. And to our generous sponsors Tui Base Camp, PGG Tuatapere, Neat Cut, Tuatapere Service Station, Kylie Greer, Dale Egerton, Lindsay & Dixons, Waiau Hereford, Advanced Ag, Waiau T&C, Helen Hall, Fowle Contracting & our very generous donation from Pikoburn Stud - thank you so much - we really appreciate your support.

Our Club Champs were held early August & a fantastic atmosphere in the club rooms. Also a great supper provided by the Waiau T&C - thanks Gary. There were some fantastic matches but winners on the night were:

Mens A Grade: **S Egerton**
Mens B Grade: **K O'Brien**
Mens Most Improved: **R Patterson**

Ladies A Grade: **N Mitchell**
Ladies B Grade: **K Greer**
Ladies Most Improved: **K Egerton**

That's a wrap for 2021, hope to see you all in 2022 starting with a few social nights more information will follow early next year. If you are keen on joining don't hesitate to contact one of our club captains Sam Egerton or Nicola Mitchell.

Lastly to our committee - we can't thank you enough for all your dedication. We are only small but we get things done. Roger President & handyman, Kate bean counter, Terry for keeping us hydrated, Nic & Sam for organising everyone, Helen for keeping us neat & tidy and everyone else who contributes - we thank you! Little clubs need people like you!

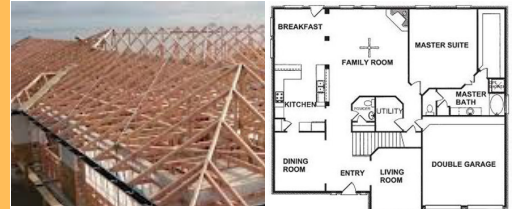
WANTED: DRIVE-IN MILKER PAHIA

Clean herringbone 180 cows 24 aside
No experience needed - happy to train
right person
Phone Tony (03) 234 5154

PAUL ANDERSON BUILDER

AVAILABLE FOR ALL YOUR
BUILDING REQUIREMENTS.

NO JOB TOO SMALL.
COMPETITIVE RATES.
REFERENCES AVAILABLE!



Mobile: 027 890 3602

thetakis@outlook.com

Get your car washed, dried and windows cleaned - Price arranged on request!

Contact: Rex Hibbs Flat 1/26 Orawia Rd,
Tuatapere

TUATAPER HANDYMAN SERVICES

Barry Bennett
(03) 226 6730

- **Painting - Interior/Exterior**
- **Waterblasting**
- **Spider & Fly Spraying**
- **General Repair Work**
- **Lawnmowing**
- **Weed Spraying**



Waiau Town & Country Club

**Meals (homemade goodness)
available Thurs, Fri, Sat & Sun
from 4pm to 9pm.**

Family Friendly | Happy to cater for dietary requirements.
Please pre-book for groups of 8 or more.

Club Opening Hours:

Mon - Thurs 4pm till close.

Fri 3pm - close.

Sat Noon - close.

Sun 3pm - close.

Book now for functions/birthdays etc

We can cater! Just call Gary to discuss options.

Gary - 027 698 8360

What's on at the Club:

***STEAK NIGHT** – every Thursday night
only \$25 for a delicious steak meal.

*** MEMBERS DRAW & RAFFLES**

drawn every Friday night! Approx. 7.30-8.30pm.
Come in for a bite to eat and a drink, who knows
you might be the lucky one to win \$£!

**Keep an eye on our Facebook Page for
more details on upcoming events**

Annual membership/subs due 1st July - PAY NOW!

Annual membership is \$50 or \$30 for pensioners.

*Pay & collect at the club or pay online
and we'll post your card out.*

*Everyone welcome to become a member, just pop in
or call the club.*

Phone: **03 22 66 489** | Address: 41 King St Tuatapere
Email: waiautcc@gmail.com | Facebook: [facebook.com/waiautcc](https://www.facebook.com/waiautcc)
| Courtesy Van Available |

We look forward to seeing you!



WAIAU AREA SCHOOL

Year 1-13 Education

Live to LEARN, LEARN to Live

Kia ora Western Wanderer Readers!

There are several aspects of WAS which I'll quickly cover - potential job opportunities, promotions, celebrations and student achievement. As always, please pop into school or give me or Charmaine (in the office) a ring if you need further information or would simply like to chat.

Our extremely capable caretaker/property manager, John, is unfortunately retiring and heading back home to Brisbane. This creates a job opening for a team player who has a good work ethic and takes pride in what they do. This job, potentially, could be full-time or split into part-time positions depending on suitable applicants. Please make contact with me directly if this interests you.

Over the last couple of years, WAS has been very fortunate to have 'Free Lunches in Schools' (FLIS) provided by Koha Kai. Next year, we are aiming to move from an external to an internal FLIS model. This means there will be job opportunities. Therefore, if you have experience perhaps in catering, preparing meals, budgeting, nutrition, working with others and have a good work ethic, then please get in touch with me. We'll be employing a person who will be in-charge of this initiative which will be, more than likely, a full-time position, depending on suitable applicants. We will be looking to employ part-time staff as well. This opportunity may also lead to senior students being trained as volunteers who also have the ability to earn credits through a hospitality class. If anyone has some advice, feedback or would like to be involved in the planning then again please let me know.

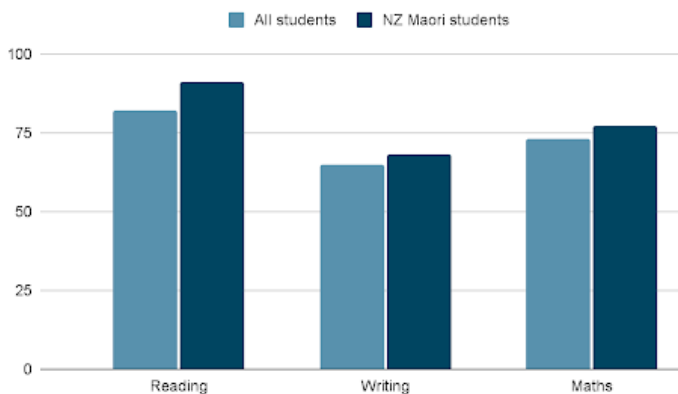
Congratulations to Malakai Mangion who is now a new student rep on the Board of Trustees (BOT). Malakai has taken over from our very diligent Holly Hammond. Elections occur every year. Our BOT are always welcoming new prospective members (can be parents, caregivers or community members) to

our team and encourage you to come along to our meetings to see if it's something you would like to be considered for. This is a paid position with plenty of professional development involved which stands most of us in good stead! Our scheduled meetings are:

November 8th & December 6th
starting at **6:30pm**

We are very proud of all our students. Their attitude towards WAS has increased enormously where students are continuing to take real pride in their school. This is starting to reflect in our academic results and students taking more risks and responsibility. Here are some academic results prior to lockdown. A high majority of our NCEA students are also achieving where they should be and others tend to achieve at their own pace which is totally fine. This is the beauty of knowing our students and also providing them with plenty of Gateway and Star opportunities where required.

Students in Years 1-10 - Mid Year 2021 Results



Nga mihi, take care and keep safe.
Andrew PB

Alex Reid CONTRACTING

**Paddock Cultivation from
Ploughing to Sowing
Dry Hire available
Aerating
Direct Drilling
Ridging
Mulching**



Dairy Lane Maintenance

Tip Trailers • Vibrating Roller • 2 Tip Trucks

Sheep Conveyor

Drenching, Vaccination etc • 3 way draft

Large Skid Steer for calf shed cleaning, loading Muck Spreaders etc

4 Muck Spreaders • 16,000 litre Slurry Tanker
Pond Stirrer • Umbilical Slurry System



Rural Contractors
NEW ZEALAND

PHONE ALEX
0212775308 CELL
03 2255377 HOME

Waiau Star Rugby Club

Alice Harris

The club would like to thank the sponsors, the volunteers, the parents and the players who have made our 2021 season possible. It is with your support and commitment that we are able to run our wonderful club and we look forward to seeing you all again for the 2022 season.

The club AGM is the 6th of December, 7.30pm at the club rooms. We warmly welcome new committee members so please join us if you are interested.



COACHES + MANAGERS

The Waiau Star senior team are looking for expressions of interest for the 2022 season. We have a young, enthusiastic team, showing good signs with both development and dedication.

If you are interested, please contact

Blayne 027 631 7273 or
Pete 027 520 2753



INDEPENDENT MIDWIFE

ISOBEL DEVERY

*Caring for women throughout
Pregnancy, Birth till six weeks
Post Natal.*

*Choices for place of birth,
Home or Winton Birthing Units
or Kew Hospital.*

*Free pregnancy tests
available on request.*

**Phone: (03) 22668822
027 2267020**

©Peetara, EthicGraphics

Sewing and Mending Services Available

Experienced machinist offering fast, reliable service with very reasonable rates.

I will mend/make anything from zip replacements to curtain making - just ask! Free quotes and pick-up delivery service within Tuatapere.



Contact **Deborah**
(03) 226 6783 or 021 0305 667



DAGWOOD DAGGING

Available now to all new and existing customers for all your crutching requirements.

3 Stand or Single trailer available
7 days a week, wet or dry.



No job too big or too small.

Competitive rates

Jeff Chambers
027 3042 241



My all time favourite carrot cake recipe - loaded with grated carrot, crushed pineapple, crunchy walnuts and smothered in cream cheese frosting. This will become your favourite carrot cake recipe too!

My Favourite Carrot Cake Recipe

Ingredients - Cake

- 2 cups flour (I use 1 cup plain flour & 1 cup whole wheat flour)
- 1 ½ tsp baking powder
- 1 tsp baking soda
- 2 tsp cinnamon
- ½ tsp each ground ginger, ground cloves and nutmeg
- ½ tsp salt
- 1 cup brown sugar
- ½ cup white sugar
- 1 cup oil (canola or vegetable)
- 3 large eggs
- ¼ cup plain yoghurt
- 1 tsp vanilla extract
- 2 cups grated carrot
- ¾ cup crushed pineapple (with most of the juice drained)
- ¾ cup chopped walnuts

Ingredients - Cream Cheese Frosting

- 250g of cream cheese, room temperature
- 115g butter, room temp.
- 2 cups icing sugar
- 1 tsp lemon juice
- 1 tsp vanilla extract
- ⅛ tsp salt

Method

Preheat oven to 180°C and line a 20cm cake tin.

Whisk together flour, baking powder, baking soda and salt in a large bowl.

Whisk the sugars, oil, eggs, yogurt and vanilla in a bowl. Pour the wet ingredients into the dry ingredients and mix until just combined. Fold in the grated carrots, pineapple and walnuts.

Pour the batter into the prepared cake tin. Bake for 45 minutes. The cake is done when a toothpick inserted in the center comes out clean.

Remove the cake from the oven and allow to cool completely.

Cream Cheese Frosting

In a large bowl using a mixer, cream together the cream cheese and butter on high speed until smooth and creamy. Sift in the icing sugar and add the lemon juice, vanilla and salt. Mix on low speed until combined and then on high speed for 2 minutes.

To Assemble

Slice the cooled cake in half. Place the bottom half of the cake on the serving plate. Spoon half of the frosting on top and spread right to the edges. Stack the other half on top and spread the remaining frosting over top.

Refrigerate the cake for at least 30 minutes before serving. 13



* 13 Tonne Digger * 5.5 Tonne Digger * 2.7 Tonne Digger- dry hire or operated
 * Tip Truck * Bob Cat * Augers * Post Driver * Tree Saw & Hedge Trimmer
 * Tree Trimming * Post Driving * Fencing * Cleaning of Wintering Sheds * Site Clearance * Cartage * Graveling * Lane Maintenance * General Earthworks

For all enquiries and bookings please contact Lance or Alice Harris

Lance: 027 304 3714

Alice: 027 270 0363

Email: lanceharris533@gmail.com

Check us out on facebook- Harry's Machines

CHAINSAW SHARPENING

All chainsaw chain sizes precisely sharpened and rakers taken down accordingly, guaranteed results

Chain only \$10 Taken Off & Refitted \$13

Please phone (03) 2266940 evenings

WANTED TO BUY

Possum Fur, Hard deer, Antler, Deer Velvet.

Phone Leith 027 496 3721

WAIAU VALLEY SHEARING LTD







Simon de Vries
Julie Heaps

027 840 9867
03 226 6212

PUZZLE PAGE

Solve these visual word puzzles by looking for clues in the placement, colour or number of words!

1. 	2. 
3. PENNIES	4. back 
5. b bird b bird bird b b b b	6. 
7. MILONELION	8. Matter
9. funny funny word word word word	10. Not = Cent

Lynley McKerrow

Celebrant
Funeral and Marriage

P: 0272 974 767
E: nanamac60@xtra.co.nz

with care - with love - with dignity



DRAKE
PLUMBING & DRAINLAYING LTD

C: 0274 247 102
T: 03 225 8652
E: admin@drakeplumbing.co.nz

KIERAN DRAKE
Certifying Plumber & Drainlayer



BEN MCMASTER BUILDING


Ph: 027 202 7955
benmcmaster@live.com

- Licensed Building Practitioner
- Sheds, renovations & new homes
- Based in Western Southland

You dream it, we'll build it

September's Rebus Puzzle Answers

- Red in the face
- Green eggs & harm
- Backrub
- All thumbs
- Two left feet
- Black sheep of the family
- Big fish in a little pond
- Tennis shoes (10 issues)
- Long time no see
- All in a days work

1. FACE	2. EGG EGG HAM
3. BUR	4. THUMBS THUMBS THUMBS THUMBS THUMBS THUMBS ...
5. TEEF FEET TEEF	6. FAMILY SHEEP
7. po FISH nd	8. ISSUE ISSUE ISSUE ISSUE ISSUE ISSUE ISSUE ISSUE ISSUE
9. TIME 	10. DAYSALLWORK

Magic Squares

Fill in the grids so that each column, row, and diagonal add up the given sum

The sum is 15.

2		
	5	3

The sum is 60.

32		
		28
		8

FORDE SHEARING LIMITED

Available for all new and existing clients

For all your shearing and crutching requirements

Please phone Darin or Julie Forde

(03) 235 8853
027 229 7760



MR STEEL
TUATAPERE

PH: **027 276 6816**
MALCOLM

For all your engineering, steel fabrication and repair needs!

WAI AU HEALTH TRUST – October 2021

Medical Centre

September has been a busy month with the continuation of our COVID vaccination clinics.

Going into Alert Level 4 meant we had to move the vaccination clinic to the Waiau Town & Country Club to encompass social distancing requirements, we would like to thank the WTCC for allowing us to run this service there - it was the perfect place with plenty of space.

The vaccination clinics are now being held back at the medical centre and there are plenty of appointment slots available. Booking is easy and can be done by **phoning 0800 282 926** or by going online to www.bookmyvaccine.covid19.health.nz

Vaccinations are free and are one of the most powerful tools we can use against COVID-19, it helps prevent against COVID-19 related hospitalisations, severe disease & death. Getting vaccinated not only protects you and your family from COVID-19 but also the wider community. The vaccine stimulates your body's immune response to produce antibodies and other proteins that will fight the virus if you're exposed to it. This reduces the risk of getting infected, and if you do get COVID-19 it means you will have less severe symptoms and recover faster.

We have seen an uptake in cervical screening this month, with September being Cervical Screening awareness month - well done ladies for biting the bullet and getting this done - screening can really save lives, if you're not doing it for yourselves, do it for your loved ones. Cervical screening can be the 'best not nice thing to do'.

To those lambing and calving, I hope this is going accordingly regardless of the horrible weather spell we had, it is incredible how hardy the young stock can be!

ANNUAL GENERAL MEETING FOR TUATAPERE COMMUNITY MEDICAL SERVICES TRUST AND WAI AU HEALTH TRUST LTD

Annual General Meetings will be held on **Monday 18th October 2021 at 7:00pm** for Tuatapere Community Medical Services Trust followed by Waiau Health Trust, at the Day Activities Room, Maternity Hospital 69a Orawia Road, Tuatapere.

Kind Regards
Jo Sanford (Manager)
Work: 2266123
Cell: 027 295 0429



Waiau Health Trust
69a Orawia Road, Tuatapere
Approved Registered ACC Provider
Monday to Friday
9:00am – 4:30pm
Ph.: 2266123

Practitioner Hours
Amanda McCracken (NP) – every
weekday

Sheryl Eden (NP –every Monday &
Tuesday)

Murray Allen (GP)
Thursdays

Physiotherapist
Tuesdays & Thursdays
Phone for an appointment

Podiatrist
Visits regularly –
Phone for an appointment

Warts/Minor Skin Lesions
Liquid Nitrogen treatment available
Phone for an appointment

Homebased Maternity Care
We are offering this service
in the patient's home.
Please contact Jo Sanford
on 2266123 for enquiries.

Day Activities Programme for
the Elderly
Every Tuesday & Wednesday
Please phone for further information.

District Nursing
Available as required by referral

BARRETT *Ag* LTD

FULL SILAGE AND BALEAGE SERVICE



ALL CULTIVATION
INCLUDING DIRECT DRILL
AND STRIP TILLING - PRECISION PLANTING



EXCAVATION
20 TONNE DIGGER/ GRADER
D85 BULLDOZER/ ROLLER
TIP TRUCKS AND TRAILERS



Barrett Ag Ltd
Ph: Kahu- 027 5183 448
E: barrettagltd@gmail.com
FB: Barrett Ag



Three waters at Southland District Council

Conversations about proposed three waters reform have been flowing at national and local government level and Council has been wading through a lot of information to better understand what the future may hold for Southland since the reform programme was announced in 2020.

As part of this process, significant work has been undertaken alongside local government partners across Otago, Southland and the wider South Island.

In 2020 Council committed to phase one of the government's proposed reform; signing a memorandum of understanding with the Crown to engage in discussions with central government about the reforms. Council provided central government with a high level of information regarding its three waters delivery, relating to age and condition of assets, compliance and consenting information, resources, funding, levels of rates and other key data.

Council received \$13.53 million in stimulus funding, allowing it to undertake a significant programme of renewals and upgrades of water networks throughout the district.

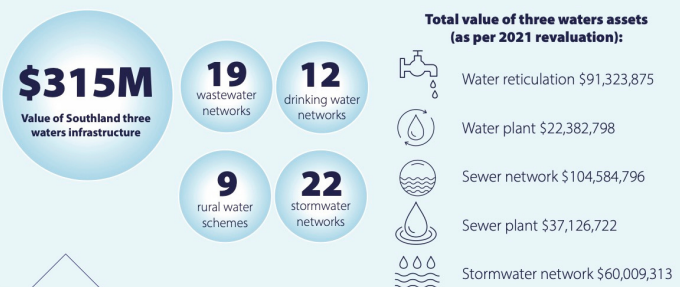
In 2021, the government announced plans to amalgamate all New Zealand councils' water services into four publicly-owned multi-regional entities. Under the proposals, Southland would be part of an entity covering most of the South Island, excluding Nelson and Marlborough. Council-owned three waters infrastructure would be merged into the new entity.

While no decisions have been made, councillors have discussed the three waters reform at length and are preparing initial feedback to seek

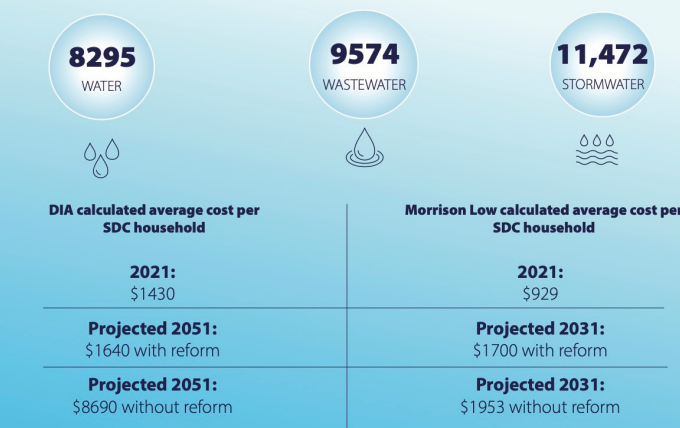
further clarification from the government.

We appreciate there are many facets to the proposed reforms and Council will continue to keep the public updated through our website, reporting and media releases where appropriate.

Key stats for Southland District



Total number of billed properties for each service



Whilst DIA has calculated a \$350m capital investment over the next 10 years, Morrison Low has calculated a capital investment requirement of over \$150m in three waters over the next 10 years. It is important to note that in the absence of clarity around the new regulatory environment, the 2021-2031 LTP has allowed for capital investment of approximately \$100m.

NOTE: The Department of Internal Affairs (DIA) is the lead central government agency coordinating the programme of three waters reforms.

NOTE: Morrison Low are consultants which have worked closely with the Otago Southland three waters collaboration advising on the three waters reform.

Additional information, key statistics and FAQs can be found on our website: www.southlanddc.govt.nz/mysouthland/three-waters-reform/

Council respects the importance of ensuring the views of our communities are heard and would value your feedback or questions on our engagement platform: www.makeitstick.nz

Further information is expected soon and, at this stage, councils will have until the end of the year to opt in or opt out of the proposed reforms.





George Harpur, SDC Councillor, Waiau Aparima Ward

Hi and welcome to my spring report for 2021. Days getting longer but still waiting for some dry warmer weather for those that love the garden to get out and amongst it.

This report kicks off the penultimate year of my term as your Councilor and I cannot help but reflect on the changes that have occurred in this and most other communities in rural New Zealand. Having lived in and around Tuatapere for some 60 odd years I have seen a bustling rural community go from some 800 people (plus those in the satellite villages) to some 500 today. Gone are many eight to five workers that made up the bulk of the local volunteers, gone are the tradies, the farm service agents etc. Centralization has seen us relying on outsourcing people and materials that were once available locally, all at an extra cost to the consumer. Many of the older folk who put their faith in past governments and councils built in the rural areas and now find themselves a prisoner in their own home as their asset base does not compare with an urban home near regular facilities. Assistance with insulation has helped some but now where does their coal for the range come from. I dare not even estimate how many rural folk fit into this field. It appears as if the more we get into the IT field the further we get behind as many over 65 are not too conversant with computers and modern technology. The bright light at the end of the tunnel is that most will be gone before their roof and windows fail and their spirits will be souring up yonder, hopefully looking down on our current flag.

As I have commented on, this is the last twelve months of the current tri-annual election period, as such it is time to seriously consider who you, as the people of the Tuatapere Te Wae Wae Ward wish to represent you for the next term, both as Community Board and as your Councilor. My name will not be on the list, and I feel that there may be new vacancies for the community board. Last term we were struggling to find the six required. This is not a healthy situation as I feel there does need to be an election to contest the suitability of the candidates. There has been much activity with the long-term plan, the current three waters and various other matters that have been openly discussed, commented on and publicly criticized. Time to put your ideas and thoughts into practice I feel.

That's it for now.



Phone: Anita Green 027 506 2418
Tuesday 9-5pm, Thursday 10-8pm, Friday 10-5pm - Appointments are encouraged.

CHAMBERS REPAIR SERVICE

45 Half Mile Road, Tuatapere

Ph: (03) 226 6654

- 24 hour Self Service Fuel
- Full Mechanical Workshop
- NZ Post Centre
- Agents for Wide Span Garage



Bring your lawnmower in for a service now & beat the rush

**MTA Gift Vouchers
Available**

PLATE
METER SERVICES
TROUGH CLEANING SERVICES

PASTURE METER READING THAT'S QUICKER
AND EASIER, WITH AT THE GATE REPORTS

- Specialist in quality pasture meter reading with advanced sensor technology
- Provide 200 measurements per second or 18,500 readings over a single 500m pass
- Provides a fully integrated electronic support system
- Provides a secure web-based storage of information with easy access
- Prompt generated feed wedges for rapid decision making and seasonal comparisons
- Generate reports at the gate, supplying valuable pasture cover data and comparable results every time
- Improve health & increase animal hydration
- Enhance production & improve water quality
- Reduce bacterial/algae contamination of trough water

**CLEAN TROUGH WATER MEANS
IMPROVED LIVESTOCK HEALTH**

Now 2 bikes
available
for pasture
metering



Brett George • P 027 351 3408  
E platemeterservices@gmail.com

Ratty Says ...

Waiau Memorial Library

Most of September was very quiet, no one came to the library to visit me. But that's Ok, it gave me plenty of time to plot, I mean plan for my next lot of adventures. I also read heaps of books, I might have even learned a thing or two. When everyone came back to the library they were all wearing masks.



I went to Knitting Club. I've been trying to visit them for ages but I've always been too busy. The kids learn how to knit squares that get made into blankets which are sent to refugee camps in Eastern Europe. You can't use the B word at Knitting Club. Anyone who

says that they're BORED has to do the dishes. No one has ever used the B word.

Did you know that there's a thing called knitting brain? Your brain gets all foggy and you can't concentrate. That's when the kids do other crafts. When I was there the kids did rock painting. One of the girls let me have a go at painting her rock. I painted with my tail. It's been working very well since I had my surgery. I think I did a good job. I might have to take up painting and become the world's first Rat Artist.



I didn't get much knitting done because I noticed something way better. Chocolate cake! Yummo. I was about to eat it all up when I was told something terrible. The cake had beetroot in it. Beetroot!!! Who puts vegetables in a cake,

especially a chocolate cake. Not Happy! Luckily I found something to help me recover from my shock. A big tin of Milo!

It turns out that you're supposed to add milk to a little bit of milo and drink it out of a cup. I did not know that. I thought you just ate it straight out of the tin with a spoon. I think my way is best!



Tui Base Camp



Open from 8:30am every day!

Come in and check out our specials

Get in to book your xmas function!

For all of your dine in and takeaway requirements including:

- In-house roasted Amore Coffee
- In-house made pies, sausage rolls, cheese rolls
- Range of breakfast options
- Packed lunches
- Catering

Phone: (03) 226 6250

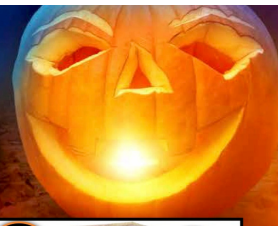
www.tuibasecamp.co.nz

Keep an eye on our Facebook Page for our latest updates!





SPOOKTACULAR OCTOBER DEALS



<p>\$16.99 EACH</p> <p>Jim Beam Gold; CC Premium 7% 330ml 6pk cans</p>	<p>\$19.99 EACH</p> <p>Woodstock (incl zero) 330ml 10pk cans</p>	<p>\$19.99 EACH</p> <p>Tui Bourbon; Vodka Soda 7% cans</p>	<p>Not Stocked</p> <p>Tui Hard Soda 330ml 10pk cans</p>	<p>\$21.99 EACH</p> <p>Jim Beam & Cola; CC (incl zero) 4.8% 10pk cans</p>	<p>\$22.99 EACH</p> <p>Cruiser 5% 12pk bottle range</p>	<p>\$24.99 EACH</p> <p>Gordons G&T; Gin & Soda (pink/sicilian) 12pk 250ml cans</p>
<p>\$24.99 EACH</p> <p>Major Major 10pk can range</p>	<p>Not Stocked</p> <p>Clean Collective 5% 250ml 12pk cans or Clean Collective 2 x 4pk 300ml bottles</p>	<p>Not Stocked</p> <p>Scapegrace 330ml 10pk cans</p>	<p>\$26.99 EACH</p> <p>JB; CC 4.8% 10pk bottle range</p>	<p>\$29.99 EACH</p> <p>Cody's 7% 18pk cans</p>	<p>\$32.99 EACH</p> <p>Woodstock 7% 250ml cans</p>	<p>\$34.99 EACH</p> <p>Jack Daniels & Cola 4.8% 330ml 12pk bottles</p>
<p>Not Stocked</p> <p>Hardy's VR 1L range</p>	<p>\$13.99 EACH</p> <p>Stoneleigh Marlborough (incl lighter) range</p>	<p>Not Stocked</p> <p>19 Crimes (ex call red) range</p>	<p>\$13.99 EACH</p> <p>Lindauer Classic & Enlighten ranges (ex reserve and free)</p>	<p>\$13.99 EACH</p> <p>Villa Maria Private Bin range (ex PN/Syrah)</p>	<p>Not Stocked</p> <p>Arrogant Frog Mudhouse (ex PN) ranges</p>	<p>\$25.00</p> <p>Canterbury Cream</p>
<p>\$37.99 EACH</p> <p>Teachers 1L</p>	<p>\$37.99 EACH</p> <p>Gordons Pink Sicilian Lemon 700ml</p>	<p>\$39.99 EACH</p> <p>Baileys 1L</p>	<p>\$42.99 EACH</p> <p>Absolut Ballantines Beefeater 1L</p>	<p>\$46.99 EACH</p> <p>JB 1.125ml JB Devils Cut JB Black 1L Makers Mark 700ml</p>	<p>\$52.99 EACH</p> <p>Malfy 700ml range Jameson 1L</p>	<p>Not Stocked</p> <p>JB Double Oak 1L Haku Vodka Roku Gin; Ratu Rum range 700ml</p>
<p>\$49.99</p> <p>Chivas Regal 12yr \$49.99 Chivas Regal 15yr \$76.99 Chivas Regal 18yr \$89.99 all 700ml</p>	<p>\$9.99 EACH</p> <p>Old Mout 1.25L cider range</p>	<p>Not Stocked</p> <p>Monteiths 6pk bottle range</p>	<p>Not Stocked</p> <p>Fortune Favours 6pk range</p>	<p>Not Stocked</p> <p>Kingfisher 12pk bottles</p>	<p>\$21.99 EACH</p> <p>Somersby 12pk bottle range</p>	<p>\$24.99 EACH</p> <p>Heineken (incl light & 0%) 12pk bottle ranges</p>
<p>Not Stocked</p> <p>Carlsberg 15pk bottles</p>	<p>\$26.99 EACH</p> <p>Tui; Export Gold; Extra DB Draught 15pk bottles</p>	<p>\$27.99 EACH</p> <p>Corona 12pk bottles</p>	<p>\$27.99 EACH</p> <p>Export 33 15pk bottles</p>	<p>Not Stocked</p> <p>Haagen 24pk bottles</p>	<p>\$36.99 EACH</p> <p>Lion Red; Waikato Speights or Summit 24pk bottles</p>	<p>\$37.99 EACH</p> <p>Speights Summit Ultra Low Carb 24pk bottles</p>
<p>\$41.99</p> <p>Asahi 24pk bottles</p>	<p>Not Stocked</p> <p>Steinlager Pure Stella Artois 24pk bottles</p>					

Promotion period between 1/10/2021 to 31/10/2021. While stocks last. Promotion only available at participating stores. Please contact your local store to confirm whether they are participating in the promotion and check the pricing in-store prior to purchase. Online pricing will vary.



100% **NEW ZEALAND** OWNED AND OPERATED
thirstyliquor.co.nz

FOLLOW US ON SOCIAL MEDIA



ASK ABOUT
LOYALTY CARD
BENEFITS &
GIFT VOUCHERS





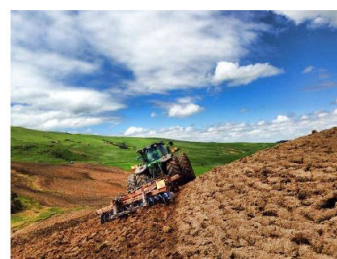
Rabco Ag Ltd – 021 362 766 – admin@rabco.nz
Agricultural Contracting Specialists - Western Southland



**Full silage
& baling
service**



Cultivation – including Direct Drill & Precision Drill



Effluent – Excavators - Hedgetrimming



TUATAPERE OUTDOORS & HARDWARE

For all your

Gardening tools, lawn care, garden hoses, insect and disease sprays, potting and compost.

We have those building requirements for that weekend job with a good selection of silicone, nails, screws and bolts.

New fishing rods and reels, fishing lures, good selection of soft bait, fishing nets, flounder and eel nets.



Good selection of giftware.

Come in, check out what we have.

Contact:

Judy **027 225 8192**

Paul **027 890 3602**

Shop **(03) 226 6363**

Painting & Handyman Services

Experienced Painter

I can help with all sorts of odd jobs too!

Gardening
Lawn mowing
Tree & Hedge Trimming
General labouring



Phone **Luke Wikstrom 027 2773 925**



027 252 7933

- ☒ Renovations
- ☒ Extensions
- ☒ New Builds
- ☒ Sheds/Farm buildings
- ☒ Decks
- ☒ Pre-purchase house Inspections

Call us for any building requirements

Ph 027 252 7933 email: aaroncbltd@gmail.com

LOCAL HISTORY - SPECIAL FEATURE

by George Charlton

To Orepuki by Boat

"Hugh Erskine built, first of all, a flax maimai and lived there until a two roomed slab hut was built and here, he and his family, lived for 12 years until it was replaced by a bigger house. There were no roads in those days and there was only one way out to Orepuki -by boat. By two boats, as a matter of fact, because they had to row across the two mouths of the Waiau River, and there was a boat at each. The horse would have to follow behind the boat and the ride would be resumed at Waihoaka. From there the road to Orepuki was a track through the bush. In that flax maimai, where Hugh Erskine first lived with his young family, the first girl to be born in the Waiau District was born. Today she is Mrs Jim Young, who is living in the Tuatapere town-ship. On Saturday next Mrs Young will re-enact, at the celebrations, the cutting of the ribbon across the bridge as it was done by her mother many years before. Most of the river crossings, in the early days, were made by punt; but cattle had to be swum across the river at the mouth one at a time following the boat. As time went on it was found that the punts could not do the work, especially when they also had to contend with the varying conditions of the river. People would have to wait on one side for the pleasure of the puntman- and, sometimes, the puntman was unaccountably deaf to a hail! Representations were made from time to time to the government for a bridge across the river. The answer was always that the cost of erecting a bridge in such a sparsely settled locality was not justified. Finally, Hugh Erskine offered to build the bridge in return for the land around it. And, at last, the authorities began to see that there might after all be some grounds for acceding to the request of the settlers and so, after years of frustration, the bridge was finally opened in 1915.

The Papatotara section today is an area of smiling green fields with fine homesteads and healthy sheep and here, as in other farming areas, the drudgery has been taken off farming by mechanisation. But when

22 William Erskine, Hugh Erskine's son, took up his block

of land when he was a youth of 19 (he is 75 today), he was confronted with a breaking in task that would have daunted a lesser man. "Even then", he says 'I didn't do much till I was married and then I had to settle down.' Settling down, consisted of felling the bush and draining the swamps to allow breathing and living room and to prepare the land for grazing. Everybody lived in the bush- there was even a view of the Longwoods which stand out so clearly today for all to see. In those years of development there have been many changes in the method of land clearing, starting from the axe and the saw and the block and tackle operated by horse to pull the stumps out and when the stumps were wrenched clear they had to be cleaned of their soil. Later, the timber jack was introduced and that was considered a great innovation and this was followed by gelignite, which again simplified the operation. The traction engine followed this but it was not until the coming of the bulldozer and the excavator that the district really began to forge ahead.

Actually, it was a demonstration about 1938, of big bulldozers and earthmoving machines that pushed great tree stumps out of the ground and laid them like cheese straws to one side for burning that showed the settlers of Papatotara just what could be done. It was not long after that a local bulldozing company began operations and was kept busy for years in land clearance work in the district. When William Erskine started draining he used black pine draining boards; black pine slabs of eight by one with the bottom board laid flat and the other two forming a peak which made a triangular drain for this timber. He paid 4/- (shillings) a hundred -today (1956) it is worth 2 pounds /18/6 (2 pounds, 18 shillings and 6 pence). William Erskine had a great team of horses which were always a feature of the Waiau Show and he brought Hugh Aitcheson out from Ireland to manage them. "Hughie was a great man with horses", says Mr Erskine. "He didn't like to see them sweat although it didn't matter how much we sweated."



9 Cumnock Street, Wallacetown

P: 03 235 8967 M: 027 242 8109

E: mcmahondesign@outlook.com

We offer a wide range of digital printing and graphic design solutions.

LOGO/EMBLEM DESIGN including full branding packages

ADVERTISING & SIGNAGE DESIGN

SOCIAL MEDIA GRAPHICS & EMAIL SIGNATURES

PHOTO EDITING & CUSTOM ART

CERTIFICATES - PRIZE CARDS - PROGRAMMES

WEDDING & EVENT STATIONERY

CALENDARS - BOOKLETS - REPORTS

NEWSLETTERS - MAGAZINES - CATALOGUES

ALL OFFICE STATIONERY

PERSONALISED STATIONERY & CARDS

PRESENTATION & PROMOTIONAL ITEMS

AND MUCH MORE...

**Get in touch with us today
for your free consultation and quote!**

OCTOBER *Special Offer* LABELS, LABELS, LABELS!

Get 20 x A4 Sheets of Pre-cut
Colour Adhesive Labels

Gloss or Matt finish available in many shapes and sizes:



DESIGNED & PRINTED
FOR ONLY
\$55
+GST & DELIVERY

These easy to use sheets are perfect for:

Address Labels	Sticker Seals	Health & Safety Labelling/Signage
Invoice Reminders	Thankyou Stickers	Retail Bag Stickers
Product Labels	Gift Tags	and much more....

Quote the code: **LABELS 20** or mention this advert when ordering to receive this special offer. Offer valid until Sunday 31st October 2021.

Design • Print • Copy

OPENING HOURS:

Monday, Tuesday, Thursday: 8.30am - 4.00pm

Wednesday: 10.00am - 4.30pm

Friday: 8.30am - 1.00pm

Saturday: By appointment



**Kia ora, Bula Bula, Nihao
Western Wanderer Readers**

Five years ago I joined Hauroko Valley Primary School's whanau and remember a Baby Legg on the list of enrolments for the future. Guess what?! We've just welcomed Dara to Kowhai class!

Ka rawe to our speech making finalists who presented at the Western Cluster Finals - congratulations on your achievements Year 5&6 - Lucy, George and Tomas and in Year 7&8 - Harry, Jack and Maddi. We are proud of each of you! Lucy moves on with her entertaining and thought provoking speech "The World's Biggest Problem" to Southland Speech Grand Final! Congratulations and Good Luck.

A few of our usual events have been postponed until Alert Level 1 (Tautaki o Te Titi Marae Year 4-8, HVP Disco), several have been cancelled (Southland Festival of Netball, Basketball Tournament, Ki O Rahi Tournament) and a few events have changed in format (Speeches, Hockey and Miharo Polyfest). This year our performance will be recorded for sharing as part of a virtual presentation for Miharo. Our intention is to film this before the end of Term 3 and then look forward to presenting to you in real life in the future.

However, we are choosing to look for the silver linings which is easy as our students are back at school! We are as pleased as they are to be back. Lots of reconnecting with friends and high engagement in learning. We've all been enjoying the frosty mornings bringing a warm and sunny day to follow. This enables our tamariki to get outside during play and lunchtimes making



learners team players gardeners performers

Shirley Whyte
Your local realstate specialist living & working in Western Southland
now also an Accredited Justice of the Peace.



for:
Friendly service, reliability, sound local knowledge
in Western Southland, Te Anau & Stewart Island
All enquires welcome - all calls answered



Harcourts  M 027 504 52200 O 03 214 4080
E shirley@harcourtsinv.co.nz
W www.harcourts.co.nz

Holmwood Real Estate Ltd Licensed Agent REAA 2008

**Looking for a babysitter or
someone to mow your lawns?**

Well, you're in luck!

**I'M A RELIABLE TEENAGER
LOOKING FOR SOME WORK**

Contact Jay on 027 242 2890

**Specialising in
Dairy Conversions
Rural Fencing
Post & Rail**



**H Gill Fencing,
Eastern Bush**
Phone 021 225 5489
After Hours 03 225 5488
Email hamish@hgillfencing.co.nz



accelerate
PHYSIOTHERAPY

office@acceleratephysio.co.nz
60 Deveron Street, Invercargill
(off street parking)
0800 291 475

Accelerate is a gentle form of exercise, effective in providing long term solutions
after an injury, especially low back pain.



We have interests in:

- > Spinal/Back & neck injuries
- > Sporting Injuries
- > Running, Cycling & Multisport
- > Men & Women's Pelvic Health
- > Acupuncture
- > Balance & Dizziness
- > Workplace Injuries / Ergonomic Onsite
- > Work Evaluations & Educations
- > Pilates

Joel Barnes
BPHTY, BExSci

Andrea Robertson
BPHTY, PG Cert ACUP

Andrea Murray
Dip PHYT Dip M.T.

Find us on  **facebook**

www.acceleratephysio.co.nz 

the most of the superb Southland weather. I'm sure this will be well received by not only newborn calves and lambs but also many of our farming families.

Lockdown Reflections

"Well, well, well, covid struck again! That meant sleeping in! My brothers went mental, until I remembered no internet! My Dad was like ... 3 more workers on the farm. The weather was much better than last lockdown. Lockdown was a cruise for me!"

"Lockdown was good for our family because we were calving and we could help out, if we needed to. I knew how to check the cows to see if they calving and then during lockdown I learnt how to calve a cow."

"Classic old lockdown! Lockdown was good timing because we started lambing. This lambing I lambed triplets! I got my first pet lamb on the second day of lambing, sadly the next day it passed away! My second pet lamb was kind of cute, but a cuter lamb came in, so I switched. "Mum, my call!" Finally the Prime Minister announced that we are heading to Alert Level 2 - it was a relief!"

"In lockdown I spent most of the time on the farm. I had one hour of school and then was out the door and in the muddy ditch - putting overflow into the ditch!"

Our outdoor environment is looking to be enhanced with some exciting options thanks to the combined ingenious of students. Keep your eyes peeled for some additional resources with activities for play and lunchtimes. Enjoy the move into Daylight Savings and holidays. We look forward to catching up with you all soon come Term 4!

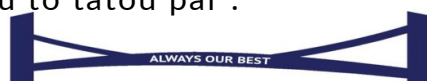


"Always Our Best/Tonu to tatou pai".

Nga mihi nui,

Julia Waikato, Tumuaki/Principal

Save the date! Term 4, Week 1 Hauroko Valley Primary School Pet Day - Friday 22nd October



achieverskaitiakihostscommunicatorsachieverskaitiakihostscommunicators



Registered ELECTRICIAN

For all electrical work
No job to small
A/Hours service available

Jay Brownlee
8 Carlyle Street, Tuatapere 9620
A/H 03 226 6673
Mob 027 4965 863
sparkieintuatapere@gmail.com

For all your Accounting and Tax Solutions

Ask for Janice or Trevor England

 **03 2266110**

Aparima Accounting Ltd
57 Main Road Tuatapere



For all your vehicle requirements

Cars, utes, 4WDs, vans

Finance available

Contact: Murray Dowling
027 556 2655

Visit our website
www.canterburycars4x4.co.nz



Agricultural Contractors servicing Western Southland and beyond.

BALAGE - SILAGE - GROUNDWORK - FEED TRADING
Nigel 021 226 6156 / fowlecontracting@gmail.com

New General Manager Appointed for Superior

Lawrence Alloo, Managing Director



After nearly 8 years of outstanding work for Superior, we are sad to announce that Gerald Davies, our General Manager, has left Superior to take up an exciting new role at Silver Fern Farms.

Gerald's positive attitude, drive and can-do attitude has been instrumental in helping us build and shape Superior into the innovative, customer centric company we all now enjoy. Although we're very sad to see Gerald leave, we're also very excited for him, as we know he'll be the right man for the job. We all wish him the very best for the future.

On a very positive note for Superior, we're very pleased to announce that we have secured Bradley Edwards to take over the reins from Gerald. Bradley brings a wealth of customer service experience to Superior having been the South Island Sales Manager for DKSH. DKSH are Swiss owned and a leading provider of Market Expansion Services. We're all very excited about Bradley joining the team and continuing to drive Superior forward.

Gerald finished on the 17th September with Bradley starting on the 23rd September, 2021.

Bradley's contact is:

bradley@superior.net.nz Ph: 021 710 558

PLEASE HAVE YOUR ARTICLES, NOTICES, OR
UPDATED ADVERTS FOR THE
WESTERN WANDERER

SENT IN **20th of October**
BY **(for November's Issue)**

SEND TO:
yourwesternwanderer@gmail.com

OR DROP A NOTE IN THE MAILBOX AT
18 Orawia Road, Tuatapere

PROPERTIES WANTED!

Contemplating selling? You might be surprised by what your property could fetch on today's market

Contact Julie today for a free appraisal and to discuss how you could take advantage of this buoyant property market



Julie Guise

021 256 4164

julieguise@sre.co.nz

SOUTHLAND REAL ESTATE LTD
Licensed under The Real Estate Agents Act 2008 MREINZ

**SOUTHLAND
REAL ESTATE LTD**
Licensed under The Real Estate Agents Act 2008 MREINZ

For all your fencing requirements

WESTERN FENCING
SHEEP | DAIRY | DEER



Call BEVAN 0277 413 213

GREAT FREIGHT RATES

Same Day
Door to Door
Monday - Friday

General Light
Freight Service
No Rural Surcharge



- Fresh & Chilled Freight
- Meat & Vegetables
- Flowers & Chocolate
- Bottled Milk
- Prescriptions
- Vet Supplies
- Ag. & Vehicle Parts
- Hardware
- Oil & Lube
- Ammo & Chemicals

Invercargill - Winton - Drummond - Otautau
- Tuatapere - Ohai/Nightcaps - Riverton

027 340 5845

bulletcourier8@gmail.com bulletcourier.org

Royal Bush

TRANSPORT LTD

CONTACT US TODAY

Phone 03 221 7192

Fax 03 221 7194

- Excavators for general farmwork
- Laser guided drainage
- Gorse mulching & land clearing
- Lane maintenance
- Conversions
- Effluent Ponds
- Demolition
- 20 tonne bulldozer, roller, grader
- Drain ploughing & alkathene laying



WESTERN ELECTRICAL

2008 LTD

Electrical Solutions

Domestic | Industrial | Commercial

Quality Service at Competitive Prices

- New Builds, Rewiring & Alterations
- Dairy Shed, Farm & Industrial Maintenance
- Hotwater Element Replacement
- A/H Call Out Service Provided



Ph 03 225 8974 / 027 439 3787

Fax 03 225 8973

MOUNTAINS EDGE CABINS MONOWAI



Hunting, Fishing, Mountain Biking,
Kayaking & Tramping
Cabin Accommodation

12 Cabins
Double and Single Available
\$35.00 per person per night

Eftpos available

Full Kitchen Facilities, Showers, Toilets, Playground
& the Tennis Courts right across the road!

www.mountainedgescabins.com
Email: mountainedgescabins@gmail.com

We are 'pet friendly'

75 Turbine Drive, Monowai. Ph. 03 225 8267

WaterForce

Irrigation Systems
Pumping & Filtration
Effluent Dispersal
Water Management

20 Winton Hedgehope Highway, Winton

03 236 9805 www.waterforce.co.nz

0800 4 FORCE (4 36723)

The purpose of this new feature is to highlight student writers in our community and to give them an authentic audience.

continued from September's Issue ...

FIFTY SHADES OF WHITE PRIVILEGE

WRITTEN BY: MALAKAI MANGION

White privilege exists whether people want to acknowledge it or not, for many white privilege is an invisible force that needs to be recognized. Western society has been built off privileging white people over non-white people, and though it has improved vastly compared to sixty years ago it is still a major issue. It is an issue about which there have been numerous protests and marches, but there are still people that continue to refuse to believe the truth. In a book by author Charles Mills called *The Racial Contract*, he summarises this by saying, "The ironic outcome is that whites will, in general, be unable to understand the world they themselves have made."

'The ironic outcome is that whites will, in general, be unable to understand the world they themselves have made.'

~Charles Mills (*The Racial Contract*)

White privilege is often associated with the meaning that white people have never suffered or struggled because it has the word privilege in it and people who have grown up in harsh living environments don't see themselves as privileged. But white privilege is NOT the suggestion that white people have never struggled or the assumption that everything a white person has accomplished is unearned as many white people have worked hard to get to the positions they are in now. Instead, white privilege should be viewed as an advantage white people have, as many have greater access to power and resources than people of colour in the same types of situations do.

The majority of people are familiar with the feminist phrase 'the glass ceiling' which is used to represent invisible barriers that stop women from rising beyond a certain level of hierarchy. It is a metaphor that equally applies to white privilege in the sense that black people also have barriers to success a white person generally wouldn't struggle with.

For many white people, their privileges and advantages in society are not something that they think about, they aren't conscious of them. This does NOT make them racist. Journalist Sam Baker says she sits with an uncomfortable and overwhelming feeling when she hears about the advantages she has in western society just because she was born into the race that has the most influence. Once white people find out about these privileges, many feel the same way.

White privilege is taught as a part of history, and though it is ingrained in the past it is still very much in the present and is an invisible force that needs to be recognised if we are to make a more equitable future for all. White privilege is about whites being able to move through society at ease while people of colour cannot. It is about white people not having to worry if the colour of their skin could have impacted whether 'they didn't get that job'. White privilege is a misunderstood topic but nonetheless, an understanding of white privilege is essential. 'Race doesn't really exist for white people because it has never been a barrier. Black people don't have that choice.' - Chimamanda Ngozi.

'Race doesn't really exist for white people because it has never been a barrier. Black people don't have that choice.'

~ Chimamanda Ngozi Adichie (*Americanah*)

This is an opinion piece of student writing that gained the student an Excellence in Level 3 NCEA. It was moderated by two other schools. One of the objectives of this writing assignment was evoke a response in the reader.

**For Landscaping,
Land Maintenance,
Gravel Supply & Cartage**

**GRADES OF CRUSED & SCREENED GRAVELS,
ALKATHENE LAYING, ROOTRAKING,
FARM TRACKS, DAIRY LANES**



**ELEVATOR SCRAPER,
BOBCAT & ATTACHMENTS,
LANDSCAPING, TRENCHING AUGERS**

Supplies of Gravel Ex Waiau River

River Run Screened Grades Concrete Gravel Pea Gravel
Rejects for soak holes Crushed - AP30 & AP65
Peebles for Sheep and Cattle yards and calf sheds
Fines suitable for cow lane capping

**K J SUTHERLAND
GRAVELLING &
AGRICULTURAL CONTRACTOR
2475 OHAI-CLIFTON H/WAY
ORAWIA RD2 OTAUTAU 9682**

Ph 0274 367 934

**K.J. Sutherland
Contracting
Bobcat T190**

**With attachments: Landscape Rake,
Augers and Trencher**

**Suitable for all landscaping, shed and yard
maintenance**

Muck-spreader and tip trailer available



**PHONE KEVIN
027 367 934 / (03) 225 5716**

MILLARS

- PLUMBING
- GAS FITTING
- DRAINLAYING
- LICENSED BUILDER

Master Plumbers
f Ph 027 4340 705 or 03 225 8567



We specialise in:

**Resource consents
Farm environmental plans
Policy advice
DOC concessions
Landscape plans & assessment**

We take care of the paperwork,
so you can do what you do best!

Sonya: 027 5050 077
Rebecca: 027 4246 129
www.slwp.co.nz
Locally owned & operated



Tim and Superior go the extra mile

Are you frustrated with the lack of service from your local fertiliser consultant, peddling the same advice year after year regardless of your production outcomes, environment and sustainability?

Give **Tim Adcock** of Superior Fertiliser Specialists a call. He will bring a whole new meaning to service and client/advisor relationships.

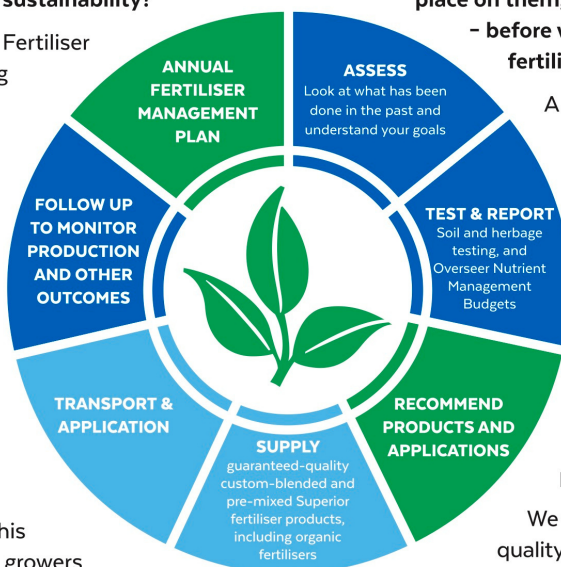
Tim is a key member of the highly skilled Superior team totally committed to helping you develop healthier, more productive soils and plants.

We form a specialist fertiliser company that provides high quality advice and products at competitive prices. We have been doing this for South Island farmers and growers for just on 20 years.

Superior promotes a total soil care package. First, we get to understand the make-up, nutrient status and health of your soils, the demands you are going to place on them, and your production goals – before we apply one kilogram of fertiliser.

A comprehensive regime of vigorous soil tests will be undertaken and the results will provide the basis of a Superior Fertiliser Management Plan customised for your unique situation. This will complement your farm's Environmental Plan and provide the blueprint for an ongoing annual fertiliser programme.

We then supply guaranteed-quality solid fertiliser for your pasture and crops, monitor production and other outcomes, and update your Plans as required.



It's free to talk so don't hesitate to give Tim a call.
Phone 021 418 224



Tim Adcock
Fertiliser Advisor
Otago/Southland
021 418 224
tim@superior.net.nz

 FERTILISER SPECIALISTS
SUPERIOR
www.superior.net.nz

TUATAPERE SERVICE STATION

20 ORAWIA ROAD

PHONE: 03 2266475

WHITEBAITERS

We still have plenty of nets in stock along with
netting, waders, screens pulleys etc

FOR ALL YOUR MECHANICAL NEEDS

Car & 4WD WOFs

Trailer, Caravan & Motor bike WOFs

Servicing all vehicles

Light Engineering

New Tyres

Electrical Work

Scanning of most vehicles



HARDWARE WE STOCK

METRIC BOLTS & NUTS

IMPERIAL NUTS & BOLTS

GUTTER BOLTS

DYNA BOLTS

COACH BOLTS

TEK SCREWS

WOOD SCREWS

SELF TAPPING SCREWS

HINGES, BRACKETS, CATCHES



NZ TRANSPORT AGENCY
WAKA KOTAHI

WE CAN PROCESS ALL YOUR

REGISTRATIONS

ROAD USER CHARGES

CHANGE OF OWNERSHIPS

VEHICLE EXEMPTIONS

CANCELATION OF REGISTRATION

CHANGE OF HUBOMETERS

