



# WESTERN Wanderer

Tuatapere | Clifden | Orawia | Blackmount | Monowai | Colac Bay | Orepuki

Issue 237

At a glance ... what events are on this month? **SEPTEMBER 2021**

MONDAY	TUESDAY	WEDNESDAY	THURSDAY	FRIDAY	SATURDAY	SUNDAY
		1 We're at Alert Level 3	2	3	4	5
6	7	8 We're at Alert Level 2!	9 Schools are open!	10	11 Second Hand PopUp Shop TPC Main Rd 10-2pm	12
13	14	15 Tuatapere & Districts Promotions Inc Committee Meeting 7pm WTCC	16	17	18 Second Hand PopUp Shop TPC Main Rd 10-2pm <b>Market Day 10-2pm</b> <b>TPC Main Rd</b>	19
20 <b>Notices, events, adverts etc in to the WW for the October Issue</b>	21	22	23 Last Soup & Chat for the year! Tui Base Camp 11am	24	25 Second Hand PopUp Shop TPC Main Rd 10-2pm	26
27	28	29	30	1 Syd Slee Charitable Trust Funding Applications Open	2 Second Hand PopUp Shop TPC Main Rd 10-2pm	3 Tuatapere Domain Board AGM Domain Rooms 10am
4	5	6	7 Tuatapere Amenities Trust AGM WTCC 2:30pm	8	9 Second Hand PopUp Shop TPC Main Rd 10-2pm	10

Special thanks to



**SEE INSIDE FOR MORE DETAILS!**  
Want your event here? Let us know at  
**yourwesternwanderer@gmail.com**

## COMMUNITY NOTICES & EVENTS

### HANDY PHONE NUMBERS

#### EMERGENCY

POLICE / FIRE / AMBULANCE: **111**

MEDICAL CENTRE: (03) 2266 123

TUATAPERE POLICE STATION:  
(03) 2269 020

TUATAPERE COMMUNITY WORKER:  
027 757 5983

HAUROKO VALLEY SCHOOL OFFICE:  
(03) 2266 753

WAI AU AREA SCHOOL OFFICE:  
(03) 2266 285

TUATAPERE CEMETERY TRUST:  
(03) 2266 065

CHAMBERS SERVICE STATION:  
(03) 2266 654

TUATAPERE SERVICE STATION:  
(03) 2266 475

TUATAPERE FOUR SQUARE:  
(03) 2266 898

TUATAPERE OUTDOORS & HARDWARE:  
(03) 2266 363

## Online Scams - Some Helpful Tips!

**ALERT**

Police want people to remember some fundamental tips to help prevent being scammed when purchasing goods online.

Look after your personal details in the same way you would your wallet and other possessions.

Check the profile of someone who is contacting you unexpectedly, as it may be a fake.

If something looks or sounds too good to be true, it probably is.

If you think you may have been a victim of a scam, notify your bank immediately, and **call Police on 105** to report it.

We are also aware that scammers may target elderly or vulnerable people, so we urge people to have conversations with older or vulnerable family members about keeping safe online and being aware of suspicious activity and tactics used by scammers.

In general, Police advise people to buy and sell off regulated websites such as Trade Me. Police also urge people not to hand over the goods they are selling until the payment has been cleared and the money is in their bank account. Verify the funds are cleared if you can with your bank. If you are buying items, avoid doing so on social media and purchase them from legitimate stores or companies.

If you decide to purchase off social media, we encourage you to take basic precautions to protect yourself. This includes:

- Insist on meeting to conduct transactions and examine the item before completing the transaction. Meet in a public place and take a friend. **DO NOT** go into someone's house or allow them into yours, **DO NOT** deposit money into another person's account.
- Learning more about the person you are buying from or selling to. Note: You can tap on a person's profile on the product listing page to see if you have any friends in common, their marketplace activity, and any ratings they may have received.
- Protect yourself from online scams. Check out [www.netsafe.org.nz/advice/scams/](http://www.netsafe.org.nz/advice/scams/)
- Ensure friends and family, especially anyone vulnerable, understand what to do to protect themselves. Be the person to provide that ongoing support and advice.
- Trust your instincts – if it's too good to be true or sounds like a scam, it probably is.

More info here:

<https://www.police.govt.nz/advice/email-and-internet-safety/internet-scams-spam-and-fraud>



### TUATAPERE PLAYGROUP

TERM 3, 2021 LEARNING PLAN

THEME: 'OUT THERE DOING IT' — THE NATURAL WORLD

TE WHARIKI PRINCIPLE FOCUS: FAMILY & COMMUNITY

TE WHARIKI STRANDS FOCUS: CONTRIBUTION & EXPLORATION

Date	Theme	Activities
30 <sup>th</sup> July	Red, Black & White Fancy Dress Day -Fundraising for the Southland Charity Hospital 	-Wear something red, black and white to playgroup. If you can bring along a donation to go towards the Blair Vining Southland Charity Hospital. We will be doing some red, black and white themed activities!
6 <sup>th</sup> August	Responding In an Emergency - St John's Educator to visit	-Alan Reilly the educator from St John's will be visiting and teaching the children about how to respond in an emergency situation.
13 <sup>th</sup> August	REAP Visit 	-Maree Day from Southern REAP will be visiting us with all her awesome activities.
20 <sup>th</sup> August	Goodbye Winter 	-Make fake snow -Make penguin & snowmen themed marshmallows to eat
27 <sup>th</sup> August	Super Spring Science	-Make a cloud in a jar -Make Grass head Men
3 <sup>rd</sup> September	Our Fabulous Fathers -Fathers Day	Make gifts to give to our Fathers or other special people in our lives on Fathers Day.
10 <sup>th</sup> September	Cupcake Cuteness -Welcome Spring 	-Make Lamb cupcakes to celebrate the start of Spring.
17 <sup>th</sup> September	Cool Conservationists -Conservation Week	-Make some bird feeders and take them home to put in our gardens to feed the native birds.
24 <sup>th</sup> September	Delightful Dairying -Calf Visit	-Visit to Jenkins Road Dairies to see the calves & cows.
1 <sup>st</sup> October	Rabbitte Ranch Visit - End of Term Trip 	-A visit to Rabbitte Ranch in Invercargill to see all the baby animals and ride the pony and donkey. Following this we will go to Chipmunks for a play and lunch!



# History of the Waiau Valley Request

Lloyd Esler, Author

I am doing a small book on the history of the Waiau Valley from the Mararoa Weir down to the ocean and including Te Waewae Bay from Orepuki to Port Craig.

Publication will be about November 2022.

The more I delve into it the more interesting it gets – a lot of it a bit depressing with the loss of the industries that briefly flourished – Port Craig, cement works, Orepuki shale, platinum, goldfields, mills and railways.

I'm keen to get as much information as I can and looking for stories and pictures.

A few things I want to find:

- Any proof that Dorothy Sherriff wrote 'On top of the World';
- Pictures of people gathering toheroas on Bluecliffs Beach;
- The wreck of the dredge in the lagoon;
- Cave drawings at Clifden;
- Making the Hauoko road;
- Goldmining on the beach;
- The railway terminus at Te Houka;
- Traction engines at work;
- Building the pylons;
- The river in flood;
- A Waiau flaxmill and dairy factory;
- The 'Limestone Gorge' at Clifden in its pristine state; and
- The rail bridge at Orawia.

It's a bit of a tall order but old photo albums and postcards and written accounts of life in the old days most welcome.

Thank you very much.

My contact details are

Email: [esler@southnet.co.nz](mailto:esler@southnet.co.nz)

Phone: (03) 213 0404

## WE'RE LOOKING FOR LOCAL CONTRIBUTORS!

Are you interested in being a regular or semi-regular contributor of content for the Western Wanderer? We're looking for people who would like to provide a short article/piece of reading for each monthly issue. (It doesn't have to be every month - we can be flexible!) Email us at [yourwesternwanderer@gmail.com](mailto:yourwesternwanderer@gmail.com) or drop a note in the mailbox at 18 Orawia Rd, Tuatapere.

## COMMUNITY NOTICES & EVENTS

**SAVE THE DATE!**



**Sunday 14 November 2021**

**10:30am start**

**5-16 year old age groups, open and pre-school  
Individual or Team entries**

**Prize to the school with the most entries!**

**at the Tuatapere Community Pool  
Orawia Rd, TUATAPERE**



For more information check out our facebook page OUT WEST TUI TRYathlon, email [OutWestTuiTryathlon@gmail.com](mailto:OutWestTuiTryathlon@gmail.com) or call in to the Tuatapere4Square to pick up an entry form and information.

Tuatapere Community Pool Fundraiser



**Ask questions, hear an update and head into planting season with more confidence.**

Join us for a short 30min presentation followed by Q+A's on and about what you need to know about winter grazing and sowing crops for winter 2022.

**Supported by regional council and local stakeholders.**

We will have rural professionals, cakes and coffee available from 12 - 5pm if you would like to call in, pick up resources and have a chat.

If you can't make it in person, there will also be an online version available.

Find out more about ACE online [www.thrivingsouthland.co.nz/ace](http://www.thrivingsouthland.co.nz/ace)

**Thursday 23rd September  
Otautau Farm Source**  
Presentations will be at:  
12.30pm | 2.30pm

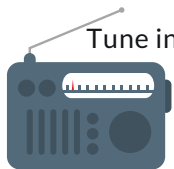
**Thursday 14th October  
Otautau Farmlands**  
Presentations will be at:  
12.30pm | 2.30pm

Please register your interest to  
Rachael 021 566 229



**Get your car washed, dried and windows cleaned - Price arranged on request!**

Contact: Rex Hibbs  
Flat 1/26 Orawia Rd, Tuatapere



Tune into Tuatapere's very own Radio Station

**88.2 FM - Tui FM!**

Hits of the 80's & 90's and today's current music!

## COMMUNITY NOTICEBOARD

### SYD SLEE CHARITABLE TRUST

Applications for the 2021 funding round will open on 1st October and close on 31st October, 2021.

An updated guide sheet and application form can be requested by emailing [ssctrust17@gmail.com](mailto:ssctrust17@gmail.com) or by phoning Nicky Baker on (03) 225 5094

### TUATAPERE DOMAIN BOARD AGM

To be held in the Domain rooms on **Sunday 3rd October 2021 at 10.00am.**

If you have an interest in the future of the domain please attend.

Apologies to David Norman or Shirley Crack

### TUATAPERE AMENITIES TRUST AGM

To be held at Waiau Town & Country Club, **Thursday 7th October 2021 at 10.30am.**

All welcome!

### TUATAPERE HIGHLAND PIPING & DANCING SOCIETY

Tuatapere Highland Piping & Dancing Society celebrates it's 65th competitions on **Saturday 6th November.**

Dinner and Dance to follow.

More information to come later.

### DISABILITY MOBILE SERVICE

The Disability Mobile Service is coming to the Waiau Town and Country Club on

**24th September at 1.30pm**

They have Mobility, Bathroom, Kitchen, Home Living, Continence products, Clothing and Dressing. Hope to see you there.

If you want a price list or information please ring  
4 Alison Bennett 027 224 2724

### SALVATION ARMY FAMILY STORE TRUCK

The Salvation Army Family Store Truck will come out and collect large amounts of your pre-loved furniture & other household items. This service is free.

Please call the store to organise your visit on **03 214 5380**



**Family Store**

Donate. Buy. Help.



[familystore.org.nz](http://familystore.org.nz)

### TUATAPERE HEALTH & GIFT SHOP - Riverton Pharmacy

We now have two courier drops for prescriptions for our Tuatapere customers:

**1:00pm and 4:45pm.**

The Health & Gift Shop is open from 12:30pm - 5:30pm.

If we can help in any other way, please contact Riverton Pharmacy **(03) 234 8515**



### COUNTRY CORNER CRAFTS

Come in and browse and see what we have to offer. Hats, scarves, children's knitwear, cards, jewellery, woodware, sewing, jams, pickles, sauces, etc.

Tuatapere souvenirs "On Natures Edge" logo are always available.

Is anyone interested in joining to sell their crafts? You are more than welcome to contact us.

Want to volunteer your time & work in the Craft Centre - let us know! It's a great way to meet people! If you wish to view the shop and it is closed, please ring the ladies below to open it for you.

**Louise Greber (03) 668 6001 or  
Lyla Sherriff (03) 226 6187**

## COMMUNITY NOTICEBOARD

### TUATAPERE COMMUNITY STRENGTH & BALANCE CLASS



Would you like to support this class by helping facilitate more regular classes?

Full training and support provided.

Contact **Courtney** on **021 799 528**

### TUATAPERE PRESBYTERIAN CHURCH POP UP SECOND-HAND SHOP

The Pop Up Second Hand Shop is held from 10am to 2pm **every Saturday** of the month in the Tuatapere Presbyterian Church Hall, Main Road, Tuatapere. All welcome.

**POP UP SECOND HAND SHOP  
EVERY SATURDAY**

**10am to 2pm**

**QUALITY GOODS - AFFORDABLE PRICES  
STARTING 11th SEPTEMBER**

Come and see the large selection of items for sale. Fundraising for the church. Donations of clean, good quality goods gratefully accepted.

**Want to sell some of your own goods?**

Book a table or talk to me for other options.

To donate goods, book a table or any queries please phone or text **Carol Diack 021 110 1835**

### TUATAPERE PRESBYTERIAN CHURCH MARKET DAY

The church market is held from **10am to 2pm every 3rd Saturday of the month** in the Tuatapere Presbyterian Church Hall, Main Road, Tuatapere. All welcome.

**MARKET DAY  
SATURDAY 18TH SEPTEMBER  
10AM - 2PM**

**COME AND SEE WHAT'S NEW!**

Come and see the various crafts and local produce. Enjoy a cup of tea or coffee and something to eat.

To book a table or any queries please phone or text **Carol Diack 021 110 1835**

## NEED A JP?



The following Justices are available by appointment:

#### Tuatapere

Keri Potter 027 526 3137

Donald Egerton 027 432 5407

#### Te Waewae Bay

Shirley Whyte 027 504 5220

#### Blackmount

Nicky Baker 0276435880

### WESTERN SOUTHLAND WOOLCRAFT GROUP

Spinning, Felt, Weaving, Knitting, Crochet. Other crafts welcome!

1st Wednesday of the month.

10am - 3pm. BYO Lunch.

For details please contact:

**Helen Todd 022 378 9743**



### TUATAPERE & DISTRICTS LIONS CLUB PROJECT



#### SUPER DIRT

Super dirt bags are now weighed so more in each bag!  
**\$8 per bag - ready for your garden!**

Super dirt can be collected from: Cracks Yard, Grove Burn Road, in the mornings Monday to Friday. Weekends by arrangement.

Delivery by arrangement - (but not guaranteed)

Phone Trevor (03) 225 5864 or Stephen (03) 226 6817



### TUATAPERE COMMUNITY WORKER

Room 5 Medical Centre  
69A Orawia Road

Monday - Thursday 10am to 3pm

Keri Potter **027 757 5983**

Email: [tcworker@xtra.co.nz](mailto:tcworker@xtra.co.nz)





## WAI AU MEMORIAL LIBRARY

**Library Hours: Fridays**

10:00am - 11:30am

2:30pm - 4:00pm

7:00pm - 8:00pm

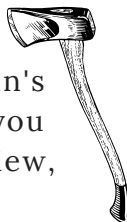


The Wi-Fi is available free to all library members. Just ask one of our friendly volunteers to help you set up your device.

## TUATAPERE BUSHMAN'S MUSEUM

Orawia Road. If the Bushman's Museum is not open when you have visitors who wish to view, you can contact:

Lindsay Faulkner (03) 226 6650 to arrange a suitable time.



## TUATAPERE ENVELOPES

Envelopes printed with the "Tuatapere on Natures Edge" Logo can be purchased at Country Corner Craft Shop 1A Orawia Road **Cost \$3.00 per 10**



ESSENTIAL OILS 100% PURE GIFTS OF NATURE  
Florals Trees Plants Herbs Spices Citrus

To Learn More, phone or text your local Wellness Advocate  
Carol Erskine Papatotara 0274 599 654



## TUATAPERE MAINLY MUSIC

A pre-school music and movement-based playgroup.

Mondays during the school term at the Tuatapere Presbyterian Church Hall.

Music session starts at 10am followed by a time of morning tea and play. \$2 per family.

Morning tea is provided for all.

New families welcome!

Find us on Facebook:

"Tuatapere Mainly Music"



For more information contact  
Heidi 022 315 3326

## COMMUNITY NOTICEBOARD

### MONOWAI/BLACKMOUNT VILLAGE GARAGE SALE

Monowai Village and the Blackmount Community is planning to have a village garage sale on **Saturday 13 November** at Monowai Village, Turbine Drive.

Would you like to join us with a car boot sale?

The car boot sale will be \$10 per car and proceeds from this will be donated to Furever Homes Pet Rescue.

If interested please contact

**Merrill Laurence on (03) 225 8267**

### SOUP & CHAT (FREE)

Thursday 23 September at Tui Base Camp.

11am to 12:30pm - it's our last one for the year!

See you there! Book (for catering purposes) by calling Keri Potter 027 757 5983



### WAI AU VALLEY PRESBYTERIAN CHURCH

Services for all ages! Every Sunday at 10.30am.

Tuatapere Presbyterian Church, Main Street, Tuatapere.

All welcome to join us. For information please contact:

**Chris Howden, Session Clerk, 021 477 999**

### TUATAPERE PLAYGROUP

23B Orawia Road. **Friday Playgroup 9am - 12pm**

All parents and children welcome!

Children's morning tea is a packed lunchbox from home at Playgroup (as opposed to a shared morning tea).

Any queries please contact:

**Gemma Bennett 022 040 3368 Alice Harris 027 270 0363**

### CLIFDEN PLAYGROUP

45 Otahu Eastern Bush Road.

**Every Wednesday (during School Term) 9:30am - 12:30pm.**

All mothers and children welcome.

Bring packed lunchbox for your child's morning tea.

Any queries to: Sarah 027 699 5234

## COMMUNITY NOTICEBOARD

### TUATAPERE TOY LIBRARY

Tuatapere Toy Library has been a toy swap/hire service provided to the young families of Tuatapere and surrounding since 1989. The purpose is to create opportunities for the little people of our community to have accessibility to toys. A small contribution of an annual membership allows families to join the group and have access to the toys.

For more information or questions please text or ring Nathalie Pahl on **027 4759 075**



### SENIOR CITIZENS

Senior Citizens is a group of over 60s that meet every **Friday afternoon at 1pm** at the rooms behind the RSA Hall.

We are always looking for new members so if you would like a fun afternoon playing bowls, cards or just catching up with friends, come and join the group.

Contact: Olive Bennett Ph **(03) 2266 477**

### SOUTHLAND COMMUNITY LAW CENTRE

**Free legal information and advice for the community of Southland.**

2nd Floor, Cue Building, 33 Don Street, Invercargill. Phone **(03) 214 3180**

Freephone: 0800 550 800 (outside Invercargill city only)



**MISSIONS**  
"BRIDGE CHRISTIAN MINISTRIES UGANDA"

We believe in Community and endeavour to show this the best we can by the way we care and serve!

**Sunday Service**  
10am  
Truro St, Orepuki

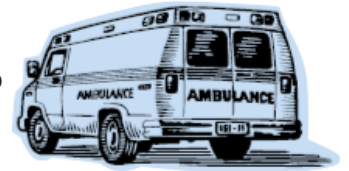
### TUATAPERE AMBULANCE

#### Did YOU Know?

The Tuatapere Ambulance is a funded service by the Tuatapere Lions Club, for the residents of Tuatapere & Districts.

Should you receive an account for this service from St John, please forward it immediately to:

**The Treasurer  
Tuatapere Lions Club  
PO Box 47  
Tuatapere**



Sometimes we experience difficulty in receiving the invoices for YOUR trip - so PLEASE do forward them on to us.

Thank you!

**Tuatapere Lions Club Charitable Trust  
Ambulance Committee**

### WESTERN SOUTHLAND HEALTH SHUTTLE

The Western Southland Health Shuttle Service travels from Otautau, Ohai, Nightcaps, Tuatapere, Riverton - covering all of Western Southland. We also connect with the Invercargill-Dunedin shuttle.

The Western Southland Health Shuttle operates Monday - Friday (excluding Public Holidays).

Bookings are required by 3pm the day prior to transport.

**Ph: 0800 103 046 to book.**

Please book as soon as you receive your appointment.

### TUATAPERE VOLUNTEER FIRE BRIGADE

We're on the lookout for members to join this rewarding organization. We are looking for persons who are, ideally, available throughout the day.

If you think that you would like to try this (sometimes lifelong) commitment, then please feel free to come and try it!

We train on Tuesday nights at 7:30pm during daylight saving and 7pm through the winter months.

We look forward to meeting with you.



## Tuatapere Lions Club

John Knowler



Greetings from the Tuatapere Lions Club - no mention of the weather!

Our hay drive is tidied up for this year and we had a most enjoyable evening recently where the club was able to extend to the long list of sponsors, helpers, truck owners and drivers and of course the representatives of the organisations who received the grants, a warm welcome.

The amount raised was \$40,000. After expenses etc, the following is the list of grant recipients:

- Hospice Southland \$10,000
- Clubs FREE Ambulance \$10,000
- Southland Multiple Sclerosis \$2,000

The balance of \$18,000 is to be held in trust for local education community groups and other requests.

Mention must be made of the \$7,000 donation to the Hospice from the Tuatapere Golf Club - being profit from their very successful Waitangi Golf Tournament.

Due to COVID there will be no slink skin pick up and this is quite a severe financial down turn for our free Ambulance Service.

The new shed is awaiting some fillings for the inside and an opening day is planned.

Our District Governor is visiting in September and we also have some pupils from Waiau Area School attending to tell us about Borland and the tournament held earlier on.

The club members thought and prayers are with Lion Les Kollat and wish him a speedy recovery.

Congratulations to Shawn and Lea Kollet on their recent arrival.

PLEASE HAVE YOUR ARTICLES, NOTICES, OR  
UPDATED ADVERTS FOR THE WESTERN WANDERER

SENT IN  
BY **20th of September**  
(for October's Issue)

SEND TO: [yourwesternwanderer@gmail.com](mailto:yourwesternwanderer@gmail.com)

OR DROP A NOTE IN THE MAILBOX AT  
18 Orawia Road, Tuatapere

## Tuatapere Freight

LOCALLY OWNED & OPERATED

RUNS MONDAY TO FRIDAY  
WEEKENDS BY ARRANGEMENT

**Phone Brandon**

**027 436 4360**



## Shearing magazine

**Des Williams (editor)**

Tel 07 839 2891 : Mob 0274 833 465

Email : [shearingmag@xtra.co.nz](mailto:shearingmag@xtra.co.nz)

Member NZ Guild of Agricultural Journalists and Communicators (Inc)

**LAST SIDE PUBLISHING LTD**

PO Box 102, Hamilton 3240, New Zealand



**Wayne & Rachel Saunders**  
Qualified Butcher

**027 457 6350**

[rawfarming@yahoo.co.nz](mailto:rawfarming@yahoo.co.nz)

82 Clifden Highway  
Tuatapere



Cut up the way you want

Beef

Pork

Sheep

Venison

Other game meats

Traditional Smallgoods



## Hello, I'm New To Tuatapere!

*Lynley McKerrow*

*Celebrant, Preacher, Public Speaker, Southland's Town Crier.*

We (myself & husband Terry) have just moved to Tuatapere to live, in this last month, although I have been here many times over the years.

As you will see by my business card (at the top right) I am a Celebrant. All areas of Celebrancy from Weddings, to Funerals, house blessings or perhaps you need someone to conduct a wee service at a meeting you are having. All of these things I can do.

It's always nice, I think, to know what the 'newby' is about. Well here we go. I have lived in Invercargill for many years, and yes over that time have conducted many, many funerals, and weddings.

I have worked in different places in Invercargill and Southland - an Industrial Chaplain, then Chaplain within Rest Homes. Have worked with young people and for some time was a Foster Parent. Bus Driver, mentor, workplace supervisor. For the last six years I have been Southlands Town Crier opening, closing or being present at various functions.

I think my most important role in any of the workplaces, or communities I have lived in is being part of the answer not part of the question.

For now that seems to be enough but am happy if you would like to know more - contact me.

Do you need a speaker at a meeting of your Club or organisation? This is something I absolutely enjoy as I have a range of subjects I could speak on. Do you have a significant event or birthday where the Town Crier would add colour and ceremony? Or you may like to arrange your wedding or even pre-arrange a funeral. Please give me a call on the number on my card.

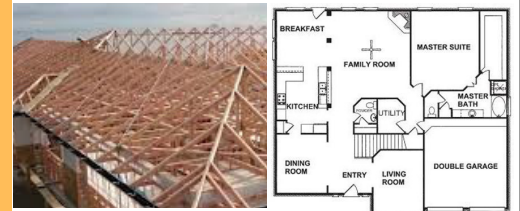
I'm here and willing to serve the community however I can.



## PAUL ANDERSON BUILDER

AVAILABLE FOR ALL YOUR  
BUILDING REQUIREMENTS.

NO JOB TOO SMALL.  
COMPETITIVE RATES.  
REFERENCES AVAILABLE!



**Mobile: 027 890 3602**  
thetakis@outlook.com

## TUATAPERE HANDYMAN SERVICES

**Barry Bennett**  
**(03) 226 6730**

- **Painting - Interior/Exterior**
- **Waterblasting**
- **Carpet & Upholstery Cleaning**
- **Spider & Fly Spraying**
- **General Repair Work**
- **Lawnmowing**
- **Hedge Trimming**
- **Weeding**



*Shirley Whyte*  
Your local real estate specialist living & working in Western Southland  
now also an Accredited Justice of the Peace.



for:   
Friendly service, reliability, sound local knowledge  
in Western Southland, Te Anau & Stewart Island  
All enquires welcome - all calls answered

**Harcourts**  M 027 504 52200 O 03 214 4080  
E shirley@harcourtsinv.co.nz  
W www.harcourts.co.nz

Holmwood Real Estate Ltd Licensed Agent REAA 2008

**DRAKE**  
PLUMBING & DRAINLAYING LTD

C: 0274 247 102  
T: 03 225 8652  
E: admin@drakeplumbing.co.nz

**KIERAN DRAKE**  
Certifying Plumber  
& Drainlayer

Specialising in  
Dairy Conversions  
Rural Fencing  
Post & Rail

**H Gill Fencing,**  
Eastern Bush  
Phone 021 225 5489  
After Hours 03 225 5488  
Email hamish@hgillfencing.co.nz






**accelerate**  
PHYSIOTHERAPY

office@acceleratephysio.co.nz  
60 Deveron Street, Invercargill  
(off street parking)  
**0800 291 475**

Accelerate is a gentle form of exercise, effective in providing long term solutions  
after an injury, especially low back pain.









As in:  
Fracture  
Dizziness  
Work Injuries / Ergonomic Onsite  
Assessments & Educations  
Pilates

We have interest in:  
Spinal/Back & neck injuries  
Sporting Injuries  
Running, Cycling & Multisport  
Men & Women's Pelvic Health  
Acupuncture  
Balance  
Workplace  
Work Evaluation

**Andrea Murray**  
Dip PT/OT Dip M.T.

**Joel Barnes**  
BPHYT, BExSci

**Andrea Robertson**  
BPHYT, PG Cert ACUP

physio.co.nz   Find us on facebook **www.acceleratephysio.co.nz**

## Kia ora, Bula Bula, Nihao Western Wanderer Readers

Happy School Days to Alex and Fletcher who we welcomed to Kowhai class. All the best to Kaleb as he heads away to new adventures; we wish you and your family all the best. Term 3 has been jam packed with learning;

We've had a school wide Oral Language focus this Term with Poetry Recitals for our Year 1-3 students and Speech Presentations for Years 4-8. Thanks to our Guest Judges Anne Horrell and Richard Slee who were tasked with selecting our finalists for Cluster Speeches. There was impressive content with a variety of relevant, informative and entertaining topics. Our Year 1-3 students memorised a variety of sophisticated poems along with expression in voices, eye contact, and with suitable pace and volume. Tumeke mahi tamariki!

Winter Sport has continued for our Year 3&4 and Year 5&6 hockey teams competing in the Invercargill Primary Competition. Our Year 3&4's are 1st equal going to finals. Our Year 7&8 hockey team competes as part of the Junior High Comp. The combination of players from HVP, OPS and WAS has resulted in a final playoff for 1st or 2nd - well done! Our Year 5 and Year 6 teams participated in the Southland Festival of Netball in Invercargill, thanks to the support of Kylie, Jayne, Jaimee and Suz. Thank you Fleur for organising umpires for our teams. Alyssa and Natalie from Waiau Area School were fantastic umpires for our teams games - thanks!



As part of the 2021 Miharo Polyfest our students were entered into the Art Exhibition by Christina Vaughan with a combined presentation from HVP and WAS students. The focus on the Waiau River has provided a voice for our children to share their learning about being kaitiaki/guardians of our awa. Two students have been selected to join the Waiau Rivercare Group in Wellington for the Select Committee Parliamentary Hearing. Fingers crossed for Libby, Tomas and Jen in their journey to Parliament.

Throughout the Term we have been rehearsing regularly for Polyfest. Our learners continually step up to the challenge of learning including Maori and Samoan language as we develop melodies, lyrics and actions to illustrate the narrative of each song. HVP Year 7&8 students have demonstrated leadership in learning poi, haka and sasa. The power of performing in unison and achieving a whole school performance package is just amazing! We can't wait for our friends and families to see, whether it is the virtual world initially and then real life eventually! As we develop learners for life, we look to provide opportunities for learning outside the classroom with a range of activities that are authentic, hands-on and interactive while building on classroom learning. "Always Our Best/Tonu te tatou pai". Stay warm and safe and we will see you soon.

**Nga mihi nui,**  
Julia Waikato, Tumuaki/Principal



## Registered **ELECTRICIAN**

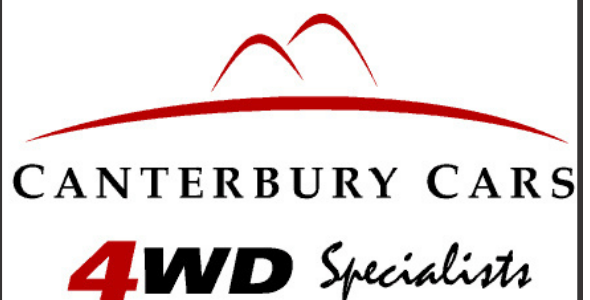
For all electrical work  
*No job to small*  
A/Hours service available

**Jay Brownlee**  
8 Carlyle Street, Tuatapere 9620  
A/H 03 226 6673  
Mob 027 4965 863  
sparkieintuatapere@gmail.com

## **FORDE SHEARING LIMITED**

Available for all new and existing clients

For all your shearing and  
crutching requirements  
Please phone Darin or Julie Forde  
(03) 235 8853  
027 229 7760



**For all your vehicle requirements**

**Cars, utes, 4WDs, vans**

**Finance available**

**Contact: Murray Dowling**  
**027 556 2655**

**Visit our website**  
**[www.canterburycars4x4.co.nz](http://www.canterburycars4x4.co.nz)**



# Lion's Park Playground

Anne Horrell, Deputy Chairperson, Tuatapere Community Board

Recently the Southland District Council did a thorough review of playgrounds within the Southland district. Although some items of playground equipment are now deemed unsafe and require removal; on the positive side new pieces will be installed. The latest in playground equipment aims to help many aspects of a child's physical development and, in fact, new equipment must reach a standard of safety and prove it helps physical coordination, motor skills, balance etc. Many items of playground equipment we grew up with did exactly the same thing-but perhaps there was less analysis on physical benefits! For us-it was all good fun-and so it should continue to be! I'm sure we all benefited from swinging, balancing, climbing and playing in playgrounds-not just due to the equipment but also fresh air and companionship.

Two pieces of play equipment are situated in the small 'Lions' Park' which is near our wonderful sausage sign. It has been identified that, due to the close access of a busy road, these two items will be removed. We are very sorry for those families who use this equipment. We hope that you can just go a little further to the Half Mile playground and enjoy the new pieces which will be installed there!

## CLEANING POSITION

Cleaner required for house/farm accommodation, one day a week (8 hours) in the Blackmount District.

Please phone

**Trudy (03) 225 8899 or Nicky (03) 225 5094**

## FOR SALE

**1 x Lambing Trailer**  
complete with lamb boxes on side  
Excellent order. \$775.00 plus GST

### **2 x EL Lamb Warmers**

1- Latest Model \$125

1 - smaller - ideal for pets \$50

To inspect please phone **John Knowler**  
**(03) 226 6755 or (03) 236 8393**

## Landscape Garden Design

What do you want  
from your garden?

Whether building new or  
revamping your existing garden  
an overall plan is essential.

### Free Initial Site Visit

From a few questions to get  
you started, to a full landscape design.



Village Green  
Garden Design

## Sewing and Mending Services Available

Experienced machinist offering fast, reliable service with very reasonable rates.

I will mend/make anything from zip replacements to curtain making - just ask!

Free quotes and pick-up delivery service within Tuatapere.



Contact **Deborah**

**(03) 226 6783 or 021 0305 667**



Southern Land & Water Planning

We specialise in:

**Resource consents**

**Farm environmental plans**

**Policy advice**

**DOC concessions**

**Landscape plans & assessment**

We take care of the paperwork,  
so you can do what you do best!

Sonya: 027 5050 077

Rebecca: 027 4246 129

[www.slwp.co.nz](http://www.slwp.co.nz)

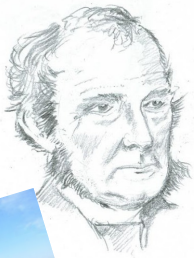
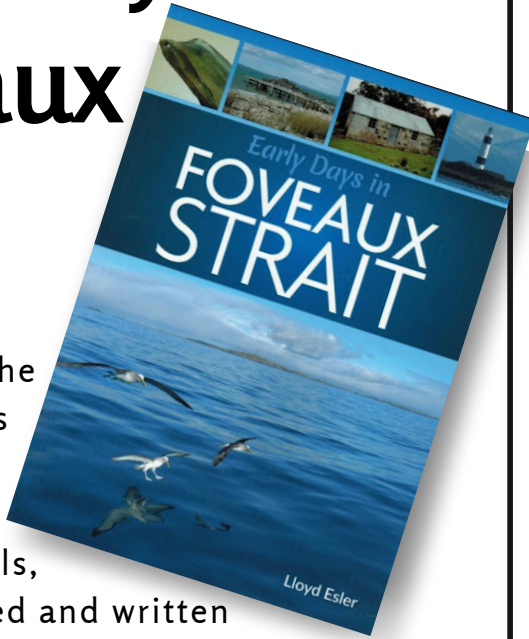
Locally owned & operated

# Early Days in Foveaux Strait

**A new resource!**

In response to the Prime Minister's call for more New Zealand history in schools, I have researched and written 'Foveaux Strait – the Early Years'. This is the history of Southland up to about 1865. It includes the Maori settlements, explorers, surveyors, missionaries, whalers and sealers, Treaty, Murihiku and Rakiura Purchases, land sales, shipping and shipwrecks in 200 pages. It is a successor to John Hall-Jones' 'The South Explored' and written to fill a gap in our knowledge of Southland's rich history.

**\$25 plus \$4 postage if required.  
(Note rrp is \$35)**



**Contact Lloyd Esler (03) 213 0404  
[esler@southnet.co.nz](mailto:esler@southnet.co.nz)**

## CHAINSAW SHARPENING

All chainsaw chain sizes precisely sharpened and rakers taken down accordingly, guaranteed results  
**Chain only \$10 Taken Off & Refitted \$13**  
Please phone (03) 2266940 evenings

## WANTED TO BUY

Possum Fur, Hard deer,  
Antler, Deer Velvet.  
Phone Leith 027 496 3721



## DAGWOOD DAGGING

Available now to all new and existing customers for all your crutching requirements.

3 Stand or Single trailer available  
7 days a week, wet or dry.



No job too big or too small.

Competitive rates

**Jeff Chambers**

027 3042 241

For all your fencing requirements

## WESTERN FENCING

SHEEP | DAIRY | DEER



Call BEVAN 0277 413 213



## MR STEEL

TUATAPERE

**PH: 027 276 6816**

MALCOLM

**For all your engineering,  
steel fabrication and repair needs!**





*I write this recipe while we are in a Level 4 lockdown and we are all longing for that day when we can explore the world again. One of my favourite countries to holiday is Bali. This curry takes me right back to exploring their beautiful country.*

## Balinese Chicken Curry

### Ingredients

- 4 chicken breasts, skinless
- 1 medium onion
- 3 cloves of garlic
- 2 mild red chillies
- ½ cup cashew nuts
- 1 heaped tsp ground turmeric
- 5 tbsp lemon juice
- 2 tbsp dark soy sauce
- 2 tbsp brown sugar
- 2 tbsp grated fresh ginger
- 2 tbsp rice bran oil
- 1 tin coconut milk



### Method

Cube chicken and sit aside. Combine roughly chopped onion, garlic, chillies, cashew nuts, turmeric, lemon juice, soy sauce, sugar, and ginger in a food processor. Blend until the mixture forms a paste.

Heat oil in a heavy based pan and add the blended spice and nut mixture. Fry this, stirring to prevent sticking, for 4-5 minutes to let the flavours develop.

Add the chicken and cook for a further 15 minutes.

Add the coconut milk, reduce the heat to low and simmer uncovered, stirring occasionally, until chicken is tender and sauce has thickened (about 15-20 minutes).

Serve with rice.



**HARRY'S**  
MACHINES  
EARTHWORKS  
027 304 3714




\* 13 Tonne Digger \* 5.5 Tonne Digger \* 2.7 Tonne Digger- dry hire or operated  
 \* Tip Truck \* Bob Cat \* Augers \* Post Driver \* Tree Saw & Hedge Trimmer

\* Tree Trimming \* Post Driving \* Fencing \* Cleaning of Wintering Sheds \* Site Clearance \* Cartage \* Graveling \* Lane Maintenance \* General Earthworks

For all enquiries and bookings please contact Lance or Alice Harris  
 Lance: 027 304 3714  
 Alice: 027 270 0363  
 Email: lanceharris533@gmail.com  
 Check us out on facebook- Harry's Machines



**BEN MCMASTER**  
**BUILDING**

Ph: 027 202 7955  
benmcmaster@live.com

- Licensed Building Practitioner
- Sheds, renovations & new homes
- Based in Western Southland

*You dream it, we'll build it*

# WAIAU VALLEY SHEARING LTD



**Simon de Vries**  
**Julie Heaps**  
**027 840 9867**  
**03 226 6212**



These visual word puzzles are called Rebus puzzles. They are great fun to solve on your own or with a group to encourage a little friendly competition! (Answers next issue!)

1. <b>FACE</b>	2. <b>EGG EGG HAM</b>
3. <b>BUR</b>	4. THUMBS THUMBS THUMBS THUMBS THUMBS THUMBS...
5. TEEF FEET TEEF	6. FAMILY <b>SHEEP</b>
7. po <b>FISH</b> nd	8. ISSUE ISSUE ISSUE ISSUE ISSUE ISSUE ISSUE ISSUE ISSUE
9. <b>TIME</b> a b d e f g h i j k l m n o p q r s t u v w x y z	10. DAYSALLWORK

# Looking for a babysitter or someone to mow your lawns?

Well, you're in luck!

I'M A RELIABLE TEENAGER  
LOOKING FOR SOME WORK

Contact Jay on  
027 242 2890



JOHN TIMPANY Craftsman

022 046 1402

7 Settlement Road  
Papatotara  
Tuatapere, Southland

Furniture

Native Timber & Timeless Design  
Signs Carved & Shapes Shaped  
Small Structures Erected



## Apply now for Meridian's Power Up Community Fund

At Meridian, we're committed to doing good things with our energy. That means good for people, and good for the environment.

We're proud to back local projects in the communities around our wind farms and hydro stations with our Power Up fund.

With Power Up, your community has a say on what initiatives we support and fund. Managed by a panel of locals and Meridian staff, we're working together to build strong, sustainable communities.

Power Up Manapouri provides grants for projects in Te Anau, Manapouri, Clifden and Tuatapere.

### How to apply

Applications for the next funding round are open until midnight on 26th September 2021.

For more information and to apply:

- visit [meridian.co.nz/powerup](https://meridian.co.nz/powerup)
- email [community.fund@meridianenergy.co.nz](mailto:community.fund@meridianenergy.co.nz)
- call 03 357 9732





# **WAIAU TOWN & COUNTRY CLUB**

## **Tuatapere, Southland**

### **Position: Club Manager - Full Time**

We are looking for someone to take over the day-to-day operations of our club and run our dedicated team. We offer good home cooked meals, family friendly hospitality, a great place for locals to enjoy a meal, beverage and socialise. We have an excellent space for functions and large group gatherings.

Ideally, the person would be experienced in the hospitality industry and hold a current Bar Managers Certificate or be in a position to obtain one. Duties include hosting, rostering, ordering, bar duties, barista, gaming, stocktake, administration duties and the overall smooth running of the club to ensure a great experience for guests.

Start date, early to mid-October 2021 but is negotiable for the right candidate.

Email your CV and cover letter to: [waiautcc@gmail.com](mailto:waiautcc@gmail.com)  
For more information call **Gary** on **027 698 8360**

**Applications close 24 September 2021**

### **Casual Bar shifts & Casual Chef shifts available!**

**Casual Bar shifts:** Weekend work (Bar Managers Certificate preferred).

**Casual Kitchen Hand shifts:** to help in the kitchen during busy times and functions.

**Casual Chef shifts:** to help our team during busy times and functions, ideally with experience in grill cooking, hours are mainly weekends.

Email your CV and cover letter to: [waiautcc@gmail.com](mailto:waiautcc@gmail.com)  
For more information call **Gary** on **027 698 8360**

**Applications close 24 September 2021**



# BARRETT *Ag* LTD

FULL SILAGE AND BALEAGE SERVICE



**ALL CULTIVATION**  
INCLUDING DIRECT DRILL  
AND STRIP TILLING - PRECISION PLANTING



**EXCAVATION**  
20 TONNE DIGGER/ GRADER  
D85 BULLDOZER/ ROLLER  
TIP TRUCKS AND TRAILERS



Barrett Ag Ltd  
Ph: Kahu- 027 5183 448  
E: [barrettagltd@gmail.com](mailto:barrettagltd@gmail.com)  
FB: Barrett Ag







### COVID VACCINATION CLINICS

Will be held again at Tuatapere Medical Centre from this Thursday 9th September onward—please use the Maternity entrance at the east end of the building

**To book your vaccine head to**

<https://bookmyvaccine.covid19.health.nz/>



**Margaret F Thomas, Board Chair**

arpad@xtra.co.nz

03 226 6104

027 231 5581

Well, here we are again in lockdown. I am writing this on Friday 20th August 2021. I have a funny feeling we will be staying in lockdown. We don't want Covid 19 down here. Please wear a mask and stay home.

The Senior Citizen building has had the iron on the roof repaired. A member of the public alerted us to this. Thank you. They reported this through the RFS system.

Thank you, Owen from South Roads. He trimmed the shrubs around the Recycling Centre and the Happy Valley Road.

Megan from SDC circulated the survey forms to the ratepayers who pay rates to the Clifden Hall. The results will be collated soon.

The workshop meeting on Tsunamis has been re-scheduled because of the presenters being unwell.

I welcomed several ratepayers to our August Tuatapere Te Waewae Community Board Meeting. They wanted to speak in the Public Forum section of the meeting on the 3 Waters Debate that is before our Councils and the issue of the planting of trees on good productive farmland and the ongoing effect it could have on our community.

Two further pieces of work that the SDC and the Community Boards will be undertaking shortly are the Natural Features and Landscapes Survey and the Open Spaces Strategy.

If we're still in lockdown - stay safe, stay home.

**George Harpur, SDC Councillor, Waiau Aparima Ward**

Welcome to the month of September, spring and some sunshine will be great. The pressing topic currently before Council is the 3 waters debate. Up until 17/08/21 we have had very little concrete data from central Government to form some hardline

approaches as to the future of this projected issue. Many stories have been circulated based on personnel assumptions (some may turn out to be correct) and with the crown doing a large dirty water advertising campaign there is reason for doubt as to the sincerity of the project. Lack of time for consultation among the ratepayers, initial lack of information to the SDC and its Community Boards and an indication of whether to opt in or out by 1/10/21 all very serious concerns. Many questions have been asked of the LGNZ team and likewise the DIA and some are slowly being answered and sifted through. The Mayor and his Deputy along with the CEO were to attend a meeting in Christchurch 23/09/21 to further discuss many of the issues arising however covid has delayed this.

On the local scene it was great to see a great turnout of concerned locals attend our Community Board meeting on Monday evening. 16/8/21 Two well-presented and well researched issues were raised. Jaspreet Boparai spoke on concerns over the 3 waters (of which I have already commented) and Chris Bogers presented some excellent detail on the invasion of forest plantings on once productive grazing land, citing the effects this practice has on the local infrastructure, IE schools, local industry, farm employment and also the shading effect on the local roads during the winter months. As a long-term resident of the area this does give me serious concern as I have seen the long-term effects of this practice over the years with large tracts of land being converted. Our shearers, fencing contractors, transport operators, have in many cases centralized for economic stability, leaving our rural regions wondering where the next generation of workers will come from for the remaining infrastructure. Some serious thought needs to go into this I believe.

As I write this we are into our third day of a Level 4 lockdown. Hopefully as you read this, we're no longer in lockdown. However, if we are still in lockdown, please stay inside and within your bubble til we beat this together.

Cheers for now.



**Phone: Anita Green 027 506 2418**  
 Tuesday 9-5pm, Thursday 10-8pm, Friday 10-5pm - Appointments are encouraged.

**CHAMBERS REPAIR SERVICE**  
**45 Half Mile Road, Tuatapere**  
**Ph: (03) 226 6654**

- 24 hour Self Service Fuel
- Full Mechanical Workshop
- NZ Post Centre
- Agents for Wide Span Garage



Bring your lawnmower in for a service now & beat the rush

**MTA GIFT VOUCHERS AVAILABLE**

**PLATE METER SERVICES**  
 TROUGH CLEANING SERVICES

PASTURE METER READING THAT'S QUICKER AND EASIER, WITH AT THE GATE REPORTS

- Specialist in quality pasture meter reading with advanced sensor technology
- Provide 200 measurements per second or 18,500 readings over a single 500m pass
- Provides a fully integrated electronic support system
- Provides a secure web-based storage of information with easy access
- Prompt generated feed wedges for rapid decision making and seasonal comparisons
- Generate reports at the gate, supplying valuable pasture cover data and comparable results every time
- Improve heath & increase animal hydration
- Enhance production & improve water quality
- Reduce bacterial/algae contamination of trough water

**CLEAN TROUGH WATER MEANS IMPROVED LIVESTOCK HEALTH**

Now 2 bikes available for pasture metering



Brett George • P 027 351 3408  
 E [platemeterservices@gmail.com](mailto:platemeterservices@gmail.com)



# Ratty Says ...

Waiau Memorial Library

Guess what I learned to make?  
PIZZA!!!! Woohoo! My favourite food in the whole world. The Rural Women held a cooking class at WAS during the last school holidays.



When I heard they were going to teach pizza making I got so excited. Have I ever mentioned that I LOVE pizza?

I was going to learn how to make cheese rolls as well. I'd never had one before so I was curious. They have cheese in them, that's a good start. I got to measure all the ingredients out and mix everything up. The dough was very sticky and kept sticking to my paws. It might have been because I added too much milk to the flour. I didn't read the part where it said to 'add the milk slowly and leave some liquid behind'. Ooops, my bad. I finally got everything right, ( I had help ) and a grown up put the pizza in the oven. I'm still not allowed near hot appliances, something to do with standing on a hot stove. It took FOREVER for the pizza to cook.



My tummy was rumbling the whole time. Then I had to wait for it to cool down, time passes very slowly when you really, really want to do something. Like eat pizza. It was YUMMO!

Next were the cheese rolls. The only thing I knew about them was that they were made up of bread and cheese. Turns out they're made from lots and lots of cheese. Other stuff went into the mixture but I didn't take notice because I was too busy keeping an eye on the cheese. I wanted to nibble on some but someone was watching me watch the cheese so I had to wait until it came out of the oven. I couldn't wait to eat one or two. They were very.....cheesy. I think I'll stick to my cheese pizzas.

I had lots of fun and made a big mess on my bench but I did clean it up, kind of. I'm not sure what the teachers would say if they knew a rat had been sitting on the kitchen bench? Sshhhh, don't tell them, they'll never know.



## Tui Base Camp



Op

ay!

We are extending our 2nd Year Anniversary Celebrations & Specials to the whole month due to lockdown! **Alert Level 2 we are open with covid rules (everyone needs to scan or manually sign in) and also number restrictions. Keep an eye on Facebook for our latest updates!**

### Lambing/Calving Specials

**Buy a 10 pack of Frozen Pies—\$45**

Choose between Chicken, Mince, Mince & Cheese, Seafood, Venison, Butter Chicken, Bangers & Mash and Sausage Rolls.

**Buy 5kg+ of Sausages and get 10% off**

**Soup of The Day 1L \$15** (2-3 serves)

**Seafood Chowder 1L \$25** (2-3 serves)

September.  
Specials Valid for Month of August.

(Available for everyone)

**For all of your dine in and takeaway requirements including:**

In-house roasted Amore Coffee

In-house made pies, sausage rolls, cheese rolls

Range of breakfast options

Packed lunches

Catering

**Phone: (03) 226 6250**

[www.tuibasecamp.co.nz](http://www.tuibasecamp.co.nz)





# **SPRING IN-STORE FOR SEPTEMBER SPECIALS**

 <p><b>\$13.99</b> EACH</p> <p>Jim Beam: CC 4.8% 440ml 4pk cans &amp; 7% 355ml 4pk cans (inc zero) cans</p>	 <p><b>\$15.99</b> EACH</p> <p>Woodstock (incl Zero) 7% 330ml 6pk cans</p>	 <p><b>\$21.99</b> EACH</p> <p>Cody's (incl zero) 7% 250ml 12pk cans Woodstock 5% 12pk bottles</p>	 <p><b>\$22.99</b> EACH</p> <p>Cruiser 7% 12pk can range</p>	 <p><b>\$2 Not Stocked</b> EACH</p> <p>ODD Company 10pk can range</p>	 <p><b>\$22.99</b> EACH</p> <p>Woodstock 250ml 7% 12pk cans (incis zero / ex raspberry)</p>	 <p><b>\$24.99</b> Not Stocked</p> <p>Rinse 10pk can range</p>			
 <p><b>\$24.99</b> EACH</p> <p>Part Time Rangers Jack Daniels 4.8% 330ml 10pk can ranges (incis no sugar)</p>	 <p><b>Not Stocked</b> EACH</p> <p>Effen Vodka 10pk bottle range JB Gold; CC 7% 12pk cans</p>	 <p><b>\$24.99</b> EACH</p> <p>Smirnoff Ice Double Black 7% 12pk can range (Guarana \$27.99)</p>	 <p><b>\$26.99</b> EACH</p> <p>Long White 10pk bottle range</p>	 <p><b>\$29.99</b> EACH</p> <p>Tui Bourbon Tui Vodka Soda 7% 18pk range</p>	 <p><b>\$29.99</b> Not Stocked</p> <p>Jack Daniels &amp; Cola Double Jack 330ml 10pk cans</p>	 <p><b>\$35.99</b> EACH</p> <p>Jim Beam Canadian Club 18pk 330ml cans</p>			
 <p><b>\$9.99</b> EACH</p> <p>Jacobs Creek (ex Sparkling range) Montana Classic ranges</p>	 <p><b>\$11.99</b> EACH</p> <p>Wolf Blass Yellow Label range (ex PN)</p>	 <p><b>\$12.99</b> EACH</p> <p>Villa Maria Private Bin range (ex PN/Syrah)</p>	 <p><b>\$15.99</b> EACH</p> <p>The Ned range (ex PN)</p>	 <p><b>Not Stocked</b> EACH</p> <p>Pasqua 1.5ltr range Matawhero range (ex PN)</p>	 <p><b>\$26.99</b> EACH</p> <p>Malibu Kahlua 700ml (incl passionfruit)</p>	 <p><b>\$34.99</b> EACH</p> <p>Ivanov Seagers (incl lime) 1L</p>	 <p><b>\$35.99</b> EACH</p> <p>Larios 1L JB Honey 700ml</p>	 <p><b>\$36.99</b> EACH</p> <p>Jameson Jameson Cold Brew Absolut; Beefeater flvrd ranges all 700ml</p>	<p><b>\$38.99</b> EACH</p> <p>Jack Daniels (incl Honey, Apple &amp; Fire) El Jimador range (Ex Anejo) all 700ml</p>
 <p><b>\$39.99</b> EACH</p> <p>Larios Rose Citrus Larios 12 1L</p>	 <p><b>\$42.99</b> EACH</p> <p>Jim Beam 1L Canadian Club (incl spiced) 1L</p>	 <p><b>\$49.99</b> EACH</p> <p>Wild Turkey Bombay Sapphire 1L</p>	 <p><b>\$54.99</b> EACH</p> <p>Jagermeister Mt Gay Eclipse 1L Cointreau 700ml</p>	 <p><b>NOT PRICE!</b> TWO FOR \$60.00</p> <p>Jim Beam 700ml (or \$31.99 each)</p>	 <p><b>\$59.99</b> EACH</p> <p>Maker's Mark 1L</p>	 <p><b>\$59.99</b> EACH</p> <p>The Glenlivet Founders Reserve 700ml</p>	 <p><b>\$64.99</b> EACH</p> <p>Chivas Regal 12yr 1L</p>	 <p><b>Not Stocked</b> EACH</p> <p>Kingsfisher Strong 7.2% 500ml cans</p>	<p><b>Not Stocked</b> EACH</p> <p>Fortune Favours 6pk range</p>
 <p><b>\$19.99</b> EACH</p> <p>Somersby 10pk can range</p>	 <p><b>Not Stocked</b> EACH</p> <p>Tiger; Tiger Crystal; Sol 12pk bottles</p>	 <p><b>\$21.99</b> Not Stocked</p> <p>Haagen 15pk bottles</p>	 <p><b>Not Stocked</b> EACH</p> <p>Orchard Thieves 12pk range</p>	 <p><b>\$23.99</b> EACH</p> <p>Steinlager Pure Stella Artols incl Legere 12pk</p>	 <p><b>Not Stocked</b> EACH</p> <p>Asahi 12pk bottles</p>	 <p><b>Not Stocked</b> EACH</p> <p>Monteith's (classic &amp; batch brewed) 12pk range</p>			
 <p><b>\$24.99</b> EACH</p> <p>Lion Red; Waikato; Speights Summit 15pk bottles</p>	 <p><b>\$26.99</b> EACH</p> <p>Steinlager 15pk bottles</p>	 <p><b>\$29.99</b> EACH</p> <p>Heineken 15pk bottles</p>	 <p><b>\$36.99</b> EACH</p> <p>Tui; Export Gold; Extra Low Carb; DB Draught 24pk bottles</p>	 <p><b>\$39.99</b> EACH</p> <p>Export 33 24pk bottles</p>	 <p><b>Not Stocked</b> EACH</p> <p>Carlsberg 24pk bottles</p>				

Promotion period between 1/09/2021 to 30/09/2021. While stocks last. Promotion only available at participating stores. Please contact your local store to confirm whether they are participating in the promotion and check the pricing in-store prior to purchase. Online pricing will vary.



**100% NEW ZEALAND OWNED AND OPERATED**  
thirstyliquor.co.nz

FOLLOW US ON SOCIAL MEDIA



**ASK ABOUT LOYALTY CARD BENEFITS & GIFT VOUCHERS**







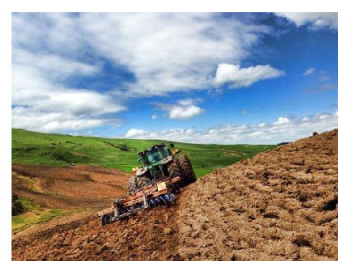
**Rabco Ag Ltd** – 021 362 766 – [admin@rabco.nz](mailto:admin@rabco.nz)  
Agricultural Contracting Specialists - Western Southland



**Full silage  
& baling  
service**



**Cultivation – including Direct Drill & Precision Drill**



**Effluent – Excavators - Hedgetrimming**





## Pioneer Families of the Waiau Valley

### CHARLTON George of Tuatapere

**Molly** married Les Guthrie, who along with his brother Ernie owned 2 sawmills up the Groveburn - later bought by Port Craig. Les was of an impulsive nature. During the War fuel was rationed by the mills could get extra rations for the business. All fuel came in 44 gallon drums. One night Les lit a match to see down into the drum and check to the level. There was a mighty explosion and the drum, plus the carshed and the car itself disintegrated. Les was singed but unharmed! He was also noted for having a short fuse temperamentally. He was having trouble with a telephone operator and was shouting and raving at her over the line. "Mr Guthrie, if you don't stop talking to me like that, I'll have your phone disconnected!" said the operator. "Don't bother," said Less, "I'll do it myself." - and ripped the phone off the wall and threw it through the nearest window! The grand gesture!

**Lex** Charlton spent much of his life locally, attending primary here and secondary at Southland Boys and Timaru Boys. He joined the National Bank in Tuatapere on leaving school, moving to Blenheim and Otautau before returning to Tuatapere. 1939-45 saw him overseas with the army. In 1945 he married Betty McKay - a local girl. He was a prominent sportsman at many sports, playing and coaching rugby, and playing tennis and cricket regularly at a skilful level. His banking skills led to his being asked to audit many local organisations' accounts, which he did for many year. In 1955 he bought the dairy beside the Memorial Hall and served the public from there for 25 years (like his father before him - it must have been in his blood!) When they retired to Erskine Street he continued his auditing work. He died in 1996 and Betty six months later.

**Nancy** had a rather sad story. She died in 1944 aged 26yrs, having been engaged to Ray Watson of Otahu Flat. Ray was killed in 1944 when on a special ops flight to the French Resistance during the war. Ray is believed to have found out about Nancy's death that day. Grandfather William died also just three months later. He never got over the deaths of Nancy and Ray. Brother Lex meantime was over in Noumean fighting for his country and he couldn't get home.

**George Jr** still lives in Tuatapere, with his wife Elaine, working as did his ancestors in the sawmilling business and his children are still around too. You might have seen Elaine delivering the mail around town.

## WESTERN ELECTRICAL

2008 LTD

Electrical Solutions

Domestic | Industrial | Commercial

Quality Service at Competitive Prices

- New Builds, Rewiring & Alterations
- Dairy Shed, Farm & Industrial Maintenance
- Hotwater Element Replacement
- A/H Call Out Service Provided



Ph 03 225 8974 / 027 439 3787

Fax 03 225 8973

### MOUNTAINS EDGE CABINS MONOWAI

Hunting, Fishing, Mountain Biking,  
Kayaking & Tramping  
Cabin Accommodation

12 Cabins

Double and Single Available  
\$35.00 per person per night

Eftpos available

Full Kitchen Facilities, Showers, Toilets, Playground  
& the Tennis Courts right across the road!

We are 'pet friendly'

www.mountainsedgecabins.com  
Email: mountainsedgecabins@gmail.com

75 Turbine Drive, Monowai. Ph. 03 225 8267

## WaterForce

Irrigation Systems  
Pumping & Filtration  
Effluent Dispersal  
Water Management

20 Winton Hedgehope Highway, Winton

03 236 9805 www.waterforce.co.nz

0800 4 FORCE (4 36723)



# Waiau Town & Country Club

**Meals (homemade goodness)  
available Thurs, Fri, Sat & Sun  
from 4pm to 9pm.**

Family Friendly | Happy to cater for dietary requirements.  
Please pre-book for groups of 8 or more.

## Club Opening Hours:

**Mon - Thurs 4pm till close.**

**Fri 3pm - close.**

**Sat Noon - close.**

**Sun 3pm - close.**

## Book now for functions/birthdays etc

We can cater! Just call Gary to discuss options.  
**Gary - 027 698 8360**

## What's on at the Club:

**\*STEAK NIGHT** - every Thursday night  
only \$25 for a delicious steak meal.

**\*Bouncy Castle** - is at the Club on  
Thurs, Fri, Sat & Sundays during September,  
pop in and enjoy a meal & a drink while the  
kids burn off some energy on the bouncy castle.

**\* MEMBERS DRAW & RAFFLES**  
drawn every Friday night! Approx. 7.30-8.30pm.

**Keep an eye on our Facebook Page for  
more details on upcoming events**

### Annual membership/subs due from 1 st July.

Annual membership is \$50 or \$30 for pensioners.

Pay & collect at the club or pay online  
and we'll post your card out.

Everyone welcome to become a member, just pop in  
or call the club.

Phone: **03 22 66 489** | Address: 41 King St Tuatapere

Email: [waiautcc@gmail.com](mailto:waiautcc@gmail.com) | Facebook: [facebook.com/waiautcc](https://www.facebook.com/waiautcc)

| Courtesy Van Available |

**We look forward to seeing you!**



**WAI AU AREA SCHOOL**

Year 1-13 Education

Live to LEARN, LEARN to Live

## Kia ora Western Wanderer Readers!

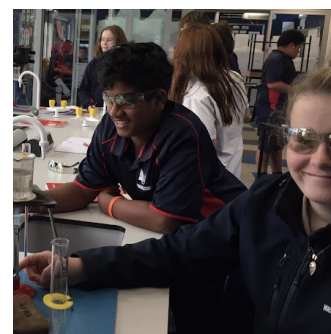
I trust you are well and are looking after  
yourself/one another during this Lockdown period.  
I appreciate there are people / families doing it  
tough. Hang in there.

*"Tough times never last, but tough people do."*

*~ Robert H. Schuller*

ERO visited us a few weeks ago and had their  
major audit review. They were extremely positive  
about WAS and what we're achieving. This report  
will be out shortly on the web.

Here are some 'proud of moments' pics. We are all  
very proud of WAS, especially our students.



## To Orepuki by Boat

"Hugh Erskine built, first of all, a flax maimai and lived there until a two roomed slab hut was built and here, he and his family, lived for 12 years until it was replaced by a bigger house. There were no roads in those days and there was only one way out to Orepuki -by boat. By two boats, as a matter of fact, because they had to row across the two mouths of the Waiau River, and there was a boat at each. The horse would have to follow behind the boat and the ride would be resumed at Waihoaka. From there the road to Orepuki was a track through the bush. In that flax maimai, where Hugh Erskine first lived with his young family, the first girl to be born in the Waiau District was born. Today she is Mrs Jim Young, who is living in the Tuatapere town-ship. On Saturday next Mrs Young will re-enact, at the celebrations, the cutting of the ribbon across the bridge as it was done by her mother many years before. Most of the river crossings, in the early days, were made by punt; but cattle had to be swum across the river at the mouth one at a time following the boat. As time went on it was found that the punts could not do the work, especially when they also had to contend with the varying conditions of the river. People would have to wait on one side for the pleasure of the puntman- and, sometimes, the puntman was unaccountably deaf to a hail! Representations were made from time to time to the government for a bridge across the river. The answer was always that the cost of erecting a bridge in such a sparsely settled locality was not justified. Finally, Hugh Erskine offered to build the bridge in return for the land around it. And, at last, the authorities began to see that there might after all be some grounds for acceding to the request of the settlers and so, after years of frustration, the bridge was finally opened in 1915.

The Papatotara section today is an area of smiling green fields with fine homesteads and healthy sheep and here, as in other farming areas, the drudgery has been taken off farming by mechanisation. But when William Erskine, Hugh Erskine's son, took up his block of land when he was a youth of 19 (he is 75 today), he was confronted with a breaking in task that would have daunted a lesser man. "Even then", he says 'I didn't do much till I was married and then I had to settle down.' Settling down, consisted of felling the bush and draining the swamps to allow breathing and living room and to prepare the land for grazing. Everybody lived in the bush- there was even a view of the Longwoods which stand out so clearly today for all to see. In those years of development there have been many changes in the method of land clearing, starting from the axe and the saw and the block and tackle operated by horse to pull the stumps out and when the stumps were wrenched clear they had to be cleaned of their soil. Later, the timber jack was introduced and that was considered a great innovation and this was followed by gelignite, which again simplified the operation. The traction engine followed this but it was not until the coming of the bulldozer and the excavator that the district really began to forge ahead.

(... more next issue) 25

## DTKINGS TRANSPORT LTD

We require **BULK SOWER OPERATORS** for our modern units based at Pukemaori. Applicants for this position would have a minimum Class 2 Licence but a four or five licence would be advantageous, if you live in Tuatapere or within the surrounding districts give me a call.

Financial assistance may be given to help obtain a Class 2 Licence.

You may have had some tractor / truck driving off road experience and want to further your interest in heavy transport. We are happy to help you into this position.

If you are reliable, have a can-do attitude and think you would be able to operate a bulk sower, then we have a position for you with good remuneration and allowances dependent on relevant experience, also you can join our free medical insurance scheme.

D T Kings transport operates under a drug and alcohol free policy; Successful applicants will need to pass a pre-employment test.

**Local company employing local people.**

For more information confidentially, on this position email or call

**Paul Williamson 03 2255899**  
**Careers@dtking.co.nz**



## Painting & Handyman Services

### Experienced Painter

I can help with all sorts of odd jobs too!

Gardening  
Lawn mowing  
Tree & Hedge Trimming  
General labouring



Phone **Luke Wikstrom 027 2773 925**

## TUATAPERE OUTDOORS & HARDWARE

For all your

Gardening tools, lawn care, garden hoses, insect and disease sprays, potting and compost.

We have those building requirements for that weekend job with a good selection of silicone, nails, screws and bolts.

New fishing rods and reels, fishing lures, good selection of soft bait, fishing nets, flounder and eel nets.



Good selection of giftware.

Come in, check out what we have.

### Contact:

Judy **027 225 8192**

Paul **027 890 3602**

Shop **(03) 226 6363**





**Agricultural Contractors servicing Western Southland and beyond.**

**BALAGE - SILAGE - GROUNDWORK - FEED TRADING**  
**Nigel 021 226 6156 / [fowlecontracting@gmail.com](mailto:fowlecontracting@gmail.com)**



# Your Local Graphic Designer & Printing Specialist

## McMAHON design studio

9 Cumnock Street, Wallacetown

P: 03 235 8967 M: 027 242 8109

E: mcmahondesign@outlook.com

*We offer a wide range of digital printing  
and graphic design solutions.*

LOGO/EMBLEM DESIGN including full branding packages	CALENDARS - BOOKLETS - REPORTS
ADVERTISING & SIGNAGE DESIGN	NEWSLETTERS - MAGAZINES - CATALOGUES
SOCIAL MEDIA GRAPHICS & EMAIL SIGNATURES	ALL OFFICE STATIONERY
PHOTO EDITING & CUSTOM ART	PERSONALISED STATIONERY & CARDS
CERTIFICATES - PRIZE CARDS - PROGRAMMES	PRESENTATION & PROMOTIONAL ITEMS
WEDDING & EVENT STATIONERY	<b>AND MUCH MORE...</b>

Get in touch with us today for your free consultation and quote!

## WE ARE OPEN DURING ALERT LEVEL 3 & 4

WITH CONTACTLESS ORDERING, PAYMENT AND PICKUP FOR YOUR SAFETY.

If you are an Essential Business or Service we are open to help you if you need our services.

### We can design and print:

Office Stationery, Health & Safety Documentation,  
COVID-19 QR Codes, Information Posters, ID Cards,  
Social Distancing Signs & Labels, Record Books/Forms  
and Social Media or Advertising Images

## SEPTEMBER Special Offer

# LABELS, LABELS, LABELS!

Get 20 x A4 Sheets of Pre-cut  
Colour Adhesive Labels

Gloss or Matt finish available in many shapes and sizes:



*These easy to use sheets are perfect for:*

Address Labels	Sticker Seals	Health & Safety Labelling/Signage
Invoice Reminders	Thankyou Stickers	Retail Bag Stickers
Product Labels	Gift Tags	and much more....

DESIGNED & PRINTED  
FOR ONLY  
**\$55**  
+GST & DELIVERY

Quote the code: **LABELS 20** or mention this advert when ordering to receive this special offer. Offer valid until Friday 1st October 2021.

## Design • Print • Copy

### OPENING HOURS:

Monday, Tuesday, Thursday: 8.30am - 4.00pm

Wednesday: 10.00am - 4.30pm

Friday: 8.30am - 1.00pm

Saturday: By appointment



# PROPERTIES WANTED!

Contemplating selling? You might be surprised by what your property could fetch on today's market

Contact Julie today for a free appraisal and to discuss how you could take advantage of this buoyant property market



**Julie Guise**

021 256 4164

julieguise@sre.co.nz



**SOUTHLAND REAL ESTATE LTD**  
Licensed under The Real Estate Agents Act 2008

# SOUTHLAND REAL ESTATE LTD

Licensed under The Real Estate Agents Act 2008

MREINZ

## For all your Accounting and Tax Solutions

Ask for Janice or Trevor England

**03 2266110**

Aparima Accounting Ltd

57 Main Road Tuatapere

## GREAT FREIGHT RATES

Same Day  
Door to Door  
Monday - Friday

General Light  
Freight Service  
No Rural Surcharge



- Fresh & Chilled Freight
- Meat & Vegetables
- Flowers & Chocolate
- Bottled Milk
- Prescriptions
- Vet Supplies
- Ag. & Vehicle Parts
- Hardware
- Oil & Lube
- Ammo & Chemicals

Invercargill - Winton - Drummond - Otautau  
- Tuatapere - Ohai/Nightcaps - Riverton

**027 340 5845**

bulletcourier8@gmail.com

bulletcourier.org



## CONTACT US TODAY

**Phone 03 221 7192**

**Fax 03 221 7194**

- **Excavators for general farmwork**
- **Laser guided drainage**
- **Gorse mulching & land clearing**
- **Lane maintenance**
- **Conversions**
- **Effluent Ponds**
- **Demolition**
- **20 tonne bulldozer, roller, grader**
- **Drain ploughing & alkathene laying**



### NEW FEATURE! STUDENT WRITING

*We are delighted to introduce our new feature! We will be sharing (with permission of course) pieces of writing from our local student community. Special thanks to our first student contributor - Year 13 Waiau Area School student, Malakai Mangion, for this piece she wrote last year as a Year 12. This was an English Assignment.*

SOCIETY

## FIFTY SHADES OF WHITE PRIVILEGE

White privilege, what is its true meaning?



WRITTEN BY: MALAKAI MANGION

'IN THIS DAY AND AGE' white privilege and racism are often associated as being the same thing... yes, white privilege stems from the same tree as racism but they are different. It is important to recognise that just because you have white privilege does not mean you are racist. Rather it is a latent bias committed by white people's lack of awareness that they hold this power. These privileges come in different forms, such as White Privilege as the 'Power of Normal' and White Privilege as the 'Power of the Benefit of the Doubt'. These are both results of racism that allow for the constant recreation of equity.

A simple everyday example of white privilege as the 'Power of Normal' is going to buy skin coloured band-aids but they only match the skin tone of white people. This example seems like a minor issue but if a supermarket has the majority of its products catered to one race and the needs of other races are segregated or put into a 'special' section it expresses something else going on beneath



the surface. A website called Teaching Tolerance sums up white privilege as the 'Power of Normal' by saying, 'White people are more likely to move through the world with an expectation that their needs will be readily met. People of color move through the world knowing their needs are on the margins. Recognizing this means recognizing where gaps exist.'

-----  
*'White people are more likely to move through the world with an expectation that their needs will be readily met. People of color move through the world knowing their needs are on the margins. Recognizing this means recognizing where gaps exist.'*

~ Corey Collins (What is White Privilege, Really?)

-----  
White Privilege also comes in the form of the power of the 'Benefit of the Doubt'. If someone consistently sees a certain race portrayed in a negative light on TV or from the media as an example, they will then stereotype and categorise them in that way. An example of this is police brutality on African Americans. Recent statistics show that a black person in America is 3 times more likely to be killed by the police than a white person. This was shown with the murder of African American George Floyd; he got arrested for allegedly using forged cash and died at the hands of a police officer, which sparked many protests around the world against police brutality. A professor at the Southern Methodist University describes the benefit of the doubt in a tweet saying 'George Floyd and I were both arrested for allegedly spending a counterfeit \$20 bill. For George Floyd, a man my age, with two kids, it was a death sentence. For me, it is a story I sometimes tell at parties. That, my friends, is white privilege.'

... to be concluded next issue. 29

## Alex Reid CONTRACTING

**Paddock Cultivation from  
Ploughing to Sowing  
Dry Hire available  
Aerating  
Direct Drilling  
Ridging  
Mulching**



### **Dairy Lane Maintenance**

Tip Trailers • Vibrating Roller • 2 Tip Trucks

### **Sheep Conveyor**

Drenching, Vaccination etc • 3 way draft

### **Large Skid Steer for calf shed cleaning, loading Muck Spreaders etc**

4 Muck Spreaders • 16,000 litre Slurry Tanker  
Pond Stirrer • Umbilical Slurry System



**Rural Contractors**  
NEW ZEALAND

**PHONE ALEX  
0212775308 CELL  
03 2255377 HOME**



**For Landscaping,  
Land Maintenance,  
Gravel Supply & Cartage**

**GRADES OF CRUSED & SCREENED GRAVELS,  
ALKATHENE LAYING, ROOTRAKING,  
FARM TRACKS, DAIRY LANES**



**ELEVATOR SCRAPER,  
BOBCAT & ATTACHMENTS,  
LANDSCAPING, TRENCHING AUGERS**

**Supplies of Gravel Ex Waiau River**

River Run Screened Grades Concrete Gravel Pea Gravel  
Rejects for soak holes Crushed - AP30 & AP65  
Peebles for Sheep and Cattle yards and calf sheds  
Fines suitable for cow lane capping

**K J SUTHERLAND  
GRAVELLING &  
AGRICULTURAL CONTRACTOR  
2475 OHAI-CLIFTON H/WAY  
ORAWIA RD2 OTAUTAU 9682  
Ph 0274 367 934**

**K.J. Sutherland  
Contracting  
Bobcat T190**

**With attachments: Landscape Rake,  
Augers and Trencher**

**Suitable for all landscaping, shed and yard  
maintenance**

**Muck-spreader and tip trailer available**



**PHONE KEVIN  
027 367 934 / (03) 225 5716**

**YOUR BUSINESS CARD  
COULD BE HERE!**

**CONTACT  
yourwesternwanderer@gmail.com  
FOR PRICING/DETAILS**

**INDEPENDENT MIDWIFE**

**ISOBEL DEVERY**

***Caring for women throughout  
Pregnancy, Birth till six weeks  
Post Natal.***

***Choices for place of birth,  
Home or Winton Birthing Units  
or Kew Hospital.***

***Free pregnancy tests  
available on request.***

**Phone: (03) 22668822  
027 2267020**



## Tim and Superior go the extra mile

Are you frustrated with the lack of service from your local fertiliser consultant, peddling the same advice year after year regardless of your production outcomes, environment and sustainability?

Give **Tim Adcock** of Superior Fertiliser Specialists a call. He will bring a whole new meaning to service and client/advisor relationships.

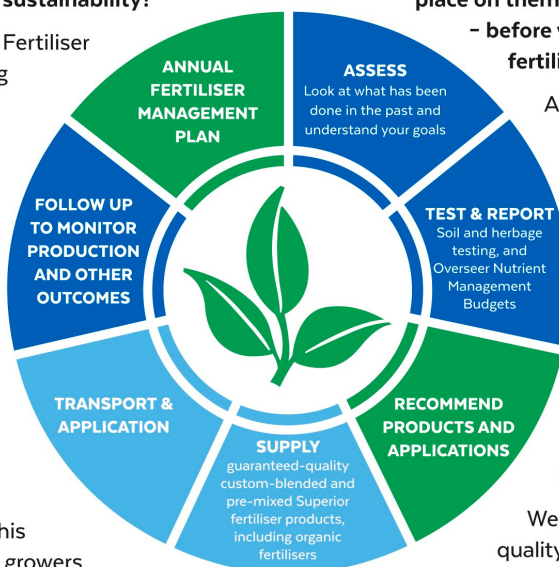
Tim is a key member of the highly skilled Superior team totally committed to helping you develop healthier, more productive soils and plants.

We form a specialist fertiliser company that provides high quality advice and products at competitive prices. We have been doing this for South Island farmers and growers for just on 20 years.

Superior promotes a total soil care package. First, we get to understand the make-up, nutrient status and health of your soils, the demands you are going to place on them, and your production goals – before we apply one kilogram of fertiliser.

A comprehensive regime of vigorous soil tests will be undertaken and the results will provide the basis of a Superior Fertiliser Management Plan customised for your unique situation. This will complement your farm's Environmental Plan and provide the blueprint for an ongoing annual fertiliser programme.

We then supply guaranteed-quality solid fertiliser for your pasture and crops, monitor production and other outcomes, and update your Plans as required.



It's free to talk so don't hesitate to give Tim a call.  
Phone 021 418 224



**Tim Adcock**  
Fertiliser Advisor  
Otago/Southland  
021 418 224  
tim@superior.net.nz

 FERTILISER SPECIALISTS  
**SUPERIOR**  
[www.superior.net.nz](http://www.superior.net.nz)



# TUATAPERE SERVICE STATION

20 ORAWIA ROAD

PHONE: 03 2266475

## WHITEBAITERS

We still have plenty of nets in stock along with  
Netting, waders, screens pulleys etc

## FOR ALL YOUR MECHANICAL NEEDS

Car & 4WD WOF's

Trailer, Caravan & Motor bike WOF's

Servicing all vehicles

Light Engineering

New Tyres

Electrical Work

Scanning of most vehicles



## HARDWARE WE STOCK

METRIC BOLTS & NUTS

IMPERIAL NUTS & BOLTS

GUTTER BOLTS

DYNA BOLTS

COACH BOLTS

TEK SCREWS

WOOD SCREWS

SELF TAPPING SCREWS

HINGES, BRACKETS, CATCHES



NZ TRANSPORT AGENCY  
WAKA KOTAHI

## WE CAN PROCESS ALL YOUR

**REGISTRATIONS**

**ROAD USER CHARGES**

**CHANGE OF OWNERSHIPS**

**VEHICLE EXEMPTIONS**

**CANCELATION OF REGISTRATION**

**CHANGE OF HUBOMETERS**

