



# WESTERN Wanderer

Tuatapere | Clifden | Orawia | Blackmount | Monowai | Colac Bay | Orepuki

Cover Photo Credit: Kelie Grantham - Winter Sunset, Tuatapere

Issue 236

At a glance ... what events are on this month? **AUGUST 2021**

MONDAY	TUESDAY	WEDNESDAY	THURSDAY	FRIDAY	SATURDAY	SUNDAY
						1 WTCC Working Bee 10am BBQ after  FREE Nature Workshop 2pm Tennis Courts
2 Emergency Management Southland Civil Defence Team Talks Tsunamis 7pm WTCC	3	4	5 Waiau Area School Teacher Only Day	6	7	8
9	10	11	12 Cancer Society Quiz Night Tui Base Camp 7:30pm Plexus Opportunity Tour FREE Event WTCC 7:30pm - 8:30pm	13 Club Champs Waiau Squash Club	14 Wild Food Event 4pm WTCC Everyone welcome!	15
16 Waiau Area School Teacher Only Day	17	18 Tuatapere & Districts Promotions Inc Committee Meeting 7pm WTCC	19 Cancer Society Quiz Night Orepuki Tavern 7:30pm Soup & Chat Tui Base Camp 11am	20 Notices, events, adverts etc in to the WW for the September Issue	21	22
23 Tuatapere Community Medical Services Trust & Waiau Health Trust AGM - 7pm Day Activities Room	24	25 Tuatapere Support Worker Community Trust AGM 7pm Day Room Tuatapere Medical Centre	26 Mums & Bubs Guest Speaker: John Parsons Tuatapere Plunket Rooms - 1pm All welcome!	27 Cancer Society Daffodil Day Outside 4Square 10am	28 Dessert Evening WTCC 7pm Bookings Essential	29
30	31	1 Random Acts of Kindness Day	2	3	4 Tui Base Camp 2 year Anniversary! Live Band Justin Funk Monkey	5 Father's Day

Special thanks to



for their support with the printing

**SEE INSIDE FOR MORE DETAILS!**  
Want your event here? Let us know at  
**yourwesternwanderer@gmail.com**

## HANDY PHONE NUMBERS

### EMERGENCY

POLICE / FIRE / AMBULANCE: **111**

MEDICAL CENTRE: (03) 2266 123

TUATAPERE POLICE STATION:  
(03) 2269 020

TUATAPERE COMMUNITY WORKER:  
027 757 5983

HAUROKO VALLEY SCHOOL OFFICE:  
(03) 2266 753

WAI AU AREA SCHOOL OFFICE:  
(03) 2266 285

TUATAPERE CEMETERY TRUST:  
(03) 2266 065

CHAMBERS SERVICE STATION:  
(03) 2266 654

TUATAPERE SERVICE STATION:  
(03) 2266 475

TUATAPERE FOUR SQUARE:  
(03) 2266 898

TUATAPERE OUTDOORS & HARDWARE:  
(03) 2266 363



## Tuatapere & Districts Promotions Inc

*Paula McKenzie, President*

On the 23 June we held our AGM at the Waiau Town and Country Club. Our committee positions remain unchanged for another year.

When thinking about writing my report for the AGM, I was feeling a little disheartened as I felt that we hadn't achieved much - but when I started reviewing the past year, I realised that we have actually ticked off quite a few items. Here are some of our highlights for the 2020-2021 year:

**The Western Wanderer** now lands in everyone's mailbox during the first week of the month. We have protocols in place for our contributors and advertisers and our circulation stands at 830 issues each month. A huge thank you to Myles Greber for hosting the online version of the WW on the On Natures Edge website.

**Sausage Sign:** At last our beloved Sausage Sign has been updated and we've had plenty of positive feedback. It was a long journey but we got there in the end. Thanks once again to the Amenities Trust for granting us \$4000 towards this project.

**Events Sign:** We were successful in obtaining funding from Meridian for our Events sign and it was installed towards the end of 2020. Thank you to Ron Hibbs for the time and effort you put into putting this application together for us. We now have protocols in place to help assist the volunteers who manage the sign displays. Thank you Nathalie for being our sign manager until recently - and thank you to Christine Egerton who is our current sign manager.

**Community Flagtrax:** We were kindly granted \$20,000 from the SDC and The Community Partnership Fund for the Flagtrax project. This enabled us to get the trax up in time to fly Christmas Flags. We have several different sets so far, with more in the planning stages to rotate on a regular basis. The Event flags that we purchased have flown on several occasions including Sports Day and The Waiau A&P Show.

**Community Christmas Tree:** Local carpenter John Timpany donated his time to build this tree and Tui Base Camp let us use their power over the time the tree was on display. Thanks Gary Templeton for giving space to store the tree when not in use.




## QUIZ NIGHTS

**Thursday 12th August**

**Tui Base Camp  
7:30pm**

**Thursday 19th August**

**Orepuki Tavern  
7:30pm**

ALL PROCEEDS GO TO  **Cancer Society**

**Daffodil  
Street Day**

**Friday, 27 August  
10am**

Outside 4 Square

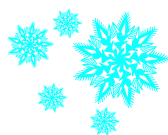
Contact Isobel Green (03) 226 6065





# Mid-Winter Muster Delights!

Tuatapere & Districts Promotions Inc Committee



The idea behind our community pot-luck dinner was to encourage anyone, both new & not so new to the community, to come together for a meal and a catch-up. It was awesome to see familiar faces and some new faces!

With lights in the trees outside, and lights decorating the space, the tables laden with delectable delights awaited everyone. From smoked trout, to green curries, chicken pieces, mussels, potato bake, vegetable lasagne and so much more - the aroma alone was enough to get everyone's taste-buds watering! The dessert dishes were stunning too!

We had 4 amazing entries for the Winter Wonderland cake decorating competition - well done everyone - they were all spectacular and the judges had a tough job deciding a winner! Congratulations Matt McLennan - the muddy winter farming scene won the judges over!

A huge thank you to the WTCC for helping us host the pot-luck dinner and for helping us to organise a clue-fest activity for all the kids to participate in - it was a LOT of fun figuring out where the next clue was to be found.

Did you miss this event? Don't worry - it was such fun and so delicious that we're going to do it again next year and make it an annual event. Thank you everyone for coming out and making our first ever Mid-Winter Muster a success!



## COMMUNITY NOTICES & EVENTS

### SAVE THE DATE!



**Sunday 17 October 2021**

**10:30am start**

**5-16 year old age groups, open and pre-school  
Individual or Team entries**

**Prize to the school with the most entries!**

**at the Tuatapere Community Pool  
Orawia Rd, TUATAPERE**



For more information check out our facebook page **OUT WEST TUI TRYathlon**, email [OutWestTuiTryathlon@gmail.com](mailto:OutWestTuiTryathlon@gmail.com) or call in to the Tuatapere4Square to pick up an entry form and information.

Tuatapere Community Pool Fundraiser

## THE IMPACT TECHNOLOGY CAN HAVE ON The First 1000 Days & Beyond..

**Presented by John Parsons**

John will take you on a journey, looking at the potential impact of ICT on children ages 0 to 5 and beyond moving towards the teenage years.

It is vital that children are allowed to be children and progress within a therapeutic and positive environment towards early adolescence and beyond.

The workshop identifies appropriate screen time use from 0 to 5 and how to create a family space that is sensitive to a child's needs in early childhood.

A key focus in the workshop is teaching adults how to safeguard children online and offline.

**DATE:**  
Thursday 26 AUGUST

**1pm - 3pm**

**FREE OF CHARGE**

**@ Tuatapere Plunket**  
48 Main Road,  
Tuatapere

**Topics covered included:**

- Screen time
- The importance of sleep
- The importance of movement
- Identifies protective factors for parents and children

Proudly supported by:

Rotary CYBER EQ-HQ PROJECT with John Parsons

For more information please contact  
Tuatapere Parents Group on [NDVanveen@hotmail.com](mailto:NDVanveen@hotmail.com)

**Southern REAP Inc**

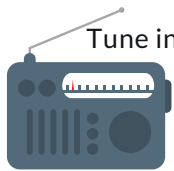


RURAL EDUCATION

WWW.REAP.CO.NZ

**Get your car washed, dried and windows  
cleaned - Price arranged on request!**

Contact: Rex Hibbs  
Flat 1/26 Orawia Rd, Tuatapere



Tune into Tuatapere's very own Radio Station

**88.2 FM - Tui FM!**

Hits of the 80's & 90's and  
today's current music!

## COMMUNITY NOTICEBOARD

### THANK YOU TO OUR COMMUNITY

During this time of heart break and sadness, it has made our family believe in the true meaning of community.

We would like to use this platform to say sincerely "Thank You" for your generosity, togetherness and love during this process.

The outpouring of assistance from people far and wide, in person, messages or calls has shown how special our little slice of the world is and how in a time of grief we all become one to make the passing just that little bit easier.

Just as Curly's love laughter and support will never be forgotten, neither will yours.

Forever grateful,

Bex, Aidan, Rocco and our family

### AGM FOR TUATAPERE COMMUNITY MEDICAL SERVICES TRUST AND WAIU HEALTH TRUST LTD

The Annual General Meetings will be held on **Monday 23rd August 2021 at 7:00pm** for Tuatapere Community Medical Services Trust followed by Waiau Health Trust, at the Day Activities Room, Maternity Hospital 69a Orawia Road Tuatapere.

**Trustee nominations** are invited for the Tuatapere Community Medical Services Trust. Please apply in writing by 13th August 2021 to PO Box 10, Tuatapere 9642 or email to [kristy@tuataperemedical.co.nz](mailto:kristy@tuataperemedical.co.nz)

### TUATAPERE COMMUNITY GARDEN

We will be getting over winter soon and it will be time to have a tidy up in our garden. We would like to see some more helpers as we don't want to see our garden close like Otautau.

We would like to thank Quinton for mowing and Russell Bennett for cutting our hedge.

4 See you in the sun at our community garden!

### SALVATION ARMY FAMILY STORE TRUCK

The Salvation Army Family Store Truck will come out and collect large amounts of your pre-loved furniture & other household items. This service is free.

Please call the store to organise your visit on **03 214 5380**



**Family Store**

Donate. Buy. Help.



[familystore.org.nz](http://familystore.org.nz)

### TUATAPERE HEALTH & GIFT SHOP - Riverton Pharmacy

We now have two courier drops for prescriptions for our Tuatapere customers:

**1:00pm and 4:45pm.**

The Health & Gift Shop is open from 12:30pm - 5:30pm.

If we can help in any other way, please contact Riverton Pharmacy **(03) 234 8515**



### COUNTRY CORNER CRAFTS

Come in and browse and see what we have to offer. Hats, scarves, children's knitwear, cards, jewellery, woodware, sewing, jams, pickles, sauces, etc.

Tuatapere souvenirs "On Natures Edge" logo are always available.

Is anyone interested in joining to sell their crafts? You are more than welcome to contact us.

Want to volunteer your time & work in the Craft Centre - let us know! It's a great way to meet people! If you wish to view the shop and it is closed, please ring the ladies below to open it for you.

**Louise Greber (03) 668 6001 or  
Lyla Sherriff (03) 226 6187**





## WE'RE LOOKING FOR LOCAL CONTRIBUTORS!



Are you interested in being a regular or semi-regular contributor of content for the Western Wanderer? We're looking for people who would like to provide a short article/piece of reading for each monthly issue. (It doesn't have to be every month - we can be flexible!) Email us at [yourwesternwanderer@gmail.com](mailto:yourwesternwanderer@gmail.com) or drop a note in the mailbox at 18 Orawia Rd, Tuatapere.

## TUATAPERE COMMUNITY SUPPORT WORKER TRUST AGM

25th August 2021 at 7pm

The Day Room, Tuatapere Medical Centre.  
ALL WELCOME

Keri Potter  
Phone: 0277 575 983  
Medical Centre Room 5 / 69A Orawia Road  
Tuatapere 9620



## SPREADING THE GOSPEL MESSAGE

Our names are Rhonda Gibson and Desirée Watchorn. We are living and working in the wider Southland community during 2021.

We share the Gospel message at various locations around Southland each week - currently in Gore and Invercargill. These meetings are open to the entire community.

If you prefer, we could meet you somewhere that suits you better.

We only use The Bible as our reference. Free of charge.  
Phone or message 027 5727 468 or 022 6485 987



## SOUTHLAND COMMUNITY LAW CENTRE

Free legal information and advice for the community of Southland.

2nd Floor, Cue Building, 33 Don Street, Invercargill

Phone (03) 214 3180

Freephone: 0800 550 800 (outside Invercargill city only)



## NEED A JP?



The following Justices are available by appointment:

### Tuatapere

Keri Potter 027 526 3137  
Donald Egerton 027 432 5407

### Te Waewae Bay

Shirley Whyte 027 504 5220

### Blackmount

Nicky Baker 0276435880

## WESTERN SOUTHLAND WOOLCRAFT GROUP

Spinning, Felt, Weaving, Knitting, Crochet. Other crafts welcome!  
1st Wednesday of the month.  
10am - 3pm. BYO Lunch.  
For details please contact:  
Helen Todd 022 378 9743



## TUATAPERE & DISTRICTS LIONS CLUB PROJECT



### SUPER DIRT

Super dirt bags are now weighed so more in each bag!  
**\$8 per bag - ready for your garden!**

Super dirt can be collected from: Cracks Yard, Grove Burn Road, in the mornings Monday to Friday. Weekends by arrangement.

Delivery by arrangement - (but not guaranteed)

Phone Trevor (03) 225 5864 or  
Stephen (03) 226 6817



## TUATAPERE COMMUNITY WORKER

Room 5 Medical Centre  
69A Orawia Road

Monday - Thursday 10am to 3pm

Keri Potter 027 757 5983

Email: [tcworker@xtra.co.nz](mailto:tcworker@xtra.co.nz)





## WAI AU MEMORIAL LIBRARY

### Library Hours: Fridays

10:00am - 11:30am

2:30pm - 4:00pm

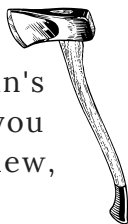
7:00pm - 8:00pm



The Library now has Wi-Fi. Available free to all library members. Just ask one of our friendly volunteers to help you set up your device.

## TUATAPERE BUSHMAN'S MUSEUM

Orawia Road. If the Bushman's Museum is not open when you have visitors who wish to view, you can contact:  
Lindsay Faulkner (03) 226 6650 to arrange a suitable time.



## TUATAPERE ENVELOPES

Envelopes printed with the "Tuatapere on Nature's Edge"

Logo can be purchased at Country Corner Craft Shop  
1A Orawia Road

Cost \$3.00 per 10



## TUATAPERE MAINLY MUSIC

A pre-school music and movement-based playgroup.

Mondays during the school term at the Tuatapere Presbyterian Church Hall.

Music session starts at 10am followed by a time of morning tea and play. \$2 per family.

Morning tea is provided for all.

New families welcome!

Find us on Facebook:

"Tuatapere Mainly Music"

mainly music



For more information contact Heidi 022 315 3326

## COMMUNITY NOTICEBOARD

### SOUP & CHAT (FREE)



Thursday 19 August at Tui Base Camp. 11am to 12:30pm

See you there! Book (for catering purposes) by calling Keri Potter 027 757 5983

### TARGET SHOOTING SOUTHLAND



Have you thought of small bore rifle shooting which is known in Southland as target shooting?

Nightcaps meet on a Monday night.

Contact: Raeleen Sinclair (03) 225 7834

Tuatapere meet on a Wednesday night.

Contact: Kevin Daly (03) 234 5162 or

Quinton Erskine (03) 226 6969

<https://www.sporty.co.nz/targetshootingsouthland>

### TUATAPERE SCOUTS



Are you and your family looking for something that will foster personal development, create a sense of community and at the same time challenge you or a school age member of your family?

Have you thought of joining Scouts?

At Scouts we have Kea's for children aged 5-7 yrs, Cubs for children aged 7- 9 1/2, Scouts for 9 1/2 -15 yrs.

We also have a need for leaders so we can deliver our programmes effectively. Please contact:

Leader Anne-Marie 027 688 5828

Group Leader Quinton 027 223 4842 or (03) 226 6969

### TUATAPERE PLAYGROUP

23B Orawia Road. Friday Playgroup 9am - 12pm

All parents and children welcome!

Children's morning tea is a packed lunchbox from home at Playgroup (as opposed to a shared morning tea).

Any queries please contact:

Gemma Bennett 022 040 3368 Alice Harris 027 270 0363

### CLIFDEN PLAYGROUP

45 Otahu Eastern Bush Road.

Every Wednesday (during School Term) 9:30am - 12:30pm.

All mothers and children welcome.

Bring packed lunchbox for your child's morning tea.

Any queries to: Sarah 027 699 5234

## TUATAPERE TOY LIBRARY

Tuatapere Toy Library has been a toy swap/hire service provided to the young families of Tuatapere and surrounding since 1989. The purpose is to create opportunities for the little people of our community to have accessibility to toys. A small contribution of an annual membership allows families to join the group and have access to the toys.

For more information or questions please text or ring Nathalie Pahl on **027 4759 075**



## WAI AU SQUASH CLUB

Squash is a great way to get a bit of exercise over the winter months, have some fun and meet some new people. Women's Interclub - Tuesday evening. Men's Interclub - Thursday evening.

For more info please contact:  
Nic Mitchell **021 815 531** or  
Sam Egerton **027 2505 477**



## SENIOR CITIZENS

Senior Citizens is a group of over 60s that meet every **Friday afternoon at 1pm** at the rooms behind the RSA Hall.

We are always looking for new members so if you would like a fun afternoon playing bowls, cards or just catching up with friends, come and join the group.

Contact: Olive Bennett Ph **(03) 2266 477**

## WAI AU VALLEY PRESBYTERIAN CHURCH

Services for all ages! Every Sunday at 10.30am. Tuatapere Presbyterian Church, Main Street, Tuatapere. All welcome to join us.

For information please contact:  
Chris Howden Session Clerk 021 477 999

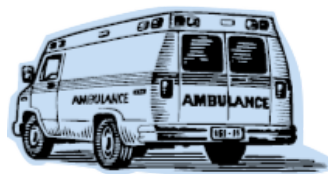
## TUATAPERE AMBULANCE

### Did YOU Know?

The Tuatapere Ambulance is a funded service by the Tuatapere Lions Club, for the residents of Tuatapere & Districts.

Should you receive an account for this service from St John, please forward it immediately to:

**The Treasurer  
Tuatapere Lions Club  
PO Box 47  
Tuatapere**



Sometimes we experience difficulty in receiving the invoices for YOUR trip - so PLEASE do forward them on to us.

Thank you!

**Tuatapere Lions Club Charitable Trust  
Ambulance Committee**

## WESTERN SOUTHLAND HEALTH SHUTTLE

The Western Southland Health Shuttle Service travels from Otautau, Ohai, Nightcaps, Tuatapere, Riverton - covering all of Western Southland. We also connect with the Invercargill-Dunedin shuttle.

The Western Southland Health Shuttle operates Monday - Friday (excluding Public Holidays).

Bookings are required by 3pm the day prior to transport.

**Ph: 0800 103 046 to book.**

Please book as soon as you receive your appointment.

## TUATAPERE VOLUNTEER FIRE BRIGADE

We're on the lookout for members to join this rewarding organization. We are looking for persons who are, ideally, available throughout the day.

If you think that you would like to try this (sometimes lifelong) commitment, then please feel free to come and try it!

We train on Tuesday nights at 7:30pm during daylight saving and 7pm through the winter months.

We look forward to meeting with you.



# Cancer Society Daffodil Day

Isobel Green, Area Coordinator

Please support this year's Cancer Society Daffodil Day.



I will be doing a fresh daffodil run around usual buyers, but if you would like to order some - **\$20 for 20 fresh daffodils**  
Please give me a ring at **03 226 6065** before 5 August.

We will be holding our two Quiz Nights in August.

Tui Base Camp - **Thursday 12 August 7:30pm**

Orepuki Tavern - **Thursday 19 August 7:30pm**

*A prize for the raffles table would be much appreciated!*

Our Street Day will be held outside Tuatapere 4 Square on **Friday 27 August - 10am onwards**

There will be raffles and produce for sale.



## Tuatapere Freight

LOCALLY OWNED & OPERATED

RUNS MONDAY TO FRIDAY  
WEEKENDS BY ARRANGEMENT

**Phone Brandon**

**027 436 4360**



**JOHN TIMPANY** Craftsman

022 046 1402

7 Settlement Road  
Papatotara  
Tuatapere, Southland

Furniture  
Native Timber & Timeless Design  
Signs Carved & Shapes Shaped  
Small Structures Erected

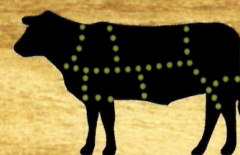


**Wayne & Rachel Saunders**  
Qualified Butcher

**027 457 6350**

[rawfarming@yahoo.co.nz](mailto:rawfarming@yahoo.co.nz)

82 Clifden Highway  
Tuatapere



Cut up the way you want  
Beef  
Pork  
Sheep  
Venison  
Other game meats  
Traditional Smallgoods



**Tremendous Changes (continued from last issue ....)**

John Davies, the Welshman who established the picture theatre in Tuatapere came to the hole in the bush as early as 1908 and he too has flourished along with the others. The only road, when he arrived, was a mere track through the bush and he can show photographs of the township with surveyors' camps and old shacks standing on sites that are now the main street today. The bush crowded in everywhere and seemed to resist all efforts to drive it back.

It was not surprising, of course, that Tuatapere became famous for its woodchopping events at its annual sports meeting and John Davies actually also organised indoor chopping events. Men whose names became household words competed in the bushcraft events at Tuatapere; men like Jack Pont, Martin Cash, Bill Johnstone, Jack Breen and others. John Davies started with a small shop and billiard saloon and gradually built up a substantial business centred in the Cymric Hall; a Welsh name, of course, with the 'C' pronounced hard, as in 'Cash'; and cash was what came rolling in through the ticket box of his picture theatre. John Davies is a man of many interests, one of which is writing letters to the newspapers and acting generally as a literary gadfly, particularly on "fire brigade matters."

---

*FWG Miller, historian and journalist with Southland Daily News, in an article published on October 27th, 1956, continues to communicate local history on the occasion of Southland's centenary.*

**Story of Papatotara**

"Always there was the bush; great trees that covered the hills and valleys stretching away for miles right up to the snowline on the Princess Mountains and, where there was not bush, there was swamp. These were the two great handicaps that faced the Papatotara settlers when they took up the land on the western bank of the Waiau in the 1880s. Chief among these settlers was a man who was to do much in the shaping of the district and the township of Tuatapere that was to spring up years afterwards. Hugh Erskine came out by himself from Northern Ireland in 1884 and then sent for his wife and family, who came out the following year. Hugh Erskine was, indeed, a man among men. He started with a bush run to the west of the Waiau and later this was repossessed by the government and Erskine was granted his pre-emptive of 600 acres. There were objections to this and the farm was reduced by half while the remainder was put up for ballot among the objectors, who had claims that too much of the best land was being allotted to one man. Erskine was also permitted to take part in the ballot and, since he drew the winning marble, he was able to resume where he left off and the voice of the critics was stilled."

# Shearing

magazine

**Des Williams (editor)**

Tel 07 839 2891 : Mob 0274 833 465

Email : [shearingmag@xtra.co.nz](mailto:shearingmag@xtra.co.nz)

Member NZ Guild of Agricultural Journalists and Communicators (Inc)

**LAST SIDE PUBLISHING LTD**

PO Box 102, Hamilton 3240, New Zealand

## Shirley Whyte

Your local real estate specialist living & working in Western Southland  
now also an Accredited Justice of the Peace.



for:

Friendly service, reliability, sound local knowledge  
in Western Southland, Te Anau & Stewart Island

All enquires welcome - all calls answered

**Harcourts**



Holmwood Real Estate Ltd Licensed Agent REAA 2008

M 027 504 52200 O 03 214 4080

E [shirley@harcourtsinv.co.nz](mailto:shirley@harcourtsinv.co.nz)

W [www.harcourts.co.nz](http://www.harcourts.co.nz)

### Sewing and Mending Services Available

Experienced machinist offering fast, reliable service with very reasonable rates.

I will mend/make anything from zip replacements to curtain making - just ask!

Free quotes and pick-up delivery service within Tuatapere.



Contact **Deborah**

(03) 226 6783 or 021 0305 667



## TUATAPERE HANDYMAN SERVICES

**Barry Bennett**  
**(03) 226 6730**

- **Painting - Interior/Exterior**
- **Waterblasting**
- **Carpet & Upholstery Cleaning**
- **Spider & Fly Spraying**
- **General Repair Work**
- **Lawnmowing**
- **Hedge Trimming**
- **Weeding**



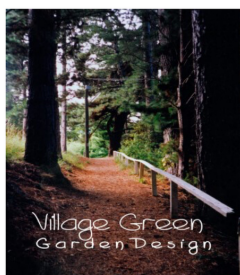
# Landscape Garden Design

What do you want  
from your garden?

Whether building new or  
revamping your existing garden  
an overall plan is essential.

Free Initial Site Visit

From a few questions to get  
you started, to a full landscape design.



Village Green  
Garden Design  
Tuatapere

Ph Robert  
027 9241 204

**YOUR BUSINESS CARD  
COULD BE HERE!**

**CONTACT**

**[yourwesternwanderer@gmail.com](mailto:yourwesternwanderer@gmail.com)**

**FOR PRICING/DETAILS**



We specialise in:

**Resource consents**

**Farm environmental plans**

**Policy advice**

**DOC concessions**

**Landscape plans & assessment**

We take care of the paperwork,  
so you can do what you do best!

Sonya: 027 5050 077

Rebecca: 027 4246 129

[www.slwp.co.nz](http://www.slwp.co.nz)

Locally owned & operated

## SPECIAL FEATURE

Edith Elsie Miller sadly passed away peacefully on Wednesday, June 23, 2021, in her 104th year. A kind reader sent in the poem Edith wrote to celebrate Tuatapere's 100th year milestone.

We would like to share that poem with you all.



## Tuatapere's Greatest Milestone

**Edith E Miller**

*Tuatapere celebrates its first one hundred years  
So lift your glass and have a drink, remember to say "cheers"  
Built on solid rock foundation by pioneers who passed this way  
It came from little hole in bush to what it is today  
The story of this little place is full of ups and downs  
Who should have the accolades and who should wear the crowns  
The Railway and the Saw Mills I think will pass the test  
To bring us all prosperity they truly did their best*

*The Railway now has done its dash, it helped us on the way  
We have still got a Water Tank and Station here to stay  
One thing we remember is good old Railway Row  
Jacksons, Baldwins, Tanners all made the whistle blow  
We had sawmills up the Alton, the Groveburn and the beach  
One tucked in behind the town, with Happy Valley still in reach  
Dean Forest was community with sawmill all its own  
Then Dixon joined with Evans and now in our Town has grown*

*Although we're miles from anywhere, we're never short of beer  
There's doctors, nurses, ambulance, that seem to be right here  
We've had visits from the dentist, the physio came too  
The lawyers and accountants all proved what they can do  
We used to have a traffic cop who popped in now and again  
But now they seem to live here and they don't tell 'when'  
Tuatapere has been moulded by four great 'Copper' men  
McCulloch, Skippy, Hibbs and Tong, but I've lost track since then*

*It was Dr Gillies, Dr Dodds, then Dr Elder held the fort  
He tended us for 50 years, he called at every port  
Danie and then Clem were next, we bid them fond farewell  
Now they seem to come and go, but Sue, you beat the bell  
We've had many nurses, and many midwives too  
But note that was more versatile than Bev Pratt was with you  
The Trust has been tremendous, we give thanks for their care  
Jack Munro was good Samaritan, no better anywhere*

*McClymont was the chemist, with his shop beside the Bank  
Then he moved to the shoe shop before John Fraser said 'I thank'  
John later build his own shop, now it's so full of gifts*

While he is now in Riverton, prescriptions he still sifts  
 We recognise the Councillors, Steve was before our Jack  
 Then Thwaites and Ashcroft had a go, before Anne had a crack  
 Now George is quite a Harpur, so I guess he'll get things done  
 Promotions could be going Gray, but Ngarita holds the gun.

Hinchcliff had the Bakery till Don and George came down  
 Then they supplied the daily bread and sold pies round the town  
 They seemed to know the adjectives that fitted with each noun  
 Had the Bakery been a Kingdom they would both have worn  
 a crown

McLeod Bros. owned the Tearooms, and Eva did her best  
 To keep them running smoothly until Blossom passed the test  
 That little kitchen out the back, was quite a meeting place  
 So many hearts were lost or won if they couldn't make the pace

The first Pub that was in the town was by river way out 'West'  
 Then they built a new one and put it to the test  
 The first time I was in this Pub, Bruce Brooks was not here long  
 Skippy bet us he wouldn't shout, Johnnie Walker proved him wrong  
 Next the Pub was full of LOVE Bill shouted night and day  
 Then George Harpur took it on before Pam and Dave McNay  
 Quinton Donnelly is the new man, I haven't met him yet  
 But Quinton I must warn you Skippy's not here now to bet

Charlton sold to Cameron and Finn, who with Langmuirs made  
 a pair

'Til Ivan Bocket was so smart, and opened up Four Square  
 Murry Dowling beats them all, Motels, Backpackers too  
 Supermarket Restaurant, what a BAA for you  
 The Sausage Capital of the town, has had a real sex change  
 Prendiville, Brown and Henderson, leave the girls to re-arrange  
 The Dairy too has filled the bill, I go back to Mrs Dewe  
 Then Lex and Betty had a swing, now others follow through

Andy Hughes did sell the shoes, and Cecil was a Payne  
 But if you needed shoes on horse, call Charlie Chamberlain  
 Dave Jenkins told the stories, we laughed until we cried  
 But he just went on telling them until the day he died  
 There wer Egertons a plenty with or without the D  
 I'm told it was the state of mind when Dad went to registry  
 And what about our dear old Len, who opened a Café  
 He used to sell the coffee but he gave the gas away

The National Bank did serve us well until it all closed down  
 But Wayne has brought it back to life, and brightened up the town  
 Let us now give thanks to Shaun, for the murals he did paint  
 To celebrate the Hump Ridge Track, he really was a saint  
 The glory and the wonder where the Waiau meets the sea  
 The whitebait and the flounders take a look at what they see  
 There were Hamiltons, McKenzies, Howdens, Ridders and  
 Bennetts who  
 Knew the Erskines and the Normans and the Baker family too

**FREE  
event**

plexus

## Opportunity TOUR



**12 August, 2021  
Tuatapere, NZ  
7:30pm - 8:30pm**

Healthy living has never been easier or more rewarding! Join us for this Plexus Opportunity event to find out how to take back control of your Health & Happiness & build your own business.

**Scan the QR code to register today!**



**Heidi Berkelaar**  
Host  
Gold Ambassador





**Trish Waipouri**  
Gold Ambassador

Location: Waiau Town & Country Club, 41 King Street, Tuatapere 9620, New Zealand

## Painting & Handyman Services

### Experienced Painter

I can help with all sorts of odd jobs too!

- Gardening
- Lawn mowing
- Tree & Hedge Trimming
- General labouring

Phone **Luke Wikstrom 027 2773 925**



## TUATAPERE OUTDOORS & HARDWARE

For all your

Gardening tools, lawn care, garden hoses, insect and disease sprays, potting and compost.

We have those building requirements for that weekend job with a good selection of silicone, nails, screws and bolts.


New fishing rods and reels, fishing lures, good selection of soft bait, fishing nets, flounder and eel nets.

Good selection of giftware.

Come in, check out what we have.

**Contact:**

Judy **027 225 8192**  
 Paul **027 890 3602**  
 Shop **(03) 226 6363**





# WESTERN ELECTRICAL

2008 LTD

Electrical Solutions

Domestic | Industrial | Commercial

**Quality Service at Competitive Prices**

- New Builds, Rewiring & Alterations
- Dairy Shed, Farm & Industrial Maintenance
- Hotwater Element Replacement
- A/H Call Out Service Provided



**Ph 03 225 8974 / 027 439 3787**

**Fax 03 225 8973**

## MOUNTAINS EDGE CABINS MONOWAI



Hunting, Fishing, Mountain Biking,  
Kayaking & Tramping  
Cabin Accommodation

12 Cabins  
Double and Single Available  
\$35.00 per person per night

Eftpos available

Full Kitchen Facilities, Showers, Toilets, Playground  
& the Tennis Courts right across the road!

We are 'pet friendly'

[www.mountainsedgecabins.com](http://www.mountainsedgecabins.com)  
Email: [mountainsedgecabins@gmail.com](mailto:mountainsedgecabins@gmail.com)

75 Turbine Drive, Monowai. Ph. 03 225 8267

*Tuatapere's Greatest Milestone continued ...*

*Tuatapere was saddened to lose the Office of the Post  
But Crafties opened up their shop and compete to sell the most  
We've had Postmasters & Posties, Elaine stood the test of time  
The exchange controlled by Elwyn, Hold, I'll put you on the line  
We had buses for the people, Dick Ritchie took the coast  
Reg and then Bill Evans, "In the NEWS", were right on toast  
Of Stock agents there were many, Dick Smith could take a bow  
For while the others moved away, Dick stayed on somehow*

*Jack Mangan "Ping the Painter", Keith would do his best  
But Charlie Jackson was the one who put them through the test  
Then we had Bob the Builder, when a Sherriff he was not  
And Stacey was a Walker, so he built up quite a plot  
The Evans boys were builders and one was quite a Dick  
Syd Buckfield used the mortar and West would lay the brick  
Bill Henderson and Robin, with Des would switch us on  
While Shepherd with his pipes for sheep would somehow tag  
along*

*Schools have chopped and changed a bit, now we have but one  
Many Schoolies too have passed this way, to them we say  
"Well done"*

*The Carriers were many Excell, Austin, Bennett, Ryley, King,  
McIntyre and Robins, Peek and Unahi did take and bring  
We're almost self sufficient, with many volunteers in the pack  
There was no room for hangers on when we built the Hump  
Ridge track*

*We've got Marshall's hydrangeas, almost given up the spuds  
The gentians are still blooming, but forget about the floods*

*We treasure now our library, it serves the community well  
It also is memorial to all the Servicemen who fell  
Tuatapere will remember the part those young men played  
And do the best to carry on in the footsteps that they laid  
We've had Stancomb's Garage, and Thomsons one, two, three  
Andersons and Chambers and Egertons without a D  
The Dairy Factory has all gone, no milk now in a pail  
It flows into a tanker, and ends up in Edendale*

*Les Brumby was the barber before Bill Rodger's day  
After having hair cut it was billiards you could play  
We've had an information centre they tell you all they know  
But there's toilets in the Main Street if you want to go  
The Jenkins had the milkcart and delivered 'round the town  
But Willie Winkie had the dunny cart & wore a "Nightie" gown  
We have our own fire engine and a mighty good Brigade  
The men are always ready and of great stuff they are made*

*A big event we have each year is the Waiau A & P Show  
The grand parade brought out the best, that's where the  
prizes go*

# WaterForce

**Irrigation Systems  
Pumping & Filtration  
Effluent Dispersal  
Water Management**

20 Winton Hedgehope Highway, Winton

03 236 9805 [www.waterforce.co.nz](http://www.waterforce.co.nz)

**0800 4 FORCE (4 36723)**

The Tuatapere Sports Meeting is held each New Year's Day  
 It draws the crowd and entertains in quite a different way  
 Remember man on tight rope, now the choppers imitate  
 They're riding on their high horse, and call everyone a mate  
 If the running and the cycling is not what it used to be  
 We'll always hear the shooters if the target they can't see

We've had net and basketball, tennis, rugby, cricket too  
 Squash and badminton and the baths are there for you  
 The Golf Club it was started, on top of Bob Scott's Hill  
 Now it's on Clifden Domain they chase the little pill  
 We've even got two bowling clubs, one is played inside  
 The Community Theatre entertains, the door is open wide  
 Remember when the Peace Bells rang, we danced around  
 the town  
 But what of the millennium, we watched the sun go down

The Tuatapere Pipe Band has a history all of its own  
 It warms the cockles of our heart, and steals our marrow bone  
 Sandy Robertson, Irwin Skioch and Donald Campbell who  
 Go back into its very roots, so I'll test your memory too  
 God bless them in the future, as at Waimatuku they grow  
 Can't beat McPherson tartan but Val let the Erskine flow  
 All credit now to Helen, who for fifty years has shown  
 Damsels how to Highland Fling like where the heather's grown

We've had many other bands, Reg and Roy leave memories here  
 And Diacks still have their band to get you into gear  
 Joe Lawson had the picture hall and drove cream lorry too  
 But John Davies was the one who built a cinema for you  
 Ron and Gwyn did play their part, the pictures they did run  
 While dad wrote to the paper and had a lot of fun  
 We've had many churches, and halls we've had galore  
 But now we have the Country Club it seems to be the core

The Bushmen have a museum, with a mural on the wall  
 Where you can view many things that helped them with  
 their haul

Let us show our gratitude to those who've passed away  
 And left behind a monument of all their work and play  
 Imelda edits, Barry pints the Wanderer just for you  
 And Daggy Dog is not content till he has his say too  
 I know we all enjoy a PUNT, and some just bridge the gap  
 But WAI AU river tried them all, now has it all on TAP

I'll simply have to finish, of this chaff you've been well fed  
 But I'll be there to celebrate, and paint the whole town red  
 We thank the main committee for all the work you've done  
 Sit back now, enjoy yourself, and have a lot of fun  
 Cherish all you have and hold, that money cannot buy  
 Never cease to enjoy the beauty of our land, our sea and sky  
 Standing tall with others, and always play the game  
 For Tuatapere has a heart, it's more than just a name



Image from: Wikimedia Commons



Image from: Wikimedia Commons



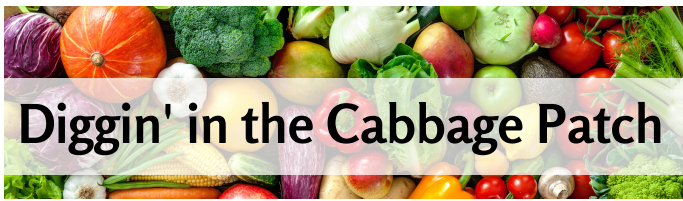
Image from: Wikimedia Commons

PLEASE HAVE YOUR  
 ARTICLES, NOTICES,  
 OR UPDATED ADVERTS FOR THE  
 WESTERN WANDERER  
 SENT IN BY

**20th of August**  
 (for September's Issue)

SEND TO  
[yourwesternwanderer@gmail.com](mailto:yourwesternwanderer@gmail.com)  
 OR  
 DROP A NOTE IN THE MAILBOX AT  
 18 Orawia Road, Tuatapere





## Diggin' in the Cabbage Patch

### Perfect time to ...

According to [tuigarden.co.nz](http://tuigarden.co.nz) there's still plenty to do in the garden! There's planning and prepping for spring to be done.

If you are wanting those delicious new potatoes for Christmas lunch - you need to start sprouting new season seed potatoes ready for planting in September. Same goes for strawberries - keep planting for a summer harvest!

Other vegetables to grow at this time are asparagus, beetroot, cabbage, cauliflower, kale, peas, radish, rocket, silverbeet and spinach.

### Top Tips for Growing Potatoes

- Buy your seed potatoes at least a month before planting, to enable them to sprout.
- Remove them from the bag and place in trays in a dry, airy spot away from direct sunlight, until sprouts are approximately 20-40mm long.
- If you are starting with an existing garden bed dig in organic matter like sheep pellets and compost to your soil.
- Make long furrows in the soil approximately 300mm apart for smaller varieties and 400mm apart for main crop and larger varieties.
- Place seed potatoes approximately 250mm apart in the furrows.
- Cover with up to 50mm of soil.
- Water your potatoes well.
- Continue mounding your potatoes until they are approximately 300mm tall. This protects them from wind and frost, prevents light reaching tubers and turning them green, and encourages tuber development.
- [tuigarden.co.nz](http://tuigarden.co.nz)'s top tip: Don't plant potatoes in the same place each year, and avoid planting them where tomatoes have been planted the previous season, to reduce the risk of spreading disease.

## Waiau Town & Country Club

**Meals (homemade goodness)  
available Thurs, Fri, Sat & Sun  
evenings from 4pm to 9pm.**

Family Friendly | Happy to cater for dietary requirements.  
Please pre-book for groups of 8 or more.

### Club Opening Hours:

**Mon - Thurs 4pm till close.**

**Fri 3pm - close.**

**Sat Noon - close.**

**Sun 3pm - close.**

**Book now for functions/birthdays etc**

We can cater! Just call Gary to discuss options.

**Gary - 03 226 6489**

## What's on at the Club:

**\*STEAK NIGHT** – every Thursday night  
only \$25 for a delicious steak meal.

**\*Wild Food Event** - Saturday 14th August  
Starts at 4pm, judging at 6pm.  
Everyone welcome to enter, bring along a wild wacky dish or just come along & taste.  
Chocolate Wheel & Bouncy Castle on the day.

**\*Dessert Evening** - Saturday 28th August  
7pm, \$25pp, bookings essential.

**\*Bouncy Castle** – is at the Club on  
Thurs, Fri, Sat & Sundays during July & August.

**\* MEMBERS DRAW & RAFFLES**  
drawn every Friday night! Approx. 7.30-8.30pm.

**Keep an eye on our Facebook Page for  
more details on upcoming events**

**Annual membership/subs due from 1 st July.**  
Annual membership is \$50 or \$30 for pensioners.  
Pay & collect at the club or pay online  
and we'll post your card out.  
Everyone welcome to become a member, just pop in  
or call the club.

Phone: **03 22 66 489** | Address: 41 King St Tuatapere  
Email: [waiautcc@gmail.com](mailto:waiautcc@gmail.com) | Facebook: [facebook.com/waiautcc](https://facebook.com/waiautcc)  
| Courtesy Van Available |

**We look forward to seeing you!**



# Southland Recreational Whitebaiters Assn

*Lynette Heath, Secretary/Treasurer*

The Annual meeting was held at the Invercargill Workingmens Club on Sunday 25 July. It was attended by 140 people including 2 DOC personnel. 22 People joined the Association for the first time. Mark Sutton from the Waiau Habitat Trust gave an informative talk on the work being carried out on the Waiau. Then Allan Christie and Sharon Trainor from DOC showed all present a You tube clip on the new Regulations and answered questions from those present. The You tube clip is very simple and informative to understand and you can access it by going onto You tube and search, **2021 Whitebaiting Regulations – Worth Knowin’**. A pamphlet also is being produced by DOC and they will let us know when it is available. If you have any questions beforehand just give DOC a phone call.

We are in the process of recruiting new members to the Association. There are over 660 stands registered with Environment Southland plus all the whitebaiters who fish without a stand. At present we have 116 members. By becoming a member for \$15 per year you will be kept up to date with what is happening on your river and nationally by way of newsletters. We have river representatives on the Titiroa, Maitara, Aparima, Oreti, Pourakino, Waikawa and Waiau. The Waiau Representatives are Kim Kollat and Ian McCracken. Feel free to contact them at anytime. Their names and phone numbers are included on the Newsletters. They also give reports on what is happening on their rivers they fish in the newsletters that I send out in September and October.

We have a membership renewal/new member form so please consider joining. You can pay directly into the bank account:

**SWRA 03 0960 0087393 00**

(Put your name as a reference and phone number)

or you can post it to:

**SWRA**

**PO Box 1508**

**Invercargill**

Lynette Heath (Secretary/Treasurer) **021 354 494**  
heathfam@outlook.co.nz

Roger McNaughton (President) **027 436 9510**

Graham Gough (Vice President) **027 437 2825**

## CHAINSAW SHARPENING

All chainsaw chain sizes precisely sharpened and rakers taken down accordingly, guaranteed results

**Chain only \$10 Taken Off & Refitted \$13**

Contact: **027 308 2501** (txt or phone)

## WANTED TO BUY

Possum Fur, Hard deer,  
Antler, Deer Velvet.

Phone Leith 027 496 3721

## DOG KENNEL FOR SALE

**New condition \$500**

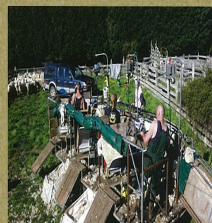
Phone Mossie (03) 226 6065



## DAGWOOD DAGGING

Available now to all new and existing  
customers for all your crutching  
requirements.

3 Stand or Single trailer available  
7 days a week, wet or dry.



No job too big or too small.

Competitive rates

**Jeff Chambers**

**027 3042 241**

For all your fencing requirements

**WESTERN FENCING**  
SHEEP | DAIRY | DEER



Call BEVAN 0277 413 213

ESSENTIAL OILS 100% PURE GIFTS OF NATURE  
Florals Trees Plants Herbs Spices Citrus

To Learn More, phone or text your local Wellness Advocate  
Carol Erskine Papatotara 0274 599 654





Whether it's for the juice, zest or slices, I love lemons and there are so many reasons why you should eat them. This is one of my all time favourite recipes using lemons.

## Lemon Tart

### Ingredients

- 400g sweet pastry
- 125g icing sugar
- 125g lemon juice
- 250g eggs (approximately 4)
- 175g cream
- Icing sugar, for dusting

### Method

Line a 20cm flan ring with pastry, leaving a good overlapping edge. Rest for 15 min in the fridge.

Preheat the oven to 200°C. Line the pastry with greaseproof paper and weigh it down with baking beans. Bake for 20 mins, then remove paper and beans and bake for another 5-10 mins, until golden brown. Turn the oven down to 100°C.

Mix icing sugar, lemon juice, eggs and cream together until smooth. Fill the flan base and bake until set (approximately 60 minutes). Allow to cool, then remove from the ring and dust with icing sugar.





# HARRY'S

## MACHINES

EARTHWORKS

027 304 3714




\* 13 Tonne Digger \* 5.5 Tonne Digger \* 2.7 Tonne Digger- dry hire or operated  
 \* Tip Truck \* Bob Cat \* Augers \* Post Driver \* Tree Saw & Hedge Trimmer

\* Tree Trimming \* Post Driving \* Fencing \* Cleaning of Wintering Sheds \* Site Clearance \* Cartage \* Graveling \* Lane Maintenance \* General Earthworks

For all enquiries and bookings please contact Lance or Alice Harris  
 Lance: 027 304 3714  
 Alice: 027 270 0363  
 Email: lanceharris533@gmail.com  
 Check us out on facebook- Harry's Machines



## BEN MCMASTER

### BUILDING


Ph: 027 202 7955  
benmcmaster@live.com

- Licensed Building Practitioner
- Sheds, renovations & new homes
- Based in Western Southland

*You dream it, we'll build it*

# WAIAU VALLEY

# SHEARING LTD



**Simon de Vries**

**Julie Heaps**

**027 840 9867**

**03 226 6212**





## Kia ora Western Wanderer Readers!

Another exciting moment for a select few of our Senior students attending Area School Nationals. This is where the students who were selected for various sports at Area Schools Tournament get to compete alongside other students from the Southern Zone (Maniototo, Roxburgh, Catlins, Lawrence and Twizel).



This year Nationals took place in Dunedin from Sunday the 18th July to Wednesday the 21st of July. Originally this tournament would have run in 2020 but due to Covid-19 was postponed until 2021. Having it hosted in your 'zone' meant we were the hosting region and along with our other Southern Area Schools we were responsible for organising and running the whole tournament ranging from fields, officials, welcoming ceremony, equipment and other logistics. Miss Quinn and Mr Bennett took on this responsibility for our school.

Waiau had **eight** students and **two** staff attend Nationals:

**Jack Richards** - played football and rugby and was also selected for the South Island rugby team.

**Natalie Logan** - played B Netball and Football making selection for South Island football.

**Malakai Mangion** - Malakai was a late call-up due to injuries from other schools and was selected to play football and volleyball. She was also selected for the South Island volleyball team.

**Jessica Wallis** - played football and was selected for the South Island football team.

**Josh Thomas** - played football

**Meadow Rodgers** - played B Netball, volleyball and played one game of football



**Bruin Roe** - played football and volleyball and was selected in both sports for the South Island teams, he also gained selection in the New Zealand Area Schools Volleyball team (this is an 'on-paper' team)

**Holly Hammond** - due to injury was unable to play in the tournament but was delegated the responsibility of Netball convener

**Mr Bennett** - coached boys and girls football

**Miss Quinn** - coached boys volleyball and managed B Netball and Ki o Rahi

For a reasonably small cohort of students we had many successes that the students, staff, parents and community can be proud of. This was the final tournament for Bruin and Holly who have been representing Waiau for several years in their respective sports. The memories, travel and friendships they have made will last them a lifetime.



2022's tournament will be held by Top of the North and is likely to be played in Whangarei.

A big thank you to our community for supporting the students fundraising as this comes as a large expense for families and WAS. Without your support we would not be able to attend such events.

**Nga mihi, take care and keep safe. Andrew PB**





**Rabco Ag Ltd** – 021 362 766 – [admin@rabco.nz](mailto:admin@rabco.nz)  
Agricultural Contracting Specialists - Western Southland



**Full silage  
& baling**



# WELCOME TO Tuatapere

If you are new to the district, the Tuatapere and Districts Promotions Group welcomes you! We hope you enjoy living in our community.

Here are some details that will help you find your way around our local services, including council, regulatory and community. However, if there is something else you need help with, please contact community worker **Keri Potter** on **027 757 5983**

If we have missed your sport, club or committee OR details have changed please let us know and we will add you!  
**EMAIL: [thisistuatapere@gmail.com](mailto:thisistuatapere@gmail.com)**

Also interesting and worthwhile are  
**[www.onnaturesedge.co.nz](http://www.onnaturesedge.co.nz)**  
& the Tuatapere and Districts Community Facebook page & the  
**This is Tuatapere Facebook page**

## Tuatapere and Surrounding Districts What's On?

Want to know what's on?

Got an event, meeting, sporting event, workshop, entertainment that you want everyone to know about?

Add it to What's On!

Don't have a computer or would like someone to show you how to add your event, feel free to contact us and we'd be happy to help you!

Send us an email: [yourwesternwanderer@gmail.com](mailto:yourwesternwanderer@gmail.com)

Visit **[www.onnaturesedge.co.nz](http://www.onnaturesedge.co.nz)**



**Pull me out and keep  
for future reference**



### COMMUNITY EVENT SIGN GUIDELINES

#### PURPOSE:

The community event sign is a Tuatapere & Districts Promotions Inc initiative. It is a place to promote local events that have a community benefit.

Events will be sourced from the Western Wanderer, otherwise will be received through **email: [yourwesternwanderer@gmail.com](mailto:yourwesternwanderer@gmail.com)** OR drop a note with contact details in the mailbox at **18 Orawia Rd Tuatapere**.

All efforts will be made to accommodate events on the sign board, which may require sharing the event board or a shorter time frame for display.

Promotions Inc will have two people assigned to the event board, thereby covering any event sign changes that may be required.

#### LOCAL GROUP NEEDS TO:

- Provide a message within the following parameters:
  - 3 lines with up to 10 Characters per line excluding spaces
  - Includes Date and Time of event
  - Contact person name and phone number will be provided for any queries.

#### PROMOTIONS INC WILL:

- Make every effort where practicable to put the event on the board up to min 1 day in advance of the event.
- If there are any issues with putting the event on the board the event person will be contacted.

#### CRITERIA:

- An event/celebration within Tuatapere & Districts.
- Community/nationally significant messages.
- Clear message including date/time.
- Enough time given to load message onto board.
- No personally offensive messages will be accepted.
- Community/Voluntary events will take priority over commercial events.

---

---

*If you notice an error or your group has been missed out please contact us on **thisistuatapere@gmail.com** and we will update our master file.  
We are hoping to publish an updated "pull-out" on a regular basis.*

*If you know of someone new to the district please let us know so that  
we can give them a welcome pack.*

## ***Rubbish and Council Regulatory Information***

- ★ Rubbish and recycle bins are emptied alternately on Wednesdays, red-top bin is for general household rubbish and yellow-top bin is for recyclable material. You can also dispose of recyclables at the Recycle Centre at the end of King Street.
- ★ Southland District Council, 0800 732 732, [www.southlanddc.govt.nz](http://www.southlanddc.govt.nz), for all queries regarding buildings, noise control, dog regulations, water, sewerage and stormwater.
- ★ Local Authority representatives, Southland District Councillor George Harpur 027 652 6728; Tuatapere Community Board Chair Margret Thomas (03) 226 6104.

## ***Community Services in Tuatapere and District***

- ★ Emergency calls – police, fire brigade, ambulance – phone 111
  - ★ Non-urgent police inquiries (03) 226 9020 (if station is unmanned, calls will be diverted to Invercargill)
  - ★ Tuatapere has an active St John Ambulance service supported by the local Lions Club. The Ambulance service is free to Tuatapere residents. Both the Tuatapere Ambulance service and Tuatapere Fire Brigade are always looking for volunteers. If you are interested please contact: Jane Norman (03) 226 6502 (ambulance) or Brendon Diack (03) 226 6551 (fire).
  - ★ Medical Centre, (03) 226 6123, 69a Orawia Rd, opposite the Tuatapere swimming pool. Prescription medication can be picked up from the pharmacy depot (03) 226 6999 at the rear of the medical centre. Physiotherapy is also available, contact the medical centre.
  - ★ The St John Western Southland Health Shuttle service is available (by donation) to everyone in Western Southland for any health-related appointments. For bookings, phone St John on 0800 103 046 prior to 3pm the day before your appointment.
  - ★ Postal Services: Chambers Garage, 45 Half Mile Rd, 03 226 6654, open Monday-Friday 9am-5pm. Postal delivery within the town boundary, Monday, Wednesday and Friday.
  - ★ Justices of the Peace: Don Egerton (03) 226 6114, Keri Potter 027 526 3137, Shirley White 027 504 5220, Nicky Baker 027 643 5880.
  - ★ Victim Support: Pat Murdoch (03) 226 6350
  - ★ Tuatapere Plunket Society: Kelly Turner (nurse) 027 687 7921
  - ★ Independent Midwife: Isobel Devery (03) 226 6822 / 027 226 7020
  - ★ Meals on Wheels, enquires to the Medical Centre (03) 226 6123
  - ★ The Waiau Memorial Library is a free community service.  
Open Friday 10am-11.30am, 2.30pm-4pm, 7pm-8pm, Jan Laurie (03) 226 6398
- 
-



---

---

## ***Churches***

- ★ Tuatapere Presbyterian Church, Chris Howden (03) 225 5161, Sunday service 10.30am
- ★ Tuatapere Catholic Church, Anne Horrell (03) 2266627 Saturday service 5.00pm held in the Anglican Church
- ★ Tuatapere Anglican Church, Les Smart (03) 226 6456 first and third Sunday of the month at 10 am

## ***Education and Childcare***

- ★ Waiau Area School (03) 226 6285
- ★ Hauroko Valley Primary School (03) 226 6753
- ★ Tuatapere Playgroup, Friday 9am-12pm, Gemma Bennett 022 040 3368
- ★ Clifden Playgroup, Wednesday 9:30am-12:30pm, Sarah 027 699 5234
- ★ Mainly Music, Monday 10am-12pm, Heidi Berkelaar 022 315 3326
- ★ Tuatapere Toy Library, Nathalie Pahl 027 475 9075
- ★ Just 4 Kids Daycare, Yvonne Nimmo 027 415 7816, Jasmine Van Dam 027 501 7355

## ***Trade and Repair Services***

- ★ Plumbers: Kieran Drake Plumbing 027 424 7102, Millars Plumbing (03) 225 8567, Aparima Plumbing (Alan Eastwood) (03) 234 8016
- ★ Electricians: Jay Brownlee 027 496 5863, Riverton Electrical 027 432 7215, Western Electrical 027 439 3787, Mathieson Electrical 027 634 7534
- ★ Landscape & Gardening: Robert Orchard 027 924 1204, Debbie Chandler 021 259 9620
- ★ Service Stations:  
Tuatapere Service Station (03) 226 6475, Chambers Garage (03) 226 6654
- ★ Appliance and Wood-Burner Repairs: Roald 021 024 88737
- ★ Builders: Aaron Cranston 027 252 7933, Ben McMaster 027 202 7955, Paul Anderson 027 890 3602, Ross Burgess 027 424 6021
- ★ Veterinary Clinics: Otautau Vets Ltd (03) 225 8134, VetSouth (03) 225 8206
- ★ Engineering, Steel Fabrication & Repairs: Mr Steel (Malcom) 027 276 6816

## ***Food, Takeaways and Beverages***

- ★ The Tuatapere Four Square Supermarket, groceries/takeaways, open seven days 7.30am-9pm, (03) 22 66898
  - ★ The Hungry Hippo (03) 226 6417
  - ★ Orepuki Beach Café Orepuki (03) 234 5211
  - ★ Waiau Town & Country Club (03) 226 6489
  - ★ Tui Base Camp Motels, Backpackers and Holiday Park (03) 226 6250
  - ★ Bucket Honey Café 022 088 7993
- 
-

---

---

## ***Sports, Clubs and Organisations in and around Tuatapere***

A&P Society - Isobel Devery 027 226 7020  
Axeman's Athletic Society - Christine Egerton (03) 226 6113  
Bushmans Museum - Lindsay Faulkner (03) 226 6650  
Baths Committee - Kaylene Bennett 027 432 7156 / kaylene@beachvalley.co.nz  
Book Club - Carole Campbell 021 0824 9349  
Cemetery Trust - Maurice Green (03) 226 6065  
Civil Defence - Geoff Evans (03) 226 6258  
Clifden Playgroup - Sarah 027 699 5234  
Clifden Rural Women - Lynley Whyte 021 211 5553 / whyte.5@farmside.co.nz  
Community Gardens - Isobel Green (03) 226 6065  
Country Corner Crafts - Lyla Sherriff (03) 226 6187 Louise Greber (03) 668 6001  
Fire Brigade - Brendon Diack (03) 226 6551 / 027 231 9708  
Golf Club - Carol Erskine (03) 226 6602 / 027 459 9654  
Hauroko Valley Primary School - (03) 226 6753 / office@haurokovalley.school.nz  
Locator Beacon Trust - John Munro (03) 226 6341/027 412 2925 locatorbeacons@gmail.com  
L Clarke Fit - Lorelee Clarke 021 888 415 (fitness classes)  
Waiau Valley Netball Club - Debbie Chandler 021 259 9620  
Orawia Embroidery Group - Faith Black (03) 225 5822  
Senior Citizens - Friday afternoons - Olive Bennett (03) 226 6477  
Southland Locator Beacon - John Munro (03) 226 6341 / 027 412 2925  
Spinning & Weaving - Lyla Sherriff (03) 226 6187  
Squash Club - Kate Gray 0274139124  
Tuatapere Bowling Club - Ian Van Dam (03) 226 6447  
Tuatapere Community Worker - Keri Potter 027 757 5983  
Tuatapere Highland Dancing - Lisa McCracken 027 361 4474  
Tuatapere Hump Ridge Track Office - (03) 226 6739 / Cedric Wedderburn 022 027 3834  
Ladies Bowling Club - Olive Bennett (03) 226 6477  
Tuatapere & District Promotion Inc - Paula McKenzie 027 434 6777  
Tuatapere Lions Club - Jay Brownlee 027 496 5863 Maurice Green - (03) 226 6065  
Tuatapere Pipe Band Hall - Helen Ogle (03) 226 6017  
Tuatapere Playgroup - Gemma Bennett 022 040 3368  
Tuatapere RSA - John Munro (03) 226 6341 / 027 412 2925  
Tuatapere Scouts - Quinton Erskine (03) 226 6969 / 027 223 4842  
Tuatapere Tennis Club - Debbie Fowle 027 525 5052  
Tuatapere Toy Library - Nathalie Pahl 027 475 9075  
Waiau Area School - (03) 226 6285 / admin@was.school.nz  
Waiau Community Theatre - Sue Edgerton 022 164 1971 / Anne Horrell (03) 226 6627  
Waiau Memorial Library - Jan Laurie (03) 226 6398  
Waiau Rivercare Group - Paul Marshall waiau.rivercare.group@gmail.com  
Waiau Small Bore Rifle Club - Quinton Erskine (03) 226 6969  
Waiau Squash Club Captains: Sam Egerton 027 250 5477, Nic Mitchell 021 815 531  
Waiau Star Rugby Club - Blayne de Vries 027 631 7273  
Waiau Junior Star Rugby - Jeremy Gray 027 225 5212 / jk.gray@xtra.co.nz  
Waiau Swimming Club - Kaylene Bennett 027 432 7156  
Waiau Town & Country Club Card Group - Lindsay Faulkner (03) 226 6650  
Western Southland Gun Club (Clay Targets) - Des Chambers (03) 226 6654  
Western Southland Woolcraft Group - Helen Todd 022 378 9743  
Wine Club - Lynette Chambers (03) 226 6654

---

---

**Pull me out and keep  
for future reference**

# INTRODUCING

## STREBEL STRIP TILLER WITH A KUHN 6 ROW BEET PLANTER COMBINED FRONT FERT HOPPER



### STRIP TILLER BENEFITS:

ONE PASS - SAVING YOU MONEY

LESS CULTIVATION = LESS BUGGING

KUHN BEET PLANTER IS ABLE TO SOW SWEDE & BEET



FOR MORE INFO OR TO BOOK PH:

**Kahu - 027 5183 448**





## Registered **ELECTRICIAN**

For all electrical work  
*No job to small*  
A/Hours service available

**Jay Brownlee**  
8 Carlyle Street, Tuatapere 9620  
A/H 03 226 6673  
Mob 027 4965 863  
sparkieintuatapere@gmail.com



## TUATAPERE TE WAEWAE *Community Board*

**Margaret F Thomas, Board Chair**

arpad@xtra.co.nz      03 226 6104      027 231 5581

Well, I have to say something about the weather. Rain, rain, rain and more rain. How are you all managing? We all should be looking after each other. Please check on your neighbours and family members. Make sure everyone is warm and dry. Be a great neighbour.

There have been plenty of activities to keep you occupied - rugby, netball, squash, golf, bookclub, your usual meeting that you would attend, a meal out at the licenced places - to name a few.

Thank you to Tuatapere and Districts Promotions Inc for organizing the Mid-Winter Muster. The club was beautifully decorated. Lights everywhere inside and out. The kids had a wonderful treasure hunt. They were all extremely excited to find little surprises. Mark it on your calendars for next year - details later.

Another project that has been successful is the "Soup and Chat" lunches that have been held at the Tui Base Camp, once a month. These have been organised by the Tuatapere Community Worker - there still may be a couple more to come. Did you get to any?

I was very annoyed that a person or persons felt it was necessary to burn down the public toilets at Cosy Nook. This toilet will be replaced. I am not sure when, but I hope it will be before Christmas.

The Tuatapere Te Waewae Community have started on the work programme.

As you would have read in the LTP playgrounds are being upgraded. The first one for us is the playground at Monowai. The Monowai residents' group have already had a couple of planning meetings with us and the staff.

Congratulations to the Tui Trails Committee for producing their wonderful new pamphlet.

Recently some of the Stags Rugby Team paid a visit to the Waiau Rugby Club. About thirty young members from the club came along. They practiced drills etc in the school gym. It was great to see two Tuatapere boys, both ex pupils of Waiau College (now WAS), Flynn Thomas and Regan Bennett.

24 Thanks for the visits Southland Rugby!

**MILLARS**  
- PLUMBING  
- GAS FITTING  
- DRAINLAYING  
- LICENSED BUILDER  
Master Plumbers  
Ph 027 4340 705 or 03 225 8567

**Aaron Cranston Building Ltd**  
**027 252 7933**  
✓ Renovations  
✓ Extensions  
✓ New Builds  
✓ Sheds/Farm buildings  
✓ Decks  
✓ Pre-purchase house  
Inspections  
Call us for any building requirements  
Ph 027 252 7933 email: aaroncbltd@gmail.com



*George Harpur, SDC Councillor, Waiau Aparima Ward*

Hi and welcome to my August report and what an eventful month we have had.

Having just returned from a four week tour of the South Island it was rather distressing to see first-hand the demise of many of our rural towns. These once centres of the local business and sporting activities are being stripped of their mana by various government initiated policies that have reduced the need for local trades and service personnel along with their facilities that we once enjoyed. As a youth working in various sectors of the rural sawmills the common catchword was if the farmers are doing well this will flow on and we all will do well. Oh my, nothing has changed as to the economic factors but alas the administration in this current era appear to be a little off screw with how to achieve results without the necessary consultation and the basic business knowledge in the competitive commercial market.

The howl of protests over the whole nation on Friday the 16th just may awaken some grey matter in the heads of our senior politicians and encourage them to consult with the economic sector before making rash decisions on policy delivered by unenlightened bureaucrats without prior consideration to the long-term consequences of hasty legislation. From a government that has reinstalled the four well-beings, social, economic, environmental and cultural outcomes into consideration to their future plans for our nation of five million, I feel more than a little concerned for the future of Democracy in the land of Aotearoa. Our way or no way has never been in the curriculum of rural New Zealand and may it forever remain as such.

With these storm clouds on the horizon, I feel there is little need to comment on the weather.

That's me for this month.

Cheers to all and stay warm.

**Phone: Anita Green 027 506 2418**  
Tuesday 9-5pm, Thursday 10-8pm, Friday 10-5pm - Appointments are encouraged.

## CHAMBERS REPAIR SERVICE

**45 Half Mile Road, Tuatapere**

**Ph: (03) 226 6654**

- 24 hour Self Service Fuel
- Full Mechanical Workshop
- NZ Post Centre
- Agents for Wide Span Garage



Bring your lawnmower in for a service now & beat the rush

**FATHERS DAY 5TH SEPTEMBER**

**Give DAD a MTA GIFT VOUCHER**

## **PLATE** PASTURE METER READING THAT'S QUICKER AND EASIER, WITH AT THE GATE REPORTS **METER SERVICES** TROUGH CLEANING SERVICES

- Specialist in quality pasture meter reading with advanced sensor technology
- Provide 200 measurements per second or 18,500 readings over a single 500m pass
- Provides a fully integrated electronic support system
- Provides a secure web-based storage of information with easy access
- Prompt generated feed wedges for rapid decision making and seasonal comparisons
- Generate reports at the gate, supplying valuable pasture cover data and comparable results every time
- Improve heath & increase animal hydration
- Enhance production & improve water quality
- Reduce bacterial/algae contamination of trough water

**CLEAN TROUGH WATER MEANS IMPROVED LIVESTOCK HEALTH**

Now 2 bikes available for pasture metering



Brett George • P 027 351 3408



E [platemeterservices@gmail.com](mailto:platemeterservices@gmail.com)

# WAIAU HEALTH TRUST – August 2021

## Medical Centre

### Covid Vaccinations Clinics:

As from 4th August we will be holding regular clinics in Tuatapere being run by our staff.

If you fall in the Group 3 category you will receive a text in the near future. If you need help or you do not have a cell phone, please phone **(0800) 829 768** to book your vaccination time/date. Please make sure you specify you would like to go to the **Tuatapere Clinic** when phoning to book.

**Clinics will be continued after this period to allow all age groups to receive their vaccination in the correct timeframe.**

Please see dates & times of clinics as follows for August - October:

Date	10.00am - 12.00pm	1.30pm - 4.30pm	Date	10.00am - 12.00pm	1.30 pm - 4.30 pm
4 <sup>th</sup> August	am	pm	6 <sup>th</sup> October	am	pm
11 <sup>th</sup> August	am	pm	7 <sup>th</sup> October	am	pm
19 <sup>th</sup> August	-	pm	8 <sup>th</sup> October	am	pm
25 <sup>th</sup> August	am	pm	13 <sup>th</sup> October	am	pm
26 <sup>th</sup> August	-	pm	14 <sup>th</sup> October	am	pm
1 <sup>st</sup> September	am	pm	15 <sup>th</sup> October	am	pm
2 <sup>nd</sup> September	-	pm	20 <sup>th</sup> October	am	pm
9 <sup>th</sup> September	-	pm	21 <sup>st</sup> October	am	pm
16 <sup>th</sup> September	-	pm	22 <sup>nd</sup> October	am	pm
23 <sup>rd</sup> September	-	pm	27 <sup>th</sup> October	am	pm
30 <sup>th</sup> September	-	pm	28 <sup>th</sup> October	am	pm
1 <sup>st</sup> October	am	pm	29 <sup>th</sup> October	am	pm

Kind Regards

Jo Sanford (Manager)

Cell: 027 295 0429



**Waiau Health Trust**  
**69a Orawia Road, Tuatapere**  
**Approved Registered ACC Provider**  
**Monday to Friday**  
**9:00am – 4:30pm**  
**Ph.: 2266123**

*Practitioner Hours*  
*Amanda McCracken (NP) – every*  
*weekday*

*Sheryl Eden (NP –every Monday &*  
*Tuesday)*

*Murray Allen (GP)*  
*Thursdays*

**Physiotherapist**  
*Tuesdays & Thursdays*  
*Phone for an appointment*

*Podiatrist*  
*Visits regularly –*  
*Phone for an appointment*

*Warts/Minor Skin Lesions*  
*Liquid Nitrogen treatment available*  
*Phone for an appointment*

*Homebased Maternity Care*  
*We are offering this service*  
*in the patient's home.*  
*Please contact Jo Sanford*  
*on 2266123 for enquiries.*

*Day Activities Programme for*  
*the Elderly*  
*Every Tuesday & Wednesday*  
*Please phone for further information.*

*District Nursing*  
*Available as required by referral*



# Hauroko

## VALLEY PRIMARY SCHOOL

**Kia ora, Bula, Namaste**  
*Western Wanderer Readers*

To end Term 2, it is great to reflect on what has been a busy term with many varied experiences for our children. We welcomed a few families to HVP - Hu/Lu, Lawton/Rickerby and Sutherland. HVP also farewelled the Nibin and Cochrane whanau; we wish you all the best for new opportunities.

To celebrate Matariki our tamariki weaved harakeke into ika/fish and putiputi/flowers thanks to Matua Des for guidance. Our families joined us for a hangi on a magical Winter evening. For many the hangi was a first in experiencing traditional cooking in an earth oven. Thanks to Rosanne, Pete, Tia and Felix for guiding us through the process. Also thanks to Alice for organisation and to each parent helper that gave of their time to support this mammoth and memorable event.

We look forward to an Arts & Cultural focus in Term 3 where we are learning more about our overarching theme for 2021 - Diversity. We have our in school Poetry Recitals for Years 1-3 and Speech Presentations by our Year 4-8 students. We are delighted to be hosting the Inter-school Speech Cluster Competition on Thursday 19th August at 6.00pm. This is for all Year 5-8 finalists from Otatau Primary School, St Patricks, Nightcaps and Waiau Area School.

Our tamariki and kaiako/teachers are developing our kapa haka for the Miharo Polyfest. Save Friday 27th August for our performance at Stadium Southland, Invercargill. To end Term 3 we are looking forward to experiencing a powhiri and learning more about the culture and history of Western Southland during a visit to Takutai o Te Titi Marae, Oraka.

Term 3 sees us develop our Winter Sports skills with our senior students preparing for the Western Southland and Invercargill Netball Tournaments. Our Hockey Teams are continuing their weekly games in the Invercargill Hockey Competition. To our Coaches, Managers and parent helpers supporting transporting students - thanks! The annual HVP Ski Trip takes place on the first Friday back as families head to Coronet Peak, Queenstown.

We are grateful to our community of supporters providing numerous opportunities for our learners. These connections to people and place strengthen our learning programmes enriching classrooms for all learners.

**Nga mihi nui,**

Julia Waikato,  
Principal/Tumuaki

community hapori hangi  
whanau karakia kai  
Matariki whanaungatanga



# Ratty Says ...

Waiau Memorial Library

Guess what I did? I went on a Wilderness adventure. It was a wet, windy and miserable day, there was even some hail. And mud, lots of mud. It was the BEST day EVER! I had so much fun. It was run by Karina, she's 18 and knows heaps about nature and wilderness skills,



like how to start a fire with a bow drill. I was a bit worried Karina wouldn't be able to start a fire because it was really wet, so I brought a big box of matches with me, just in case.

After telling us a bit about herself, Karina and her sisters Laura and Theresa showed us how to Fox Walk. If you do it properly you can walk quietly and not scare animals. I practiced my Fox Walk at home on the dog. I couldn't sneak up on him at all. I must have been doing something very wrong because the dog is deaf. Stepping on his tail probably didn't help.

Then I learned how to make a fire and by learned, I mean I sat and watched Karina start a fire. It was really cool to watch, she made it look so easy. Karina used a bow drill to make some embers, then put them into a nest and the next thing you knew she had a fire going. The fire didn't go out when it rained, it was that good. I sat in front of it and got my feet all toasty warm.



When the fire burned down and there were coals we started to make a spoon. You put a coal on a piece of wood and hold it down with a twig. The ember burns a hole in the wood. When you get the shape you want you start to carve the rest of the spoon with a knife. That's right, they let me use a knife. It's hard work carving a spoon when you only have 3 fingers. It took me ages to carve my spoon, I had to finish it at home. I may have cut my finger. There was blood.



I had heaps of fun and made new friends and I learned lots of new, cool stuff. That's what having adventures is all about. I can hardly wait for my next adventure.



## Tui Base Camp



**Open from 8:30am  
every day!**

### Upcoming Events

★ **It's our 2 Year Anniversary  
and we're celebrating!** ★  
**September 4th**

Live Band

**JUSTIN  
FUNK  
MONKEY**



**PLUS lots of specials during the evening!**

Due to popularity we have expanded our Friday night curries to including it every day on our menus, also with a vegetarian option! We have also had a number of other changes so come and check it out.

**For all of your dine in and takeaway  
requirements including:**

In-house roasted Amore Coffee

In-house made pies, sausage rolls,  
cheese rolls

Range of breakfast options

Packed lunches

Catering

**Phone: (03) 226 6250**

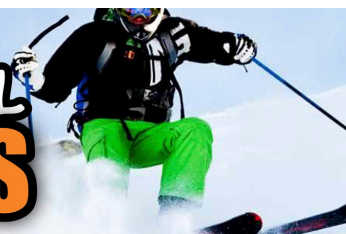
[www.tuibasecamp.co.nz](http://www.tuibasecamp.co.nz)







# SLIDE IN-STORE FOR COOL AUGUST DEALS



<p><b>\$15.99</b> EACH</p> <p>Woodstock (incl Zero) 7% 330ml 6pk cans</p>	<p><b>Not Stocked</b></p> <p>Scapegrace Vodka/Gin 250ml 4pk bottles JD's &amp; Cola Double Jack 375ml 4pk cans</p>	<p><b>Not Stocked</b></p> <p>Jim Beam Gold / CC Premium 7% 330ml 6pk cans</p>	<p><b>\$21.99</b> EACH</p> <p>Cruiser 5% 12pk bottle range</p>	<p><b>Not Stocked</b></p> <p>Tui Hard Soda 330ml 10pk cans</p>	<p><b>\$21.99</b> EACH</p> <p>Jim Beam &amp; Cola/CC (incl zero) 4.8% 10pk cans</p>	<p><b>Not Stocked</b></p> <p>ODD Company 10pk can range</p>
<p><b>\$22.99</b> EACH</p> <p>Jack Daniel's &amp; Cola Double Jack 250ml 10pk cans</p>	<p><b>Not Stocked</b></p> <p>Major Major 10pk can range</p>	<p><b>\$24.99</b> EACH</p> <p>Gordons G&amp;T, Gin &amp; Soda (pink/sicilian) 12pk 250ml cans</p>	<p><b>Not Stocked</b></p> <p>Effen Vodka JB / CC 4.8% 10pk bottle range</p>	<p><b>\$26.99</b> EACH</p> <p>Smirnoff Ice 5% 10pk bottles</p>	<p><b>\$29.99</b> EACH</p> <p>Cody's 7% 18pk cans</p>	<p><b>\$32.99</b> EACH</p> <p>Woodstock 7% 250ml cans</p>
<p><b>\$38.99</b> EACH</p> <p>Long White 15pk bottle range</p>	<p><b>\$13.99</b> EACH</p> <p>Stoneleigh Marlborough / Lighter ranges</p>	<p><b>Not Stocked</b></p> <p>19 Crimes range</p>	<p><b>\$13.99</b> EACH</p> <p>Lindauer Classic &amp; Enliten ranges (ex reserve)</p>	<p><b>\$21.99</b> EACH</p> <p>Jules Taylor range (ex Reds) Rua Pinot Noir</p>	<p><b>2 FOR \$25.00</b></p> <p>Canterbury Cream</p>	<p><b>\$36.99</b> EACH</p> <p>Malibu/ Kahlua (incl salted caramel) 1L</p>
<p><b>\$36.99</b> EACH</p> <p>Blackheart / Woodstock 1L</p>	<p><b>\$37.99</b> EACH</p> <p>Gordons Pink / Sicilian Lemon 700ml</p>	<p><b>\$37.99</b> EACH</p> <p>Teachers / Russian Standard 1L</p>	<p><b>\$41.99</b> EACH</p> <p>Canadian Club (incl spiced) 1L</p>	<p><b>\$42.99</b> EACH</p> <p>Absolut/ Ballantines Beefeater 24 700ml</p>	<p><b>\$47.99</b> EACH</p> <p>JB 1.125ml / JB Devils Cut / JB Black 1L</p>	<p><b>\$51.99</b> EACH</p> <p>Malfy 700ml range Jameson 1L</p>
<p><b>Not Stocked</b></p> <p>JB Double Oak 1L Haku Vodka / Roku Gin / Ratu Rum range 700mls</p>	<p><b>\$54.99</b> EACH</p> <p>Jack Daniels 1L Woodford Reserve 700ml</p>	<p><b>Not Stocked</b></p> <p>Chivas Regal 12yr \$51.99 Chivas Regal 15yr \$74.99 Chivas Regal 18yr \$89.99 all 700ml</p>	<p><b>Not Stocked</b></p> <p>Old Mout 1.25L cider range</p>	<p><b>Not Stocked</b></p> <p>Kingfisher Strong 6pk cans</p>		
<p><b>\$13.99</b> EACH</p> <p>Monteiths 6pk bottle range</p>	<p><b>Not Stocked</b></p> <p>Panhead 6pk range</p>	<p><b>Not Stocked</b></p> <p>Sol 12pk bottles</p>	<p><b>\$22.99</b> EACH</p> <p>Somersby 12pk bottle range</p>	<p><b>\$24.99</b> EACH</p> <p>Heineken 12pk bottles</p>	<p><b>\$25.99</b> EACH</p> <p>Carlsberg 15pk bottles</p>	<p><b>\$26.99</b> EACH</p> <p>Tui/Export Gold/Extra/ DB Draught 15pk bottles</p>
<p><b>\$26.99</b> EACH</p> <p>Export 33 15pk bottles</p>	<p><b>Not Stocked</b></p> <p>Haagen 24pk bottles</p>	<p><b>\$36.99</b> EACH</p> <p>Lion Red / Waikato / Speights or Summit 24pk bottles</p>	<p><b>\$37.99</b> EACH</p> <p>Speights Summit Ultra Low Carb 24pk bottles</p>	<p><b>\$41.99</b> EACH</p> <p>Asahi 24pk bottles</p>	<p><b>Not Stocked</b></p> <p>Steinlager 24pk 330ml bottles</p>	

Promotion period between 1/08/2021 to 31/08/2021. While stocks last. Promotion only available at participating stores. Please contact your local store to confirm whether they are participating in the promotion and check the pricing in-store prior to purchase. Online pricing will vary.



**100% NEW ZEALAND OWNED AND OPERATED**  
thirstyliquor.co.nz

FOLLOW US ON  
SOCIAL MEDIA



**ASK ABOUT  
LOYALTY CARD  
BENEFITS &  
GIFT VOUCHERS**





# Your Local Graphic Designer & Printing Specialist

## McMAHON design studio

9 Cumnock Street, Wallacetown

P: 03 235 8967 M: 027 242 8109

E: mcmahondesign@outlook.com

LOGO/EMBLEM DESIGN including full branding packages

ADVERTISING & SIGNAGE DESIGN

SOCIAL MEDIA GRAPHICS & EMAIL SIGNATURES

PHOTO EDITING & CUSTOM ART

CERTIFICATES - PRIZE CARDS - PROGRAMMES

CALENDARS - BOOKLETS - REPORTS - NEWSLETTERS

MAGAZINES - CATALOGUES

ALL OFFICE STATIONERY

PERSONALISED STATIONERY & CARDS

PRESENTATION & PROMOTIONAL ITEMS

WEDDING & EVENT STATIONERY

**AND MUCH MORE...**

## August Special Offers:

### Branding Packages

Book a logo/emblem design or full branding package during the month of August and get

1,000 Full Colour Business Cards  
& 1 Ream of A4 Letterhead paper

designed & printed for **FREE!** (Valued at \$265)

Quote the code: **FRESH LOOK AUGUST** or mention this advert when ordering to receive this special offer.



### Farm Maps

Order 5 or more A4 or A3 Size Farm Map pads (colour or black & white)

during the month of August and get **1 Pad FREE!**

Quote the code: **FARM AUGUST** or mention this advert when ordering to receive this special offer.



Design · Print · Copy



Get in touch with us today  
for your free consultation and quote!

**accelerate**  
PHYSIOTHERAPY

office@acceleratephysio.co.nz  
60 Deveron Street, Invercargill  
(off street parking)

0800 291 475

Accelerate is a gentle form of exercise, effective in providing long term solutions after an injury, especially low back pain.



We have interests in:

- > Spinal/Back & neck injuries
- > Sporting Injuries
- > Running, Cycling & Multisport
- > Men & Women's Pelvic Health
- > Acupuncture
- > Balance & Dizziness
- > Workplace Injuries / Ergonomic Onsite
- > Work Evaluations & Educations
- > Pilates

Joel Barnes  
BPHYT, BExSci

Andrea Robertson  
BPHYT, PG Cert ACUP

Andrea Murray  
Dip PHYT Dip M.T.



www.acceleratephysio.co.nz



## CANTERBURY CARS

### 4WD Specialists

For all your vehicle requirements

Cars, utes, 4WDs, vans

Finance available

Contact: Murray Dowling

027 556 2655

Visit our website  
www.canterburycars4x4.co.nz

Specialising in  
Dairy Conversions  
Rural Fencing  
Post & Rail

**H Gill Fencing,**  
Eastern Bush

Phone 021 225 5489

After Hours 03 225 5488

Email hamish@hgillfencing.co.nz







**Agricultural Contractors servicing Western Southland and beyond.**

**BALAGE - SILAGE - GROUNDWORK - FEED TRADING**  
**Nigel 021 226 6156 / [fowlecontracting@gmail.com](mailto:fowlecontracting@gmail.com)**

# Tui Trails Update

Anne Horrell, Chairperson Tui Trails Committee

I am delighted to report that our 'Tui Trails' pamphlet has been produced and is currently available in many places around Tuatapere. If you haven't already got a hold of one-please do! I am sure you will agree that our new brochure is an asset for Tuatapere. In it you will find a guided narration for each of our local tracks and a suggested route to follow. There is also an excellent map showing the situation of each track within Tuatapere.

We hope that this brochure will encourage visitors to our town to stay a while and enjoy the native bush we have right on our doorstep. Most important of all, we hope that the brochure will encourage you, as a Tuatapere resident, to continue to explore and enjoy our beautiful, natural environment!

At this stage pamphlets have been distributed to various outlets in Tuatapere but will soon be distributed elsewhere as well e.g. Te Anau, Riverton, Invercargill, Queenstown etc.

I would like to say a huge thank you to the Tui Trails committee members for your contribution and your enthusiasm towards making our beautiful pathways accessible for all to enjoy.

Also big thanks to Donna Hawkins, graphic artist at Southland District Council, who brought our brochure ideas to the production stage in her typically creative, innovative style.

Now grab a brochure and a friend or family member, put on your walking shoes and enjoy our 'Tui Trails'!



## PROPERTIES WANTED!

Contemplating selling? You might be surprised by what your property could fetch on today's market

Contact Julie today for a free appraisal and to discuss how you could take advantage of this buoyant property market



**Julie Guise**

**021 256 4164**

**julieguise@sre.co.nz**

**SOUTHLAND REAL ESTATE LTD**  
Licensed under The Real Estate Agents Act 2008

**SOUTHLAND REAL ESTATE LTD**  
Licensed under The Real Estate Agents Act 2008

For all your Accounting and Tax Solutions

Ask for Janice or Trevor England

**03 2266110**

**Aparima Accounting Ltd**

**57 Main Road Tuatapere**

## GREAT FREIGHT RATES

**Same Day  
Door to Door  
Monday - Friday**

**General Light  
Freight Service  
No Rural Surcharge**



- Fresh & Chilled Freight
- Meat & Vegetables
- Flowers & Chocolate
- Bottled Milk
- Prescriptions
- Vet Supplies
- Ag. & Vehicle Parts
- Hardware
- Oil & Lube
- Ammo & Chemicals

**Invercargill - Winton - Drummond - Otautau  
- Tuatapere - Ohai/Nightcaps - Riverton**

**027 340 5845**

**bulletcourier8@gmail.com    [bulletcourier.org](http://bulletcourier.org)**





**DRAKE**  
PLUMBING & DRAINLAYING LTD

C: 0274 247 102  
T: 03 225 8652  
E: [admin@drakeplumbing.co.nz](mailto:admin@drakeplumbing.co.nz)

**KIERAN DRAKE**  
Certifying Plumber  
& Drainlayer

		1				2		
	3						4	
5				3				6
			1		7			
	4						8	
			9		2			
3								8
	6			5			3	
		2				7		



**For all your engineering,  
steel fabrication and repair needs!**

(03) 235 8853  
027 229 7760

# St John Tuatapere

Jane Norman, Station Manager



**St John**  
Here for Life

Although things might seem quiet on the St John front in Tuatapere, behind the scenes there has been a lot happening.

Our new ambulance shed is almost ready. We are very grateful to the Lions Club for their hard work and commitment to ensure that we have a purpose built facility that we have been advised will withstand any earthquake!

In conjunction with the Lions Club we are planning to have an open day once the building is signed off and we have moved in - watch this space for further details.

We have had our ambulance upgraded, its now one of the bright yellow ones.

In the past 18 months or so we have several of our crew complete ambulance qualifications. One has completed a National Diploma which requires many hours of study and on road time. 3 have completed their initial ambulance training / qualification.

We have a small dedicated crew of seven volunteers who respond whenever possible to calls within our community.

Two crew from within our ranks have recently gained paid positions within St John. This highlights the fact that the St John volunteer pathway can lead to a career as a member of the St John ambulance crew.

If you or anyone you know is interested in more information on becoming a member of the ambulance service for our local community get in touch.

Contact Jane on 021 207 1077



## CONTACT US TODAY

**Phone 03 221 7192**

**Fax 03 221 7194**

- **Excavators for general farmwork**
- **Laser guided drainage**
- **Gorse mulching & land clearing**
- **Lane maintenance**
- **Conversions**
- **Effluent Ponds**
- **Demolition**
- **20 tonne bulldozer, roller, grader**
- **Drain ploughing & alkathene laying**







## Pioneer Families of the Waiau Valley

### CHARLTON George of Tuatapere

Wife's maiden name and first names:

Location Settled: Tuatapere

Date of Arrival: 1910

Origin: George's father was **William Charlton** who came from Greystead, Northumberland in 1870 aboard the "Pheobe Dunbar" to Port Chalmers. He settled in Clinton as a blacksmith. There is still an oak tree which he planted in the middle of Clinton. He married **Annie** and had three children, Arthur, Frances and **George**. **George Charlton**, this son, was born in Clinton in 1879, and came to Orepuki as a storekeeper. His shop was later owned by Norman and Nan McNay. He married Janet Park Pearson and had 3 daughters and 1 son.

**Occupation on Arrival:** Storekeeper. He purchased Sneyd's Store and turned it into a thriving business. His name appears on the frontage of the old building today – now the Youth Centre (2001).

#### Descendants:

1. **Molly** married Les Guthrie who owned sawmills up the Groveburn – later bought by Port Craig Timber – children 3 girls
2. **William Alexander** (Lex) married **Betty McKay** 1 son, 1 daughter
3. **Nancy** engaged to marry **Ray Watson** – killed in WW2, also died 26 years
4. **Betty m. John Chewings**, div. now living in Christchurch 3 daughters

#### Lex's Descendants

1. **George** Jnr married Elaine King of Tuatapere. 4 boys 2 girls
2. **Catherine** m. Ron Shierlaw 1 boy 1 girl

#### George's descendants

1. **Tracee**
2. **Catherine**
3. **Andrew** m. Diane Brown
4. **Shaun**
5. **Nathan**
6. **Kieran**

**George** the storekeeper was an astute businessman and turned the Charlton Stores into a thriving business, the leading store in the little township. He supplied provisions for the Port Craig Mill, delivering them along to Bluecliffs Beach where the company launch would load them for the Port Craig landing. Until 1940 he had half shares in John McIntyre Ltd but sold his share to Jack and Stuart McIntyre because of ill-health. He was a founding member of the Masonic Lodge, First president of the Bowling club, was one the founding members of the New year's Day Sports meetings, was an active rugby player in his youth in Orepuki and was around to lay the foundation stone of the Tuatapere Anglican Church (aply Called **St George's**) 16 Feb 1928.

(To be continued next issue ...)

Special thanks to the late Malcolm Garrett  
for these records –  
and many thanks to Margaret Thomas who  
gave us access to them so that we can  
share them with you.

# DTKINGS TRANSPORT LTD

We require  
**BULK SOWER OPERATORS**  
for our modern units based at  
Pukemaori. Applicants for this  
position would have a minimum  
Class 2 Licence but a four or five  
licence would be advantageous, if  
you live in Tuatapere or within the  
surrounding districts give me a call.

Financial assistance may be given to  
help obtain a Class 2 Licence.

You may have had some tractor /  
truck driving off road experience  
and want to further your interest in  
heavy transport. We are happy to  
help you into this position.

If you are reliable, have a can-do  
attitude and think you would be  
able to operate a bulk sower, then  
we have a position for you with good  
remuneration and allowances  
dependent on relevant experience,  
also you can join our free medical  
insurance scheme.

D T Kings transport operates under  
a drug and alcohol free policy;  
Successful applicants will need to  
pass a pre-employment test.

**Local company employing  
local people.**

For more information confidentially,  
on this position email or call  
**Paul Williamson 03 2255899**  
**Careers@dtking.co.nz**







# WESTERN Wanderer's PERSONS OF INTEREST

Manpreet & family from Jenkins Road Dairies

## How long have you & your family been in Tuatapere?

Our family moved to Tuatapere from Woodlands (just outside Invercargill) on the 1st June 2020 so we've been here now for just over a year. We had the opportunity to move to Southland six years ago and Tuatapere is by far our most favourite place. We do not miss "the city" at all!

## How would you describe Tuatapere to a complete stranger?

We employ five permanent staff and a few temporary staff so we are always describing Tuatapere to people at lot!

We say this is a nice, vibrant community with the Hump Ridge Track and beaches. There's hunting and fishing, Lake Manapouri is close by, Queenstown is only a few hours away. Tuatapere is a small town away from the city (Invercargill). Everything is here to live a good life!

## What do you like to do in Tuatapere?

Our family is very busy here with lots of community activities. We like to go down to the Waiau Town and Country Club and Tui Base Camp with our staff. I have recently joined the local volunteer Fire Brigade. It's great to give something back to the community and I'm really enjoying being with the fire crew - they are a good bunch of people.

## What do you notice about Tuatapere and what's the best part?

When you are driving around Tuatapere you can see that everyone is trying to do their bit to make our community better. The flags look great when they are up and there's so many different activities to take part in or to do for the community. We enjoyed taking part in the Mid-Winter Muster recently organised to meet people in the community.

The people here are warm and welcoming - we feel more at home here than the other places we've lived in Southland. We're here for the long haul and have no plans to move. Everyone in the family is happy here.

The contractors we work with are really supportive and we have employed lots of different nationalities to work for us - they also have been welcomed very warmly.

## What would you like Tuatapere to know about Jenkins Road Dairies?

In the past Jenkins Road Dairies has had some negative publicity around environment and animal welfare issues. We take pride in and look after any property we are managing and we strive to be good community members and good neighbours.

We are very pro-active about any issues or suggestions - like sometimes when the effluent is spread out it can be an issue for the neighbours - please let us know immediately, we want to hear from you. Text or call me: Manpreet 027 287 0477

## **For Landscaping, Lane Maintenance, Gravel Supply & Cartage**

**GRADES OF CRUSHED & SCREENED GRAVELS, ALKATHENE LAYING, ROOTRAKING, FARM TRACKS, DAIRY LANES**



**K J SUTHERLAND  
GRAVELLING & AGRICULTURAL CONTRACTOR  
2475 OHAI-CLIFDEN H/WAY  
ORAWIA R.D2 OTAUTAU 9682  
Ph 0274 367 934**

**ELEVATOR SCRAPER, BOBCAT & ATTACHMENTS, LANDSCAPING, TRENCHING AUGERS**

### **Supplies of Gravel Ex Waiau River**

River Run Screened Grades Concrete Gravel Pea Gravel  
Rejects for soak holes Crushed - AP30 and Ap65

Peebles for Sheep and Cattle yards and calf sheds  
Fines suitable for cow lane capping

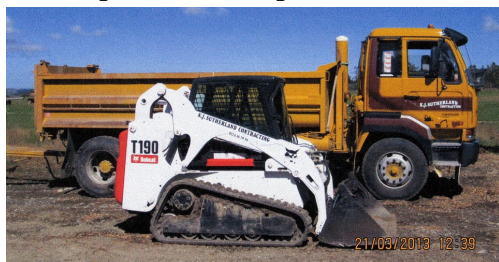
## **K.J. Sutherland Contracting**

**Bobcat T190**

**With attachments: Landscape Rake,  
Augers and Trencher**

**Suitable for all landscaping, shed and yard  
maintenance**

**Muck-spreader and tip trailer available**



**PHONE KEVIN  
027 367 934 / (03) 225 5716**

## **INDEPENDENT MIDWIFE**

**ISOBEL DEVERY**

*Caring for women throughout  
Pregnancy, Birth till six weeks  
Post Natal.*

*Choices for place of birth,  
Home or Winton Birthing Units  
or Kew Hospital.*

*Free pregnancy tests  
available on request.*

**Phone: (03) 22668822  
027 2267020**

©Peccare, EthicGraphics®



# Alex Reid CONTRACTING

**Paddock Cultivation from  
Ploughing to Sowing Dry Hire  
available Aerating Direct  
Drilling Ridging Mulching**



## **Dairy Lane Maintenance**

Tip Trailers • Vibrating Roller • Effluent Services

## **Sheep Conveyor**

Drenching, Vaccination etc • 3 way draft



**Rural Contractors**  
NEW ZEALAND

## **Large Skid Steer for calf shed cleaning, loading Muck Spreaders etc**

4 Muck Spreaders • 16,000 litre Slurry Tanker  
• Pond Stirrer • Umbilical Slurry System

**PH ALEX 0212775308 CELL  
03 2255377 HOME**

# **Bucket Honey Cafe**

We have

- HONEY
- Great Coffee
- Homemade Pies
- Juice Bar
- Sandwich Bar
- Homemade Icecream

**Come in and try our honey!**

Phone: 022 0887 993  
16 Orawia Road, Tuatapere







## Tim and Superior go the extra mile

Are you frustrated with the lack of service from your local fertiliser consultant, peddling the same advice year after year regardless of your production outcomes, environment and sustainability?

Give **Tim Adcock** of Superior Fertiliser Specialists a call. He will bring a whole new meaning to service and client/advisor relationships.

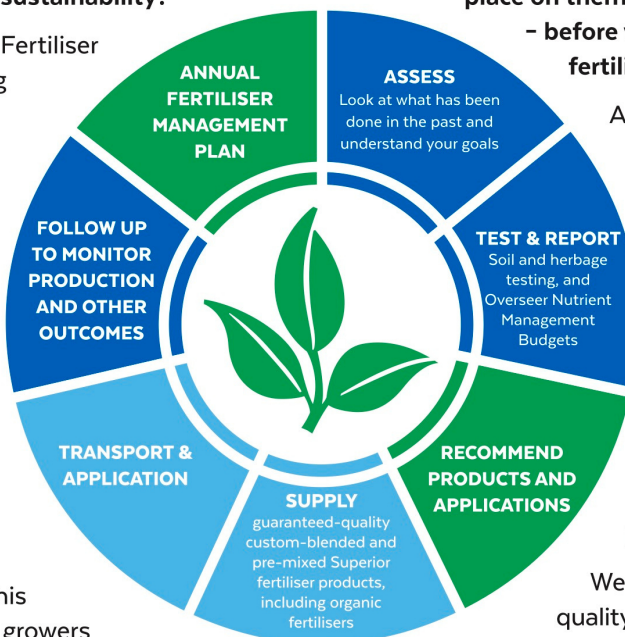
Tim is a key member of the highly skilled Superior team totally committed to helping you develop healthier, more productive soils and plants.

We form a specialist fertiliser company that provides high quality advice and products at competitive prices. We have been doing this for South Island farmers and growers for just on 20 years.

Superior promotes a total soil care package. First, we get to understand the make-up, nutrient status and health of your soils, the demands you are going to place on them, and your production goals – before we apply one kilogram of fertiliser.

A comprehensive regime of vigorous soil tests will be undertaken and the results will provide the basis of a Superior Fertiliser Management Plan customised for your unique situation. This will complement your farm's Environmental Plan and provide the blueprint for an ongoing annual fertiliser programme.

We then supply guaranteed-quality solid fertiliser for your pasture and crops, monitor production and other outcomes, and update your Plans as required.



It's free to talk so don't hesitate to give Tim a call.  
Phone 021 418 224

**Tim Adcock**  
Fertiliser Advisor  
Otago/Southland  
021 418 224  
tim@superior.net.nz



 FERTILISER SPECIALISTS  
**SUPERIOR**  
[www.superior.net.nz](http://www.superior.net.nz)

**TUATAPERE SERVICE STATION**  
**20 ORAWIA ROAD**  
**PHONE: 03 2266475**



**Ridgeline Special**

**Kid's Trousers**

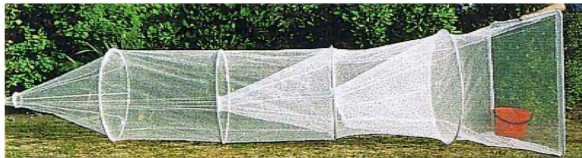
**Sizes 4 -10**  
**Only \$20.00**  
**RRP \$39.99**



**WHITEBAITERS**

**In stock now**

Akura Set Net



**\$500.00**

Mini Sock Net

Waiau Scoop Net



**\$330.00**

Temuka Scoop Net

Special Set Net & Trap 1200x760

Ultron Netting

English Netting

Aluminium Mesh

Waders, Rope, Karabiners and much more

**HOURS**

**Monday to Friday**

**8.00am to 5.00pm**