



# WESTERN Wanderer

Tuatapere | Clifden | Orawia | Blackmount | Monowai | Colac Bay | Orepuki

Cover Photo Credit: Nathalie Pahl - Reflection on the Waiau River

Issue 235

JULY 2021

*At a glance ... what events are on this month?*

MONDAY	TUESDAY	WEDNESDAY	THURSDAY	FRIDAY	SATURDAY	SUNDAY
			1	2	3	4 Riverton Community Arts Centre PopUp Exhibition <b>MID WINTER MUSTER Community Pot Luck Dinner WTCC 4pm</b>
5	6	7	8	9 Riverton Community Arts Centre 2nd PopUp Exhibition Starts 9th July until 12 July <b>Last Day of Term 2</b>	10 Otautau Museum Annual Book Sale OTAUTAU CATHOLIC PARISH CENTRE 10am - 4pm <b>FREE Nature Workshop 2pm Tennis Courts</b>	11
12	13	14	15 Mum's & Bubs Kathleen Eade DHB Safe Sleeping 12:45-1:45pm Medical Centre Day Room	16 Otautau Museum Annual Book Sale OTAUTAU CATHOLIC PARISH CENTRE 10am - 4pm	17	18 <b>Housie / Bingo WTCC 2pm</b> Southland Locator Beacons Charitable Trust AGM WTCC 7pm
19	20 <b>Notices, events, adverts etc in to the WW for the August Issue</b>	21	22 <b>Soup &amp; Chat 11am Tui Base Camp</b>	23	24	25
26 <b>First Day of Term 3</b>	27	28	29	30	31	1
2	3	4	5	6	7	8

Special thanks to



**SEE INSIDE FOR MORE DETAILS!**  
Want your event here? Let us know at [yourwesternwanderer@gmail.com](mailto:yourwesternwanderer@gmail.com)

**HANDY PHONE NUMBERS**



**EMERGENCY**

**POLICE /FIRE/AMBULANCE: 111**

**MEDICAL CENTRE:** (03) 2266 123

**TUATAPERE POLICE STATION:**  
(03) 2269 020

**TUATAPERE COMMUNITY WORKER:**  
027 757 5983

**HAUROKO VALLEY SCHOOL OFFICE:**  
(03) 2266 753

**WAI AU AREA SCHOOL OFFICE:**  
(03) 2266 285

**TUATAPERE CEMETERY TRUST:**  
(03) 2266 065

**CHAMBERS SERVICE STATION:**  
(03) 2266 654

**TUATAPERE SERVICE STATION:**  
(03) 2266 475

**TUATAPERE FOUR SQUARE:**  
(03) 2266 898

**TUATAPERE OUTDOORS & HARDWARE:**  
(03) 2266 363

**Pink Ribbon Breakfast 2021**



*Coke McCracken*

Warm and toasty in the Waiau Town & Country Club, 44 participants enjoyed a fine meal prepared by Gary and his team, and we were not disappointed!

Margaret Thomas picked up the spot prize. Helen O'Brien and Carmel Barrett were voted best dressed.

After a wonderful speech from Artist, Janet de Wagt about how she coped with her cancer, a couple of silly games and 40 draws of the raffle the proceedings concluded having raised **\$2237** towards Breast Cancer Research.



**A big THANK YOU to our awesome Sponsors**

Chambers Garage, Hungry Hippo, Aparima Tavern, Linrosa Farm, Waiau Valley Shearing, Riverton Pharmacy, Kraken Fishing, Orepuki Beach Cafe, Little Red Caboose Gallery, Tui Base Camp, Neat Cut, Tuatapere Service Station, C O'Brien & Tuatapere Outdoors & Hardware

Another big Thank You to Gary & the team at Waiau Town & Country Club

I would be unable to hold this event without the help of Karen Lord, Lynette Chambers & Lisa McCracken  
Thanks again everyone!



**Sunday 4th July**

Waiau Town & Country Club

**4pm onwards**

Gold Coin Donation Entry

TUATAPERE & DISTRICTS PROMOTIONS INC IS PROUD TO HOST OUR VERY FIRST

**MID-WINTER MUSTER**

**Community Pot Luck Dinner**

EVERYBODY IS WELCOME!

Bring a favourite dish to share!

Enter the Winter Wonderland Theme Decorated Cake Competition!

Special surprise for the kids!

Bouncy Castle!

Free Mulled Wine!

QUERIES? CONTACT PAULA: 027 434 6777



**PLEASE HAVE YOUR ARTICLES, NOTICES, OR UPDATED ADVERTS FOR THE WESTERN WANDERER SENT IN BY**

**20th of July (for August's Issue)**

**SEND TO: [yourwesternwanderer@gmail.com](mailto:yourwesternwanderer@gmail.com)**



We aim to have each issue printed and delivered to your letterbox the first week of each month.



## TUATAPERE AMENITIES TRUST

### 2021 Annual Distributions

The Tuatapere Amenities Trust (the Trust) was established in 1997 as a mitigation outcome to the effects of the Manapouri Power Scheme.

The Trust manages an investment fund endowed to it by the Electricity Corporation of New Zealand (succeeded by Meridian Energy Ltd). The fund, since establishment, has disbursed over \$700,000 and has supported a significant number of projects that directly benefit the community of Tuatapere.

The funds are managed in a way that generates an annual income for supporting the above while protecting the value of the fund to ensure the benefits of it are enduring to the community.

The Trust met on the 2nd of June 2021 to consider applications received for funding of projects to enhance the amenities of the Tuatapere township and immediate surrounds. This year the Trust approved applications with a total value of \$52,700.00.

The recipients of funding were:

- **Tuatapere District Lions Club Charitable Trust**  
\$50,000 towards cost of Ambulance Building
- **Tuatapere Toy Library**  
\$2,700 for Shelving

## SOUTHLAND FOR BEEF + LAMB NZ

### Beef + lamb NZ Southland Farming for Profit Seminar - Building Your Team.

8th July, Winton Bridge Club, from 1pm-5pm

Registrations visit <https://beeflambnz.com/events>

and search for the event or for further information contact **Megan McCall** mmccall@abacusbio.co.nz or phone **027 2076074**

### Beef + Lamb NZ Southland Farming for Profit - Building Blocks for the Future and Succession Plans

27th July, Te Anau, 1pm start. More details to come -

keep an eye out on <https://beeflambnz.com/events>

and search for the event or for further information contact **Megan McCall** mmccall@abacusbio.co.nz or phone **027 2076074**

## COMMUNITY EVENT SIGN GUIDELINES



### PURPOSE:

The community event sign is a Tuatapere & Districts Promotions Inc initiative. It is a place to promote local events that have a community benefit.

Events will be sourced from Western Wanderer, otherwise will be received through email at [yourwesternwanderer@gmail.com](mailto:yourwesternwanderer@gmail.com).

All efforts will be made to accommodate events on the sign board, which may require sharing the event board or a shorter time frame for display.

Promotions Inc will have two people assigned to the event board, thereby covering any event sign changes that may be required.

### LOCAL GROUP NEEDS TO:

- Provide a message within the following parameters:
  - 3 lines with up to 10 Characters per line excluding spaces
  - Includes Date and Time of event
  - Contact person name and phone number will be provided for any queries.

### PROMOTIONS INC WILL:

- Make every effort where practicable to put the event on the board up to min 1 day in advance of the event.
- If there are any issues with putting the event on the board the event person will be contacted.

### CRITERIA:

- An event/celebration within Tuatapere & Districts.
- Community/nationally significant messages.
- Clear message including date/time.
- Enough time given to load message onto board.
- No personally offensive messages will be accepted.
- Community/Voluntary events will take priority over commercial events.

## SOUTHLAND LOCATOR BEACONS/SOUTHLAND LOCATOR BEACONS CHARITABLE TRUST AGM

Southland Locator Beacons and Southland's Locator Beacons Charitable Trust AGM will be held on **Sunday, 18th of July** at the **Waiau Town and Country Club** at **7pm**.

Our guest speaker will be Wayne Marriott from Invercargill.

We are also looking for new trust members, should anyone wish to join a very worth while trust, please get in touch with **John Munro 027 412 2925**

## WE'RE LOOKING FOR REGULAR CONTRIBUTORS!

Are you interested in being a regular contributor of content for the Western Wanderer? We're looking for people who would like to provide a short article/piece of reading for each monthly issue. Drop a note in the mailbox at **18 Orawia Rd**, or email us at [yourwesternwanderer@gmail.com](mailto:yourwesternwanderer@gmail.com)

## SOUP & CHAT (FREE)

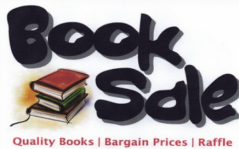
Thursday **22 July** at Tui Base Camp. **11am to 12:30pm**  
See you there! Book (for catering purposes) by calling Keri Potter **027 757 5983**



## OTAUTAU MUSEUM ANNUAL BOOK SALE

**10th & 11th July AND 16th & 17th July**  
10am to 4pm.

At the Otautau Catholic Parish Centre  
(Opposite Western Motors)



## TUATAPERE COMMUNITY SUPPORT WORKER TRUST AGM

**25th August 2021 at 7pm**

The Day Room, Tuatapere Medical Centre.

ALL WELCOME

Keri Potter  
Phone: 0277 575 983  
Medical Centre Room 5 / 69A Orawia Road  
Tuatapere 9620



## NEED A JP?

The following Justices are available by appointment:



### Tuatapere

Keri Potter 027 526 3137  
Donald Egerton 027 432 5407

### Te Waewae Bay

Shirley Whyte 027 504 5220

### Blackmount

Nicky Baker 0276435880

## WESTERN SOUTHLAND WOOLCRAFT GROUP

Spinning, Felt, Weaving, Knitting, Crochet. Other crafts welcome!  
1st Wednesday of the month.  
10am - 3pm. BYO Lunch.  
For details please contact:  
**Helen Todd 022 378 9743**



## TUATAPERE & DISTRICTS LIONS CLUB PROJECT



### SUPER DIRT

Super dirt bags are now weighed so more in each bag!  
**\$8 per bag - ready for your garden!**

Super dirt can be collected from:  
Cracks Yard, Grove Burn Road,  
in the mornings Monday to Friday.  
Weekends by arrangement.

Delivery by arrangement - (but not guaranteed)

Phone Trevor (03) 225 5864 or  
Stephen (03) 226 6817



## TUATAPERE COMMUNITY WORKER

Room 5 Medical Centre  
69A Orawia Road

Monday - Thursday 10am to 3pm  
Keri Potter **027 757 5983**  
Email: [tcworker@xtra.co.nz](mailto:tcworker@xtra.co.nz)



## PICKLEBALL at Clifden Hall

Pickleball is now closed for Winter.  
We'll let you know when we start up again!



## COMMUNITY NOTICEBOARD

### THANK YOU TUATAPERE!

On the 5th November 2020 I was involved in a serious motorbike accident which left me with a TBI (Traumatic Brain Injury).

I spent a week in ICU in an induced coma, 3 weeks in the Neurological Ward in Christchurch Hospital before finally being transferred down to Dunedin to ISIS rehabilitation ward - where I spent three months recovering.

While I was gone the Tuatapere and wider communities rallied around and supported both me and my family. It was an extremely tough time for us and with your love and support made being away a little easier.

Since my release from ISIS, I've been out enjoying life, trying to find my new normal. It has been extremely hard as I was very active and now very restricted by my injury, of what I can and cannot do. The accident has been a huge wake up call for myself and my family of things that are important. I am so very grateful for those who attended the accident, visits in hospital, helping with the farm, checking on the kids and the ongoing visits or a phone call. Without out them the outcome could've been quite different.

It's going to be a long road to recovery, my rehabilitation team, family and carer have been so supportive with getting me on the right track. Thank you doesn't really seem enough; we are so very lucky that we live in a small community where nothing is a problem and people rally round to help those in need.

We are forever grateful.

Darryn, Sandy, Keely, Lucas and Amyee Gutsell.

### SALVATION ARMY FAMILY STORE TRUCK

The Salvation Army Family Store Truck will come out and collect large amounts of your pre-loved furniture & other household items. This service is free.  
Please call the store to organise your visit on **03 214 5380**



**Family Store**

Donate. Buy. Help.



[familystore.org.nz](http://familystore.org.nz)

### TUATAPERE HEALTH & GIFT SHOP - Riverton Pharmacy

We now have two courier drops for prescriptions for our Tuatapere customers:  
**1:00pm and 4:45pm.**

The Health & Gift Shop is open from 12:30pm - 5:30pm.

If we can help in any other way, please contact Riverton Pharmacy **(03) 234 8515**



### COUNTRY CORNER CRAFTS

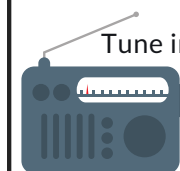
Come in and browse and see what we have to offer. Hats, scarves, children's knitwear, cards, jewellery, woodware, sewing, jams, pickles, sauces, etc.

Tuatapere souvenirs "On Natures Edge" logo are always available.

Is anyone interested in joining to sell their crafts? You are more than welcome to contact us.

Want to volunteer your time & work in the Craft Centre - let us know! It's a great way to meet people! If you wish to view the shop and it is closed, please ring the ladies below to open it for you.

**Louise Greber (03) 668 6001 or  
Lyla Sherriff (03) 226 6187**



Tune into Tuatapere's very own Radio Station

**88.2 FM - Tui FM!**

Hits of the 80's & 90's and today's current music!



## WAIAU MEMORIAL LIBRARY

### Library Hours: Fridays

10:00am - 11:30am

2:30pm - 4:00pm

7:00pm - 8:00pm

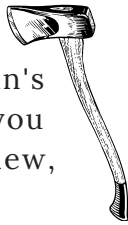


The Library now has Wi-Fi. Available free to all library members. Just ask one of our friendly volunteers to help you set up your device.

## TUATAPERE BUSHMAN'S MUSEUM

Orawia Road. If the Bushman's Museum is not open when you have visitors who wish to view, you can contact:

Lindsay Faulkner (03) 226 6650 to arrange a suitable time.



## TUATAPERE ENVELOPES

Envelopes printed with the "Tuatapere on Nature's Edge"

Logo can be purchased at Country Corner Craft Shop  
1A Orawia Road

Cost \$3.00 per 10



## TUATAPERE MAINLY MUSIC

A pre-school music and movement-based playgroup.

Mondays during the school term at the Tuatapere Presbyterian Church Hall.

Music session starts at 10am followed by a time of morning tea and play. \$2 per family.

Morning tea is provided for all.

New families welcome!

Find us on Facebook:

"Tuatapere Mainly Music"



mainly music  
EST. 1999

For more information contact Heidi 022 315 3326

## Get your car washed, dried and windows cleaned - Price arranged on request!

Contact: Rex Hibbs  
Flat 1/26 Orawia Rd, Tuatapere

## COMMUNITY NOTICEBOARD

## TARGET SHOOTING SOUTHLAND

Have you thought of small bore rifle shooting which is known in Southland as target shooting?



Nightcaps meet on a Monday night.

Contact: Raeleen Sinclair (03) 225 7834

Tuatapere meet on a Wednesday night.

Contact: Kevin Daly (03) 234 5162 or

Quinton Erskine (03) 226 6969

<https://www.sporty.co.nz/targetshootingsouthland>

## TUATAPERE SCOUTS

Are you and your family looking for something that will foster personal development, create a sense of community and at the same time challenge you or a school age member of your family? Have you thought of joining Scouts?



At Scouts we have Kea's for children aged 5-7 yrs, Cubs for children aged 7- 9 1/2, Scouts for 9 1/2 -15 yrs.

We also have a need for leaders so we can deliver our programmes effectively. Please contact:

Leader Anne-Marie 027 688 5828

Group Leader Quinton 027 223 4842 or (03) 226 6969

### Please Note:

Next term we will be changing our programme to a **Monday afternoon/night**. First afternoon/night will be **10th May**.

## TUATAPERE PLAYGROUP

23B Orawia Road. **Friday Playgroup 9am - 12pm**

All parents and children welcome!

Children's morning tea is a packed lunchbox from home at Playgroup (as opposed to a shared morning tea).

Any queries please contact:

Gemma Bennett 022 040 3368 Alice Harris 027 270 0363

## CLIFDEN PLAYGROUP

45 Otahu Eastern Bush Road.

**Every Wednesday (during School Term) 9:30am - 12:30pm.**

All mothers and children welcome.

Bring packed lunchbox for your child's morning tea.

Any queries to: Lynley Patterson 027 429 7436

## TUATAPERE TOY LIBRARY

Tuatapere Toy Library has been a toy swap/hire service provided to the young families of Tuatapere and surrounding since 1989. The purpose is to create opportunities for the little people of our community to have accessibility to toys. A small contribution of an annual membership allows families to join the group and have access to the toys.

For more information or questions please text or ring Nathalie Pahl on **027 4759 075**



## WAI AU SQUASH CLUB

Squash is a great way to get a bit of exercise over the winter months, have some fun and meet some new people.

Women's Interclub - Tuesday evening.

Men's Interclub - Thursday evening.

For more info please contact:

Nic Mitchell **021 815 531** or

Sam Egerton **027 2505 477**



## SENIOR CITIZENS

Senior Citizens is a group of over 60s that meet every **Friday afternoon at 1pm** at the rooms behind the RSA Hall.

We are always looking for new members so if you would like a fun afternoon playing bowls, cards or just catching up with friends, come and join the group.

Contact: Olive Bennett Ph **(03) 2266 477**

## WAI AU VALLEY PRESBYTERIAN CHURCH

Services for all ages! Every Sunday at 10.30am.

Tuatapere Presbyterian Church, Main Street, Tuatapere. All welcome to join us.

For information please contact:

Chris Howden Session Clerk 021 477 999

## TUATAPERE AMBULANCE

### Did YOU Know?

The Tuatapere Ambulance is a funded service by the Tuatapere Lions Club, for the residents of Tuatapere & Districts.

Should you receive an account for this service from St John, please forward it immediately to:

**The Treasurer**

**Tuatapere Lions Club**

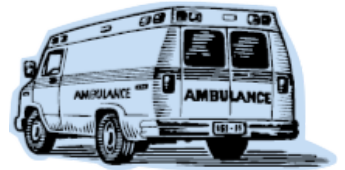
**PO Box 47**

**Tuatapere**

Sometimes we experience difficulty in receiving the invoices for YOUR trip - so PLEASE do forward them on to us.

Thank you!

**Tuatapere Lions Club Charitable Trust  
Ambulance Committee**



## WESTERN SOUTHLAND HEALTH SHUTTLE

The Western Southland Health Shuttle Service travels from Otautau, Ohai, Nightcaps, Tuatapere, Riverton - covering all of Western Southland. We also connect with the Invercargill-Dunedin shuttle.

The Western Southland Health Shuttle operates Monday - Friday (excluding Public Holidays).

Bookings are required by 3pm the day prior to transport.

**Ph: 0800 103 046 to book.**

Please book as soon as you receive your appointment.

## TUATAPERE VOLUNTEER FIRE BRIGADE

We're on the lookout for members to join this rewarding organization. We are looking for persons who are, ideally, available throughout the day.

If you think that you would like to try this (sometimes lifelong) commitment, then please feel free to come and try it!

We train on Tuesday nights at 7:30pm during daylight saving and 7pm through the winter months.

We look forward to meeting with you.



# FREE Nature Workshop

Hi, my name is Karina. I am 18 years old. I am the oldest sibling of the Survival Family. Our family comes from Austria and has been teaching Wilderness Survival and Nature Connection for 30 years. We love being outdoors in the elements and running WILD!

Our programmes and workshops teach Nature Awareness, Wilderness Survival and the Primitive Skills that our ancient ancestors used every day to survive - such as lighting fires, building shelter, navigation, tracking animals, foraging, making cordage and discovering the art of camouflage. I grew up spending a lot of time in nature and in our workshops and classes. I went through the rite of passage to become a nature connection teacher. We recently moved to Tuatapere and I would like to spend some time with people who are inspired by nature, like being outdoors and are keen to learn some basic primitive skills.

On the **10th of July** I will offer a free workshop. It will be an afternoon of fun, adventure and discovering new skills for the whole family. Enhance your knowledge, confidence and connection to nature. **We will meet at the Waiau Area School Tennis Courts (cnr of Orawia Rd & Birch St) at 2pm.** From there we will head down to the river. We will set up our base camp for the afternoon on the riverbank. We will then tune our senses and focus through some nature awareness games. I will give you an introduction to fire making, including fire by friction. We will use the fire to craft some primitive tools. Knife safety and general wilderness safety will also be part of our discussions.



Bring drinking water and some snacks if you like.

The workshop will finish at 5pm.

In case of heavy rain, we will find another date for the workshop.

I will provide all the materials. To have enough materials for everybody please register by calling me on **027 301 2102**

I am looking forward to seeing you there!

## Waiau Town & Country Club

**Meals (homemade goodness) available Thurs, Fri, Sat & Sun evenings from 4pm to 9pm.**

Family Friendly | Happy to cater for dietary requirements. Please pre-book for groups of 8 or more.

### Club Opening Hours:

**Mon - Thurs 4pm till close.**

**Fri 3pm - close.**

**Sat Noon - close.**

**Sun 3pm - close.**

**Book now for a mid-winter functions/birthdays etc**

We can cater! Just call **03 226 6489** to book. Ask for Gary to discuss your options.

### What's on at the Club:

**\*Mid-Winter Muster** - Sunday 4th July  
4pm onwards - Community Pot Luck Dinner.

**\*STEAK NIGHT, STEAK NIGHT** - every Thursday night - only \$25 for a delicious steak meal.

**\*Housie / Bingo** - Sunday 18th July - 2pm  
Raffle Table, members please bring something.

**\*Wild Food Event** - Saturday 14th August  
Starts at 4.30pm. Judging at 6pm.  
Everyone welcome to enter - come and sample the food! Chocolate Wheel & Bouncy Castle on the day.

**\*Bouncy Castle** - is at the Club on Thurs, Fri, Sat, Sun nights during July & August. Bring the kids for a run around, while you enjoy dinner and a drink.

**\* MEMBERS DRAW & RAFFLES**  
drawn every Friday night! Approx. 7.30-8.30pm.

**Keep an eye on our Facebook Page for more details on upcoming events**

**Annual membership/subscription**  
Annual membership is \$50 or \$30 for pensioners.  
Want to become a member, pop into the club & sign up!  
Or email or call us.

Phone: **03 22 66 489** | Address: 41 King St Tuatapere  
Email: [waiautcc@gmail.com](mailto:waiautcc@gmail.com) | Facebook: [facebook.com/waiautcc](https://www.facebook.com/waiautcc)  
| Courtesy Van Available |

**We look forward to seeing you!**



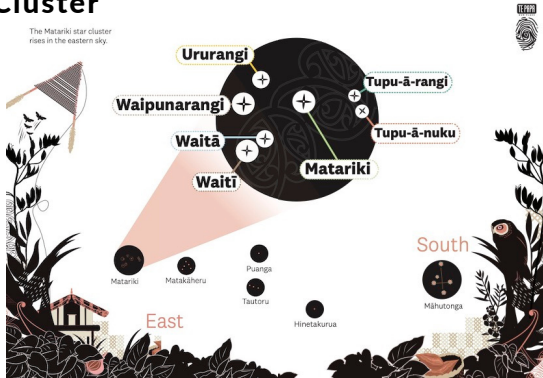
# Matariki

**Ko Matariki kei runga, ko te tohu tēnā o te tau!**  
*Matariki is up, it's the sign of the year!*

Matariki is the Māori name for the star cluster known as Pleiades. The full name is "Ngā mata a te Ariki Tawhirimātea - the eyes of the God Tawhirimātea". Matariki signals the Māori New Year. It is a time of renewal and celebration in New Zealand that begins with the rising of the Matariki star cluster.

## The Matariki Star Cluster

The two meanings of Matariki both refer to stars: mata ariki (eyes of god) and mata riki (little eyes).



## When is Matariki?

Matariki is a star cluster which appears in the night sky during mid-winter. According to the Maramataka (Māori lunar calendar) the reappearance of Matariki brings the old lunar year to a close and marks the beginning of the new year. Hence, Matariki is associated with the Māori New Year.

**FOR SALE**  
Good Quality Hay Bales **\$10**  
Ph: Wayne 027 457 6350

**Shearing**  
magazine  
**Des Williams (editor)**  
Tel 07 839 2891 : Mob 0274 833 465  
Email : shearingmag@xtra.co.nz  
*Member NZ Guild of Agricultural Journalists and Communicators (Inc)*  
**LAST SIDE PUBLISHING LTD**  
PO Box 102, Hamilton 3240, New Zealand

*Shirley Whyte*  
Your local real estate specialist living & working in Western Southland

for: Friendly service, reliability, sound local knowledge in Western Southland, Te Anau & Stewart Island

**Harcourts**   
027 504 5220 03 214 4080  
shirley@harcourtsimv.co.nz  
www.harcourts.co.nz

**Sewing and Mending Services Available**  
Experienced machinist offering fast, reliable service with very reasonable rates.  
I will mend/make anything from zip replacements to curtain making - just ask!  
Free quotes and pick-up delivery service within Tuatapere.

Contact **Deborah**  
(03) 226 6783 or 021 0305 667

Kids, Create Your Own Designs  
for the Seven Matariki Stars

# Tuatapere Freight

LOCALLY OWNED & OPERATED

RUNS MONDAY TO FRIDAY  
WEEKENDS BY ARRANGEMENT

**Phone Brandon**  
027 436 4360



IN AND AROUND TUATAPERE

## Tuatapere District Lions Hay Day Results 2021



**Baleage** 1st Alister Buchanan  
2nd Darryl Bevin  
3rd Lindsay Wilson  
4th Tom Cruise  
5th Hayden Smidt

**Pit Silage** 1st Gray Wilson  
2nd Te Wae Wae Dairies  
3rd Jason Bennett

**Large Lucerne Whole Crop** Peter Cassell  
Richard Greer

**Large Hay** 1st Bruce Howden  
2nd James Ridley  
3rd Phil Sellwood  
4th Longview Pastures

**Lucerne Conventional** 1st Arnie Gray  
2nd Chris McIntosh

**Conventional Hay** 1st Zeke Erskine  
2nd Gavin Devery  
3rd Phillip Erskine  
4th Stephen Crack

**Best Kale** 1st Mathew McLellan  
2nd Minessa Erskine

**Fodder Beet** 1st Rohan Knowler 13kg  
2nd Drew Charters

**Best Swede** 1st Rohan Knowler 14kg  
2nd John Knowler



**Raffles** Jim Beam No. 34 Les Kollat  
Firewood No. 63 Rabco

Baleage 273 bales @\$85.00 average  
Conventional Hay @\$14.00 per bale  
Conventional Lucerne @\$19.00 per bale  
Round Hay @\$65.00 per bale

## Riverton Electrical Ltd

The Bright Green Sparks  
Industrial, Commercial, Residential  
Member of Sustainable Electricity Assoc. of NZ Inc (SEANZ)

0274327215

Email: rivertonelectrical@gmail.com  
Address: PO Box 10, Riverton 9847

Proud to support Western Southland - keeping it local!

Call today to discuss your energy needs  
for the home or business



**Specialists in:**  
Renewable Energy  
Energy audits  
Energy management  
Home ventilation  
Heat Transfer  
Dairy maintenance  
Effluent systems (Electrical)  
Preventative maintenance  
Freeview TV

## RAW FARM HOMEKILL

Wayne & Rachel Saunders 027 457 6350  
Qualified Butcher

rawfarming@yahoo.co.nz 82 Clifden Highway  
Tuatapere



Cut up the way you want

Beef  
Pork  
Sheep  
Venison

Other game meats  
Traditional Smallgoods



# Clifden Rural Women

*Lynley White, President*



I will briefly share some of our activities and successes for Clifden Rural Women. In November I was privileged to attend the RWNZ AGM and NZ Women Business Awards in Wellington. This year again we have presented about 60 Thesaurus Dictionaries to the pupils at our 5 local schools as it is still important for children to be able to spell correctly. During the school holidays we held a scone baking class to teach new skills and this was wonderfully successful as many junior bakers entered their scones in the Waiau A&P Show. The Waiau Show was supported by our members helping with judging and writing up the certificates.

Donations to needs in our area have been used to fund equipment for the Ohai Medical Centre. We have sponsored a trap on the Hump Ridge walking track. We supported the Community event that the Clifden Play Group organized with the Movie Night at the Tuatapere Domain, and have recently donated money for the key based system for the coming Toy Library. CRW have donated a picnic table for the Clifden Bridge Area and have donated money to Hauroko Valley Primary School for the Arbour Day planting on the South side of the River. In April for ACWW (Associated Country Women of the World) we visited the Otautau Arboretum viewing the Autumn colouring of our RW Maple Avenue and enjoyed the walking tracks through this amazing area. Maple Avenue was planted in 2013 by Western Southland RWNZ and sadly some have adhered to wind damage so we are supporting the pruning/tidy-up of our trees.

We continue to support the new born babies with knitted singlets and books being distributed through the plunket nurse. During the year we supported Rural Support with raffles at the "Brunch For Us" at the Orawia Community Centre for the local farmers. At the moment we are donating \$3,000 to the Tuatapere Lions Club for the purpose of the Ambulance Shed Interior Shelving.

Our 90th Celebration for Clifden RW was enjoyed by our members in Te Anau sailing on the beautiful 86 year old restored sailing boat "Faith" and walking to Hidden Lake. Talk is underway for us to have an official cake cutting ceremony at Clifden later in the year inviting past members. Five of our members attended the RW forestry bus trip. We visited the AB Lime Works viewing their native nursery, sighting the Winton Landfall & learning how it is environmentally and carefully managed, before heading to Dipton. We enjoyed seeing our Castledowns Wetlands and our Forest, which SLD WDFP had the vision to plant 70 years ago, and today we are reaping those benefits. We are now wearing with pride our new navy caps with our embroidered Clifden RW logo, no longer getting sunburnt on these outings. The visit of Dora was a timely visit to our area as banks are closing, cheques being phased out. The Bus was supported by many of our members.

This coming school holidays we hope to continue with some Junior baking classes for pizza and cheese roll making. During the year we have supported 6 families involved in accidents or medical issues with baking, meals, coincidentally 4 of these on the same road. We have welcomed 3 more members this year. Our latest member is a 3rd generation RW. **If you are interested in joining our local Branch, we would love to hear from you.**



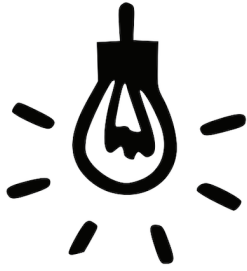
## TUATAPERE HANDYMAN SERVICES

**Barry Bennett**  
**(03) 226 6730**

- **Painting - Interior/Exterior**
- **Waterblasting**
- **Carpet & Upholstery Cleaning**
- **Spider & Fly Spraying**
- **General Repair Work**
- **Lawnmowing**
- **Hedge Trimming**
- **Weeding**







# Registered **ELECTRICIAN**

For all electrical work  
*No job to small*  
A/Hours service available

**Jay Brownlee**  
8 Carlyle Street, Tuatapere 9620  
A/H 03 226 6673  
Mob 027 4965 863  
sparkieintuatapere@gmail.com

## Tuatapere Lions Club



*John Knowler*

Greetings once again from the Tuatapere Lions Club.  
The beginning of the Winter weather wise - so far so good.  
Our thoughts have been with the mid Canterbury residents.

The club has been busy of late - our 29th annual hay drive on Friday June 11. Another excellent result. A fine day and an excellent venue. Thanks Rabco. And a record number of entries in all classes. The club is very appreciative of the support of many companies and individuals for the prizes etc. farmers for the hay, truck owners and drivers, judges, ladies who provide the food, the two Kelvins as auctioneers and those responsible for the trade displays. The club also wishes to thank the members of its hay committee who have met regularly for the past few months to ensure it's smooth running. A report will be printed when all sales monies and accounts have been tidied up.

The new ambulance shed is finished and awaits a fit out for the inside. The club wishes to thank the ambulance committee for all the time they have put into solving any problems connected with the new building. We want to also thank the trades people involved. Mention must be made of the extremely generous donation by the Tuatapere Amenities Trust of \$50,000 towards the project.

One of the services that the Lions Club provides for the town is keeping the recycling centre tidy. Over the past 5 or so years the workload for Jay (our local electrician) has increased and the club was being paid a minimal amount for the work. A recent meeting of all parties has seen a slight increase in the amount paid to our club by Bond Contract and a general improvement in the tidiness of the area. Please residents, The Lions Club does not want to see this facility lost to the town.

Recent donations have been to the Waiau Area School for travel to Roxburgh. Thanks to the pupils who helped out on the BBQ on hay day.

It was our Annual General Meeting on the 19th June. Lion James Harris vacated the chair to Jay Brownlee. A tribute must be paid to Adrienne for supporting Jimmy. Nigel Fowle - 1st VP; Shirley Crack - 2nd VP; Shawn Kollat 3rd VP; Maurice Green -Secretary; Adam Daley - Treasurer.

12 Thank you.

**MILLARS**  
- PLUMBING  
- GAS FITTING  
- DRAINLAYING  
- LICENSED BUILDER  
Master Plumbers  
Ph 027 4340 705 or 03 225 8567

**Aaron Cranston Building Ltd**  
027 252 7933

- Renovations
- Extensions
- New Builds
- Sheds/Farm buildings
- Decks
- Pre-purchase house Inspections

*Call us for any building requirements*  
Ph 027 252 7933 email: aaroncbltd@gmail.com



*George Harpur, SDC Councillor, Waiau Aparima Ward*

Welcome to mid winter and so far six months of maybes. On the local scene we are still working on a combined solution for the beautification of the main street area and the old railway station which has been a festering sore for the community for many years. Who will finance the project, who will lead the project and who, if anyone, locally will benefit from any forward development? I am all for having a presentable main street, along with the associated well manicured gardens and local parks, bush walks and reserves. All great for our visitors but we must be mindful of the current condition of the remainder of, not only our town but of the whole future of rural New Zealand as to who but a handful of mainly older residents will actually be living in the rural regions in the years to come. I see Tuatapere as a future service centre for the local region as well as a tourist stop over for the local adventurer. We may still need petrol, medical, meeting places, schools and food centres. However derelict shops, buildings and untidy dwellings do not add to the attractability of our once proud and vibrant town. With regard to the main street or the Lions Park playground just to south of the landmark railway station we have a small and rather dangerous playground as to its location to the state highway, your community board is currently looking to remove this facility as it is seldom used and if retained requires considerable funding to upgrade, funding which we can transfer to other infrastructure. Staying with parks and reserves we have some irresponsible person(s) who seem to get a kick out of tearing up turf at Thornbury, Orepuki, McCracken's Rest and our own well kept domain. Come on people out there you are paying to get this resulting mess cleaned up so the lawnmower can get back to work. Some of you will know who is responsible so please do your community thing and report it to either SDC on 0800 732 732 or the local police.

On a more proactive note I thank the Tuatapere Lions Club, their sponsors and volunteers who went to work for many days and presented yet another successful hay drive for the benefit of many of our regional facilities. Long may they have the mutual support of the wider community to continue to run this event?

Cheers to all and stay warm.



Phone: Anita Green 027 506 2418

Tuesday 9-5pm, Thursday 10-8pm, Friday 10-5pm - Appointments are encouraged.

## CHAMBERS REPAIR SERVICE

**45 Half Mile Road, Tuatapere**

**Ph: (03) 226 6654**

- 24 hour Self Service Fuel
- Full Mechanical Workshop
- Agents for Wide Span Garage
- NZ Post Centre
- Your Local Fish & Game Agent



**Duck Shooting Season**

Duck Licences Available



Cost: Adult \$98, Junior \$23, Child \$4

**Daily Limit per day**

**(after Opening Weekend)**

10 Mallard, 6 Paradise, 5 Black Swan

Day Licences now available!

**PLATE**  
METER SERVICES  
TROUGH CLEANING SERVICES

PASTURE METER READING THAT'S QUICKER AND EASIER, WITH AT THE GATE REPORTS

- Specialist in quality pasture meter reading with advanced sensor technology
- Provide 200 measurements per second or 18,500 readings over a single 500m pass
- Provides a fully integrated electronic support system
- Provides a secure web-based storage of information with easy access
- Prompt generated feed wedges for rapid decision making and seasonal comparisons
- Generate reports at the gate, supplying valuable pasture cover data and comparable results every time
- Improve health & increase animal hydration
- Enhance production & improve water quality
- Reduce bacterial/algae contamination of trough water

**CLEAN TROUGH WATER MEANS IMPROVED LIVESTOCK HEALTH**

Now 2 bikes available for pasture metering



Brett George • P 027 351 3408   
E [platemeterservices@gmail.com](mailto:platemeterservices@gmail.com)

# Early History of Ōtautau Book Project

Suzie Best

Currently, help is needed from the community to finish the above book. I am also sharing this with the Tuatapere community as well, considering many of the early families from Ōtautau made their way over to the Waiau District when it was opened up, much later on.

Several years ago, I started on researching, collating and writing material for the above book (now books), after working on town history and finding little on early Ōtautau. It soon became evident information was sparse and it was not well referenced. On my attempting to get evidence to back up all the previously reported early history of the town, I uncovered something quite different. So, rather than the town 'growing up' in the 1860's as was written, I found that when the surveyors came here in 1872, there was only 1 property recorded on their Township Survey that had been built on. This was on land in the Aparima Hundred, which held the Ōtautau Accommodation House and stables. These were interestingly built and run in the early days by the Cassels, Small and Tilyard families, descendants of whom still live in the Western Southland district today.

It was always my hope that the 1872 Survey of Ōtautau Township would be commemorated, so my thanks to the Ōtautau Promotions Committee who are currently organizing that. But this book project now needs to be complete in time for a 2022 event. The first book is now going to be purely on the early history of the Township of Ōtautau itself, with subsequent books due to also be released later, dealing with the early history of the whole district. All my time doing this project is donated and I've also arranged for any profits made on the eventual sale of the book, to go back to those historical groups in the district who contributed, as it is purely a community project. So help from the community is appreciated!

On finding that in 1879, (pre-Railway), only nine occupied houses were in the township, after thousands of hours cross-checking Government records, I have now narrowed the earliest inhabitants of the Ōtautau Township as being from these following families, listed below. So can anyone who is a descendant or who can help with family details or early photos, please get in contact. Let's all work together to make this book happen:  
**Campbell; Cassels; Dodds; Lawson; Lynch;(possibly) McDonald; McIvor; Newsome; Price; Quin; Small; Smith; Tilyard; Walker.** These families were the earliest settlers in the township that I found, who I now need photos or more info for. If you can help, please contact Suzie - email: [riverstream@xtra.co.nz](mailto:riverstream@xtra.co.nz) or phone: **027 211 4675**.

Facebook Page <https://www.facebook.com/TaleOfATown/>

I am needing more family information and also photos of our first residents, or if you have any early town photos, etc., or early invoices from your ancestors, that you are prepared to share to help tell our town's story, this would be fabulous. I would also like to find others with computer skills who can help with research, both online and searching through other early historical documents and early writings of the area. Please let me know if you can help at all.

**WANTED**  
**Casual Dairy Farm Worker Pahia**  
180 cows 24 bale hb shed  
Super clean shed  
No experience needed - happy to train  
right person!  
Start August 2021  
No housing available  
Phone Tony (03) 234 5154

**FULL TIME CALF REARER**

**Where:**   
Alister & Jo Sanford,  
692 Clifden Blackmount Road

**When:**  
Starting approximately  
10th August 2021 - 30th October 2021


Experience is preferable however not essential as you will be working alongside one other team member. We will provide you with a safe, fun and friendly work environment. In return we expect reliability, good attitude to learning and working. We have a known history with treating staff well and paying fairly.

Please contact **Jo 027 295 029**

For all your fencing requirements  
**WESTERN FENCING**  
SHEEP | DAIRY | DEER



Call BEVAN 0277 413 213



**BEN MCMASTER BUILDING**

Ph: 027 202 7955  
[benmcmaster@live.com](mailto:benmcmaster@live.com)

- Licensed Building Practitioner
- Sheds, renovations & new homes
- Based in Western Southland

*You dream it, we'll build it*

ESSENTIAL OILS 100% PURE GIFTS OF NATURE  
Florals Trees Plants Herbs Spices Citrus

To Learn More, phone or text your local Wellness Advocate  
Carol Erskine Papatotara 0274 599 654







**Rabco Ag Ltd** – 021 362 766 – admin@rabco.nz  
Agricultural Contracting Specialists - Western Southland



**Full silage  
& baling  
service**



**Cultivation – including Direct Drill & Precision Drill**



**Effluent – Excavators - Hedgetrimming**





The coming months are shaping up to be an exciting time for Riverton Community Arts Centre.

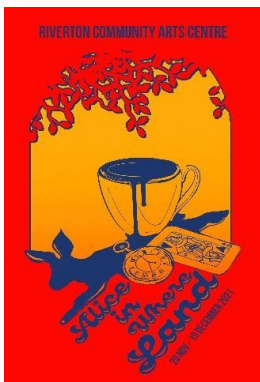
Our first community pop-up exhibition is being held on **Sunday 4th July**. This is a community exhibition, meaning that all artists are invited to submit work for exhibition and sale. If you wish to submit work, please get in touch with the arts centre at [info@rivertonarts.nz](mailto:info@rivertonarts.nz)

The Pop-up exhibition 2nd time around – secondhand paintings and prints, is scheduled for **July 9th – 12th**. There are plenty of treasures on offer, including limited edition prints from Peter Beadle and the original canvas from the Riverton sound shell carnival.

We have plenty of availability for pop-up exhibitions throughout the winter months. Pop-up exhibitions – small exhibitions that run for a few days only – are a great way to showcase your or your group’s artwork and gain experience putting together an exhibition. If you are interested in running a pop-up exhibition, please contact the arts centre at [info@rivertonarts.nz](mailto:info@rivertonarts.nz)




The planning for our Steampunk community exhibition is also well underway. The folks at Riverton Steampunk Emporia are hard at work creating these two beautiful dragonflies, and we are excited to see what else gets created for the exhibition. Entry forms and further details can be found on our website.



Further afield, our *Alice in Where-land* community exhibition is scheduled for 20 Nov - 19 December 2021. This community exhibition focuses on mental health and how fiction can depict the challenges and disorientation of the current era. All artistic media are welcome to exhibit. Entry forms can be found on our website.

**Riverton Community Arts Centre**  
 Address: 149 Palmerston Street, Riverton  
 Website: [www.rivertonarts.org.nz](http://www.rivertonarts.org.nz)  
 Email: [info@rivertonarts.nz](mailto:info@rivertonarts.nz)  
 Facebook: **Riverton Community Arts Centre**



**DAGWOOD DAGGING**


*Available now to all new and existing customers for all your crutching requirements.*

*3 Stand or Single trailer available 7 days a week, wet or dry.*

*No job too big or too small.*

Competitive rates

**Jeff Chambers**  
027 3042 241



**Southland Community Law Centre**  
 5 Tay Street, Invercargill  
 Phone: (03) 214 3180 Fax: (03) 214 3170  
 Freephone: 0800 550 800  
 (outside Invercargill city only)

**Free Legal Information & Advice for the Community of Southland**





## Chocolate Cheesecake Brownies

These brownies are great for afternoon tea or you can have it for a dessert served with a scoop of ice cream.

### Ingredients for the Cheesecake Mixture

- 170g cream cheese
- 1 egg yolk
- 50g sugar
- ½ teaspoon vanilla extract

### Ingredients for the Brownie Mixture:

- 115g butter, chopped
- 55g chopped dark chocolate
- 200g sugar
- 2 eggs, lightly beaten
- ½ teaspoon vanilla extract
- 95g flour
- Pinch of salt
- 6 extra pieces of dark chocolate cut in half

### Method

Heat the oven to 180°C.  
Grease a 12 hole muffin tin and line the bases with circles cut from baking paper.

Make the cheesecake mixture first. Using an electric mixer beat the sugar and cream cheese until creamy and smooth. Beat in the egg yolk and vanilla until combined. Set aside.



For the brownie, put the butter into a small pot and heat until just melted. Add the chocolate and stir until three quarters melted. Remove from heat and stir until completely melted.

Mix the sugar, beaten eggs and vanilla. Sift in the flour and salt and gently whisk in until just combined.

Scrape the brownie mixture into a jug, then pour into the muffin tin until each one is just over half full. Place 2 teaspoons of the cheesecake mixture into the centre of each one. Push in a half piece of dark chocolate.

Bake for 11 to 14 minutes or until edges come away from the tin and the centres are set. Leave in the tin until completely cool. Lift out and remove paper bases.

**HM HARRY'S**  
MACHINES  
EARTHWORKS  
027 304 3714

\* 13 Tonne Digger \* 5.5 Tonne Digger \* 2.7 Tonne Digger- dry hire or operated  
\* Tip Truck \* Bob Cat \* Augers \* Post Driver \* Tree Saw & Hedge Trimmer

\* Tree Trimming \* Post Driving \* Fencing \* Cleaning of Wintering Sheds \* Site Clearance \* Cartage \* Graveling \* Lane Maintenance \* General Earthworks

For all enquiries and bookings please contact Lance or Alice Harris  
Lance: 027 304 3714  
Alice: 027 270 0363  
Email: lanceharris533@gmail.com  
Check us out on facebook- Harry's Machines

**MOUNTAINS EDGE CABINS MONOWAI**

Mountains Edge Cabins

www.mountainedgecabins.com  
Email: mountainedgecabins@gmail.com

Hunting, Fishing, Mountain Biking,  
Kayaking & Tramping  
Cabin Accommodation

**12 Cabins**  
**Double and Single Available**  
**\$35.00 per person per night**

Eftpos available  
Full Kitchen Facilities, Showers, Toilets, Playground  
& the Tennis Courts right across the road!

We are 'pet friendly'

75 Turbine Drive, Monowai. Ph. 03 225 8267

**MR STEEL**  
TUATAPERE  
PH: 027 276 6816  
MALCOLM

**For all your engineering,  
steel fabrication and repair needs!**

**FORDE SHEARING LIMITED**

Available for all new and existing clients

For all your shearing and  
crutching requirements

Please phone Darin or Julie Forde  
(03) 235 8853  
027 229 7760



*Continued from last issue ...*

## Tremendous Changes

Another old resident, Mr William Buchanan, came to Tuatapere about 1920, in the height of the sawmilling era, as manager for Birch and Co. No man knows more about the timber industry than he does. He started working at a sawmill when he was 11 for 1/6d a day and, by the time he was 14, he was driving a hauler for 3/6d a day, doubling his pay and more in less than three years.

As in farming, so in sawmilling, there have been tremendous changes in the methods of work. At one time a mill would have about 300 or 400 pounds worth of gear in the bush. Today, the mill in which Mr Buchanan is interested has equipment worth about 16,000 pounds just for getting out the logs, and more men are employed too. Where before a horse was used in the bush for getting out the logs, today there is the high lead, first used in the district by Birch and Co; that is to say the logs are brought in by a high overhead wire.

Sawmilling is still a flourishing industry in the Tuatapere district and is likely to be so for many years to come, in spite of predictions that another 10 years will see the forests cut out. Roy Campbell, who operates a small sawmill of his own, with an Invercargill partner, laughs at any suggestion that the end is in sight. A young man and a member of the celebrated Tuatapere Pipe Band, as well as a returned soldier from the last war, Roy is one of many young men in Tuatapere who are reaping the harvest of prosperity, the seeds of which were sown by the hard work of their fathers. In line with his generation he is bringing modern methods to bear in his industry with remarkably good results. Quite recently he chartered an aircraft to survey the forest stand in back country and he saw enough on his trip there to convince him that there were still vast untapped reserves of native timber-enough that he saw to last another 40 or 50 years at the present rate of milling, and probably a great deal more that he did not see.

Ian Buchanan, who manages a box milling factory and another young man with a family growing up in Tuatapere, also sees no end to the timber that is available in his particular stretch of forest. Like his father, William Buchanan, he has grown up in the timber industry and feels confident that timber will be one of the mainstays of Tuatapere's economy for many years to come. For the last three years Ian has been president of the energetic RSA, which is organising the celebration for next Saturday. He finds time to interest himself in much of the social activities of the district, which has brought him and many others around him to prosperity.

*To be continued next issue ...*

# Tui Base Camp



**Open from 8:30am  
every day!**

## Upcoming Events

- ★ **Sunday Pool - 2pm every week  
(guaranteed \$100 first place)**
- ★ **Every Thursday Happy hour 5.30-6.30pm  
& Free Pool all day**
- ★ **Sept 4th - Justin Funk Monkey!**

Due to popularity we have expanded our Friday night curries to including it every day on our menus, also with a vegetarian option! We have also had a number of other changes so come and check it out.

### **For all of your dine in and takeaway requirements including:**

- In-house roasted Amore Coffee
- In-house made pies, sausage rolls, cheese rolls
- Range of breakfast options
- Packed lunches
- Catering

**Phone: (03) 226 6250**

[www.tuibasecamp.co.nz](http://www.tuibasecamp.co.nz)





# MID-WINTER CHRISTMAS DEALS



**Not Stocked**  
\$12.99 EACH

Jim Beam / CC  
4.8% 440ml 4pk cans & 7% 355ml 4pk cans (inc zero) cans



**Not Stocked**  
\$22.99 EACH

Cruiser  
12pk can range



**Not Stocked**  
\$22.99 EACH

ODD Company  
10pk can range



**Not Stocked**  
\$22.99 EACH

Woodstock  
250ml 7% 12pk cans (inc zero / ex raspberry)



**Not Stocked**  
\$24.99 EACH

Part Time Rangers  
Jack Daniels 4.8% 330ml 10pk can ranges (inc no sugar)



**Not Stocked**  
\$24.99 EACH

Smirnoff Ice Double Black  
7% 12pk can range (ex guarana)



**Not Stocked**  
\$23.99 EACH

Clean Collective  
5% 250ml 12pk cans



**Not Stocked**  
\$26.99 EACH

Long White  
10pk bottle range



**Not Stocked**  
\$35.99 EACH

Jim Beam / Canadian Club  
18pk 330ml cans



**Not Stocked**  
\$9.99 EACH

Jacobs Creek (ex Sparkling range) Montana Classic ranges



**Not Stocked**  
\$15.99 EACH

Brown Brothers  
Moscato range



**Not Stocked**  
\$15.99 EACH

The Need  
range (ex PN)



**Not Stocked**  
\$18.99 EACH

Allan Scott Black Label & Cecilia (brut/rose) ranges Matawhero Gisborne range (ex PN)



**Not Stocked**  
\$30.00 2 FOR

Villa Maria Cellar Selection, Esk Valley (ex PN, Syrah, Grenache) ranges \$15.99 each



**Not Stocked**  
\$25.99 EACH

Malibu / Kahlua  
700ml (incl flavours)



**Not Stocked**  
\$34.99 EACH

Ivanov / Seagers (incl lime) 1L



**Not Stocked**  
\$35.99 EACH

Jagermeister / Pepe Lopez (gold/silver) 700ml



**Not Stocked**  
\$39.99 EACH

Larios Rose / Citrus / Larios 12 1L



**Not Stocked**  
\$39.99 EACH

Famous Grouse / Finlandia / Southern Comfort 1L / Smoky Black FG 700ml



**Not Stocked**  
\$47.99 EACH

Wild Turkey  
1L



**Not Stocked**  
\$54.99 EACH

Ratu Dark/Signature/Spiced Rum 700ml range



**Not Stocked**  
\$59.99 EACH

Maker's Mark  
1L



**Not Stocked**  
\$62.99 EACH

Chivas Regal 12yr 1L The Glenlivet 12yr 700ml



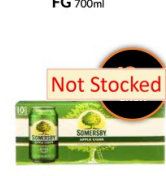
**Not Stocked**  
\$9.99 EACH

Old Mout  
1.25L cider range



**Not Stocked**  
\$9.99 EACH

Fortune Favours  
6pk range



**Not Stocked**  
\$9.99 EACH

Somersby  
10pk can range



**Not Stocked**  
\$21.99 EACH

Haagen  
15pk bottles



**Not Stocked**  
\$24.99 EACH

Asahi  
12pk bottles



**Not Stocked**  
\$24.99 EACH

Lion Red / Waikato / Speights Summit  
15pk bottles



**Not Stocked**  
\$24.99 EACH

Monteith's (classic & batch brewed)  
12pk range



**Not Stocked**  
\$26.99 EACH

Steinlager  
15pk bottles



**Not Stocked**  
\$29.99 EACH

Heineken  
15pk bottles



**Not Stocked**  
\$39.99 EACH

Tui/Export Gold/Extra Low Carb/DB Draught  
24pk bottles



**Not Stocked**  
\$39.99 EACH

Export 33  
24pk bottles



**Not Stocked**  
\$24.99 EACH

Carlsberg  
24pk bottles



Promotion period between 1/07/2021 to 31/07/2021. While stocks last. Promotion only available at participating stores. Please contact your local store to confirm whether they are participating in the promotion and check the pricing in-store prior to purchase. Online pricing will vary.



100% **NEW ZEALAND** OWNED AND OPERATED  
thirstyliquor.co.nz

FOLLOW US ON SOCIAL MEDIA



ASK ABOUT LOYALTY CARD BENEFITS & GIFT VOUCHERS





# Hauroko

VALLEY PRIMARY SCHOOL

Kia ora, Namaraskan, Bula,

"Plant a tree, to grow a future" was the theme for NZ's **Arbor Day**. Our Year 1-6 tamariki joined Philip & Stephanie Symonds and John Patterson down at the Clifden Historical Suspension Bridge for planting of 400 native trees. Our students were immersed in becoming kaitiaki (guardians) of our local environment as we planted to regenerate natives along the Waiau River.

**Cross Country** has been a major focus this Term with students training regularly to further develop fitness and run longer distances sustained over a period of time. Amazing results have been achieved by our students with some significant personal bests and challenges in running being achieved. 22 students qualified at our Interschool Cross Country for Western Cross Country and 8 qualified to represent Western at the Southland Cross Country Championships! Ka rawe!

At Hauroko Valley Primary School we have a unique programme that supports our 4 year-old friends to transition to school. Each week we provide opportunities for **Discovery Time** on Thursdays 1.30pm-3.00pm. This time supports your child to become familiar with our people - staff and students and our place - indoor and outdoor environment.

Term 2 has provided our Year 7&8 students with multiple opportunities to grow in leadership. The Year 8 boys attended **National Young Leaders Day** in Dunedin where they were totally inspired by presenters. All of our Year 7&8 learners enjoyed the **GRIP Leadership** Conference in Gore. Practical interactive sessions were held to guide learners through the responsibility we have to put our hand up, and lead when it is our time.

To finish the Term our Senior students visited Doubtful Sound, Fiordland as part of **Deep Cove Camp**. HVP and WAS collaborate for this experience in a magical marine reserve. Students explored flora, fauna, and tramped the Helena Falls and Doubtful Sound. We would like to thank the Waiau Lions Club for supporting each of our students with sponsorship to attend. We thank our parent helpers who attended camp to support students with educational outcomes as part of Education Outside The Classroom programmes. Also thanks to staff who take great responsibility for organising these memorable experiences.

**Matariki** is an annual celebration on Aotearoa's Calendar as it signifies the Maori New Year. Our overarching theme for 2021 is Diversity and we are working to provide a variety of opportunities for our learners to engage with a diversity of people, culture, language and identity. As part of our Pleiades event we are following the process involved in preparing a Hangi. Thanks to Rosanne and Pete Fowle for joining us to support our learning by providing expertise in the preparation of a hangi. We value times where our community can join together and share.

Musings from our learners are captured by this whakatauki that reflects our Term - "*Ehara taku toa i te toa takitahi Engari, he toa takitini*" "*My successes are not mine alone, they are ours - the greatest successes we have are from working together*".

Enjoy the Winter holidays and if you need some swedes, pop in to grab yours from next to our school mailbox for \$2 a large sweden or \$2 for an odd bunch.

Nga mihi nui, Julia Waikato, Principal/Tumuaki





# Ratty Says ...

Waiau Memorial Library



Hello. Oh boy, it's cold. My poor little paws are so cold, I can barely type.

I learned to make scones earlier this year and now that I'm an 'expert' I thought it would be fun to learn a new recipe. Pikelets! What could possibly go wrong?



I read the recipe first, that's very important. You make less mistakes that way. It was a bit hard to read because there was a hole in the page where the ingredients were. I had to do some guessing. Then I got all of my ingredients together which wasn't

easy. The flour was in this HUGE container and it was very heavy. It was hard work getting it from the cupboard to the bench. I was all tuckered out and I hadn't even started making the pikelets! Then I had to go and ask the ducks to lay some eggs for me, they were a bit grumpy about it but they did. Luckily, I didn't have to milk a cow because there was already milk in the fridge. Everything after that was a breeze ... kind of.

I followed the instructions, I measured everything carefully and mixed up my batter. I was a natural. Then I put the pan on the stove, turned on the heat and hopped onto the stove to start pouring the mixture. That's when the trouble started. I got yelled at for standing on the stove. Apparently that's not a done thing. I was told that my job was to sit on




the bench and flip the pikelets and if I was lucky I could be the taste tester.

The first lot of mixture was poured onto the pan and after a few minutes I flipped them and ... nothing! They didn't rise. I'd

done something wrong! I reread my recipe to see what I'd forgotten and then I saw it. Self-raising flour! I didn't have any so I used plain flour but I forgot to add baking powder to make the pikelets rise - Silly Ratty! After adding the baking powder and a few slightly burnt pikelets I was all done, with a little help ... I was told I was the best pikelet flipper, ever!

The next important thing to do was taste testing. The only problem was that I couldn't decide on maple syrup or golden syrup for a topping. I had both.

**Lindsay Stephenson**  
Dip Phyt, Dip MT, Reg Acup, P3 Dip Rehab, MNZCP (pain management)

**Andrea Murray**  
Dip Phyt, Dip MT

**Alana Makolm**  
BPhyt, BPAEd, Reg Pilates Instructor, PGCert (acup), Reg Acup

**See the friendly team for help with...**

- Back and neck rehabilitation
- Sports injuries
- Dizziness
- Chronic pain
- Occupational health
- PING/Steel Pilates for cancer survivors
- Breathing disorders
- Exercise programmes

**Invercargill clinic open late nights**  
**ACC available**  
**Weekly satellite clinics in Tuatapere and Ohai**

**accelerate** PHYSIOTHERAPY  
60 Deveron Street, Invercargill  
P 218 6583 F 218 4105  
E office@acceleratephysio.co.nz  
www.acceleratephysio.co.nz



**CANTERBURY CARS**  
**4WD Specialists**

**For all your vehicle requirements**

**Cars, utes, 4WDs, vans**

**Finance available**

**Contact: Murray Dowling**  
**027 556 2655**

**Visit our website**  
**www.canterburycars4x4.co.nz**

**Specialising in**  
Dairy Conversions  
Rural Fencing  
Post & Rail

**H Gill Fencing,**  
Eastern Bush  
Phone 021 225 5489  
After Hours 03 225 5488  
Email hamish@hgillfencing.co.nz







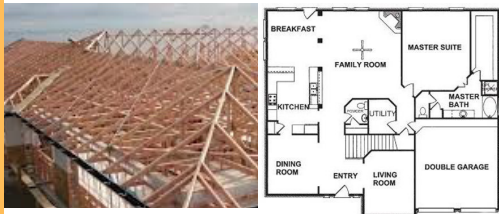

**Agricultural Contractors servicing Western Southland and beyond.**

**BALAGE - SILAGE - GROUNDWORK - FEED TRADING**  
**Nigel 021 226 6156 / fowlecontracting@gmail.com**

## PAUL ANDERSON BUILDER

AVAILABLE FOR ALL YOUR  
BUILDING REQUIREMENTS.

NO JOB TOO SMALL.  
COMPETITIVE RATES.  
REFERENCES AVAILABLE!



**Mobile: 027 890 3602**  
thetakis@outlook.com



C: 0274 247 102

T: 03 225 8652

E: admin@drakeplumbing.co.nz

**KIERAN DRAKE**  
Certifying Plumber  
& Drainlayer



**MR STEEL**  
TUATAPERE

**PH: 027 276 6816**  
MALCOLM

For all your engineering,  
steel fabrication and repair needs!

## FORDE SHEARING LIMITED

Available for all new and existing clients

For all your shearing and  
crutching requirements

Please phone Darin or Julie Forde

(03) 235 8853  
027 229 7760

## Painting & Handyman Services

Experienced Painter

I can help with all sorts of odd jobs too!

Gardening  
Lawn mowing  
Tree & Hedge Trimming  
General labouring



Phone **Luke Wikstrom 027 2773 925**

For all your Accounting and Tax Solutions

Ask for Janice or Trevor England

 **03 2266110**

Aparima Accounting Ltd  
57 Main Road Tuatapere

**YOUR BUSINESS CARD  
COULD BE HERE!**

**CONTACT**  
[yourwesternwanderer@gmail.com](mailto:yourwesternwanderer@gmail.com)

**FOR PRICING/DETAILS**

## PROPERTIES WANTED!

Contemplating selling? You might  
be surprised by what your property  
could fetch on today's market

Contact Julie today for a free appraisal and  
to discuss how you could take advantage of  
this bouyant property market



**Julie Guise**

021 256 4164

[julieguise@sre.co.nz](mailto:julieguise@sre.co.nz)



**SOUTHLAND REAL ESTATE LTD**  
Licensed under The Real Estate Agents Act 2008 MREINZ

**SOUTHLAND  
REAL ESTATE LTD**

Licensed under The Real Estate Agents Act 2008

MREINZ





## Kia ora Western Wanderer Readers!

This term, our WAS students have experienced some worthwhile visiting performers, trips and camps! We try our best to find opportunities which extend and broaden the horizons of our tamariki.

Our Year 7&8's have recently attended Deep Cove with HVP. This camp happens every two years.

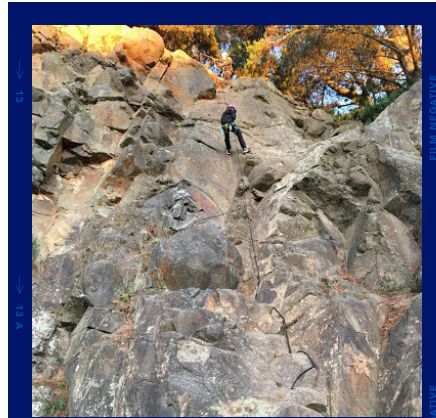
The experiences they had were outstanding and certainly plenty of memories created!

A huge thanks to both schools for all their organisation, and to the parents and staff who attended -

Mrs Donnah Cleaver and Mr Ian Russ thank you.

Camp Columba was the venue for our Year 3-6 students. I had the pleasure of attending this well organised camp, under the guidance of Miss Clare Robinson and Mrs Chantelle Gibbs - thank you.

We had a superb crew of parents who were a tremendous help throughout - thank you for your time and energy.



Please check out our school Facebook page for events and opportunities covered. An acknowledgement must also go to our local Lions and WAS' Board of Trustees for all their encouragement and support financially - your ongoing support is always greatly appreciated.

*Pics shared are: Harry Muldrew abseiling, Mrs Gibbs in action with the students on the outside climbing wall, and Shawn K installing some confidence into the students before they hit the massive slide - this was a real hit and thanks heaps Shawn!*

**Nga mihi, take care and keep safe. Andrew PB**

Below are three quick stories from our junior school - thought they may bring a smile to your face!

### Zip Lining Through The Jungle

by Hannah-May Clark

I was the fourth person in my group to do the zip line. I was a little nervous when I was walking up the stairs, my heart was going BOOM BOOM BOOM! Then the lady excitedly said, "Are you ready?" My heart was going a little bit faster then. I had to get clipped up for my safety or I might fall and I would get very injured. It was a big drop. I don't think the ground would appreciate me hitting it with great force! She opens the gate and counts... 1, 2, 3 GO! She pushes me off. I was going pretty slow at first but it got faster and faster when I got lower. It felt like I was Tarzan swinging from branch to branch. That was my day zip lining through the jungle. I think I was Miss Tarzan. I know I can do anything now.

### Camp Columba

by Amelia McPherson

Yay we're finally at camp. Omg there is a bouncy pillow! I am so excited. It is the last day, nooooo... the last day, but my first activity is abseiling. I am so excited to go now. I wanted to go first but someone else did. I was the second girl. I was so excited to do it but when I got on, I was so scared my heart was beating like a drum. I was shaking, I felt like the cliff was going to fall, but I slowly went down one step at a time. I was surprised at how many of my friends made it alive. I made it and it felt so good. I am so proud of myself!

### Camp Columba is Cool!

by Izin Sherbourne

My favourite activity was the flying fox. I felt happy I was going on it. I was as free as a bird and I sailed through the warm air. Walking up the stairs I was feeling a wee bit weird in my tummy. I was first in line and got clipped up and then off I went. I was very excited. It was over too fast and I only got one turn. I can't wait to do it again.

# WAI AU HEALTH TRUST – July 2021

## Medical Centre

### Flu Vaccines 2021

Flu vaccines are available now for everyone in our community - and will be through until 31st December 21. If you would like to receive a flu vaccine please call us to make an appointment. Unsubsidised vaccines are \$34.00.

**Group 3 Covid Vaccines – We have no details, as of writing this edition, for any arrangements of when & where these vaccines will be managed for our Rural Practice. The most up-to-date information is on the MOH website [www.moh.govt.nz](http://www.moh.govt.nz)**

We are pleased to have GP Dr Murray Allen working for us again every Thursday through till the end of October. NP Amanda McCracken will be on Annual Leave from 21st June – 9th July. GP Yan Wong is working for us 3 days per week in Amanda's absence.

Practitioner cover is as follows:

Monday: NP Sheryl Eden  
Tuesday: NP Sheryl Eden & GP Yan Wong  
Wednesday: GP Yan Wong  
Thursday: GP Murray Allen  
Friday: GP Yan Wong

### **SAME DAY REPEAT PRESCRIPTION REQUEST:**

**As advertised in the last WW edition our same day request scripts are now \$28.00. We are doing this as many people have been consistently ringing up giving as little as one hours' notice of needing to collect a script. Our Practitioners are very busy seeing patients every day and they need time to check records & details prior to writing a script. To be fair to all we encourage you to pre-plan and request at least 3 days prior.**

**Should you have any questions or concerns I look forward to hearing from you.**

Kind Regards

Jo Sanford (Manager)

Cell: 0272950429



**Waiau Health Trust**  
69a Orawia Road, Tuatapere  
Approved Registered ACC Provider  
Monday to Friday  
9:00am – 4:30pm  
Ph.: 2266123

*Practitioner Hours*  
Amanda McCracken (NP) – every  
weekday

Sheryl Eden (NP) – every Monday &  
Tuesday

Murray Allen (GP)  
Thursdays

Liz Scott (GP)  
2<sup>nd</sup> Tuesday of every month

**Physiotherapist**  
Tuesdays & Thursdays  
Phone for an appointment

Podiatrist  
Visits regularly –  
Phone for an appointment

Warts/Minor Skin Lesions  
Liquid Nitrogen treatment available  
Phone for an appointment

Homebased Maternity Care  
We are offering this service in the  
patient's home. Please contact Jo  
Sanford on 2266123 for enquiries.

Day Activities Programme for  
the Elderly  
Every Tuesday & Wednesday  
Please phone for further information.

District Nursing  
Available as required by referral

**Royal Bush**  
TRANSPORT LTD

**CONTACT US  
TODAY**

**Phone 03 221 7192**

**Fax 03 221 7194**



- Excavators for general farmwork
- Laser guided drainage
- Gorse mulching & land clearing
- Lane maintenance
- Conversions
- Effluent Ponds
- Demolition
- 20 tonne bulldozer, roller, grader
- Drain ploughing & alkathene laying

## **Bucket Honey Cafe**

We have

- HONEY
- Great Coffee
- Homemade Pies
- Juice Bar
- Sandwich Bar
- Homemade Icecream

**Come in and try our honey!**

*Phone: 022 0887 993  
16 Orawia Road, Tuatapere*







We specialise in:

- Resource consents**
- Farm environmental plans**
- Policy advice**
- DOC concessions**
- Landscape plans & assessment**

We take care of the paperwork, so you can do what you do best!

Sonya: 027 5050 077  
 Rebecca: 027 4246 129  
[www.slpw.co.nz](http://www.slpw.co.nz)  
 Locally owned & operated

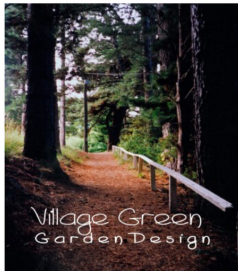
## Landscape Garden Design

What do you want from your garden?

Whether building new or revamping your existing garden an overall plan is essential.

Free Initial Site Visit

From a few questions to get you started, to a full landscape design.



Village Green  
 Garden Design  
 Tuatapere

Ph Robert  
 027 9241 204

**WANTED TO BUY**  
 Possum Fur, Hard deer, Antler, Deer Velvet.  
 Phone Leith 027 496 3721

### CHAINSAW SHARPENING

All chainsaw chain sizes precisely sharpened and rakers taken down accordingly, guaranteed results  
**Chain only \$10 Taken Off & Refitted \$13**  
 Please phone (03) 2266940 evenings

### TUATAPERE OUTDOORS & HARDWARE

For all your

Gardening tools, lawn care, garden hoses, insect and disease sprays, potting and compost.

We have those building requirements for that weekend job with a good selection of silicone, nails, screws and bolts.

New fishing rods and reels, fishing lures, good selection of soft bait, fishing nets, flounder and eel nets.



Good selection of giftware.

Come in, check out what we have.

**Contact:**

Judy 027 225 8192  
 Paul 027 890 3602  
 Shop (03) 226 6363

### GREAT FREIGHT RATES

**Same Day Door to Door**  
 Monday - Friday

**General Light Freight Service**  
 No Rural Surcharge



- Fresh & Chilled Freight
- Meat & Vegetables
- Flowers & Chocolate
- Bottled Milk
- Prescriptions
- Vet Supplies
- Ag. & Vehicle Parts
- Hardware
- Oil & Lube
- Ammo & Chemicals

Invercargill - Winton - Drummond - Otautau  
 - Tuatapere - Ohai/Nightcaps - Riverton

**027 340 5845**

[bulletcourier8@gmail.com](mailto:bulletcourier8@gmail.com) [bulletcourier.org](http://bulletcourier.org)

# INTRODUCING

**STREBEL STRIP TILLER  
WITH A KUHN 6 ROW  
BEET PLANTER COMBINED  
FRONT FERT HOPPER**



## **STRIP TILLER BENEFITS:**

**ONE PASS - SAVING YOU MONEY**

**LESS CULTIVATION = LESS BUGGING**

**KUHN BEET PLANTER IS ABLE TO SOW SWEDE & BEET**



**FOR MORE INFO OR TO BOOK PH:**

**Kahu - 027 5183 448**



# For Landscaping, Lane Maintenance, Gravel Supply & Cartage

GRADES OF CRUSHED & SCREENED GRAVELS, ALKATHENE LAYING, ROOTRAKING, FARM TRACKS, DAIRYLANES



**K J SUTHERLAND  
GRAVELLING & AGRICULTURAL CONTRACTOR  
2475 OHAI-CLIFDEN H/WAY  
DRAWIA R.D2 OTAUTAU 9682  
Ph 0274 367 934**

ELEVATOR SCRAPER, BOBCAT & ATTACHMENTS, LANDSCAPING, TRENCHING AUGERS

Supplies of Gravel Ex Waiau River

River Run Screened Grades Concrete Gravel Pea Gravel  
Rejects for soak holes Crushed - AP30 and Ap65

Pebbles for Sheep and Cattle yards and calf sheds  
Fines suitable for cow lane capping

## **K.J. Sutherland Contracting**

**Bobcat T190**

**With attachments: Landscape Rake,  
Augers and Trencher**

**Suitable for all landscaping, shed and yard  
maintenance**

**Muck-spreader and tip trailer available**



**PHONE KEVIN  
027 367 934 / (03) 225 5716**

## INDEPENDENT MIDWIFE

**ISOBEL DEVERY**

*Caring for women throughout  
Pregnancy, Birth till six weeks  
Post Natal.*

*Choices for place of birth,  
Home or Winton Birthing Units  
or Kew Hospital.*

*Free pregnancy tests  
available on request.*

**Phone: (03) 22668822  
027 2267020**

©Pecore, EthicGraphics®

# Alex Reid CONTRACTING

Paddock Cultivation from  
Ploughing to Sowing Dry Hire  
available Aerating Direct  
Drilling Ridging Mulching



### Dairy Lane Maintenance

Tip Trailers • Vibrating Roller • Effluent Services

### Sheep Conveyor

Drenching, Vaccination etc • 3 way draft



**Rural Contractors**  
NEW ZEALAND

### Large Skid Steer for calf shed cleaning, loading Muck Spreaders etc

4 Muck Spreaders • 16,000 litre Slurry Tanker  
• Pond Stirrer • Umbilical Slurry System

**PH ALEX 0212775308 CELL**  
**03 2255377 HOME**

## WAIAU VALLEY SHEARING LTD



**Simon de Vries**  
**Julie Heaps**

**027 840 9867**  
**03 226 6212**

## WESTERN ELECTRICAL

2008 LTD

Electrical Solutions

Domestic | Industrial | Commercial

**Quality Service at Competitive Prices**

- New Builds, Rewiring & Alterations
- Dairy Shed, Farm & Industrial Maintenance
- Hotwater Element Replacement
- A/H Call Out Service Provided



**Ph 03 225 8974 / 027 439 3787**

**Fax 03 225 8973**





# Jacqui and Superior go the extra mile

Are you frustrated with the lack of service from your local fertiliser consultant, peddling the same advice year after year regardless of your production outcomes, environment and sustainability?

Give **Jacqui Chamberlain** of Superior Fertiliser Specialists a call. She will bring whole new meaning to service and client/advisor relationships.

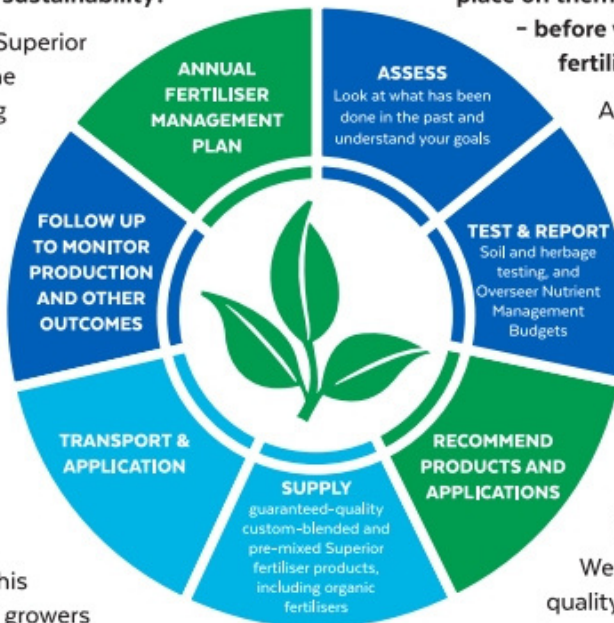
Jacqui is a key member of the highly skilled Superior team totally committed to helping you develop healthier, more productive soils and plants.

We form a specialist fertiliser company that provides high quality advice and products at competitive prices. We have been doing this for South Island farmers and growers for just on 20 years.

Superior promotes a total soil care package. First, we get to understand the make-up, nutrient status and health of your soils, the demands you are going to place on them, and your production goals – before we apply one kilogram of fertiliser.

A comprehensive regime of vigorous soil tests will be undertaken and the results will provide the basis of a Superior Fertiliser Management Plan customised for your unique situation. This will complement your farm's Environmental Plan and provide the blueprint for an ongoing annual fertiliser programme.

We then supply guaranteed-quality solid fertiliser for your pasture and crops, monitor production and other outcomes, and update your Plans as required.



It's free to talk so don't hesitate to give Jacqui a call.  
Phone 027 202 0611

**Jacqui Chamberlain**  
Fertiliser Advisor Southland  
027 202 0611  
jacqui@superior.net.nz



**TUATAPERE SERVICE STATION  
20 ORAWIA ROAD  
PHONE: 03 2266475**

**AMMUNITION**

**Better late than never but all shotgun ammo is now in stock**

**SPECIAL**

**Winchester 22 subsonic ammo  
Only \$105.00 per brick  
or \$12.00 per packet**



**HARDWARE & TOOLS IN STOCK**

**Nails, screws, tec screws, bolts and nuts, dyna bolts, pulleys, karabiners, hinges, padlocks, rope, chain, hammers, pliers, screwdrivers, saws, spanners and much more**

**WHITEBAITERS**

**If you are wanting any special nets ordered in please let me know and we can order now for July delivery.**

