



WESTERN Wanderer

Tuatapere | Clifden | Orawia | Blackmount | Monowai | Colac Bay | Orepuki

Cover Photo Credit: Colin Brammer. Main Road, Orepuki

Issue 234

At a glance ... what events are on this month?

JUNE 2021

MONDAY	TUESDAY	WEDNESDAY	THURSDAY	FRIDAY	SATURDAY	SUNDAY
31	1	2	3	4	5	6
7  QUEENS BIRTHDAY PUBLIC HOLIDAY	8	9	10	11 29th Lions Annual Hay Bale Drive 134 Grove Burn Rd	12	13 Western District Hoedown - Noon onwards - WTCC
14	15	16	17	18	19	20 Notices, events, adverts etc in to the WW for the July Issue
21	22	23 AGM Tuatapere & Districts Promotions Inc 7:00pm WTCC	24 Soup & Chat 11am Tui Base Camp Raising Body Confident Kids with Emma Wright 7:30pm WTCC	25	26	27 AGM Waiau Town & Country Club 2pm WTCC
28	29	30	1	2	3	4 Winter Wonderland Community Pot Luck Dinner WTCC
5	6	7	8	9	10	11

Special thanks to



WAIU AREA SCHOOL
Year 1-13 Education

Live to LEARN, LEARN to Live

for their support with the printing

SEE INSIDE FOR MORE DETAILS!
Want your event here? Let us know at
yourwesternwanderer@gmail.com

HANDY PHONE NUMBERS

EMERGENCY

POLICE / FIRE / AMBULANCE: **111**

MEDICAL CENTRE: (03) 2266 123

TUATAPERE POLICE STATION: (03) 2269 020

TUATAPERE COMMUNITY WORKER: 027 757 5983

HAUROKO VALLEY SCHOOL OFFICE: (03) 2266 753

WAI AU AREA SCHOOL OFFICE: (03) 2266 285

TUATAPERE CEMETERY TRUST: (03) 2266 065

CHAMBERS SERVICE STATION: (03) 2266 654

TUATAPERE SERVICE STATION: (03) 2266 475

TUATAPERE FOUR SQUARE: (03) 2266 898

TUATAPERE OUTDOORS & HARDWARE: (03) 2266 363

Tuatapere & Districts Promotions Inc

Paula McKenzie, President

We would like to share with you the results of the Railway Station survey that many of you completed towards the end of last year.

The Promotions group is now working closely with The Community Board Team and the SDC to solve the dilemma of the Railway Station. A big thanks to Margaret and the Community Board for putting out the survey, taking the time to analyse the results, and supporting the community to have their say on the matter.

We hope to put a plan in place in the near future that will reflect the wishes of the community as per the survey. And of course we will keep you up to date on this.

Railway Station Survey Results

Total number of responses: 105

Question 1: Do you wish to see the Tuatapere Railway Station building retained as a community asset?

- Yes – 68%
- No – 32%

Question 2: If the railway station building was to be retained as a community asset, who would you prefer to own the asset and be responsible for the costs associated with repairs?

- The Tuatapere Te Waewae Community Board – 49%
- A local community group or organisations – 33%
- Other – 18%

Some comments from this question:

- * Neither - as a ratepayer I strongly object to the Community Board taking on such a liability. Existing community groups struggle with volunteerism and maintaining their assets as it is.
- * The community cannot afford to pay additional rates for a building that has clearly been neglected for many years.
- * Tuatapere & District Promotion should take it over.
- * NZ government.
- * Either the community board or a community group.
- * I would like a group and the community board to work together.



Future Farming Expo 2021

Friday 11 June
11.30am - 5pm
Otautau Sport Centre

NEW DATE AND TIME

About the expo

With increased awareness of the impacts on land and water as well as shifting consumer behaviour, there is a real opportunity for the food and fibre sectors to meet these challenges.

Join the ACE catchments in a discussion with industry leader experts on how the food and fibre sectors are researching, innovating and leading to reduce the farming environmental footprint.

For further details contact
Rachael Halder
Senior Catchment Coordinator | 021 566 229

Please note that if you previously registered for the expo this will be rolled over to the new date and time.

Doors open at 10.30am, speakers start at 11.30am.
Lunch provided.

Limited seats, register to secure your spot.

Buses from outside the catchment will be running to get you to the expo. Watch this space for more information or contact the Thriving Southland office.

Please register at
www.thrivingouthland.co.nz/ace

Brought to you by Aparima Catchment Groups

Question 3: If the railway station building were to be taken over by a local community group or organisation, would you (or an organisation/group you are involved with) have an interest in taking it over?

- Yes – 31%
- No – 64%
- Question unanswered – 5%

Question 4: If the railway station building was not retained as a community asset, what would you prefer to be done with it?

- Removed or demolished – 21%
- Sold to the private market – 54%
- Question unanswered – 25%

Some comments from this question:

- * *If it was sold to a private market it would not stay in Tuatapere.*
- * *It should provide free firewood - for locals only.*
- * *The community needs to be actively involved in the decision i.e. who comes forward interested in buying it and what do they intend to do with it.*
- * *Would be such a shame to lose this historical asset.*
- * *After removal or demolition of the building there should be beautification of the area done and native trees planted to commemorate the site.*
- * *Sell or give for removal. Ground to be left tidy under council administration.*

On another note, we have welcomed new members from the business community to our group. I can't stress how valuable it is to have input from this sector. In fact back in the day, it was a group of people who ran businesses in the township that started the Promotions Group!

Anyone is welcome to come along to our gatherings - especially if you have a brilliant idea to share! **We're holding our AGM on 23 June, 7pm at WTCC - come along!**

COMMUNITY POT LUCK DINNER!

Save the Date!! Saturday 4th July! 4pm onwards!

We're hosting a Winter Wonderland themed Pot Luck Dinner for everyone in the community! This is an event we hope to host every year. Please bring your favourite dish - it could be a family fav, Grandma's secret recipe or a dish from your home country!

Enter our Winter Wonderland Decorated Cake competition - there's a prize for the best one and then we'll auction it off and eat the others for dessert!

We've got a surprise for the kids too! We'll let you know more through Facebook & the Community Noticeboard!

COMMUNITY NOTICES & EVENTS

COMMUNITY EVENT SIGN GUIDELINES



PURPOSE:

The community event sign is a Tuatapere & Districts Promotions Inc initiative. It is a place to promote local events that have a community benefit.

Events will be sourced from Western Wanderer, otherwise will be received through email at yourwesternwanderer@gmail.com.

All efforts will be made to accommodate events on the sign board, which may require sharing the event board or a shorter time frame for display.

Promotions Inc will have two people assigned to the event board, thereby covering any event sign changes that may be required.

LOCAL GROUP NEEDS TO:

- Provide a message within the following parameters:
 - 3 lines with up to 10 Characters per line excluding spaces
 - Includes Date and Time of event
 - Contact person name and phone number will be provided for any queries.

PROMOTIONS INC WILL:

- Make every effort where practicable to put the event on the board up to min 1 day in advance of the event.
- If there are any issues with putting the event on the board the event person will be contacted.

CRITERIA:

- An event/celebration within Tuatapere & Districts.
- Community/nationally significant messages.
- Clear message including date/time.
- Enough time given to load message onto board.
- No personally offensive messages will be accepted.
- Community/Voluntary events will take priority over commercial events.



PICKLEBALL at Clifden Hall

Pickleball is now closed for Winter.

We'll let you know when we start up again!



SALVATION ARMY FAMILY STORE TRUCK

The Salvation Army Family Store Truck will come out and collect large amounts of your pre-loved furniture & other household items. This service is free.

Please call the store to organise your visit on **03 214 5380**



Family Store

Donate. Buy. Help.

familystore.org.nz



TUATAPERE HEALTH & GIFT SHOP - Riverton Pharmacy

We now have two courier drops for prescriptions for our Tuatapere customers:

1:00pm and 4:45pm.

The Health & Gift Shop is open from 12:30pm - 5:30pm.

If we can help in any other way, please contact Riverton Pharmacy **(03) 234 8515**



COUNTRY CORNER CRAFTS

Come in and browse and see what we have to offer. Hats, scarves, children's knitwear, cards, jewellery, woodware, sewing, jams, pickles, sauces, etc.

Tuatapere souvenirs "On Natures Edge" logo are always available.

Is anyone interested in joining to sell their crafts? You are more than welcome to contact us.

Want to volunteer your time & work in the Craft Centre - let us know! It's a great way to meet people! If you wish to view the shop and it is closed, please ring the ladies below to open it for you.

Louise Greber (03) 668 6001 or

Lyla Sherriff (03) 226 6187

NEED A JP?

The following Justices are available by appointment:



Tuatapere

Keri Potter 027 526 3137

Donald Egerton 027 432 5407

Te Waewae Bay

Shirley Whyte 027 504 5220

Blackmount

Nicky Baker 0276435880

WESTERN SOUTHLAND WOOLCRAFT GROUP

Spinning, Felt, Weaving, Knitting, Crochet. Other crafts welcome!

1st Wednesday of the month.

10am - 3pm. BYO Lunch.

For details please contact:

Helen Todd 022 378 9743



TUATAPERE & DISTRICTS LIONS CLUB PROJECT



SUPER DIRT

Super dirt bags are now weighed so more in each bag!

\$8 per bag - ready for your garden!

Super dirt can be collected from: Cracks Yard, Grove Burn Road, in the mornings Monday to Friday. Weekends by arrangement.

Delivery by arrangement - (but not guaranteed)

Phone Trevor (03) 225 5864 or

Stephen (03) 226 6817



TUATAPERE COMMUNITY WORKER

Room 5 Medical Centre
69A Orawia Road

Monday - Thursday 10am to 3pm

Keri Potter **027 757 5983**

Email: tcworker@xtra.co.nz



WAI AU MEMORIAL LIBRARY

Library Hours: Fridays

10:00am - 11:30am

2:30pm - 4:00pm

7:00pm - 8:00pm

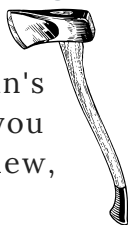


The Library now has Wi-Fi. Available free to all library members. Just ask one of our friendly volunteers to help you set up your device.

TUATAPERE BUSHMAN'S MUSEUM

Orawia Road. If the Bushman's Museum is not open when you have visitors who wish to view, you can contact:

Lindsay Faulkner (03) 226 6650 to arrange a suitable time.



TUATAPERE ENVELOPES

Envelopes printed with the "Tuatapere on Nature's Edge"

Logo can be purchased at Country Corner Craft Shop
1A Orawia Road

Cost \$3.00 per 10



TUATAPERE MAINLY MUSIC

A pre-school music and movement-based playgroup.

Mondays during the school term at the Tuatapere Presbyterian Church Hall.

Music session starts at 10am followed by a time of morning tea and play. \$2 per family.

Morning tea is provided for all.

New families welcome!

Find us on Facebook:

"Tuatapere Mainly Music"



mainly music

For more information contact Heidi 022 315 3326

Get your car washed, dried and windows cleaned - Price arranged on request!

Contact: Rex Hibbs
Flat 1/26 Orawia Rd, Tuatapere

COMMUNITY NOTICEBOARD

TARGET SHOOTING SOUTHLAND

Have you thought of small bore rifle shooting which is known in Southland as target shooting?



Nightcaps meet on a Monday night.

Contact: Raeleen Sinclair (03) 225 7834

Tuatapere meet on a Wednesday night.

Contact: Kevin Daly (03) 234 5162 or

Quinton Erskine (03) 226 6969

<https://www.sporty.co.nz/targetshootingsouthland>

TUATAPERE SCOUTS

Are you and your family looking for something that will foster personal development, create a sense of community and at the same time challenge you or a school age member of your family? Have you thought of joining Scouts?



At Scouts we have Kea's for children aged 5-7 yrs, Cubs for children aged 7- 9 1/2, Scouts for 9 1/2 -15 yrs.

We also have a need for leaders so we can deliver our programmes effectively. Please contact:

Leader Anne-Marie 027 688 5828

Group Leader Quinton 027 223 4842 or (03) 226 6969

Please Note:

Next term we will be changing our programme to a **Monday afternoon/night**. First afternoon/night will be **10th May**.

TUATAPERE PLAYGROUP

23B Orawia Road. **Friday Playgroup 9am - 12pm**

All parents and children welcome!

Children's morning tea is a packed lunchbox from home at Playgroup (as opposed to a shared morning tea).

Any queries please contact:

Gemma Bennett 022 040 3368 Alice Harris 027 270 0363

CLIFDEN PLAYGROUP

45 Otahu Eastern Bush Road.

Every Wednesday (during School Term) 9:30am - 12:30pm.

All mothers and children welcome.

Bring packed lunchbox for your child's morning tea.

Any queries to: Lynley Patterson 027 429 7436

TUATAPERE TOY LIBRARY

Tuatapere Toy Library has been a toy swap/hire service provided to the young families of Tuatapere and surrounding since 1989. The purpose is to create opportunities for the little people of our community to have accessibility to toys. A small contribution of an annual membership allows families to join the group and have access to the toys.

For more information or questions please text or ring Nathalie Pahl on **027 4759 075**



WAI AU SQUASH CLUB

Squash is a great way to get a bit of exercise over the winter months, have some fun and meet some new people.

Women's Interclub - Tuesday evening.

Men's Interclub - Thursday evening.

For more info please contact:

Nic Mitchell **021 815 531** or

Sam Egerton **027 2505 477**



SENIOR CITIZENS

Senior Citizens is a group of over 60s that meet every **Friday afternoon at 1pm** at the rooms behind the RSA Hall.

We are always looking for new members so if you would like a fun afternoon playing bowls, cards or just catching up with friends, come and join the group.

Contact: Olive Bennett Ph **(03) 2266 477**

WAI AU VALLEY PRESBYTERIAN CHURCH

Services for all ages! Every Sunday at 10.30am.

Tuatapere Presbyterian Church, Main Street, Tuatapere. All welcome to join us.

For information please contact:

Chris Howden Session Clerk 021 477 999

TUATAPERE AMBULANCE

Did YOU Know?

The Tuatapere Ambulance is a funded service by the Tuatapere Lions Club, for the residents of Tuatapere & Districts.

Should you receive an account for this service from St John, please forward it immediately to:

The Treasurer

Tuatapere Lions Club

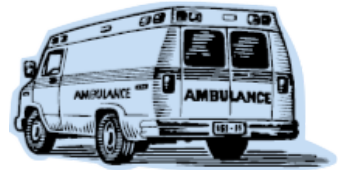
PO Box 47

Tuatapere

Sometimes we experience difficulty in receiving the invoices for YOUR trip - so PLEASE do forward them on to us.

Thank you!

**Tuatapere Lions Club Charitable Trust
Ambulance Committee**



WESTERN SOUTHLAND HEALTH SHUTTLE

The Western Southland Health Shuttle Service travels from Otautau, Ohai, Nightcaps, Tuatapere, Riverton - covering all of Western Southland. We also connect with the Invercargill-Dunedin shuttle.

The Western Southland Health Shuttle operates Monday - Friday (excluding Public Holidays).

Bookings are required by 3pm the day prior to transport.

Ph: 0800 103 046 to book.

Please book as soon as you receive your appointment.

TUATAPERE VOLUNTEER FIRE BRIGADE

We're on the lookout for members to join this rewarding organization. We are looking for persons who are, ideally, available throughout the day.

If you think that you would like to try this (sometimes lifelong) commitment, then please feel free to come and try it!

We train on Tuesday nights at 7:30pm during daylight saving and 7pm through the winter months.

We look forward to meeting with you.



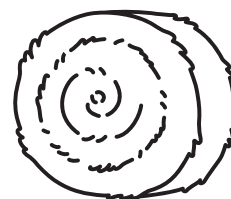


29th ANNUAL HAY DRIVE

TUATAPERE DISTRICT LIONS
Hay, Baleage and Silage Competition

Friday 11th June 2021

Rabco Contracting at 134 Grove Burn Road



The Hay and Baleage will be auctioned at 3pm on the afternoon of the 11th June 2021.

The recipients of the day's profits are:

*Hospice Southland, Tuatapere Free Ambulance Service,
Education Fund within the Community.*

We are at present contacting all farmers with Pit Silage and a local Lion Member will be in contact with those farmers shortly.

If we miss someone please contact: **Charlie Copeland 027 669 1529**

Entry for this competition will be \$80.00 + GST of which 100% will go to the nominated charities. Those entering this section of the competition will have a chance of winning the very generous major prizes, **as well as** an almost guarantee of collecting a spot prize on the 11th of June **so long as they are present on the day.**

FARMERS WHO DONATE 3 OR MORE ENTRIES WILL HAVE AN EARLY CHANCE AT THE PRIZE BOARD. One entry comprises of:

- 8 small bales per entry **or**
- 1 large hay bale **or**
- 1 bale of baleage
- 1 entry silage (pre judged)

Donations of straw will be gratefully received.

A Lions Member will contact farmers approximately 1 week prior to the competition.

The auction of entries will be mid afternoon. **We hope to sell 200 bales baleage, 200 conventional bales and 50 large bales of hay.**

This year we have several new sponsors as well as more demonstrations of ALL the new motorbikes and some new 4 x 4 utes. Farm machinery items will be on display.

Several competitions during the day include:

- The Best Swede
- Best Fodder Beet
- The Best Turnip
- The Best Chou

} Generous prizes
for each event!

3pm Main Auction of Hay, Baleage, Straw and Larger sundry items.

4pm Prize presentation for competition entries and spot prizes.

The judging will be done during the morning of the 11th of June. The Lions Club will be providing food & refreshments at a very reasonable cost. You are all invited to turn up early and participate in the scrumptious light meal that will be available at lunch time.

We will acknowledge the generosity of our sponsors prior, during and after the competition.

With over 100 sponsors for our competition day we have a fantastic prize list.

We remind people that they **MUST** be present at prize giving to participate in the "spot" prizes at the conclusion of the major presentations.

Over the years the patronage from farmers has increased to almost 100% support, so let's try to make our 29th competition the best ever.

For any further information please contact: Competition Chairman: Sammy Sanford **027 438 2248** ; Stephen Crack **027 434 6871** ; Charlie Copeland **027 669 1529** ; Quinton Donald **027 438 8281**

Tuatapere Freight

(formerly Tui 2 Town Freight)

RUNS MONDAY TO FRIDAY
WEEKENDS BY ARRANGEMENT

Phone Brandon

027 436 4360



Riverton Electrical Ltd

The Bright Green Sparks
Industrial, Commercial, Residential
Member of Sustainable Electricity Assoc. of NZ Inc (SEANZ)

0274327215

Email: rivertonelectrical@gmail.com
Address: PO Box 10, Riverton 9847

Proud to support Western Southland - keeping it local!

**Call today to discuss your energy needs
for the home or business**



Specialists in:
Renewable Energy
Energy audits
Energy management
Home ventilation
Heat Transfer
Dairy maintenance
Effluent systems (Electrical)
Preventative maintenance
Freeview TV

TUATAPERE HANDYMAN SERVICES

Barry Bennett
(03) 226 6730

- **Painting - Interior/Exterior**
- **Waterblasting**
- **Carpet & Upholstery Cleaning**
- **Spider & Fly Spraying**
- **General Repair Work**
- **Lawnmowing**
- **Hedge Trimming**
- **Weeding**



IN AND AROUND TUATAPERE

Tuatapere Toy Library Bouncy Castles!

Nathalie Pahl, President

As you may or may not know, the library owns a great bouncy castle. This castle is for rent to anyone who could do with a little bounce. **You do not need to be a member of the library to rent this party prop.**

For only \$25 (+\$100 bond) the bouncy castle is yours for a day.

As the bouncy castle has been very popular for many years, we thought it would be a great idea to extend the range. We have been very fortunate. The Community Partnership Fund has generously granted the Tuatapere Toy Library the money to buy a new bouncy castle. So that is exactly what we did.

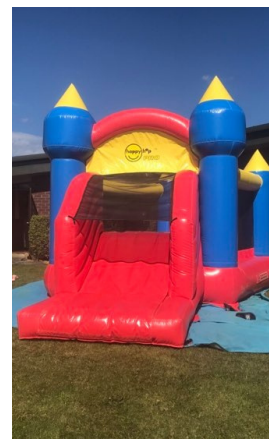
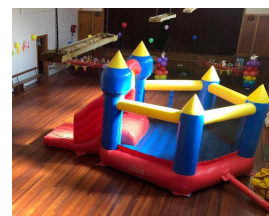
We now also have an obstacle course bouncy castle available for hire. This castle is great fun. A little more suitable for younger kids and with the netting on the sides you can also turn this castle in to a big ball pit! We have a big bag of balls to make this possible.

This castle is also for hire to anyone at \$25 (+ \$100 bond).

You may think this is too cheap for so much fun. But we think fun needs to be available to every budget.

We are a non-profit community group and we are here to provide fun to everyone.

We are looking into getting another fun park to add to our range, watch this space!



**Book a bouncy castle
call or txt Nathalie on
027 4759 075 or message
our facebook page**

Soup & Chat

Keri Potter, Tuatapere Community Support Worker



Our first Soup & Chat was held on the 22nd April 2021. It was a great morning and we had 18 people attend.

Our venue is Tui Base Camp and what a great job well done by Shirley and the crew. Thank you everyone who came along for your support!

By the time you read this, we will have had our second Soup & Chat (20th May) at Tui Base Camp. If you came along, we hope you enjoyed it!

Our next Soup & Chat will be held on 24th June at Tui Base Camp from 11am to 12:30pm.



Future Soup & Chats

- 22nd July 2021, 11am - 12:30pm, Tui Base Camp
- 19th August 2021, 11am - 12:30pm, Tui Base Camp
- 23rd September 2021, 11am - 12:30pm, Tui Base Camp
(This will be the last Soup & Chat for this year)

Come along and enjoy! Book (for catering purposes only) by calling Keri Potter 027 757 5983

FOR SALE

Good Quality Hay Bales \$10
Ph: Wayne 027 457 6350

Shearing magazine

Des Williams (editor)

Tel 07 839 2891 : Mob 0274 833 465

Email : shearingmag@xtra.co.nz

Member NZ Guild of Agricultural Journalists and Communicators (Inc)

LAST SIDE PUBLISHING LTD

PO Box 102, Hamilton 3240, New Zealand

Shirley Whyte

Your local real estate specialist living & working in Western Southland



for: Friendly service, reliability,
sound local knowledge in
Western Southland,
Te Anau & Stewart Island

Harcourts



M 027 504 5220 O 03 214 4080

E shirley@harcourtsimv.co.nz

W www.harcourts.co.nz

Sewing and Mending Services Available

Experienced machinist offering fast, reliable service with very reasonable rates.

I will mend/make anything from zip replacements to curtain making - just ask!

Free quotes and pick-up delivery service within Tuatapere.



Contact Deborah

(03) 226 6783 or 021 0305 667



TAP INTO YOUR OWN WATER SUPPLY
WITH OUR DOMESTIC WATER BORES

- Domestic Water Bores
- Piezometer Installations
- Site Investigation Drilling
- Seismic Line Drilling
- Diamond Drilling
- Push Tube Coring

www.helidrill.com grant@helidrill.com 021 543 816

IT'S NOT JUST ABOUT RUGBY



IT'S ALSO ABOUT BEING AN EGG WITH YOUR MATES

WAIATU STAR JUNIOR RUGBY

ESSENTIAL OILS 100% PURE GIFTS OF NATURE
Florals Trees Plants Herbs Spices Citrus

To Learn More, phone or text your local Wellness Advocate
Carol Erskine Papatotara 0274 599 654



GREAT FREIGHT RATES

Same Day
Door to Door
Monday - Friday

General Light
Freight Service
No Rural Surcharge



- Fresh & Chilled Freight
- Meat & Vegetables
- Flowers & Chocolate
- Bottled Milk
- Prescriptions
- Vet Supplies
- Ag. & Vehicle Parts
- Hardware
- Oil & Lube
- Ammo & Chemicals

Invercargill - Winton - Drummond - Otautau
- Tuatapere - Ohai/Nightcaps - Riverton

027 340 5845

bulletcourier8@gmail.com

bulletcourier.org



Registered **ELECTRICIAN**

For all electrical work
No job to small
A/Hours service available

Jay Brownlee
8 Carlyle Street, Tuatapere 9620
A/H 03 226 6673
Mob 027 4965 863
sparkieintuatapere@gmail.com



TUATAPERE TE WAEWAE
Community Board

Margaret Thomas, Board Chair

In spite of the mid-Winter weather, the town and the surrounding area has been quite busy. We have had lots of visitors to our place. The camping grounds have had campervans, caravans, and campers - all enjoying staying in their grounds. People have also enjoyed the Air BnB and Book-a-Bach facilities in our area.

Recently, Tui Base Camp had six bus loads for lunch which I am sure must have been quite a challenge. Tui Base Camp along with some help from Promotions put together an excellent illustrated map high-lighting the interesting places to visit. This included museums, historical buildings, galleries and retailers. The bus loads of tourists explored our town on foot. The weather was beautiful! These people were part of a Train Tour organised by Pounamu Tourism. The Kingston Flyer was stoked up for the occasion. Thank you to all the people who helped make this a great day.

I wondered about having 'Tuatapere Ambassadors' available to assist with tourism buses. A little training would be given. **Would this interest you?** I am also still looking for people who would be interested in becoming a 'Friend of the Green Heart', to assist on a voluntary basis with gardening.

Tuatapere RSA Hall: I am very pleased to report that the stage drapes in the hall have been repaired. Users of the stage please be extremely careful when using these. They are old and very fragile as are the painted stage backdrops and fabric. Please do not let children operate these. Could I ask that you please notify me of any damage.

Some footpaths on Orawia Road have been replaced. This will make the footpath users - walkers, baby buggies, runners, wheel chairs, electric scooters etc have a much safer journey.

Notice boards that are placed on the grass verges are giving us information about the water scheme and repairs.

The Monowai Swing Bridge on the Waiau: Most of the repairs to this bridge have been completed. Keep an eye on the Tuatapere Southland FB page for any updates

Repairs are being carried on the Post Office Bridge at present. This is necessary because of erosion around the bridge supports in Boundary Creek. Please be extra careful when driving or walking in this area.

MILLARS
- PLUMBING
- GAS FITTING
- DRAINLAYING
- LICENSED BUILDER
Master Plumbers
Ph 027 4340 705 or 03 225 8567

Aaron Cranston Building Ltd
027 252 7933
✓ Renovations
✓ Extensions
✓ New Builds
✓ Sheds/Farm buildings
✓ Decks
✓ Pre-purchase house
Inspections
Call us for any building requirements
Ph 027 252 7933 email: aaroncbltd@gmail.com



George Harpur, SDC Councillor, Waiau Aparima Ward

Greetings to all from a rather wet and cool environment, keep the fire or the heat pump going, stay warm and safe.

On the local scene you will have noticed some footpath upgrades being done on Orawia road with some water upgrades to follow as and when the weather permits.

I recently took the opportunity to travel from Rarakau to Stony Creek at the invitation of one of the hut owners. I was surprised to see and be updated on the statue of the road, which passes through some eighteen private ownerships. The principle being Rarakau who farm the incorporation and have a large investment in the surrounding property and own the land that the first four kilometres (approximately) pass through. The road is maintained by the hut owners and is funded principally by the donation box at the gate and fees gathered from the hut owners. So, if you, as a private individual or hunter, wish to use this route please give your donation at the box at the gate when you are opening or closing it and remember to obey the speed limits as if any serious incident subject to health & safety occurs the adjacent land owner may be held responsible. This may result in serious repercussions as to access.

On the council scene, apart from the ongoing rates saga we have the three waters proposal and the areas of natural significance reviews taking place, the latter is raising concerns from land owners who are very concerned with some of the possible implications referred to.

There is also a submission process being held by Environment Southland closing on 4 June 2021. They control much of our storm water and other water consents, effluent ponds etc. If you have issues please submit them.

Great to see some of the local clubs being active in local fundraising to assist their activities. \$2000 for an evening's work is really a great effort. Congratulations and let's hope it leads others to follow. Some already do.

That's me for now. Cheers to all.

Phone: Anita Green 027 506 2418
Tuesday 9-5pm, Thursday 10-8pm, Friday 10-5pm - Appointments are encouraged.

CHAMBERS REPAIR SERVICE

45 Half Mile Road, Tuatapere

Ph: (03) 226 6654

- 24 hour Self Service Fuel
- Full Mechanical Workshop
- Agents for Wide Span Garage
- NZ Post Centre
- Your Local Fish & Game Agent



Duck Shooting Season
Duck Licences Available



Cost: Adult \$98, Junior \$23, Child \$4

Daily Limit per day

(after Opening Weekend)

10 Mallard, 6 Paradise, 5 Black Swan

Day Licences now available!



PASTURE METER READING THAT'S QUICKER
AND EASIER, WITH AT THE GATE REPORTS

- Specialist in quality pasture meter reading with advanced sensor technology
- Provide 200 measurements per second or 18,500 readings over a single 500m pass
- Provides a fully integrated electronic support system
- Provides a secure web-based storage of information with easy access
- Prompt generated feed wedges for rapid decision making and seasonal comparisons
- Generate reports at the gate, supplying valuable pasture cover data and comparable results every time
- Improve heath & increase animal hydration
- Enhance production & improve water quality
- Reduce bacterial/algae contamination of trough water

**CLEAN TROUGH WATER MEANS
IMPROVED LIVESTOCK HEALTH**

Now 2 bikes
available
for pasture
metering



Brett George • P 027 351 3408
E platemeterservices@gmail.com

by George Charlton

404978 Squadron Leader Raymond Johnson Watson DFC (Distinguished Flying Cross)



Continued from last issue ...

He recrewed during October and in November converted to a Sterling four-engined aircraft at No 1657 Conversion Unit, Stradishall and afterwards joined No 75 (NZ) Squadron at Mepal in Cambridgeshire as a flight commander. On the 1st December, from this base as Captain of a Stirling aircraft, he took part in a further eight operational flights. These included sea mining sorties to the Frisian Islands off Denmark to Bayonne in France, and in Kiel Bay, off shore from Germany and Denmark. It also included special supply dropping flights over enemy territory.

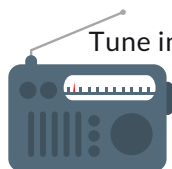
Squadron Leader Watson was the pilot of a Stirling aircraft engaged during the night of the 4th/5th March 1944 in a special supply dropping operation in the Puy-de-Dome area of central France. The aircraft failed to return to its base and all of the crew, including Squadron Leader Watson, were classified as missing.

In due course his death was officially presumed to have occurred on the 5th March 1944. A post war casualty search revealed that the aircraft had crashed into a mountain side near Rocheford-Montagne in the Puy-de-Dome region and that Squadron Leader Watson had lost his life in the crash.

He was buried in the cemetery of Des Carmes, Clermont- Ferrand in France.



**For Sale: Large dog kennel with run.
\$500 - Excellent order.
Phone Mossie (03) 226 6065**



Tune into Tuatapere's very own Radio Station

88.2 FM - Tui FM!

Hits of the 80's & 90's and
today's current music!

Waiau Town & Country Club

**Meals (homemade goodness)
available Thurs, Fri, Sat & Sun
evenings from 4pm to 9pm.**

Family Friendly | Happy to cater for dietary requirements.
Please pre-book for groups of 8 or more.

Club Opening Hours:

Mon - Thurs 4pm till close.

Fri 3pm - close.

Sat Noon - close.

Sun 3pm - close.

**Book now for a mid-winter
functions/birthdays etc**

We can cater! Just call to book.
Ask for Gary to discuss your options.

What's on at the Club:

***STEAK NIGHT, STEAK NIGHT** - every Thursday
night - only \$25 for a delicious steak meal.

***Western District Hoedown** - Sunday 13th June
- kicks off at Noon.

***Emma Wright presents** - Thursday 24th June,
7.30pm - an evening for parents of toddlers to
teens. Tickets \$25. Purchase them online at
www.emmawright.co.nz/parent-talks/
(Book now for dinner beforehand.)

****WTCC AGM****

Sunday 27th June at 2pm

Nominations needed for the committee.

Nominations close

Saturday 12th June at 6pm.

Contact the club for more information.

*** MEMBERS DRAW & RAFFLES**

drawn every Friday night! Approx. 7.30-8.30pm.

**Keep an eye on our Facebook Page for
more details on upcoming events**

Annual membership/subscription

Annual membership is \$50 or \$30 for pensioners.
Want to become a member, pop into the club & sign up!
Or email or call us.

Phone: **03 22 66 489** | Address: 41 King St Tuatapere
Email: waiautcc@gmail.com | Facebook: [facebook.com/waiautcc](https://www.facebook.com/waiautcc)
| Courtesy Van Available |

We look forward to seeing you!

The following is an article written by Southland journalist and historian FWG Miller, who wrote in the Southland Daily News. This article was published on October 27th 1956.

'The hole in the bush' is what they used to call Tuatapere and next Saturday Tuatapere and the surrounding district, including Papatotara and Happy Valley, will celebrate Southland's centenary and their own half centenary. Papatotara is by far the oldest settlement in the Waiau District and it was from Papatotara, on the western bank of the Waiau, that the township of Tuatapere came into being. Gradually, with the growth of farms and sawmills workers began to build their homes on the eastern bank of the river and then a shop was built and operated by James Templeton.

The sawmills came closer in and roadmen, who worked on the settlement at Te Tua, began to congregate so that by the time a road was put through Tuatapere had taken on a character of its own- a dubious sort of character for a start because it was always referred to by outsiders as 'The hole in the bush'; and that was all it was in fact. On all sides the bush crowded in as if resentful of this scar in its pattern. The town began to grow fast and the hole widened, making room for more shops.

In 1911 there arrived a man who was to play a prominent part in the life of the community. George Charlton first came as manager of Meredith's Store at 3 pounds 10 shillings a week and later bought Sneyd's Store. He built up a flourishing business and was an enthusiastic supporter of all local causes. His widow, Mrs Charlton, still lives in the same home where they spent all their married life and to her Tuatapere is the centre of the universe. "I came here from Orepuki when I was first married", she said "and people pitied me for coming to such a hole in the bush, but Tuatapere is where my heart is and in Tuatapere I will stay. Being a small town Tuatapere was often in danger from fires, especially about New Year time when the hole in the bush was ringed with smoke from the fires that were lit by the farmers as they cleared their land."

Mrs Charlton can remember many occasions when they were all packed up and ready to leave at a moment's notice, as the flames roared towards the settlement and people waited in terror while their menfolk fought off the fires. For days on end a pall of smoke would hang over the town and the sun would rise like a burnished ball seen through a dark glass. The smoke penetrated everything-into drawers and cupboards tainting the food and clinging to clothing. Once the flames reached and consumed the Oddfellows Hall in one gulp and then moved on to the Public Works Camp. Everyone was prepared for a hasty evacuation and the children had already been sent away. Fanned by a howling nor'wester the fire devoured everything in its path and, just as some big logs at the back of the garage were smouldering and throwing a cloud of sparks, there was a providential wind change accompanied by a heavy downpour of rain and once again Tuatapere was saved. That night George Charlton was carried home and put to bed suffering the effects of smoke in the lungs.

Emma Wright presents

Raising Body Confident Kids

An evening for parents of toddlers to teens

JUNE 24

\$25

7.30 pm
Waiau Town & Country Club
TIX at: www.emmawright.co.nz/parent-talks

"I wanted to make sure I wasn't passing my negative body issues to my daughter. I got 50 much more than I expected! I can say it's changed our lives."

Book your pre event 3 course dinner at the club \$30
Call Gary on: 027 698 8360



Raising Body Confident Kids

WANTED

Casual Dairy Farm Worker Pahia

180 cows 24 bale hb shed
Super clean shed
No experience needed - happy to train right person!

Start August 2021
No housing available
Phone Tony (03) 234 5154



BEN MCMASTER BUILDING

Ph: 027 202 7955
benmcmaster@live.com

- Licensed Building Practitioner
- Sheds, renovations & new homes
- Based in Western Southland

You dream it, we'll build it

For all your fencing requirements

WESTERN FENCING

SHEEP | DAIRY | DEER



Call BEVAN 0277 413 213

**SAVE
THE
DATE**

Sunday 4th July

at the Waiau Town & Country Club, 4pm onwards

**SAVE
THE
DATE**

TUATAPERE & DISTRICTS PROMOTIONS INC IS PROUD TO HOST OUR VERY FIRST

Winter Wonderland Community Pot Luck Dinner

EVERYBODY IS WELCOME!

Bring your favourite dish to share!

Enter the Winter Wonderland Decorated Cake Competition!

We've got a special surprise for the kids!

FULL TIME CALF REARER

Where:

Alister & Jo Sanford,
692 Clifden Blackmount Road



When:

Starting approximately
10th August 2021 – 30th October 2021

Experience is preferable however not essential as you will be working alongside one other team member.

We will provide you with a safe, fun and friendly work environment.

In return we expect reliability, good attitude to learning and working.

We have a known history with treating staff well and paying fairly.

Please contact **Jo 027 295 029**



Experienced Sawyer / Tailor out

Lindsay & Dixon is a fully integrated forestry, sawmilling and wood processing company located in the rural township of Tuatapere, Western Southland. The company specializes in FSC certified native Beech with over 12000 hectares of forest under MPI approved sustainable forest management.

We have a position available in our sawmilling operation for an experienced sawyer / tailor out with the key attributes for the role as follows:

- Sawmilling experience from within the wider industry with full training specific to the native timber operations available if required.
- A sound work history with good attendance and reliability is essential.
- Physically fit, healthy and able to undertake the manual work required.
- A total commitment to health & safety in the workplace and a willingness to work and contribute fully within a small team environment.
- A clean record, drivers license and pre-employment drug test will be required.
- The company is currently working flexible hours based around a 4 day week with the option for increased hours in other divisions of the business providing an interesting and variable role.
- A full company profile is available on www.lindix.co.nz

In the first instance please contact our operations manager John Templeton to discuss this employment opportunity. Ph 021 879732 or email john@lindix.co.nz



DAGWOOD DAGGING

Available now to all new and existing customers for all your crutching requirements.

3 Stand or Single trailer available
7 days a week, wet or dry.



No job too big or too small.

Competitive rates

Jeff Chambers

027 3042 241

Southland Community Law Centre 5 Tay Street, Invercargill

Phone: (03) 214 3180 Fax: (03) 214 3170

Freephone: 0800 550 800

(outside Invercargill city only)

**Free Legal Information &
Advice for the Community
of Southland**



SIMPLY SOOTHING
Soft tissue pain and tension release

ANN SUTHERLAND
Certified Bowen Practitioner

2475 Ohai-Clifden H/way
Orawia R.D. 2
Southland 9682

phone 03 225 5716
Fax 03 225 5716

Bowen Therapy is a gentle soft tissue manipulative therapy. Through manipulation, tension in soft tissue is released reducing pain and restoring movement and mobility. Also offering Scenar Therapy.



Chicken and Orzo Bake

This is a great one pot dish for those days you need something quick and easy. Orzo pasta is about the same size as a grain of rice and has a lovely texture, which holds sauce beautifully.

Ingredients

- 2 teaspoons olive oil
- 3 skinless chicken breasts
- 1 large onion sliced
- 2 garlic cloves sliced
- ½ cup white wine
- 2 cups of chicken stock
- 2 tablespoons tomato paste
- 1 can chopped tomatoes
- ½ sliced red pepper
- 2-3 sprigs rosemary, chopped
- Juice and zest of one lemon
- 175 grams orzo pasta
- 1 teaspoon honey



Method

Turn on the oven to fan bake 180c. Heat oil in a large, heavy pan, and then fry the chicken in two batches until golden on both sides. Remove chicken from the pan and set aside.

In the same pan, saute the onions until softened. Add the garlic and cook for another minute. Pour in the wine and cook for another minute.

Add the chicken stock, tomatoes, tomato paste, red pepper, rosemary, juice and zest of one lemon and honey. Return the chicken to the pan. Cover and place in a preheated oven and cook for 20mins.

Then, add the Orzo. Return to the oven for 15 to 20 mins, until the pasta is cooked, stirring regularly to prevent sticking.

Season with salt and pepper. Enjoy with fresh bread.



HARRY'S

MACHINES

EARTHWORKS

027 304 3714




* 13 Tonne Digger * 5.5 Tonne Digger * 2.7 Tonne Digger- dry hire or operated
 * Tip Truck * Bob Cat * Augers * Post Driver * Tree Saw & Hedge Trimmer

* Tree Trimming * Post Driving * Fencing * Cleaning of Wintering Sheds * Site Clearance * Cartage * Gravelling * Lane Maintenance * General Earthworks

For all enquiries and bookings please contact Lance or Alice Harris
 Lance: 027 304 3714
 Alice: 027 270 0363
 Email: lanceharris533@gmail.com
 Check us out on facebook- Harry's Machines

MOUNTAINS EDGE CABINS MONOWAI

Hunting, Fishing, Mountain Biking,
Kayaking & Tramping
Cabin Accommodation



12 Cabins
Double and Single Available
\$35.00 per person per night

Eftpos available
 Full Kitchen Facilities, Showers, Toilets, Playground
 & the Tennis Courts right across the road!

We are 'pet friendly'

75 Turbine Drive, Monowai. Ph. 03 225 8267

www.mountainedgescabins.com
 Email: mountainedgescabins@gmail.com



MR STEEL

TUATAPERE

PH: 027 276 6816

MALCOLM

**For all your engineering,
steel fabrication and repair needs!**

FORDE SHEARING LIMITED

Available for all new and existing clients

For all your shearing and
crutching requirements

Please phone Darin or Julie Forde

(03) 235 8853
027 229 7760

Introducing:

Selina Copland

Your new Nutrient Specialist in Western Southland following Gary Kirkman's retirement.



Selina has been with Ballance for 7 years, starting in Central Southland before a Key Accounts role covering Otago/Southland. Living in the heart of her new region, Blackmount, for the last 2 years she's got to know the area and many of you in it.

Selina grew up on her parent's irrigated mixed farm in Ashburton and still loves getting back to help out. Studying at Lincoln University and working on various farms sparked her passion for agriculture and she combines her practical, agronomy and financial knowledge to find the best fit fertiliser plan for her clients.

If you have any inquiries, testing or would like to work through a fertiliser plan for your farm please don't hesitate to get in touch.

Contact Selina on **027 433 8416** (Gary's old number) or her email address is **selina.copland@ballance.co.nz**

Tui Base Camp



**Open from 8:30am
every day!**

Upcoming Events

- ★ **Oysters Available**
- ★ **Sunday Pool - 2pm every week
(guaranteed \$100 first place)**
- ★ **Every Thursday Happy hour 5.30-6.30pm
& Free Pool all day**
- ★ **Friday Dinner Special - Indian Curry**

For all of your dine in and takeaway requirements including:

- In-house roasted Amore Coffee
- In-house made pies, sausage rolls,
cheese rolls
- Range of breakfast options
- Packed lunches
- Catering

Phone: (03) 226 6250

www.tuibasecamp.co.nz





WINTER WARMERS... AT THIRSTY LIQUOR

<p>Not Stocked</p> <p>Jim Beam Gold CC Premium 7% 330ml 6pk cans</p>	<p>\$19.99 EACH</p> <p>Barrel 51 / Tui & Soda 5% 12pk bottle range</p>	<p>\$21.99 EACH</p> <p>Cruiser 12pk bottle range</p>	<p>\$22.99 EACH</p> <p>Jim Beam & Cola/CC (incl zero) 4.8% 10pk cans Jim Beam Gold 7% 8pk cans</p>	<p>Not Stocked</p> <p>ODD Company 10pk can range</p>	<p>NEW PRODUCT Not Stocked \$23.99 EACH</p> <p>Major Major 10pk can range</p>
<p>Not Stocked</p> <p>Effen Vodka 10pk bottle range</p>	<p>\$26.99 EACH</p> <p>Smirnoff Ice 5% 10pk bottles Coruba & Cola Zero 330ml 10pk cans Coruba & Cola 7% 250ml 12pk cans</p>	<p>\$29.99 EACH</p> <p>Cody's 7% 18pk cans</p>	<p>\$32.99 EACH</p> <p>Woodstock 7% 250ml cans 5% 330ml bottles all 18pk</p>	<p>Not Stocked \$23.99 EACH</p> <p>Jack Daniels & Cola 4.8% 330ml 12pk bottles</p>	<p>\$38.99 EACH</p> <p>Long White 15pk bottle range</p>
<p>Not Stocked \$11.99 EACH</p> <p>Taylors Promised Land range</p>	<p>Not Stocked \$12.99 EACH</p> <p>Stoneleigh Marlborough / Lighter ranges</p>	<p>Not Stocked \$18.99 EACH</p> <p>Villa Maria Private Bin range (ex PN/Syrah)</p>	<p>Not Stocked \$13.99 EACH</p> <p>Arrogant Frog range Da Luca Prosecco</p>	<p>Not Stocked \$13.99 EACH</p> <p>19 Crimes range</p>	<p>\$14.99 EACH</p> <p>Wither Hills range (ex reds)</p>
<p>2 FOR \$25.00</p> <p>Canterbury Cream</p>	<p>\$35.99 EACH</p> <p>Malibu / Kahlua (incl salt caramel) 1L</p>	<p>\$36.99 EACH</p> <p>Blackheart / Woodstock 1L</p>	<p>\$36.99 EACH</p> <p>Gordons Pink / Sicilian Lemon 700ml Gordons & Smirnoff 1L</p>	<p>\$38.99 EACH</p> <p>Jack Daniels (incl Honey, Apple & Fire) El Jimador range (Ex Anejo) Old Forester all 700ml</p>	<p>Not Stocked \$38.99 EACH</p> <p>Haymans London Dry / Old Tom / Sloe Gins 700ml</p>
<p>\$40.99 EACH</p> <p>Absolut / Ballantines Beefeater 1L</p>	<p>\$46.99 EACH</p> <p>JB 1.125ml / JB Devils Cut / JB Black 1L Makers Mark 700mls</p>	<p>\$49.99 EACH</p> <p>Malfy 700ml range Jameson 1L</p>	<p>Not Stocked \$50.99 EACH</p> <p>Tanqueray 1L & Flavoured 700ml range</p>	<p>Not Stocked \$55.99 EACH</p> <p>JB Double Oak 1L Haku Vodka / Roku Gin 700ml</p>	<p>TWO FOR \$100</p> <p>Jagermeister / Mt Gay Eclipse 1L Tito's 750ml or \$52.99 each</p>
<p>Not Stocked \$99.99 EACH</p> <p>Chi Chi Chivas Regal 10yr 389.99 all 700ml</p>	<p>Not Stocked \$11.99 EACH</p> <p>Kingfisher Strong 6pk cans</p>	<p>Not Stocked \$11.99 EACH</p> <p>Tiger / Tiger Crystal 12pk bottles</p>	<p>Not Stocked \$14.99 EACH</p> <p>Orchard Thieves 12pk range</p>	<p>\$22.99 EACH</p> <p>Somersby 12pk bottle range</p>	<p>\$24.99 EACH</p> <p>Heineken 12pk bottles</p>
<p>Not Stocked \$25.99 EACH</p> <p>Monteiths Batch Brewed (ex classics range) 12pk range</p>	<p>Not Stocked \$25.99 EACH</p> <p>Carlsberg 15pk bottles</p>	<p>\$26.99 EACH</p> <p>Tui/Export Gold/Extra/DB Draught 15pk bottles</p>	<p>\$26.99 EACH</p> <p>Export 33 15pk bottles</p>	<p>Not Stocked \$31.99 EACH</p> <p>Haagen 24pk bottles</p>	<p>\$36.99 EACH</p> <p>Lion Red / Waikato / Speights Summit or Low Carb 24pk bottles</p>
<p>Not Stocked \$40.99 EACH</p> <p>Asahi 24pk bottles</p>	<p>Not Stocked \$41.99 EACH</p> <p>Steinlager 24pk 330ml bottles</p>				

Promotion period between 1/06/2021 to 30/06/2021. While stocks last. Promotion only available at participating stores. Please contact your local store to confirm whether they are participating in the promotion and check the pricing in-store prior to purchase. Online pricing will vary.



100% **NEW ZEALAND** OWNED AND OPERATED
thirstyliquor.co.nz

FOLLOW US ON SOCIAL MEDIA



ASK ABOUT
LOYALTY CARD
BENEFITS &
GIFT VOUCHERS



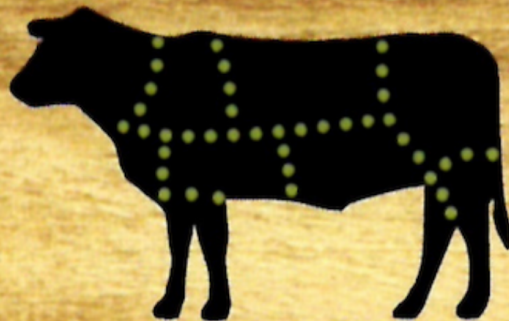


**We are ready to process your
recreational-hunted game
from the Roar or from
Duck Shooting!**



Wayne & Rachel Saunders
Qualified Butcher
rawfarming@yahoo.co.nz

027 457 6350
82 Clifden Highway
Tuatapere



Cut up the way you want

Beef

Pork

Sheep

Venison

Other game meats

Traditional Smallgoods

Ratty Says ...

Waiau Memorial Library



Who likes worms? I do! Short ones, tall ones, fat ones and skinny ones. I love how they squiggle and squirm.

I've been learning about gardening. The library has this really cool book called "The Abundant Garden", it's written by Niva and Yotam Kay. Guess where they live? New Zealand! The book is all about Regenerative Gardening and how you have to look after the soil. They tell how to do it all, from designing your garden all the way to preserving what you produce. It was very interesting and I enjoyed it so much that I decided to become a gardener.



My very first job was to build a worm farm. It took me ALL day. It's hard work for a little Rat. First I had to take everything out of the box, then I had to read the instructions.

That took forever. I put everything together before I got the boxes ready for the worms. I had to soak some coconut stuff in water so it could get all big and fluffy. That's where the worms go to bed. Then I put the worms in their farm. They tickled when they squirmed all over my paw. I nearly fell into the worm farm!

When all the worms had made themselves comfortable I covered them with some damp cardboard because they like to have a blanket and be in the dark. Do you know what they did to the cardboard? They ate it! Worms also like to eat food scraps which is really handy when you have leftovers. Then they turn it into compost and that helps make your plants grow big and strong. Everything worked properly when I built the worm farm. Why? I read the instructions first.

Now all I have to do is decide what to plant in my garden ...



PLEASE HAVE YOUR ARTICLES, NOTICES, OR UPDATED ADVERTS FOR THE WESTERN WANDERER SENT IN BY
20th of JUNE (for July's Issue)

Lindsay Stephenson
Dip Phty, Dip MT, Reg Acup, P3 Dip Rehab, MNZCP (pain management)

Andrea Murray
Dip Phty, Dip MT

Alana Makolm
BPhy, BPAEd, Reg Pilates Instructor, PGCert (acup), Reg Acup

See the friendly team for help with...

- Back and neck rehabilitation
- Sports injuries
- Dizziness
- Chronic pain
- Occupational health
- PING/Steel Pilates for cancer survivors
- Breathing disorders
- Exercise programmes

Invercargill clinic open late nights
ACC available
Weekly satellite clinics in Tuatapere and Ohai

60 Deveron Street, Invercargill
P 218 6583 F 218 4105
E office@acceleratephysio.co.nz
www.acceleratephysio.co.nz

CANTERBURY CARS
4WD Specialists

For all your vehicle requirements

Cars, utes, 4WDs, vans

Finance available

Contact: Murray Dowling
027 556 2655

Visit our website
www.canterburycars4x4.co.nz

Specialising in
Dairy Conversions
Rural Fencing
Post & Rail

H Gill Fencing, Eastern Bush
Phone 021 225 5489
After Hours 03 225 5488
Email hamish@hgillfencing.co.nz

Fencing Contractors Association of New Zealand



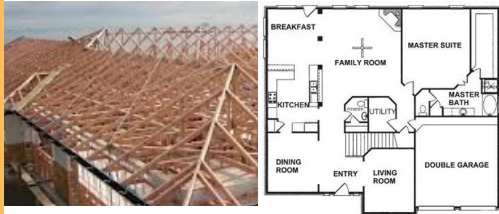
Agricultural Contractors servicing Western Southland and beyond.

BALAGE - SILAGE - GROUNDWORK - FEED TRADING
Nigel 021 226 6156 / fowlecontracting@gmail.com

PAUL ANDERSON BUILDER

AVAILABLE FOR ALL YOUR
BUILDING REQUIREMENTS.

NO JOB TOO SMALL.
COMPETITIVE RATES.
REFERENCES AVAILABLE!



Mobile: 027 890 3602
thetakis@outlook.com



C: 0274 247 102

T: 03 225 8652

E: admin@drakeplumbing.co.nz

KIERAN DRAKE
Certifying Plumber
& Drainlayer



MR STEEL
TUATAPERE

PH: 027 276 6816
MALCOLM

For all your engineering,
steel fabrication and repair needs!

FORDE SHEARING LIMITED

Available for all new and existing clients

For all your shearing and
crutching requirements

Please phone Darin or Julie Forde

(03) 235 8853
027 229 7760

Painting & Handyman Services

Experienced Painter

I can help with all sorts of odd jobs too!

Gardening
Lawn mowing
Tree & Hedge Trimming
General labouring



Phone **Luke Wikstrom 027 2773 925**

For all your Accounting and Tax Solutions

Ask for Janice or Trevor England

 **03 2266110**

Aparima Accounting Ltd
57 Main Road Tuatapere



JOHN TIMPANY Craftsman

022 046 1402

7 Settlement Road
Papatotara
Tuatapere, Southland

Furniture
Native Timber & Timeless Design
Signs Carved & Shapes Shaped
Small Structures Erected

PROPERTIES WANTED!

Contemplating selling? You might
be surprised by what your property
could fetch on today's market

Contact Julie today for a free appraisal and
to discuss how you could take advantage of
this buoyant property market



Julie Guise

021 256 4164

julieguise@sre.co.nz



SOUTHLAND REAL ESTATE LTD
Licensed under The Real Estate Agents Act 2008 MREINZ

**SOUTHLAND
REAL ESTATE LTD**

Licensed under The Real Estate Agents Act 2008

MREINZ



CONTACT US TODAY

Phone 03 221 7192

Fax 03 221 7194



- Excavators for general farmwork
- Laser guided drainage
- Gorse mulching & land clearing
- Lane maintenance
- Conversions
- Effluent Ponds
- Demolition
- 20 tonne bulldozer, roller, grader
- Drain ploughing & alkathene laying

Bucket Honey Cafe

We have

- HONEY
- Great Coffee
- Homemade Pies
- Juice Bar
- Sandwich Bar
- Homemade Icecream

Come in and try our honey!

Phone: 022 0887 993

16 Orawia Road, Tuatapere





We specialise in:

Resource consents

Farm environmental plans

Policy advice

DOC concessions

Landscape plans & assessment

We take care of the paperwork,
so you can do what you do best!

Sonya: 027 5050 077

Rebecca: 027 4246 129

www.slwp.co.nz

Locally owned & operated

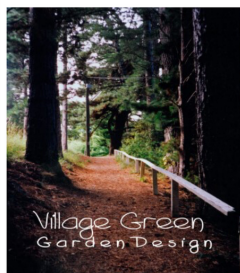
Landscape Garden Design

What do you want
from your garden?

Whether building new or
revamping your existing garden
an overall plan is essential.

Free Initial Site Visit

From a few questions to get
you started, to a full landscape design.



Village Green
Garden Design
Tuatapere

Ph Robert
027 9241 204

WANTED TO BUY

Possum Fur, Hard deer,
Antler, Deer Velvet.

Phone Leith 027 496 3721

CHAINSAW SHARPENING

All chainsaw chain sizes precisely sharpened and
rakers taken down accordingly, guaranteed results

Chain only \$10 Taken Off & Refitted \$13

Please phone (03) 2266940 evenings

TUATAPERE OUTDOORS & HARDWARE

For all your

Gardening tools, lawn care, garden
hoses, insect and disease sprays, potting
and compost.

We have those building requirements for
that weekend job with a good selection of
silicone, nails, screws and bolts.

New fishing rods and reels, fishing lures,
good selection of soft bait,
fishing nets, flounder and eel nets.



Good selection
of giftware.

Come in, check out
what we have.

Contact:

Judy 027 225 8192

Paul 027 890 3602

Shop (03) 226 6363



MATHIESON

ELECTRICAL LTD

ETHAN MATHIESON

M 027 634 7534 A/H 03 225 8891

E mathiesonelectrical@vodafone.co.nz

- Domestic
- Commercial
- Dairy
- Pumping & Effluent
- Heat Pump Installation
- Heat Pump Servicing

INTRODUCING

**STREBEL STRIP TILLER
WITH A KUHN 6 ROW
BEET PLANTER COMBINED
FRONT FERT HOPPER**



STRIP TILLER BENEFITS:

ONE PASS - SAVING YOU MONEY

LESS CULTIVATION = LESS BUGGING

KUHN BEET PLANTER IS ABLE TO SOW SWEDE & BEET



FOR MORE INFO OR TO BOOK PH:

Kahu - 027 5183 448



Kia ora Western Wanderer Readers!

One of the biggest highlights of the Senior school calendar, Area Schools Tournament!

This year's tournament was held by Roxburgh Area School (who were originally meant to host in 2020 but due to Covid was postponed). Our Waiiau students had the opportunity to compete in a variety of sports/activities ranging from quiz to rugby during the three day tournament. We only came away with one overall win which was in badminton pairs, thanks to **Rylie MK** and **Oli** but there were many placings in other sports such as quiz, boys touch and mixed football.



A list of thank you's and congratulations ...

- Our awesome **head students (Sam & Holly)** and **prefects (Marli & Tekoa)** for organising this years 'item' which is performed at the opening ceremony. A special mention to **Marli** for being the leader of the troop
- **Mr Bennett & Miss Quinn** for all of the organising, coaching and managing over the tiring three days
- **Hump Ridge Track (Cedric, George & Charmaine)** for driving as well as the use of a van and the covered trailer
- **Holly** for her managing and coaching skills
- **Josh & Marli** who received the Fair Play awards
- **All students** who put themselves forward to take part in this year's tournament and overcome some personal challenges of taking part in sports/ activities that they wouldn't regularly take part in
- The **six** students who have been selected for the South of the South teams to take part in the National Area Schools tournament in Dunedin during the July school holidays - **Meadow** (Netball B and Volleyball), **Josh** (Football), **Jess** (Football & Ki-o-rahi), **Natalie** (Netball B & Football), **Jack** (Rugby & Football) & **Bruin** (Football & Volleyball)

Please keep an eye out for any fundraising that will be taking place over the next coming weeks to support our students getting to this year's National Area Schools tournament!



Nga mihi, take care and keep safe. Andrew PB

For Landscaping, Lane Maintenance, Gravel Supply & Cartage

GRADES OF CRUSHED & SCREENED GRAVELS, ALKATHENE LAYING, ROOTRAKING, FARM TRACKS, DAIRY LANES



**K J SUTHERLAND
GRAVELLING & AGRICULTURAL CONTRACTOR
2475 OHAI-CLIFDEN H/WAY
ORAWIA R.D2 OTAUTAU 9682
Ph 0274 367 934**

ELEVATOR SCRAPER, BOBCAT & ATTACHMENTS, LANDSCAPING, TRENCHING AUGERS

Supplies of Gravel Ex Waiau River

River Run Screened Grades Concrete Gravel Pea Gravel
Rejects for soak holes Crushed - AP30 and AP65

Peebles for Sheep and Cattle yards and calf sheds
Fines suitable for cow lane capping

K.J. Sutherland Contracting Bobcat T190

**With attachments: Landscape Rake,
Augers and Trencher**

**Suitable for all landscaping, shed and yard
maintenance**

Muck-spreader and tip trailer available



**PHONE KEVIN
027 367 934 / (03) 225 5716**

INDEPENDENT MIDWIFE

ISOBEL DEVERY

*Caring for women throughout
Pregnancy, Birth till six weeks
Post Natal.*

*Choices for place of birth,
Home or Winton Birthing Units
or Kew Hospital.*

*Free pregnancy tests
available on request.*

**Phone: (03) 22668822
027 2267020**

©Peccaro, EthnoGraphics®

WAIAU HEALTH TRUST – June 2021

Medical Centre

Flu Vaccines 2021

Flu vaccines are available now for everyone in our community - and will be through until 31st December 21. If you would like to receive a flu vaccine please call us to make an appointment. Unsubsidised vaccines are \$34.00.

Group 3 Covid Vaccines – We have no details, as of writing this edition, for any arrangements of when & where these vaccines will be managed for our Rural Practice. The most up-to-date information is on the MOH website www.moh.govt.nz

Liquid Nitrogen Clinic is on Wednesday 23rd June – please phone and make an appointment.

We are pleased to have GP Dr Murray Allen working for us again every Thursday through till the end of October. NP Amanda McCracken will be on Annual Leave from 21st June – 9th July. GP Yan Wong is working for us 3 days per week in Amanda's absence.

Practitioner cover is as follows:

Monday: NP Sheryl Eden
Tuesday: NP Sheryl Eden & GP Yan Wong
Wednesday: GP Yan Wong
Thursday: GP Murray Allen
Friday: GP Yan Wong

SAME DAY REPEAT PRESCRIPTION REQUEST:

As advertised in the last WW edition our same day request scripts are now \$28.00. We are doing this as many people have been consistently ringing up giving as little as one hours' notice of needing to collect a script. Our Practitioners are very busy seeing patients every day and they need time to check records & details prior to writing a script. To be fair to all we encourage you to pre-plan and request at least 3 days prior.

Should you have any questions or concerns I look forward to hearing from you.

Kind Regards

Jo Sanford (Manager)

Cell: 0272950429



Waiau Health Trust
69a Orawia Road, Tuatapere
Approved Registered ACC Provider
Monday to Friday
9:00am – 4:30pm
Ph.: 2266123

Practitioner Hours
Amanda McCracken (NP) – every
weekday

Sheryl Eden (NP –every Monday &
Tuesday

Murray Allen (GP)
Thursdays

Liz Scott (GP)
2nd Tuesday of every month

Physiotherapist
Tuesdays & Thursdays
Phone for an appointment

Podiatrist
Visits regularly –
Phone for an appointment

Warts/Minor Skin Lesions
Liquid Nitrogen treatment available
Phone for an appointment

Homebased Maternity Care
We are offering this service in the
patient's home. Please contact Jo
Sanford on 2266123 for enquiries.

Day Activities Programme for
the Elderly
Every Tuesday & Wednesday
Please phone for further information.

District Nursing
Available as required by referral

Welcome to the June Edition of "What's Been Happening?" at....

Kia ora Western Wanderer Readers

Kia ora, Namaraskan, Bula,

We welcome Angela & Daniel to Hauroko Valley Primary School. Also Happy School days to Musa. We look forward to getting to know you and your families.

Well done to Sierra Bennett for her swimming achievements at the Southland Swimming Championships. She competed in the 25m butterfly for Year 6 girls and was presented with an award ribbon as a finalist.

Congratulations to our Ripa Rugby team who represented H.V.P. at one of Rugby Southland's Year 5&6 tournaments. Our team including Sienna McGregor, Lily Cade, Elly Hurley, Erin King, Katie Norman, Oliver Chamberlain, Hugo Gray, George Greer, Cooper Gow and Cormac Legg played with skill and drive, winning all of their games. Thanks to Rob Legg for Coaching, Nikki Willis for Managing, Megan Edgley for transportation and Terrence Waikato for Fitness Training.

We had 6 teams competing in the 2021 Otago/Southland AgriKids challenge. This was online, so was an unusual platform however, engaging with a variety of activities for students to complete. Well done to our Year 7&8 team of Nick Cade, Jack Horrell and Hunter Norman who were placed 5th and to our Year 5 team of Mofid Ali, Tomas Clarke and Sam Horrell who were 9th overall! Tumeke mahi to Jen Templeton for leading our Young Farmers.

Superlative results this week for two Year 8 students who are going to have their pieces of work published. Nick Cade submitted a stunning visual arts illustration that has been selected to feature in Toitoti, A NZ Journal of Young People's Writing. Hunter Norman has written an adventurous tale showcasing local personalities which will also feature in Toitoti. These achievements are outstanding and just go to show through goal setting, perseverance, time management and "do the mahi, get the treats" - what you can achieve!

This Term we are preparing for Cross Country. We look forward to our inter-school cross country with Thornbury Primary School and Waiau Area School. These gatherings strengthen connections and interactions between families and friends.

In our classrooms our tamariki are making the most of learning opportunities throughout the curriculum. Hauroko Valley Primary School's motto of "Always our best/Tonu to tatou pai" rings true as each learner is active in working to progress and achieve in their personal learning journeys. We look forward to catching up with you all soon. Ka kite ano - Julia Waikato, Tumuaki/Principal



Athletes



Agriculturalists



Artists



Achievers

Term 2, 2021 Events

May - Dangerous Decibels, St John First Aid, Discovery Time, Guitar, National Young Leaders Day
June - Wanda Waste Show, Guitar, HVP, Thornbury & WAS, Western & Southland Cross Country, Discovery Time, Grip Leadership, Deep Cove Camp Year 7&8, Matariki, Technology.

Always Our Best/Tonu to Tatou Pai



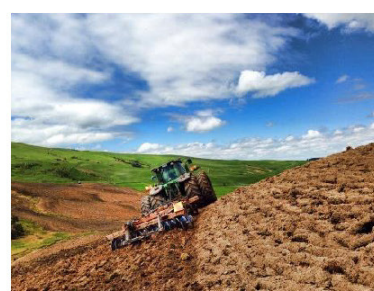
Rabco Ag Ltd – 021 362 766 – admin@rabco.nz
Agricultural Contracting Specialists - Western Southland



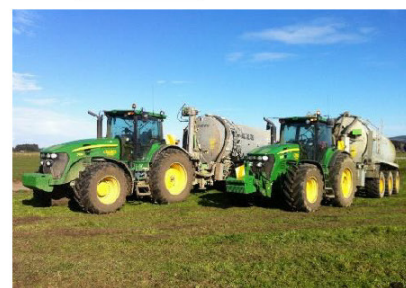
**Full silage
& baling
service**



Cultivation – including Direct Drill & Precision Drill



Effluent – Excavators - Hedgetrimming



Alex Reid CONTRACTING

Paddock Cultivation from
Ploughing to Sowing Dry Hire
available Aerating Direct
Drilling Ridging Mulching



Dairy Lane Maintenance

Tip Trailers • Vibrating Roller • Effluent Services

Sheep Conveyor

Drenching, Vaccination etc • 3 way draft



Rural Contractors
NEW ZEALAND

Large Skid Steer for calf shed cleaning, loading Muck Spreaders etc

4 Muck Spreaders • 16,000 litre Slurry Tanker
• Pond Stirrer • Umbilical Slurry System

PH ALEX 0212775308 CELL
03 2255377 HOME

WAIAU VALLEY SHEARING LTD



Simon de Vries
Julie Heaps

027 840 9867
03 226 6212

WESTERN ELECTRICAL

2008 LTD

Electrical Solutions

Domestic | Industrial | Commercial

Quality Service at Competitive Prices

- New Builds, Rewiring & Alterations
- Dairy Shed, Farm & Industrial Maintenance
- Hotwater Element Replacement
- A/H Call Out Service Provided



Ph 03 225 8974 / 027 439 3787

Fax 03 225 8973



Jacqui and Superior go the extra mile

Are you frustrated with the lack of service from your local fertiliser consultant, peddling the same advice year after year regardless of your production outcomes, environment and sustainability?

Give **Jacqui Chamberlain** of Superior Fertiliser Specialists a call. She will bring whole new meaning to service and client/advisor relationships.

Jacqui is a key member of the highly skilled Superior team totally committed to helping you develop healthier, more productive soils and plants.

We form a specialist fertiliser company that provides high quality advice and products at competitive prices. We have been doing this for South Island farmers and growers for just on 20 years.

Superior promotes a total soil care package. First, we get to understand the make-up, nutrient status and health of your soils, the demands you are going to place on them, and your production goals – before we apply one kilogram of fertiliser.

A comprehensive regime of vigorous soil tests will be undertaken and the results will provide the basis of a Superior Fertiliser Management Plan customised for your unique situation. This will complement your farm's Environmental Plan and provide the blueprint for an ongoing annual fertiliser programme.

We then supply guaranteed-quality solid fertiliser for your pasture and crops, monitor production and other outcomes, and update your Plans as required.



It's free to talk so don't hesitate to give Jacqui a call.
Phone 027 202 0611

Jacqui Chamberlain
Fertiliser Advisor Southland
027 202 0611
jacqui@superior.net.nz



 FERTILISER SPECIALISTS
SUPERIOR
www.superior.net.nz

TUATAPERE SERVICE STATION
20 ORAWIA ROAD
PHONE: 03 2266475

AMMUNITION

Better late than never but all shotgun ammo is now in stock

SPECIAL

Winchester 22 subsonic ammo
Only \$105.00 per brick
or \$12.00 per packet



HARDWARE & TOOLS IN STOCK

Nails, screws, tec screws, bolts and nuts, dyna bolts, pulleys, karabiners, hinges, padlocks, rope, chain, hammers, pliers, screwdrivers, saws, spanners and much more

WHITEBAITERS

If you are wanting any special nets ordered in please let me know and we can order now for July delivery.

