



WESTERN Wanderer

Tuatapere | Clifden | Orawia | Blackmount | Monowai | Colac Bay | Orepuki

Cover Photo Credit: Louise Greber

Issue 233

At a glance ... what events are on this month?

MAY 2021

MONDAY	TUESDAY	WEDNESDAY	THURSDAY	FRIDAY	SATURDAY	SUNDAY
26	27	28	29	30	1 Duck Shooting Breakfast Tui Base Camp	2
3 Term 2 Starts	4	5	6	7	8	9 Mother's Day!
10	11 Power Outage 9am-3pm Teacher Only Day WAS	12	13 Mums & Bubs Coffee Group Anna Thompson Visit/Talk 12pm	14	15 Last Market Day! 10am Tuatapere Presbyterian Church	16
17	18	19 Tuatapere & Districts Promotions Inc Meeting 7pm WTCC	20 Soup & Chat Tui Base Camp 11:30am Notices, events, adverts etc in to the WW for the June Issue	21	22	23
24	25	26	27	28	29	30 Pink Ribbon Brunch 11am WTCC
31	1	2	3	4	5	6

Special thanks to



It has taken a lot of time (just about a year), effort (applying, discussing, designing and executing) and money (grant) to get this new sign up in Tuatapere.

On the 31st of March it all finally came together (not without a few hiccups) and now it's sparkling bright when you enter or leave Tuatapere via the main road. The old sign was taken down very carefully and has been safely stored for prosperity!

Thank you to the Amenities Trust who granted us the money to make it happen. Special thanks to Stuart Vaughan for his time and his tractor, Tuatapere Service Station for their help in solving the little installation problem, Summer at PGG for the kind offer of assistance should it be needed and Bede McKenzie for his time and efforts as well.

We hope you love the new sign as much as we do!



HANDY PHONE NUMBERS



EMERGENCY
POLICE / FIRE / AMBULANCE: 111

MEDICAL CENTRE: (03) 2266 123

TUATAPERE POLICE STATION:
(03) 2269 020

TUATAPERE COMMUNITY WORKER:
027 757 5983

HAUROKO VALLEY SCHOOL OFFICE:
(03) 2266 753

WAI AU AREA SCHOOL OFFICE:
(03) 2266 285

TUATAPERE CEMETERY TRUST:
(03) 2266 065

CHAMBERS SERVICE STATION:
(03) 2266 654

TUATAPERE SERVICE STATION:
(03) 2266 475

TUATAPERE FOUR SQUARE:
(03) 2266 898

TUATAPERE OUTDOORS & HARDWARE:
(03) 2266 363

The Otautau Bowling Club

is selling Pea Straw
again this year.



\$10 per Bale

Pick up point will be in Otautau

Contacts:

Shirley McCully - Home: (03) 225 8605

Cell: 021 152 2046

Jan Lowrey - Cell: 027 220 2403

Robyn Clarke - Cell: 027 220 8160



PLEASE HAVE YOUR ARTICLES, NOTICES, OR UPDATED
ADVERTS FOR THE WESTERN WANDERER SENT IN BY
20th of MAY (for June's Issue)

Pink Ribbon Brunch

Waiau Town & Country Club
30th May 2021
11am

Guest Speaker!
Raffles!
Dress in Pink!

Tickets \$30



Contact

Coke MacCracken 021 351 181

Karen Lord 027 343 6004

WTCC 03 2266 489

Poppy Day Collection

**Tuatapere Returned
Services Assn**



A big thank you to all of those who supported us with the Poppy Day collection this year. If there was anyone who did not get to participate with a donation or we missed you when we called at your house, please feel free to donate to us via internet banking; Account details are:

Tuatapere Returned Services Assn

AC number: **06 0958 0007999 00**

In the reference column please put

'Poppy Day'

These donations help us subsidise Medical Centre visits for those in need and also helps fund the Christmas presents at the Christmas Parade, plus various other activities within the district. Many thanks.

All enquiries to
John Munro 027 412 2925

Tuatapere Lions Club

John Knowler



Greetings to all from the Tuatapere Lions Club - a quieter past two months but the winter term brings on our busiest time.

The Borland Youth Leadership course instigated by a few local Lions Clubs quite some years back will be over for 2021 by the time this goes to print. The planning behind the course was to build confidence in the attendees and is open to youth 16-20 years in the April holidays each year. This course is approximately five days under the guidance of registered instructors - the cost is approximately \$700 each but most Lions Clubs make a quite substantial donation toward the cost. This year Josh Thomas and Liam Pierce from Waiau Area School are attending. Part of the package is that they are required to speak on their experiences to their local club. As the name suggests the course is held at Borland Lodge and this complex was the original camp of the personnel responsible for the formation of the road from South Arm to the lodge and the erection of the towers that takes the electricity from West Arm Power Station to the Tiwai Smelter.

Club donations included Waiau Area School application to enable pupils to attend Camp Columba at Pukerau; Catering for a car rally that was in town on Thursday 22 April and the Senior Citizens Annual Dinner.

On the social side the bowls game against Ohai/Nightcaps Lions saw a win to the visitors. Riverton Lions are in the town for the annual "River-Tua" Shield Challenge and our members will have to be on our game to counter the "win at all costs" style of play by the visitors - but it will be an enjoyable night. The annual hay drive is Friday June 11th and although Mother Nature has been kind to our area it is quite different further north.

The Ambulance Shed is nearly complete and it aligns nicely with the Medical Centre. Sincere thanks to all the contractors involved and especially the Lions committee who have spent endless hours dealing with the problems.

If you would like to become a member, or want to come to a tea meeting to see how we operate, please feel free - contact any Lions member - you would be most welcome.

The club members offer their sincere condolences to David Peek and family on the passing of Lynda. Both were members of the Lions movement - David in the men's club and Lynda was a member of Tuatapere Women's Club.

BEWARE! IRD EMAIL SCAM!

Please be aware that there is a very convincing email being sent out about receiving a healthy tax return. Several Tuatapere & Districts residents report having received this email already. The content seems genuine with the IRD's correct logo.

The IRD department has confirmed that this is a scam and they would appreciate it if you could forward the email to phishing@ird.govt.nz

RD PETROLEUM & CHAMBER REPAIR SERVICE

Due to a planned Power Outage by the Power Company, **11 May 2021**, we will not have any power from 9am - 3pm. Chambers Repair Service will be closed all day.

DOGS OFF LEASH & DOG FAECES

As I have been a resident in this area for 60+ years I am extremely disappointed in the people who choose to ignore the signs all around the town and especially in our lovely domain that is an icon to Tuatapere, that dogs must be on a leash at all times and asks you to pick up your dog's faeces.

This is definitely not happening even at our beautifully kept cemetery and someone even goes to the trouble to open the gate into the orchard but can't be bothered to pick up their dog's faeces (and this is not a small dog). Your dog is definitely not on a leash or under control when you are driving around behind it down the domain. Bags are supplied down the domain and the bags you get your bread in are also very useful to use.

One of the reasons NZ is trying to ban freedom camping is because of faeces etc left by people but I can see NO difference in animal faeces to human faeces. You people know who you are so PLEASE consider the people who are keeping our beautiful town neat and tidy, some paid and some volunteers, by cleaning up your dogs faeces.

~ Dawn Egerton

DO YOU HAVE SPARE TIME DURING THE DAY?

Would you like to have a cuppa, chat and play chess, checkers and/or dominoes.

If you are interested please contact
Keri Potter **027 7575 983**

NEED A JP?



The following Justices
are available
by appointment:

Tuatapere

Keri Potter 027 526 3137
Donald Egerton 027 432 5407

Te Waewae Bay

Shirley Whyte 027 504 5220

Blackmount

Nicky Baker 0276435880

WESTERN SOUTHLAND WOOLCRAFT GROUP

Spinning, Felt, Weaving, Knitting,
Crochet. Other crafts welcome!
1st Wednesday of the month.
10am - 3pm. BYO Lunch.
For details please contact:
Helen Todd 022 378 9743



TUATAPERE & DISTRICTS LIONS CLUB PROJECT



SUPER DIRT

Super dirt bags are now
weighed so more in each bag!
\$8 per bag - ready for your garden!

Super dirt can be collected from:
Cracks Yard, Grove Burn Road,
in the mornings Monday to Friday.
Weekends by arrangement.

Delivery by arrangement - (but not
guaranteed)

Phone Trevor (03) 225 5864 or
Stephen (03) 226 6817



TUATAPERE COMMUNITY WORKER

Room 5 Medical Centre
69A Orawia Road

Monday - Thursday 10am to 3pm

Keri Potter **027 757 5983**

Email: tcworker@xtra.co.nz



WAIAPU MEMORIAL LIBRARY

Library Hours: Fridays

10:00am - 11:30am

2:30pm - 4:00pm

7:00pm - 8:00pm

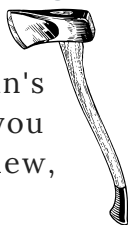


The Library now has Wi-Fi. Available free to all library members. Just ask one of our friendly volunteers to help you set up your device.

TUATAPERE BUSHMAN'S MUSEUM

Orawia Road. If the Bushman's Museum is not open when you have visitors who wish to view, you can contact:

Lindsay Faulkner (03) 226 6650 to arrange a suitable time.



TUATAPERE ENVELOPES

Envelopes printed with the "Tuatapere on Nature's Edge"

Logo can be purchased at Country Corner Craft Shop
1A Orawia Road

Cost \$3.00 per 10



TUATAPERE MAINLY MUSIC

A pre-school music and movement-based playgroup.

Mondays during the school term at the Tuatapere Presbyterian Church Hall.

Music session starts at 10am followed by a time of morning tea and play. \$2 per family.

Morning tea is provided for all.

New families welcome!

Find us on Facebook:

"Tuatapere Mainly Music"



mainly music

For more information contact Heidi 022 315 3326

Get your car washed, dried and windows cleaned - Price arranged on request!

Contact: Rex Hibbs
Flat 1/26 Orawia Rd, Tuatapere

COMMUNITY NOTICEBOARD

TUATAPERE PRESBYTERIAN CHURCH MARKET DAY

The church market is held at 10am every 3rd Saturday of the month in the Tuatapere Presbyterian Church Hall, Main Rd, Tuatapere. ALL welcome! Come and browse!

Last Market Day!

Saturday 15 May 2021

(We're closed over the winter months)

Stall holders including plants, free range eggs, local honey, local crafts and more! Coffee & Tea available too!

If you would like a table for hire when we re-open for spring please text: **Tim Vanderpijl 027 716 6478**

TUATAPERE SCOUTS

Are you and your family looking for something that will foster personal development, create a sense of community and at the same time challenge you or a school age member of your family? Have you thought of joining Scouts?

At Scouts we have Kea's for children aged 5-7 yrs, Cubs for children aged 7- 9 1/2, Scouts for 9 1/2 -15 yrs.

We also have a need for leaders so we can deliver our programmes effectively. Please contact:

Leader Anne-Marie 027 688 5828

Group Leader Quinton 027 223 4842 or (03) 226 6969

Please Note:

Next term we will be changing our programme to a **Monday afternoon/night**. First afternoon/night will be **10th May**.

TUATAPERE PLAYGROUP

23B Orawia Road. **Friday Playgroup 9am - 12pm**

All parents and children welcome!

Children's morning tea is a packed lunchbox from home at Playgroup (as opposed to a shared morning tea).

Any queries please contact:

Gemma Bennett 022 040 3368 Alice Harris 027 270 0363

CLIFDEN PLAYGROUP

45 Otahu Eastern Bush Road.

Every Wednesday (during School Term) 9:30am - 12:30pm.

All mothers and children welcome.

Bring packed lunchbox for your child's morning tea.

Any queries to: Lynley Patterson 027 429 7436



TUATAPERE TOY LIBRARY

Tuatapere Toy Library has been a toy swap/hire service provided to the young families of Tuatapere and surrounding since 1989. The purpose is to create opportunities for the little people of our community to have accessibility to toys. A small contribution of an annual membership allows families to join the group and have access to the toys.



Mums & Bubs Coffee Group is every Thursday! On **May 13**, Anna Thompson will also be in the dayroom at the Medical Centre at 12pm to give a talk. She is a physio and she specializes in the pelvic area.

For more information or questions please text or ring Nathalie Pahl on **027 4759 075**

WAI AU SQUASH CLUB

Squash is a great way to get a bit of exercise over the winter months, have some fun and meet some new people. Women's Interclub - Tuesday evening. Men's Interclub - Thursday evening.



For more info please contact:
Nic Mitchell **021 815 531** or
Sam Egerton **027 2505 477**

SENIOR CITIZENS

Senior Citizens is a group of over 60s that meet every **Friday afternoon at 1pm** at the rooms behind the RSA Hall.

We are always looking for new members so if you would like a fun afternoon playing bowls, cards or just catching up with friends, come and join the group.

Contact: Olive Bennett Ph **(03) 2266 477**

WAI AU VALLEY PRESBYTERIAN CHURCH

Services for all ages! Every Sunday at 10.30am. Tuatapere Presbyterian Church, Main Street, Tuatapere. All welcome to join us.

For information please contact:
Chris Howden Session Clerk 021 477 999

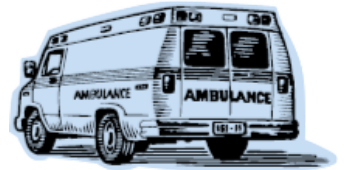
TUATAPERE AMBULANCE

Did YOU Know?

The Tuatapere Ambulance is a funded service by the Tuatapere Lions Club, for the residents of Tuatapere & Districts.

Should you receive an account for this service from St John, please forward it immediately to:

**The Treasurer
Tuatapere Lions Club
PO Box 47**



Tuatapere

Sometimes we experience difficulty in receiving the invoices for YOUR trip - so PLEASE do forward them on to us.

Thank you!

**Tuatapere Lions Club Charitable Trust
Ambulance Committee**

WESTERN SOUTHLAND HEALTH SHUTTLE

The Western Southland Health Shuttle Service travels from Otautau, Ohai, Nightcaps, Tuatapere, Riverton - covering all of Western Southland. We also connect with the Invercargill-Dunedin shuttle.

The Western Southland Health Shuttle operates Monday - Friday (excluding Public Holidays).

Bookings are required by 3pm the day prior to transport.

Ph: 0800 103 046 to book.

Please book as soon as you receive your appointment.

TUATAPERE VOLUNTEER FIRE BRIGADE

We're on the lookout for members to join this rewarding organization. We are looking for persons who are, ideally, available throughout the day.

If you think that you would like to try this (sometimes lifelong) commitment, then please feel free to come and try it!

We train on Tuesday nights at 7:30pm during daylight saving and 7pm through the winter months.

We look forward to meeting with you.





THE NEXT SOUP & CHAT (FREE)

Thursday **20 May** at Tui Base Camp. **11am to 12:30pm**
See you there! Book (for catering purposes) by calling
Keri Potter **027 757 5983**

PICKLEBALL

We are fortunate to have for our enjoyment
a local all-weather pickleball facility at the
Clifden Hall, which now has full toilet and
kitchen facilities.



This exciting, easy to learn, fun game, is suitable for over
9 year old's and anyone with reasonable hand-ball
coordination. We currently have players in their 70's
grateful for the, easy on the joints, exercise gained.

Pickleball, which is a **hybrid of tennis, badminton and
ping-pong**, is the fastest-growing sport in America.

Come along and join us for a fun evening **every Friday**.

The court is open for play from **5.30pm**

Beginner's tuition is available.

Private hire at times to suit is also available.

Bring gym shoes only as all other gear is provided.

Phone Philip **027 9099 649** for info.

A SPORT FOR ALL AGES

Have you thought of small bore rifle shooting
which is known in Southland as target shooting?



Nightcaps meet on a Monday night.

Contact: Raeleen Sinclair **(03) 225 7834**

Tuatapere meet on a Wednesday night.

Contact: Kevin Daly **(03) 234 5162** or

Quinton Erskine **(03) 226 6969**

<https://www.sporty.co.nz/targetshootingsouthland>

IT'S NOT JUST ABOUT RUGBY



IT'S ALSO ABOUT BEING AN EGG WITH YOUR **MATES**

WAI AU STAR JUNIOR RUGBY

SALVATION ARMY FAMILY STORE TRUCK

The Salvation Army Family Store
Truck will come out and collect
large amounts of your pre-loved
furniture & other household items.
This service is free.

Please call the store to organise
your visit on **03 214 5380**



**Family
Store**

Donate. Buy. Help.



familystore.org.nz

TUATAPERE HEALTH & GIFT SHOP - Riverton Pharmacy

We now have two courier drops
for prescriptions for our
Tuatapere customers:

1:00pm and 4:45pm.

The Health & Gift Shop is open
from 12:30pm - 5:30pm.

If we can help in any other way,
please contact

Riverton Pharmacy **(03) 234 8515**



COUNTRY CORNER CRAFTS

Come in and browse and see what
we have to offer. Hats, scarves,
children's knitwear, cards,
jewellery, woodware, sewing, jams,
pickles, sauces, etc.

Tuatapere souvenirs "On Natures
Edge" logo are always available.

Is anyone interested in joining to
sell their crafts? You are more than
welcome to contact us.

Want to volunteer your time & work
in the Craft Centre - let us know!

It's a great way to meet people!

If you wish to view the shop and it
is closed, please ring

Louise Greber (03) 668 6001 or

Lyla Sherriff (03) 226 6187

and they will open it for you.

Tuatapere Freight

(formerly Tui 2 Town Freight)

RUNS MONDAY TO FRIDAY
WEEKENDS BY ARRANGEMENT

Phone Brandon

027 436 4360



Riverton Electrical Ltd

The Bright Green Sparks
Industrial, Commercial, Residential
Member of Sustainable Electricity Assoc. of NZ Inc (SEANZ)

0274327215

Email: rivertonelectrical@gmail.com
Address: PO Box 10, Riverton 9847

Proud to support Western Southland - keeping it local!

**Call today to discuss your energy needs
for the home or business**



Specialists in:
Renewable Energy
Energy audits
Energy management
Home ventilation
Heat Transfer
Dairy maintenance
Effluent systems (Electrical)
Preventative maintenance
Freeview TV

TUATAPERE HANDYMAN SERVICES

Barry Bennett
(03) 226 6730

- **Painting - Interior/Exterior**
- **Waterblasting**
- **Carpet & Upholstery Cleaning**
- **Spider & Fly Spraying**
- **General Repair Work**
- **Lawnmowing**
- **Hedge Trimming**
- **Weeding**



IN AND AROUND TUATAPERE

Tui Trails Update

Anne Horrell, Chairperson, Tui Trails Committee

The Tuatapere Tracks Committee (Tui Trails) met recently to peruse and discuss a draft Tui Trails pamphlet/brochure. This pamphlet contains information on each of the local walking tracks within the town, and also of Lillian's Loop (by the Tuatapere Cemetery). It also includes a detailed map outlining a suggested route for walkers to follow.

The brochure has been designed by Donna Hawkins, a graphic artist at Southland District Council. Donna has been involved in various local projects requiring clever and innovative design. (Donna designed the Tui Trails signs you will see located around the town). The Tuatapere Tracks Committee was delighted with the draft brochure. With a few small alterations the brochure will be ready for production. You will see these proudly on display, and available, at local outlets very soon!



In the discussion which took place at the Tuatapere Tracks Committee meeting it was decided that a track, presently 'loosely' referred to as the 'Blue Track', be renamed to 'Templeton's Track'. Templeton's Track takes its name from a prominent pioneering family (the Templetons) who have always contributed to activities and events in Tuatapere in a generous, very practical manner. The founding Templeton fathers "James and William Templeton opened the first store west of the Waiau River in a tent at Breakfast Creek, Papatotara and supplied gold miners during a rush." "Later, so as to be more central for farmers and miners, it was moved to the Waiau River mouth where its existence is recorded as late as 1902." "While the second store continued to trade, bush was cleared and the third shop was built at West Waiau, a corner peg of Tuatapere." "It is easy to conclude that James and William Templeton, through their stores at Tuatapere, had from 1889, provided a service for anyone living in this area, and that they owned and operated the first business premises on either side of the Waiau River, and in so doing, founded Tuatapere. They were William Templeton (1857-1934) and James Templeton (1865-1932), the brothers of Andrew Templeton, my grandfather, and sons of John Templeton." (Written by Allen Templeton in A Timespan of Templetons).

Throughout the last century and continuing on to the present the Templetons have been renowned in the sawmilling industry, as well as being respected for their knowledge, expertise and ability to build good relationships with those around them. We are very fortunate that the Templetons in our community continue to uphold the work ethic and sound values of their forefathers. They continue to contribute in a very valuable way to the various aspects that benefit the Tuatapere community.

It is only fitting that we have a walkway named in honour of the Templeton family. The future plan is that Templeton's Track will receive improved maintenance and attention to make it more accessible for walkers to enjoy. Watch this space ... as more plans will be revealed in regards to this track.

Best wishes at this beautiful time of changing seasons.

Tuatapere Community Gardens

Isobel & Trudy

Well another year is nearly over for our garden and it's time to put the plots to bed for the winter. It has been a good year for our produce - all vegetables, tomatoes, gooseberries, blueberries, rhubarb, apples and pumpkin.

Thanks to Quinton for mowing and spraying.

Thanks to Michelle and Mr Bennett for organising the W.A.S pupils who helped put the bark chips around - it was a big job. What an awesome bunch of kids and so happy to help.



It has been great to work with our community worker (Keri) to give food for her food parcels.

If you call and get a few veges please leave a small donation in our box by the gate. And if you have spare time we would love to see you in the garden next season! Thanks!

Tractor Driver wanted from June onwards
Permanent position. Wide range of work.
Experience preferred.
Please ph Alex Reid 021 2775 308

Shearing magazine

Des Williams (editor)

Tel 07 839 2891 : Mob 0274 833 465

Email : shearingmag@xtra.co.nz

Member NZ Guild of Agricultural Journalists and Communicators (Inc)

LAST SIDE PUBLISHING LTD

PO Box 102, Hamilton 3240, New Zealand

Shirley Whyte

Your local real estate specialist living & working in Western Southland



for: Friendly service, reliability,
sound local knowledge in
Western Southland,
Te Anau & Stewart Island

Harcourts



M 027 504 5220 O 03 214 4080

E shirley@harcourtsnm.co.nz

W www.harcourts.co.nz

Sewing and Mending Services Available

Experienced machinist offering fast, reliable service with very reasonable rates.

I will mend/make anything from zip replacements to curtain making - just ask!

Free quotes and pick-up delivery service within Tuatapere.



Contact **Deborah**

(03) 226 6783 or 021 0305 667



GREAT FREIGHT RATES

**Same Day
Door to Door
Monday - Friday**

**General Light
Freight Service
No Rural Surcharge**



- Fresh & Chilled Freight
- Meat & Vegetables
- Flowers & Chocolate
- Bottled Milk
- Prescriptions
- Vet Supplies
- Ag. & Vehicle Parts
- Hardware
- Oil & Lube
- Ammo & Chemicals

**Invercargill - Winton - Drummond - Otatau
- Tuatapere - Ohai/Nightcaps - Riverton**

027 340 5845

bulletcourier8@gmail.com

bulletcourier.org



BEN MCMASTER BUILDING

Ph: 027 202 7955
benmcmaster@live.com

- Licensed Building Practitioner
- Sheds, renovations & new homes
- Based in Western Southland

You dream it, we'll build it

WANTED TO BUY

Possum Fur, Hard deer,
Antler, Deer Velvet.

Phone Leith 027 496 3721

CHAINSAW SHARPENING

All chainsaw chain sizes precisely sharpened and
rakers taken down accordingly, guaranteed results

Chain only \$10 Taken Off & Refitted \$13

Please phone (03) 2266940 evenings

For all your fencing requirements

WESTERN FENCING

SHEEP | DAIRY | DEER



Call BEVAN 0277 413 213

Emma Wright
Thurs JUNE 24
Save the date

Raising Body Confident Kids

An evening for
parents of toddlers to teens

"I wanted to make sure I
wasn't passing on my
negative body issues to my
daughter. I got SO much more
than I expected! I can say it's
changed our lives."

7.30 pm
Waiau Town & Country Club
www.emmawright.co.nz

Raising
Body
Confident
Kids



29th ANNUAL HAY DRIVE TUATAPERE DISTRICT LIONS

Hay, Baleage and Silage Competition



Friday 11th June 2021 at 134 Grove Burn Road

The Hay & Baleage will be auctioned during the afternoon.
The recipients of the day's profits are:

*Hospice Southland, Tuatapere Free Ambulance Services,
Education Fund within the Community.*

We are at present contacting all farmers with Pit Silage and
a local Lion Member will be in contact with those farmers
shortly. If we miss someone please contact:

Charlie Copeland 027 669 1529

Entry for this competition will be \$80.00 + GST of which
100% will go to the nominated charities.

Those entering this section of the competition will have a
chance of winning the very generous major prizes, **as well**
as an almost guarantee of collecting a spot prize on the
11th of June so long as they are present on the day.

**FARMERS WHO DONATE 3 OR MORE ENTRIES WILL
HAVE AN EARLY CHANCE AT THE PRIZE BOARD.**

One entry comprises of:

- 8 small bales per entry **or**
- 1 large hay bale **or**
- 1 bale of baleage
- 1 entry silage (pre judged)

Donations of straw will be gratefully received. A Lions
Member will contact farmers approximately 1 week prior
to the competition. The auction of entries will be mid
afternoon. We hope to sell 200 bales baleage, 200
conventional bales and 50 large bales of hay.

This year we have several new sponsors as well as more
demonstrations of ALL the new motorbikes and some new
4 x 4 utes. Farm machinery items will be on display.

Several competitions during the day include:

- The Best Swede
 - Best Fodder Beet
 - The Best Turnip
 - The Best Chou
 - Guess the weight
 - Guess the weight of a bale of baleage
- } Generous prizes for each event

The judging will be done during the morning of the 11th of
June. The Lions Club will be providing food & refreshments
at a very reasonable cost. You are all invited to turn up
early and participate in the scrumptious light meal that will
be available at lunch time.

**We will acknowledge the generosity of our sponsors prior,
during and after the competition.**

With over 100 sponsors for our competition day we have a
fantastic prize list. We remind people that they **MUST** be
present at prize giving to participate in the "spot" prizes at
the conclusion of the major presentations.

**Over the years the patronage from farmers has increased
to almost 100% support, so let's try to make our
29th competition the best ever.**

For any further information please contact: Competition
Chairman: Sammy Sanford 027 438 2248 ; Stephen Crack
027 434 6871 ; Charlie Copeland 027 669 1529 ;
Quinton Donald 027 438 8281.

Tuatapere Toy Library

The Tuatapere Toy Library Team


It is with great pleasure that we can report to you that the Tuatapere Toy Library has successfully raised the \$20,000 needed for the new storage cabin with key system. We are very grateful to our major sponsors who each granted us with \$5000.

- The Syd Slee Charitable Trust
- Community Trust South
- Te Waewae Community Partnership Fund

We are very happy to have received their support to make this happen. We have done a fair bit of fundraising ourselves and reached our goal of \$5000 to make the \$20,000 complete.

We are so thankful for the support of everyone in the community backing up our initiatives and fundraisers! A big shout out to our sponsors and our community from the toy library! We have placed the order on the cabin and key system, watch this space!

We have placed the order on the cabin and key system, watch this space!



Tune into
Tuatapere's very own Radio Station

88.2 FM - Tui FM!

Hits of the 80's & 90's and
today's current music!



LINDSAY & DIXON
LIMITED
CERTIFIED • WOODPRODUCTS • NATURALLY

Experienced Sawyer / Tailor out

Lindsay & Dixon is a fully integrated forestry, sawmilling and wood processing company located in the rural township of Tuatapere, Western Southland. The company specializes in FSC certified native Beech with over 12000 hectares of forest under MPI approved sustainable forest management.

We have a position available in our sawmilling operation for an experienced sawyer / tailor out with the key attributes for the role as follows:

- Sawmilling experience from within the wider industry with full training specific to the native timber operations available if required.
- A sound work history with good attendance and reliability is essential.
- Physically fit, healthy and able to undertake the manual work required.
- A total commitment to health & safety in the workplace and a willingness to work and contribute fully within a small team environment.
- A clean record, drivers license and pre-employment drug test will be required.
- The company is currently working flexible hours based around a 4 day week with the option for increased hours in other divisions of the business providing an interesting and variable role.
- A full company profile is available on www.lindix.co.nz

In the first instance please contact our operations manager John Templeton to discuss this employment opportunity. Ph 021 879732 or email john@lindix.co.nz





Mackenzie Brown
SHEEP CONTRACTOR

Crutching

Tailing

Sheep Conveyor

Sheep Conveyor

Drenching
Ear Tagging
Capsules
Vaccinating
Pour on
2 way draft

Mackenzie
027 9638318


Southland Community Law Centre
5 Tay Street, Invercargill

Phone: (03) 214 3180 Fax: (03) 214 3170
Freephone: 0800 550 800 (outside Invercargill city only)

**Free Legal Information
& Advice for the
Community of
Southland**




"Providing Free Legal Advice & Information"
AWHI MANA TOHU TOHU ARE MIHI KI MEUHEHE!



DAGWOOD DAGGING

Available now to all new and existing
customers for all your crutching
requirements.

3 Stand or Single trailer available
7 days a week, wet or dry.



No job too big or too small.

Competitive rates

Jeff Chambers
027 3042 241



SIMPLY SOOTHING

Soft tissue pain and tension release

ANN SUTHERLAND
Certified Bowen Practitioner

2475 Ohai-Clifden H/way
Orawia R.D. 2
Southland 9682

phone 03 225 5716
Fax 03 225 5716

Bowen Therapy is a gentle soft tissue manipulative therapy. Through manipulation, tension in soft tissue is released reducing pain and restoring movement and mobility. Also offering Scenar Therapy.



Registered ELECTRICIAN

For all electrical work
No job to small
A/Hours service available

Jay Brownlee
8 Carlyle Street, Tuatapere 9620
A/H 03 226 6673
Mob 027 4965 863
sparkieintuatapere@gmail.com



TUATAPERE TE WAEWAE Community Board

Margaret Thomas, Board Chair

What a busy time we have all had. Applications have now closed for the second round of funding through the Community Partnership Fund. The Community Board will review the dates for future applications, i.e. one round a year or two. I would like some feedback on this please.

Did you go to the WTCC and watch the beautiful Harrier Hounds put through their paces?

This weekend was an excellent example of a business and sports club working together. The Waiau Town and Country Club, Tuatapere Squash Club, Waiau Rugby Club all contributed to a great weekend. Well done and thanks.

The Heritage Orchard has apples that are ready to be eaten. You are also welcome to turn them into preserves of some kind, be it stewed, bottled, cooked or beautiful pulp in your freezer.

The King Street entrance into the Green Heart (Johnson Park), you may have noticed that the track has been realigned. The banks of Boundary Creek have been eroding away.

Would you like to become a "Friend of the Tuatapere Green Heart". Our gardeners could do with some help at different times of the year. i.e. cutting back on the track edges. Looking for feedback please.

The Tracks committee has met. Please read Anne Horrell's Tui Trails Update on the progress of the pamphlet.

Thank you to all the people who attended the L.T.P Meeting. I hope you have sent in your submissions.

The SDC is currently identifying buildings that are considered to be at earthquake risk.

I see that Tourism Minister Stuart Nash is reviewing freedom camping.

Congratulations to Waiau Area School and Hauroko School for organising ANZAC Services in their schools. I hope that the students were able to attend the ANZAC Service on April 25th.

SOUTHLAND DISTRICT COUNCIL Te Rohe Potae o Murihiku



George Harpur, SDC Councillor, Waiau Aparima Ward

Hi and welcome to my May report. As the weather is a very important part of our community I will continue to comment on it if I feel it is a worthy topic so long may the Indian summer stay with us.

Well done to Waiau Area School for the pre Anzac Day

MILLARS
- PLUMBING
- GAS FITTING
- DRAINLAYING
- LICENSED BUILDER
Master Plumbers
Ph 027 4340 705 or 03 225 8567

Aaron Cranston Building Ltd
027 252 7933
Renovations
Extensions
New Builds
Sheds/Farm buildings
Decks
Pre-purchase house
Inspections
Call us for any building requirements
Ph 027 252 7933 email: aaroncbltd@gmail.com

rendition, which was well presented and executed. Congratulations to the cadet section for their excellent drill performance. A very good performance overall.

April has been a very interesting month with LTP meetings, items for consultation, hearings, deliberations and all sorts of comments and ideas coming across at the many meetings. Some ideas were of excellent quality and some had more work to do but all in all, by listening as a councillor, I did learn and will consider many topics. I take this opportunity to thank all those that participated and in particular those who took the time to ask questions and understand the council process and point out areas of positive interest.

As we are now almost midway through the three year term of elected members it may be a good time to remind you all that in just over twelve months you will be asked to call for candidates for the next term of your Community Board. Your current Board has done an excellent job and has been subject to considerable pressure due to Covid 19 and the LTP along with changing staff and directions. It may be prudent for people who have a long term interest in the community to think about putting their names forward. The last two elections have had people shoulder tapped to fill up the six members required and I believe that not having an election is not a healthy situation for the community to be in. Te Anau had ten candidates I believe last term and Riverton needed to have two attempts at getting the numbers. We hear the roars of anger when something unpleasant like a major rates rise occurs yet where are your names on voting day?

You will also be looking for a new council member as after two terms on the Community Board and six as your Councillor I have no intention to be making any future commitment after 30/10/22. I have had some great times, met all types of people and sincerely I thank all the volunteers that have made Tuatapere a great town. Our signatures are on many structures, however working commitments have changed. We no longer are encouraged to think for ourselves, the older folks that built our town are looking down from up yonder and wondering what the hell happened to common sense. They will still be pleased with their Domain, Cemetery, Fire Brigade and all those things that they and their clubs built, that volunteers maintain and thankful for the many newbies who are actively promoting our community and its future.

I guess you will all be looking forward to meeting a local new Councillor who should be a caring person with a good feeling for the community and understands the wants and future needs of the people. It is imperative for the future of the Waiau Valley Region that we have a locally elected member from the Tuatapere Te Waewae District. I believe, through representation reviews, that I have kept stability in this area. I challenge my predecessor to do likewise. No dreamers please. I leave you all with those thoughts to ponder.



Phone: Anita Green 027 506 2418
Tuesday 9-5pm, Thursday 10-8pm, Friday 10-5pm - Appointments are encouraged.

CHAMBERS REPAIR SERVICE

45 Half Mile Road, Tuatapere

Ph: (03) 226 6654

- 24 hour Self Service Fuel
- Full Mechanical Workshop
- Agents for Wide Span Garage
- NZ Post Centre
- Your Local Fish & Game Agent



Duck Shooting Season
1st May



Duck Licences on sale from 11th March

Cost: Adult \$98, Junior \$23, Child \$4

Opening Weekend

20 Mallards, 10 Paradise, 5 Black Swan

Daily Limit per day thereafter

10 Mallard, 6 Paradise, 5 Black Swan

Day Licences available from 11th May



- Specialist in quality pasture meter reading with advanced sensor technology
- Provide 200 measurements per second or 18,500 readings over a single 500m pass
- Provides a fully integrated electronic support system
- Provides a secure web-based storage of information with easy access
- Prompt generated feed wedges for rapid decision making and seasonal comparisons
- Generate reports at the gate, supplying valuable pasture cover data and comparable results every time
- Improve heath & increase animal hydration
- Enhance production & improve water quality
- Reduce bacterial/algae contamination of trough water

CLEAN TROUGH WATER MEANS IMPROVED LIVESTOCK HEALTH



Now 2 bikes available for pasture metering

Brett George • P 027 351 3408
E platemeterservices@gmail.com

Waiau Town & Country Club

**Meals (homemade goodness)
available Thurs, Fri, Sat & Sun
evenings from 4pm to 9pm.**

Kid's menu. | Happy to cater for dietary requirements.
Please pre-book for groups of 8 or more.

Club Opening Hours:

Mon - Thurs 4pm till close.

Fri 3pm – close.

Sat Noon – close.

Sun 3pm – close.

Functions/Events/Meetings/Birthdays.

We can cater! Just call to book.
Ask for Gary to discuss your options.

What's on at the Club:

***STEAK NIGHT, STEAK NIGHT** – every Thursday night is steak night - \$25 steak meal – yum!!

***Mother's Day** - Sunday 9th May - open for lunch/brunch from Noon & dinner from 5pm.
BOOK NOW!

*** Mother's Day** – there will be lunch/brunch & dinner specials on the day, bouncy castle for the kids, come treat your mum! **BOOK NOW!**

*** ROAR Coffee** - now at the Club, roasted in Southland

***Western District Hoedown** - Sunday 13th June
- kicks off at Noon.

***WTCC AGM** - Sunday 27th June - nominations now open to join committee..

*** MEMBERS DRAW & RAFFLES**
drawn every Friday night! Approx. 7.30-8.30pm.

Keep an eye on our Facebook Page for more details on upcoming events

Annual membership/subscription

Annual membership is \$50 or \$30 for pensioners.
Want to become a member, pop into the club & sign up!
Or email or call us.

Phone: **03 22 66 489** | Address: 41 King St Tuatapere
Email: waiautcc@gmail.com | [Facebook: facebook.com/waiautcc](https://www.facebook.com/waiautcc)
| Courtesy Van Available |

We look forward to seeing you!

SPECIAL FEATURE - PART TWO

by George Charlton

404978 Squadron Leader Raymond Johnson Watson

DFC (Distinguished Flying Cross)



Parents:

Mr and Mrs H E Watson of Karori, Wellington

The last edition of the Western Wanderer featured an article about Squadron Leader Ray Watson, a local lad who paid the ultimate sacrifice fighting for his country - New Zealand - in World War 2. Squadron Leader Ray Watson is on the Tuatapere Roll of Honour and his name and photo feature every year in the Tuatapere memorial ANZAC service.

As a tribute to Squadron Leader Ray Watson I am including notes about his youth and a quite remarkable and impressive record of war service.

Raymond Watson was born at Waimate on the 5th July, 1916. He received his secondary education at John McGlashan College Dunedin, Waitaki Boys' High School and Southland Boys' High School. He gained the School Certificate as well as playing football for the 1st XV at both Waitaki and Southland Boys and, afterwards, senior rugby for the Western Star Club and tennis for the Clifden Club. For nearly three years after leaving school he was employed by a legal firm in Invercargill and, at the time of applying for enlistment in aircrew in October, 1939, was managing his father's farm at Tuatapere in Southland.

He first flew with the Aero Club gaining the pilot's 'A' licence. In 1935 Squadron Leader Watson was enlisted at Initial Training Wing, Levin on the 1st December 1940 and posted on the 1st March 1941 to Taieri to undergo his elementary flying training. Then on the 12th April he was sent to No 1 Service Flying Training School, Wigram. Here on the 5th July he was awarded the Flying Badge and commissioned in the rank of Pilot Officer. While overseas on the 5th July 1942 he was further promoted to Flying Officer and to Flight Lieutenant on the 5th July 1943. He was granted the acting rank of Squadron Leader on the 6th December 1943.

Squadron Leader Ray Watson's overseas experience began on the 22nd July 1941 when he embarked for the United Kingdom. Squadron Leader Watson arrived at No 3 Personal

Reception Centre, Bournemouth on the 2nd September and was posted on the 22nd of the same month to No 20 Operational Training Unit, first at Lossiemouth in Scotland and then at Lakenheath in Norfolk, for crewing up and completion of his training on Wellington Bomber aircraft. On the 19th January 1942 he proceeded to No 44 Ferry Group Pool, Harwell, Berkshire for embarkation overseas. He flew later the same month as pilot of a Wellington aircraft to Gibraltar, and to Malta and Egypt early in February. After a month at the group training unit Shallufa in Egypt, he was posted on the 12th March to No 162 Squadron-first in Palestine and later in the Western Desert. From landing grounds in the desert he took part in 21 operational flights; the targets including shipping at Benghazi (2) and Tobruk (7) in Libya, enemy mechanised vehicles at Dernseid (2) and Sollum in the Western Desert, Maleme Aerodrome and a wireless station at Kastelli in Crete. In September he moved with the squadron to Luqa, Malta and from this base brought the total of his operational flights to 32; the targets including Pantelaria wireless station (3) and raids against Syracuse in Sicily, Taranto in Italy and Tripoli. Afterwards, he returned to Egypt on the 10th December 1942 and embarked at Suez for the United Kingdom.

Squadron Leader Watson proceeded by sea via South Africa and, on arrival in England, was posted to No 11 Operational Training Unit at Westcott in Buckinghamshire. Early in April he completed a course at No 92 Group Instruction School, Upper Heyford, returning to Westcott on the 12th of the month for staff duties. During his rest period in September 1943 Squadron Leader Watson was awarded the Distinguished Flying Cross, the citation covering the award being as follows:



Sq/Ldr. R. J. Watson,
D.F.C., of Tuatapere,
Southland, missing on
operations.

"Flight Lieutenant Watson has flown in both bombing sorties and special reconnaissance flights. In the course of these operations he has consistently displayed the utmost keenness and determination, undeterred by the most fierce opposition while his courage and devotion to duty have been worthy of high praise."

... to be continued next issue 15

Tui Base Camp



**Open from 8am
every day!**

Upcoming Events

- ★ **Oysters Available**
- ★ **Duckshooting Breakfast - Sat 1st May**
- ★ **Sunday Pool - 2pm every week
(guaranteed \$100 first place)**
- ★ **Every Thursday Happy hour 5.30-6.30pm
& Free Pool all day**
- ★ **Friday Dinner Special - Indian Curry**

For all of your dine in and takeaway requirements including:

In-house roasted Amore Coffee

In-house made pies, sausage rolls,
cheese rolls

Range of breakfast options

Packed lunches

Catering

Phone: (03) 226 6250

www.tuibasecamp.co.nz





Sticky Slow Cooked Lamb Shanks

*This lamb shank recipe is one of my family's favourites.
Tender lamb cooked in a rich sticky sauce.*

Ingredients

- 4 large lamb shanks
- Rice bran oil, for frying
- 3 tbsp olive oil
- 25g butter
- 2 onions, finely chopped
- 2 carrots, peeled and sliced
- 1 leek, sliced
- 2 sticks celery, chopped
- 8 to 10 cloves of garlic
- 1½ cups red wine
- ¼ cup tomato paste
- 1 bunch thyme, finely chopped
- 2-3 sprigs rosemary, finely chopped
- 1½ cups lamb stock or use ½ beef ½ chicken
- 1 x 400g can chopped tomatoes
- 1½ tsp sugar



Method

Preheat the oven to 140c.

Heat a large frying pan that can go in the oven over a very high heat. Add 2 tablespoons of rice bran oil, then brown the shanks, turning until dark brown all over. Set the shanks aside.

Reduce the heat to medium and add the olive oil, butter, onions, carrots, leek, celery and garlic. Cook, stirring for 10mins until the veggies are golden and soft.

Add the tomato paste, thyme, rosemary, lamb stock, tomatoes and sugar to the pan and stir to combine. Add the browned shanks, cover with a lid and bake for 4 hours, spooning cooking liquid over the shanks every now and then. The meat should almost be falling off the bone by the end and the sauce nice and thick.

Serve the shanks over creamy mashed potatoes, alongside green vegetables. Pour the sauce from the pan generously over the top.

MOUNTAINS EDGE CABINS MONOWAI



Hunting, Fishing, Mountain Biking,
Kayaking & Tramping
Cabin Accommodation

12 Cabins
Double and Single Available
\$35.00 per person per night

Eftpos available

Full Kitchen Facilities, Showers, Toilets, Playground
& the Tennis Courts right across the road!

We are 'pet friendly'

www.mountainedgecabins.com
Email: mountainedgecabins@gmail.com

75 Turbine Drive, Monowai. Ph. 03 225 8267



* 13 Tonne Digger * 5.5 Tonne Digger * 2.7 Tonne Digger- dry hire or operated
* Tip Truck * Bob Cat * Augers * Post Driver * Tree Saw & Hedge Trimmer

* Tree Trimming * Post Driving * Fencing * Cleaning of Wintering Sheds * Site
Clearance * Cartage * Gravelling * Lane Maintenance * General Earthworks

For all enquiries and bookings please contact Lance or Alice Harris

Lance: 027 304 3714

Alice: 027 270 0363

Email: lanceharris533@gmail.com

Check us out on facebook- Harry's Machines

WAIAU VALLEY SHEARING LTD



Simon de Vries

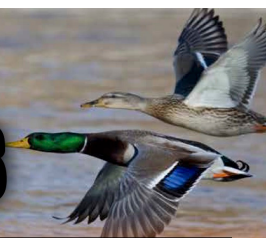
Julie Heaps

027 840 9867

03 226 6212



FLY INSTORE TO... HUNT FOR OUR DEALS



Jim Beam / CC
4.8% 440ml 4pk (inc zero) cans
Effen 330ml 4pk bottles



Cody's (incl zero) 7% 250ml 12pk cans
Woodstock 5% 12pk bottles



Cruiser
7% 12pk can range



Woodstock
250ml 7% cans (incl zero) 12pk



Tui Hard Soda
330ml 10pk cans



Jim Beam Gold/ CC
Premium 7% 250ml 12pk



Smirnoff Ice Double Black
7% 12pk can range (ex guarana)
Gordons G&T, Gin & Soda
(pink/sicilian) 12pk 250ml cans



Long White
10pk bottle range



Part Time Rangers /
JD 4.8% (incl no sugar) 10pk cans



Tui Bourbon
Tui Vodka Soda
7% 18pk range



Wolf Blass
Yellow Label range
(ex PN)



Jacobs Creek (ex Sparkling
range) **Five Flax** range



Mudhouse
range (ex PN)



Brown Brothers
Moscato range



The Ned Range
(ex PN)



Pasqua
1500ml range



Malibu / Kahlua
700ml (incl flavours)



Ivanov/Seagers
(incl lime) 1L



Larios 1L
JB Honey / Midori 700ml



Jameson
Jameson Cold Brew
Absolut / Beefeater
(flvrd ranges only) all 700ml



Larios Rose/
Citrus / Larios 12 1L



Jim Beam 1L
Canadian Club
(incl spiced) 1L



Coruba (incl Gold)
JW Red Label 1L



Bombay Sapphire
1L



Jack Daniels 1L
Woodford Reserve 700ml



Chivas Regal 12yr 1L
The Glenlivet 12yr 700ml



Bruichladdich Classic
Laddie 700ml



Kingsfisher Strong
7.2% 500ml cans



Monteiths
6pk bottle range



Fortune Favours
6pk range



Somersby
10pk cans



Orchard Thieves
12pk range



Haagen
15pk bottles



Asahi
12pk bottles



Lion Red, Speights,
Waikato or Summit
15pk bottles



Steinlager
15pk bottles



Heineken
15pk bottles



Tui/Export Gold/Extra
Low Carb/ DB Draught
24pk bottles



Export 33
24pk bottles



Carlsberg
24pk bottles



Promotion period between 1/05/2021 to 31/05/2021. While stocks last. Promotion only available at participating stores. Please contact your local store to confirm whether they are participating in the promotion and check the pricing in-store prior to purchase. Online pricing will vary.

100% **NEW ZEALAND**
thirstyliquor.co.nz

OWNED AND
OPERATED

FOLLOW US ON
SOCIAL MEDIA



ASK ABOUT
LOYALTY CARD
BENEFITS &
GIFT VOUCHERS

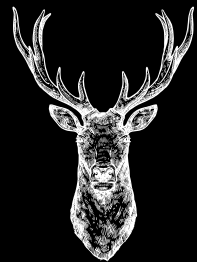




RAW FARM HOMEKILL

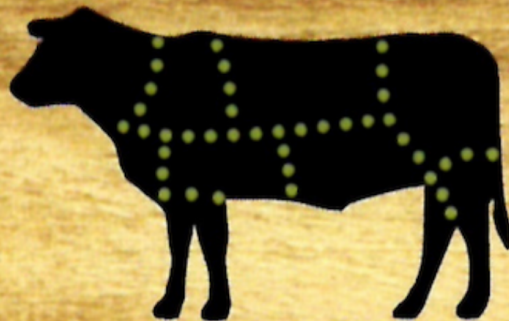


**We are ready to process your
recreational-hunted game
from the Roar or from
Duck Shooting!**



Wayne & Rachel Saunders
Qualified Butcher
rawfarming@yahoo.co.nz

027 457 6350
82 Clifden Highway
Tuatapere



Cut up the way you want

Beef

Pork

Sheep

Venison

Other game meats

Traditional Smallgoods

Ratty Says ...

Waiau Memorial Library

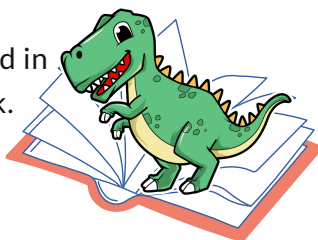


After reading some books about World War 1 and learning about Poppies and Flanders Field, I decided it would be a good idea to find out more about ANZAC Day. Did you know that ANZAC stands for Australian and New Zealand Army Corp? I also read that wives and women's groups sent special biscuits to the soldiers. The biscuits didn't get spoiled during transport and still tasted nice when they got to the soldiers. They became known as ANZAC biscuits. I'll have to make some and see if they're as yummy as people say they are. I bet they're not as tasty as my favourite, cheese pizza. I found out that ANZAC Day is commemorated on the 25th of April because that's the day the Australian and New Zealand soldiers landed at Gallipoli. While I was doing my research I found out about other battles in different wars. There's a group of soldiers called the Rats of Tobruk, they fought in WW11. I was very interested to learn about them, being a rat and all. They even have their own unofficial medal. It has a rat on it!



I helped put out the poppies at the Library this year. It was hard work, some of the poppies were taller than me and there were lots of them.

I was a bit sore the next day so I stayed in bed all day and read my dinosaur book.



accelerate
PHYSIOTHERAPY



Lindsay Stephenson
Dip Phty, Dip MT, Reg Acup, P3 Dip Rehab, MNZCP (pain management)



Andrea Murray
Dip Phty, Dip MT



Alana Makolm
BPhy, BPAEd, Reg Pilates Instructor, PGCert (acup), Reg Acup

See the friendly team for help with...

- Back and neck rehabilitation
- Sports injuries
- Dizziness
- Chronic pain
- Occupational health
- PING/Steel Pilates for cancer survivors
- Breathing disorders
- Exercise programmes

Invercargill clinic open late nights

ACC available

Weekly satellite clinics in Tuatapere and Ohai

accelerate
PHYSIOTHERAPY

60 Deveron Street, Invercargill
P 218 6583 F 218 4105
E office@acceleratephysio.co.nz
www.acceleratephysio.co.nz

CANTERBURY CARS
4WD Specialists

For all your vehicle requirements

Cars, utes, 4WDs, vans

Finance available

Contact: Murray Dowling
027 556 2655

Visit our website
www.canterburycars4x4.co.nz

**SOUTHERN SOUTH ISLAND
FARMER COUNCIL**

beef+lamb
new zealand

Beef + Lamb New Zealand in the Southern South Island are calling out for new Farmer Council members.

The Farmer Council works with the local staff on the ground to give direction of B+LNZ activities while being a connector to you.

You will learn and utilise leadership skills, widen your networks and be the voice for your local area. You will also be able to identify opportunities and facilitate understanding of the broader issues affecting sheep and beef farmers.

If this is of interest and you would like to give a little back to the industry (with the opportunity for personal development), perhaps you should consider joining our Farmer Council.



Please contact Olivia Ross at
olivia.ross@beeflambnz.com
or phone 027 801 7868

WWW.BEEFLAMBNZ.COM 0800 BEEFLAMB (0800 233 352) BY FARMERS. FOR FARMERS

Specialising in
Dairy Conversions
Rural Fencing
Post & Rail

H Gill Fencing,
Eastern Bush

Phone 021 225 5489

After Hours 03 225 5488

Email hamish@hgillfencing.co.nz





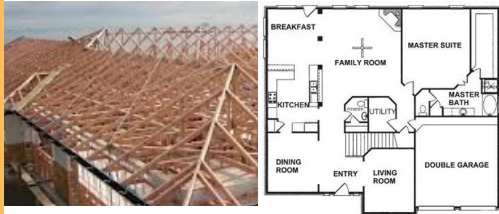
Agricultural Contractors servicing Western Southland and beyond.

BALAGE - SILAGE - GROUNDWORK - FEED TRADING
Nigel 021 226 6156 / fowlecontracting@gmail.com

PAUL ANDERSON BUILDER

AVAILABLE FOR ALL YOUR
BUILDING REQUIREMENTS.

NO JOB TOO SMALL.
COMPETITIVE RATES.
REFERENCES AVAILABLE!



Mobile: 027 890 3602
thetakis@outlook.com



C: 0274 247 102

T: 03 225 8652

E: admin@drakeplumbing.co.nz

KIERAN DRAKE
Certifying Plumber
& Drainlayer



MR STEEL
TUATAPERE

PH: 027 276 6816
MALCOLM

For all your engineering,
steel fabrication and repair needs!

FORDE SHEARING LIMITED

Available for all new and existing clients

For all your shearing and
crutching requirements

Please phone Darin or Julie Forde

(03) 235 8853
027 229 7760

Painting & Handyman Services

Experienced Painter

I can help with all sorts of odd jobs too!

Gardening
Lawn mowing
Tree & Hedge Trimming
General labouring



Phone **Luke Wikstrom 027 2773 925**

For all your Accounting and Tax Solutions

Ask for Janice or Trevor England

 **03 2266110**

Aparima Accounting Ltd
57 Main Road Tuatapere



JOHN TIMPANY Craftsman

022 046 1402

7 Settlement Road
Papatotara
Tuatapere, Southland

Furniture
Native Timber & Timeless Design
Signs Carved & Shapes Shaped
Small Structures Erected

PROPERTIES WANTED!

Contemplating selling? You might
be surprised by what your property
could fetch on today's market

Contact Julie today for a free appraisal and
to discuss how you could take advantage of
this buoyant property market



Julie Guise

021 256 4164

julieguise@sre.co.nz



SOUTHLAND REAL ESTATE LTD
Licensed under The Real Estate Agents Act 2008

MREINZ

**SOUTHLAND
REAL ESTATE LTD**

Licensed under The Real Estate Agents Act 2008

MREINZ



CONTACT US TODAY

Phone 03 221 7192

Fax 03 221 7194



- Excavators for general farmwork
- Laser guided drainage
- Gorse mulching & land clearing
- Lane maintenance
- Conversions
- Effluent Ponds
- Demolition
- 20 tonne bulldozer, roller, grader
- Drain ploughing & alkathene laying

Bucket Honey Cafe

We have

- HONEY
- Great Coffee
- Homemade Pies
- Juice Bar
- Sandwich Bar
- Homemade Icecream

Come in and try our honey!

Phone: 022 0887 993

16 Orawia Road, Tuatapere





We specialise in:

Resource consents

Farm environmental plans

Policy advice

DOC concessions

Landscape plans & assessment

We take care of the paperwork,
so you can do what you do best!

Sonya: 027 5050 077

Rebecca: 027 4246 129

www.slwp.co.nz

Locally owned & operated

Landscape Garden Design

What do you want
from your garden?

Whether building new or
revamping your existing garden
an overall plan is essential.

Free Initial Site Visit

From a few questions to get
you started, to a full landscape design.



Village Green
Garden Design
Tuatapere

Ph Robert
027 9241 204

ESSENTIAL OILS

100% PURE GIFTS OF NATURE

Florals Trees Plants Herbs Spices Citrus

To learn more

phone your local
Wellness Advocate

Carol Erskine 027 459 9654

Hatha Yoga classes in Tuatapere
starting first week of May.
RSA Hall, Thursdays 7-8pm
\$50/5 week block - all ages &
experience welcome. Contact
veronica.oostveen@gmail.com

TUATAPERE OUTDOORS & HARDWARE

For all your

Gardening tools, lawn care, garden
hoses, insect and disease sprays, potting
and compost.

We have those building requirements for
that weekend job with a good selection of
silicone, nails, screws and bolts.

New fishing rods and reels, fishing lures,
good selection of soft bait,
fishing nets, flounder and eel nets.



Good selection
of giftware.

Come in, check out
what we have.

Contact:

Judy **027 225 8192**

Paul **027 890 3602**

Shop **(03) 226 6363**



MATHIESON

ELECTRICAL LTD

ETHAN MATHIESON

M 027 634 7534 A/H 03 225 8891

E mathiesonelectrical@vodafone.co.nz

- Domestic
- Commercial
- Dairy
- Pumping & Effluent
- Heat Pump Installation
- Heat Pump Servicing

INTRODUCING

**STREBEL STRIP TILLER
WITH A KUHN 6 ROW
BEET PLANTER COMBINED
FRONT FERT HOPPER**



STRIP TILLER BENEFITS:

ONE PASS - SAVING YOU MONEY

LESS CULTIVATION = LESS BUGGING

KUHN BEET PLANTER IS ABLE TO SOW SWEDE & BEET



FOR MORE INFO OR TO BOOK PH:

Kahu - 027 5183 448

Welcome to the May Edition of
"What's Been Happening?" at....

Kia ora Western Wanderers

Kia ora, Namaraskan, Bula

What a superb Term 1 we have had to start 2021! Welcome and Happy School days to Alex Edwards and Kaleb Berkelaar. We look forward to getting to know you and your whanau.

Throughout Term 1 connections between Hauroko Valley Primary students and teachers have created dynamic environments. We have children focused on learning with magical moments where students are leading learning. It is absolutely wonderful to be part of creating independent thinkers and learners! Our learners are working with focus as our school motto - always our best; as they continuously work to progress and achieve in learning.

To meet the needs, interests and talents of our children we value the support from our community relationships. These relationships and engagement of learners in combination, build partnerships that positively impact on student's learning. Thank you to our families, friends, wider community and staff for supporting our students in Discovery Learning, H.V.P Clubs, Have A Go Programme, Touch, Ripa Rugby, Young Farmers, Duck Calling, Lasting Legacy Fence Panels and Athletics.

Discovery Time supports the transition of 4-year olds to school as they spend time in our classroom environments alongside our Year 1-3's. Save Thursday afternoons between 1.30pm-3.00pm for opportunities to come in and spend time getting to know our staff and students; all while immersing in hands on self directed learning as part of our Discovery Time.

Our Year 7&8 students have thoroughly enjoyed their time developing Woodwork skills as part of the Technology Curriculum. Thanks to Waiau Area School for supporting us with our Tech Programme. In particular we thank Ian Russ and John McNab for assisting students to develop their Technological Capabilities and Knowledge to design and construct bird boxes.



As part of our Inquiry Learning we are developing curiosities in and around our overarching theme of "Diversity". Our first focus is on our place and linking to our personal and school mihi. Hauroko Valley Primary School Houses have been established which also connect us to our place and people. Our students spent time in houses supporting each other showing whanaungatanga and manaakitanga while further developing teina-tuakana relationships. Anzac Rocks were created as part of our House Day and these have been thoughtfully placed at the Orawia War Memorial and Tuatapere Library - **"We will remember them"**.

Have a fabulous school holiday. We look forward to reconnecting with you all in Term 2. Ka kite ano - Julia Waikato, Tumuaki/Principal

Term 2, 2021 Events

Term 2 Starts - Monday 3rd May. **May** - Cross Country Training, St John First Aid, Discovery Time, National Young Leaders Day for Year 8's. **June** - HVP, Thornbury & WAS, Western & Southland Cross Country, Discovery Time, Grip Leadership Course, Deep Cove Camp Year 7&8, Matariki, Technology.

Always Our Best/Tonu to Tatou Pai

For Landscaping, Lane Maintenance, Gravel Supply & Cartage

GRADES OF CRUSHED & SCREENED GRAVELS, ALKATHENE LAYING, ROOTRAKING, FARM TRACKS, DAIRY LANES



**K J SUTHERLAND
GRAVELLING & AGRICULTURAL CONTRACTOR
2475 OHAI-CLIFDEN H/WAY
ORAWIA R.D2 OTAUTAU 9682
Ph 0274 367 934**

ELEVATOR SCRAPER, BOBCAT & ATTACHMENTS, LANDSCAPING, TRENCHING AUGERS

Supplies of Gravel Ex Waiau River

River Run Screened Grades Concrete Gravel Pea Gravel
Rejects for soak holes Crushed - AP30 and AP65

Peebles for Sheep and Cattle yards and calf sheds
Fines suitable for cow lane capping

K.J. Sutherland Contracting

Bobcat T190

**With attachments: Landscape Rake,
Augers and Trencher**

**Suitable for all landscaping, shed and yard
maintenance**

Muck-spreader and tip trailer available



PHONE KEVIN

027 367 934 / (03) 225 5716

INDEPENDENT MIDWIFE

ISOBEL DEVERY

*Caring for women throughout
Pregnancy, Birth till six weeks
Post Natal.*

*Choices for place of birth,
Home or Winton Birthing Units
or Kew Hospital.*

*Free pregnancy tests
available on request.*

**Phone: (03) 22668822
027 2267020**

©Peccaro, EthnoGraphics®

WAI AU HEALTH TRUST – MAY 2021

Medical Centre

Flu Vaccines 2021

This year for the flu vaccine season there are two different types of flu vaccines. One is for those aged 65 years and over, and the other is available for those with specific long term conditions and general public under the age of 65.

Flu vaccines are available now for everyone over 65. They will be available from the 17th May for under 65's, this includes people with chronic conditions and the general public. Vaccines will be available for everyone up until 31st December 21. If you have any questions or concerns please phone us. We held a flu vaccination clinic on April 13th which was very well received with over 100 administered on the day. I thank you all for your patience and understanding with the wait times you may have experienced. Unsubsidised vaccines are \$35.00.

Covid Vaccines – We have no details, as of writing this edition, for any arrangements of when & where these vaccines will be managed for our Rural Practice.
The most up-to-date information is on the MOH website www.moh.govt.nz.

Community Forum – we had three people attend our night on 29th March, concerns were discussed and also satisfaction of our service was expressed. Due to the low number in attendance we can only assume the majority of you are happy with the services our trust provides. As always please feel free to contact me with your concerns or compliments at any time.

Liquid Nitrogen Clinic is on Wednesday 26th May – please phone and make an appointment.

SAME DAY REPEAT PRESCRIPTION REQUEST:
Commencing 1st May 2021 our fee will be \$28.00 per request. PLEASE ENSURE you phone a week ahead to give our Practitioner time to review your file and allow adequate time to arrange an appointment if necessary.

Kind Regards
Jo Sanford (Manager)

Cell: 0272950429



Waiau Health Trust
69a Orawia Road, Tuatapere
Approved Registered ACC Provider
Monday to Friday
9:00am – 4:30pm
Ph.: 2266123

Practitioner Hours
Amanda McCracken (NP) – every
weekday

Sheryl Eden (NP) – every Monday &
Tuesday

Murray Allen (GP)
Thursdays

Liz Scott (GP)
2nd Tuesday of every month

Physiotherapist
Tuesdays & Thursdays
Phone for an appointment

Podiatrist
Visits regularly –
Phone for an appointment

Warts/Minor Skin Lesions
Liquid Nitrogen treatment available
Phone for an appointment

Homebased Maternity Care
We are offering this service in the
patient's home. Please contact Jo
Sanford on 2266123 for enquiries.

Day Activities Programme for
the Elderly
Every Tuesday & Wednesday
Please phone for further information.

District Nursing
Available as required by referral



Kia ora Western Wanderer Readers!

Term Two is shaping up to be another full-on ten weeks. Our Area Schools tournament is in Roxburgh in a few weeks time, where 30 WAS students will be competing and celebrating with the other Southern Area Schools.

Camp Columba is going to be blessed with our Year 3-6 students for a week. Our Year 7&8 students will be heading to Deep Cove with HVP. Please check out our fortnightly newsletters and FB page to see what has been happening. Again, the WAS door is always open for you to pop in and see us in action. We're just a phone call away or you can text me directly to organise a visit and catch up.



Waiiau Area School held their own Anzac assembly service, in the last week, of Term One. This 2021 commemoration was instigated and led by the WAS students. Our own cadets led by example along with other key members of our school community. The pride and attitude our WAS students demonstrated towards each other and in

respect of Anzac was outstanding. A huge thank you to Mrs Mary Ann McNab, the staff and the many people involved in making this assembly service happen.

New Zealanders and Australians will assemble on April 25 to remember "men of the far young countries" killed in war - and to honour past and present servicemen and women.

The 2020 Covid-19 level 4 lockdown saw thousands of New Zealanders gathering at their letterboxes and front doors while tuning into a live-streamed virtual service, as part of the Anzac Day "Stand at Dawn" campaign.

This year, dawn and civic services are again planned across the country. Poppies and wreaths will grace cenotaphs and lawns, parades will be held and RSAs will welcome kiwis old and young - lest we forget.



**Nga mihi, take care and keep safe.
Andrew PB**



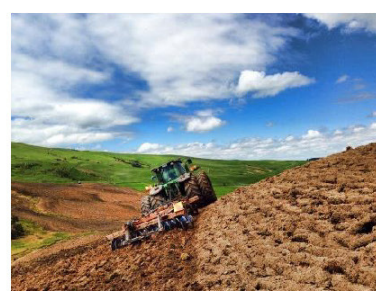
Rabco Ag Ltd – 021 362 766 – admin@rabco.nz
Agricultural Contracting Specialists - Western Southland



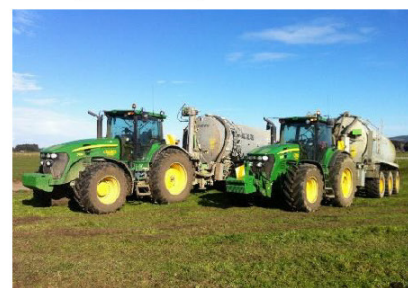
**Full silage
& baling
service**



Cultivation – including Direct Drill & Precision Drill



Effluent – Excavators - Hedgetrimming



Alex Reid CONTRACTING

**Paddock Cultivation from
Ploughing to Sowing Dry Hire
available Aerating Direct
Drilling Ridging Mulching**



Dairy Lane Maintenance

Tip Trailers • Vibrating Roller • Effluent Services

Sheep Conveyor

Drenching, Vaccination etc • 3 way draft



Rural Contractors
NEW ZEALAND

Large Skid Steer for calf shed cleaning, loading Muck Spreaders etc

4 Muck Spreaders • 16,000 litre Slurry Tanker
• Pond Stirrer • Umbilical Slurry System

**PH ALEX 0212775308 CELL
03 2255377 HOME**

WaterForce

**Irrigation Systems
Pumping & Filtration
Effluent Dispersal
Water Management**

20 Winton Hedgehope Highway, Winton
03 236 9805 www.waterforce.co.nz
0800 4 FORCE (4 36723)

WESTERN ELECTRICAL

2008 LTD

Electrical Solutions

Domestic | Industrial | Commercial

Quality Service at Competitive Prices

- New Builds, Rewiring & Alterations
- Dairy Shed, Farm & Industrial Maintenance
- Hotwater Element Replacement
- A/H Call Out Service Provided



**Ph 03 225 8974 / 027 439 3787
Fax 03 225 8973**



Jacqui and Superior go the extra mile

Are you frustrated with the lack of service from your local fertiliser consultant, peddling the same advice year after year regardless of your production outcomes, environment and sustainability?

Give **Jacqui Chamberlain** of Superior Fertiliser Specialists a call. She will bring whole new meaning to service and client/advisor relationships.

Jacqui is a key member of the highly skilled Superior team totally committed to helping you develop healthier, more productive soils and plants.

We form a specialist fertiliser company that provides high quality advice and products at competitive prices. We have been doing this for South Island farmers and growers for just on 20 years.

Superior promotes a total soil care package. First, we get to understand the make-up, nutrient status and health of your soils, the demands you are going to place on them, and your production goals – before we apply one kilogram of fertiliser.

A comprehensive regime of vigorous soil tests will be undertaken and the results will provide the basis of a Superior Fertiliser Management Plan customised for your unique situation. This will complement your farm's Environmental Plan and provide the blueprint for an ongoing annual fertiliser programme.

We then supply guaranteed-quality solid fertiliser for your pasture and crops, monitor production and other outcomes, and update your Plans as required.



It's free to talk so don't hesitate to give Jacqui a call.
Phone 027 202 0611

Jacqui Chamberlain
Fertiliser Advisor Southland
027 202 0611
jacqui@superior.net.nz




FERTILISER SPECIALISTS
SUPERIOR
www.superior.net.nz

TUATAPERE SERVICE STATION

**20 ORAWIA ROAD
PHONE: 03 2266475**

FOR ALL YOUR MECHANICAL NEEDS



**Car & 4WD WOF's
Trailer & Caravan WOF's
Motorbike WOF's
Servicing all vehicles
New Tyres
Light Engineering
Electrical Work
Scanning of most vehicles**

HARWARE IN STOCK

**Nails, screws, tec screws, bolts and nuts, dyna
bolts, pulleys, karabiners, hinges, padlocks, rope,
chain and much more**



**NZ TRANSPORT AGENCY
WAKA KOTAHI**

WE CAN PROCESS ALL YOUR

**REGISTRATIONS
ROAD USER CHARGES
CHANGE OF OWNERSHIPS
VEHICLE EXEMPTIONS
CANCELATION OF REGISTRATION
CHANGE OF HUBOMETERS**

