



WESTERN Wanderer

Colac Bay | Orepuki | Tuatapere | Clifden | Orawia | Blackmount | Monowai

Photo Credit: Blackmount Trail Ride - Kate Gray

Tuatapere Volunteer Fire Brigade

Sky Tower Challenge Team 2021

Supporting Blood & Leukaemia Foundation

Fun Car Trial

Fundraiser

(suitable for all warranted and registered vehicles)

Sunday 18th April 2021

Starting at 1pm with registrations, teams let go soon after

Waiau Town and Country Club

\$30 per vehicle

Raffles with an Auction to follow.

Prizes to 1st, 2nd and 3rd fully completed with some spot prizes

Auctions include:

- A Getaway to Te Anau
 - Mutton
 - Framed print
- 10 cubic mts of Kiln dry beech fire wood kindly donated

by Lindsay & Dixon Sawmill



Waiau Town and Country Club Bistro open at conclusion of event for meals

Join us for a great family fun day out!

HANDY PHONE NUMBERS



EMERGENCY

POLICE /FIRE/AMBULANCE: 111

MEDICAL CENTRE: (03) 2266 123

TUATAPERE COMMUNITY WORKER:
027 757 5983

HAUROKO VALLEY SCHOOL OFFICE:
(03) 2266 753

WAI AU AREA SCHOOL OFFICE:
(03) 2266 285

TUATAPERE CEMETERY TRUST:
(03) 2266 065

CHAMBERS SERVICE STATION:
(03) 2266 654

TUATAPERE SERVICE STATION:
(03) 2266 475

TUATAPERE FOUR SQUARE:
(03) 2266 898

TUATAPERE OUTDOORS & HARDWARE:
(03) 2266 363

Special thanks to



WAI AU AREA SCHOOL
Year 1-13 Education

Live to LEARN, LEARN to Live

for their support with the printing

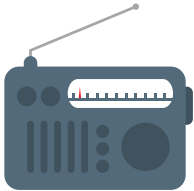
Paula McKenzie, President

Hi All!

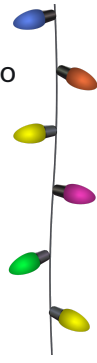
I know it isn't even Winter yet, in fact we are barely into Autumn but we are thinking well ahead and planning a Mid Winter celebration. It will be one that definitely includes lots of lights - so don't store your Xmas lights too far away as you will need them come June /July! More on this in the next couple of months.

We always like to see new faces with new ideas. Please consider joining us at our monthly meetings held at the Waiau Town and Country Club, the 3rd Wednesday of each month 7:30pm during the summer months, 7pm during the winter months!

Did you know Tuatapere has it's very own Radio Station?



Tune into
88.2 FM - Tui FM!
Hits of the 80's & 90's and
today's current music!



Welcome

TO TUATAPER E

Birchwood Hunt & Hounds

6th-10th April



Events Open to the Public

8th April

Come see the Judging of the Hounds
Waiau Town & Country Club grounds
9:30am - 3pm

9th April

Hoc Down

at the Waiau Town & Country Club
Friday night- come along and enjoy
Dunedin Band "Road Block"

All members & their invited guests welcome!

Tickets \$40 pp (non-members)
\$20 pp (members)

All enquiries to the WTCC



DUCKSHOOTERS SHOOT



WESTERN SOUTHLAND GUN CLUB

PUKEMAORI GROUNDS

SUNDAY 11TH APRIL 11.00 AM START

SPONSORED BY CUSTOM GUNS

60 TARGETS – SPORTING CLAYS

ENTRY \$45 AMMO \$13 (FIREARMS LICENCE REQUIRED)

BBQ LUNCH AVAILABLE

GOOD PRIZE FOR DRAWN SCORE



ANY ENQUIRES

CONTACT DES CHAMBERS

(03) 2266654 WORK HOURS (03) 2266655 –EVENINGS



Tuatapere and Districts Area Businesses

Are you interested in ...

- Networking together to build a prosperous community
- Stay informed with what's happening in yourArea/Town
- Leverage opportunities to maximise business
- Share ideas, gain or give advice to others.

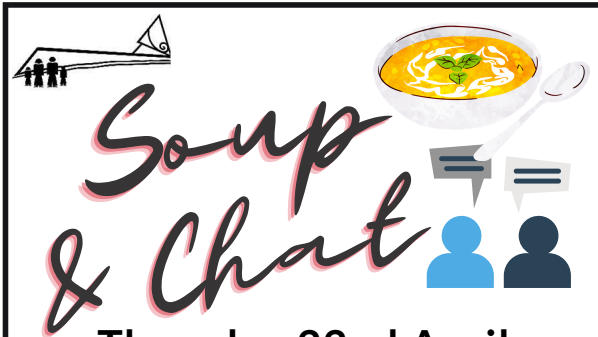
If you are also interested in being part of a group that works independently and at times in connection with Tuatapere promotions, your thoughts and ideas are most welcome and we wish to invite you to a get together at the

Waiau Town & Country club
on 19th April 7.00pm

Small or large businesses, book-a-bach, B&B'S & contracting business welcome!

Blackmount Trail Ride 2021

Julia Waikato, Principal/Tumuaki, Hauroko Valley Primary School



Thursday 22nd April

**Tui Base Camp
11am to 12:30pm**

**Come one, come all join in a
cuppa soup and toasty or
grilled cheese, or even a scone
with the soup!**

Everyone who is thinking of coming could
you all book with me for catering etc
really don't want to run out of soup ...

See you all there!

First of many and free

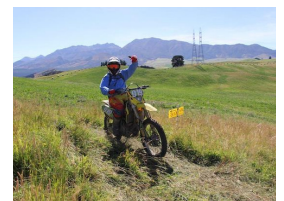
Contact Keri Potter **027 757 5983**

2021's Blackmount Trail Ride was held on Saturday 13th March. What an E P I C day - phenomenal trails across five farms showcasing a variety of terrains including farmland and forestry set against the backdrop of the Takitimu Mountains. Trails for fun, adventure, and challenge along with a gourmet BBQ lunch sourcing the best local produce.

To conclude the day families, friends and community members met at the base for the David Gray Memorial Hill Climb. A stunningly special trophy had been handcrafted by Tim Blair-Edie and was presented to the fastest rider to make it to the top. Congratulations James Dickson - taking out the David Gray Memorial Hill Climb 2 years in a row!! 34.05 seconds (last year 37.36).

The Blackmount Trail Ride is Hauroko Valley Primary School's major fundraiser with all fundraising going towards providing opportunities for our children. It is made possible thanks to so many superb people and organisations. We are incredibly grateful to the landowners for enabling access to the trails. We are thankful to our sponsors for their amazing contributions. Thanks also to our school community and the wider community for supporting the Blackmount Trail Ride. See you all again in 2022 and if you haven't made it yet - please join us it really is a fabulously fun family day out!

Photos kindly supplied by Kate Gray



FOUND / LOST PROPERTY!

Outside **Chambers Repair Service**, 1 set of keys.
Phone (03) 226 6654 to confirm ownership.

Accidentally left at **Chambers Repair Service**, prior to Christmas, ONE item of clothing. The person was sending away other items, but has left one item in a bag which they left behind. If you think this was you, please call in to collect.

TUATAPERE AMENITIES TRUST

2021 funding applications now open!

Application forms are available now and these may be collected from

- Tuatapere Service Station
- Chambers Garage
- Tuatapere Outdoors and Hardware

Completed application forms need to be submitted by **30th April 2021**.

The Trust wish to remind applicants that funding for wages, administration and operational costs or retrospective funding will not be granted.

SENIOR CITIZENS

Senior Citizens is a group of over 60s that meet every **Friday afternoon at 1pm** at the rooms behind the RSA Hall. We are always looking for new members so if you would like a fun afternoon playing bowls, cards or just catching up with friends, come and join the group.

Contact: Olive Bennett Ph (03) 2266 477

WAI AU VALLEY PRESBYTERIAN CHURCH

Services for all ages! Every Sunday at 10.30am.
Tuatapere Presbyterian Church, Main Street, Tuatapere.
All welcome to join us. For information please contact:
Chris Howden Session Clerk 021 477 999

WESTERN SOUTHLAND WOOLCRAFT GROUP

Spinning, Felt, Weaving, Knitting, Crochet.
Other crafts welcome!

1st Wednesday of the month. 10am - 3pm. BYO Lunch.
For details please contact: **Helen Todd 022 378 9743**

NEED A JP?



The following Justices are available by appointment:

Tuatapere

Keri Potter 027 526 3137
Donald Egerton 027 432 5407

Te Waewae Bay

Shirley Whyte 027 504 5220

Blackmount

Nicky Baker 0276435880

TUATAPERE & DISTRICTS LIONS CLUB PROJECT



SUPER DIRT

Super dirt bags are now weighed so more in each bag!

\$8 per bag - ready for your garden!

Super dirt can be collected from:
Cracks Yard, Grove Burn Road,
in the mornings Monday to Friday.
Weekends by arrangement.

Delivery by arrangement - (but not guaranteed)

Phone Trevor (03) 225 5864 or
Stephen (03) 226 6817



TUATAPERE COMMUNITY WORKER

Room 5 Medical Centre
69A Orawia Road

Monday - Thursday 10am to 3pm

Keri Potter **027 757 5983**

Email: tcworker@xtra.co.nz



WAIAPU MEMORIAL LIBRARY

Library Hours: Fridays

10:00am - 11:30am

2:30pm - 4:00pm

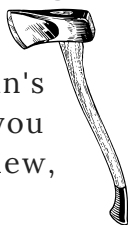
7:00pm - 8:00pm



The Library now has Wi-Fi. Available free to all library members. Just ask one of our friendly volunteers to help you set up your device.

TUATAPERE BUSHMAN'S MUSEUM

Orawia Road. If the Bushman's Museum is not open when you have visitors who wish to view, you can contact:
Lindsay Faulkner (03) 226 6650 to arrange a suitable time.



TUATAPERE ENVELOPES

Envelopes printed with the "Tuatapere on Nature's Edge" Logo can be purchased at Country Corner Craft Shop
1A Orawia Road
Cost \$3.00 per 10



TUATAPERE MAINLY MUSIC

A pre-school music and movement-based playgroup.

Mondays during the school term at the Tuatapere Presbyterian Church Hall.

Music session starts at 10am followed by a time of morning tea and play. \$2 per family.

Morning tea is provided for all.

New families welcome!

Find us on Facebook:

"Tuatapere Mainly Music"



mainly music

For more information contact Heidi 022 315 3326

Get your car washed, dried and windows cleaned - Price arranged on request!

Contact: Rex Hibbs
Flat 1/26 Orawia Rd, Tuatapere

COMMUNITY NOTICEBOARD

TUATAPERE SCOUTS



Are you and your family looking for something that will foster personal development, create a sense of community and at the same time challenge you or a school age member of your family? Have you thought of joining Scouts?

At Scouts we have Kea's for children aged 5-7 yrs, Cubs for children aged 7- 9 1/2, Scouts for 9 1/2 -15 yrs.

We also have a need for leaders so we can deliver our programmes effectively. Please contact:

Leader Anne-Marie 027 688 5828

Group Leader Quinton 027 223 4842 or (03) 226 6969

Please Note:

Next term we will be changing our programme to a **Monday afternoon/night**. First afternoon/night will be **10th May**.

TUATAPERE PRESBYTERIAN CHURCH MARKET DAY

The church market is held at 10am every 3rd Saturday of the month in the Tuatapere Presbyterian Church Hall, Main Rd, Tuatapere. ALL welcome! Come and browse!

Market Day:

Saturday 17 April 2021

(Next market day: 15 May 2021)

New Stall holders including plants, free range eggs, local honey, local crafts and more! Coffee & Tea available too!

If you would like a table for hire please text:

Tim Vanderpijl 027 716 6478

TUATAPERE PLAYGROUP

23B Orawia Road. **Friday Playgroup 9am - 12pm**

All parents and children welcome!

Children's morning tea is a packed lunchbox from home at Playgroup (as opposed to a shared morning tea).

Any queries please contact:

Gemma Bennett 022 040 3368 Alice Harris 027 270 0363

CLIFDEN PLAYGROUP

45 Otahu Eastern Bush Road.

Every Wednesday (during School Term) 9:30am - 12:30pm.

All mothers and children welcome.

Bring packed lunchbox for your child's morning tea.

Any queries to: Lynley Patterson 027 429 7436

TUATAPERE TOY LIBRARY

Tuatapere Toy Library has been a toy swap/hire service provided to the young families of Tuatapere and surrounding since 1989.

The purpose is to create opportunities for the little people of our community to have accessibility to toys. A small contribution of an annual membership allows families to join the group and have access to the toys.

For more information or questions please text or ring Nathalie Pahl on **027 4759 075**



WAI AU SQUASH CLUB

2021 season!

Squash is a great way to get a bit of exercise over the winter months, have some fun and meet some new people.

Women's Interclub - Tuesday evening.

Men's Interclub - Thursday evening.

For more info please contact:

Nic Mitchell **021 815 531** or

Sam Egerton **027 2505 477**



TUATAPERE & DISTRICTS PROMOTIONS INC

We are always interested in hearing new ideas and seeing new faces. Everybody is welcome!

We meet at the Waiau Town & Country Club, 3rd Wednesday of the month at 7:30pm!

Contact Paula McKenzie **027 4346 777**

Our Next Meeting: Wednesday 21 April 2021

DO YOU HAVE SPARE TIME DURING THE DAY?

Would you like to have a cuppa, chat and play chess, checkers and/or dominoes.

If you are interested please contact

Keri Potter **027 7575 983**

TUATAPERE AMBULANCE

Did YOU Know?

The Tuatapere Ambulance is a funded service by the Tuatapere Lions Club, for the residents of Tuatapere & Districts.

Should you receive an account for this service from St John, please forward it immediately to:

The Treasurer

Tuatapere Lions Club

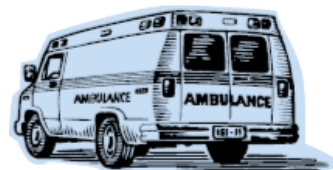
PO Box 47

Tuatapere

Sometimes we experience difficulty in receiving the invoices for YOUR trip - so PLEASE do forward them on to us.

Thank you!

Tuatapere Lions Club Charitable Trust Ambulance Committee



WESTERN SOUTHLAND HEALTH SHUTTLE

The Western Southland Health Shuttle Service travels from Otautau, Ohai, Nightcaps, Tuatapere, Riverton - covering all of Western Southland. We also connect with the Invercargill-Dunedin shuttle.

The Western Southland Health Shuttle operates Monday - Friday (excluding Public Holidays).

Bookings are required by 3pm the day prior to transport.

Ph: 0800 103 046 to book.

Please book as soon as you receive your appointment.

TUATAPERE VOLUNTEER FIRE BRIGADE

We're on the lookout for members to join this rewarding organization. We are looking for persons who are, ideally, available throughout the day.

If you think that you would like to try this (sometimes lifelong) commitment, then please feel free to come and try it!

We train on Tuesday nights at 7:30pm during daylight saving and 7pm through the winter months.

We look forward to meeting with you.



PICKLEBALL

We are fortunate to have for our enjoyment a local all-weather pickleball facility at the Clifden Hall, which now has full toilet and kitchen facilities.



This exciting, easy to learn, fun game, is suitable for over 9 year old's and anyone with reasonable hand-ball coordination. We currently have players in their 70's grateful for the, easy on the joints, exercise gained.

Pickleball, which is a **hybrid of tennis, badminton and ping-pong**, is the fastest-growing sport in America.

Come along and join us for a fun evening **every Friday**.

The court is open for play from **5.30pm**

Beginner's tuition is available.

Private hire at times to suit is also available.

Bring gym shoes only as all other gear is provided.

Phone Philip **027 9099 649** for info.

LOOKING FOR BOOKS/OLD PHOTOS

I am writing a book on the history of the Waiau River, well the whole catchment really.

I'm looking for books on the history of the districts in the catchment such as Tuatapere, Papatotara, Clifden, Manapouri etc, particularly stories about the early days along the river and associated farming and industries, gold, disasters, milling, exploring etc.

I'm also looking for older photos of bridges, punts, the Belmont dredge, mining etc.

Please contact: **Lloyd Esler Ph. 03 213 0404**

email: esler@southnet.co.nz or post to:

15 Mahuri Road Otatara RD9 Invercargill 9879

IT'S NOT JUST ABOUT RUGBY



IT'S ALSO ABOUT BEING AN EGG WITH YOUR **MATES**

WAIU STAR  JUNIOR RUGBY

SALVATION ARMY FAMILY STORE TRUCK

The Salvation Army Family Store Truck will come out and collect large amounts of your pre-loved furniture & other household items. This service is free.

Please call the store to organise your visit on **03 214 5380**



Family Store

Donate. Buy. Help.



familystore.org.nz

TUATAPERE HEALTH & GIFT SHOP - Riverton Pharmacy

We now have two courier drops for prescriptions for our Tuatapere customers:

1:00pm and 4:45pm.

The Health & Gift Shop is open from 12:30pm - 5:30pm.

If we can help in any other way, please contact

Riverton Pharmacy **(03) 234 8515**



COUNTRY CORNER CRAFTS

Come in and browse and see what we have to offer. Hats, scarves, children's knitwear, cards, jewellery, woodware, sewing, jams, pickles, sauces, etc.

Tuatapere souvenirs "On Natures Edge" logo are always available.

Is anyone interested in joining to sell their crafts? You are more than welcome to contact us.

Want to volunteer your time & work in the Craft Centre - let us know! It's a great way to meet people!

If you wish to view the shop and it is closed, please ring

Louise Greber (03) 668 6001 or

Lyla Sherriff (03) 226 6187

and they will open it for you.

The Man behind Tuatapere Freight

Tell us a little about yourself ...

My name is Brandon Harpur and I'm the new owner of Tuatapere Freight (formerly Tui 2 Town Freight). I'm into all things outdoor especially hunting and fishing!

What did you do before taking over this business?

Forestry truck driving and digger work.

What are your hopes for Tuatapere Freight?

My hopes are to see the business grow through new clientele and maintaining great working relationships.

What else do we need to know about Tuatapere Freight?

Tuatapere Freight runs to and from town Monday to Friday. Weekends by arrangement.

Tuatapere Freight can cart most things - such as wool, tractors, motorcycles, timber, steel, iron, household items and all other general freight requirements.

Bigger items such as tractors, steel & timber are best with a couple of days notice. All other general freight - the earlier I know on the day, the better greater chance of getting it that day. But it does help to know any freight pick ups by 12pm at the latest!

Contact Tuatapere Freight and/or Brandon on

027 436 4360



Tuatapere Freight

(formerly Tui 2 Town Freight)

RUNS MONDAY TO FRIDAY
WEEKENDS BY ARRANGEMENT

Phone Brandon

027 436 4360



Riverton Electrical Ltd

The Bright Green Sparks
Industrial, Commercial, Residential
Member of Sustainable Electricity Assoc. of NZ Inc (SEANZ)

0274327215

Email: rivertonelectrical@gmail.com
Address: PO Box 10, Riverton 9847

Proud to support Western Southland - keeping it local!

**Call today to discuss your energy needs
for the home or business**



Specialists in:
Renewable Energy
Energy audits
Energy management
Home ventilation
Heat Transfer
Dairy maintenance
Effluent systems (Electrical)
Preventative maintenance
Freeview TV

TUATAPERE HANDYMAN SERVICES

Barry Bennett
(03) 226 6730

- **Painting - Interior/Exterior**
- **Waterblasting**
- **Carpet & Upholstery Cleaning**
- **Spider & Fly Spraying**
- **General Repair Work**
- **Lawnmowing**
- **Hedge Trimming**
- **Weeding**





You may have seen this recipe doing the rounds on social media. It is well worth trying. Easy to make and delicious.

Baked Feta Pasta

Ingredients

- 2 cups of cherry tomatoes
- ½ red capsicum, sliced
- ½ red onion, sliced
- 3 Tablespoons olive oil
- 4 cloves garlic
- 1 block of feta cheese
- 3 sprigs of thyme
- 300 grams of pasta of your choice
- Salt and pepper

Directions

Preheat the oven to 180 degrees.

In a large ovenproof dish combine tomatoes, red capsicum, red onion, garlic and most of the olive oil. Season with salt and pepper.

Place the feta into the centre of the tomato mixture and drizzle top with remaining olive oil. Scatter thyme over tomatoes. Bake for 25 to 30 mins, until tomatoes are bursting and feta is golden on top.

Meanwhile, in a large pot of boiling salted water, cook pasta according to package instructions.

Reserve ½ cup pasta water before draining.

Once tomato mixture is cooked mix the feta through the tomatoes, add the pasta water and pasta, stir until completely combined.

Enjoy!



Shearing magazine

Des Williams (editor)

Tel 07 839 2891 : Mob 0274 833 465

Email : shearingmag@xtra.co.nz

Member NZ Guild of Agricultural Journalists and Communicators (Inc)

LAST SIDE PUBLISHING LTD

PO Box 102, Hamilton 3240, New Zealand

Shirley Whyte

Your local real estate specialist living & working in Western Southland



fet: Friendly service, reliability,
sound local knowledge in
Western Southland,
Te Anau & Stewart Island

Harcourts

Harcourt Real Estate Ltd Licensed Agent REAA 2008



M 027 504 5220 O 03 214 4080

E shirley@harcourtsinv.co.nz

W www.harcourts.co.nz

Sewing and Mending Services Available

Experienced machinist offering fast, reliable service with very reasonable rates.

I will mend/make anything from zip replacements to curtain making - just ask!

Free quotes and pick-up delivery service within Tuatapere.



Contact **Deborah**

(03) 226 6783 or 021 0305 667



GREAT FREIGHT RATES

**Same Day
Door to Door
Monday - Friday**

**General Light
Freight Service
No Rural Surcharge**



- Fresh & Chilled Freight
- Meat & Vegetables
- Flowers & Chocolate
- Bottled Milk
- Prescriptions
- Vet Supplies
- Ag. & Vehicle Parts
- Hardware
- Oil & Lube
- Ammo & Chemicals

**Invercargill - Winton - Drummond - Otautau
- Tuatapere - Ohai/Nightcaps - Riverton**

027 340 5845

bulletcourier8@gmail.com

bulletcourier.org

War Time Love and Loss

George Charlton

Continued from March Issue

Squadron Leader Raymond Johnstone Watson was buried in the Des Carmes cemetery in Clermont-Ferrand in France.

My father and mother died in 1996 and I remember my father never mentioned much about his time with the army in the 2nd World War (1939-1945). He was fighting the Japanese in the Solomon Islands. I was born in 1945 and growing up in Tuatapere in the 1950s. Most returned servicemen never really talked about the war, unless they were together and then only about the good times they spent as comrades. It was only after my mother passed away 6 months after my father that I found my father's war records. He had a writing desk that was given to his father in the 1890s by an old sea captain and has been handed down to the sons in the different generations and now belongs to me. Going through the records I found messages that had been sent to my father (Lex) informing him of his sister Nancy's sudden death and a few days later of his future brother-in-law, Ray Watson. A few months after that Dad's father died. I have been told that the death of his daughter Nancy and that of his future son-in-law was too much for him and he died of a broken heart. My father, being overseas, was unable to get home for any of the funerals and arrived home in early 1945.

I have been able to obtain Ray Watson's war records and, after coming across this feature in the Southland Times in July 2000, I felt it appropriate to write this for the younger generation.

I have noticed that in every ANZAC parade in recent years the number of young people participating has increased. When we look back we only realise now the men who fought overseas



for you and I was a great sacrifice, for there were many who never came back.

Waiau Town & Country Club

Meals (homemade goodness) available Thurs, Fri, Sat & Sun evenings from 4pm to 9pm.

Kid's menu. | Happy to cater for dietary requirements. Please pre-book for groups of 8 or more.

Club Opening Hours:

Mon - Thurs 4pm till close.

Fri 3pm - close.

Sat 12pm - close.

Sun 3pm - close.

Functions/Events/Meetings/Birthdays/
We can cater! Just call to book,
ask for Gary to discuss your options.

Upcoming Events:

***STEAK NIGHT, STEAK NIGHT** - every Thursday night is steak night - \$25 steak meal - yum!!

***Sunday Fundays** - keep an eye on our facebook page for upcoming dates - Bouncy Castle & more.

*** BIRCHWOOD HUNT & HOUNDS** - 6th-10th April
Dog Show 8th April & Band 9th April.

***BAND! BAND! BAND!**

Dunedin band 'ROAD BLOCK'

9th April - see you there.

*** Mother's Day** - Sunday 9th May
Get in early, make a booking now.

*** MEMBERS DRAW & RAFFLES**

drawn every Friday night! Approx. 7.30-8.30pm.

Keep an eye on our Facebook Page for more details on upcoming events

Annual membership/subscription

Annual membership is \$50 or \$30 for pensioners.
Want to become a member, pop into the club & sign up!
Or email or call us.

Phone: 03 22 66 489

Address: 41 King St Tuatapere

Email: waiautcc@gmail.com

Facebook: facebook.com/waiautcc

Courtesy Van Available

We look forward to seeing you!

A Sport for All Ages

Are you looking for a sport that is challenging and fun that doesn't demand you put your body on the line?

Have you thought of small bore rifle shooting which is known in Southland as target shooting?

It doesn't matter how big you are, how strong you are or how fit you are shooting is a safe and fun activity for young (over 12 years) and old because it is a sport of skill not strength.

Target shooting consists of shooting paper targets over a distance of 20 Yards (18.3 meters) with a .22 calibre rifle.

In Western Southland we have two clubs, Nightcaps and Tuatapere.

All Clubs run through the winter months usually starting about the middle of April and have gear available that the beginner can use, along with people who are willing to coach you and lead you through your first shot or get you set up if you haven't shot for a while.

Nightcaps meet on a Monday night and the contact person is Raeleen Sinclair (03) 225 7834

Tuatapere meet on a Wednesday night and the contact person is Kevin Daly (03) 234 5162 or Quinton Erskine (03) 226 6969

<https://www.sporty.co.nz/targetshootingsouthland>





Mackenzie Brown
SHEEP CONTRACTOR

Crutching
Tailing
Sheep Conveyor

Sheep Conveyor

Drenching
Ear Tagging
Capsules
Vaccinating
Pour on
2 way draft

Mackenzie
027 9638318

Southland Community Law Centre
5 Tay Street, Invercargill

Phone: (03) 214 3180 Fax: (03) 214 3170
Freephone: 0800 550 800 (outside Invercargill city only)

**Free Legal Information
& Advice for the
Community of
Southland**




"Providing Free Legal Advice & Information"
AWHI MANA TŪHŪ TŪHŪ MĒ MĒ IS MĒRURŪ



DAGWOOD DAGGING

Available now to all new and existing customers for all your crutching requirements.

3 Stand or Single trailer available
7 days a week, wet or dry.



No job too big or too small.
Competitive rates

Jeff Chambers
027 3042 241

We want to hear from YOU!

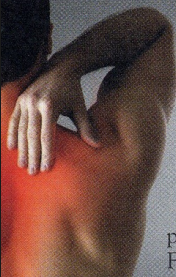
Do you have an idea for content in the Western Wanderer?

Is there something you'd like to see or read about in the Western Wanderer each month?

We are always on the lookout for new contributions - it doesn't have to be every month (but it can be!)

Email us at
yourwesternwanderer@gmail.com
OR
drop us a note in the letterbox outside the Toy Library (18 Orawia Rd, Tuatapere)





SIMPLY SOOTHING
Soft tissue pain and tension release

ANN SUTHERLAND
Certified Bowen Practitioner

2475 Ohai-Clifden H/way
Orawia R.D. 2
Southland 9682

phone 03 225 5716
Fax 03 225 5716

Bowen Therapy is a gentle soft tissue manipulative therapy. Through manipulation, tension in soft tissue is released reducing pain and restoring movement and mobility. Also offering Scenar Therapy.



Registered **ELECTRICIAN**

For all electrical work
No job to small
A/Hours service available

Jay Brownlee
8 Carlyle Street, Tuatapere 9620
A/H 03 226 6673
Mob 027 4965 863
sparkieintuatapere@gmail.com



TUATAPERE TE WAEWAE *Community Board*

Margaret Thomas, Board Chair

As you may have noticed, there has not been a report from the Community Board for a while. This is because I have been unwell, but I am happy to report that I am on the mend. Thank you to Anne Horrell who chaired the last meeting.

Southland District Council News

Long Term Plan

The Southland District Council 10-year plan should arrive in your mailboxes any day. This is your chance to have your say. You can make submissions online or make a written submission or come and present to council. (all the information is online).

Temporary Speed limits

The speed limit on a stretch of road between Otautau and Tuatapere, an area known as Rackles Hill has been reduced to 50kmh. Please look on the SDC web site for further information.

Monowai Bridge

The Monowai Road suspension bridge closures. Maintenance work will begin on 24 March 2021. The closures will occur from 6pm to 6am, Sunday through to Saturday. Please read the information on the SDC web site.

Monkey Island

Further work is being carried out at Monkey Island, creating a family-friendly space for Southlanders and visitors to enjoy.

Community Partnership Fund

Applications have closed for the second round of the Community Partnership Funds.

Clifden Hall

Another meeting has been held with the Clifden Hall Committee. This meeting was a meeting for all rate payers and the wider Clifden community. If you want to retain this facility you need to get in touch with Rebecca.

Trees WAS

A meeting was held with WAS staff, SDC staff, contractors and Community Board members. Many of the trees that are on SDC land have become unsafe and need to be removed. There are also some unsafe trees on another section of the boundary. These trees are on DOC land.

MILLARS
- PLUMBING
- GAS FITTING
- DRAINLAYING
- LICENSED BUILDER
Master Plumbers
Ph 027 4340 705 or 03 225 8567

Aaron Cranston Building Ltd
027 252 7933
✓ Renovations
✓ Extensions
✓ New Builds
✓ Sheds/Farm buildings
✓ Decks
✓ Pre-purchase house
Inspections
Call us for any building requirements
Ph 027 252 7933 email: aaroncbltd@gmail.com



George Harpur, SDC Councillor, Waiau Aparima Ward

Hi and welcome to the April report. Autumn is upon us with cooler weather and shorter days. Time to stock up on dry wood for those cold nights which will soon be with us.

On the local scene our rates increase is the hot topic with some quite dramatic increases for some including me. I can assure you all that this matter is being looked into with urgency as it appears that we have some issues here. By the time you receive this edition the submission closing date may have passed but if not get your submissions in and thank you all for the effort and a special thanks to those that have already raised some issues that appear to have slipped through our system somehow. Unfortunately our rates will rise but the variance needs some adjustment I feel.

On the council scene there is still much activity going on with the bridges upgrade progressing steadily. The Monowai suspension bridge is being upgraded at the moment, this will be not without some inconvenience to the locals however it has been discussed and means are in place to minimise any issues so thanks for your patience and at the completion of this project we may have a bridge that is back to class 1 standard. With meetings regarding the LTP process, it is quite a busy time for both Councillors and staff. Over the years we have been attempting to achieve a lot with little costs and I feel you can all see the result of sweating the assets as bridging has been one lot of infrastructure to suffer. We must now face reality and rebuild and maintain our assets up to the required level. In the short term we may have to borrow considerably, these assets will not be worn out in the time span of the current population so repayment over many years may be an option.

I recently attended the monthly meeting of the Oraka/Aparima Runaka at the Colac Bay Marae, with some interesting subjects being discussed. The planting of native trees around the greater region, this is a little restricted as the supply of such plants is somewhat limited, the promotion of local facilities, maintaining the houses and tidying up at Rarotoka, cycle trails etc: overall a very enlightening meeting and worth the visit.

Cheers to all!

Phone: Anita Green 027 506 2418
Tuesday 9-5pm, Thursday 10-8pm, Friday 10-5pm - Appointments are encouraged.

CHAMBERS REPAIR SERVICE

45 Half Mile Road, Tuatapere

Ph: (03) 226 6654

- 24 hour Self Service Fuel
- Full Mechanical Workshop
- Agents for Wide Span Garage
- NZ Post Centre
- Your Local Fish & Game Agent



Duck Shooting Season
1st May



Duck Licences on sale from 11th March

Cost: Adult \$98, Junior \$23, Child \$4

Opening Weekend

20 Mallards, 10 Paradise, 5 Black Swan

Daily Limit per day thereafter

10 Mallard, 6 Paradise, 5 Black Swan

Day Licences available from 11th May



PASTURE METER READING THAT'S QUICKER
AND EASIER, WITH AT THE GATE REPORTS

- Specialist in quality pasture meter reading with advanced sensor technology
- Provide 200 measurements per second or 18,500 readings over a single 500m pass
- Provides a fully integrated electronic support system
- Provides a secure web-based storage of information with easy access
- Prompt generated feed wedges for rapid decision making and seasonal comparisons
- Generate reports at the gate, supplying valuable pasture cover data and comparable results every time
- Improve health & increase animal hydration
- Enhance production & improve water quality
- Reduce bacterial/algae contamination of trough water

**CLEAN TROUGH WATER MEANS
IMPROVED LIVESTOCK HEALTH**


Now 2 bikes
available
for pasture
metering



Brett George • P 027 351 3408

E platemeterservices@gmail.com





**BEN MCMASTER
BUILDING**

Ph: 027 202 7955
benmcmaster@live.com

- Licensed Building Practitioner
- Sheds, renovations & new homes
- Based in Western Southland

You dream it, we'll build it

WANTED TO BUY
Possum Fur, Hard deer,
Antler, Deer Velvet.
Phone Leith 027 496 3721

CHAINSAW SHARPENING
All chainsaw chain sizes precisely sharpened and
rakers taken down accordingly, guaranteed results
Chain only \$10 Taken Off & Refitted \$13
Please phone (03) 2266940 evenings

For all your fencing requirements
WESTERN FENCING
SHEEP | DAIRY | DEER



Call BEVAN 0277 413 213

Emma Wright
Coming JUNE 25
save the date

**Raising
Body
Confident
Kids**

An evening for
parents of toddlers to teens

"I wanted help to make sure I
wasn't passing on my
negative body issues to my
daughter. I got SO much more
than I expected! I can say it's
changed our lives."

7.30 pm
Tuatapere
www.emmawright.co.nz



Raising
Body
Confident
Kids

CELEBRATION OF SOUTHLAND SERIES

Timber Boom Town of the Fifties



from the history archives of Malcolm Garrett, thought to have been written in the late 90s or early 2000s

Tuatapere in the 1950's was at the height of its economic activity. The town was surrounded with up to 19 sawmills working the remaining native forest mainly on the West of the Waiau River. Most of these mills would be considered very small by today's standards and were located close to the source of logs at Rowallan, Dean Forest, Lillburn, Alton and Groveburn, Happy Valley and Papatotara. Many had small clusters of worker housing built near the sites. However, in Tuatapere itself, mill owners were building worker housing of a better standard and mill staff were gradually shifting into the town itself. Thus when the mill was shifted there was no upheaval for workers, there was better social atmosphere and they were handier to school.

The other arm of prosperity was the farming boom, led by the demand for wool during the Korean conflict. No fewer than five Stock and Station Agencies had depots or retail outlets in the town. Who can remember NZ Loan & Merchantile, Dalgety's, National Mortgage & Agency, Wright Stephenson and the last survivor, Southland Farmers' Coop? With amalgamations, take overs and rebadging all the above names are gone. There is one remaining retail Agency in town today, Reid Farmers, the new owners of SF Coop. Wrightsons, Alliance, and PPCS maintain a presence as stock agents. Many of the farmers employed a married couple or single man on the place, adding to the local economy.

Down the Main Street in the 50's you could go into Hughes Shoe Store for all footwear and repairs, visit the Red Lion Café and Milk Bar, get your short back and sides at Rodgers the Barber, get magazines and books at the Stationery, visit the Britonia Picture Theatre, buy electrical and other hardware at Hendersons or Gibbs, shop for Menswear at Souness & Lawrence, get Ladies Clothing at Langmuirs along with your groceries, paint and fishing tackle and pick up your prescription at McClymont's Chemist Shop. There were three grocery stores in total. Fresh milk, bread and meat were delivered daily by the local businesses. There were full banking facilities, the

trains ran every day with freight to town and back and two different bus companies took daily coastal and inland routes to Invercargill and return.

The Post Office with its Banking, Postal and Government Agency work plus the manual telephone exchange offered a very personal service - they knew who and where everyone was.

Engineering and Motor Garages did good trade supporting both farming, milling and general needs. At least five businesses had plenty of engineering work as well as supplying fuel and servicing. Builders had plenty of work as did the local electricians and plumbers who regularly took on apprentices from the local school. Most boys left at the end of fourth form unless they were very talented, because they were so much in demand in the work force, as bushmen, mill workers, and junior labourers. The girls too found plenty of jobs either locally or in Invercargill. In addition there was the NZ Forest Service employing more than fifty men in the planting and care of the exotic and indigenous State owned forests nearby. The wooden cheese crates were produced from kahitaea cut and manufactured in the village at the "Box Factory". Another factory made handles and dowelling from local beech. Nearly all milled timber was taken to the railway and loaded onto wagons. Very little went out by road and even fewer logs.

Transport companies provided logging and farming support, with DT Kings being responsible for stock movement and fertiliser connecting with Rail depots and way stations along the line. There were distance restrictions for road operators then. Tuatapere Transport and CS McIntyre were based in Tuatapere. Kings were at Pukemaori - or "Kingtown" as it was known.

... to be continued next issue

FORDE SHEARING LIMITED

Available for all new and existing clients

For all your shearing and
crutching requirements

Please phone Darin or Julie Forde

(03) 235 8853
027 229 7760

Tui Base Camp



**Open from 7am
every day!**

Upcoming Events

- ★ **Oysters Available**
- ★ **Duckshooting Breakfast - Sat 1st May**
- ★ **Sunday Pool - 2pm every week
(guaranteed \$100 first place)**
- ★ **Every Thursday Happy hour 5.30-6.30pm
& Free Pool all day**
- ★ **Friday Dinner Special - Indian Curry**

For all of your dine in and takeaway requirements including:

In-house roasted Amore Coffee

In-house made pies, sausage rolls,
cheese rolls

Range of breakfast options

Packed lunches

Catering

Phone: (03) 226 6250

www.tuibasecamp.co.nz





CHECK OUT THESE... EGG-CELLENT DEALS

<p>\$15.99 EACH</p> <p>Jim Beam Gold CC Premium 7% 330ml 6pk cans</p>	<p>\$18.99 EACH</p> <p>Southern Comfort 375ml 10pk cans Jack Daniel's 6pk 330ml bottles Jack Daniel's 8pk 330ml cans</p>	<p>\$19.99 EACH</p> <p>Barrel 51 5% 12pk bottles</p>	<p>\$21.99 EACH</p> <p>Cruiser 12pk bottle range</p>	<p>\$21.99 EACH</p> <p>Jim Beam & Cola/CC (incl zero) 4.8% 10pk cans Jim Beam Gold 7% 8pk cans</p>	<p>Not Stocked</p> <p>ODD Company 10pk can range</p>	<p>\$21.99 EACH</p> <p>Jack Daniels & Cola Double Jack 250ml 10pk cans</p>
<p>Not Stocked</p> <p>Effen Vodka 10pk bottle range</p>	<p>Not Stocked</p> <p>Billy Maverick 12pk cans</p>	<p>\$25.99 EACH</p> <p>Smirnoff Ice DB Guarana 7% 12pk cans</p>	<p>\$29.99 EACH</p> <p>Cody's 7% 18pk cans</p>	<p>\$31.99 EACH</p> <p>Woodstock 7% 250ml cans 5% 330ml bottles all 18pks</p>	<p>\$36.99 EACH</p> <p>Long White 15pk bottle range</p>	
<p>\$9.99 EACH</p> <p>Hardy's VR 1L range</p>	<p>Not Stocked</p> <p>Taylors Promised Land range</p>	<p>Not Stocked</p> <p>Villa Maria Private Bin range (ex PN/Syrah)</p>	<p>\$12.99 EACH</p> <p>Stoneleigh Marlborough / Lighter ranges</p>	<p>Not Stocked</p> <p>19 Crimes range</p>	<p>Not Stocked</p> <p>Jules Taylor range (ex PN)</p>	<p>2 FOR \$25.00</p> <p>Canterbury Cream</p>
<p>\$34.99 EACH</p> <p>Blackheart / Woodstock 1L</p>	<p>\$35.99 EACH</p> <p>Malibu / Kahlua (incl salted caramel) 1L</p>					
<p>\$35.99 EACH</p> <p>Gordons Pink / Sicilian 700ml Gordons & Smirnoff 1L</p>	<p>\$36.99 EACH</p> <p>Teachers / Russian Standard / Stolen Rum all 1L</p>	<p>\$39.99 EACH</p> <p>Absolut / Ballantines Beefeater 24 700ml</p>	<p>NOT PRICE! \$39.99 EACH</p> <p>Jim Beam 1125ml</p>	<p>\$41.99 EACH</p> <p>Canadian Club (incl spiced) 1L</p>	<p>\$46.99 EACH</p> <p>JB Devils Cut / JB Black 1L Makers Mark 700mls</p>	<p>\$49.99 EACH</p> <p>Malfy 700ml range Jameson 1L</p>
<p>\$52.99 Not Stocked</p> <p>Appleton 1L</p>						
<p>\$53.99 Not Stocked</p> <p>Haku Vodka / Roku Gin 700ml</p>	<p>TWO FOR \$72.00</p> <p>Jack Daniels (incl Honey, Fire & Apple) El Jimador range (ex Anejo) Old Forester all 700ml or \$37.99 each</p>		<p>Not Stocked</p> <p>Chivas Regal 12yr \$49.99 Chivas Regal 15yr \$74.99 Chivas Regal 20yr \$89.99</p>	<p>\$22.99 EACH</p> <p>Somersby 12pk bottle range</p>	<p>Not Stocked</p> <p>Monteiths Batch Brewed (ex classics range) 12pk range</p>	<p>\$24.99 EACH</p> <p>Carlsberg 15pk bottles</p>
<p>\$24.99 EACH</p> <p>Heineken 12pk bottles</p>						
<p>\$25.99 EACH</p> <p>Export 33 15pk bottles</p>	<p>\$26.99 EACH</p> <p>Tui/Export Gold/ Extra / DB Draught 15pk bottles</p>	<p>Not Stocked</p> <p>Haagen 24pk bottles</p>	<p>\$36.99 EACH</p> <p>Lion Red / Waikato / Speights / Summit or Low Carb 24pk bottles</p>	<p>\$39.99 EACH</p> <p>Steinlager 24pk 330ml bottles</p>	<p>Not Stocked</p> <p>Tiger / Tiger Crystal 12pk bottles</p>	<p>\$40.99 Not Stocked</p> <p>Asahi 24pk bottles</p>

Promotion period between 1/04/2021 to 30/04/2021. While stocks last. Promotion only available at participating stores. Please contact your local store to confirm whether they are participating in the promotion and check the pricing in-store prior to purchase. Online pricing will vary.



JOIN US FOR OUR
EASTER EGG
-STRAYAGANZA

HUNT!



Find the Easter Eggs hidden on the Thirsty Liquor website, click on the egg to enter and
WIN EGG-CEPTIONAL PRIZES
VISIT: THIRSTYLIQUOR.CO.NZ

COMPETITION RUNS 2ND APRIL TO 30TH APRIL 2021



Tuatapere Rate Rises are 18-19% for most!

Myles Greber

Residents of Tuatapere, your rates are predicted to go up by 18-19%, a small number are looking at closer to a 30% rate rise.

For most, this equates to an increase of \$480 (give or take a few dollars). The Chair of the Te WaeWae Community Board and our local Southland District Council Councillor, when asked about this, could not or would not comment on the reason for it or why the residents of Tuatapere have not been informed.

If you want to check your predicted rate rise, go to the following link and look for the Rate Search section and follow the link provided - you simply need to type in your full address.

<https://www.makeitstick.nz/ltp>

If you don't have internet access, I am happy to look up your Predicted Rates for you and provide them to you over the phone. Contact me on **020 4002 1498** - all you need to provide is your address. **Note that almost everyone is looking at a \$480 increase.**

There are two drop-in sessions planned for Tuatapere to discuss the Southland District Council Long Term Plan, which appears to be the only avenue to discuss this very significant rate rise for Tuatapere Residents. Details are as follows:

Thursday 8 April

- Jack and Mattie Bennett Park 3pm to 4.30pm (I hope it's not raining!)
- Tui Base Camp 5pm to 6.30pm

I suggest those concerned turn up to one of these sessions, contact their local council representatives or post a comment/question via the link provided above (see the sections **Have your Say** and **Ask a Question**).

I have asked for details, but have not yet received a response.

MOUNTAINS EDGE CABINS MONOWAI



Hunting, Fishing, Mountain Biking,
Kayaking & Tramping
Cabin Accommodation

12 Cabins
Double and Single Available
\$35.00 per person per night

Eftpos available
Full Kitchen Facilities, Showers, Toilets, Playground
& the Tennis Courts right across the road!

We are 'pet friendly'

www.mountainedgecabins.com
Email: mountainedgecabins@gmail.com

75 Turbine Drive, Monowai. Ph. 03 225 8267



HARRY'S MACHINES EARTHWORKS

027 304 3714





* 13 Tonne Digger * 5.5 Tonne Digger * 2.7 Tonne Digger- dry hire or operated
* Tip Truck * Bob Cat * Augers * Post Driver * Tree Saw & Hedge Trimmer

* Tree Trimming * Post Driving * Fencing * Cleaning of Wintering Sheds * Site
Clearance * Cartage * Graveling * Lane Maintenance * General Earthworks

For all enquiries and bookings please contact Lance or Alice Harris
Lance: 027 304 3714
Alice: 027 270 0363
Email: lanceharris533@gmail.com
Check us out on facebook- Harry's Machines

WAIAU VALLEY SHEARING LTD



Simon de Vries
Julie Heaps
027 840 9867
03 226 6212



RAW FARM HOMEKILL

It's time for the Roar! Duck Shooting Season is just around the corner too!

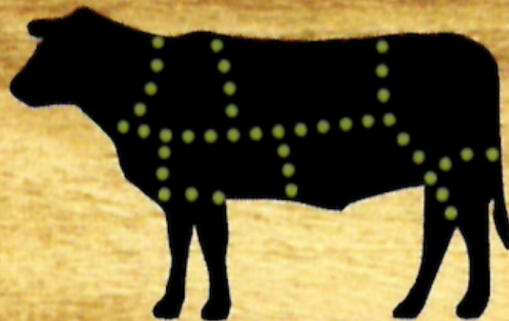


We are ready to process your recreational-hunted game!



Wayne & Rachel Saunders
Qualified Butcher
rawfarming@yahoo.co.nz

027 457 6350
82 Clifden Highway
Tuatapere



Cut up the way you want

Beef

Pork

Sheep

Venison

Other game meats

Traditional Smallgoods

Ratty Says ...

Waiau Memorial Library

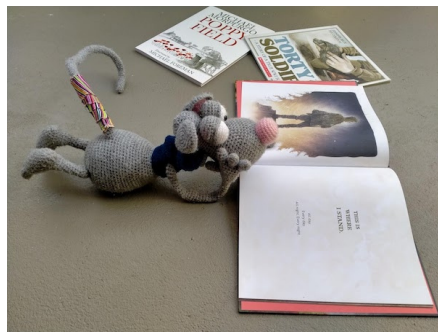


Hello! I've been a very busy rat. The librarians have been buying new books and I've been reading them. I've read fiction and non fiction books, picture books and chapter books, books about doing gross experiments and books about sharks. I've been on so many adventures.

The librarians also bought some books about WW1, to commemorate ANZAC Day. There are three of them, "Torty and the Soldier", "Where I Stand" and "Poppy Field". I've read all three of them. They were a bit sad but they were also very interesting. Two of the books are true stories. Poppy Field is about how the poppy became a symbol of remembrance and why the poem "In Flanders Fields" was written. Did you know that there's a purple poppy? It's for all of the animals that have died in war.

The Library 'plants' poppies out front especially for ANZAC Day.

I'm going to help this year to remember Flanders Field and because I love poppies.



PROPERTIES WANTED!

Contemplating selling? You might be surprised by what your property could fetch on today's market

Contact Julie today for a free appraisal and to discuss how you could take advantage of this bouyant property market



Julie Guise

021 256 4164

julieguise@sre.co.nz

SOUTHLAND REAL ESTATE LTD
Licensed under The Real Estate Agents Act 2008

MREINZ

SOUTHLAND REAL ESTATE LTD

Licensed under The Real Estate Agents Act 2008

MREINZ

accelerate
PHYSIOTHERAPY



Lindsay Stephenson
Dip Phty, Dip MT, Reg Acup, P3 Dip Rehab, MNZCP (pain management)



Andrea Murray
Dip Phty, Dip MT



Alana Makolm
BPhty, BPtEd, Reg Pilates Instructor, PGCert (acup), Reg Acup

See the friendly team for help with...

- Back and neck rehabilitation
- Sports injuries
- Dizziness
- Chronic pain
- Occupational health
- PING/Steel Pilates for cancer survivors
- Breathing disorders
- Exercise programmes

Invercargill clinic open late nights

ACC available

Weekly satellite clinics in Tuatapere and Ohai

accelerate
PHYSIOTHERAPY

60 Deveron Street, Invercargill
P 218 6583 F 218 4105
E office@acceleratephysio.co.nz
www.acceleratephysio.co.nz

CANTERBURY CARS
4WD Specialists

For all your vehicle requirements

Cars, utes, 4WDs, vans

Finance available

Contact: Murray Dowling
027 556 2655

Visit our website
www.canterburycars4x4.co.nz

Specialising in
Dairy Conversions
Rural Fencing
Post & Rail

H Gill Fencing,
Eastern Bush

Phone 021 225 5489

After Hours 03 225 5488

Email hamish@hgillfencing.co.nz



FCANZ
Fencing Contractors Association NZ
Member



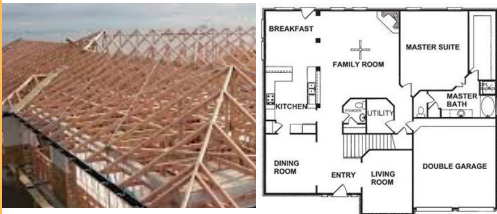
Agricultural Contractors servicing Western Southland and beyond.

BALAGE - SILAGE - GROUNDWORK - FEED TRADING
Nigel 021 226 6156 / fowlecontracting@gmail.com

PAUL ANDERSON BUILDER

AVAILABLE FOR ALL YOUR
BUILDING REQUIREMENTS.

NO JOB TOO SMALL.
COMPETITIVE RATES.
REFERENCES AVAILABLE!



Mobile: 027 890 3602
thetakis@outlook.com

Painting & Handyman Services

Experienced Painter

I can help with all sorts of odd jobs too!

Gardening
Lawn mowing
Tree & Hedge Trimming
General labouring



Phone **Luke Wikstrom 027 2773 925**

For all your Accounting and Tax Solutions

Ask for Janice or Trevor England

 **03 2266110**

Aparima Accounting Ltd
57 Main Road Tuatapere



C: 0274 247 102

T: 03 225 8652

E: admin@drakeplumbing.co.nz

KIERAN DRAKE
Certifying Plumber
& Drainlayer



MR STEEL

TUATAPERE

PH: 027 276 6816

MALCOLM

For all your engineering,
steel fabrication and repair needs!

Walking the Humpridge Track??

Book 1 night before and get
1 night **FREE** after you walk
the track



"The Cliffs"
Sea Side Lodge Motels

**03 226 6066 or
027 390 3117**



CONTACT US TODAY

Phone 03 221 7192

Fax 03 221 7194



- Excavators for general farmwork
- Laser guided drainage
- Gorse mulching & land clearing
- Lane maintenance
- Conversions
- Effluent Ponds
- Demolition
- 20 tonne bulldozer, roller, grader
- Drain ploughing & alkathene laying

Bucket Honey Cafe

We have

- HONEY
- Great Coffee
- Homemade Pies
- Juice Bar
- Sandwich Bar
- Homemade Icecream

Come in and try our honey!

Phone: 022 0887 993

16 Orawia Road, Tuatapere





We specialise in:

Resource consents

Farm environmental plans

Policy advice

DOC concessions

Landscape plans & assessment

We take care of the paperwork,
so you can do what you do best!

Sonya: 027 5050 077

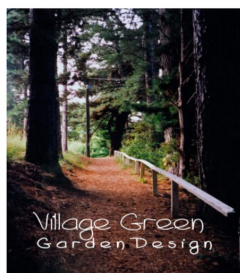
Landscape Garden Design

What do you want
from your garden?

Whether building new or
revamping your existing garden
an overall plan is essential.

Free Initial Site Visit

From a few questions to get
you started, to a full landscape design.



Village Green
Garden Design
Tuatapere

Ph Robert
027 9241 204

ESSENTIAL OILS

100% PURE GIFTS OF NATURE

Florals Trees Plants Herbs Spices Citrus

To learn more

phone your local
Wellness Advocate

Carol Erskine 027 459 9654



PLEASE HAVE YOUR ARTICLES,
NOTICES, OR UPDATED ADVERTS FOR
THE WESTERN WANDERER SENT IN BY

20th of APRIL
(for May's Issue)

TUATAPERE OUTDOORS & HARDWARE

For all your

Gardening tools, lawn care, garden
hoses, insect and disease sprays, potting
and compost.

We have those building requirements for
that weekend job with a good selection of
silicone, nails, screws and bolts.

New fishing rods and reels, fishing lures,
good selection of soft bait,
fishing nets, flounder and eel nets.



Good selection
of giftware.

Come in, check out
what we have.

Contact:

Judy 027 225 8192

Paul 027 890 3602

Shop (03) 226 6363



MATHIESON

ELECTRICAL LTD

ETHAN MATHIESON

M 027 634 7534 A/H 03 225 8891

E mathiesonelectrical@vodafone.co.nz

- Domestic
- Commercial
- Dairy
- Pumping & Effluent
- Heat Pump Installation
- Heat Pump Servicing

INTRODUCING

STREBEL STRIP TILLER WITH A KUHN 6 ROW BEET PLANTER COMBINED FRONT FERT HOPPER



STRIP TILLER BENEFITS:

ONE PASS - SAVING YOU MONEY

LESS CULTIVATION = LESS BUGGING

KUHN BEET PLANTER IS ABLE TO SOW SWEDE & BEET



FOR MORE INFO OR TO BOOK PH:

Kahu - 027 5183 448



Kia ora Western Wanderer Readers!

WAS students are certainly enjoying their **wonderful school environment** and the many things that are on offer. With swimming, athletics, extension groups - (eg music, art, science), technology, trips, visitors and EOTC - just to identify a few areas - there is plenty happening.



Pictures: Peyton Tilby and Sophie Lima along with Boston Dunn, Mitchell Hammond and Sophie Anderson enjoying library/makerspace time. Our two **wonderful Teacher Aides**; Robyn Stanning and Mel Templeton working with Sophie Ward and Taelah Tilby. Robyn and Mel work with many teachers, students and groups of students throughout the week - WAS is very fortunate having their experience and expertise on hand.



The **gym is in upgrade mode** - the front is being lifted to match the rest of the gym roof. It is also getting painted and quite a few weatherboards are being replaced due to leaks over the years.



Quite a few people have been asking about all our renovations and exciting learning initiatives we have on offer at WAS. Please feel free to text me or ring the school office for a tour around. When all the building upgrades have been completed, we will have an **open night to showcase our amazing facilities**.

Our **Area Schools Sports Exchange is in Roxburgh** next term. Our Year 8+ students are gearing themselves up for this. Plenty of excitement is generated from this event - students look forward to competing and catching up with other Area School friends.

A group of 20 students are heading off to Manapouri **to plant trees** on behalf of Meridian Energy. WAS works closely with Meridian and we are very fortunate to have this partnership - Meridian are very kind to WAS and help us out a lot, especially with providing opportunities like this.

WAS has been very fortunate in receiving a few more **professional learning opportunities** this year. As a result, a large number of resources (for example - latest Ministry funded high interest reading books) for our Junior classes are arriving as well as resources for teachers. Also, we're being supported with trialling a new **Assessment tool** for staff which will assist with planning for next steps of learning and identifying the support and resourcing around accelerating learning.



WAS students are wearing their new uniform with pride. **Jasmin Hutchby**, Year 11 (Fifth form), is looking fabulous wearing her senior school uniform. We are very proud of all our students.

**Nga mihi, take care and keep safe.
Andrew PB**

For Landscaping, Lane Maintenance, Gravel Supply & Cartage

GRADES OF CRUSHED & SCREENED GRAVELS, ALKATHENE LAYING, ROOTRAKING, FARM TRACKS, DAIRY LANES



**K J SUTHERLAND
GRAVELLING & AGRICULTURAL CONTRACTOR
2475 OHAI-CLIFDEN H/WAY
ORAWIA R.D2 OTAUTAU 9682
Ph 0274 367 934**

ELEVATOR SCRAPER, BOBCAT & ATTACHMENTS, LANDSCAPING, TRENCHING AUGERS

Supplies of Gravel Ex Waiau River

River Run Screened Grades Concrete Gravel Pea Gravel
Rejects for soak holes Crushed - AP30 and AP65

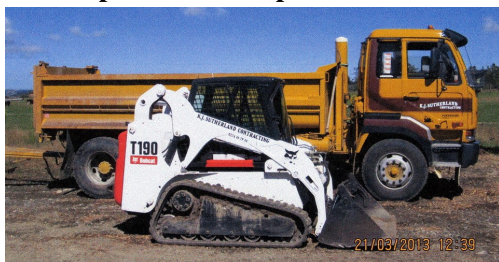
Peebles for Sheep and Cattle yards and calf sheds
Fines suitable for cow lane capping

K.J. Sutherland Contracting Bobcat T190

**With attachments: Landscape Rake,
Augers and Trencher**

**Suitable for all landscaping, shed and yard
maintenance**

Muck-spreader and tip trailer available



**PHONE KEVIN
027 367 934 / (03) 225 5716**

INDEPENDENT MIDWIFE

ISOBEL DEVERY

*Caring for women throughout
Pregnancy, Birth till six weeks
Post Natal.*

*Choices for place of birth,
Home or Winton Birthing Units
or Kew Hospital.*

*Free pregnancy tests
available on request.*

**Phone: (03) 22668822
027 2267020**

©Peccaro, EthnoGraphics®

WAIAU HEALTH TRUST – APRIL 2021

Medical Centre

The time is approaching for our region to begin the Covid Vaccination programme. We will update you all as we receive any information around this timeframe. Vaccinations for Covid-19 are free to everyone in New Zealand.

Flu Vaccines 2021

We will have access to the over 65 vaccines from mid- April, however we do not have a date yet for the other vaccine. We will be holding a flu clinic on Friday the 16th April **FOR INDIVIDUALS AGED 65 AND OVER ONLY**. The clinic will be 9.00am – 4.00 pm and our waiting room for this will be in the day activities room, down the maternity hospital end of the building. We will inform the public when we have access to flu vaccines for the rest of the community. Unsubsidised vaccines are \$35.00.

Liquid Nitrogen Clinic is on 29th April – please phone and make an appointment.

GP Availability

Telehealth Consults are available during some days in April with GP Yan Wong, if you would like to know more about this option please contact our friendly receptionists or myself. Yan has practised here recently and to those who had the pleasure of meeting him I am sure you will agree he is a very friendly, caring and an approachable practitioner. We are very well set up with computer compatible equipment. The GP can hear/see most things you would in a face to face consult. Your appointment will take place at the Medical Centre with a Registered Nurse sitting in the appointment with you. Telehealth consults are already successfully happening all over NZ, this is to allow more accessible consults with a vast range of Medical Professionals.

Maternity Support Services

We are now holding weekly coffee groups every Thursday currently running between 1.00 pm -3.00 pm. We are endeavouring to have speakers on a regular basis to benefit the learning of new Mums. Should you have a suggestion of a speaker please contact me.

Kind Regards
Jo Sanford (Manager)
Cell: 0272950429



Waiau Health Trust
69a Orawia Road, Tuatapere
Approved Registered ACC Provider
Monday to Friday
8:30am – 4:30pm
Ph.: 2266123

Practitioner Hours
Amanda McCracken (NP) – every
weekday

Sheryl Eden (NP –every Monday &
Tuesday

Liz Scott (GP)
2nd Tuesday of every month

Physiotherapist
Tuesdays & Thursdays
Phone for an appointment

Podiatrist
Visits regularly –
Phone for an appointment

Warts/Minor Skin Lesions
Liquid Nitrogen treatment available
Phone for an appointment

Homebased Maternity Care
We are offering this service in the
patient's home. Please contact Jo
Sanford on 2266123 for enquiries.

Day Activities Programme for
the Elderly
Every Tuesday & Wednesday
Please phone for further information.

District Nursing
Available as required by referral

Welcome to the April Edition of
"What's Been Happening?" at....



Kia ora Western Wanderer whanau



confident



connected



learners



Kia ora, Namaraskan, Bula

Welcome to Noah and William who have joined Hauroko Valley Primary School. Kowhai class are excited to have you along with your siblings - Niza and Jack.

Several of our Year 7&8 students competed in the Southland Secondary Schools Triathlon in the individual and team events. Well done to our individual competitors - Harry, Jack and Hunter and team members Ewan & Baxter. Congratulations to our Year 7 girls team of Addi, Lily E and Sophie, who impressed with 3rd place.

We held our Young Farmers day providing all students with challenges including connecting hoses to provide water, identifying what to fix on a motorbike, classifying weeds, putting a beehive together, ordering sheep wool, explaining what tools are and their use. So many opportunities to work together as a team and problem solve tasks involved in agricultural activities. Thanks to Jason & Kaylene Bennett and Jen Templeton for organising such a fun event for our tamariki. We appreciate our parent helpers and thank Andrew Lord, Uli Sirch, Farmlands Otautau, Otautau Veterinarians and Southland Honda for giving of their time and contributions to our special day.

Our students have trained to compete in run, jump and throw activities as part of our inter school athletics with Waiau Area School. We appreciated WAS providing fabulous facilities for our combined challenge. Our families enjoy opportunities to be together as a community supporting our tamariki. Thirty-eight track and field qualifiers headed to Takitimu Primary School for our Western Southland Athletics competition. Thanks to Takitimu School for terrific organisation for our Western Southland Cluster. Congratulations to track qualifiers - Flynn - 60m & 100m, Lily C - 100m & 200m, Hugo - 200m, Hunter - 100m & 200m, Lily E - 800m and Cormac - 1500m. Also to our field qualifiers - Tomas - long jump, Elly - discus, Erin - discus and Finn - long jump, high jump and nerf. The following students are also representing Western Southland in relay teams - Sienna, Lily C, Erin and Hunter. Good luck to each athlete for the Southland Primary Athletics Sports to be held on Saturday 27th March at Surrey Park, Invercargill.

The Blackmount Trail Ride was an E P I C day - thanks to our Home and School for making this a terrific day out for families and friends. THANK YOU to our sponsors for supporting Hauroko Valley Primary as we provide opportunities for our tamariki. Thanks to our school community for assisting in making this a successful and extremely enjoyable event. Until next time - Julia Waikato, Tumuaki/Principal



Term 1, 2021 Events

March - Western Athletics, Southland Athletics, Year 7&8 Technology, Golf, Discovery Time, HVP Clubs

April - Discovery Time, HVP Clubs, Year 7&8 Technology, Teachers Only Day - Thursday 8th April.

Term 1 Finishes - Friday 16th April

Term 2 Starts - Monday 3rd May

Always Our Best



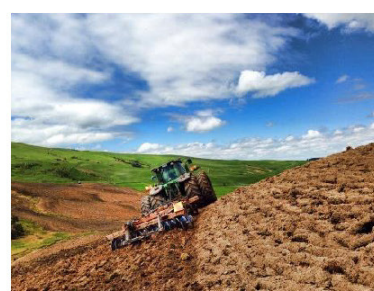
Rabco Ag Ltd – 021 362 766 – admin@rabco.nz
Agricultural Contracting Specialists - Western Southland



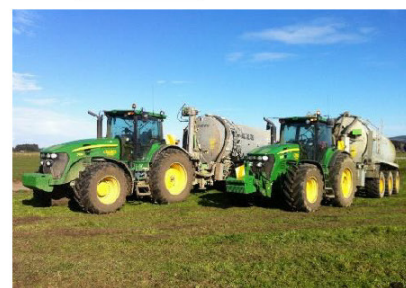
**Full silage
& baling
service**



Cultivation – including Direct Drill & Precision Drill



Effluent – Excavators - Hedgetrimming



Alex Reid CONTRACTING

**Paddock Cultivation from
Ploughing to Sowing Dry Hire
available Aerating Direct
Drilling Ridging Mulching**



Dairy Lane Maintenance

Tip Trailers • Vibrating Roller • Effluent Services

Sheep Conveyor

Drenching, Vaccination etc • 3 way draft



Rural Contractors
NEW ZEALAND

Large Skid Steer for calf shed cleaning, loading Muck Spreaders etc

4 Muck Spreaders • 16,000 litre Slurry Tanker
• Pond Stirrer • Umbilical Slurry System

**PH ALEX 0212775308 CELL
03 2255377 HOME**

WaterForce

**Irrigation Systems
Pumping & Filtration
Effluent Dispersal
Water Management**

20 Winton Hedgehope Highway, Winton
03 236 9805 www.waterforce.co.nz
0800 4 FORCE (4 36723)

WESTERN ELECTRICAL

2008 LTD

Electrical Solutions

Domestic | Industrial | Commercial

Quality Service at Competitive Prices

- New Builds, Rewiring & Alterations
- Dairy Shed, Farm & Industrial Maintenance
- Hotwater Element Replacement
- A/H Call Out Service Provided



**Ph 03 225 8974 / 027 439 3787
Fax 03 225 8973**



Jacqui and Superior go the extra mile

Are you frustrated with the lack of service from your local fertiliser consultant, peddling the same advice year after year regardless of your production outcomes, environment and sustainability?

Give **Jacqui Chamberlain** of Superior Fertiliser Specialists a call. She will bring whole new meaning to service and client/advisor relationships.

Jacqui is a key member of the highly skilled Superior team totally committed to helping you develop healthier, more productive soils and plants.

We form a specialist fertiliser company that provides high quality advice and products at competitive prices. We have been doing this for South Island farmers and growers for just on 20 years.

Superior promotes a total soil care package. First, we get to understand the make-up, nutrient status and health of your soils, the demands you are going to place on them, and your production goals – before we apply one kilogram of fertiliser.

A comprehensive regime of vigorous soil tests will be undertaken and the results will provide the basis of a Superior Fertiliser Management Plan customised for your unique situation. This will complement your farm's Environmental Plan and provide the blueprint for an ongoing annual fertiliser programme.

We then supply guaranteed-quality solid fertiliser for your pasture and crops, monitor production and other outcomes, and update your Plans as required.



It's free to talk so don't hesitate to give Jacqui a call.
Phone 027 202 0611

Jacqui Chamberlain
Fertiliser Advisor Southland
027 202 0611
jacqui@superior.net.nz



 FERTILISER SPECIALISTS
SUPERIOR
www.superior.net.nz

**TUATAPERE SERVICE STATION
20 ORAWIA ROAD
PHONE: 03 2266475**

HUNTERS

**WE HAVE A GOOD SUPPLY OF
CENTREFIRE AMMO FOR THE ROAR
COME IN AND HAVE A BROWSE**

For all your mechanical needs



**Car & 4WD WOF's
Trailer & Caravan WOF's
Motorbike WOF's
Servicing all vehicles
Light Engineering
New Tyres
Electrical Work
Scanning of most vehicles**

HARDWARE IN STOCK

**Nails, screws, tec screws, bolts and nuts, dyna bolts, pulleys,
karabiners, hinges, padlocks, rope, chain and much more**

