



WESTERN Wanderer

Colac Bay | Orepuki | Tuatapere | Clifden | Orawia | Blackmount | Monowai

Photo Credit: Waiau Sunset - Yvonne Nimmo



A FUNDRAISER FOR
HAUROKO VALLEY
PRIMARY SCHOOL

Based at Belmont Station - Blackmount - Every ability catered for on 60km+ of track!

Registration opens 8am - first ride 9am - Lunch included in registration.

3pm The David Gray Memorial Hill Climb - Food and refreshments available all day (cash).

email blackmounttrailride@gmail.com - FB @blackmounttrailride www.myrides.co.nz

ADULT \$60
UNDER 15's \$40
MINI - \$15
FAMILY (1 ADULT + 2 UNDER 15'S) \$100
SIDE X SIDE OR ATV PASSENGER \$30

**BIG GRINS
GUARANTEED**

Massive thank you to our sponsors:



GWD Motor Group



HANDY PHONE NUMBERS

EMERGENCY
POLICE /FIRE/AMBULANCE: 111



MEDICAL CENTRE: (03) 2266 123

TUATAPERE COMMUNITY WORKER:
027 757 5983

HAUROKO VALLEY SCHOOL OFFICE:
(03) 2266 753

WAIU AREA SCHOOL OFFICE:
(03) 2266 285

TUATAPERE CEMETERY TRUST:
(03) 2266 065

CHAMBERS SERVICE STATION:
(03) 2266 654

TUATAPERE SERVICE STATION:
(03) 2266 475

TUATAPERE FOUR SQUARE:
(03) 2266 898

TUATAPERE OUTDOORS & HARDWARE:
(03) 2266 363

Special thanks to



WAIU AREA SCHOOL
Year 1-13 Education

Live to LEARN, LEARN to Live

for their support with the printing

Is it Time to Get Your Chimney Cleaned?

Tuatapere Volunteer Fire Brigade

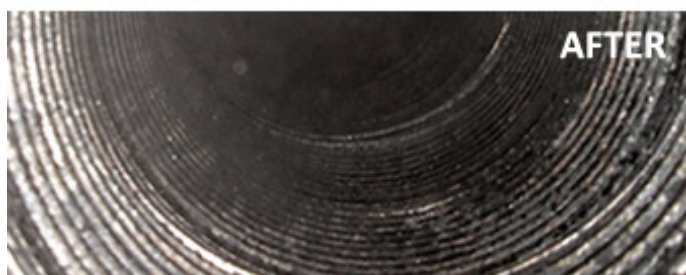
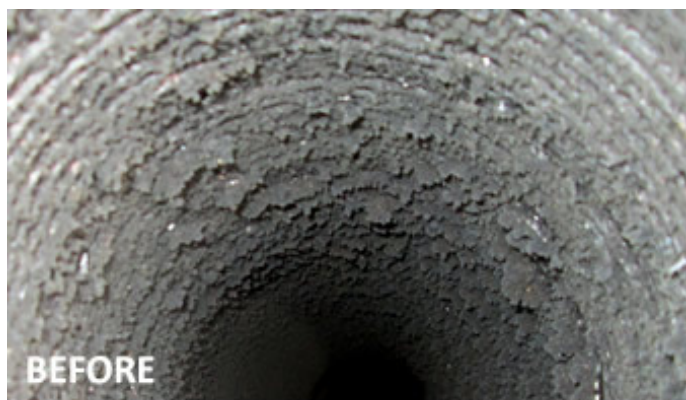
As part of our fire prevention strategy, the Tuatapere Volunteer Fire Brigade is helping to coordinate a chimney sweeping company to visit the town before the colder winter months set in.

Trev, from Popham Chimney Sweeping, will be in Tuatapere around the end of March/start of April and is keen to book in as many clients as possible so everyone benefits from the reduced cost of travel - as well as reducing our carbon footprint!

A clean chimney not only reduces the risk of chimney fires and toxic fumes, it also makes your fire or log burner more efficient, which results in more heat output and less firewood being used.

If you would like to take advantage of this opportunity and get a clean, safe chimney for approximately \$65-\$80 (depending on type of burner), then please get in touch via the TVFB facebook page, contact any member of the local fire brigade or call/email Trev Popham directly.

Popham Chimney Sweeping
Work: 03 2174740
Cell: 0272115249
Email: hotsweep@xtra.co.nz



COMMUNITY NOTICES & EVENTS

**Postnatal depression (PND)
can happen to anyone.**

We would like to give you the opportunity to learn more about PND.

It might not apply to you but you could be able to help you wife, daughter, neighbour or girlfriend just by learning a bit more about it and being able to recognize the symptoms.

Kristyn from PND Southland is coming to Tuatapere to speak to us and raise awareness about postnatal/postpartum depression.

Saturday 27th of March
10.00am - 11.30am

at the dayroom in the medical centre.

This talk is supported by
Waiau

Health Trust
and the
Tuatapere
Toy Library



**PLEASE HAVE YOUR ARTICLES,
NOTICES, OR UPDATED ADVERTS FOR
THE WESTERN WANDERER SENT IN BY**

**20th of MARCH
(for April's Issue)**

SEND TO:
yourwesternwanderer@gmail.com



We aim to have each issue printed and delivered the first week of each month.

Event Sign Volunteer Coordinator

The Tuatapere & Districts Promotions Inc
is looking for someone to
coordinate/run the new Event Sign.
(next to Tuatapere Service Station)
For more details please contact

Contact: Paula McKenzie 027 434 6777



**Tui Town
Community**



Garage Sale / Car Boot Sale

Perfect opportunity to get rid of those unwanted items & earn some extra \$\$

**Sunday 14 March
10am - 2pm**

Put a balloon out on
your letterbox to show
you're having
a garage sale!



**Don't want to have a garage sale
at your house?**

Bring your car down to the
**car park area opposite the
Church/RSA Hall on
Main Road** and have a
car boot sale instead!

We want to hear from YOU!



Do you have an idea for
content in the Western Wanderer?
Is there something you'd like to
see or read about in the
Western Wanderer each month?

We are always on the lookout for
new contributions - it doesn't have
to be every month (but it can be!)

Email us at
yourwesternwanderer@gmail.com
OR
drop us a note in the letterbox
outside the Toy Library
(18 Orawia Rd, Tuatapere)

Are you a Graphic Designer?

Or have some graphic design skills?

Tuatapere & Districts Promotions Inc
is keen to talk to you!

Please call Paula McKenzie **027 434 6777**

Rural Women Scone Baking Day

2 February 2021

Ratty teamed up with Rural Women to help them with the Scone Baking Day.

He just loved to get stuck in and be part of it. Later he made some on his own at home just like the children and entered them in the Waiau Show. He made his red. Did you see them entered at the show?

Let's see how it went.



THANK YOU From the Waiau Show Committee

A huge thank you to all our sponsors listed below,
to all the judges, stewards, competitors, helpers,
stall holders, trade space and all the wonderful people
who came to support the show.

To the Domain Board members for their tireless work
keeping the show grounds so beautiful. We are so grateful.
Thank you so much.

WAIU HEREFORD STUD

FOWLE CONTRACTING
UBER HORSE
MERIDIAN
ASB BANK
BIRCHWOOD HUNT CLUB
DIACKS NURSERY
ILT
P&N BAKER
PGG WRIGHTSON
KJ SUTHERLAND
CONTRACTING
OTAUTAU VETS
PHILLIPS CONTRACTING
RABCO AG LTD
TUATAPERE FOUR SQUARE
WESTERN FENCING

PIKOBURN ANGUS STUD

ALEX & VICKI REID
CONTRACTING
SADDLERY WAREHOUSE
DT KING TRANSPORT LTD
ALLIANCE
CRV/AMBREED
FMG
NICOLS GREENWORLD
ROAR VELVET LIMITED
RANNOCHMOORE FARM
MALLOCH MCCLEAN
ACCOUNTANTS
OTAUTAU TRACTORS
ROYAL AGRICULTURAL
SOCIETY

TUATAPERE AMENITIES TRUST

2021 funding applications now open!

Application forms are available now and these may be collected from

- Tuatapere Service Station
- Chambers Garage
- Tuatapere Outdoors and Hardware

Completed application forms need to be submitted by **30th April 2021**.

The Trust wish to remind applicants that funding for wages, administration and operational costs or retrospective funding will not be granted.

TUATAPERE MEMORIAL BURSARY TRUST

Applications are open!

Forms will be available for pick up from the local health and gift shop or by contacting

John Munro on **027 412 2925** until **March 30, 2021** when applications close.

SENIOR CITIZENS

Senior Citizens is a group of over 60s that meet every **Friday afternoon at 1pm** at the rooms behind the RSA Hall. We are always looking for new members so if you would like a fun afternoon playing bowls, cards or just catching up with friends, come and join the group.
Contact: Olive Bennett Ph **(03) 2266 477**

WAI AU VALLEY PRESBYTERIAN CHURCH

Services for all ages! Every Sunday at 10.30am.
Tuatapere Presbyterian Church, Main Street, Tuatapere.
All welcome to join us. For information please contact:
Chris Howden Session Clerk 021 477 999

WESTERN SOUTHLAND WOOLCRAFT GROUP

Spinning, Felt, Weaving, Knitting, Crochet.
Other crafts welcome!
1st Wednesday of the month. 10am - 3pm. BYO Lunch.
For details please contact: **Helen Todd 022 378 9743**

NEED A JP?



The following Justices are available by appointment:

Tuatapere

Keri Potter 027 526 3137
Donald Egerton 027 432 5407

Te Waewae Bay

Shirley Whyte 027 504 5220

Blackmount

Nicky Baker 0276435880

TUATAPERE & DISTRICTS LIONS CLUB PROJECT



SUPER DIRT

Super dirt bags are now weighed so more in each bag!
\$8 per bag - ready for your garden!

Super dirt can be collected from:
Cracks Yard, Grove Burn Road,
in the mornings Monday to Friday.
Weekends by arrangement.

Delivery by arrangement - (but not guaranteed)

Phone Trevor (03) 225 5864 or
Stephen (03) 226 6817



TUATAPERE COMMUNITY WORKER

Room 5 Medical Centre
69A Orawia Road

Monday - Thursday 10am to 3pm

Keri Potter **027 757 5983**

Email: tcworker@xtra.co.nz



WAIAPU MEMORIAL LIBRARY

Library Hours: Fridays

10:00am - 11:30am

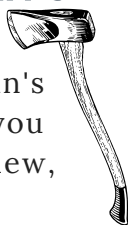
2:30pm - 4:00pm

7:00pm - 8:00pm



The Library now has Wi-Fi. Available free to all library members. Just ask one of our friendly volunteers to help you set up your device.

TUATAPERE BUSHMAN'S MUSEUM



Orawia Road. If the Bushman's Museum is not open when you have visitors who wish to view, you can contact:
Lindsay Faulkner (03) 226 6650 to arrange a suitable time.

TUATAPERE ENVELOPES

Envelopes printed with the "Tuatapere on Nature's Edge" Logo can be purchased at Country Corner Craft Shop
1A Orawia Road
Cost \$3.00 per 10



TUATAPERE MAINLY MUSIC

A pre-school music and movement-based playgroup.

Mondays during the school term at the Tuatapere Presbyterian Church Hall.

Music session starts at 10am followed by a time of morning tea and play. \$2 per family.

Morning tea is provided for all.

New families welcome!

Find us on Facebook:

"Tuatapere Mainly Music"



mainly music

For more information contact Heidi 022 315 3326

Get your car washed, dried and windows cleaned - Price arranged on request!

Contact: Rex Hibbs
Flat 1/26 Orawia Rd, Tuatapere

COMMUNITY NOTICEBOARD

TUATAPERE PRESBYTERIAN CHURCH MARKET DAY

The church market is held at 10am every 3rd Saturday of the month in the Tuatapere Presbyterian Church Hall, Main Rd, Tuatapere.

Market Day:

Saturday 20th March 2021

(Next Market Day: 17 April 2021)

All welcome! Come along & enjoy the opportunity for a cuppa & a chat and have a browse at the local crafts available.

If you would like a table for hire please text:

Tim Vanderpijl 027 716 6478

TUATAPERE PLAYGROUP

23B Orawia Road. **Friday Playgroup 9am - 12pm**

All parents and children welcome!

Children's morning tea is a packed lunchbox from home at Playgroup (as opposed to a shared morning tea).

Any queries please contact:

Gemma Bennett 022 040 3368 Alice Harris 027 270 0363

CLIFDEN PLAYGROUP

45 Otahu Eastern Bush Road.

Every Wednesday (during School Term) 9:30am - 12:30pm.

All mothers and children welcome.

Bring packed lunchbox for your child's morning tea.

Any queries to: Lynley Patterson **027 429 7436**

TUATAPERE SCOUTS



Are you and your family looking for something that will foster personal development, create a sense of community and at the same time challenge you or a school age member of your family?

Have you thought of joining Scouts?

At Scouts we have a Wednesday Programme:

- Keas for children 5-7 yrs; 3:30-4:30pm
- Cubs for children 7-9½ yrs; 4:30-5:30pm
- Scouts for 9½-15 yrs. 5:30-7:00pm

We also have a need for leaders so we can deliver our programmes effectively. Please contact:

Leader Anne-Marie **027 688 5828**

5 Group Leader Quinton **027 223 4842** or **(03) 226 6969**

TUATAPERE TOY LIBRARY

Tuatapere Toy Library has been a toy swap/hire service provided to the young families of Tuatapere and surrounding since 1989.

The purpose is to create opportunities for the little people of our community to have accessibility to toys. A small contribution of an annual membership allows families to join the group and have access to the toys.

For more information or questions please text or ring Nathalie Pahl on **027 4759 075**



TUATAPERE & DISTRICTS MAP

We are updating the Tuatapere & District Map.

If you would like your business added to the map or require an alteration please contact :



Paula **027 4346 777** before **March 15th**.

TUATAPERE & DISTRICTS PROMOTIONS INC

We are always interested in hearing new ideas and seeing new faces. Everybody is welcome!

We meet at the Waiau Town & Country Club, 3rd Wednesday of the month at 7:30pm!

Contact Paula McKenzie **027 4346 777**

Our Next Meeting: Wednesday 17 March 2021

DO YOU HAVE SPARE TIME DURING THE DAY?

Would you like to have a cuppa, chat and play chess, checkers and/or dominoes.

If you are interested please contact Keri Potter **027 7575 983**

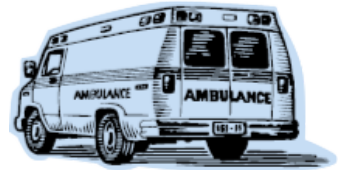
TUATAPERE AMBULANCE

Did YOU Know?

The Tuatapere Ambulance is a funded service by the Tuatapere Lions Club, for the residents of Tuatapere & Districts.

Should you receive an account for this service from St John, please forward it immediately to:

**The Treasurer
Tuatapere Lions Club
PO Box 47
Tuatapere**



Sometimes we experience difficulty in receiving the invoices for YOUR trip - so PLEASE do forward them on to us.

Thank you!

**Tuatapere Lions Club Charitable Trust
Ambulance Committee**

WESTERN SOUTHLAND HEALTH SHUTTLE

The Western Southland Health Shuttle Service travels from Otautau, Ohai, Nightcaps, Tuatapere, Riverton - covering all of Western Southland. We also connect with the Invercargill-Dunedin shuttle.

The Western Southland Health Shuttle operates Monday - Friday (excluding Public Holidays).

Bookings are required by 3pm the day prior to transport.

Ph: 0800 103 046 to book.

Please book as soon as you receive your appointment.

TUATAPERE VOLUNTEER FIRE BRIGADE

We're on the lookout for members to join this rewarding organization. We are looking for persons who are, ideally, available throughout the day.

If you think that you would like to try this (sometimes lifelong) commitment, then please feel free to come and try it!

We train on Tuesday nights at 7:30pm during daylight saving and 7pm through the winter months.

We look forward to meeting with you.



CLIFDEN HALL

The Clifden Hall Committee invites all ratepayers and interested community members to have a say on the future of the Clifden Hall. We want to hear from you if there is a desire from within the community to retain the hall into the future.

To share your thoughts come along to the hall on

10 March at 7pm

Any questions? Please contact Rebecca **027 424 6129**

CHAMBERS REPAIR SERVICE

Cheque withdrawal

With banks not accepting cheques by May 2021 and some business not accepting them now, we have decided to stop accepting cheques by 31st March 2021.

WAI AU SQUASH CLUB

Our season is fast approaching we would love to get some new "younger" members for the 2021 season.

Great way to get a bit of exercise over the winter months, have some fun and meet some new people.

Women interclub Tuesday evening.

Men's interclub Thursday evening.

For more info please contact:

Nic Mitchell **021 815 531** or

Sam Egerton **027 2505 477**



WAI AU STAR JUNIOR RUGBY

Grades: (ages as at Jan 1 2021) D Grade/Ripper – aged 5 to 7, C Grade – aged under 9, B Grade – aged under 11, A Grade – aged under 13

All players **must** register online at www.sporty.co.nz before Friday March 13th. Follow the links, find Wai au Star club.

Subs \$20

Club supplies mouthguard & playing jersey.

Boot exchange available. Players supply shorts and socks.

Practise C&D Grades Thursday 3.30-4.30 @ W.A.S. Start date TBC.

Practise for A&B Grades & start date TBC.

We need coaches and managers for these teams, and a canteen manager. Please contact Jeremy.

Thanks, any queries to Wai au Junior Convenor Jeremy Gray
027 225 5212 or 03 225 5212 or j.k.gray@xtra.co.nz
Information will be posted on Facebook @ Wai au Star Junior Rugby

SALVATION ARMY FAMILY STORE TRUCK

The Salvation Army Family Store Truck will come out and collect large amounts of your pre-loved furniture & other household items. This service is free.

Please call the store to organise your visit on **03 214 5380**



TUATAPERE HEALTH & GIFT SHOP - Riverton Pharmacy

We now have two courier drops for prescriptions for our Tuatapere customers:

1:00pm and 4:45pm.

The Health & Gift Shop is open from 12:30pm - 5:30pm.

If we can help in any other way, please contact

Riverton Pharmacy **(03) 234 8515**



COUNTRY CORNER CRAFTS

Come in and browse and see what we have to offer. Hats, scarves, children's knitwear, cards, jewellery, woodware, sewing, jams, pickles, sauces, etc.

Tuatapere souvenirs "On Natures Edge" logo are always available.

Is anyone interested in joining to sell their crafts? You are more than welcome to contact us.

Want to volunteer your time & work in the Craft Centre - let us know! It's a great way to meet people!

If you wish to view the shop and it is closed, please ring

Louise Greber (03) 668 6001 or

Lyla Sherriff (03) 226 6187

and they will open it for you.

The Great Tuatapere Rubber Duck Races

Nathalie Pahl, Organiser

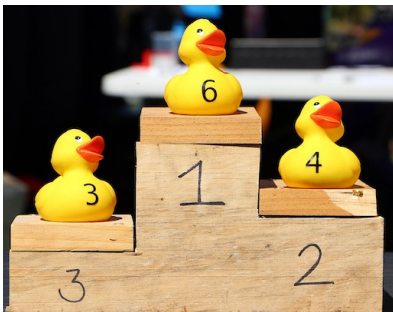
And how **GREAT** it was! I am very pleased to report it was a very successful event on a beautiful day. Everyone enjoyed themselves and some made a few dollars on the way. I have received a lot of positive feedback and many requests to make it an annual event. I have also been approached by several businesses wanting to be sponsors next time. It sure seems all the ducks are lining up for a second edition of The Great Tuatapere Rubber Duck Races.

The Great Tuatapere Rubber Duck Cup was won by **Eweno** sponsored by **Ricki Egerton Dagging** - congratulations once again to Bernadette and Ricki Egerton.

Best dressed was won by **Marjorie McDowell** and we had several lucky winners out of the second change draw. Altogether the Toy Library raised a fabulous \$2115.50!

A **HUGE** thank you must go out to all our sponsors who gave me the courage to run this event - and a **big massive shout out to the awesome people** who helped me make this event possible, you know who you are!

Event Photographer: Helen Hall, Harley Photography



Mackenzie Brown
SHEEP CONTRACTOR

Crutching
Tailing
Sheep
Conveyor

Sheep Conveyor

Drenching
Ear Tagging
Capsules
Vaccinating
Pour on
2 way draft

Mackenzie
027 9638318

SOLID
FURNISHINGS

JOHN TIMPANY Craftsman

022 046 1402
7 Settlement Road
Papatotara
Tuatapere, Southland

Furniture
Native Timber & Timeless Design
Signs Carved & Shapes Shaped
Small Structures Erected

TUATAPERE
HANDYMAN SERVICES

Barry Bennett
(03) 226 6730

- **Painting - Interior/Exterior**
- **Waterblasting**
- **Carpet & Upholstery Cleaning**
- **Spider & Fly Spraying**
- **General Repair Work**
- **Lawnmowing**
- **Hedge Trimming**
- **Weeding**

Riverton Electrical Ltd

The Bright **Green** Sparks
Industrial, Commercial, Residential
Member of Sustainable Electricity Assoc. of NZ Inc (SEANZ)

0274327215
Email: rivertonelectrical@gmail.com
Address: PO Box 10, Riverton 9847

Proud to support Western Southland - keeping it local!
Call today to discuss your energy needs for the home or business

Specialists in:
Renewable Energy
Energy audits
Energy management
Home ventilation
Heat Transfer
Dairy maintenance
Effluent systems (Electrical)
Preventative maintenance
Freeview TV



This salad is perfect for your summer barbecues.

BBQ Orzo Pasta Salad

Ingredients

Dressing

- 4 tablespoons olive oil
- Zest of 1 lemon
- 2 teaspoons wholegrain mustard
- 1 teaspoon honey
- 2 cloves of garlic
- 1 tablespoon finely chopped rosemary leaves



Salad

- 1 cup orzo/ risoni pasta
- 1 capsicum (red, yellow or orange) cored and cut into 2cm pieces
- 2 courgettes, sliced 1cm thick
- 1 bunch of asparagus spears or 150g green beans, trimmed
- 1 red onion, cut into 1cm pieces
- ½ cup chopped sundried tomatoes
- 2 tablespoons chopped capers (optional)
- 200g feta, crumbled

Method

Mix all dressing ingredients together.

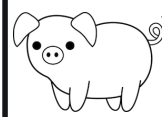
Bring a pot of well salted water to the boil.

Cook pasta in boiling water for 8-10 minutes or until dente. Drain and run under cold water.

Place capsicum, courgettes, asparagus/ beans, red onion in a large bowl. Toss with a generous glug of olive oil and seasons with salt and pepper.

Grill vegetables on the barbecue until soft (or roast in the oven for about 20 minutes). Allow to cool to room temperature.

Return grilled vegetables to a large bowl, along with cooked pasta, sundried tomatoes, capers, and feta. Toss with dressing. Season with salt and pepper.



PIGLET'S FOR SALE
PORKERS/BACONERS FOR SALE
READY NOW
PLEASE PH: (03) 2266577

WANTED TO BUY

Possum Fur, Hard deer,
Antler, Deer Velvet.
Phone Leith 027 496 3721

CHAINSAW SHARPENING

All chainsaw chain sizes precisely sharpened and rakers taken down accordingly, guaranteed results
Chain only \$10 Taken Off & Refitted \$13
Please phone (03) 2266940 evenings

Shirley Whyte

Your local realstate specialist living & working in Western Southland



for: Friendly service, reliability,
sound local knowledge in
Western Southland,
Te Anau & Stewart Island

Harcourts



M 027 504 5220 O 03 214 4080
E shirley@harcourtslnv.co.nz
W www.harcourts.co.nz

Sewing and Mending Services Available

Experienced machinist offering fast, reliable service with very reasonable rates.

I will mend/make anything from zip replacements to curtain making - just ask!

Free quotes and pick-up delivery service within Tuatapere.



Contact **Deborah**
(03) 226 6783 or 021 0305 667



GREAT FREIGHT RATES

Same Day
Door to Door
Monday - Friday

General Light
Freight Service
No Rural Surcharge



- Fresh & Chilled Freight
- Meat & Vegetables
- Flowers & Chocolate
- Bottled Milk
- Prescriptions
- Vet Supplies
- Ag. & Vehicle Parts
- Hardware
- Oil & Lube
- Ammo & Chemicals

Invercargill - Winton - Drummond - Otautau
- Tuatapere - Ohai/Nightcaps - Riverton

027 340 5845

bulletcourier8@gmail.com **bulletcourier.org**

Waiau Town & Country Club

**Evening meals (homemade goodness)
available Thurs, Fri, Sat & Sun
evenings from 3pm to 9pm.**

Kid's menu. | Happy to cater for dietary requirements.
Please pre-book for groups of 8 or more.

Club Opening Hours:

Mon - Thurs 4pm till close.

Fri 3pm – close.

Sat 12pm – close.

Sun 3pm – close.

Functions/Events/Meetings/Birthdays/
We can cater! Just call to book,
ask for Gary to discuss your options.

Upcoming Events:

***Sunday Funnies** - keep an eye on our facebook page for upcoming dates - Bouncy Castle & more.

*** Club Working Bee** – Sunday 14th March 10am
Firewood cutting, your help is appreciated.

*** St. Patrick's Weekend Celebrations**

Saturday 20th March

LIVE BAND = TRIPLE SHOT/9pm!

*** St. Patrick's Weekend Celebrations**

Sun 21st March - Potato in a bucket competition /
bouncy castle / chocolate wheel.

*** TUI X-FACTOR** - Saturday 28th March

Show us your talent, there will be prizes,
enter now!

*** BIRCHWOOD HUNT & HOUNDS**

6th-10th April

Dog Show 8th April & Band 10th April.

*** MEMBERS DRAW & RAFFLES**

drawn every Friday night! Approx. 7.30-8.30pm.

**Keep an eye on our Facebook Page for
more details on upcoming events**

Annual membership/subscription

Annual membership is \$50 or \$30 for pensioners.
Want to become a member, pop into the club & sign up!
Or email or call us.

Phone: 03 22 66 489

Address: 41 King St Tuatapere

Email: waiautcc@gmail.com

Facebook: facebook.com/waiautcc

Courtesy Van Available

We look forward to seeing you!

War Time Love and Loss

George Charlton

In memory of Squadron Leader Raymond Johnson Watson DFC who died in France March 5th, 1944 -serving his country of New Zealand in World War 2. Squadron Leader Ray Watson is on the Tuatapere Roll of Honour and his name and photo feature every year in the Tuatapere Memorial ANZAC service.

There are many sad stories of life and death during World War 2 and I would like to capture one before it is lost. Ray Watson was killed in 1944 when he was on a special operational flight to drop supplies to the French resistance. If he had returned he would have been my Uncle as he was engaged to my father's sister, Nancy.

I am quoting from a feature that was in the Southland Times in 2000 ...

"Ray Watson was a nice, fit Southland man. He was keen on rugby and just 27 years old when his plane crashed into a French mountainside on March 5th, 1944. Like many of New Zealand's fine young men Squadron Leader Raymond Johnstone Watson DFC (Distinguished Flying Cross) became a casualty of war. The special operational flight on the night of March 4th to drop supplies to the French Resistance took Ray forever from the Otahu Flat community he had lived in and from the lives of his family and friends. Although he has gone – Ray Watson- has not been forgotten by friends in New Zealand."

"He is also remembered in France by a nation mindful of the sacrifices made to help set them free. In a recent letter to the Southland Times Frenchman Claude Grimoud asked for help tracing Ray Watson's family. 'My aim is to pay tribute to all the allied airmen who fought and died in my region during the war.' Mr Grimoud wrote. 'I want all compatriots to know that these brave men, who sometimes came from the other side of the planet, gave their lives for us and for our freedom.'"

Unfortunately we could not find Mr Watson's family. It is thought his older half-sister Iris, who would now be in her 80s, married a Jim Mitchell and lived in Napier. His parents, Mr and Mrs H E Watson, moved to Karori in Wellington shortly after their son's death.

Waipahi resident Keith Bacon remembers Ray Watson's father who boarded with Mr Bacon's family for two to three years in the 1940s. He believes Mr Watson was known as Bert. Mr Bacon's mother, Honora Bacon, was a war widow and had boarders at her family home in Gore. Bert Watson worked for farm machinery manufacturer International Harvester. Mr Bacon remembers Bert Watson also had a contract for cropping clover and used to return to the family farm at Otahu Flat some weekends. Former Clifden residents, the Rowley sisters, remember the Watsons well. Betty and Rosemary were living on their parents' sheep farm near the Clifden Bridge in the late 1930s, when the Watsons moved to a farm at Otahu Flat. Rosemary Carswell, now of Christchurch, was about 20 when she first met Ray. He became a good friend. "He used to take me to the balls", she said. "I remember going with him to get a truck load of coal from Ohai." Mrs Carswell, now aged 82, recalls a running race for couples at a district picnic in Clifden. Ray was her partner. "He was a good runner. I couldn't keep up", she said. Shortly after that Mrs Carswell partnered Ray to a Clifden dance. "I ended up dancing more with someone else", she laughed. "He met Nancy that night."

Nancy Charlton, of Tuatapere, was Rosemary's best friend. "She just clicked with Ray." The couple had many happy months and became engaged before he was sent overseas in July 1941. But the happy life they expected to have together was tragically cut short when the young couple died within a week of one another. Nancy was found dead on the floor of her parents' home on February 26th 1944, the victim of a suspected burst aneurysm. It was a Saturday, exactly a week after she was bridesmaid at the wedding of her baby sister Betty. Betty Chewings, now of Christchurch, remembers Nancy had been suffering from headaches and loss of balance. Mrs Chewings thinks it was the day he heard of Nancy's death that Ray Watson flew that ill-fated mission over the French countryside. It was very sad. "Lots of sad things happened in those days", Mrs Carswell said. We used to say that maybe they are in Heaven together now.

Raymond Watson was the veteran of 40 successful flights when, in bad weather, his plane crashed into the mountains near Rochefort- Montagne in the Puy-de-Dome area in central France. With him were three other New Zealanders: Flying Officer H W Henderson of Waikouaiti, Flight Sergeant A S Jones of Wanganui and Flight Sergeant R J Melville of Auckland. Mrs Carswell said that Ray should not have been flying that March night if he did know about Nancy's death. He should never have been sent out after a thing like that.

... to be continued next issue




C: 0274 247 102
T: 03 225 8652
E: admin@drakeplumbing.co.nz

KIERAN DRAKE
 Certifying Plumber
 & Drainlayer

For all your Accounting and Tax Solutions

Ask for Janice or Trevor England

 **03 2266110**

Aparima Accounting Ltd
 57 Main Road Tuatapere

FORDE SHEARING LIMITED

Available for all new and existing clients

For all your shearing and
 crutching requirements

Please phone Darin or Julie Forde

(03) 235 8853
 027 229 7760



Wayne & Rachel Saunders **027 457 6350**
 Qualified Butcher

rawfarming@yahoo.co.nz 82 Clifden Highway
 Tuatapere



Cut up the way you want
 Beef
 Pork
 Sheep
 Venison
 Other game meats
 Traditional Smallgoods



Registered **ELECTRICIAN**

For all electrical work
No job to small
A/Hours service available

Jay Brownlee
8 Carlyle Street, Tuatapere 9620
A/H 03 226 6673
Mob 027 4965 863
sparkieintuatapere@gmail.com

Have You Heard of Pickleball?

We are fortunate to have for our enjoyment a local all-weather pickleball facility at the Clifden Hall, which now has full toilet and kitchen facilities.



This exciting, easy to learn, fun game, is suitable for over 9 year old's and anyone with reasonable hand-ball coordination. We currently have players in their 70's grateful for the, easy on the joints, exercise gained.

Pickleball, which is a **hybrid of tennis, badminton and ping-pong**, is the fastest-growing sport in America.

Come along and join us for a fun evening **every Friday**.

The court is open for play from **5.30pm**

Beginner's tuition is available.

Private hire at times to suit is also available.

Bring gym shoes only as all other gear is provided.

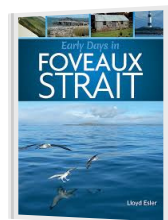
Phone Philip **027 9099 649** for info.

Looking for Books, Photos and People

Lloyd Esler, Historian

Hi Western Wanderer readers!

My most recent book, *Early Days in Foveaux Strait* has been published. It is available from me and outlets such as Te Hikoi, Paper Plus Invercargill, Bluff Service Centre and Windsor Stationery. It is the story of the settlement of Foveaux Strait up to about 1865.



One of my current projects is a short history of the Lower Waiau which is the Waiau catchment downstream from Lake Manapouri, and including Te Waewae Bay from Orepuki to Sandhill Point. I'm looking at the early schools, platinum, gold, shale, farming, roads, floods, Lake Hauroko Road, fishing, the impact of the hydro project, limestone, cement works, sawmills, ferries, and life in general in and around the river, especially in pioneering days.

I would like to locate books on Papatotara, Clifden, Blackmount, Orepuki and other localities within my area of interest, as well as early photos, and I would like the opportunity to talk to people about their experiences. I can be contacted at **03 213 0404** or esler@southnet.co.nz

Thank you very much.

MILLARS
- PLUMBING
- GAS FITTING
- DRAINLAYING
- LICENSED BUILDER
Master Plumbers
LIFE TIME QUALITY GUARANTEE
Ph 027 4340 705 or 03 225 8567

Aaron Cranston Building Ltd
027 252 7933
✓ Renovations
✓ Extensions
✓ New Builds
✓ Sheds/Farm buildings
✓ Decks
✓ Pre-purchase house Inspections
Call us for any building requirements
Ph 027 252 7933 email: aaroncbltd@gmail.com



George Harpur, SDC Councillor, Waiau Aparima Ward

Hi and greetings for March! We welcome back the great spell of sunshine we have had over the last two weeks which coincided well with a nine day break to Ross, and what a great trip. Turned the wipers off at Lorneville and have not used them since. The road trip back down the West Coast under a clear blue sky was amazing with a clear vision from the coast to the mountain tops. Thousands upon thousands of hectares of native bush growing majestically as far as the eye could see and it makes one wonder just how many trees do we need to maintain our carbon footprint. I am almost certain that if many of the critics did this trip on such a day would they rethink some of their opinions. We do live in a wonderful country and it would be great if we could keep it just as it is.

Locally we are looking great with some activities being initiated by the proactive groups - well done to them. There are also a few other opportunities on the horizon which I feel we can do, however this will need to be done in conjunction with a group of organisations. More on this next edition I hope. The Waiau A&P Show was well attended by all reports, so well done to the organisers.

As we progress into the autumn the winter codes will kick in and they will all need our support. These activities are essential to the welfare of our communities so please assist wherever possible.

Following on from this I was interested to read a Great South activity report and was taken back a little to find many activities around the greater Southland area but very few in the Western Southland area. I feel we need to be a little more proactive in this area as there are now some new funding streams available particularly in the new events area.

On the council scene we are as you all know a little cash strapped, in order to keep rates to an affordable level we must work smarter and be more effective. We all have ideas how to improve this and we only have to drive through a work site to confirm our thoughts. Do we have to commit commercial and economic suicide to adhere to modern day rules and regulations? Don't knock your locally elected members as most of the regulations that are turning our free and easy lifestyle into a "you do this or else" regime are not made at a rural level. I leave you with these thoughts.



Phone: Anita Green 027 506 2418

Tuesday 9-5pm, Thursday 10-8pm, Friday 10-5pm - Appointments are encouraged.

CHAMBERS REPAIR SERVICE

45 Half Mile Road, Tuatapere

Ph: (03) 226 6654

- 24 hour Self Service Fuel
- Full Mechanical Workshop
- Agents for Wide Span Garage
- NZ Post Centre
- Your Local Fish & Game Agent

2020 / 2021 Fishing Season

Licences available!



Children Under 12 Free	Junior	\$27.00
Adult	\$133.00	Loyal Senior \$113.00
Local Area	\$106.00	Family \$173.00

Other Licences include: Day, Short Break, Long Break, Winter & Non Resident

Cheque withdrawal:

With banks not accepting cheques by May 2021 and some business not accepting them now, we have decided to stop accepting cheques by 31st March 2021.



PASTURE METER READING THAT'S QUICKER AND EASIER, WITH AT THE GATE REPORTS

- Specialist in quality pasture meter reading with advanced sensor technology
- Provide 200 measurements per second or 18,500 readings over a single 500m pass
- Provides a fully integrated electronic support system
- Provides a secure web-based storage of information with easy access
- Prompt generated feed wedges for rapid decision making and seasonal comparisons
- Generate reports at the gate, supplying valuable pasture cover data and comparable results every time
- Improve health & increase animal hydration
- Enhance production & improve water quality
- Reduce bacterial/algae contamination of trough water

CLEAN TROUGH WATER MEANS IMPROVED LIVESTOCK HEALTH

Now 2 bikes available for pasture metering



Brett George • P 027 351 3408

E platemeterservices@gmail.com



UNDER NEW OWNERSHIP

Tuatapere Freight

(formerly Tui 2 Town Freight)

RUNS MONDAY TO FRIDAY
WEEKENDS BY ARRANGEMENT

Phone Brandon

027 436 4360



Southland Community Law Centre

5 Tay Street, Invercargill

Phone: (03) 214 3180 Fax: (03) 214 3170

Freephone: 0800 550 800 (outside Invercargill city only)

**Free Legal Information
& Advice for the
Community of
Southland**



"Providing Free Legal Advice & Information"
AWHI MANA TORU TORU ME MIHI KI MURIKU

Tea-Tree Oil Products

Non-toxic, healthier choices,
eco-sense and "affordable".

(Botanical name Melaleuca)

Please phone Imelda (03) 226 6665 or
email: pelmels@es.co.nz



SIMPLY SOOTHING
Soft tissue pain and tension release

ANN SUTHERLAND
Certified Bowen Practitioner

2475 Ohai-Clifden H/way
Oravia R.D. 2
Southland 9682

phone 03 225 5716
Fax 03 225 5716

Bowen Therapy is a gentle soft tissue manipulative therapy.
Through manipulation, tension in soft tissue is released reducing
pain and restoring movement and mobility.
Also offering Scenar Therapy.

Tui Base Camp



**Open from 7am
every day!**

**For all of your dine in and takeaway
requirements including:**

In-house roasted Amore Coffee

In-house made pies, sausage rolls,
cheese rolls

Range of breakfast options

Packed lunches

Catering

Upcoming Events

- ★ **Sunday Pool - 2pm every week
(guaranteed \$100 first place)**
- ★ **Sports Picking is all go, still a couple of
spots left!**
- ★ **Every Thursday Happy hour 5.30-6.30pm
& Free Pool all day**
- ★ **Friday Dinner Special - Indian Curry**

Phone: (03) 226 6250

www.tuibasecamp.co.nz





THE BEST DEALS... 'SURE TO BE \$URE'

 \$12.99 EACH Jim Beam / CC 4.8% 440ml 4pk (inc zero) cans Effen 330ml 4pk bottles	 \$14.99 EACH Woodstock 7% 330ml 6pk (inc zero) cans	 \$19.99 EACH KGB / Cody's (incl zero) 7% 250ml 12pk cans	 \$20.99 EACH Cruiser 12pk can range	 \$20.99 EACH Cruiser G&T/ Pink Gin / Seltzer all 250ml 12pk cans	 \$21.99 EACH Woodstock 5% bottles 250ml 7% cans (incl zero) Black Heart 7% 250ml cans all 12 pks	 \$22.99 EACH Not Stocked Tui 330ml 10pk cans	
 \$23.99 EACH Not Stocked Jim Beam Gold/ CC Premium 7% 250ml 12pk DC 8pk all cans	 \$25.99 EACH NEW FLAVOURS Long White 10pk bottle range	 \$25.99 EACH Not Stocked Smirnoff Ice Double Black 7% 12pk can range (ex guarana)	 \$28.99 EACH Not Stocked Jack Daniels & Cola Double Jack 330ml 10pk cans	 \$9.99 EACH Wolf Blass Yellow Label range (ex PN)	 \$9.99 EACH Jacobs Creek (ex Sparkling range) Five Flax range	 \$13.99 EACH Not Stocked Brown Brothers Moscato range	
 \$13.99 EACH Not Stocked Lake Chalice Falcon/St Hallet Gamekeepers ranges	 \$14.99 EACH Villa Maria Cellar Selection, Esk Valley (ex PN, Syrah, Grenache) ranges	 \$14.99 EACH Not Stocked Graham Norton's Own Sav Blanc 19/ Shiraz 17	 \$25.99 EACH Malibu / Kahlua 700ml (incl flavours)	 \$32.99 EACH Ivanov/Seagers (incl lime) 1L	 \$35.99 EACH Not Stocked Jameson/Absolut Beefeater (flvrd ranges ONLY) all 700ml	 \$37.99 EACH Finlandia Southern Comfort 1L	 \$39.99 EACH Bailey's 1L
 \$39.99 EACH Larios Rose/ Citrus / Larios 12 1L	 \$40.99 EACH Jim Beam 1L Canadian Club (incl spiced) 1L	 \$49.99 EACH Jagermeister / Mt Gay 1L Tito's 750ml	 \$53.99 EACH JB Double Oak / JB Rye 1L Haku Vodka / Roku Gin 700ml	 \$62.99 EACH Not Stocked Chivas Regal 12yr 1L Glenlivet 12yr 700ml	 \$18.99 EACH Not Stocked Fortune Flavours 6pk range	 \$19.99 EACH Somersby 10pk can range	
 \$21.99 EACH Not Stocked Haagen 15pk bottles	 \$22.99 EACH Not Stocked Tiger / Tiger Crystal 12pk bottles	 \$22.99 EACH Not Stocked Urcnara 12pk range	 \$22.99 EACH Not Stocked Guinness / Kilkenny 440ml 6pk cans	 \$23.99 EACH Not Stocked Asahi 12pk bottles	 \$23.99 EACH Monteith's Classics ex batch brewed 12pk range		
 \$24.99 EACH Lion Red, Speights, Waikato or Summit 15pk bottles	 \$29.99 EACH Heineken 15pk bottles	 \$31.99 EACH Not Stocked Peroni 18pk bottles	 \$36.99 EACH Tui/Export Gold/Extra Low Carb/ DB Draught 24pk bottles	 \$41.99 EACH Export 33 24pk bottles			

Promotion period between 1/03/2021 to 31/03/2021. While stocks last. Promotion only available at participating stores. Please contact your local store to confirm whether they are participating in the promotion and check the pricing in-store prior to purchase. Online pricing will vary.



100% **NEW ZEALAND** OWNED AND OPERATED
thirstyliquor.co.nz

FOLLOW US ON
 SOCIAL MEDIA



ASK ABOUT
 LOYALTY CARD
 BENEFITS &
 GIFT VOUCHERS



Tuatapere Lions Club

John Knowler



Greetings once again from the Tuatapere Lions Club - our wish would be for a happy and enjoyable break for the Xmas and New year even if the weather was at times frustrating. Our club members enjoyed an evening together in early December for our Xmas meeting. It may surprise but as a club we don't get many occasions where all members and partners can enjoy together. Special thanks to The Town and Country staff for such an enjoyable evening and meal.

The really good news for our club is that the new ambulance shed construction has begun after months of frustration, red tape and price increases. Sincere thanks to the ambulance committee who have dealt with all the problems. Finding sponsors is the next hurdle so that the building can be debt free at opening.

The Waitangi golf tournament was very successful again. Sixty plus golfers enjoyed a lovely warm day with some excellent scores and prizes to match. A very sincere thank you to all who helped in many ways and a profit of approximately \$6000 which will be presented to Hospice. Running an event of this magnitude does see a huge effort by quite a number of people. Also thanks to the Golf Club for their venue. The club has made donations recently to a student for tertiary education - donation to the Xmas dinner- to the Gutsel family.

The club recently received a letter of congratulations from the World Governor for the many and varied projects carried out in our area. These letters are not given out without rigorous evaluation so members can be proud of our contribution to the Tuatapere area.

Events in the future include the Lions Borland Leadership course, the annual bowls game against the Ohai-Nightcaps Club - always an enjoyable night and our annual convention held this year in Te Anau.

Our members offer, to President Jimmy and Adrienne, their condolences for the loss of Jimmy's mother Dorothy and Adrienne's niece. Also to Ross and Joan Cockburn of Te Anau in the passing of their son Grant. Ross was a past District Governor.

MOUNTAINS EDGE CABINS MONOWAI



Hunting, Fishing, Mountain Biking,
Kayaking & Tramping
Cabin Accommodation

12 Cabins
Double and Single Available
\$35.00 per person per night

Eftpos available

Full Kitchen Facilities, Showers, Toilets, Playground
& the Tennis Courts right across the road!

We are 'pet friendly'

www.mountainedgCabins.com
Email: mountainedgCabins@gmail.com

75 Turbine Drive, Monowai. Ph. 03 225 8267



* 13 Tonne Digger * 5.5 Tonne Digger * 2.7 Tonne Digger- dry hire or operated
* Tip Truck * Bob Cat * Augers * Post Driver * Tree Saw & Hedge Trimmer

* Tree Trimming * Post Driving * Fencing * Cleaning of Wintering Sheds * Site
Clearance * Cartage * Gravelling * Lane Maintenance * General Earthworks

For all enquiries and bookings please contact Lance or Alice Harris

Lance: 027 304 3714

Alice: 027 270 0363

Email: lanceharris533@gmail.com

Check us out on facebook- Harry's Machines

WAIAU VALLEY SHEARING LTD



Simon de Vries

Julie Heaps

027 840 9867

03 226 6212

WELCOME TO Tuatapere

If you are new to the district, the Tuatapere and Districts Promotions Group welcomes you. We hope you enjoy living in our community.

Here are some details that will help you find your way around our local services, including council, regulatory and community.

However, if there is something else you need help with, please contact community worker Keri Potter on 027 757 5983.

Also interesting and worthwhile are www.onnaturesedge.co.nz and the Tuatapere and Districts Community Facebook page & the This is Tuatapere Facebook page

If we have missed your sport, club or committee please don't hesitate to let us know and we will add you! thisistuatapere@gmail.com

Tuatapere and Districts - What's On?



Want to know what's on?

Got an event, meeting, sporting event, workshop, entertainment that you want everyone to know about?

Add it to What's On!

Don't have a computer or would like someone to show you how to add your event, feel free to contact us and we'd be happy to help you!

Send us an email:

yourwesternwanderer@gmail.com

Visit www.onnaturesedge.co.nz

Community Event Sign



Do you have an event coming up you would like to promote on here?

Email us the details

yourwesternwanderer@gmail.com

OR

drop a note
with contact details in the
mailbox @ 18 Orawia Rd
Tuatapere

**Pull me out and keep
for future reference**

*If you notice an error or your group has been missed out please contact us on **thisistuatapere@gmail.com** and we will update our master file.
We are hoping to publish an updated "pull-out" on a regular basis.*

*If you know of someone new to the district please let us know so that
we can give them a welcome pack.*

Rubbish and Council Regulatory Information

- ★ Rubbish and recycle bins are emptied alternately on Wednesdays, red-top bin is for general household rubbish and yellow-top bin is for recyclable material. You can also dispose of recyclables at the Recycle Centre at the end of King Street.
- ★ Southland District Council, 0800 732 732, www.southlanddc.govt.nz, for all queries regarding buildings, noise control, dog regulations, water, sewerage and stormwater.
- ★ Local Authority representatives, Southland District Councillor George Harpur 027 652 6728; Tuatapere Community Board Chair Margret Thomas (03) 226 6104.

Community Services in Tuatapere and District

- ★ Emergency calls – police, fire brigade, ambulance – phone 111
 - ★ Non-urgent police inquiries (03) 226 9020 (if station is unmanned, calls will be diverted to Invercargill)
 - ★ Tuatapere has an active St John Ambulance service supported by the local Lions Club. The Ambulance service is free to Tuatapere residents. Both the Tuatapere Ambulance service and Tuatapere Fire Brigade are always looking for volunteers. If you are interested please contact: Jane Norman (03) 226 6502 (ambulance) or Brendon Diack (03) 226 6551 (fire).
 - ★ Medical Centre, (03) 226 6123, 69a Orawia Rd, opposite the Tuatapere swimming pool. Prescription medication can be picked up from the pharmacy depot (03) 226 6999 at the rear of the medical centre. Physiotherapy is also available, contact the medical centre.
 - ★ The St John Western Southland Health Shuttle service is available (by donation) to everyone in Western Southland for any health-related appointments. For bookings, phone St John on 0800 103 046 prior to 3pm the day before your appointment.
 - ★ Postal Services: Chambers Garage, 45 Half Mile Rd, 03 226 6654, open Monday-Friday 9am-5pm. Postal delivery within the town boundary, Monday, Wednesday and Friday.
 - ★ Justices of the Peace: Don Egerton (03) 226 6114, Keri Potter 027 526 3137, Shirley White 027 504 5220, Nicky Baker 027 643 5880.
 - ★ Victim Support: Pat Murdoch (03) 226 6350
 - ★ Tuatapere Plunket Society: Kelly Turner (nurse) 027 687 7921
 - ★ Independent Midwife: Isobel Devery (03) 226 6822 / 027 226 7020
 - ★ Meals on Wheels, enquires to the Medical Centre (03) 2266 123
 - ★ The Waiau Memorial Library is a free community service.
Open Friday 10am-11.30am, 2.30pm-4pm, 7pm-8pm, Jan Laurie (03) 226 6398
-
-

Churches

- ★ Tuatapere Presbyterian Church, Chris Howden (03) 225 5161, Sunday service 10.30am
- ★ Tuatapere Catholic Church, Anne Horrell (03) 2266627 Saturday service 5.00pm held in the Anglican Church
- ★ Tuatapere Anglican Church, Les Smart (03) 226 6456 first and third Sunday of the month at 10 am

Education and Childcare

- ★ Waiau Area School (03) 226 6285
- ★ Hauroko Valley Primary School (03) 226 6753
- ★ Tuatapere Playgroup, Friday 9am-12pm, Gemma Bennett 022 040 3368
- ★ Clifden Playgroup, Wednesday 9:30am-12:30pm, Lynley Patterson 027 429 7436
- ★ Mainly Music, Monday 10am-12pm, Heidi Berkelaar 022 315 3326
- ★ Tuatapere Toy Library, Nathalie Pahl 027 475 9075
- ★ Just 4 Kids Daycare, Yvonne Nimmo 027 415 7816, Jasmine Van Dam 027 501 7355

Trade and Repair Services

- ★ Plumbers: Kieran Drake Plumbing 027 424 7102, Millars Plumbing (03) 225 8567, Aparima Plumbing (Alan Eastwood) (03) 234 8016
- ★ Electricians: Jay Brownlee 027 496 5863, Riverton Electrical 027 432 7215, Western Electrical 027 439 3787, Mathieson Electrical 027 634 7534
- ★ Landscape & Gardening: Robert Orchard 027 924 1204, Debbie Chandler 021 259 9620
- ★ Service Stations:
Tuatapere Service Station (03) 226 6475, Chambers Garage (03) 226 6654
- ★ Appliance Repairs: Roald 021 024 88737 (summer season)
- ★ Builders: Aaron Cranston 027 252 7933, Ben McMaster 027 202 7955, Paul Anderson 027 890 3602, Ross Burgess 027 424 6021
- ★ Veterinary Clinics: Otautau Vets Ltd (03) 225 8134, VetSouth (03) 225 8206
- ★ Engineering, Steel Fabrication & Repairs: Mr Steel (Malcom) 027 276 6816

Food, Takeaways and Beverages

- ★ The Tuatapere Four Square Supermarket, groceries/takeaways, open seven days 7.30am-9pm, (03) 22 66898
 - ★ The Hungry Hippo (03) 226 6417
 - ★ Orepuki Beach Café Orepuki (03) 234 5211
 - ★ Waiau Town & Country Club (03) 226 6489
 - ★ Tui Base Camp Motels, Backpackers and Holiday Park (03) 226 6250
 - ★ Bucket Honey Café 022 088 7993
-
-

Sports, Clubs and Organisations in and around Tuatapere

**Pull me out and keep
for future reference**

A&P Society - Isobel Devery 027 226 7020
Axeman's Athletic Society - Christine Egerton (03) 226 6113
Bushmans Museum - Lindsay Faulkner (03) 226 6650
Baths Committee - Kaylene Bennett 027 432 7156 / kaylene@beachvalley.co.nz
Book Club - Carole Campbell 021 0824 9349
Cemetery Trust - Maurice Green (03) 226 6065
Civil Defence - Geoff Evans (03) 226 6258
Clifden Rural Women - Lynley Whyte 021 211 5553 / whyte.5@farmside.co.nz
Community Gardens - Isobel Green (03) 226 6065
Country Corner Crafts - Lyla Sherriff (03) 226 6187 Louise Greber (03) 668 6001
Fire Brigade - Brendon Diack (03) 226 6551 / 027 231 9708
Golf Club - Carol Erskine (03) 226 6602 / 027 459 9654
Hauroko Valley Primary School - (03) 226 6753 / office@haurokovalley.school.nz
Locator Beacon Trust - John Munro (03) 226 6341/027 412 2925 locatorbeacons@gmail.com
L Clarke Fit - Lorelee Clarke 021 888 415 (fitness classes)
Waiau Valley Netball Club - Debbie Chandler 021 259 9620
Orawia Embroidery Group - Faith Black (03) 225 5822
Senior Citizens - Friday afternoons - Olive Bennett (03) 226 6477
Southland Locator Beacon - John Munro (03) 226 6341 / 027 412 2925
Spinning & Weaving - Lyla Sherriff (03) 226 6187
Squash Club - Kate Gray 0274139124
Tuatapere Bowling Club - Ian Van Dam (03) 226 6447
Tuatapere Community Worker - Keri Potter 027 757 5983
Tuatapere Highland Dancing - Lisa McCracken 027 361 4474
Tuatapere Hump Ridge Track Office - (03) 226 6739 / Cedric Wedderburn 022 027 3834
Ladies Bowling Club - Olive Bennett (03) 226 6477
Tuatapere & District Promotion Inc - Paula McKenzie 027 434 6777
Tuatapere Lions Club - Jimmy Harris (03) 226 6507 Maurice Green - (03) 226 6065
Tuatapere Pipe Band Hall - Helen Ogle (03) 226 6017
Tuatapere Playgroup - Gemma Bennett 022 040 3368
Tuatapere RSA - John Munro (03) 226 6341 / 027 412 2925
Tuatapere Scouts - Quinton Erskine (03) 226 6969 / 027 223 4842
Tuatapere Tennis Club - Debbie Fowle 027 525 5052
Tuatapere Toy Library - Nathalie Pahl 027 475 9075
Waiau Area School - (03) 226 6285 / admin@was.school.nz
Waiau Community Theatre - Sue Edgerton 022 164 1971 / Anne Horrell (03) 226 6627
Waiau Memorial Library - Jan Laurie (03) 226 6398
Waiau Rivercare Group - Paul Marshall waiau.rivercare.group@gmail.com
Waiau Small Bore Rifle Club - Quinton Erskine (03) 226 6969
Waiau Squash Club Captains: Sam Egerton 027 250 5477, Nic Mitchell 021 815 531
Waiau Star Rugby Club - Blayne de Vries 027 631 7273
Waiau Junior Star Rugby - Jeremy Gray 027 225 5212 / jk.gray@xtra.co.nz
Waiau Swimming Club - Kaylene Bennett 027 432 7156
Waiau Town & Country Club Card Group - Lindsay Faulkner (03) 226 6650
Western Southland Gun Club (Clay Targets) - Des Chambers (03) 226 6654
Western Southland Woolcraft Group - Helen Todd 022 378 9743
Wine Club - Lynette Chambers (03) 226 6654

Ratty Says ...

Waiau Memorial Library



Show Day!

I had a great time at the show on Saturday. I got to try all sorts of new things. It was like one big day long adventure. I got to shoot a paintball gun. It made lots of popping noises. If you hit a balloon, you got a chocolate fish. I missed. While I was there I met Moose. He is the biggest dog I have ever seen. Moose is a Great Dane and he's almost as big as a pony. Then I visited the donkeys. A nice lady let me sit on one. I really want a donkey now. After that it was off to see the puppies and other animals.

I dropped off my entries for the Produce section of the show. I had my recycled robot, scones, colouring in, and a knitted scarf and a pair of shorts in the Open section. In the kids section there were lots of scones (some of them were so fresh they were still warm), decorated muffins, lots of 5-10 year old colouring in, one 10-15 year old colouring in, some photos, a wooden train and a butterfly. I was a bit sad that no one else had made a Robot.

At the end of the day, Anne-Marie gave me a rosette to say thank you for all my help encouraging kids to have a go at entering in the Produce section of the Show. I had lots of fun and I hope more kids have a go next year.



accelerate
PHYSIOTHERAPY



Lindsay Stephenson
Dip Phty, Dip MT, Reg Acup, P3 Dip Rehab, MNZCP (pain management)



Andrea Murray
Dip Phty, Dip MT



Alana Makolm
BPhy, BPAEd, Reg Pilates Instructor, PGCert (acup), Reg Acup

See the friendly team for help with...

- Back and neck rehabilitation
- Sports injuries
- Dizziness
- Chronic pain
- Occupational health
- PING/Steel Pilates for cancer survivors
- Breathing disorders
- Exercise programmes

Invercargill clinic open late nights

ACC available

Weekly satellite clinics in Tuatapere and Ohai

accelerate
PHYSIOTHERAPY

60 Deveron Street, Invercargill
P 218 6583 F 218 4105
E office@acceleratephysio.co.nz
www.acceleratephysio.co.nz

CANTERBURY CARS **4WD** Specialists

For all your vehicle requirements

Cars, utes, 4WDs, vans

Finance available

Contact: Murray Dowling
027 556 2655

Visit our website
www.canterburycars4x4.co.nz

Specialising in
Dairy Conversions
Rural Fencing
Post & Rail

H Gill Fencing,
Eastern Bush

Phone 021 225 5489

After Hours 03 225 5488

Email hamish@hgillfencing.co.nz





Agricultural Contractors servicing Western Southland and beyo

BALAGE - SILAGE - GROUNDWORK - FEED TRADING
Nigel 021 226 6156 / fowlecontracting@gmail.com

Can you sing? Can you dance? Do you have a special talent you want to show us? If you think you have the X-Factor WE WANT TO SEE YOU!

Enter as a group, a couple or individually. We want to see people of all ages!

Competition date is Sunday 28th March 2021

Loads of awesome prizes! And the title of TUI X FACTOR CHAMPION!

\$5 entry fee per person

Keep an eye on the Tuatapere Toy Library Facebook page & the Waiau Town & Country Club Facebook page for updates on this exciting fundraising event for the Tuatapere Toy Library!



MR STEEL

TUATAPERE

PH: 027 276 6816

MALCOLM

**For all your engineering,
steel fabrication and repair needs!**

Painting & Handyman Services

Experienced Painter

I can help with all sorts of odd jobs too!

- Gardening
- Lawn mowing
- Tree & Hedge Trimming
- General labouring



Phone **Luke Wikstrom** 027 2773 925



**BEN MCMASTER
BUILDING**

Ph: 027 202 7955

benmcmaster@live.com

- Licensed Building Practitioner
- Sheds, renovations & new homes
- Based in Western Southland

You dream it, we'll build it

Shearing
magazine

Des Williams (editor)

Tel 07 839 2891 : Mob 0274 833 465

Email : shearingmag@xtra.co.nz

Member NZ Guild of Agricultural Journalists and Communicators (Inc)

LAST SIDE PUBLISHING LTD

PO Box 102, Hamilton 3240, New Zealand

PAUL ANDERSON BUILDER

AVAILABLE FOR ALL YOUR
BUILDING REQUIREMENTS.

NO JOB TOO SMALL.
COMPETITIVE RATES.
REFERENCES AVAILABLE!



Mobile: 027 890 3602

thetakis@outlook.com

Walking the Humpridge Track??

**Book 1 night before and get
1 night FREE after you walk
the track**



"The Cliffs"
Sea Side Lodge Motels

**03 226 6066 or
027 390 3117**



CONTACT US TODAY

Phone 03 221 7192

Fax 03 221 7194



- Excavators for general farmwork
- Laser guided drainage
- Gorse mulching & land clearing
- Lane maintenance
- Conversions
- Effluent Ponds
- Demolition
- 20 tonne bulldozer, roller, grader
- Drain ploughing & alkathene laying

Bucket Honey Cafe

We have

- HONEY
- Great Coffee
- Homemade Pies
- Juice Bar
- Sandwich Bar
- Homemade Icecream

Come in and try our honey!

*Phone: (03) 208-3542
16 Orawia Road, Tuatapere*





We specialise in:

Resource consents

Farm environmental plans

Policy advice

DOC concessions

Landscape plans & assessment

We take care of the paperwork,
so you can do what you do best!

Sonya: 027 5050 077

Rebecca: 027 4246 129

www.slwp.co.nz

Locally owned & operated

Landscape Garden Design

What do you want
from your garden?

Whether building new or
revamping your existing garden
an overall plan is essential.

Free Initial Site Visit

From a few questions to get
you started, to a full landscape design.



Village Green
Garden Design
Tuatapere

Ph Robert
027 9241 204

ESSENTIAL OILS

100% PURE GIFTS OF NATURE

Florals Trees Plants Herbs Spices Citrus

To learn more

phone your local
Wellness Advocate

Carol Erskine 027 459 9654

SEEKING A CALF-REARER

15 mins from Tuatapere.

Good hourly rate negotiable
depending on experience. Calving
1000 cows and rearing 300 calves.

Phone Lynley on 027 4297 436

TUATAPERE OUTDOORS & HARDWARE

For all your

Gardening tools, lawn care, garden
hoses, insect and disease sprays, potting
and compost.

We have those building requirements for
that weekend job with a good selection of
silicone, nails, screws and bolts.

New fishing rods and reels, fishing lures,
good selection of soft bait,
fishing nets, flounder and eel nets.



Good selection
of giftware.

Come in, check out
what we have.

Contact:

Judy **027 225 8192**

Paul **027 890 3602**

Shop **(03) 226 6363**



MATHIESON

ELECTRICAL LTD

ETHAN MATHIESON

M 027 634 7534 A/H 03 225 8891

E mathiesonelectrical@vodafone.co.nz

- Domestic
- Commercial
- Dairy
- Pumping & Effluent
- Heat Pump Installation
- Heat Pump Servicing

TUATAPERE CHRISTMAS LUNCH

Tuatapere Community Support Worker

I would just like to take this opportunity to sincerely thank all that contributed to the success of our Community Christmas Lunch (2020).

A special mention to our generous sponsors, without whom, we could not have run such a fantastic event.

DT King
Lions Club Tuatapere
4 Square Tuatapere

PGG Wrightson
Tui Base Camp
Waiau Town & Country Club

Waiau Area School
Koha Kai
Janice England

With grateful thanks also to all the volunteers who gave generously of their time and talents, the community spirit in Tuatapere was very much felt and appreciated.

Tuatapere is a very special place and the ability to have a Christmas lunch for the people of our district to attend is so valuable in strengthening our community.

We are looking forward to running another Christmas Lunch this year, if you would like to be involved, please contact me directly.

Keri Potter



COMMUNITY CHRISTMAS LUNCH

TUATAPERE. 2020

ATTENDEES

40 local people including 3 Children

COMMUNITY WORKER

Initiated and organised by our local Community Worker over a period of 12 weeks

TIME SPENT

50 volunteer hours from our volunteers contributed to the success of the day!

SPONSORS

We could not have run the day without our 9 sponsors. Legends.

VOLUNTEERS

8 Volunteers from the local community came along to help out, before, during and after the event.

"I would like to thank you for the excellent Xmas dinner you put on. Thanks again"



INTRODUCING

**STREBEL STRIP TILLER
WITH A KUHN 6 ROW
BEET PLANTER COMBINED
FRONT FERT HOPPER**



STRIP TILLER BENEFITS:

ONE PASS - SAVING YOU MONEY

LESS CULTIVATION = LESS BUGGING

KUHN BEET PLANTER IS ABLE TO SOW SWEDE & BEET



FOR MORE INFO OR TO BOOK PH:

Kahu - 027 5183 448

Welcome to the March Edition of
"What's Been Happening?" at....

Hauroko
VALLEY PRIMARY SCHOOL

Kia ora Western Wanderer readers



Kia ora, Namaraskan, Bula

Welcome back to school! We extend a hearty Hauroko Valley welcome to Kylie, Lauren and Nelina who have joined Kowhai class. It is exciting to have you with us and we look forward to getting to know you and your families.

We start the year getting to know our learners; so we can guide and lead growth in their learning. Our home and school partnerships involve collaborative working relationships between families and schools. These ensure productive work focusing our students' interests, motivation and engagement in learning both at home and at school. These partnerships enable us to provide a wealth of opportunities for our children.

Kowhai, Matai, Totara and Rata classes have settled into routines with teaching and learning programmes gathering momentum. As part of our cultural discoveries students have identified where they come from including special landmarks and family connections as part of introductions through mihi. Athletics training is in full swing, along with Touch kicking off on Monday.

Discovery Time is a weekly highlight where Kowhai and Matai students and our 4 year-old friends spend time working with others; while engaging in a range of creative experiences. The collaboration and discussion while at stations is inspiring with amazing thinking out side of the box. The golden sand delivered by Jamie and Nathan has been an instant hit with daily creations including; mountains, tunnels, farmlands, holes, caves, rivers and roads. Thanks guys!

Our Year 7&8 students were excited with the opportunity to learn surfing as part of our unique "Have A Go Programme". Thanks to Jess from Southland Surf School for superb tuition. Twenty students made up our school swimming squad for the Western Southland Swimming Championships - with awesome achievements. Congratulations to Addi & Jack for securing a win in the Year 7&8 relay event. It was a pleasure to share this win by combining with Takitimu Primary School.

Thanks to our Home and School team for organising our annual family community cricket game. It was a stunning afternoon for our suburb vs suburb cricket challenge. Congratulations to the Clifden South team who took out the trophy for 2021! Please save the date to support The Blackmount Trail Ride on Saturday 13th March. Check out further information on Facebook - Blackmount Trail Ride. This is a major fundraiser for our school community with all funds going directly to support our students. Until next time - Julia Waikato, Tumuaki/Principal



Term 1, 2021 Events

February - Massey University Evaluation - Healthy Active Learning, Harold & Teresa from the Life Education Bus, HVP Clubs, Sport Southland, Secondary School Triathlon, Rippa Rugby Tournament

March - HVP Ag Kids, Athletics, Technology, Southland Regional Agrikids, Golf, Rippa Rugby

Always Our Best/Tonu to tatou pai

For Landscaping, Lane Maintenance, Gravel Supply & Cartage

GRADES OF CRUSHED & SCREENED GRAVELS, ALKATHENE LAYING, ROOTRAKING, FARM TRACKS, DAIRY LANES



**K J SUTHERLAND
GRAVELLING & AGRICULTURAL CONTRACTOR
2475 OHAI-CLIFDEN H/WAY
ORAWIA R.D2 OTAUTAU 9682
Ph 0274 367 934**



ELEVATOR SCRAPER, BOBCAT & ATTACHMENTS, LANDSCAPING, TRENCHING AUGERS

Supplies of Gravel Ex Waiau River

River Run Screened Grades Concrete Gravel Pea Gravel
Rejects for soak holes Crushed - AP30 and AP65

Peebles for Sheep and Cattle yards and calf sheds
Fines suitable for cow lane capping

K.J. Sutherland Contracting Bobcat T190

**With attachments: Landscape Rake,
Augers and Trencher**

**Suitable for all landscaping, shed and yard
maintenance**

Muck-spreader and tip trailer available



**PHONE KEVIN
027 367 934 / (03) 225 5716**

INDEPENDENT MIDWIFE

ISOBEL DEVERY

*Caring for women throughout
Pregnancy, Birth till six weeks
Post Natal.*

*Choices for place of birth,
Home or Winton Birthing Units
or Kew Hospital.*

*Free pregnancy tests
available on request.*

**Phone: (03) 22668822
027 2267020**

©Peccaro, EthnoGraphics®

WAIAU HEALTH TRUST – MARCH 2021

Medical Centre

As you are all aware, New Zealand is aiming to begin a Covid Vaccination programme, later in the year. Due to this, we are endeavouring to complete our catch up vaccination programmes that are currently available in New Zealand.

Below are the list of current catch up programmes. If you, or your family members fit within one of these below schedules, please phone the surgery and discuss with a nurse.

Meningococcal Vaccine: One dose for adolescents and young adults aged 13–25 years inclusively, who are entering within the next 3 months, or in their first year of living in a *boarding school hostel, tertiary education halls of residence, military barrack, or prison.*

Boostrix (Whooping Cough/Tetanus/Diphtheria): Every pregnancy from 2nd trimester. Adult boosters offered at 45 & 65 years of age.

Influenza (annually): Every pregnancy & Aged 65 years or over. Funded from 6 months of age in defined risk groups. *We will be holding flu vaccine clinics as soon as the vaccines arrive. You will be notified by text when these will be occurring.*

MMR (Measles/Mumps/Rubella): Two documented doses over 12 months of age, with minimum 4-week interval required, for those born since 1 Jan 1969. *Please check at home for old plunket books, as these can be immensely helpful when determining if there has been 2 documented doses.*

HPV (Human Papilloma Virus): Aged 11 - 14 years, 2 doses given at least 5 months apart, even if 2nd dose given over 15 years.

Aged 15 - 27 years, 3 doses given with minimum of 5 months between HPV doses 1 & 3.

Varicella (Chicken Pox): Born on or after 1 April 2016. Turned 11 years on or after 1 July 2017 (if hasn't had the disease as a child).

Zostavax (Shingles): Turned 65 years on or after 1 April 2018 up to 81 years of age. *There are some exclusions to this vaccine. Please discuss with a nurse if you are interested in this.*

Liquid Nitrogen clinic – March 31st - please phone to make an appointment.

When you receive a text from one of our team at the Medical Centre in regards to smoking or other recalls, please reply at your earliest convenience, this will save you receiving repeat texts.



Waiau Health Trust
69a Orawia Road, Tuatapere
Approved Registered ACC Provider
Monday to Friday
8:30am – 4:30pm
Ph.: 2266123

Practitioner Hours
Amanda McCracken (NP) – every
weekday

Sheryl Eden (NP) – every Monday &
Tuesday

Liz Scott (GP)
2nd Tuesday of every month

Physiotherapist
Tuesdays & Thursdays
Phone for an appointment

Podiatrist
Visits regularly –
Phone for an appointment

Warts/Minor Skin Lesions
Liquid Nitrogen treatment available
Phone for an appointment

Homebased Maternity Care
We are offering this service in the
patient's home. Please contact Jo
Sanford on 2266123 for enquiries.

Day Activities Programme for
the Elderly
Every Tuesday & Wednesday
Please phone for further information.

District Nursing
Available as required by referral

This is mandatory for our practice driven by the Ministry of Health to achieve national targets. We appreciate your understanding in replying to the details requested.

GP Availability

I am continuing to source a regular weekly GP, I am sure you will appreciate how difficult this is. We have been advertising and looking at every option possible for over a year now. Availability of GP's in our location is proving impossible, in the near future we will be doing our best to provide this service however due to these changes you may not always be able to see the GP of your choice. I urge you please to contact me should there be any issues with our current service. I find it very disappointing to hear of people discussing their concerns or complaints in the community. Our patients are of utmost importance and we will always strive to offer you the highest standard of care possible. We are fortunate to have Dr Murray Allen returning to work with us every Thursday beginning early May.

Maternity Support Services

We are now holding weekly coffee groups every Thursday running between 1.00pm - 3.00 pm. We are endeavouring to have speakers on a regular basis to benefit the learning of new Mum's. We are hosting Kirstyn from Post Natal Depression Southland on Saturday 27th March 2021, 10.00am - 11.30am. Kirstyn will be speaking about PND and the signs to look for and be aware of. We welcome new or expectant mothers, grandmothers, friends or anyone who is interested to know more about this condition.

Community Forum:

Waiau Health are hosting a community forum on 29th March at 7pm, Day Activities Room in the Maternity Hub.

We would very much appreciate your input at this forum, we welcome any suggestions you may have to enhance or complement our service.

If you would rather contact us prior to the forum to add an item for discussion on the night please feel free contact me prior.


Kind regards

Jo Sanford (Manager) **Cell: 027 2950 429**

For all your fencing requirements
WESTERN FENCING
SHEEP | DAIRY | DEER




Call BEVAN 0277 413 213



DAGWOOD DAGGING

Available now to all new and existing customers for all your crutching requirements.

3 Stand or Single trailer available
7 days a week, wet or dry.



No job too big or too small.
Competitive rates

Jeff Chambers
027 3042 241

PROPERTIES WANTED!

Contemplating selling? You might be surprised by what your property could fetch on today's market

Contact Julie today for a free appraisal and to discuss how you could take advantage of this buoyant property market



Julie Guise
021 256 4164
julieguise@sre.co.nz

SOUTHLAND REAL ESTATE LTD
Licensed under The Real Estate Agents Act 2008

SOUTHLAND REAL ESTATE LTD
Licensed under The Real Estate Agents Act 2008 MREINZ



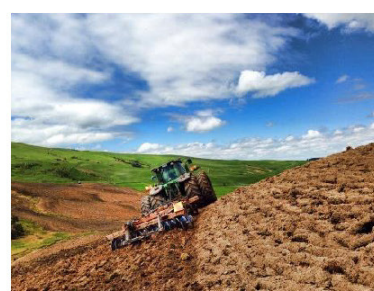
Rabco Ag Ltd – 021 362 766 – admin@rabco.nz
Agricultural Contracting Specialists - Western Southland



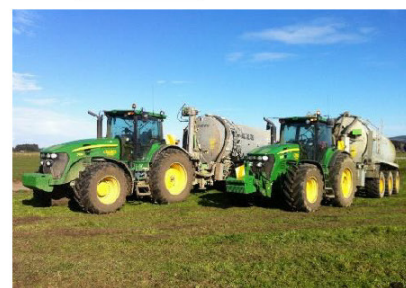
**Full silage
& baling
service**



Cultivation – including Direct Drill & Precision Drill



Effluent – Excavators - Hedgetrimming





Kia ora Western Wanderer Readers!

The 2021 school year has **kicked off to a cracker start**. It's absolutely magic the way the students and staff have started back with the same **positive momentum** as last year. It really has been seamless. It's a credit to WAS' culture and the way people treat one another. We've got some new faces at WAS this year and we're very proud to say that they're a real credit to their families and contributing schools - they all have very **positive attitudes and good manners**.

Thank you to the families and community members who have been involved with helping WAS to date. Whether it's supporting your own child preparing for school, helping other students, getting involved in the community, supporting the staff, liking our FB pages or even saying a positive word about WAS - it's very much appreciated. We are all **very proud of your community school** and it's certainly **punching above its weight**. WAS is building from strength to strength and we welcome you to pop in and see us in action.

Current staff involved at WAS are:

Support staff - Anne-Marie Erskine, Rachel PB, Karen Reid, Cheryl Baldwin, Charmaine Wedderburn, Richard Hazle, Nina Smith, Robyn Stanning, Mel Templeton, John McNab, Kiwia Howley.

Teaching staff - Jodie Garrett, Chris Wedderburn, Ian Russ, Lisa Redhead, Hannah Wilson, Helen Scott, Andrew PB, Jazz Quinn, Richard Bennett, Paul Maloney, Mary Ann McNab, Brooke Anderson, Chantelle Gibbs, Clare Robinson, Donnah Cleaver, Hayley Landreth and Chrissy Lampitt. If you'd like to know their positions and titles please see our website.

We have **two vacancies** available - a cleaning position for 12.5 hrs per week and an assistant caretaker/property role of 8-10 hours (perhaps one day) per week. Please contact Charmaine in the office if interested.



2020 student achievement:

- 79% (85/107) are reading at or above their expected level in Years 1-10.
- 65% (69/107) are writing at or above their expected level in Years 1-10.
- 69% (74/107) are at or above their expected level in maths in Years 1-10.
- 83% (19/23) of targeted students reached their intervention goal by the end of the year.
- Three Year 10 students gained 28, 16 and 16 (bank them for Year 11) NCEA credits respectively.
- 94% (16/17) of our end of year NCEA students gained their literacy & numeracy requirement.
- Eleven students successfully passed their external examinations. Some students did not sit externals.
- 76% (13/17) have gained the necessary number of credits for their given NCEA level.
- All of our three school leavers have gone on to tertiary education or have a full time job.

It's worth noting that those who haven't quite achieved the results they would have liked, those in the younger year levels, and those who are not quite working at the level expected, have all made progress. Sometimes we focus on hard cold data. I'd like to also acknowledge the progress all our students have made and are consistently making now. The difference in their attitude, the way they present themselves, their confidence levels, their manners and general wellbeing is equally important and something that isn't always reflected in data results! We do know our attendance levels are above national averages, and that our students are happy and have a positive attitude towards their learning and others. A massive thanks must go to the families and staff.

Nga mihi, take care and keep safe.
Andrew PB

Alex Reid CONTRACTING

**Paddock Cultivation from
Ploughing to Sowing Dry Hire
available Aerating Direct
Drilling Ridging Mulching**



Dairy Lane Maintenance

Tip Trailers • Vibrating Roller • Effluent Services

Sheep Conveyor

Drenching, Vaccination etc • 3 way draft



Rural Contractors
NEW ZEALAND

Large Skid Steer for calf shed cleaning, loading Muck Spreaders etc

4 Muck Spreaders • 16,000 litre Slurry Tanker
• Pond Stirrer • Umbilical Slurry System

**PH ALEX 0212775308 CELL
03 2255377 HOME**

WaterForce

**Irrigation Systems
Pumping & Filtration
Effluent Dispersal
Water Management**

20 Winton Hedgehope Highway, Winton
03 236 9805 www.waterforce.co.nz
0800 4 FORCE (4 36723)

WESTERN ELECTRICAL

2008 LTD

Electrical Solutions

Domestic | Industrial | Commercial

Quality Service at Competitive Prices

- New Builds, Rewiring & Alterations
- Dairy Shed, Farm & Industrial Maintenance
- Hotwater Element Replacement
- A/H Call Out Service Provided



**Ph 03 225 8974 / 027 439 3787
Fax 03 225 8973**



Jacqui and Superior go the extra mile

Are you frustrated with the lack of service from your local fertiliser consultant, peddling the same advice year after year regardless of your production outcomes, environment and sustainability?

Give **Jacqui Chamberlain** of Superior Fertiliser Specialists a call. She will bring whole new meaning to service and client/advisor relationships.

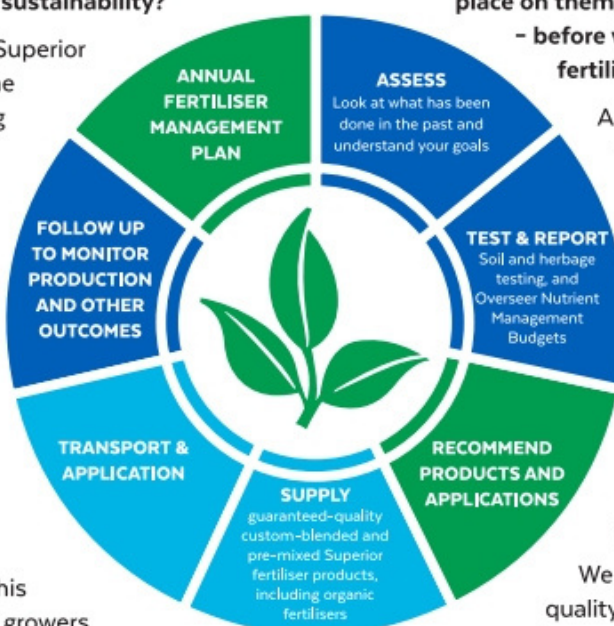
Jacqui is a key member of the highly skilled Superior team totally committed to helping you develop healthier, more productive soils and plants.

We form a specialist fertiliser company that provides high quality advice and products at competitive prices. We have been doing this for South Island farmers and growers for just on 20 years.

Superior promotes a total soil care package. First, we get to understand the make-up, nutrient status and health of your soils, the demands you are going to place on them, and your production goals – before we apply one kilogram of fertiliser.

A comprehensive regime of vigorous soil tests will be undertaken and the results will provide the basis of a Superior Fertiliser Management Plan customised for your unique situation. This will complement your farm's Environmental Plan and provide the blueprint for an ongoing annual fertiliser programme.

We then supply guaranteed-quality solid fertiliser for your pasture and crops, monitor production and other outcomes, and update your Plans as required.



It's free to talk so don't hesitate to give Jacqui a call.
Phone 027 202 0611

Jacqui Chamberlain
Fertiliser Advisor Southland
027 202 0611
jacqui@superior.net.nz



 FERTILISER SPECIALISTS
SUPERIOR
www.superior.net.nz

TUATAPERE SERVICE STATION

20 ORAWIA ROAD

PHONE: 03 2266475

FISHERMEN COME IN FOR A BROWSE WE HAVE IN STOCK

**Rods, reels, sinkers, hooks, lures, line, knives,
nets, waders, sawdust**



WE CAN PROCESS ALL YOUR REGISTRATIONS

ROAD USER CHARGES

CHANGE OF OWNERSHIPS

VEHICLE EXEMPTIONS

CANCELATION OF REGISTRATION

CHANGE OF HUBOMETERS

HARDWARE IN STOCK

**Nails, screws, tec screws, bolts and nuts, dyna bolts, pulleys,
karabiners, hinges, padlocks, rope, chain and much more**



OPENING HOURS

Monday to Friday 8.00am to 5.00pm