



WESTERN Wanderer

Colac Bay | Orepuki | Tuatapere | Clifden | Orawia | Blackmount | Monowai

Waiau A&P 82nd Annual Show

Sponsored by Pilkoburn Angus Stud & Waiau Hereford Stud

Saturday 13th February 2021

Waiau Domain - Elder Drive Tuatapere from 7.45am

Come along for a great family day out!

Home Cooked Meals in Pavilion, Good Mood Food Caravan, Fire Brigade BBQ & Mr Whippy

Kids Big Dig 3PM

Otautau Vets Terrier Race

After Grand Parade GREAT PRIZES!!

Western Fencing Bark Up

Junior & Senior Section GREAT PRIZES!! 3.30pm

Slug Gun & Paint Ball Shooting

LOLLY SCRAMBLE & MINI JEEPS

BOUNCY CASTLE - FREE

PRODUCE SECTION

Judging at 11am.

Produce Schedules available from Health & Gift Shop

Honey Bucket Café & Craft Shop

SOMETHING FOR EVERYONE

LOCALLY GROWN HONEY FOR SALE

Horse Events From 7.45am

Jumping Competitions From 11am

Miniature Horses

Donkeys

Sheep & Lamb Judging

Beef & Dairy Judging

GRAND PARADE 2PM

Led by the Waimatuku Pipe Band

Animal Farm Yard

11am-2pm

Sparks the Clown 11am-3pm

Licensed Bar From 2pm

Thanks to Waiau Star Rugby Club



ENTRY FEE: ADULTS \$5 & CHILDREN FREE!!!

FREE MINI JEEP RIDES FROM 11.30AM-2.30PM

Photo Credit: Tuatapere & Districts Promotions Inc

HANDY PHONE NUMBERS

EMERGENCY

POLICE /FIRE/AMBULANCE: 111



MEDICAL CENTRE:

(03) 2266 123

TUATAPERE COMMUNITY WORKER:

027 757 5983

HAUROKO VALLEY SCHOOL OFFICE:

(03) 2266 753

WAIU AREA SCHOOL OFFICE:

(03) 2266 285

TUATAPERE CEMETERY TRUST:

(03) 2266 065

CHAMBERS SERVICE STATION:

(03) 2266 654

TUATAPERE SERVICE STATION:

(03) 2266 475

TUATAPERE FOUR SQUARE:

(03) 2266 898

TUATAPERE OUTDOORS & HARDWARE:

(03) 2266 363

Special thanks to



WAIU AREA SCHOOL
Year 1-13 Education

Live to LEARN, LEARN to Live

for their support with the printing

Tuatapere & Districts Promotions Inc

Paula McKenzie, President

Happy New Year Western Wanderer Readers!

A huge thank you to The Promotions Team and the community in general for all your support in 2020. Without you, our various projects would never be completed.

John Timpany, Solid Wood Furnishings, you are a star!! The beautiful Xmas Tree that you created for us was far above our expectations. And of course the tree would not have been built at all without timber, which was kindly donated by Tuatapere Hardware and Placemakers Invercargill (thank you Jude for arranging this). And again, the tree wouldn't have looked anything without lights! A huge thank you to the team at Tui Base Camp for donating your power to the cause.

We were stoked to get the Xmas flags up on the flagtrax before Xmas (that was a bonus!) but unfortunately the refurbished Sausage Sign was lost in the Xmas rush. The Sign site has had a tidy up in anticipation of the new sign so that is something at least! It should be here soon ... keep an eye on that space!

The "Event" flags received very positive comments on Sports Day. Remember they are there for the community to use. Let us know if you have an event and would those flags flying!

The Southland Oral History Group is going to be running a Training Workshop this year. If you are interested in attending please contact me and I will put your name forward.

We are always interested in hearing new ideas and seeing new faces. We meet at the Waiau Town & Country Club, 3rd Thursday of the month at 7:30pm!



Clifden Playgroup Presents ...

MOONLIGHT CINEMA

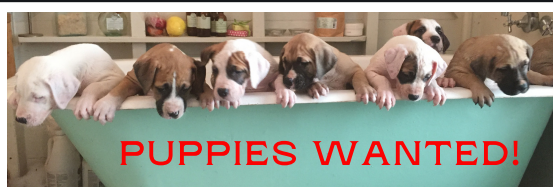
Drive in or BYO seat
Gates open 8pm
For tickets, Jaz- 0275017355
Or any Clifden playgroup

Park up and rug up for a unique outdoor cinematic experience.

Snacks & hot food available	Movie title to be confirmed	Tickets \$20
-----------------------------	-----------------------------	--------------

Saturday 27th of February - Tuatapere Domain
Gates open 8pm - Movie starts @ sunset - FM car radio required

COMMUNITY NOTICES & EVENTS



Puppies wanted desperately for the Animal Farmyard at the Waiau A&P Show on Saturday, 13th February.

Born around mid December.

The Animal Farmyard is open from 11am to 2pm on show day.

The puppies are in a pen and children are allowed in 2 or 3 at a time to sit on the hay and hug them. The children are strictly supervised at all times. The puppies are the highlight of the Animal Farmyard.

If you can help us please ring or text Chris on 027 308 0665

WANTED!

We need two strong, respectful young people, approximately 13 years or older to help with showjumping rails etc at **Waiau A&P Show on Saturday, 13th of February** from 10.30am to 4.30pm.



Please email **cabogers@gmail.com** with your details and phone number

82nd
WAIU A&P SHOW
Tuatapere Domain

Saturday 13th February 2021

\$5 entry fee for Adults Children are FREE

Waiau A&P Show - 13th February Pet Competition

No Entry Fees! Enter on the day by **12:15pm**
at the ASB yellow tent, Animal Farmyard.
Judging begins at 12:30pm at the Farmyard

Conditions of Entry

Animals are to be handled by
a person 18 years & under
No ponies, horses, calves, sheep or lambs
are eligible for this section as there are classes
for them in other sections at this show.

- Class 1 - Best Small Dog
- Class 2 - Best Large Dog
- Class 3 - Best Goat
- Class 4 - Best Caged Pet (not bird)
- Class 5 - Best Piglet
- Class 6 - Best Caged Bird
- Class 7 - Most Unusual Pet



Tuatapere Highland Piping and Dancing Society

Lisa McCracken, President



On Saturday 7th November the Tuatapere Highland Piping and Dancing Society successfully ran their 64th annual competition at the RSA Hall in Tuatapere. We were lucky to have 51 competitors, and a great day was had by all.

A highlight was the awarding of our new trophy, the **Val McKay Memorial** trophy, to the winner of the under 14 jig, Alex Glover from Garston.

Many thanks must go to our sponsors, Tuatapere Community Board and Clifden Rural Women, as well as to our society members for their contribution to help run the day smoothly. Finally, a big thanks must go to all our competitors, both local and from farther afield, for the support they showed to our local competitions!

(From the Western Wanderer: Our apologies for missing this notice in the December issue)

Tuatapere Toy Library



Last December we held a special meeting. At this meeting a new committee has been appointed. The new president being Nathalie Pahl, the new secretary being Jayne Ridley and the new treasurer being Lee Murray.

We would like to thank Rebecca Robertson, Heidi Berkelaar and especially Minessa Erskine for their years of volunteering to keep the Tuatapere Toy Library up and running.

We are still working on our plan to get the toy library moved into a new storage cabin at the back of the Medical Centre. We are actively fundraising and are not far off our goal. With two exciting fundraisers coming up we sure hope you will be joining in on the fun!

Come place a bet on the Great Tuatapere Rubber Duck Races on the 20th of February (check out our pull-out "Racing Guide" in the middle of this issue) and/or sing your heart out at our talent search the Tui X factor on the 28th of March down at the Waiau Town and Country Club!

A FUNDRAISER FOR
**HAUROKO VALLEY
PRIMARY SCHOOL**

BLACK MOUNTAIN TRAIL RIDE
SATURDAY 13TH MARCH 2021

Based at Belmont Station - Blackmount - Every ability catered for on 60km+ of track!

Registration opens 8am - first ride 9am - Lunch included in registration.

3pm The David Gray Memorial Hill Climb - Food and refreshments available all day (cash).

email blackmounttrailride@gmail.com - FB @blackmounttrailride www.myrides.co.nz

ADULT \$60
UNDER 15's \$40
MINI - \$15
FAMILY (1 ADULT + 2 UNDER 15'S) \$100
SIDE X SIDE OR ATV PASSENGER \$30

**BIG GRINS
GUARANTEED**

OWLE
CONTRACTING

TUATAPERE ELECTRICAL

ULTRA-SCAN

Country & Co
Savvy Living

H Gill Fencing
Eastern Bay

AON

RABCO

Darin Forde SHEARING

SOUTHERN WIDE

Massive thank you to our sponsors:

TUATAPERE MEMORIAL BURSARY TRUST

Applications are open!

Forms will be available for pick up from the local health and gift shop or by contacting

John Munro on **027 412 2925** until **March 30, 2021** when applications close.

TUATAPERE BOWLING CLUB

Birch Street (Next to the school)

The season is underway with both the Ladies and Men teams having some success.

Practice:

Ladies - Mondays

Men - Wednesdays
6:30pm

Games:

Ladies - Wednesdays

Mens - Saturdays

New players are welcome!

Call or email Secretary for more info

0204 152 2847 | tuataperebc@gmail.com

TUATAPERE SCOUTS

Are you and your family looking for something that will foster personal development, create a sense of community and at the same time challenge you or a school age member of your family?

Have you thought of joining Scouts?

At Scouts we have a Wednesday Programme:

- Keas for children 5-7 yrs; 3:30-4:30pm
- Cubs for children 7-9½ yrs; 4:30-5:30pm
- Scouts for 9½-15 yrs. 5:30-7:00pm

We also have a need for leaders so we can deliver our programmes effectively.

Contact:

Leader Anne-Marie **027 688 5828**

Group Leader Quinton **027 223 4842** or **(03) 226 6969**

SENIOR CITIZENS

Senior Citizens is a group of over 60s that meet every **Friday afternoon at 1pm** at the rooms behind the RSA Hall. We are always looking for new members so if you would like a fun afternoon playing bowls, cards or just catching up with friends, come and join the group.

Contact: Olive Bennett Ph **(03) 2266 477**

NEED A JP?



The following Justices are available by appointment:

Tuatapere

Keri Potter 027 526 3137

Donald Egerton 027 432 5407

Te Waewae Bay

Shirley Whyte 027 504 5220

Blackmount

Nicky Baker 0276435880

TUATAPERE & DISTRICTS LIONS CLUB PROJECT



SUPER DIRT

Super dirt bags are now weighed so more in each bag!

\$8 per bag - ready for your garden!

Super dirt can be collected from: Cracks Yard, Grove Burn Road, in the mornings Monday to Friday. Weekends by arrangement.

Delivery by arrangement - (but not guaranteed)

Phone Trevor (03) 225 5864 or Stephen (03) 226 6817



TUATAPERE COMMUNITY WORKER

Room 5 Medical Centre
69A Orawia Road

Monday - Thursday 10am to 3pm

Keri Potter **027 757 5983**

Email: tcworker@xtra.co.nz



WAIU MEMORIAL LIBRARY

Library Hours: Fridays

10:00am - 11:30am

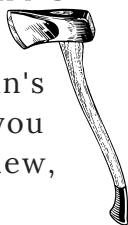
2:30pm - 4:00pm

7:00pm - 8:00pm



The Library now has Wi-Fi. Available free to all library members. Just ask one of our friendly volunteers to help you set up your device.

TUATAPERE BUSHMAN'S MUSEUM



Orawia Road. If the Bushman's Museum is not open when you have visitors who wish to view, you can contact:
Lindsay Faulkner (03) 226 6650 to arrange a suitable time.

TUATAPERE ENVELOPES

Envelopes printed with the "Tuatapere on Nature's Edge" Logo can be purchased at Country Corner Craft Shop
1A Orawia Road
Cost \$3.00 per 10



TUATAPERE MAINLY MUSIC

A pre-school music and movement-based playgroup.

Mondays during the school term at the Tuatapere Presbyterian Church Hall.

Music session starts at 10am followed by a time of morning tea and play. \$2 per family.

Morning tea is provided for all.

New families welcome!

Find us on Facebook:

"Tuatapere Mainly Music"



mainly music

For more information contact Heidi 022 315 3326

Get your car washed, dried and windows cleaned - Price arranged on request!

Contact: Rex Hibbs
Flat 1/26 Orawia Rd, Tuatapere

COMMUNITY NOTICEBOARD

TUATAPERE PRESBYTERIAN CHURCH MARKET DAY

The church market is held at 10am every 3rd Saturday of the month in the Tuatapere Presbyterian Church Hall, Main Rd, Tuatapere.

Market Day:

Saturday 19th February 2021

(Next Market Day: 20 March 2021)

All welcome! Come along & enjoy the opportunity for a cuppa & a chat and have a browse at the local crafts available.

If you would like a table for hire please text:

Tim Vanderpilj 027 716 6478

TUATAPERE PLAYCENTRE

23B Orawia Road. **Friday Playgroup 9am - 12pm**

All parents and children welcome!

Children's morning tea is a packed lunchbox from home at Playgroup (as opposed to a shared morning tea).

Any queries please contact:

Gemma Bennett 022 040 3368 Alice Harris 027 270 0363

CLIFDEN PLAYGROUP

45 Otahu Eastern Bush Road.

Every Wednesday (during School Term) 9:30am - 12:30pm.

All mothers and children welcome.

Bring packed lunchbox for your child's morning tea.

Any queries to: **Lynley Patterson 027 429 7436**

WAIU VALLEY PRESBYTERIAN CHURCH

Services for all ages! Every Sunday at 10.30am.

Tuatapere Presbyterian Church, Main Street, Tuatapere.

All welcome to join us. For information please contact:

Chris Howden Session Clerk 021 477 999

WESTERN SOUTHLAND WOOLCRAFT GROUP

Spinning, Felt, Weaving, Knitting, Crochet.

Other crafts welcome!

1st Wednesday of the month. 10am - 3pm. BYO Lunch.

For details please contact: **Helen Todd 022 378 9743**

WAI AU SQUASH CLUB

Our season is fast approaching we would love to get some new "younger" members for the 2021 season.

Great way to get a bit of exercise over the winter months, have some fun and meet some new people.

Women interclub Tuesday evening.

Men's interclub Thursday evening.

For more info please contact:

Nic Mitchell **021 815 531** or

Sam Egerton **027 2505 477**



AN UPDATE FROM WAI AU COMMUNITY THEATRE

Anne Horrell, President

Wai au Community Theatre is still alive and well, despite the fact that we decided to not stage a production in 2020. Following the Lockdown period our window of opportunity was very small and tended to coincide with other events and then, of course, lambing and calving.

However, we are keen to 'tread the boards' again this year and we are delighted to have fresh talent keen to join us! We welcome ALL-those with some dramatic experience and those with none! All it takes to be a part of our team is a love of theatre and a willingness to 'give it a go'!

On a sad note I am sorry to communicate that one of our Honorary Patrons – Malcolm Garrett- died recently in Motueka. Malcolm was a huge inspiration to many of us and his legacy lives on. We all feel for his lovely wife Betty – also an Honorary Patron - and we look forward to dedicating our 2021 production in memory of dear Malcolm.

If you would like to be a part of our Community Theatre team please contact me:

Anne Horrell **021 216 9808** or

our Secretary Sue Edgerton **022 164 1971**

TUATAPERE AMBULANCE

Did YOU Know?

The Tuatapere Ambulance is a funded service by the Tuatapere Lions Club, for the residents of Tuatapere & Districts.

Should you receive an account for this service from St John, please forward it immediately to:

The Treasurer

Tuatapere Lions Club

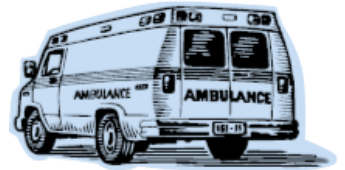
PO Box 47

Tuatapere

Sometimes we experience difficulty in receiving the invoices for YOUR trip - so PLEASE do forward them on to us.

Thank you!

**Tuatapere Lions Club Charitable Trust
Ambulance Committee**



WESTERN SOUTHLAND HEALTH SHUTTLE

The Western Southland Health Shuttle Service travels from Otautau, Ohai, Nightcaps, Tuatapere, Riverton - covering all of Western Southland. We also connect with the Invercargill-Dunedin shuttle.

The Western Southland Health Shuttle operates Monday - Friday (excluding Public Holidays).

Bookings are required by 3pm the day prior to transport.

Ph: 0800 103 046 to book.

Please book as soon as you receive your appointment.

TUATAPERE VOLUNTEER FIRE BRIGADE

We're on the lookout for members to join this rewarding organization. We are looking for persons who are, ideally, available throughout the day.

If you think that you would like to try this (sometimes lifelong) commitment, then please feel free to come and try it!

We train on Tuesday nights at 7:30pm during daylight saving and 7pm through the winter months.

We look forward to meeting with you.



LOST PROPERTY

Accidentally left at Chambers Repair Service, prior to Christmas, 1 item of clothing.

The person was sending away other items, but has left 1 item in a bag which they left behind.

If you think this was you, please call in to collect.

CHAMBERS REPAIR SERVICE

Change of Hours for Monday 15th February 2021

We will be opening at **9AM TILL 12PM** for NZ POST and FUEL SALES on Monday 15th Feb.

The workshop will be **CLOSED ALL DAY**

We will reopen as normal - 8am Tuesday 16th February.

Cheque withdrawal

With banks not accepting cheques by May 2021 and some business not accepting them now, we have decided to stop accepting cheques by 31st March 2021.

TUI 2 TOWN FREIGHT

As a lot of you know, we have sold our business. Brandon Harpur is taking over and we wish him all the best.

We would like to take this opportunity to thank all our clients. The last few years have flown by very quickly. So keep up the good work Brandon - have fun.

Thank you,
Eamon, Stephen and Shirley

PULL-OUT DIRECTORY OF LOCAL SERVICES, ORGANISATIONS & CLUBS UPDATE

We are currently updating the handy middle pull-out directory for our March Issue.

It was last updated June 2020 - so if you have become the contact person or you want to be the contact person for any local clubs/sports/organisations or you want to be added ... please let us know your details!

Email us at
yourwesternwanderer@gmail.com

OR drop us a note in the letterbox outside the Toy Library - 18 Orawia Rd, Tuatapere.



SALVATION ARMY FAMILY STORE TRUCK

The Salvation Army Family Store Truck will come out and collect large amounts of your pre-loved furniture & other household items. This service is free.

Please call the store to organise your visit on **03 214 5380**



TUATAPERE HEALTH & GIFT SHOP - Riverton Pharmacy

We now have two courier drops for prescriptions for our Tuatapere customers:

1:00pm and 4:45pm.

The Health & Gift Shop is open from 12:30pm - 5:30pm.

If we can help in any other way, please contact

Riverton Pharmacy **(03) 234 8515**



COUNTRY CORNER CRAFTS

Come in and browse and see what we have to offer. Hats, scarves, children's knitwear, cards, jewellery, woodware, sewing, jams, pickles, sauces, etc.

Tuatapere souvenirs "On Natures Edge" logo are always available.

Is anyone interested in joining to sell their crafts? You are more than welcome to contact us.

Want to volunteer your time & work in the Craft Centre - let us know! It's a great way to meet people!

If you wish to view the shop and it is closed, please ring

Louise Greber (03) 668 6001 or

Lyla Sherriff (03) 226 6187

and they will open it for you.

Christmas Parade 2020

John Munro

A HUUUUUGE thank you to EVERYONE who came out to enjoy our Christmas parade in Tuatapere back on the 23rd of December 2020 ... WOW it was just awesome !!

Even though the weather was not the best, we were given a window of opportunity to be able to have the parade in light drizzle instead of pounding rain! I had attended the Otautau Santa parade a few days before ours and there were a total of about 6 vehicles all together in their parade, that included two of mine! Our parade had close to 40 (the year before had 55!) made up of floats, cars, trucks, motorcycles, Ambulance, Police car and Fire Brigade, Steam punk, ponies and so much more! Now to me THAT shows us just how awesome our little town is - it may be small but it is BIG when it comes to this sort of fun!

From the awesome floats, to the polished cars, trucks and motorcycles in our parade, thank you all for taking the time. To the children on their bicycles and the folk who organized things to make everything work on the night - you are awesome! And last but not least Santa! Thank you Santa for taking time out of your busy schedule to come and enjoy our parade with us.

Christmas Parade Dec 23rd 2021!

I have had a visit from the Police and they have told me that the 2020 Parade was the last one we could hold on the streets of Tuatapere without submitting a several thousand dollar Traffic Management Plan, without which, we are not allow to block the road for the parade. So between the local Police and myself, we have come up with a very cost effective way to still have a great parade but without the cost and risk to anyone. Let's have this year's parade down in the Tuatapere Domain.

There will be all the room in the world to park, it's a great place in the ring for all the cars and the floats to park up after the parade so that people can go and admire their favourite parade participant. (There might even be a competition for the best one!) The Pavilion can be used for our older residents to sit and watch from the shelter and warmth of the pavilion, and there's plenty of space for the children to run around without risk of milk tankers and trucks, cars and the like going past on the main street. It is unfortunate that we can't keep the old ways going but I think if you give this new idea some thought, you will warm to it very quickly!

All the best for 2021!



TUATAPERE HANDYMAN SERVICES

Barry Bennett

(03) 226 6730

- **Painting - Interior/Exterior**
- **Waterblasting**
- **Carpet & Upholstery Cleaning**
- **Spider & Fly Spraying**
- **General Repair Work**
- **Lawnmowing**
- **Hedge Trimming**
- **Weeding**



Riverton Electrical Ltd

The Bright Green Sparks
Industrial, Commercial, Residential
 Member of Sustainable Electricity Assoc. of NZ Inc (SEANZ)

0274327215
 Email: rivertonelectrical@gmail.com
 Address: PO Box 10, Riverton 9847

Proud to support Western Southland - keeping it local!
Call today to discuss your energy needs for the home or business



Specialists in:
 Renewable Energy
 Energy audits
 Energy management
 Home ventilation
 Heat Transfer
 Dairy maintenance
 Effluent systems (Electrical)
 Preventative maintenance
 Freeview TV

GETTING TO KNOW ...

If you've driven down Papatotara Road recently, chances are you've seen him. Every day (except Mondays) he sits, across from the Settlement Road corner, waiting patiently and pointing.



He's pointing the way to Solid Furnishings, workshop and home to beautiful 12 year old Maisie the dog and her owner/master craftsman John Timpany. John's passion is using native timber to carve, shape or create anything from shapes to signs to the most amazing solid furniture.

You may have seen the wooden Christmas tree in one of the community gardens outside Tui Base Camp during December. John cleverly designed and created the tree for Tuatapere & Districts Promotions Inc and generously donated his time doing it!

Just in case you didn't know, John can make anything to your specifications or you can come out and browse his workshop and display area to see what's on offer or get some ideas for what might suit your needs.

Just give him a call on **022 046 1402** or pop in if you see the wooden man out pointing!



JOHN TIMPANY Craftsman

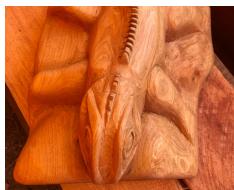
022 046 1402
7 Settlement Road
Papatotara
Tuatapere, Southland

Furniture
Native Timber & Timeless Design
Signs Carved & Shapes Shaped
Small Structures Erected

It is totally worth the drive out to Settlement Road and you will not be disappointed.

John's craftsmanship is amazing and of course native timber has its own beauty and appeal. The pictures speak for themselves!

Be sure to ask John about the carbon dated timber!





Diggin' in the Cabbage Patch

Perfect time to plant ...

Beetroot, broccoli, carrot, cabbage, cauliflower, kale, leek, lettuce, mesclun, onion, parsley, radish, rocket, silverbeet.

Are your vegetables looking great this year?

You might like to enter them in the 82nd Waiau A&P Show on 13 February 2021! There are 16 classes to for vegetables.

- Class 610: Three potatoes - white
- Class 611: Three potatoes - red
- Class 612: Three carrots - early
- Class 613: 1 Cauliflower
- Class 614: 1 Lettuce
- Class 615: 1 Cabbage
- Class 616: 1 Cucumber
- Class 617: 3 Tomatoes (leave stalk on)
- Class 618: Collections of Herbs (1 sprig of each)
- Class 619: Collection of Veges on a Tray (1 of each)
- Class 620: 3 Onions
- Class 621: 3 Pods of Peas
- Class 622: 3 Pods of Beans
- Class 623: 3 Beetroot
- Class 624: 3 Stalks of Rhubarb
- Class 625: Garlic

Don't forget the Skite's Corner section too!

Conditions of Entry

- Any articles previously exhibited at any Show are not eligible.
- All articles and garments must be unused.
- Entry fees:
Adults 50 cents per entry. Children 20 cents per entry.
- Entries close on the day, enquiries to:
Anne-Marie Erskine 03 226 6969
- Exhibitors are asked to supply their own containers and plates which should be clearly named.
- All entries must be bona fide property of an individual exhibitor.
THIS YEAR WE ARE TRIALLING in sections 1,2,3,5,6 & 7 an open section where children aged 5 - 15 years can enter the classes as detailed in the schedule. (So for example a child aged 10 can enter baking and will be judged in the open section not the adult section, points will be awarded to both sections separately.
- Entries are to be at the New Pavilion before 10:30am. Judging will take place at 11:00am and only authorised persons will be allowed into the Pavilion during this time.
- Prize giving will be at the New Pavilion at 3:00pm sharp. Entries may be removed after 3:30pm.
- Special prizes:
 - Most Points Overall - Silver Tray
 - Best Overall Exhibit - Buffalo Lodge Trophy
 - Best Exhibit for Kitchen Skills - Dorothy Muir Memorial Trophy

UNDER NEW OWNERSHIP

Tuatapere Freight

(formerly Tui 2 Town Freight)

RUNS MONDAY TO FRIDAY
WEEKENDS BY ARRANGEMENT

Phone Brandon

027 436 4360



Southland Community Law Centre

5 Tay Street, Invercargill

Phone: (03) 214 3180 Fax: (03) 214 3170

Freephone: 0800 550 800 (outside Invercargill city only)

**Free Legal Information
& Advice for the
Community of
Southland**



Tea-Tree Oil Products

Non-toxic, healthier choices,
eco-sense and "affordable".
(Botanical name Melaleuca)

Please phone Imelda (03) 226 6665 or
email: pelmels@es.co.nz



SIMPLY SOOTHING

Soft tissue pain and tension release

ANN SUTHERLAND

Certified Bowen Practitioner

2475 Ohai-Clifden H/way
Orawia R.D. 2
Southland 9682

phone 03 225 5716
Fax 03 225 5716

Bowen Therapy is a gentle soft tissue manipulative therapy. Through manipulation, tension in soft tissue is released reducing pain and restoring movement and mobility. Also offering Scenar Therapy.



If your 2021 New Year's resolution was to promote healthy eating you must try these kumara, chickpea & mushroom burgers. They are packed full of flavour and will please any burger lover.

Kumara, Chickpea & Mushrooms Burgers

Ingredients

- 300g red kumara, peeled and diced
- 2 tablespoons olive oil
- 250g mushrooms, stalks removed and diced
- 1 onion, finely chopped
- 1 tablespoon curry powder
- 1 teaspoon ground cumin
- Zest of 1 lemon
- 400g can chickpeas, rinsed and drained
- $\frac{3}{4}$ cup breadcrumbs
- 1 egg
- $\frac{3}{4}$ teaspoon salt
- $\frac{1}{3}$ cup finely chopped parsley

Method

Cook kumara in boiling salted water for about 10 minutes. Drain well, tip back into pot and place over low heat to dry off for a few minutes.



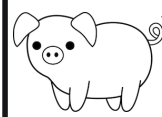
Heat oil in a large fry pan. Cook mushrooms and onion, with a good pinch of salt, until soft and all the moisture in the pan has evaporated. Add another drizzle of oil, garlic, curry powder, cumin and lemon zest. Cook for 1 minute.

Add mushroom mixture to the pot of kumara, along with chickpeas, breadcrumbs, egg, salt, and herbs. Use a potato masher and mash together.

Divide and roll mixture into six patties. Place in the fridge to firm up a little while.

Oil each patty and cook on the barbecue or a large fry pan. Cook until golden brown.

To serve, assemble your burgers with all your favourite fillings. Enjoy!



PIGLET'S FOR SALE
PORKERS/BACONERS FOR SALE
READY NOW
PLEASE PH: (03) 2266577

WANTED TO BUY

Possum Fur, Hard deer,
Antler, Deer Velvet.
Phone Leith 027 496 3721

CHAINSAW SHARPENING

All chainsaw chain sizes precisely sharpened and rakers taken down accordingly, guaranteed results
Chain only \$10 Taken Off & Refitted \$13
Please phone (03) 2266940 evenings

Shirley Whyte

Your local real estate specialist living & working in Western Southland



for: Friendly service, reliability,
sound local knowledge in
Western Southland,
Te Anau & Stewart Island

Harcourts



M 027 504 5220 O 03 214 4080

E shirley@harcourtslnv.co.nz

W www.harcourts.co.nz

Sewing and Mending Services Available

Experienced machinist offering fast, reliable service with very reasonable rates.

I will mend/make anything from zip replacements to curtain making - just ask!

Free quotes and pick-up delivery service within Tuatapere.



Contact **Deborah**
(03) 226 6783 or 021 0305 667



GREAT FREIGHT RATES

**Same Day
Door to Door
Monday - Friday**

**General Light
Freight Service
No Rural Surcharge**



- Fresh & Chilled Freight
- Meat & Vegetables
- Flowers & Chocolate
- Bottled Milk
- Prescriptions
- Vet Supplies
- Ag. & Vehicle Parts
- Hardware
- Oil & Lube
- Ammo & Chemicals

**Invercargill - Winton - Drummond - Otautau
- Tuatapere - Ohai/Nightcaps - Riverton**

027 340 5845

bulletcourier8@gmail.com

bulletcourier.org

Can you sing? Can you dance? Do you have a special talent you want to show us? If you think you have the X-Factor WE WANT TO SEE YOU!

Enter as a group, a couple or individually. We want to see people of all ages!

Competition date is Sunday 28th March 2021

Loads of awesome prizes! And the title of TUI X FACTOR CHAMPION!

\$5 entry fee per person

Keep an eye on the Tuatapere Toy Library Facebook page & the Waiau Town & Country Club Facebook page for updates on this exciting fundraising event for the Tuatapere Toy Library!



MR STEEL

TUATAPERE

PH: 027 276 6816

MALCOLM

**For all your engineering,
steel fabrication and repair needs!**

Painting & Handyman Services

Experienced Painter

I can help with all sorts of odd jobs too!

Gardening
Lawn mowing
Tree & Hedge Trimming
General labouring



Phone **Luke Wikstrom** 027 2773 925



**BEN MCMASTER
BUILDING**

Ph: 027 202 7955
benmcmaster@live.com

- Licensed Building Practitioner
- Sheds, renovations & new homes
- Based in Western Southland

You dream it, we'll build it

Shearing
magazine

Des Williams (editor)

Tel 07 839 2891 : Mob 0274 833 465

Email : shearingmag@xtra.co.nz

Member NZ Guild of Agricultural Journalists and Communicators (Inc)

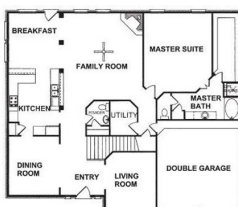
LAST SIDE PUBLISHING LTD

PO Box 102, Hamilton 3240, New Zealand

PAUL ANDERSON BUILDER

AVAILABLE FOR ALL YOUR
BUILDING REQUIREMENTS.

NO JOB TOO SMALL.
COMPETITIVE RATES.
REFERENCES AVAILABLE!



Mobile: 027 890 3602

thetakis@outlook.com

Walking the Humpridge Track??

**Book 1 night before and get
1 night FREE after you walk
the track**



"The Cliffs"
Sea Side Lodge Motels

**03 226 6066 or
027 390 3117**

Chaplain's Chat

David Duthie



Turning the page on the calendar at the end of the year is like coming to the end of a book in a multi volume series. You know one part of the story has finished but that there are many more pages of drama and adventure ahead. In the story of life we get to be both reader and writer. As we enter into 2021 I trust that the story you write is one that you would like to read again and tell others about. If you're like me though you may have little idea of what words will appear on the pages.

This will be my last Chaplain's Chat as my employment with the church has come to an end. What lies ahead is uncertain (although by the time you read this hopefully things will be a little clearer!) We certainly have a lot of writing to do as we construct our next volume. This makes for both a daunting and, in faith, we are trusting for a new, hope filled time ahead.

However, we are not alone in facing the new and uncertain. We all face transitions many times in our lives. Each change has its own process involving grief, loss, acceptance and the hope of new beginnings. Often we are not well prepared for these changes, but there is always a way forward – even if the path ahead is not immediately clear. We can learn from the journeys of those who have gone before us, develop our own style; travelling alone and with others in our communities at different times.

We are doing all of that. It's not always easy – growth rarely is, but we can continue to trust in the goodness of God. A lesson I learned some time ago is that God's goodness is not determined by my circumstances. We can be sure that nothing has been wasted and that good can lie ahead for us all.

We are grateful for our time here and have enjoyed our season in Tuatapere. The natural environment has a rare beauty and many wonderful people make up the community here. We have been privileged to be a part of it, even if just for a short while.

As we all embark on this new year may you write your next chapters well; grieve your losses, celebrate your successes, be grateful for much and regret little, treasuring those you are privileged to share life with.

For further information regarding the church and its ministries please refer to Chris Howden 03 225 5161 or email: waiauvalleyparish@gmail.com

If people would like to stay in touch with Kendal and I my number is 027 416 0659 or email: duthie04@gmail.com
Blessings to you all.




FOR SALE

To learn more

COMPOST
Get it in your garden!

- \$50/CUBIC METER
- MADE FROM COWS MANURE&SAWDUST
- PICK UP SCOTTS GAP OR
- DELIVERY AVAILABLE

TEXT/RING 0278954878



FORDE SHEARING LIMITED
Available for all new and existing clients

For all your shearing and
crutching requirements
Please phone Darin or Julie Forde
(03) 235 8853
027 229 7760

**RAW FARM HOMEKILL**

Wayne & Rachel Saunders **027 457 6350**
Qualified Butcher

rawfarming@yahoo.co.nz 82 Clifden Highway
Tuatapere


Cut up the way you want
Beef
Pork
Sheep
Venison
Other game meats
Traditional Smallgoods



Registered **ELECTRICIAN**

For all electrical work
No job to small
A/Hours service available

Jay Brownlee
8 Carlyle Street, Tuatapere 9620
A/H 03 226 6673
Mob 027 4965 863
sparkieintuatapere@gmail.com



TUATAPERE TE WAEWAE *Community Board*

Margaret Thomas, Board Chair

Welcome to the new year, 2021. I wonder what it will bring. The COVID-19 pandemic is still with us, sometimes our weather is ok, the gardens are all growing, farmers are producing milk and meat on their farms and fruit vegetable and flower growers are battling wet and hailstorms.

The New Years Day Athletic sports attracted a good crowd despite the weather. Congratulations to all the competitors. Thank you to all the volunteers who helped make the day a success.

The annual Christmas Parade looked wonderful. Kids everywhere. Santa made an appearance. Once again thanks to all the volunteers. Thanks to John Timpany for creating the wonderful wooden Christmas tree that was on display and all covered in lights, outside the Tui Base Camp in one of the community board gardens.

I hope most of you noticed the new Christmas Pole Banners blowing in the breeze. These were funded by Tuatapere Promotions and the Tuatapere Te Waewae Community Board. Perhaps your sports club or organisation might like to purchase some banners.

My thanks to the Tuatapere Community Worker Keri for organising a wonderful Christmas Dinner for members of our community. It was open to everyone. Once again, a team of volunteers helped make this event so successful. Thank you to Waiau Area School for providing the venue.

Monkey Island has been a great place for families and tourists to camp over the summer. The new toilets are up and running. A start has been made on the landscaping. The Clifden Historic Swing Bridge has been another popular place to stop at.

I would like to encourage you to explore our area. We have short and long walks around the town, bush walks, lakes and rivers to visit and fish, playgrounds for kids including the new flying fox at the Jack and Mattie Bennett Playground. Power stations and water races, magnificent coastal beaches, and swimming pools, caves and limestone formations, golf courses and sports clubs, community garden and heritage orchards to name a few. Have you noticed the beautiful Rata Trees that are flowering?

Look out for each other, check on a neighbour, phone a friend, and drive safely.

MILLARS
- PLUMBING
- GAS FITTING
- DRAINLAYING
- LICENSED BUILDER
Master Plumbers
Ph 027 4340 705 or 03 225 8567

Aaron Cranston Building Ltd
027 252 7933
Renovations
Extensions
New Builds
Sheds/Farm buildings
Decks
Pre-purchase house
Inspections
Call us for any building requirements
Ph 027 252 7933 email: aaroncbld@gmail.com



Pioneer Families of the Waiau Valley

DIACK William of Clifden

Wife's maiden name and first names: Margaret Dennison

Location Settled:

Date of Arrival: 1918

Origin: Came from Woodlands to take up property at Clifden. William's parents (Alexander and May Diack) came from Centre Bush in 1920 to join them in the farm next door. They had six sons and six daughters!

Occupation on Arrival: Farmer of sheep and cattle

Descendants:

1. Margaret Ellen Diack
2. **William John Diack** married Thelma Isabel Williams (10 chn)
3. Mary Grant Diack

William (Bill) and Thelma's Descendants

1. John William b. 1938 m. Daphne Plunkett (Chn Julie, Ewan)
2. Francis Charles b. 1941 m. Theresa Valli (chn -Patricia, Steven -)
3. George Arthur b. 1942 m. Barbara Eason (chn -Brendon, Karl and Nigel, Rochelle)
4. Thelma Agnes b. 1944 m. Hugh Mitchell (chn Gavin, Alec, Stuart)
5. Norman James b. 1946 m. Irene Templeton (5 sons Trevor, Daryl, Andrew, James -)
6. Isabel Margaret b. 1948 m. Owen Schultz (chn Edward, Michael)
7. Stanley Allan b. 1950 m. Rosemary Moore (chn 2 d, 2 sons)
8. Melvin Ernest b. 1952
9. Marjorie Ellen b. 1955 m. 1. Robert McMillan 2. Paul Mills 3. Douglas Famliton (chn 3 d, 2 s)
10. Robert Wilson b. 1959 m. Carol Cross (chn William John)

It is noted that every one who had the farm before Bill Diack, went bankrupt! Also worth mentioning that the next door neighbour for many years was Dr McIntosh (1918 onwards)

Special thanks to Malcolm Garrett for these records (and many thanks to Margaret Thomas who gave us access to them so that we can share them with you). We were saddened to hear of Malcolm's recent passing and extend our condolences to his family & friends.

We hope you enjoy this special feature!

MOUNTAINS EDGE CABINS MONOWAI



Hunting, Fishing, Mountain Biking,
Kayaking & Tramping
Cabin Accommodation

12 Cabins
Double and Single Available
\$35.00 per person per night

Eftpos available

Full Kitchen Facilities, Showers, Toilets, Playground
& the Tennis Courts right across the road!

We are 'pet friendly'

www.mountainedgescabins.com
Email: mountainedgescabins@gmail.com

75 Turbine Drive, Monowai. Ph. 03 225 8267



* 13 Tonne Digger * 5.5 Tonne Digger * 2.7 Tonne Digger- dry hire or operated
* Tip Truck * Bob Cat * Augers * Post Driver * Tree Saw & Hedge Trimmer

* Tree Trimming * Post Driving * Fencing * Cleaning of Wintering Sheds * Site
Clearance * Cartage * Gravelling * Lane Maintenance * General Earthworks

For all enquiries and bookings please contact Lance or Alice Harris

Lance: 027 304 3714

Alice: 027 270 0363

Email: lanceharris533@gmail.com

Check us out on facebook- Harry's Machines

WAIAU VALLEY SHEARING LTD



Simon de Vries
Julie Heaps

027 840 9867
03 226 6212

Tutapere Amenities Trust

The Tutapere Amenities Trust meets each year to consider applications for funding submitted by local organisations for projects they are undertaking.

The Trust wish to announce the successful applicant for the 2020 year:

Tuatapere & Districts Promotions Inc: \$4,000.00

Since 2000-2001 organisations in the Tuatapere district have benefited from successful grant applications totalling **\$671,284.00**

Over the years the main grants are as follows:

**Tuatapere Hump Track Charitable Trust
and Tutapere Hump Track Ltd \$105, 480.00**

**Tuatapere Community Medical Services Trust
and Waiau Health Trust Ltd \$113, 288.00**

**Tuatapere Community Baths Society Ltd
\$114, 430.00**

\$338, 198.00

Other Organisations \$338, 086.00

TOTAL GRANTS \$671, 284.00

2021 funding applications to the Amenities Trust are now open!

Application forms are available now and these may be collected from

- Tuatapere Service Station
- Chambers Garage
- Tuatapere Outdoors and Hardware

Completed application forms need to be submitted by **30th April 2021**.

The Trust wish to remind applicants that funding for wages, administration and operational costs or retrospective funding will not be granted.



Mackenzie Brown
SHEEP CONTRACTOR

Crutching
Tailing
Sheep Conveyor

Sheep Conveyor

Drenching
Ear Tagging
Capsules
Vaccinating
Pour on
2 way draft

Mackenzie
027 9638318

Tui Base Camp



Extended Summer Hours!

**Open from 7am
every day!**

**For all of your dine in and takeaway
requirements including:**

In house roasted Amore Coffee

In house made pies, sausage rolls,
cheese rolls

Range of breakfast options

Packed lunches

Catering

Phone: (03) 226 6250

www.tuibasecamp.co.nz





SMOKING HOT... SUMMER SPECIALS



\$15.99
EACH

Jim Beam Gold
CC Premium
7% 330ml 6pk cans



\$18.99
EACH

Not Stocked

Woodstock 5% 330ml 10pk (inc zero) cans



\$19.99
EACH

Tui Bourbon; Vodka Soda
7% 12 pk range



\$20.99
EACH

Cruiser
12pk bottle range



\$20.99
EACH

Jim Beam & Cola/CC
(incl zero) 4.8% 10pk cans



\$21.99
EACH

Blackheart
5% 12pk bottles



\$22.99
EACH

Long White Vodka / Gin
10pk can range



Not Stocked

ODD Company
10pk cans



\$24.99
EACH

Effen Vodka
Jim Beam & Cola/CC
10pk bottle ranges



Not Stocked

Part Time Rangers
10pk cans



\$25.99
EACH

Gordons G&T, Gin & Soda
(pink/sicilian) 12pk 250ml cans



\$29.99
EACH

Cody's / KGB 7% cans
Woodstock 5% bottles
all 18pks



\$31.99
EACH

Woodstock
7% 250ml 18pk cans



\$12.99
EACH

Not Stocked

Stor 12pk range



\$12.99
EACH

Not Stocked

V 12pk range



\$13.99
EACH

Not Stocked

Bin 12pk range



\$13.99
EACH

Lindauer Classic & Enlighten
ranges (ex reserve)



\$18.99
EACH

Not Stocked

All 12pk range



\$34.99
EACH

Larios 1L
JB Black 700ml
Midori 700ml



\$34.99
EACH

Malibu/ Kahlua
(incl salt caramel) 1L



\$36.99
EACH

Teachers 1L



\$38.99
EACH

Jack Daniels
(incl Honey, Fire & Apple)
Old Forester all 700ml



\$38.99
EACH

Gordons Pink/Sicilian
Lemon 700ml
Gordons & Smirnoff 1L



\$39.99
EACH

Absolut/Ballantines
Beefeater 1L
Beefeater 24 700ml



\$45.99
EACH

Jim Beam 1125ml
JB Devils Cut & JB Black 1L
Makers Mark 700mls



\$49.99
EACH

Malfy 700ml range
Jameson 1L



\$49.99
EACH

Chivas Regal 12yr \$49.99
Chivas Regal 15yr \$73.99
Chivas Regal 18yr \$89.99
all 700ml



Two for \$7.50

Not Stocked

300ml bottles



\$19.99
EACH

Not Stocked

KINGFISHER 12pk bottle range



\$22.99
EACH

Somersby
12pk bottle range



\$23.99
EACH

Club Setter Seltzers
10pk cans



\$24.99
EACH

Monteiths Batch
Brewed & Cider
(ex classics range) 12pk range



\$24.99
EACH

Not Stocked

Peroni 12pk bottles



\$25.99
EACH

Tui/Export Gold/DB Draught
15pk bottles



\$26.99
EACH

Heineken
12pk bottles



\$27.99
EACH

Export 33
15pk bottles



\$28.99
EACH

Corona
12pk bottles



\$29.99
EACH

Not Stocked

Haagen
24pk bottles



\$36.99
EACH

Lion Red / Waikato / Speights
Summit or Low Carb
24pk bottles



\$40.99
EACH

Not Stocked

Asahi
24pk bottles



100%
NEW ZEALAND
thirstyliquor.co.nz



FOLLOW US ON
SOCIAL MEDIA



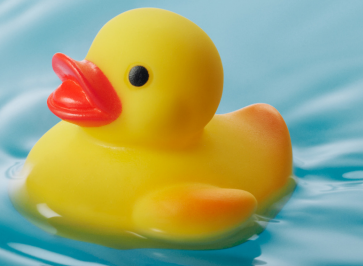
ASK ABOUT
LOYALTY CARD
BENEFITS &
GIFT VOUCHERS



Available from 1st to 28th February 2021. Specials only available whilst stocks last. At participating stores.

THE GREAT TUATAPERE Rubber Duck Races!

SATURDAY 20 FEBRUARY 2021



Join us down at Boundary Creek, King Street Bridge for the Tuatapere Toy Library Fundraiser!

10 Races + the Grand Finale Bridge to Bridge Chase!

Bet on your favourite rubber ducks in each race!

Betting Booth opens at 10:30am. Bets close 5 minutes before each race.



will be
on site!

SAUSAGE SIZZLE!

Dress to Impress!
Show us your fascinator!

BOUNCY CASTLE!

Bring a chair and
make a day of it!
Remember your sunscreen!
Bring your own beverages.



RACE 1: 11:00am

- 1 Abby
- 2 Shay
- 3 Mcrod
- 4 Richie
- 5 Francis
- 6 John
- 7 Lyn
- 8 Alfie
- 9 Nelly
- 10 Archie



RACE 2: 11:20am

- 1 Turbo
- 2 Explorer
- 3 Adventurer
- 4 Swiftly
- 5 Speedy
- 6 Devil
- 7 Oosty
- 8 Dancer
- 9 Gambler
- 10 Sasquatch



RACE 3: 11:40am

- 1 Charlie
- 2 Mrs Four Square
- 3 Della Duck
- 4 Value Spaghetti
- 5 Donald
- 6 Chicken
- 7 Where's the Eggs?
- 8 Not a Duck
- 9 Squeak
- 10 Super Quack



RACE 4: 12:00pm

- 1 Lord Maurice of Tui
- 2 Clifden "PITSTOP"
- 3 Bob S
- 4 Rainbow Stud
- 5 Tui Base Camp
- 6 Kevin of Bluecliffs
- 7 Orepuki T
- 8 LLL
- 9 Shawn K
- 10 R and T's



Jay Brownlee



Registered
ELECTRICIAN

RACE 5: 12:20pm

- 1 Fletcher Duck
- 2 Sadie Duck
- 3 Roast Duck
- 4 Rubber Duck
- 5 Peking Duck
- 6 What the Duck
- 7 Donald Duck
- 8 Daisy Duck
- 9 Daffy Duck
- 10 Scrooge McDuck

**RACE 6: 12:40pm**

- 1 Daggy
- 2 Willie
- 3 Racey
- 4 Eweno
- 5 Lambbeano
- 6 Magdag
- 7 Dodger
- 8 Swamp
- 9 Cutter
- 10 Trailer Duck

**RACE 7: 1:00pm**

- 1 Old Sparrow
- 2 Old Sparrow's Misses
- 3 Hayden the Master
- 4 Jimmy Thunder
- 5 The Nookster
- 6 Shorty Long Legs
- 7 Raydog
- 8 Boogie Woogie Doogie
- 9 Doogies Lad
- 10 Off the Rails

**RACE 8: 1:20pm**

- 1 Sticky
- 2 Twiggy
- 3 Barky
- 4 Branchy
- 5 Rimu
- 6 Beachy
- 7 Matai
- 8 Sawdust
- 9 Splitter
- 10 Re-Tired Duck

**RACE 9: 1:40pm**

- 1 Quirky
- 2 Ruffles
- 3 Quacker
- 4 Doesn't no
- 5 Bill Q Quack
- 6 Zumma
- 7 SeDUCKtive
- 8 Goose
- 9 Eggspresso
- 10 Splash

**RACE 10: 2:00pm**

- 1 Takitimu
- 2 Kollat Special
- 3 Roast Beef n Mustard
- 4 Merlot Pepper
- 5 Blue Cheese
- 6 Herb n Garlic
- 7 Tui Veni
- 8 Original
- 9 Jimmy
- 10 Sausage

**LAST RACE: GRAND FINALE : BRIDGE TO BRIDGE CHASE : 2:20pm**

The winning ducks will battle it out for
The Great Tuatapere Rubber Duck Race Champion's Cup!





Agricultural Contractors servicing Western Southland and beyond.

BALAGE - SILAGE - GROUNDWORK - FEED TRADING
Nigel 021 226 6156 / fowlecontracting@gmail.com

Waiau Town & Country Club

**Evening meals (homemade goodness)
available Thurs, Fri, Sat & Sun
evenings from 5pm to 9pm.**

Kid's menu.

Please pre book for groups of 8 or more.

Club Opening Hours:

Mon - Thurs 4pm till close.

Fri 3pm - close.

Sat 12pm - close.

Sun 3pm - close.

Functions/Events/Meetings/Birthdays/
We can cater! Just call to book,
ask for Gary to discuss your options.

Upcoming Events:

*** Valentine's Day** - Sunday 14th Feb
Set Menu \$60pp - **BOOK NOW!**

***Sunday Fundays** - keep an eye on our facebook
page for upcoming dates - Bouncy Castle & more.

*** Wood Chopping Event** - Saturday 27th Feb
come check it out, food available all day.

*** St. Patrick's Weekend Celebrations**
Saturday 20th March - LIVE BAND/TRIPLE SHOT!

*** St. Patrick's Weekend Celebrations**
Sun 21st March - Potato in a bucket from 3pm &
the Bouncy Castle.

*** TUI X-FACTOR** - Saturday 28th March
Show us your talent, there will be prizes,
enter now!

*** MEMBERS DRAW & RAFFLES**
drawn every Friday night! Approx. 7.30-8.30pm.

**Keep an eye on our Facebook Page for
more details on upcoming events**

Annual membership/subscription

Annual membership is \$50 or \$30 for pensioners.
Want to become a member, pop into the club & sign up!
Or email or call us.

Phone: 03 22 66 489

Address: 41 King St Tuatapere

Email: waiautcc@gmail.com

Facebook: facebook.com/waiautcc

Courtesy Van Available

We look forward to seeing you!

Looking for Books, Photos and People

Lloyd Esler, Historian

Hi Western Wanderer readers!

My most recent book,

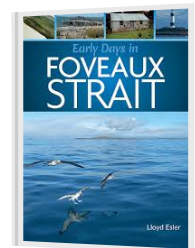
Early Days in Foveaux Strait

has been published. It is available from me and
outlets such as Te Hikoi, Paper Plus Invercargill,
Bluff Service Centre and Windsor Stationery.
It is the story of the settlement of Foveaux Strait
up to about 1865.

One of my current projects is a short history of
the Lower Waiau which is the Waiau catchment
downstream from Lake Manapouri, and including
Te Waewae Bay from Orepuki to Sandhill Point.
I'm looking at the early schools, platinum, gold,
shale, farming, roads, floods, Lake Hauroko road,
fishing, the impact of the hydro project,
limestone, cement works, sawmills, ferries, and
life in general in and around the river, especially
in pioneering days.

I would like to locate books on Papatotara, Clifden,
Blackmount, Orepuki and other localities within
my area of interest, as well as early photos, and I
would like the opportunity to talk to people about
their experiences. I can be contacted at
03 213 0404 or esler@southnet.co.nz

Thank you very much.





C: 0274 247 102
T: 03 225 8652
E: admin@drakeplumbing.co.nz

KIERAN DRAKE
Certifying Plumber
& Drainlayer

For all your Accounting and Tax Solutions

Ask for Janice or Trevor England

 **03 2266110**

Aparima Accounting Ltd
57 Main Road Tuatapere



CONTACT US TODAY

Phone 03 221 7192

Fax 03 221 7194



- Excavators for general farmwork
- Laser guided drainage
- Gorse mulching & land clearing
- Lane maintenance
- Conversions
- Effluent Ponds
- Demolition
- 20 tonne bulldozer, roller, grader
- Drain ploughing & alkathene laying

Bucket Honey Cafe

We have

- HONEY
- Great Coffee
- Homemade Pies
- Juice Bar
- Sandwich Bar
- Homemade Icecream

Come in and try our honey!

*Phone: (03) 208-3542
16 Orawia Road, Tuatapere*



CHAMBERS REPAIR SERVICE

45 Half Mile Road, Tuatapere

Ph: (03) 226 6654

- 24 hour Self Service Fuel
- Full Mechanical Workshop
- Agents for Wide Span Garage
- NZ Post Centre
- Your Local Fish & Game Agent

Change of Hours:

We will be opening at 9am till 12pm
for NZ POST & FUEL SALES on
Monday 15th February.

The workshop will be
CLOSED ALL DAY

Reopen 8am Tuesday 16th Feb.

Cheque withdrawal:

With banks not accepting cheques by
May 2021 and some business not
accepting them now, we have
decided to stop accepting cheques by
31st March 2021.

**YOUR BUSINESS CARD
COULD BE HERE!**

CONTACT

yourwesternwanderer@gmail.com

FOR PRICING/DETAILS

**PLATE
METER SERVICES**

PASTURE METER READING THAT'S QUICKER
AND EASIER, WITH AT THE GATE REPORTS

TROUGH CLEANING SERVICES

- Specialist in quality pasture meter reading with advanced sensor technology
- Provide 200 measurements per second or 18,500 readings over a single 500m pass
- Provides a fully integrated electronic support system
- Provides a secure web-based storage of information with easy access
- Prompt generated feed wedges for rapid decision making and seasonal comparisons
- Generate reports at the gate, supplying valuable pasture cover data and comparable results every time
- Improve heath & increase animal hydration
- Enhance production & improve water quality
- Reduce bacterial/algae contamination of trough water

**CLEAN TROUGH WATER MEANS
IMPROVED LIVESTOCK HEALTH**

Now 2 bikes
available
for pasture
metering



Brett George • P 027 351 3408  
E platemeterservices@gmail.com

**SOUTHLAND
DISTRICT COUNCIL**
Te Rohe Potae o Murihiku



George Harpur, SDC Councillor, Waiau Aparima Ward

Hi to all and welcome to 2021 and the first report for the year. Weather has been a little dubious with a few fine days to remind us that it is summer and then back to its old habits. However I trust you all had a great festive season and made the most of the New Year period, and I take this opportunity to thank all those who provided food and entertainment for locals and our visitors. The New Years Day sports were once again marred by poor weather and competition from other events close to home; nevertheless they carried on and had a reasonable day thanks to the large number of visiting axe men and women who participated in the wood chopping arena. This event is in urgent need of volunteers to run this day and without new personnel its future may well be in jeopardy. Maybe time to front up people as many of the current crop of volunteers are not of much future use due to age and rusty joints and I take this opportunity to thank them all for their effort and time over the many years and generations.

On the council scene the roading team have had an interesting time with extreme flooding in some areas in the local river headwaters and many washouts and gouging of road edges, then along comes a week of hot weather and lifting seal, interesting times indeed.

On the local scene we have had a good share of visitors in and around the area with many praising our facilities, the great service they have received and the neatness of our town, great stuff guys as many of these people do not come from far away but have traditionally tended to travel north. Their word of mouth promotion is invaluable.

I like many others share a great confidence in the future of this region, the Hump Ridge Track and the Wairaurahiri River lead the attractions followed by many others too numerous to mention. They all employ people providing much needed income for the area. The SDC and your local Community Board are actively seeking more ideas and funding for future projects in and around the region. Many of these projects can only be made possible by the support and cooperation of the local population.

I leave you with these thoughts and wish you all a happy and prosperous 2021.

Ratty Says ...

Waiau Memorial Library



Hello! Walter T Rat here!

I had a really cool Christmas, I hope you did too.

I spent Christmas with Tori, we had soooo much fun, I almost didn't want to go back to the Library.

Did you know that the A & P Show is coming soon? I had a really great time last year! This year I'm making some things to go in the Produce part of the show. I'm very excited. I'm going to be so busy making things, taking photos and I might even bake something. I hope lots of you enter this year, it would be great to see what you can make too.



I've been busy helping to cover books. It took awhile because I kept getting sticky stuff all over me. The books are down at the library waiting to be borrowed.

Walter

by Tori Egerton, age 7

Walter loves cooking with me, we decorated a gingerbread Santa and he loved doing that and he loved eating it too. After making our Santa we watched TV. It was time for dinner so we had some spaghetti on toast and our pudding was our Santa made earlier, it was very good.

When we were watching TV we watched the Hunting and Fishing Show, it was cool! When I went to bed I read a story to Walter. In the morning, we have an Elf on the Shelf, and he was sleeping with Walter.

DTKINGS TRANSPORT LTD

D T KINGS TRANSPORT LTD, is a leading transport company in Western Southland.

**We require BULK SOWER OPERATORS
for our modern units based at
Pukemaori and Tuatapere.**

Applicants for this position would have a **minimum class 2 licence** but a 4 or 5 licence would be advantageous.

Payment options available to obtain a class 2 licence (conditions apply).

You may have had some tractor / truck driving off road experience and want to further your interest in heavy transport. We are happy to help you into this position.

If you are reliable, have a can do attitude and think you would be able to operate a bulk sower, then we have a position for you with good remuneration and allowances dependent on relevant experience. Also you can join our free medical insurance scheme.

D T Kings transport operates under a drug and alcohol free policy. The successful applicant will need to pass a pre-employment test and a pre-employment medical exam.

For more information confidentially, on this position email or call
Paul Williamson (03) 225 5899
careers@dtking.co.nz

CANTERBURY CARS **4WD** Specialists

For all your vehicle requirements

Cars, utes, 4WDs, vans

Finance available

**Contact: Murray Dowling
027 556 2655**

**Visit our website
www.canterburycars4x4.co.nz**

**Specialising in
Dairy Conversions
Rural Fencing
Post & Rail**

**H Gill Fencing,
Eastern Bush
Phone 021 225 5489
After Hours 03 225 5488
Email hamish@hgillfencing.co.nz**





We specialise in:

Resource consents

Farm environmental plans

Policy advice

DOC concessions

Landscape plans & assessment

We take care of the paperwork,
so you can do what you do best!

Sonya: 027 5050 077

Rebecca: 027 4246 129

www.slwp.co.nz

Locally owned & operated

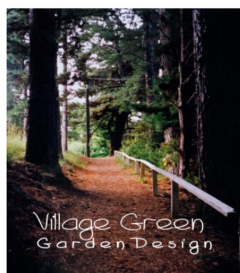
Landscape Garden Design

What do you want
from your garden?

Whether building new or
revamping your existing garden
an overall plan is essential.

Free Initial Site Visit

From a few questions to get
you started, to a full landscape design.



Village Green
Garden Design
Tuatapere

Ph Robert
027 9241 204

ESSENTIAL OILS

100% PURE GIFTS OF NATURE

Florals Trees Plants Herbs Spices Citrus

To learn more

phone your local
Wellness Advocate

Carol Erskine 027 459 9654

FOR SALE

**1973, 4 Berth, Pioneer Caravan, 15;3.
Ropeless awning, 2 new sides.
Good condition. \$9,000**

Phone: 027 296 2545

TUATAPERE OUTDOORS & HARDWARE

For all your

Gardening tools, lawn care, garden
hoses, insect and disease sprays, potting
and compost.

We have those building requirements for
that weekend job with a good selection of
silicone, nails, screws and bolts.

New fishing rods and reels, fishing lures,
good selection of soft bait,
fishing nets, flounder and eel nets.



Good selection
of giftware.

Come in, check out
what we have.

Contact:

Judy 027 225 8192

Paul 027 890 3602

Shop (03) 226 6363



MATHIESON

ELECTRICAL LTD

ETHAN MATHIESON

M 027 634 7534 A/H 03 225 8891

E mathiesonelectrical@vodafone.co.nz

- Domestic
- Commercial
- Dairy
- Pumping & Effluent
- Heat Pump Installation
- Heat Pump Servicing

New Breastfeeding Peer Supporters for Tuatapere



Tuatapere has a new source of support for breastfeeding mothers. Eight women graduated as Breastfeeding Peer Support Counsellors at a ceremony in Tuatapere on 26th November. The women have spent five weeks training through the Peer Counsellor Programme and will become part of Otago & Southland Breastfeeding Support. The course has been facilitated by Lisa Morfett and made available by WellSouth Primary Health Organisation.

Lisa Morfett said "It has been an absolute privilege to get to know such a motivated group of mothers who want to support their community. The peer support programme helps all whānau with feeding challenges and motherhood, empowering mums to make choices that suit their family".



Breastfeeding Peer Counsellors are volunteers who are trained to provide non-judgemental breastfeeding support and information on the normal course of breastfeeding, overcoming common barriers and breastfeeding problems. They are available for one-on-one support; phone, text or email help; drop-in sessions and home visits.

The women are from Tuatapere, Ohai and surrounding areas; there are now approximately 40 peer counsellors across Southland, including Gore and Te Anau.

Bridget Corry, WellSouth Health Promotion specialist said: "We're happy to have a valuable new addition of skilled and knowledgeable community support for breastfeeding mothers in Tuatapere. We'd like to let families know that if they ever need any support with breastfeeding there's lots of help for them locally."


For further information, contact WellSouth on (03) 214 6436 or see www.breastfeedingsos.co.nz


Notes:

1. Ministry of Health Recommendations:


Breastfeeding is the best way to provide newborns with all the nutrients they need. The World Health Organisation (WHO) and the Ministry of Health recommend exclusive breastfeeding until a baby is six months old and continued breastfeeding with the addition of nutritious complementary foods for up to two years or beyond.

2. Contact Bridget Corry on 214 6436, with any other questions






Lindsay Stephenson
Dip Phty, Dip MT, Reg Acup, PG Dip Rehab, MNZCP (pain management)



Andrea Murray
Dip Phty, Dip MT



Alana Makolm
BPhty, BPEd, Reg Pilates Instructor, PGCert (acup), Reg Acup

See the friendly team for help with...

➤ Back and neck rehabilitation

➤ Sports injuries

➤ Dizziness

➤ Chronic pain


➤ Occupational health

➤ PING/Steel Pilates for cancer survivors

➤ Breathing disorders

➤ Exercise programmes

Invercargill clinic open late nights
ACC available
Weekly satellite clinics in Tuatapere and Ohai



60 Deveron Street, Invercargill
P 218 6583 F 218 4105
E office@acceleratephysio.co.nz
www.acceleratephysio.co.nz

INTRODUCING

**STREBEL STRIP TILLER
WITH A KUHN 6 ROW
BEET PLANTER COMBINED
FRONT FERT HOPPER**



STRIP TILLER BENEFITS:

ONE PASS - SAVING YOU MONEY

LESS CULTIVATION = LESS BUGGING

KUHN BEET PLANTER IS ABLE TO SOW SWEDE & BEET



FOR MORE INFO OR TO BOOK PH:

Kahu - 027 5183 448

For Landscaping, Lane Maintenance, Gravel Supply & Cartage

GRADES OF CRUSHED & SCREENED GRAVELS, ALKATHENE LAYING, ROOTRAKING, FARM TRACKS, DAIRY LANES



**K J SUTHERLAND
GRAVELLING & AGRICULTURAL CONTRACTOR
2475 OHAI-CLIFDEN H/WAY
ORAWIA R.D2 OTAUTAU 9682
Ph 0274 367 934**

ELEVATOR SCRAPER, BOBCAT & ATTACHMENTS, LANDSCAPING, TRENCHING AUGERS

Supplies of Gravel Ex Waiau River

River Run Screened Grades Concrete Gravel Pea Gravel
Rejects for soak holes Crushed - AP30 and AP65

Peebles for Sheep and Cattle yards and calf sheds
Fines suitable for cow lane capping

K.J. Sutherland Contracting Bobcat T190

**With attachments: Landscape Rake,
Augers and Trencher**

**Suitable for all landscaping, shed and yard
maintenance**

Muck-spreader and tip trailer available



**PHONE KEVIN
027 367 934 / (03) 225 5716**

INDEPENDENT MIDWIFE

ISOBEL DEVERY

*Caring for women throughout
Pregnancy, Birth till six weeks
Post Natal.*

*Choices for place of birth,
Home or Winton Birthing Units
or Kew Hospital.*

*Free pregnancy tests
available on request.*

**Phone: (03) 22668822
027 2267020**

©Peccaro, EthnoGraphics®



Kia ora Western Wanderer Readers!

A very warm welcome back to you all. What will 2021 deliver us as a school, community and country? Nevertheless, it continues to be an honour living in Tuatapere and being your principal.



Our goal at WAS is to **work together** to provide our students with a rich learning environment. Our vision, as the principal and Board of Trustees, is to put **kids first!** My belief is that all students can learn. As educators, we need to discover how each child learns in order to differentiate our instruction to support diverse learning styles. In a **collaborative effort**, we want children to thrive in all ways possible. My hope is that all children will love school and nurture a learning environment that is positive, safe, warm, caring, as well as a fun place to learn and grow.

Student success is attributed to the **partnership and the relationships** we build within our **community** and this is most important now more than ever. It truly does take a village and at WAS we value **teamwork** and collaboration! Education is a joint venture and Team WAS greatly appreciates the support you provide, as a community, to all our students and staff. The WAS spirit, we pride ourselves on caring for our environment, others and ourselves. Now more than ever it is so important to be **supporting one another** and in our community.



Property Update:

You will see more scaffolding around the school. This is due to more roofs being replaced and buildings being upgraded/painted.

Our Boiler has had its chimney removed and a new chimney flue will be installed. The whole boiler room (interior and exterior) is receiving an upgrade.

The gym is getting a complete makeover - watch this space! The hall interior and exterior renovations are complete - such a wonderful and useful space to have!



Our junior school toilets are looking fabulous and very stylish. The new hand dryers will certainly be a hit!

C Block - the science lab and multi-purpose classrooms are 99% complete. The new furniture, resources and the environment is an area to be very proud of!

Nga mihi, take care and keep safe.
Andrew PB

WAI AU HEALTH TRUST – FEBRUARY 2020

Medical Centre

As you are all aware, New Zealand is aiming to begin a Covid Vaccination programme, later in the year. Due to this, we are endeavouring to complete our catch up vaccination programmes that are currently available in New Zealand.

Below are the list of current catch up programmes. If you, or your family members fit within one of these below schedules, please phone the surgery and discuss with a nurse.

Meningococcal Vaccine: One dose for adolescents and young adults aged 13–25 years inclusively, who are entering within the next 3 months, or in their first year of living in a *boarding school hostel, tertiary education halls of residence, military barrack, or prison.*

Boostrix (Whooping Cough/Tetanus/Diphtheria): Every pregnancy from 2nd trimester. Adult boosters offered at 45 & 65 years of age.

Influenza (annually): Every pregnancy & Aged 65 years or over. Funded from 6 months of age in defined risk groups. *We will be holding flu vaccine clinics as soon as the vaccines arrive. You will be notified by text when these will be occurring.*

MMR (Measles/Mumps/Rubella): Two documented doses over 12 months of age, with minimum 4-week interval required, for those born since 1 Jan 1969. *Please check at home for old plunket books, as these can be immensely helpful when determining if there has been 2 documented doses.*

HPV (Human Papilloma Virus): Aged 11 - 14 years, 2 doses given at least 5 months apart, even if 2nd dose given over 15 years.

Aged 15 - 27 years, 3 doses given with minimum of 5 months between HPV doses 1 & 3.



Waiau Health Trust
69a Orawia Road, Tuatapere
Approved Registered ACC Provider
Monday to Friday
8:30am – 4:30pm
Ph.: 2266123

Practitioner Hours
Amanda McCracken (NP) – every
weekday

Sheryl Eden (NP) – every Monday &
Tuesday

Liz Scott (GP)
2nd Tuesday of every month

Physiotherapist
Tuesdays & Thursdays
Phone for an appointment

Podiatrist
Visits regularly –
Phone for an appointment

Warts/Minor Skin Lesions
Liquid Nitrogen treatment available
Phone for an appointment

Homebased Maternity Care
We are offering this service in the
patient's home. Please contact Jo
Sanford on 2266123 for enquiries.

Day Activities Programme for
the Elderly
Every Tuesday & Wednesday
Please phone for further information.

District Nursing
Available as required by referral

Varicella (Chicken Pox): Born on or after 1 April 2016. Turned 11 years on or after 1 July 2017 (if hasn't had the disease as a child).

Zostavax (Shingles): Turned 65 years on or after 1 April 2018 up to 81 years of age.

There are some exclusions to this vaccine. Please discuss with a nurse if you are interested in this.

Liquid Nitrogen clinic – February 24th - please phone to make an appointment.

GP Availability

I am continuing to source a regular weekly GP, I am sure you will appreciate how difficult this is. We have been advertising and looking at every option possible for over a year now. Availability of GP's in our location is proving impossible, in the near future we will be doing our best to provide this service however due to these changes you may not always be able to see the GP of your choice. I urge you please to contact me should there be any issues with our current service. I find it very disappointing to hear of people discussing their concerns or complaints in the community. Our patients are of utmost importance and we will always strive to offer you the highest standard of care possible. Waiau Health Trust will be hosting a Community Forum in the near future, this date will be advised soon. We would very much appreciate your input at this forum. Waiau Health Trust welcomes any suggestions you may have to enhance or complement our service.

Maternity Support Services

We are now holding weekly coffee groups every Thursday currently running between 1.00 pm -3.00 pm. We are endeavouring to have speakers on a regular basis to benefit the learning of new mums.

Kind regards
Jo Sanford (Manager)

Cell: 027 295 0429

For all your fencing requirements
WESTERN FENCING
SHEEP | DAIRY | DEER



Call BEVAN 0277 413 213



DAGWOOD DAGGING

Available now to all new and existing customers for all your crutching requirements.

3 Stand or Single trailer available
7 days a week, wet or dry.



No job too big or too small.
Competitive rates

Jeff Chambers
027 3042 241

PROPERTIES WANTED!

Genuine buyers waiting
Spring shortage of properties

Contact Julie to discuss how you could take advantage of beating the summer rush



Julie Guise 021 256 4164
julieguise@sre.co.nz

SOUTHLAND REAL ESTATE LTD
Licensed under The Real Estate Agents Act 2008

SOUTHLAND REAL ESTATE LTD
Licensed under The Real Estate Agents Act 2008 MREINZ



Rabco Ag Ltd – 021 362 766 – admin@rabco.nz
Agricultural Contracting Specialists - Western Southland



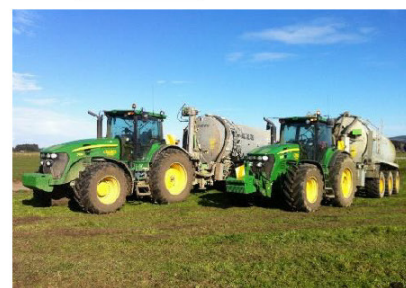
**Full silage
& baling
service**



Cultivation – including Direct Drill & Precision Drill



Effluent – Excavators - Hedgetrimming



Welcome to the
February Edition of
"What's Been Happening?" at ...

Kia ora & **Happy New Year** from Hauroko Valley Primary School

WOW - what a sprint to the finish line to end our year - check out the learning inside and outside of our classrooms, where we open doors to opportunities through our home and school partnerships.

Thanks to Colleen Shields from Aparima Rotary for presenting illustrated dictionaries to our Year 4 students. These are always treasured at home and school for assisting with learning.

John Parsons Cyber Safety Expert visited to speak with each class, parents, board of trustees and staff in regard to keeping our children safe online. He surprised Cooper Gow with his autographed book presented to acknowledge a random act of kindness that made John's day. Tumeke mahi Cooper!

H.V.P's Year 7&8's tackled the Hump Ridge Track for the first time as our senior camp. The group was well supported by an experienced and enthusiastic crew. We are extremely thankful to have the support of Jenni & Damon, Mandy & Alan, Alice, Kirsty, Philip, Andy and Sheryl. It was a pleasure to have Joe join our team getting to know our students and staff while taking in the beauty of the Hump Ridge Track. We are extremely grateful to the Hump Ridge Track Trust for their support. Also thanks to Dale Green from Heli My Way for being an absolute legend in supporting our team by transporting essentials.

How awesome is this achievement?! Lucas Templeton is a Southland Primary School Athletics Champion. Congratulations Lucas for your win in the 1500m track event for 11 year olds at the 2020 Southland Athletics Track and Field Championships.

We farewelled our Year 8's with their annual BIG Day Out including several fun and challenging activities. Our young leaders presented heartfelt speeches at our Prize Giving. We held a leavers assembly to present their kete and lei. The Year 8's spent time painting a favourite location with oils at Gallery 65; with the guidance of artist Wayne Edgerton - thank you it's such a special opportunity for our leavers. All the best to Katie, Harrison, Kenzie, Lithum and Noah for new learning adventures in 2021.

Our recipient of the Sir Peter Blake Leadership Award for 2020 was Kenzie Martin. Kenzie was also presented with the 2020 Hauroko Valley Primary School's Cultural Award for her depth of understanding, excellence and commitment to cultural diversity and in supporting others through whanaungatanga.

Congratulations to Harrison Erskine who was presented with the Hauroko Valley Primary School Shield for 2020. Harrison has demonstrated excellence and achievement in academic, cultural and sporting pursuits both within and out of the classroom and throughout his learning journey at H.V.P.

It was a thrill to perform for our friends and families our version of "Twas The Night Before Christmas" at the Tuatapere RSA Hall. This year we exceeded our expectations (particularly within a short space of time). Our team - produced a script that was crafted to include local places and people, incorporated slick lighting and sound, clever choreography that showcased each student and their classes items and an amazing Year 6-8 Rata class executing our end of year production like professionals as our cast and crew. Thanks for being part of our Performing Arts end of year performance! Ka kite ano/See you again.



Term 1, 2021 Events

2021 February & March - Waitangi, Life Education Bus, Western Swimming Sports, Athletics - Western & Southland, Southland Rippa Rugby Tournaments.

Always our Best/Tonu to tatou pai

Alex Reid CONTRACTING

**Paddock Cultivation from
Ploughing to Sowing Dry Hire
available Aerating Direct
Drilling Ridging Mulching**



Dairy Lane Maintenance

Tip Trailers • Vibrating Roller • Effluent Services

Sheep Conveyor

Drenching, Vaccination etc • 3 way draft



Rural Contractors
NEW ZEALAND

Large Skid Steer for calf shed cleaning, loading Muck Spreaders etc

4 Muck Spreaders • 16,000 litre Slurry Tanker
• Pond Stirrer • Umbilical Slurry System

**PH ALEX 0212775308 CELL
03 2255377 HOME**

WaterForce

**Irrigation Systems
Pumping & Filtration
Effluent Dispersal
Water Management**

20 Winton Hedgehope Highway, Winton
03 236 9805 www.waterforce.co.nz
0800 4 FORCE (4 36723)

WESTERN ELECTRICAL

2008 LTD

Electrical Solutions

Domestic | Industrial | Commercial

Quality Service at Competitive Prices

- New Builds, Rewiring & Alterations
- Dairy Shed, Farm & Industrial Maintenance
- Hotwater Element Replacement
- A/H Call Out Service Provided



**Ph 03 225 8974 / 027 439 3787
Fax 03 225 8973**



Jacqui and Superior go the extra mile

Are you frustrated with the lack of service from your local fertiliser consultant, peddling the same advice year after year regardless of your production outcomes, environment and sustainability?

Give **Jacqui Chamberlain** of Superior Fertiliser Specialists a call. She will bring whole new meaning to service and client/advisor relationships.

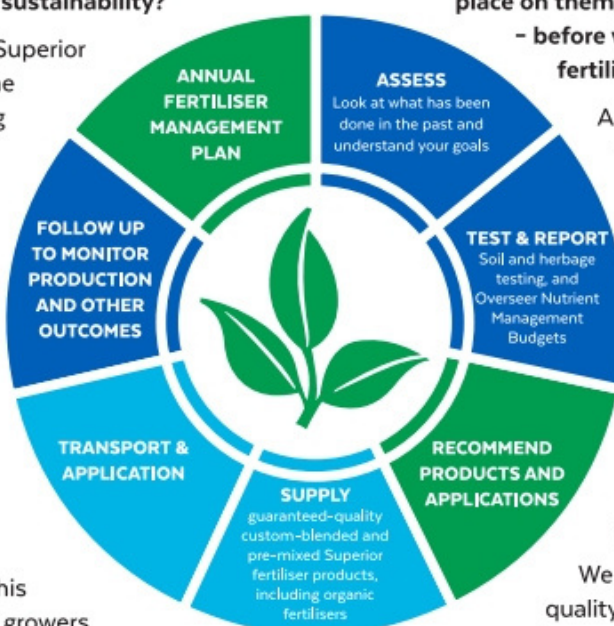
Jacqui is a key member of the highly skilled Superior team totally committed to helping you develop healthier, more productive soils and plants.

We form a specialist fertiliser company that provides high quality advice and products at competitive prices. We have been doing this for South Island farmers and growers for just on 20 years.

Superior promotes a total soil care package. First, we get to understand the make-up, nutrient status and health of your soils, the demands you are going to place on them, and your production goals – before we apply one kilogram of fertiliser.

A comprehensive regime of vigorous soil tests will be undertaken and the results will provide the basis of a Superior Fertiliser Management Plan customised for your unique situation. This will complement your farm's Environmental Plan and provide the blueprint for an ongoing annual fertiliser programme.

We then supply guaranteed-quality solid fertiliser for your pasture and crops, monitor production and other outcomes, and update your Plans as required.



It's free to talk so don't hesitate to give Jacqui a call.
Phone 027 202 0611

Jacqui Chamberlain
Fertiliser Advisor Southland
027 202 0611
jacqui@superior.net.nz



 FERTILISER SPECIALISTS
SUPERIOR
www.superior.net.nz

**TUATAPERE SERVICE STATION
20 ORAWIA ROAD
PHONE: 03 2266475**

FISHERMEN COME IN FOR A BROWSE WE HAVE IN STOCK

**Rods, reels, sinkers, hooks, lures, line, knives,
nets, waders, sawdust**



**WE CAN PROCESS ALL YOUR
REGISTRATIONS
ROAD USER CHARGES
CHANGE OF OWNERSHIPS
VEHICLE EXEMPTIONS
CANCELATION OF REGISTRATION
CHANGE OF HUBOMETERS**

HARDWARE IN STOCK

**Nails, screws, tec screws, bolts and nuts, dyna bolts, pulleys,
karabiners, hinges, padlocks, rope, chain and much more**



OPENING HOURS

Monday to Friday 8.00am to 5.00pm