

# WESTERN WANDERER

Colac Bay | Orepuki | Tuatapere | Clifden | Orawia | Blackmount | Monowai



Photo Credit to **Douglas Agnew**  
for this month's cover photo.

## IMPORTANT PHONE NUMBERS

**EMERGENCY**  
**POLICE / FIRE / AMBULANCE:** 111

**MEDICAL CENTRE:** (03) 2266 123

**COMMUNITY WORKER:**  
027 757 5983

**HAUROKO VALLEY SCHOOL:**  
(03) 2266 753

**WAI AU AREA SCHOOL:**  
(03) 2266 285

**TUATAPERE CEMETERY TRUST:**  
(03) 2266 065

**CHAMBERS SERVICE STATION:**  
(03) 2266 654

**TUATAPERE SERVICE STATION:**  
(03) 2266 475

**TUATAPERE FOUR SQUARE:**  
(03) 2266 898

**TUATAPERE OUTDOORS & HARDWARE:** (03) 2266 363

## We Want Your Photos!

Share your local area snaps with us  
via Instagram or to the  
"This is Tuatapere" Facebook page  
and tag them with

**#yourwesternwanderer**

We'll choose one each month to  
feature on the cover of the  
Western Wanderer!

You can also email us a copy to  
**yourwesternwanderer@gmail.com**

*Please ensure your photo is  
landscape size*

Special thanks to



**WAI AU AREA SCHOOL**  
Year 1-13 Education

*Live to LEARN, LEARN to Live*

for their support with the printing

# Tuatapere & District Promotions Inc

Paula McKenzie, President

Hi All,

I must admit that I am feeling rather chuffed at the mo. We have just been granted enough funding from The Tuatapere Community Partnership fund to complete the first stage of our FlagTrax project. FlagTrax extending from the Riverton side of PGG Wrightson over the bridge to the Tuatapere Domain entrance. All going well we may have some flags up for Xmas! And Xmas I might add will be here before we know it! At our recent meeting we also discussed the idea of a community Christmas tree. We will be looking into options over the coming weeks.

We have received correspondence from SDC regarding the Railway station survey. Our group has been invited to submit a business proposal to the Community Board, to either lease or purchase the Railway Station Building. The land on which it sits is public utility land and therefore can only be used for community purposes. This limits our options considerably. The SDC are retaining the Goods Shed and Water Tank for Heritage purposes. We are looking at options that will be sustainable going forward while preserving the heritage of the site.

Our Events sign has been operating as we had hoped it would. Nathalie has been a star keeping up with the changes required. Thank you Nat.

Our "retro" sausage sign is well on the way to being replaced with a modernised version. Again, we hope to have this project finished by the end of year.

On a final note I would like to pass on our sincerest condolences to Helen McKay and family. A massive hole has been left in our community with the loss of Val. He was an amazing gentleman. Val's positive contributions to the Tuatapere Community over many many years will be seen and felt long into the future. Our thoughts are with you.

## Available for Casual Work

Do you need a hand to fill a gap for a day or two or a few weeks?  
Experienced (25yrs) dairy & beef farmer, capable machinery operator.  
Can be sole charge or one of the team.  
Conscientious and reliable.

**Phone: Leith McMullen 0274 963 721**  
**email: leithmcmullen@gmail.com**



## BEN MCMASTER BUILDING

Ph: 027 202 7955  
benmcmaster@live.com

- Licensed Building Practitioner
- Sheds, renovations & new homes
- Based in Western Southland

*You dream it, we'll build it*

## Painting & Handyman Services

Experienced Painter

I can help with all sorts of odd jobs too!

Gardening  
Lawn mowing  
Tree & Hedge Trimming  
General labouring

Phone **Luke Wikstrom 027 2773 925**



For all your fencing requirements

## WESTERN FENCING

SHEEP | DAIRY | DEER



Call **BEVAN 0277 413 213**



# Our Community Notice Board

3

## KNITTING WOOL WANTED

Do you have any odd balls or part balls of 8ply or 4 ply wool that you don't want?

I would be glad of any contributions, to be made into rugs that get sent through Mission Without Borders to Eastern European countries. Thank you.  
Contact **Jean Erskine (03) 226 6396**

## THANK YOU!

Jason, Kaylene, Bailey, Kenzie, Sierra, Jonty and Hadlee would like to thank our family, friends and the wider community for the tremendous amount of support they have received since Kaylene's accident. The meals, baking, flowers, help with kids, phone calls, messages and support at home has been incredible and from the bottom of our hearts we thank you. What an amazing community to be involved in.

## TUATAPERE BOWLING CLUB

**Birch Street (Next to the school)**

Practice Night - Thursdays 6.30pm

New players are always wanted and welcome!

Contact: Chris Potter 0204 1522 847

## SALVATION ARMY FAMILY STORE TRUCK

The Salvation Army Family Store Truck will come out and collect large amounts of your pre-loved furniture & other household items. This service is free. Please call the store to organise your visit on **03 214 5380**



## TUATAPERE TOY LIBRARY

18 Orawia Road, Tuatapere  
(next door to Tuatapere Service Station)

If you are interested in becoming a member get in touch (via FB messenger or ph) to see how you can access the toy library! We have heaps of toys available.  
Please phone Minessa 027 311 2112



## LOOKING FOR BOOKS/OLD PHOTOS

I am writing a book on the history of the Waiau River, well the whole catchment really.

I'm looking for books on the history of the districts in the catchment such as Tuatapere, Papatotara, Clifden, Manapouri etc, particularly stories about the early days along the river and associated farming and industries, gold, disasters, milling, exploring etc.

I'm also looking for older photos of bridges, punts, the Belmont dredge, mining etc.

Please contact: **Lloyd Esler** Ph. 03 213 0404 email: [esler@southnet.co.nz](mailto:esler@southnet.co.nz)  
or post: 15 Mahuri Road Otatara RD9 Invercargill 9879

## TUATAPERE SCOUTS

Are you and your family looking for something that will foster personal development, create a sense of community and at the same time challenge you or a school age member of your family?

Have you thought of joining Scouts?

At Scouts we have a Wednesday Programme:

- Keas for children 5-7 yrs; 3:30-4:30pm
- Cubs for children 7-9½ yrs; 4:30-5:30pm
- Scouts for 9½-15 yrs. 5:30-7:00pm

We also have a need for leaders so we can deliver our programmes effectively.

**Contact:**

Leader Anne-Marie 027 688 5828  
Group Leader Quinton 027 223 4842  
or (03) 226 6969

## TUATAPERE PRESBYTERIAN CHURCH MARKET DAY

The church market is held at 10am every 3rd Saturday of the month in the Tuatapere Presbyterian Church Hall, Main Rd, Tuatapere.

Market Day:

**Saturday 21st November 2020.**

(Next Market Day: 19 December 2020)

All welcome to come along and enjoy the opportunity for a cuppa and a chat and have a browse at the local crafts available.

If you would like a table for hire please contact: **Helen Todd** 022 378 9743

# Our Community Notice Board

## TUATAPERE PLAYCENTRE

23B Orawia Road.

### Friday Playgroup 9am-12pm

All parents and children welcome!  
Children's morning tea is a packed lunchbox from home at Playgroup (as opposed to a shared morning tea).  
Any queries please contact:  
Gemma Bennett 022 040 3368  
Alice Harris 027 270 0363

## CLIFDEN PLAYGROUP

45 Otahu Eastern Bush Road.

### Every Wednesday (during School Term) 9:30am - 12:30pm.

All mothers and children welcome.  
Bring packed lunchbox for your child's morning tea. Any queries to  
Lynley Patterson 027 429 7436

## WAI AU VALLEY PRESBYTERIAN CHURCH

Services for all ages! Every Sunday at 10.30am Tuatapere Presbyterian Church Main Street, Tuatapere.  
All welcome to join us.  
For information please contact:  
Chris Howden Session Clerk 021 477 999  
For Community Chaplain: 027 416 0659

## TUATAPERE HEALTH & GIFT SHOP - Riverton Pharmacy

We now have two courier drops for prescriptions for our Tuatapere customers: **1:00pm** and **4:45pm**.  
The Health & Gift Shop is open from 12:30pm - 5:30pm.  
If we can help in any other way, please contact Riverton Pharmacy (03) 234 8515

## WAI AU MEMORIAL LIBRARY

### Library Hours: Fridays

10:00am - 11:30am  
2:30pm - 4:00pm  
7:00pm - 8:00pm



The Library now has Wi-Fi. Available free to all library members. Just ask one of our friendly volunteers to help you set up your device.

## TUATAPERE MAINLY MUSIC

A pre-school music and movement-based playgroup.

Mondays during the school term at the Tuatapere Presbyterian Church Hall.

Music session starts at 10am followed by a time of morning tea and play.

\$2 per family.

Morning tea is provided for all.

New families welcome!

*Find us on Facebook:*

*"Tuatapere Mainly Music"*

For more information contact

Heidi 022 315 3326



mainly music  
est. 1990

## COUNTRY CORNER CRAFTS

Come in and browse and see what we have to offer. Hats, scarves, children's knitwear, cards, jewellery, woodware, sewing, jams, pickles, sauces, etc.

Tuatapere souvenirs "On Natures Edge" logo are always available.

Is anyone interested in joining to sell their crafts? You are more than welcome to contact us.

If anyone wants to volunteer their time and work in the Craft Centre - let us know! It's a great way to meet people!

If you wish to view the shop and it is closed, please ring

Louise Greber (03) 668 6001 or

Lyla Sherriff (03) 226 6187

and they will open it for you.

## TUATAPERE ENVELOPES

Envelopes printed with the "Tuatapere on Natures Edge" Logo are now available again.

These can be purchased at

Country Corner Craft Shop 1A Orawia Road

**Cost \$3.00 per 10**



## TUATAPERE BUSHMAN'S MUSEUM

Orawia Road. If the Bushman's Museum is not open when you have visitors who wish to view, you can contact:

Lindsay Faulkner (03) 226 6650 to arrange a suitable time.

# Our Community Notice Board

## TUATAPERE COMMUNITY WORKER

Room 5 Medical Centre  
69A Orawia Road  
From Monday - Thursday 10am to 3pm  
Keri Potter **027 757 5983**  
Email: tcworker@xtra.co.nz



## WESTERN SOUTHLAND HEALTH SHUTTLE

The Western Southland Health Shuttle Service is up and running again.

We travel from Otautau, Ohai, Nightcaps, Tuatapere, Riverton - covering all of Western Southland.

We also connect with the Invercargill-Dunedin shuttle.

The Western Southland Health Shuttle operates Monday - Friday (excluding Public Holidays).

Bookings are required by 3pm the day prior to transport.

**Ph: 0800 103 046 to book.**

Please book as soon as you receive your appointment.

## SENIOR CITIZENS

Senior Citizens is a group of over 60s that meet every Friday afternoon at 1pm at the rooms behind the RSA Hall.

We are always looking for new members so if you would like a fun afternoon playing bowls, cards or just catching up with friends, come and join the group.

Contact: Olive Bennett Ph (03) 2266 477

## TUATAPERE VOLUNTEER FIRE BRIGADE

We're on the lookout for members to join this well rewarding organization. We are looking for persons who are, ideally, available throughout the day. If you think that you would like to try this (sometimes lifelong) commitment, then please feel free to come and try it! We train on Tuesday nights at 7:30pm during daylight saving and 7pm through the winter months. We look forward to meeting with you.



## WESTERN SOUTHLAND WOOLCRAFT GROUP

Spinning, Felt, Weaving, Knitting, Crochet. Other crafts welcome!

**1st Wednesday of the month.**

10am - 3pm. BYO Lunch.

For details please contact

**Helen Todd 022 378 9743**

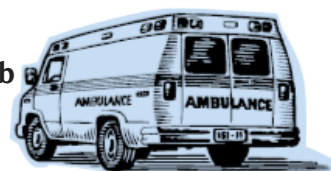
## TUATAPERE AMBULANCE

### Did YOU Know?

The Tuatapere Ambulance is a funded service by the Tuatapere Lions Club, for the residents of Tuatapere & District.

Should you receive an account for this service from St John, please forward it immediately to:

**The Treasurer  
Tuatapere Lions Club  
PO Box 47  
Tuatapere**



Sometimes we experience difficulty in receiving the invoices for YOUR trip. So PLEASE do forward them on to us.

Thank you!

**Tuatapere Lions Club Charitable Trust  
Ambulance Committee**

## TUATAPERE & DISTRICT LIONS CLUB PROJECT

### SUPER DIRT

Super dirt bags are now weighed so more in each bag!

**\$8 per bag - ready for your garden!**

Super dirt can be collected at

Cracks Yard, Grove Burn Road,  
in the mornings Monday to Friday.  
Weekends by arrangement.

Delivery by arrangement (but not guaranteed)

Phone Trevor (03) 225 5864 or  
Stephen (03) 226 6817





# Community Notices & Events

## It's time to get your thinking caps on!

We want floats, cars, tractors, horses, motor bikes carts, trucks and trailers to be in our awesome

## Christmas Parade

coming up on

December 23rd!

## What will your group or school do this year?

We had an awesome parade last year thanks to everyone who put in an effort! Well done!

This year, let's beat last year's show & make it better than ever before!

### All enquiries to:

John Munro (03) 226 6341 or  
027 412 2925



## TUATAPERE HIGHLAND PIPING & DANCING SOCIETY 64th Annual Competitions



RSA Hall, Main Street  
Tuatapere

**Saturday 7th November**

8.30am onwards  
**Spectators Welcome**

## Thank you!

I want to thank all the sponsors who supported our Pink Ribbon Breakfast. We had 46 participants. All colourfully dressed. The standard of the breakfast A+ thanks to Gary and his team at the Waiau Club but even more so as we didn't have to do the dishes. A big thank you to Karen, who did a great job as our speaker and Karen, Debbie and Sonya showing us their Steampunk creations.

**We raised \$1958.00**

Our sponsors were: *Clifden Rural Women; Hungry Hippo; Four Square Tuatapere; Chambers Garage; Riverton Pharmacy; Waiau Valley Shearing; Green Machine; Kraken Fishing; Aparima Tavern; & Tui-2-Town.*

Donations from: *Wendy Knowler; Jean Erskine; Ngarita Dixon; Chrissy Lampitt; Jo Sanford; Janette Sellwood; S Cordess; & Isobel Green.*

Biggest thanks to Karen Lord (Partner in Crime)

*Goke Mc Gracken*



Well this has been a different year,  
but great results.

Thanks to the Waiau Town & Country Club for  
hosting our quiz and donating raffles.

To Mark for helping sell our beautiful cakes made  
by Judy and Lynette - thank you.

Guess the Grocery Hamper Value  
\$90.56

Winner: Pauline Devery

It has been another awesome year for our  
Tuatapere - Orepuki area, raising a total of

**\$3228.00**

Makes it all fun. Until next year!

*Isobel Green*

# Tuatapere Toy Library / BuBHuB

In recent years the Toy library has been struggling, which is a shame because it offers great opportunities to learn through play and it is accessible for everyone at a small membership cost.



We put our thinking caps on and have come up with a renewed plan for the Tuatapere Toy library.

The Tuatapere Toy library and Waiau Health Trust have come together. Waiau Health Trust is contracted by Southern District Health Board through its Maternity Support Contract to provide services for preschool families of Tuatapere and surrounding areas. Waiau Health Trust will provide the library with an outdoor space for a storage cabin from which we can hire out the toys. They will also provide us with indoor space for mums and bubs to meet for a coffee and a chat. As well as providing a space to allow parents to attend education and training workshops (like the breastfeeding course that started the 29th of October). We want it to be a safe, informational, casual, fun place to share ideas and build each other up.

We would like to have an information wall, a noticeboard, parenting books to borrow and a go-to person to contact who will be able to help you or refer you to the right person if needed. The medical staff and community worker are on site, the medical centre provides antenatal care and midwives work from here - there really is not a better place for this hub.

Just one little hurdle ...

There is no space for all the toys ...

But we have a plan! Waiau Health Trust is happy for us to use part of their outside area and to put a movable storage cabin there for toy storage. While we are on the subject of solutions, we are also wanting to run this cabin on a key system similar as the Tuatapere Swimming Pool. This will allow all members to pick up toys whenever it suits them. Which is perfect because restricted days and times are just a thing of the past with services like this in a small community like ours. To comply with this great plan, we need \$20,000. We are hoping to raise \$5000 ourselves by doing multiple fundraisers (so keep an eye out for these in the coming months 😊) and we'll also be applying for funding for the remaining \$15,000. We really want to make this happen as this will be a perfect, low cost, long term solution to keep the Tuatapere Toy Library functioning long into the future.

Your support means a lot to us. Please check out our Toy Library Relocation Fundraisers below!



**BUY NOW FOR XMAS**

**Steel Grade Pegs**

**No Rust**

**\$22.50**

THE  
**TUATAPERE**  
TOY LIBRARY FUNDRAISER

Buy online below or call Nathalie 0274759075

[www.myvitabag.co.nz/collections/tuatapere-toy-library](http://www.myvitabag.co.nz/collections/tuatapere-toy-library)



## RAFFLE

**\$5** per ticket

1ST PRIZE - JOHN DEERE PEDAL TRACTOR WITH TRAILER

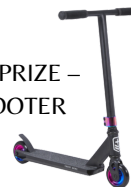
Kindly donated by  
Southland Farm Machinery



2ND PRIZE - STIHL CHILDREN'S PLAY SET



3RD PRIZE -  
SCOOTER



FOR TICKETS Please contact any Toy Library Representative,  
or message our Facebook Page

<https://www.facebook.com/Tuatapere.Toy.Library>

or message Maria on 027 843 4691

Prizes may differ slightly from these visual representations



## Jingo Evening

Proceeds going to the Tuatapere Toy Library

Waiau Town & Country Club

Thursday, 12th November at 7pm

# Special Feature - Part Two

*Written by George Charlton in August 2019*



Having read the report on Doctor Elder (shared in the October Issue) it brings back a lot of memories to me. I remember in the 1950s a polio epidemic where, even in the Tuatapere area, some people died. I was seven or eight at the time and we lived up Jenkins Road in one of two houses at Templer's Mill. My father, at that time, worked in the National Bank. I developed a mild strain of the polio virus and still today I remember being a very sick young boy. Dr Elder was coming 2-3 times a day to check up on me. He would arrive sometimes in the middle of the night, come in and check up on me, get me a glass of milk out of the fridge and settle me back down in bed and go. He would never put the lights on. He always used a torch and Mum and Dad would not know he had been until I told them the next morning.

Doc Elder mixed well with the Tuatapere community being involved on most of the organizations. On the sporting side Doc Elder was a very good tennis player. Dad, Doc Elder, his son Christopher, daughter Elizabeth and I played a lot of tennis together and against each other. Badminton was another passion of Doc's. It was quite common for him to turn up at 11pm as everybody was going home. Some of us would stay and have a game with him and as we would go home to bed he would go up to the Monowai Village on house calls.

On leaving school in 1960 my first job was at McIntyre's Sawmill. In 1962 I left and joined the NZ Post Office as an exchange operator. The telephone in those days was not 24 hours continuous—Monday to Saturday was 6.00am to midnight and Sunday was 8.00am to 8.00pm. The 'continuous' was about to come in and the post office was recruiting male staff to do the night shifts. Female staff, back then were not allowed to work after 10.00pm. I remember doing the 2.00pm to 8.00pm Sunday shift closing down at 8.00pm, locking up and opening up at midnight and working midnight to 6.00am. Tuatapere now had a 24 hour continuous service.

It was at this time that I got to know Dr Elder very well as the exchange was his mainstay. We were his emergency service. We knew where he was 24 hours a day. Before the introduction of the 24 hour service the exchange closed at midnight. Before closing down each night we put in night connections which comprised of Dr Elder, Police Station, Maternity Home, Fire Brigade and others that connected through to the Invercargill Exchange, which would call out the different services. The Maternity Hospital had a direct line to the doctor's house. Once the 24 hour service was introduced the exchange was the emergency centre for the town. With no radio telephones, no cellphones or satellite phones the only emergency service was the exchange; the emergencies included car accidents, sickness, death, sawmill accidents—"you name it—we did it!" This was before the Lions' Club began the free ambulance service. Dr Elder used his car which was one of the latest model Chevrolets in those days! He used it as an ambulance for many years and no patient was ever billed for the use of his car.

## **The New Ambulance**

A Commer Van, which was brand new, was purchased in 1966 for 3,500 pounds and was converted into an ambulance. This involved an extensive financial canvas of the district. A legacy from the estate of E Rilstone, which amounted to 1,100pounds, and 500 pounds from the Golden Kiwi was a great help for this ongoing project. In those days the drivers only had to have basic first aid knowledge and the doctor or his nurse would travel with the ambulance. Staff training was conducted by Dr Elder and in later years by John Fraser and exams conducted by St John. I was one of the early ambulance drivers and all the drivers were volunteers.

*Tune in next issue for Part 3!*

*George*



# Tuatapere-Te Waewae Community Board

Margaret Thomas, Board Chair

Email: arpad@xtra.co.nz. Phone: (03) 226 6104

## Southland Artists Exhibition

Once again, this Southland Artist group presented a wonderful display of art in the Tuatapere RSA Memorial Hall. It was my pleasure to open the exhibition. I do hope you managed to see it. Several locals presented their works. Thank you. What a great hall this is to stage events like this.

## Clifden Hall

Discussions are continuing with a small group of residents/ratepayers about the future of this hall. Over the years the Clifden Hall has hosted many events. Weddings, concerts, bowls, farewells, meetings etc. My uncle Bert Eason from Otautau built this hall in 1936.

## Electric Charging Station

An electric vehicle charging station has been installed in the car park on the main street opposite the Presbyterian Church.



## Highland Dancing Competitions

The Highland Dancing Competitions will be held in the Tuatapere RSA Memorial Hall early November. If you get a chance pop in for a look and support this group. Dancers come from all over Southland to compete.

## Borland Lodge

The Borland Lodge Trust acknowledges all the organisations who contributed financially to the Lodge over the COVID-19 crisis especially the Lions Clubs. Thank you. This is a great facility for our area.

## Humpridge Track

It is pleasing to see the number of local people who are offering accommodation in the form of B&Bs etc. Travelling people need somewhere to stay. We have many attractions for these people to see and visit.

## Community Partnership Fund

The Tuatapere Te Waewae Community Board were very pleased to receive applications from organisation to the Community Partnership Fund.

A reminder that applications for a further round will close in **February 2021**.

### Want you car washed and dried, windows cleaned?

Price arranged on request!

Contact: Rex Hibbs  
Flat 1/26 Orawia Road, Tuatapere

### WANTED TO BUY

Possum Fur, Hard deer,  
Antler, Deer Velvet.

Phone Leith 027 496 3721

### ESSENTIAL OILS

100% PURE GIFTS OF NATURE

Florals Trees Plants Herbs Spices Citrus

To learn more

phone your local  
Wellness Advocate

Carol Erskine 027 459 9654

## Shearing magazine

Des Williams (editor)

Tel 07 839 2891 : Mob 0274 833 465

Email : shearingmag@xtra.co.nz

Member NZ Guild of Agricultural Journalists and Communicators (Inc)

LAST SIDE PUBLISHING LTD

PO Box 102, Hamilton 3240, New Zealand

# Councillor Report

*George Harpur, Councillor*

Hi and welcome to my November report with the weather trying to warm a little and make some grass grow for the productive sector of New Zealand.

Many will be interested in our political outcome and our future direction but my memory from around 1947 was waking up at Ross, Westland and looking at portraits of M.J.Savage, Peter Frazer and later Walter Nash, opposition parties cried foul but most people survived in households of many children with one wage earner, but we grew gardens, feed the chooks, caught fish and in general got off our butts and done productive chores. Unfortunately we currently have more couch potatoes in this country that get a bigger benefit from staying at home while the productive person is out in the rain doing things for a few dollars more. (Predictions are that much of our fruit may lay on the ground and rot). Now that we have a one party government we will see the wisdom of the voters.

It is great to see the Hump Ridge Track back on course for a great year and we wish them well for the season.

On the Council scene things are not as rosy - many of our assets have been rather neglected over the last few years through to Councillors and Community Boards trying to be prudent and keeping the rates bill down. Unfortunately the chickens have come home to roost. This and many other so called Government Initiatives, plus amenities that have not previously been included in our long term plan are now on the radar (ie; funding for water structures, bridges, storm water etc). We must catch up from past errors and maintain these amenities for the future generations. Many will contest the wisdom of these ways and wish to have comment. These issues will all be part of public submissions due to be released in the near future. The submission period will run from November 4th to December 4th and I urge you all to have your say. Fill in the forms and comment in the appropriate spaces. As your Councillor I am fully aware of the situation and believe that the return for your rates is not reflective of the end product. I am not the only Councillor of this opinion.

We have many business opportunities within Council. The Te Anau airport, supporting the Milford Opportunities, Great South and the extra direct flights from Auckland all should contribute to a success story but for some reason beyond my comprehension, restrictions through trivialities, consents and other unbelievable regulations, positivities turn to negative results.

Well that's my thoughts for this report. Cheers to all.

## **Southland Community Law Centre** 5 Tay Street, Invercargill

**Phone: (03) 214 3180    Fax: (03) 214 3170**

**Freephone: 0800 550 800 (outside Invercargill city only)**

**Free Legal Information  
& Advice for the  
Community of  
Southland**



## **SIMPLY SOOTHING**

Soft tissue pain and tension release

**ANN SUTHERLAND**

Certified Bowen Practitioner

2475 Ohai-Clifden H/way  
Orawia R.D. 2  
Southland 9682

phone 03 225 5716  
Fax 03 225 5716

**Bowen Therapy is a gentle soft tissue manipulative therapy.  
Through manipulation, tension in soft tissue is released reducing  
pain and restoring movement and mobility.  
Also offering Scenar Therapy.**



# Waiau Town & Country Club

**Evening meals (homemade goodness)**  
**available Thurs, Fri, Sat & Sun evenings from 5pm to 8.30pm.**  
Kid's menu. | Please pre book for groups of 8 or more.

**Club Opening Hours: Mon - Thurs 4pm till close.**  
**Fri 3pm – close. | Sat 12pm – close. | Sun 3pm – close.**  
Functions/Events/Meetings/Birthdays/**Christmas Functions BOOK NOW** -  
just call to book & organise, we can cater.

## Upcoming events:

- \* **NOW OPEN THURSDAY EVENINGS FOR MEALS** - every Thursday from 5pm - \$20 specials!
- \* **QUIZ NIGHT** - Thursday 5th November 7pm. Teams of 4, \$20 per team.
- \* **GUY FAWKES** - Saturday 7th November.
- \* **JINGO EVENING** - Thursday 12 November 7pm - Tuatapere Toy Library Fundraiser.
- \* **MINI HOEDOWN** - Sunday 15th November - kicks off at 1.30pm.
- \* **Members Draw & Raffles** – every Friday night!

**Keep an eye on our Facebook Page - upcoming events & bottle store specials!**

## **Annual membership/subscription**

*Annual membership is \$50 or \$30 for pensioners.*  
*Want to become a member, pop into the club & sign up! Or email or call us.*

Phone: 03 22 66 489 | Address: 41 King St Tuatapere

Email: waiautcc@gmail.com | Facebook: facebook.com/waiautcc

| Courtesy Van Available |

**We look forward to seeing you!**



**Lindsay Stephenson**  
Dip Phyt, Dip MT, Reg  
Acup, P3 Dip Rehab,  
MINZCP (pain management)



**Andrea Murray**  
Dip Phyt, Dip MT



**Alana Makolm**  
BPhyt, BPEd, Reg  
Pilates Instructor,  
PQCert (acup), Reg Acup

## **See the friendly team for help with...**

- Back and neck rehabilitation
- Occupational health
- Sports injuries
- PIRC/Steel Pilates for cancer survivors
- Dizziness
- Breathing disorders
- Chronic pain
- Exercise programmes

**Invercargill clinic open late nights**

**ACC available**

**Weekly satellite clinics in Tuatapere and Ohai**



60 Deveron Street, Invercargill  
P 218 6583 F 218 4105  
E office@acceleratephysio.co.nz  
www.acceleratephysio.co.nz



D T KINGS TRANSPORT LTD, is a leading transport company in Western Southland.

**We require BULK SOWER OPERATORS**  
**for our modern units based at**  
**Pukemaori and Tuatapere.**

Applicants for this position would have a **minimum class 2 licence** but a 4 or 5 licence would be advantageous.

Payment options available to obtain a  
class 2 licence (conditions apply).

You may have had some tractor / truck driving off road  
experience and want to further your interest in heavy transport.

We are happy to help you into this position.

If you are reliable, have a can do attitude and think you would  
be able to operate a bulk sower, then we have a position for  
you with good remuneration and allowances dependent  
on relevant experience. Also you can join our free medical  
insurance scheme.

D T Kings transport operates under a drug and alcohol free  
policy. The successful applicant will need to pass a  
pre-employment test and a pre-employment medical exam.

For more information confidentially, on this position email or call

**Paul Williamson (03) 225 5899**  
**careers@dtking.co.nz**



# Ratty Says ...

Waiau Memorial Library

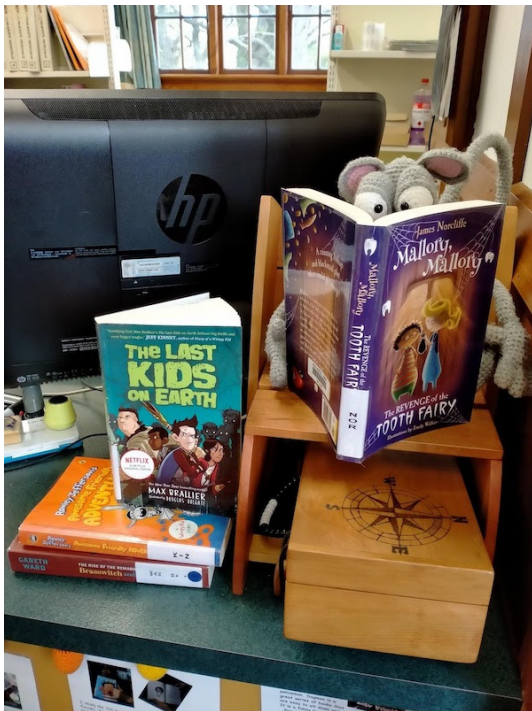
Remember all of those chocolates I bought with my pocket money for fundraising? They ALL SOLD! WOOHOO! We raised \$82.

How cool is that?

Thank you to everyone who bought my chocolates. I hope you enjoyed them as much as I did! They were yummo!

I got to go shopping to buy the books. It was soooo much fun. There was a lot to choose from and it took me ages to pick out which books I wanted. I bought 5 books and one has already been borrowed! There's one book I'm really looking forward to reading. It's called 'The Last Kids on Earth' and it looks really fun.

I had \$5 left over so I used it and the last of my pocket money to buy some prizes. Shhh, don't tell anybody, it's a surprise.



## TUATAPERE OUTDOORS & HARDWARE

for all your

GARDEN SEEDS, GARDENING TOOLS,  
SPADES, SHOVELS RAKES ETC

LAWN CARE PRODUCTS

BUG SPRAYS

BORER BOMBS

A RANGE OF SILICON SEALERS

NO MORE GAPS INTERNAL & EXTERNAL

WET AREA & PLUMBERS SILICON

NEW STOCKS OF FISHING RODS & REELS

NEW LURES, TACKLE BOXES & LANDING NETS

CAMPING GEAR

GAS CANISTERS, PORTABLE BARBEQUES,  
CHAIRS, STRETCHERS ETC

HUNTING GEAR

INCLUDING CLOTHES, AMMO,  
RIFLES .22 & CENTREFIRE

**Due to Sharon finishing at the salon, we have a  
space for lease in our premises.**

**All enquires at the shop or on 027 225 8192**

We thank Sharon & wish her all the best in her  
new endeavor

Have a great month everyone! ~ Jude and Paul

Ph **027 225 8192** or **(03) 226 6363**

## PROPERTIES WANTED!

**Genuine buyers waiting  
Spring shortage of properties**

Contact Julie to discuss how  
you could take advantage of  
beating the summer rush



**Julie Guise 021 256 4164**  
[julieguise@sre.co.nz](mailto:julieguise@sre.co.nz)

**SOUTHLAND REAL ESTATE LTD**  
Licensed under The Real Estate Agents Act 2008 **MREINZ**

**SOUTHLAND  
REAL ESTATE LTD**

Licensed under The Real Estate Agents Act 2008

**MREINZ**

# A Piece of History

by Des Williams

## A Story the Church Bell Tolled

A ship's bell, first installed on a 751-ton full-rigged ship named *England's Glory* at Sunderland, England in March 1869, ended its days at Tuatapere's Methodist Church, when that house of worship was 'dedicated to the service of God' in 1910.

The sailings of *England's Glory* from one end of the earth to the other over a 40-year period included three trips to New Zealand, in 1870, 1876 and fatefully, 1881, when it was wrecked on rocks at Lookout Point, near the entrance to Bluff harbour.

The *Otautau Standard and Wallace County Chronicle* of 15 November 1910 informed readers, Tuatapere's new church had acquired a bell with history attached – including burial and resurrection!

'Since its birth in a British foundry its voice has been heard in many strange lands,' the *Chronicle* explained. 'Many a time it has cheered the heart of the watch on deck at dark midnight, by the sound of 'eight bells'. In fair weather and foul, it sounded the same optimistic note in all latitudes.'

The sound of the bell had been stilled when *England's Glory* 'lay crunching on the rocks outside Bluff Harbour, and the silvery tongue of the good ship's bell was ignominiously buried among old junk salvaged from the wreck.'

Now for the best bit: 'A resurrection day has dawned for the old bell, which has now entered upon a kind of spiritual existence. On the still Sabbath air the tones of the bell reverberate along the wooded banks of the mighty Waiau and penetrate far into the valleys of the Longwoods, calling worshippers to prayers; the bell of *England's Glory* no longer, but Tuatapere's crowning glory.'

The church with the auspicious bell was built on Orawia Road in the vicinity of the present Police residence. The building was instigated by Mr SJ Campbell, a 'home missionary' from Australia and the church opened with grand celebrations on 30-31 October 1910.

On week days, the church also served as a school, bridging the gap between John Davies' Cymric Hall (1910) and the Education Board school that opened in 1913. The Methodists were first to provide church facilities to the frontier township, followed by the Presbyterians (1917), the Catholics in 1925 and the Anglicans, who built their church in 1928. The Methodist church was replaced by a new structure about 1960.

It is interesting to note the original town survey did not allow any land for churches and Mr Campbell had to acquire the section and clear it of native bush prior to commencement of building.



**MR STEEL**  
TUATAPERE  
**PH: 027 276 6816**  
MALCOLM

**For all your engineering,  
steel fabrication and repair needs!**

*Shirley Whyte*  
Your local real estate specialist living & working in Western Southland  
now also an Accredited Justice of the Peace.




*for:* Friendly service, reliability,  
sound local knowledge in  
Western Southland,  
Te Anau & Stewart Island




**M 027 504 5220 O 03 214 4080**  
E [shirley@harcourtsinv.co.nz](mailto:shirley@harcourtsinv.co.nz)  
W [www.harcourts.co.nz](http://www.harcourts.co.nz)

Harcourts Real Estate Ltd Licensed Agent REAA 2008

# Chaplain's Chat

David Duthie, Community Chaplain

waiauvallychaplain@gmail.com



Did you hear the one about the colour blind optometrist?

It's not actually a joke, but a true story. Several years ago my son was undergoing some vision testing. When it came time to do the tests for colour blindness the optometrist reached into his drawer and pulled out a box of different lenses. He explained he couldn't tell what was on the cards without them for he himself was colour blind. Thankfully he had the correct lens available and was then able to not only see better for himself, but also to go on and help others.

Thinking about life, this use of different lenses is also true. Often, unless we view things through the right lens, we end up missing the picture or only getting a partial view of a person or situation. This can go on to lead to more problems all because we've been viewing things through the wrong lens. When we change the lens through which we look we can get quite a different perspective, discovering a solution to an issue or even finding out that there is not really a problem at all. In writing this I'm reminded of the old sayings about walking a while in another's shoes or trying to see through their eyes before making an assessment. I wonder what it would be like if we could all do this more often?

What if, instead of judgement we tried the lens of understanding; instead of assumption, we tried the lens of inquiry; rather than offence we tried grace; rather than just focusing on the moment we stepped back to view the bigger picture. I'm sure you can come up with many different ways to view things.

The other interesting thing about the optometrist and the eye test is just as my son needed someone to help find the right lens, so did the optometrist. Sometimes we need some help to see things as they are and not just how we perceive them to be. Next time you face a challenge try a different lens, you might just see things in a whole new light!

## Seasonal Part-time Employment

Workers required to help with the tailing of lambs.

Approx. mid October to the end of November.

Contact Robbie 03 226 6501 evenings.

## Do you have an idea for a special feature in the Western Wanderer?

Let us know because we'd love to hear from you

[yourwesternwanderer@gmail.com](mailto:yourwesternwanderer@gmail.com)

## TUATAPERE HANDYMAN SERVICES

**Barry Bennett**

**(03) 226 6730**

- Painting - Interior/Exterior
- Waterblasting
- Carpet & Upholstery Cleaning
- Spider & Fly Spraying
- General Repair Work
- Lawnmowing / Hedge Trimming / Weeding







**Kia ora Western Wanderer Readers.** Term Four is probably our busiest period of the year. The time we have left is precious and the many requirements which need to be met, certainly tests one's mental strength and character. Despite facing a range of challenges, our WAS students remain consistently resilient and happy; they're able to laugh at their mistakes, give things a go and are proud to be attending WAS. They are experiencing many personal successes and also recognise the importance of working as a team.

The WAS staff and I are very proud of our students, as are their parents/caregivers and there are some amazing success stories, just a few are named here. It continues to be a real privilege being your Principal, working and learning together, in a positive, calm and family-oriented environment.

**Term Four Up-coming Events:** I'd like to invite you to come along to our **Cultural Evening on Wednesday 6:30pm, 4th November, (Week 4)** which will consist of a range of musical talent and cultural items. Come and see a slice-of-life at Waiau and celebrate the year 2020 with us! Also please come along to our annual school awards **Prize Giving** which is on **Thursday evening, 10th December (Week 9), starting at 6:30pm** where we will be showcasing and celebrating our student's successes.

**Athletics Day:** Recently, we hosted HVP at the WAS Athletics Day. This is always a golden opportunity to have all of our students mixing and mingling. I noticed a real sense of pride in all the students

(as well as at the TRYathlon day) and they seemed just so happy, relaxed yet showing grit and determination as they competed in a range of athletic events. This is a testament to both schools' respective staff and families.

The following are outstanding records from our WAS students:

**Hamiora Larson** - broke 4 records:

- 8 yr old boys 100m sprint = **16.75s** (beating Brycen Erskine's previous record of 17.25s);
- 8 yr old boys Long Jump = **2.86m** (beating Ethan McCallum's previous record of 2.75m);
- 8 yr old boys Discus = **13.65m** (beating Ben Egerton's previous record of 13.43m); and
- 8 yr old boys High Jump 1.06m (beating Peter Devery's previous record of 1.05m).

**Lexi Hewton** - 8 yr old Girls High Jump = **0.95m** (beating Jay Egerton's record of 0.92m).

**Luca Unahi** equalled a record in the 100m - 10 yr old Girls 100m = **17.12s** (equalling Hana Moir's record from 2016).

**Aidan McDowell** - U12 Nerf Throw = **35.70m** (Previous record from Peter Devery 30.8m).

Congratulations to these students!



**Heading towards 2021: WAS has two very clear strategic directions:**

1. To embed bicultural education/be a culturally-inclusive school; and
2. To continue to embed a range of high-quality, effective teaching and learning programmes.

There are many other 'business as usual' and new goals on the go. Naturally our property upgrade projects continue as planned. If you'd like to pop in or send me a text/email with some of your own ideas/goals/offer of help for WAS, then please do so.

Thank you for all your continued support and encouragement towards WAS.

**Nga mihi, take care and keep safe. Andrew PB**





**Agricultural Contractors servicing Western Southland and beyond.**

**BALAGE - SILAGE - GROUNDWORK - FEED TRADING**  
**Nigel 021 226 6156 / [fowlecontracting@gmail.com](mailto:fowlecontracting@gmail.com)**

## Moroccan Apricot Chicken

### Ingredients

- 2 tablespoons olive oil
- 3 chicken breasts cut into pieces
- 2 onions, chopped
- 3 cloves garlic, chopped
- 1 teaspoon each of ground cumin and coriander
- 2 tablespoons tomato paste
- 1 teaspoon paprika
- ½ teaspoon mixed dried herbs
- 2 tablespoons sweet chilli sauce
- 1 x 400g crushed tomatoes
- 1 x 400g apricots
- 1 cup chicken stock

### Method

Preheat oven to 170°C. Heat oil in a large heavy-based, ovenproof casserole dish. Pat chicken dry. Season with salt and pepper. Brown on both sides and set aside.

Add onion and garlic to the pan. Cook for 4 mins or until soft. Add cumin and coriander. Cook for 1 min. If at any time it looks like the onion or spices are sticking to the bottom of the pan, just add a few tablespoons of water and stir with a wooden spoon.

Add browned chicken, tomato paste, paprika, dried herbs, sweet chilli sauce, crushed tomatoes, apricots (including the juice) and chicken stock. Stir, cover with a lid.

Pop in the oven to cook for 2 hours, or until the chicken is tender. Season with salt and pepper. Serve with mashed potatoes and steamed veg.



### PIGLETS FOR SALE

PORKERS/BACONERS FOR SALE

READY NOW

PLEASE PH: (03) 2266577



### CHAINSAW SHARPENING

All chainsaw chain sizes precisely sharpened and rakers taken down accordingly, guaranteed results.

**Chain only \$10**

**Taken Off & Refitted \$13**

Please phone (03) 2266940 evenings

## GREAT FREIGHT RATES

**Same Day  
Door to Door  
Monday - Friday**

- Fresh & Chilled Freight
- Meat & Vegetables
- Flowers & Chocolate
- Bottled Milk
- Prescriptions



- Vet Supplies
- Ag. & Vehicle Parts
- Hardware
- Oil & Lube
- Ammo & Chemicals

**General Light  
Freight Service  
No Rural  
Surcharge**

**Invercargill - Winton - Drummond - Otautau - Tuatapere - Ohai/Nightcaps - Riverton**

[bulletcourier8@gmail.com](mailto:bulletcourier8@gmail.com)

**027 340 5845**

[bulletcourier.org](http://bulletcourier.org)



Welcome to the November  
Edition of "What's Happening?" at...

Kia ora, Bula, Namaskaram, Aynubowan, Habari and Welcome to "What's Happening?" at Hauroko Valley Primary!

## Hauroko students in action

Term 4 is here and we have a full calendar action packed with a range of opportunities both within and outside of the classroom. Our school strategic plan seeks an innovative teaching and learning programme for our tamariki and this is indeed that time! To culminate 2020 our students continue to be creative, collaborative, challenged and critical thinkers in all areas of learning! Congratulations to HVP individual and team members who took part in the Out West Tui Tryathlon - what an event!



We've held our inter-school athletics with Waiau Area School where our 5, 6 and 7 year olds participated in a variety of fun - run, jump and throw activities. Our 8-13 year olds competed in various events including discus, shotput, high jump, long jump and 100m, 200m, 400m, 800m and for some relays. Thanks to WAS for hosting and organising our 2020 inter-school athletics challenge! Such a fabulous community event for all of our families.

HVP Pet Day is always a treat on the annual school calendar as our students bring in their pets for sharing. Highlights include the knowledge our students have of their pets including - care, nutrition, condition and tricks or skills!

The categories for creativity, innovation and design included 1. Lego creations 2. Farm scenes 3. Vege or fruit creations 4. Recycled creations 5. Three decorated cupcakes. These are always amazing to see - check out the photos on FaceBook. Thanks to our Home and School team for organising a fabulous day for our whanau and providing us with a delicious lunch. We are especially appreciative of our Pet Day judges whose expertise we call on each year bringing our community together for our children.

Thanks to each and everyone who has been supporting our Year 7&8 camp preparation for the Hump Ridge Track in November. We have completed two walks and have Bald Hill and the Hauroko Lookout to come. The Quiz on Thursday 4th November at Tui Base Camp is a highlight for the Year 7&8 students as they are involved in organising, advertising, sorting raffles and prizes, marking quizzes and scoring for teams. Cheers to Tui Base Camp for supporting this initiative we love that we can collaborate with our community. Huge thanks to our Year 7&8 students for jumping in the driving seat and to Alice Harris our Quiz Master.

Please follow us to keep up to date via our FaceBook page (Hauroko Valley Primary School) or weekly school newsletter via our website [www.haurokovalley.school.nz](http://www.haurokovalley.school.nz)

Until next time.

Nga mihi nui, Julia Waikato - Principal/Tumuaki

## Term 4 Events 2020

**November** - Discovery, Swimming, Bannockburn Camp Year 5&6, Hump Ridge Track Year 7&8, Young Einsteins, Golf Tournament, HVP Book Fair, Jonty Carran Memorial Tackle 10's,

**December** - Technology at Winton Years 7&8, Tough Kids Years 4-6, Production & HVP Prize Giving

*Always our Best/Tonu to tatou pai*

**Are you a Local Community Group?**  
**Share what's happening with your club, team or group!**

If you'd like some help putting something together - just let us know! Send an email to:

**[yourwesternwanderer@gmail.com](mailto:yourwesternwanderer@gmail.com)**

**OR** drop us a note in the letterbox outside the Toy Library, 18 Orawia Rd, Tuatapere.



by Cedric Wedderburn

After a somewhat hectic winter and circumstances around Covid-19, we are all ready for another exciting summer season. Last year was a great year in spite of the early closure. We had 560 walkers having to postpone their bookings from the last five weeks of the season, Nevertheless, we finished off with 3001 walkers and the track remained closed until the 24th October. Our staff remained in the Lodges during lockdown, slowly making their way through our expiring stock of beer and food.

This coming summer season looks really good so far, with strong bookings, mostly all domestic travellers of course. We have added some extra space over the winter, which will enable improved efficiencies for the Lodge Managers. With an ever increasing number of annual walkers and keeping an eye on the Great Walks development, one always needs to be mindful of potential bottlenecks and proactively mitigate those.

The Great Walks Project is moving forward slowly with all the necessary planning required. We expect boots on the ground later in the season, possibly around March 2021.

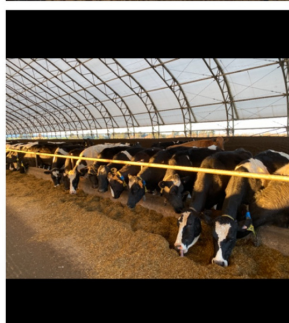
September's high rainfall has had its impact on the South Coast Track, with a number of slips and coastal erosion. Temporary detours and corrective action is in play, so the Great Walks upgrades will enable a long term solution.

**FOR SALE**

**COMPOST**  
*Get it in your garden!*

- \$50/CUBIC METER
- MADE FROM COWS  
MANURE&SAWDUST
- PICK UP SCOTTS GAP OR
- DELIVERY AVAILABLE

TEXT/RING 0278954878



Tuatapere Domain Board

## LAND FOR LEASE

Coming up for renewal is the block of land commonly known as the Girl Guide Camp on the Clifden Highway across from the Cemetery.

Part Section 5 and Section 11 Block2  
Alton Survey District.  
Being 6 Hectares more or less.

This lease is for 5 years - with one right of renewal. Rental payable by due date per annum.

**Any interested parties please contact:**

**David Norman - President,  
Tuatapere Domain Committee.**

**03 226 6502**

**or in writing to him at  
Clifden RD 1 Tuatapere 9691**

# INTRODUCING

## STREBEL STRIP TILLER WITH A KUHN 6 ROW BEET PLANTER COMBINED FRONT FERT HOPPER



### STRIP TILLER BENEFITS:

ONE PASS - SAVING YOU MONEY

LESS CULTIVATION = LESS BUGGING

KUHN BEET PLANTER IS ABLE TO SOW SWEDE & BEET



FOR MORE INFO OR TO BOOK PH:

**Kahu - 027 5183 448**



## **For Landscaping, Lane Maintenance, Gravel Supply & Cartage**

**GRADES OF CRUSHED & SCREENED GRAVELS, ALKATHENE LAYING, ROOTRAKING, FARM TRACKS, DAIRY LANES**



**K J SUTHERLAND  
GRAVELLING & AGRICULTURAL CONTRACTOR  
2475 OHAI-CLIFDEN H/WAY  
ORAWIA R.D2 OTAUTAU 9682  
Ph 0274 367 934**

**ELEVATOR SCRAPER, BOBCAT & ATTACHMENTS, LANDSCAPING, TRENCHING AUGERS**

### **Supplies of Gravel Ex Waiau River**

River Run Screened Grades Concrete Gravel Pea Gravel  
Rejects for soak holes Crushed - AP30 and AP65

Peebles for Sheep and Cattle yards and calf sheds  
Fines suitable for cow lane capping

## **K.J. Sutherland Contracting**

### **Bobcat T190**

**With attachments: Landscape Rake,  
Augers and Trencher**

**Suitable for all landscaping, shed and yard  
maintenance**

**Muck-spreader and tip trailer available**



**PHONE KEVIN  
027 367 934 / (03) 225 5716**

## **INDEPENDENT MIDWIFE**

**ISOBEL DEVERY**

*Caring for women throughout  
Pregnancy, Birth till six weeks  
Post Natal.*

*Choices for place of birth,  
Home or Winton Birthing Units  
or Kew Hospital.*

*Free pregnancy tests  
available on request.*

**Phone: (03) 22668822  
027 2267020**

## WAIAU HEALTH TRUST – November 2020

### Medical Centre

#### **Strength & Balance Group:**

We are holding Strength & Balance sessions on the 2nd Friday of every month at the Day Activities room in the previous Maternity end of the building. These are great for people to improve or maintain their mobility. Please contact reception for further information. Next session is Friday 13th November.

#### **Liquid Nitrogen Clinic:**

Our Clinic for November is scheduled for Wednesday 25th. This will be an afternoon clinic from 3-5pm. If you would like to book an appointment please contact reception, we will also accept walk-ins.

#### **Maternity Support Services:**

Commencing 22nd October we are hosting a 5 weeks workshop for young mums. This is for Breastfeeding/Parenting techniques, please contact me if you have any questions. I can pass on the details for you to register.

We are also going to organising regular coffee groups for our young parents in the near future. Please keep an eye on our Facebook page and this newsletter for updates.

Jo Sanford  
Manager

**Cell: 027 295 0429**



**Waiau Health Trust**  
**69a Orawia Road, Tuatapere**  
**Approved Registered ACC Provider**  
**Monday to Friday**  
**8:30am – 4:30pm**  
**Ph.: 2266123**

*Practitioner Hours*  
*Amanda McCracken (NP) – every*  
*weekday*

*Sheryl Eden (NP) – every Monday &*  
*Tuesday*

*Murray Allen (GP)*  
*Every Thursday*

*Liz Scott (GP)*  
*2<sup>nd</sup> Tuesday of every month*

*Physiotherapist*  
*Tuesdays & Thursdays*  
*Phone for an appointment*

*Podiatrist*  
*Visits regularly –*  
*Phone for an appointment*

*Warts/Minor Skin Lesions*  
*Liquid Nitrogen treatment available*  
*Every clinic day*  
*Phone for an appointment*

*Homebased Maternity Care*  
*We are offering this service in the*  
*patient's home. Please contact Jo*  
*Sanford on 2266123 for enquiries.*

*Day Activities Programme for*  
*the Elderly*  
*Every Tuesday & Wednesday*  
*Please phone for further information.*

*District Nursing*  
*Available as required by referral*



Hello!

Writing this months article from the Port Craig Lodge - Day 2 on the Hump Ridge Track. Any locals that haven't done the track but have thought about it, do it! The scenery is amazing! The team at the lodges truly add to an awesome experience.



Upcoming events include a live band on November 21st!

*Justin Funk Monkey with special guest  
Dave Bang Bang O'Connor.*

Keep an eye on Facebook posts for further details!

The weekly Thursday happy hour and the Sunday pool competition are still going - so pop down and join in the fun!



Hope to see you soon. ☺

[www.tuibasecamp.co.nz](http://www.tuibasecamp.co.nz)



### Upcoming Events:

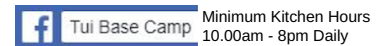
November 21st - Live Band:  
Justin Funk Monkey with  
special guest Dave Bang  
Bang O'Connor

Weekly Pool Competition –  
Every Sunday 2pm

Keep an eye on our FB pages for up  
to date events & entertainment.  
Every **Thursday Free Pool**

Courtesy vehicle available

**Phone: (03) 226 6250**



**Ryal Bush**  
**TRANSPORT LTD**

**CONTACT US  
TODAY**

**Phone 03 221 7192**

**Fax 03 221 7194**



- Excavators for general farmwork
- Laser guided drainage
- Gorse mulching & land clearing
- Lane maintenance
- Conversions
- Effluent Ponds
- Demolition
- 20 tonne bulldozer, roller, grader
- Drain ploughing & alkathene laying  
(approx 700 deep through majority of ground conditions)
- Nationwide stock cartage
- General cartage
- Bulk fertiliser cartage
- Topdressing / GPS bulkies
- Stock feed / Blower truck



# THIRSTY LIQUOR

## GET YOUR SPARKLE ON WITH OUR BANGER DEALS

**First in service**  
**THIRSTY LIQUOR**  
**First in value**

**Not Stocked** **\$15.99 EACH**  
Jim Beam Gold CC Premium 7% 330ml 6pk cans

**\$19.99 EACH**  
KGB / Cody's (incl zero) 7% 250ml 12pk cans

**\$20.99 EACH**  
Cruiser 12pk bottle range

**Not Stocked** **\$21.99 EACH**  
Jack Daniels & Cola Double Jack 250ml 10pk cans

**\$21.99 EACH**  
Woodstock 5% bottles & 250ml 7% cans (incl zero) all 12pks

**Not Stocked** **\$21.99 EACH**  
Tui Hard Soda 330ml 10pk cans

**Not Stocked** **\$23.99 EACH**  
Jim Beam Gold/CC Premium 7% 250ml 12pk DC 8pk all cans

**Not Stocked** **\$24.99 EACH**  
Woodstock Black 10pk cans

**\$25.99 EACH**  
Jim Beam & Cola/CC 330ml 10pk bottles

**NEW PRODUCT**  
**BERG SELTZER**  
The water + alcohol + a hint of berg  
**Not Stocked**  
10pk cans

**\$25.99 EACH**  
Gordon's Gin & Soda 250ml 12pk cans (pink/sicilian)

**\$29.99 EACH**  
Tui Bourbon Tui Vodka Soda 7% 18pk can range

**2 FOR \$48.00**  
Long White Vodka/ Gin 10pk can range (\$25.99 each)

**\$9.99 EACH**  
Jacobs Creek (ex Sparkling range) Five Flax range

**Not Stocked** **\$13.99 EACH**  
19 Crimes range

**\$13.99 EACH**  
Lindauer Special Reserve range

**Not Stocked** **\$13.99 EACH**  
Allan Scott (ex PN) Grant Burge Fifth Generation ranges

**\$14.99 EACH**  
Villa Maria Cellar Selection (ex PN & Syrah)

**Not Stocked** **\$14.99 EACH**  
Brown Brothers Prosecco range

**\$15.99 EACH**  
Church Road range (ex reds)

**2 FOR \$25.00**  
Canterbury Cream (\$12.99 each)

**\$25.99 EACH**  
Malibu / Kahlua 700ml (incl flavours)

**\$29.99 EACH**  
Finlandia Southern Comfort 700ml

**\$30.99 EACH**  
Absolut (ex flavours) 700ml

**\$37.99 EACH**  
Bell's / Dewar's 1L

**\$39.99 EACH**  
Larios Citrus / Rose Larios 12 1L

**\$54.99 EACH**  
Jack Daniels 1L Woodford Reserve 700ml

**2 FOR \$60.00**  
Jim Beam White Jim Beam Honey 700ml (\$31.99 each)

**\$62.99 EACH**  
Chivas 12yr 1L

**2 FOR \$70.00**  
Jagermeister 700ml Mt Gay Eclipse 700ml Highland Queen 1L (\$35.99 each)

**3 FOR \$10.00**  
Kingfisher Strong 7.2% 500ml cans

**Not Stocked** **\$20.99 EACH**  
Sol Mexican Lager 12pk

**\$21.99 EACH**  
Haagen 15pk bottles

**Not Stocked** **\$22.99 EACH**  
Orchard Thieves 12pk range

**\$23.99 EACH**  
Monteith's Classic 12pk range

**Not Stocked** **\$23.99 EACH**  
NZ Lager 18pk cans

**\$24.99 EACH**  
Lion Red, Speights, Waikato or Summit 15pk bottles

**\$29.99 EACH**  
Heineken 15pk bottles

**\$34.99 EACH**  
Tui/Export Gold/Extra Low Carb/ DB Draught 24pk bottles

**\$39.99 EACH**  
Export 33 24pk bottles

**\$39.99 EACH**  
Carlsberg 24pk bottles

**Hot Price!** **\$41.99 EACH**  
Corona 18pk bottles



100%  
**NEW ZEALAND**  
thirstyliquor.co.nz

OWNED AND  
OPERATED



FOLLOW US ON  
SOCIAL MEDIA



**ASK ABOUT**  
LOYALTY CARD  
BENEFITS &  
GIFT VOUCHERS



Available from 1st to 30th November 2020 • Specials only available whilst stocks last. At participating stores.



# Alex Reid CONTRACTING

**Paddock Cultivation from  
Ploughing to Sowing Dry Hire  
available Aerating Direct  
Drilling Ridging Mulching**



## **Dairy Lane Maintenance**

Tip Trailers • Vibrating Roller • Effluent Services

## **Sheep Conveyor**

Drenching, Vaccination etc • 3 way draft



**Rural Contractors**  
NEW ZEALAND

## **Large Skid Steer for calf shed cleaning, loading Muck Spreaders etc**

4 Muck Spreaders • 16,000 litre Slurry Tanker  
• Pond Stirrer • Umbilical Slurry System

**PH ALEX 0212775308 CELL  
03 2255377 HOME**



\* 13 Tonne Digger \* 5.5 Tonne Digger \* 2.7 Tonne Digger- dry hire or operated  
\* Tip Truck \* Bob Cat \* Augers \* Post Driver \* Tree Saw & Hedge Trimmer

\* Tree Trimming \* Post Driving \* Fencing \* Cleaning of Wintering Sheds \* Site  
Clearance \* Cartage \* Gravelling \* Lane Maintenance \* General Earthworks

For all enquiries and bookings please contact Lance or Alice Harris

Lance: 027 304 3714

Alice: 027 270 0363

Email: lanceharris533@gmail.com

Check us out on facebook- Harry's Machines

# WAIAU VALLEY SHEARING LTD



**Simon de Vries  
Julie Heaps**

**027 840 9867  
03 226 6212**

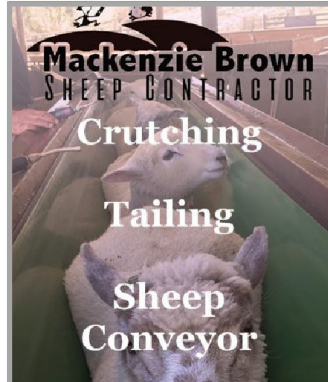


For all your Accounting and Tax Solutions

Ask for Janice or Trevor England

 **03 2266110**

Aparima Accounting Ltd  
57 Main Road Tuatapere



### Sheep Conveyor

Drenching  
Ear Tagging  
Capsules  
Vaccinating  
Pour on  
2 way draft

**Mackenzie**  
**027 9638318**



C: 0274 247 102

T: 03 225 8652

E: [admin@drakeplumbing.co.nz](mailto:admin@drakeplumbing.co.nz)

**KIERAN DRAKE**  
Certifying Plumber  
& Drainlayer



**MILLARS**

- PLUMBING
- GAS FITTING
- DRAINLAYING
- LICENSED BUILDER

Master Plumbers

Ph 027 4340 705 or 03 225 8567

### Sewing and Mending Services Available

Experienced machinist offering fast, reliable service with very reasonable rates.

I will mend/make anything from zip replacements to curtain making - just ask!

Free quotes and pick-up delivery service within Tuatapere.



Contact **Deborah**  
(03) 226 6783 or 021 0305 667



### MOUNTAINS EDGE CABINS MONOWAI



Hunting, Fishing, Mountain Biking,  
Kayaking & Tramping  
Cabin Accommodation

**12 Cabins**  
**Double and Single Available**  
**\$35.00 per person per night**

Eftpos available

Full Kitchen Facilities, Showers, Toilets, Playground  
& the Tennis Courts right across the road!

We are 'pet friendly'

[www.mountainsedgecabins.com](http://www.mountainsedgecabins.com)  
Email: [mountainsedgecabins@gmail.com](mailto:mountainsedgecabins@gmail.com)

75 Turbine Drive, Monowai. Ph. 03 225 8267

## Tea-Tree Oil Products

Non-toxic, healthier choices,  
eco-sense and "affordable".

(Botanical name Melaleuca)

Please phone Imelda (03) 226 6665 or  
email: [pelmels@es.co.nz](mailto:pelmels@es.co.nz)

## FORDE SHEARING LIMITED

Available for all new and existing clients

For all your shearing and  
crutching requirements

Please phone Darin or Julie Forde

(03) 235 8853  
027 229 7760

## Riverton Electrical Ltd

The Bright Green Sparks  
**Industrial, Commercial, Residential**  
Member of Sustainable Electricity Assoc. of NZ Inc (SEANZ)

**0274327215**

Email: [rivertonelectrical@gmail.com](mailto:rivertonelectrical@gmail.com)

Address: PO Box 10, Riverton 9847

Proud to support Western Southland - keeping it local!

**Call today to discuss your energy needs  
for the home or business**



**Specialists in:**  
Renewable Energy  
Energy audits  
Energy management  
Home ventilation  
Heat Transfer  
Dairy maintenance  
Effluent systems (Electrical)  
Preventative maintenance  
Freeview TV

Specialising in  
Dairy Conversions  
Rural Fencing  
Post & Rail



**H Gill Fencing,**  
Eastern Bush

Phone 021 225 5489

After Hours 03 225 5488

Email [hamish@hgillfencing.co.nz](mailto:hamish@hgillfencing.co.nz)





Send in by the  
**20th**  
of the month please

PLEASE HAVE YOUR ARTICLES, NOTICES, OR UPDATED  
ADVERTS FOR THE WESTERN WANDERER IN  
**BY THE 20TH OF EACH MONTH.**

SEND TO: [yourwesternwanderer@gmail.com](mailto:yourwesternwanderer@gmail.com)

We're aim to have the Western Wanderer printed  
and available the first week of each month.

## PLATE METER SERVICES

TROUGH CLEANING SERVICES

## PASTURE METER READING THAT'S QUICKER AND EASIER, WITH AT THE GATE REPORTS

- Specialist in quality pasture meter reading with advanced sensor technology
- Provide 200 measurements per second or 18,500 readings over a single 500m pass
- Provides a fully integrated electronic support system
- Provides a secure web-based storage of information with easy access
- Prompt generated feed wedges for rapid decision making and seasonal comparisons
- Generate reports at the gate, supplying valuable pasture cover data and comparable results every time
- Improve health & increase animal hydration
- Enhance production & improve water quality
- Reduce bacterial/algae contamination of trough water

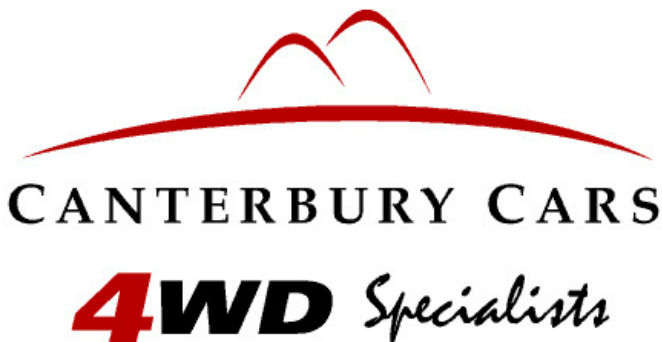
## CLEAN TROUGH WATER MEANS IMPROVED LIVESTOCK HEALTH

Now 2 bikes  
available  
for pasture  
metering



071931SPMS

Brett George • P 027 351 3408 • E [platemeterservices@gmail.com](mailto:platemeterservices@gmail.com)



For all your vehicle requirements  
Cars, utes, 4WDs, vans

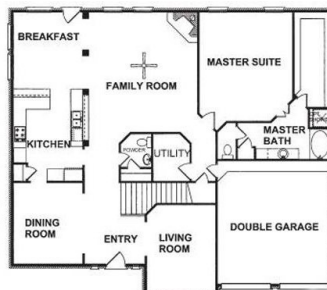
Finance available

Contact: Murray Dowling  
027 556 2655

Visit our website  
[www.canterburycars4x4.co.nz](http://www.canterburycars4x4.co.nz)

# PAUL ANDERSON BUILDER

AVAILABLE FOR ALL YOUR  
BUILDING REQUIREMENTS.  
NO JOB TOO SMALL.  
COMPETITIVE RATES.  
REFERENCES AVAILABLE!



Mobile: 027 890 3602  
[thetakis@outlook.com](mailto:thetakis@outlook.com)

# Bucket Honey Cafe

We have

- HONEY
- Great Coffee
- Homemade Pies
- Juice Bar
- Sandwich Bar
- Homemade Icecream

**Come in and try our honey!**

Phone: (03) 208-3542

16 Orawia Road, Tuatapere



## DAGWOOD DAGGING

*Available now to all new and existing customers for all your crutching requirements.*

*3 Stand or Single trailer available  
7 days a week, wet or dry.*



*No job too big or too small.*

*Competitive rates*

**Jeff Chambers**

**027 3042 241**

## SHAZZA'S HAIR BOUTIQUE

**To all my supportive clients**

As from the 30th October, the salon will be closed permanently.

It has been a decision that hasn't been made easily but thank you for all the support and for the friends I have made.

Going forward I will be doing  
**MOBILE HAIRDRESSING**  
so I can come to yours if you would like me to.

Same phone number  
**027 321 1109**

Look forward to hearing from you!





**Rabco Ag Ltd** – 021 362 766 – [admin@rabco.nz](mailto:admin@rabco.nz)  
Agricultural Contracting Specialists - Western Southland



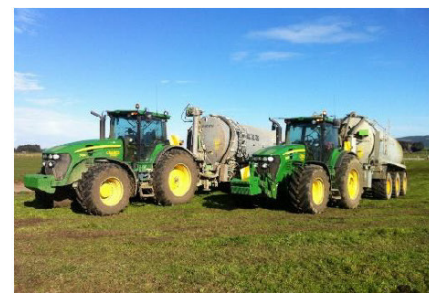
**Full silage  
& baling  
service**



**Cultivation – including Direct Drill & Precision Drill**



**Effluent – Excavators - Hedgetrimming**





We specialise in:

**Resource consents**

**Farm environmental plans**

**Policy advice**

**DOC concessions**

**Landscape plans & assessment**

We take care of the paperwork,  
so you can do what you do best!

Sonya: 027 5050 077

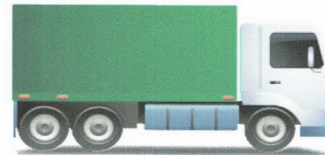
Rebecca: 027 4246 129

[www.slwp.co.nz](http://www.slwp.co.nz)

Locally owned & operated

## Tui 2 Town Freight Ltd

**RUNS MONDAY TO FRIDAY  
WEEKENDS BY ARRANGMENT**



We can freight anything from Heavy Machinery to Flowers

Plus all other general freight.  
Into or out of Invercargill

Connecting with all other freight lines.

Freight Depot is 134 Groveburn Road

**Call Eamon 027 371 8674**

Call Freight Phone: 0274 364 360

Call Stephen: 0274 346 871



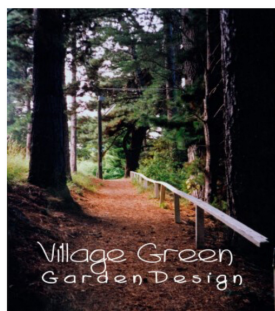
## Landscape Garden Design

What do you want  
from your garden?

Whether building new or  
revamping your existing garden  
an overall plan is essential.

**Free Initial Site Visit**

From a few questions to get  
you started, to a full landscape design.



**Village Green  
Garden Design  
Tuatapere**

**Ph Robert  
027 9241 204**

## CHAMBERS REPAIR SERVICE

**45 Half Mile Road, Tuatapere**

**Ph: (03) 226 6654**

- 24 hour Self Service Fuel
- Full Mechanical Workshop
- Agents for Wide Span Garage
- NZ Post Centre
- Your Local Fish & Game Agent

**2020 / 2021 Fishing Season Licences  
available now!**



Children Under 12 Free	Junior	\$27.00
Adult	\$133.00	Loyal Senior \$113.00
Local Area	\$106.00	Family \$173.00

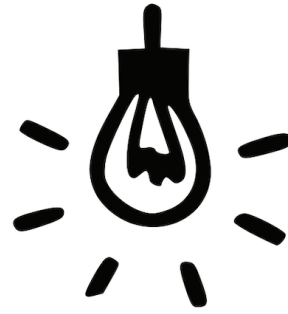
Other Licences include: Day, Short Break,  
Long Break, Winter & Non Resident



# WaterForce

Irrigation Systems  
Pumping & Filtration  
Effluent Dispersal  
Water Management

20 Winton Hedgehope Highway, Winton  
03 236 9805 [www.waterforce.co.nz](http://www.waterforce.co.nz)  
**0800 4 FORCE (4 36723)**



## Registered **ELECTRICIAN**

For all electrical work  
*No job to small*  
A/Hours service available

Jay Brownlee  
8 Carlyle Street, Tuatapere 9620  
A/H 03 226 6673  
Mob 027 4965 863  
[sparkieintuatapere@gmail.com](mailto:sparkieintuatapere@gmail.com)



### LOCAL BUILDER AVAILABLE

Experienced & Licensed. Free Quotes.  
References available.

**Phone Aaron today**  
**(03)973 6742 or 027 252 7933**



## WESTERN ELECTRICAL

2008 LTD

Electrical Solutions

Domestic | Industrial | Commercial

**Quality Service at Competitive Prices**

- New Builds, Rewiring & Alterations
- Dairy Shed, Farm & Industrial Maintenance
- Hotwater Element Replacement
- A/H Call Out Service Provided



**Ph 03 225 8974 / 027 439 3787**  
**Fax 03 225 8973**

## **TUATAPERE SERVICE STATION**

**20 ORAWIA ROAD**

**PHONE: 03 2266475**

## **FISHERMEN COME IN FOR A BROWSE WE HAVE IN STOCK**

**Rods, reels, sinkers, hooks, lures, line, knives,  
nets, waders, sawdust**



### **WE CAN PROCESS ALL YOUR**

**REGISTRATIONS**

**ROAD USER CHARGES**

**CHANGE OF OWNERSHIPS**

**VEHICLE EXEMPTIONS**

**CANCELATION OF REGISTRATION**

**CHANGE OF HUBOMETERS**

## **HARDWARE IN STOCK**

**Nails, screws, tec screws, bolts and nuts, dyna bolts, pulleys,  
karabiners, hinges, padlocks, rope, chain and much more**

## **WHITEBAITERS**

**We still have plenty of well made nets in stock at very reasonable prices. We  
also have screens, waders, mesh netting, ulstron netting, rope, chain and  
much more**

