

Waiau Gazette

Clifden, Otahu School Jubilee Next January

Plans are well advanced for the celebration in January, 1970, of the 75th jubilee of the Clifden and Otahu Schools. The celebrations, which will be held on the week-end of January 9 to 11, will include a grand ball, roll-call, and a banquet. The jubilee will conclude with a combined church service on the Sunday.

As one of the oldest districts in the Waiau area, this jubilee is of special interest. Included amongst the guests of honour will be a first-day pupil, Mrs J. Stanford Snr., a descendant of whom will also be the youngest present-day pupil.

The district is fortunate in having residents available who can still recall the "good old days" and many choice items of interest have found their way into the school's growing archives.

The Gardner brothers of Clifden tell of their father's unusual pets—emus—brought to New Zealand originally by immigrants from Australia and purchased by Mr Gardner at a clearing sale.

The birds were railed to Tuatpere and transported by wagon to Clifden, reaching home after dark. Because of the hour the emus were unloaded into a paddock handy to the homestead and left until morning, unbeknown to the rest of the hands on the farm.

Next morning as the mists slowly lifted and grey dawn came up, so did the rabbit on his early morning rounds. The homestead was awakened suddenly as his pounding fists beat on the door of the house and his frenzied yells of "Moas, moas!" echoed against the cliffs.

Mr Gardner must have been very pleased with his joke.

We are told that the great birds soon settled down but continued to be as curious as ever as they followed like dogs behind whoever entered their paddock, giving many visitors some anxious moments. Horses were especially afraid of the birds, and one old resident who had habitually taken the short cut from the Lilburn Road to the bridge changed his route promptly after being taken for a joyride around the field as his horse bolted in fright, paced by two very interested emus, curious no doubt as to who possessed the greater speed. When the horse was finally persuaded to pull up, the driver lost no time in heading for the main track while the owners held their sides with laughter.

Unfortunately, the birds were not a pair, although they made an annual ritual of build-

ing a nest of stones and sitting on it. Their end was as untimely as it was sad. A quiet old mare foaled in the paddock and the emus' curiosity got the better of them. They came up to examine the new arrival and the mother lashed out at them in a frenzy of fear, kicking both birds to death with her hooves.

A remarkable end to a remarkable story, one of many which no doubt will be re-told with zest as old residents return to the district for the school's celebrations.

Civil Defence Extended To Tuatpere

The Tuatpere district is to have a civil defence organisation.

This was decided at a meeting in the township recently, called by the Wallace County Council.

The meeting was chaired by Mr S. L. Kokay, the Waiau riding member of the council.

The county clerk, Mr J. A. R. Walker, explained what civil defence would involve and the deputy county clerk Mr E. I. R. McCartney, explained the billeting and emergency equipment schedules which had been prepared by the council and were now ready for distribution.

Local bodies and departments represented at the meeting were the town council, fire brigade, Education Department and Post Office.

Officers elected were: Area controller, Mr S. L. Kokay; deputy area controller, Mr R. J. Bloomfield, chief warden, Mr R. J. Shepherd; deputy chief warden, Mr E. A. Brown; welfare leader, Mrs S. L. Kokay; first aid warden, Mr G. B. Thomson; deputy first aid warden, Mr R. M. Freeman; rescue leader, Mr K. W. Lindsay; deputy rescue leader, Mr J. A. Walker; supply leader, Mr J. A. Kenneally.

STEVE KOKAY'S TRAVELS ABROAD

THE TOKYO EXPRESS

The fast express in Japan, going from Tokyo to Osaka, a distance of 344 miles, is generally referred to as the "Bullet train." It does the journey in 3 hours 10 minutes. The time includes a dozen stops between Tokyo and Osaka. Actually the train averages 120 miles per hour when travelling.

This train is the most comfortable train in the world. I do not know a train anywhere that may even come a close second to it. Thousands of engineers from all parts of the world come to Japan to study this train to learn from it and the marvellous engineering skill that made it possible.

I have travelled on a number of times now, but you do not get perception of speed on it. Certainly nothing like the speed it is doing. The only time you may feel a sensation of speed is when you are going through a tunnel. There are 66 of these tunnels and they are lit up with fluorescent tubes.

It is only when you see these lit-up tubes shoot past your window like tracer bullets in less than 1000th of a second you really feel the speed you are travelling at. Sitting in the train and looking through the wide landscape windows you cannot judge your speed at all. I have been ready several times to take a bet that the train is not doing much over 60, but the train is actually doing twice that, but you cannot perceive it for several reasons.

First is that you are sitting in plush comfort. The lines are built up for flood protection and you are sitting higher up. The lines have no joins in them and there is no wheel clatter. On every sleeper there is a rubber pad between the sleeper and the rails. Also every carriage is independently motorised, so there is no coupling jerking at any time, either starting or stopping.

There are two classes on the train. First-class is nearly twice the cost of second. I tried both classes and I enjoyed second-class best, but only because it is more crowded and it was here that I could meet the common Japanese people, mix with them and learn more about them.

They are very easy to approach and quite ready to accept you when you treat them as your equal. On the train all kinds of confectionery are sold. Also liquor of all kinds—santary beer, saki (rice-wine),

brandy, whisky etc. This is all brought to you on trollies by little young Japanese girls.

For drinking, there is no age restriction. It looked to me as if anybody can buy all he wants. There is also a dining car which is the last carriage on the train. They serve a very nice variety of meals, all Japanese of course.

NO DRIVER

I said last month that there is a driver in this train. Well, that is true. It is completely controlled by computers from Tokyo. The line is a double one, that is, the train never returns on the same line, completely eliminating any collisions. The computers automatically reduce the speed when coming to a curve, also when entering each of the 66 tunnels. When approaching a station it automatically slows up from the right distance and stops at exactly the right place.

In case you should be scared to ride on it, you may be reassured by the fact that there is a man sitting in the front just as a human eye. He is there to take over in case some freak of nature occurs such as an earthquake, flood, fire etc.

Should I have conveyed to you the impression that there is only one "Bullet train," I did not mean to do that, because a "Bullet train" leaves Central Tokyo station every 15 minutes. Between Osaka and Tokyo, those two cities included, there is a population of about 40 million. As it is fast becoming beyond the capacity of these trains to adequately cater for such large numbers, the Japanese have now completed plans for a new type of faster train that will do up to 200 mph.

MONORAIL

Just a word now on the monorail train, which is also in Tokyo. The monorail can do up to 160 mph but this is just a short line from the centre of Tokyo to the airport, a distance of 20 miles. It did not pay at the start because just before the Olympic Games, Tokyo built several elevated super highways and reduced the demand on the monorail. However it is coming back into its own now.

(Next month's article will be on Mikimoto's pearl island. The most interesting and beautiful island in Japan.

Steps To Avoid Forest Fires

The New Zealand Forest Service asks all farmers to ensure that fires are kept within their own boundaries. If ever reporting forest fires, please ring your local exchange and ask for the fire duty officer of the New Zealand Forest Service.

Fire permits must be obtained from the New Zealand Forest Service office before lighting a fire if your farm is within one mile of state forest or within the rural fire district. Information regarding your farm position may be obtained from the forest service.

Have you got your permit yet?

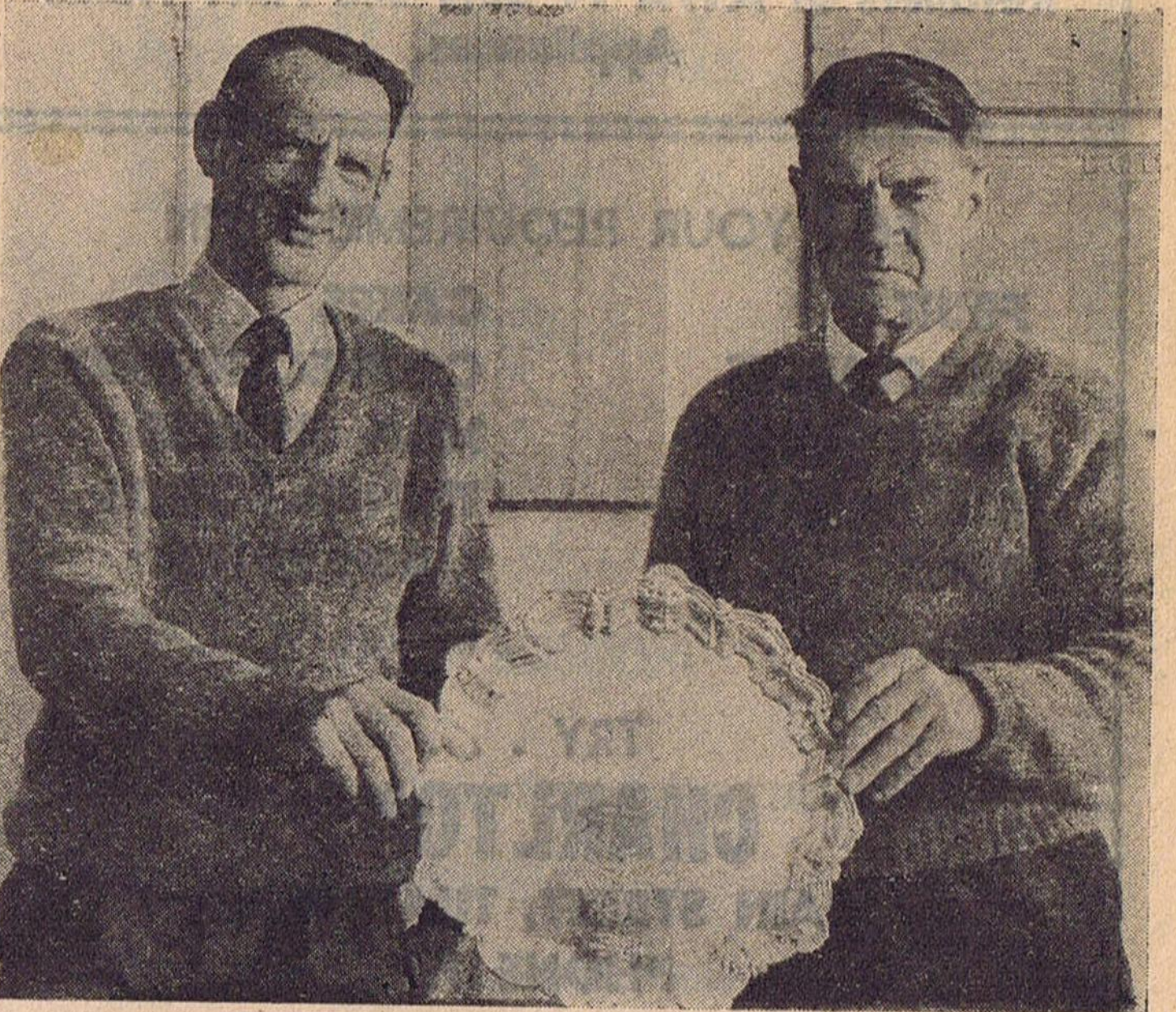
NEXT ISSUE.

The next issue of the Gazette is due out on **FRIDAY, DECEMBER 19.**

All copy of news items and advertisements must be in by **MONDAY, DECEMBER 8.**

FRIDAY, NOVEMBER 22, 1969. Volume 1. No. 8.

National Golf Trophy To Tuatpere



BILL McPHERSON and Charlie Knowler with the Hamilton RSA salver won at the recent National RSA golf tournament held at Invercargill and Winton during Labour Day week-end. The salver is held for one year by the winners of the junior foursomes championship.

RECENT GOLF TOURNAMENT WINS



STUART McPHERSON and Bill Walker with cups won for gaining the best nett aggregate score—in all grades—at recent golf tournaments. Stuart won the McGregor Memorial Cup at the Ohai tournament, and Bill won the Ossie Grant Memorial Cup at the Nightcaps tournament.

Tuatpere Caledonian Pipe Band In Sound Position

The annual meeting of the Tuatpere Caledonian Pipe Band was held on November 5 with a modest attendance of bandmen and supporters. The balance-sheet revealed a good cash reserve which should help in the re-lining of the bandroom and provide a nucleus for new uniforms.

Two long serving members relinquished their positions. Mr George McKay retired as president and Mr Roy Campbell gave up the office of pipe-major. Suitable tributes were paid these officers for their long and valued service.

Principal officers elected were:—

Patron, Mr W. S. Buchanan; president, Mr W. C. Love; vice-president, Mr S. R. Harris; secretary, Mr E. A. Peek; committee, Messrs G. McKay, H. Carr, D. Johnson, J. A. Bennet and J. M. Buchanan.

Band officers: Drum major, Mr John Harvey; drum sergeant, Mr Jas. Evans; drum corporal, Mr Alex Lyon; pipe major, Mr Val McKay; pipe sergeant, Mr M. Torbet; pipe corporal, Mr T. Bryan.

Tentative arrangements were made to hold a haggis night early next winter and for the

annual highland ball on July 10.

The committee wish to notify any young men that there are vacancies for piper and drummer trainees. All enquiries will be welcome and should be made to Pipe-major Val McKay who will give any information required. The band is part of this district, and although there are a number of active bandmen present, a constant intake of recruits is necessary to maintain the strength of the organisation.

Any organisation needing the services of the band will receive a sympathetic hearing. Please notify the secretary well in advance so that proper arrangements can be made.

New Picnic Area Planned

At a recent meeting of the Tuatpere Lions Club a decision was made to provide picnic and toilet facilities on the western bank of the Rowallan bridge.

This scheme will be financed with the profits from the Lions caravan which operated on the beach during the toheroa season.

Tuatpere Has Much For Tourists, But—

With the road through from Te Anau, Tuatpere could become a "must" for the tourist with attractions such as toheroas, whitebait, flounder, trout fishing and deer stalking for the sportsman; the lovely beach at Bluecliffs and the beauty of the bush.

Tuatpere has what it takes to attract the tourist, but what are we doing about it?

Lake Hauroko is a great attraction, but what is be-

ing done? When reaching the lake, tourists find there is a notice board advertising boat and fishing trips, but where and when are they? The lack of a time-table or anyone in attendance there is turning visitors away. Bookings can be made at the Waiau Hotel, Tuatpere, but it has been known that although bookings were made no one has turned up to take the boat out, and the people have had a wasted trip to the lake.

The licence for the char-

tered boat service on the lake was issued by the Fiordland Park Board. Is it not time the board looked into this and gave some one who is prepared to run an efficient service for the public an opportunity?

Tuatpere has a great potential. Let us make the most of it. Attract the tourist—don't sit back and wait for them to come and then find that some other centre has captured the tourist trade. Make Tuatpere a "must" for all tourists.

ELECTRICAL CONTRACTING

IS OUR SPECIAL FIELD.

INSTALLATIONS & MAINTENANCE
EXPERTLY CARRIED OUT.

**ALL SIZES OF ELECTRIC MOTORS AND
STARTERS AVAILABLE.**

Commercially made Switchboards of any size.

Radio-Telephone Unit ensures instant communication.

D. R. GIBBS LTD. - PHONE 137

Retailers of AWA TV Sets and HMV Home
Appliances.

FOR YOUR REQUIREMENTS IN

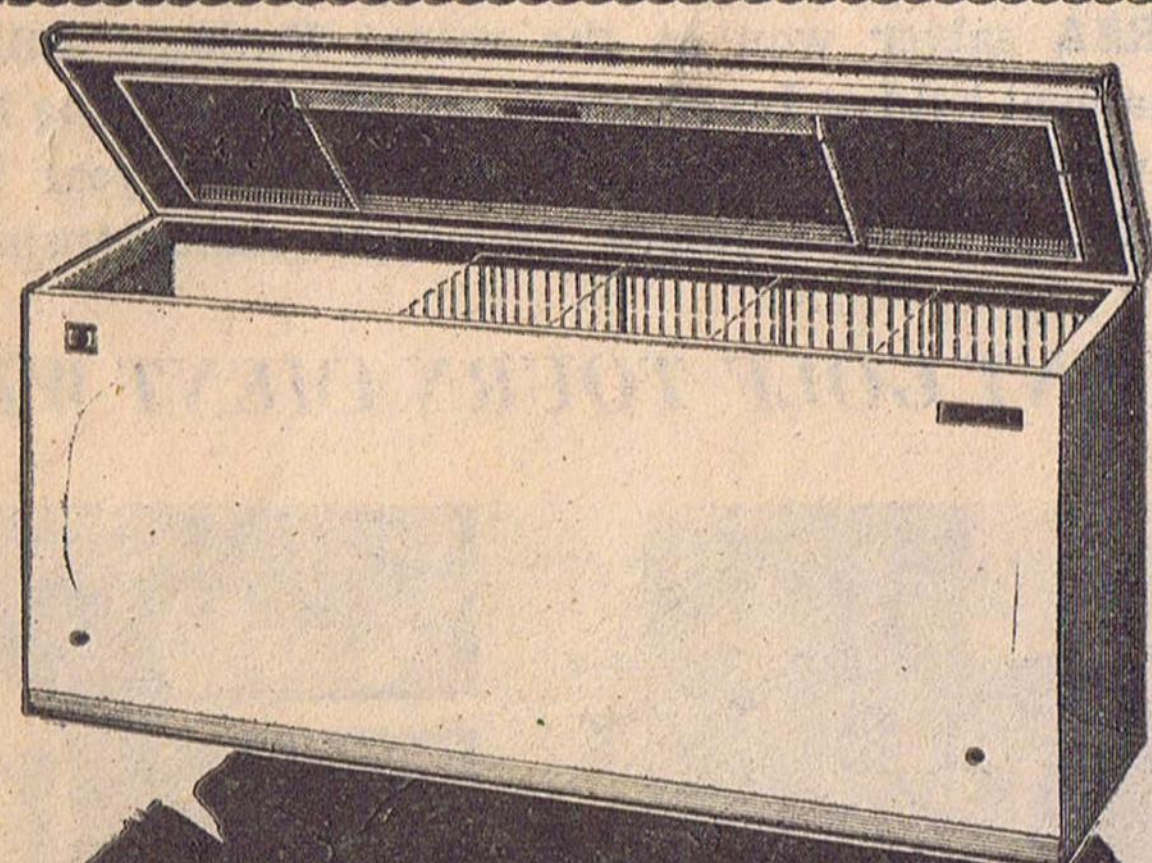
**FRUIT
VEGETABLES
SOFT DRINKS
ICE CREAM
BUNS
PIES**

**CAKES
CONFECTIONERY
MILK SHAKES
TINNED FOODS
MAGAZINES
Etc.**

TRY . . .

CHARLTONS

MAIN STREET, TUATAPERE.
PHONE 17.



*best value per
cu.ft. of freezing
space... now
six models*

BONaire

Choose from the exciting BONaire range:
6.21, 11, 15, 19, 21 and 27 cu.ft.
Buy better . . . better buy BONaire. Now
on display at

Faulkner and Devery

1 Ferry Street. Phone 106M.

SOUNESS & LAWRENCE LTD.

(RAY LAWRENCE)

For

TOUGH GUY JEANS

JOCKEY UNDERWEAR

LICHFIELD SHIRTS

Fairy Down Sleeping Bags

All Sleepwell Products

D. T. KING & CO. LTD.

GENERAL CARRIERS.

CONCRETE BLOCKS. BULK SPREADERS.

AGENTS FOR McKIMMING'S PRODUCTS.

Any description of Carrying Done.
Buildings removed to any part of the Island.

SEPTIC TANK CLEANING.

Pukemaori — Phone 889 Orawia.

Estimates Approved By County Town Committee

At the recent meeting of the
Tuatapere County Town Com-
mittee held on October 14, the
following items were approved
for expenditure within the cur-
rent year's estimates:—

	\$	Faulkners	950
Street Maintenance	1,900	Boundary Creek flooding	150
Street Lighting	450	Orawia Road—kerb and	
Township Wks (non-sub)	1250	channel	2,500
Fire Brigade	270	Birch St—kerb and channel	
Sanitation	1,300	and stormwater	230
Ferry Rd—seal street flank	300		
Half Mile Rd—seal		TOTAL	9630
street flank	330		
Cliffden Rd, kerb and chan- nel and seal footpath to			

First Jet-boat Rally On Waiau Also The Last

The waters of the Waiau
were well churned up on Sun-
day when over 100 jet boats
from all parts of the South
Island gathered for what has
been acclaimed as the world's
biggest rally yet for boats of
this type.

In ideal conditions (some
would say "just the usual at
this time of the year") the
boats made short work of the
voyage from Manapouri's Pearl
Harbour to the sea and back.

A barbecue meal for owners
and their families was a high-
light of the occasion. It was
held on the property of Mr S.
A. Allen at Motu.

But the day was not without
its sadder side, for the Waiau
flow will soon be so low that
such rallies will be an impos-
sibility. In fact, Sunday's would
be the first and last on such
a grand scale.



A PAT ON THE BACK FOR

GARY BENNETTS, who has
been awarded the title of Jun-
ior sportsman of the year at
St. Kevin's College, Oamaru.

Cautionary Tale

This poem is the original work of an eight-year-old
pupil.

The chief defect of Martin Mesk
Was making messes in his desk
At first his messes were just small
A bat, a boot, a cricket ball,
A notice about an open day
(His Mum did not know what to say!)

His messes started to get bigger—
Diving for books just ruined his figure.
It's quite a mess you will agree
Open his desk and you will see:
A bat, a boot, a cricket ball,
A blood-stained hanky from a fall,
A brick from off the garden wall,
A picture of a drunken brawl,
Bits of paper, bits of cotton,
Play lunch apples going rotten,
Bark from off a rimu tree,
Honeycomb that's from a bee,
A notice about an open day
(His Mum did not know what to say!)

Things were getting rather tough,
But still for Mart, it's not enough.
One day when looking for a book
He hopped right in to have a look.
He came upon to his dismay
A notice about an open day,
Honeycomb that's from a bee,
Bark from off a rimu tree,
Play lunch apples going rotten,
Bits of paper, bits of cotton,
A picture of a drunken brawl,
A brick from off the garden wall,
A blood-stained hanky from a fall,
A bat, a boot, a cricket ball
Some bubble gum, well chewed and blown,
Some orange peel, a cherry stone,
A story about Captain Cook—
Alas, he could not find the book.

He found that he had lost his way.
Inside the desk he had to stay
With blood-stained hanky from a fall,
A brick from off the garden wall,
A picture of a drunken brawl,
Bits of paper, bits of cotton,
Play lunch apples going rotten,
Bark from off a rimu tree,
Honeycomb that's from a bee,
Some bubble gum well chewed and blown,
Some orange peel, a cherry stone,
A notice about an open day
(His mum did not know what to say!)

The moral of this story is:
Don't put bottles full of fizz,
Don't put apricots or peaches,
Or cheeky drawings of the teachers,
Bat, or boot, or cricket ball,
Blood-stained hanky from a fall,
A brick from off the garden wall,
A picture of a drunken brawl,
Bits of paper, bits of cotton,
Play lunch apples going rotten,
Bark from off a rimu tree,
Honeycomb that's from a bee,
Bubble gum well chewed and blown,
Orange peel or cherry stone,
Or notice about an open day
(Your Mum will not know what to say!)

Inside your desk
Like Martin Mesk!

READERS!

**SUPPORT THE ADVERISERS WHOSE
INITIATIVE MAKES THIS NEWS-
PAPER POSSIBLE**

County Briefs

Tuatapere Hall. — The ap-
pointment of Mrs T. M. Leon-
ard as hall caretaker was con-
firmed at the same salary as
applied under the previous com-
mittee's arrangement, to be ef-
fective from 1st July, 1969, con-
ditions to include cleaning, the
custody of hall, bookings and
collection of rentals as required.

Alton Terrace.—Advice was
received that in view of the
unfavourable weather condi-
tions, it has extended the time
for clearing work on Alton
Terrace to November 30, 1969.

Stormwater Drainage, Half-
mile Road.—Proposal to drain
stormwater from property at 32
half-mile Road into the gravel
pit by means of a pipe drain
through adjacent properties was
approved, subject to provision
being made for drainage from
the adjoining section to be link-
ed to the scheme.

Town Planning.—Draft plan
for Tuatapere County Town was
presented for preliminary dis-
cussion and deferred to next
meeting for further considera-
tion.

Parking Area. — It was re-
solved that a letter of appre-
ciation be forwarded to the For-
estry Department for the sup-
ply of ornamental trees recent-
ly planted on the railway boun-
dary to screen the yards from
the shopping area.

Tuatapere Water Supply. —
The clerk was authorised to
have the consulting engineer
bring an up-to-date estimate of
cost of providing a reticulated
water supply to cover the whole
township with a view to plac-
ing the proposal before the rate-
payers.

Boundary Creek Flooding.—
Report on the flooding prob-
lem at Boundary Creek, with a
recommendation from the
Southland Catchment Board
that a gap in the stop-bank be
closed at an estimated cost of
\$150, was received and authority
granted to include this work
in proposed expenditure for the
year.

Tricky Wind Marred Clay Bird Shoot

In connection with the recent
Tuatapere Fire Brigade gala
day, the local Clay Bird Club
conducted a shoot, and a hand-
some challenge cup and shield
were competed for. Conditions
were made very tricky by the
wind which kept the clay tar-
gets low and moving fast over
the river.

Results.—

A Grade.—10 bird; D. Mar-
shall, J. Diack, J. Hawkins, W.
J. Diack 10 each.

A Grade.—Single Barrel; J.
Eden, W. J. Diack 9, D. Mar-
shall 8. Sparrow: W. Todd 10,
J. Diack, J. Gorton, W. J. Di-
ack, J. Eden 9. Double Rise: S.
Richards 9, J. Diack, J. Eden, A.
Diack 8.

B Grade.—10 Bird: A. S. Di-
ack 10, J. Whyte, T. Green, R.
Pay, A. McDonald 9. Single
Barrel: G. Muir 9, R. Pay 8.
Sparrow: J. Whyte 10, A. S.
Diack, R. Pay, D. Peek 9.
Double Rise: J. Whyte 9, R.
Drake 8.

The challenge cup for the
day's aggregate was won by J.
Eden (Otautau) and the shield
by A. S. Diack. Another trophy
was won after a shoot-off with
A. S. Diack by J. Whyte. The
club is grateful for the cup and
shield, both of which were do-
nated by the Tuatapere Fire
Brigade.

At the conclusion of the shoot
Mr Steve Kokay presented the
trophies.



For all your

N-Z-I

**INSURANCE REQUIREMENTS
FIRE - ACCIDENT - LIVESTOCK
NEWS EXTRA!**

All classes of LIFE INSURANCE are now
available at very attractive rates.

Your District is serviced regularly by our
Representative and our TUATAPERE AGENT—
W. R. LANGMUIR & CO., Phone 6.

Who are always at your disposal to provide prompt
and efficient service for your requirements.

INVERCARGILL BRANCH:

53 ESK STREET. PHONE 3149.

R. G. CONDLIFFE, Manager.

KEEP THE HOME FIRES BURNING WITH COAL

FROM

**ZEPHYR TRANSPORT
CO. LTD.**

**THE SPECIALISTS IN THE CARTAGE
OF STOCK, LIME, COAL, ETC.**

PHONES:

Depot, 78S.

A. J. Bennett (Manager), 78M,

and A. J. Bennett, 78D.

PROSPERITY?

(contributed by "M.")

They'll harness the mighty Waiau soon, change her course to the sea,
Man against nature once again, for this so-called prosperity.
Destroy the beauty of Manapouri, forest-fringed gem of this land,
Flood the valleys around her shores, leave tall trees like tomb-stones stand,
Planned by man who never thought, Is it just that such beauty should die?
Never roamed in this hinter land, where wonders of nature lie,
Never paused in their busy life to listen or to look,
To a river bold, at a lake serene, sought the peace of a forest nook,
Never heard a bellbird choir ring out in a valley at dawn,
Glimpsed sunlight on a mountain range, through the mists of early morn,
Gazed at the splendour of bush orchids massed 'bove a carpet of coolest green,
Clematis white, kowhai bright, the blaze of rata's sheen.
Worshippers at their shrine of prosperity—to them all else spells defeat.
They have no thought of posterity and its millions of tramping feet,
No thought that this land is a heritage, ours to guard, and to keep
Safe, so that those who follow may treasure it when we sleep.
What of we who have known the west, it's grandeur, peace and charm?
What have we done to defend all this from thoughtless and wanton harm?
Worshipping at our shrines of apathy, selfishness and live for today,
How many have heard the clarion call: "protect while yet you may!"
Do you feel the scorn of the pioneers, and that phantom soldier band?
Where must posterity lay the shame, for the rape of this virgin land?

OVER THE FENCE

From Peter Daly

So we are back at the quota watching game, as far as meat exports to the United States are concerned.

Big meat exporting countries such as Australia and New Zealand will have to cut back shipments to the United States more sharply than they did last year at this time if they want to avoid quotas.

The United States Agricultural Department said recently that meat imports subject to quota law in September were 121 million pounds, making a

nine-month total of 855 million..

Under the law, imports can total 1087 million pounds this year before quotas are automatically triggered.

This leaves only 222 million pounds which can be received between October 1 and December 31, compared with 233 million actually imported during the fourth quarter last year.

It is easy, of course, to say that we should regulate exports so as to avoid this up and down, stop and go policy. Of course we should. But beef production in New Zealand is seasonal, and until we re-orient our produc-

tion will remain so.

In short then, it is more and more obvious that we must be prepared to produce all the year round. Everything, Meat, butter, cheese and all the rest too. How?

By supplementation of course. Grain is the obvious first supplement, and this means a much more flexible, much more integrated farming industry than ever before. It also means more production.

It will make our present relatively clumsy system of hill countrymen breeding sheep, using them for a few years and then selling them to the fat lamb farmer, look like the engineering of 20 years ago compared with the sort of technology required to put men on the moon.

It will mean big farms, corporation farming and the rest too. And the Lands and Survey Department had proved, just recently, and for years past if one likes to be open minded about it, that we can do it, and that New Zealand is admirably suited to it.

A scheme to test the protein content of milk produced by the progeny of young bulls that are being evaluated for possible use in its artificial insemination stud is to be introduced by the Milk Marketing Board of England and Wales.

Initially it is expected that about 40,000 tests a month will be made. Later the service may also be offered to all dairy herd owners whose cows are officially recorded.

Give the bees a chance!
The Department of Agriculture has a reminder for seed producers and others directly concerned with applying insect control treatments to any cruciferous or leguminous seed crops.

During the period that began on September 1 and ends March 31, it is required of growers or contractors that they obtain a permit before applying any insecticide toxic to bees to any cruciferous or leguminous crop in flower; or containing any flowering plants (not necessarily crop plants) in sufficient quantity to attract foraging bees.

The seed crops usually involved include brassicas (such as rape, chou moellier, turnips, and swedes) and legumes (such as clovers, lucerne and lupin) liable to become infested with aphids or the case-bearer moth or both.

Control of these pests usually necessitates the use of insecticides. These materials applied judiciously to crops in flower can cause severe bee mortality. Sprays applied to fruit trees in spring to kill insect pests can be just as fatal to bees, the Department of Agriculture reminds home orchardists.

Care is taken by the commercial orchardists that their sprays do not interfere with the pollination service provided by bees, and hives are often placed in orchards to improve pollination. Home orchardists are probably less conscious of the danger of putting poisonous sprays on when bees are fathering nectar from fruit tree flowers.

ECHOES FROM THE PAST

NOVEMBER, 1914: STOCK SALE REPORT.

The dry weather that has been prevailing during the last few weeks in North Otago and South Canterbury has already shown its effects of a droughty summer two seasons ago.

Anyway, from that or some other cause, the demand for store sheep lately has greatly slackened, although the reports from the northern provinces indicate that not only is there a shortage of sheep but an abundance of food.

The fat sheep market, however, if anything is slightly firmer and at Wallacetown on Tuesday, with a fair entry, fat wethers in the wool (not extra heavy) fetched 26/6, medium sorts 22/- to 25/-, and a pen of very heavy weight ewes in the wool 26/-, while shorn wethers bought from 16/6 to 19/-.

The current rate of store sheep is as follows: Paddock bred ewes and lambs (2 and 4th) 13/- to 14/- all counted, sound-mouth station ewes (March delivery) 13/- to 15/6, lambs do with 5 or 10 per cent rejection 9/- to 10/-.

Cattle.—Just now there are a few lines of fairs offering in the country, but small lots come dribbling in to Wallacetown and help to keep prices down. Last Tuesday this was the case, several butchers being supplied privately. The market

was not strong, the average price of prime ox beef being from 34/- to 35/-, cow beef from 27/- to 30/-. The store market however, is very buoyant and comparatively healthier than the fat. Three and four-year-old steers £7 to £9, two-year-old steers £4/10/- to £7, yearlings £3 to £4/10/-, calves 30/- to £3, heifers from 10/- to 20/- less.

APPEAL FUND VERY SLOW

The recent appeal for cemetery funds has met with a slow response. Although donations are still being received the result so far is disappointing. To those people who have contributed a sincere thank you.

The cemetery trust feel that many persons will still wish to answer the appeal and it looks forward to receiving further donations.

A working bee will be held at the cemetery on Saturday, December 6, for the purpose of having a general clean-up. Anyone who is prepared to help is requested to contact the chairman, Mr Bert Norman (phone 71U).

W. R. LANGMUIR & CO.

For all your

TROUT FISHING REQUIREMENTS

Mitchell Reels and Nylon

Kilwell ABV Rods

Landing Nets

Fishing Bags

Waders

Large selection of

Baits and Lures.

Remember: We Specialise to suit Local Conditions.

Support the Advertisers!

THEY MAKE THIS PAPER POSSIBLE.

SHOP IN TUATAPERE ALWAYS.

I buy out of this town.

You buy out of this town.

We all buy out of this town.

What will happen to this town?

On Sale

Wednesday, November 26 —

MATCHBOX TOYS
MATCHBOX TOYS

LIMITED SUPPLY — BUY EARLY
ALSO...

We have a good range of CHRISTMAS CARDS. Buy early and have the best selection.

TUATAPERE STATIONERY
(DAVID & ASHLEA MILL)
PHONE 157

Now you can use

The Gazette

As

The Notice-Board Of Waiau

Sports Clubs, Women's Organisations, etc., will find it cheap to advertise Meetings, Dances, Socials and other Notices in Waiau's own newspaper.

IT COSTS ONLY 60 CENTS
PER SINGLE-COLUMN INCH

To get your advertisement into every Home in Tuatapere and District.

ENQUIRIES —

PHONE 157

(TUATAPERE STATIONERY)

TUATAPERE STORES

16oz FRUIT SALAD	28c	Our Price 25c
30oz FRUIT SALAD	46c	Our Price 40c
12oz 'Skippy' Cornflakes	33c	Our Price 28c
16oz PEARS	24c	Our Price 21c
30oz PEARS	38c	Our Price 33c
30oz MING APRICOTS	46c	Our Price 33c
Robinson's Vitamin Orange	55c	Our Price 45c
ROBINSON'S CORDIAL	45c	Our Price 37c
Goddard's SILICONE WAX	55c	Our Price 45c
JOHNSON'S PLEDGE	78c	Our Price 65c
15oz Twinkle CAT FOOD	24c	Our Price 18c
15oz Twinkle DOG FOOD	24c	Our Price 18c
ZEST PLANT FOOD	53c	Our Price 43c
GARDEN DOCTOR	59c	Our Price 38c
Q-TOL 4 OIL SHAMPOO	47c	Our Price 38c
Scrubb's Lemon Detergent	35c	FREE

CUT OUT FOR REFERENCE.

ORDER NOW XMAS CAKES & XMAS PUDDINGS

REG ROFF

PHONE 8454 OTAUTAU (COLLECT)

Order your CHRISTMAS MEAT

From

REG ROFF

FREE DELIVERY.

PORK, POULTRY, LAMB, HOGGET, TURKEYS,
GEESSE, DUCKS, CHICKENS.

HAM

MUTTON HAMS FROM \$2.00

PRESSED HAM

CHRISTMAS HAMS & HALF HAMS.

Remember — we will cook your

Ham free.

HAUROKO SERVICES

(DONN & MURIEL DICKENS)

STOCKISTS OF

ICE CREAMS
GROCERIES
FILMS
PETROL AND OIL

ALSO A LARGE
RANGE OF

SOUVENIRS
COLOUR PRINTS AND SLIDES
SEMI-PRECIOUS STONES
LOCALLY MADE POTTERY

WE SPECIALISE IN

LIGHTWEIGHT FOODS for Deerstalkers
and Trampers.

HIGHEST PRICES PAID FOR

DEER, WILD PIGS AND SUNDRIES

CHRISTINE COFFEE LOUNGE

(David and Bernadette Harvey)

OPEN 7 DAYS A WEEK!

Monday-Thursday: 9 am to 9.30 pm.
Friday-Saturday: 9 am to 11 pm.
Sunday: 9 am to 6 pm.

HOT MEALS SERVED AT NOON.
LIGHT MEALS ANY TIME.

PIES - SANDWICHES - HAMBURGERS

HOME-MADE CAKES

SOFT DRINKS - ICE-CREAMS - MILK SHAKES

AND ALL LINES OF CONFECTIONERY

— SUNDAY NEWS & SPORTS NEWS —
Now on display our full range of **Chocolates**
and **Biscuits** for Christmas. Call now and
make your choice.

PHONE 99

County Corner

Our special meeting on October 10 to consider the allocations of subsidised work program in the nine ridings for 1970/71 and subsequent year is each year the most important meeting but also the most difficult one.

The root of our difficulty in the first place is that we do not have enough monies for sealing. The less than \$100,000 available to us is so little that were this money equally divided among the nine ridings it would mean less than a mile of sealing in each riding. Sealing such a short distance has proved itself far too costly and a waste of rate money.

We resolved some 12 months ago that we would do our sealing in about two to three-mile stretches and this is where we are faced with our biggest problem: Which roads will be done? In which riding? And which ridings are going to be left out?

By the constitution of the "general account" system, each riding member is supposed to be a councillor for the general good of the whole county and not a riding member-councillor. However at election time the ratepayers definitely don't vote you in on such beautiful ideals! A member is voted in to do all he can for his riding and no half measures are expected of him.

So it is easy to imagine just what happens when nine councillors sit around a table with only half enough monies for the total requirements and only half the ridings you can do sealing in. Every councillor just becomes parochial, which is supposed to be right against the rules.

As far as the Waiau riding goes I would rather not have the general account system, but this cannot be altered. I am convinced that we could vastly improve on our present system of allocating each year the sealing for each riding.

In the first place my own opinion is that in a small county such as Wallace, we have too many ridings. The small ridings came about because of the horse and gig transport of those early days. Today, with modern transport, small ridings are no longer justified. With fewer ridings it would be ever so much easier to allocate our priorities. We all set our own priorities, which system I firmly support.

But in addition to this we now have two capable engineers who work for the Wallace County as a whole and who cannot afford to be biased towards any riding. These engineers should be given each councillor's priorities for them to go over each road and properly evaluate them. First on the density of population and traffic, also weight of traffic, on that road. Secondly on the distance to the nearest sealed road. Such things as high capital value of property in a riding also have to be considered but not necessarily claim priority.

A further improvement I feel would be in the easing of administration of a county by cutting out riding boundaries altogether and zoning the county into several zones for an even distribution of councillors.

At election time have the whole county vote for each candidate. This way I feel we could eliminate the parochial tendency we are prone to now.

After quite a lot of serious debating on our road priorities and without having any concrete figures in support, we resolved that the following ridings will get their share of sealing for 1970: Orepuki, Pourakino, Waimatuku, Wairaki and the Wairio ridings.

The following ridings will have their share of sealing for 1971: Waiau, Aparima, Otautau and the Mararoa Ridings. Also included in the estimates are new bridges over Cameron Creek on the Papatara Crust Road and a new bridge over the Lilburn on the Lilburn-Monawai Road.

Regarding the Lilburn Road,



Waiau Riding Notes

Supplied by

STEVE KOKAY

(Riding Member)

I have had a lot of criticism on the 12ft sealing and the narrowness of the formation. Perhaps my ratepayers can get some comfort in the fact that I am the most unhappy one of all of them on this matter, but there is nothing we can do about it as we have resolved that in future all our county roads in Wallace County will be 12ft sealing, as we just haven't got the money and cannot afford to do 18ft sealing.

We are gradually getting to a stage where we may do less and less sealing of county roads, and also some of our Class II roads have got to be raised up to Class I. This will take a lot of money.

Better Water For Hospital

A filtration and chlorination plant is to be installed at the eight-bed Tuatapere maternity home as soon as possible.

This follows a report by the Health Department after tests on the hospital's water supply, which is drawn from the nearby Waiau River.

The tests showed the water is contaminated. However, the Southland Hospital Board secretary, Mr R. E. J. Venus, said the hospital's drinking water all came from tanks.

The board's engineer is at present preparing an estimate of costs, which will be forwarded to the Health Department in Wellington for approval.

Mr Venus said it was hoped the work could be carried out as soon as possible.

Other water supply aspects have been postponed by the board until the full impact of the lowering of the Waiau river is known.

The Tuatapere school runs a similar system to that proposed for the hospital.

WE'VE GOT EVERYTHING
IN OUR HOME TOWN!



Yes, we've got everything in our home town! Well, perhaps not the candlestick maker—but certainly the butcher, the baker and everybody else who can sell you what you need

So this week, don't go travelling all that way into the big city. You can buy all the things you want right on your doorstep—right in your own home town.

NEW ZEALAND COUNTRY
NEWSPAPERS' ASSOCIATION

Tapestry On Display At Waiau CWI

Mrs B. Bartlett presided and welcomed members and guest speaker Mrs McLees to the October meeting. Mrs C. Diack agreed to act as delegate to the half-yearly council meeting. Members gave 20c each towards the "adopted" patients Christmas present.

Following the business Mrs McLees showed members some of her beautiful tapestry, also other needlework and sketching. Mrs McLees was thanked by Mrs L. Keast and presented with a small gift.

The wandering florin was won by Mrs L. Keast.

Competition results: Covered coat-hanger—Mrs F. Thomson and Mrs H. Whyte 1 equal. Decorative holder for year's supply Home & Country—Mrs F. Thomson 1. Cluster—Mrs F. Thomson and Mrs S. Kokay 1. Mrs W. Keating 2. Mrs W. Mellon 3. Single bloom—Mrs C. Diack and Mrs H. Whyte 1 equal. Mrs E. Peek and Mrs W. Keating 2 equal. Mrs F. Thomson 3.

ANGLING COMPETITION RESULTS

During the 1968/69 fishing season the Waiau Angling Club was revived.

Mr J. A. Kenneally was elected president and the secretary is Mr D. Buchanan.

As the inaugural meeting was late in the season, only three competition days: Morton Bartlett. The results of these competitions and winners of the trophies were as follows:

Erskine Shield (heaviest fish of the season): A. Howell (5lb 7oz). Ackers Cup (aggregate weight of fish over competition days): P. Thomson (14lb 1oz). Langmuir Cup (for junior anglers, aggregate weight over competition days): Morton Bartlett (3lb 14oz).

The 1969/70 season was away to a good start and the senior competition held on November 1 resulted: P. Thomson (9lb 5oz, 5 fish) 1; N. Carroll (8lb 10oz, 3 fish) 2; M. Gutsell (4lb 11oz, 3 fish) 3.

Your membership ticket enters you for a draw in a \$10 trophy at the end of the season. Join now!

'Gazette' CLASSIFIEDS

FOR SALE

1970 DIARIES

Farmer's Day to Page Diary \$1.45.

Diary, Week to an Opening 64c.

Pocket Diary 70c

TUATAPERE STATIONERY

FOR SALE.

CHILD'S SMALL BICYCLE,
16in WHEEL,
ALSO
PIPE SWING.
BOTH IN GOOD CONDITION.
PHONE 170-K TUATAPERE.

WANTED TO BUY

PFAFF MODEL E30 and 230
SEWING MACHINES
FOR PARTS.

We pay \$52 for Model 130.
Write to 8 Symonds Street,
Onehunga, Auckland or phone
663-477.

We pay freight.

Printed by South Otago Newspapers Ltd. and published by Tuatapere Stationery.

Orawia WDF

Mrs Guise demonstrated many ways of making hats to members at the October meeting of the branch. Competition results: Large bloom, Mrs Young 1, Mrs Richards 2, Mrs Dyer and Mrs Morton equal 3; small bloom, Mrs Morton 1, Mrs Bryan 2, Mrs Richards 3; shrub, Mrs Richards 1, Mrs Hagen 2, Mrs Young and Mrs Dyer equal 3; sewing, Mrs Richards 1, Mrs Young 2, Mrs Hagen 3; baking, Mrs Hagen 1, Mrs Young 2, Mrs Richards 3; vegetable, Mrs Bryan 1, Mrs Sutherland 2, Mrs Young 3.

Sign Posts.—Request for permission to attach a "Post Office" sign to a departmental telegraph pole at the intersection of King Street and Main Street (opposite the Waiau Butchery) was approved during the pleasure of council.

FOR
SERVICE
AND
SATISFACTION —

NEIL'S
FARM SERVICE

PHONE 315 OREPUKI.

MANUFACTURING
ENGINEERS.

We undertake all types of REPAIR and
MAINTENANCE WORK, on the spot, or
in our well equipped workshops.

ALL WORK CARRIED OUT BY
EXPERIENCED TRADESMEN.

For that next job you may be considering
... be it Buildings to Hydraulic Gear ...

KINDLY CONSULT US.

— BY SERVICE WE GROW —