

WESTERN Wanderer

Tuatapere | Clifden | Orawia | Blackmount | Monowai | Colac Bay | Orepuki

Cover Photo: Papatotara Rd Sunset Sent in by Carol Erskine

Issue 247

At a glance ... what events are on this month?

AUGUST 2022

MONDAY	TUESDAY	WEDNESDAY	THURSDAY	FRIDAY	SATURDAY	SUNDAY
<p>1 Order your Daffodil Bunches by 5 August</p> 	2	3	<p>4 BookClub 10:30am Tui Base Camp</p>  <p>Cancer Society Quiz Night Orepuki Hotel 7:30pm</p>	<p>5 Meet Laura Koot S The Well, 6pm P Time to Ponder O WTCC, 7pm, T Matt Chisholm & Laura Koot</p>	<p>6 Tuatapere Community Market The Shed at the Well 10-1pm</p>	7
<p>8 Meridian Energy's Power Up Fund Community Drop In Session 2:30 - 5:30pm at The Well</p>	<p>9 Ohai Indoor Bowls Club AGM 1.30pm Ohai Community Hall</p>	10	11	<p>12 Trustee Nominations for Tuatapere Health Trust due in</p> <p>Community Strength & Balance Class Orepuki Community Hall, 10-11am</p>	<p>13 Weekend Flax Workshop for Beginners 10-2pm, Scout Den Hall, Erskine Street</p>	<p>14 Weaving Class for Kids 3-4:30pm, Scout Den Hall</p>
15	16	17	<p>18 Soup & Chat 11:30-1pm Tui Base Camp</p>	19	<p>20 Second Hand PopUp Shop MARKET DAY 10-2pm TPC Main Rd Community Potluck Dinner, WTCC, 6pm Deadline for WW Sept Issue content</p>	21
<p>22 Waiau Area School Teacher Only Day</p>	23	24	<p>25</p>  <p>Cancer Society Daffodil Day & Street Stall outside Tuatapere 4 Square</p>	26	27	28
<p>29 Tuatapere Community Medical Services & Waiau Health Trust AGM - 7pm Day Activities Room, Maternity Hospital</p>	30	31	1	2	3	4
<p>Coming up ...</p>	<p>Hauroko Valley Primary School Teacher Only Day 2 September</p>	<p>Tuatapere RSA & Tuatapere RSA Memorial Bursary Trust AGM 7:30pm Tuatapere Fire Brigade Hall 7 September</p>	<p>Waiau Community Theatre Group Production 9-10 September Waiau School Hall 7:30pm</p>			

Special thanks to



SEE INSIDE FOR MORE DETAILS!
Want your event here? Let us know at
yourwesternwanderer@gmail.com

COMMUNITY NOTICES & EVENTS

HANDY PHONE NUMBERS

EMERGENCY

POLICE / FIRE / AMBULANCE: **111**

MEDICAL CENTRE: (03) 2266 123

TUATAPERE POLICE STATION:
(03) 2269 020

TUATAPERE COMMUNITY WORKER:
027 757 5983

HAUROKO VALLEY SCHOOL OFFICE:
(03) 2266 753

WAI AU AREA SCHOOL OFFICE:
(03) 2266 285

TUATAPERE CEMETERY TRUST:
(03) 2266 065

CHAMBERS SERVICE STATION:
(03) 2266 654

TUATAPERE SERVICE STATION:
(03) 2266 475

TUATAPERE FOUR SQUARE:
(03) 2266 898

TUATAPERE OUTDOORS & HARDWARE:
(03) 2266 363

Want to know more about the Hump Ridge Great Walk?

For information or to book/walk the Tuatapere Hump Ridge Track – please contact the Track Operations Office directly via www.humpridgetrack.co.nz

Project Webpage: Stay informed with the facts and news via

www.doc.govt.nz/hump-ridge-great-walk-project

Project Email: Get in touch to ask questions or to be added to the newsletter distribution list via email: HumpRidgeGWP@doc.govt.nz

Media Enquiries: please direct to media@doc.govt.nz

Rubbish Challenge!

Join us every **Friday** afternoon
at **4pm** for the
1 hour Rubbish Challenge
**Keeping Tuatapere
Rubbish FREE**

2

Meet Laura Koot



5th August
2022

A chance for the teenage girls of
our community to meet Laura
Koot

At The Well, Orawia Rd,
Tuatapere 6pm

Although you wouldn't pick it looking at her today, Laura has had to overcome her fair share of personal battles to build the life she now enjoys, she believes two simple things helped her become a person she is proud of and she will share these lessons.

Please register for catering purposes with
your name & contact details to
tuataperespot@gmail.com

A launch for SPOT Tuatapere.

TIME TO PONDER



Eat, Guest Speakers, Good company.

5TH
AUGUST

WAI AU TOWN AND
COUNTRY CLUB, KING
ST, TUATAPERE



MATT CHISHOLM
LAURA KOOT



ROLLING SUPPER PROVIDED
THROUGHOUT THE EVENING

7PM

WITH THE HELP OF WAI AU
HEALTH TRUST AND
TUATAPERE HUMPRIDGE TRACK
TRUST

EVERYONE WELCOME, PICK UP YOUR NEIGHBOURS,
FRIENDS & FAMILY

WAIAU COMMUNITY THEATRE IS BACK IN ACTION!

Yes we are back! We are looking forward to staging some humorous drama pieces starring local identities; among these are some of our loyal troopers and also some new faces! We will also be presenting a bracket of popular songs. If you are keen to sing solo or as part of the group we welcome you to be a part of this year's production!

If you would like to register interest or make enquiries please contact: **Anne Horrell - 021 2169 808** or **Helen McLean - 027 2206 005**.

We are a happy, welcoming bunch and we love to have fun!

The production dates planned are **Friday 9th September** and **Saturday 10th September** - to be held at the **Waiau Area School Hall** and starting at **7.30pm**.

Apart from the entertainment we also provide some refreshment and a hearty, tasty supper. We will send out flyers closer to the dates advising of ticket booking arrangements. In the meantime keep the dates free and be prepared to have a fun-filled evening, compliments of Waiau Community Theatre.

WEEKEND FLAX WORKSHOP FOR BEGINNERS

Saturday 13th & Sunday 14th August, 10am-2pm

We will offer fresh, homemade cake, coffee and tea
Cost of two days of Flax Crafts: **\$45**

Weaving Class for Children

Sunday 14th August, 3pm - 4:30pm

\$10 per Family

Where: Scout Den Hall, Erskine St, Tuatapere

Register by ph/text: **Karina 027 3012 102**

or email: **karinagerzabek@gmail.com**

LOOKING FOR AN EXPERIENCED LAMBING SHEPHERD

to assist with a medium intensity lambing season.
Would be responsible for own mob of ewes.



Start early September till early October.

Farm Located Papatotara, Tuatapere

To apply or for more information please contact

Minessa 027 3112 112

COMMUNITY NOTICES & EVENTS

PLEASE HAVE YOUR ARTICLES, NOTICES, OR
UPDATED ADVERTS FOR THE
WESTERN WANDERER SENT IN BY

20th of AUGUST
(for the September Issue)

OREPUKI COMMUNITY PROMOTIONS
GROUP PRESENTS



COMMUNITY STRENGTH & BALANCE CLASS

A FALLS PREVENTION CLASS
FOR THOSE LOOKING TO
IMPROVE THEIR BALANCE AND
MOBILITY, INCLUDING LOW
IMPACT STRENGTH AND
BALANCE EXERCISES.

WHERE: OREPURI COMMUNITY HALL

WHEN: 10am - 11am
EVERY SECOND FRIDAY OF THE MONTH

COST: GOLD COIN

ENJOY A CHAT & A HOT CUPPA AFTER CLASS

CONTACT/LEADER: KATHRYN MENPES
EMAIL: OREPURI.PROMOTIONS@GMAIL.COM
PHONE: 021 0811 6603

**LIVE STRONGER
FOR LONGER**

PREVENT FALLS & FRACTURES



SOUTHLIFE
**Community
CHURCH**

Steve & Sharon
are Pastors

and we are an area church



We believe in
Community and
endeavour to
show this the
best we can by
the way we
care and serve!



We warmly
invite you to
come along to
one of our
services.
It would be great
to see you

Sunday Service
10am Truro St, Orepuki



WE ARE LOOKING FOR A CUSTOMER SERVICE SUPERSTAR ADMIN OFFICER

Responsibilities will include:

- Meet and greet walkers at the Humpridge Track office
- Process their check-in against scheduled bookings
- Brief walkers on Day 1/2/3
- Schedule shuttle transport for those booked
- Liaise with Drivers on shuttle schedules and passengers
- Process payments as required – retail, etc
- Process bookings and invoicing
- Liaise with other staff on daily activities
- Other tasks as allocated

You will need to have:

- Competent computer skills – Microsoft Office
- Knowledge of Xero (training provided)
- A very friendly disposition – need your 'A game' every day
- Attention to detail skills
- Proactive work ethic
- A valid driver's licence

You will need to be:

- Relatively fit – you will need to walk the track
- Well-groomed and non-smoker
- Sociable but of sober habits
- Punctual with possible overtime required and occasional weekend

Apply now by email to

Cedric Wedderburn

operations@humpridgetrack.co.nz

with your CV and cover letter

TRACTOR DRIVER REQUIRED

for upcoming season.

Variety of work.

Experience preferred.

Please phone **Alex 021 277 5308**



COMMUNITY NOTICEBOARD

TUATAPERE COMMUNITY MEDICAL SERVICES TRUST & WAIAU HEALTH TRUST LTD AGM

Annual General Meetings will be held on
Monday 29th August 2022 at 7:00pm for
Tuatapere Community Medical Services Trust followed by
Waiau Health Trust, at the Day Activities Room, Maternity
Hospital, 69a Orawia Rd Tuatapere.

Trustee nominations are invited for the Tuatapere
Community Medical Services Trust. We are also seeking
expressions of interest for Directors of the Waiau Health
Trust. For both - **apply in writing by 12th August 2022** to
PO Box 10, Tuatapere 9642 or email to
kristy@tuataperemedical.co.nz

OHAI INDOOR BOWLS CLUB AGM

Tuesday 9th August at 1.30pm. Ohai Community Hall.

All Welcome. Thank you.

David Squire, President

TUATAPERE RSA & TUATAPERE RSA MEMORIAL BURSARY TRUST AGM

Tuatapere RSA and Tuatapere RSA Memorial Bursary Trust
have their AGM on **Wednesday 7th of September** at
7:30pm at the Tuatapere Fire Brigade Hall.

All enquiries to **John Munro** on **03 226 6341**

OREPUKI YOGA CLASSES

Held at the Orepuki Community Hall.

Wed 5:30-6:30pm Vinyasa Yoga

Wed 6:45-7:45pm Gentle/Beginners Yoga

Fri 5:45-6:45am Yin/Vinyasa Yoga

For info and registration contact:

Ini at inigunnyyoga@gmail.com

TUATAPERE COMMUNITY MARKET

First Saturday of the month. **10am - 1pm**

In the Shed at The Well.

4 Please text 027 297 4767 to book a \$5 table



COMMUNITY POTLUCK DINNER

Are you new to the area of Waiau Valley?
Or are you wanting to meet others?
Or are you wanting to welcome others?

On - 20th August 2022

At - Waiau Town and Country Club

From - 6pm to 8pm (approximately)

We are having a gathering to
welcome everyone!

For newcomers, those living alone,
anyone wanting an evening out
to come and socialise.

Bring a plate, whatever you can bring.
Buy a drink there, meet and greet others!

Welcome to our district those Newcomers,
Farmers, Workers, Mums and Dads,
Let's give a welcome to those who have
come to our beautiful valley and village.

**Wherever you are from, whatever you do
come along for that time of being
a community.**

If you want more information
Please feel free to phone
Lynley on 027 2974 767

*We look forward to
seeing you on
20 August 2022*

AUGUST IS DAFFODIL MONTH

Isobel Green, Tuatapere Branch, Cancer Society

I will be going around, as usual, taking orders
for fresh flowers - \$20 for 20.

Orders have to be in by **5th August**. You can
purchase online if it suits, or give me a ring on
(03) 226 6065

We are have one more fundraising quiz night
to run:

4 August - Orepuki Hotel, Orepuki
7:30pm start. \$5 per person.

**Any donations for the Raffle table will
be greatly appreciated.**

Our Street Stall will be held on
Friday 26 August, 10am - 4pm
outside Tuatapere Four Square.
Baking, Raffles & Goods.

Any donations would be much appreciated.

Please support this greatly needed society.
All money raised is kept in Southland.



 **Cancer Society**
Daffodil Day
Friday 26 August 2022

Pre-order Fresh Flowers

For \$20 including free urban delivery, you can
brighten your workplace with a bunch of 20 daffodils
and support the Cancer Society of Otago & Southland

Credit/debit card or invoice (bank transfer) available

Order online by **Friday 5th August** at
daffodilday.org.nz

Delivery will be made week of 22nd August in time for Daffodil Day



Questions? Please contact:
info@cansoc.org.nz

 **Cancer Society** | **ANZ**
Major Sponsor

TUATAPERE AMBULANCE

Did YOU Know?

The Tuatapere Ambulance is a funded service by the Tuatapere Lions Club, for the residents of Tuatapere & Districts.

Should you receive an account for this service from St John, please forward it immediately to:

The Treasurer

Tuatapere Lions Club

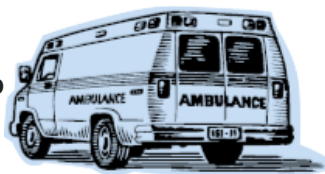
PO Box 47

Tuatapere

Sometimes we experience difficulty in receiving the invoices for YOUR trip - so PLEASE do forward them on to us.

Thank you!

**Tuatapere Lions Club Charitable Trust
Ambulance Committee**



COMMUNITY NOTICES & EVENTS

CALLING ALL LOCAL COMMUNITY GROUPS / SPORTING TEAMS/CODES ETC

It's free to advertise your local group, sporting team/code in the Western Wanderer! If you want to share the results of a game and/or tournament or celebrate the achievements of a team member or player - we can print that too! Email yourwesternwanderer@gmail.com by the 20th of the month prior & we'll also add any event notices to the Community Noticeboard for the next issue!

TUATAPERE PRESBYTERIAN CHURCH

Has it been a trying week? Is life a bit of a struggle?
Have things not quite gone your way?
Need somewhere to reflect and rest your mind?
Need to 'take a breath'?

How about joining with us for a time of quiet fellowship on **Sundays at 10.30 am** at the **Tuatapere Presbyterian Church, Main Street, Tuatapere**

A time to be, to reflect and refresh. There is a children's time where they can be in their own space too. All are welcome to join us.
Make new friendships, create new moments.

Need to know more? Phone or message
Lynley on 027 297 4767

ADDRESS NUMBER PLAQUES

Address number plaques can now be ordered through the Tuatapere Community Worker Support Trust. These can be clearly seen anywhere day or night. The number plaques are for properties. Each number must be specific and correct for this purpose.

To order please call **Keri Potter 027 757 5983**



SOUP & CHAT! (FREE)

Thursday **18 August** at Tui Base Camp.

11:30am to 1:00pm

Please book your place at the table, making sure there is enough soup to go around. Hope to see you there! Phone Keri Potter **027 757 5983**



WESTERN SOUTHLAND HEALTH SHUTTLE

The Western Southland Health Shuttle Service travels from Otautau, Ohai, Nightcaps, Tuatapere, Riverton - covering all of Western Southland. We also connect with the Invercargill-Dunedin shuttle.

The Western Southland Health Shuttle operates Monday - Friday (excluding Public Holidays).

Bookings are required by 3pm the day prior to transport.

Ph: 0800 103 046 to book.

Please book as soon as you receive your appointment.

TUATAPERE VOLUNTEER FIRE BRIGADE

We're on the lookout for members to join this rewarding organization. We are looking for persons who are, ideally, available throughout the day.

If you think that you would like to try this (sometimes lifelong) commitment, then please feel free to come and try it!

We train on Tuesday nights at 7:30pm during daylight saving and 7pm through the winter months.

We look forward to meeting with you.



COMMUNITY NOTICEBOARD

WANTED BY THE POP UP SHOP

Linen - Children's Toys - Household Items
- Jigsaws - Children's Shoes -

Can you help with any of the above for our customers?

Many, many thanks for your support of the shop.

Contact Carol Diack 021 110 1835

POP UP SHOP

Quality second hand goods

OPEN

Friday 2pm to 4pm

Saturday 10am to 2pm

Tuatapere Presbyterian Church Hall, Main Road, Tuatapere. Stay a while and enjoy a cup of tea or coffee and something to eat. **Everyone welcome.**

A new larger selection of quality children's clothing is now in stock as well as new household items.

Be quick for a bargain.

Check out my weekly Facebook post.

**Donations of items always gratefully received.
Thank you for helping us help the community.
Drop off at the church or for other options
contact me. Carol Diack 021 110 1835**

MARKET DAY

Stalls of craft and other goods

Every 3rd Saturday of the month.

Next market day 20th August.

From 10am to 2pm

Stalls are in the foyer of the Tuatapere Presbyterian Church, Main Road, Tuatapere. **Everyone welcome.**

Check out my Facebook post of that week.

*Greeting cards/wheat bags/knitting/preserves/
plants/essential oil products/woodwork and more.*

To book a table or any queries please phone or text
Carol Diack 021 110 1835

**Get your car washed, dried and windows cleaned
Price arranged on request!**

Contact: Rex Hibbs Flat 1/26 Orawia Rd, Tuatapere

NEED A JP?



The following Justices
are available
by appointment:

Tuatapere

Keri Potter 027 526 3137

Te Waewae Bay

Shirley Whyte 027 504 5220

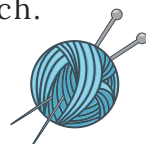
Blackmount

Nicky Baker 0276435880

WESTERN SOUTHLAND WOOLCRAFT GROUP



Spinning, Felt, Weaving, Knitting,
Crochet. Other crafts welcome!
1st & 3rd Wednesday of the month.
10am - 3pm. \$3. BYO Lunch.
Scout Den, Erskine Street.
For details please contact:
Helen Todd 022 103 9327



TUATAPERE & DISTRICTS LIONS CLUB PROJECT



SUPER DIRT

Super dirt bags are now
weighed so more in each bag!
\$8 per bag - ready for your garden!

Super dirt can be collected from:
Cracks Yard, Grove Burn Road,
in the mornings Monday to Friday.
Weekends by arrangement.

Delivery by arrangement - (but not
guaranteed)

Phone Trevor (03) 225 5864 or
Stephen (03) 226 6817



TUATAPERE COMMUNITY WORKER

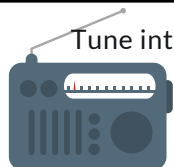
Room 5 Medical Centre
69A Orawia Road

Monday - Thursday 10am to 3pm

Keri Potter 027 757 5983

Email: tcworker@xtra.co.nz





Tune into Tuatapere's very own Radio Station

88.2 FM - Tui FM!

Hits of the 80's & 90's and
today's current music!

SALVATION ARMY FAMILY STORE TRUCK

The Salvation Army Family Store Truck will come out and collect large amounts of your pre-loved furniture & other household items. This service is free. Please call the store to organise your visit on **03 214 5380**



COUNTRY CORNER CRAFTS

Come in and browse and see what we have to offer. Hats, scarves, children's knitwear, cards, jewellery, woodware, sewing, jams, pickles, sauces, etc.

Tuatapere souvenirs "On Natures Edge" logo are always available.

Is anyone interested in joining to sell their crafts? You are more than welcome to contact us.

Want to volunteer your time & work in the Craft Centre - let us know! It's a great way to meet people! If you wish to view the shop and it is closed, please ring the ladies below to open it for you.

Louise Greber (03) 668 6001 or

Lyla Sherriff (03) 226 6187

TUATAPERE ENVELOPES

Envelopes printed with the "Tuatapere on Natures Edge" Logo can be purchased at Country Corner Craft Shop 1A Orawia Road. **Cost \$3.00 per 10**



SOUTHLAND COMMUNITY LAW CENTRE

Free legal information and advice for the community of Southland. 2nd Floor, Cue Building, 33 Don Street, Invercargill. Phone **(03) 214 3180**

Freephone: 0800 550 800
(outside Invercargill city only)



COMMUNITY NOTICEBOARD

CHESS!

Who is keen for a game or to learn?



Inside venue for winter!

Sundays 3-5pm at Waiau Town & Country Club

Gold coin donation appreciated to help pay for the sets. See you Sundays, just turn up, no need to register or anything!

WAIAU SQUASH 2022

Squash is a great way to keep fit over the winter, and socialise with some like-minded people!

Family/social keys are also available.

We are always looking for new members so please contact

Rebecca or Sam if you are interested.

Contact: Sam Egerton **027 250 5477**

Rebecca Robertson **027 424 6129**



INDOOR BOWLS

The Indoor Bowls season is underway and the Waiau Indoor Bowling club is desperately needing players to avoid closing down.

We have practice nights on Mondays 7.30pm with competition games Thursdays 7.30pm at the Waiau Town & Country Club.

Young players are welcome to join with training/coaching provided.

If you'd like to join or know any who is keen ... please email jessejculbertson@icloud.com

SENIOR CITIZENS

Senior Citizens is a group of over 60s that meet every Friday afternoon at 1pm at the rooms behind the RSA Hall.

We are always looking for new members so if you would like a fun afternoon playing bowls, cards or just catching up with friends, come and join the group. Contact: Olive Bennett Ph **(03) 2266 477**

COMMUNITY NOTICEBOARD

TUATAPERE PLAYGROUP

Tuatapere Playgroup welcomes all 0-5 year olds & their parents/caregivers to come join the fun!



Friday mornings from 9am to 12pm. Bring a packed morning tea and drink bottle.

We provide a warm, friendly atmosphere for children to form bonds and learn alongside each other and a place for parents to connect.

For more info message our Facebook page or contact Gemma on 022 040 3368

You'll find us at 23B Orawia Road, Tuatapere

CLIFDEN PLAYGROUP

45 Otahu Eastern Bush Road. Join our FB Group to check if it's on: **Wednesday (during School Term) 9:30am - 12:30pm.** All mothers and children welcome.

Bring packed lunchbox for your child's morning tea.

Contact: Sarah 027 699 5234

TUATAPERE TOY LIBRARY

Tuatapere Toy Library has been a toy swap/hire service provided to the young families of Tuatapere and surrounding districts since 1989.



The purpose is to create opportunities for the little people of our community to have accessibility to toys. A small contribution of an annual membership allows families to join the group and have access to the toys. For more information or questions please text or ring **Nathalie Pahl on 027 4759 075**

WE WANT CONTENT CONTRIBUTORS!

Are you interested in being a regular or semi-regular contributor of content for the Western Wanderer?

We're looking for people who would like to provide a short article/piece of reading for each monthly issue. (It doesn't have to be every month - we can be flexible!)

Get in touch with us at

yourwesternwanderer@gmail.com

TUATAPERE HEALTH & GIFT SHOP -part of Riverton Pharmacy

69a Orawia Road
(beside the Medical Centre)
Ph: (03) 226 6999

12:00pm - 5:30pm Mon-Fri

Good selection of Vitamins, Giftware & Over-the-counter healthcare

First prescription drop-off from 1:30pm

Second prescription drop-off 4:30pm

WAIAU MEMORIAL LIBRARY

Library Hours: Fridays

10:00am - 11:30am

2:30pm - 4:00pm

7:00pm - 8:00pm



★ Firewood For Sale ★



The Waiau Star Golden Oldies are fundraising for a trip to Cambridge in 2023 to play Leamington in memory of the late Bill Wayne Cook.



- Mixed Firewood - Macrocarpa, Old Man's Pine + Bluegum.
- \$70 per metre - 10 metre minimum order
- Ready for pick up at the start of July

Contact Stump on 021 525 227

ESSENTIAL OILS 100% PURE GIFTS OF NATURE
Florals Trees Plants Herbs Spices Citrus

To Learn More, phone or text your local Wellness Advocate
Carol Erskine Papatotara 0274 599 654



Tuatapere Freight

LOCALLY OWNED & OPERATED

RUNS MONDAY TO FRIDAY
WEEKENDS BY ARRANGEMENT

Phone Brandon
027 436 4360



Shearing magazine

Des Williams (editor)

Tel 07 839 2891 : Mob 0274 833 465

Email : shearingmag@xtra.co.nz

Member NZ Guild of Agricultural Journalists and Communicators (Inc)

LAST SIDE PUBLISHING LTD

PO Box 102, Hamilton 3240, New Zealand

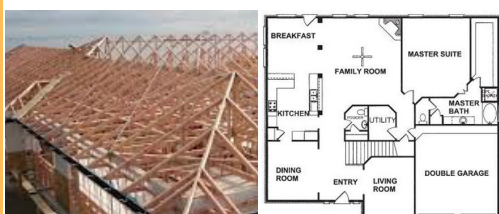
PAUL ANDERSON BUILDER

AVAILABLE FOR ALL YOUR
BUILDING REQUIREMENTS.

NO JOB TOO SMALL.

COMPETITIVE RATES.

REFERENCES AVAILABLE!



Mobile: 027 890 3602

thetakis@outlook.com

IN & AROUND THE COMMUNITY

Can You Help?

Lloyd Esler, Author, Historian

My current book is 'West to the Waiau' - the story of the lower Waiau Valley, basically below the Mararoa weir and including the whole of Te Waewae Bay. It should be finished by the end of the year.

It covers the natural history and settlement and development of the valley - not so much the story of Tuatapere which has been told elsewhere. I have had a good response to my request for information and photos but I'm still looking for photos or postcards of the following:

Happy Valley School, stranded whales, trains, boats on Lake Hauroko, Monowai Power project, floods, the wrecked dredge at the rivermouth, shipwrecks, goldmining, toheroas on Bluecliffs Beach, the old Clifden homestead, the Limestone Gorge, Ohai coalmining, lime kiln at Clifden, beech forestry operations, Orawia cement works, pig, deer and chamois hunting in the catchment and the river before the power project.

I'm also in need information on the opening of the road through the top of the valley to Manapouri and the 1961 book '50 years of Education in the High Country.'

Any help much appreciated.

Please ph (03) 213 0404 or email me at esler@southnet.co.nz



A Bird's Rubbish Story

Karina Gerzabek

in a beautiful little village, right at the beach

This place has been a paradise for the birds because they had their natural habitat and at the same time vast amounts of food, which they literally swung in front of the beak. The people of the village also lived in abundance and many tourists who walked through the streets gave all the leftover food to the birds.

People enjoyed feeding the birds, because they came incredibly close. But one day something happened that no one expected. The day had been like every other day, the sun was shining, the sea was rushing and the sky was bright blue. It was simply idyllic.

Again, on this day tourists came by. The birds knew as soon as people were in sight the food would not be far. A family with children passed by. One of the children was chewing gum and did not want it anymore. The child spat the gum out of his mouth. Now the chewing gum was on the hot asphalt.

Like a rocket, one of the seagulls flew along and grabbed the chewing gum. But the chewing gum was so sticky that it stuck to her beak. The little seagull was in a panic to free itself. Everything only got worse. The little seagull didn't know what to do and started screaming loudly. More and more people came, but no one would approach the bird because nobody wanted to have anything to do with such a foolish seagull. Unfortunately, no one knew what really happened to the seagull so no one came to help.

PLEASE ... let this story have a happy end. Think carefully how you spend time outside of your house and what you do with the things you no longer want.

Based on a true story.

TODD & CO
REALTY

Melanie - your local salesperson

I am proud to be serving my local area, helping people from all walks of life meet their property goals.

After some great sales so far in 2022, I have a number of buyers still looking.

If you would consider selling, give me a call!

Mel Muldrew

021 068 5262

melanie.m@toddc.co.nz

TODDCO.NZ

William Todd & Co Ltd, Licensed (REAA 2008)



Choose Local. Choose Melanie.
Serving Southland since 1865.

MOUNTAINS EDGE CABINS MONOWAI



Hunting, Fishing, Mountain Biking,
Kayaking & Tramping
Cabin Accommodation

12 Cabins
Double and Single Available
\$35.00 per person per night

Eftpos available

Full Kitchen Facilities, Showers, Toilets, Playground
& the Tennis Courts right across the road!

We are 'pet friendly'

www.mountainedgecabins.com

Email: mountainedgecabins@gmail.com

75 Turbine Drive, Monowai. Ph. 03 225 8267

WESTERN ELECTRICAL

2008 LTD

Electrical Solutions

Domestic | Industrial | Commercial

Quality Service at Competitive Prices

- New Builds, Rewiring & Alterations
- Dairy Shed, Farm & Industrial Maintenance
- Hotwater Element Replacement
- A/H Call Out Service Provided



Ph 03 225 8974 / 027 439 3787

Fax 03 225 8973

WAIAU HEALTH TRUST – August 2022

Medical Centre

Flu Vaccines 2022

We are still offering flu vaccines, should you wish to book please phone to make an appointment. Funding options are available for many people, please contact the Medical Centre to check if this applies to you.

We continue to offer Covid 19 vaccinations, please ring to make an appointment. We are also still doing supervised RATs and PCRs, should you require any information regarding these please contact one of the Practice Nurses.

Liquid Nitrogen Clinics are held on the last Wednesday afternoon of the month - please phone and make an appointment.

AFTER HOURS CARE

Tuatapere Medical continues to offer an After-Hours Service. If you are unwell and require medical care or advice outside of our normal business hours, simply call 03 226 6123 and you will automatically be connected to our After-Hours Triage Service. The qualified person will discuss your concerns and advise you of the process to be followed. If deemed you need care, they will contact our Practitioner who will then contact you directly.

Homebased Maternity Care:

If you are pregnant or a new mum, these services would be of great benefit. This care is available for you, we assist with anything for yourself or your new baby. Please contact me to discuss and ask any questions in regards to the assistance we can give you as a mum of a newborn baby.

Should you have any questions or concerns, I look forward to hearing from you.

Kind regards

Jo Sanford (Manager)
Cell: 027 235 6190



Waiau Health Trust
69a Orawia Road, Tuatapere
Approved Registered ACC Provider
Monday to Friday
9:00am – 4:30pm
Ph.: 2266123

Practitioner Hours
Amanda McCracken (NP) – every
weekday

Sheryl Eden (NP –every Monday &
Tuesday)

Physiotherapist
Tuesdays & Thursdays
Phone for an appointment

Podiatrist
Visits regularly –
Phone for an appointment

Warts/Minor Skin Lesions
Liquid Nitrogen treatment available
Phone for an appointment

Homebased Maternity Care
We are offering this service
in the patient's home.
Please contact Jo Sanford
on 2266123 for enquiries.

Day Activities Programme for
the Elderly
Every Tuesday & Wednesday
Please phone for further information.

District Nursing
Available as required by referral

Shirley Whyte
Your local realstate specialist living & working in Western Southland
now also an Accredited Justice of the Peace.



for:
Friendly service, reliability, sound local knowledge
in Western Southland, Te Anau & Stewart Island
All enquires welcome - all calls answered



Harcourts  M 027 504 52200 O 03 214 4080
E shirley@harcourtsinv.co.nz W www.harcourts.co.nz

Holmwood Real Estate Ltd Licensed Agent REAA 2008

Kia ora, Ni hao, Kamusta
Western Wanderer Readers



Hauroko
VALLEY PRIMARY SCHOOL

Hauroko Happenings

Term 2 was a busy time for our learners concluding with an End of Term Matariki Celebration. It was fabulous to have our school community join in our sharing of learning across curriculum through whanaungatanga, karakia, and kai.

Rural Lifestyle Residential
For all your Shearing Services.



**No mob too big
No mob too small
We do it all!**

**Contact Ricky Skipper to book in now
027 351 2620**

Specialising in
Dairy Conversions
Rural Fencing
Post & Rail



H Gill Fencing,
Eastern Bush
Phone 021 225 5489
After Hours 03 225 5488
Email hamish@hgillfencing.co.nz

 FCANZ
Fencing Contractors Association NZ

Congratulations to our AgriKids Team who attended NZ's Grand Final in Whangarei. "The Blazing Pitchforks" aka Ewan, Oliver, and Harry proudly represented Otago/Southland along with locals Tia and Renee. These young men shone brightly being complimented on their knowledge, skill, and teamwork throughout. The support received from individual people, organisations and businesses was immensely appreciated by our crew - thank you!

accelerate
PHYSIOTHERAPY

office@acceleratephysio.co.nz
60 Deveron Street, Invercargill
(off street parking)
0800 291 475

Accelerate is a gentle form of exercise, effective in providing long term solutions after an injury, especially low back pain.







We have interests in:

- > Spinal/Back & neck injuries
- > Sporting Injuries
- > Running, Cycling & Multisport
- > Men & Women's Pelvic Health
- > Acupuncture
- > Balance & Dizziness
- > Workplace Injuries / Ergonomic Onsite
- > Work Evaluations & Educations
- > Pilates

Joel Barnes
BHPT, BEXSL

Andrea Robertson
BHPT, PG Cert ACUP

Andrea Murray
Dip PT, Dip M.T.

Find us on  facebook

www.acceleratephysio.co.nz



Hauroko Valley is part of history in the making! We have a few students featuring in the Southland Charity Hospital Music Video! Two years ago a small group initiated changes to the "Southern Dream" lyrics and now it has been revamped by Jason Kerrison for Blair Vinings Legacy. Look out for our cameo at Invercargill's Water Tower in the Music Video when released as part of Red, Black, and White Day on Friday 29th July!



Hauroko
VALLEY PRIMARY SCHOOL

Hauroko Happenings



Term 3 is here already! We look forward to providing opportunities for our tamariki to engage in Literacy rich time, where our students present poems as part of our Year 1-3 Poetry Recitals. Alongside this our Year 4-8 learners have prepared speeches for presentation. We can't wait to see a range of informative, persuasive, and/or entertaining ideas being shared with our families and friends.

Our Year 3-8 hockey teams are continuing in weekly Invercargill Hockey Competitions. This term our Year 5-8 students have opportunities to play in the Western and Southland Netball Tournaments.

Thanks to the dedicated Coaches and Managers volunteering their time to ensure our students are upskilled in these sports.

HVP's annual ski trip is the first week in August. We have a group of eager skiers and snowboarders hitting the Remarkables, Queenstown. Until next time.

Nga mihi,
Julia - Principal/Tumuaki



We look forward to sharing more of our learning adventures with our Western Wanderer whanau soon!

ALWAYS OUR BEST



Registered **ELECTRICIAN**

For all electrical work
No job to small
A/Hours service available

Jay Brownlee
8 Carlyle Street, Tuatapere 9620
A/H 03 226 6673
Mob 027 4965 863
sparkieintuatapere@gmail.com

For all your Accounting and Tax Solutions

Ask for Janice or Trevor England

03 2266110

Aparima Accounting Ltd
57 Main Road Tuatapere

CANTERBURY CARS **4WD** Specialists

For all your vehicle requirements

Cars, utes, 4WDs, vans

Finance available

Contact: Murray Dowling
027 556 2655

Visit our website
www.canterburycars4x4.co.nz

Lynley McKerrow

Celebrant
Funeral and Marriage

P: 0272 974 767
E: nanamac60@xtra.co.nz

with care - with love - with dignity



Life as an Elected Member

The decision to throw your proverbial hat in the ring and stand as a candidate in this year's local government elections takes courage.

Southland District Council councillor Karyn Owen shares her top tips as a first-term elected representative during the past triennium, offering valuable insight for potential candidates.

Here are Cr Owen's top tips:

- Understand what councils there are and what they do in your area. Check out websites, Facebook, attend meetings or watch livestreams, talk to former or existing councillors. Are you really passionate about the environment? A better fit might be the regional council rather than district where you'll be talking about bridges and roads more than trees and water. Care more about parks and playgrounds? Maybe your local community board is for you.
- Reading, researching and listening to people on topics that sometimes don't float your boat is an important part of the role. Councils cover a wide range of topics (including how they all relate to finances and rates) and not all will interest you, but you still need to be engaged and willing to learn.
- It all takes time. Have a look at how many meetings there are and realise it's more than just formal meetings. I spend around 15-20 hours a week on Council business. Can you manage your other commitments? What does your employer think? How about your family and friends?
- Do you care about people? A large part of the role is thinking about other people's views of what Council does. If your 'not giving a stuff' factor is high, you may not have the empathy needed to be a good representative.
- Conflicts? If you work for an organisation which receives any council funding, you may need to communicate with the auditor general to check your conflicts are not beyond the thresholds that make you ineligible to stand.
- Are you prepared to be a recognisable public figure? You need to be comfortable with your actions being scrutinised in public.
- How connected are you to your community? If you live in the wops and aren't prepared to spend time within your community, you'd better at least be regularly within good cell coverage and answer your emails.

TUATAPERE HANDYMAN SERVICES

Barry Bennett
(03) 226 6730

- **Painting - Interior/Exterior**
- **Waterblasting**
- **Spider & Fly Spraying**
- **General Repair Work**
- **Lawnmowing**
- **Weed Spraying**



RAW FARM HOMEKILL

Wayne Saunders
Qualified Butcher

027 457 6350

rawfarming@yahoo.co.nz

82 Clifden Highway
Tuatapere



Cut up the way you want
Beef
Pork
Sheep
Venison
Other game meats
Traditional Smallgoods

Remember to ring & book in your beef! It's getting busy!

- Are you good at following rules? There are a lot, and many for good reason, such as enabling meetings to function well. Knowing the rules, and knowing when it's worth breaking them, is an aspect to local politics you will learn.
- Can you hold your personal opinion until you've heard public submissions on a topic? If not, you might be told you have a predetermined position and not be allowed to vote on a matter you care about. Equally important, can you keep a truly open mind and sometimes make hard and unpopular decisions, at times inconsistent with your values, but for the right reasons?
- Are you prepared to feel vulnerable by asking questions? If you don't have an enquiring mind and are just a sit-back-and-listen type, willing to go through a process and tick a box, you might not be what your community needs around the decision-making table.
- Are you humble enough to accept when your view is not the majority, and continue on working with staff and councillors even though you've disagreed on a topic that you might feel really passionate about?
- Can you hear criticism and not take it personally? Can you hear criticism, listen for the opportunity to change, and communicate it in a constructive way to others?
- Do you feel safe knowing some members of the public can be very critical of Council and may choose to make it personal? Bullying and threats can happen because matters that Council influences can become highly emotive.
- Can you deal with being frustrated when things in local government take a long time? Councillors do governance, chief executives do operations. If you think becoming a councillor means you are at the top and can change things quickly, you are certain to face frustration.
- Are you organised and able to meet deadlines? Everything in local government business has deadlines. You'll be really ineffective if you don't give feedback at the right times. This also means picking when the right is time to push a topic and could mean having to wait until a relevant policy is up for review.

Are you still reading this list? If you are, you could be an ideal candidate. To help make an informed decision and learn more about the roles available, there's plenty more information on our website for both candidates and voters:

<https://www.southlanddc.govt.nz/my-council/elections>

Or visit the **Vote Murihiku Facebook page**.

INDEPENDENT MIDWIFE

ISOBEL DEVERY

*Caring for women throughout
Pregnancy, Birth till six weeks
Post Natal.*

*Choices for place of birth,
Home or Winton Birthing Units
or Kew Hospital.*

*Free pregnancy tests
available on request.*

**Phone: (03) 22668822
027 2267020**

©Peecears, EthicGraphics®

Sewing and Mending Services Available

Experienced machinist offering fast, reliable service with very reasonable rates.
I will mend/make anything from zip replacements to curtain making - just ask!
Free quotes and pick-up delivery service within Tuatapere.



Contact **Deborah**
(03) 226 6783 or 021 0305 667





DAGWOOD DAGGING

*Available now to all new and existing
customers for all your crutching
requirements.*

*3 Stand or Single trailer available
7 days a week, wet or dry.*



No job too big or too small.
Competitive rates

Jeff Chambers
027 3042 241




* 13 Tonne Digger * 5.5 Tonne Digger * 2.7 Tonne Digger- dry hire or operated
 * Tip Truck * Bob Cat * Augers * Post Driver * Tree Saw & Hedge Trimmer


* Tree Trimming * Post Driving * Fencing * Cleaning of Wintering Sheds * Site Clearance * Cartage * Gravelling * Lane Maintenance * General Earthworks

For all enquiries and bookings please contact Lance or Alice Harris
 Lance: 027 304 3714
 Alice: 027 270 0363
 Email: lanceharris533@gmail.com
 Check us out on facebook- Harry's Machines

CHAINSAW SHARPENING
 All chainsaw chain sizes precisely sharpened and rakers taken down accordingly, guaranteed results
Chain only \$10 Taken Off & Refitted \$13
 Please phone **027 308 2501**

WANTED TO BUY
 Possum Fur, Hard deer,
 Antler, Deer Velvet.
 Phone Leith 027 496 3721

WAIAU VALLEY SHEARING LTD



Simon de Vries
Julie Heaps
027 840 9867
03 226 6212



From Aunty's Cookbook

Curried Sausages

Perfect for those cold winter nights

Ingredients

- Beef sausages- 500g
- Onion, thinly sliced- 1
- Carrots, peeled and sliced - 2
- Butter- 1 Tbsp
- Mild curry powder- 1 Tbsp
- Plain flour - 2 Tbsp
- Beef stock - 500ml
- Fruit Chutney - 2 Tbsp
- Frozen peas - 1 cup



Instructions

- Brown sausages on each side in a large frying pan, remove from the pan and set aside.
- Add onion and carrot to the pan. Cook, stirring for a few minutes. Add butter and stir until it melts.
- Sprinkle in curry powder and stir for 30 seconds, then add flour and mix for another 30 seconds.
- Slowly pour in beef stock and stir in chutney.
- Slice sausages into 1cm thick slices and add back to the pan.
- Stir everything together and let it simmer for 5-10 minutes until the sausages are cooked through and the sauce thickens.
- Stir in peas and cook for 2 minutes.
- Serve with creamy mashed potatoes or steamed rice.

Meridian Energy's Power Up Fund Community Drop In Session

Community Groups and Not for Profit organisations

Come along and find out about the Meridian Power Up fund, available to community led projects and initiatives across Te Anau and Manapouri.

The Meridian Manapouri Community Fund provides grants for projects in Te Anau, Manapouri, Clifden and Tuatapere that support sustainable community development.

- **Monday 8th August**
2.30pm – 5.30pm
Tuatapere: The Well
- **Tuesday 9th August**
12.00pm – 2.00pm
Te Anau: Te Anau Library Meeting Room

Our community engagement manager Mel Schauer will be there to answer questions about the fund and provide advice on how to apply.

Pop along for a cup of tea and a chat about the Power Up Fund.

Contact community@meridianenergy.co.nz
For more information go to
www.meridianenergy.co.nz/community-support/fund/manapouri



MR STEEL

TUATAPERE

PH: 027 276 6816

MALCOLM

For all your engineering,
steel fabrication and repair needs!

FORDE WINDERS SHEARING LTD

Available for all new and existing clients

For all your shearing and
crutching requirements

Please phone

Darin Forde 027 229 7760

Jeremy Winders 027 231 4299



**BEN MCMASTER
BUILDING**

Ph: 027 202 7955

benmcmaster@live.com

- Licensed Building Practitioner
- Sheds, renovations & new homes
- Based in Western Southland

You dream it, we'll build it



Ice cream & Milkshake Parlour

16 Orawia Road

6am - 4pm

Every Day

Milkshakes Ice Creams
Waffles Crepes
... and more ...

Gluten-Free / Vegan Options

*Home-made food to warm the heart
and fill the stomach with some of the
best coffee you've ever had here in
Tuatapere, Western Southland*

Waiau Town & Country Club

**Meals (homemade goodness)
available Thurs, Fri, Sat & Sun
from 5pm to 9pm*.**

(*Bistro may close from 7:30pm onwards if not required)
Family Friendly | Happy to cater for dietary requirements.
Please pre-book for groups of 8 or more.

Club Opening Hours:

Mon - Thurs 4pm till close.

Fri 3pm – close.

Sat Noon – close.

Sun 3pm – close.

Book now for functions/birthdays etc

We can cater! Call to discuss options.

03 22 66 489

What's on at the Club:

***SPOT EVENT: Time To Ponder**

Friday 5 August, 7pm with Guest Speakers
Matt Chisholm & Laura Koot

***COMMUNITY POTLUCK DINNER**

Saturday 20 August, 6pm - 8pm

Bring a plate - whatever you can bring

***STEAK NIGHT** – every Thursday night
only \$25 for a delicious steak meal.

***INDOOR CHESS** – Previously at Last Light Lodge
Moving inside for Winter - **Sundays 3-5pm**

*** MEMBERS DRAW & RAFFLES**

drawn every Friday night! Approx. 7.30-8.30pm.
Come in for a bite to eat and a drink, who knows
you might be the lucky one to win \$\$!

**Keep an eye on our Facebook Page for
more details on upcoming events**

Annual Membership/Subscriptions

*Everyone welcome to become a member,
just pop in or call the club for a membership form.*

*Annual membership 2021/22 is
\$50 p/p or \$30 for pensioners.*

Phone: **03 22 66 489** | Address: 41 King St Tuatapere
Email: waiautcc@gmail.com | Facebook: facebook.com/waiautcc
| Courtesy Van Available |

We look forward to seeing you!



WAIAU AREA SCHOOL

Year 1-13 Education

Live to LEARN, LEARN to Live

Kia ora Western Wanderer Readers!

From Waiau to Waitangi

Leaving Tuatapere on the 11th July
Miss Quinn and five of our talented sports
people headed for Whangarei for the annual
National Area Schools Tournament to
participate in a variety of sports.

Students & their Sports:

Malakai Mangion - Football & Volleyball

Jack Richards - Rugby & Football

Alyssa Harding - B Netball & Volleyball

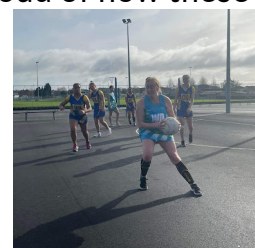
Meadow Rodgers - A Netball, Ki o Rahi &
Football

Oli Abbott - Football & Volleyball

We joined our other
Southern Area School
(South of the South)
participants who we built
our new teams with and
prepared for four days of
solid competition. On day
one we were greeted by a
hearty haka powhiri that
was a warm welcome to the North on a rainy
day. Each day the students played each of
their sports but against the different
provincial areas. Day one of the competition
was played against Central North Island, day
two was Top of the North and on the third day
we played the Top of the South.



During competition all of the Waiau students
were awarded with a Player of the Day for
their efforts and contributions to their teams.
As a community we can be proud of how these
students represented
themselves, our school and
our community.



On the third day of
competition the coaches
from Top of the South and
South of the South meet to
select a combined team to
challenge the 'North Team'.
Waiau were lucky to have
two students selected in
the South Island teams;



Jack for Rugby and Malakai for Football. This competition takes place on the fourth day. It is always an honour to participate in these teams and to be recognised as one of the best players at the tournament. To finish off the tournament New Zealand Area Schools Teams are named for each of the sports played during the tournament. These teams are selected by independent selectors who have a neutral stance.



We are proud to announce that **Meadow** was named in the NZ Area Schools Netball team (currently this team is a 'paper' team due to Covid restrictions).

At the conclusion of the tournament we left our South team and headed further North to Waitangi. With the recent introduction of the Aotearoa NZ Histories Curriculum it was decided to take these students for an eye-opening life experience to explore some of NZ's oldest history. We would like to thank the WAS BoT for their support and encouragement of this experience. The team

spent two days exploring the Bay of Islands and spent almost a full day on the Waitangi Treaty Grounds where we had a powhiri welcome onto Te Rau Aroha Marae and were introduced to a cultural experience. This experience is always important to our learners and allows them to understand what they learn better and with a deeper understanding.



Our final day was spent in Auckland at Rainbow's End with time to unwind and enjoy each others company before heading home.

We wish to say a huge 'Thank You' to our community for their support while fundraising for this event!

Alex Reid CONTRACTING

**Paddock Cultivation from
Ploughing to Sowing
Dry Hire available
Aerating
Direct Drilling
Ridging
Mulching**



Dairy Lane Maintenance

Tip Trailers • Vibrating Roller • 2 Tip Trucks

Sheep Conveyor

Drenching, Vaccination etc • 3 way draft

Large Skid Steer for calf shed cleaning, loading Muck Spreaders etc

4 Muck Spreaders • 16,000 litre Slurry Tanker
Pond Stirrer • Umbilical Slurry System



Rural Contractors
NEW ZEALAND

**PHONE ALEX
0212775308 CELL
03 2255377 HOME**



Rabco Ag Ltd – 021 362 766 – admin@rabco.nz
Agricultural Contracting Specialists - Western Southland



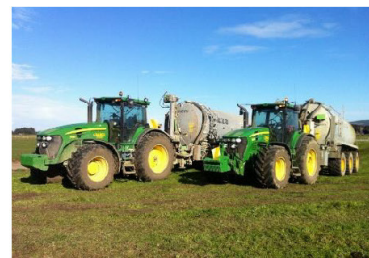
**Full silage
& baling
service**



Cultivation – including Direct Drill & Precision Drill



Effluent – Excavators - Hedgetrimming





C: 0274 247 102

T: 03 225 8652

E: admin@drakeplumbing.co.nz

KIERAN DRAKE

Certifying Plumber
& Drainlayer



Liquid Foliar Spray Contracting

- ✓ Fertiliser
- ✓ Fish Fertiliser
- ✓ Gibb & NBoost
- ✓ Herbicide
- ✓ Humates
- ✓ Soil & Herbage Testing

Jon – 021 575 071

WaterForce

Irrigation Systems
Pumping & Filtration
Effluent Dispersal
Water Management

20 Winton Hedgehope Highway, Winton

03 236 9805 www.waterforce.co.nz

0800 4 FORCE (4 36723)

*Your Local Graphic Designer
& Printing Specialist*

McMAHON
design studio

9 Cumnock Street, Wallacetown

P: 03 235 8967 M: 027 242 8109



E: mcmahondesign@outlook.com



FATHER'S DAY **SUNDAY**
4TH SEPTEMBER

Dad:

A SON'S FIRST HERO,
A DAUGHTER'S FIRST LOVE

Framed Wall Prints

- A3, A4, A5 or custom size available

Calendars

- Wall, Desktop & Magnetic options

Gift Cards & Tags

- Customised with your photos/theme

Cake Toppers

Printed Ribbon & Gift Wrap

Keyrings - Acrylic or Metal

Photo Books

- Various binding and paper options available

Canvas Prints

Coasters

Glassware & Mugs

Tees & Hoodies

Magnets

Vinyl Decals & Signs

*Spoil him this
Father's Day*
We have some great gift
ideas for you to
choose from.

All of our artwork
is customised designed
to your chosen theme & all
materials used in your order
are carefully chosen to suit
your project, so you can be assured
that you will get the perfect gift
for your loved one.

We offer a wide range of printing and graphic design solutions.

LOGO/EMBLEM DESIGN including full branding packages

ADVERTISING & SIGNAGE DESIGN

SOCIAL MEDIA GRAPHICS & EMAIL SIGNATURES

PHOTO EDITING & CUSTOM ART

CERTIFICATES - PRIZE CARDS - PROGRAMMES

WEDDING & EVENT STATIONERY

CALENDARS - BOOKLETS - REPORTS
NEWSLETTERS - MAGAZINES - CATALOGUES

ALL OFFICE STATIONERY

PERSONALISED STATIONERY & CARDS

PRESENTATION & PROMOTIONAL ITEMS

AND MUCH MORE...

Get in touch with us today for your free consultation and quote!



CHECK OUT OUR COOOOOL DEALS

<p>Tui Vodka Soda (ex bourbon) 7% 250ml 12pk can range</p> <p>\$21.99 EACH</p>	<p>KGB (incl Guanana) 7% 250ml 12pk cans</p> <p>\$22.99 EACH</p>	<p>Jim Beam & Cola; CC (incl zero) CC Soda & Lime 4.5% 10pk cans</p> <p>\$23.99 EACH</p>	<p>Jack Daniel's & Cola Double Jack 250ml 10pk cans</p> <p>\$23.99 EACH</p>	<p>Smirnoff Ice Red (incl Zero) 5% 250ml 12pk cans</p> <p>\$23.99 EACH</p>	<p>Cruiser 5% 12pk bottle range</p> <p>\$24.99 EACH</p>	<p>Clean Collective 5% 250ml 12pk cans Rinse 6% 330ml 10pk cans</p> <p>\$25.99 EACH</p>
<p>Odd Company 12pk bottle range</p> <p>\$2 EACH</p>	<p>Long White 10pk bottle range</p> <p>\$28.99 EACH</p>	<p>Coruba (incl Zero) 7% 12pk cans</p> <p>\$28.99 EACH</p>	<p>Jim Beam Canadian Club (incl Zero) 18pk 330ml cans</p> <p>\$38.99 EACH</p>	<p>Jack Daniel's & Cola 12pk bottles</p> <p>\$28.99 EACH</p>	<p>Stoneleigh Mariborough; Lighter ranges</p> <p>\$13.99 EACH</p>	<p>Penfolds Koonunga Hill (Cab Sauv, Shiraz)</p> <p>\$14.99 EACH</p>
<p>19 Crimes (ex Cali Red) range</p> <p>\$16.99 EACH</p>	<p>Allan Scott Black Label Cecilia ranges (Brut, Rose) Matawhero range (ex PN)</p> <p>\$20.99 EACH</p>	<p>Canterbury Cream 700ml</p> <p>\$13.99 EACH</p>	<p>Stolen Dark Rum Teachers 1Ltr Stolen White & Gold Rum (ex smoked) 700ml</p> <p>\$41.99 EACH</p>	<p>Absolut; Ballantines Beefeater 1L</p> <p>\$46.99 EACH</p>	<p>JB Devils Cut; JB Black 1L</p> <p>\$49.99 EACH</p>	<p>Wild Turkey 1L</p> <p>\$54.99 EACH</p>
<p>Tanqueray 1L & Flavoured 700ml range (ex Royale)</p> <p>\$55.99 EACH</p>	<p>Jameson 1L Jameson Black Barrel 700ml</p> <p>\$55.99 EACH</p>	<p>Malty 700ml range</p> <p>\$58.99 EACH</p>	<p>JB Double Oak 1L Haku Vodka; Roku Gin Ratu Rum range 700mls</p> <p>\$59.99 EACH</p>	<p>Jack Daniel's Haymans Gin 1L Woodford Reserve Gentleman Jack 700mls</p> <p>\$59.99 EACH</p>	<p>Johnnie Walker Black 1L</p> <p>\$69.99 EACH</p>	<p>Jim Beam 1.75L</p> <p>\$77.99 EACH</p>
<p>Monteiths 6pk bottle & can ranges (ex cider)</p> <p>\$13.99 EACH</p>	<p>Kingfisher Strong 330ml 6pk cans</p> <p>\$14.99 EACH</p>	<p>Rekorderlig Ultra (berry; passionfruit) 6pk can range</p> <p>\$14.99 EACH</p>	<p>Kiwi Lager 330ml 15pk cans</p> <p>\$19.99 EACH</p>	<p>Fortune Favours 6pk range</p> <p>\$20.99 EACH</p>	<p>Kingfisher Sol 12pk bottles</p> <p>\$23.99 EACH</p>	<p>Peroni 12pk bottles</p> <p>\$26.99 EACH</p>
<p>Heineken Heineken 0; Light 12pk bottles</p> <p>\$26.99 EACH</p>	<p>Tui; Export Gold; Extra Low Carb; DB Draught 15pk bottles</p> <p>\$26.99 EACH</p>	<p>Export 33 15pk bottles</p> <p>\$28.99 EACH</p>	<p>Haagen 24pk bottles</p> <p>\$33.99 EACH</p>	<p>Speights Summit Ultra Low Carb 24pk bottles</p> <p>\$39.99 EACH</p>	<p>Asahi 24pk 330ml bottles</p> <p>\$42.99 EACH</p>	<p>Steinlager 24pk 330ml bottles</p> <p>\$42.99 EACH</p>



Promotion period between 1/8/2022 to 31/8/2022. While stocks last. Promotion only available at participating stores. Please contact your local store to confirm whether they are participating in the promotion and check the pricing in-store prior to purchase. Online pricing will vary.

100% NEW ZEALAND OWNED AND OPERATED
thirstyliquor.co.nz

FOLLOW US ON SOCIAL MEDIA



ASK ABOUT
LOYALTY CARD
BENEFITS &
GIFT VOUCHERS



Ratty Says ...

Waiau Memorial Library

I'm Baaaaaack!

Did you miss me? I may have been caught doing something I shouldn't and kind of got into trouble for it. I don't know why because I was only doing some research and trying to find out stuff. I was looking for a lifetime supply of cheese pizza. I was making my order when I got busted. I'm not sure which got me in the most trouble. Ordering the pizza or 'borrowing' the credit card. There was some yelling and I got banned from the computer for a **WHOLE MONTH!** I'm not allowed to use the Internet unless I'm supervised. Something to do with not being able to keep my sticky fingers off other people's stuff. Which is a shame because when I was researching stuff I discovered something called a Polaroid camera. It takes photos that come out of the camera straight away and you can watch them develop. How cool is that?

Because I was in a 'whole lot of trouble', I didn't get to tell you about my day with Karina learning how to make baskets out of grass. First, she taught us how to make string out of flax. I'd already learned how to do it so you'd think I'd be an expert at it. Nope, I had to be shown how to twist the flax heaps of times. Karina and her friend were very, very patient and helped me until I got it right. It took a while. Then Karina showed us how to make the grass baskets. All you have to do is get some long grass, plait it, wrap it up and then sew it all together using the flax string that we made earlier. Easy! Well, maybe there was a bit more to it than that. I had a look at the baskets Karina made and I thought about swapping one of her baskets for mine but I think she might have noticed the difference. It was fun and everyone at the workshop was really nice.

There was one problem though, I got grass all over me and it was really itchy. I didn't say a word. They would have made me have a bath and there was **NO WAY** that was going to happen!



Tui Base Camp



Open from 8:30am every day!

Kitchen open until at least 7.30pm

**COME IN &
CHECK OUT OUR SPECIALS**

**Lambing and Calving specials running for
August & September:**

- ★ 1L of Shirley's famous seafood chowder - \$30 (serves 2 - 3 people)
- ★ 10 frozen pies for \$50 (choice of chicken, venison, steak & onion, seafood, mince, mince & cheese and butter chicken).
- ★ 10% discount when purchasing 5kg+ of sausages

Pre-order your morning tea and lunches by calling **(03) 226 6250** and we can have it ready for you to pick up when it suits you.

★ **Saturday 27th August** ★

Kelsey Hayes is performing from 8pm

Don't forget we now have a mini-van!

Contact us to organise a night out at Tui Base Camp (pick-up and drop-off). Enquires to **James 027 837 3521**

For all of your dine in and takeaway requirements including:

In-house roasted Amore Coffee
In-house made pies, sausage rolls, cheese rolls
Range of breakfast options
Packed lunches
Catering

Phone: (03) 226 6250

www.tuibasecamp.co.nz



**Keep an eye on our
Facebook Page
for our latest updates!**



TUATAPERE OUTDOORS & HARDWARE

For all your

Gardening tools, lawn care, garden hoses, insect and disease sprays, potting and compost.

We have those building requirements for that weekend job with a good selection of silicone, nails, screws and bolts.

New fishing rods and reels, fishing lures, good selection of soft bait, fishing nets, flounder and eel nets.



Good selection of giftware.

Come in, check out what we have.

Contact:

Judy **027 225 8192**

Paul **027 890 3602**

Shop **(03) 226 6363**

YOUR BUSINESS CARD COULD BE HERE!

CONTACT

yourwesternwanderer@gmail.com

FOR PRICING/DETAILS



027 252 7933

- ☒ Renovations
- ☒ Extensions
- ☒ New Builds
- ☒ Sheds/Farm buildings
- ☒ Decks
- ☒ Pre-purchase house
- Inspections

Call us for any building requirements
Ph 027 252 7933 email: aaroncbtld@gmail.com

Your help is needed to set the direction for freshwater

Now's the time to share your views on what the future of freshwater could look like in your part of Southland.

These visions will express the community aspirations for freshwater, in order to help guide freshwater management.

Southlanders have already told us a lot about what they want. This includes cleaner waterways for swimming, fishing and practicing mahinga kai (food gathering). Our waterways support food production, commercial and industrial use.

In managing freshwater, we've already come a long way. Now's an important time to get involved.

Ultimately we want our waterways to achieve a state of hauora – healthy resilience, where they can take a knock and bounce back.

To learn more and to share your vision for your area,
go to www.es.govt.nz/know-your-wai



**Share your
views today**

www.es.govt.nz/know-your-wai | 0800 76 88 45

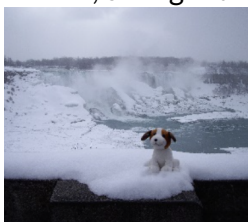
The Adventures of Charlton

I thought that when they talked about going to Peru in South America, we were going to a warm place, not far from the Equator, where it is almost always warm and comfy. Like where I grew up in Queensland. Well, when we got off the plane travelling for hours and hours from Brisbane, we actually landed in Toronto in Canada in North America - and it was 21 degrees below zero! - IT WAS SOOOO COLD - I cannot describe it! Just as well I was packed up warmly in the backpack, or I don't know what could have happened. It turned out that we had to fly to Toronto to catch a flight to Peru a few days later. So, to make the most of it, I got to climb the then highest known tower in the world, so high it does not even fit into a photo and see the Niagara Falls FROZEN. But then we got on another plane and flew south right past Cape Canaveral in Florida USA, where the Rockets fly to the moon from.

We landed in Lima, the capital city of Peru and from there we travelled to a few very interesting sights where the air is thin, and it was hard to breathe. We saw Lamas in the Pampa, and tall pink birds called Flamingos and smoking volcanoes and people dressed in colourful traditional clothes tending to their fields on terraces. I got to see the Inka Trail and Machu Pichu. Spot me in the picture? At the time I did not quite see what was so special about the place. But then, when you read up about it in the books in the library, you understand, that the people that lived there and build these ancient places must have been very special indeed. We visited Lake Titikaka, the highest navigable lake in the world. There we met some people that live on islands that they build themselves out of reed, yes, reed like tall gras. I could not believe it. They also build boats, and it is said that in times long gone bye, they may have even travelled the oceans in these reed boats.

We went to Colca Canyon and saw the largest flying birds in the world, the Condor and I must say I was glad to be hiding in my owners' jacket at the time. These birds are even bigger than the Albatross that we see sometimes fly near Steward Island. Up there in the Andes they grow Potatoes high above 4000m, much higher than the highest mountain in New Zealand, and I was told that the Potatoes we eat here in Southland also come originally all the way from there. And Maize and other grains were growing there when the Inka people lived, many centuries ago. There is sooo much to learn!

I am looking forward to sharing another adventure with you soon.



PROPERTIES WANTED!

Contemplating selling? You might be surprised by what your property could fetch on today's market

Contact Julie today for a free appraisal and to discuss how you could take advantage of this bouyant property market



Julie Guise

021 256 4164

julieguise@sre.co.nz

SOUTHLAND REAL ESTATE LTD
Licensed under The Real Estate Agents Act 2008 MREINZ

SOUTHLAND REAL ESTATE LTD
Licensed under The Real Estate Agents Act 2008 MREINZ

For all your fencing requirements

WESTERN FENCING
SHEEP | DAIRY | DEER



Call BEVAN 0277 413 213

ADS

ANDERSON DRAINAGE SERVICES

Keeping Southland Flowing



Fraser Anderson

021 162 0210

fraseranderson1@gmail.com

Forest Hill, Southland

Follow us on Facebook

Call us today!

- ✓ Tile Cleaning
- ✓ Culvert Cleaning
- ✓ Septic Tank Blockages
- ✓ Domestic Blockages
- ✓ Rural Drain Blockages

BARRETT *Ag* LTD

FULL SILAGE AND BALEAGE SERVICE



**ALL CULTIVATION
INCLUDING DIRECT DRILL
AND STRIP TILLING - PRECISION PLANTING**



**EXCAVATION
20 TONNE DIGGER/ GRADER
D85 BULLDOZER/ ROLLER
TIP TRUCKS AND TRAILERS**



**Barrett Ag Ltd
Ph: Kahu- 027 5183 448
E: barrettagltd@gmail.com
FB: Barrett Ag**





George Harpur, SDC Councillor, Waiau Aparima Ward

Hi and welcome to my August report for 2022.

Past mid-winter and the days are starting to stretch out, waiting for a little dry patch for all the gardeners to get out and set the scene for the next crop of veges.

The winter sporting codes are drawing to a close, with the senior rugby wrapped up for another year. A mixed result for the team but nevertheless they stuck it out and ended with several very close results not going their way. With a good mix of younger players and administrators their immediate future looks promising. Netball and Squash also competed well so a good effort to all.

Once again, I will draw you attention to the upcoming elections and thank all those who are looking to participate. I have been taking a great interest in the comments that are on the facebook pages regarding the race for all positions including the SDC mayoral position. The negativity around some people's thoughts is actually amazing considering that many have done little or nothing around any form of volunteering, community service or in general supporting the facilities of the towns of their residence. Now is the chance for these folks to step forward and prove to the current and past elected members that we know and can do better.

Nominations close 12/08/22.

Well, that's me for another month, so cheers for now.

**We're Updating Our Community Contacts
Handy Pull-Out Reference Guide for Local Services,
Community Groups, Sports Clubs, Teams etc.**

We try to include the guide twice a year, either in the July or August Issue and again in the February or March Issue - but since many committees are still to have their AGMs - we're holding off the guide until our September Issue!

If details for your sport, club and/or committee have changed, please let us know.

If we've missed your sport, club, group or committee - let us know!

Send an email with the details to:

thisistuatapere@gmail.com

Help others find your community group, service or sporting code!



Phone: Anita Green 027 506 2418
Tuesday 9-5pm, Thursday 10-8pm, Friday 10-5pm - Appointments are encouraged.

CHAMBERS REPAIR SERVICE

45 Half Mile Road, Tuatapere

Ph: (03) 226 6654

- 24 hour Self Service Fuel
- Full Mechanical Workshop
- NZ Post Centre
- Agents for Wide Span Garage



Bring your lawnmower in for a service now & beat the rush

**MTA Gift Vouchers
Available**

**PLATE
METER SERVICES**
TROUGH CLEANING SERVICES

PASTURE METER READING THAT'S QUICKER
AND EASIER, WITH AT THE GATE REPORTS

- Specialist in quality pasture meter reading with advanced sensor technology
- Provide 200 measurements per second or 18,500 readings over a single 500m pass
- Provides a fully integrated electronic support system
- Provides a secure web-based storage of information with easy access
- Prompt generated feed wedges for rapid decision making and seasonal comparisons
- Generate reports at the gate, supplying valuable pasture cover data and comparable results every time
- Improve heath & increase animal hydration
- Enhance production & improve water quality
- Reduce bacterial/algae contamination of trough water

**CLEAN TROUGH WATER MEANS
IMPROVED LIVESTOCK HEALTH**

Now 2 bikes
available
for pasture
metering



Brett George • P 027 351 3408

E platemeterservices@gmail.com



**For Landscaping,
Land Maintenance,
Gravel Supply & Cartage**

**GRADES OF CRUSED & SCREENED GRAVELS,
ALKATHENE LAYING, ROOTRAKING,
FARM TRACKS, DAIRY LANES**



**ELEVATOR SCRAPER,
BOBCAT & ATTACHMENTS,
LANDSCAPING, TRENCHING AUGERS**

Supplies of Gravel Ex Waiau River

River Run Screened Grades Concrete Gravel Pea Gravel
Rejects for soak holes Crushed - AP30 & AP65
Peebles for Sheep and Cattle yards and calf sheds
Fines suitable for cow lane capping

**K J SUTHERLAND
GRAVELLING &
AGRICULTURAL CONTRACTOR
2475 OHAI-CLIFTON H/WAY
ORAWIA RD2 OTAUTAU 9682**

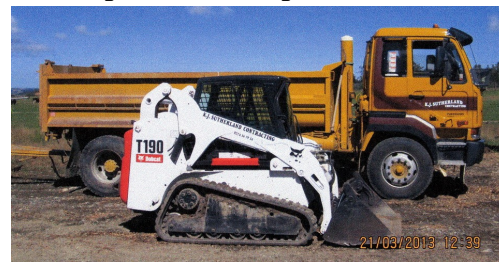
Ph 0274 367 934

**K.J. Sutherland
Contracting
Bobcat T190**

**With attachments: Landscape Rake,
Augers and Trencher**

**Suitable for all landscaping, shed and yard
maintenance**

Muck-spreader and tip trailer available



**PHONE KEVIN
027 367 934 / (03) 225 5716**

MILLARS

- PLUMBING
- GAS FITTING
- DRAINLAYING
- LICENSED BUILDER

Master Plumbers
Ph 027 4340 705 or 03 225 8567



We specialise in:

**Resource consents
Farm environmental plans
Policy advice
DOC concessions
Landscape plans & assessment**

We take care of the paperwork,
so you can do what you do best!

Sonya: 027 5050 077
Rebecca: 027 4246 129
www.slwp.co.nz
Locally owned & operated



Agricultural Contractors servicing Western Southland and beyond.

BALAGE - SILAGE - GROUNDWORK - FEED TRADING
Nigel 021 226 6156 / fowlecontracting@gmail.com



Tim and Superior go the extra mile

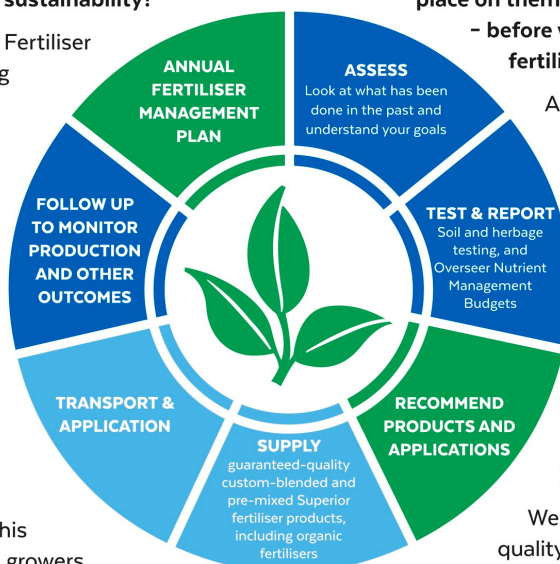
Are you frustrated with the lack of service from your local fertiliser consultant, peddling the same advice year after year regardless of your production outcomes, environment and sustainability?

Give **Tim Adcock** of Superior Fertiliser Specialists a call. He will bring a whole new meaning to service and client/advisor relationships.

Tim is a key member of the highly skilled Superior team totally committed to helping you develop healthier, more productive soils and plants.

We form a specialist fertiliser company that provides high quality advice and products at competitive prices. We have been doing this for South Island farmers and growers for just on 20 years.

Superior promotes a total soil care package. First, we get to understand the make-up, nutrient status and health of your soils, the demands you are going to place on them, and your production goals – before we apply one kilogram of fertiliser.



A comprehensive regime of vigorous soil tests will be undertaken and the results will provide the basis of a Superior Fertiliser Management Plan customised for your unique situation. This will complement your farm's Environmental Plan and provide the blueprint for an ongoing annual fertiliser programme.

We then supply guaranteed-quality solid fertiliser for your pasture and crops, monitor production and other outcomes, and update your Plans as required.

It's free to talk so don't hesitate to give Tim a call.
Phone 021 418 224



Tim Adcock
Fertiliser Advisor
Otago/Southland
021 418 224
tim@superior.net.nz

 FERTILISER SPECIALISTS
SUPERIOR
www.superior.net.nz

TUATAPERE SERVICE STATION

20 ORAWIA ROAD
PHONE: 03 2266475

HYDRAULIC FITTINGS & HOSES

WE STOCK A GOOD RANGE OF CRIMP ON HYDRAULIC FITTINGS FOR AGRICULTURE HOSES WE CAN ALSO REPAIR OR MAKE UP NEW HOSES

WHITEBAITERS

The season is almost here so start thinking about getting those nets out and checking them. We have plenty of mesh and ulstron netting if you need to recover them or come in and pre order your nets now



RIDGELINE CLOTHING

We have a small number of pink and blue little critters packs still available. These are no long available so out they go at \$70.00

Blue Camo – Sizes 8 & 12

Pink Camo – Sizes 8 & 10



NZ TRANSPORT AGENCY
WAKA KOTAHĪ

WE CAN PROCESS ALL YOUR

CHANGE OF OWNERSHIPS
VEHICLE EXEMPTIONS

CANCELATION OF REGISTRATION
CHANGE OF HUBOMETER

REGISTRATIONS
ROAD USER CHARGES

HOURS

Monday to Friday

8.00am – 5.00pm